



Situation Summary

Thursday, August 18, 2022 - Day 890 of the Pandemic

Update as of 1:30 PM

Extraordinary Assumptions: There are many different data sources in this report and not all of them match. This document is informational purposes only, the goal is to provide an overall picture of the current situation.

COVID-19 by the Numbers

| 8/18/2022 | Riverside | Imperial | Kern | Los Angeles* | Orange | San Bernardino | San Diego | San Luis Obispo | Santa Barbara | Ventura | California | United States | Global |
|---------------------------------|----------------|---------------|----------------|--------------|----------------|----------------|--------------|-----------------|---------------|--------------|-------------------|-------------------|--------------------|
| Total Cases | 677,437 | 63,972 | 268,463 | 3,190,808 | 650,827 | 646,584 | 901,794 | 61,604 | 102,430 | 202,609 | 10,141,523 | 93,006,719 | 590,659,276 |
| Total Cases Per Capita | 27,447 | 33,380 | 28,953 | 31,107 | 20,159 | 29,160 | 26,756 | 22,091 | 22,444 | 23,760 | 25,272 | 27,848 | 7,459 |
| % of Total Cases/Population | 27.45% | 33.38% | 28.95% | 31.11% | 20.16% | 29.16% | 26.76% | 22.09% | 22.44% | 23.76% | 25.27% | 27.85% | 7.46% |
| Recovered* | <u>671,017</u> | <u>57,038</u> | <u>264,745</u> | Not Reported | <u>622,358</u> | <u>632,341</u> | Not Reported | Not Reported | <u>94,091</u> | Not Reported | <u>10,113,325</u> | <u>90,252,317</u> | <u>572,414,168</u> |
| % of total recovered/population | 27.19% | 29.76% | 28.55% | Not Reported | 19.28% | 28.52% | Not Reported | Not Reported | 20.62% | Not Reported | 25.20% | 27.02% | 7.23% |
| Total Deaths | 6,562 | 950 | 454 | 32,701 | 7,266 | 7,999 | 5,442 | 514 | 712 | 1,546 | 46,682 | 1,033,332 | 6,440,163 |
| Deaths Per Capita | 265.87 | 495.70 | 48.96 | 318.80 | 225.06 | 360.74 | 161.46 | 184.32 | 156.01 | 181.30 | 116.33 | 309.40 | 81.33 |
| % of Total Deaths/Population | 0.27% | 0.50% | 0.05% | 0.32% | 0.23% | 0.36% | 0.16% | 0.18% | 0.16% | 0.18% | 0.12% | 0.31% | 0.08% |
| % of State's Cases | 6.68% | 0.63% | 2.65% | 31.46% | 6.42% | 6.38% | 8.89% | 0.61% | 1.01% | 2.00% | 10.90% | 15.75% | |
| Total Hospital Beds | 3,500 | 202 | 1,126 | 19,463 | 6,025 | 3,639 | 6,536 | 452 | 604 | 1,174 | 67,094 | | |
| Currently in Hospitals | 166 | 15 | 76 | 996 | 297 | 185 | 301 | 16 | 45 | 70 | 3,719 | | |
| Hospital Beds Available** | 3,334 | 187 | 1,050 | 18,467 | 5,728 | 3,454 | 6,235 | 436 | 559 | 1,104 | 63,375 | | |
| Total Hospital ICU Beds** | 139 | 14 | 38 | 869 | 181 | 170 | 296 | 22 | 25 | 40 | 2,660 | | |
| Currently in ICU | 24 | 0 | 19 | 144 | 42 | 22 | 36 | 1 | 4 | 5 | 450 | | |
| ICU Beds Available | 115 | 14 | 19 | 725 | 139 | 148 | 260 | 21 | 21 | 35 | 2,210 | | |
| Case Fatality Rate | 0.97% | 1.49% | 0.17% | 1.02% | 1.12% | 1.24% | 0.60% | 0.83% | 0.70% | 0.76% | 0.46% | 1.11% | 1.09% |
| Population*** | 2,468,145 | 191,649 | 927,251 | 10,257,557 | 3,228,519 | 2,217,398 | 3,370,418 | 278,862 | 456,373 | 852,747 | 40,129,160 | 333,976,981 | 7,918,710,000 |
| % of State Population | 6.15% | 0.48% | 2.31% | 25.56% | 8.05% | 5.53% | 8.40% | 0.69% | 1.14% | 2.13% | 12.02% | 4.22% | |

Sources: CDPH, WHO, CDC, Local County Data, LA Times, Worldometers

The date for which case statistics and hospital data were reported. Hospital COVID data are self-reported through a portal managed by the California Hospital Association and pulled at 2pm. COVID case statistics are reported by local health departments to CalREDIE and are pulled at 2pm. Hospital data and case statistics are integrated by the California Department of Technology and made available through the Open Data Portal the following morning. CA Open Data Portal is at least 24 Hours behind although a backlog of new case reports at the State level has ostensibly been cleared, some County dashboards still contain notes that indicate data are missing. (*Many County sites do not report recovery rates or are only updating once a week)(** based on calculation)(***California Demographics from State Database Blueprint Data Chart 12-15-20 & census.gov)

News

More detail on page 2

US Data

More detail on page 4

Monkey Pox

More detail on page 5

News – The collection of news articles are related to COVID-19. The inclusion or order of articles is not intended to reflect their importance, nor is it intended to endorse the political viewpoints or affiliations included in news coverage.

China's Now Testing Live Fish in Its Bid to Stop Covid Spreading

- Authorities in the coastal city of Xiamen, in southeastern Fujian province, are testing not only fishers for the virus on a daily basis but also their catch. The practice has stirred debate and invited ridicule on social media, and comes amid a worsening outbreak on the island of Hainan further to the south, which the government has said may have originated at a fishmonger's shop.
- Xiamen's district of Jimei announced the testing in late July because of fears that illegal trading with foreign fishers could import the virus. The regime involves testing both people and the things they've been in contact with, including fish plucked from the water. What caught the eye of netizens in particular were pictures of fish getting oral swabs, which some chose to interpret as a symbol of China's overzealous application of its Covid Zero policies.
- "Fishers must carry out one Covid test every day during operations," the official notice read. "When fishers and their catch land on shore, both 'humans & goods' should be tested."
<https://finance.yahoo.com/news/china-now-testing-live-fish-055149927.html>

US CDC announces reforms after poor COVID response

- The CDC's director, Dr Rochelle Walensky, told the agency's staff about the changes on Wednesday. It is a CDC initiative, and was not directed by the White House or other administration officials, she said.
- The planned changes at the [Centers for Disease Control and Prevention](#) — CDC leaders call it a "reset"— come amid criticism of the agency's response to COVID-19, monkeypox and other public health threats. The changes include internal staffing moves and steps to speed up data releases.
- "For 75 years, CDC and public health have been preparing for COVID-19, and in our big moment, our performance did not reliably meet expectations," Walensky told CDC staff.
- The Atlanta-based agency, with a \$12bn budget and more than 11,000 employees, is charged with protecting Americans from disease outbreaks and other public health threats.
<https://www.aljazeera.com/news/2022/8/17/us-public-health-agency-announces-reforms-after-covid-response>

Concerns over accuracy of COVID rapid test results when first sick

- Health officials stress that at-home tests are a vital and accurate way of tracking COVID-19 infections but an initial negative test doesn't mean people are out of the woods.
- The U.S. Food and Drug Administration suggested last week that those checking to determine whether they are infected should use multiple tests over a period of days.
- "When you perform an at-home COVID-19 antigen test and you get a positive result, the results are typically accurate," government officials wrote in a public statement. "However, if you perform an at-home COVID-19 antigen test, you could get a false negative result."
- <https://news.yahoo.com/california-officials-warn-misleading-covid-162123997.html>

COVID can impair brain function, large study suggests

- Researchers from Oxford University combed through more than a million patient files and discovered that, two years after infection, patients who had recovered from COVID-19 were at a higher risk of psychosis, dementia and "brain fog" when compared with patients who recovered from other respiratory diseases.
- For some symptoms, there was an initial uptick that leveled off. Anxiety and depression fell to rates in line with other respiratory diseases after two months.
- But, in the case of brain fog, for example, adults aged between 18 and 64 who had recovered from COVID-19 suffered from it at a rate 16 percent higher than patients with other respiratory diseases. The difference was more marked in those aged over 65, where increased risk was also found for psychosis and dementia.
- The paper adds to the growing body of evidence pointing to the long-lasting damage caused by the coronavirus. The issue has become a concern for governments, which are spending money to research and to treat the cluster of symptoms informally known as "long COVID," a label that includes both neurological problems as well as fatigue and shortness of breath.
- The Institute for Health Metrics and Evaluation estimates that 3.7 percent of COVID-19 patients develop a post-COVID symptom, said Janet Diaz, the WHO's lead on the topic. Speaking at a conference on Wednesday, she said that the average severity of post-COVID conditions are equivalent to those experienced by patients with severe neck pain, Crohn's disease or the long-term consequences of traumatic brain injury.

<https://www.politico.eu/article/covid-impair-brain-function-dementia-psychosis-anxiety-depression-large-study/>

STUDY: Neurological and psychiatric risk trajectories after SARS-CoV-2 infection: an analysis of 2-year retrospective cohort studies including 1 284 437 patients
[https://www.thelancet.com/journals/lanpsy/article/PIIS2215-0366\(22\)00260-7/fulltext](https://www.thelancet.com/journals/lanpsy/article/PIIS2215-0366(22)00260-7/fulltext)

50,000 LAUSD students reported absent on 1st day of school

- As many as 50,000 students, or 11% of the Los Angeles Unified School District population, were reported absent on the first day back at school Monday.
- Multiple factors may be to blame for low attendance rates at the nation's second-largest school district, officials said.
- Parents could still be worried about coronavirus as students started the school year with loosened guidelines, families could have moved away before the first day or perhaps they switched to private schools.
- Regardless of the reason, Supt. Alberto Carvalho is dedicating 600 staff members to re-engage chronically absent students.

https://ktla.com/news/local-news/50k-laUSD-students-reported-absent-on-1st-day-of-school/?fbclid=IwAR3diEw8Z11TrvxJ9afaDeZtsd-qGrIyyLL4InAcs9mXt_5Lba7QPSL6-uk

CDC streamlines COVID-19 guidance to help the public better protect themselves and understand their risk

- CDC is streamlining its COVID-19 guidance to help people better understand their risk, how to protect themselves and others, what actions to take if exposed to COVID-19, and what actions to take if they are sick or test positive for the virus. COVID-19 continues to circulate globally, however, with so many tools available to us for reducing COVID-19 severity, there is significantly less risk of severe illness, hospitalization and death compared to earlier in the pandemic.
- Recommending that instead of quarantining if you were exposed to COVID-19, you wear a high-quality mask for 10 days and get tested on day 5.

<https://www.cdc.gov/media/releases/2022/p0811-covid-guidance.html>
<https://www.cdc.gov/coronavirus/2019-ncov/your-health/isolation.html>



U. S. Data

https://covid.cdc.gov/covid-data-tracker/#cases_casesper100klast7days

United States At a Glance

Cases Total **93,006,719**
Case Trends

Deaths Total **1,033,332**
Death Trends

Current Hosp. **34,386**
Admission Trends

34.5% of People 5+ with
First Booster

[< Back to Cases, Deaths, & Testing](#)

United States COVID-19 Cases, Deaths, and Laboratory Testing (NAATs) by State, Territory, and Jurisdiction

Maps, charts, and data provided by CDC, updates Mon-Fri by 8 pm ET¹

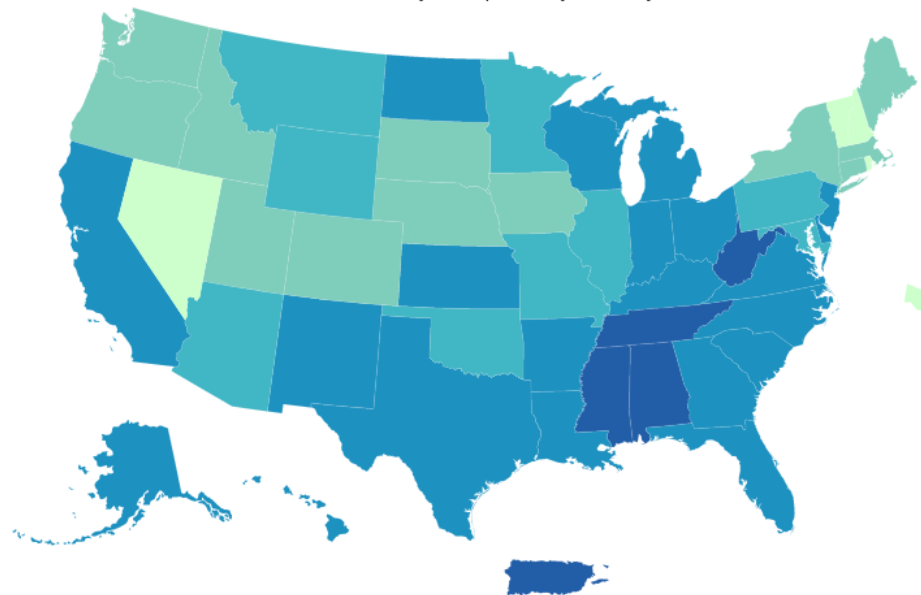
[View Footnotes and Download Data](#)



- View:**
- Cases
 - Deaths
 - Tests Performed
 - Percent Positive
- Time period:**
- Last 7 Days
 - Since Jan 21, 2020
- Metric:**
- Count
 - Rate per 100,000

This shows the number of COVID-19 cases for every 100,000 people over the last 7 days, allowing you to compare areas with different population sizes.

US COVID-19 7-Day Case Rate per 100,000, by State/Territory



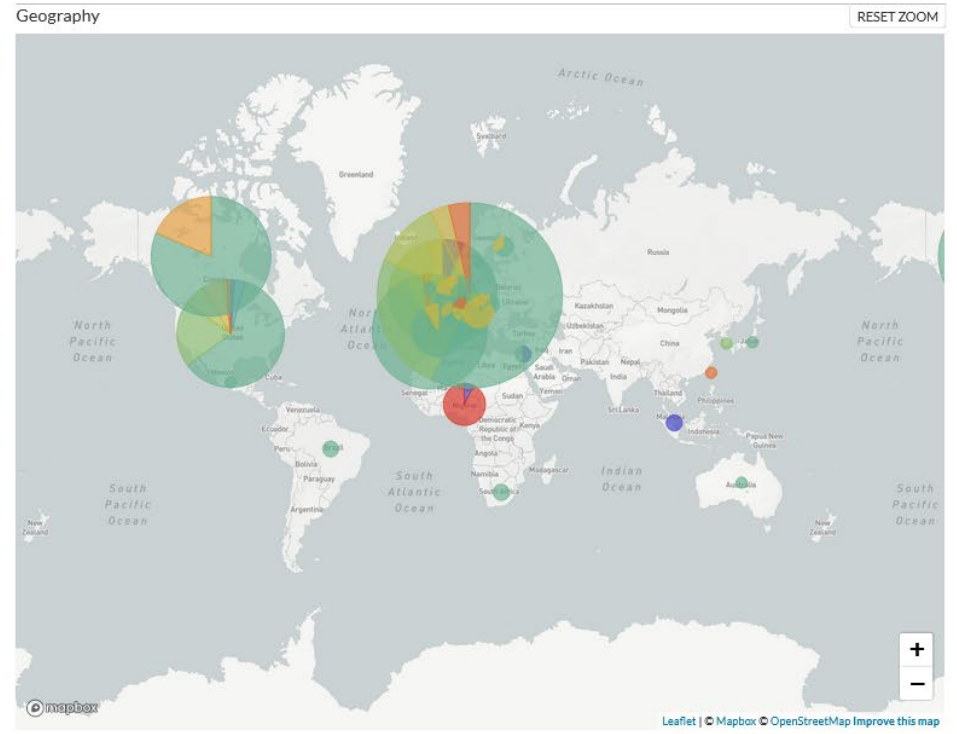
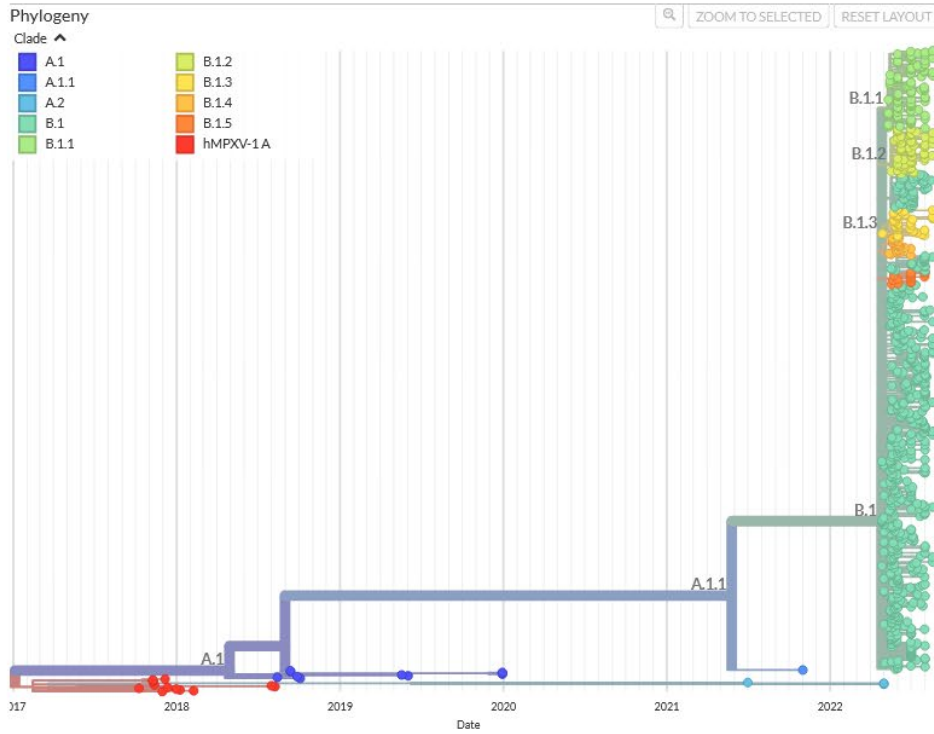
Monkeypox virus

<https://nextstrain.org/monkeypox/hmpxv1>

Genomic epidemiology of monkeypox virus

Built with [nextstrain/monkeypox](#). Maintained by [Nextstrain team](#). Enabled by data from [GenBank](#).

Showing 772 of 772 genomes sampled between Oct 2017 and Aug 2022.

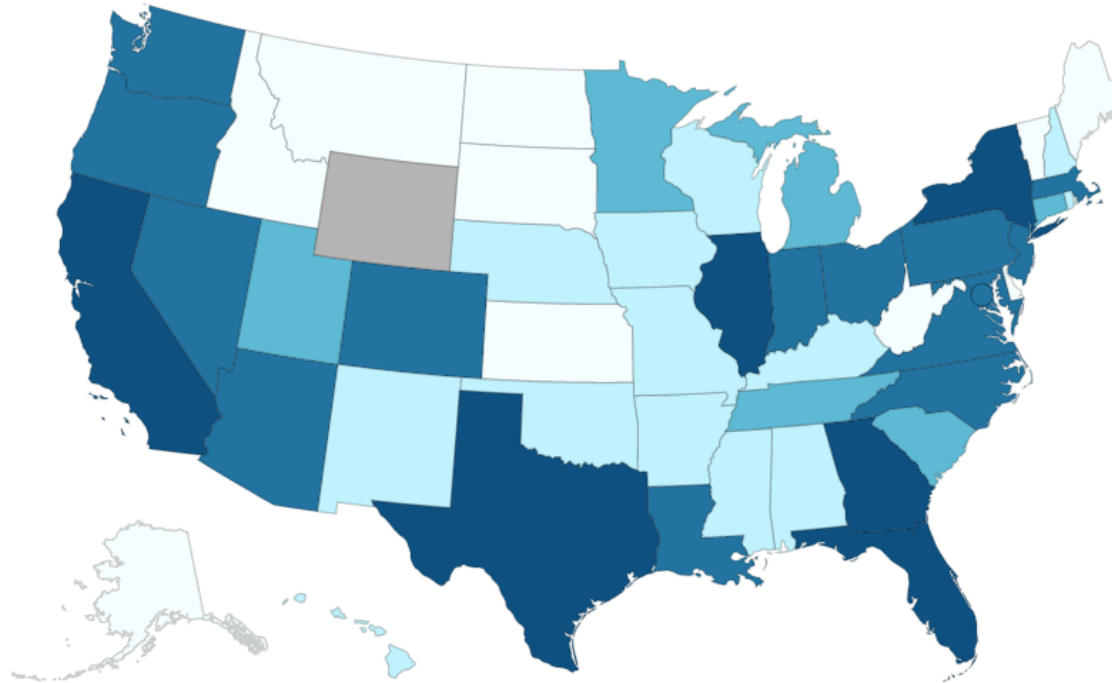


Monkeypox virus

https://www.cdc.gov/poxvirus/monkeypox/response/2022/us-map.html?fbclid=IwAR2gV951iYZVB9Q15PUD_htGDrrS8FZ5806zWelq9pn8D6ROiqTo2Fdrvs8

13,517 Total confirmed monkeypox/orthopoxvirus cases

*One Florida case is listed here but included in the United Kingdom case counts because the individual was tested while in the UK.



Territories **PR**



Case Range

- 0
- 1 to 10
- 11 to 50
- 51 to 100
- 101 to 500
- >500