



# Situation Summary

## Tuesday, July 19, 2022 - Day 860 of the Pandemic

### Update as of 2:30 PM

**Extraordinary Assumptions:** There are many different data sources in this report and not all of them match. This document is informational purposes only, the goal is to provide an overall picture of the current situation.

### COVID-19 by the Numbers

7/19/2022	Riverside	Imperial	Kern	Los Angeles*	Orange	San Bernardino	San Diego	San Luis Obispo	Santa Barbara	Ventura	California	United States	Global
Total Cases	647,328	60,550	259,504	3,042,708	620,414	618,482	857,262	59,437	97,600	193,965	9,674,553	89,329,839	559,469,605
Total Cases Per Capita	26,227	31,594	27,986	29,663	19,217	27,892	25,435	21,314	21,386	22,746	24,109	26,747	7,065
% of Total Cases/Population	26.23%	31.59%	27.99%	29.66%	19.22%	27.89%	25.43%	21.31%	21.39%	22.75%	24.11%	26.75%	7.07%
Recovered*	<a href="#">636,082</a>	<a href="#">53,684</a>	<a href="#">248,717</a>	<a href="#">Not Reported</a>	<a href="#">585,529</a>	<a href="#">601,522</a>	<a href="#">Not Reported</a>	<a href="#">Not Reported</a>	<a href="#">94,091</a>	<a href="#">Not Reported</a>	<a href="#">9,584,065</a>	<a href="#">86,752,569</a>	<a href="#">540,052,956</a>
% of total recovered/population	25.77%	28.01%	26.82%	Not Reported	18.14%	27.13%	Not Reported	Not Reported	20.62%	Not Reported	23.88%	25.98%	6.82%
Total Deaths	6,508	944	449	32,248	7,161	7,914	5,370	499	702	1,519	46,010	1,019,210	6,361,157
Deaths Per Capita	263.68	492.57	48.42	314.38	221.80	356.90	159.33	178.94	153.82	178.13	114.65	305.17	80.33
% of Total Deaths/Population	0.26%	0.49%	0.05%	0.31%	0.22%	0.36%	0.16%	0.18%	0.15%	0.18%	0.11%	0.31%	0.08%
% of State's Cases	6.69%	0.63%	2.68%	31.45%	6.41%	6.39%	8.86%	0.61%	1.01%	2.00%	10.83%	15.97%	
Total Hospital Beds	3,452	202	1,121	19,413	6,002	3,632	6,545	445	604	1,024	66,767		
Currently in Hospitals	213	15	90	1,252	281	240	422	16	52	73	4,489		
Hospital Beds Available**	3,239	187	1,031	18,161	5,721	3,392	6,123	429	552	951	62,278		
Total Hospital ICU Beds**	108	15	40	861	190	197	300	24	27	37	2,643		
Currently in ICU	12	0	15	151	40	29	47	3	5	6	507		
ICU Beds Available	96	15	25	710	150	168	253	21	22	31	2,136		
Case Fatality Rate	1.01%	1.56%	0.17%	1.06%	1.15%	1.28%	0.63%	0.84%	0.72%	0.78%	0.48%	1.14%	1.14%
Population***	2,468,145	191,649	927,251	10,257,557	3,228,519	2,217,398	3,370,418	278,862	456,373	852,747	40,129,160	333,976,981	7,918,710,000
% of State Population	6.15%	0.48%	2.31%	25.56%	8.05%	5.53%	8.40%	0.69%	1.14%	2.13%	12.02%	4.22%	

Sources: CDPH, WHO, CDC, Local County Data, LA Times, Worldometers

The date for which case statistics and hospital data were reported. Hospital COVID data are self-reported through a portal managed by the California Hospital Association and pulled at 2pm. COVID case statistics are reported by local health departments to CalREDIE and are pulled at 2pm. Hospital data and case statistics are integrated by the California Department of Technology and made available through the Open Data Portal the following morning. CA Open Data Portal is at least 24 Hours behind although a backlog of new case reports at the State level has ostensibly been cleared, some County dashboards still contain notes that indicate data are missing. (\*Many County sites do not report recovery rates or are only updating once a week)(\*\* based on calculation)(\*\*\*California Demographics from State Database Blueprint Data Chart 12-15-20 & census.gov)

**News**  
More detail on page 2

**A Closer Look**  
More detail on page 4

**US Data**  
More detail on page 7

**State Data**  
More detail on page 18

**County of Riverside**  
More detail on page 19

**Weather**  
More detail on page 22

**News** – The collection of news articles are related to COVID-19. The inclusion or order of articles is not intended to reflect their importance, nor is it intended to endorse the political viewpoints or affiliations included in news coverage.

### **COVID triples across Europe, hospitalizations double**

- The WHO said Tuesday that coronavirus cases have tripled across Europe in the past six weeks, accounting for nearly half of all infections globally. Hospitalization rates have also doubled, although intensive care admissions have remained low.
- In a statement on Tuesday, WHO's Europe director, Dr. Hans Kluge, described COVID-19 as "a nasty and potentially deadly illness" that people should not underestimate. He said super-infectious relatives of the omicron variant were driving new waves of disease across the continent and that repeat infections could potentially lead to long COVID.
- WHO said the 53 countries in its European region, which stretches to central Asia, reported nearly 3 million new coronavirus infections last week and that the virus was killing about 3,000 people every week. Globally, COVID-19 cases have increased for the past five weeks, even as countries have scaled back on testing.
- Earlier this week, editors of two British medical journals said the country's National Health Service has never before had so many parts of the system so close to collapsing.
- "With rising cases, we're also seeing a rise in hospitalizations, which are only set to increase further in the autumn and winter months," Kluge said. "This forecast presents a huge challenge to the health workforce in country after country, already under enormous pressure dealing with unrelenting crises since 2020."

<https://apnews.com/article/covid-health-united-nations-world-organization-06bccc307fa13d428e59babf4b9d8403>

### **Association of Blood Viscosity With Mortality Among Patients Hospitalized With COVID-19**

- COVID-19 hospital patients with high blood viscosity appear to have significantly higher death rates than other COVID patients, a new study shows.
- Using the electronic health records of 5,621 COVID-19 patients treated at six New York City-area hospitals between February 2020 and November 2021, researchers determined that those with thicker blood had 36% higher odds of dying than those with low blood viscosity due to the impact of COVID-19 on the body's cardiovascular system. "This study demonstrates the importance of checking for blood viscosity in COVID-19 patients early in hospital admission, which is easily obtained through routine lab work," Dr. Robert Rosenson of the Mount Sinai Health System said in a statement.

<https://www.sciencedirect.com/science/article/abs/pii/S0735109722051105>

### **CDC ends program help cruise ships report COVID outbreaks**

- The Centers for Disease Control and Prevention on Monday ended its COVID-19 monitoring program for cruise ships.
- The agency will no longer provide operators with surveillance and reporting tools for cases onboard ships in U.S. waters. "CDC has worked closely with the cruise industry, state, territorial, and local health authorities, and federal and seaport partners to provide a safer and healthier environment for cruise passengers and crew," the agency said in a website update.
- "Cruise ships have access to guidance and tools to manage their own COVID-19 mitigation programs." The CDC said it will offer updated guidance for cruise ships in the coming days. As to how passengers can know if a cruise line has outbreaks, the agency stated, "Cruise travelers have the option of contacting their cruise line directly regarding outbreaks occurring on board their ship."
- In 2020, the industry saw annual passenger embarkations decline by 81%. The CLIA says that nearly 100% of ships are expected to be in operation by August of this year.

<https://www.marketwatch.com/story/cdc-ends-reporting-covid-cases-on-cruise-ships-11658248181>

## **Fauci to retire by the end of Biden's term**

- Politico reported Monday that Fauci said he will retire by the end of Biden's term following more than five decades of federal service under seven different presidential administrations.
- The 81-year-old has been director of the National Institute of Allergy and Infectious Diseases (NIAID) since 1984, Reuters reported. He became the face of the American government's policies regarding efforts to mitigate the coronavirus pandemic in 2020.
- Fauci has worked for over 50 years in the American public health sector, advising every president since Ronald Reagan. During the COVID-19 pandemic, Dr. Fauci was a leading figure on both Donald Trump and Biden's coronavirus response teams.
- "We're in a pattern now. If somebody says, 'You'll leave when we don't have COVID anymore,' then I will be 105. I think we're going to be living with this," he said, saying the goal would be to get to a once-a-year COVID vaccination, like the flu, while recognizing that efforts so far have been stymied by the emergence of new variants sometimes becoming dominant in a matter of weeks.
- "What we have right now, I think we're almost at a steady state," he said.
- Fauci became the director of the NIAID in 1984 at the height of the HIV/AIDS epidemic in America. The majority of his research over the past four decades has sought to diagnose, treat and prevent HIV/AIDS, tuberculosis, Ebola, malaria, and other infectious diseases. Fauci advised President George W. Bush to sign the President's Emergency Plan for AIDS Relief (PEPFAR), funding \$90 billion for HIV/AIDS treatment, prevention, and research worldwide.
- In 2002, Bush awarded Fauci the Presidential Medal of Freedom.

<https://www.foxnews.com/politics/fauci-retire-end-bidens-term-report>

## **Why You'll Need to Get COVID-19 Boosters Again and Again**

- The effectiveness of a primary series of mRNA vaccines (two doses) to prevent hospitalization and death is also being chipped away by these highly immune-evasive variants.
- Vaccine-mediated protection became shorter-lived, especially with the emergence of Omicron variants. People look at these data and wonder, what is the point of getting the vaccines if they will not prevent symptomatic infections, & the protection does not last?
- Well, to expect robust protection from just the primary series of any vaccines is unreasonable—and was always likely to be—but somehow society has placed too high a bar on what is considered an acceptable number of doses for COVID-19 vaccines. Instead, we need to understand that we're going to be getting boosters in the foreseeable future, and to appreciate their benefits.
- Vaccines against other infectious diseases are given in multiple doses. Many of our childhood vaccines require multiple doses some as many as 5 doses.. are all commonly given before the age of 18 years.
- COVID-19 vaccines also need booster doses for the same reasons. We need to educate, maintain, and improve T and B cell responses to prevent severe disease. Boosters provide significant benefits to people who received the primary series in preventing hospitalization and death.
- We need improved boosters that can provide more durable protection, are effective against variants we encounter moving forward, and do a better job of preventing infection and blocking transmission. For example, booster-induced immune protection wanes within 4-6 months during the current Omicron period. We need vaccine strategies that provide more durable protection.

<https://time.com/6198402/covid-19-boosters/>

## **Moderna's new variant-busting COVID vaccine starting trial in Israel**

- An Israeli hospital announced Monday that it is part of a trial for Moderna's new variant-busting coronavirus vaccine.
- Experts say that the testing and launch of variant-proof vaccines will be a game-changer for the pandemic.

<https://www.timesofisrael.com/modernas-new-variant-busting-covid-vaccine-starting-trial-in-israel/>

## Will the BA.5 COVID strain force new mask mandates?

- “Start Here” podcast spoke on Monday with John Brownstein, Chief Innovation Officer at Boston's Children's Hospital, professor at Harvard Medical School and ABC News Medical contributor, about best practices for protecting people against this latest variant.
- The new COVID-19 variant, called BA.5, has been rapidly spreading across the country and is now estimated to make up more than 60% of new cases, according to the CDC. It is highly transmissible, compared to previous variants, and seemingly more resistant to prior vaccinations and immunities.
- These factors are making people think differently about wearing masks, which experts say are still an effective way to curb the spread of the virus. Los Angeles County, for example, will likely reinstate an indoor mask mandate at the end of the month due to rising COVID-19 cases.
- BROWNSTEIN: Well, first, it's really important to note that the tools that we have still work. If you're fully up to date with your vaccines, especially if you're on that booster and that second booster, if eligible, it dramatically reduces your risk of severe illness and death.

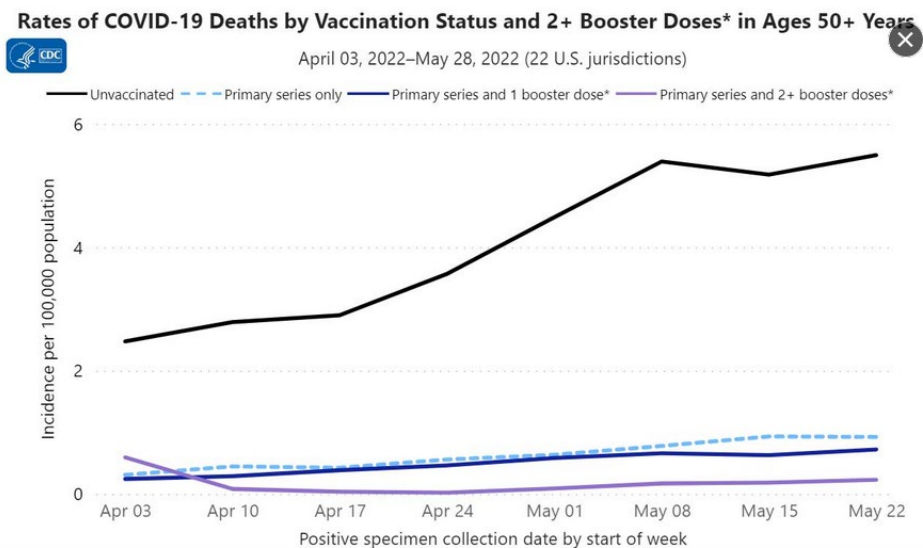
<https://abcnews.go.com/Health/ba5-covid-strain-force-mask-mandates/story?id=87009430>

## A Closer Look

### Learn More about BA.4 and BA.5 and Recent Booster Data

<https://www.cdc.gov/coronavirus/2019-ncov/covid-data/covidview/index.html#closerlook>

In recent weeks, CDC has monitored increases in the BA.4 and BA.5 lineages of [Omicron](#). As of the week ending July 9, 2022, BA.4 and BA.5 represent an estimated 16.3% and 65.0% respectively, of the [SARS-CoV-2 variants](#) currently circulating in the United States. Data suggest that these lineages could be more transmissible than previous Omicron sublineages. However, there is no evidence currently available to suggest that BA.4 and BA.5 cause more severe disease than other variants or Omicron lineages. CDC is continuing to assess the impact that BA.4 and BA.5 have on public health.



# Next Strain

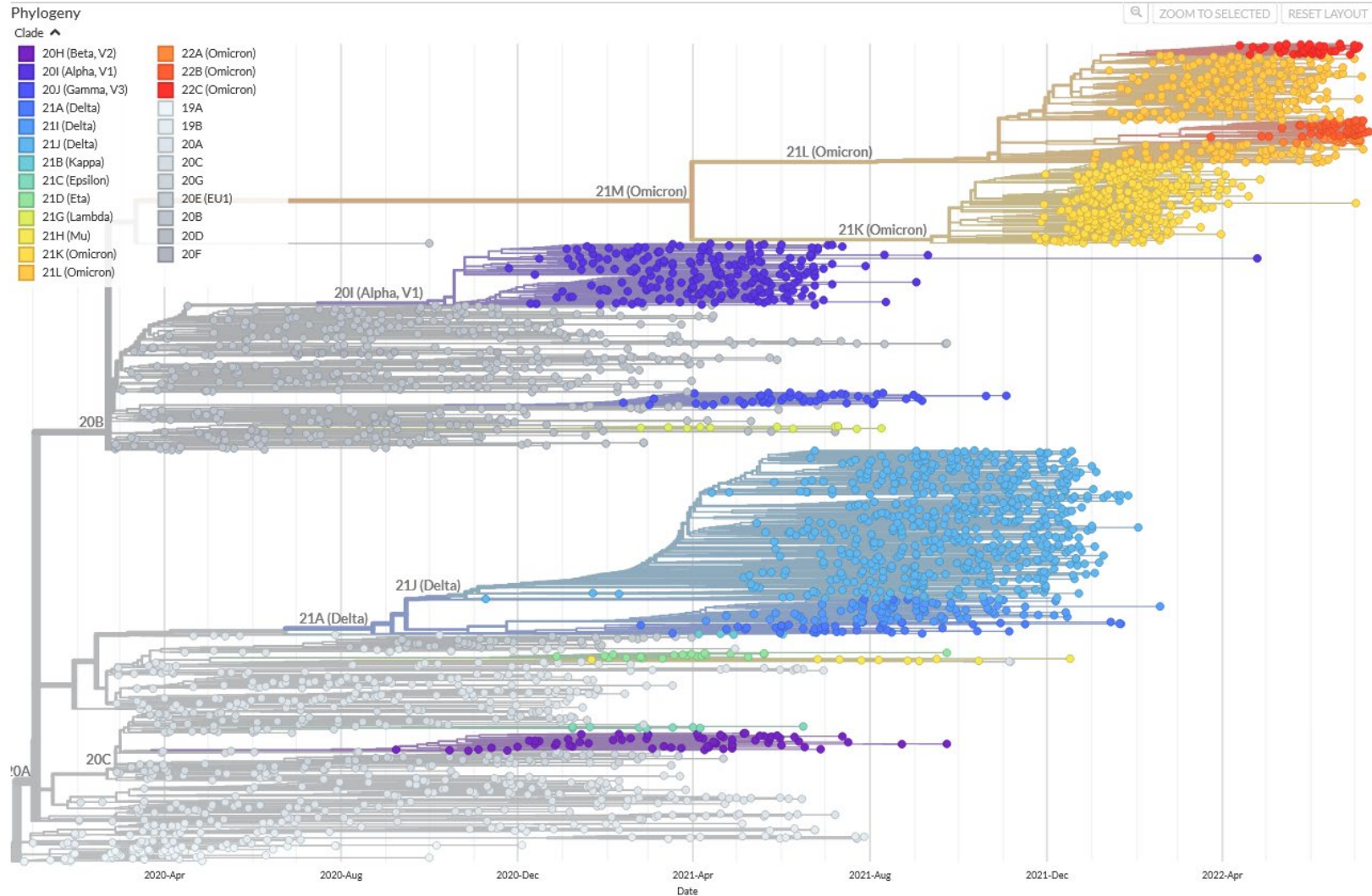
## COVID-19

<https://nextstrain.org/nextclade/sars-cov-2>

### Genomic epidemiology of SARS-CoV-2 with subsampling focused globally since pandemic start

Built with [nextstrain/ncov](#). Maintained by the [Nextstrain team](#). Enabled by data from [GISAID](#).

Showing 3055 of 3055 genomes sampled between Dec 2019 and Jul 2022.



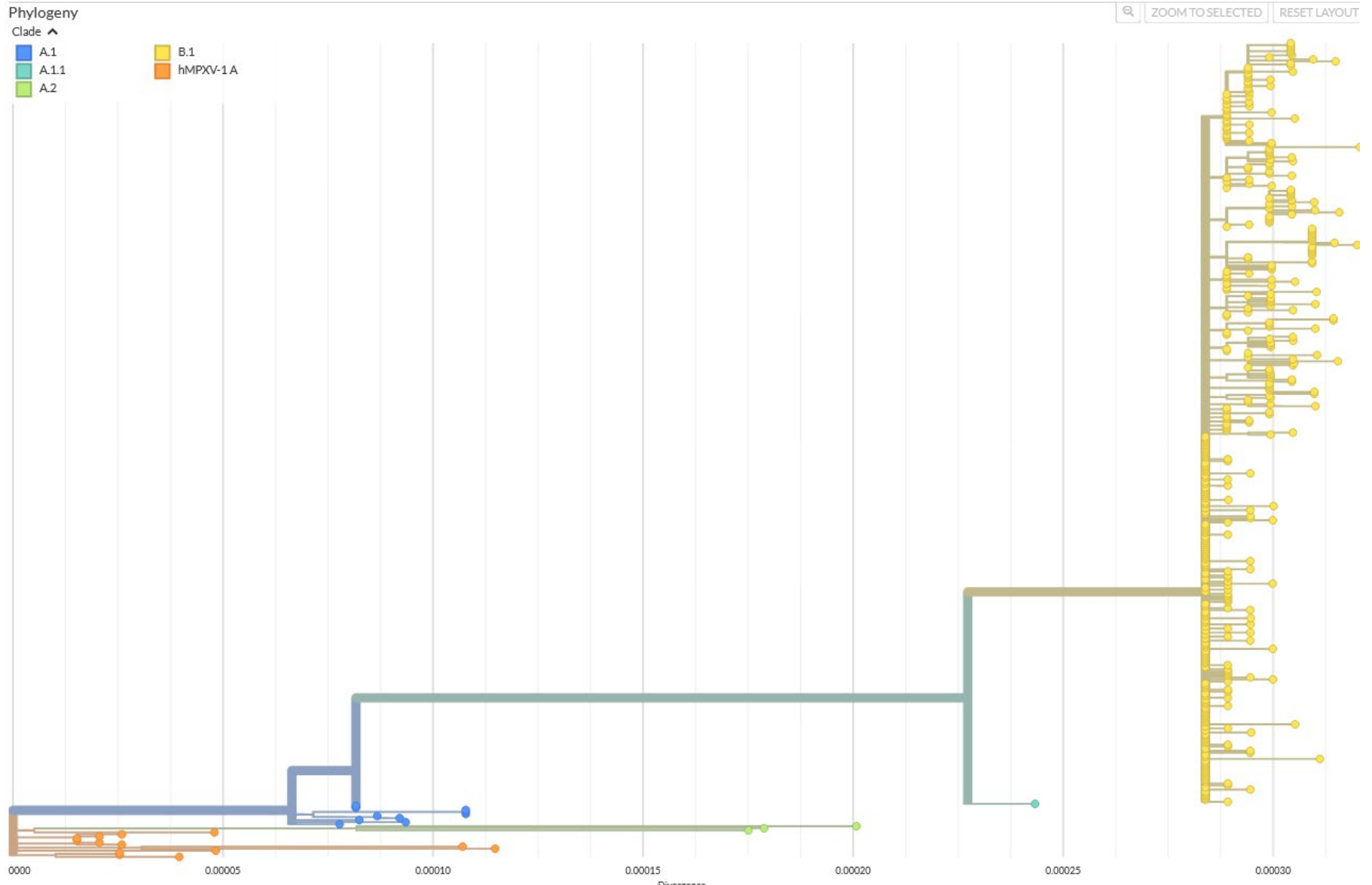
# Monkeypox virus

<https://nextstrain.org/monkeypox/hmpxv1>

## Genomic epidemiology of monkeypox virus

Built with [nextstrain/monkeypox](#). Maintained by [Nextstrain team](#). Enabled by data from [GenBank](#).

Showing 400 of 400 genomes sampled between Oct 2017 and Jul 2022.





# U. S. Data

[https://covid.cdc.gov/covid-data-tracker/#cases\\_casesper100klast7days](https://covid.cdc.gov/covid-data-tracker/#cases_casesper100klast7days)

## United States

At a Glance

Cases Total **89,329,839**  
Case Trends

Deaths Total **1,019,210**  
Death Trends

Current Hosp. **21,648**  
Admission Trends

34.2% of People 5+ with First Booster

TOTAL CASES  
**89,329,839**  
+44,690 New Cases

7 DAY CASE RATE PER 100,000  
**258.6**

TOTAL DEATHS  
**1,019,210**  
+35 New Deaths

CDC | Data as of: Monday, July 18, 2022 2:47 PM ET. Posted: Monday, July 18, 2022 3:51 PM ET

[Back to Vaccination Distribution & Coverage](#)

## COVID-19 Vaccinations in the United States

Maps, charts, and data provided by CDC, updates weekly on Thursday by 8pm ET

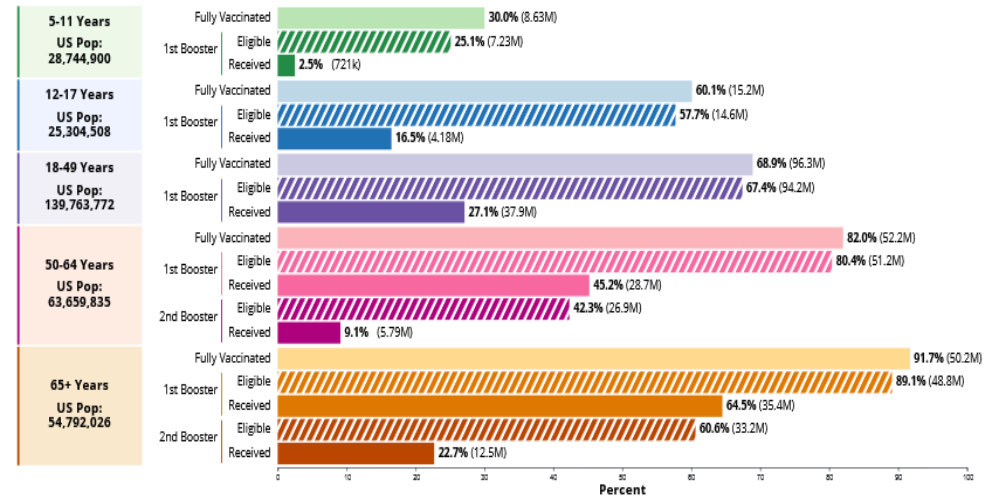
The percent of the population coverage metrics are capped at 95%. Learn how CDC estimates vaccination coverage.

Total Vaccine Doses		At Least One Dose			
		Fully Vaccinated	First Booster Dose	Second Booster Dose	
		Count		Percent of US Population	
Distributed	779,563,765	260,728,030		78.5%	
Administered	599,289,113	260,169,337		83.3%	
399.65k Children < 5 years of age with at least one dose since June 18, 2022		249,581,282		88%	
107.0M People with a first booster dose**		231,837,497		89.8%	
19.3M People with a second booster dose***		57,269,410		95%	

About These Data | View Footnotes and Download Data

CDC | Data as of: July 13, 2022 6:00am ET. Posted: July 14, 2022

## Primary Series Completion, Booster Dose Eligibility, and Booster Dose Receipt by Age, United States



## COVID-19 by County - Know Your COVID-19 Community Level

COVID-19 Community Levels are a new tool to help communities decide what prevention steps to take based on the latest data. Levels can be low, medium, or high and are determined by looking at hospital beds being used, hospital admissions, and the total number of new COVID-19 cases in an area. Take precautions to protect yourself and others from COVID-19 based on the COVID-19 Community Level in your area.

[https://www.cdc.gov/coronavirus/2019-ncov/your-health/covid-by-county.html?ACSTrackingID=USCDC\\_2067-DM85947&ACSTrackingLabel=Know%20Your%20COVID-19%20Community%20Level&deliveryName=USCDC\\_2067-DM85947](https://www.cdc.gov/coronavirus/2019-ncov/your-health/covid-by-county.html?ACSTrackingID=USCDC_2067-DM85947&ACSTrackingLabel=Know%20Your%20COVID-19%20Community%20Level&deliveryName=USCDC_2067-DM85947)

California  Riverside County

[< Start Over](#)

### ● Medium

In **Riverside County, California**, community level is **Medium**.

- If you are [at high risk for severe illness](#), talk to your healthcare provider about whether you need to wear a mask and take other precautions
- Stay [up to date](#) with COVID-19 vaccines
- [Get tested](#) if you have symptoms

People may choose to mask at any time. People with symptoms, a positive test, or exposure to someone with COVID-19 should wear a mask.

If you are immunocompromised, learn more about [how to protect yourself](#).

Find out more about the COVID-19 situation in **Riverside County, California** with [COVID-19 Data Tracker](#).

July 14, 2022



## COVID-19 County Check

Find community levels and prevention steps by county. Data updated weekly.

Select a Location (all fields required)

State

County

Go

## What Prevention Steps Should You Take Based on Your COVID-19 Community Level?

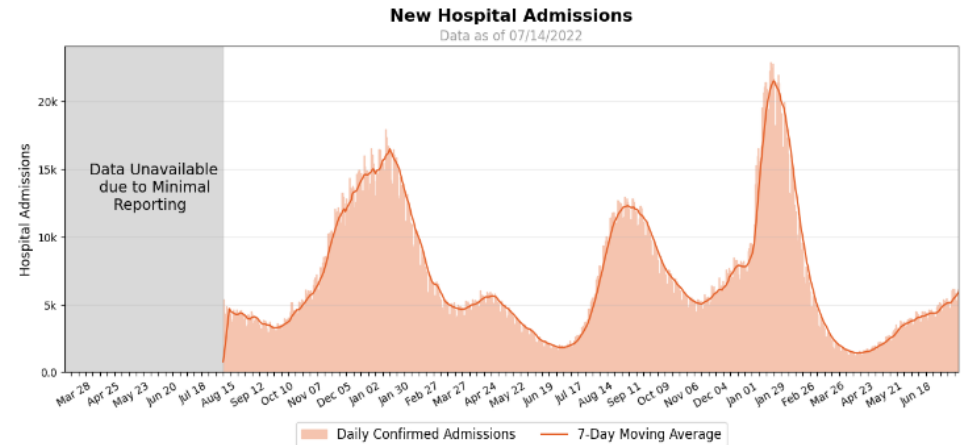
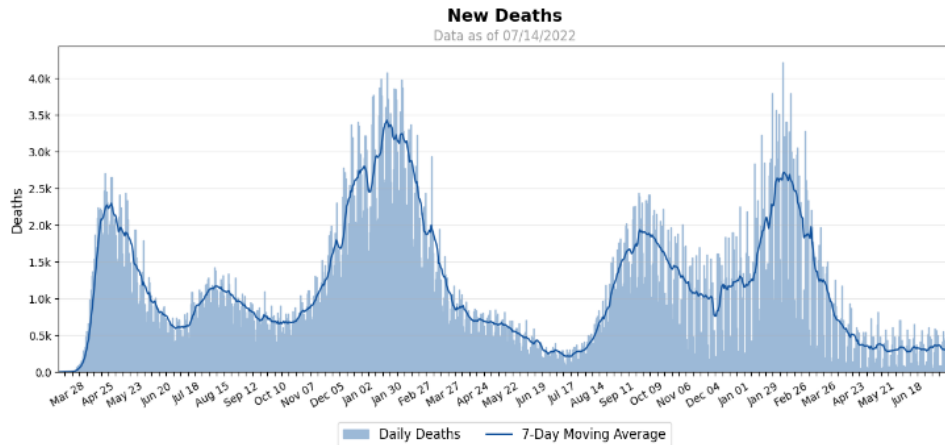
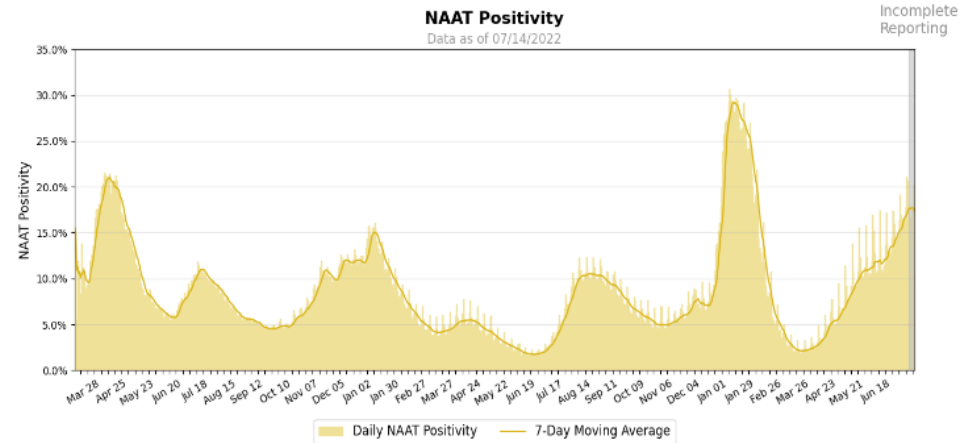
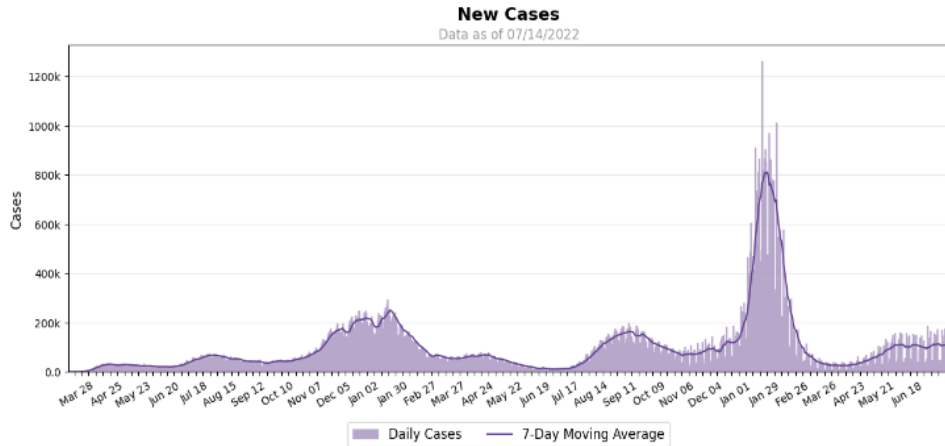
Low	Medium	High
<ul style="list-style-type: none"><li>• Stay <a href="#">up to date</a> with COVID-19 vaccines</li><li>• <a href="#">Get tested</a> if you have symptoms</li></ul>	<ul style="list-style-type: none"><li>• If you are <a href="#">at high risk for severe illness</a>, talk to your healthcare provider about whether you need to wear a mask and take other precautions</li><li>• Stay <a href="#">up to date</a> with COVID-19 vaccines</li><li>• <a href="#">Get tested</a> if you have symptoms</li></ul>	<ul style="list-style-type: none"><li>• Wear a <a href="#">mask</a> indoors in public</li><li>• Stay <a href="#">up to date</a> with COVID-19 vaccines</li><li>• <a href="#">Get tested</a> if you have symptoms</li><li>• Additional precautions may be needed for people <a href="#">at high risk for severe illness</a></li></ul>



# COVID-19 Community Profile Report 07-14-2022

<https://beta.healthdata.gov/Health/COVID-19-Community-Profile-Report/gqxm-d9w9>

## NATIONAL TIME SERIES



Source: CDC state-reported data (cases and deaths), Unified Testing Dataset, Unified Hospital Dataset.

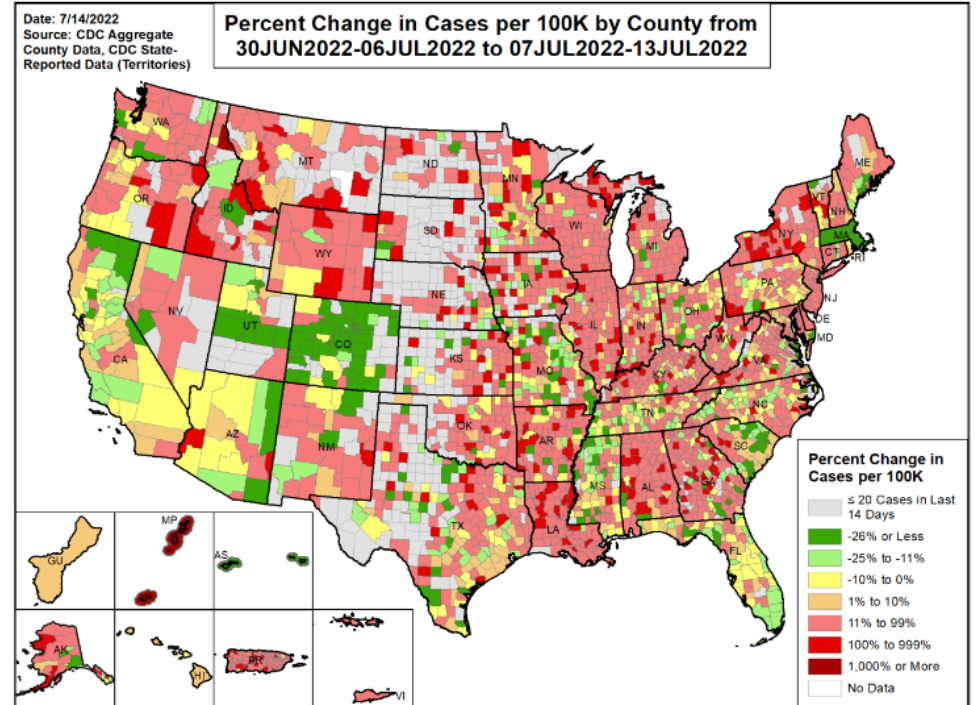
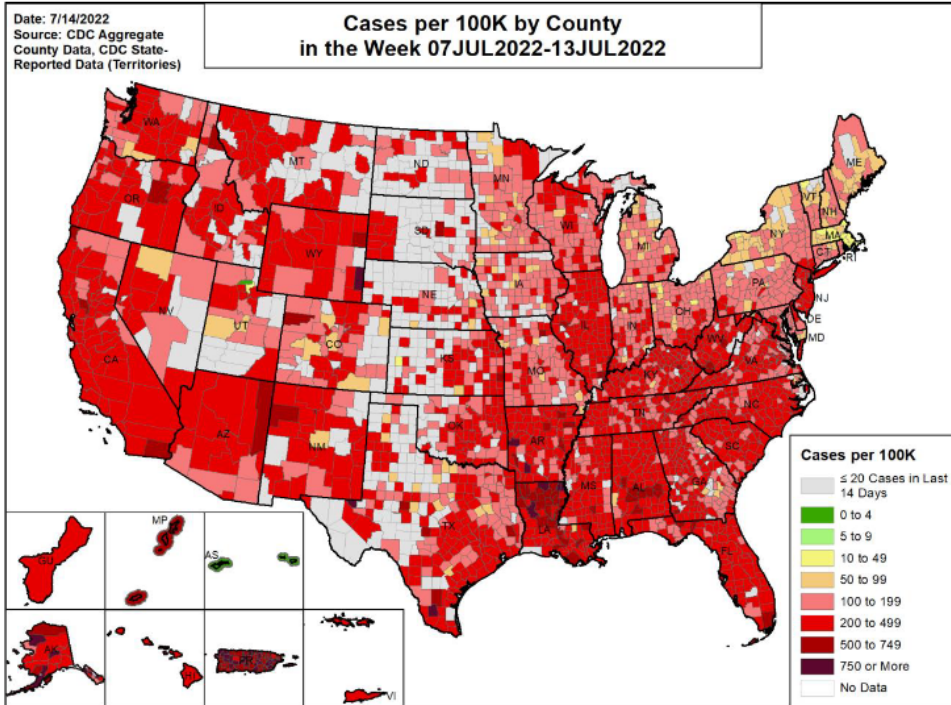
INITIAL PUBLIC RELEASE // SUBJECT TO CHANGE



# CASE INCIDENCE IN LAST 7 DAYS AND COMPARISON TO THE PREVIOUS 7 DAYS

Incidence Rate in the Last 7 Days: 261.5 per 100,000

Percent Change from Previous 7 Days: +15.7%



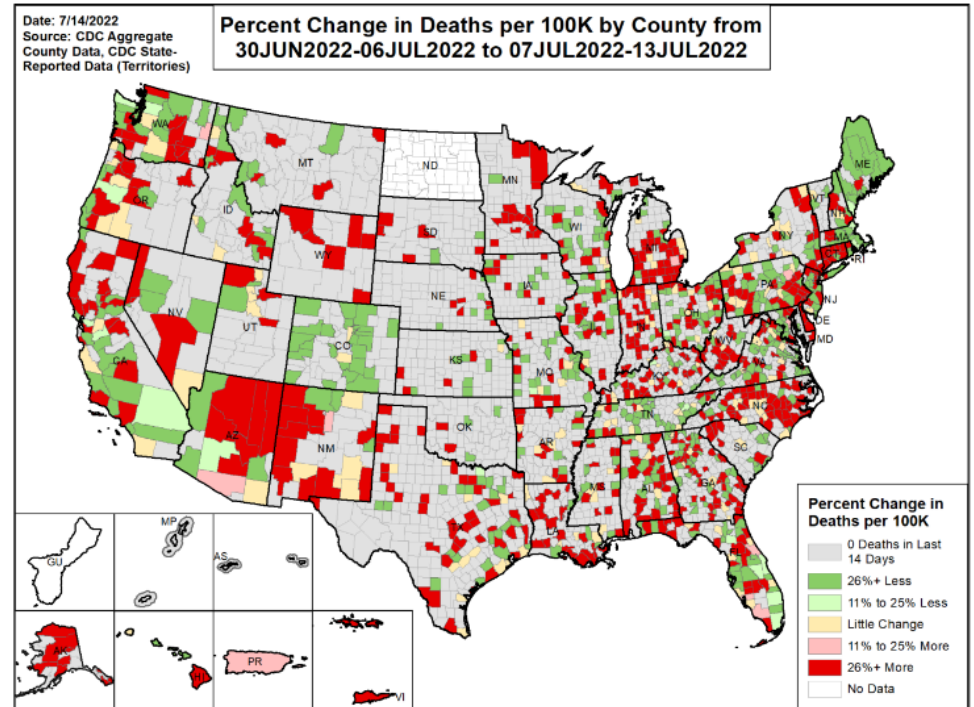
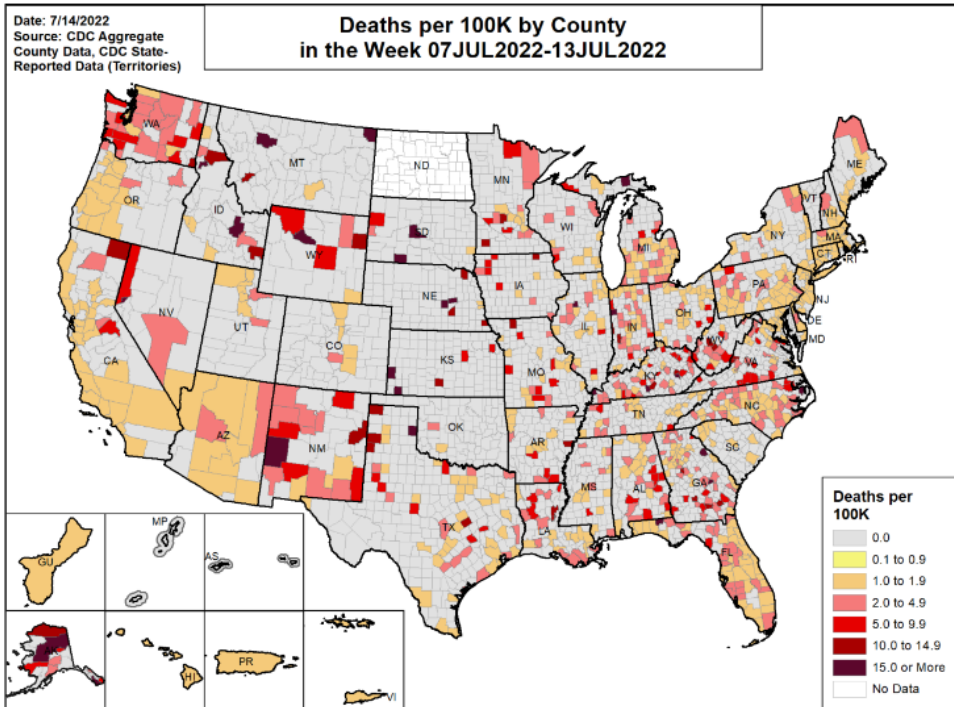
INITIAL PUBLIC RELEASE // SUBJECT TO CHANGE



# MORTALITY RATE IN THE LAST 7 DAYS AND COMPARISON TO THE PREVIOUS 7 DAYS

Mortality Rate in the Last 7 Days: 0.7 deaths per 100,000

Percent Change from Previous 7 Days: +12.6%



As of 4/7/2022, ND is no longer reporting county-level deaths; therefore, county-level death counts from this date forward are no longer available.

INITIAL PUBLIC RELEASE // SUBJECT TO CHANGE

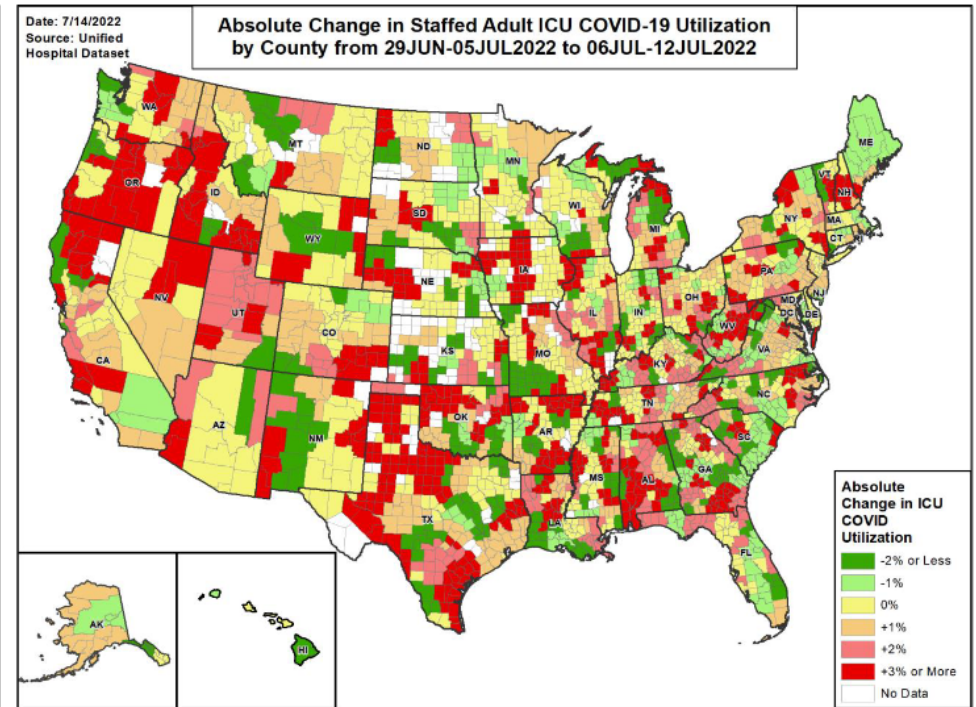
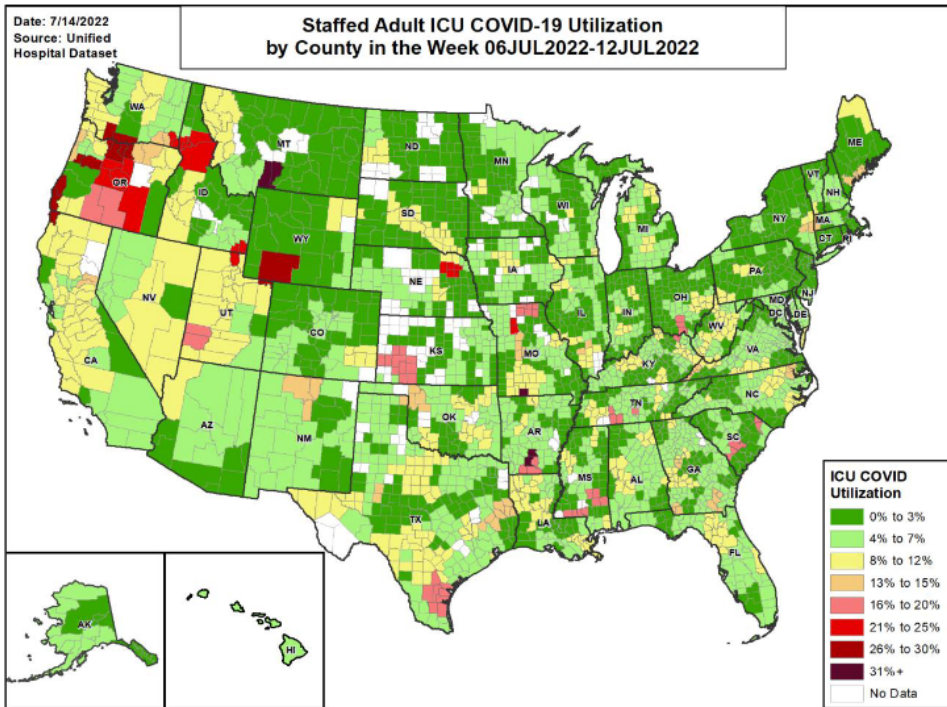


# STAFFED ADULT ICU COVID-19 UTILIZATION IN THE LAST 7 DAYS AND COMPARISON TO THE PREVIOUS 7 DAYS

Average Daily Adult ICU COVID-19 Patients over Last 7 Days:

3,905

Percent Change from Previous 7 Days: +13.5%

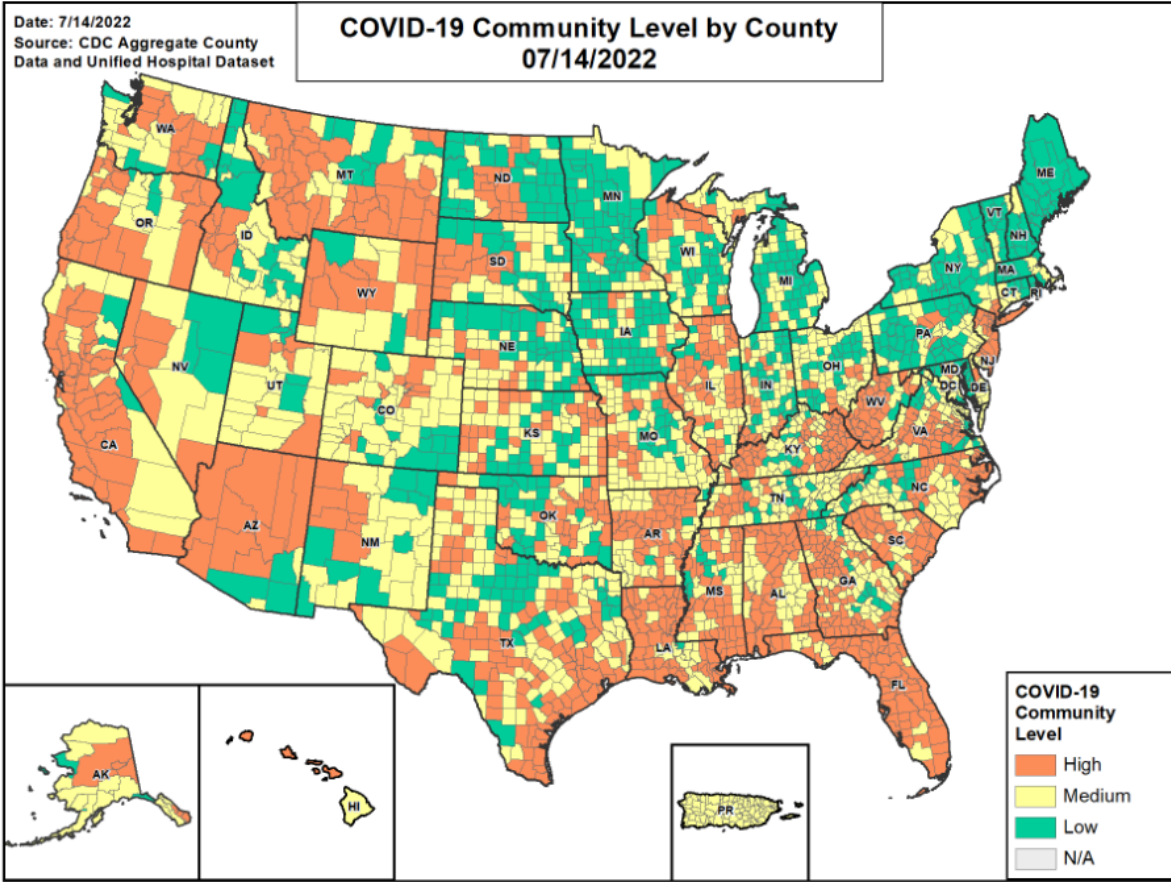


**Source:** Unified Hospital Dataset, excluding psychiatric, rehabilitation, and religious non-medical hospitals. Staffed adult ICU COVID-19 utilization indicates average percentage of staffed adult ICU beds occupied by confirmed COVID-19 patients within the given time period. County data is mapped from Health Service Areas, defined as a single county or cluster of counties that are generally self contained with respect to hospital care. See Data Sources/Methods slides for additional details.

INITIAL PUBLIC RELEASE // SUBJECT TO CHANGE



# COVID-19 COMMUNITY LEVEL



### Counties by COVID-19 Community Level Component Metrics

< 200 Cases per 100k

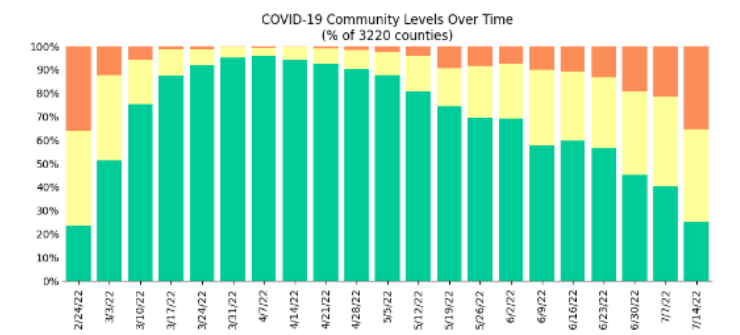
Admissions per 100k	< 10.0	10.0 - 19.9	20.0 +
# of counties (change)	804 (↓493)	624 (↑29)	77 (↓6)
% of counties (change)	25.0% (↓15.3%)	19.4% (↑0.9%)	2.4% (↓0.2%)
COVID Inpatient Occupancy	< 10.0%	10.0% to 14.9%	15.0% +
# of counties (change)	1,493 (↓470)	8 (↑1)	1 (↓1)
% of counties (change)	46.4% (↓14.6%)	0.2% (↑0.0%)	0.0% (↓0.0%)

200 + Cases per 100k

Admissions per 100k	N/A	< 10.0	10.0 +
# of counties (change)	N/A	654 (↑11)	1,061 (↑459)
% of counties (change)	N/A	20.3% (↑0.3%)	33.0% (↑14.3%)
COVID Inpatient Occupancy	N/A	< 10.0%	10.0% +
# of counties (change)	N/A	1,686 (↑456)	29 (↑14)
% of counties (change)	N/A	52.4% (↑14.2%)	0.9% (↑0.4%)

### Counties by COVID-19 Community Level

Category	Low	Medium	High
# of counties (change)	804 (↓490)	1,275 (↑42)	1,141 (↑448)
% of counties (change)	25.0% (↓15.2%)	39.6% (↑1.3%)	35.4% (↑13.9%)
% of population (change)	15.4% (↓10.5%)	30.1% (↓11.0%)	54.5% (↑21.5%)



Source: CDC Aggregate County Dataset (cases), Unified Hospital Dataset (admissions)  
 Notes: Cases data from July 7-13, 2022, hospital data from July 6-12, 2022. COVID-19 Community Level is determined by the higher of the new admissions and inpatient bed metrics, based on the current level of new cases per 100,000 population in the past 7 days. Admissions per 100k refers to the 7-day total of confirmed COVID-19 hospital admissions. COVID Inpatient Occupancy refers to the percent of staffed inpatient beds occupied by a COVID-19 patient (7-day average). A county is N/A if hospital data is not available. County data is mapped from Health Service Areas, defined as a single county or cluster of counties that are generally self-contained with respect to hospital care. Previous week levels are computed based on current data. See Data Sources/Methods slides for additional details.

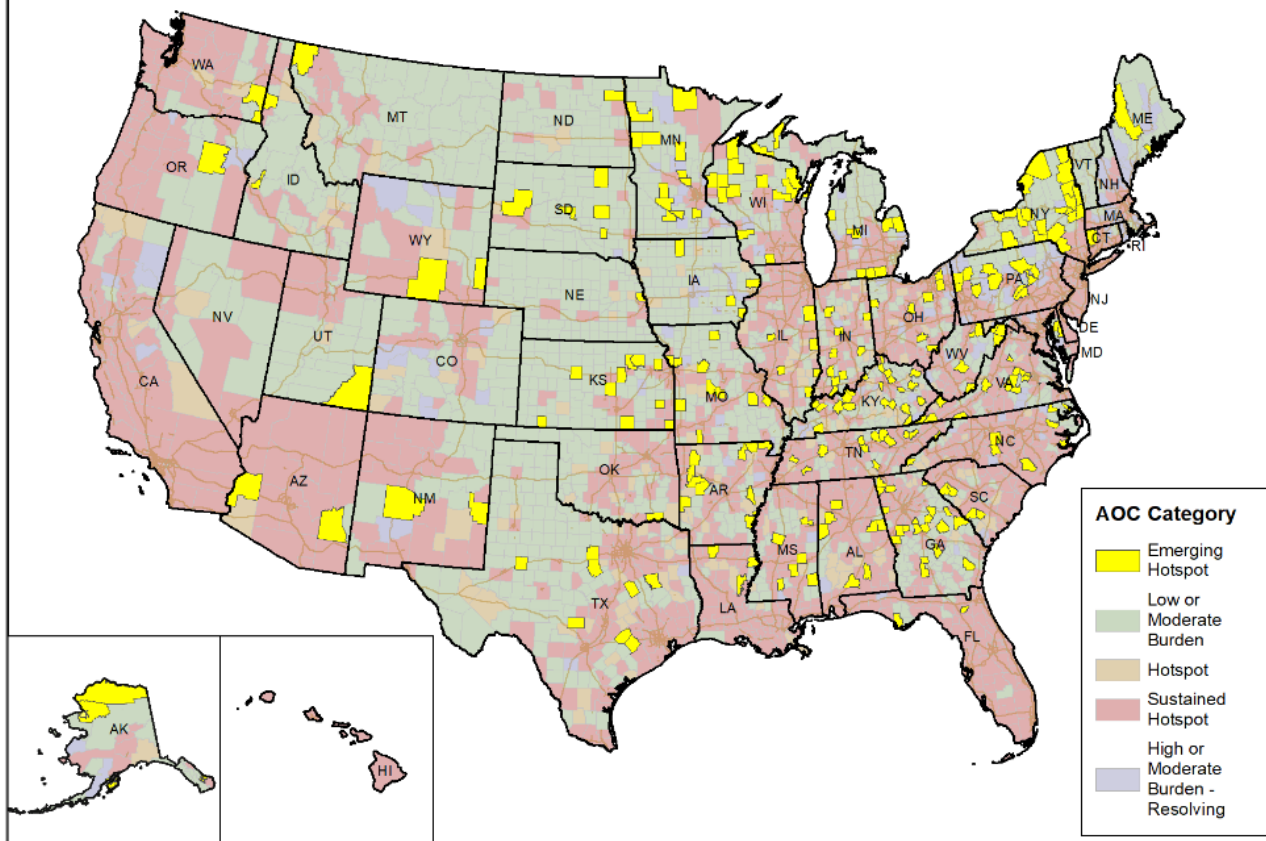
INITIAL PUBLIC RELEASE // SUBJECT TO CHANGE



# AREA OF CONCERN CONTINUUM

Date: 7/14/2022

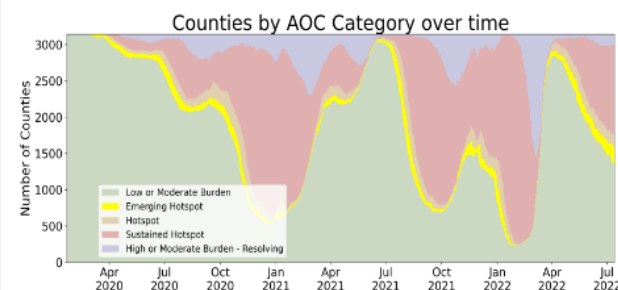
## Area of Concern Continuum by County 13JUL2022



The Areas of Concern Continuum (AOC) is used to describe communities as they progress through stages of the epidemic. There are 7 possible AOC classifications based on current and recent history of case and testing data for the location:

- (1) **Low Burden** – communities with minimal activity
- (2) **Moderate Burden** – communities with moderate disease activity
- (3) **Emerging Hotspot** – communities with a high likelihood to become hotspots in the next 1-7 days
- (4) **Hotspot** – communities that have reached a threshold of disease activity considered as being of high burden
- (5) **Sustained Hotspot** – communities that have had a high sustained case burden and may be higher risk for experiencing healthcare resource limitations
- (6) **High Burden – Resolving** – communities that were recently identified as hotspots and are now improving
- (7) **Moderate Burden – Resolving** – communities that have a moderate level of burden, but are demonstrating improvement

See Data Sources/Methods slides for more information.



INITIAL PUBLIC RELEASE // SUBJECT TO CHANGE



## COVID-19 By the Numbers













<https://www.cdc.gov/coronavirus/2019-ncov/cdcresponse/by-the-numbers.html>

# COVID-19 RESPONSE BY THE NUMBERS

## As of July 18, 2022



Accessible [www.cdc.gov/coronavirus/2019-ncov/cdcresponse/by-the-numbers.html](https://www.cdc.gov/coronavirus/2019-ncov/cdcresponse/by-the-numbers.html)

	<b>10,375</b>	CDC personnel supporting the outbreak response		<b>63.19+ million</b>	Times people have used CDC's online Coronavirus Self-Checker
	<b>1,947</b>	CDC deployers who have conducted <b>4,754</b> deployments to <b>376</b> cities across the United States and abroad		<b>1.7+ million</b>	Calls and emails to CDC-INFO
	<b>464</b>	COVID-19 studies published in CDC's Morbidity and Mortality Weekly Report (MMWR)		<b>4.1+ billion</b>	Times people have looked for information on CDC websites
	<b>11,508</b>	Documents providing information and guidance for government agencies, businesses, and the public		<b>5.1+ billion</b>	Social media impressions on <b>22,101</b> CDC response-related posts
	<b>927+ million</b>	COVID-19 tests conducted by public and private laboratories in the United States		<b>106,295+</b>	Inquiries from doctors, nurses, or other clinical staff and health departments received by CDC
	<b>260+ million</b>	People who have received at least one dose of a COVID-19 vaccine		<b>222+ million</b>	People who have been fully vaccinated with a COVID-19 vaccine

[cdc.gov/coronavirus](https://www.cdc.gov/coronavirus)

CS316565-A

## CDC What's New & Updated

<https://www.cdc.gov/coronavirus/2019-ncov/whats-new-all.html>

- [7/18/22COVID-19 Vaccine Reporting Systems](#)
- [7/18/22Cases in the U.S.](#)
- [7/17/22v-safe COVID-19 Vaccine Pregnancy Registry](#)
- [7/17/22Selected Adverse Events Reported after COVID-19 Vaccination](#)
- [7/15/22EARLY RELEASE: Effectiveness of 2, 3, and 4 COVID-19 mRNA Vaccine Doses Among Immunocompetent Adults During Periods when SARS-CoV-2 Omicron BA.1 and BA.2/BA.2.12.1 Sublineages Predominated — VISION Network, 10 States, December 2021–June 2022](#)
- [7/14/22New COVID-19 Vaccine Effectiveness Data Showcase Protection Gained by 3rd and 4th Doses](#)
- [7/14/22Social Media Toolkit: COVID-19 Vaccines for Children/Teens](#)
- [7/14/22COVID-19 Vaccine Monitoring Systems for Pregnant People](#)
- [7/14/22COVID-19 Vaccines and Severe Allergic Reactions](#)
- [7/14/22Understanding mRNA COVID-19 Vaccines](#)
- [7/14/22Ensuring the Safety of COVID-19 Vaccines in the United States](#)
- [7/14/22COVID Data Tracker Weekly Review](#)
- [7/14/22Interim Guidelines for Collecting, Handling, and Testing Clinical Specimens for COVID-19](#)
- [7/14/22Safety Monitoring of COVID-19 mRNA Vaccine First Booster Doses Among Persons Aged ≥12 Years with Presumed Immunocompromise Status — United States, January 12, 2022–March 28, 2022](#)
- [7/14/22Pediatric HIV Case Identification Across 22 PEPFAR-Supported Countries During the COVID-19 Pandemic, October 2019–September 2020](#)
- [7/14/22COVID Data Tracker Recent Updates - 2022-07-14 - The County View tab now displays data on first booster doses for people 5 years and older, by county.](#)
- [7/14/22COVID Data Tracker Recent Updates - 2022-07-14 - The Vaccine Effectiveness tab was updated to include a new vaccine effectiveness study published in June 2022.](#)
- [7/13/22Information About Johnson & Johnson's Janssen COVID-19 Vaccine](#)
- [7/13/22Archive of COVID-19 Vaccination Data Updates](#)
- [7/13/22Requirement for Proof of COVID-19 Vaccination for Air Passengers](#)
- [7/13/22Investigating Long-Term Effects of Myocarditis](#)
- [7/13/22COVID-19 Vaccines for People Who Would Like to Have a Baby](#)
- [7/13/22Myocarditis and Pericarditis Following mRNA COVID-19 Vaccination](#)
- [7/13/22Your COVID-19 Vaccination](#)
- [7/13/22COVID-19 Vaccines While Pregnant or Breastfeeding](#)
- [7/13/22Information about the Moderna COVID-19 Vaccine](#)
- [7/13/22Information about the Pfizer-BioNTech COVID-19 Vaccine](#)



- [7/13/22 Possible Side Effects After Getting a COVID-19 Vaccine](#)
- [7/13/22 Overall US COVID-19 Vaccine Distribution and Administration Update as of Wed, 13 Jul 2022 06:00:00 EST](#)

## CDC Guidance

<https://www.cdc.gov/coronavirus/2019-ncov/communication/guidance-list.html?Sort=Date%3A%3Adesc>

### [Interim Guidelines for Collecting and Handling of Clinical Specimens for COVID-19 Testing](#)

Find guidelines for healthcare providers and local and state health departments on collecting, handling, and testing clinical specimens for COVID-19. Date: 7/14/22

### [Post-COVID Conditions: CDC Science](#)

CDC is analyzing healthcare data, partnering with clinicians, and working with researchers to learn more about post-COVID conditions (Long COVID). Date: 6/16/22

### [Operational Considerations for Maintaining Essential Services and Providing Maternal, Newborn, and Child Healthcare in Low-Resource Countries](#)

Find information on maintaining essential maternal, newborn, and child health services in low-resource settings during COVID-19, including telehealth. Date: 6/7/22

### [Diagnosis](#)

Clinicians, learn about testing for current COVID-19, laboratory testing considerations, radiographic considerations, and risk factors for severe illness when caring for patients with a confirmed COVID-19. Date: 5/26/22

### [Operational Guidance for K-12 Schools and Early Care and Education Programs to Support Safe In-Person Learning](#)

Operational guidance on COVID-19 prevention for K-12 schools and Early Care and Education (ECE)/childcare programs Date: 5/26/22

### [Interim Infection Prevention and Control Recommendations for Healthcare Personnel During the Coronavirus Disease 2019 \(COVID-19\) Pandemic](#)

See infection prevention and control (IPC) guidance and practices for healthcare personnel when caring for patients, with or without COVID-19. Date: 5/26/22

### [CDC COVID-19 Response Health Equity Strategy: Accelerating Progress Towards Reducing COVID-19 Disparities and Achieving Health Equity](#)

Learn about the steps CDC is taking to reduce health disparities using data-driven approaches to foster engagement, lead outreach, and reduce stigma. Date: 5/17/22

### [Interim Guidelines for Collecting and Handling of Clinical Specimens for COVID-19 Testing](#)

Find guidelines for healthcare providers and local and state health departments on collecting, handling, and testing clinical specimens for COVID-19. Date: 5/17/22



## State Data

<https://covid19.ca.gov/>

The SMARTER Plan is the next phase of California's COVID-19 response

<https://covid19.ca.gov/smarter/>



Office of Governor  
**GAVIN NEWSOM**

Press Releases, Executive Orders,  
Media Advisories, and Proclamations.

<https://www.gov.ca.gov/newsroom/>

## Tracking COVID-19

<https://update.covid19.ca.gov/#top>

<https://www.cdph.ca.gov/Programs/CID/DCDC/Pages/Immunization/ncov2019.aspx#>

<https://www.cdph.ca.gov/Programs/CID/DCDC/Pages/COVID-19/CovidDataAndTools.aspx>

## California Healthy Places Index

<https://covid19.healthyplacesindex.org/>

<https://map.healthyplacesindex.org/>

## CDPH Statewide Guidance

<https://www.cdph.ca.gov/Programs/CID/DCDC/Pages/Guidance.aspx>

<https://schools.covid19.ca.gov/>

## CDPH Office of Communications

<https://www.cdph.ca.gov/Programs/OPA/Pages/News-Releases-2022.aspx>

<https://www.cdph.ca.gov/Programs/OPA/Pages/News-Releases-2021.aspx>

## Data models

<https://covid19.ca.gov/data-and-tools/>

## Cal/OSHA

<https://www.dir.ca.gov/dosh/>

<https://www.dir.ca.gov/dosh/COVID19citations.html>

<https://www.dir.ca.gov/oshab/oshab.html>

### ETS

The COVID-19 Prevention Emergency Temporary Standards remain in effect. The workplace standards were updated in May 2022. The revisions are in effect until December 31, 2022.

More information on the recent revisions to the COVID-19 Prevention Emergency Temporary Standards is available on

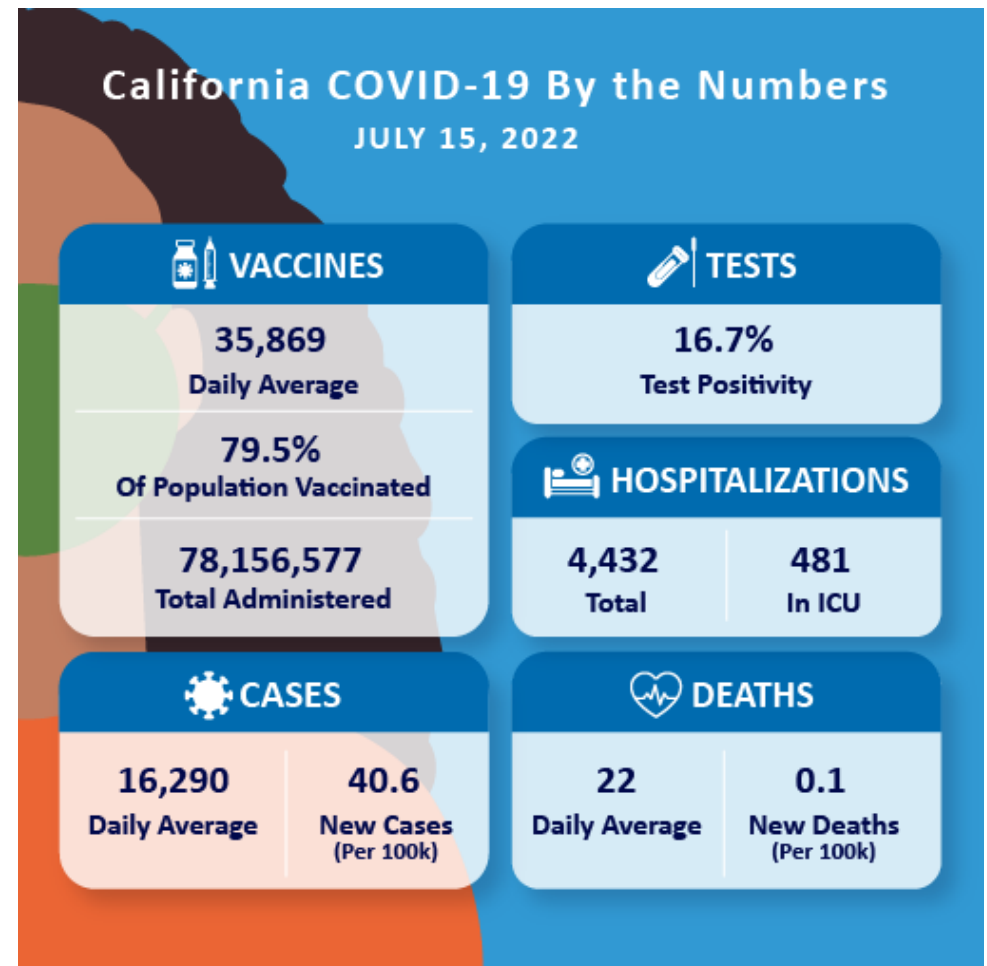
<https://www.dir.ca.gov/dosh/coronavirus/ETS.html>

[Cal/OSHA's Frequently Asked Questions.](#)

## Vaccines

<https://covid19.ca.gov/vaccines/>

<https://myturn.ca.gov/>





## Riverside County Data

<https://www.rivcoph.org/coronavirus>

**Confirmed**  
**656,534**

(+4,158)

**Hospitalized**  
**213**

Includes 12 in ICU

**Deaths**  
**6,566**

(+0)

**Recovered**  
**636,082**

(+2,813)

**CDC Data**

for Riverside County

[here](#)

**CDPH Data**

for Riverside County

[here](#)

**Community Data**

Zip Codes & Cities

[here](#)

Dashboard -Click [here](#) for more detailed city/community data and reports

## RIVERSIDE COUNTY DAILY COVID-19 REPORT

<https://www.rivcoph.org/Portals/0/Documents/CoronaVirus/Reports/DailyEpidemiologySummary.pdf?x=1658242804205>

# RIVERSIDE COUNTY COVID-19 CASES

Jul 13, 2022

**TOTAL CASES**  
**649,451**

**NEW REPORTED CASES**  
**856**

**TOTAL DEATHS**  
**6,560**

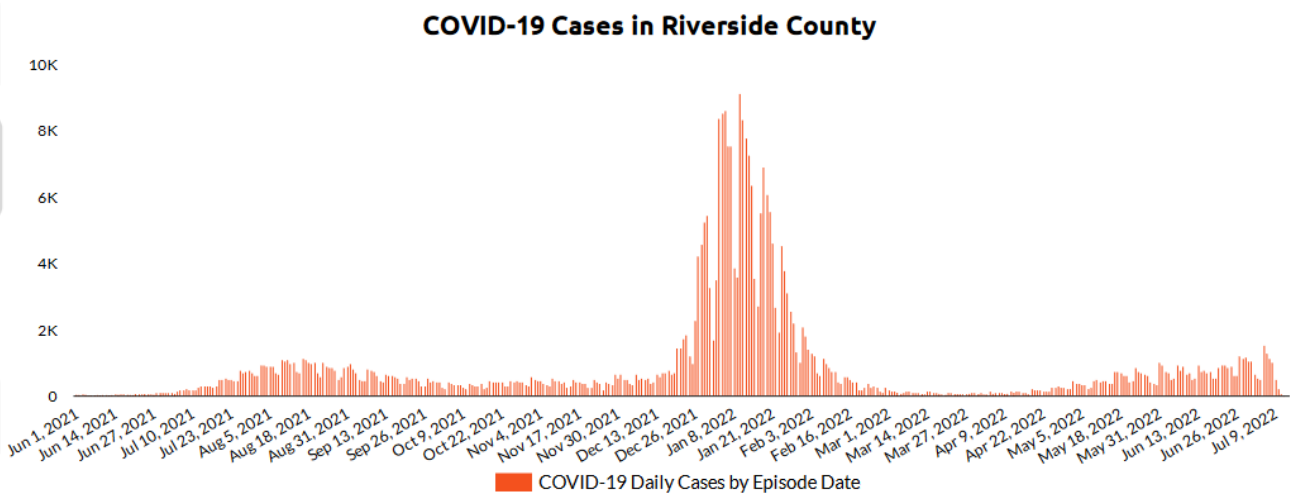
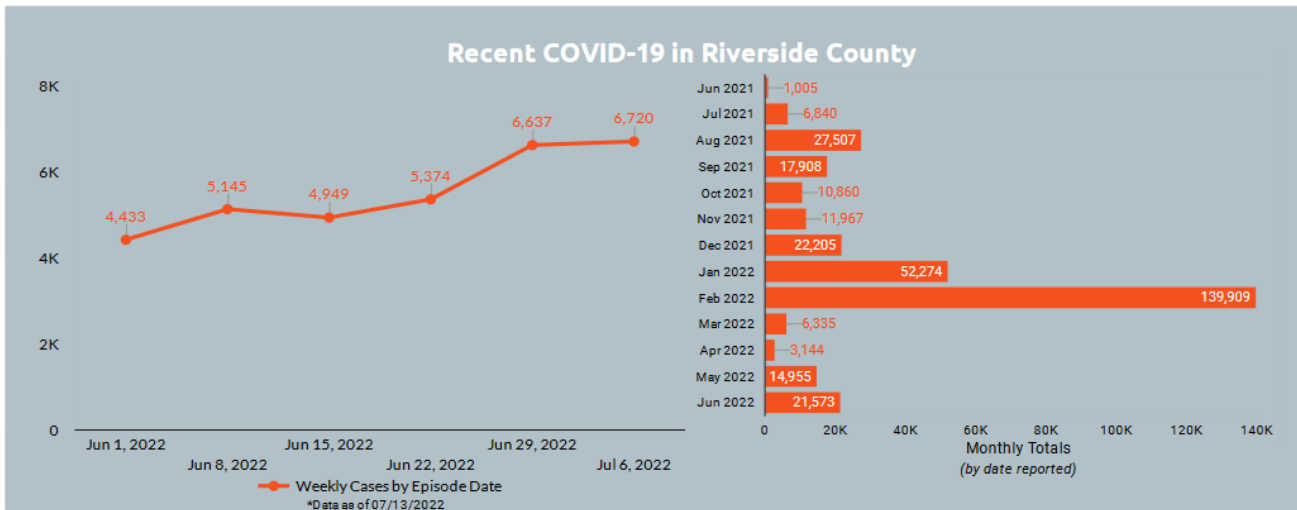
**NEW DEATHS**  
**0**

**TOTAL RECOVERED**  
**631,849**

**PROBABLE CASES\***  
**34,924**

**CURRENT HOSPITALIZED (includes ICU)**  
**236**

**CURRENT ICU**  
**13**



\*Probable cases refer to Antigen positive not PCR confirmed

# Weather

	Tue 7/19	Wed 7/20	Thu 7/21	Fri 7/22	Sat 7/23	Sun 7/24	Mon 7/25
<b>San Diego Marine</b> Out to 60 NM	High Surf Rip Currents	High Surf Rip Currents	Elevated Surf Rip Currents				
<b>Orange/San Diego Beaches</b> Including surf	High Surf Rip Currents	High Surf Rip Currents	Elevated Surf Rip Currents				
<b>San Diego Coast</b> San Diego, Oceanside							
<b>San Diego Valleys</b> Alpine, Escondido, Ramona							
<b>San Diego County Mtns</b> Mt Laguna, Julian, Palomar Mt						Thunderstorms	Thunderstorms
<b>San Diego Deserts</b> Anza Borrego, Ocotillo Wells	Heat	Heat	Heat	Heat	Heat	Thunderstorms	Thunderstorms
<b>Orange County Coast</b> Laguna Beach, Huntington Beach							
<b>Orange County Inland</b> Anaheim, Irvine							
<b>Santa Ana Mountains</b> Silverado, Santiago Peak							
<b>Inland Empire</b> Ontario, Riverside							
<b>Riverside County Mtns</b> Mt San Jacinto, Idyllwild						Thunderstorms	Thunderstorms
<b>Coachella Valley</b> Palm Springs, Indio	Heat	Heat	Heat	Heat	Heat	Thunderstorms	Thunderstorms
<b>San Bernardino Mtns</b> Wrightwood, Big Bear	Thunderstorms					Thunderstorms	Thunderstorms
<b>High Deserts</b> Victorville, Lucerne Valley	Heat	Heat	Heat	Heat	Heat	Thunderstorms	Thunderstorms

Risk Levels

Little to None

Minor

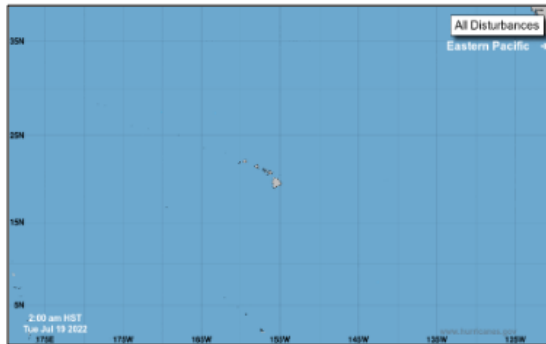
Moderate

Major

Extreme

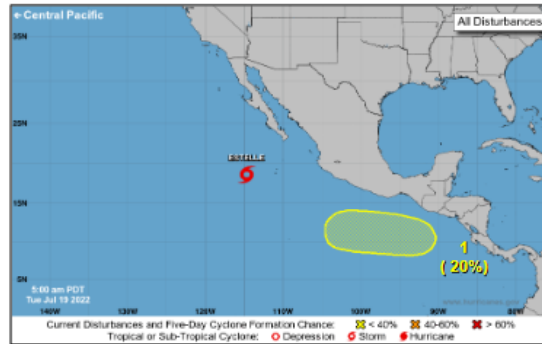
# Tropical Outlook – Five Day

## Central Pacific



- No new tropical cyclones expected during the next 5 days

## Eastern Pacific



**Tropical Storm Estelle:** (Advisory #16 as of 5:00 a.m. ET)

- 430 miles SW of the southern tip of Baja California, Mexico
- Moving W at 13 mph
- Maximum sustained winds 65 mph
- Forecast to degenerate into a post-tropical remnant low on Thursday
- Tropical-storm-force winds extend up to 115 miles

**Disturbance 1** (As of 8:00 a.m. ET)

- Expected to form later this week a few hundred miles offshore of Central America and southern Mexico
- Formation chance – 48-hours: Low (near 0%) 5 day: Low (20%)

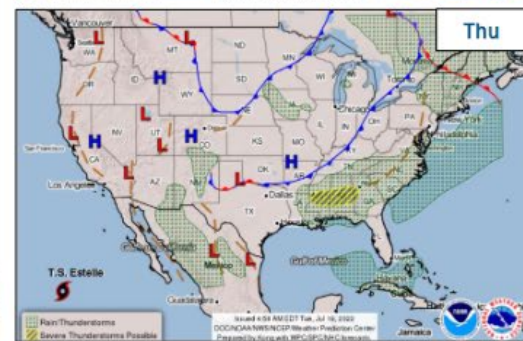
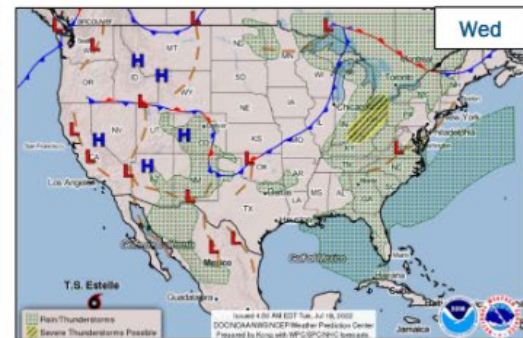
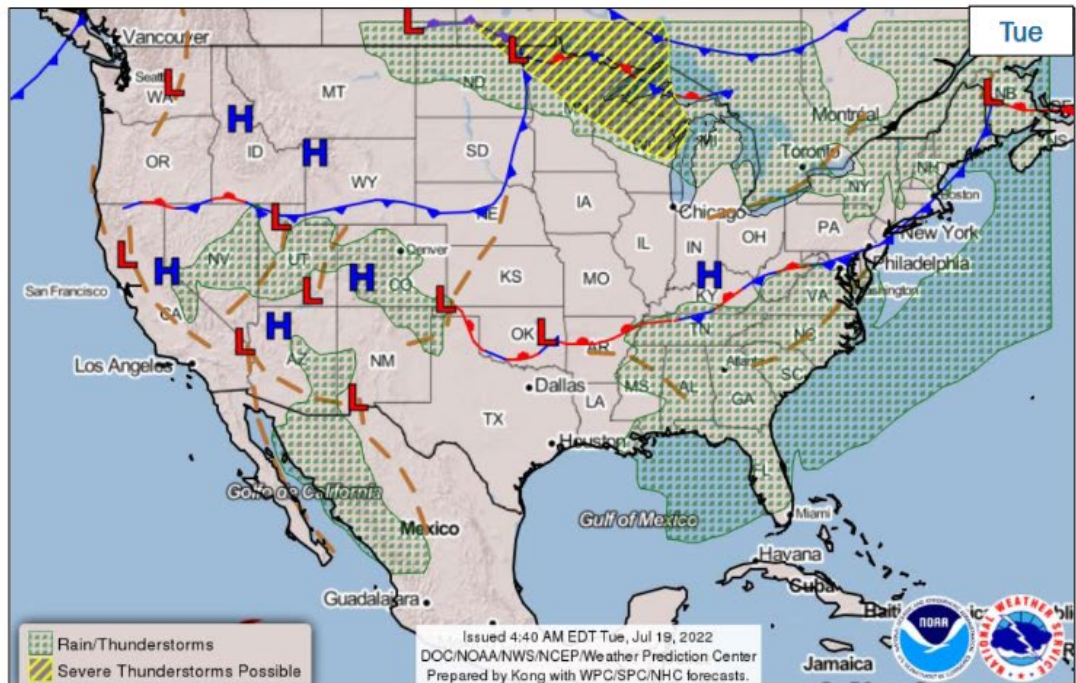
## Atlantic



- No new tropical cyclones expected during the next 5 days

National Watch Center

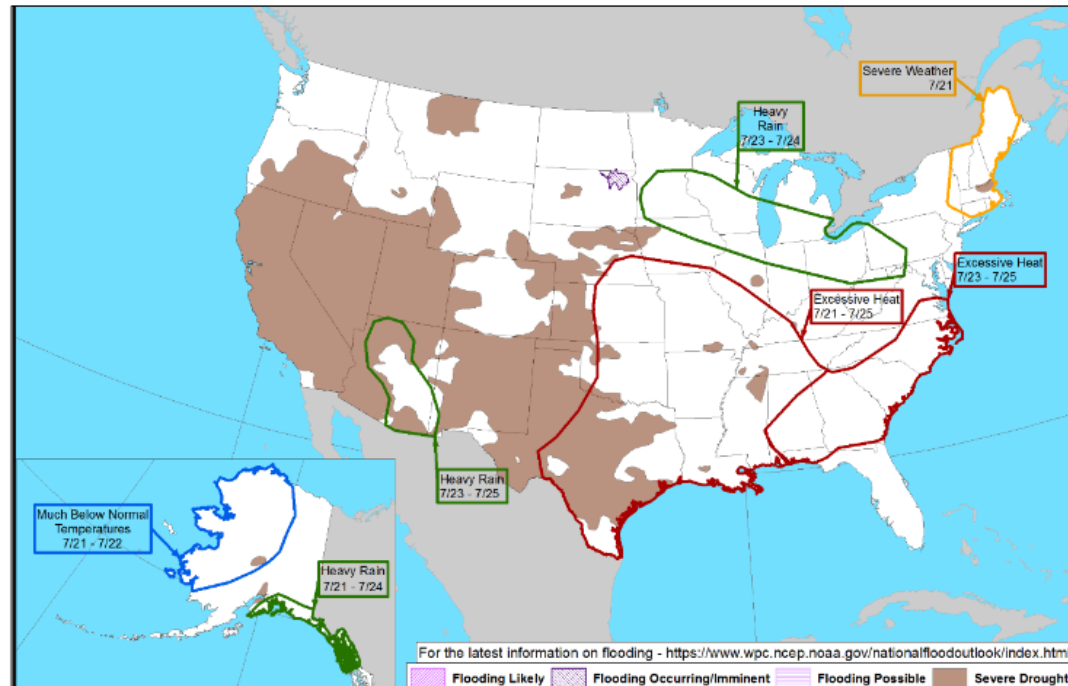
# National Weather Forecast



National Watch Center



# Hazards Outlook – Jul 21-25



National Watch Center