



# Situation Summary

## Friday, April 15, 2022 - Day 765 of the Pandemic

### Update as of 3:00 PM

**Extraordinary Assumptions:** There are many different data sources in this report and not all of them match. This document is informational purposes only, the goal is to provide an overall picture of the current situation.

### COVID-19 by the Numbers

4/15/2022	Riverside	Imperial	Kern	Los Angeles*	Orange	San Bernardino	San Diego	San Luis Obispo	Santa Barbara	Ventura	California	United States	Global
Total Cases	591,772	55,371	238,214	2,717,479	548,311	564,397	756,165	52,698	86,030	173,665	8,533,418	28,957,633	500,186,525
Total Cases Per Capita	23,976	28,892	25,690	26,492	16,983	25,453	22,435	18,898	18,851	20,365	21,265	8,671	6,317
% of Total Cases/Population	23.98%	28.89%	25.69%	26.49%	16.98%	25.45%	22.44%	18.90%	18.85%	20.37%	21.26%	8.67%	6.32%
Total Deaths	6,443	910	445	31,598	6,945	6,948	5,229	476	684	1,474	43,880	468,402	6,190,349
Deaths Per Capita	261.05	474.83	47.99	308.05	215.11	313.34	155.14	170.69	149.88	172.85	109.35	140.25	78.17
% of Total Deaths/Population	0.26%	0.47%	0.05%	0.31%	0.22%	0.31%	0.16%	0.17%	0.15%	0.17%	0.11%	0.14%	0.08%
% of State's Cases	6.93%	0.65%	2.79%	31.85%	6.43%	6.61%	8.86%	0.62%	1.01%	2.04%	29.47%	5.79%	
Total Hospital Beds	3,494	202	1,043	19,294	5,935	3,689	6,505	437	604	1,176	66,416		
Currently in Hospitals	54	3	19	228	67	42	105	2	4	11	1,000		
Hospital Beds Available**	3,440	199	1,024	19,066	5,868	3,647	6,400	435	600	1,165	65,416		
Total Hospital ICU Beds**	112	9	32	721	180	207	273	16	30	39	2,370		
Currently in ICU	8	1	8	66	13	8	21	0	0	1	155		
ICU Beds Available	104	8	24	655	167	199	252	16	30	38	2,215		
Case Fatality Rate	1.09%	1.64%	0.19%	1.16%	1.27%	1.23%	0.69%	0.90%	0.80%	0.85%	0.51%	1.62%	1.24%
Population***	2,468,145	191,649	927,251	10,257,557	3,228,519	2,217,398	3,370,418	278,862	456,373	852,747	40,129,160	333,976,981	7,918,710,000
% of State Population	6.15%	0.48%	2.31%	25.56%	8.05%	5.53%	8.40%	0.69%	1.14%	2.13%	12.02%	4.22%	

Sources: CDPH, WHO, CDC, Local County Data, LA Times

The date for which case statistics and hospital data were reported. Hospital COVID data are self-reported through a portal managed by the California Hospital Association and pulled at 2pm. COVID case statistics are reported by local health departments to CalREDIE and are pulled at 2pm. Hospital data and case statistics are integrated by the California Department of Technology and made available through the Open Data Portal the following morning. CA Open Data Portal is at least 24 Hours behind although a backlog of new case reports at the State level has ostensibly been cleared, some County dashboards still contain notes that indicate data are missing. (\*Many County sites do not report recovery rates or are only updating once a week)(\*\* based on calculation)(\*\*\*California Demographics from State Database Blueprint Data Chart 12-15-20 & census.gov)

**News**  
More detail on page 2

**US Data**  
More detail on page 4

**State Data**  
More detail on page 8

**County of Riverside**  
More detail on page 9

**News** – The collection of news articles are related to COVID-19. The inclusion or order of articles is not intended to reflect their importance, nor is it intended to endorse the political viewpoints or affiliations included in news coverage.

### **Shanghai residents clash with police over homes being used to isolate Covid patients**

- Residents at a housing complex in Shanghai clashed with health authorities on Thursday, after they tried to block a government-mandated requisition of buildings to house Covid-19 patients amid a coronavirus outbreak that has had the city on lockdown for weeks.
- The rare protest, footage of which was livestreamed and later widely circulated on social media before it was scrubbed by censors, comes amid mounting public frustration over the lockdown in Shanghai, China's financial center. The city of 26 million is at the center of China's worst outbreak since the start of the pandemic, in a major test of the country's "dynamic zero-Covid" strategy.

<https://www.nbcnews.com/news/world/shanghai-videos-residents-clash-police-china-covid-protest-rcna24520>

### **It's not over: COVID-19 cases are on the rise again in US**

- Yet again, the U.S. is trudging into what could be another COVID-19 surge, with cases rising nationally and in most states after a two-month decline.
- One big unknown? "We don't know how high that mountain's gonna grow," said Dr. Stuart Campbell Ray, an infectious disease expert at Johns Hopkins University.
- No one expects a peak nearly as high as the last one, when the contagious omicron version of the coronavirus ripped through the population.
- But experts warn that the coming wave – caused by a [mutant called BA.2](#) that's thought to be about 30% more contagious – will wash across the nation and push up hospitalizations in a growing number of states in the coming weeks. And the case wave will be bigger than it looks, they say, because reported numbers are [vast undercounts](#) as more people test at home without reporting their infections or skip testing altogether.

<https://apnews.com/article/covid-science-health-infectious-diseases-4b298e5339d399572e8f70bec118bde0>

### **FDA grants emergency authorization for first COVID-19 breathalyzer test**

- The FDA granted an emergency use authorization to a test produced by InspectIR Systems that collects a breath sample and analyzes for chemical compounds associated with the coronavirus, the first of its kind to be authorized for use.
- In a study of 2,409 people, the test correctly identified a positive COVID infection in 91.2% of cases and correctly identified negative samples 99.3% of the time, the FDA said in a release. A similar result was seen in a follow-up study focused on the contagious omicron variant of the coronavirus.
- According to InspectIR, the test is performed by exhaling into a tube in a similar manner to blowing up a balloon and produces results within three minutes

<https://www.usatoday.com/story/news/health/2022/04/14/covid-breathalyzer-test-fda-emergency-authorization/7325352001/>

### **Nasal antiviral blocks SARS-CoV-2 infection in mice**

- Antiviral drugs that target host cells may work against many existing and future variants of the virus that causes COVID-19.
- A compound delivered into the nose blocked a protein used by SARS-CoV-2 to get into cells and prevented severe infection in mice.

<https://www.nih.gov/news-events/nih-research-matters/nasal-antiviral-blocks-sars-cov-2-infection-mice>

## **Mandatory masking in schools reduced COVID-19 cases**

- Schools with mandatory masking during the Delta surge had less in-school transmission of SARS-CoV-2 than schools with optional or partial masking policies.
- The findings highlight how masking can help prevent the spread of COVID-19.  
<https://www.nih.gov/news-events/nih-research-matters/mandatory-masking-schools-reduced-covid-19-cases>

## **Philadelphia to restore indoor mask mandate as cases rise**

- Philadelphia became the first major U.S. city to reinstate its indoor mask mandate on Monday after reporting a sharp increase in coronavirus infections, with the city's top health official saying she wanted to forestall a potential new wave driven by an omicron subvariant.  
<https://www.yahoo.com/news/philadelphia-restore-indoor-mask-mandate-183058603.html>

## **California backs away from COVID vaccine mandates for kids**

- Although more than three-quarters of California adults are vaccinated against COVID-19, opinions are more divided when it comes to vaccinating children. That sentiment played out Thursday when first, the author of a bill that would have mandated vaccines for all children pulled the legislation, and then again when state health officials pushed back the date of their student vaccine mandate.
- Within the space of a few hours on Thursday, California's possible COVID-19 vaccine mandates for students were significantly scaled back and then postponed for at least a year — underscoring the political risk Gov. Gavin Newsom and state lawmakers might have taken on by ordering thousands of unvaccinated kids into distance learning in the middle of an election year
- The bill by Sen. Richard Pan, a Sacramento Democrat who chairs the Senate Health Committee, would have granted no personal belief exceptions to the requirement that all children get the COVID vaccine to attend school or child care. In sidelining his own bill, Pan said the focus needs to be on making sure families can access the vaccine for their children.
- Within hours, the California Department of Public Health announced it will not begin the process of adding the COVID-19 vaccine to the list of mandated childhood vaccines for K-12 public and private school students because it has not been approved by the federal Food and Drug Administration. [Previously the state had intended to require it for the upcoming 2022-23 school year](#), but now that won't happen until at least July 1, 2023.
- That move defaulted the state back to [Newsom's vaccine mandate](#), which is much looser than Pan's — among other things, it allows for personal belief exemptions and wouldn't require kids to get vaccinated until the semester after federal regulators fully approve the shot for their age group.
- But then the California Department of Public Health — part of Newsom's administration — [announced plans](#) to delay the governor's mandate until July 1, 2023, at the earliest “to ensure sufficient time for successful implementation of new vaccine requirements.”  
<https://calmatters.org/health/coronavirus/2022/04/kids-covid-vaccine-mandate-california/>

## **Californians No Longer Have to Quarantine After COVID Exposure**

- If you live in the state of California, you no longer need to quarantine if you were exposed to COVID-19 and have no symptoms, regardless of vaccination status.
- The state's health department is no longer recommending a five-day quarantine period for anyone exposed to COVID who's asymptomatic, except for in high-risk settings.
- However, they do still recommend you get tested three to five days after being exposed.  
<https://www.nbcbayarea.com/news/california/californians-no-longer-have-to-quarantine-after-covid-exposure/2864216/>

Updates as of April 6, 2022:

- Removed quarantine recommendations for asymptomatic exposed person (for the general public)
- Added recommendations for work exclusion or restriction in certain specified high-risk settings.
- Includes updated definition for close contact and infectious period.
- **Close Contact:**
  - Someone sharing the same indoor airspace, e.g., home, clinic waiting room, airplane etc., for a cumulative total of 15 minutes or more over a 24-hour period (for example, three individual 5-minute exposures for a total of 15 minutes) during an infected person's (laboratory-confirmed or a clinical diagnosis) infectious period.
  - Removed quarantine recommendations for asymptomatic exposed person (for the general public)



## U. S. Data

[https://covid.cdc.gov/covid-data-tracker/#cases\\_casesper100klast7days](https://covid.cdc.gov/covid-data-tracker/#cases_casesper100klast7days)

**United States**  
At a Glance

Cases Total  
Case Trends

80,341,159

Deaths Total  
Death Trends

984,744

Current Hosp.  
Admission Trends

9,398

82.1% of People 5+ with At Least  
One Vaccination



TOTAL CASES  
**80,341,159**  
+51,237 New Cases

7 DAY CASE RATE PER 100,000  
**66.2**

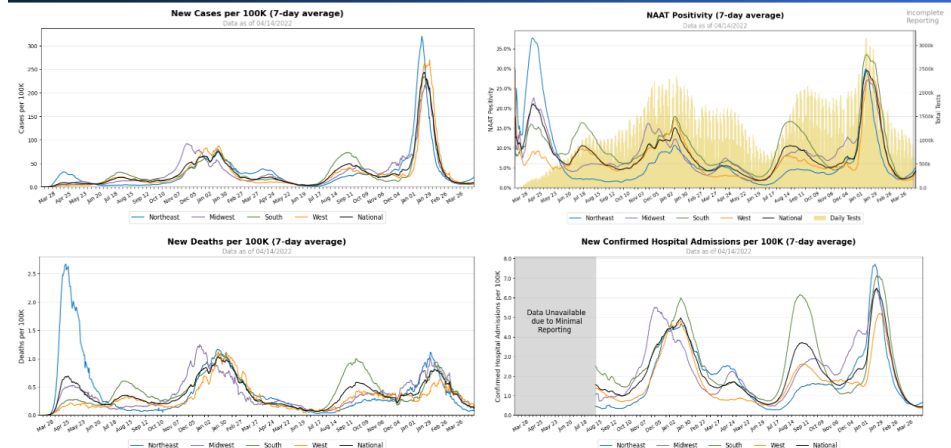
TOTAL DEATHS  
**984,744**  
+640 New Deaths

CDC | Data as of: Friday, April 15, 2022 1:48 PM ET. Posted: Friday, April 15, 2022 3:25 PM ET

## COVID-19 Community Profile Report 04-14-2022

<https://beta.healthdata.gov/Health/COVID-19-Community-Profile-Report/gqxm-d9w9>

### TIME SERIES BY CENSUS REGION



Source: CDC state-reported data (cases and deaths), Unified Testing Dataset, Unified Hospital Dataset.  
See <https://www.census.gov/foreignborn/reference.html#2010> for 2010 census regions and divisions of the United States.html for census regions.

# COVID-19 By the Numbers

<https://www.cdc.gov/coronavirus/2019-ncov/cdcresponse/by-the-numbers.html>

## COVID-19 RESPONSE BY THE NUMBERS As of April 11, 2022



Accessible: [www.cdc.gov/coronavirus/2019-ncov/cdcresponse/by-the-numbers.html](https://www.cdc.gov/coronavirus/2019-ncov/cdcresponse/by-the-numbers.html)

	<b>10,287</b>	CDC personnel supporting the outbreak response		<b>61.34+ million</b>	Times people have used CDC's online Coronavirus Self-Checker
	<b>1,923</b>	CDC deployers who have conducted <b>4,628</b> deployments to <b>367</b> cities across the United States and abroad		<b>1.7+ million</b>	Calls and emails to CDC-INFO
	<b>438</b>	COVID-19 studies published in CDC's Morbidity and Mortality Weekly Report (MMWR)		<b>4.0+ billion</b>	Times people have looked for information on CDC websites
	<b>10,675</b>	Documents providing information and guidance for government agencies, businesses, and the public		<b>5.0+ billion</b>	Social media impressions on <b>21,090</b> CDC response-related posts
	<b>855+ million</b>	COVID-19 tests conducted by public and private laboratories in the United States		<b>103,264+</b>	Inquiries from doctors, nurses, or other clinical staff and health departments received by CDC
	<b>256+ million</b>	People who have received at least one dose of a COVID-19 vaccine		<b>218+ million</b>	People who have been fully vaccinated with a COVID-19 vaccine

[cdc.gov/coronavirus](https://www.cdc.gov/coronavirus)

CS316565-A

## CDC What's New & Updated

<https://www.cdc.gov/coronavirus/2019-ncov/whats-new-all.html>

- 4/15/22 [Cases in the U.S.](#)
- 4/15/22 [Overall US COVID-19 Vaccine Distribution and Administration Update as of Fri, 15 Apr 2022 06:00:00 EST](#)
- 4/14/22 [COVID-19 Vaccine Booster Shot](#)
- 4/14/22 [Staffing Resources](#)
- 4/14/22 [Frequently Asked Questions about COVID-19 Vaccination](#)
- 4/14/22 [Recommendations for Tribal Ceremonies and Gatherings During the COVID-19 Outbreak](#)
- 4/14/22 [COVID Data Tracker Weekly Review](#)
- 4/14/22 [Effectiveness of COVID-19 mRNA Vaccination in Preventing COVID-19–Associated Hospitalization Among Adults with Previous SARS-CoV-2 Infection — United States, June 2021–February 2022](#)
- 4/14/22 [COVID-19 Mortality and Vaccine Coverage — Hong Kong Special Administrative Region, China, January 6, 2022–March 21, 2022](#)
- 4/14/22 [COVID Data Tracker Recent Updates - 2022-04-14 - The Wastewater Surveillance tab now shows a trendline for the normalized concentration of SARS-CoV-2 in wastewater at each wastewater sampling point and a new map metric is available that shows the current relative level of SARS-Cov-2 in wastewater at each site.](#)
- 4/14/22 [COVID Data Tracker Recent Updates - 2022-04-14 - U.S. territories were added to the COVID-19 Community Levels map on the County View tab.](#)
- 4/13/22 [Frequently Asked Questions about COVID-19 Vaccination in Children](#)
- 4/13/22 [Non-U.S. citizen, Non-U.S. immigrants: Air Travel to the United States](#)
- 4/13/22 [Requirement for Proof of COVID-19 Vaccination for Air Passengers](#)
- 4/13/22 [COVID-19 Vaccines for People Who Would Like to Have a Baby](#)
- 4/13/22 [Health Equity](#)
- 4/12/22 [Vaccinating Children with Disabilities Against COVID-19](#)
- 4/12/22 [COVID-19 Forecasts: Deaths](#)
- 4/12/22 [Previous COVID-19 Forecasts: Hospitalizations](#)
- 4/11/22 [COVID-19 Vaccines for Moderately to Severely Immunocompromised People](#)
- 4/11/22 [v-safe COVID-19 Vaccine Pregnancy Registry](#)
- 4/11/22 [Selected Adverse Events Reported after COVID-19 Vaccination](#)
- 4/11/22 [COVID-19 Travel Recommendations by Country](#)
- 4/10/22 [6 Things to Know about COVID-19 Vaccination for Children](#)
- 4/10/22 [Community, Work, and School](#)

## CDC Guidance

<https://www.cdc.gov/coronavirus/2019-ncov/communication/guidance-list.html?Sort=Date%3A%3Adesc>

### [Interim Guidance for SARS-CoV-2 Testing in Homeless Shelters and Encampments](#)

Find guidance and considerations for SARS-CoV-2 testing in homeless encampments and homeless shelters, including the types of tests to consider. Date: 4/5/22

### [Testing Strategies for SARS-CoV-2](#)

Explore SARS-CoV-2 testing strategies, including their intended use and applications, regulatory requirements, and reporting requirements. Date: 4/3/22

### [Guidance for Antigen Testing for SARS-CoV-2 for Healthcare Providers Testing Individuals in the Community](#)

Find detailed information about COVID-19 antigen diagnostic testing, including antigen test performance, evaluating results, and a summary table. Date: 4/3/22

### [Collection and Submission of Postmortem Specimens from Deceased Persons with Confirmed or Suspected COVID-19](#)

Learn about CDC's guidance on collection and submission of postmortem specimens from deceased persons under investigation for COVID-19. Date: 4/3/22

## Science and Research

<https://www.cdc.gov/coronavirus/2019-ncov/science/science-and-research.html>

### Journals and Studies



[Morbidity and Mortality Weekly Report](#)  
[Results from COVID-19 outbreak investigations](#)



[Preventing Chronic Disease](#)  
[Articles on COVID-19 and chronic disease](#)



[Emerging Infectious Diseases](#)  
[Studies of COVID-19 since the beginning of the pandemic](#)



## State Data

<https://covid19.ca.gov/>

The SMARTER Plan is the next phase of California's COVID-19 response

<https://covid19.ca.gov/smarter/>

## Tracking COVID-19

<https://update.covid19.ca.gov/#top>

<https://www.cdph.ca.gov/Programs/CID/DCDC/Pages/Immunization/ncov2019.aspx#>

<https://www.cdph.ca.gov/Programs/CID/DCDC/Pages/COVID-19/CovidDataAndTools.aspx>

## California Healthy Places Index

<https://covid19.healthyplacesindex.org/>

<https://map.healthyplacesindex.org/>

## CDPH Statewide Guidance

<https://www.cdph.ca.gov/Programs/CID/DCDC/Pages/Guidance.aspx>

<https://schools.covid19.ca.gov/>

## CDPH Office of Communications

<https://www.cdph.ca.gov/Programs/OPA/Pages/News-Releases-2022.aspx>

<https://www.cdph.ca.gov/Programs/OPA/Pages/News-Releases-2021.aspx>

## Data models

<https://covid19.ca.gov/data-and-tools/>

## Cal/OSHA

<https://www.dir.ca.gov/dosh/>

<https://www.dir.ca.gov/dosh/COVID19citations.html>

<https://www.dir.ca.gov/oshab/oshab.html>

## Vaccines

<https://covid19.ca.gov/vaccines/>

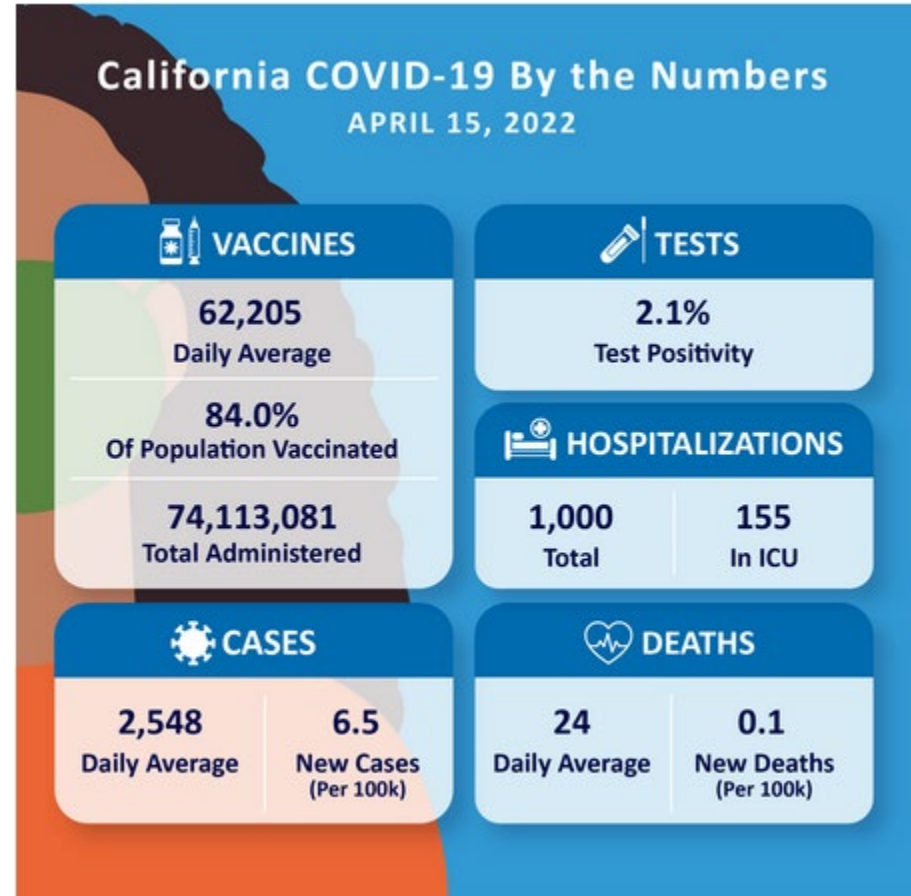
<https://myturn.ca.gov/>



Office of Governor  
**GAVIN NEWSOM**

Press Releases, Executive Orders,  
Media Advisories, and Proclamations.

<https://www.gov.ca.gov/newsroom/>







# Riverside County Data

<https://www.rivcoph.org/coronavirus>

Starting the week of April 4, 2022, COVID-19 Data will be updated on **Tuesdays** and **Fridays** to remain consistent with California Department of Public Health reporting procedures.

<p><b>Confirmed</b> <b>599,000</b> (+305)</p>	<p>Currently Hospitalized 54 Includes 8 in ICU</p>	<p><b>Deaths</b> <b>6,497</b> (+8)</p>	<p><b>Recovered</b> <b>590,993</b> (+551)</p>	<p>Zip Code &amp; Community Data <a href="#">here</a></p>
<p>Daily Case Rate / 100k <b>3.8</b> (7-Day Avg &amp; 7-Day Lag)</p>		<p>Positivity <b>2.2%</b> (7-Day Avg &amp; 7-Day Lag)</p>		<p>Daily Test Rate / 100k <b>212.4</b> (7-Day Avg &amp; 7-Day Lag)</p>

Dashboard -Click [here](#) for more detailed city/community data and reports

## RIVERSIDE COUNTY DAILY COVID-19 REPORT

<https://www.rivcoph.org/Portals/0/Documents/CoronaVirus/Reports/DailyEpidemiologySummary.pdf?x=1650061260249>

