



Situation Summary

Friday, March 25, 2022 - [Day 744](#) of the Pandemic

Update as of 1:30 PM

Extraordinary Assumptions: There are many different data sources in this report and not all of them match. This document is informational purposes only, the goal is to provide an overall picture of the current situation.

COVID-19 by the Numbers

03/25/2022	Riverside	Imperial	Kern	Los Angeles*	Orange	San Bernardino	San Diego	San Luis Obispo	Santa Barbara	Ventura	California	United States	Global
Total Cases	589,947	55,211	191,241	2,697,227	545,158	560,550	749,871	52,344	85,464	172,647	8,468,439	79,696,994	474,659,674
Total Cases Per Capita	23,902	28,808	20,625	26,295	16,886	25,280	22,249	18,771	18,727	20,246	21,103	23,863	5,994
% of Total Cases/Population	23.90%	28.81%	20.62%	26.30%	16.89%	25.28%	22.25%	18.77%	18.73%	20.25%	21.10%	23.86%	5.99%
Recovered*	583,855	51,383	236,104	Not Reported	535,358	557,015	Not Reported	52,346	84,498	170,475	8,609,192	63,824,331	413,351,866
% of total recovered/population	23.66%	26.81%	25.46%	Not Reported	16.58%	25.12%	Not Reported	18.77%	18.52%	19.99%	21.45%	19.11%	5.22%
Total Deaths	6,388	909	442	31,267	6,852	6,828	5,143	469	673	1,455	43,217	972,550	6,103,355
Deaths Per Capita	258.82	474.30	47.67	304.82	212.23	307.93	152.59	168.18	147.47	170.63	107.69	291.20	77.08
% of Total Deaths/Population	0.26%	0.47%	0.05%	0.30%	0.21%	0.31%	0.15%	0.17%	0.15%	0.17%	0.11%	0.29%	0.08%
% of State's Cases	6.97%	0.65%	2.26%	31.85%	6.44%	6.62%	8.85%	0.62%	1.01%	2.04%	10.63%	16.79%	
Total Hospital Beds	3,479	202	1,060	19,420	6,028	3,666	6,521	454	604	1,186	66,958		
Currently in Hospitals	75	7	34	350	129	82	162	5	19	22	1,648		
Hospital Beds Available**	3,404	195	1,026	19,070	5,899	3,584	6,359	449	585	1,164	65,310		
Total Hospital ICU Beds**	115	4	35	734	209	186	290	18	30	41	2,400		
Currently in ICU	12	3	7	94	24	25	39	1	2	3	290		
ICU Beds Available	103	1	28	640	185	161	251	17	28	38	2,110		
Case Fatality Rate	1.08%	1.65%	0.23%	1.16%	1.26%	1.22%	0.69%	0.90%	0.79%	0.84%	0.51%	1.22%	1.29%
Population***	2,468,145	191,649	927,251	10,257,557	3,228,519	2,217,398	3,370,418	278,862	456,373	852,747	40,129,160	333,976,981	7,918,710,000
% of State Population	6.15%	0.48%	2.31%	25.56%	8.05%	5.53%	8.40%	0.69%	1.14%	2.13%	12.02%	4.22%	

Sources: CDPH, WHO, CDC, Local County Data, LA Times

The date for which case statistics and hospital data were reported. Hospital COVID data are self-reported through a portal managed by the California Hospital Association and pulled at 2pm. COVID case statistics are reported by local health departments to CalREDIE and are pulled at 2pm. Hospital data and case statistics are integrated by the California Department of Technology and made available through the Open Data Portal the following morning. CA Open Data Portal is at least 24 Hours behind although a backlog of new case reports at the State level has ostensibly been cleared, some County dashboards still contain notes that indicate data are missing. (*Many County sites do not report recovery rates or are only updating once a week)(** based on calculation)(***California Demographics from State Database Blueprint Data Chart 12-15-20 & census.gov)

News
More detail on page 2

US Data
More detail on page 7

State Data
More detail on page 16

County of Riverside
More detail on page 17

RCCD Dashboard
More detail on page 19

Weather
More detail on page 20

Air Quality
More detail on page 24

Prepared by Justin Czerniak
justin.czerniak@norccollege.edu

Daily Situation Reports Archive
<https://www.norccollege.edu/sep/Pages/reports.aspx>

News – The collection of news articles are related to COVID-19. The inclusion or order of articles is not intended to reflect their importance, nor is it intended to endorse the political viewpoints or affiliations included in news coverage.

China doesn't have a Covid exit plan. Two years in, people are fed up and angry

- For two years, people in China have largely tolerated living under some of the world's most stringent Covid-19 controls.
- Restricted borders, constant digital tracking, and the potential for mass testing and snap lockdowns whenever a handful of cases appeared were all trade-offs for a comparatively Covid-free life while the pandemic raged overseas.
- But China's inability to bring its latest outbreak under control so far has prompted online rumblings from frustrated citizens, as questions about Beijing's zero-Covid strategy break into the mainstream for the first time.
- In the tech hub of Shenzhen on Sunday, videos shared online showed residents protesting in a locked-down district, after restrictions lasted for several days longer than scheduled, according to social media posts.
- "You can't do this – we need to eat and pay the rent," a man among a crowd of protesters is heard yelling in anguish at health care workers, who stood behind high plastic barriers, according to a video shared online.
- In another instance, in the neighboring city of Guangzhou earlier this month, thousands of people were seen in video footage trying to escape being caught up in a snap lockdown at a trade fair. Some hopped fences to avoid being locked inside the venue after a single positive case was found.
- Such scenes are largely unprecedented in China's more than two-year fight against the virus. And while many remain supportive of keeping Covid-19 at bay, these instances are not the only signs of changing attitudes, as millions remain under lockdown and cases continue to climb in China's worst outbreak since early 2020.
- As for those wondering when the zero-Covid strategy will end, China's health officials have been ambiguous. When asked at a news conference on Tuesday, government epidemiologist Liang Wannian said China must "not waver" and stick to its plan, while waiting for a range of things to happen: outbreaks to ease overseas, the virus to mutate to become less dangerous, and better treatments and vaccines to become available.
- "Under these circumstances, I believe we will thoroughly evaluate the situation of the epidemic in China....and then take more adaptive measures to counter the disease," he said.
- But for those in China who are counting the days until they can be released from lockdown, such answers may not be reassuring.
- As one social media user, who expressed concern that a lockdown in his Shanghai complex could be continually extended, wrote on Weibo this week: "Have the people in charge really not studied this issue carefully? The price paid by people inside is endless."
<https://www.cnn.com/2022/03/25/china/china-covid-frustration-exit-plan-intl-hnk-mic/index.html>

Almost 2 in 5 Covid-19 researchers have faced harassment, survey finds

- According to a new survey published Thursday in the journal Science, nearly 2 in 5 Covid-19 researchers reported they had been harassed since the pandemic began.
- The survey, which has not gone through a peer review process, found that 38 percent of those researchers had experienced harassment of some kind. Before the pandemic, 71 percent of respondents said they received less harassment or no abuse at all.
- Researchers reported personal insults and attacks on their professional capabilities as the most common types of harassment. Other types of abuse — such as threats of harm, physical intimidation and doxxing — were reported more rarely. Eighteen scientists — about 3.5 percent of those surveyed — said they received death threats.
<https://www.nbcnews.com/science/science-news/almost-2-5-covid-19-researchers-faced-harassment-rcna21060>

Africa's COVID immunity is a medical mystery as mortality rates fall below early pandemic projections

- Despite pessimistic projections that the coronavirus would cripple the African continent, it seems that wealthier and more well-equipped countries have higher death tolls and that the effect of COVID in Africa was comparatively minimal.
- In France specifically, 140,600 people have died from COVID. As of 2018 there were 6.5 doctors per 10,000 people in France, according to The World Bank. And even with over four times as many health professionals as an African country like Sierra Leone—there are 1.4 doctors, nurses and midwives per 10,000 people in the country as of 2019—over 99% more people died from the coronavirus in France than Sierra Leone.
- In Kamakwie, Sierra Leone in particular, the district's COVID response center has registered a mere 11 cases since the beginning of the pandemic and no deaths, and it's not just Sierra Leone. Some countries in Africa are reporting coronavirus-related deaths that don't even reach the four-figure mark, like Tanzania which has reported 800 COVID-related deaths since the start of the pandemic, and Togo which has reported 272 total coronavirus-related deaths. And one thing is for certain, the low COVID mortality rates in various African countries are not owed to incredibly widespread vaccine access. Vaccine inequity is an ongoing issue in many African countries like Uganda, Zambia, and more.
- Dr. Andy Pekosz, a SARS-CoV-2 expert and the Vice Chair of the Molecular Microbiology & Immunology Department at Johns Hopkins University told *Fortune*. "I think it's quite clear that SARS-CoV-2 has been introduced into African countries on numerous occasions but in some cases, it's not lead to outbreaks that are anywhere close to the scale we have seen elsewhere, including places like South America that lie on the same longitudinal lines as parts of Africa."
- Pekosz believes that Lassa Fever and Ebola have not caused enough cases to generate immunity from COVID and therefore can't be correlated to low case numbers in Africa. He believes that malaria has wide enough distribution to explain immunity, but has not been able to find a strong link to malaria and reduced COVID cases.
- "Furthermore, some studies of antibody levels in African countries haven't shown a strong signal of preexisting antibodies to SARS-CoV-2," Pekosz told *Fortune*. "It may be that parts of the immune response not related to antibodies could be contributing—perhaps cellular immune responses like T cell responses."

<https://fortune.com/2022/03/23/africa-covid-immunity-medical-mystery-mortality-rates-europe/>

New Study: Chemical found in vegetables could slow COVID

- Scientists at Johns Hopkins University have found evidence showing that leafy greens such as broccoli could provide protection from COVID-19 and other common colds.
- Sulforaphane: Studies show that "sulforaphane, a plant-derived chemical, known as a phytochemical, already found to have anti-cancer effects, can inhibit the replication of SARS-CoV-2." This COVID-19 fighting chemical, sulforaphane, is abundant in cabbage, kale, Brussels sprouts and broccoli, according to Johns Hopkins.
- What did the study reveal? During the study, scientists exposed cells to sulforaphane two hours before infecting some of the cells with COVID-19 and the others with the common cold virus.
- Results showed that exposure to sulforaphane reduced COVID-19 replication by 50%, including the delta and omicron variants, Johns Hopkins reported.
- Should I go buy sulforaphane? Although the results are promising, "researchers caution the public against rushing to buy sulforaphane supplements available online and in stores, noting that studies of sulforaphane in humans are necessary before the chemical is proven," according to Medical Xpress.

<https://www.deseret.com/coronavirus/2022/3/25/22995359/new-chemical-found-vegetables-fight-covid-19>

On World Tuberculosis Day, the worst death rate in 10 years

- March 24 is World Tuberculosis Day. “WHO has reported an increase in TB deaths for the first time in more than a decade,” Director-General Tedros Adhanom Ghebreyesus said Thursday. The organization’s October 2021 [Global Tuberculosis Report](#) found that global tuberculosis deaths increased from 1.2 million in 2019 to 1.3 million in 2020. This is the first time these deaths have risen since 2005, bringing death rates back to the level last seen in 2017.
<https://www.cnn.com/2022/03/24/health/tuberculosis-pandemic/index.html>

Russian Attacks on Health Care Follow 'Disturbingly Common' Trend, WHO Says

- There have been 64 attacks on Ukrainian health care facilities since the beginning of Russia's invasion of Ukraine last month, the World Health Organization said Thursday.
- The organization said Ukraine has seen two to three attacks on health care per day since the invasion started in late February and that it "condemns these attacks in the strongest possible terms."
- Russia has been accused of targeting Ukrainian hospitals, including a maternity and children's hospital in Mariupol, that was bombed this month. After the bombing, which injured at least 17 people, U.S. Vice President Kamala Harris said the attack should be investigated as a potential war crime.
- In addition, the organization said that COVID-19 vaccination and "routine immunization" has drastically slowed in the country. While before the invasion 50,000 people were receiving COVID-19 shots each day, the organization said that only 175,000 people were vaccinated against the virus between February 24 and March 15.
<https://www.newsweek.com/russian-attacks-health-care-follow-disturbingly-common-trend-who-says-1691603>

CDC updates Covid-19 guidance to allow patients wear N95s

- On Thursday the CDC updated its guidance so that people visiting health care facilities are allowed to wear highly protective masks such as N95s.
- The change comes after a POLITICO report last week found that hospitals around the country routinely ask patients and visitors to remove their N95s and replace them with less protective surgical instead of their own N95.
- The nation’s [public health agency now says on its website](#) that people should “use the most protective form” of masks. While facilities can continue to offer patients surgical masks, facilities “should allow the use of a clean mask or respirator with higher level protection by people who chose that option based on their individual preference.”
<https://www.politico.com/news/2022/03/24/cdc-updates-covid-19-guidance-to-allow-patients-wear-n95s-00020342>
POLITICO report: <https://www.politico.com/news/2022/03/19/u-s-health-officials-covid-19-hospital-safety-complaints-politico-report-00018695>

US tuberculosis rates went up more than 9% in 2021 after plummeting early in pandemic, study shows

- Tuberculosis cases in the United States rose 9.4% in the past year after falling almost 20% in 2020, though the latest rates are still significantly lower than before the pandemic, according to a new study.
- The study, published Thursday in the US Centers for Disease Control and Prevention’s Morbidity and Mortality Weekly Report, analyzed CDC data to quantify and characterize trends in tuberculosis cases.
- According to the report, cases increased from 7,173 to 7,860 in 2021. This follows a 19.9% drop in cases between 2019 and 2020. However, 2021 cases are still 12.6% lower than they were in 2019.
- Before the pandemic, case rates dropped an average of 1% to 2% yearly.
<https://www.cnn.com/2022/03/24/health/tuberculosis-pandemic/index.html>

NYC Mayor Adams' vaccine exception for pro athletes, entertainers faces backlash

- There is fierce backlash after New York City Mayor Eric Adams lifted the vaccine mandate for professional athletes and performers but not city workers.
- The policy change means unvaccinated players for the Mets and Yankees, as well as Nets star Kyrie Irving can now compete in the city.
- But unions representing other workers, including police officers, firefighters and teachers, are accusing the mayor of a double standard. And in some cases they are threatening legal action.
- Adams says he made the decision to help the economy. "By putting our home teams on equal playing field, we increase their chances of winning and then has a real impact on our city. This is just not fans in the stands but it is people in the stores."
- The mayor is now under fire from virtually every major municipal union.

<https://abc7ny.com/nyc-vaccine-mandate-eric-adams-citi-field-mets/11679579/>

Related: Unvaccinated New York State Judge Could Be Removed

<https://www.nytimes.com/live/2022/03/22/world/covid-19-mandates-cases-vaccine>

Los Angeles BA.2 Covid Cases Jump 130% In One Week As More Transmissible Omicron Variant Spreads Across U.S.

- Los Angeles County Public Health officials announced today that the county of 10 million people had finally begun to experience a trend that has already hit many parts of the United States: a rapid rise in the number of Covid cases attributed to the more transmissible Omicron BA.2 variant.
- Although the current sequencing sample represents a small fraction of all cases, it indicates that between February 27- March 5, 14.7% of sequenced cases were the BA.2 Omicron sub-lineage in LA County. This is an increase from 6.4% of sequenced cases in the prior week.
- Just last week, the county's director of Public Health, Barbara Ferrer, described the increases in BA.2 as "a gradual growth." Things seem to have changed. The ascent from 6.4% of sequenced cases to 14.7% means an overall 129.68% increase in the variant. By almost any measure, that is not gradual growth.

<https://deadline.com/2022/03/ba-2-omicron-cases-los-angeles-1234986553/>

California legislative leaders move to extend COVID rent relief, eviction protections

- A week before California's eviction moratorium was scheduled to expire, top Democrats in the Legislature announced a proposal on Thursday to extend COVID-19 pandemic protections for tenants by another three months so the state can finish sending out rent relief payments.
- [Assembly Bill 2179](#) would move the date on which landlords may initiate eviction proceedings from April 1 to July 1, as long as an application is submitted by March 31 to a rent relief program. Democratic legislative leaders said the extension would give applicants more time to receive the help and avoid losing their homes.

<https://www.latimes.com/california/story/2022-03-24/california-legislative-leaders-move-to-extend-covid-rent-relief-eviction-protections>

These California Counties Saw the Biggest Population Decline During the COVID-19 Pandemic

- It's a story all too familiar for Californians – friends, family, neighbors and even tech companies leaving the Golden State in search of cheaper rent and improved quality of life. [New U.S. Census data released Thursday](#) shows several [California](#) counties topping the list of regions that saw the biggest drop in population during the height of the COVID-19 pandemic.
- Here are 10 counties that topped the list, based on numerical declines:
 - Los Angeles County, California — Decline of 184,465 residents
 - New York County, New York — Decline of 117,375 residents
 - Cook County, Illinois — Decline of 102,395 residents
 - Kings County, New York — Decline of 95,022 residents
 - Queens County, New York — Decline of 74,321 residents
 - San Francisco County, California — Decline of 58,764 residents
 - Santa Clara County, California — Decline of 50,751 residents
 - Bronx County, New York — Decline of 47,706 residents
 - Alameda County, California — Decline of 33,797 residents
 - Miami-Dade County, Florida — Decline of 38,990 residents
- The data shows a different perspective when you compare percentages. New York County and San Francisco County lost 6.9% and 6.7% of their population during the same time period.
- As for the U.S. region that saw the biggest population growth from 2020 to 2021 -- that recognition, unsurprisingly, goes to the Dallas-Fort Worth-Arlington region of Texas, which saw a spike of more than 97,000 residents.

<https://www.nbclosangeles.com/news/california-news/california-population-census-covid-19/2855503/>

Data: <https://www.census.gov/newsroom/press-releases/2022/population-estimates-counties-decrease.html>

'An enormous disabling event': Long COVID could have inequitable impact on Californians

- Studies have estimated that more than [one in four COVID-19 patients](#) experience symptoms that last for months, known as "long haulers." In California, that could mean as many as 2 million people among the 8.5 million COVID-19 cases may have long COVID, including more than 100,000 African Americans and one million Latinos.
- [Long COVID](#) is a mysterious, debilitating and difficult-to-diagnose compilation of post-infection problems that have affected perhaps millions of Californians. And health experts fear that the toll will be especially harsh for Latinos, African Americans and low-income residents, who already [face a disproportionate impact from COVID-19](#) as well as less access to quality health care.
- [At least 20 specialized, post-COVID programs](#) have been set up at medical centers in California to help treat these long-haul patients. But they already are overburdened, and experts fear that long COVID could go largely unaddressed or misdiagnosed in people who have few resources.
- Long COVID patients often need a team of specialists because cardiac, respiratory and neurological problems have been documented. As a result, people with Medi-Cal or no health insurance may struggle to find proper care and pay for expensive tests.
- The general experience (of patients) is that they've been seen by numerous providers in the community. They feel frustrated," said [Dr. Jeffrey Hsu](#), a cardiologist who is on a team of physicians treating patients at [UCLA Health's long COVID program](#). "They're told it's anxiety or to be patient, that symptoms will get better on their own."

<https://www.dailynews.com/2022/03/25/an-enormous-disabling-event-long-covid-could-have-inequitable-impact-on-californians/>



U. S. Data

https://covid.cdc.gov/covid-data-tracker/#cases_casesper100klast7days

United States

At a Glance

Cases Total **79,696,994**

Case Trends



Deaths Total **972,550**

Death Trends



Current Hosp. **13,719**

Admission Trends



81.7% of People 5+ with At Least

One Vaccination



TOTAL CASES
79,696,994

+37,737 New Cases

7 DAY CASE RATE PER 100,000
57.2

TOTAL DEATHS
972,550

+1,268 New Deaths

CDC | Data as of: Thursday, March 24, 2022 8:15 PM ET. Posted: Thursday, March 24, 2022 10:00 PM ET

Find Free Masks (N95 Respirators)

<https://www.cdc.gov/coronavirus/2019-ncov/your-health/free-masks.html>

Find Free Masks (N95 Respirators)

Updated Mar. 16, 2022 Languages Print

This tool shows a list of pharmacies that provide free masks (N95 respirators). It **does not show their current inventory**. Please check with the location for availability.

Need help finding free masks in the U.S.? Call 1-800-232-0233 (TTY 1-888-720-7489)

Find Free Masks

Powered by VaccineFinder

5-digit Zip Code

Zip Code

Search for Free Masks

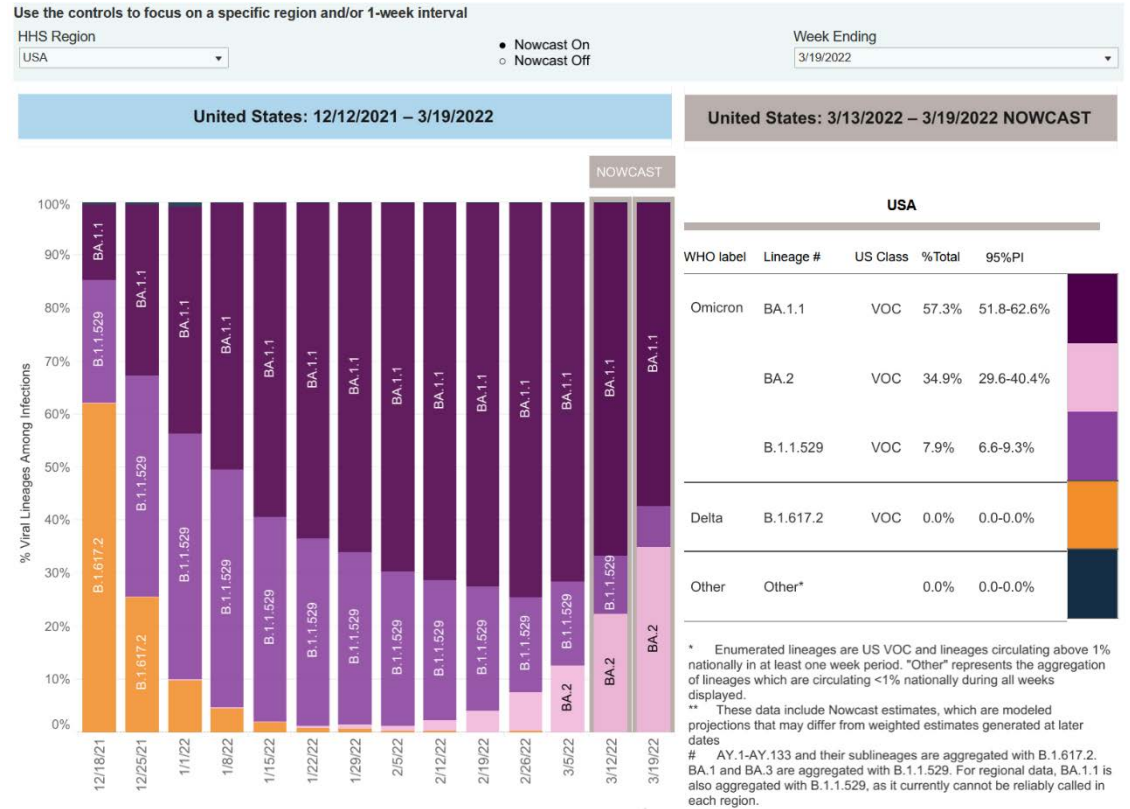


Related Pages

- > Free N95 Respirator Manufacturers
- > How to Use Your N95 Respirator
- > Use and Care of Masks

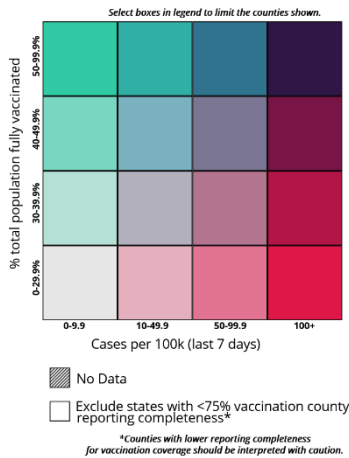
Variant Proportions

<https://covid.cdc.gov/covid-data-tracker/#variant-proportions>

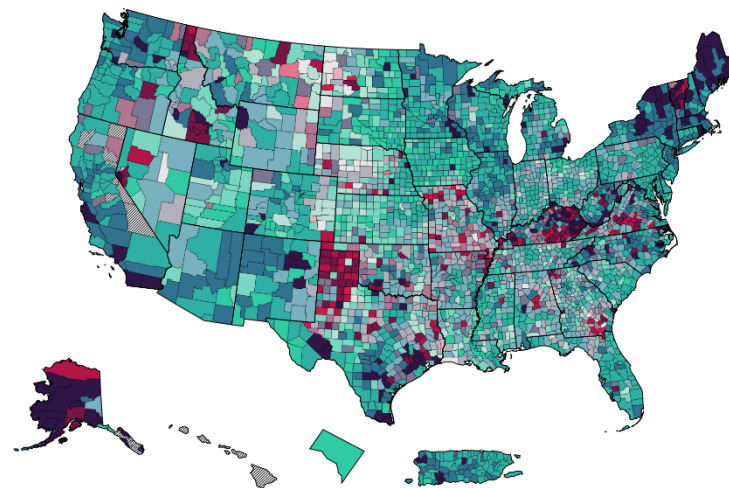


County Vaccination Coverage and Other Outcomes

<https://covid.cdc.gov/covid-data-tracker/#vaccination-case-rate>



United States** COVID-19 Reported Cases per 100,000 Population (last 7 days)¹ and Percent of Total Population Fully Vaccinated²



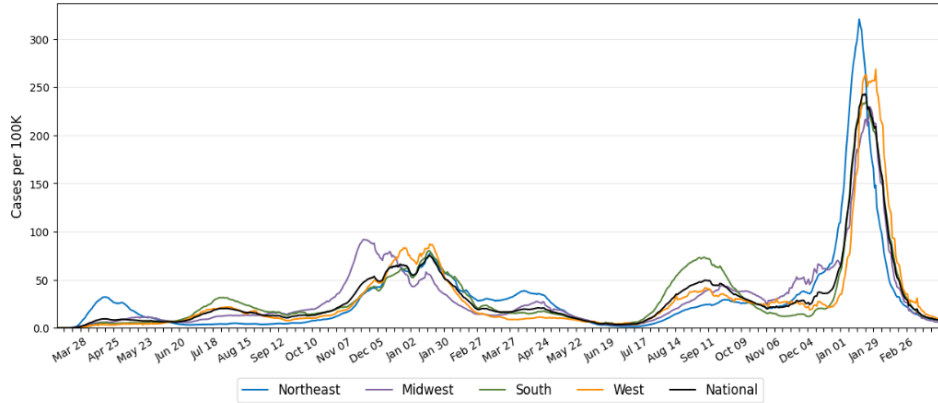
COVID-19 Community Profile Report 03-17-2022

<https://beta.healthdata.gov/Health/COVID-19-Community-Profile-Report/gqxm-d9w9>

TIME SERIES BY CENSUS REGION

New Cases per 100K (7-day average)

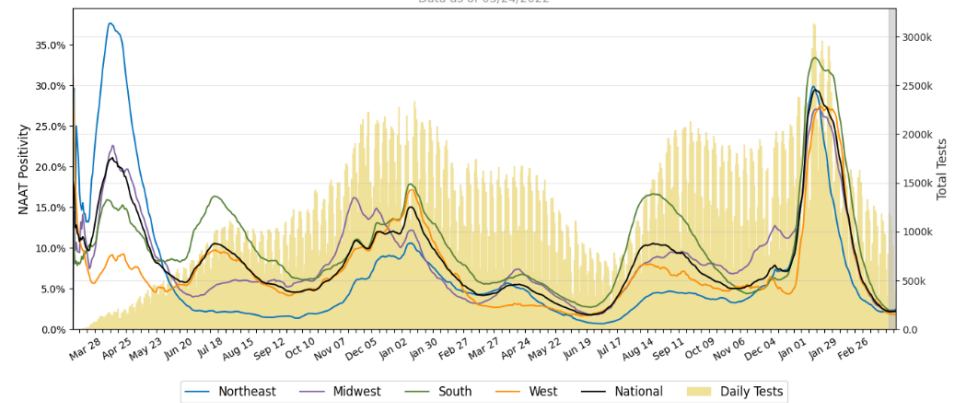
Data as of 03/24/2022



NAAT Positivity (7-day average)

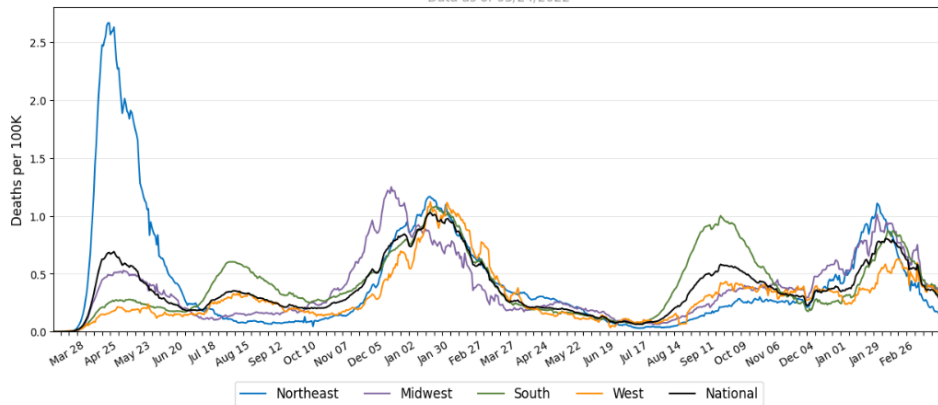
Data as of 03/24/2022

Incomplete Reporting



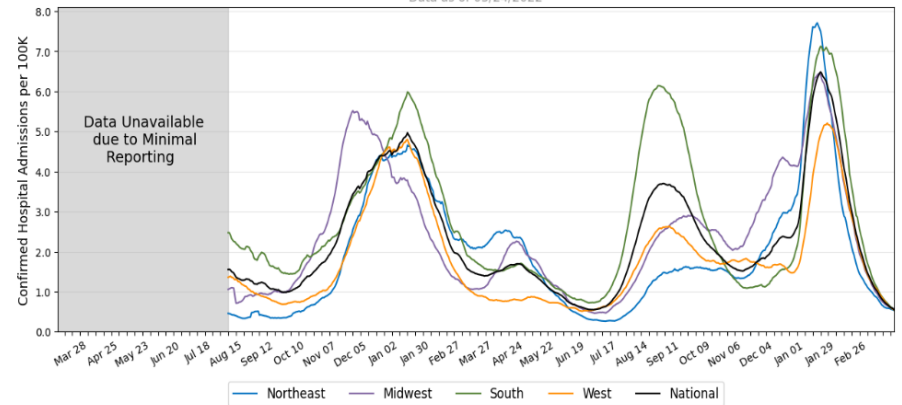
New Deaths per 100K (7-day average)

Data as of 03/24/2022



New Confirmed Hospital Admissions per 100K (7-day average)

Data as of 03/24/2022



Source: CDC state-reported data (cases and deaths), Unified Testing Dataset, Unified Hospital Dataset.

See <https://www.census.gov/geographies/reference-maps/2010/geo/2010-census-regions-and-divisions-of-the-united-states.html> for census regions.

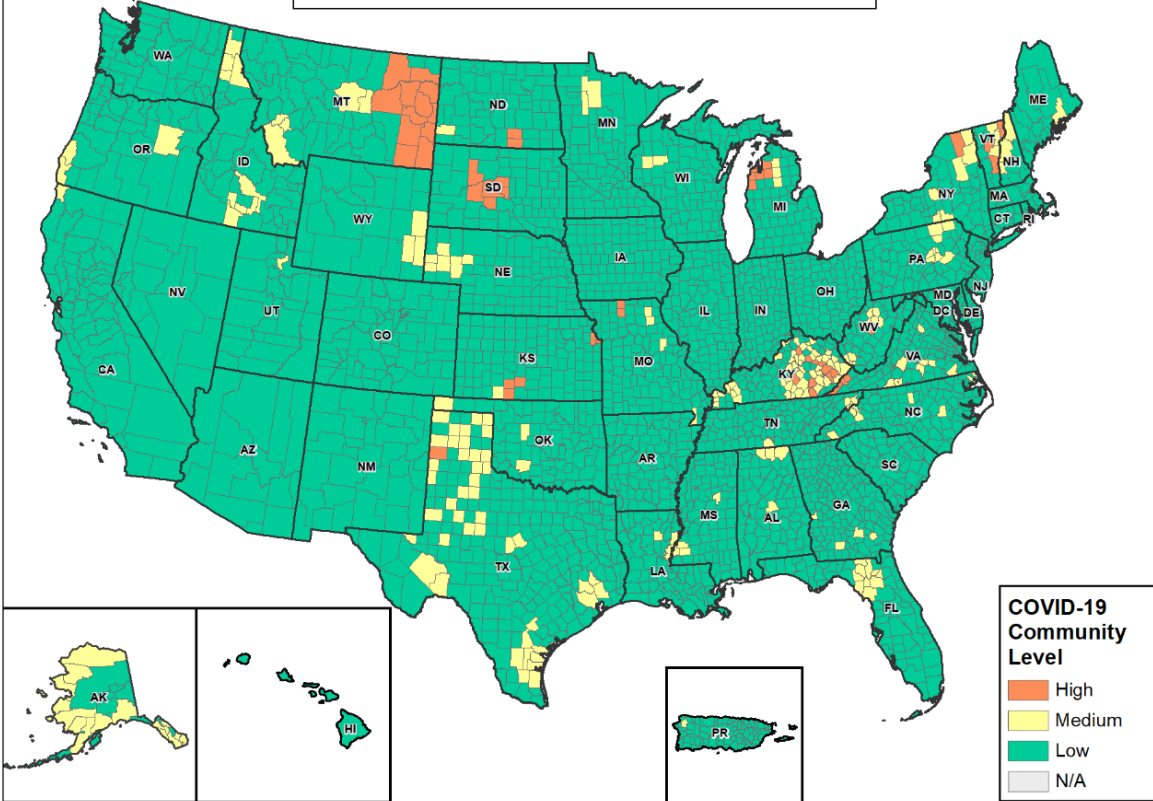
INITIAL PUBLIC RELEASE // SUBJECT TO CHANGE



COVID-19 COMMUNITY LEVEL

Date: 3/24/2022
 Source: CDC Aggregate County Data and Unified Hospital Dataset

COVID-19 Community Level by County 03/17/2022-03/23/2022



COVID-19 Community Level
 High
 Medium
 Low
 N/A

Source: CDC Aggregate County Dataset (cases), Unified Hospital Dataset (admissions)

Notes: Cases data from March 17-23, 2022, hospital data from March 16-22, 2022. COVID-19 Community Level is determined by the higher of the new admissions and inpatient bed metrics, based on the current level of new cases per 100,000 population in the past 7 days. Admissions per 100k refers to the 7-day total of confirmed COVID-19 hospital admissions. COVID Inpatient Occupancy refers to the percent of staffed inpatient beds occupied by a COVID-19 patient (7-day average). A county is N/A if hospital data is not available. County data is mapped from Health Service Areas, defined as a single county or cluster of counties that are generally self-contained with respect to hospital care. Previous week levels are computed based on current data. See Data Sources/Methods slides for additional details.

Counties by COVID-19 Community Level Component Metrics

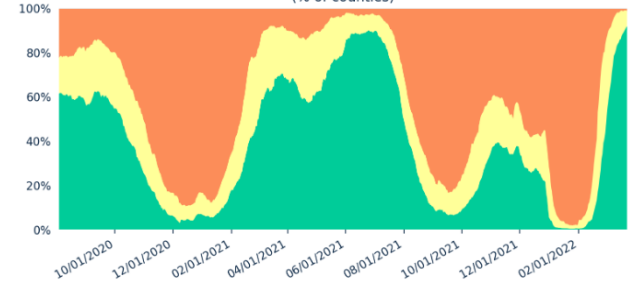
< 200 Cases per 100k			
Admissions per 100k	< 10.0	10.0 - 19.9	20.0 +
# of counties (change)	2,938 (↑176)	101 (↓98)	31 (↑11)
% of counties (change)	91.2% (↑5.5%)	3.1% (↓3.0%)	1.0% (↑0.3%)
COVID Inpatient Occupancy	< 10.0%	10.0% to 14.9%	15.0% +
# of counties (change)	3,061 (↑105)	1 (↓19)	5 (↑1)
% of counties (change)	95.1% (↑3.3%)	0.0% (↓0.6%)	0.2% (↑0.0%)

200 + Cases per 100k			
Admissions per 100k	N/A	< 10.0	10.0 +
# of counties (change)	N/A	133 (↓71)	17 (↓18)
% of counties (change)	N/A	4.1% (↓2.2%)	0.5% (↓0.6%)
COVID Inpatient Occupancy	N/A	< 10.0%	10.0% +
# of counties (change)	N/A	149 (↓84)	1 (↓3)
% of counties (change)	N/A	4.6% (↓2.6%)	0.0% (↓0.1%)

Counties by COVID-19 Community Level

Category	Low	Medium	High
# of counties (change)	2,934 (↑181)	233 (↓174)	53 (↓7)
% of counties (change)	91.1% (↑5.6%)	7.2% (↓5.4%)	1.6% (↓0.2%)
% of population (change)	95.5% (↑1.9%)	4.2% (↓1.8%)	0.3% (↓0.1%)

COVID-19 Community Levels Over Time
 (% of counties)



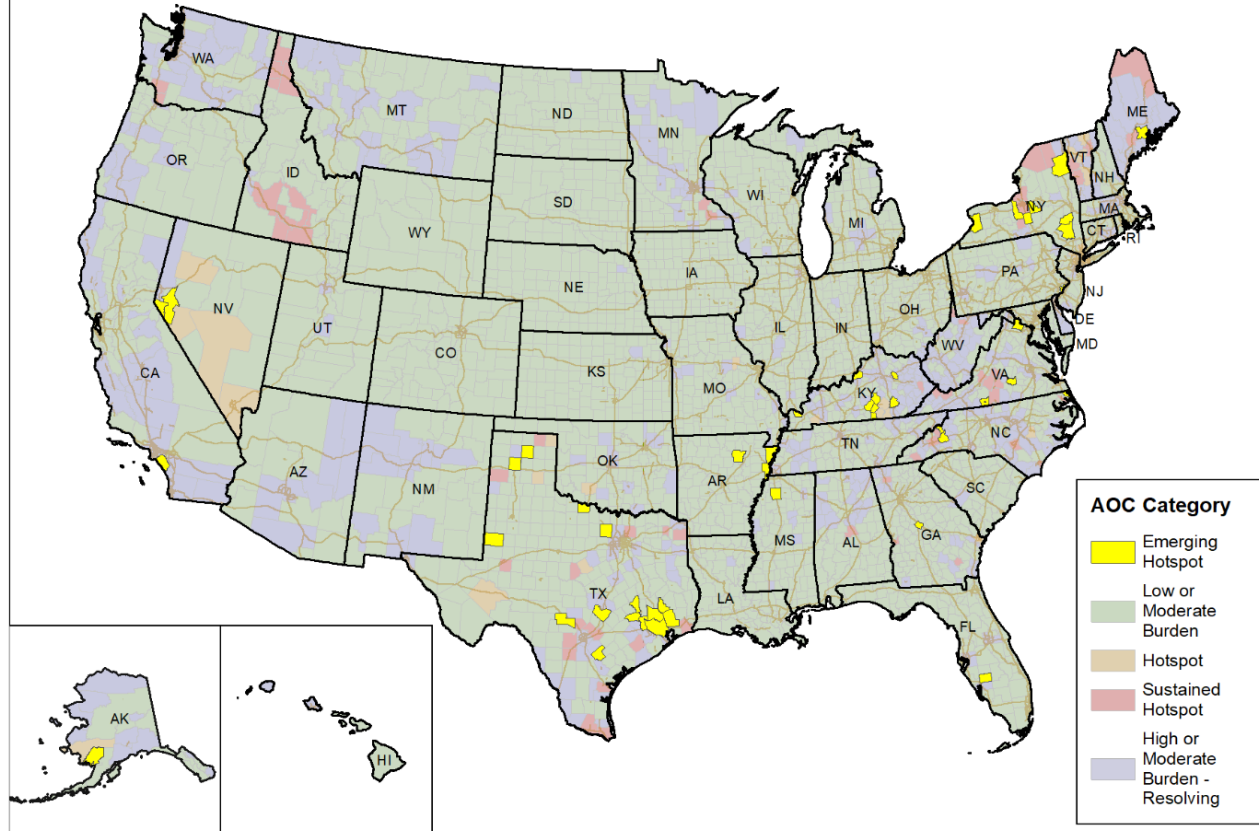
INITIAL PUBLIC RELEASE // SUBJECT TO CHANGE



AREA OF CONCERN CONTINUUM

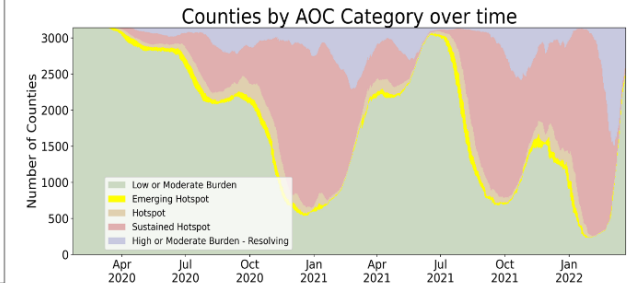
Date: 3/24/2022

Area of Concern Continuum by County 23MAR2022



The Areas of Concern Continuum (AOCC) is used to describe communities as they progress through stages of the epidemic. There are 7 possible AOC classifications based on current and recent history of case and testing data for the location:

- (1) **Low Burden** – communities with minimal activity
 - (2) **Moderate Burden** – communities with moderate disease activity
 - (3) **Emerging Hotspot** – communities with a high likelihood to become hotspots in the next 1-7 days
 - (4) **Hotspot** – communities that have reached a threshold of disease activity considered as being of high burden
 - (5) **Sustained Hotspot** – communities that have had a high sustained case burden and may be higher risk for experiencing healthcare resource limitations
 - (6) **High Burden – Resolving** – communities that were recently identified as hotspots and are now improving
 - (7) **Moderate Burden – Resolving** – communities that have a moderate level of burden, but are demonstrating improvement
- See Data Sources/Methods slides for more information.



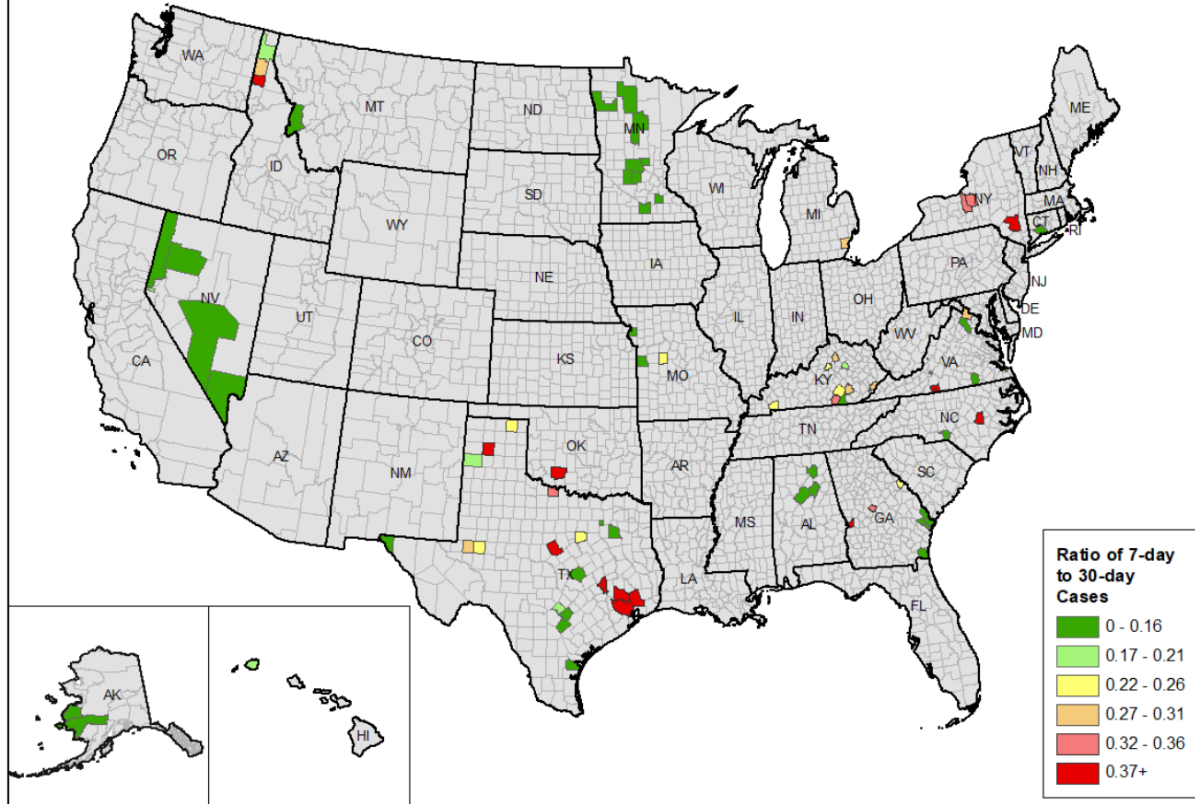
INITIAL PUBLIC RELEASE // SUBJECT TO CHANGE



AREA OF CONCERN CONTINUUM - RAPID RISER COUNTIES

Date: 3/24/2022
 Source: CDC Aggregate
 County Data

Counties with Rapid Rise in Cases in the Last 14 Days



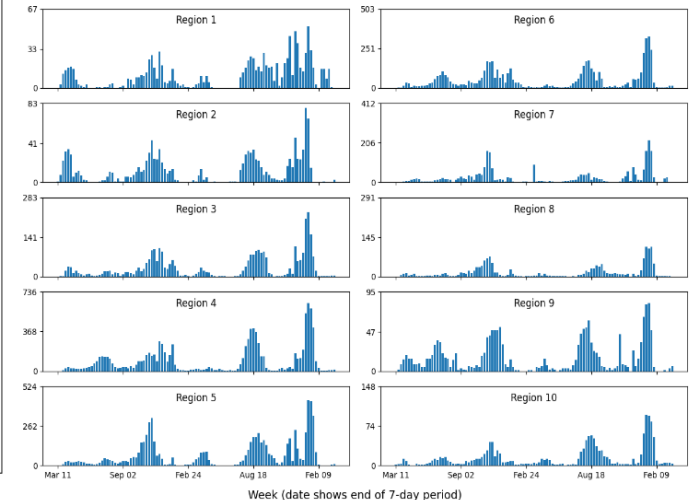
This map shows counties that have seen a rapid rise in cases within the last 14 days by meeting the following **Rapid Riser County** criteria:

- >100 new cases in last 7 days
- >0% change in 7-day incidence
- >-60% change in 3-day incidence
- 7-day incidence / 30-day incidence ratio >0.31
- one or both of the following triggering criteria:
 - (a) >60% change in 3-day incidence,
 - (b) >60% change in 7-day incidence

The color indicates *current* acceleration in cases (ratio of 7-day to 30-day cases). Counties in **light red** and **red** are continuing to see accelerating cases in the most recent week, while those in **dark green** and **green** may have seen declines in the most recent week.

The bar charts below show the history of rapid riser counties by FEMA region and week, indicating when different geographic areas have seen the greatest acceleration in cases.

of Distinct Rapid Riser Counties by Week and FEMA Region
 (vertical axis scaled to number of counties in region)



INITIAL PUBLIC RELEASE // SUBJECT TO CHANGE















COVID-19 By the Numbers

<https://www.cdc.gov/coronavirus/2019-ncov/cdcresponse/by-the-numbers.html>

COVID-19 RESPONSE BY THE NUMBERS As of March 21, 2022



Accessible www.cdc.gov/coronavirus/2019-ncov/cdcresponse/by-the-numbers.html

	10,254	CDC personnel supporting the outbreak response		61.01+ million	Times people have used CDC's online Coronavirus Self-Checker
	1,917	CDC deployers who have conducted 4,580 deployments to 364 cities across the United States and abroad		1.7+ million	Calls and emails to CDC-INFO
	433	COVID-19 studies published in CDC's Morbidity and Mortality Weekly Report (MMWR)		3.9+ billion	Times people have looked for information on CDC websites
	10,383	Documents providing information and guidance for government agencies, businesses, and the public		4.9+ billion	Social media impressions on 20,620 CDC response-related posts
	837+ million	COVID-19 tests conducted by public and private laboratories in the United States		102, 257+	Inquiries from doctors, nurses, or other clinical staff and health departments received by CDC
	254+ million	People who have received at least one dose of a COVID-19 vaccine		217+ million	People who have been fully vaccinated with a COVID-19 vaccine

[cdc.gov/coronavirus](https://www.cdc.gov/coronavirus)

CS316565-A

CDC What's New & Updated



<https://www.cdc.gov/coronavirus/2019-ncov/whats-new-all.html>

- No updates or Data

What's New & Updated

[Print](#)

Stay up to date with new and updated content on the COVID-19 website. Content listed below includes significant changes like new pages and guidance recommendations in addition to minor updates like style and layout changes to website content. You can also stay updated by [signing up for email updates](#), [syndicating available content](#), and subscribing to the [COVID-19 RSS Feed](#).

01/01/2021  To 03/25/2022  Filter by Type
Filter by Audience Filter by Topic

No results found in

Newest to Oldest

CDC Guidance

<https://www.cdc.gov/coronavirus/2019-ncov/communication/guidance-list.html?Sort=Date%3A%3Adesc>

[Guidance for Reporting SARS-CoV-2 Sequencing Results](#)

Find guidance and examples for reporting SARS-CoV-2 sequencing results to state, local, tribal, or territorial public health departments. Date: 3/16/22

[Guidance for Antigen Testing for SARS-CoV-2 for Healthcare Providers Testing Individuals in the Community](#)

Proper interpretation of antigen test results is important for accurate clinical management of patients with suspected COVID-19. This guidance can help healthcare providers make the most effective use of antigen tests in different situations. Date: 3/3/22

[Operational Considerations for Routine Immunization Services during the COVID-19 pandemic in non-US Settings Focusing on Low- and Middle-Income Countries](#)

Learn COVID-19 operational considerations to implement immunization services in non-US countries with low or middle incomes. Date: 3/2/22

[Guidance for General Laboratory Safety Practices during the COVID-19 Pandemic](#)

This guidance addresses general safety concerns for laboratory personnel during the COVID-19 pandemic. It includes recommendations for risk assessments, health and safety plans, social distancing, face coverings, disinfection, and personal hygiene. Date: 3/1/22

[Prioritizing Case Investigation and Contact Tracing for COVID-19](#)

The page provides guidance to health departments regarding prioritization recommendations for contact tracing and case investigation. Date: 2/27/22

Science and Research

<https://www.cdc.gov/coronavirus/2019-ncov/science/science-and-research.html>

Recent CDC Articles

- [EARLY RELEASE: Use of At-Home COVID-19 Tests — United States, August 23, 2021–March 12, 2022](#)
- [Lessons Learned from Programmatic Gains in HIV Service Delivery During the COVID-19 Pandemic — 41 PEPFAR-Supported Countries, 2020](#)
- [COVID-19–Associated Hospitalizations Among Adults During SARS-CoV-2 Delta and Omicron Variant Predominance, by Race/Ethnicity and Vaccination Status — COVID-NET, 14 States, July 2021–January 2022](#)
- [Effectiveness of mRNA Vaccination in Preventing COVID-19–Associated Invasive Mechanical Ventilation and Death — United States, March 2021–January 2022](#)
- [The Advisory Committee on Immunization Practices' Recommendation for Use of Moderna COVID-19 Vaccine in Adults Aged ≥18 Years and Considerations for Extended Intervals for Administration of Primary Series Doses of mRNA COVID-19 Vaccines — United States, February 2022](#)
- [Hospitalization of Infants and Children Aged 0–4 Years with Laboratory-Confirmed COVID-19 — COVID-NET, 14 States, March 2020–February 2022](#)
- [Effectiveness of 2-Dose BNT162b2 \(Pfizer BioNTech\) mRNA Vaccine in Preventing SARS-CoV-2 Infection Among Children Aged 5–11 Years and Adolescents Aged 12–15 Years — PROTECT Cohort, July 2021–February 2022](#)

Journals and Studies



[Morbidity and Mortality Weekly Report](#)
[Results from COVID-19 outbreak investigations](#)



[Preventing Chronic Disease](#)
[Articles on COVID-19 and chronic disease](#)



[Emerging Infectious Diseases](#)
[Studies of COVID-19 since the beginning of the pandemic](#)



State Data

<https://covid19.ca.gov/>



Office of Governor
GAVIN NEWSOM

Press Releases, Executive Orders,
Media Advisories, and Proclamations.
<https://www.gov.ca.gov/newsroom/>

The SMARTER Plan is the next phase of California's COVID-19 response
<https://covid19.ca.gov/smarter/>

Tracking COVID-19

<https://update.covid19.ca.gov/#top>
<https://www.cdph.ca.gov/Programs/CID/DCDC/Pages/Immunization/ncov2019.aspx#>
<https://www.cdph.ca.gov/Programs/CID/DCDC/Pages/COVID-19/CovidDataAndTools.aspx>

California Healthy Places Index

<https://covid19.healthyplacesindex.org/>
<https://map.healthyplacesindex.org/>

CDPH Statewide Guidance

<https://www.cdph.ca.gov/Programs/CID/DCDC/Pages/Guidance.aspx>
<https://schools.covid19.ca.gov/>

CDPH Office of Communications

<https://www.cdph.ca.gov/Programs/OPA/Pages/News-Releases-2022.aspx>
<https://www.cdph.ca.gov/Programs/OPA/Pages/News-Releases-2021.aspx>

Data models

<https://covid19.ca.gov/data-and-tools/>

Cal/OSHA

<https://www.dir.ca.gov/dosh/>
<https://www.dir.ca.gov/dosh/COVID19citations.html>
<https://www.dir.ca.gov/oshab/oshab.html>

Vaccines

<https://covid19.ca.gov/vaccines/>
<https://myturn.ca.gov/>

As of March 25, 2022, California has confirmed a total of 8,476,399 COVID-19 cases and 87,809 deaths.





Riverside County Data

<https://www.rivcoph.org/coronavirus>

Confirmed
596,793
(+209)

Currently Hospitalized
75
Includes 12 in ICU

Deaths
6,445
(+0)

Recovered
587,498
(+208)

Zip Code & Community Data [here](#)

Daily Case Rate / 100k
3.7
(7-Day Avg & 7-Day Lag)

Positivity
2.1%
(7-Day Avg & 7-Day Lag)

Daily Test Rate / 100k
268.7
(7-Day Avg & 7-Day Lag)

Dashboard -Click [here](#) for more detailed city/community data and reports

Tests for COVID-19 by Census Designated Place (CDP), Riverside County: 3/6/22 - 3/12/2022

<https://www.rivcoph.org/Portals/0/Documents/CoronaVirus/Reports/COVID-19%20Tests%20by%20CDP%20Riverside%20County%20Merged.pdf?x=1648238440094>

CDP Name	Community Population	Share of County Population	Positive Tests (7-Day)	Total Tests (7-Day)	Share of Tests	Share Difference	Testing Shortfall	Previous 7-Day Positivity	Current 7-Day Positivity	Tests per 1K
Anza	3,066	0.1%	0	39	0.1%	-0.1%	29	5.3%	0.0%	12.7
Banning	30,357	1.3%	7	528	1.0%	-0.3%	149	2.2%	1.3%	17.4
Beaumont	51,994	2.2%	23	1,359	2.6%	0.4%	-200	2.4%	1.7%	26.1
Bermuda Dunes	7,909	0.3%	5	141	0.3%	-0.1%	35	4.6%	3.5%	17.8
Blythe	20,240	0.9%	6	701	1.3%	0.5%	-250	2.0%	0.9%	34.6
Cabazon	2,816	0.1%	1	62	0.1%	0.0%	1	0.0%	1.6%	22.0
Calimesa	9,987	0.4%	4	291	0.6%	0.1%	-68	3.0%	1.4%	29.1
Canyon Lake	11,236	0.5%	2	278	0.5%	0.1%	-28	1.4%	0.7%	24.7
Cathedral City	54,190	2.3%	32	1,001	1.9%	-0.4%	207	3.1%	3.2%	18.5
Cherry Valley	6,115	0.3%	1	169	0.3%	0.1%	-33	1.7%	0.6%	27.6
Coachella	45,043	1.9%	19	874	1.7%	-0.2%	130	2.3%	2.2%	19.4
Corona	165,457	7.0%	72	3,348	6.4%	-0.6%	341	1.9%	2.2%	20.2
Coronita	2,802	0.1%	1	65	0.1%	0.0%	-3	5.2%	1.5%	23.2
Desert Edge	4,579	0.2%	3	61	0.1%	-0.1%	41	3.3%	4.9%	13.3
Desert Hot Springs	29,344	1.2%	15	443	0.8%	-0.4%	211	4.4%	3.4%	15.1
Desert Palms	6,971	0.3%	0	124	0.2%	-0.1%	31	6.2%	0.0%	17.8
East Hemet	18,146	0.8%	7	366	0.7%	-0.1%	39	1.8%	1.9%	20.2
Eastvale	68,579	2.9%	46	1,585	3.0%	0.1%	-56	2.0%	2.9%	23.1
El Cerrito	5,175	0.2%	2	109	0.2%	0.0%	6	3.9%	1.8%	21.1
El Sobrante	14,010	0.6%	10	377	0.7%	0.1%	-65	2.3%	2.7%	26.9
French Valley	37,096	1.6%	11	776	1.5%	-0.1%	51	3.0%	1.4%	20.9
Garnet	6,878	0.3%	6	77	0.1%	-0.1%	76	3.3%	7.8%	11.2
Good Hope	10,105	0.4%	4	153	0.3%	-0.1%	72	6.5%	2.6%	15.1
Green Acres	2,226	0.1%	0	34	0.1%	0.0%	16	0.0%	0.0%	15.3

RIVERSIDE COUNTY DAILY COVID-19 REPORT

<https://www.rivcoph.org/Portals/0/Documents/CoronaVirus/Reports/DailyEpidemiologySummary.pdf?x=1648238440094>



Mar 24, 2022

TOTAL CASES
596,584

NEW REPORTED CASES
245

TOTAL DEATHS
6,445

NEW DEATHS
9

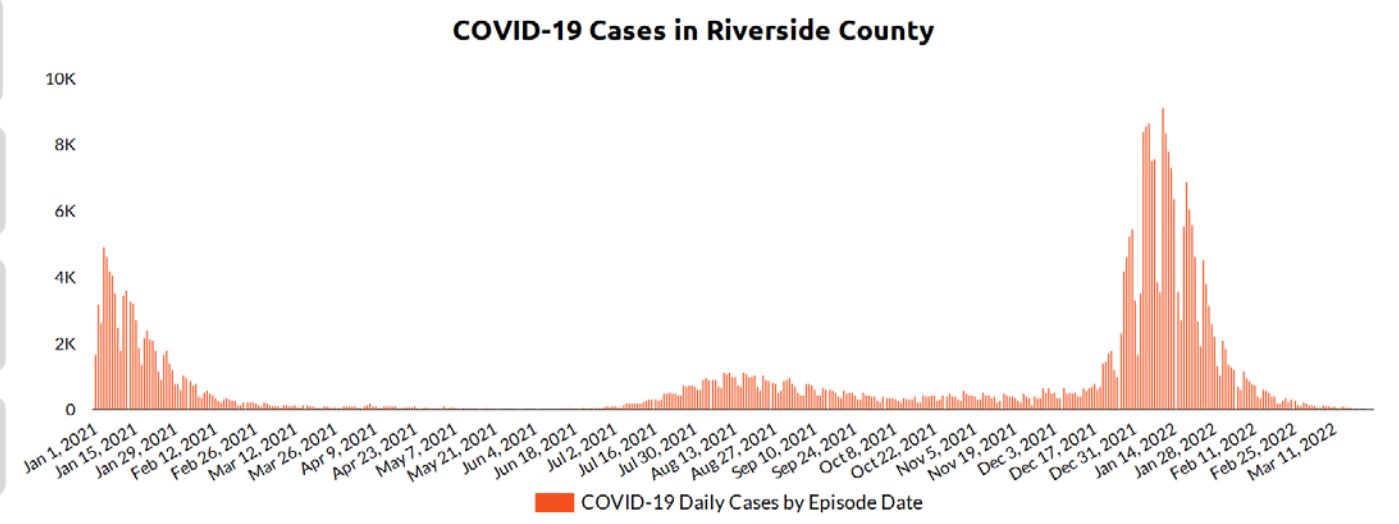
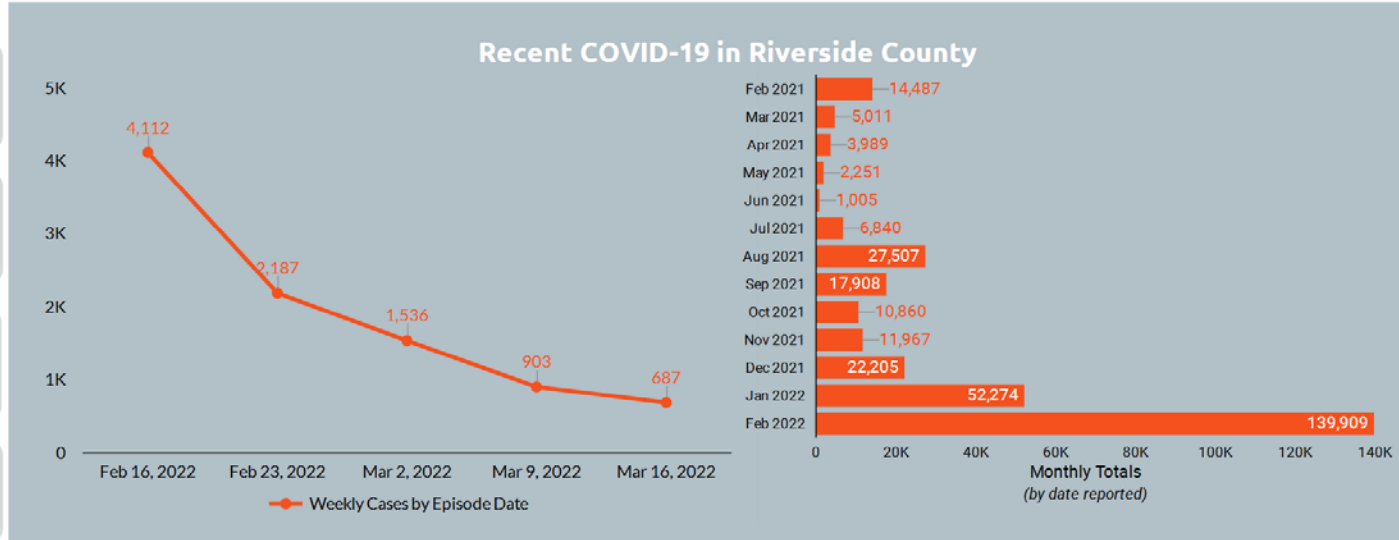
TOTAL RECOVERED
587,290

PROBABLE CASES*
23,852

CURRENT HOSPITALIZED (Includes ICU)
75

CURRENT ICU
11

RIVERSIDE COUNTY COVID-19 CASES



RCCD COVID-19 Dashboard

<https://www.rccd.edu/return/Pages/Cases.aspx>

3/18/2022

RIVCO/ CA Updated

3/18/2022

RCCD Cases Updated

106,271

RCCD COVID Test To...

3327

RCCD Positives

-0.8%

RCCD vs Ca Rate Dif

-1.4%

RCCD vs Riv County Rate Dif



RCCD COVID-19 Positivity Rate

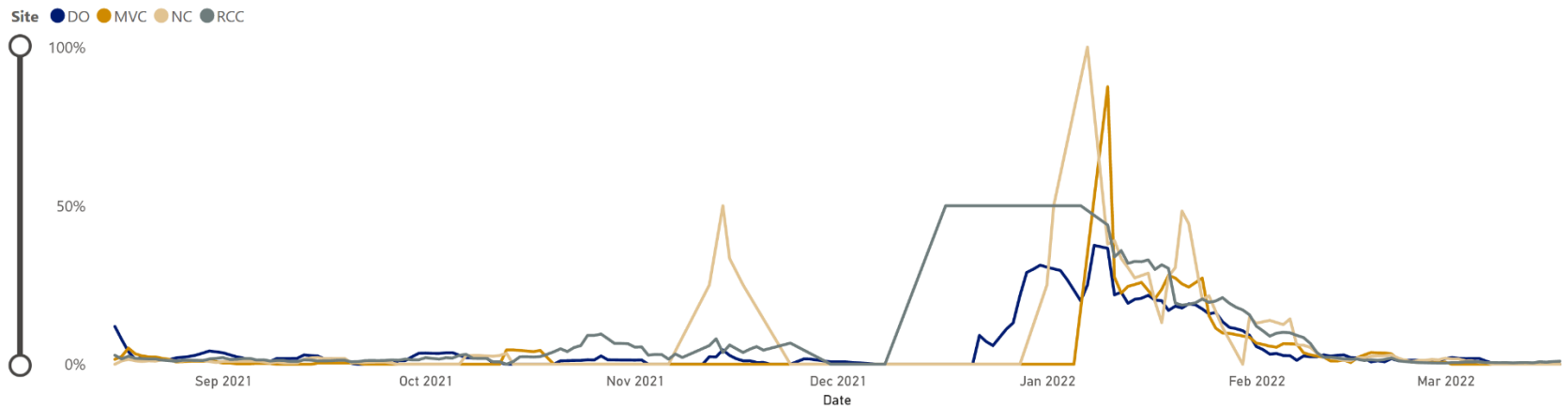
RCCD data is derived from Cleared4 and California and Riverside County Data is derived from California Health and Human Services Open Data Portal

- Employee
- Student
- Visitor

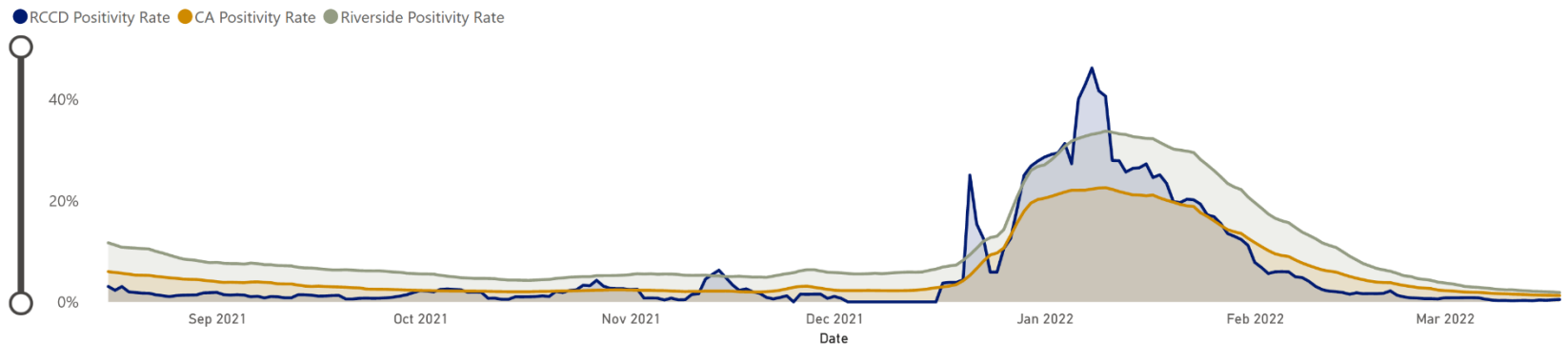
Site

- DO
- MVC
- NC
- RCC

RCCD Positivity Rate by COL (Rol Avg Past 7-Days)



Positivity Rate by RCCD vs Riverside County vs California (Rol Avg Past 7-Days)



Weather

<https://www.weather.gov/forecastpoints#>

Latest hazard threat table:

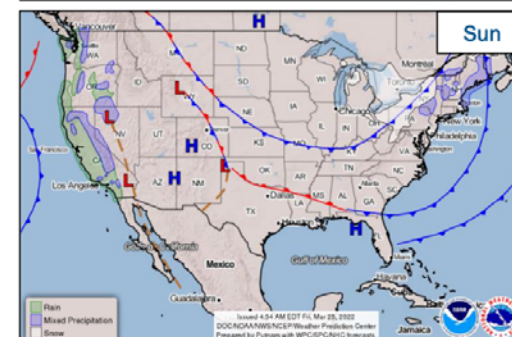
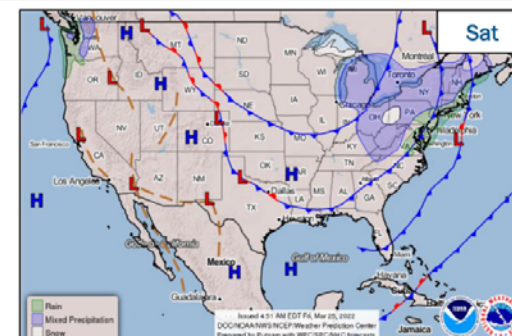
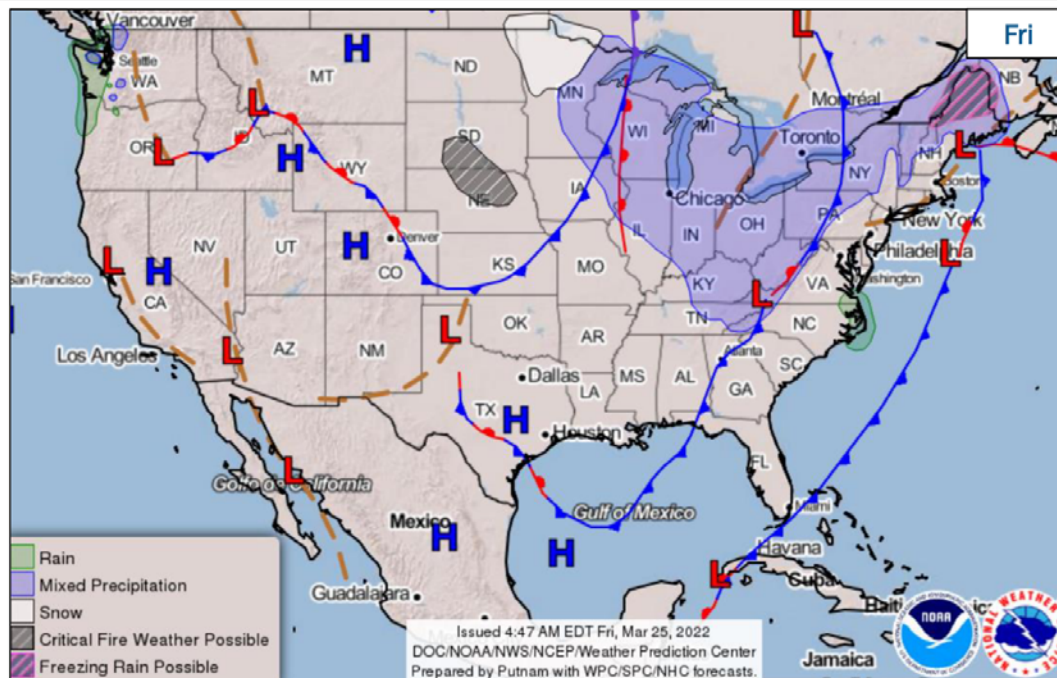
<https://www.wrh.noaa.gov/sqx/event/dsstable.php>

WEATHER RISK OUTLOOK

Risk levels incorporate potential impacts from weather hazards and likelihood of occurrence for a reasonable worst case scenario.

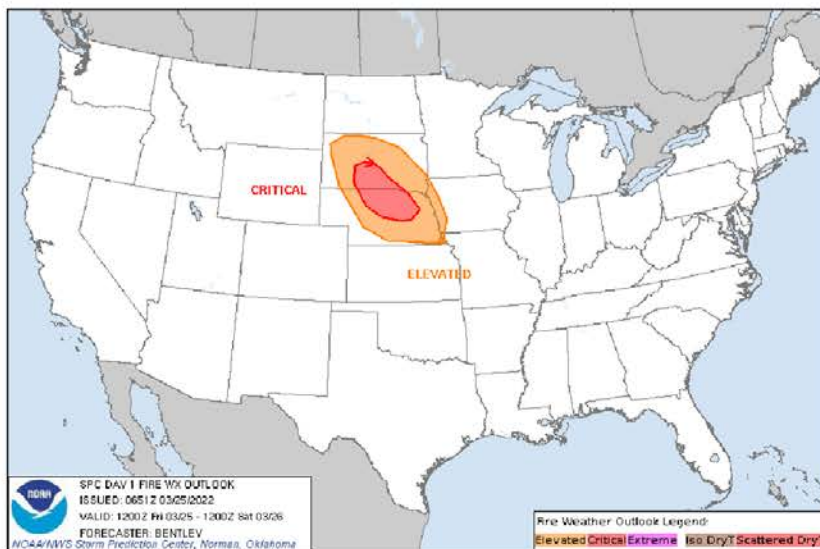
	Thu 3/24	Fri 3/25	Sat 3/26	Sun 3/27	Mon 3/28	Tue 3/29	Wed 3/30
San Diego Marine	Dense Fog	Dense Fog			Wind Large Seas	Wind Large Seas	
Orange/San Diego Beaches	Dense Fog	Dense Fog			Rain Surf	Rain Surf	
San Diego Coast San Diego, Oceanside	PM Dense Fog	Dense Fog			Rain	Rain	
San Diego Valleys Alpine, Escondido, Ramona	Heat	Heat			Rain	Rain	
San Diego County Mtns Mt Laguna, Julian, Palomar Mt				Wind	Rain Wind	Rain Wind	
San Diego Deserts Anza Borrego, Ocotillo Wells	Heat	Heat	Heat	Wind	Rain Wind	Rain Wind	
Orange County Coast Laguna and Huntington Beaches	PM Dense Fog	Dense Fog			Rain	Rain	
Orange County Inland Anaheim, Irvine	Heat	Heat			Rain	Rain	
Santa Ana Mountains Silverado, Santiago Peak					Rain	Rain	
Inland Empire Ontario, Riverside	Heat	Heat	Heat		Rain	Rain	
Riverside County Mtns Mt San Jacinto, Idyllwild				Wind	Rain/Snow Wind	Rain/Snow Wind	
Coachella Valley Palm Springs, Indio	Heat	Heat	Heat	Wind	Rain Wind	Rain Wind	
San Bernardino Mtns Wrightwood, Big Bear				Wind	Rain/Snow Wind	Rain/Snow Wind	
High Deserts Victorville, Lucerne Valley	Heat	Heat	Heat	Wind	Rain Wind	Rain Wind	
Risk Levels	Little to None	Minor	Moderate	Major	Extreme		

National Weather Forecast

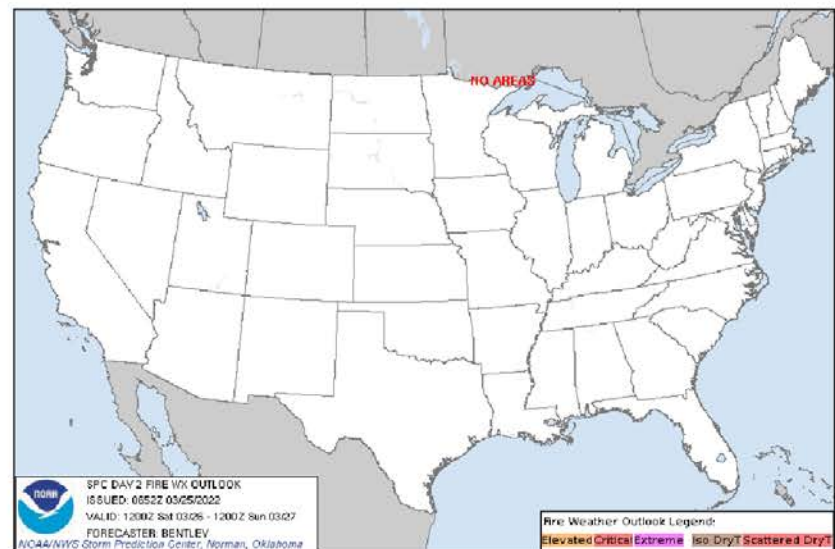


National Watch Center

Fire Weather Outlook



Today

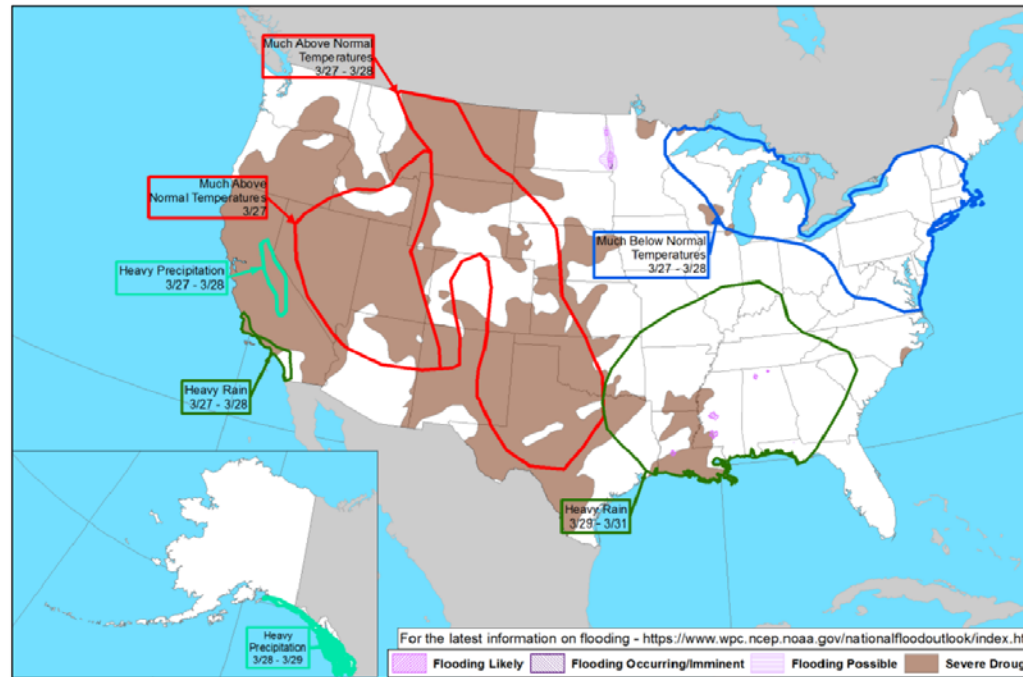


Tomorrow



National Watch Center

Hazards Outlook – Mar 27 - 31

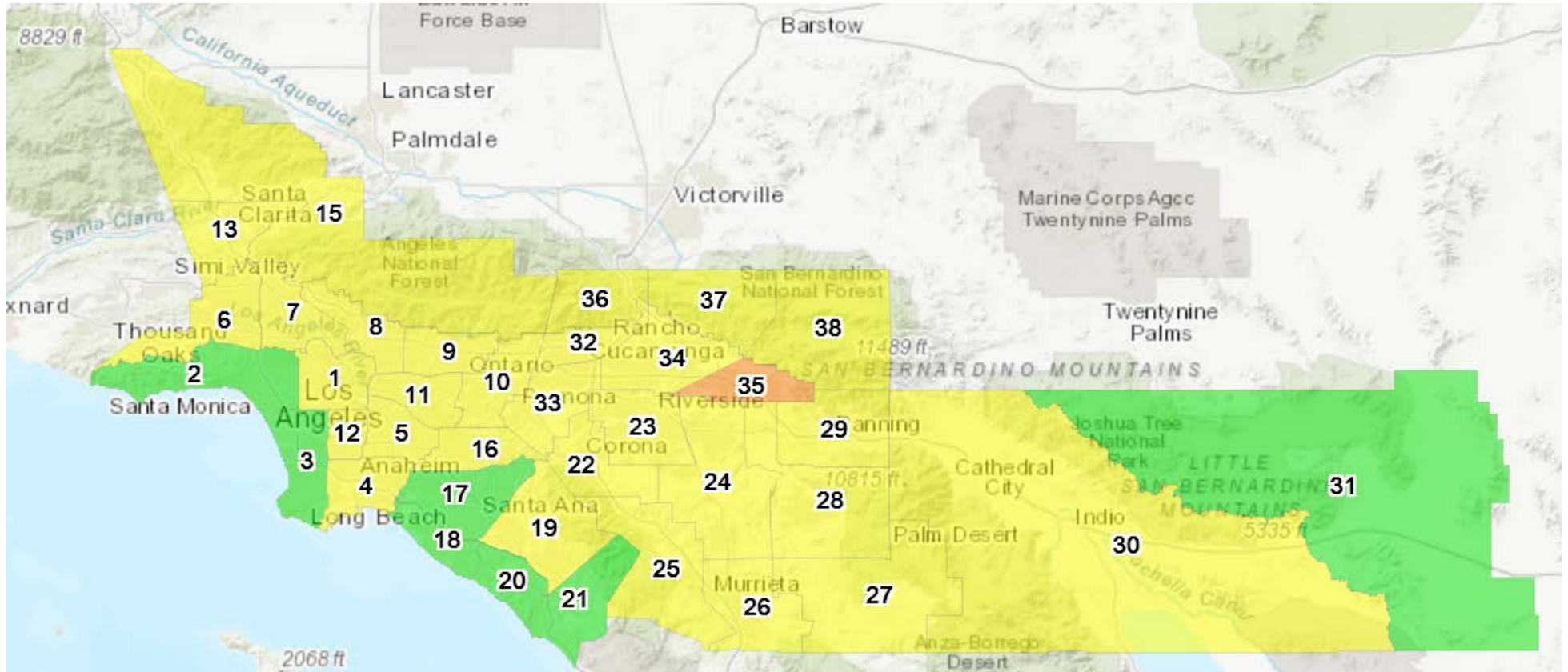


National Watch Center



Today's Forecast

<https://www.arcgis.com/apps/webappviewer/index.html?id=85c7770bac684749a631bd7b42eac1b7>



Legend

The Air Quality Index (AQI) is an index for reporting daily air quality that conveys how air pollution can affect public health. The AQI is divided into six levels of health concern:

- AQI Value
- Hazardous (301-500)
 - Very Unhealthy (201-300)
 - Unhealthy (151-200)
 - Unhealthy for Sensitive Groups (101-150)
 - Moderate (51-100)
 - Good (0-50)