



**\*\*Extraordinary Assumptions:** There are many different data sources in this report and not all of them match. This document is informational purposes only, the goal is to provide an overall picture of the current situation.

# Situation Summary

## Friday, January 28, 2022 - Day 688 of the Pandemic

### as of 3:30 PM

### COVID-19 by the Numbers

01/28/2022	Riverside	Imperial	Kern	Los Angeles*	Orange	San Bernardino	San Diego	San Luis Obispo	Santa Barbara	Ventura	California	United States	Global
Total Cases	548,121	50,153	174,456	2,473,332	511,255	525,249	683,027	46,374	76,546	160,466	7,698,918	73,512,366	364,191,494
Total Cases Per Capita	22,208	26,169	18,814	24,112	15,836	23,688	20,265	16,630	16,773	18,818	19,185	22,011	4,599
% of Total Cases/Population	22.21%	26.17%	18.81%	24.11%	15.84%	23.69%	20.27%	16.63%	16.77%	18.82%	19.19%	22.01%	4.60%
Recovered*	<u>401,278</u>	<u>41,410</u>	<u>165,275</u>	Not Reported	<u>362,201</u>	<u>487,857</u>	Not Reported	<u>45,440</u>	<u>68,932</u>	<u>150,562</u>	<u>3,123,480</u>	<u>45,756,826</u>	<u>292,123,530</u>
% of total recovered/population	16.26%	21.61%	17.82%	Not Reported	11.22%	22.00%	Not Reported	16.29%	15.10%	17.66%	7.78%	13.70%	3.69%
Total Deaths	5,726	845	397	28,467	6,038	6,297	4,643	391	604	1,271	38,508	876,632	5,631,457
Deaths Per Capita	232.00	440.91	42.81	277.52	187.02	283.98	137.76	140.21	132.35	149.05	95.96	262.48	71.12
% of Total Deaths/Population	0.23%	0.44%	0.04%	0.28%	0.19%	0.28%	0.14%	0.14%	0.13%	0.15%	0.10%	0.26%	0.07%
% of State's Cases	7.12%	0.65%	2.27%	32.13%	6.64%	6.82%	8.87%	0.60%	0.99%	2.08%	10.47%	20.19%	
Total Hospital Beds	3,574	194	1,141	19,510	6,090	3,736	6,552	453	604	1,227	67,756		
Currently in Hospitals	1,004	104	312	4,192	1,022	1,119	1,253	57	125	326	14,674		
Hospital Beds Available**	2,570	90	829	15,318	5,068	2,617	5,299	396	479	901	53,082		
Total Hospital ICU Beds**	256	32	76	1,238	314	339	377	27	37	83	4,023		
Currently in ICU	171	28	46	801	178	230	213	9	17	58	2,585		
ICU Beds Available	85	4	30	437	136	109	164	18	20	25	1,438		
Case Fatality Rate	1.04%	1.68%	0.23%	1.15%	1.18%	1.20%	0.68%	0.84%	0.79%	0.79%	0.50%	1.19%	1.55%
Population***	2,468,145	191,649	927,251	10,257,557	3,228,519	2,217,398	3,370,418	278,862	456,373	852,747	40,129,160	333,976,981	7,918,710,000
% of State Population	6.15%	0.48%	2.31%	25.56%	8.05%	5.53%	8.40%	0.69%	1.14%	2.13%	12.02%	4.22%	

Sources: CDPH, WHO, CDC, Local County Data, LA Times

The date for which case statistics and hospital data were reported. Hospital COVID data are self-reported through a portal managed by the California Hospital Association and pulled at 2pm. COVID case statistics are reported by local health departments to CalREDIE and are pulled at 2pm. Hospital data and case statistics are integrated by the California Department of Technology and made available through the Open Data Portal the following morning. CA Open Data Portal is at least 24 Hours behind although a backlog of new case reports at the State level has ostensibly been cleared, some County dashboards still contain notes that indicate data are missing. (\*Many County sites do not report recovery rates or are only updating once a week)( \*\* based on calculation)(\*\*\*California Demographics from State Database Blueprint Data Chart 12-15-20 & census.gov)

**News**  
More detail on page 2

**Global Data**  
More detail on page 7

**US Data**  
More detail on page 8

**State Data**  
More detail on page 14

**County of Riverside**  
More detail on page 17

**RCCD Dashboard**  
More detail on page 20

**Weather**  
More detail on page 21

**Air Quality**  
More detail on page 22

**News** – The collection of news articles are related to COVID-19. The inclusion or order of articles is not intended to reflect their importance, nor is it intended to endorse the political viewpoints or affiliations included in news coverage.

## Two years of COVID-19

- "This Sunday marks 2 years since I declared a Public Health Emergency of International Concern over the spread of COVID-19. At the time, there were fewer than 100 cases and no deaths reported outside China. On average last week, 100 cases were reported every 3 seconds" - Dr Tedros Adhanom Ghebreyesus, Director-General of the World Health Organization  
<https://fb.watch/aOaf1QiEdu/>

## 'Stealth Omicron' Subvariant Detected Across California

- The new subvariant of the omicron coronavirus variant, known as BA.2, was detected in California and was expected to spread quickly. The new subvariant was dubbed "stealth omicron" because its particular genetic traits make it somewhat harder to detect, and evidence suggested it will spread even more quickly than its infamous parent.
- California health officials had confirmed a total of 14 BA.2 cases spread out across the state as of Wednesday. BA.2 cases were identified in Los Angeles, Santa Clara, San Diego, Orange and Tulare counties.
- The new subvariant was not considered a variant of concern, according to the World Health Organization. In countries such as Denmark, where it quickly became the dominant variant, health officials have not seen an increase in COVID-19 hospitalizations or deaths.  
[https://patch.com/california/lakeelsinore-wildomar/s/i30xd/stealth-omicron-subvariant-detected-across-california?utm\\_source=alert-breakingnews&utm\\_medium=email&utm\\_campaign=alert](https://patch.com/california/lakeelsinore-wildomar/s/i30xd/stealth-omicron-subvariant-detected-across-california?utm_source=alert-breakingnews&utm_medium=email&utm_campaign=alert)  
RELATED

## Stealth omicron' is now in North Texas. Is it a new COVID variant? What we know.

<https://www.star-telegram.com/news/coronavirus/article257785748.html>

## Denmark 'could lift all' Covid-19 restrictions at end of January

- Prime Minister Mette Frederiksen is expected to announce that Danish Covid-19 restrictions will end on January 31st, according to reports.
- In addition to lifting restrictions, Frederiksen is expected to announce that Covid-19 will no longer be categorized as a critical threat to society. The classification, currently scheduled to expire on January 5th, is important because it impacts the ability of the government to introduce restrictions aimed at curbing spread of the virus.
- A Danish newspaper, Politiken, reports that the Commission cites a change in the nature of the Covid-19 epidemic in Denmark as justifying the end of restrictions while infection numbers are higher than at any previous time during the last two years.
- "We have a new epidemic situation where high and increasing transmissions do not transfer to admissions to hospitals to the same extent as before," the Commission said in its recommendations according to Politiken  
<https://www.thelocal.dk/20220125/denmark-could-lift-all-covid-19-restrictions-at-end-of-january/>

## Sweden decides against recommending COVID vaccines for kids aged 5-12

- "With the knowledge we have today, with a low risk for serious disease for kids, we don't see any clear benefit with vaccinating them," Health Agency official Britta Bjorkholm told a news conference.
- She added that the decision could be revisited if the research changed or if a new variant changed the pandemic. Kids in high-risk groups can already get the vaccine.  
<https://www.reuters.com/world/europe/sweden-decides-against-recommending-covid-vaccines-kids-aged-5-12-2022-01-27/>

## COVID hits one of the last uninfected places on the planet

- When the coronavirus began spreading around the world, the remote Pacific archipelago of Kiribati closed its borders, ensuring the disease didn't reach its shores for nearly two full years.
- Kiribati finally began reopening this month, allowing the Church of Jesus Christ of Latter-day Saints to charter a plane to bring home 54 of the island nation's citizens. Many of those aboard were missionaries who had left Kiribati before the border closure to spread the faith abroad for what is commonly known as the Mormon church.
- Officials tested each returning passenger three times in nearby Fiji, required that they be vaccinated, and put them in quarantine with additional testing when they arrived home.
- It wasn't enough. More than half the passengers tested positive for the virus, which has now slipped out into the community and prompted the government to declare a state of disaster. An initial 36 positive cases from the flight had ballooned to 181 cases by Friday.

[https://news.yahoo.com/covid-hits-one-most-remote-143516700.html?fr=sycsrp\\_catchall](https://news.yahoo.com/covid-hits-one-most-remote-143516700.html?fr=sycsrp_catchall)

## Mix-and-match trial finds additional dose of COVID-19 vaccine safe, immunogenic

- The new report describes findings from 458 adults who had been fully vaccinated with any of three EUA COVID-19 vaccines at least 12 weeks prior to enrollment and who had no reported history of SARS-CoV-2 infection.
- At enrollment, a single booster dose was administered to each participant: 150 received Janssen/Johnson & Johnson's vaccine, 54 received Moderna vaccine; and 154 received Pfizer-BioNTech's vaccine.
- Depending on which primary vaccine regimen a participant had received, the booster vaccine was either different (mixed, or heterologous) than or the same (matched, or homologous) as the original vaccine.
- All combinations of primary and booster vaccine resulted in increased neutralizing antibody levels (ranging from 4.2- to 76-fold higher levels than those detected prior to boost.)
- Likewise, all primary-boost combinations increased binding antibody levels 4.6- to 56-fold. For each primary EUA COVID-19 vaccine, heterologous boosts elicited similar or higher antibody responses as compared to responses to a homologous booster.
- Cellular responses (CD4 and CD8 T cell) also increased in all but the homologous boosted group, though CD8+ T cells were highest at baseline in those participants who had received the Janssen/Johnson & Johnson's vaccine.

<https://www.nih.gov/news-events/news-releases/mix-match-trial-finds-additional-dose-covid-19-vaccine-safe-immunogenic>

## Infographic: Endemic vs pandemic diseases

- Many experts expect COVID-19 will not be eradicated, and the disease will become endemic and stay with us, in a milder form.
- While the conditions to reclassify COVID-19 as endemic are not precisely defined, many countries – particularly in Europe – have begun lifting restrictions as they move towards living with the disease. Last week, Spanish Prime Minister Pedro Sanchez called on European officials to treat COVID-19 as endemic due to falling death rates.
- Endemic diseases are all around us, from the common cold to more severe diseases including HIV, malaria and tuberculosis.
- Epidemiologists, scientists who study the spread of diseases, consider a disease endemic when its levels are consistent and predictable. Endemic diseases are constantly present in a population within a particular region. For COVID-19 to become endemic, several factors would need to be considered, including how the disease continues to evolve as well as the type of immunity people acquire through infection and vaccines.

**HEALTH**

**Endemic vs pandemic diseases**

The World Health Organization (WHO) has said it is **too early to treat the coronavirus as endemic** as cases in parts of the world remain high.



**Endemic disease**

Is **constantly present** in a population within a particular region.

**Examples:**  
Influenza, malaria, HIV



**Pandemic disease**

A sudden spread across **multiple countries** affecting many people.

**Examples:**  
H1N1 (2009), Spanish flu (1918)

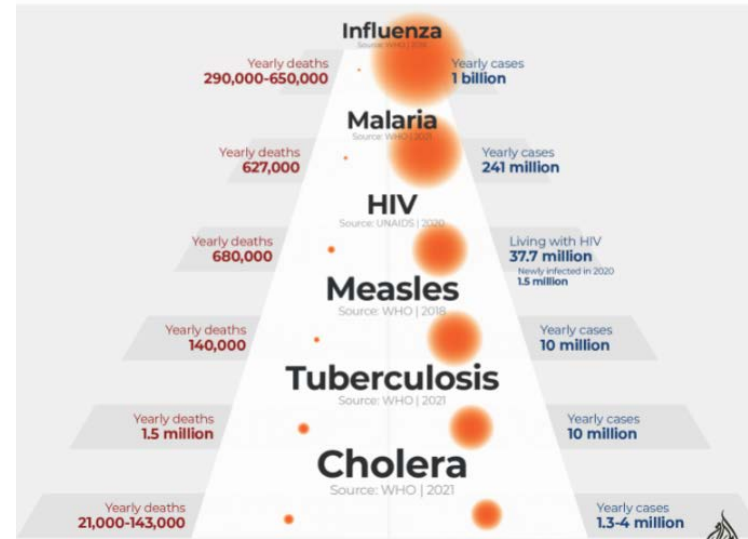
Source: WHO | January 24, 2022



**COVID-19**

**Comparing endemic diseases**

Endemic diseases are **constantly present** in a population within a particular region, making its spread more predictable.



Source: WHO | January 24, 2022

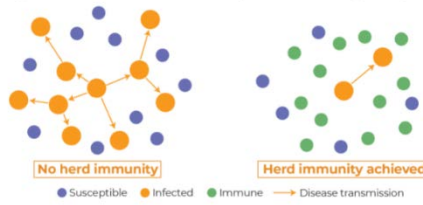


- The Omicron variant first detected in November 2021, has COVID-19 cases to record highs
- The WHO [predicts](#) more than half of the people in Europe could catch Omicron by March which, coupled with high vaccine rates, should lead to higher levels of immunity.

**COVID-19**

**Herd immunity**

Occurs when a **large portion of a community becomes immune** to a disease, through natural infection or vaccines, halting the disease from spreading.



**Herd immunity formula:**  $1 - \frac{1}{R_0}$

As variants become more infectious, the herd immunity threshold increases.

Original strain	$R_0$ : 2.5	$\Delta \delta$	$R_0$ : 6-7	$O_o$	$R_0$ : 10
	$1 - \frac{1}{2.5} = 60\%$		$1 - \frac{1}{6.5} = 85\%$		$1 - \frac{1}{10} = 90\%$

Source: The Lancet | January 24, 2022



<https://www.aljazeera.com/news/2022/1/24/covid-infographic-endemic-vs-pandemic-diseases>

**COVID-19**

**The dominant Omicron variant**

The **more transmissible variant**, first detected in November 2021, has been detected in **at least 165 countries and territories** worldwide.



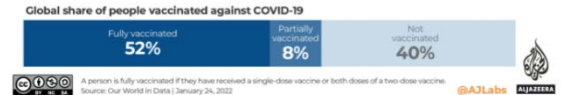
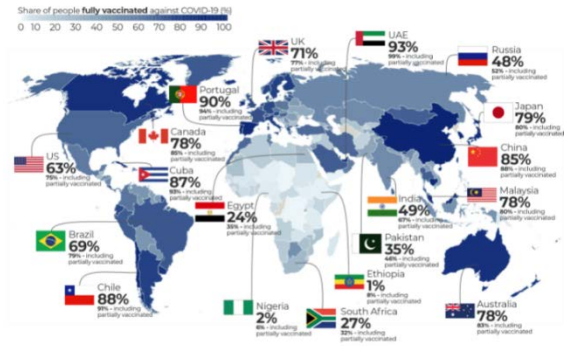
Source: WHO | January 24, 2022



**COVID-19**

**Global COVID vaccine divide**

Only **5 percent of people in low-income countries** are fully vaccinated.



Source: Our World in Data | January 24, 2022

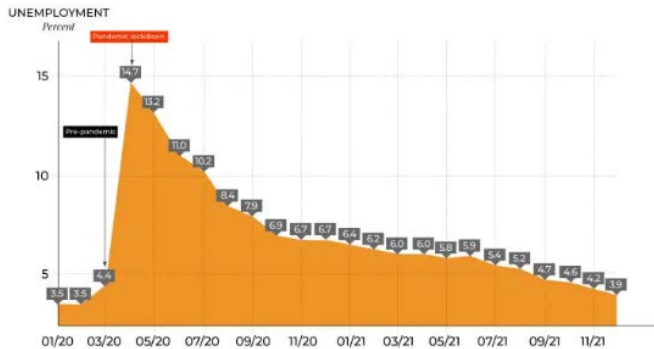
## Infographic: The US economy during Biden's first year in office

- Last month was the first time since the pandemic struck that the jobless rate dipped below 4 percent as it closed in on its pre-pandemic level of 3.5 percent from February 2020.
- But the economy only created a disappointing 199,000 jobs in December. For the whole of 2021, job growth averaged 537,000 a month. That leaves the US 3.6 million jobs shy of regaining all of the 22 million jobs lost in the opening months of the pandemic back in 2020.
- A record 4.5 million Americans voluntarily quit their jobs in November, signaling that workers feel very confident about their employment prospects. That's not surprising given job openings on the final day of November were also near a record high.
- To lure scarce job seekers, businesses have been boosting pay and sweetening benefits packages. That trend continued in December, with average hourly earnings for all employees on private nonfarm payrolls increasing 4.7 percent from a year ago.
- So even though the jobs market is recovering nicely, and workers are in a great bargaining position to secure better pay and benefits, mounting price pressures are making American feel less optimistic about the economy.

### UNITED STATES

## Unemployment rate

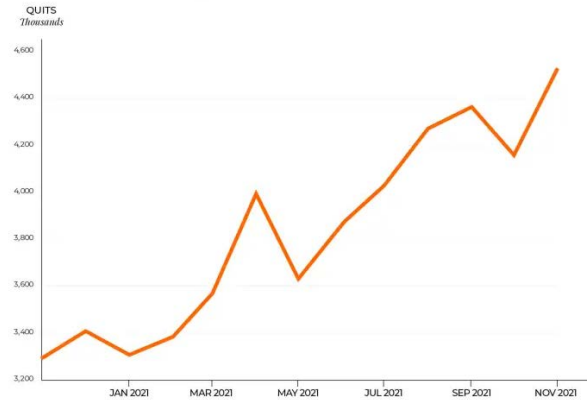
The US unemployment rate is steadily closing in on its pre-pandemic level of 3.5 percent.



### UNITED STATES

## Americans saying 'I quit'

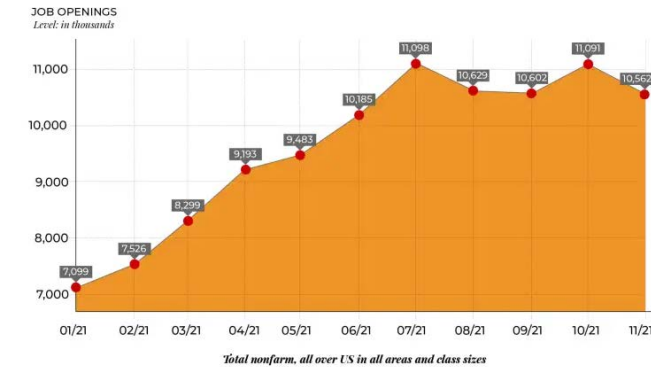
A record 4.5 million Americans voluntarily quit their jobs in November.



### UNITED STATES

## Job openings

Job creation has lagged because employers haven't been able to lure new workers to openings, even though job openings were at or near record highs in 2021.



### UNITED STATES

## Soaring inflation

There was plenty of sticker shock to go around in 2021, with prices US consumers pay surging throughout the year. Annualised consumer price inflation rose steadily last year. December saw the sharpest 12-month surge since June 1982.

12-month percent change in CPI for All Urban Consumers (CPI-U), not seasonally adjusted, Dec. 2020 - Dec. 2021

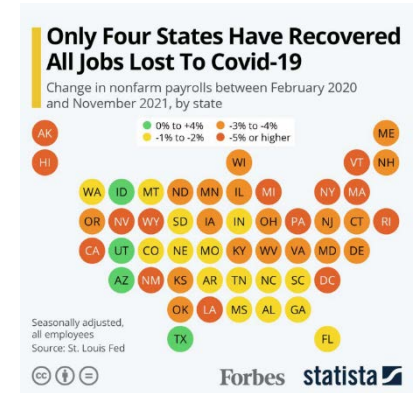
<https://www.aljazeera.com/economy/2022/1/20/infographic-the-us-economy-during-bidens-first-year-in-office>



## Only Four States Have Recovered All Jobs Lost To Covid-19 [Infographic]

- Despite Covid-19-induced lockdown measures not having been renewed in recent months, the effect of the pandemic on the U.S. economy is still lingering. As of November, only four states had reached pre-pandemic levels of employment.
- All four—Utah, Idaho, Texas and Arizona—have experienced population growth during the pandemic, in part explaining their quick recovery. According to The Wall Street Journal, lower cost of living and fewer coronavirus restrictions attracted companies and workers alike.
- According to the report, only a third of U.S. states is expected to reach pre-pandemic payroll numbers by mid-2022. Examining the number of nonfarm payrolls [published by the St. Louis Fed](#), these could be more states across the West and South that have the ability to attract employers as well as employees with the promise of a cheaper and less regulated environment.

<https://www.forbes.com/sites/katharinabuchholz/2022/01/21/only-four-states-have-recovered-all-jobs-lost-to-covid-19-infographic/?sh=5d36ac96720f>



## Can vitamins lessen your chance of contracting COVID-19?

- Not instead of vaccination and other protective measures. There is no miracle vitamin to protect you against COVID-19
- There is data linking vitamin D3 with lower risk of viral upper respiratory infections.
- In the pandemic there is association observational data that links people with low D3 levels with worse outcomes of COVID-19.

<https://www.goodmorningamerica.com/news/video/vitamins-lesser-chance-contracting-covid-19-82442924>

Related Studies

**COVID-19 Mortality Risk Correlates Inversely with Vitamin D3 Status, and a Mortality Rate Close to Zero Could Theoretically Be Achieved at 50 ng/mL 25(OH)D3: Results of a Systematic Review and Meta-Analysis**

<https://pubmed.ncbi.nlm.nih.gov/34684596/>

**Vitamin D and COVID-19: An Overview of Recent Evidence**

<https://www.ncbi.nlm.nih.gov/pmc/articles/PMC8509048/>

## CA Omicron Infections Dip As Hospitalizations Remain High

- California's omicron surge may have passed its peak in California as far as case numbers go. But hospitalizations, which tend to lag behind infections, remain astonishingly high.
- Hospitalizations related to COVID-19 in California hit a peak on Jan. 20 — 15,393 — but that number was still lower than the pinnacle of 22,000 patients in January 2021.
- Some 40 percent of the state's hospitals expected critical staff shortages, and some reported as much as one quarter of their staff out for virus-related reasons, said Kiyomi Burchill of the California Hospital Association.

<https://patch.com/california/lakeelsinore-wildomar/s/i2qzw/ca-omicron-infections-dip-as-hospitalizations-remain-high>

RELATED

## Omicron in California: U.S. coronavirus cases down nearly 20% but deaths up 25%

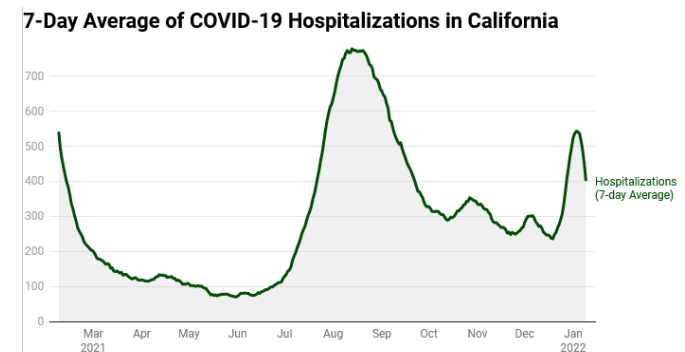
<https://www.sfchronicle.com/health/article/Omicron-in-California-Latest-news-and-updates-16811935.php>

Prepared by Justin Czerniak

[justin.czerniak@norccollege.edu](mailto:justin.czerniak@norccollege.edu)

Daily Situation Reports Archive

<https://www.norccollege.edu/sep/Pages/reports.aspx>



#### 4 symptoms that mean you'll likely get long COVID

- A new study published Tuesday in the [medical journal Cell](#) identified four factors that can be found early in coronavirus infections.
- These factors are often seen in people who later developed long-lasting COVID-19 symptoms.
- In fact, [the researchers said](#) there's a correlation between the factors and long-haul COVID, even if the infection was mild.
- "It's the first real solid attempt to come up with some biologic mechanisms for long Covid," said Dr. Steven Deeks, a professor of medicine at the University of California, San Francisco, told [The New York Times](#).
- "They've identified these four major factors," Deeks said. "Each is biologically plausible, consistent with theories that other people are pursuing, and importantly, each is actionable. If these pathways get confirmed, we as clinicians can actually design interventions to make people better. That is the take-home message."
- The four factors were listed as such:
  - The viral load in one's blood.
  - The presence of certain autoantibodies, which are often used to combat the virus and its symptoms.
  - The reactivation of the Epstein-Barr virus, which has been known to infect people at a young age.
  - The patient has Type 2 diabetes.

<https://www.deseret.com/coronavirus/2022/1/26/22902487/long-covid-symptoms-side-effects-factors>  
About Epstein-Barr Virus (EBV): <https://www.cdc.gov/epstein-barr/about-ebv.html>

## Global Data

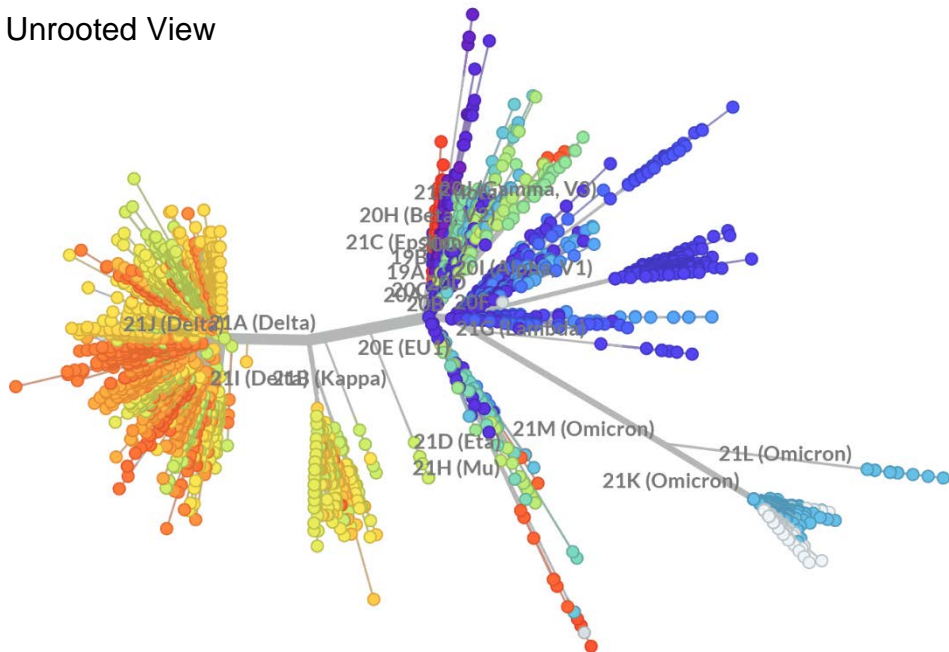
<https://nextstrain.org/ncov/gisaid/global>

## Genomic epidemiology of novel coronavirus - Global subsampling

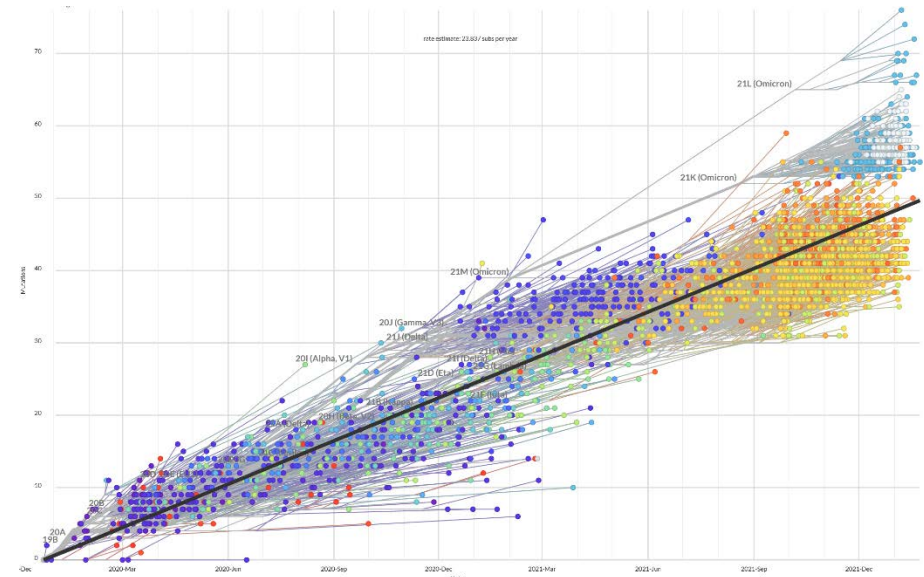
 Built with [nextstrain/ncov](#). Maintained by the [Nextstrain team](#). Enabled by data from .

Showing 3218 of 3218 genomes sampled between Dec 2019 and Jan 2022.

### Unrooted View



### Clock View





# U. S. Data

[https://covid.cdc.gov/covid-data-tracker/#cases\\_casesper100klast7days](https://covid.cdc.gov/covid-data-tracker/#cases_casesper100klast7days)

## United States COVID-19 Cases, Deaths, and Laboratory Testing (NAATs) by State, Territory, and Jurisdiction

Maps, charts, and data provided by CDC, updated Mon-Sat by 8 pm ET<sup>†</sup>

TOTAL CASES

73,512,366

+572,524 New Cases

7 DAY CASE RATE PER 100,000

1,218.2

TOTAL DEATHS

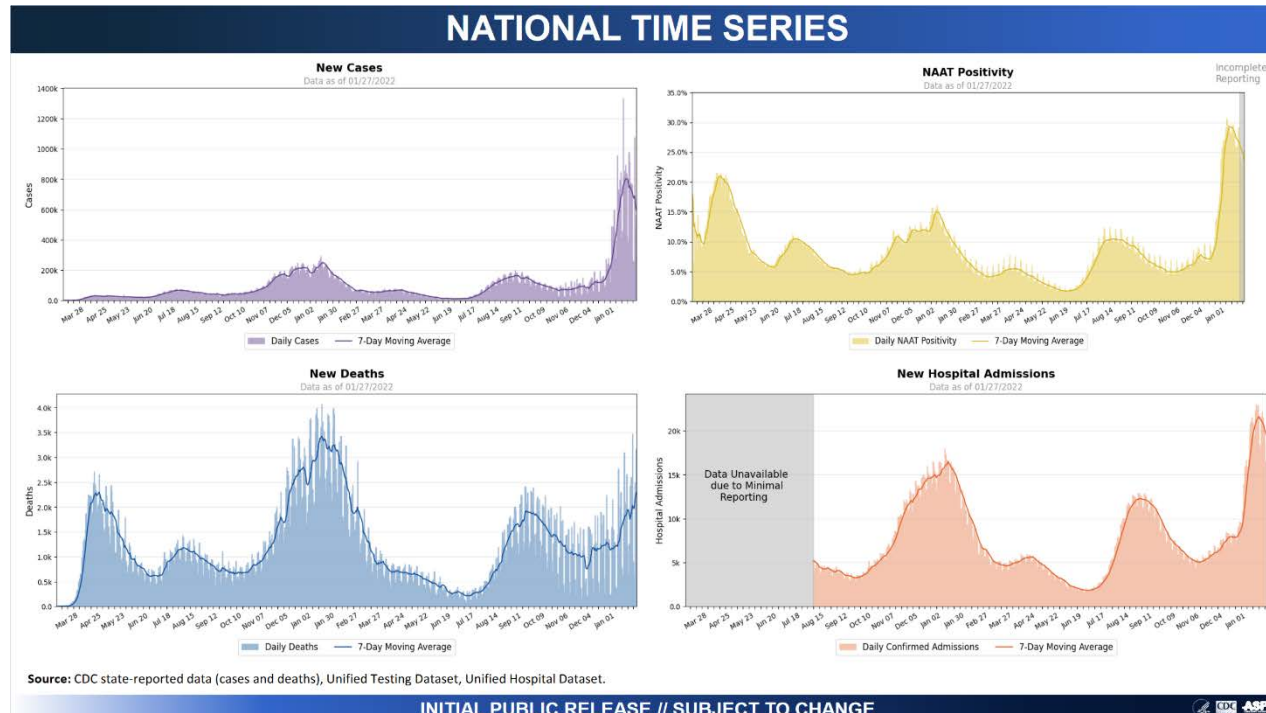
876,632

+2,625 New Deaths

CDC | Data as of: January 28, 2022 2:24 PM ET. Posted: January 28, 2022 3:54 PM ET

### COVID-19 Community Profile Report 01-20-2022

<https://beta.healthdata.gov/Health/COVID-19-Community-Profile-Report/gqxm-d9w9>

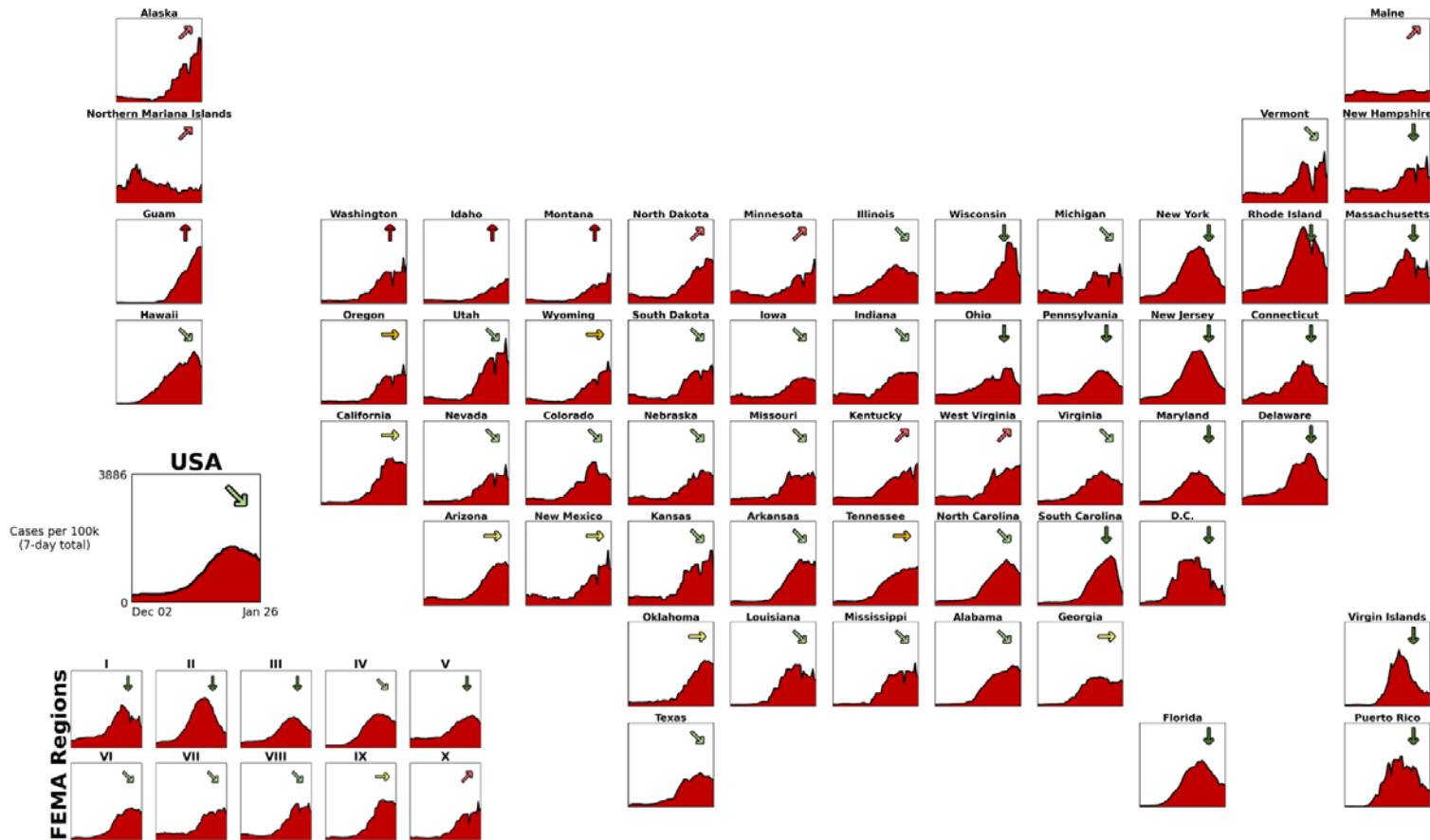


INITIAL PUBLIC RELEASE // SUBJECT TO CHANGE





# TRENDS IN CASE INCIDENCE DURING THE LAST 8 WEEKS



## Case incidence categories

(based on cases per 100,000 population in the last 7 days)

4 or less
5 - 9
10 - 49
50 - 99
100 - 199
200 or more

## Weekly % change categories

(arrow based on % change in weekly cases)

-26% or less	↓
-25% - -11%	↘
-10% - 0%	→
+1% - +10%	↗
+11% - +25%	↑
+26% or more	↗

Source: CDC state-reported data. See Data Sources/Methods slides for additional details.

INITIAL PUBLIC RELEASE // SUBJECT TO CHANGE



# Level of Community Transmission of COVID-19, by State/Territory

[https://covid.cdc.gov/covid-data-tracker/#cases\\_community](https://covid.cdc.gov/covid-data-tracker/#cases_community)

Cases Total **73,512,366**  
Last 30 Days

Deaths Total **876,632**  
Last 30 Days

79.9% of People 5+ with At Least One Vaccination

Community Transmission **High**

## United States COVID-19 Cases, Deaths, and Laboratory Testing (NAATs) by State, Territory, and Jurisdiction

Maps, charts, and data provided by CDC, updated Mon-Sat by 8 pm ET<sup>†</sup>

[View Footnotes and Download Data](#)

UNITED STATES LEVEL OF COMMUNITY TRANSMISSION

**High**

7 DAY CASE RATE PER 100,000

**1,218.2**

7 DAY PERCENT POSITIVITY

**23.4%**

CDC | Data as of: January 28, 2022 2:24 PM ET. Posted: January 28, 2022 3:54 PM ET

### Variant Proportions

<https://covid.cdc.gov/covid-data-tracker/#variant-proportions>



# COVID-19 By the Numbers

<https://www.cdc.gov/coronavirus/2019-ncov/cdcresponse/by-the-numbers.html>

## COVID-19 RESPONSE BY THE NUMBERS As of January 24, 2022



Accessible [www.cdc.gov/coronavirus/2019-ncov/cdcresponse/by-the-numbers.html](https://www.cdc.gov/coronavirus/2019-ncov/cdcresponse/by-the-numbers.html)

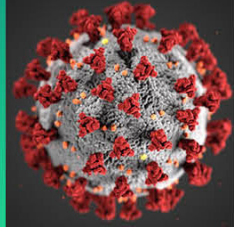
	<b>10,000</b>	CDC personnel supporting the outbreak response		<b>59.57+ million</b>	Times people have used CDC's online Coronavirus Self-Checker
	<b>1,895</b>	CDC deployers who have conducted <b>4,440</b> deployments to <b>353</b> cities across the United States and abroad		<b>1.6+ million</b>	Calls and emails to CDC-INFO
	<b>402</b>	COVID-19 studies published in CDC's Morbidity and Mortality Weekly Report (MMWR)		<b>3.8+ billion</b>	Times people have looked for information on CDC websites
	<b>9,827</b>	Documents providing information and guidance for government agencies, businesses, and the public		<b>4.7+ billion</b>	Social media impressions on <b>19,572</b> CDC response-related posts
	<b>766+ million</b>	COVID-19 tests conducted by public and private laboratories in the United States		<b>98,860+</b>	Inquiries from doctors, nurses, or other clinical staff and health departments received by CDC
	<b>250+ million</b>	People who have received at least one dose of a COVID-19 vaccine		<b>210+ million</b>	People who have been fully vaccinated with a COVID-19 vaccine

[cdc.gov/coronavirus](https://www.cdc.gov/coronavirus)

CS31665-A

## COVID-19 Science Update

# COVID-19 Science Update



<https://www.cdc.gov/library/covid19/scienceupdates.html?Sort=Date%3A%3Adesc>

As of December 18, 2021, CDC has paused production of the weekly COVID-19 Science Update. We anticipate that production will resume in 2022.

[COVID-19 Science Update released: December 17, 2021 Edition 117](#)

[COVID-19 Science Update released: December 10, 2021 Edition 116](#)

## CDC What's New & Updated

<https://www.cdc.gov/coronavirus/2019-ncov/whats-new-all.html>

- [1/28/22 Cases in the U.S.](#)
- [1/28/22 Overall US COVID-19 Vaccine Distribution and Administration Update as of Fri, 28 Jan 2022 06:00:00 EST](#)
- [1/27/22 COVID-19 Guidance for Operating Early Care and Education/Child Care Programs](#)
- [1/27/22 Staffing Resources](#)
- [1/27/22 COVID-19 Vaccines While Pregnant or Breastfeeding](#)
- [1/27/22 Interim Guidance for Case Investigation and Contact Tracing in K-12 Schools](#)
- [1/27/22 COVID Data Tracker Weekly Review](#)
- [1/27/22 Schools and Childcare Programs](#)
- [1/27/22 Effectiveness of a Third Dose of Pfizer-BioNTech and Moderna Vaccines in Preventing COVID-19 Hospitalization Among Immunocompetent and Immunocompromised Adults — United States, August–December 2021](#)
- [1/27/22 Trends in Disease Severity and Health Care Utilization During the Early Omicron Variant Period Compared with Previous SARS-CoV-2 High Transmission Periods — United States, December 2020–January 2022](#)
- [1/27/22 Effectiveness of a Third Dose of mRNA Vaccines Against COVID-19–Associated Emergency Department and Urgent Care Encounters and Hospitalizations Among Adults During Periods of Delta and Omicron Variant Predominance — VISION Network, 10 States, August 2021–January 2022](#)
- [1/27/22 COVID-19 Incidence and Death Rates Among Unvaccinated and Fully Vaccinated Adults with and Without Booster Doses During Periods of Delta and Omicron Variant Emergence — 25 U.S. Jurisdictions, April 4–December 25, 2021](#)
- [1/27/22 COVID-19 Cases and Hospitalizations by COVID-19 Vaccination Status and Previous COVID-19 Diagnosis — California and New York, May–November 2021](#)
- [1/26/22 Non-U.S. citizen, Non-U.S. immigrants: Air Travel to the United States](#)
- [1/26/22 Requirement for Proof of COVID-19 Vaccination for Air Passengers](#)
- [1/26/22 International Travel](#)

## **CDC Guidance**

<https://www.cdc.gov/coronavirus/2019-ncov/communication/guidance-list.html?Sort=Date%3A%3Adesc>

### [COVID-19 Guidance for Operating Early Care and Education/Child Care Programs](#)

See COVID-19 guidance for operating early care and education/child care programs including mask use, physical distancing, and ventilation. (138) Date: 1/27/22

### [Considerations for Case Investigation and Contact Tracing in K-12 Schools and Institutions of Higher Education \(IHEs\)](#)

Learn what administrators of K-12 schools and institutions of higher education should know about COVID-19 case investigation and contact tracing. Date: 1/27/22

### [Public Health Guidance for Potential COVID-19 Exposure Associated with Travel](#)

Find detailed guidance for public health officials about possible COVID-19 travel exposure, risk assessments, and other technical considerations. Date: 1/26/22

### [Interim Guidelines for COVID-19 Antibody Testing](#)

CDC has developed interim guidance for how healthcare providers, laboratories, and public health staff should use antibody tests for COVID-19. These tests look for the presence of antibodies, which are specific proteins made in response to infections. Date: 1/23/22

### [Guidance for General Laboratory Safety Practices during the COVID-19 Pandemic](#)

This guidance addresses general safety concerns for laboratory personnel during the COVID-19 pandemic. It includes recommendations for risk assessments, health and safety plans, social distancing, face coverings, disinfection, and personal hygiene. Date: 1/20/22

### [Interim Guidelines for COVID-19 Antibody Testing](#)

CDC has developed interim guidance for how healthcare providers, laboratories, and public health staff should use antibody tests for COVID-19. These tests look for the presence of antibodies, which are specific proteins made in response to infections. Date: 1/20/22

### [Strategies to Mitigate Healthcare Personnel Staffing Shortages](#)

Healthcare facilities, learn how to best mitigate staff shortages that may occur during COVID-19. Date: 1/20/22

### [Interim Guidance for Managing Healthcare Personnel with SARS-CoV-2 Infection or Exposure to SARS-CoV-2](#)

Find CDC's guidance on assessing, monitoring, and restricting risk for those who work in healthcare facilities during COVID-19. Date: 1/20/22

### [Interim Guidance for Antigen Testing for SARS-CoV-2](#)

Proper interpretation of antigen test results is important for accurate clinical management of patients with suspected COVID-19. This guidance can help healthcare providers make the most effective use of antigen tests in different situations. Date: 1/19/22



# State Data

<https://covid19.ca.gov/>



Office of Governor  
**GAVIN NEWSOM**



## Get at-home COVID-19 tests for free

You can now get 4 free at-home tests shipped to you by the U.S. government. Limit is one shipment per household.

<https://special.usps.com/testkits>

Press Releases, Executive Orders,  
Media Advisories, and Proclamations.

<https://www.gov.ca.gov/newsroom/>

## Tracking COVID-19

<https://update.covid19.ca.gov/#top>  
<https://www.cdph.ca.gov/Programs/CID/DCDC/Pages/Immunization/ncov2019.aspx#>  
<https://www.cdph.ca.gov/Programs/CID/DCDC/Pages/COVID-19/CovidDataAndTools.aspx>

## Safely reopening California

<https://covid19.ca.gov/safely-reopening/>

## California Healthy Places Index

<https://covid19.healthyplacesindex.org/>  
<https://map.healthyplacesindex.org/>

## CDPH Statewide Guidance

<https://www.cdph.ca.gov/Programs/CID/DCDC/Pages/Guidance.aspx>

## Data models

<https://covid19.ca.gov/data-and-tools/>

## Cal/OSHA

<https://www.dir.ca.gov/dosh/>  
<https://www.dir.ca.gov/dosh/COVID19citations.html>  
<https://www.dir.ca.gov/oshab/oshab.html>

## Vaccines

<https://covid19.ca.gov/vaccines/>  
<https://myturn.ca.gov/>

## News Releases

<https://www.cdph.ca.gov/Programs/OPA/Pages/News-Releases-2021.aspx>

# Update for January 28, 2022



# Vaccinations administered in California, by county of residence.

<https://covid19.ca.gov/vaccination-progress-data/>

## Statewide

**27,476,629 (72.9%) People 5+ fully vaccinated**  
**3,337,380 (8.9%) People 5+ partially vaccinated**

**69,152,754 (85.2%) Doses administered**  
**122,422 Average doses per day**

**12,723,983 (53.3%) Booster recipients**



**5,256,461 Doses on hand**  
**(43 days of inventory)**

**81,156,585 Doses Delivered**



**32,322,900 CDC Pharmacy Doses Delivered**

See [Data Dictionary](#) for Details.

## Doses Administered by County of Residence

County

(All) ▼



Los Angeles	17,849,096
San Diego	6,188,018
Orange	5,698,993
Santa Clara	4,199,720
Riverside	3,454,029
Alameda	3,392,565
San Bernardino	2,899,339
Sacramento	2,532,640
Contra Costa	2,361,987
San Francisco	1,923,217
San Mateo	1,656,160
Ventura	1,478,985
Fresno	1,439,830
San Joaquin	1,118,387
Kern	1,106,783
Sonoma	976,694
Santa Barbara	751,180
Monterey	745,746
Stanislaus	745,719
Solano	728,791

Data: 1/27/2022 11:59pm | Posted: 1/28/2022

\* Data not reported on weekends or state holidays.

<https://covid19.ca.gov/state-dashboard/#postvax-status>

## Regional ICU Capacity

<https://www.cdph.ca.gov/Programs/CID/DCDC/Pages/COVID-19/Regional-ICU-Capacity.aspx>

### Regional ICU Capacity (Data as of 1/27/2022)

Region	% of Staffed Adult ICU Beds Available	% COVID+ in Adult ICU Beds	Number of Consecutive Days Under 10 % *	Date Health Order Effective	Date Health Order Set to Expire **
California Statewide	16.1	42	--	--	--
Bay Area	16.2	32.9	--	--	--
Greater Sacramento	11.5	35.4	--	--	--
Northern California	16.8	31.7	--	--	--
San Joaquin Valley	9.7	48.5	3	1/28/2022	2/3/2022
Southern California	17.7	44.9	--	--	--

\* Must be under 10% for 3 consecutive days to trigger Health Order.

\*\* The region will be reevaluated seven days from the date the Health Order was triggered.

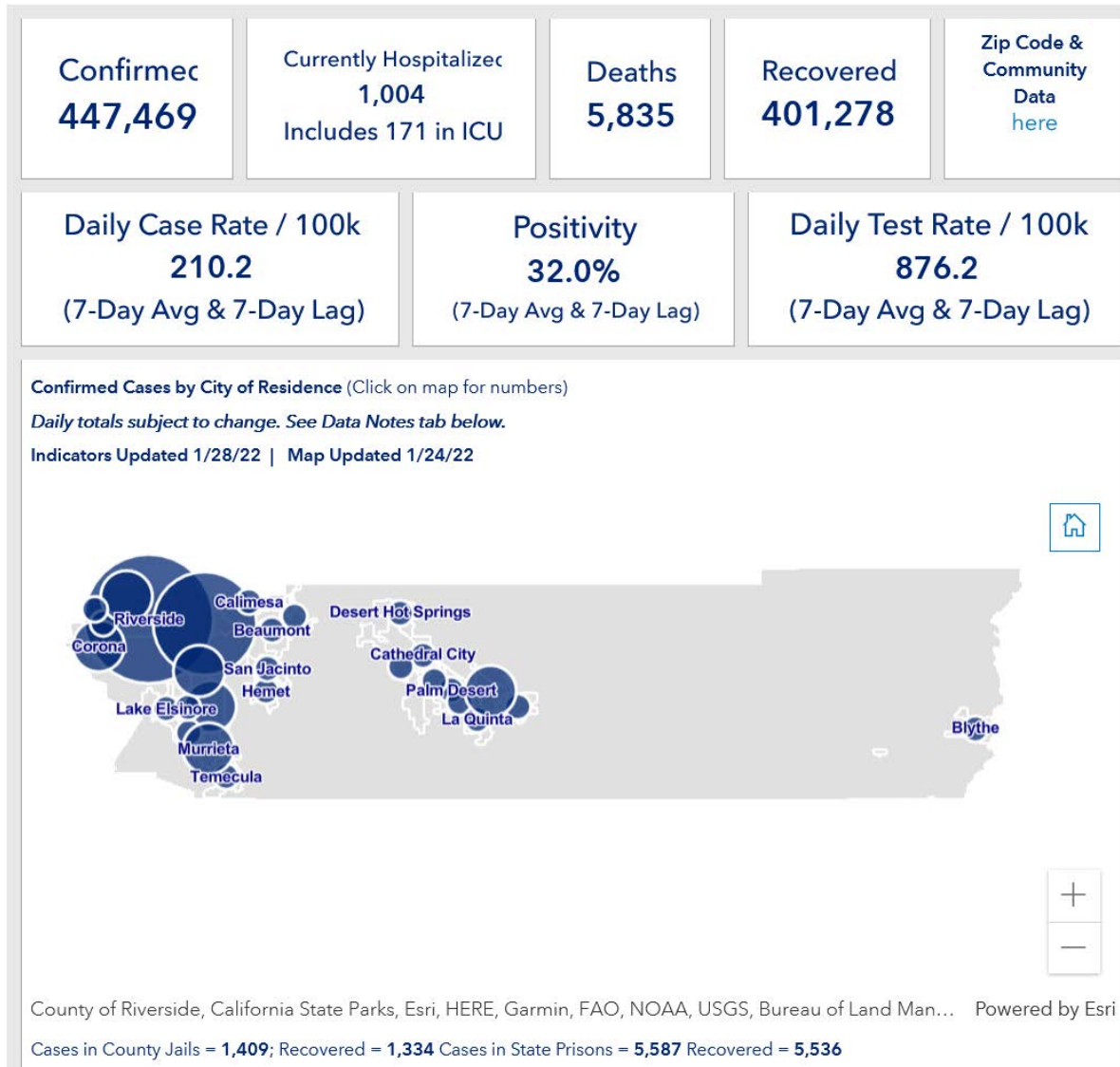




# Riverside County Data

<https://www.rivcoph.org/coronavirus>

Dashboard -Click [here](#) for more detailed city/community data and reports

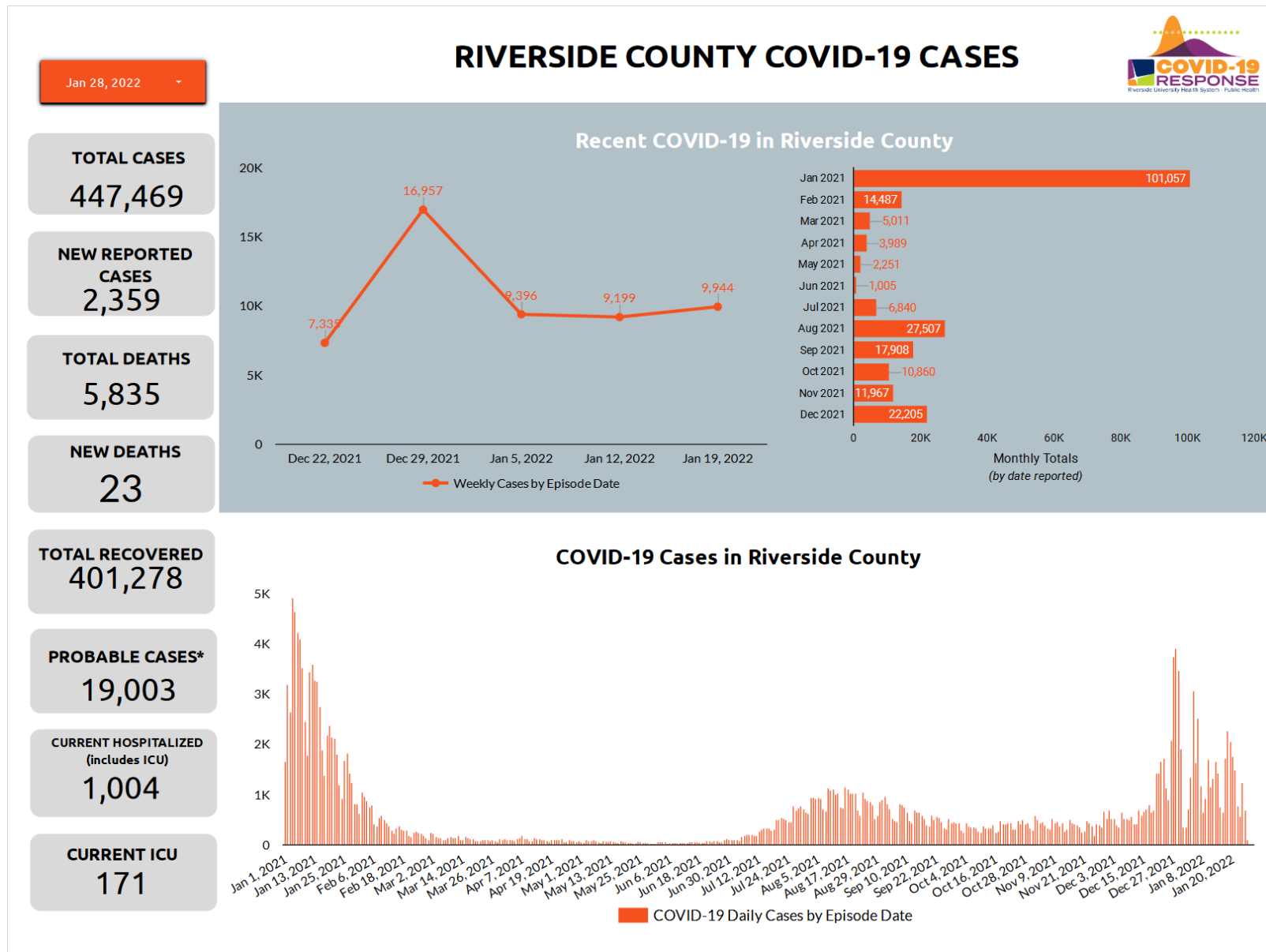


## RUHS Public Health News:

- Death of infant caused by COVID-19 infection, Riverside County health officials report [English](#) / [Spanish](#)
- Health officials in Riverside County report first case of Omicron variant [English](#) / [Spanish](#)
- [RUHS Public Health: Guidance on the use of masks in CA 12.14.21](#)
- Pfizer vaccine doses for children between 5-11 years old to be made available in Riverside County [English](#) / [Spanish](#)
- Booster for Moderna, Johnson & Johnson to be available in Riverside County starting Tuesday [English](#) / [Spanish](#)
- Booster vaccine doses available in Riverside County from Public Health and community partners [English](#) / [Spanish](#)
- Health officials confirm death of 4-year-old is COVID-19 related [English](#) / [Spanish](#)

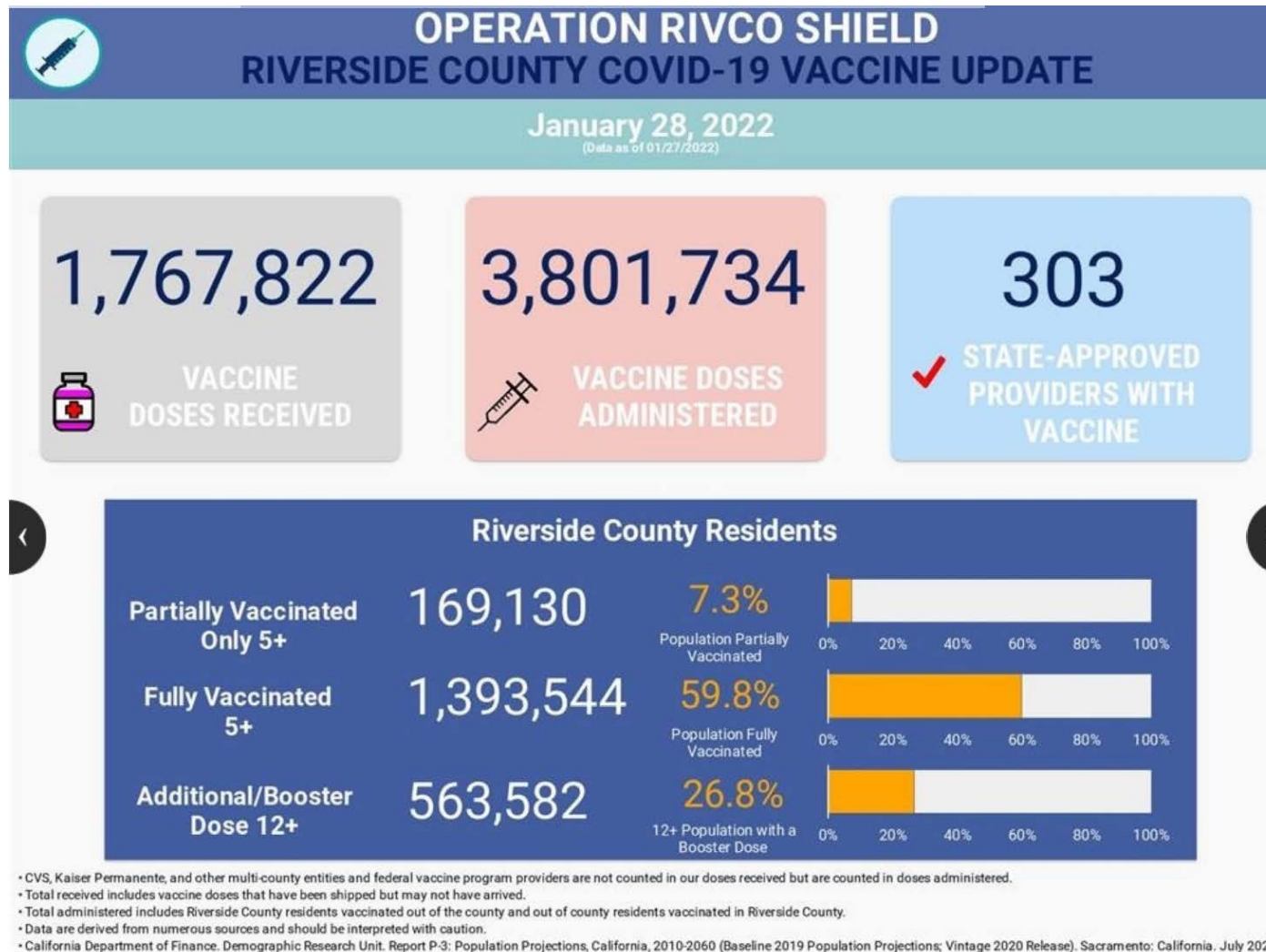
# RIVERSIDE COUNTY DAILY COVID-19 REPORT

<https://www.rivcoph.org/Portals/0/Documents/CoronaVirus/Reports/DailyEpidemiologySummary.pdf?x=1642802845000>



**RUHS Public Health:**

- [Pfizer Covid Vaccine Updated EUA – October 20, 2021](#)
- [Fact Sheet for Healthcare Providers Administering Vaccine \(Vaccination Providers\) Emergency Use Authorization \(EUA\) of the Pfizer-Biontech Covid-19 Vaccine to Prevent Coronavirus Disease 2019 \(Covid-19\) – October 20, 2021](#)
- [Fact Sheet for Recipients and Caregivers Emergency Use Authorization \(EUA\) of the Pfizer-Biontech Covid-19 Vaccine to Prevent Coronavirus Disease 2019 \(Covid-19\) in Individuals 12 Years of Age and Older – October 20, 2021](#)



# RCCD COVID-19 Dashboard

<https://www.rccd.edu/return/Pages/Cases.aspx>

1/21/2022

CA/RIVCO Update Date



## California/Riverside County/RCCD COVID-19 Data

	Total Tests	Total COVID-19 Reported Cases	Total Positive Rate	Last 7-Day COVID19 Cases	Last 7-Day Pos Rate
<b>California</b>	134,292,947	7,123,571	6.9%	524,767	19.8%
<b>RIVCO</b>	5,509,364	513,567	12.0%	33,386	30.8%
<b>RCCD</b>	24,012	753	6.3%	135	19.5%

1/21/2022  
Cases Updated

1/21/2022  
Rate Updated

Data for California and Riverside County is populated from California Health and Human Services Open Data Portal (update cycle 1/week) and data for RCCD is derived from Cleared4 testing numbers

<https://data.chhs.ca.gov/dataset/covid-19-time-series-metrics-by-county-and-state>

# Weather

<https://www.weather.gov/forecastpoints#>

Latest hazard threat table: <https://www.wrh.noaa.gov/sqx/event/dsstable.php>

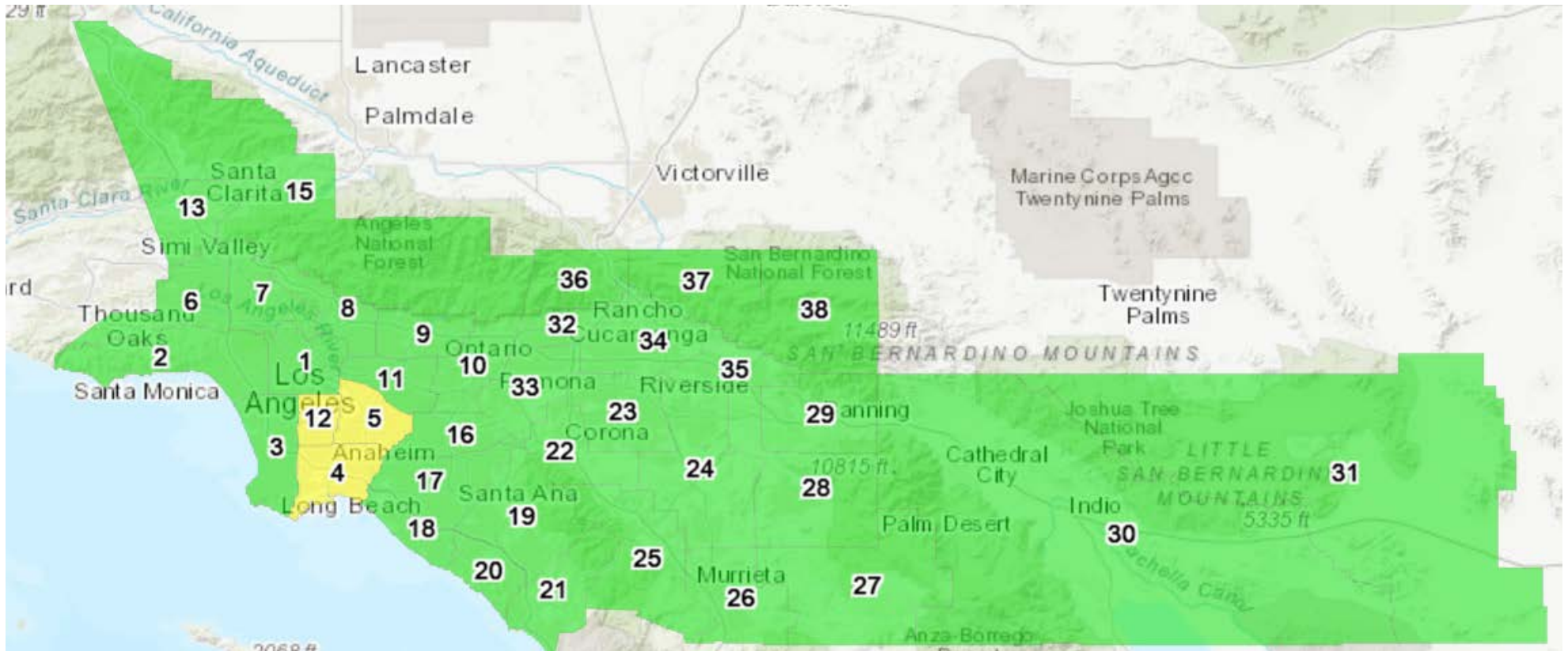
	Fri 1/28	Sat 1/29	Sun 1/30	Mon 1/31	Tue 2/1	Wed 2/2	Thu 2/3
<b>Orange/San Diego Beaches</b>	Wind					Wind Elevated Surf Rip Currents	
<b>San Diego Coast</b> San Diego, La Jolla, Oceanside	Wind						
<b>San Diego Valleys</b> Alpine, Escondido, Ramona	Wind Low RH	Wind Low RH					
<b>San Diego County Mtns</b> Mt Laguna, Julian, Palomar Mt	Wind Low RH	Wind Low RH			Wind	Wind	
<b>San Diego Deserts</b> Anza Borrego, Ocotillo Wells							
<b>Orange County Coast</b> Laguna and Huntington Beaches	Wind						
<b>Orange County Inland</b> Anaheim, Irvine, Yorba Linda	Wind Low RH				Wind	Wind	
<b>Santa Ana Mountains</b> Silverado, Santiago Peak	Wind Low RH				Wind	Wind	
<b>Inland Empire</b> Ontario, Riverside, Temecula	Wind Low RH				Wind	Wind	
<b>Riverside County Mtns</b> Mt San Jacinto, Idyllwild	Wind Low RH				Wind	Wind	
<b>Coachella Valley</b> Palm Springs, Indio					Wind	Wind	
<b>San Bernardino Mtns</b> Wrightwood, Big Bear	Wind Low RH				Wind	Wind	
<b>High Deserts</b> Victorville, Lucerne Valley					Wind	Wind	

<b>Risk Levels</b>	<b>Little to None</b>	<b>Minor</b>	<b>Moderate</b>	<b>Major</b>	<b>Extreme</b>
--------------------	-----------------------	--------------	-----------------	--------------	----------------



# Today's Forecast

<https://www.arcgis.com/apps/webappviewer/index.html?id=85c7770bac684749a631bd7b42eac1b7>



## Legend



The Air Quality Index (AQI) is an index for reporting daily air quality that conveys how air pollution can affect public health. The AQI is divided into six levels of health concern:

### AQI Value

- Hazardous (301-500)
- Very Unhealthy (201-300)
- Unhealthy (151-200)
- Unhealthy for Sensitive Groups (101-150)
- Moderate (51-100)
- Good (0-50)