



**\*\*Extraordinary Assumptions:** There are many different data sources in this report and not all of them match. The goal is to provide an overall picture of the current situation.

# Daily Situation Summary

## Thursday, July 22, 2021

### As of 11:00 AM

#### COVID-19 by the Numbers

7/22/2021	Riverside	Imperial	Kern	Los Angeles*	Orange	San Bernardino	San Diego	San Luis Obispo	Santa Barbara	Ventura	California	United States	Global
Total Cases	304,060	28,651	112,063	1,273,551	259,985	303,350	288,681	21,717	35,116	82,734	3,857,468	34,248,054	191,146,056
New Cases	1,991	0	169	2,372	290	184	473	0	64	150	7,987	55,132	404,831
Total Cases Per Capita	12,319	14,950	12,086	12,416	8,053	13,680	8,565	7,788	7,695	9,702	9,613	10,305	2,462
New Cases Per Capita	80.67	0.00	18.23	23.12	8.98	8.30	14.03	0.00	14.02	17.59	19.90	16.59	5.21
Recovered	<a href="#">297,001</a>	<a href="#">25,815</a>	<a href="#">40,887</a>	<a href="#">Not Reported</a>	<a href="#">250,753</a>	<a href="#">295,946</a>	<a href="#">Not Reported</a>	<a href="#">21,319</a>	<a href="#">34,684</a>	<a href="#">81,153</a>	<a href="#">2,086,136</a>	<a href="#">29,458,707</a>	<a href="#">175,550,658</a>
Total Deaths	4,657	745	1,416	24,594	5,136	4,836	3,786	264	459	1,033	63,289	607,684	4,109,303
New Deaths	10	0	0	6	0	0	0	0	0	0	30	406	10,285
Deaths Per Capita	188.68	388.73	152.71	239.76	159.08	218.09	112.33	94.67	100.58	121.14	157.71	182.85	52.93
% of State's Cases	7.88%	0.74%	2.91%	33.02%	6.74%	7.86%	7.48%	0.56%	0.91%	2.14%	11.26%	17.92%	
Currently in Hospitals	160	13	58	655	149	156	196	4	25	42	2,405		
Total Hospital Beds	3,356	236	1,159	19,216	5,887	3,602	6,495	460	603	1,154	66,189		
Currently in ICU	32	1	12	183	39	32	43	1	5	8	575		
ICU Beds Available	83	11	35	585	165	155	243	20	32	45	2,066		
Case Fatality Rate	1.53%	2.60%	1.26%	1.93%	1.98%	1.59%	1.31%	1.22%	1.31%	1.25%	1.64%	1.77%	2.15%
Population*	2,468,145	191,649	927,251	10,257,557	3,228,519	2,217,398	3,370,418	278,862	456,373	852,747	40,129,160	332,345,359	7,763,643,000
% of Population	6.15%	0.48%	2.31%	25.56%	8.05%	5.53%	8.40%	0.69%	1.14%	2.13%	12.07%	4.28%	

Sources: CDPH, WHO, CDC, Local County Data, LA Times

The date for which case statistics and hospital data were reported. Hospital COVID data are self-reported through a portal managed by the California Hospital Association and pulled at 2pm. COVID case statistics are reported by local health departments to CalREDIE and are pulled at 2pm. Hospital data and case statistics are integrated by the California Department of Technology and made available through the Open Data Portal the following morning. CA Open Data Portal is at least 24 Hours behind although a backlog of new case reports at the State level has ostensibly been cleared, some County dashboards still contain notes that indicate data are missing. \*California Demographics from State Database Blueprint Data Chart 12-15-20 & census.gov . Presumptive active cases - A calculation (Total Cases - Recovered - Dead) (\* a Lot of County sites are not report recovery rates and if they do most are only updating on Wednesdays)

#### News

More detail on page 2

#### US Data

More detail on page 3

#### State Data

More detail on page 10

#### County of Riverside

More detail on page 12

#### Weather

More detail on page 15

#### Air Quality

More detail on page 16

**News** – The collection of news articles is related to COVID-19. The inclusion or order of articles is not intended to reflect their importance, nor is it intended to endorse the political viewpoints or affiliations included in news coverage.

### **Conservative hostility to Biden vaccine push surges with Covid cases on the rise**

<https://news.yahoo.com/conservative-hostility-biden-vaccine-push-083015346.html>

### **Experimental vaccine protects against multiple coronaviruses**

- By combining parts of spike proteins from different coronaviruses, researchers developed an mRNA vaccine that protected mice against a range of coronaviruses.
- The results point the way toward a universal coronavirus vaccine that could prevent future pandemics.

<https://www.nih.gov/news-events/nih-research-matters/experimental-vaccine-protects-against-multiple-coronaviruses>

### **More Genetic Clues to COVID-19 Susceptibility and Severity**

<https://directorsblog.nih.gov/2021/07/20/more-genetic-clues-to-covid-19-susceptibility-and-severity/>

### **Mask mandates make a return - along with controversy**

<https://news.yahoo.com/mask-mandates-return-along-controversy-004309392.html>

### **COVID-19 Vaccine Outreach to Minors in Tennessee Comes to a Halt**

[https://www.campussafetymagazine.com/news/covid-19-vaccine-outreach-to-minors-in-tennessee-comes-to-a-halt/?utm\\_source=newsletter&utm\\_medium=email&utm\\_campaign=content&utm\\_source=email&utm\\_medium=mc&utm\\_campaign=145038](https://www.campussafetymagazine.com/news/covid-19-vaccine-outreach-to-minors-in-tennessee-comes-to-a-halt/?utm_source=newsletter&utm_medium=email&utm_campaign=content&utm_source=email&utm_medium=mc&utm_campaign=145038)

### **Chico State Students File Lawsuit Over COVID-19 Vaccine Requirement**

[https://www.campussafetymagazine.com/news/chico-state-students-file-lawsuit-over-covid-19-vaccine-requirement/?utm\\_source=newsletter&utm\\_medium=email&utm\\_campaign=content&utm\\_source=email&utm\\_medium=mc&utm\\_campaign=145038](https://www.campussafetymagazine.com/news/chico-state-students-file-lawsuit-over-covid-19-vaccine-requirement/?utm_source=newsletter&utm_medium=email&utm_campaign=content&utm_source=email&utm_medium=mc&utm_campaign=145038)

### **US jobless claims unexpectedly rise to 419,000, most since March**

<https://www.aljazeera.com/economy/2021/7/22/us-jobless-claims-unexpectedly-rise-to-419000-most-since-march>

### **More than 1.5 million children lost a primary or secondary caregiver due to the COVID-19 pandemic**

<https://www.nih.gov/news-events/news-releases/more-15-million-children-lost-primary-or-secondary-caregiver-due-covid-19-pandemic>

### **UC requires COVID-19 vaccinations for all; will bar unvaccinated students without approved exemptions**

[https://covid.cdc.gov/covid-data-tracker/#cases\\_casesper100klast7days](https://covid.cdc.gov/covid-data-tracker/#cases_casesper100klast7days)

### **RivCo OKs Security Cost For 3 Motels Housing Homeless With COVID**

[https://patch.com/california/lakeelsinore-wildomar/s/hombb/rivco-oks-security-cost-for-3-motels-housing-homeless-with-covid?utm\\_term=article-slot-1&utm\\_source=newsletter-daily&utm\\_medium=email&utm\\_campaign=newsletter](https://patch.com/california/lakeelsinore-wildomar/s/hombb/rivco-oks-security-cost-for-3-motels-housing-homeless-with-covid?utm_term=article-slot-1&utm_source=newsletter-daily&utm_medium=email&utm_campaign=newsletter)



# U. S. Data

[https://covid.cdc.gov/covid-data-tracker/#cases\\_casesper100klast7days](https://covid.cdc.gov/covid-data-tracker/#cases_casesper100klast7days)

## United States COVID-19 Cases and Deaths by State

Maps, charts, and data provided by CDC, updates daily by 8 pm ET<sup>†</sup>



<https://covid.cdc.gov/covid-data-tracker/#vaccinations>

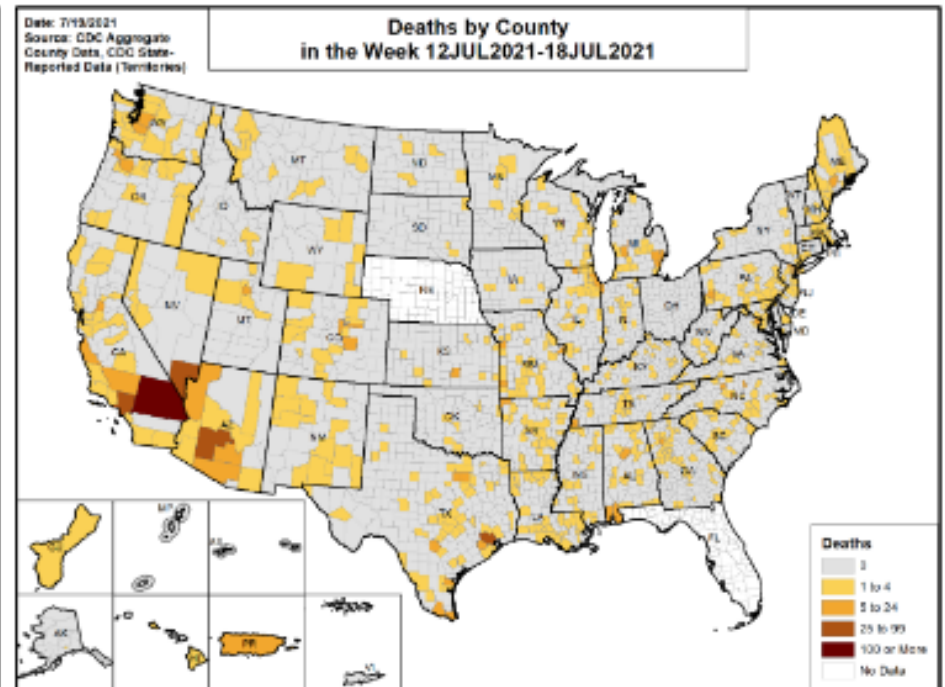
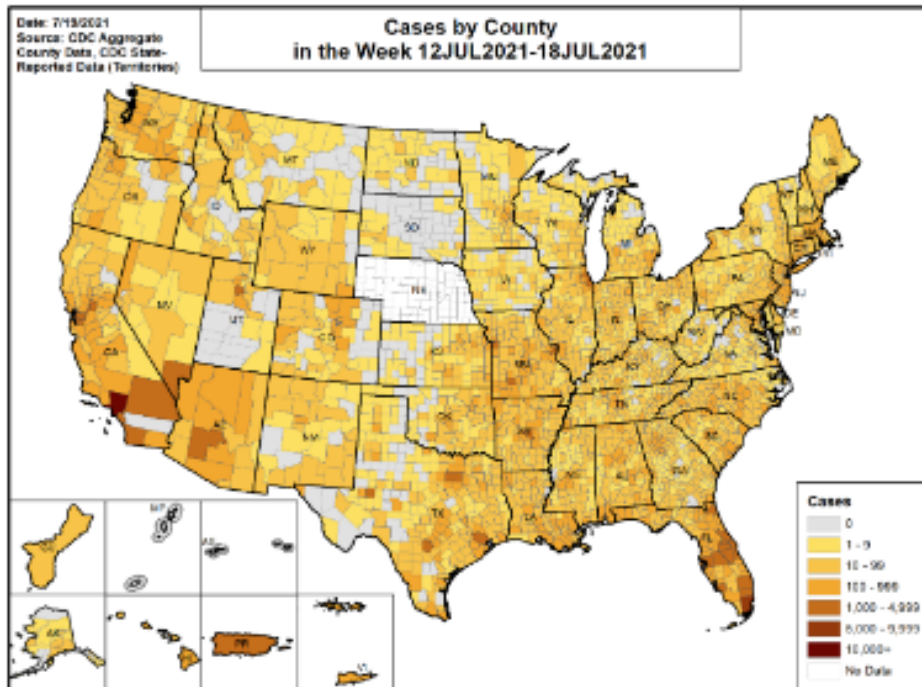
## COVID-19 Vaccinations in the United States

<p><b>Total Vaccine Doses</b></p> <p>Delivered <b>391,248,955</b></p> <p>Administered <b>339,102,867</b></p> <p><b>Learn more about the distribution of vaccines.</b></p>	<p><b>161.9M</b></p> <p>People fully vaccinated</p>	<table border="1"> <thead> <tr> <th>People Vaccinated</th> <th>At Least One Dose</th> <th>Fully Vaccinated</th> </tr> </thead> <tbody> <tr> <td>Total</td> <td>186,819,440</td> <td>161,895,045</td> </tr> <tr> <td>% of Total Population</td> <td>56.3%</td> <td>48.8%</td> </tr> <tr> <td>Population ≥ 12 Years of Age</td> <td>186,597,197</td> <td>161,765,990</td> </tr> <tr> <td>% of Population ≥ 12 Years of Age</td> <td>65.8%</td> <td>57.1%</td> </tr> <tr> <td>Population ≥ 18 Years of Age</td> <td>176,729,812</td> <td>154,028,105</td> </tr> <tr> <td>% of Population ≥ 18 Years of Age</td> <td>68.4%</td> <td>59.6%</td> </tr> <tr> <td>Population ≥ 65 Years of Age</td> <td>48,767,745</td> <td>43,507,032</td> </tr> <tr> <td>% of Population ≥ 65 Years of Age</td> <td>89.2%</td> <td>79.5%</td> </tr> </tbody> </table>	People Vaccinated	At Least One Dose	Fully Vaccinated	Total	186,819,440	161,895,045	% of Total Population	56.3%	48.8%	Population ≥ 12 Years of Age	186,597,197	161,765,990	% of Population ≥ 12 Years of Age	65.8%	57.1%	Population ≥ 18 Years of Age	176,729,812	154,028,105	% of Population ≥ 18 Years of Age	68.4%	59.6%	Population ≥ 65 Years of Age	48,767,745	43,507,032	% of Population ≥ 65 Years of Age	89.2%	79.5%
People Vaccinated	At Least One Dose	Fully Vaccinated																											
Total	186,819,440	161,895,045																											
% of Total Population	56.3%	48.8%																											
Population ≥ 12 Years of Age	186,597,197	161,765,990																											
% of Population ≥ 12 Years of Age	65.8%	57.1%																											
Population ≥ 18 Years of Age	176,729,812	154,028,105																											
% of Population ≥ 18 Years of Age	68.4%	59.6%																											
Population ≥ 65 Years of Age	48,767,745	43,507,032																											
% of Population ≥ 65 Years of Age	89.2%	79.5%																											

## NUMBER OF NEW CASES AND DEATHS IN THE LAST 7 DAYS

**Total Cumulative Cases: 33,896,296**  
**New Cases in Last 7 Days: 182,079**  
**Percent Change from Previous 7 Days: +24.8%**

**Total Cumulative Deaths: 606,618**  
**New Deaths in Last 7 Days: 1,527**  
**Percent Change from Previous 7 Days: +37.1%**



AL state-level case and mortality data were back distributed on 7/19/2021.

INITIAL PUBLIC RELEASE // SUBJECT TO CHANGE

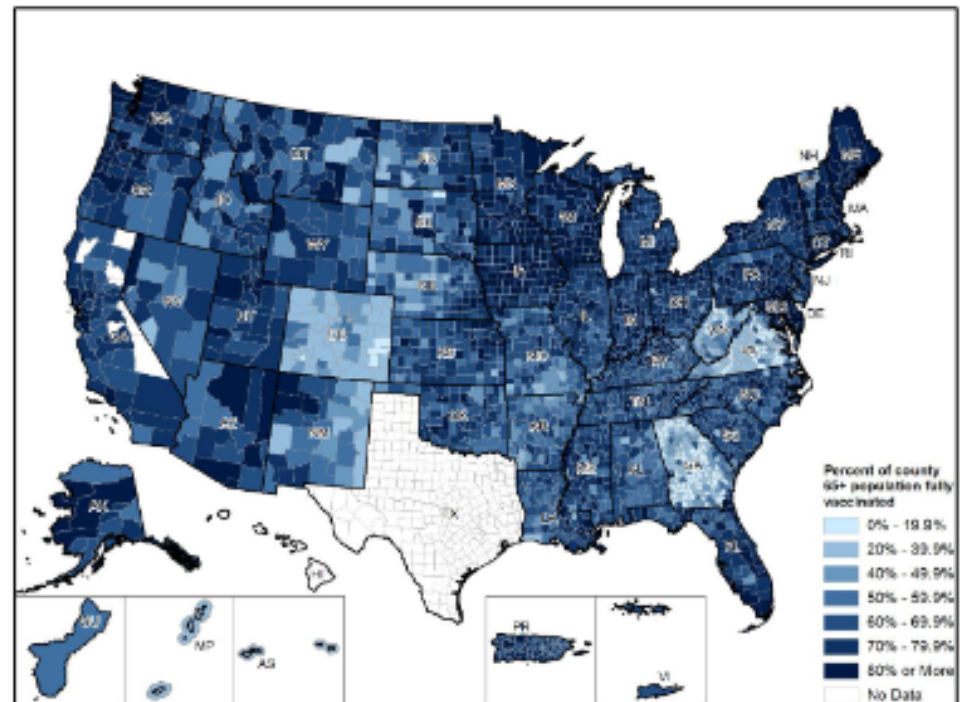
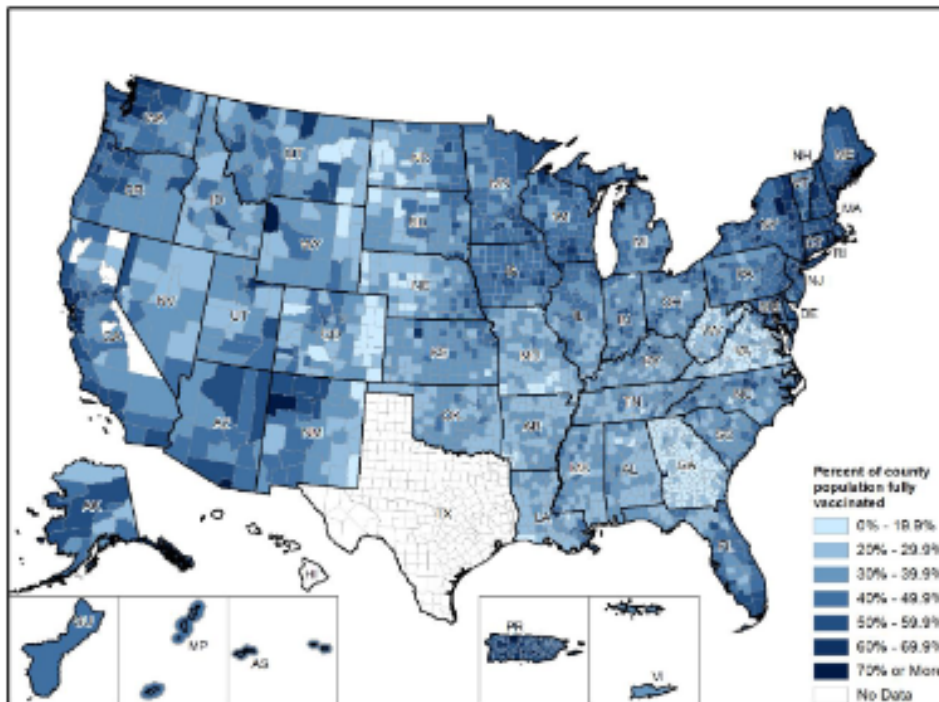




# VACCINATION RATES BY COUNTY

**Percent of Population Fully Vaccinated: 48.6%**  
**Percent of Population with at Least 1 Dose: 56.1%**

**Percent of 65+ Population Fully Vaccinated: 79.3%**  
**Percent of 65+ Population with at Least 1 Dose: 88.9%**



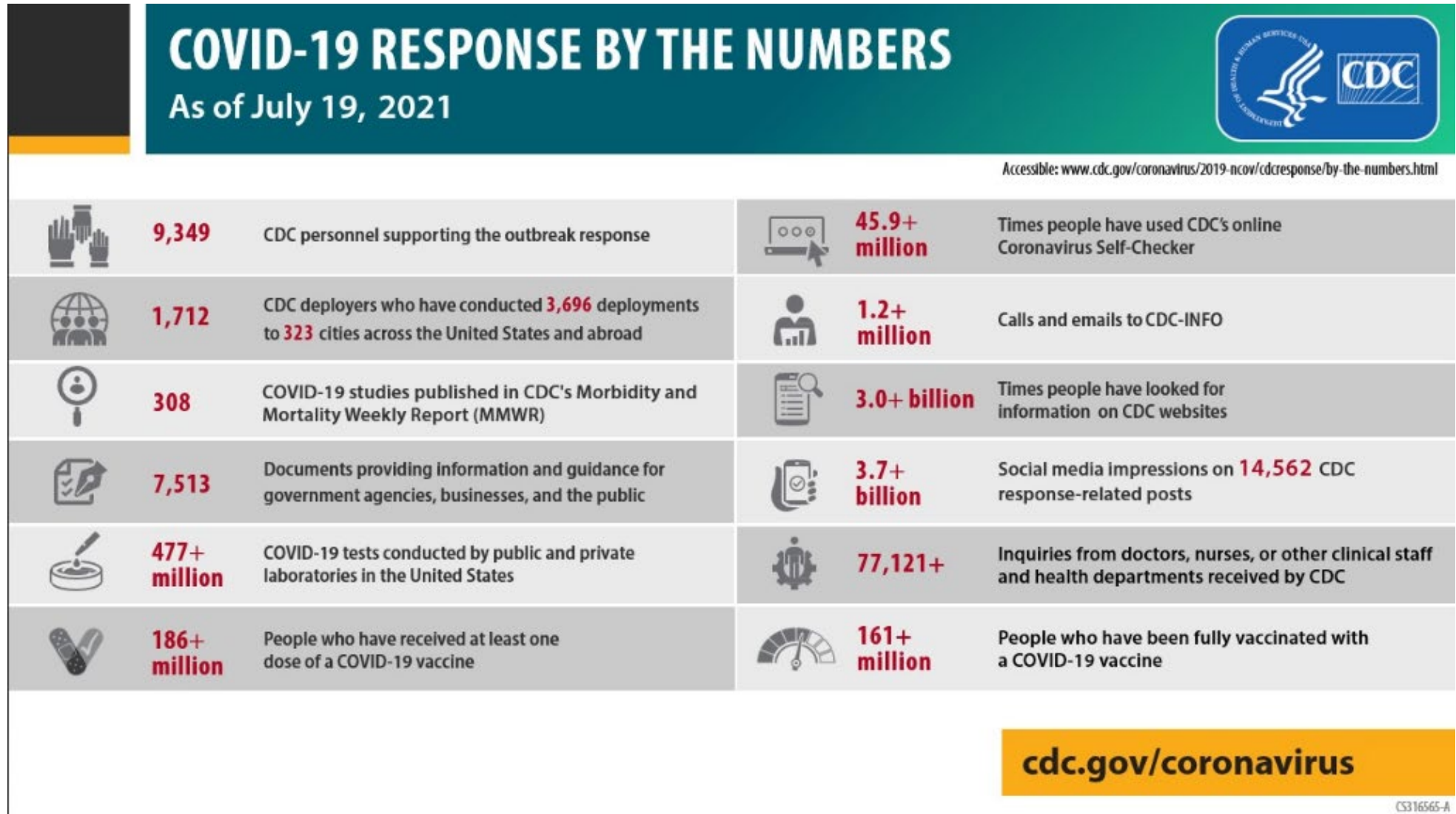
**Source:** Unified COVID-19 Vaccine Dataset. Fully vaccinated indicates those who received the second dose of Pfizer-BioNTech or Moderna vaccines and those who received one dose of J&J/Janssen COVID-19 vaccine. Values reflect total by report date, not administered date. The following states have ≤80% completeness reporting vaccinations by county, which may result in underestimates of vaccination data for counties and CBSAs: CO (76%), VT (74%), WV (58%), GA (54%), VA (51%), AS (0%), FM (0%), TX (0%), PW (0%), HI (0%), MH (0%), MP (0%)

**INITIAL PUBLIC RELEASE // SUBJECT TO CHANGE**



## COVID-19 By the Numbers as of 07-19-2021

<https://www.cdc.gov/coronavirus/2019-ncov/cdcresponse/by-the-numbers.html>



## COVID-19 Science Update

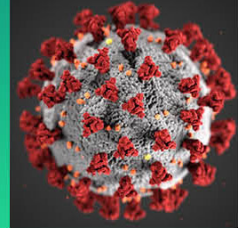
Prepared by Justin Czerniak

[justin.czerniak@norcocollege.edu](mailto:justin.czerniak@norcocollege.edu)

Daily Situation Reports Archive

<https://www.norcocollege.edu/sep/Pages/reports.aspx>

# COVID-19 Science Update



<https://www.cdc.gov/library/covid19/scienceupdates.html?Sort=Date%3A%3Adesc>

[COVID-19 Science Update released: July 16, 2021 Edition 98](#)

[COVID-19 Science Update released: July 9, 2021 Edition 97](#)

[COVID-19 Science Update released: July 2, 2021 Edition 96](#)

[COVID-19 Science Update released: June 25, 2021 Edition 95](#)

[COVID-19 Science Update released: June 18, 2021 Edition 94](#)

[COVID-19 Science Update released: June 11, 2021 Edition 93](#)

[COVID-19 Science Update released: June 4, 2021 Edition 92](#)

[COVID-19 Science Update released: May 28, 2021 Edition 91](#)

[COVID-19 Science Update released: May 21, 2021 Edition 90](#)

[COVID-19 Science Update released: May 14, 2021 Edition 89](#)

## CDC What's New & Updated

<https://www.cdc.gov/coronavirus/2019-ncov/whats-new-all.html>

- [7/22/21 Changes in Influenza and Other Respiratory Virus Activity During the COVID-19 Pandemic — United States, 2020–2021](#)
- [7/21/21 Toolkit for H-2A Employers, Partner Agencies, and Partner Organizations](#)
- [7/21/21 Health Equity in Action](#)
- [7/21/21 Cruise Ship Color and Commercial Travel Status](#)
- [7/21/21 Communication Toolkit](#)
- [7/21/21 Cases in the U.S.](#)
- [7/21/21 Overall US COVID-19 Vaccine Distribution and Administration Update as of Wed, 21 Jul 2021 06:00:00 EST](#)
- [7/20/21 Considerations for the Case Investigation and Contact Tracing Workforce: Enhancing Access to COVID-19 Vaccination Services](#)
- [7/20/21 COVID-19 Forecasts: Deaths](#)
- [7/20/21 Previous COVID-19 Forecasts: Hospitalizations](#)
- [7/20/21 Interim Public Health Recommendations for Fully Vaccinated People](#)
- [7/20/21 Staffing Resources](#)
- [7/20/21 Selected Adverse Events Reported after COVID-19 Vaccination](#)
- [7/20/21 COVID-19 Forecasts: Cases](#)
- [7/20/21 When to Quarantine](#)
- [7/19/21 Cases in the U.S.](#)
- [7/19/21 Overall US COVID-19 Vaccine Distribution and Administration Update as of Mon, 19 Jul 2021 06:00:00 EST](#)
- [7/18/21 Staffing Resources](#)
- [7/18/21 COVID-19 Hospitalization and Death by Age](#)
- [7/18/21 Cruise Ship Color and Commercial Travel Status](#)
- [7/18/21 COVID-19 Travel Recommendations by Country](#)
- [7/15/21 Families with Vaccinated and Unvaccinated Members](#)
- [7/15/21 COVID-19 Science Update released: July 16, 2021 Edition 98](#)
- [7/15/21 Laws and Regulations](#)
- [7/15/21 Interim Public Health Recommendations for Fully Vaccinated People](#)
- [7/15/21 When You've Been Fully Vaccinated](#)
- [7/15/21 Percent of Delivered First Vaccine Doses Administered by U.S. States and Territories](#)
- [7/15/21 COVID-19 Hospitalization and Death by Race/Ethnicity](#)
- [7/15/21 When You Can be Around Others After You Had or Likely Had COVID-19](#)
- [7/15/21 COVID Data Tracker Weekly Review](#)
- [7/15/21 Coronavirus Disease 2019 \(COVID-19\)](#)
- [7/15/21 Frequently Asked Questions](#)
- [7/15/21 COVID-19 Vaccine Administration, by Race and Ethnicity — North Carolina, December 14, 2020–April 6, 2021](#)



## **CDC Guidance**

<https://www.cdc.gov/coronavirus/2019-ncov/communication/guidance-list.html?Sort=Date%3A%3Adesc>

### [Interim Public Health Recommendations for Fully Vaccinated People](#)

Interim public health recommendations describing the type of activities people who are fully vaccinated can do once fully vaccinated. Date: 7/15/21

### [Guidance for General Laboratory Safety Practices during the COVID-19 Pandemic](#)

This guidance addresses general safety concerns for laboratory personnel during the COVID-19 pandemic. It includes recommendations for risk assessments, health and safety plans, social distancing, face coverings, disinfection, and personal hygiene. Date: 7/14/21

### [Guidance for Adult Day Services Centers](#)

Strategies for administrators and staff to prevent the spread of COVID-19 in Adult Day Service Centers (ADSCs). ADSCs provide social or health services to community-dwelling adults aged 65 and over and adults of any age living with disability. Date: 7/13/21

### [Key Operational Considerations for Jurisdictions Planning to Operate COVID-19 Vaccination Clinics](#) Date: 7/9/21

### [Expanding COVID-19 Vaccine Distribution to Primary Care Providers to Address Disparities in Immunization](#) Date: 7/9/21

### [COVID-vaccine-breakthrough-case-investigations-Protocol](#) Date: 7/9/21

### [COVID-19 Guidance for Operating Early Care and Education/Child Care Programs](#)

COVID-19 Guidance for Operating Early Care and Education/Child Care Programs Date: 7/8/21

### [Guidance for COVID-19 Prevention in K-12 Schools](#)

Guidance for COVID-19 Prevention in Kindergarten (K)-12 Schools Date: 7/8/21

### [Interim Guidance on People Experiencing Unsheltered Homelessness](#)

People experiencing homelessness and those who can them can take steps to prevent getting sick and stay healthy during the COVID-19 pandemic. Date: 7/7/21

### [Interim Guidance on People Experiencing Unsheltered Homelessness](#)

People experiencing homelessness and those who can them can take steps to prevent getting sick and stay healthy during the COVID-19 pandemic. Date: 7/6/21

### [Public Health Guidance for Potential COVID-19 Exposure Associated with Travel](#)

CDC's recommendations for travel-associated exposures. Date: 7/1/21

# California Takes Action to Combat COVID-19

<https://www.gov.ca.gov/california-takes-action-to-combat-covid-19/>



## State Data

<https://covid19.ca.gov/>  
<https://update.covid19.ca.gov/#top>  
<https://www.cdph.ca.gov/Programs/CID/DCDC/Pages/Immunization/ncov2019.aspx#>  
<https://www.cdph.ca.gov/Programs/CID/DCDC/Pages/COVID-19/CovidDataAndTools.aspx>

## Safely reopening California

<https://covid19.ca.gov/safely-reopening/>

## Blueprint for a Safer Economy – COVID-19 and Equity

<https://www.cdph.ca.gov/Programs/CID/DCDC/Pages/COVID-19/CaliforniaHealthEquityMetric.aspx>

## California Healthy Places Index

<https://covid19.healthyplacesindex.org/>  
<https://map.healthyplacesindex.org/>

## Safe Schools for All

<https://schools.covid19.ca.gov/>

## CDPH

<https://www.cdph.ca.gov/Programs/CID/DCDC/Pages/DCDC.aspx>

## CDPH Statewide industry guidance

<https://www.cdph.ca.gov/Programs/CID/DCDC/Pages/Guidance.aspx>



Office of Governor  
**GAVIN NEWSOM**

Press Releases, Executive Orders, Media Advisories,  
Proclamations, and “On the Record” Column

<https://www.gov.ca.gov/newsroom/>

## Data models

<https://covid19.ca.gov/data-and-tools/>

## Cal/OSHA

<https://www.dir.ca.gov/dosh/>  
<https://www.dir.ca.gov/dosh/COVID19citations.html>  
<https://www.dir.ca.gov/oshab/oshab.html>

## Vaccines

<https://covid19.ca.gov/vaccines/>  
<https://myturn.ca.gov/>

## News Releases

<https://www.cdph.ca.gov/Programs/OPA/Pages/News-Releases-2021.aspx>

# Tracking COVID-19 in CA

Updated July 22, 2021 with data from July 21, 2021

### CASES

3,778,047 total

5,577 today

↗ 8.7 new cases per 100K

### DEATHS

63,695 total

31 today

↗ 0.02 new deaths per 100K

### TESTS

72,268,108 total

111,325 today

↗ 4.9% test positivity

### VACCINES ADMINISTERED

43,214,612 total

<https://covid19.ca.gov/vaccination-progress-data/>

## Statewide

**20,927,113 (61.7%)** *People fully vaccinated*  
**3,133,478 (9.2%)** *People partially vaccinated*



**43,214,612 (88.1%)** *Doses administered*  
**61,487** *Average doses per day*



**5,299,380** *Doses on hand*  
**(86 days of inventory)**



**49,060,085** *Doses Delivered*  
**13,672,040** *CDC Pharmacy Doses Delivered*

See [Data Dictionary](#) for Details.

## Doses Administered by County of Residence

County

(All) ▼



Los Angeles	11,080,253	▲
San Diego	3,874,591	
Orange	3,620,878	
Santa Clara	2,652,032	
Riverside	2,153,810	
Alameda	2,124,410	
San Bernardino	1,784,149	
Sacramento	1,560,372	
Contra Costa	1,482,054	
San Francisco	1,220,303	
San Mateo	1,043,812	
Ventura	953,436	
Fresno	866,856	
San Joaquin	676,790	
Kern	650,360	
Sonoma	620,490	
Santa Barbara	482,482	
Stanislaus	470,087	
Monterey	466,797	
Solano	457,788	▼

Data: 7/21/2021 11:59pm | Posted: 7/22/2021



# Riverside County Data

<https://www.rivcoph.org/coronavirus>

Dashboard -Click [here](#) for more detailed city/community data and reports

## RUHS Public Health News:

- Posting of Riverside County updates to COVID-19 website will now take place weekly [English](#) / [Spanish](#) - June 29, 2021
- Vaccine clinic at Palm Springs Convention Center to close; testing site in Perris to shut down [English](#) / [Spanish](#) - June 28, 2021
- Reopening Day [English](#) / [Spanish](#) - June 15, 2021
- Two million COVID-19 vaccines given in Riverside County, plus one, to father-son duo English
- Thousands of homebound residents in Riverside County will now be able to get vaccinated [English](#) / [Spanish](#) - May 21, 2021
- Clinics in Menifee, Beaumont to close as focus shifts to more use of mobile teams to deliver vaccinations [English](#) / [Spanish](#) - May 20, 2021

<b>Total Tests</b> 3,417,028	<b>Confirmed</b> 304,060	<b>Currently Hospitalized</b> 155 Includes 30 in ICU	<b>Deaths</b> 4,657	<b>Recovered</b> 297,011
<b>Case Rate / 100k</b> 7.1 (7-Day Avg & 7-Day Lag)	<b>Positivity</b> 4.7% (7-Day Avg & 7-Day Lag)		<b>COVID-19 Data for Zip Codes and Communities</b> <a href="#">here</a>	

## New Variant Dashboard

Variants of Concern		
Lineage	WHO Label	Riverside County
B.1.1.7 (UK)	Alpha	149
B.1.351 (South Africa)	Beta	0
P.1 (Brazil)	Gamma	11
B.1.617.2 (India)	Delta	25

### Footnotes

1. Last updated on July 14, 2021. Specimen collection dates range from April 2021-June 30, 2021. This dashboard is updated every Wednesday, but please note that there is a lag in the data of up to a month or more due to the time required for laboratories to sequence and report variant cases to the Public Health Department.

2. Data included in this dashboard only represent cases reported or known to the Riverside County Department of Public Health . As a result, variant case counts presented in this dashboard do not represent the total number of infections due to variant strains that may be circulating in Riverside. Cases reported in this dashboard are preliminary and are subject to change upon further investigation.

Information on Variants in California is located at <https://www.cdph.ca.gov/Programs/CID/DCDC/Pages/COVID-19/COVID-Variants.aspx>

# Daily Epidemiology Summary updated 07-21-2021

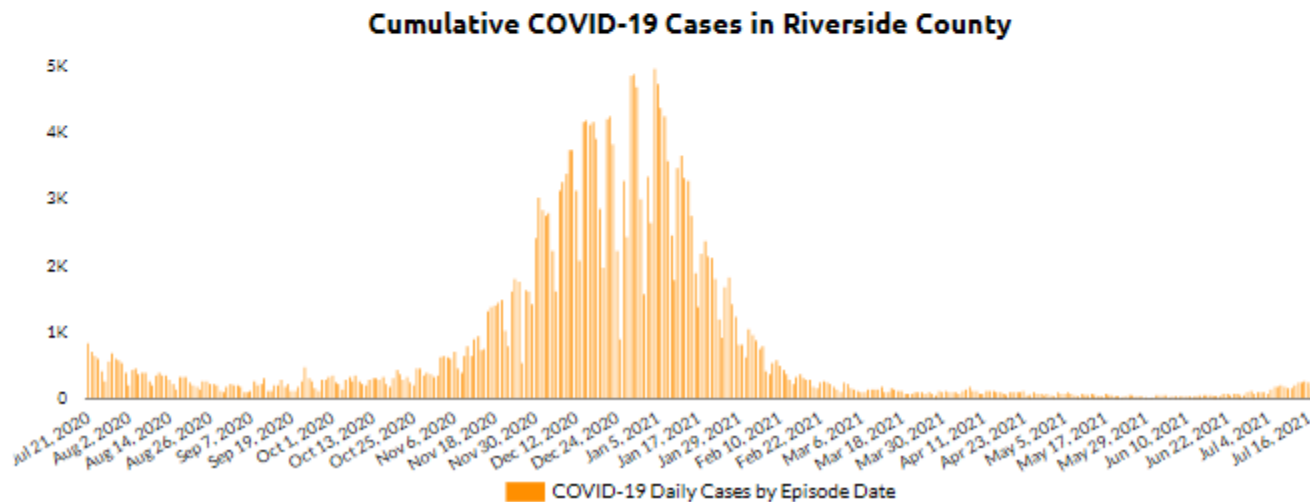
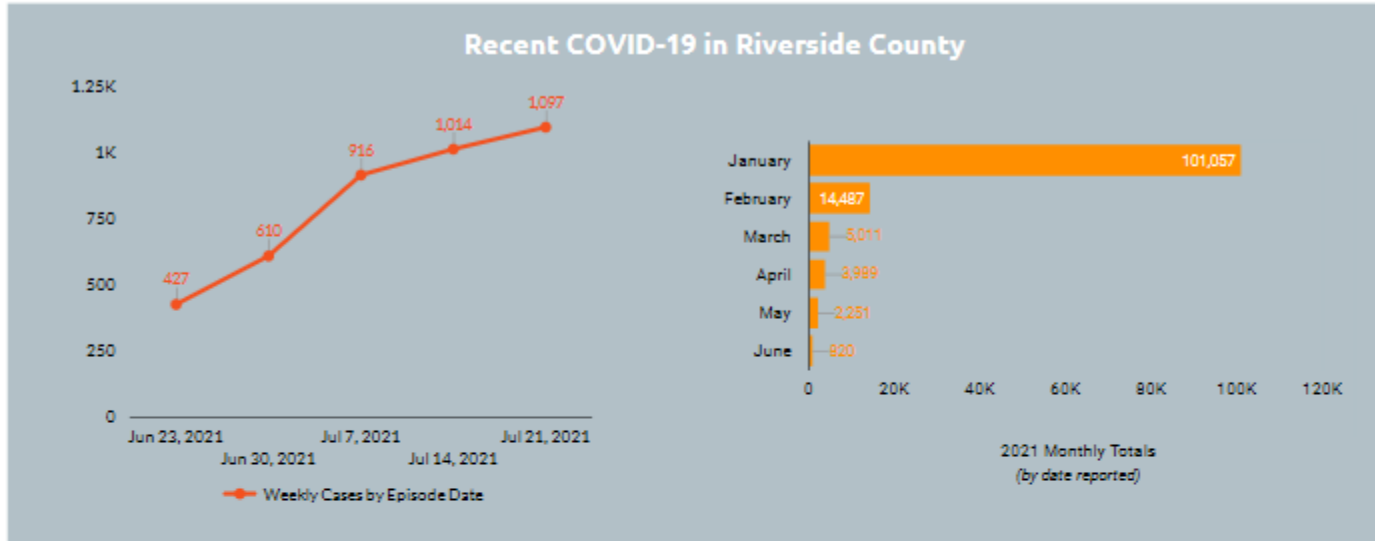
[https://www.rivcoph.org/Portals/0/Documents/CoronaVirus/July2021/Dashboard/Weekly\\_COVID-19\\_Updates%200715to0721.pdf?ver=2021-07-21-171041-277&timestamp=1626912675360](https://www.rivcoph.org/Portals/0/Documents/CoronaVirus/July2021/Dashboard/Weekly_COVID-19_Updates%200715to0721.pdf?ver=2021-07-21-171041-277&timestamp=1626912675360)



## RIVERSIDE COUNTY COVID-19 CASES WEEKLY REPORT

Jul 21, 2021

- TOTAL CASES**  
**304,060**
- NEW WEEKLY CASES**  
**1,097**
- TOTAL DEATHS**  
**4,657**
- NEW WEEKLY DEATHS**  
**1**
- TOTAL RECOVERED**  
**297,011**
- PROBABLE CASES\***  
**14,912**
- CURRENT HOSPITALIZED (includes ICU)**  
**155**
- CURRENT ICU**  
**30**
- DOUBLING TIME**  
**210.7**



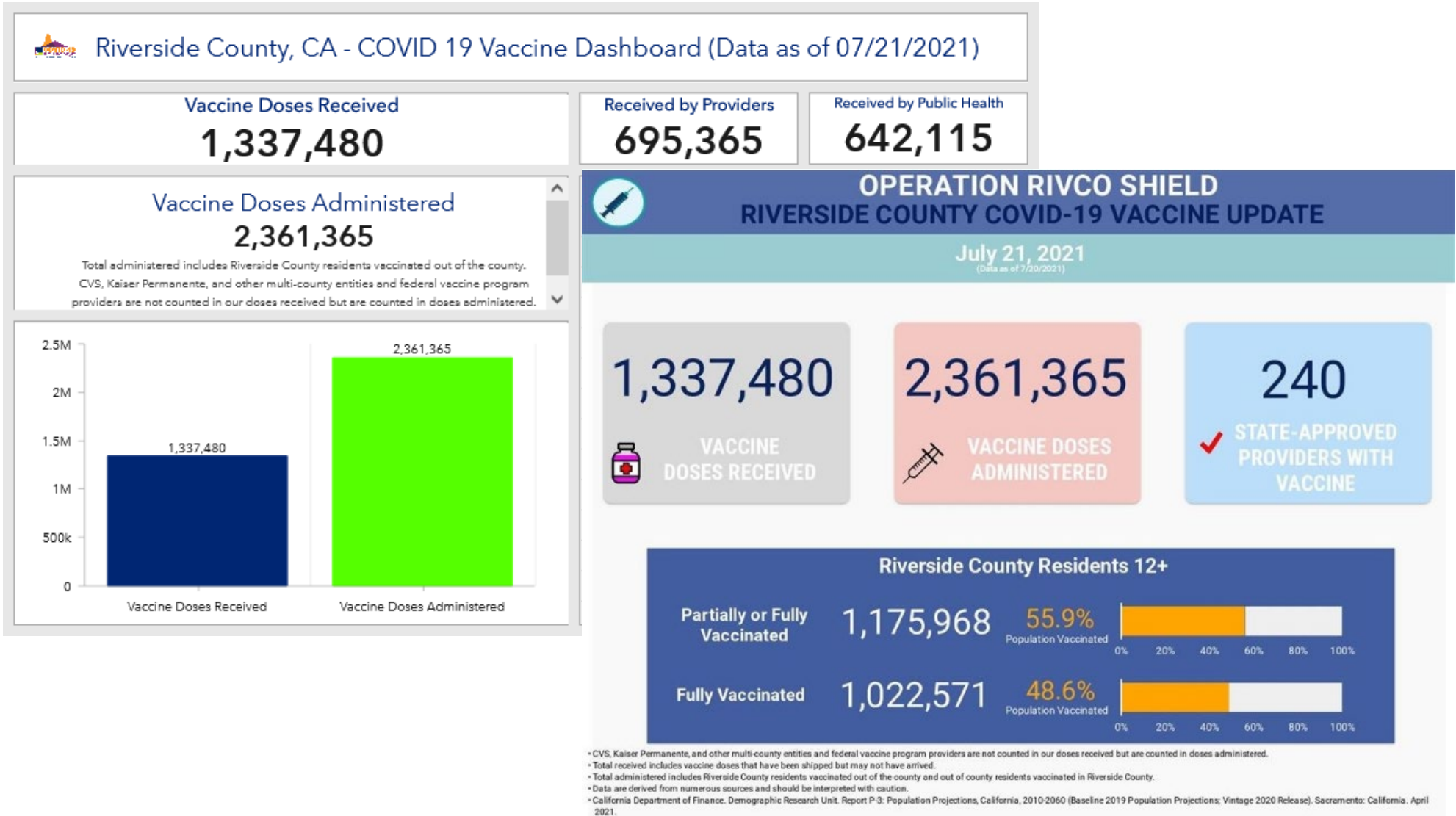


# COVID-19 Vaccine

<https://www.rivcoph.org/COVID-19-Vaccine>

## RUHS Public Health:

- Johnson & Johnson Fact Sheet [English](#) / [Spanish](#) - April 26, 2021
- Breakthrough Church vaccine clinic [English](#) / [Spanish](#) - March 09, 2021
- Sierra Dawn vaccine clinic in Hemet - March 08, 2021



# Weather

National Weather Service San Diego, California		Weather Threats Outlook						
		Noon Wednesday, July 21, 2021						
County	Zone	Wed 7/21	Thu 7/22	Fri 7/23	Sat 7/24	Sun 7/25	Mon 7/26	Tue 7/27
San Diego	Beach/Marine	None	None	None	None	None	None	None
	Coast	None	None	None	None	None	None	None
	Valleys	None	None	None	None	None	Slight Chance of T-Storms	None
	Mountains	Slight Chance of T-Storms	Chance of T-Storms	Slight Chance of T-Storms	Slight Chance of T-Storms	Slight Chance of T-Storms	Chance of T-Storms	Slight Chance of T-Storms
	Deserts	None	Slight Chance of T-Storms	None	Slight Chance of T-Storms	Slight Chance of T-Storms	Slight Chance of T-Storms	None
Orange	Beach	None	None	None	None	None	None	None
	Coast	None	None	None	None	None	None	None
	Inland	None	None	None	None	None	None	None
	Mountains	None	None	None	None	None	None	None
Riverside	Inland Empire	None	None	None	None	None	Slight Chance of T-Storms	None
	Mountains	Slight Chance of T-Storms	Chance of T-Storms	Slight chance of T-Storms	Slight Chance of T-Storms	Slight Chance of T-Storms	Chance of T-Storms	Slight Chance of T-Storms
	Desert	None	Slight chance of T-Storms	None	Slight chance of T-Storms	Slight Chance of T-Storms	Slight Chance of T-Storms	None
San Bernardino	Inland Empire	None	None	None	None	None	Slight Chance of T-Storms	None
	Mountains	Slight Chance of T-Storms	Chance of T-Storms	Slight chance of T-Storms	Slight Chance of T-Storms	Slight Chance of T-Storms	Chance of T-Storms	Slight Chance of T-Storms
	Desert	None	Slight Chance of T-Storms	None	Slight Chance of T-Storms	Slight Chance of T-Storms	Slight Chance of T-Storms	None

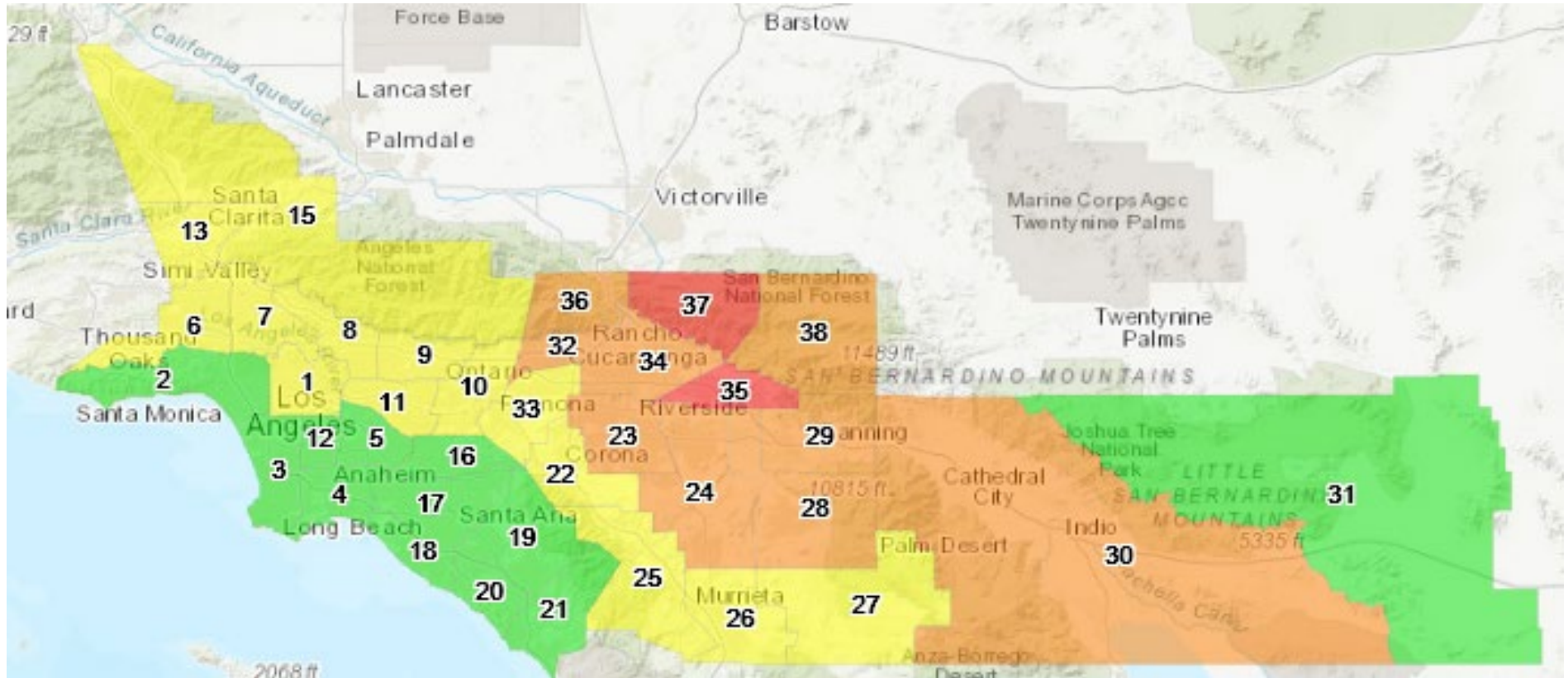
Impact Threat Levels: None, Minor, Moderate, High, Extreme

Latest hazard threat table: <https://www.wrh.noaa.gov/sqx/event/dsstable.php>

<https://www.weather.gov/forecastpoints#>

# Today's Forecast

<https://www.arcgis.com/apps/webappviewer/index.html?id=85c7770bac684749a631bd7b42eac1b7>



## Legend

The Air Quality Index (AQI) is an index for reporting daily air quality that conveys how air pollution can affect public health. The AQI is divided into six levels of health concern:

- AQI Value
- Hazardous (301-500)
  - Very Unhealthy (201-300)
  - Unhealthy (151-200)
  - Unhealthy for Sensitive Groups (101-150)
  - Moderate (51-100)
  - Good (0-50)