



****Extraordinary Assumptions:** There are many different data sources in this report and not all of them match. The goal is to provide an overall picture of the current situation.

Daily Situation Summary

Monday, June 28, 2021

As of 4:00 PM

COVID-19 by the Numbers

6/28/2021	Riverside	Imperial	Kern	Los Angeles*	Orange	San Bernardino	San Diego	San Luis Obispo	Santa Barbara	Ventura	California	United States	Global
Total Cases	301,799	28,348	110,948	1,249,304	256,052	299,604	282,358	21,448	34,642	81,750	3,789,070	33,451,748	180,817,269
New Cases	0	0	0	239	0	102	96	0	0	0	606	4,716	325,138
Total Cases Per Capita	12,228	14,792	11,965	12,179	7,931	13,512	8,378	7,691	7,591	9,587	9,442	10,065	2,329
New Cases Per Capita	0.00	0.00	0.00	2.33	0.00	4.60	2.85	0.00	0.00	0.00	1.51	1.42	4.19
Recovered	296,375	25,575	40,476	Not Reported	249,950	293,927	Not Reported	21,156	34,218	80,687	2,072,518	28,950,182	166,598,831
Total Deaths	4,627	741	1,405	24,477	5,114	4,679	3,780	261	455	1,027	63,223	601,506	3,923,238
New Deaths	0	0	0	3	0	8	0	0	0	0	13	111	6,467
Deaths Per Capita	187.47	386.64	151.52	238.62	158.40	211.01	112.15	93.59	99.70	120.43	157.55	180.99	50.53
% of State's Cases	7.96%	0.75%	2.93%	32.97%	6.76%	7.91%	7.45%	0.57%	0.91%	2.16%	11.33%	18.50%	
Currently in Hospitals	42	4	30	229	51	69	66	6	10	12	980		
Total Hospital Beds	3,229	236	1,147	18,990	5,784	3,543	6,439	460	603	1,127	65,229		
Currently in ICU	13	2	9	90	11	24	25	2	5	2	290		
ICU Beds Available	106	6	44	689	161	179	282	14	46	49	2,425		
Case Fatality Rate	1.53%	2.61%	1.27%	1.96%	2.00%	1.56%	1.34%	1.22%	1.31%	1.26%	1.67%	1.80%	2.17%
Population*	2,468,145	191,649	927,251	10,257,557	3,228,519	2,217,398	3,370,418	278,862	456,373	852,747	40,129,160	332,345,359	7,763,643,000
% of Population	6.15%	0.48%	2.31%	25.56%	8.05%	5.53%	8.40%	0.69%	1.14%	2.13%	12.07%	4.28%	

Sources: CDPH, WHO, CDC, Local County Data, LA Times

The date for which case statistics and hospital data were reported. Hospital COVID data are self-reported through a portal managed by the California Hospital Association and pulled at 2pm. COVID case statistics are reported by local health departments to CalREDIE and are pulled at 2pm. Hospital data and case statistics are integrated by the California Department of Technology and made available through the Open Data Portal the following morning. CA Open Data Portal is at least 24 Hours behind although a backlog of new case reports at the State level has ostensibly been cleared, some County dashboards still contain notes that indicate data are missing. *California Demographics from State Database Blueprint Data Chart 12-15-20 & census.gov . Presumptive active cases - A calculation (Total Cases - Recovered - Dead) (* LA County does not report recovery rates)

News

More detail on page 2

US Data

More detail on page 3

State Data

More detail on page 7

County of Riverside

More detail on page 9

Weather

More detail on page 10

Air Quality

More detail on page 11

News – The collection of news articles is related to COVID-19. The inclusion or order of articles is not intended to reflect their importance, nor is it intended to endorse the political viewpoints or affiliations included in news coverage.

Study suggests Pfizer, Moderna COVID-19 vaccines could provide 'years' of protection

- A new study reportedly suggests the COVID-19 vaccines from Pfizer and Moderna could provide protection for "years."
- The vaccines made by Pfizer-BioNTech and Moderna set off a persistent immune reaction in the body that may protect against the coronavirus for years, scientists reported on Monday.
- The findings add to growing evidence that most people immunized with the mRNA vaccines may not need boosters, so long as the virus and its variants do not evolve much beyond their current forms — which is not guaranteed. People who recovered from Covid-19 before being vaccinated may not need boosters even if the virus does make a significant transformation.
- "It's a good sign for how durable our immunity is from this vaccine," said Ali Ellebedy, an immunologist at Washington University in St. Louis who led the study, which was published in the journal Nature.
- Dr. Ellebedy and his colleagues reported last month that in people who survived Covid-19, immune cells that recognize the virus lie quiescent in the bone marrow for at least eight months after infection. A study by another team indicated that so-called memory B cells continue to mature and strengthen for at least a year after infection.
- Based on those findings, researchers suggested that immunity might last for years, possibly a lifetime, in people who were infected with the coronavirus and later vaccinated. But it was unclear whether vaccination alone might have a similarly long-lasting effect.
- The results suggest that a vast majority of vaccinated people will be protected over the long term — at least, against the existing variants. But older adults, people with weak immune systems and those who take drugs that suppress immunity may need boosters; people who survived Covid-19 and were later immunized may never need them at all.
- Exactly how long the protection from mRNA vaccines will last is hard to predict. In the absence of variants that sidestep immunity, in theory immunity could last a lifetime, experts said. But the virus is clearly evolving.

<https://news.yahoo.com/study-suggests-pfizer-moderna-covid-131904210.html>

<https://www.nytimes.com/2021/06/28/health/coronavirus-vaccines-immunity.html>

Journal of Nature - Published: 28 June 2021

[SARS-CoV-2 mRNA vaccines induce persistent human germinal centre responses](#)

A third dose of the AstraZeneca vaccine is found to boost immune response.

- A third dose of the Covid-19 vaccine developed by AstraZeneca and the University of Oxford generated a strong immune response in clinical trial volunteers, Oxford researchers reported on Monday.
- The finding indicates that the AstraZeneca vaccine could be an option should third shots end up being needed, for example, to extend immunity. To date, the vaccine has been given as two doses, typically between four and 12 weeks apart.
- The new data, detailed in a preprint manuscript that has not yet been peer reviewed, came from 90 study volunteers in Britain who were among the earliest to receive the shots in a clinical trial last year. This past March, they were given a third dose, roughly 30 weeks after their second.

[https://www.nytimes.com/live/2021/06/28/world/covid-vaccine-coronavirus-mask?name=styl-n-](https://www.nytimes.com/live/2021/06/28/world/covid-vaccine-coronavirus-mask?name=styl-n-coronavirus®ion=MAIN_CONTENT_2&block=storyline_latest_updates_recirc&action=click&pgtype=Article&variant=1_Show&index=2#astrazeneca-vaccine-booster-shot)

[coronavirus®ion=MAIN_CONTENT_2&block=storyline_latest_updates_recirc&action=click&pgtype=Article&variant=1_Show&index=2#astrazeneca-vaccine-booster-shot](#)

Worried by the Delta variant, W.H.O. officials urged vaccinated people to keep wearing masks.

- World Health Organization officials, concerned about the easing of precautions meant to stop the spread of the coronavirus even as the most contagious variant to date has emerged, have urged even fully vaccinated people to continue wearing masks and to keep taking other measures to prevent infection.
- Asked on Monday about the new cautions expressed by the W.H.O. — the world’s largest public health organization — a C.D.C. spokesman pointed to the existing guidance and gave no indication it would change.

https://www.nytimes.com/live/2021/06/28/world/covid-vaccine-coronavirus-mask?name=style-coronavirus®ion=MAIN_CONTENT_2&block=storyline_latest_updates_recirc&action=click&pgtype=Article&variant=1_Show&index=2#worried-by-the-delta-variant-who-officials-urged-vaccinated-people-to-keep-wearing-masks



U. S. Data

https://covid.cdc.gov/covid-data-tracker/#cases_casesper100klast7days

United States COVID-19 Cases and Deaths by State

Maps, charts, and data provided by CDC, updates daily by 8 pm ET[†]



<https://covid.cdc.gov/covid-data-tracker/#vaccinations>

COVID-19 Vaccinations in the United States

<p>Total Vaccine Doses</p> <p>Delivered 381,282,720</p> <p>Administered 324,414,371</p> <p>Learn more about the distribution of vaccines.</p>	People Vaccinated		
	At Least One Dose	Fully Vaccinated	
	Total	179,615,165	153,776,118
	% of Total Population	54.1%	46.3%
	Population ≥ 12 Years of Age	179,404,316	153,659,988
	% of Population ≥ 12 Years of Age	63.3%	54.2%
	Population ≥ 18 Years of Age	170,813,590	147,334,576
	% of Population ≥ 18 Years of Age	66.1%	57%
	Population ≥ 65 Years of Age	47,936,213	42,520,143
	% of Population ≥ 65 Years of Age	87.6%	77.7%

153.8M
People fully vaccinated

COVID-19 Community Profile Report 06-24-2021

<https://beta.healthdata.gov/Health/COVID-19-Community-Profile-Report/gqxm-d9w9>

COVID-19 By the Numbers as of 06-28-2021

<https://www.cdc.gov/coronavirus/2019-ncov/cdcreponse/by-the-numbers.html>

FEMA recently updated the [COVID-19 Resource Roadmaps](#) to assist state, local, tribal and territorial (SLTT) partners with the unprecedented challenges associated with the COVID-19 pandemic.

COVID-19 Science Update



<https://www.cdc.gov/library/covid19/scienceupdates.html?Sort=Date%3A%3Adesc>

[COVID-19 Science Update released: June 25, 2021 Edition 95](#)

[COVID-19 Science Update released: June 18, 2021 Edition 94](#)

[COVID-19 Science Update released: June 11, 2021 Edition 93](#)

[COVID-19 Science Update released: June 4, 2021 Edition 92](#)

[COVID-19 Science Update released: May 28, 2021 Edition 91](#)

[COVID-19 Science Update released: May 21, 2021 Edition 90](#)

[COVID-19 Science Update released: May 14, 2021 Edition 89](#)

CDC What's New & Updated

<https://www.cdc.gov/coronavirus/2019-ncov/whats-new-all.html>

- 6/28/21 [Cases in the U.S.](#)
- 6/28/21 [Overall US COVID-19 Vaccine Distribution and Administration Update as of Mon, 28 Jun 2021 06:00:00 EST](#)
- 6/27/21 [Reporting COVID-19 Vaccination Demographic Data](#)
- 6/27/21 [Percent of Delivered First Vaccine Doses Administered by U.S. States and Territories](#)
- 6/27/21 [Cruise Ship Color and Commercial Travel Status](#)
- 6/27/21 [Cases & Deaths by County](#)
- 6/27/21 [COVID-19 Travel Recommendations by Country](#)
- 6/26/21 [Testing Data in the U.S.](#)
- 6/25/21 [Staffing Resources](#)
- 6/25/21 [EARLY RELEASE: Symptoms of Depression, Anxiety, Post-Traumatic Stress Disorder, and Suicidal Ideation Among State, Tribal, Local, and Territorial Public Health Workers During the COVID-19 Pandemic - United States, March-April 2021](#)
- 6/25/21 [COVID Data Tracker Recent Updates - 2021-06-24 - Users can now filter all maps on County View tab to display only metropolitan counties or only non-metropolitan counties](#)
- 6/25/21 [COVID Data Tracker Recent Updates - 2021-06-24 - New Vaccination and Case Trends tab displays trends in people receiving at least 1 dose of vaccine and being fully vaccinated along with trends in cases, by age group](#)
- 6/24/21 [COVID-19 Science Update released: June 25, 2021 Edition 95](#)
- 6/24/21 [What You Should Know About the Possibility of COVID-19 Illness After Vaccination](#)
- 6/24/21 [U.S. COVID-19 Vaccination Program: Vaccine Channel Portfolio by Jurisdiction](#)
- 6/24/21 [Contact Tracing Resources for Health Departments](#)
- 6/24/21 [Key Things to Know About COVID-19 Vaccines](#)
- 6/24/21 [COVID Data Tracker Weekly Review](#)
- 6/24/21 [COVID-19 Surveillance and Investigations in Workplaces - Seattle & King County, Washington, June 15-November 15, 2020](#)
- 6/24/21 [COVID-19 Vaccination Coverage and Intent Among Adults Aged 18-39 Years - United States, March-May 2021](#)
- 6/24/21 [CDC Director Extends the Eviction Moratorium for 30 days](#)
- 6/23/21 [Preparing for Your COVID-19 Vaccination](#)
- 6/23/21 [Information about the Pfizer-BioNTech COVID-19 Vaccine](#)
- 6/23/21 [Possible Side Effects After Getting a COVID-19 Vaccine](#)
- 6/23/21 [Federal Register Notice: Temporary Halt in Residential Evictions to Prevent the Further Spread of COVID-19](#)

CDC Guidance

<https://www.cdc.gov/coronavirus/2019-ncov/communication/guidance-list.html?Sort=Date%3A%3Adesc>

[Temporary Halt in Residential Evictions to Prevent the Further Spread of COVID-19](#)

Dr. Robert Redfield signed a declaration determining that the evictions of tenants could be detrimental to public health control measures to slow the spread COVID-19 Date: 6/23/21

[Guidance for Reporting SARS-CoV-2 Sequencing Results](#)

It is critically important for the nation's COVID-19 pandemic response to understand the genetic diversity, spread, and evolution of SARS-CoV-2, including variant viruses. This guidance for reporting SARS-CoV-2 sequencing will improve that understanding. Date: 6/22/21

[Operational Considerations for Adapting a Contact Tracing Program to Respond to the COVID-19 Pandemic in non-US Settings](#)

Contact tracing is a key component of controlling transmission of infectious diseases. This document is for CDC country offices, ministries of health, sub-national public health authorities, and other implementing partners in non-US settings. While select adaptations may be relevant for any jurisdiction, the document focuses on adaptations that might be especially useful in low- and middle-income countries. Date: 6/22/21

[Care for Breastfeeding People](#)

Find information on managing breastfeeding patients with confirmed or suspected COVID-19. Date: 6/16/21

[Guidance for Reporting SARS-CoV-2 Sequencing Results](#)

It is critically important for the nation's COVID-19 pandemic response to understand the genetic diversity, spread, and evolution of SARS-CoV-2, including variant viruses. This guidance for reporting SARS-CoV-2 sequencing will improve that understanding. Date: 6/14/21

[Patient History and Physical Exam](#)

Healthcare professionals, find suggested workup for post-COVID conditions. Date: 6/13/21

[General Clinical Considerations](#)

Find general post-COVID care considerations, considerations for follow-up care from hospital admission, and considerations for SARS-CoV-2 infection or mild-to-moderate acute COVID-19 treated in an outpatient setting. Date: 6/13/21

[Background](#)

Healthcare professionals, find background for post-COVID conditions from the detailed guidance on evaluating and caring for patients with post-COVID conditions. Date: 6/13/21

[Assessment and Testing](#)

Healthcare professionals, find information on laboratory testing and other assessment and testing for evaluating and caring for patients with post-COVID conditions. Date: 6/13/21

California Takes Action to Combat COVID-19

<https://www.gov.ca.gov/california-takes-action-to-combat-covid-19/>



State Data

<https://covid19.ca.gov/>
<https://update.covid19.ca.gov/#top>
<https://www.cdph.ca.gov/Programs/CID/DCDC/Pages/Immunization/hcov2019.aspx#>
<https://www.cdph.ca.gov/Programs/CID/DCDC/Pages/COVID-19/CovidDataAndTools.aspx>

“Safer Economy Blueprint”

<https://covid19.ca.gov/safer-economy>

Blueprint for a Safer Economy – COVID-19 and Equity

<https://www.cdph.ca.gov/Programs/CID/DCDC/Pages/COVID-19/CaliforniaHealthEquityMetric.aspx>
<https://covid19.healthypacesindex.org/>
<https://map.healthypacesindex.org/>

Statewide industry guidance to reduce risk

<https://covid19.ca.gov/industry-guidance/#top>
<https://www.cdph.ca.gov/Programs/CID/DCDC/Pages/Guidance.aspx>

Safe Schools for All

<https://schools.covid19.ca.gov/>

CDPH

<https://www.cdph.ca.gov/Programs/CID/DCDC/Pages/DCDC.aspx>

News Releases 2021

<https://www.cdph.ca.gov/Programs/OPA/Pages/News-Releases-2021.aspx>



Office of Governor
GAVIN NEWSOM

Press Releases, Executive Orders, Media Advisories, Proclamations, and “On the Record” Column

<https://www.gov.ca.gov/newsroom/>

Data models

<https://covid19.ca.gov/data-and-tools/>

Cal/OSHA

<https://www.dir.ca.gov/dosh/>
<https://www.dir.ca.gov/oshab/oshab.html>

Vaccines

<https://covid19.ca.gov/vaccines/>
<https://myturn.ca.gov/>

SEE THE NUMBERS

Tracking COVID-19

As of June 28, California has 3,714,051 confirmed cases of COVID-19, resulting in 62,994 deaths.

Cases	Deaths	Tests	Vaccines Administered
3,714,051 Total	62,994 Total	69,442,426 Total	41,371,676 Total
1,256 Today	4 Today	118,346 Today	
↘ 2.0 New cases per 100K	↘ 0.03 New deaths per 100K	↗ 1.2% Test positivity	

Updated June 28, 2021 at 10:00 AM with data from June 27, 2021

Note: Case rate is based on a 7-day average with a 7-day lag. Rates of deaths is based on a 7-day average with a 21-day lag due to delays in reporting. Test positivity is based on a 7-day average with no lag. Directional change is compared to the prior 7-day period. Data is provided by the California Department of Public Health.

Statewide

19,880,275 (58.6%) People fully vaccinated
3,315,970 (9.8%) People partially vaccinated

41,371,676 (86.2%) Doses administered
80,680 Average doses per day

5,476,225 Doses on hand
(68 days of inventory)

48,007,055 Doses Delivered
12,758,500 CDC Pharmacy Doses Delivered

See [Data Dictionary](#) for Details.

Doses Administered by County of Residence

County

Los Angeles	10,569,071
San Diego	3,761,692
Orange	3,451,543
Santa Clara	2,557,523
Alameda	2,072,057
Riverside	2,038,656
San Bernardino	1,679,819
Sacramento	1,481,754
Contra Costa	1,416,897
San Francisco	1,184,030
San Mateo	1,017,132
Ventura	922,100
Fresno	828,070
San Joaquin	626,829
Kern	617,896
Sonoma	598,685
Santa Barbara	465,788
Stanislaus	444,346
Solano	439,714
Monterey	436,586



Data: 6/27/2021 11:59pm | Posted: 6/28/2021



Riverside County Data

<https://www.rivcoph.org/coronavirus>

Total Tests 3,235,470	Confirmed 301,799	Currently Hospitalized 39 Includes 7 in ICU	Deaths 4,627	Recovered 296,375
Current County Risk Level MINIMAL Most indoor business operations open with modifications	New Cases per Day per 100K 1.5 Adjusted for Tier Assignment *Updated Weekly (Tuesdays)*	Positivity Rate 1.1% State-Calculated 7-Day Average *Updated Weekly (Tuesdays)*	Information on State Reopening Metrics Here	Vaccine Information and Data Here

Dashboard -Click [here](#) for more detailed city/community data and reports

RUHS Public Health News:

- Reopening Day [English](#) / [Spanish](#) - June 15, 2021
- Two million COVID-19 vaccines given in Riverside County, plus one, to father-son duo English
- Thousands of homebound residents in Riverside County will now be able to get vaccinated [English](#) / [Spanish](#) - May 21, 2021
- Clinics in Menifee, Beaumont to close as focus shifts to more use of mobile teams to deliver vaccinations [English](#) / [Spanish](#) - May 20, 2021
- Riverside County expands eligibility to those 12 and older for COVID-19 vaccination [English](#) / [Spanish](#) - May 13, 2021
- Vaccine clinic at Hemet shopping mall on hold; Alessandro location to close Friday [English](#) / [Spanish](#) - May 07, 2021

Daily Epidemiology Summary updated 06-22-2021

https://www.rivcoph.org/Portals/0/Documents/CoronaVirus/June2021/Dashboard/Public%20Daily_COVID-19_Updates%20062221.pdf?ver=2021-06-22-141900-443×tamp=1624396754581

Hospitalized COVID-19 Patient Volume in Riverside County 05-27-20201

https://www.rivcoph.org/Portals/0/Documents/CoronaVirus/May2021/Dashboard/5/EMD_COVID-19_Metrics_Public_Dashboard_05-27-2021.pdf?ver=2021-05-28-085423-973×tamp=1622217269243

COVID-19 Vaccine <https://www.rivcoph.org/COVID-19-Vaccine>

RUHS Public Health:

- **Johnson & Johnson Fact Sheet [English](#) / [Spanish](#) - April 26, 2021**
- **Breakthrough Church vaccine clinic [English](#) / [Spanish](#) - March 09, 2021**
- **[Sierra Dawn vaccine clinic in Hemet](#) - March 08, 2021**

Weather

National Weather Service San Diego, California		Weather Threats Outlook						
		12:30 PM Monday, June 28, 2021						
County	Zone	Mon 6/28	Tue 6/29	Wed 6/30	Thu 7/1	Fri 7/2	Sat 7/3	Sun 7/4
San Diego	Beach/Marine	None	None	None	None	None	None	None
	Coast	None	None	None	None	None	None	None
	Valleys	Heat	Heat T-Storms	T-Storms	T-Storms	None	None	None
	Mountains	Heat Fire Weather	Heat T-Storms	T-Storms	T-Storms	None	Heat	Heat
	Deserts	Heat Fire Weather	Heat T-Storms	T-Storms	T-Storms	Heat	Heat	Heat
Orange	Beach	None	None	None	None	None	None	None
	Coast	None	None	None	None	None	None	None
	Inland	Heat	None	None	None	None	None	None
	Mountains	Heat	None	None	None	None	None	None
Riverside	Inland Empire	Heat	Heat T-Storms	T-Storms	T-Storms	None	None	None
	Mountains	Heat Fire Weather	Heat T-Storms	T-Storms	T-Storms	None	Heat	Heat
	Desert	Heat Fire Weather	Heat T-Storms	T-Storms	T-Storms	Heat	Heat	Heat
San Bernardino	Inland Empire	Heat	Heat T-Storms	T-Storms	T-Storms	None	None	None
	Mountains	Heat Fire Weather	Heat T-Storms	T-Storms	T-Storms	None	Heat	Heat
	Desert	Heat Fire Weather	Heat T-Storms	T-Storms	T-Storms	Heat	Heat	Heat

Impact Threat Levels: None (Green), Low (Yellow), Medium (Orange), High (Red), Extreme (Purple)

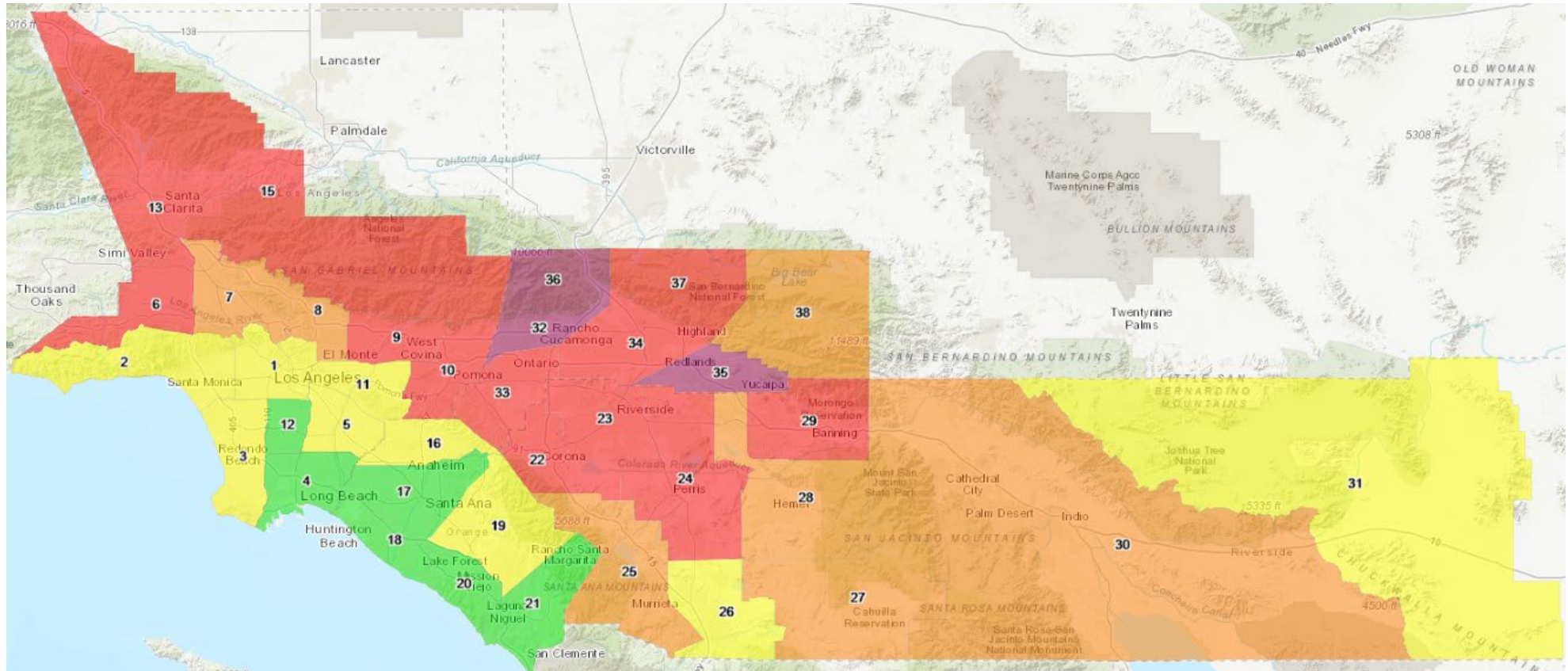
Latest hazard threat table: <https://www.wrh.noaa.gov/sqx/event/dsstable.php>

<https://www.weather.gov/forecastpoints#>



Today's Forecast

<https://www.arcgis.com/apps/webappviewer/index.html?id=85c7770bac684749a631bd7b42eac1b7>



Legend

The Air Quality Index (AQI) is an index for reporting daily air quality that conveys how air pollution can affect public health. The AQI is divided into six levels of health concern:

- AQI Value
- 301-500: Hazardous
 - 201-300: Very Unhealthy
 - 151-200: Unhealthy
 - 101-150: Unhealthy for Sensitive Groups
 - 51-100: Moderate
 - 0-50: Good