



**\*\*Extraordinary Assumptions:** There are a lot of different data sources in this report not all of them match but aid to provide an overall picture of the current situation. COVID-19 Data Source Comparison - [https://covid-19.splunkforgood.com/covid\\_19\\_datasource\\_comparison](https://covid-19.splunkforgood.com/covid_19_datasource_comparison)

# Daily Situation Summary

## Tuesday, March 16, 2021

### As of 10:00 AM



### COVID-19 by the Numbers

3/16/2021	Riverside	Imperial	Kern	Los Angeles*	Orange	San Bernardino	San Diego	San Luis Obispo	Santa Barbara	Ventura	California	United States	Global
Total Cases	281,367	27,122	93,266	1,172,445	247,697	283,815	265,646	19,813	32,529	78,626	3,530,055	203,852,944	119,960,700
New Cases	35	0	14	345	41	24	178	7	15	15	1,260	49,867	327,255
Total Cases Per Capita	11,400	14,152	10,058	11,430	7,672	12,799	7,882	4,341	7,331	9,220	8,797	61,755	1,549
New Cases Per Capita	1.42	0.00	1.51	3.36	1.27	1.08	5.28	1.53	3.38	1.76	3.14	15.11	4.23
Recovered	<a href="#">284,167</a>	<a href="#">24,078</a>	<a href="#">37,570</a>	Not Reported	<a href="#">239,472</a>	<a href="#">283,890</a>	<a href="#">257,173</a>	<a href="#">19,457</a>	<a href="#">32,006</a>	<a href="#">77,396</a>	<a href="#">1,907,025</a>	<a href="#">22,291,236</a>	<a href="#">97,577,701</a>
Total Deaths	3,856	684	1,141	22,477	4,481	4,004	3,452	247	431	910	55,372	533,057	2,656,822
New Deaths	11	-1	0	1	21	8	0	0	0	0	42	702	6,668
Deaths Per Capita	156.23	356.90	123.05	219.13	138.79	180.57	102.42	54.12	97.13	106.71	137.98	161.48	34.30
% of State's Cases	7.97%	0.77%	2.64%	33.21%	7.02%	8.04%	7.53%	0.56%	0.92%	2.23%	1.73%	169.93%	
Currently in Hospitals	188	14	98	857	216	185	286	7	40	73	3,058		
Total Hospital Beds	3,136	234	1,116	19,133	5,709	3,530	6,461	460	603	1,139	65,078		
Currently in ICU	42	7	27	271	62	46	88	0	15	22	827		
ICU Beds Available	98	4	52	622	262	156	286	26	38	44	2,303		
Case Fatality Rate	1.37%	2.52%	1.22%	1.92%	1.81%	1.41%	1.30%	1.25%	1.32%	1.16%	1.57%	0.26%	2.21%
COVID Molecular Tests Reported	4,089	33	1,329	105,930	5,937	3,327	4,523	439	626	1,508	167,229		
Population*	2,468,145	191,649	927,251	10,257,557	3,228,519	2,217,398	3,370,418	456,373	443,738	852,747	40,129,160	330,100,590	7,745,123,000
% of Population	6.15%	0.48%	2.31%	25.56%	8.05%	5.53%	8.40%	1.14%	1.11%	2.13%	1.07%	2.6320%	

Sources: CDPH, WHO, CDC, Local County Data

The date for which case statistics and hospital data were reported. Hospital COVID data are self-reported through a portal managed by the California Hospital Association and pulled at 2pm. COVID case statistics are reported by local health departments to CalREDIE and are pulled at 2pm. Hospital data and case statistics are integrated by the California Department of Technology and made available through the Open Data Portal the following morning. CA Open Data Portal is at least 24 Hours behind although a backlog of new case reports at the State level has ostensibly been cleared, some County dashboards still contain notes that indicate data are missing. \*California Demographics from State Database Blueprint Data Chart 12-15-20 & census.gov . Presumptive active cases - A calculation (Total Cases - Recovered - Dead) (\* LA County does not report recovery rates)

#### News

More detail on page 2

#### US Data

More detail on page 4

#### State Data

More detail on page 14

#### Riverside County Data

More detail on page 17

#### Weather

More detail on page 19

**News** – The collection of news articles is related to COVID-19. The inclusion or order of articles is not intended to reflect their importance, nor is it intended to endorse the political viewpoints or affiliations included in news coverage.

### **WHO Points To Wildlife Farms In Southern China As Likely Source Of Pandemic (3 Min Listen)**

- China shut down those wildlife farms in February 2020, says [Peter Daszak](#), a disease ecologist with EcoHealth Alliance and a member of the WHO delegation that traveled to China this year. During that trip, Daszak says, the WHO team found new evidence that these wildlife farms were supplying vendors at the Huanan Seafood Wholesale Market in Wuhan with animals.
- "China promoted the farming of wildlife as a way to alleviate rural populations out of poverty," Daszak says. The farms helped the government meet ambitious goals of closing the rural-urban divide, as NPR reported last year.
- "It was very successful," Daszak says. "In 2016, they had 14 million people employed in wildlife farms, and it was a \$70 billion industry."

<https://www.npr.org/sections/goatsandsoda/2021/03/15/977527808/who-points-to-wildlife-farms-in-southwest-china-as-likely-source-of-pandemic>

### **France investigating new coronavirus variant detected in Brittany**

- A new coronavirus variant has been found in the French region of Brittany, the French health ministry said in a statement late Monday, adding that an initial analysis did not show this new variant to be more serious or more transmissible than others.

<https://www.france24.com/en/france/20210316-france-investigating-new-coronavirus-variant-detected-in-brittany>

### **Moderna Gives First Vaccine Shots To Young Kids As Part Of COVID-19 Study**

- Children have now received their first doses of Moderna's COVID-19 vaccine, as the company studies the safety and effectiveness of the vaccine for kids ages 6 months to less than 12 years old.
- In the study, researchers will give two injections 28 days apart of either the Moderna or a saline placebo to children. Kids who get the vaccine will receive one of three possible doses, from 25 micrograms up to 100 micrograms – the same dose that received an emergency authorization for use in adults from the Food and Drug Administration.
- Moderna plans to enroll roughly 6,750 children in the U.S. and Canada for the study, which is taking place at sites in at least eight states, from Arizona and California to South Carolina and Texas.

<https://www.npr.org/sections/coronavirus-live-updates/2021/03/16/977778462/moderna-gives-first-vaccine-shots-to-young-kids-as-part-of-covid-19-study>

### **California's colleges and universities will receive \$5 billion from federal rescue plan**

- California higher education leaders are celebrating President Joe Biden's signing of the American Rescue Plan Act and the resulting \$5 billion that is expected to benefit the state's colleges and students. Some public university campuses in the state will each receive more than \$100 million, with CSU Northridge expected to be on top with about \$131 million.
- Half of the funds are supposed to directly help students with college costs and basic needs including housing and health care. The other half will help schools defray lost revenue due to declining enrollments, cover costs of shifting to online learning, and help pay for Covid-19 testing, vaccinations and related safety measures.
- The state's 116 community colleges are expected to receive about \$2.2 billion total and an estimated \$1.49 billion total is headed to the 23-campus California State University, officials said.

<https://edsource.org/2021/californias-colleges-and-universities-receive-5-billion-from-federal-rescue-plan/650981>

## CVS Adds 119 More Coronavirus Vaccine Sites In California

- As the Golden State continues to expand its vaccine rollout, CVS will join in the effort by opening up 119 more pharmacy locations for residents to get inoculated.
- CVS Health was set to start offering shots as early as Sunday in CVS Pharmacy storefronts across the state. Californians were able to start making appointments Saturday as more stores receive the latest shipments of vaccines.
- These 119 locations add to the 167 stores previously made into inoculation centers in the state, bringing the total number of CVS Pharmacy locations offering shots up to 286, according to the company.

<https://patch.com/california/los-angeles/cvs-adds-119-more-coronavirus-vaccine-sites-california>

## Riverside County's COVID Hospitalizations Drop to Four-Month Low Ahead of Reopening Tier Change

- COVID-positive hospitalizations in Riverside County have declined significantly as the county prepares for its move into a less restrictive tier of California's reopening system.
- Hospitalizations have dropped below 200, reaching a four-month low ahead of the county's anticipated move Tuesday into the state's red tier. According to the Riverside University Health System, patients diagnosed with coronavirus numbered 195 as of Monday, compared to 234 on Friday.
- The county Tuesday is slated to officially move into the red tier and out of the most restrictive purple tier of the governor's "[Blueprint for a Safer Economy](#)" framework. Under the new designation, indoor operations will be permitted to resume at gyms, zoos, museums, movie theaters, places of worship and other facilities, with capacity restrictions.

<https://www.nbclosangeles.com/news/coronavirus/southern-california-coronavirus/coronavirus-hospitalizations-riverside-county-covid-19-red-purple-tier-reopening/2551324/>

RELATED

## RivCo Readies For Red Tier: Indoor Dining, Open Schools

[https://patch.com/california/lakeelsinore-wildomar/s/hgwby/rivco-readies-for-red-tier-indoor-dining-open-schools?utm\\_term=article-slot-1&utm\\_source=newsletter-daily&utm\\_medium=email&utm\\_campaign=newsletter](https://patch.com/california/lakeelsinore-wildomar/s/hgwby/rivco-readies-for-red-tier-indoor-dining-open-schools?utm_term=article-slot-1&utm_source=newsletter-daily&utm_medium=email&utm_campaign=newsletter)

## Riverside, Moreno Valley, Norco colleges to resume on-campus classes in fall

- The majority of classes offered at Moreno Valley, Norco and Riverside City colleges will be taught on campus in fall semester, which begins Aug. 23, the schools announced Monday, March 15.
- "This shift from online and hybrid classes back to the classroom is very important to college students and faculty," said Wolde-Ab Isaac, chancellor of the Riverside Community College District, which runs the schools.
- "While some students excel in the online environment, we recognize that many subjects require face-to-face interaction or hands-on experimentation to optimize learning and skills development," Isaac said in a news release.
- Preparations are being made for their return. For instance, plastic and Plexiglas shields are being installed in classrooms and other meeting spaces, Clarke said. Improvements are being made to air-circulation systems. "We are ready for a return to our campuses," Isaac said.
- Officials decided to return because of declining coronavirus infections and increasing vaccination rates, while following a plan developed by a district task force, Clarke said.
- When students and faculty return to campus in fall, they will be expected to follow the latest public health guidelines, such as keeping a safe distance from others and washing hands frequently, the news release said.
- "Masks will continue to be required," Clarke wrote.

<https://www.pe.com/2021/03/15/riverside-moreno-valley-norco-colleges-to-resume-on-campus-classes-in-fall/>

[http://www.rcc.edu/about/news/fall\\_return\\_inperson\\_instruction.html](http://www.rcc.edu/about/news/fall_return_inperson_instruction.html)



# U.S. Data

[https://covid.cdc.gov/covid-data-tracker/#cases\\_casesper100klast7days](https://covid.cdc.gov/covid-data-tracker/#cases_casesper100klast7days)

## United States COVID-19 Cases and Deaths by State

Reported to the CDC since January 21, 2020



<https://covid.cdc.gov/covid-data-tracker/#vaccinations>

## COVID-19 Vaccinations in the United States

Total Vaccine Doses		People Vaccinated	At Least One Dose	Fully Vaccinated
Delivered	142,918,525	Total	72,135,616	39,042,345
Administered	110,737,856	% of Total Population	21.7%	11.8%
Learn more about the <a href="#">distribution of vaccines.</a>		Population ≥ 18 Years of Age	71,982,973	38,992,039
		% of Population ≥ 18 Years of Age	27.9%	15.1%
		Population ≥ 65 Years of Age	35,344,640	20,028,351
		% of Population ≥ 65 Years of Age	64.6%	36.6%
		Read more about how these <a href="#">data are reported.</a>		

CDC | Data as of: Mar 16 2021 6:00am ET | Posted: Mar 16 2021 12:26PM ET

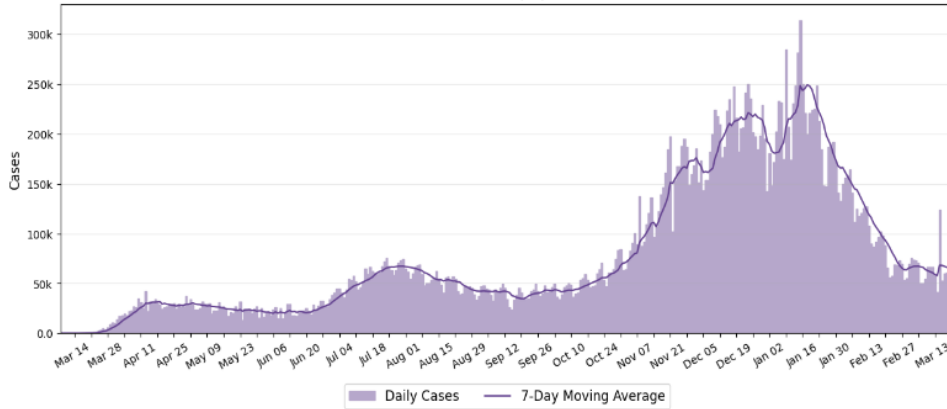
# COVID-19 Community Profile Report 03-15-2021

<https://beta.healthdata.gov/Health/COVID-19-Community-Profile-Report/gqxm-d9w9>

## NATIONAL TIME SERIES

**New Cases**

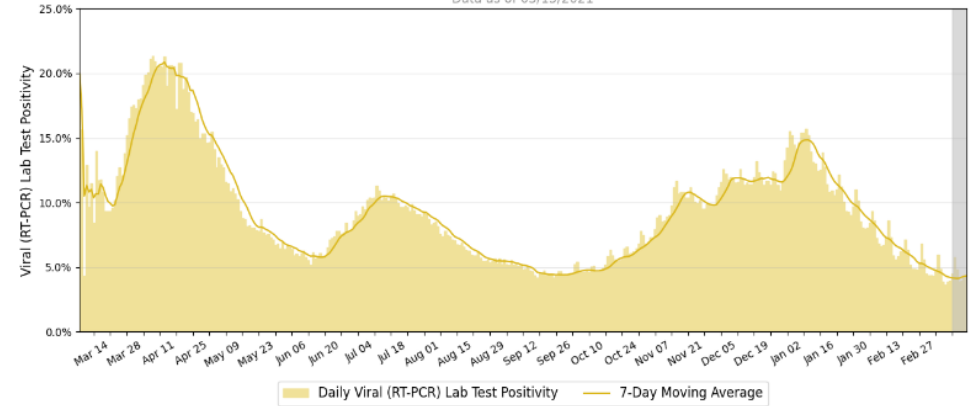
Data as of 03/15/2021



**Viral (RT-PCR) Lab Test Positivity**

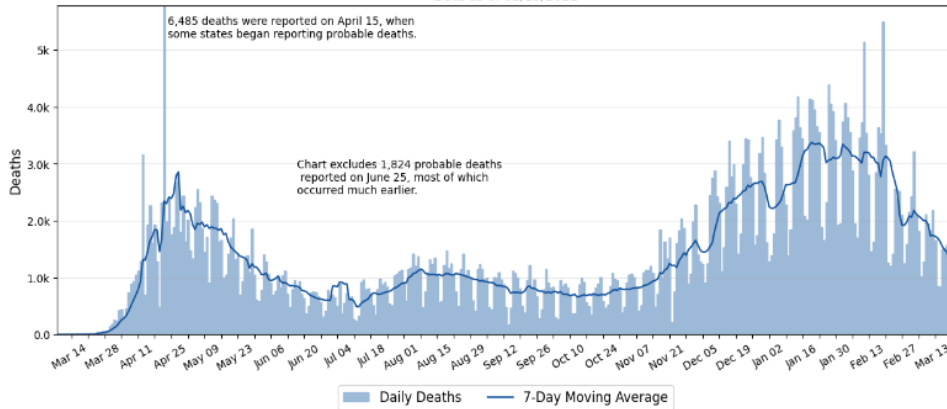
Data as of 03/15/2021

Incomplete Reporting



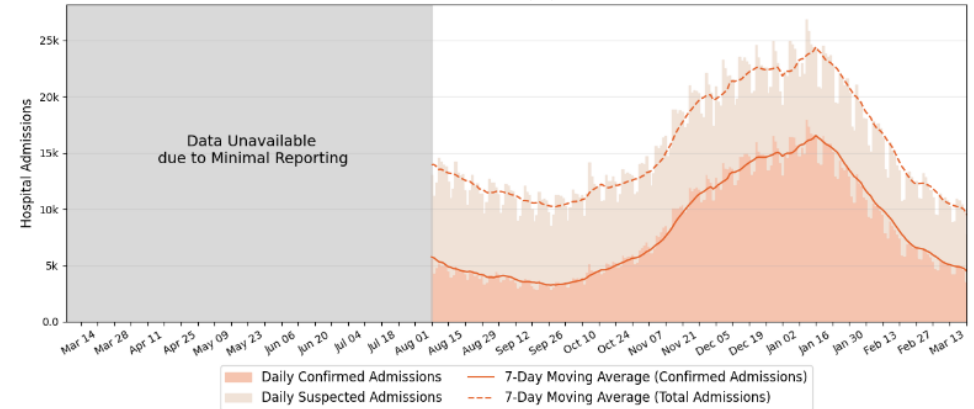
**New Deaths**

Data as of 03/15/2021



**New Hospital Admissions**

Data as of 03/15/2021



Source: CDC state-reported data (cases and deaths), Unified Testing Dataset, Unified Hospital Dataset.

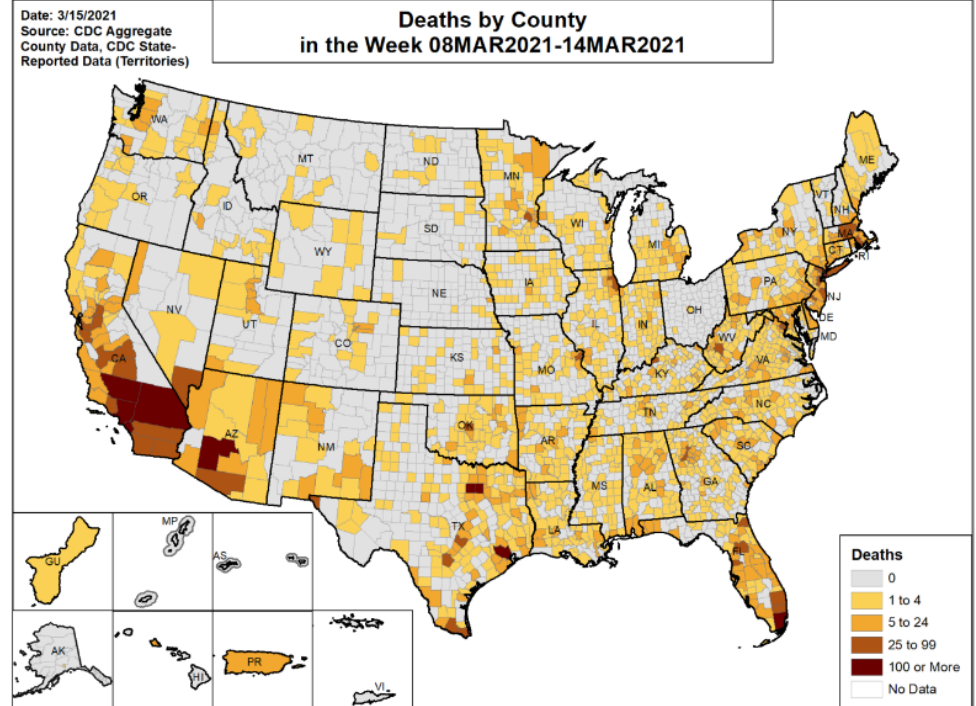
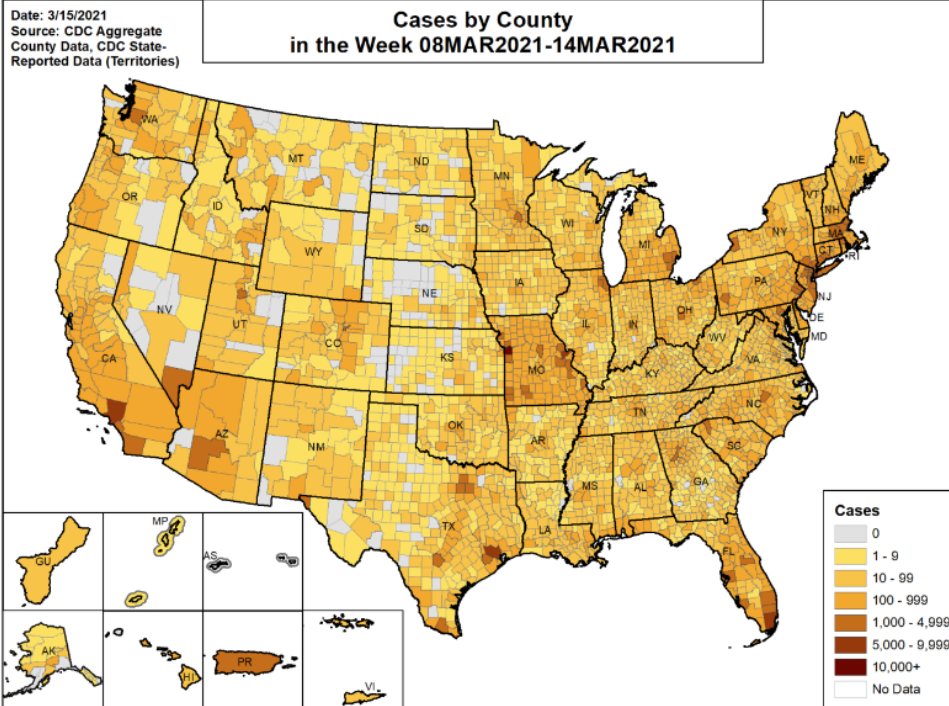
INITIAL PUBLIC RELEASE // SUBJECT TO CHANGE



# NUMBER OF NEW CASES AND DEATHS IN THE LAST 7 DAYS

**Total Cumulative Cases:** 29,269,590  
**New Cases in Last 7 Days:** 454,073  
**Percent Change from Previous 7 Days:** +12.2%

**Total Cumulative Deaths:** 532,355  
**New Deaths in Last 7 Days:** 8,489  
**Percent Change from Previous 7 Days:** -28.6%

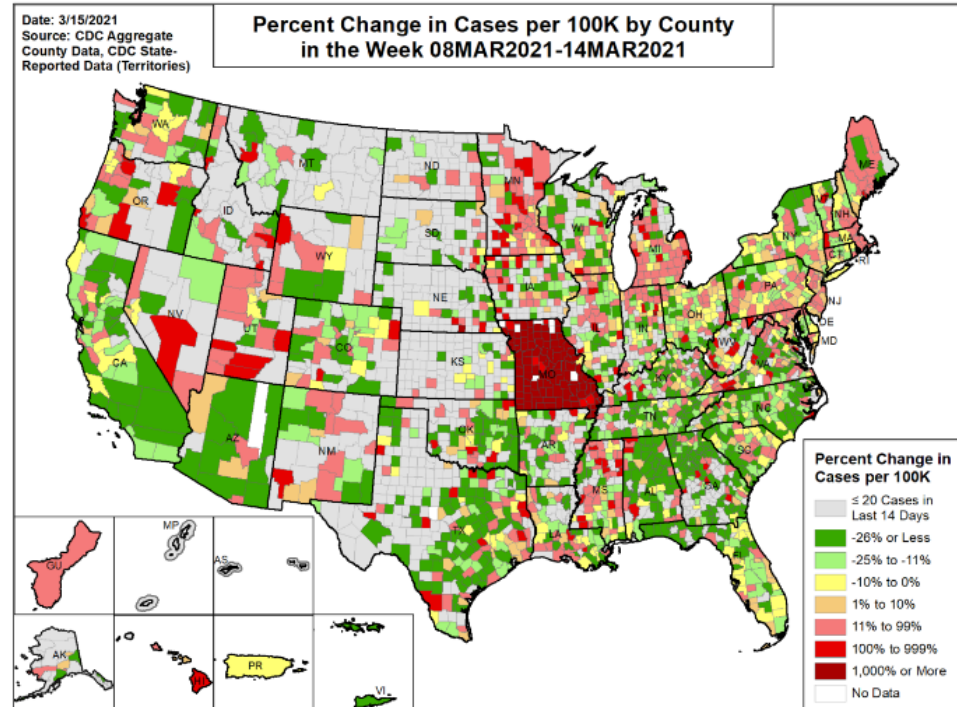
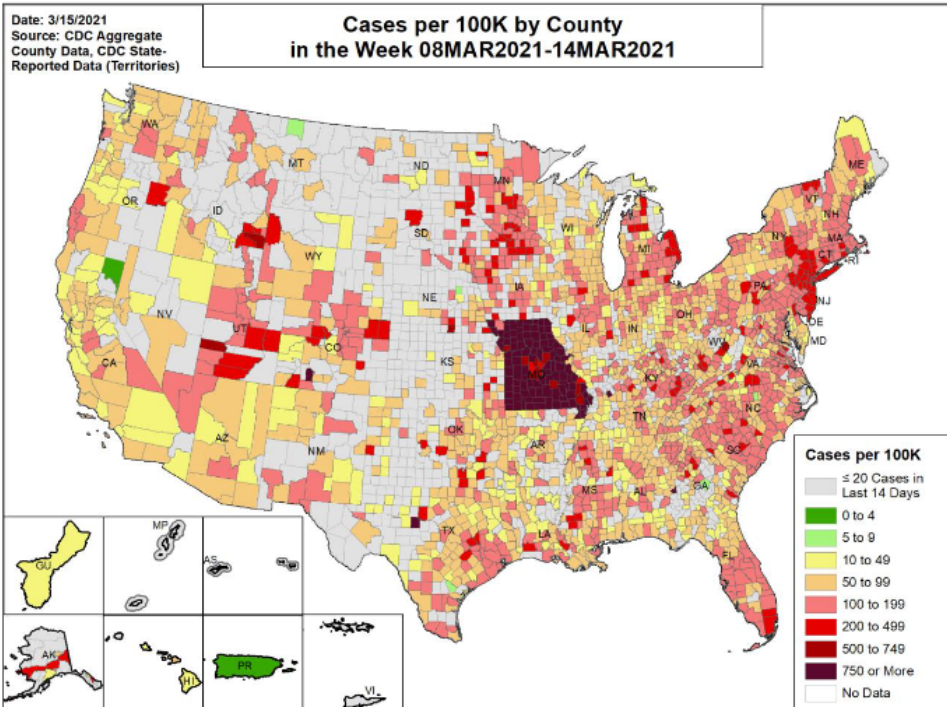


Missouri data includes a backlog of 81,608 probable cases in the current 7-day window due to the addition of antigen case reporting.

# CASE INCIDENCE IN LAST 7 DAYS AND COMPARISON TO THE PREVIOUS 7 DAYS

Incidence Rate in the Last 7 Days: 136.8 per 100,000

Percent Change from Previous 7 Days: +12.2%



Missouri data includes a backlog of 81,608 probable cases in the current 7-day window due to the addition of antigen case reporting.

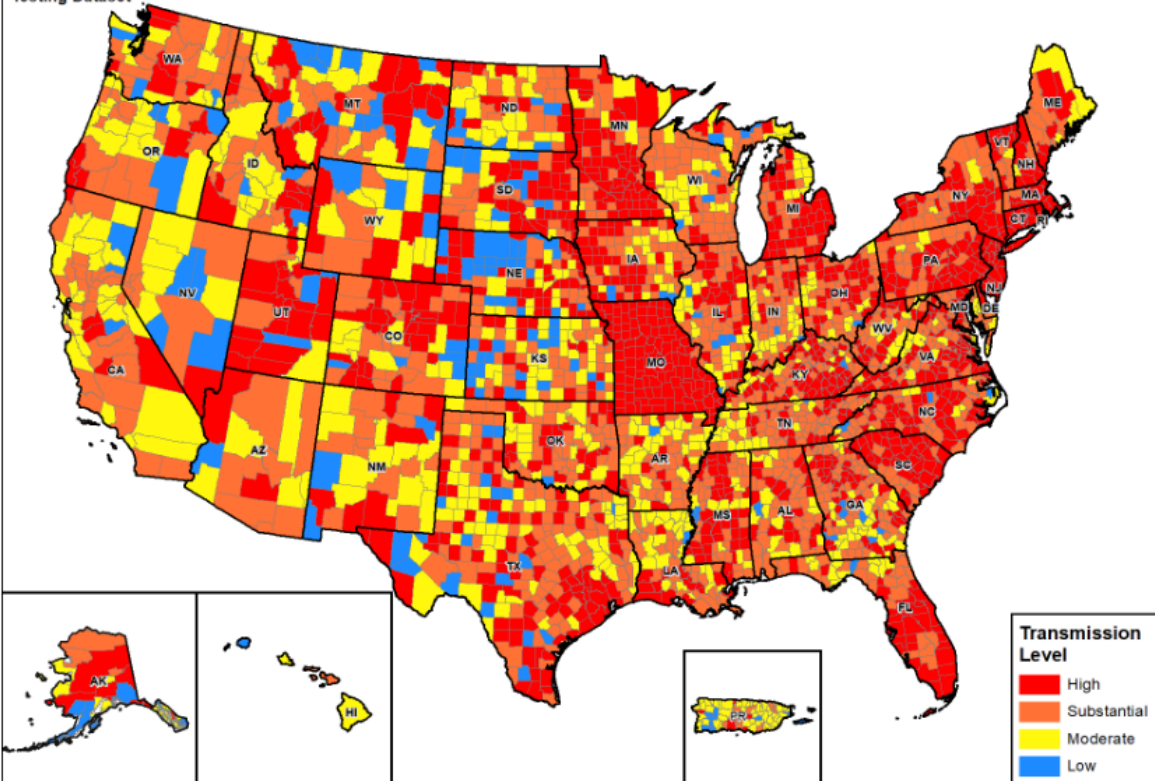
INITIAL PUBLIC RELEASE // SUBJECT TO CHANGE



# COMMUNITY TRANSMISSION LEVEL

Date: 3/15/2021  
 Source: CDC Aggregate  
 County Data, Unified  
 Testing Dataset

## Community Transmission Level by County 14MAR2021



Source: CDC Aggregate County Dataset (cases), Unified Testing Dataset (tests)

Notes: Combined Transmission Level is the higher threshold among cases and testing thresholds.

Missouri data includes a backlog of 81,608 probable cases in the current 7-day window due to the addition of antigen case reporting.

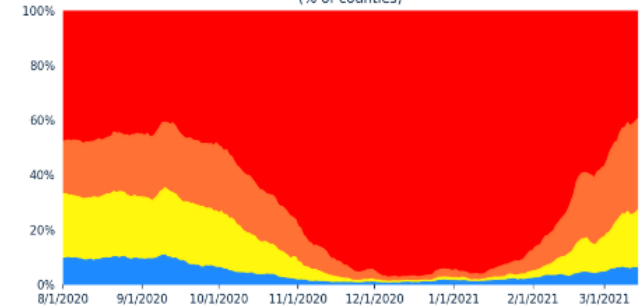
### Counties by Community Transmission Indicator

Cases per 100k	0 to 9	10 to 49	50 to 99	100 +
# of counties (change)	206 (↓9)	737 (↑78)	1122 (↑68)	1155 (↓137)
% of counties (change)	6.4% (↓0.3%)	22.9% (↑2.4%)	34.8% (↑2.1%)	35.9% (↓4.3%)
<b>Test Positivity</b>	0.0% to 4.9%	5.0% to 7.9%	8.0% to 9.9%	10.0% +
# of counties (change)	1960 (↑130)	716 (↓14)	225 (↓44)	319 (↓72)
% of counties (change)	60.9% (↑4.0%)	22.2% (↓0.4%)	7.0% (↓1.4%)	9.9% (↓2.2%)

### Counties by Combined Transmission Level

Category	Low Transmission Blue	Moderate Transmission Yellow	Substantial Transmission Orange	High Transmission Red
# of counties (change)	189 (↑3)	679 (↑78)	1073 (↑85)	1279 (↓166)
% of counties (change)	5.9% (↑0.1%)	21.1% (↑2.4%)	33.3% (↑2.6%)	39.7% (↓5.2%)

Change in Combined Transmission Levels Over Time  
 (% of counties)



INITIAL PUBLIC RELEASE // SUBJECT TO CHANGE

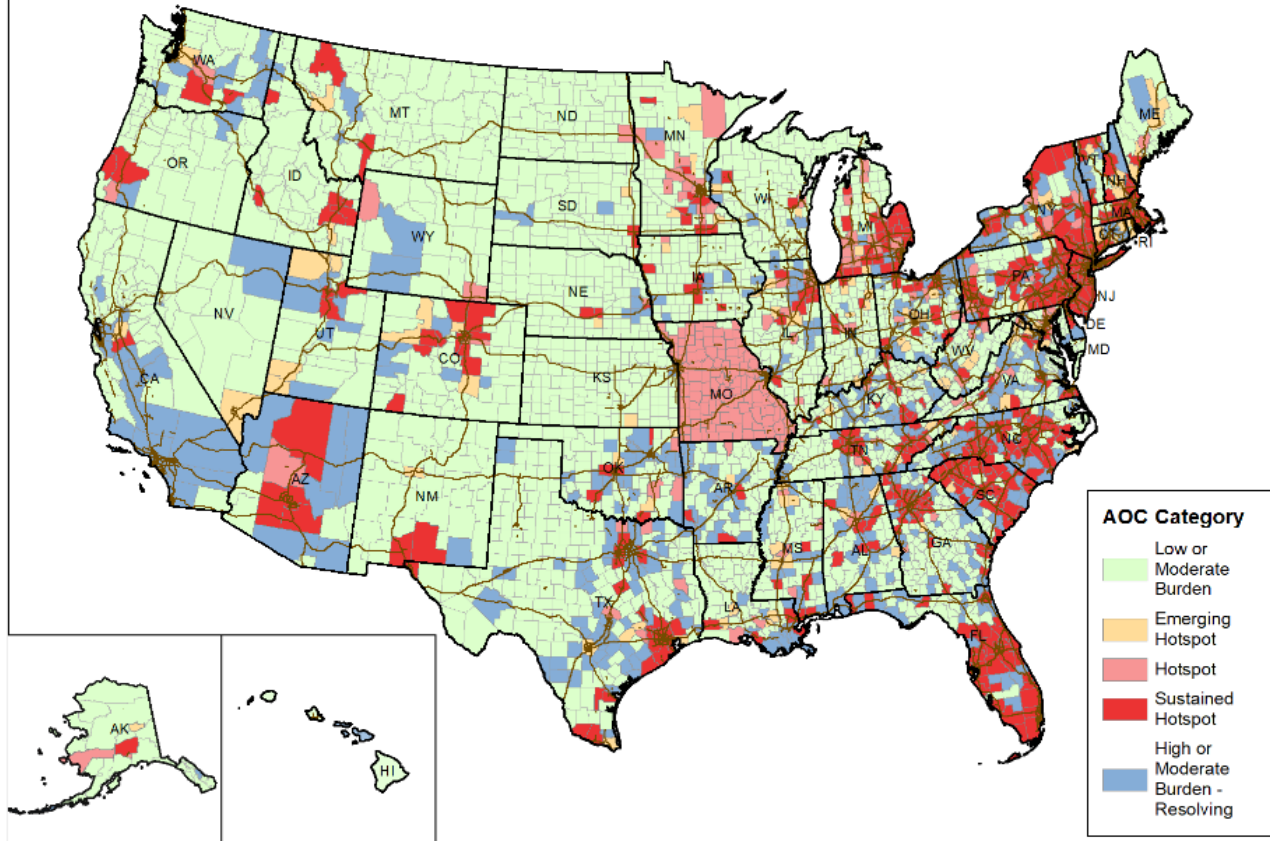




# AREA OF CONCERN CONTINUUM

Date: 3/15/2021

## Area of Concern Continuum by County 14MAR2021

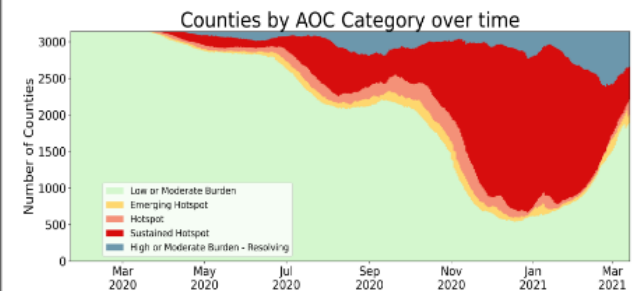


Missouri data includes a backlog of 81,608 probable cases in the current 7-day window due to the addition of antigen case reporting.

The Areas of Concern Continuum (AOCC) is used to describe communities as they progress through stages of the epidemic. There are 7 possible AOC classifications based on current and recent history of case and testing data for the location:

- (1) **Low Burden** – communities with minimal activity
- (2) **Moderate Burden** – communities with moderate disease activity
- (3) **Emerging Hotspot** – communities with a high likelihood to become hotspots in the next 1-7 days
- (4) **Hotspot** – communities that have reached a threshold of disease activity considered as being of high burden
- (5) **Sustained Hotspot** – communities that have had a high sustained case burden and may be higher risk for experiencing healthcare resource limitations
- (6) **High Burden – Resolving** – communities that were recently identified as hotspots and are now improving
- (7) **Moderate Burden – Resolving** – communities that have a moderate level of burden, but are demonstrating improvement

See Data Sources/Methods slides for more information.



INITIAL PUBLIC RELEASE // SUBJECT TO CHANGE



# AREA OF CONCERN CONTINUUM - RAPID RISER COUNTIES

Date: 3/15/2021  
 Source: CDC Aggregate County Data

## Counties with Rapid Rise in Cases in the Last 14 Days

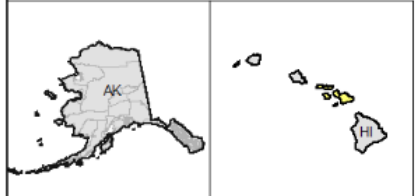
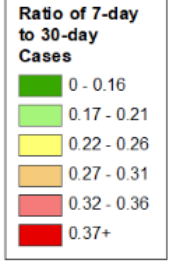
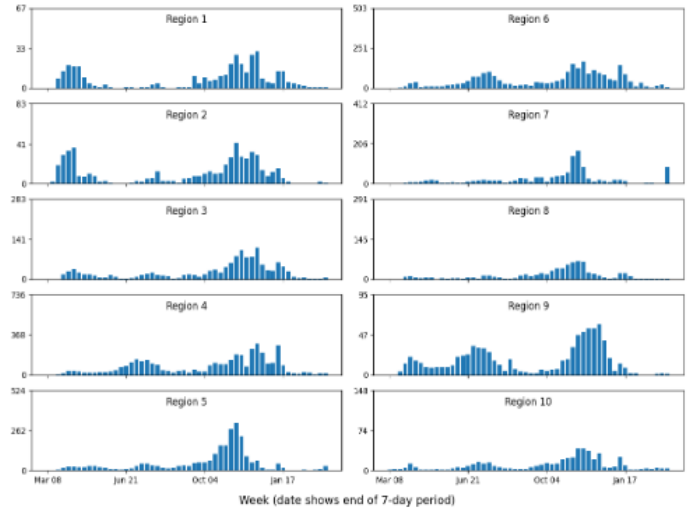
This map shows counties that have seen a rapid rise in cases within the last 14 days by meeting the following **Rapid Riser County** criteria:

- >100 new cases in last 7 days
- >0% change in 7-day incidence
- >-60% change in 3-day incidence
- 7-day incidence / 30-day incidence ratio >0.31
- one or both of the following triggering criteria:
  - (a) >60% change in 3-day incidence,
  - (b) >60% change in 7-day incidence

The color indicates *current* acceleration in cases (ratio of 7-day to 30-day cases). Counties in **light red** and **red** are continuing to see accelerating cases in the most recent week, while those in **dark green** and **green** may have seen declines in the most recent week.

The bar charts below show the history of rapid riser counties by FEMA region and week, indicating when different geographic areas have seen the greatest acceleration in cases.

**# of Distinct Rapid Riser Counties by Week and FEMA Region**  
 (vertical axis scaled to number of counties in region)



Missouri data includes a backlog of 81,608 probable cases in the current 7-day window due to the addition of antigen case reporting.

**INITIAL PUBLIC RELEASE // SUBJECT TO CHANGE**



# TRENDS IN CASE INCIDENCE DURING THE LAST 8 WEEKS



## Case incidence categories

(based on cases per 100,000 population in the last 7 days)



## Weekly % change categories

(arrow based on % change in weekly cases)



Figure depicts average case incidence for each state and region over the 8-week period of 1/18-3/14. Vertical axis ranges from 0 to 1,539 cases per 100,000 population (7 day total).

Source: CDC state-reported data. See Data Sources/Methods slides for additional details.

INITIAL PUBLIC RELEASE // SUBJECT TO CHANGE



## CDC What's New

<https://www.cdc.gov/coronavirus/2019-ncov/whats-new-all.html>

- [3/16/21 Cases in the U.S.](#)
- [3/16/21 Overall US COVID-19 Vaccine Distribution and Administration Update as of Tue, 16 Mar 2021 06:00:00 EST](#)
- [3/15/21 Communication Resources for COVID-19 Vaccines](#)
- [3/15/21 Selected Adverse Events Reported after COVID-19 Vaccination](#)
- [3/15/21 Workplace Vaccination Program](#)
- [3/15/21 Crew Disembarkations through Commercial Travel](#)
- [3/15/21 EARLY RELEASE: Effectiveness of the Pfizer-BioNTech COVID-19 Vaccine Among Residents of Two Skilled Nursing Facilities Experiencing COVID-19 Outbreaks - Connecticut, December 2020-February 2021](#)
- [3/15/21 EARLY RELEASE: COVID-19 Vaccine Second-Dose Completion and Interval Between First and Second Doses Among Vaccinated Persons - United States, December 14, 2020-February 14, 2021](#)
- [3/14/21 v-safe COVID-19 Vaccine Pregnancy Registry](#)
- [3/14/21 Staffing Resources](#)
- [3/14/21 Guidance for COVID-19](#)
- [3/14/21 Healthcare Facilities That Have Implemented COVID-19 Electronic Case Reporting](#)
- [3/14/21 COVID-19 Electronic Laboratory Reporting Implementation by State](#)
- [3/14/21 People with Certain Medical Conditions](#)
- [3/14/21 Coronavirus Disease 2019 \(COVID-19\)](#)
- [3/14/21 People at Increased Risk](#)
- [3/14/21 COVID-19 Travel Recommendations by Country](#)
- [3/12/21 Essential Workers & Employees: When & How to Get Vaccinated](#)
- [3/12/21 COVID-19 Vaccines for People at Increased Risk for Severe Illness from COVID-19](#)
- [3/12/21 What Older Adults Need to Know about COVID-19 Vaccines](#)
- [3/12/21 Key Things to Know About COVID-19 Vaccines](#)
- [3/12/21 What to Expect at Your Appointment to Get Vaccinated for COVID-19](#)
- [3/12/21 Cases & Deaths by County](#)
- [3/11/21 Step Two: Plan for the Assessment](#)
- [3/11/21 Step Three: Collect and Analyze Data](#)
- [3/11/21 Step Four: Report Findings and Identify Solutions](#)
- [3/11/21 Step Five: Evaluate Your Efforts](#)
- [3/11/21 COVID-19 Science Update released: March 12, 2021 Edition 80](#)
- [3/11/21 COVID-19 vaccination and other medical procedures](#)
- [3/11/21 COVID-19 Child Care Program Symptom Screening Flowchart](#)
- [3/11/21 Considerações Operacionais para a Identificação de Profissionais de Saúde e Doentes Internados com Suspeita de COVID-19 em Contextos de Cuidados de Saúde Fora dos EUA](#)
- [3/11/21 Recommandations sur l'identification des cas suspects de COVID-19 chez le personnel soignant et les patients hospitalisés](#)

## CDC Guidance

<https://www.cdc.gov/coronavirus/2019-ncov/communication/guidance-list.html?Sort=Date%3A%3Adesc>

### [Overview of Testing for SARS-CoV-2 \(COVID-19\)](#)

Summary of considerations and current CDC recommendations regarding SARS-CoV-2 testing. Date: 3/16/21

### [Interim Guidance for SARS-CoV-2 Testing in Correctional and Detention Facilities](#)

This document is intended to provide considerations on the appropriate use of testing and does not dictate the determination of payment decisions or insurance coverage of such testing, except as may be otherwise referenced (or prescribed) by another entity or federal or state agency. Date: 3/15/21

### [Interim Guidance for SARS-CoV-2 Testing in Non-Healthcare Workplaces](#)

The purpose of this document is to provide employers with strategies for consideration of incorporating testing for SARS-CoV-2, the virus that causes COVID-19, into a workplace COVID-19 preparedness, response, and control plan. Date: 3/15/21

### [Interim Guidance for SARS-CoV-2 Testing in Homeless Shelters and Encampments](#)

Testing Considerations in Homeless Shelters & Encampments Date: 3/15/21

### [Interim Guidance for SARS-CoV-2 Testing and Screening at Institutions of Higher Education \(IHEs\)](#)

Monitor and evaluate wearing masks as a community mitigation strategy for COVID-19 with CDC's action guide. Date: 3/15/21

### [Guidance for COVID-19](#)

CDC COVID-19 Guidance Documents Date: 3/14/21

### [Guidance for Operating Child Care Programs during COVID-19](#)

This information is intended for child care programs that remain open, and should be used in conjunction with CDC's guidance for administrators of child care programs and K-12 schools. This guidance does not supersede state and local laws and policies for child care programs. Date: 3/11/21

### [Testing Strategies for SARS-CoV-2](#)

This guidance describes and compares different types of SARS-CoV-2 (the virus that causes COVID-19) testing strategies, including their intended use and applications, regulatory requirements, and reporting requirements. Date: 3/10/21

### [COVID-19 - Aperçu et priorités en matière de prévention et de contrôle des infections dans les structures sanitaires basées en dehors des États-Unis](#)

Cet aperçu a été créé à l'intention du personnel santé dans les établissements de santé hors des États-Unis et des responsables gouvernementaux travaillant sur la réponse à la maladie à coronavirus 2019 (COVID-19). Date: 3/10/21

### [Interim Guidance for Homeless Service Providers to Plan and Respond to Coronavirus Disease 2019 \(COVID-19\)](#)

COVID-19 Videos, Social Media, PSAs, Print & Web Resources, Checklists, and FAQs to help colleges and universities protect students, faculty and staff. Date: 3/10/21

### [Interim U.S. Guidance for Risk Assessment and Work Restrictions for Healthcare Personnel with Potential Exposure to SARS-CoV-2](#)

Find CDC's guidance on assessing, monitoring, and restricting risk for those who work in healthcare facilities during COVID-19. Date: 3/10/21

### [COVID-19 - Aperçu et priorités en matière de prévention et de contrôle des infections dans les structures sanitaires basées en dehors des États-Unis](#)

Cet aperçu a été créé à l'intention du personnel santé dans les établissements de santé hors des États-Unis et des responsables gouvernementaux travaillant sur la réponse à la maladie à coronavirus 2019 (COVID-19). Date: 3/10/21

# California Takes Action to Combat COVID-19

<https://www.gov.ca.gov/california-takes-action-to-combat-covid-19/>



## State Data

<https://covid19.ca.gov/>  
<https://update.covid19.ca.gov/#top>  
<https://www.cdph.ca.gov/Programs/CID/DCDC/Pages/Immunization/ncov2019.aspx#>  
<https://www.cdph.ca.gov/Programs/CID/DCDC/Pages/COVID-19/CovidDataAndTools.aspx>

## “Safer Economy Blueprint”

<https://covid19.ca.gov/safer-economy>

## Blueprint for a Safer Economy – COVID-19 and Equity

<https://www.cdph.ca.gov/Programs/CID/DCDC/Pages/COVID-19/CaliforniaHealthEquityMetric.aspx>  
<https://covid19.healthyplacesindex.org/>  
<https://map.healthyplacesindex.org/>

## Statewide industry guidance to reduce risk

<https://covid19.ca.gov/industry-guidance/#top>  
<https://www.cdph.ca.gov/Programs/CID/DCDC/Pages/Guidance.aspx>

## Safe Schools for All

<https://schools.covid19.ca.gov/>



Office of Governor  
**GAVIN NEWSOM**

Press Releases, Executive Orders, Media Advisories,  
Proclamations, and “On the Record” Column

<https://www.gov.ca.gov/newsroom/>

## Data models

<https://covid19.ca.gov/data-and-tools/>

## Cal/OSHA

<https://www.dir.ca.gov/dosh/>

## Vaccines

<https://covid19.ca.gov/vaccines/>  
<https://myturn.ca.gov/>

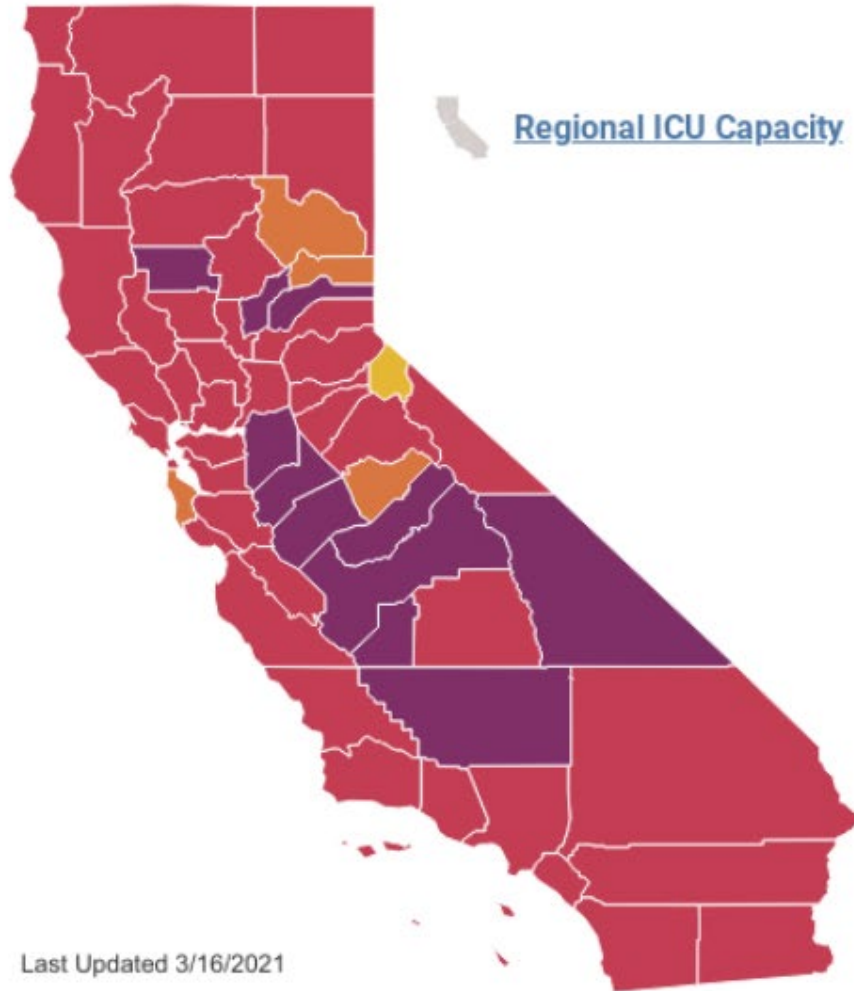
SEE THE NUMBERS

### Tracking COVID-19

As of March 16, California has 3,530,055 confirmed cases of COVID-19, resulting in 55,372 deaths.

Cases	Deaths	Tests	Vaccines Administered
<b>3,530,055</b> Total	<b>55,372</b> Total	<b>51,351,366</b> Total	<b>12,637,197</b> Total
1,260 Today	42 Today	167,229 Today	
↘ 6.1 New cases per 100K	↘ 0.1 New deaths per 100K	↘ 1.8% Test positivity	

*Updated March 16, 2021 at 10:00 AM with data from March 15, 2021*



**STATEWIDE METRICS**

**6.5** New COVID-19 positive cases per day per 100K

**2.3%** Positivity rate (7-day average)

**28.7%** ICU availability

Find a county

Click on the map for updated metrics

**COUNTY RISK LEVELS**

	Counties	Population	
Widespread	11	4,134,080	10.3%
Substantial	42	35,176,055	87.7%
Moderate	4	817,908	2.0%
Minimal	1	1,117	0.0%



# COVID-19: Vaccine Dashboard

## Statewide



**12,637,197 (75.7%) Doses administered**  
**207,441 Average doses per day**

**4,191,752 (12.9%) People partially vaccinated**  
**4,344,182 (13.4%) People fully vaccinated**



**1,813,615 Doses on hand**  
**(9 days of inventory)**

**16,686,580 Doses Delivered**



**2,247,920 CDC Pharmacy Doses Delivered**

See [Data Dictionary](#) for Details.

## Doses Administered by County of Residence

County

(All) ▼



Los Angeles	3,056,690
San Diego	1,274,951
Orange	1,037,074
Riverside	639,534
Alameda	619,693
Santa Clara	615,446
San Bernardino	490,894
Contra Costa	445,789
Sacramento	429,212
San Francisco	357,837
San Mateo	314,002
Ventura	270,080
Fresno	262,364
Sonoma	206,118
Kern	194,533

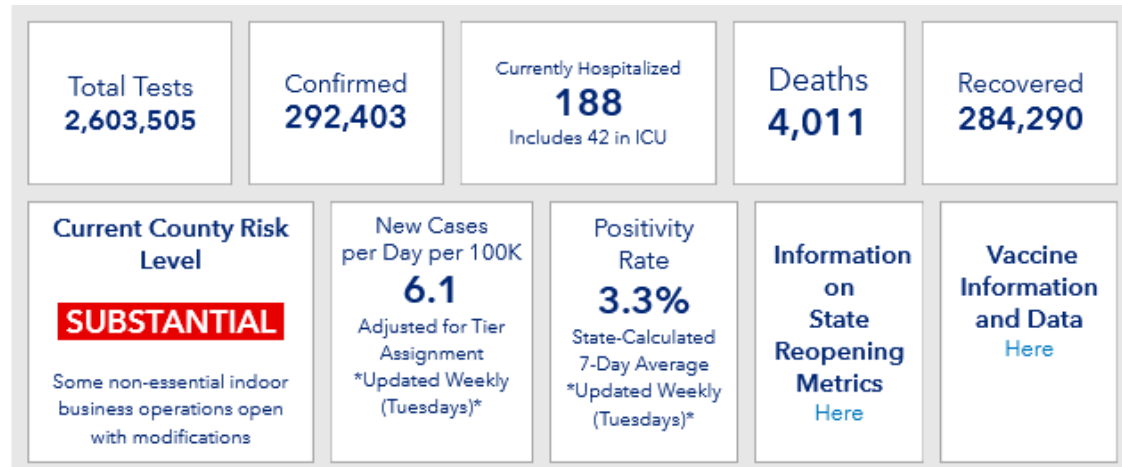
Data: 3/15/2021 11:59pm | Posted: 3/16/2021





# Riverside County Data

<https://www.rivcoph.org/coronavirus>



## RUHS Public Health News:

- [Vaccine Eligibility List](#) - March 15, 2021
- Riverside County health officials expand vaccine eligibility to those with underlying health illness [English](#) / [Spanish](#) - March 15, 2021
- More breweries, wineries and distilleries to reopen outdoors in Riverside County [English](#) / [Spanish](#) - March 12, 2021
- Outdoor entertainment, sports with spectators may resume April 1 in Riverside County [English](#) / [Spanish](#) - March 9, 2021
- Riverside County health officials open new COVID19 vaccine site in Moreno Valley [English](#) / [Spanish](#) - March 5, 2021
- [Riverside County, Lift to Rise, and Inland SoCal United Way, Announce Applications for Next Round of United Lift Rental Assistance](#) - March 5, 2021
- Moderate and high-contact youth and adult sports may now resume in Riverside County [English](#) / [Spanish](#) / [Advisory Letter](#) - March 2, 2021
- Changes to COVID-19 vaccination clinics to better serve Riverside County residents [English](#) / [Spanish](#) - March 1, 2021
- [Riverside County health officials continue to urge residents to get tested for COVID-19](#) - February 24, 2021
- [More youth and adult sports may soon resume in Riverside County](#) - February 23, 2021
- [Schools with approved COVID-19 prevention plans may return to in-person instruction](#) - February 23, 2021
- County, City of Palm Springs partner to open new vaccine clinic in Coachella Valley [English](#) / [Spanish](#) - February 10, 2021

Dashboard -Click [here](#) for more detailed city/community data and reports

## Find a a testing site

Get tested for [#COVID19](#) with or without medical insurance at no cost to you! Make an appointment here <https://gettested.ruhealth.org>  
[#RivCoNOW](#) [#RUHealth](#)

Need Food Access – Click [here](#)

<https://www.ruhealth.org/>

Need Peer Support – Click [here](#)

<https://www.ruhealth.org/>

Need Prescriptions Delivered – Click [here](#)

<https://www.ruhealth.org/>

## Daily Epidemiology Summary updated 3-15-2021

[https://www.rivcoph.org/Portals/0/Documents/CoronaVirus/March2021/Dashboard/3/3.15.21%20External%20Report%20Daily\\_COVID-19\\_Updates%20\(1\).pdf?ver=2021-03-15-135605-333&timestamp=1615841811319](https://www.rivcoph.org/Portals/0/Documents/CoronaVirus/March2021/Dashboard/3/3.15.21%20External%20Report%20Daily_COVID-19_Updates%20(1).pdf?ver=2021-03-15-135605-333&timestamp=1615841811319)

## Licensed Hospital/ICU Beds Utilization Trends updated 3-11-2021

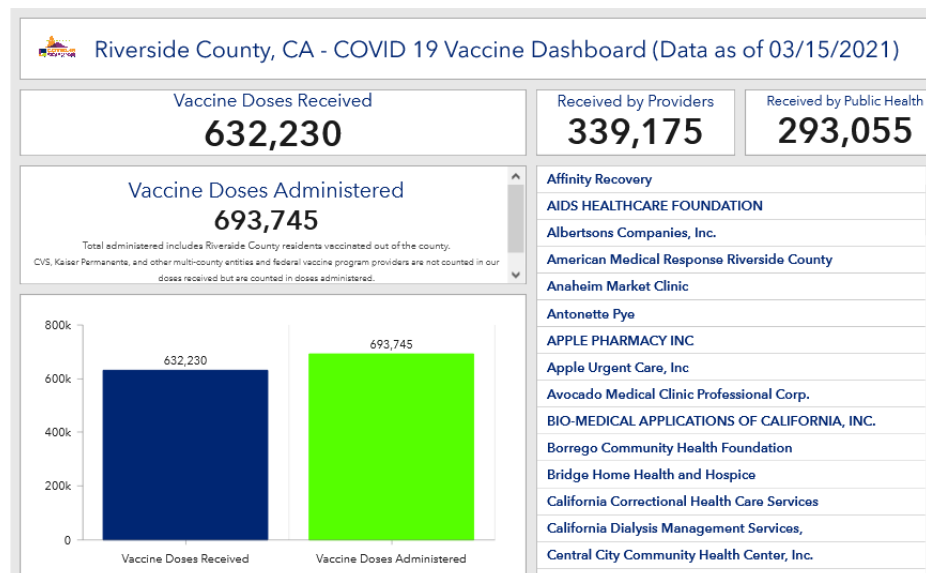
[https://www.rivcoph.org/Portals/0/Documents/CoronaVirus/March2021/Dashboard/2/EMD\\_COVID-19\\_Metrics\\_Public\\_Dashboard\\_03-11-2021.pdf?ver=2021-03-12-080749-210&timestamp=1615565284281](https://www.rivcoph.org/Portals/0/Documents/CoronaVirus/March2021/Dashboard/2/EMD_COVID-19_Metrics_Public_Dashboard_03-11-2021.pdf?ver=2021-03-12-080749-210&timestamp=1615565284281)

## COVID-19 Vaccine

<https://www.ruhealth.org/covid-19-vaccine>

### RUHS Public Health:

- Breakthrough Church vaccine clinic [English](#) / [Spanish](#) - March 09, 2021 Simpson Center vaccine clinics [English](#) / [Spanish](#) - March 03, 2021
- [Sierra Dawn vaccine clinic in Hemet](#) - March 08, 2021
- Good Hope Community Center vaccine clinic [English](#) / [Spanish](#) - March 08, 2021
- Trinity Church vaccine clinic in Moreno Valley [English](#) / [Spanish](#) - March 08, 2021
- Simpson Center vaccine clinics [English](#) / [Spanish](#) - March 03, 2021
- [Know your vaccine rights](#) - February 24, 2021
- [COVID-19 Vaccination Plan](#) - January 25, 2021
- COVID-19 Vaccine Information [English](#) / [Spanish](#) - Updated January 20, 2020
- Riverside County activates incident management team, plans for regional COVID-19 vaccine supersites [English](#) / [Spanish](#) - January 13, 2021
- [COVID Vaccination Clinics for Providers](#) - January 6, 2021



# Weather

National Weather Service San Diego, California		Weather Threats Outlook						
		12:00 PM PDT Tuesday, March 16, 2021						
County	Zone	Tue 3/16	Wed 3/17	Thu 3/18	Fri 3/19	Sat 1/20	Sun 1/21	Mon 1/22
San Diego	Beach/Marine	None	None	None	None	Windy / High Seas	Windy / High Seas / Slight Chc Showers	Breezy / High Seas
	Coast	None	None	None	None	None	Slight Chc Showers / Breezy	Breezy
	Valleys	None	AM Cold	None	None	None	Slight Chc Showers / Breezy	Breezy
	Mountains	Breezy	None	None	Breezy Late	Breezy	Windy / Fog / Slight Chc Showers	Breezy / Fog
	Deserts	None	None	None	None	Breezy	Windy / Slight Chc Showers	Breezy
Orange	Beach	None	None	None	None	None	Slight Chc Showers / Breezy	Breezy
	Coast	None	None	None	None	None	Slight Chc Showers / Breezy	Breezy
	Inland	None	None	None	None	None	Slight Chc Showers / Breezy	Breezy
	Mountains	None	None	None	None	Breezy	Slight Chc Showers / Breezy	Breezy
Riverside	Inland Empire	None	AM Cold	None	None	None	Slight Chc Showers / Breezy	Breezy
	Mountains	Breezy	AM Cold	None	Breezy Late	Breezy	Windy / Fog / Slight Chc Showers	Breezy / Fog
	Desert	None	None	None	None	Breezy	Windy / Slight Chc Showers	Breezy
San Bernardino	Inland Empire	None	AM Cold	None	None	None	Slight Chc Showers / Breezy	Breezy
	Mountains	None	AM Cold	None	Breezy Late	Breezy	Windy / Fog / Slight Chc Showers	Breezy / Fog
	Desert	None	None	None	None	Breezy	Windy / Slight Chc Showers	Breezy
Impact Threat Levels		None	Low	Medium	High	Extreme		

Latest hazard threat table: <https://www.wrh.noaa.gov/sqx/event/dsstable.php>

<https://www.weather.gov/forecastpoints#>