



****Extraordinary Assumptions:** There are a lot of different data sources in this report not all of them match but aid to provide an overall picture of the current situation. COVID-19 Data Source Comparison - https://covid-19.splunkforgood.com/covid_19_datasource_comparison

Daily Situation Summary

Thursday, December 17, 2020

As of 10:00 AM

COVID-19 by the Numbers

12/17/2020	Riverside	Imperial	Kern	Los Angeles*	Orange	San Bernardino	San Diego	San Luis Obispo	Santa Barbara	Ventura	Mono*	Inyo	California	United States	Global
Total Cases	135,751	19,980	52,896	557,907	115,260	143,565	114,248	8,252	13,966	28,566	702	444	1,723,362	16,756,581	72,821,797
New Cases	3,929	224	894	21,649	2,367	6,017	2,807	178	184	630	17	50	52,281	236,913	642,738
Total Cases Per Capita	5,696	11,087	5,990	5,525	3,643	6,723	3,459	2,932	3,147	3,368	4,953	2,455	4,402	5,067	942
New Cases Per Capita	164.86	124.30	101.24	214.39	74.81	281.77	84.99	63.24	41.47	74.28	119.94	276.47	133.54	71.64	8.31
Recovered	<u>71,280</u>	<u>16,739</u>	<u>19,358</u>	<u>Not Reported</u>	<u>68,773</u>	<u>118,371</u>	<u>83,421</u>	<u>6,504</u>	<u>12,676</u>	<u>19,652</u>	<u>Not Reported</u>	<u>319</u>	<u>705,467</u>	<u>10,181,621</u>	<u>52,653,389</u>
Total Deaths	1,666	388	470	8,568	1,718	1,304	1,217	54	145	204	3	19	21,860	306,427	1,642,661
New Deaths	38	8	0	137	23	63	23	2	3	3	0	1	379	3,435	12,407
Deaths Per Capita	69.90	215.30	53.22	84.85	54.30	61.07	36.85	19.19	32.68	24.05	21.17	105.06	55.84	92.66	21.25
Presumptive active cases	62,805	2,853	33,068		44,769	23,890	29,610	1,694	1,145	8,710		106	996,035	6,268,533	18,525,747
% of State's Cases	7.88%	1.16%	3.07%	32.37%	6.69%	8.33%	6.63%	0.48%	0.81%	1.66%	0.04%	0.03%	10.28%	23.01%	
Currently in Hospitals	1,139	165	311	5,466	1,615	1,585	1,186	35	102	241	2	2	16,426		
Total Hospital Beds	3,530	265	1,166	20,253	6,058	4,063	6,798	460	688	1,222	17	29	68,514		
Currently in ICU	216	38	62	1,035	343	285	295	9	24	63	0	2	3,280		
ICU Beds Available	29	0	25	338	79	41	168	19	37	35	2	2	1,259		
Case Fatality Rate	1.227%	1.942%	0.889%	1.536%	1.491%	0.908%	1.065%	0.654%	1.038%	0.714%	0.427%	4.279%	1.268%	1.829%	2.256%
Population*	2,383,286	180,216	883,053	10,098,052	3,164,182	2,135,413	3,302,833	281,455	443,738	848,112	14,174	18,085	39,148,760	330,711,590	7,729,888,000
% of Population	6.09%	0.46%	2.26%	25.79%	8.08%	5.45%	8.44%	0.72%	1.13%	2.17%	0.04%	0.05%	0.52%	0.2168%	

Sources: CDPH, WHO, CDC, Local County Data

The date for which case statistics and hospital data were reported. Hospital COVID data are self-reported through a portal managed by the California Hospital Association and pulled at 2pm. COVID case statistics are reported by local health departments to CaREDIE and are pulled at 2pm. Hospital data and case statistics are integrated by the California Department of Technology and made available through the Open Data Portal the following morning. CA Open Data Portal is at least 24 Hours behind although a backlog of new case reports at the State level has ostensibly been cleared, some County dashboards still contain notes that indicate data are missing. *California-Demographics.com made by Cubit – a demographic data provider & census.gov

Presumptive active cases - A calculation (Total Cases - Recovered - Dead) (* LA County does not report recovery rates)

News

More detail on page 2

News – The collection of news articles is related to COVID-19. The inclusion or order of articles is not intended to reflect their importance, nor is it intended to endorse the political viewpoints or affiliations included in news coverage.

NIH-funded COVID-19 home test is first to receive over-the-counter authorization from FDA

- The U.S. Food and Drug Administration granted emergency use authorization(link is external) (EUA) today for an innovative COVID-19 viral antigen test developed with support from the National Institutes of Health’s Rapid Acceleration of Diagnostics (RADx) Initiative. Ellume USA LLC, Valencia, California, designed the test for use at home without a prescription. This is the first EUA awarded for an at-home COVID test that can be purchased over the counter. Ellume developed the test with a \$30 million contract and technical support from the RADx Tech program, managed by the National Institute of Biomedical Imaging and Bioengineering (NIBIB), part of NIH.
- Users can share real-time results from the test, selling for approximately \$30, with healthcare professionals, employers, and schools for efficient COVID-19 tracking. Ellume plans to scale-up manufacturing to deliver millions of home tests per month in 2021.

<https://www.nih.gov/news-events/news-releases/nih-funded-covid-19-home-test-first-receive-over-counter-authorization-fda>

NIH observational study of coronavirus infection and multisystem inflammatory syndrome in children begins

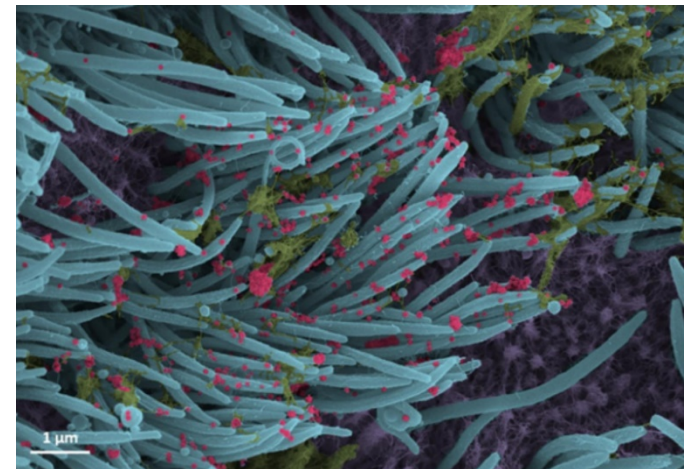
- “It is critical that we learn how to prevent and treat this rare but very serious syndrome in children,” said NIAID Director Anthony S. Fauci, M.D. “Information gathered through the PRISM study may ultimately help clinicians diagnose and treat MIS-C as well as predict which children are susceptible to the disease.”
- The study, called the Pediatric Research Immune Network on SARS-CoV-2 and MIS-C (PRISM) will evaluate the short- and long-term health outcomes of SARS-CoV-2 infection in children, including multisystem inflammatory syndrome in children (MIS-C), and to characterize the immunologic pathways associated with different disease presentations and outcomes. SARS-CoV-2 is the virus that causes COVID-19.

<https://www.nih.gov/news-events/news-releases/nih-observational-study-coronavirus-infection-multisystem-inflammatory-syndrome-children-begins>

A Close-up of COVID-19 in Lung Cells

- This dramatic image, published recently in the *New England Journal of Medicine*, comes from the lab of pediatric pulmonologist Camille Ehre, University of North Carolina at Chapel Hill. Ehre and team study mucus and how its properties change in cystic fibrosis, chronic obstructive pulmonary disease (COPD), and various other conditions that affect the lungs. These days, they’re also focusing their attention on SARS-CoV-2 and potentially new ways to block viral entry into cells of the human airway.
- This colorized scanning electron microscope (SEM) image shows SARS-CoV-2-infected human lung cells (purple) covered in hair-like cilia (blue). Those cilia line the inner surface of the airways and help to clear mucus (yellow-green) containing dust and other debris from the lungs. Emerging from the surface of those infected airway cells are many thousands of coronavirus particles (red).

<https://directorsblog.nih.gov/2020/12/17/a-close-up-of-covid-19-in-lung-cells/>



San Diego pauses enforcing COVID-19 restaurant restrictions

- San Diego will pause enforcing COVID-19 restrictions against restaurants, according to the county.
- The decision comes after a judge ruled that the county cannot enforce a regional stay-at-home order against two strip clubs.
- In his ruling, the judge said the state and county have not provided evidence tying the spread of COVID-19 to live adult entertainment or businesses with restaurant service.

<https://www.kron4.com/news/california/san-diego-pauses-enforcing-covid-19-restaurant-restrictions/>

RELATED

California sued over new coronavirus workplace rules

- A group of small California businesses and national business groups sued California state agencies Wednesday, seeking to rollback broad workplace protections against the coronavirus implemented last month.
- The National Retail Federation and the National Federation of Independent Businesses say rules adopted by the California Department of Industrial Relations to prevent virus infections in the workplace violate the state's Administrative Procedures Act and weigh too heavily on businesses that have been pushed to the breaking point by the pandemic.
- Three California small businesses are also plaintiffs in the suit filed in San Francisco Superior Court. Business groups lobbied strongly against the rule change approved unanimously last month by the by the Standards Board of the California Division of Occupational Safety and Health, better known as Cal/OSHA, which is part of the broader business-regulation department.

<https://www.sfchronicle.com/business/article/California-sued-over-new-coronavirus-workplace-15809875.php>

Some Riverside County hospitals have refrigerated trailers as coronavirus deaths mount

- As the coronavirus pandemic fills their beds with critically ill patients, some Riverside County hospitals are tight on morgue space, with refrigerated trailers in place at some facilities to hold the dead.
- While it's unclear how many coronavirus victims are among the deceased, the lack of morgue space comes as hospitals throughout the Inland Empire, state, and nation are packed with COVID-19 patients. The county was using 100% of its intensive care unit capacity Monday, Dec. 14, but other beds were being converted for intensive care patients.

<https://www.pe.com/2020/12/15/some-riverside-county-hospitals-have-refrigerated-trailers-as-coronavirus-deaths-mount/>

RELATED

California orders body bags, makeshift morgues

- California is distributing 5,000 body bags mostly to the hard-hit Los Angeles and San Diego areas and has 60 refrigerated trailers standing by as makeshift morgues in anticipation of a surge of coronavirus deaths from hospitalizations that now are double the summertime peak and threaten to overwhelm the hospital system, Gov. Gavin Newsom said Tuesday.

<https://spectrumlocalnews.com/nys/rochester/community/2020/12/08/70-inmates-and-26-jail-deputies-at-the-monroe-county-jail-have-tested-positive-for-covid-19->

California scrambling to prepare for health care staffing shortage

- Governor Gavin Newsom said on Tuesday that California currently needs roughly 3,000 additional temporary medical workers, but has hired only 10 percent of that number so far.
- "We are going through the most challenging and difficult surge we've experienced since the beginning of this pandemic," Newsom warned.
- The biggest challenge, he added, is finding enough trained health professionals to care for the surge of patients expected in the coming weeks.

- "Bringing on additional staff: that is goal number one," said California Health Secretary Dr. Mark Ghaly. "We are not as concerned right now with running out of space or supplies."

<https://www.cbs8.com/article/news/health/coronavirus/state-scrambling-to-prepare-for-health-care-staffing-shortage/509-ebf4b490-2e0d-4d4e-a62b-234a4447b684>

At least 77 people test positive for coronavirus after Rocklin youth basketball tournament

- Santa Clara health officials said 77 people tested positive for COVID-19 after traveling to Placer County for a youth basketball tournament in Rocklin.

<https://www.abc10.com/article/news/local/rocklin/at-least-77-people-test-positive-for-coronavirus-after-youth-basketball-tournaments/103-5eea3c86-a529-46ec-a5b2-cd5793c5f9ff>

COVID-19 outbreak hits Fort Collins homeless shelter with 54 cases

- Fort Collins Rescue Mission's temporary homeless shelter at Blue Spruce Drive is experiencing an active COVID-19 outbreak, with 54 cases now confirmed among overnight guests and staff. The outbreak, which is expected to grow in numbers as more testing is conducted this week.

<https://www.coloradoan.com/story/news/2020/12/09/covid-19-outbreak-hits-fort-collins-homeless-shelter-54-cases/3864230001/>

California again shatters single-day coronavirus case record: more than 42,000 cases

First vaccine doses arrive in California

- A Los Angeles Times county-by-county tally tallied 42,129 coronavirus cases across the state Monday. That's the first time more than 40,000 cases have been reported by the state's local health agencies in a single day.

<https://www.latimes.com/california/story/2020-12-14/california-again-shatters-single-day-coronavirus-case-record-more-than-42-000-cases>

RELATED

Riverside County reports 6,741 coronavirus cases, 13 additional deaths Monday

<https://www.desertsun.com/story/news/health/2020/12/14/riverside-county-reports-6-741-coronavirus-cases-13-new-deaths/6549403002/>

Riverside County At 0% ICU Bed Capacity As Nurses' Strike Looms

- As coronavirus hospitalizations mount in Riverside County and intensive care unit beds are at zero capacity, unionized registered nurses and licensed medical professionals at three Southland hospitals — including Riverside Community Hospital — have called a 10-day unfair labor practice strike.
- According to a statement Monday from the registered nurse union SEIU Local RN121, the workers plan to strike from December 24 through January 3 at Riverside Community Hospital in Riverside, Los Robles Regional Medical Center in Thousand Oaks and West Hills Hospital & Medical Center in West Hills.
- Union members gave the hospitals a 10-day advance notice Monday in order to allow the employers ample time to bring in temporary replacement staff, according to SEIU Local RN121.
- All three hospitals are Hospital Corporation of America facilities. Safety, staffing and workload issues impacting safety are the employees' major concerns, according to the union.

https://patch.com/california/lakeelsinore-wildomar/s/hcm33/riverside-county-at-0-icu-bed-capacity-as-nurses-strike-looms?utm_term=article-slot-1&utm_source=newsletter-daily&utm_medium=email&utm_campaign=newsletter