



**\*\*Extraordinary Assumptions:** There are a lot of different data sources in this report not all of them match but aid to provide an overall picture of the current situation. COVID-19 Data Source Comparison - [https://covid-19.splunkforgood.com/covid\\_19\\_datasource\\_comparison](https://covid-19.splunkforgood.com/covid_19_datasource_comparison)

# Daily Situation Summary

## Tuesday, November 24, 2020

### As of 8:00 AM

#### COVID-19 by the Numbers

11/24/2020	Riverside	Imperial	Kern	Los Angeles*	Orange	San Bernardino	San Diego	San Luis Obispo	Santa Barbara	Ventura	California	United States	Global
Total Cases	81,565	15,109	37,904	360,341	69,913	83,505	71,649	5,664	10,946	18,105	1,110,370	12,333,452	58,900,547
New Cases	889	56	501	2,587	892	299	938	46	24	65	8,337	157,531	463,730
Total Cases Per Capita	3,422	8,384	4,292	3,568	2,210	3,910	2,169	2,012	2,467	2,135	2,836	3,731	765
New Cases Per Capita	37.30	31.07	56.73	25.62	28.19	14.00	28.40	16.34	5.41	7.66	21.30	47.66	6.03
Recovered	<a href="#">66,087</a>	<a href="#">13,698</a>	<a href="#">18,143</a>	<a href="#">Not Reported</a>	<a href="#">58,102</a>	<a href="#">75,158</a>	<a href="#">59,602</a>	<a href="#">4,985</a>	<a href="#">10,468</a>	<a href="#">15,460</a>	<a href="#">544,238</a>	<a href="#">7,567,524</a>	<a href="#">41,392,935</a>
Total Deaths	1,400	353	445	7,438	1,554	1,129	968	35	133	174	18,726	257,016	1,393,305
New Deaths	0	0	0	42	3	2	2	0	0	0	50	1,058	7,712
Deaths Per Capita	58.74	195.88	50.39	73.66	49.11	52.87	29.31	12.44	29.97	20.52	47.83	77.76	18.10
Presumptive active cases	14,078	1,058	19,316		10,257	7,218	11,079	644	345	2,471	547,406	4,508,912	16,114,307
% of State's Cases	7.35%	1.36%	3.41%	32.45%	6.30%	7.52%	6.45%	0.51%	0.99%	1.63%	9.00%	20.94%	
Currently in Hospitals	474	51	126	1,919	486	580	493	17	25	73	6,254		
Total Hospital Beds	3,351	265	1,291	20,163	5,817	4,053	6,801	460	688	1,216	68,580		
Currently in ICU	96	16	21	404	105	137	131	3	4	27	1,333		
ICU Beds Available	44	2	46	654	156	88	237	26	49	23	2,013		
Case Fatality Rate	1.716%	2.336%	1.174%	2.064%	2.223%	1.352%	1.351%	0.618%	1.215%	0.961%	1.686%	2.084%	2.366%
Population*	2,383,286	180,216	883,053	10,098,052	3,164,182	2,135,413	3,302,833	281,455	443,738	848,112	39,148,760	330,544,225	7,695,773,000
% of Population	6.09%	0.46%	2.26%	25.79%	8.08%	5.45%	8.44%	0.72%	1.13%	2.17%	0.34%	0.1603%	

Sources: CDPH, WHO, CDC

The date for which case statistics and hospital data were reported. Hospital COVID data are self-reported through a portal managed by the California Hospital Association and pulled at 2pm. COVID case statistics are reported by local health departments to CalREDIE and are pulled at 2pm. Hospital data and case statistics are integrated by the California Department of Technology and made available through the Open Data Portal the following morning. CA Open Data Portal is at least 24 Hours behind although a backlog of new case reports at the State level has ostensibly been cleared, some County dashboards still contain notes that indicate data are missing. \*California-Demographics.com made by Cubit – a demographic data provider & census.gov

Presumptive active cases - A calculation (Total Cases - Recovered - Dead) (\* LA County does not report recovery rates)

- News** [More detail on page 2](#)
- Thanksgiving** [More detail on page 4](#)
- Information** [More detail on page 5](#)
- US Data** [More detail on page 6](#)
- State Data** [More detail on page 12](#)
- Riverside County Data** [More detail on page 15](#)
- Weather** [More detail on page 17](#)

**News** – The collection of news articles is related to COVID-19. The inclusion or order of articles is not intended to reflect their importance, nor is it intended to endorse the political viewpoints or affiliations included in news coverage.

## England Cuts Quarantine Time For Travelers With Negative COVID-19 Test

- International travelers heading to England could cut their mandatory quarantine time by more than half under new rules announced by the British government Tuesday.
- Starting Dec. 15, certain travelers could cut their 14-day mandatory quarantine down to five days if they take a COVID-19 test and the results are negative.

<https://www.npr.org/sections/coronavirus-live-updates/2020/11/24/938295037/england-cuts-quarantine-time-for-travelers-with-negative-covid-19-test>

## Evidence Builds That an Early Mutation Made the Pandemic Harder to Stop

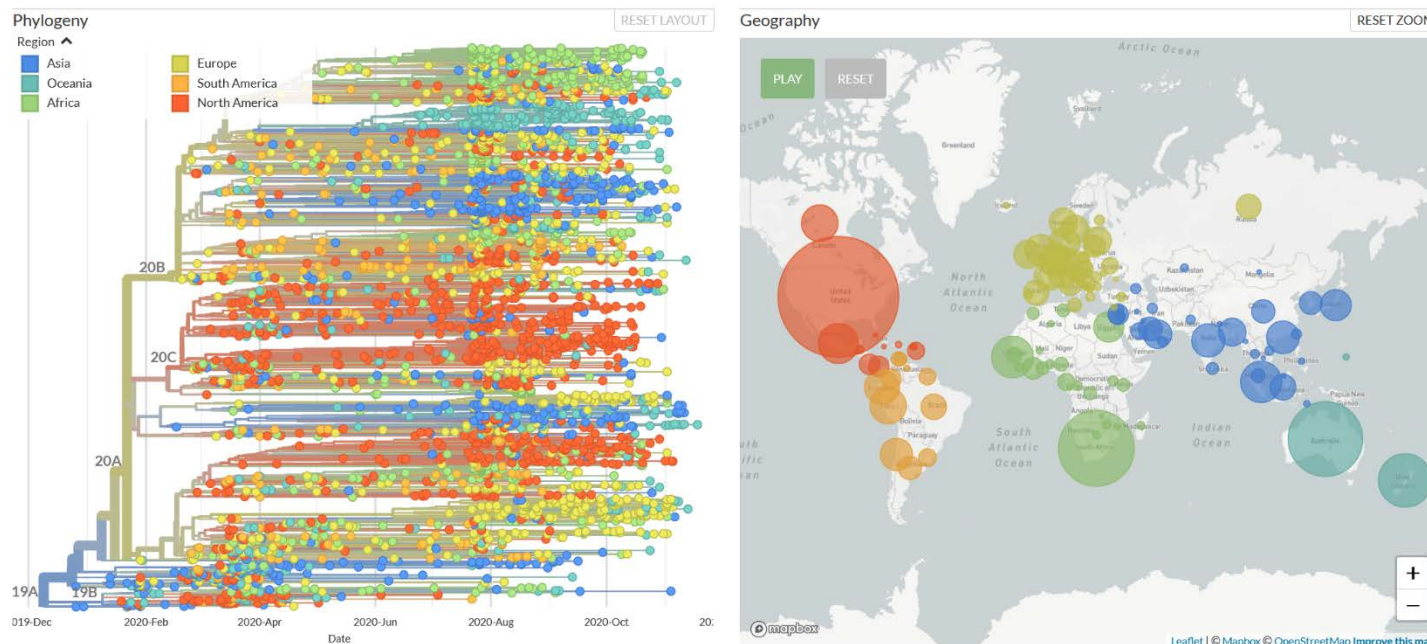
- As the coronavirus swept across the world, it picked up random alterations to its genetic sequence. Like meaningless typos in a script, most of those mutations made no difference in how the virus behaved.
- But one mutation near the beginning of the pandemic did make a difference, multiple new findings suggest, helping the virus spread more easily from person to person and making the pandemic harder to stop.
- The mutation, known as 614G, was first spotted in eastern China in January and then spread quickly throughout Europe and New York City. Within months, the variant took over much of the world, displacing other variants.

<https://www.nytimes.com/2020/11/24/world/covid-mutation.html>

RELATED

## Genomic epidemiology of novel coronavirus - Global subsampling

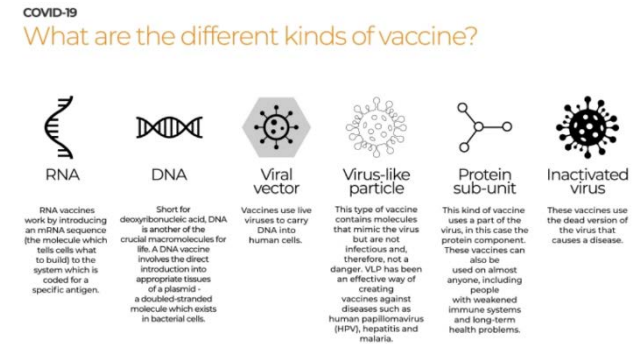
<https://nextstrain.org/ncov/global>



## What are the different kinds of COVID-19 vaccines?

- As the world gears up for the fastest-ever developed vaccine, several drug companies have taken different routes to manufacture the antidote to the pandemic that has held the world hostage since March of this year.

<https://www.aljazeera.com/features/2020/11/24/covid-19-vaccines-explained-in-maps-and-charts>



## Care rationing likely just days away at some facilities overwhelmed with COVID-19 patients

- At least 17 states recorded more hospitalizations for the virus on a day in the past week than on any other day during the pandemic, according to a COURIER analysis of data from the COVID Tracking Project.
- Doctors serving Idaho and eastern Oregon spent hours Tuesday trying to sway health districts, city leaders and the public to do more to stop the spread of coronavirus, warning that rationed care is looming in Idaho's future.

<https://www.cbsnews.com/video/care-rationing-likely-just-days-away-at-some-facilities-overwhelmed-with-covid-19-patients/#>

<https://couriernewsroom.com/2020/10/26/covid-hospitalizations-rationing-care/>

<https://www.sfgate.com/news/article/Idaho-docs-Rationed-care-looming-as-virus-15734963.php>

## Oxford's Defining Words Of 2020: 'Blursday,' 'Systemic Racism' And Yes, 'Pandemic'

- Each year, lexicographers at Oxford Languages, the maker of the Oxford English Dictionary, choose a single word or phrase to define the past 12 months. In 2019, it was "climate emergency," and in 2018, it was "toxic."
- But this year, they couldn't pick just one. The pandemic, racial unrest and natural disasters shaped the English language in countless ways in 2020. So Oxford opted to highlight dozens of terms, including "Black Lives Matter," "Blursday," "coronavirus," "lockdown," "social distancing" and "systemic racism."

<https://www.npr.org/2020/11/23/938187229/oxfords-defining-words-of-2020-blursday-systemic-racism-and-yes-pandemic>

## More Kids Are Getting COVID-19, Kentucky Pediatrician Says (5 min Listen)

- Elizabeth Hawse, a pediatrician in Lexington, Ky., says she has seen a jump from earlier this year, when she was getting "sporadic calls."
- "But over the past few weeks, we are seeing more and more kids calling the office that they've been exposed or family members exposed and more and more positive cases," Hawse tells Steve Inskeep on Morning Edition.
- Children represent about 11.5% of all reported coronavirus cases where a person's age is noted, according to the American Academy of Pediatrics and the Children's Hospital Association. The groups said the seven-day period of Nov. 5 to 12, the most recent for which they've reported data, was "by far the highest weekly increase" in children's cases since the start of the pandemic.

<https://www.npr.org/sections/coronavirus-live-updates/2020/11/23/937973069/more-kids-are-getting-covid-19-kentucky-pediatrician-says>

## L.A. County suspends outdoor dining at restaurants as coronavirus surges

- In a devastating blow to Los Angeles' struggling restaurant and hospitality industry, L.A. County public health officials on Sunday announced they will suspend outdoor dining at restaurants amid a surge of new coronavirus cases.

- The new rule takes effect at 10 p.m. Wednesday and restricts restaurants — along with breweries, wineries and bars — to takeout and delivery only for the first time since May. It will remain in place for at least three weeks, officials said. Wineries and breweries can continue retail operations.

[https://www.latimes.com/california/story/2020-11-22/l-a-county-suspends-outdoor-dining-at-restaurants-as-coronavirus-surges?utm\\_source=sfmc\\_100035609&utm\\_medium=email&utm\\_campaign=34944+Essential+California+11%2f24%2f20&utm\\_term=https%3a%2f%2fwww.latimes.com%2fcalifornia%2fstory%2f2020-11-22%2f-l-a-county-suspends-outdoor-dining-at-restaurants-as-coronavirus-surges&utm\\_id=18075&sfmc\\_id=3160688](https://www.latimes.com/california/story/2020-11-22/l-a-county-suspends-outdoor-dining-at-restaurants-as-coronavirus-surges?utm_source=sfmc_100035609&utm_medium=email&utm_campaign=34944+Essential+California+11%2f24%2f20&utm_term=https%3a%2f%2fwww.latimes.com%2fcalifornia%2fstory%2f2020-11-22%2f-l-a-county-suspends-outdoor-dining-at-restaurants-as-coronavirus-surges&utm_id=18075&sfmc_id=3160688)

RELATED

**Monday’s case tally pushed Los Angeles County’s five-day average further upward — surpassing its self-set threshold for issuing a new stay-at-home order — but no action has yet been taken.**

[https://www.latimes.com/california/story/2020-11-23/coronavirus-surge-pushes-l-a-county-to-the-brink-of-new-stay-at-home-order?utm\\_source=sfmc\\_100035609&utm\\_medium=email&utm\\_campaign=34944+Essential+California+11%2f24%2f20&utm\\_term=https%3a%2f%2fwww.latimes.com%2fcalifornia%2fstory%2f2020-11-23%2fcoronavirus-surge-pushes-l-a-county-to-the-brink-of-new-stay-at-home-order&utm\\_id=18075&sfmc\\_id=3160688](https://www.latimes.com/california/story/2020-11-23/coronavirus-surge-pushes-l-a-county-to-the-brink-of-new-stay-at-home-order?utm_source=sfmc_100035609&utm_medium=email&utm_campaign=34944+Essential+California+11%2f24%2f20&utm_term=https%3a%2f%2fwww.latimes.com%2fcalifornia%2fstory%2f2020-11-23%2fcoronavirus-surge-pushes-l-a-county-to-the-brink-of-new-stay-at-home-order&utm_id=18075&sfmc_id=3160688)

## Thanksgiving



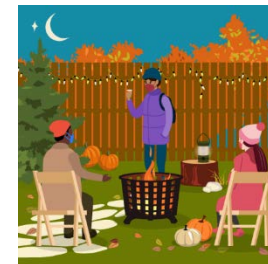
### Reasons for Gratitude Amid the COVID-19 Pandemic

- For many of us, Thanksgiving will feel really different this year. Less will need to be more, as we celebrate alone or with our immediate household members to stay safe and help combat the surge in COVID-19 cases across most of the land. And yet, times of trouble can also help us to focus on what’s really important in our lives. So, even as we face these challenges and the range of emotions that arise with them, it’s worth remembering that this Thanksgiving, there remain many reasons to be grateful.

<https://directorsblog.nih.gov/2020/11/24/reasons-for-gratitude-amid-the-covid-19-pandemic/>

### CDC: Everyone Can Make Thanksgiving Safer

[https://www.cdc.gov/coronavirus/2019-ncov/daily-life-coping/holidays/thanksgiving.html?ACSTrackingID=USCDC\\_2067-DM43154&ACSTrackingLabel=Celebrating%20Thanksgiving%20%20%7C%20COVID-19&deliveryName=USCDC\\_2067-DM43154](https://www.cdc.gov/coronavirus/2019-ncov/daily-life-coping/holidays/thanksgiving.html?ACSTrackingID=USCDC_2067-DM43154&ACSTrackingLabel=Celebrating%20Thanksgiving%20%20%7C%20COVID-19&deliveryName=USCDC_2067-DM43154)





## Information



Centers for Disease Control and Prevention

CDC 24/7: Saving Lives, Protecting People

### Using Social Media to Promote COVID-19 Mitigation Behaviors among College and University Students

Please join us, along with colleges and universities from across the nation, as we highlight innovative ways to inspire behavior change among students to reduce the spread of COVID-19.

Date: Wednesday, December 2, 2020

Time: 1:00—2:30 p.m. ET

#### Presenters:

1. Jay H. Dempsey, Health Communications Specialist, Joint Information Center Social Media Team, CDC's COVID-19 Response
2. Patrice A. Bell, Vice President of Administration and Ashley Irvin, Director of Marketing and Communications, Xavier University of Louisiana
3. Lawrence Lokman, Vice President for Strategic Communications and Damon Sims, Vice President for Student Affairs, Pennsylvania State University
4. Terry Coniglio, Director of Content Strategy, Georgia State University
5. Megan Kim, Art Director and advertising graduate student; Hailey McKee, Public Relations Manager and public relations graduate student; Hannah Schweitzer, Project Manager and Strategist and advertising senior; and Shubhangi Verma, Social Strategist and advertising graduate student, Boston University

This webinar is intended to bring together representatives from a broad cross-section of colleges and universities to learn more about how social media has been leveraged to promote positive health behaviors related to COVID-19. A CDC representative who specializes in health communication will share social media best practices including strategies for reaching young people 18-24. Representatives from Boston University, Georgia State University, Pennsylvania State University, and Xavier University of Louisiana will share how they have used social media as part of their institution's COVID-19 response.

We want to hear from you! You can submit your questions in advance when you register at the link below, or email the Social and Behavioral Health team at [eocevent350@cdc.gov](mailto:eocevent350@cdc.gov) with "IHE Call 12/2" in the subject line no later than November 30th.

Please register for this event [https://www.zoomgov.com/webinar/register/WN\\_AlsOjvyuT0WMc0ZY7AuaLg](https://www.zoomgov.com/webinar/register/WN_AlsOjvyuT0WMc0ZY7AuaLg)



# U.S. Data

[https://covid.cdc.gov/covid-data-tracker/#cases\\_casesper100klast7days](https://covid.cdc.gov/covid-data-tracker/#cases_casesper100klast7days)

TOTAL CASES  
**12,175,921**  
+147,840 New Cases

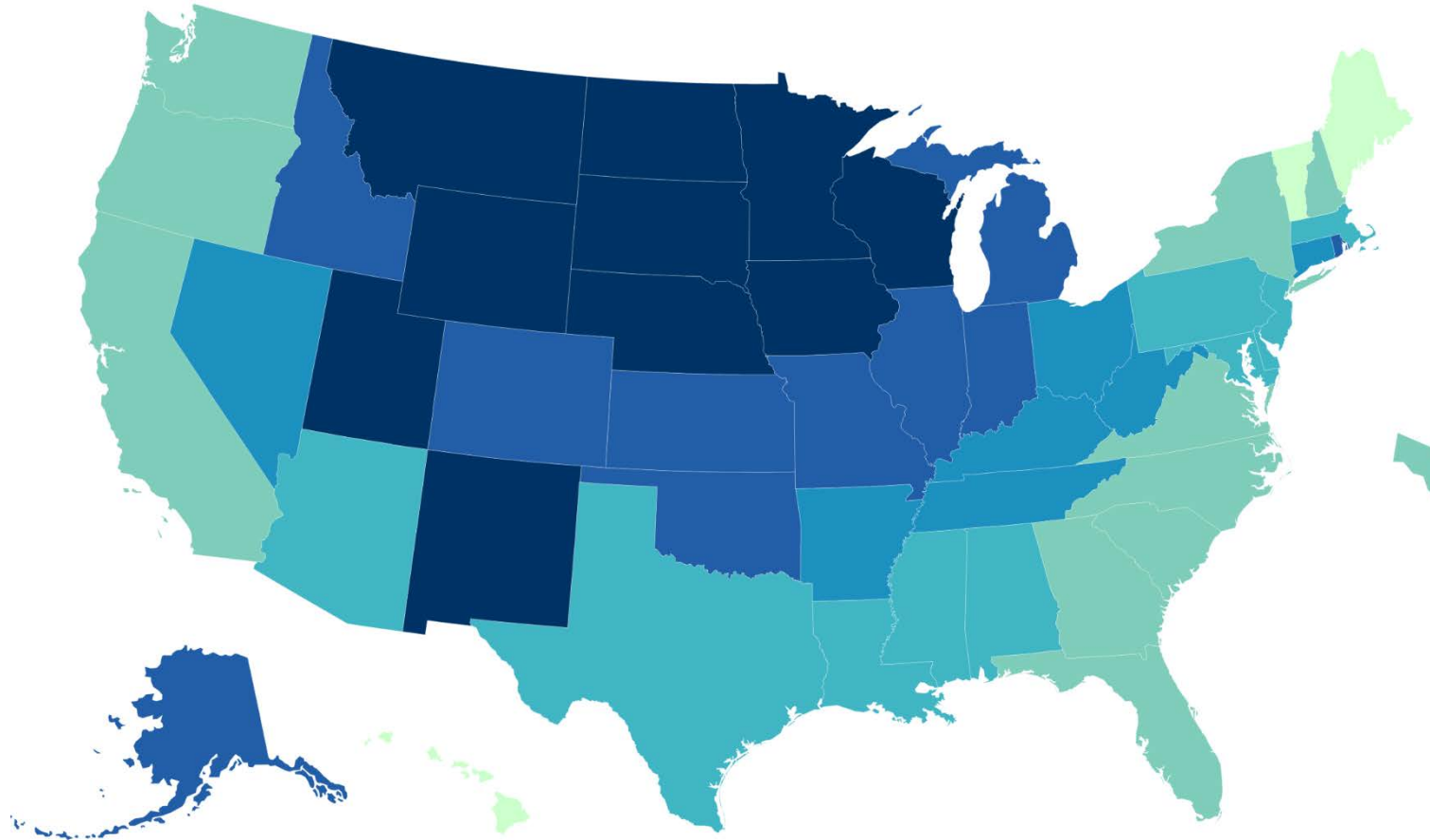
CASES IN LAST 7 DAYS PER 100K  
**52**

TOTAL DEATHS  
**255,958**  
+882 New Deaths

CDC | Updated: Nov 23 2020 12:17PM

- View:**  
 Cases  
 Deaths
- Time period:**  
 Last 7 Days  
 Since Jan 21, 2020
- Metric:**  
 Count  
 Rate per 100,000

US COVID-19 Case Rate Reported to the CDC in the Last 7 Days, by State/Territory (cases per 100K)



### Territories



### Cases in Last 7 Days per 100,000



## Social Impact COVID-19 Events in the United States

**3** EVENTS  
Past 24 hours

Map of news reports related to social impact events resulting from the COVID-19 outbreak in the United States, such as school closures, localized outbreaks, state of emergency declarations, etc.

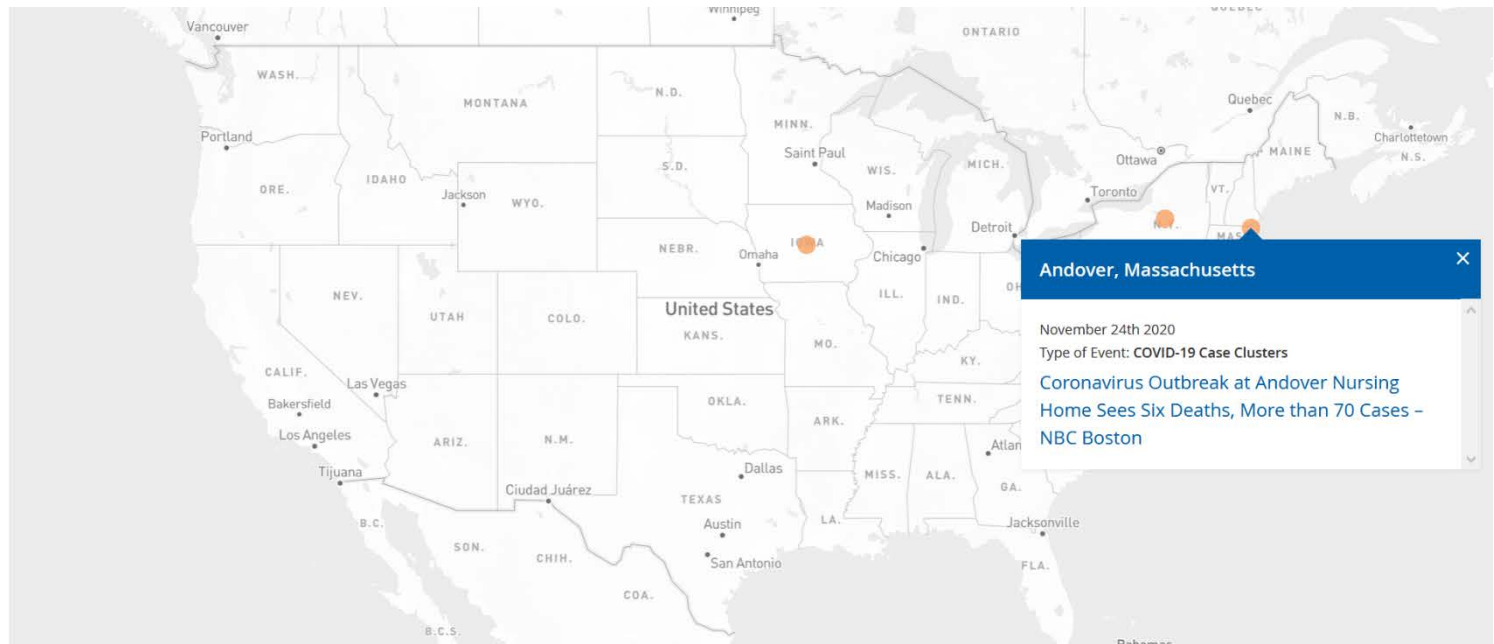
DATE RANGE

Past 24 hours

TYPE OF EVENT ?

COVID-19 Case Clusters

[About this Map](#) | Developed by [HealthMap](#)

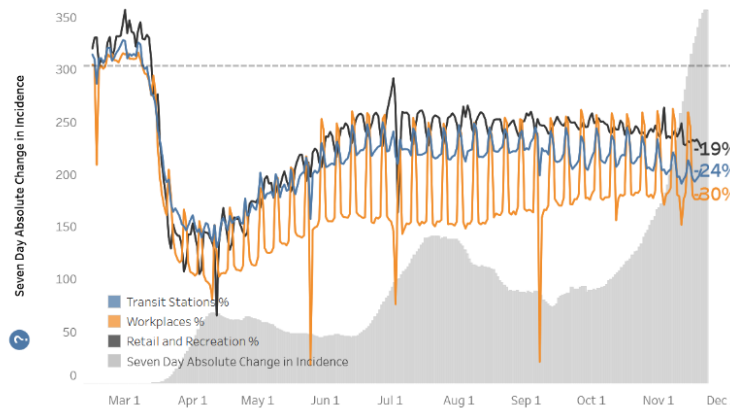


### EXPLORE HUMAN MOBILITY AND COVID-19 TRANSMISSION IN YOUR LOCAL AREA

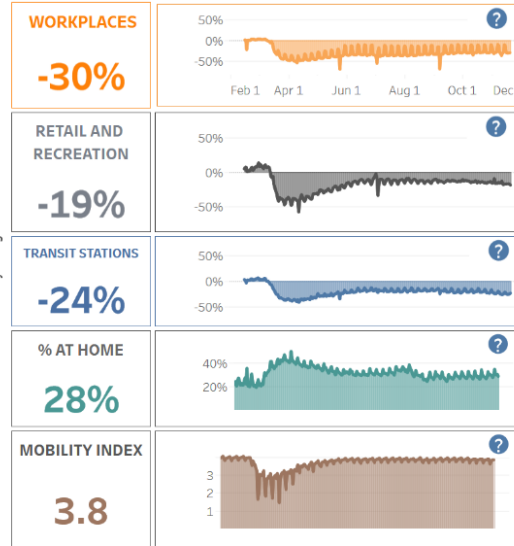
SELECT STATE: 
 SELECT COUNTY: 
 SELECT URBAN/RURAL COUNTY CLASSIFICATION: 
 SELECT METRIC OF INTEREST:

The Human Mobility and COVID-19 Transmission Dashboard was created in partnership with the Georgia Tech Research Institute. References to the Georgia Tech Research Institute do not imply endorsement or government sanction by the U.S. Centers for Disease Control and Prevention.

All, USA



**SHELTER IN PLACE ORDERS**  
Hover over bar for dates and details (Select a state from dropdown to show orders)

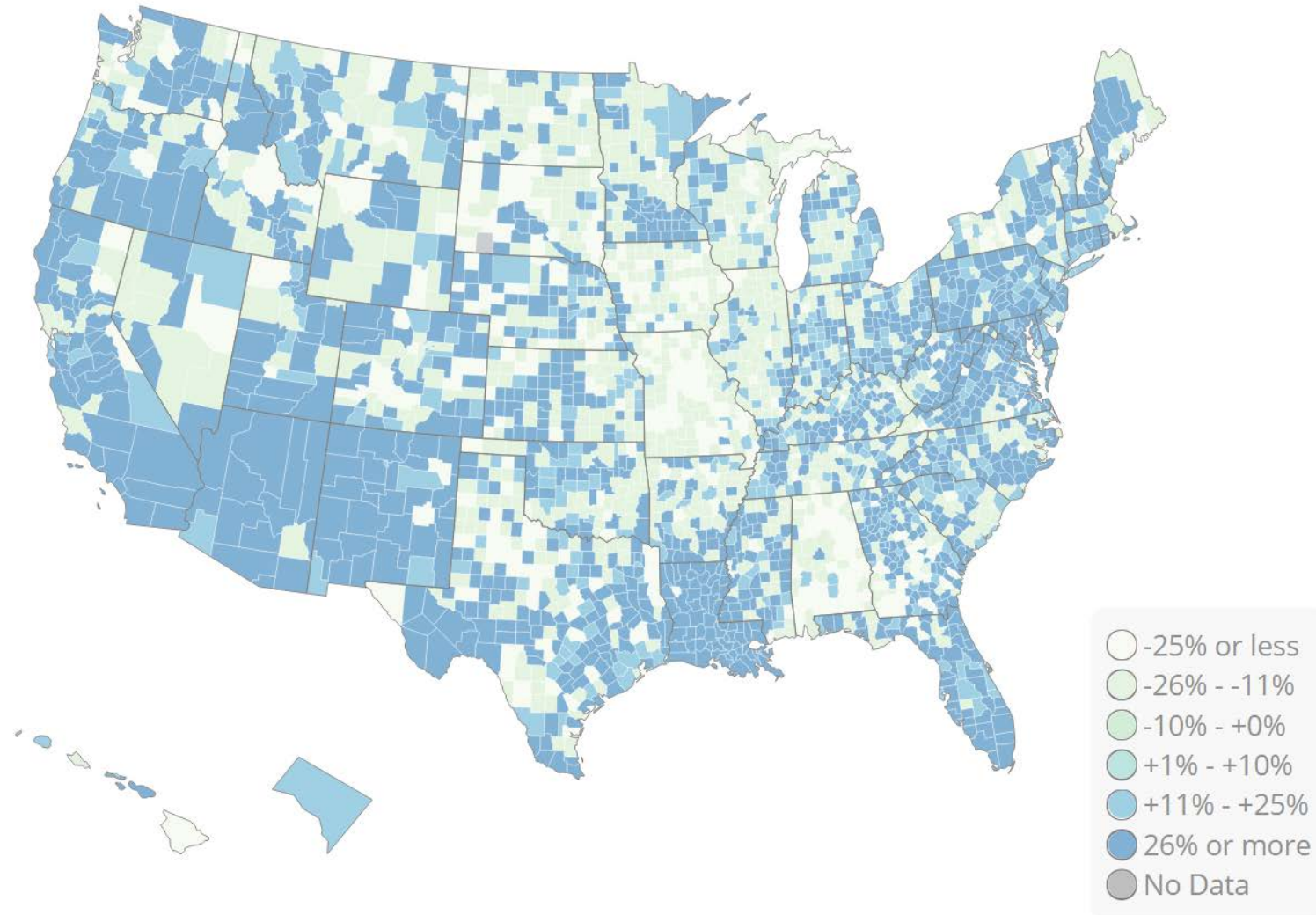


Data Sources: Case data are courtesy of USAFacts.org. Refer to USAFacts for methods of data collection and processing. Officially verified U.S. case data are available on CDC's U.S. Cases page. The mobility metrics are generated utilizing Google Mobility Reports (<https://www.google.com/covid19/mobility/>), Safegraph Social Distancing Metrics (<https://docs.safegraph.com/docs/social-distancing-metrics>), and Cuebiq Mobility Insights (<https://www.cuebiq.com/distancing-insights-covid19/>). The shelter in place orders are collected and compiled by CDC's COVID-19 response.

Limitations: The Google Mobility Reports data are not updated as frequently as other sources and often has a lag between updates. The Safegraph Social Distancing Metrics may undercount the number of at-home devices due to the fact that GPS does not register as often for people who are stationary. Also, GPS does not consistently update throughout the day, therefore someone may have taken a short trip (or not taken the device) and returned home before a sample was taken. In this case they would be counted as at-home. The shelter in place order data do not contain other types of government orders.

Map Data:

Time Period: Sun Nov 15 2020 - Sat Nov 21 2020





## CDC Whats New

<https://www.cdc.gov/coronavirus/2019-ncov/whats-new-all.html>

- [Know Your Travel Risk](#) Tuesday, November 24, 2020
- [Frequently Asked Questions about Coronavirus \(COVID-19\) for Laboratories](#) Tuesday, November 24, 2020
- [Cases & Deaths by County](#) Monday, November 23, 2020
- [EARLY RELEASE: The Advisory Committee on Immunization Practices' Ethical Principles for Allocating Initial Supplies of COVID-19 Vaccine - United States, 2020](#) Monday, November 23, 2020
- [Cases in the U.S.](#) Monday, November 23, 2020
- [Healthcare Facilities That Have Implemented COVID-19 Electronic Case Reporting](#) Monday, November 23, 2020
- [Providing Spiritual and Psychosocial Support to People with COVID-19 at Home \(Non-US Settings\)](#) Monday, November 23, 2020
- [Busting Myths and Misconceptions about COVID-19 Vaccination](#) Monday, November 23, 2020
- [Targeted Wastewater Surveillance at Facilities, Institutions, and Workplaces](#) Monday, November 23, 2020
- [Developing a Wastewater Surveillance Sampling Strategy](#) Monday, November 23, 2020
- [Wastewater Surveillance Testing Methods](#) Monday, November 23, 2020
- [Wastewater Surveillance Data Reporting & Analytics](#) Monday, November 23, 2020
- [Public Health Interpretation and Use of Wastewater Surveillance Data](#) Monday, November 23, 2020
- [State Public Health Veterinarians and Animal Health Officials](#) Monday, November 23, 2020
- [Recommendations for Tribal Ceremonies and Gatherings During the COVID-19 Outbreak](#) Monday, November 23, 2020
- [Crew Disembarkations through Commercial Travel](#) Monday, November 23, 2020
- [Investigating a COVID-19 Case](#) Monday, November 23, 2020
- [Contact Tracing for COVID-19](#) Monday, November 23, 2020
- [Contact Tracing Resources for Health Departments](#) Monday, November 23, 2020
- [Cases & Deaths by County](#) Sunday, November 22, 2020
- [Cases in the U.S.](#) Sunday, November 22, 2020
- [Testing and International Air Travel](#) Saturday, November 21, 2020
- [How CDC Determines the Level of a Country's COVID-19 Travel Health Notice](#) Saturday, November 21, 2020
- [COVID-19 Travel Recommendations by Country](#) Saturday, November 21, 2020
- [After You Travel](#) Saturday, November 21, 2020
- [Travel: Frequently Asked Questions and Answers](#) Saturday, November 21, 2020
- [EARLY RELEASE: Trends in County-Level COVID-19 Incidence in Counties With and Without a Mask Mandate - Kansas, June 1-August 23, 2020](#) Friday, November 20, 2020
- [EARLY RELEASE: COVID-19 Outbreak Associated with a 10-Day Motorcycle Rally in a Neighboring State - Minnesota, August-September 2020](#) Friday, November 20, 2020
- [Scientific Brief: Community Use of Cloth Masks to Control the Spread of SARS-CoV-2](#) Friday, November 20, 2020
- [Guidance for SARS-CoV-2 Point-of-Care Testing](#) Friday, November 20, 2020
- [10 Things Healthcare Professionals Need to Know about U.S. COVID-19 Vaccination Plans](#) Friday, November 20, 2020

## CDC Guidance Documents

<https://www.cdc.gov/coronavirus/2019-ncov/communication/guidance-list.html?Sort=Date%3A%3Adesc>

### [Public Health Guidance for Potential COVID-19 Exposure Associated with International or Domestic Travel](#)

CDC's recommendations for travel-associated exposures. Date: 11/23/20

Audience: [Federal, State & Local Government](#), [Healthcare Professionals](#)

### [Prioritizing COVID-19 Contact Tracing Mathematical Modeling Methods and Findings](#)

The page presents emerging modeling data regarding timeframes for effectiveness. Date: 11/22/20

Audience: [Health Departments](#)

### [Prioritizing Case Investigations and Contact Tracing for COVID-19 in High Burden Jurisdictions](#)

The page provides guidance to health departments regarding prioritization recommendations for contact tracing and case investigation.

Date: 11/22/20

Audience: [Contact Tracing for COVID-19](#)

This section provides steps and consideration that jurisdictions can use to develop a protocol for the tracing of close contacts. Date: 11/22/20

Audience: [Health Departments](#)

### [Investigating a COVID-19 Case](#)

This section provides a step-by-step guide for conducting a COVID-19 case investigation, including operational questions that a jurisdiction should consider while planning their activities. Date: 11/22/20

Audience: [Health Departments](#)

### [Strategies for Optimizing the Supply of Facemasks](#)

Learn how to optimize face masks during COVID-19. Date: 11/21/20

Audience: [Healthcare Administrators](#)

### [Collection and Submission of Postmortem Specimens from Deceased Persons with Confirmed or Suspected COVID-19](#)

Learn about CDC's guidance on collection and submission of postmortem specimens from deceased persons under investigation for COVID-19. Date: 11/21/20

Audience: [Federal, State & Local Government](#), [Employers, Business Owners & Community Leaders](#), [Health Departments](#), [Healthcare Professionals](#)

### [Preparing for COVID-19 in Nursing Homes](#)

Learn how to prepare and respond to COVID-19 in nursing home and long-term care facilities. Date: 11/19/20

Audience: [Employers, Business Owners & Community Leaders](#), [Individuals & Consumers](#), [Parents & Caregivers](#)











# COVID-19 By the Numbers

<https://www.cdc.gov/coronavirus/2019-ncov/cdcresponse/by-the-numbers.html>

## COVID-19 RESPONSE BY THE NUMBERS

As of November 23, 2020

Accessible: [www.cdc.gov/coronavirus/2019-ncov/cdcresponse/by-the-numbers.html](https://www.cdc.gov/coronavirus/2019-ncov/cdcresponse/by-the-numbers.html)

	<b>7,763</b>	CDC personnel supporting the outbreak response		<b>36.3+ million</b>	Times people have used CDC's online Coronavirus Self-Checker
	<b>1,423</b>	CDC deployers who have conducted <b>2,619</b> deployments to <b>229</b> cities across the United States and abroad		<b>596,000+</b>	Calls and emails to CDC-INFO
	<b>156</b>	COVID-19 studies published in CDC's Morbidity and Mortality Weekly Report (MMWR)		<b>2.0+ billion</b>	Times people have looked for information on CDC websites
	<b>3,940</b>	Documents providing information and guidance for government agencies, businesses, and the public		<b>2.6+ billion</b>	Social media impressions on <b>7,602</b> CDC response-related posts
	<b>176.8+ million</b>	COVID-19 tests conducted by public and private laboratories in the United States		<b>39,000+</b>	Inquiries from doctors, nurses, or other clinical staff and health departments received by CDC



[cdc.gov/coronavirus](https://cdc.gov/coronavirus)

CS316565-A



# California Takes Action to Combat COVID-19

<https://www.gov.ca.gov/california-takes-action-to-combat-covid-19/>

## State Data

<https://covid19.ca.gov/>  
<https://update.covid19.ca.gov/#top>  
<https://www.cdph.ca.gov/Programs/CID/DCDC/Pages/Immunization/ncov2019.aspx#>

## “Safer Economy Blueprint”

<https://covid19.ca.gov/safer-economy>

## Blueprint for a Safer Economy – COVID-19 and Equity

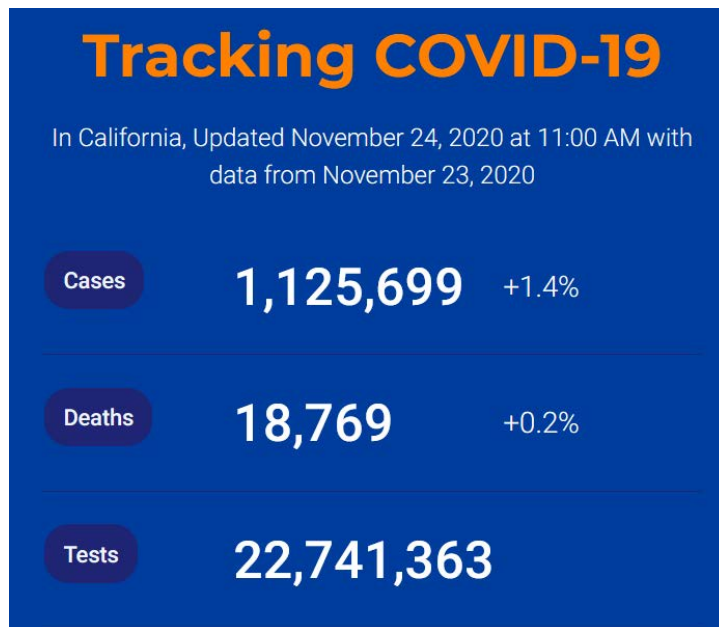
<https://www.cdph.ca.gov/Programs/CID/DCDC/Pages/COVID-19/CaliforniaHealthEquityMetric.aspx>  
<https://covid19.healthylivesindex.org/>  
<https://map.healthylivesindex.org/>

## Statewide industry guidance to reduce risk

<https://covid19.ca.gov/industry-guidance/#top>  
<https://www.cdph.ca.gov/Programs/CID/DCDC/Pages/Guidance.aspx>

## Data models

<https://covid19.ca.gov/data-and-tools/>



## Office of Governor GAVIN NEWSOM

Press Releases, Executive Orders, Media Advisories, Proclamations, and “On the Record” Column

<https://www.gov.ca.gov/newsroom/>

## California COVID-19 By the Numbers

November 23, 2020

Numbers as of November 22, 2020

COVID-19 Cases

1,110,370 (+8,337)

Fatalities

18,726 (+50)

Ages of Confirmed Cases

122,672	662,497	208,339	115,905	957
0-17	18-49	50-64	65+	Unknown/Missing

Gender of Confirmed Cases

562,480	539,261	8,629
Female	Male	Unknown/Missing

Hospitalizations

Confirmed COVID-19		Suspected COVID-19	
5,459	1,333	795	122
Hospitalized	in ICU	Hospitalized	in ICU

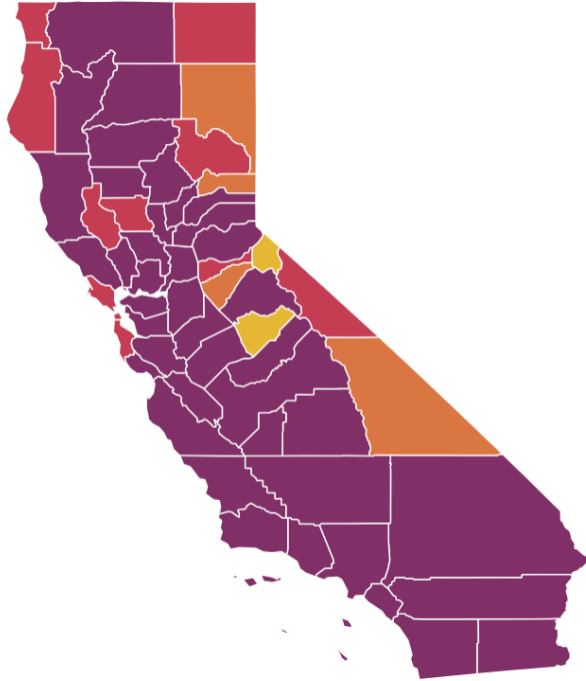
Your actions save lives.  
[covid19.ca.gov](https://covid19.ca.gov)





# Current tier assignments as of November 16, 2020

Tier assignments may occur any day of the week and may occur more than once a week.



Statewide metrics

16.5 New COVID-19 positive cases per day per 100K

5.2% Positivity rate

Find a county

Click on the map for updated metrics

- Widespread
- Substantial
- Moderate
- Minimal

County risk level	Adjusted case rate* 7-day average of daily COVID-19 cases per 100K with 7-day lag, adjusted for number of tests performed	Positivity rate** 7-day average of all COVID-19 tests performed that are positive	
		Entire county	Healthy equity quartile
<b>WIDESPREAD</b> Many non-essential indoor business operations are closed	<b>More than 7.0</b> Daily new cases (per 100k)	<b>More than 8.0%</b> Positive tests	
<b>SUBSTANTIAL</b> Some non-essential indoor business operations are closed	<b>4.0 – 7.0</b> Daily new cases (per 100k)	<b>5.0 – 8.0%</b> Positive tests	<b>5.3 – 8.0%</b> Positive tests
<b>MODERATE</b> Some indoor business operations are open with modifications	<b>1.0 – 3.9</b> Daily new cases (per 100k)	<b>2.0 – 4.9%</b> Positive tests	<b>2.2 – 5.2%</b> Positive tests
<b>MINIMAL</b> Most indoor business operations are open with modifications	<b>Less than 1.0</b> Daily new cases (per 100k)	<b>Less than 2.0%</b> Positive tests	<b>Less than 2.2%</b> Positive tests

\*Small counties (those with a population less than 106,000) may be subject to alternate case assessment measures for purposes of tier assignment.

\*\*Health equity metric is not applied for small counties. The health equity metric is used to move to a less restrictive tier.

	Higher Risk → Lower Risk of Community Disease Transmission			
	Widespread Tier 1	Substantial Tier 2	Moderate Tier 3	Minimal Tier 4
Measure*				
Adjusted Case Rate for Tier Assignment** (Rate per 100,000 excluding prison cases, 7 day average with 7 day lag)	>7	4-7	1-3.9	<1
Testing Positivity*** (Excluding prison cases, 7 day average with 7 day lag)	>8%	5-8%	2.4.9%	<2%

## Guidance Documents: Coronavirus Disease 2019 (COVID-19)

<https://www.cdph.ca.gov/Programs/CID/DCDC/Pages/Guidance.aspx>

- [Limited Stay At Home Order](#) 11/19/2020
  - [Limited Stay At Home Order](#) FAQ 11/19/2020
- [Guidance on Face Shields](#) 11/17/2020
  - [Protector facial Preguntas frecuentes](#) 11/17/2020
- [Blueprint for a Safer Economy](#) 11/16/2020
  - [Proyecto para una economía más segura](#) 11/16/2020
- [Guidance for the Use of Face Coverings](#) 11/16/2020
  - [Guía para el uso de mascarillas](#) 11/16/2020
- [Bamlanivimab Distribution Fact Sheet](#) 11/13/2020
- [Guidance for the Prevention of COVID-19 Transmission for Gatherings](#) 11/13/2020
  - [Guía para reuniones privadas](#) 11/13/2020
- [Travel Advisory](#) 11/13/2020
  - [Aviso de Seguridad para Viajeros](#) 11/13/2020

## CDPH News Releases 2020

<https://www.cdph.ca.gov/Programs/OPA/Pages/New-Release-2020.aspx>

**November 23, 2020 - Today, the California Department of Public Health (CDPH) announced membership in the Community Vaccine Advisory Committee with broad representation from organizations throughout California to provide input into the distribution and allocation of the COVID-19 vaccine.**

### State Officials Announce Latest COVID-19 Facts

**November 23, 2020 - The California Department of Public Health (CDPH) today announced the most recent statistics on COVID-19.**

### State Officials Announce Latest COVID-19 Facts

**November 22, 2020 - The California Department of Public Health (CDPH) today announced the most recent statistics on COVID-19.**

### State Officials Announce Latest COVID-19 Facts

**November 21, 2020 - The California Department of Public Health (CDPH) today announced the most recent statistics on COVID-19.**



# Riverside County Data

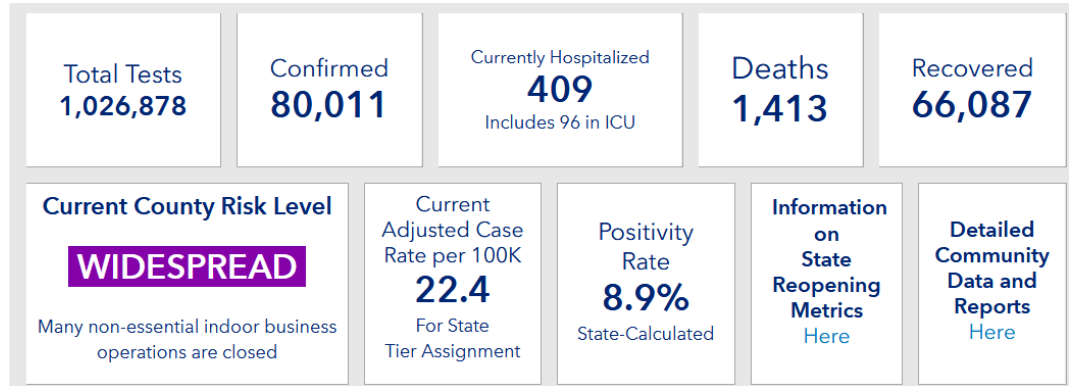
<https://www.rivcoph.org/coronavirus>

## RUHS Public Health News:

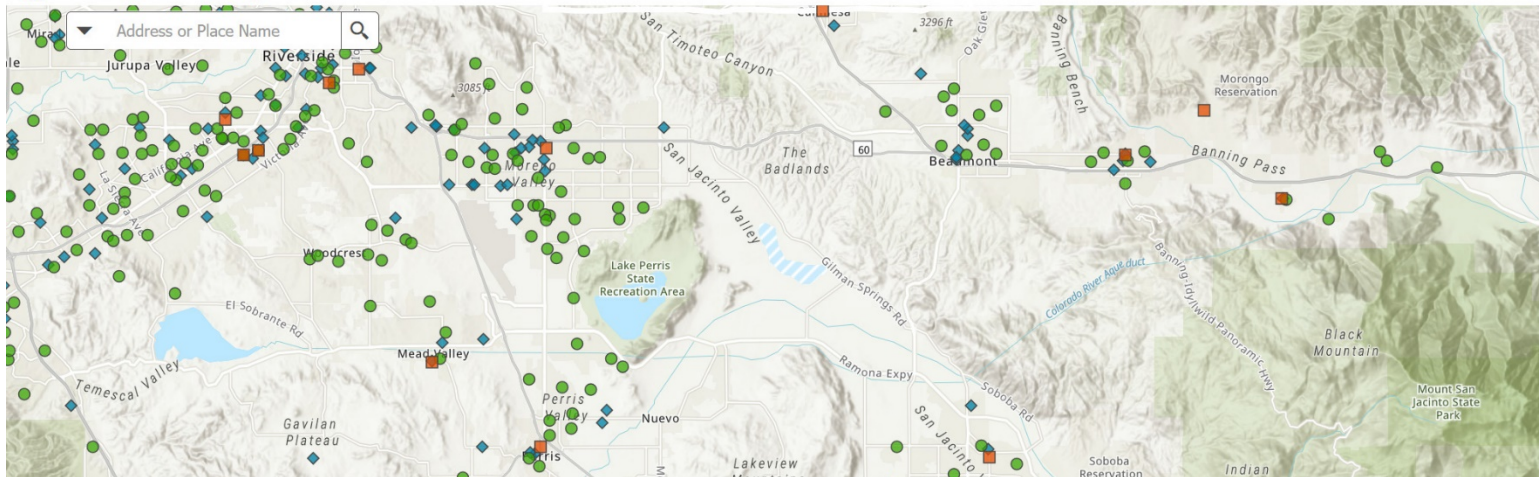
- [COVID-19 Vaccination Phases](#) - November 23, 2020
- Health officials urge Riverside County residents to keep holiday gatherings 'Smaller, Shorter, Safer' [English](#) / [Spanish](#)- October 29, 2020
- [MSJC Teams with County Public Health to Provide Free COVID-19 Testing](#) - November 12, 2020

Dashboard -Click [here](#) for more detailed city/community data and reports

Need Food Access – Click [here](#)



## Riverside County Food Access Sites



Allow this app to use your location, or type in an address to find locations providing food and meals during COVID-19 emergency in Riverside County

- ◆ Food Pantries
- Senior Meals
- School Meals

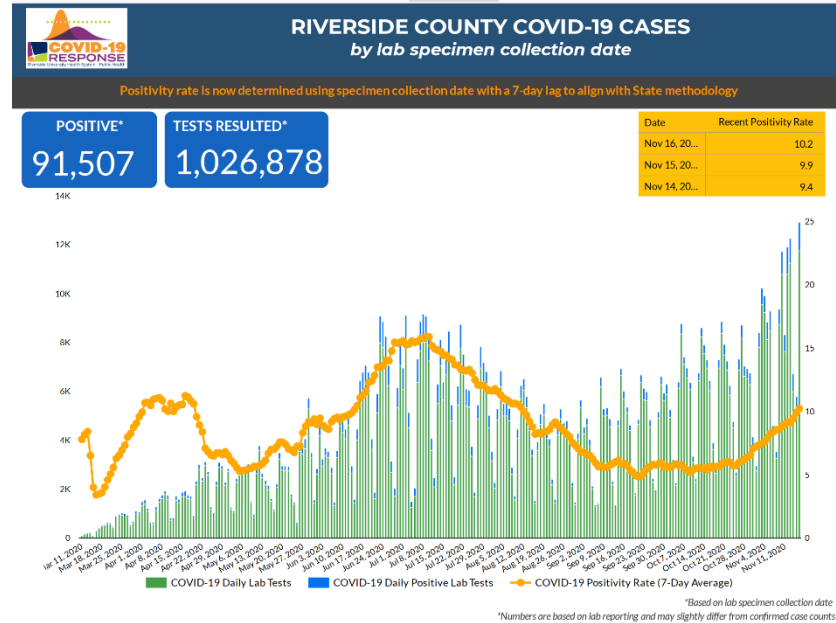
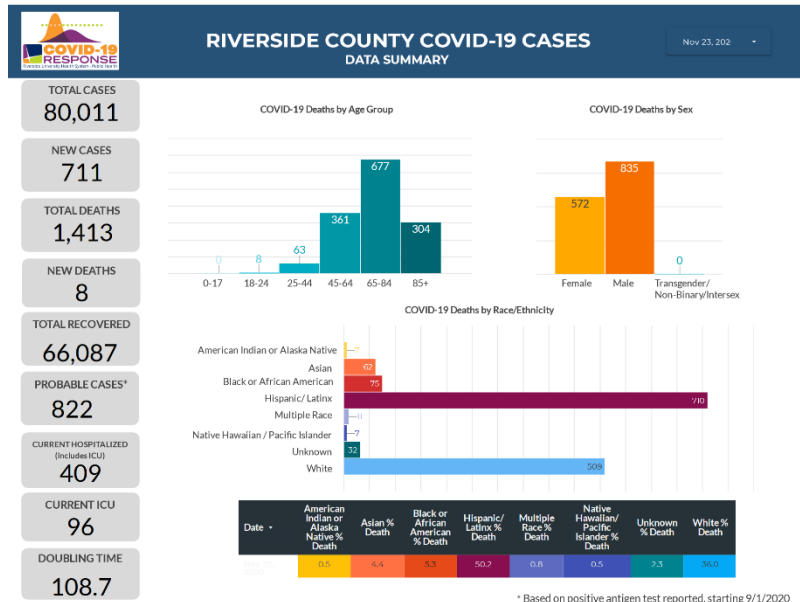
Find address or place

Show results within 3 Miles

0  10

# Daily Epidemiology Summary updated 11-20-2020

[https://www.rivcoph.org/Portals/0/Documents/CoronaVirus/November/Dashboard/5/11.23.20%20External%20Daily\\_COVID-19\\_Updates.pdf?ver=2020-11-23-132805-570&timestamp=160616695037](https://www.rivcoph.org/Portals/0/Documents/CoronaVirus/November/Dashboard/5/11.23.20%20External%20Daily_COVID-19_Updates.pdf?ver=2020-11-23-132805-570&timestamp=160616695037)



## Riverside County COVID-19 Vaccination Phases

[https://www.rivcoph.org/Portals/0/Documents/CoronaVirus/November/News/COVID%20Vaccines%20Flyer-Eng\\_Span.pdf?ver=2020-11-23-154140-270&timestamp=1606174913252](https://www.rivcoph.org/Portals/0/Documents/CoronaVirus/November/News/COVID%20Vaccines%20Flyer-Eng_Span.pdf?ver=2020-11-23-154140-270&timestamp=1606174913252)

# COVID-19 Vaccine Distribution Phases

## Phase 1

Limited supplies of COVID-19 vaccine available. Initial efforts reaching critical populations in two sub-phases

### PHASE 1-A:

- Healthcare Personnel Treating Patients with COVID-19
- First Responders



### PHASE 1-B:

- Other Essential Workers
- People at High Risk for Severe Illness or Death (including people 65 years of age & older)



## Phase 2

Large Number of Vaccine Doses Available to Vaccinate the remainder of Phase 1, Critical Populations & the General Public




## Phase 3

Sufficient Supply of Vaccine for the Entire Population





# Weather

 <b>National Weather Service</b> <b>San Diego, California</b>		<b>Weather Threats Outlook</b> 1:00 PM PST Monday, November 23, 2020						
County	Zone	Mon 11/23	Tue 11/24	Wed 11/25	Thu 11/26	Fri 11/27	Sat 11/28	Sun 11/29
San Diego	Beach/Marine	None	None	None	None	None	None	None
	Coast	None	None	None	None	Fire Weather Breezy	None	None
	Valleys	None	None	None	None	Fire Weather Breezy	Fire Weather Breezy	Fire Weather
	Mountains	Breezy	None	None	Breezy	Fire Weather Breezy	Fire Weather Breezy	Fire Weather
	Deserts	Breezy	None	None	Breezy	None	None	None
Orange	Beach	None	None	None	None	None	None	None
	Coast	None	None	None	None	Fire Weather Breezy	Fire Weather Breezy	Fire Weather
	Inland	None	None	None	Fire Weather Breezy	Fire Weather Breezy	Fire Weather Breezy	Fire Weather
	Mountains	None	None	None	Fire Weather Breezy	Fire Weather Breezy	Fire Weather Breezy	Fire Weather
Riverside	Inland Empire	None	Fire Weather Breezy	None	Fire Weather Breezy	Fire Weather Breezy	Fire Weather Breezy	Fire Weather
	Mountains	Breezy	Fire Weather Breezy	None	Fire Weather Breezy	Fire Weather Breezy	Fire Weather Breezy	Fire Weather
	Desert	Breezy	None	None	Breezy	Breezy	Breezy	None
San Bernardino	Inland Empire	None	Fire Weather Breezy	None	Fire Weather Breezy	Fire Weather Breezy	Fire Weather Breezy	Fire Weather
	Mountains	Breezy	Fire Weather Breezy	None	Fire Weather Breezy	Fire Weather Breezy	Fire Weather Breezy	Fire Weather
	Desert	Breezy	None	None	Breezy	None	None	None
		Impact Threat Levels	None	Low	Medium	High	Extreme	

Latest hazard threat table: <https://www.wrh.noaa.gov/sgx/event/dsstable.php>

<https://www.weather.gov/forecastpoints#>

Have a Happy and safe thanksgiving

