



****Extraordinary Assumptions:** There are a lot of different data sources in this report not all of them match but aid to provide an overall picture of the current situation. COVID-19 Data Source Comparison - https://covid-19.splunkforgood.com/covid_19_datasource_comparison

Daily Situation Summary

Thursday, November 19, 2020

As of 10:00 AM

COVID-19 by the Numbers

11/19/2020	Riverside	Imperial	Kern	Los Angeles*	Orange	San Bernardino	San Diego	San Luis Obispo	Santa Barbara	Ventura	California	United States	Global
Total Cases	77,079	14,204	36,164	340,933	65,757	76,134	66,321	5,235	10,597	16,797	1,047,789	11,465,722	55,928,327
New Cases	630	93	115	2,155	361	1,733	718	74	32	106	9,811	165,087	594,542
Total Cases Per Capita	3,234	7,882	4,095	3,376	2,078	3,565	2,008	1,860	2,388	1,981	2,676	3,469	727
New Cases Per Capita	26.43	51.60	13.02	21.34	11.41	81.16	21.74	26.29	7.21	12.50	25.06	49.94	7.73
Recovered	65,279	13,235	17,923	Not Reported	57,094	70,598	57,161	4,608	10,268	14,974	524,955	7,179,367	39,587,201
Total Deaths	1,374	351	432	7,299	1,526	1,098	933	34	133	173	18,360	249,670	1,344,003
New Deaths	0	0	0	24	0	0	7	0	0	1	61	1,836	9,989
Deaths Per Capita	57.65	194.77	48.92	72.28	48.23	51.42	28.25	12.08	29.97	20.40	46.90	75.53	17.46
Presumptive active cases	10,426	618	17,809		7,137	4,438	8,227	593	196	1,650	504,474	4,036,685	14,997,123
% of State's Cases	7.36%	1.36%	3.45%	32.54%	6.28%	7.27%	6.33%	0.50%	1.01%	1.60%	9.14%	20.50%	
Currently in Hospitals	409	63	96	1,542	362	484	418	12	20	58	5,078		
Total Hospital Beds	3,469	265	1,305	20,249	5,937	4,095	6,939	460	688	1,234	68,974		
Currently in ICU	86	19	19	349	90	107	118	1	3	22	1,148		
ICU Beds Available	46	1	45	607	171	96	254	27	60	29	1,984		
Case Fatality Rate	1.783%	2.471%	1.195%	2.141%	2.321%	1.442%	1.407%	0.649%	1.255%	1.030%	1.752%	2.178%	2.403%
Population*	2,383,286	180,216	883,053	10,098,052	3,164,182	2,135,413	3,302,833	281,455	443,738	848,112	39,148,760	330,544,225	7,695,773,000
% of Population	6.09%	0.46%	2.26%	25.79%	8.08%	5.45%	8.44%	0.72%	1.13%	2.17%	0.32%	0.1490%	

Sources: CDPH, WHO, CDC

The date for which case statistics and hospital data were reported. Hospital COVID data are self-reported through a portal managed by the California Hospital Association and pulled at 2pm. COVID case statistics are reported by local health departments to CalREDIE and are pulled at 2pm. Hospital data and case statistics are integrated by the California Department of Technology and made available through the Open Data Portal the following morning. CA Open Data Portal is at least 24 Hours behind although a backlog of new case reports at the State level has ostensibly been cleared, some County dashboards still contain notes that indicate data are missing. *California-Demographics.com made by Cubit – a demographic data provider & census.gov

Presumptive active cases - A calculation (Total Cases - Recovered - Dead) (* LA County does not report recovery rates)

- News**
More detail on page 2
- Information (Mask and EPA)**
More detail on page 4
- US Data**
More detail on page 9
- State Data**
More detail on page 15
- Riverside County Data**
More detail on page 18
- Weather**
More detail on page 19

News – The collection of news articles is related to COVID-19. The inclusion or order of articles is not intended to reflect their importance, nor is it intended to endorse the political viewpoints or affiliations included in news coverage.

More than 900 Mayo Clinic staff members diagnosed with Covid-19 in Midwest over two weeks

- More than 900 staff members across the Midwest Mayo Clinic system have been diagnosed with Covid-19 over the last 14 days,
- That's about 30% of the total number who have tested positive since March.
- "Our staff are being infected mostly due to community spread (93% of staff infections), and this impacts our ability to care for patients," Kelley Luckstein wrote to CNN in a Wednesday email.
- Across the Midwest, Mayo Clinic currently has about 1,500 staff members with work restrictions related to Covid-19 exposures or diagnosis, Luckstein said.

<https://www.cnn.com/2020/11/19/us/mayo-clinic-900-staff-positive-covid/index.html>

LA County Public Health to Update Health Officer Order

- As COVID-19 cases surge and hospitalizations continue to increase, the Los Angeles County Health Officer Order will be modified with an effective date of Friday, November 20 to reduce the possibility for crowding and reduce the potential for exposures in settings where people are not always wearing their face coverings in an effort to prevent more cases, increased hospitalizations and more deaths.
- On Friday, the following will go into effect:
 - Private outdoor gatherings may only include 15 people who are from no more than 3 households, including the host household.
 - The number of patrons at outdoor restaurants, breweries and wineries will be limited to 50% maximum outdoor capacity. Restaurants, breweries, wineries, bars, and all other non-essential retail establishments must close from 10 p.m. to 6 a.m. This is not a curfew, but rather restrictions on operating hours. As permitted to operate, businesses can still offer pick-up and delivery services outside of these hours.
 - The number of customers at cardrooms, outdoor mini-golf, go-karts and batting cages will be limited to 50% maximum outdoor capacity.
 - Non-essential businesses permitted to operate indoors - including retail stores, offices, personal care services - will be limited to 25% of the maximum occupancy allowed.
 - Services at personal care establishments may only be provided by appointment to customers wearing face coverings by staff wearing face coverings.
 - Services that require either the customer or the staff to remove their face covering, such as facials and shaves, are not permitted.
 - Food and drinks cannot be served at these establishments to customers.
 - In addition, the County has established thresholds for additional actions if cases and/or hospitalizations continue to increase.

<http://publichealth.lacounty.gov/phcommon/public/media/mediapubhpdetail.cfm?prid=2813>

NIH: Mini-Lungs in a Lab Dish Mimic Early COVID-19 Infection

- Researchers have become skilled at growing an array of miniature human organs in the lab. Such lab-grown “organoids” have been put to work to better understand [diabetes](#), [fatty liver disease](#), [color vision](#), and much more. Now, NIH-funded researchers have applied this remarkable lab tool to produce mini-lungs to study SARS-CoV-2, the coronavirus that causes COVID-19.
<https://directorsblog.nih.gov/2020/11/19/mini-lungs-in-a-lab-dish-mimic-early-covid-19-infection/>

A gym trainer exposed 50 athletes to Covid-19, but no one else got sick because of a ventilation redesign

- A Virginia gym owner thought she had a nightmare scenario on her hands when she learned that 50 athletes were potentially exposed to Covid-19 particles by one of the gym's coaches. But not a single member ended up contracting the virus, thanks to the extra safety precautions and ventilation measures she put in place.
<https://www.cnn.com/2020/11/19/us/gym-ventilation-covid-trnd/index.html>

COVID-19: Riverside County Sheriff fined \$18,000 for OSHA violations at Murrieta jail

- The California Division of Occupational Safety and Health cited the Riverside County Sheriff's Department last week for several COVID-19 related violations at the Cois M. Byrd Detention Center in Murrieta related to the department's infection control procedures and lack of training on the danger of aerosol transmissible diseases.
- The five citations resulted from inspections by the state regulatory agency that took place between April 2 and Nov. 11. The agency has proposed penalties of \$17,895
<https://www.desertsun.com/story/news/health/2020/11/18/covid-19-cal-osh-cites-riverside-county-sheriff-violations-murrieta-jail/3771649001/>

RELATED reminder

California AB 685 Imposes New Notice and Reporting Obligations for COVID-19 Workplace Exposure

- Reminder the law takes effect on January 1, 2021
<https://www.littler.com/publication-press/publication/california-ab-685-imposes-new-notice-and-reporting-obligations-covid>

Riverside County coronavirus cases now third highest in state

<https://www.pe.com/2020/11/18/riverside-county-coronavirus-cases-now-third-highest-in-state/>

Californians Now Required To Wear Face Masks Outside Their Homes

- As coronavirus cases in California skyrocketed in November, public health officials "sounded the alarm" Monday, revising several safety guidelines. Californians, according to an expanded mandate, must now wear face coverings at all times when outside their homes.
https://patch.com/california/lakeelsinore-wildomar/s/hbfvo/californians-now-required-to-wear-face-masks-outside-their-homes?utm_term=article-slot-5&utm_source=newsletter-daily&utm_medium=email&utm_campaign=newsletter
Link to state: <https://www.cdph.ca.gov/Programs/CID/DCDC/Pages/COVID-19/guidance-for-face-coverings.aspx>

One Good Thing

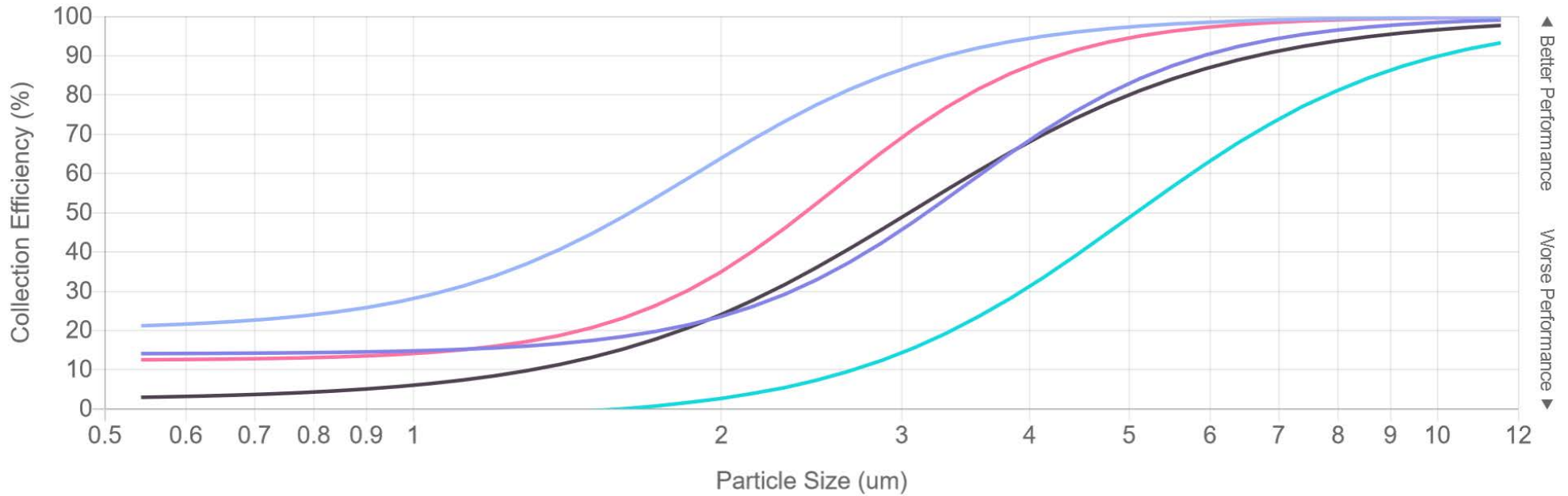
- Stories about the kindness of strangers and individuals who sacrifice for others.
<https://apnews.com/OneGoodThing> & <https://www.goodnewsnetwork.org/>

Information

Mask Data

<http://iv.colostate.edu/masktesting/>

Cloth Mask Performance



Mask Description	Breathing Resistance (inH2O) at 15 L/min	Filter Media?	Washed?
2-ply quilt cotton, no filter, 100% cotton quilt, light weave both sides	0.06	No	No
2-ply Batik cotton, no filter, 100% cotton	0.28	No	No
2-ply stretch knit cotton, no filter, 100% cotton	0.085	No	No
2-ply percale high thread ct cotton, 100% cotton higher thread count than quilt, no filter	0.13	No	No
2-ply light flannel cotton- 100% light flannel cotton both sides of mask, no filter	0.12	No	No

OnDemand Training Webinars

<https://www.epa.gov/iaq-schools/ondemand-training-webinars>

Indoor Air Quality Knowledge-to-Action Professional Training Webinar Series

<https://www.epa.gov/iaq-schools/indoor-air-quality-knowledge-action-professional-training-webinar-series>

Distance from Source (everyone)

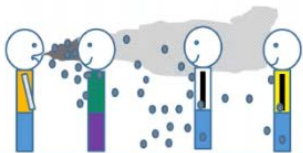
$$\text{Dose}_{\text{inhal},i} = C_i \left(\#/\text{L} \right) \times B \left(\text{L}/\text{min} \right) \times t \left(\text{min} \right) \times f_{\text{dep},i}$$

- Reduce source
- Require masks indoors
- Distance from source**
- Ventilate
- Filter
- Disinfect (air & surfaces)
- Make Use of Time
- Educate

Horizontal distance traveled to settle 1.5 m
At free-stream air speed of 5 cm/s

d_p (μm)	t (1.5 m)	x (m)
0.5	56 hr	10000
1	14 hr	2500
5	33 min	100
10	8 min	25
20	2 min	6
50	20 sec	1

50 -100 μm particles can travel > 6 ft (jet)

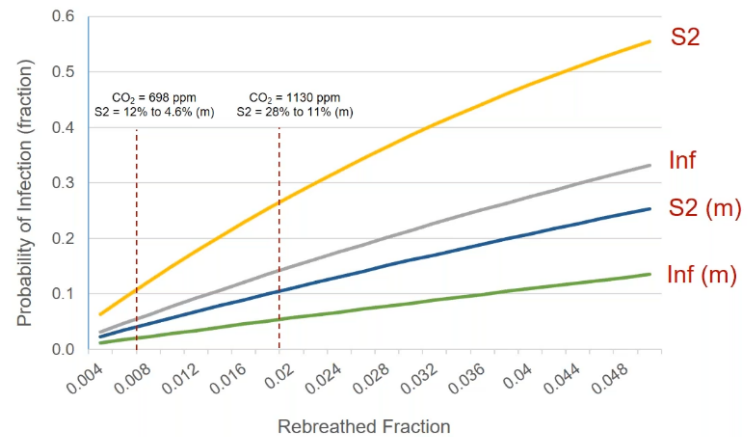


- Distancing?**
- With masks
 - Without masks
 - Age / grades

Richard L. Corsi, Ph.D., PE.
Dean, Maseeh College of Engineering & Computer Science, Portland State University



Estimates: Probability of Infection



Rudnick-Milton model w/ 1 infector (m = adjusted for masks = 64% dual effectiveness)

Quanta generation rate: 67/hr for influenza; 135/hr for SARS-CoV-2

Richard L. Corsi, Ph.D., PE.
Dean, Maseeh College of Engineering & Computer Science, Portland State University



ASHRAE Position Document on Infectious Aerosols

https://www.ashrae.org/file%20library/about/position%20documents/pd_infectiousaerosols_2020.pdf

ASHRAE Epidemic Task Force - Schools https://www.ashrae.org/file_library/technical_resources/covid-19/ashrae-reopening-schools-and-universities-c19-guidance.pdf

Ventilate

ASHRAE 62.1- 2019 *Ventilation for Acceptable Indoor Air Quality (Pre-COVID)*

5 L/s-person; 0.6 L/s-m²

If 24 students + 1 teacher in 60 m² classroom = 5 x 25 + 0.6 x 60 = 161 L/s

161 L/s = 576 m³/hr; AER = 576 m³/hr / (60 m² x 2.8 m) = **3.4/hr**

**ASHRAE Position Document on Infectious Aerosols
Approved by ASHRAE Board of Directors - April 14, 2020**

The following modifications to building HVAC system operation should be considered:

- Increase outdoor air ventilation (disable demand-controlled ventilation and open outdoor air dampers to 100% as indoor and outdoor conditions permit).
- Additional recommendations on filtration, portable air cleaners, UVGI, T & RH, etc.

https://www.ashrae.org/file%20library/about/position%20documents/pd_infectiousaerosols_2020.pdf

Richard L. Corsi, Ph.D., PE.
Dean, Maseeh College of Engineering & Computer Science, Portland State University

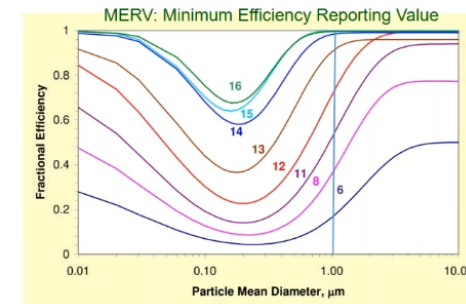
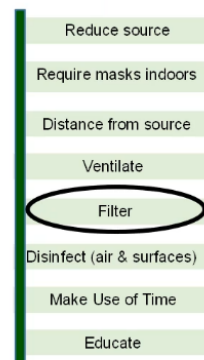


Filter

$$\text{Dose}_{\text{inhal},i} = C_i \downarrow (\#/\text{L}) \times B (\text{L}/\text{min}) \times t (\text{min}) \times f_{\text{dep},i}$$

“Improve central air and other HVAC filtration to MERV-13 or the highest level achievable.”

ASHRAE Position Document on Infectious Aerosols (2020)



Kowalski & Bahnfleth (2002)

https://www.researchgate.net/figure/Composite-of-all-MERV-filter-models-based-on-initial-conditions_fig3_237558312

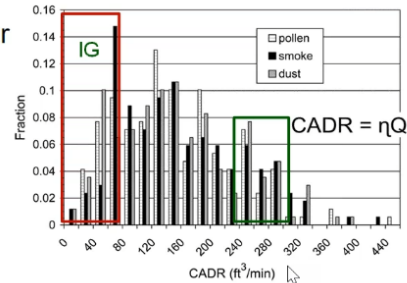
- Theoretical
- Can be worse
- System problems?

Richard L. Corsi, Ph.D., PE.
Dean, Maseeh College of Engineering & Computer Science, Portland State University



Portable Air Cleaner (PAC)

- Proven: HEPA-based portable air cleaner
- **H**igh **E**fficiency **P**articulate **A**ir
- Key: Clean Air Delivery Rate (CADR)
- $CADR = \eta \times Q$
 - η = single pass removal fraction (-)
 - Q = volumetric flowrate (ft³/min)
- Example: $\eta = 0.5$; $Q = 500$ ft³/min
- $CADR = 250$ ft³/min



Shaughnessy, R.J., and Sextro, R.G., *J of Occupational and Environmental Hygiene*, 3: 169–181(2006)



Richard L. Corsi, Ph.D., PE.
Dean, Maseeh College of Engineering & Computer Science, Portland State University



Portable Air Cleaner (PAC)

- Equivalent air changes per hour = EqACH = $CADR/V$
- Example: $V = 600$ ft² x 8 ft = 4,800 ft³
- $CADR = 300$ ft³/min
- $EqACH = 300$ ft³/min / 4,800 ft³ = 0.0625/min (or x 60 = **3.8/hr**)

$$C_i = \frac{E_i/V}{\lambda + CADR/V + k_{d,i}}$$

At steady-state

If $\lambda = 2$ /hr

$2 + 3.8 = 5.8$ /hr

66% reduction

Add to 64% masks = 88%!



Filter Microbiomes

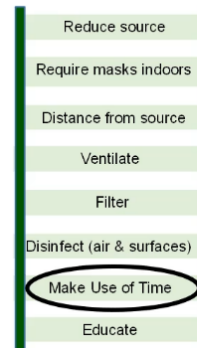
- Filters have microbiomes (e.g., fungi growth on filter cake)
- Respiratory viruses have been found on filters
- Take precautions when changing filters (central or PAC)
- Do not agitate
- Mask / goggles
- Gloves / hand hygiene
- Bag it



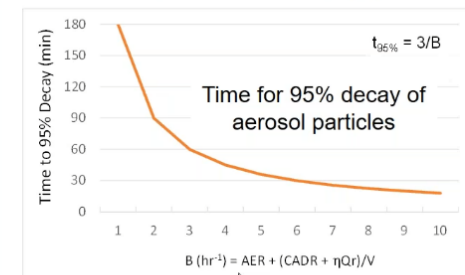
Richard L. Corsi, Ph.D., PE.
Dean, Maseeh College of Engineering & Computer Science, Portland State University

Make Use of Time

$$\text{Dose}_{\text{inhal},i} = C_i \left(\frac{\#}{L} \right) \times B \left(\frac{L}{\text{min}} \right) \times t \left(\text{min} \right) \times f_{\text{dep},i}$$



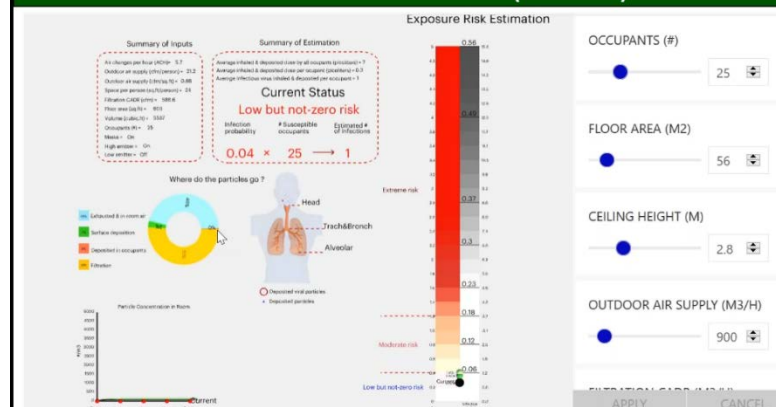
- Reduce continuous time indoors
- Reduce time w/ mask down at lunch
- Outdoor calm time after physical activity
- Classroom particle decay periods



Richard L. Corsi, Ph.D., PE.
Dean, Maseeh College of Engineering & Computer Science, Portland State University

Access Safe Air Spaces COVID-19 Risk Estimator here: www.safeairspace.com

Scenario 4 – Masks + Increased Ventilation + Filtration + Outdoor Mask Break (20 min)



Masks for all; > ASHRAE 62.1; Filtration; High emitter; 2.5 hr exposure

Risk Reduction = 92%

Richard L. Corsi, Ph.D., PE.
Dean, Maseeh College of Engineering & Computer Science, Portland State University



U.S. Data

https://covid.cdc.gov/covid-data-tracker/#cases_casesper100klast7days

<p>TOTAL CASES</p> <p>11,300,635</p> <p>+164,382 New Cases</p>	<p>CASES IN LAST 7 DAYS PER 100K</p> <p>48.8</p>	<p>TOTAL DEATHS</p> <p>247,834</p> <p>+1,602 New Deaths</p>
---	---	--

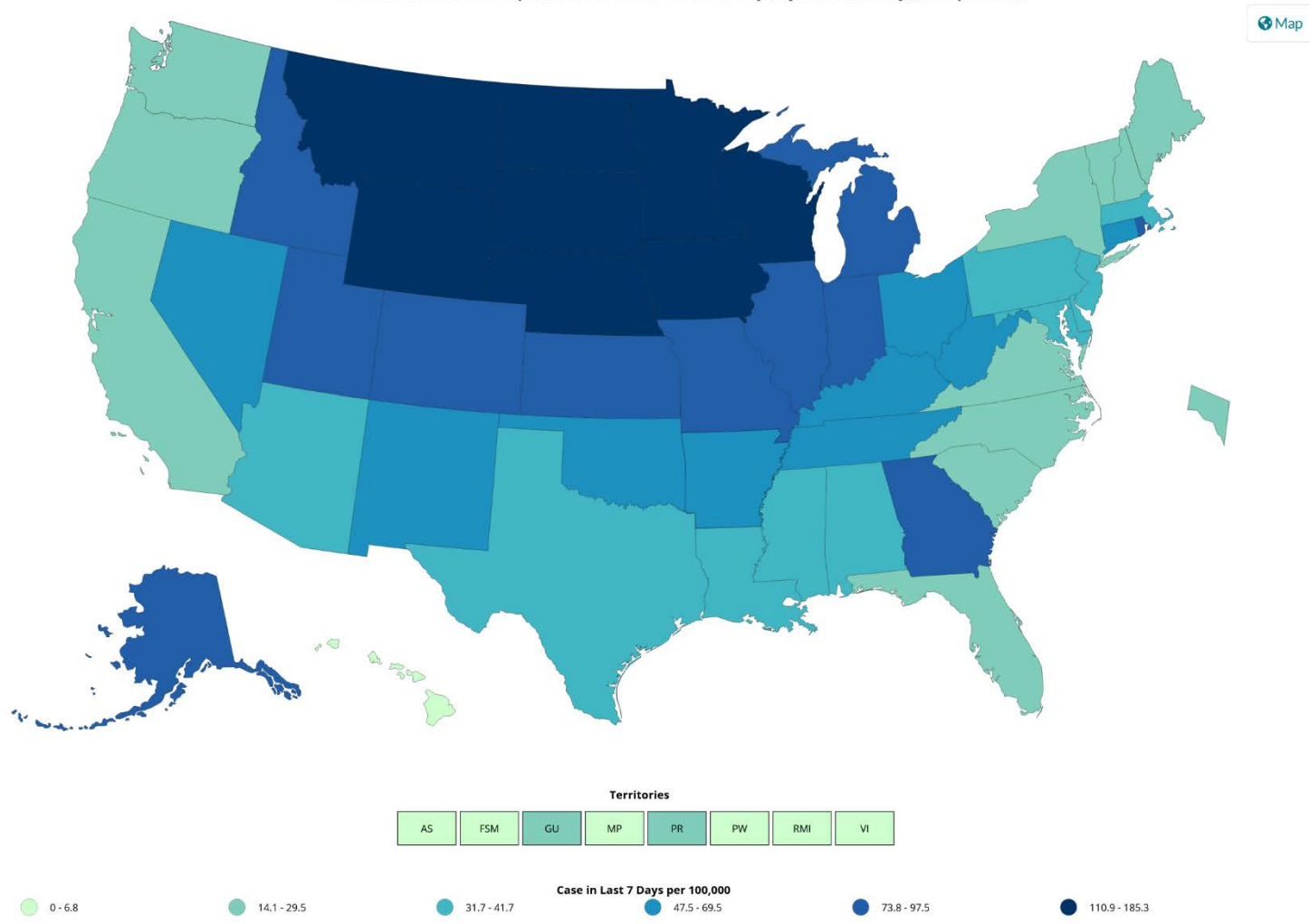
CDC | Updated: Nov 18 2020 1:07PM

View: Cases Deaths

Time period: Last 7 Days Since Jan 21, 2020

Metric: Count Rate per 100,000

US COVID-19 Case Rate Reported to the CDC in the Last 7 Days, by State/Territory (cases per 100K)



CDC COVID Data Tracker

Maps, charts, and data provided by the CDC

Case Trends ▾ Laboratory ▾ **Community Impact ▾** Unique Populations ▾ COVID-19 Home

Mobility | **Social Impact**

Social Impact COVID-19 Events in the United States

12 EVENTS
Past 7 days

Map of news reports related to social impact events resulting from the COVID-19 outbreak in the United States, such as school closures, localized outbreaks, state of emergency declarations, etc.

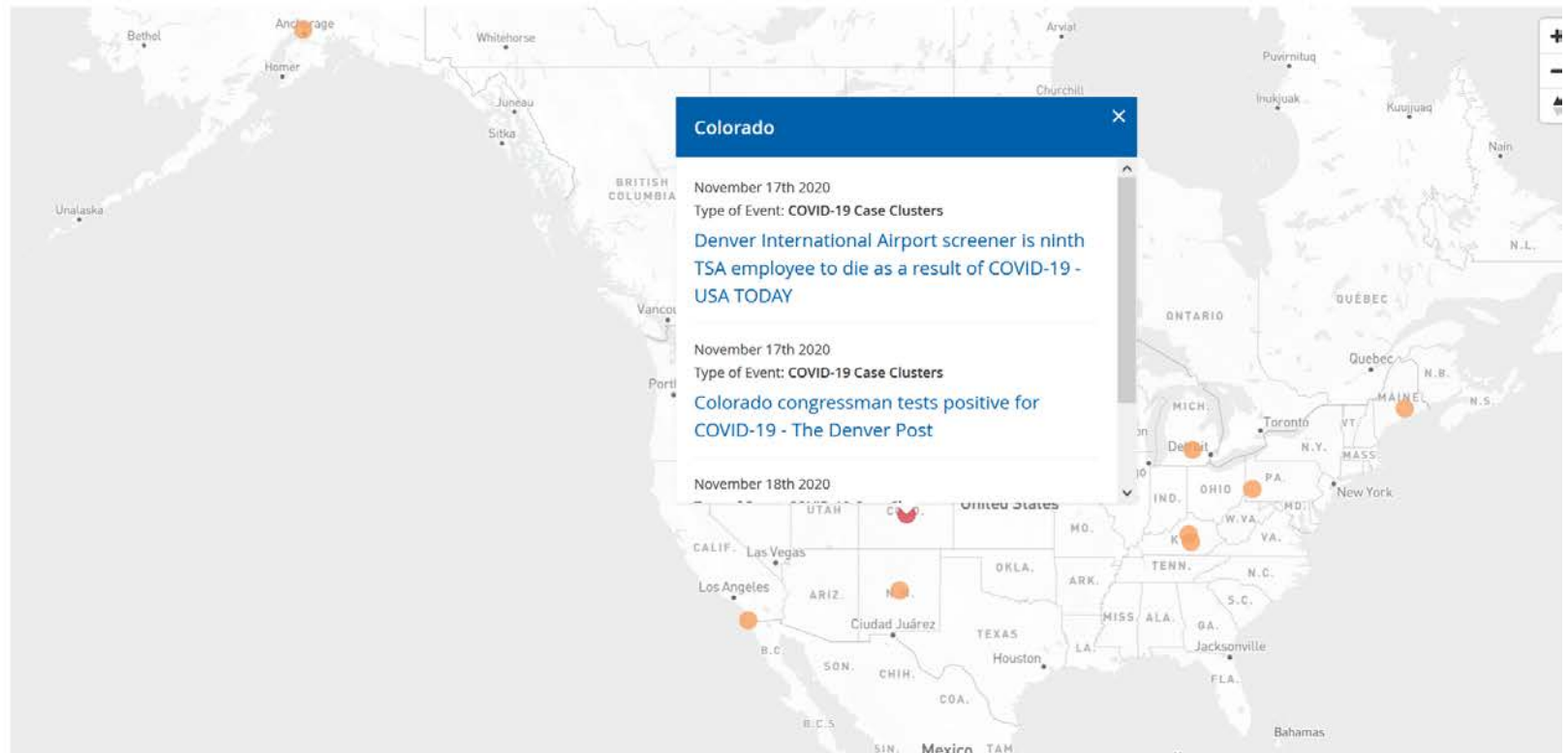
DATE RANGE

Past 7 days

TYPE OF EVENT ?

COVID-19 Case Clusters

[About this Map](#) | Developed by [HealthMap](#)



CDC Whats New

<https://www.cdc.gov/coronavirus/2019-ncov/whats-new-all.html>

- [Previous Forecasts of Total Deaths](#) Thursday, November 19, 2020
- [Social Media Toolkit: Holidays](#) Thursday, November 19, 2020
- [Celebrating Thanksgiving](#) Thursday, November 19, 2020
- [Holiday Celebrations](#) Thursday, November 19, 2020
- [COVID-19 Forecasts: Deaths](#) Thursday, November 19, 2020
- [Travel](#) Thursday, November 19, 2020
- [Cases & Deaths by County](#) Wednesday, November 18, 2020
- [Cases in the U.S.](#) Wednesday, November 18, 2020
- [Toolkit for Clinicians](#) Wednesday, November 18, 2020
- [Interim Guidance for Case Investigation and Contact Tracing in K-12 Schools](#) Wednesday, November 18, 2020
- [COVID-19 One-Stop Shop Toolkits](#) Wednesday, November 18, 2020
- [Considerations for Restaurants and Bars](#) Wednesday, November 18, 2020
- [COVID-19 and Animals](#) Wednesday, November 18, 2020
- [Clinical Questions about COVID-19: Questions and Answers](#) Wednesday, November 18, 2020
- [COVID-19 Science Update released: November 17, 2020](#) Tuesday, November 17, 2020
- [Workplaces and Businesses](#) Tuesday, November 17, 2020
- [Cases & Deaths by County](#) Tuesday, November 17, 2020
- [EARLY RELEASE: Implementation of a Pooled Surveillance Testing Program for Asymptomatic SARS-CoV-2 Infections on a College Campus - Duke University, Durham, North Carolina, August 2-October 11, 2020](#) Tuesday, November 17, 2020
- [Previous Forecasts of Total Deaths](#) Tuesday, November 17, 2020
- [Cases in the U.S.](#) Tuesday, November 17, 2020
- [COVID-19 Science Update released: November 17, 2020](#) Tuesday, November 17, 2020
- [Workplaces and Businesses](#) Tuesday, November 17, 2020
- [Crew Disembarkations through Commercial Travel](#) Tuesday, November 17, 2020
- [Considerations for Events and Gatherings](#) Tuesday, November 17, 2020
- [Staffing Resources](#) Tuesday, November 17, 2020
- [Tribal Communities](#) Tuesday, November 17, 2020
- [Data Visualization](#) Tuesday, November 17, 2020
- [Operational Considerations for Containing COVID-19 in non-US Healthcare Settings](#) Tuesday, November 17, 2020
- [COVID-19 and Animals](#) Tuesday, November 17, 2020
- [Cases & Deaths by County](#) Monday, November 16, 2020
- [Cases in the U.S.](#) Monday, November 16, 2020
- [Screening K-12 Students for Symptoms of COVID-19: Limitations and Considerations](#) Monday, November 16, 2020
- [COVID-19 Critical Infrastructure Sector Response Planning](#) Monday, November 16, 2020

CDC Guidance Documents

[Cleaning, Disinfection, and Hand Hygiene in Schools – a Toolkit for School Administrators](#)

Cleaning, Disinfection, and Hand Hygiene in Schools during COVID-19 Date: 11/18/20

Audience: [Educators & School Administrators](#)

[Considerations for Restaurant and Bar Operators](#)

Learn how restaurants and bars can protect communities during COVID-19. Date: 11/17/20

Audience: [Employers, Business Owners & Community Leaders](#)

[Operational Considerations for Personal Protective Equipment in the Context of Global Supply Shortages for Coronavirus Disease 2019 \(COVID-19\) Pandemic: non-US Healthcare Settings](#)

Considerations for personal protective equipment (PPE) in the context of global supply shortages in non-US healthcare settings. Date: 11/17/20

Audience: [Federal, State & Local Government, Healthcare Administrators](#)

[Interim Operational Considerations for Public Health Management of Healthcare Workers Exposed to or with Suspected or Confirmed COVID-19: non-U.S. Healthcare Settings](#)

These recommendations are intended to be used by healthcare facilities and public health authorities in non-US healthcare settings, particularly focusing on low- and middle-income countries, assisting with the management of HCWs exposed to a person with confirmed or suspected COVID-19. Date: 11/17/20

Audience: [Healthcare Professionals](#)

[Screening K-12 Students for Symptoms of COVID-19: Limitations and Considerations](#)

Provides guidance to K-12 schools on how to screen for COVID-19 symptoms as part of reopening schools in fall 2020. Date: 11/15/20

Audience: [Educators & School Administrators](#)

[COVID-19 Critical Infrastructure Sector Response Planning](#)

Find CDC's guidance for critical workers on how to develop a COVID-19 response plan. Date: 11/15/20

Audience: [Employers, Business Owners & Community Leaders](#)

[Care for Breastfeeding Women](#)

Find information on managing breastfeeding patients with confirmed or suspected COVID-19. Date: 11/15/20

Audience: [Doctors, Nurses](#)

[Guidance for Pharmacies](#)

Learn how to prepare for and respond to COVID-19 in pharmacies. Date: 11/12/20

Audience: [Employers, Business Owners & Community Leaders, Pharmacists](#)

[What Bus Transit Operators Need to Know about COVID-19](#)

This factsheet provides information to help bus transit employees prevent exposure to COVID-19 while working. Date: 11/11/20

Audience: [Employers, Business Owners & Community Leaders](#)

[Considerations for Wearing Masks](#)

CDC's considerations for wearing masks. Date: 11/11/20

Audience: [General Public](#)

[Meat and Poultry Processing Workers and Employers](#)

Learn what meat and poultry processing facility workers and employers need to know during COVID-19. Date: 11/11/20

Audience: [Employers, Business Owners & Community Leaders](#)

[Agriculture Workers and Employers](#)

Learn what agriculture workers and employers need to know during COVID-19. Date: 11/9/20

Audience: [Employers, Business Owners & Community Leaders](#)

[Manufacturing Workers and Employers](#)

Learn what manufacturing workers and employers need to know during COVID-19. Date: 11/9/20

Audience: [Employers, Business Owners & Community Leaders](#)

[Operational Considerations for Immunization Services During COVID-19 in Non-US Settings Focusing on Low-Middle Income Countries](#)

Learn COVID-19 operational considerations to implement immunization services in non-US countries with low or middle incomes.

Date: 11/5/20

Audience: [Federal, State & Local Government](#)

[Interim Additional Guidance for Infection Prevention and Control Recommendations for Patients with Suspected or Confirmed COVID-19 in Outpatient Hemodialysis Facilities](#)

Learn how to prepare for and respond to COVID-19 in hemodialysis facilities. Date: 11/5/20

Audience: [Healthcare Professionals](#)

[Interim U.S. Guidance for Risk Assessment and Work Restrictions for Healthcare Personnel with Potential Exposure to COVID-19](#)

Find CDC's guidance on assessing, monitoring, and restricting risk for those who work in healthcare facilities during COVID-19.

Date: 11/5/20

Audience: [Healthcare Professionals](#)

FEMA Higher Education Program Community Call Reminder, November 20, 2020

Federal Emergency Management Agency (FEMA) sent this bulletin at 11/19/2020 10:54 AM EST

FEMA Higher Education Program Community Conference Call

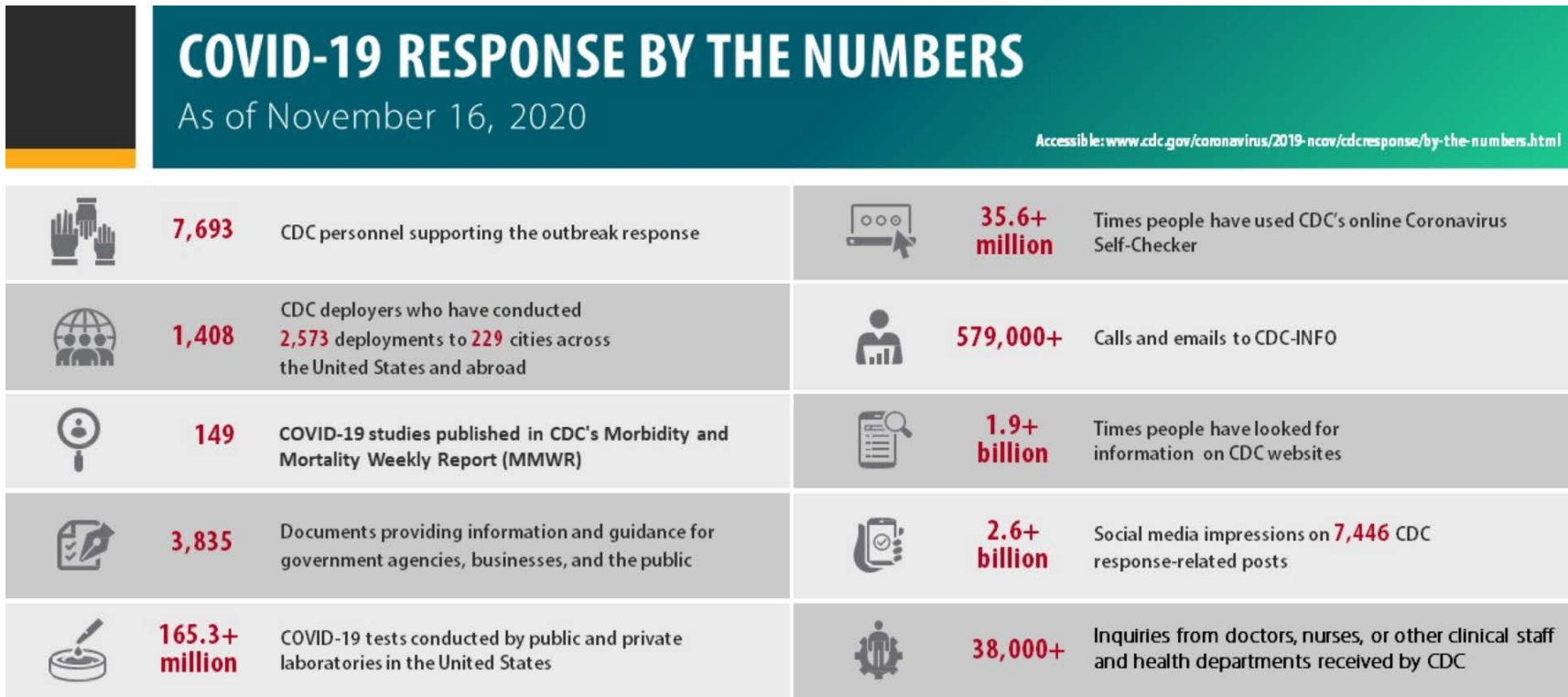
Friday, November 20, 2020

2:00-3:00 PM ET

<https://content.govdelivery.com/accounts/USDHSFEMA/bulletins/2ad56b4>

COVID-19 By the Numbers

<https://www.cdc.gov/coronavirus/2019-ncov/cdcresponse/by-the-numbers.html>



cdc.gov/coronavirus

CS316565-A



California Takes Action to Combat COVID-19

<https://www.gov.ca.gov/california-takes-action-to-combat-covid-19/>

State Data

<https://covid19.ca.gov/>
<https://update.covid19.ca.gov/#top>
<https://www.cdph.ca.gov/Programs/CID/DCDC/Pages/Immunization/ncov2019.aspx#>

“Safer Economy Blueprint”

<https://covid19.ca.gov/safer-economy>

Blueprint for a Safer Economy – COVID-19 and Equity

<https://www.cdph.ca.gov/Programs/CID/DCDC/Pages/COVID-19/CaliforniaHealthEquityMetric.aspx>
<https://covid19.healthyplacesindex.org/>
<https://map.healthyplacesindex.org/>

Statewide industry guidance to reduce risk

<https://covid19.ca.gov/industry-guidance/#top>
<https://www.cdph.ca.gov/Programs/CID/DCDC/Pages/Guidance.aspx>

Data models

<https://covid19.ca.gov/data-and-tools/>

Tracking COVID-19

In California, Updated November 18, 2020 at 11:00 AM with data from November 17, 2020

Cases **1,047,789** +0.9%

Deaths **18,360** +0.3%

Tests **21,418,543**



Office of Governor
GAVIN NEWSOM

Press Releases, Executive Orders, Media Advisories, Proclamations, and “On the Record” Column

<https://www.gov.ca.gov/newsroom/>

California COVID-19 By the Numbers

November 18, 2020

Numbers as of November 17, 2020

COVID-19 Cases

1,047,789 (+9,811)

Fatalities

18,360 (+61)

Ages of Confirmed Cases

114,812	625,550	196,717	109,763	947
0-17	18-49	50-64	65+	Unknown/Missing

Gender of Confirmed Cases

530,421	509,304	8,064
Female	Male	Unknown/Missing

Hospitalizations

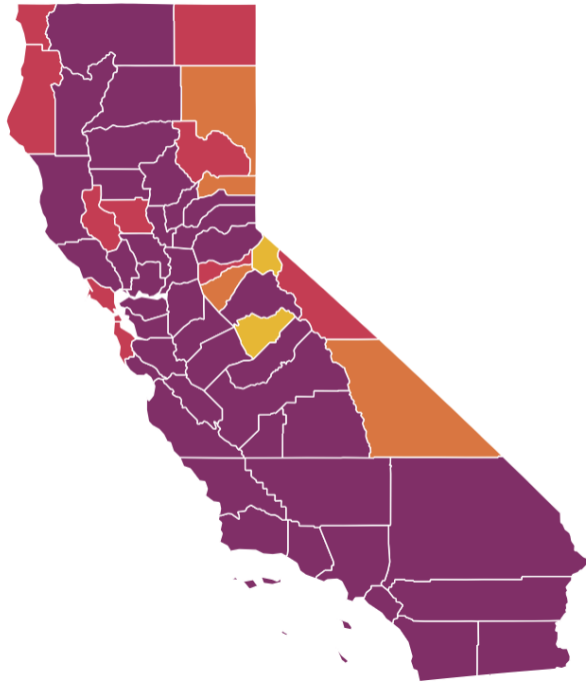
Confirmed COVID-19		Suspected COVID-19	
4,309	1,148	769	110
Hospitalized	in ICU	Hospitalized	in ICU

Your actions save lives.
covid19.ca.gov



Current tier assignments as of November 16, 2020

Tier assignments may occur any day of the week and may occur more than once a week.



Statewide metrics

16.5 New COVID-19 positive cases per day per 100K

5.2% Positivity rate

Find a county

Click on the map for updated metrics

- Widespread
- Substantial
- Moderate
- Minimal

County risk level	Adjusted case rate* 7-day average of daily COVID-19 cases per 100K with 7-day lag, adjusted for number of tests performed	Positivity rate** 7-day average of all COVID-19 tests performed that are positive	
		Entire county	Healthy equity quartile
WIDESPREAD Many non-essential indoor business operations are closed	More than 7.0 Daily new cases (per 100k)	More than 8.0% Positive tests	
SUBSTANTIAL Some non-essential indoor business operations are closed	4.0 – 7.0 Daily new cases (per 100k)	5.0 – 8.0% Positive tests	5.3 – 8.0% Positive tests
MODERATE Some indoor business operations are open with modifications	1.0 – 3.9 Daily new cases (per 100k)	2.0 – 4.9% Positive tests	2.2 – 5.2% Positive tests
MINIMAL Most indoor business operations are open with modifications	Less than 1.0 Daily new cases (per 100k)	Less than 2.0% Positive tests	Less than 2.2% Positive tests

*Small counties (those with a population less than 106,000) may be subject to alternate case assessment measures for purposes of tier assignment.
 **Health equity metric is not applied for small counties. The health equity metric is used to move to a less restrictive tier.

	Higher Risk → Lower Risk of Community Disease Transmission			
	Widespread Tier 1	Substantial Tier 2	Moderate Tier 3	Minimal Tier 4
Measure*				
Adjusted Case Rate for Tier Assignment** (Rate per 100,000 excluding prison cases, 7 day average with 7 day lag)	>7	4-7	1-3.9	<1
Testing Positivity*** (Excluding prison cases, 7 day average with 7 day lag)	>8%	5-8%	2.4.9%	<2%

State Officials Announce Latest COVID-19 Facts

November 18, 2020 - The California Department of Public Health (CDPH) today announced the most recent statistics on COVID-19.

State Officials Announce Latest COVID-19 Facts

November 17, 2020 - The California Department of Public Health (CDPH) today announced the most recent statistics on COVID-19.

State Officials Announce Latest COVID-19 Facts

November 16, 2020 - The California Department of Public Health (CDPH) today announced the most recent statistics on COVID-19.

State Officials Announce Latest COVID-19 Facts

November 15, 2020 - The California Department of Public Health (CDPH) today announced the most recent statistics on COVID-19.

State Officials Announce Latest COVID-19 Facts

November 14, 2020 - The California Department of Public Health (CDPH) today announced the most recent statistics on COVID-19.

State Officials Announce Latest COVID-19 Facts

November 13, 2020 - The California Department of Public Health (CDPH) today announced the most recent statistics on COVID-19.

State Officials Announce Latest COVID-19 Facts

November 12, 2020 - The California Department of Public Health (CDPH) today announced the most recent statistics on COVID-19.



Riverside County Data

<https://www.rivcoph.org/coronavirus>

RUHS Public Health News:

- [MSJC Teams with County Public Health to Provide Free COVID-19 Testing](#) - November 12, 2020
- [Riverside University Health System Receives \\$625,000 Grant to Expand Access to Primary Care](#) - November 10, 2020
- [CNUSD TK-6 Waiver Approved by County & State](#) - November 3, 2020
- Riverside County health officials offer alternatives to traditional Halloween celebrations [English](#) / [Spanish](#) - October 29, 2020
- Riverside County officials: It's up to all of us to return to red. Get tested [English](#) / [Spanish](#) - October 23, 2020
- State announces Riverside County moved back to purple tier, businesses to adjust within 72 hours [English](#) / [Spanish](#) - October 20, 2020
- Three free flu-shot clinics planned throughout Riverside County starting Friday [English](#) / [Spanish](#) - October 15, 2020

Dashboard -Click [here](#) for more detailed city/community data and reports

Daily Epidemiology Summary updated 11-18-2020

https://rivcoph.org/Portals/0/Documents/CoronaVirus/November/Dashboard/4/Public%20Daily_COVID-19_Updates%20-%202020-11-18.pdf?ver=2020-11-18-143025-337×tamp=1605738651907

Total Tests
963,853

Confirmed
77,636

Currently Hospitalized
338
Includes 81 in ICU

Deaths
1,383

Recovered
65,279

Current County Risk Level

WIDESPREAD

Many non-essential indoor business operations are closed

Current Adjusted Case Rate per 100K
22.4
For State Tier Assignment

Positivity Rate
8.9%
State-Calculated

Information on State Reopening Metrics [Here](#)

Detailed Community Data and Reports [Here](#)

Confirmed Cases by City of Residence (Click on map for numbers)

Updated 11/18/2020

County of Riverside, Esri, HERE, Garmin, FAO, N...

Cases in County Jails = 496; Recovered = 439; Cases in State Prisons = 3,531, Recovered = 2,961

RIVERSIDE COUNTY COVID-19 CASES

DATA SUMMARY

Nov 18, 2020

TOTAL CASES
77,636

NEW CASES
912

TOTAL DEATHS
1,383

NEW DEATHS
9

TOTAL RECOVERED
65,279

PROBABLE CASES*
649

CURRENT HOSPITALIZED (Includes ICU)
338

CURRENT ICU
81

DOUBLING TIME
106.3

COVID-19 Deaths by Age Group


COVID-19 Deaths by Sex

COVID-19 Deaths by Race/Ethnicity

Date	American Indian or Alaska Native % Death	Asian % Death	Black or African American % Death	Hispanic/Latinx % Death	Multiple Race % Death	Native Hawaiian/Pacific Islander % Death	Unknown % Death	White % Death
Nov 18, 2020	0.5	4.4	5.4	50.2	0.7	0.5	2.2	36.0

* Based on positive antigen test reported, starting 9/1/2020

Weather

 National Weather Service San Diego, California		Weather Threats Outlook 10:00 AM PST Wednesday, November 18, 2020						
County	Zone	Wed 11/18	Thu 11/19	Fri 11/20	Sat 11/21	Sun 11/22	Mon 11/23	Tue 11/24
San Diego	Beach/Marine	None	Patchy Fog	None	None	None	None	None
	Coast	None	Patchy Fog	None	None	None	None	None
	Valleys	None	None	None	None	None	None	None
	Mountains	None	None	None	None	Fire Weather	Fire Weather	Fire Weather
	Deserts	Warm	None	None	None	None	None	None
Orange	Beach	None	Patchy Fog	None	None	None	None	None
	Coast	None	Patchy Fog	None	None	None	None	None
	Inland	None	None	None	None	None	None	None
	Mountains	None	None	None	None	None	None	None
Riverside	Inland Empire	None	None	None	None	None	None	None
	Mountains	None	None	None	None	Fire Weather	Fire Weather	Fire Weather
	Desert	Warm	None	None	None	None	None	None
San Bernardino	Inland Empire	None	None	None	None	None	None	None
	Mountains	Breezy	None	None	None	Fire Weather	Fire Weather	Fire Weather
	Desert	Breezy	None	None	None	None	None	None

Impact Threat Levels

None

Low

Medium

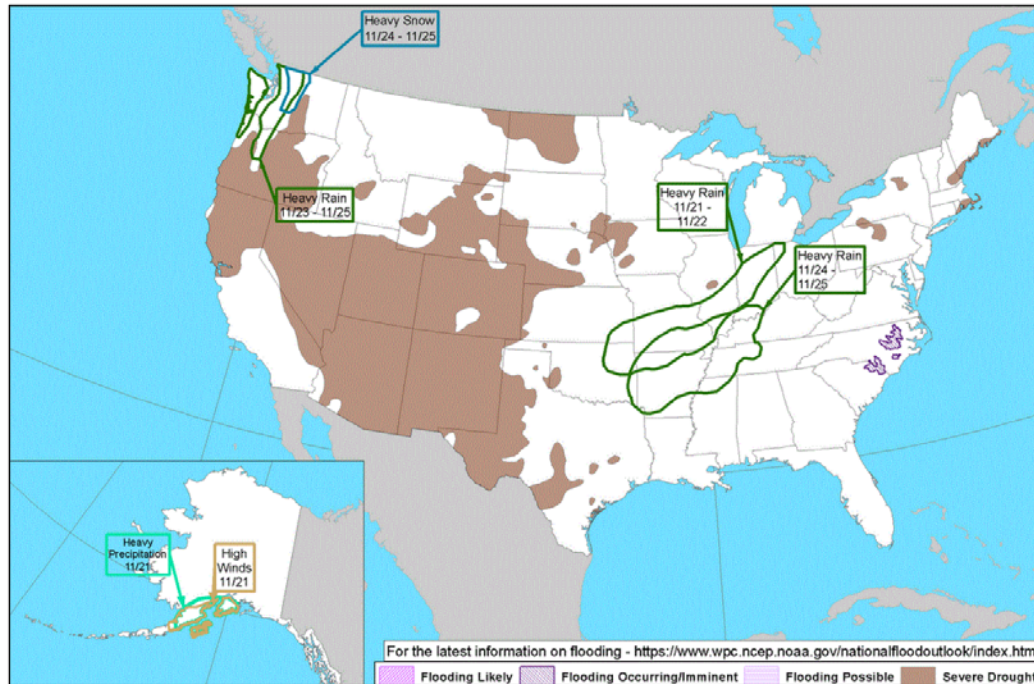
High

Extreme

Latest hazard threat table: <https://www.wrh.noaa.gov/sgx/event/dsstable.php>

<https://www.weather.gov/forecastpoints#>

Hazards Outlook – Nov 21-25



National Watch Center