



****Extraordinary Assumptions:** There are a lot of different data sources in this report not all of them match but aid to provide an overall picture of the current situation. COVID-19 Data Source Comparison - https://covid-19.splunkforgood.com/covid_19_datasource_comparison

Daily Situation Summary

Wednesday, November 18, 2020

As of 10:00 AM

COVID-19 by the Numbers

11/18/2020	Riverside	Imperial	Kern	Los Angeles*	Orange	San Bernardino	San Diego	San Luis Obispo	Santa Barbara	Ventura	California	United States	Global
Total Cases	77,079	14,204	36,164	340,933	65,757	76,134	66,321	5,235	10,597	16,797	1,047,789	11,300,635	55,064,128
New Cases	630	93	115	2,155	361	1,733	718	74	32	106	9,811	164,382	291,514
Total Cases Per Capita	3,234	7,882	4,095	3,376	2,078	3,565	2,008	1,860	2,388	1,981	2,676	3,419	716
New Cases Per Capita	26.43	51.60	13.02	21.34	11.41	81.16	21.74	26.29	7.21	12.50	25.06	49.73	3.79
Recovered	65,073	13,204	17,859	Not Reported	56,786	69,803	56,769	4,555	10,224	14,868	521,173	7,114,110	39,213,312
Total Deaths	1,374	351	432	7,299	1,526	1,098	933	34	133	173	18,360	247,834	1,328,015
New Deaths	0	0	0	24	0	0	7	0	0	1	61	1,602	3,757
Deaths Per Capita	57.65	194.77	48.92	72.28	48.23	51.42	28.25	12.08	29.97	20.40	46.90	74.98	17.26
Presumptive active cases	10,632	649	17,873		7,445	5,233	8,619	646	240	1,756	508,256	3,938,691	14,522,801
% of State's Cases	7.36%	1.36%	3.45%	32.54%	6.28%	7.27%	6.33%	0.50%	1.01%	1.60%	9.27%	20.52%	
Currently in Hospitals	409	63	96	1,542	362	484	418	12	20	58	5,078		
Total Hospital Beds	3,469	265	1,305	20,249	5,937	4,095	6,939	460	688	1,234	68,974		
Currently in ICU	86	19	19	349	90	107	118	1	3	22	1,148		
ICU Beds Available	46	1	45	607	171	96	254	27	60	29	1,984		
Case Fatality Rate	1.783%	2.471%	1.195%	2.141%	2.321%	1.442%	1.407%	0.649%	1.255%	1.030%	1.752%	2.193%	2.412%
Population*	2,383,286	180,216	883,053	10,098,052	3,164,182	2,135,413	3,302,833	281,455	443,738	848,112	39,148,760	330,544,225	7,695,773,000
% of Population	6.09%	0.46%	2.26%	25.79%	8.08%	5.45%	8.44%	0.72%	1.13%	2.17%	0.32%	0.1468%	

Sources: CDPH, WHO, CDC

The date for which case statistics and hospital data were reported. Hospital COVID data are self-reported through a portal managed by the California Hospital Association and pulled at 2pm. COVID case statistics are reported by local health departments to CalREDIE and are pulled at 2pm. Hospital data and case statistics are integrated by the California Department of Technology and made available through the Open Data Portal the following morning. CA Open Data Portal is at least 24 Hours behind although a backlog of new case reports at the State level has ostensibly been cleared, some County dashboards still contain notes that indicate data are missing. *California-Demographics.com made by Cubit - a demographic data provider & census.gov

Presumptive active cases - A calculation (Total Cases - Recovered - Dead) (* LA County does not report recovery rates)

News

More detail on page 2

US Data

More detail on page 3

State Data

More detail on page 6

Riverside County Data

More detail on page 9

Weather

More detail on page 10

News – The collection of news articles is related to COVID-19. The inclusion or order of articles is not intended to reflect their importance, nor is it intended to endorse the political viewpoints or affiliations included in news coverage.

Global warming bigger threat than coronavirus: Red Cross

- Red Cross says the world has been hit by more than 100 climate change-related disasters since the WHO declared the pandemic.
<https://www.aljazeera.com/news/2020/11/17/climate-change-bigger-threat-than-covid-red-cross>

How will poorer countries get a fair shot?

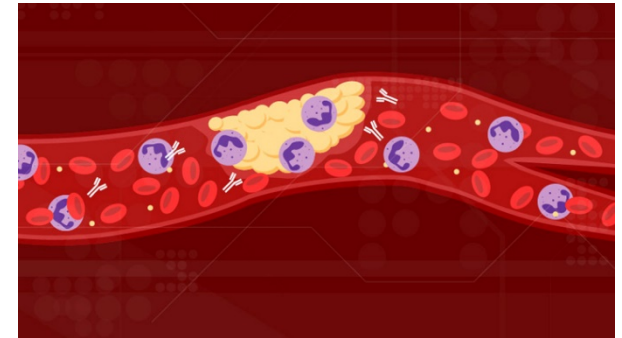
<https://www.aljazeera.com/features/2020/11/17/coronavirus-vaccine-how-will-poorer-countries-get-a-fair>

Covid-19 antibodies reduce faster in men than women – study

- Antibody levels against the virus that causes Covid-19 appear to fall faster in men than in women, a [study](#) suggests – a finding that could have implications for vaccine research.
<https://www.theguardian.com/world/2020/nov/18/covid-19-antibodies-fall-faster-in-men-than-women-study-suggests>

Can Autoimmune Antibodies Explain Blood Clots in COVID-19?

- For people with severe COVID-19, one of the most troubling complications is abnormal blood clotting that puts them at risk of having a debilitating stroke or heart attack. A new study suggests that SARS-CoV-2, the coronavirus that causes COVID-19, doesn't act alone in causing blood clots. The virus seems to unleash mysterious antibodies that mistakenly attack the body's own cells to cause clots.
<https://www.foxnews.com/us/teachers-unions-across-country-demand-stop-to-in-person-learning-amid-rising-coronavirus-cases>



Californians Now Required To Wear Face Masks Outside Their Homes

- As coronavirus cases in California skyrocketed in November, public health officials "sounded the alarm" Monday, revising several safety guidelines. Californians, according to an expanded mandate, must now wear face coverings at all times when outside their homes.

https://patch.com/california/lakeelsinore-wildomar/s/hbfvo/californians-now-required-to-wear-face-masks-outside-their-homes?utm_term=article-slot-5&utm_source=newsletter-daily&utm_medium=email&utm_campaign=newsletter

Link to state: <https://www.cdph.ca.gov/Programs/CID/DCDC/Pages/COVID-19/guidance-for-face-coverings.aspx>

Riverside County Ready For COVID-19 Hospital Surge, Official Says

- Like the rest of the state, Riverside County's coronavirus infection rate is rising, but health officials said Tuesday area hospitals are prepared for what appears to be a second-wave surge in cases — while one county supervisor continued questioning the reliability of COVID-19 data.
- "We are surpassing our previous statewide surge (in July)," county Department of Public Health Director Kim Saruwatari told the supervisors. "It's consistent with what's happening in the nation."

https://patch.com/california/lakeelsinore-wildomar/s/hbfx3/riverside-county-ready-for-covid-19-hospital-surge-official-says?utm_term=article-slot-1&utm_source=newsletter-daily&utm_medium=email&utm_campaign=newsletter



U.S. Data

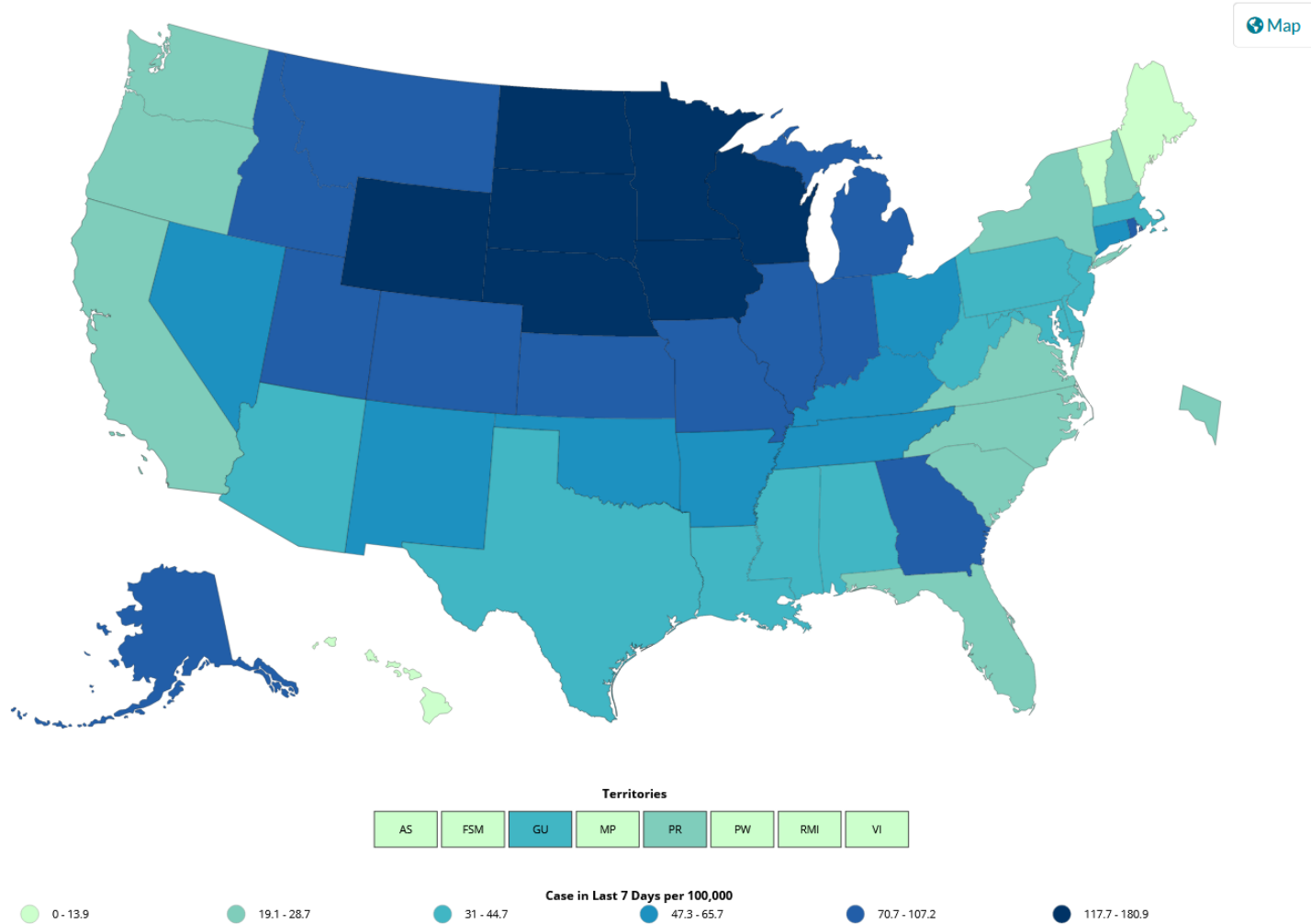
https://covid.cdc.gov/covid-data-tracker/#cases_casesper100klast7days

<p>TOTAL CASES</p> <p>11,136,253</p> <p>+151,855 New Cases</p>	<p>CASES IN LAST 7 DAYS PER 100K</p> <p>47.5</p>	<p>TOTAL DEATHS</p> <p>246,232</p> <p>+762 New Deaths</p>
---	---	--

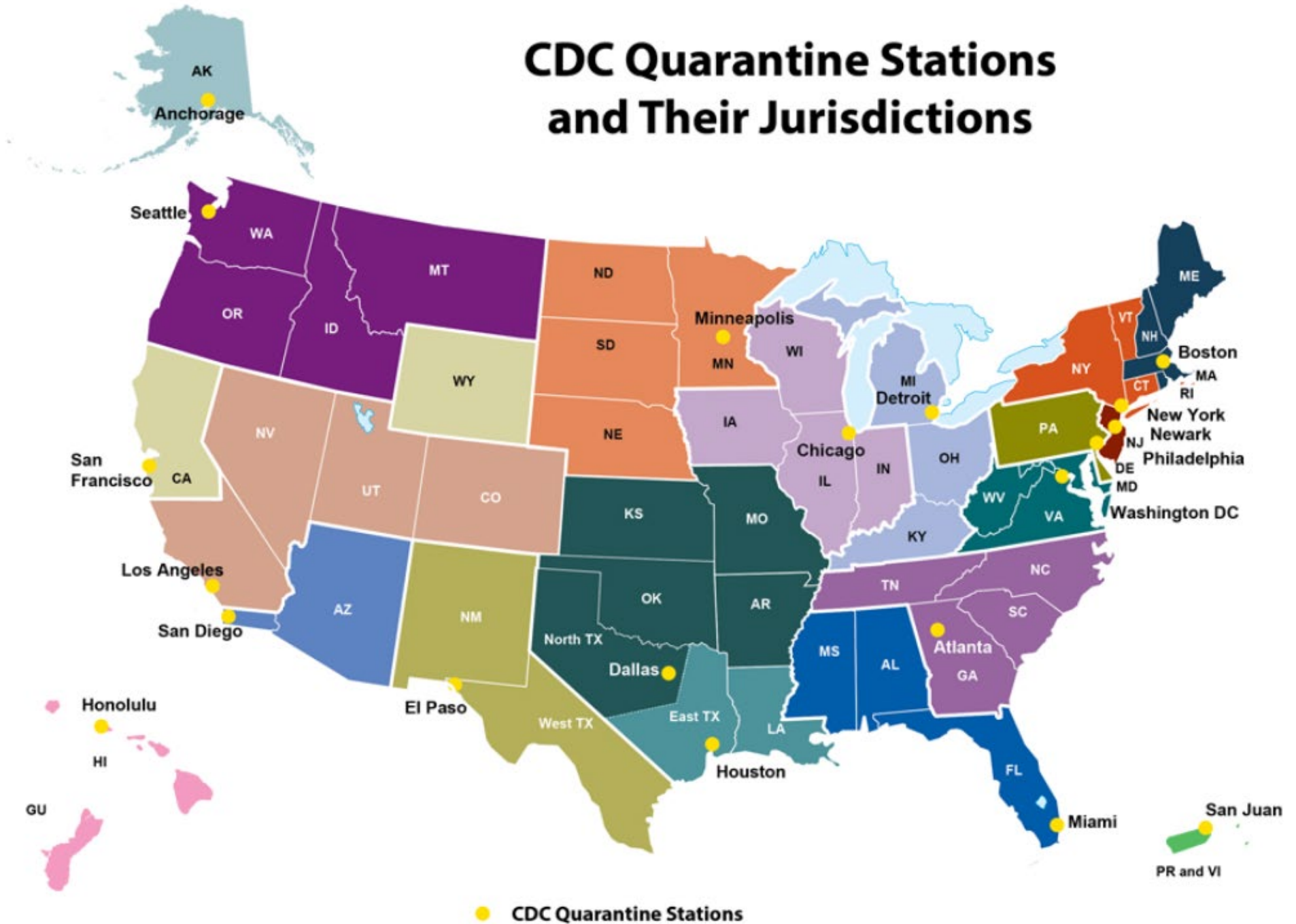
CDC | Updated: Nov 17 2020 12:18PM

View:	Time period:	Metric:
<input checked="" type="radio"/> Cases	<input checked="" type="radio"/> Last 7 Days	<input type="radio"/> Count
<input type="radio"/> Deaths	<input type="radio"/> Since Jan 21, 2020	<input checked="" type="radio"/> Rate per 100,000

US COVID-19 Case Rate Reported to the CDC in the Last 7 Days, by State/Territory (cases per 100K)



CDC Quarantine Stations and Their Jurisdictions



CDC Whats New

<https://www.cdc.gov/coronavirus/2019-ncov/whats-new-all.html>

- [Cases & Deaths by County](#) Tuesday, November 17, 2020
- [EARLY RELEASE: Implementation of a Pooled Surveillance Testing Program for Asymptomatic SARS-CoV-2 Infections on a College Campus - Duke University, Durham, North Carolina, August 2-October 11, 2020](#) Tuesday, November 17, 2020
- [Previous Forecasts of Total Deaths](#) Tuesday, November 17, 2020
- [Cases in the U.S.](#) Tuesday, November 17, 2020
- [COVID-19 Science Update released: November 17, 2020](#) Tuesday, November 17, 2020
- [Workplaces and Businesses](#) Tuesday, November 17, 2020
- [Crew Disembarkations through Commercial Travel](#) Tuesday, November 17, 2020
- [Considerations for Events and Gatherings](#) Tuesday, November 17, 2020
- [Staffing Resources](#) Tuesday, November 17, 2020
- [Tribal Communities](#) Tuesday, November 17, 2020
- [Data Visualization](#) Tuesday, November 17, 2020
- [Operational Considerations for Containing COVID-19 in non-US Healthcare Settings](#) Tuesday, November 17, 2020
- [COVID-19 and Animals](#) Tuesday, November 17, 2020
- [Cases & Deaths by County](#) Monday, November 16, 2020
- [Cases in the U.S.](#) Monday, November 16, 2020
- [Screening K-12 Students for Symptoms of COVID-19: Limitations and Considerations](#) Monday, November 16, 2020
- [COVID-19 Critical Infrastructure Sector Response Planning](#) Monday, November 16, 2020



California Takes Action to Combat COVID-19

<https://www.gov.ca.gov/california-takes-action-to-combat-covid-19/>

State Data

<https://covid19.ca.gov/>
<https://update.covid19.ca.gov/#top>
<https://www.cdph.ca.gov/Programs/CID/DCDC/Pages/Immunization/ncov2019.aspx#>

“Safer Economy Blueprint”

<https://covid19.ca.gov/safer-economy>

Blueprint for a Safer Economy – COVID-19 and Equity

<https://www.cdph.ca.gov/Programs/CID/DCDC/Pages/COVID-19/CaliforniaHealthEquityMetric.aspx>
<https://covid19.healthylivesindex.org/>
<https://map.healthylivesindex.org/>

Statewide industry guidance to reduce risk

<https://covid19.ca.gov/industry-guidance/#top>
<https://www.cdph.ca.gov/Programs/CID/DCDC/Pages/Guidance.aspx>

Data models

<https://covid19.ca.gov/data-and-tools/>

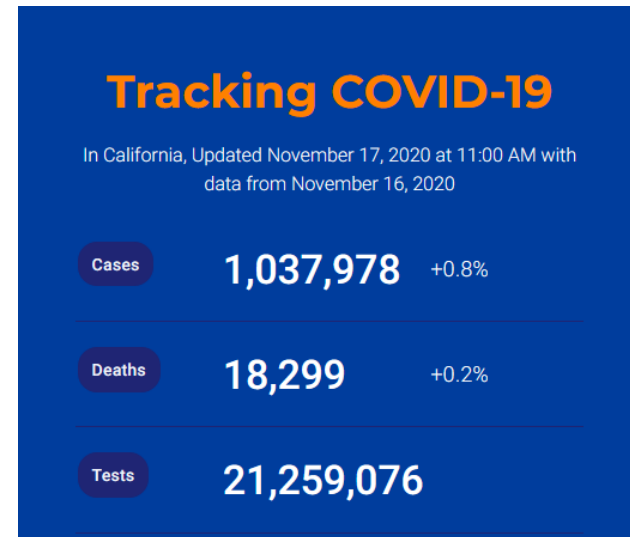
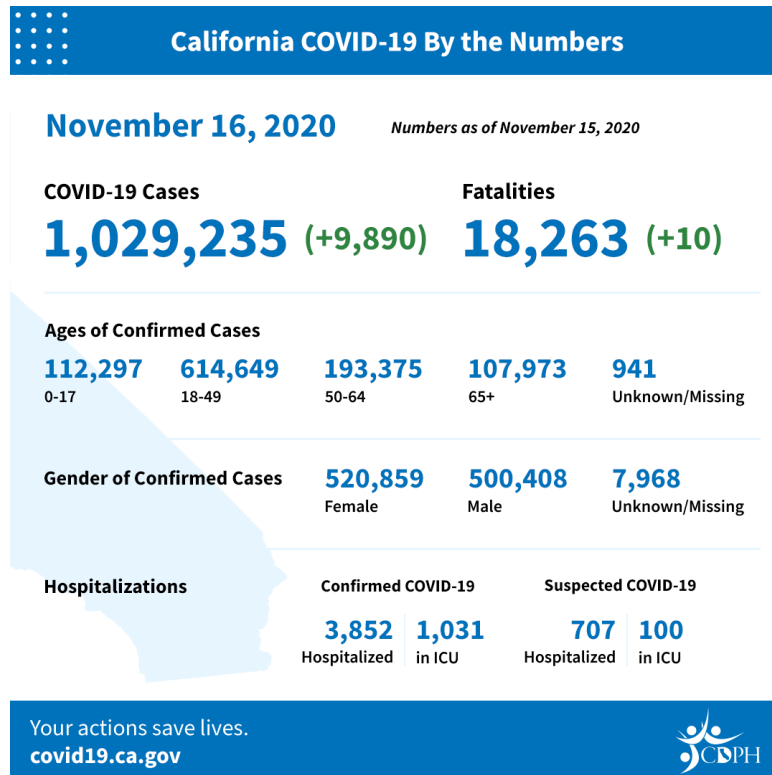


Office of Governor GAVIN NEWSOM

Press Releases, Executive Orders, Media Advisories, Proclamations, and “On the Record” Column

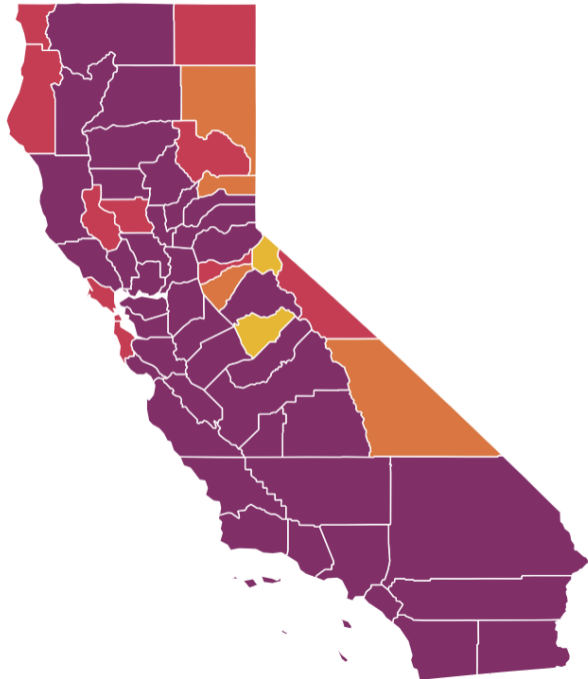
<https://www.gov.ca.gov/newsroom/>

- [Governor Newsom Announces Emergency Allocation of \\$62 Million to Local Governments to Protect People Living in Project Roomkey Hotels](#)
- [Governor Newsom Announces New Immediate Actions to Curb COVID-19 Transmission](#)



Current tier assignments as of November 16, 2020

Tier assignments may occur any day of the week and may occur more than once a week.



Statewide metrics

16.5 New COVID-19 positive cases per day per 100K

5.2% Positivity rate

Find a county

Click on the map for updated metrics

- Widespread
- Substantial
- Moderate
- Minimal

County risk level	Adjusted case rate* 7-day average of daily COVID-19 cases per 100K with 7-day lag, adjusted for number of tests performed	Positivity rate** 7-day average of all COVID-19 tests performed that are positive	
		Entire county	Healthy equity quartile
WIDESPREAD Many non-essential indoor business operations are closed	More than 7.0 Daily new cases (per 100k)	More than 8.0% Positive tests	
SUBSTANTIAL Some non-essential indoor business operations are closed	4.0 – 7.0 Daily new cases (per 100k)	5.0 – 8.0% Positive tests	5.3 – 8.0% Positive tests
MODERATE Some indoor business operations are open with modifications	1.0 – 3.9 Daily new cases (per 100k)	2.0 – 4.9% Positive tests	2.2 – 5.2% Positive tests
MINIMAL Most indoor business operations are open with modifications	Less than 1.0 Daily new cases (per 100k)	Less than 2.0% Positive tests	Less than 2.2% Positive tests

*Small counties (those with a population less than 106,000) may be subject to alternate case assessment measures for purposes of tier assignment.

**Health equity metric is not applied for small counties. The health equity metric is used to move to a less restrictive tier.

	Higher Risk → Lower Risk of Community Disease Transmission			
	Widespread Tier 1	Substantial Tier 2	Moderate Tier 3	Minimal Tier 4
Measure*				
Adjusted Case Rate for Tier Assignment** (Rate per 100,000 excluding prison cases, 7 day average with 7 day lag)	>7	4-7	1-3.9	<1
Testing Positivity*** (Excluding prison cases, 7 day average with 7 day lag)	>8%	5-8%	2.4.9%	<2%

State Officials Announce Latest COVID-19 Facts

November 16, 2020 - The California Department of Public Health (CDPH) today announced the most recent statistics on COVID-19.

State Officials Announce Latest COVID-19 Facts

November 15, 2020 - The California Department of Public Health (CDPH) today announced the most recent statistics on COVID-19.

State Officials Announce Latest COVID-19 Facts

November 14, 2020 - The California Department of Public Health (CDPH) today announced the most recent statistics on COVID-19.

State Officials Announce Latest COVID-19 Facts

November 13, 2020 - The California Department of Public Health (CDPH) today announced the most recent statistics on COVID-19.

State Officials Announce Latest COVID-19 Facts

November 12, 2020 - The California Department of Public Health (CDPH) today announced the most recent statistics on COVID-19.

State Officials Announce Latest COVID-19 Facts

November 11, 2020 - The California Department of Public Health (CDPH) today announced the most recent statistics on COVID-19.



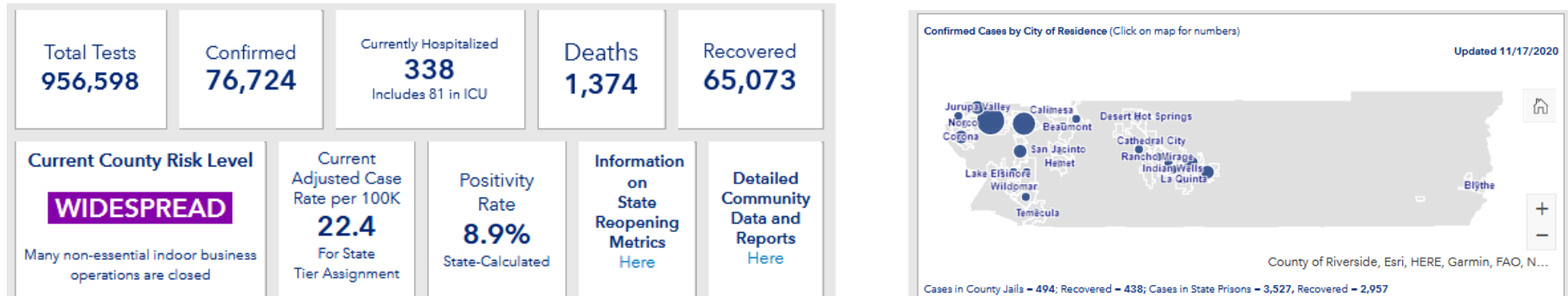
Riverside County Data

<https://www.rivcoph.org/coronavirus>

RUHS Public Health News:

- [Riverside University Health System Receives \\$625,000 Grant to Expand Access to Primary Care](#) - November 10, 2020
- [CNUSD TK-6 Waiver Approved by County & State](#) - November 3, 2020
- Riverside County health officials offer alternatives to traditional Halloween celebrations [English](#) / [Spanish](#) - October 29, 2020
- Riverside County officials: It's up to all of us to return to red. Get tested [English](#) / [Spanish](#) - October 23, 2020
- State announces Riverside County moved back to purple tier, businesses to adjust within 72 hours [English](#) / [Spanish](#) - October 20, 2020
- Three free flu-shot clinics planned throughout Riverside County starting Friday [English](#) / [Spanish](#) - October 15, 2020

Dashboard -Click [here](#) for more detailed city/community data and reports




Daily Epidemiology Summary updated 11-17-2020

https://www.rivcoph.org/Portals/0/Documents/CoronaVirus/November/Dashboard/3/11.17.20%20External%20Daily_COVID-19_Updates.pdf?ver=2020-11-17-131254-900×tamp=1605647599821

Weekly Reports

- Board of Supervisor Summary - District 1 (Jeffries) [here](#)
 - Board of Supervisor Summary - District 2 (Spiegel) [here](#)
 - Board of Supervisor Summary - District 3 (Washington) [here](#)
 - Board of Supervisor Summary - District 4 (Perez) [here](#)
 - Board of Supervisor Summary - District 5 (Hewitt) [here](#)
- (Updated 11/16/2020)

Weather

 National Weather Service San Diego, California		<h2>Weather Threats Outlook</h2> 10:00 AM PST Wednesday, November 18, 2020						
County	Zone	Wed 11/18	Thu 11/19	Fri 11/20	Sat 11/21	Sun 11/22	Mon 11/23	Tue 11/24
San Diego	Beach/Marine	None	Patchy Fog	None	None	None	None	None
	Coast	None	Patchy Fog	None	None	None	None	None
	Valleys	None	None	None	None	None	None	None
	Mountains	None	None	None	None	Fire Weather	Fire Weather	Fire Weather
	Deserts	Warm	None	None	None	None	None	None
Orange	Beach	None	Patchy Fog	None	None	None	None	None
	Coast	None	Patchy Fog	None	None	None	None	None
	Inland	None	None	None	None	None	None	None
	Mountains	None	None	None	None	None	None	None
Riverside	Inland Empire	None	None	None	None	None	None	None
	Mountains	None	None	None	None	Fire Weather	Fire Weather	Fire Weather
	Desert	Warm	None	None	None	None	None	None
San Bernardino	Inland Empire	None	None	None	None	None	None	None
	Mountains	Breezy	None	None	None	Fire Weather	Fire Weather	Fire Weather
	Desert	Breezy	None	None	None	None	None	None

Impact Threat Levels None Low Medium High Extreme

Latest hazard threat table: <https://www.wrh.noaa.gov/sgx/event/dsstable.php>

<https://www.weather.gov/forecastpoints#>

Hazards Outlook - Nov 20-24

