



Daily Situation Summary

Friday, November 13, 2020

As of 10:00 AM

COVID-19 by the Numbers

11/13/2020	Riverside	Imperial	Kern	Los Angeles*	Orange	San Bernardino	San Diego	San Luis Obispo	Santa Barbara	Ventura	California	United States	Global
Total Cases	72,953	13,623	35,014	324,567	62,929	70,374	61,746	4,832	10,278	15,801	991,609	10,508,864	52,487,476
New Cases	637	53	156	1,998	332	708	661	52	26	176	6,927	194,610	628,136
Total Cases Per Capita	3,061	7,559	3,965	3,214	1,989	3,296	1,869	1,717	2,316	1,863	2,533	3,179	682
New Cases Per Capita	26.73	29.41	17.67	19.79	10.49	33.16	20.01	18.48	5.86	20.75	17.69	58.88	8.16
Recovered	64,200	12,827	17,735	Not Reported	55,777	66,374	54,980	4,357	10,036	14,479	506,832	6,732,834	37,388,719
Total Deaths	1,352	341	429	7,216	1,514	1,096	915	33	131	171	18,108	242,216	1,290,653
New Deaths	0	0	0	16	2	0	0	0	0	0	38	1,147	9,623
Deaths Per Capita	56.73	189.22	48.58	71.46	47.85	51.32	27.70	11.72	29.52	20.16	46.25	73.28	16.77
Presumptive active cases	7,401	455	16,850		5,638	2,904	5,851	442	111	1,151	466,669	3,533,814	13,808,104
% of State's Cases	7.36%	1.37%	3.53%	32.73%	6.35%	7.10%	6.23%	0.49%	1.04%	1.59%	9.44%	20.02%	
Currently in Hospitals	323	53	68	1,265	294	352	344	7	12	43	4,002		
Total Hospital Beds	3,439	266	1,276	20,217	5,921	4,067	6,946	460	688	1,236	68,980		
Currently in ICU	67	17	16	266	89	84	94	3	2	12	913		
ICU Beds Available	65	2	51	648	192	107	252	28	57	43	2,123		
Case Fatality Rate	1.853%	2.503%	1.225%	2.223%	2.406%	1.557%	1.482%	0.683%	1.275%	1.082%	1.826%	2.305%	2.459%
Population*	2,383,286	180,216	883,053	10,098,052	3,164,182	2,135,413	3,302,833	281,455	443,738	848,112	39,148,760	330,544,225	7,695,773,000
% of Population	6.09%	0.46%	2.26%	25.79%	8.08%	5.45%	8.44%	0.72%	1.13%	2.17%	0.30%	0.1366%	

Sources: CDPH, WHO, CDC

The date for which case statistics and hospital data were reported. Hospital COVID data are self-reported through a portal managed by the California Hospital Association and pulled at 2pm. COVID case statistics are reported by local health departments to CalREDIE and are pulled at 2pm. Hospital data and case statistics are integrated by the California Department of Technology and made available through the Open Data Portal the following morning. CA Open Data Portal is at least 24 Hours behind although a backlog of new case reports at the State level has ostensibly been cleared, some County dashboards still contain notes that indicate data are missing. *California-Demographics.com made by Cubit - a demographic data provider & census.gov

Presumptive active cases - A calculation (Total Cases - Recovered - Dead) (* LA County does not report recovery rates)

News

More detail on page 2

US Data

More detail on page 3

State Data

More detail on page 5

Riverside County Data

More detail on page 8

Weather

More detail on page 9

News – The collection of news articles is related to COVID-19. The inclusion or order of articles is not intended to reflect their importance, nor is it intended to endorse the political viewpoints or affiliations included in news coverage.

More than 130 Secret Service officers are said to be infected with coronavirus or quarantining in wake of Trump's campaign travel

- The spread of the coronavirus — which has sidelined roughly 10 percent of the agency's core security team — is believed to be partly linked to a series of campaign rallies that President Trump held in the weeks before the Nov. 3 election, according to the people, who, like others interviewed for this report, spoke on the condition of anonymity to describe the situation.

https://www.washingtonpost.com/politics/secret-service-coronavirus-outbreak/2020/11/13/610eebcc-2539-11eb-8672-c281c7a2c96e_story.html

https://www.washingtonpost.com/politics/secret-service-copes-with-coronavirus-cases-in-aftermath-of-trump-appearances/2020/08/28/fa0e7b6e-e22a-11ea-8dd2-d07812bf00f7_story.html

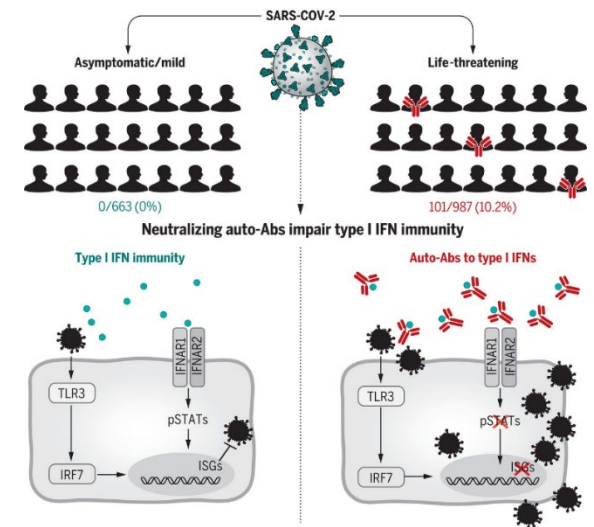
<https://khn.org/morning-breakout/dozens-of-secret-service-agents-get-covid-during-trumps-travels/>

'Breakthrough finding' reveals why certain Covid-19 patients die

- In an international study in Science, 10 percent of nearly 1,000 Covid-19 patients who developed life-threatening pneumonia had antibodies that disable key immune system proteins called interferons. These antibodies — known as autoantibodies, because they attack the body itself — weren't found at all in 663 people with mild or asymptomatic Covid-19 infections. Only four of 1,227 healthy patients had the autoantibodies. The study was led by the Covid Human Genetic Effort, which includes 200 research centers in 40 countries.

<https://www.nbcnews.com/health/health-news/breakthrough-finding-reveals-why-certain-covid-19-patients-die-n1247576>

The Study: <https://science.sciencemag.org/content/370/6515/eabd4585>



California, Oregon & Washington Issue Travel Advisories 14-Day CA Quarantine

- CALIFORNIA — Gov. Gavin Newsom and state public health officials issued a travel advisory Friday morning, asking anyone arriving in the Golden State after recreational travel to self-quarantine for 14 days. This comes after California just reported a "sobering threshold" of 1 million coronavirus cases.
- This advisory includes Californians returning home after traveling outside of their home state and visitors from elsewhere who are arriving in California. Travelers are asked to interact only with their immediate household.
- The advisory does not apply to those who are traveling for work, school, medical care, health, safety and security, and economic services and supply chains, state officials said in the advisory.

https://patch.com/california/lakeelsinore-wildomar/s/hb9pc/14-day-ca-quarantine-called-for-travelers-residents?utm_source=alert-breakingnews&utm_medium=email&utm_campaign=alert

<https://www.gov.ca.gov/2020/11/13/california-oregon-washington-issue-travel-advisories/>



U.S. Data

https://covid.cdc.gov/covid-data-tracker/#cases_casesper100klast7days

United States COVID-19 Cases and Deaths by State

Reported to the CDC since January 21, 2020

TOTAL CASES
10,314,254
+143,408 New Cases

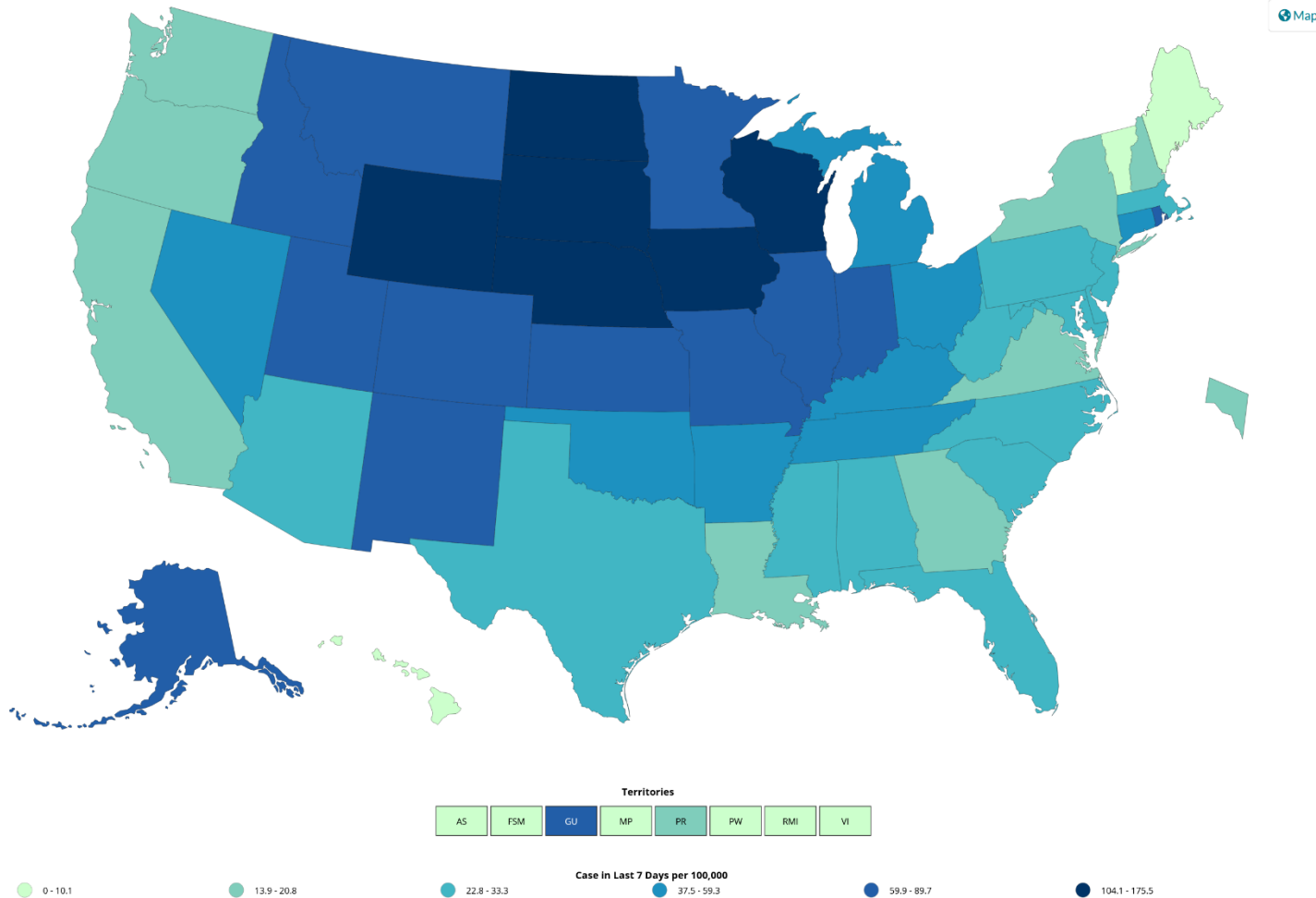
CASES IN LAST 7 DAYS PER 100K
38.2

TOTAL DEATHS
241,069
+1,479 New Deaths

CDC | Updated: Nov 12, 2020 12:16PM

- View:**
 Cases
 Deaths
- Time period:**
 Last 7 Days
 Since Jan 21, 2020
- Metric:**
 Count
 Rate per 100,000

US COVID-19 Case Rate Reported to the CDC in the Last 7 Days, by State/Territory (cases per 100K)



Download Map

CDC Whats New

<https://www.cdc.gov/coronavirus/2019-ncov/whats-new-all.html>

- [Frequently Asked Questions about COVID-19 Vaccination](#) Friday, November 13, 2020
- [Long-Term Effects of COVID-19](#) Friday, November 13, 2020
- [Multistate Assessment of SARS-CoV-2 Seroprevalence in Blood Donors](#) Friday, November 13, 2020
- [Previous COVID-19 Forecasts: Hospitalizations](#) Friday, November 13, 2020
- [COVID-19 Forecasts: Hospitalizations](#) Friday, November 13, 2020
- [Guidance for Pharmacies](#) Friday, November 13, 2020
- [Schools and Childcare Programs](#) Friday, November 13, 2020
- [Colleges, Universities, and Higher Learning](#) Friday, November 13, 2020
- [Community, Work, and School](#) Friday, November 13, 2020
- [Cases & Deaths by County](#) Thursday, November 12, 2020
- [Erratum: Vol 69, No 43](#) Thursday, November 12, 2020
- [Multiple COVID-19 Outbreaks Linked to a Wedding Reception in Rural Maine - August 7-September 14, 2020](#) Thursday, November 12, 2020
- [Risk Assessment and Management of COVID-19 Among Travelers Arriving at Designated U.S. Airports, January 17-September 13, 2020](#) Thursday, November 12, 2020
- [COVID-19 Outbreak in an Amish Community - Ohio, May 2020](#) Thursday, November 12, 2020
- [CDC Science Agenda for COVID-19](#) Thursday, November 12, 2020
- [Investigating the Impact of COVID-19 during Pregnancy](#) Thursday, November 12, 2020
- [What Nail Salon Employees Need to Know about COVID-19](#) Thursday, November 12, 2020
- [What Construction Workers Need to Know about COVID-19](#) Thursday, November 12, 2020
- [What Long-haul Truck Drivers Need to Know about COVID-19](#) Thursday, November 12, 2020
- [What School Nutrition Professionals and Volunteers at Schools Need to Know about COVID-19](#) Thursday, November 12, 2020
- [Meat and Poultry Processing Workers and Employers](#) Thursday, November 12, 2020
- [COVID-19 Employer Information for Rail Transit Operators](#) Thursday, November 12, 2020
- [Cases & Deaths by County](#) Wednesday, November 11, 2020
- [Cases in the U.S.](#) Wednesday, November 11, 2020
- [Holiday Celebrations](#) Wednesday, November 11, 2020
- [Crew Disembarkations through Commercial Travel](#) Wednesday, November 11, 2020
- [Scientific Brief: Community Use of Cloth Masks to Control the Spread of SARS-CoV-2](#) Tuesday, November 10, 2020
- [Celebrating Thanksgiving](#) Tuesday, November 10, 2020
- [Late Sequelae of COVID-19](#) Tuesday, November 10, 2020
- [COVID-19 Science Update released: November 10, 2020](#) Tuesday, November 10, 2020
- [Long-Term Effects of COVID-19](#) Tuesday, November 10, 2020

California Takes Action to Combat COVID-19

<https://www.gov.ca.gov/california-takes-action-to-combat-covid-19/>



State Data

<https://covid19.ca.gov/>
<https://update.covid19.ca.gov/#top>
<https://www.cdph.ca.gov/Programs/CID/DCDC/Pages/Immunization/ncov2019.aspx#>

“Safer Economy Blueprint”

<https://covid19.ca.gov/safer-economy>

Blueprint for a Safer Economy – COVID-19 and Equity

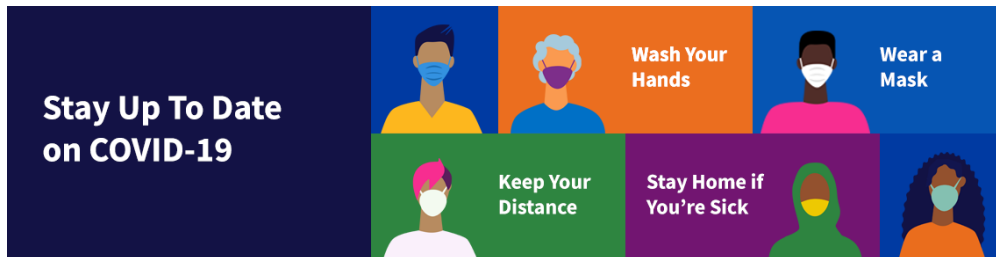
<https://www.cdph.ca.gov/Programs/CID/DCDC/Pages/COVID-19/CaliforniaHealthEquityMetric.aspx>
<https://covid19.healthylivesindex.org/>
<https://map.healthylivesindex.org/>

Statewide industry guidance to reduce risk

<https://covid19.ca.gov/industry-guidance/#top>
<https://www.cdph.ca.gov/Programs/CID/DCDC/Pages/Guidance.aspx>

Data models

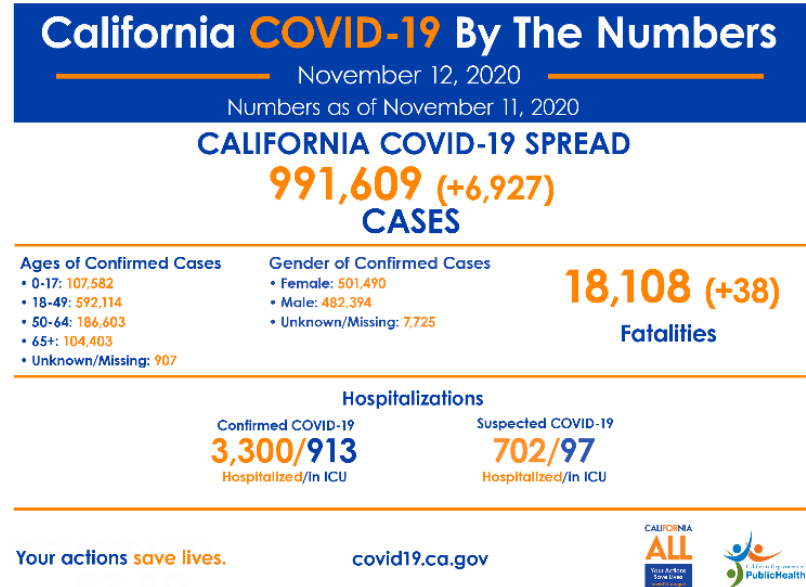
<https://covid19.ca.gov/data-and-tools/>



Office of Governor GAVIN NEWSOM

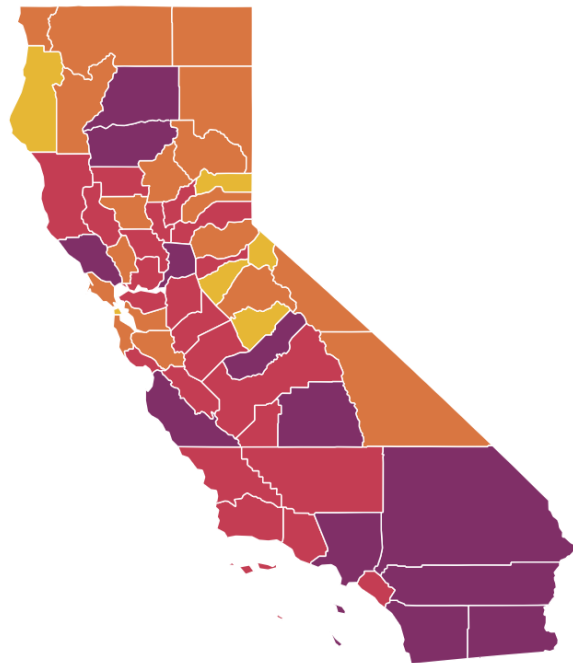
Press Releases, Executive Orders, Media Advisories, Proclamations, and “On the Record” Column

<https://www.gov.ca.gov/newsroom/>



Current tier assignments as of November 10, 2020

All data and tier assignments are updated weekly every Tuesday.



Statewide metrics

8.4 New COVID-19 positive cases per day per 100K

3.4% Positivity rate

Find a county

Highlight County

Click on the map for updated metrics

- Widespread
- Substantial
- Moderate
- Minimal

	Higher Risk \longrightarrow Lower Risk of Community Disease Transmission			
	Widespread Tier 1	Substantial Tier 2	Moderate Tier 3	Minimal Tier 4
Measure*				
Adjusted Case Rate for Tier Assignment** (Rate per 100,000 excluding prison cases, 7 day average with 7 day lag)	>7	4-7	1-3.9	<1
Testing Positivity*** (Excluding prison cases, 7 day average with 7 day lag)	>8%	5-8%	2.4-9%	<2%

State Officials Announce Latest COVID-19 Facts

November 12, 2020 - The California Department of Public Health (CDPH) today announced the most recent statistics on COVID-19.

State Officials Announce Latest COVID-19 Facts

November 11, 2020 - The California Department of Public Health (CDPH) today announced the most recent statistics on COVID-19.

State Officials Announce Latest COVID-19 Facts

November 10, 2020 - The California Department of Public Health (CDPH) today announced the most recent statistics on COVID-19.

State Officials Announce Latest COVID-19 Facts

November 9, 2020 - The California Department of Public Health (CDPH) today announced the most recent statistics on COVID-19.

State Officials Announce Latest COVID-19 Facts

November 8, 2020 - The California Department of Public Health (CDPH) today announced the most recent statistics on COVID-19.

State Officials Announce Latest COVID-19 Facts

November 7, 2020 - The California Department of Public Health (CDPH) today announced the most recent statistics on COVID-19.



Riverside County Data

<https://www.rivcoph.org/coronavirus>

RUHS Public Health News:

- [MSJC Teams with County Public Health to Provide Free COVID-19 Testing](#) - November 12, 2020
- [Riverside University Health System Receives \\$625,000 Grant to Expand Access to Primary Care](#) - November 10, 2020
- [CNUSD TK-6 Waiver Approved by County & State](#) - November 3, 2020
- Riverside County health officials offer alternatives to traditional Halloween celebrations [English](#) / [Spanish](#) - October 29, 2020
- Riverside County officials: It's up to all of us to return to red. Get tested [English](#) / [Spanish](#) - October 23, 2020
- State announces Riverside County moved back to purple tier, businesses to adjust within 72 hours [English](#) / [Spanish](#) - October 20, 2020
- Three free flu-shot clinics planned throughout Riverside County starting Friday [English](#) / [Spanish](#) - October 15, 2020

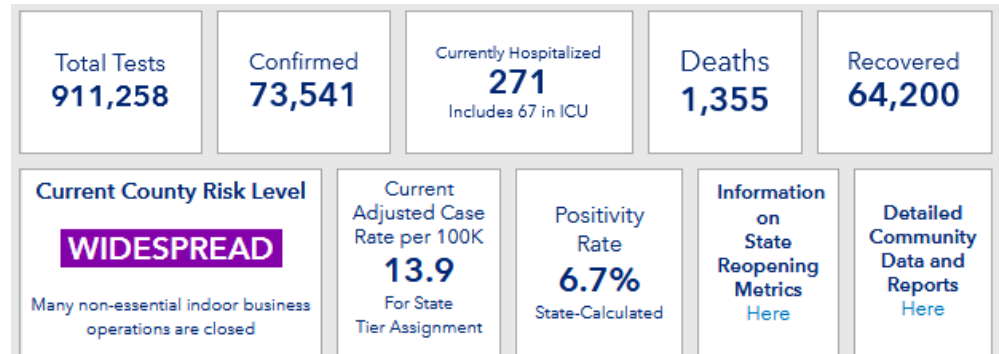
Dashboard -Click [here](#) for more detailed city/community data and reports

Daily Epidemiology Summary updated 11-12-2020


https://rivcoph.org/Portals/0/Documents/CoronaVirus/November/Dashboard/3/Public%20Daily_COVID-19_Updates%20-%202020-11-12.pdf?ver=2020-11-12-145604-913×tamp=1605221902114

Riverside County School Waiver Status

<https://www.rivcoph.org/SchoolWaiver>



Weather

 National Weather Service San Diego, California		Weather Threats Outlook 11 AM PST Thursday, November 12, 2020						
County	Zone	Thu 11/12	Fri 11/13	Sat 11/14	Sun 11/15	Mon 11/16	Tue 11/17	Wed 11/18
San Diego	Beach/Marine	None	Patchy Fog	None	None	Warm	Warm	None
	Coast	None	None	None	None	Warm	Warm	None
	Valleys	None	None	None	None	Warm	Warm	Warm
	Mountains	None	Breezy Onshore	Breezy Onshore	Fire Weather	Fire Weather	Fire Weather	Warm
	Deserts	None	Breezy Onshore	Breezy Onshore	None	Warm	Warm	Warm
Orange	Beach	None	Patchy Fog	None	None	Warm	Warm	None
	Coast	None	Patchy Fog	None	None	Warm	Warm	None
	Inland	None	None	None	None	Warm	Warm	None
	Mountains	None	None	None	Fire Weather	Fire Weather	Fire Weather	None
Riverside	Inland Empire	None	None	None	None	Warm	Warm	Warm
	Mountains	None	Breezy Onshore	Breezy Onshore	Fire Weather	Fire Weather	Fire Weather	None
	Desert	None	Breezy Onshore	Breezy Onshore	None	Warm	Warm	Warm
San Bernardino	Inland Empire	None	None	None	None	Warm	Warm	Warm
	Mountains	None	Breezy Onshore	Breezy Onshore	Fire Weather	Fire Weather	Fire Weather	None
	Desert	None	Breezy Onshore	Breezy Onshore	None	Warm	Warm	Warm

Impact Threat Levels None Low Medium High Extreme

Latest hazard threat table: <https://www.wrh.noaa.gov/sqx/event/dsstable.php>

<https://www.weather.gov/forecastpoints#>