



# Daily Situation Summary

## Tuesday, November 10, 2020

### As of 10:00 AM

#### COVID-19 by the Numbers

11/10/2020	Riverside	Imperial	Kern	Los Angeles*	Orange	San Bernardino	San Diego	San Luis Obispo	Santa Barbara	Ventura	California	United States	Global
Total Cases	71,442	13,428	34,644	318,960	62,034	68,412	60,199	4,698	10,180	15,504	971,851	10,036,463	50,676,072
New Cases	467	85	205	2,295	651	684	544	53	25	151	7,212	122,910	427,551
Total Cases Per Capita	2,998	7,451	3,923	3,159	1,961	3,204	1,823	1,669	2,294	1,828	2,482	3,036	658
New Cases Per Capita	19.59	47.17	23.21	22.73	20.57	32.03	16.47	18.83	5.63	17.80	18.42	37.18	5.56
Recovered	<a href="#">63,478</a>	<a href="#">12,763</a>	<a href="#">17,598</a>	<a href="#">Not Reported</a>	<a href="#">55,063</a>	<a href="#">64,881</a>	<a href="#">54,033</a>	<a href="#">4,287</a>	<a href="#">9,935</a>	<a href="#">15,387</a>	<a href="#">499,503</a>	<a href="#">6,558,815</a>	<a href="#">36,289,187</a>
Total Deaths	1,333	341	429	7,172	1,509	1,096	908	33	131	169	17,977	237,731	1,261,075
New Deaths	0	0	0	2	3	3	0	0	0	0	14	704	6,214
Deaths Per Capita	55.93	189.22	48.58	71.02	47.69	51.32	27.49	11.72	29.52	19.93	45.92	71.92	16.39
Presumptive active cases	6,631	324	16,617		5,462	2,435	5,258	378	114	-52	454,371	3,239,917	13,125,810
% of State's Cases	7.35%	1.38%	3.56%	32.82%	6.38%	7.04%	6.19%	0.48%	1.05%	1.60%	<b>9.68%</b>	<b>19.81%</b>	
Currently in Hospitals	286	50	62	1,152	233	326	342	8	10	48	3,668		
Total Hospital Beds	3,341	250	1,269	20,059	5,875	3,994	6,948	460	688	1,225	68,032		
Currently in ICU	64	15	19	250	76	73	91	3	3	18	839		
ICU Beds Available	67	0	50	769	193	94	265	26	50	40	2,257		
Case Fatality Rate	1.866%	2.539%	1.238%	2.249%	2.433%	1.602%	1.508%	0.702%	1.287%	1.090%	1.850%	2.369%	2.489%
Population*	2,383,286	180,216	883,053	10,098,052	3,164,182	2,135,413	3,302,833	281,455	443,738	848,112	39,148,760	330,544,225	7,695,773,000
% of Population	6.09%	0.46%	2.26%	25.79%	8.08%	5.45%	8.44%	0.72%	1.13%	2.17%	<b>0.29%</b>	<b>0.1304%</b>	

Sources: CDPH, WHO, CDC

The date for which case statistics and hospital data were reported. Hospital COVID data are self-reported through a portal managed by the California Hospital Association and pulled at 2pm. COVID case statistics are reported by local health departments to CaREDIE and are pulled at 2pm. Hospital data and case statistics are integrated by the California Department of Technology and made available through the Open Data Portal the following morning. CA Open Data Portal is at least 24 Hours behind although a backlog of new case reports at the State level has ostensibly been cleared, some County dashboards still contain notes that indicate data are missing. \*California-Demographics.com made by Cubit - a demographic data provider & census.gov

Presumptive active cases - A calculation (Total Cases - Recovered - Dead) (\* LA County does not report recovery rates)

- News** [More detail on page 2](#)
- Global Data** [More detail on page 3](#)
- US Data** [More detail on page 4](#)
- State Data** [More detail on page 8](#)
- Riverside County Data** [More detail on page 11](#)
- Weather** [More detail on page 12](#)

**News** – The collection of news articles is related to COVID-19. The inclusion or order of articles is not intended to reflect their importance, nor is it intended to endorse the political viewpoints or affiliations included in news coverage.

### **Brazil halts trials of Chinese COVID-19 vaccine**

<https://www.aljazeera.com/news/2020/11/10/brazil-halts-trials-of-chinese-covid-19-vaccine>

### **Biden pleads ‘wear a mask’ ahead of ‘very dark winter**

<https://www.aljazeera.com/news/2020/11/9/biden-asks-people-wear-a-mask-to-contain-coronavirus>

### **HHS Secretary: Coronavirus 'general vaccination' programs by spring**

<https://www.nbcnews.com/news/us-news/hhs-secretary-coronavirus-general-vaccination-programs-spring-n1247232>

### **1 in 5 COVID-19 patients develop mental illness within 90 day, study finds**

<https://www.today.com/health/1-5-covid-19-patients-develop-mental-illness-within-90-t198428>

### **One week after Halloween, COVID-19 cases are soaring at Texas A&M**

<https://www.kbtx.com/2020/11/09/one-week-after-halloween-covid-19-cases-are-soaring-at-texas-am/>

### **Michigan reports 50 new school-related COVID-19 outbreaks**

<https://www.freep.com/story/news/education/2020/11/09/michigan-school-covid-outbreaks-coronavirus/6225281002/>

### **Purple to red, and back? How California counties’ COVID risk tiers have changed over time**

<https://www.sacbee.com/news/politics-government/article247084792.html#storylink=cpy>

### **Smidt Heart Institute Launches Clinic to Treat Heart Damage in COVID-19 Survivors**

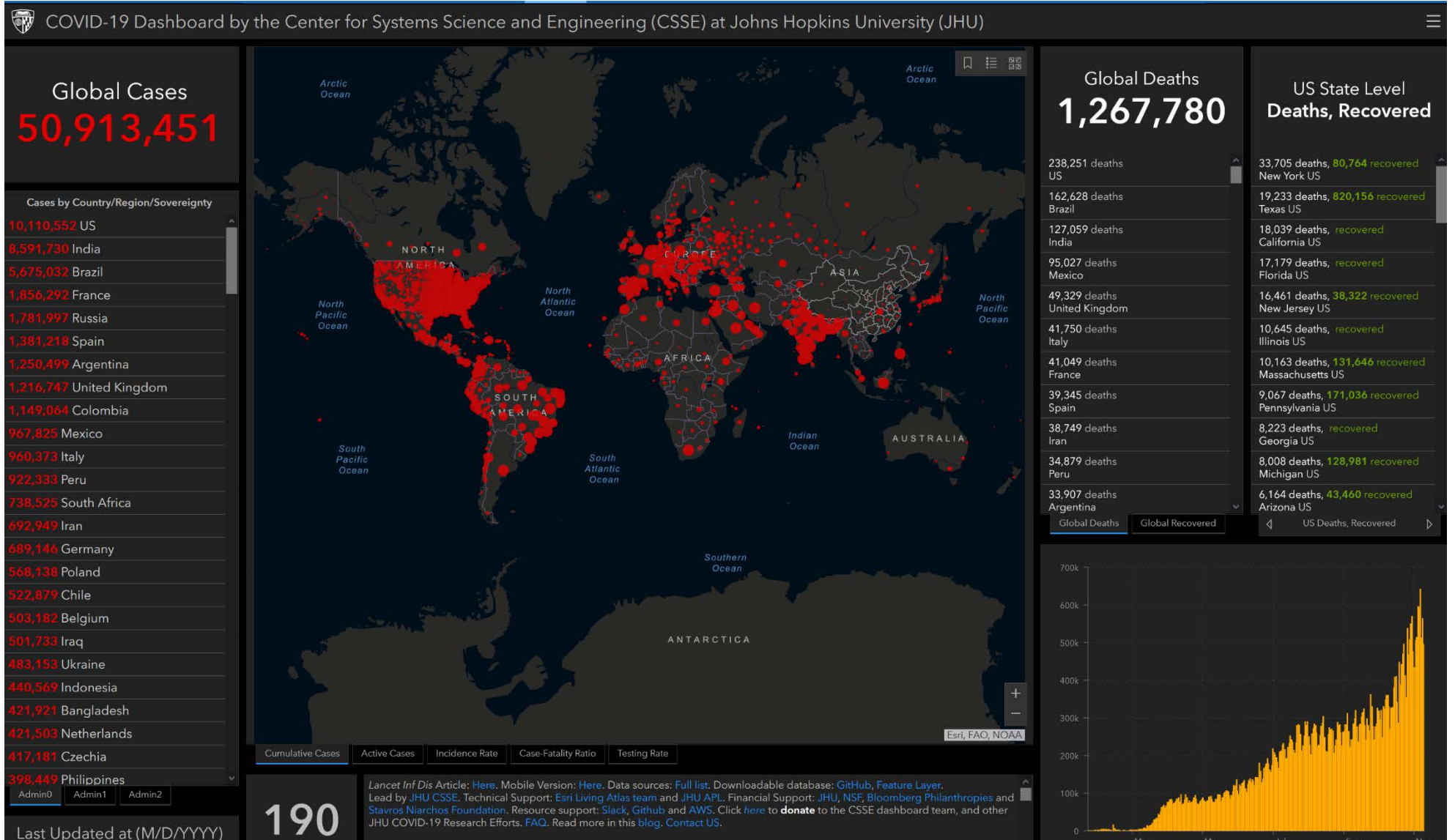
<https://www.cedars-sinai.org/newsroom/smidt-heart-institute-launches-clinic-to-treat-heart-damage-in-covid-19-survivors/>

### **Riverside County coronavirus hospitalizations up 57% from this point last month**

<https://www.pe.com/2020/11/09/riverside-county-coronavirus-hospitalizations-up-57-from-this-point-last-month/>

# Global Data

https://coronavirus.jhu.edu/map.html





# U.S. Data

[https://covid.cdc.gov/covid-data-tracker/#cases\\_casesper100klast7days](https://covid.cdc.gov/covid-data-tracker/#cases_casesper100klast7days)

## United States COVID-19 Cases and Deaths by State

Reported to the CDC since January 21, 2020

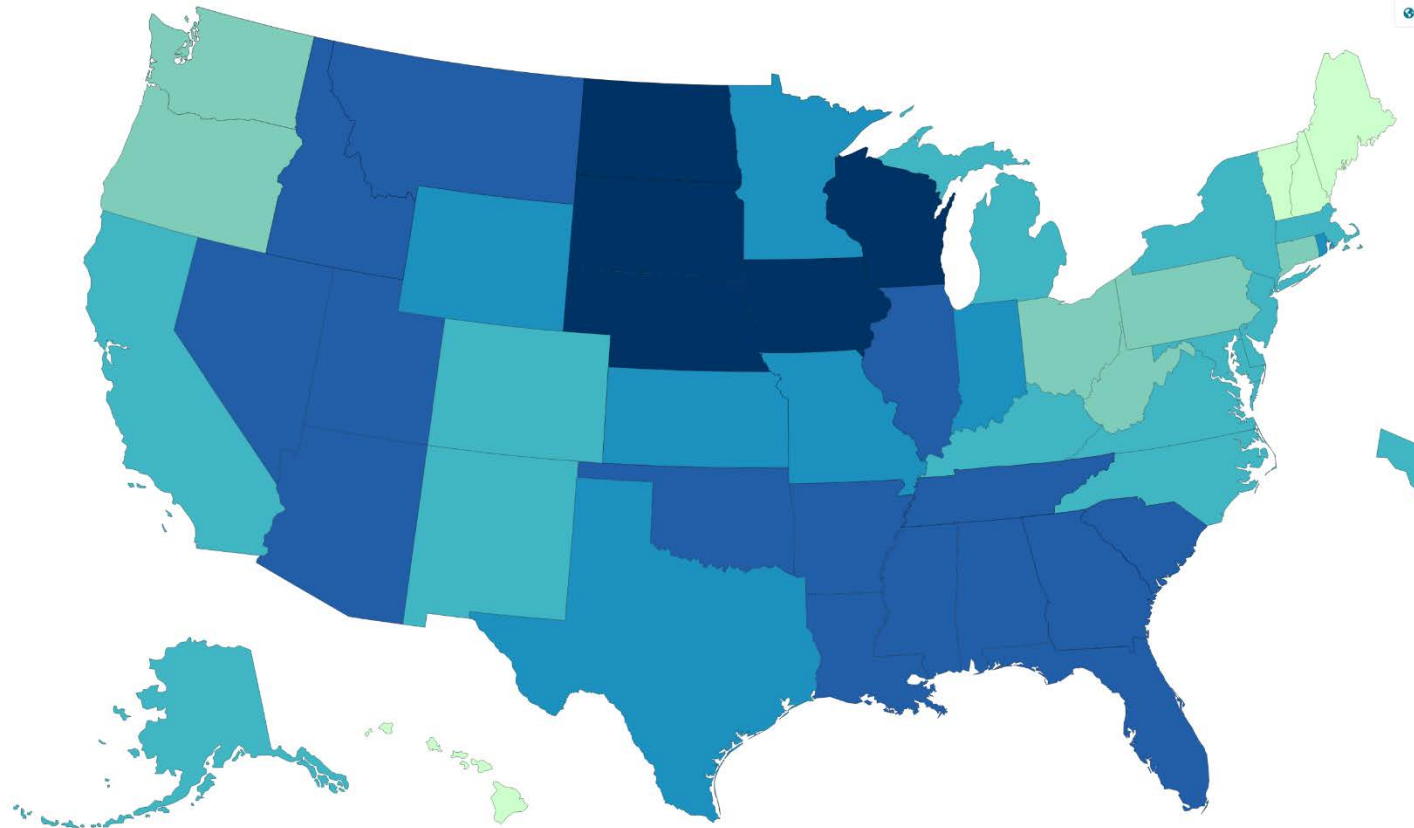
<b>TOTAL CASES</b> <b>9,913,553</b> <small>+105,142 New Cases</small>	<b>CASES PER 100,000 PEOPLE</b> <b>2,996</b>	<b>TOTAL DEATHS</b> <b>237,037</b> <small>+490 New Deaths</small>
---	---	---

CDC | Updated: Nov 9, 2020 1:24PM

- View:**  
 Cases  
 Deaths
- Time period:**  
 Last 7 Days  
 Since Jan 21, 2020
- Metric:**  
 Count  
 Rate per 100,000

COVID-19 Case Rate in the US Reported to the CDC, by State/Territory (cases per 100,000)

Map Chart



### Territories

AS	FSM	GU	MP	PR	PW	RMI	VI
----	-----	----	----	----	----	-----	----



# United States COVID-19 Cases and Deaths by State

Reported to the CDC since January 21, 2020

**View:**  
 Cases  
 Deaths

**Time period:**  
 Last 7 Days  
 Since Jan 21, 2020

**Metric:**  
 Count  
 Rate per 100,000

TOTAL CASES  
**9,913,553**  
 +105,142 New Cases

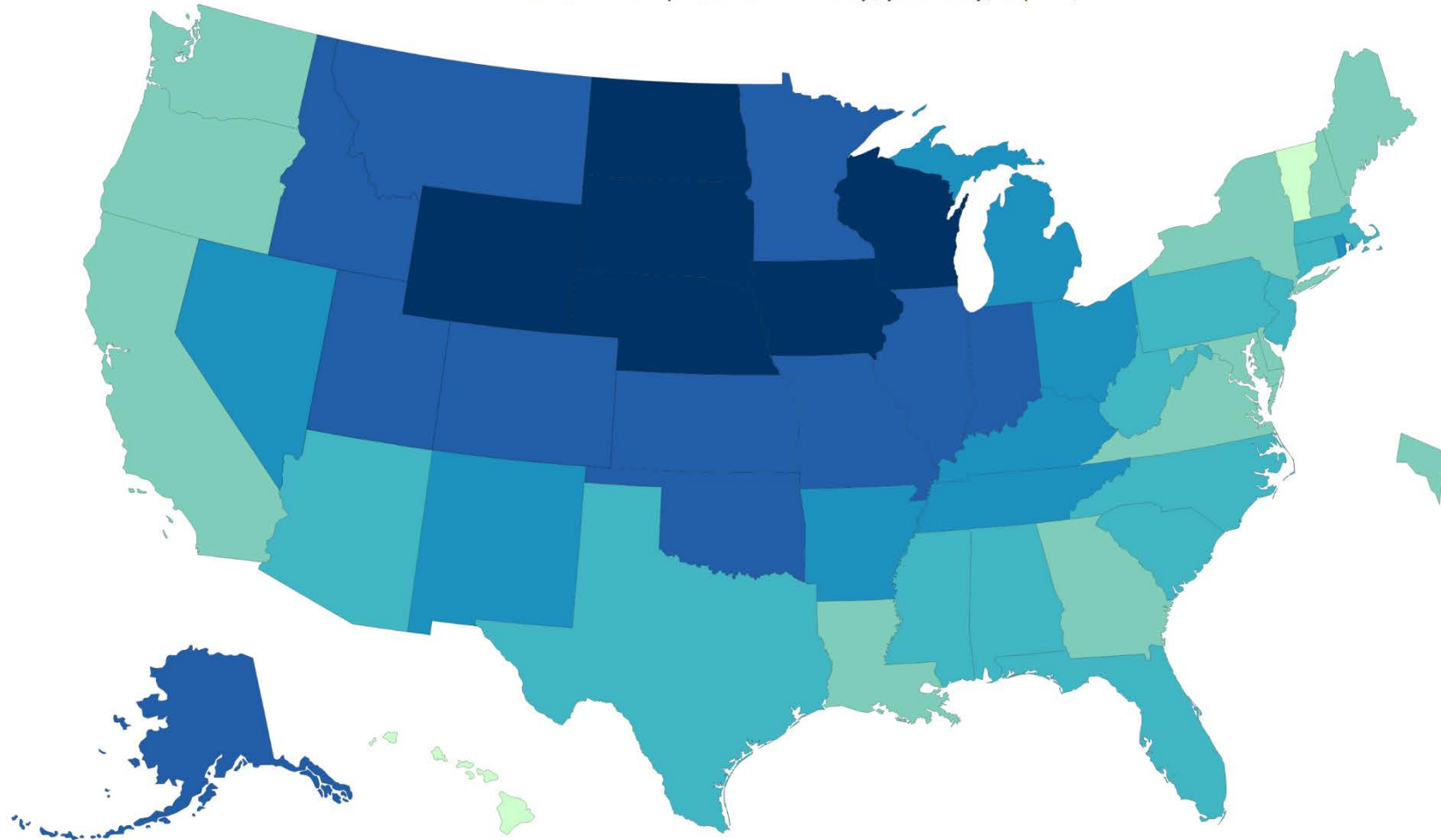
CASES IN LAST 7 DAYS PER 100K  
**33**

TOTAL DEATHS  
**237,037**  
 +490 New Deaths

CDC | Updated: Nov 9 2020 1:24PM

US COVID-19 Case Rate Reported to the CDC in the Last 7 Days, by State/Territory (cases per 100K)

[Map](#)



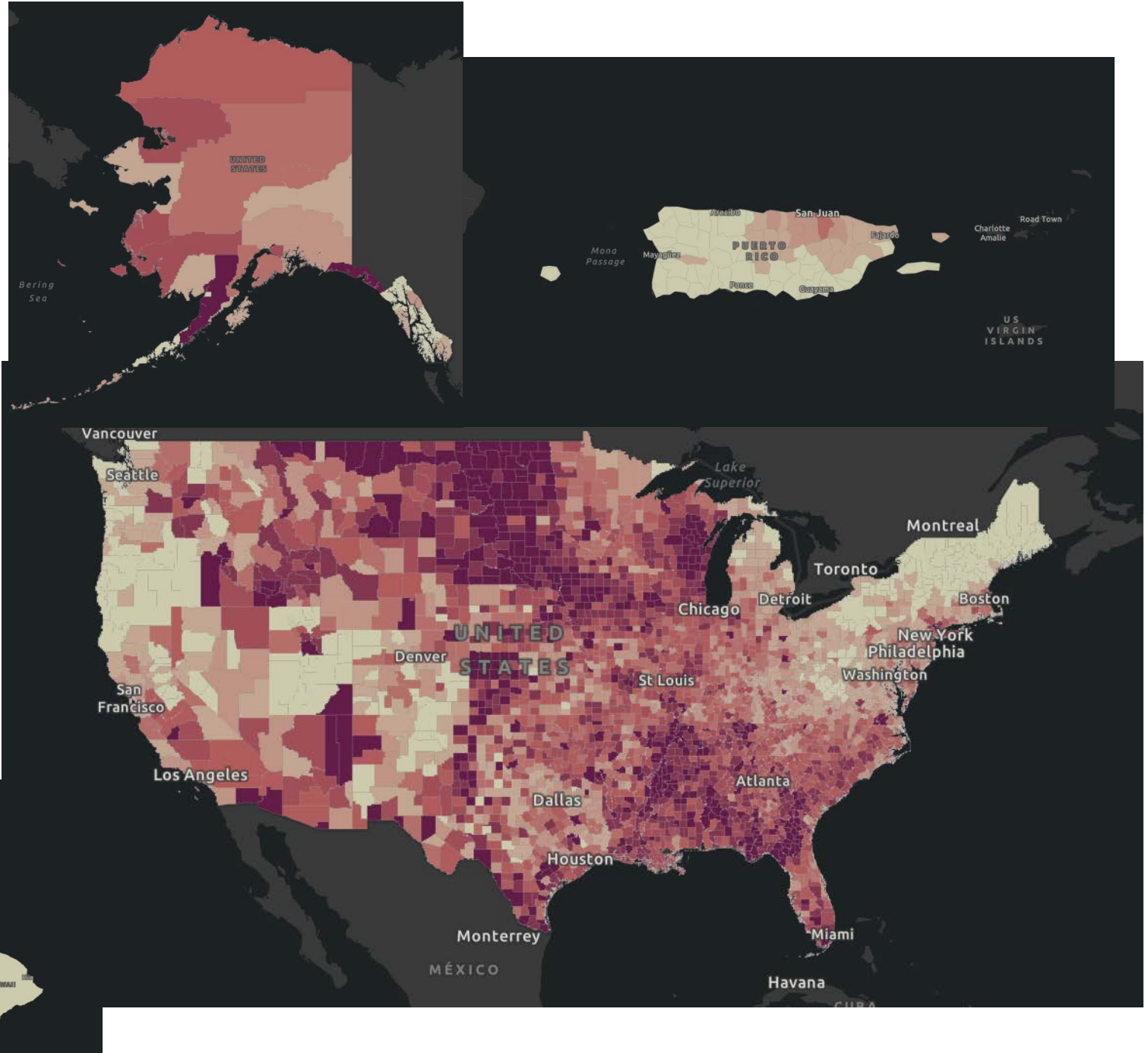
**Territories**

- AS
- FSM
- GU
- MP
- PR
- PW
- RMI
- VI

**Case in Last 7 Days per 100,000**







## CDC Whats New

<https://www.cdc.gov/coronavirus/2019-ncov/whats-new-all.html>

- [Contact Tracing](#) Tuesday, November 10, 2020
- [Staffing Resources](#) Tuesday, November 10, 2020
- [Community and Faith-Based Organizations](#) Tuesday, November 10, 2020
- [Cases & Deaths by County](#) Monday, November 09, 2020
- [Cases in the U.S.](#) Monday, November 09, 2020
- [EARLY RELEASE: Characteristics of Hospitalized COVID-19 Patients Discharged and Experiencing Same-Hospital Readmission - United States, March-August 2020](#) Monday, November 09, 2020
- [Healthcare Facilities That Have Implemented COVID-19 Electronic Case Reporting](#) Monday, November 09, 2020
- [Airport Personnel and COVID-19](#) Monday, November 09, 2020
- [Worker Support](#) Monday, November 09, 2020
- [Workplaces and Businesses](#) Monday, November 09, 2020
- [10 Things Healthcare Professionals Need to Know about U.S. COVID-19 Vaccination Plans](#) Monday, November 09, 2020
- [Vaccines](#) Monday, November 09, 2020
- [How CDC Is Making COVID-19 Vaccine Recommendations](#) Monday, November 09, 2020
- [Holiday Celebrations](#) Monday, November 09, 2020
- [Daily Activities and Going Out](#) Monday, November 09, 2020
- [Resources for Laboratories Working on Coronavirus \(COVID-19\)](#) Monday, November 09, 2020



# California Takes Action to Combat COVID-19

<https://www.gov.ca.gov/california-takes-action-to-combat-covid-19/>

## State Data

<https://covid19.ca.gov/>  
<https://update.covid19.ca.gov/#top>  
<https://www.cdph.ca.gov/Programs/CID/DCDC/Pages/Immunization/ncov2019.aspx#>

## “Safer Economy Blueprint”

<https://covid19.ca.gov/safer-economy>

## Blueprint for a Safer Economy – COVID-19 and Equity

<https://www.cdph.ca.gov/Programs/CID/DCDC/Pages/COVID-19/CaliforniaHealthEquityMetric.aspx>  
<https://covid19.healthylplacesindex.org/>  
<https://map.healthylplacesindex.org/>

## Statewide industry guidance to reduce risk

<https://covid19.ca.gov/industry-guidance/#top>  
<https://www.cdph.ca.gov/Programs/CID/DCDC/Pages/Guidance.aspx>

## Data models

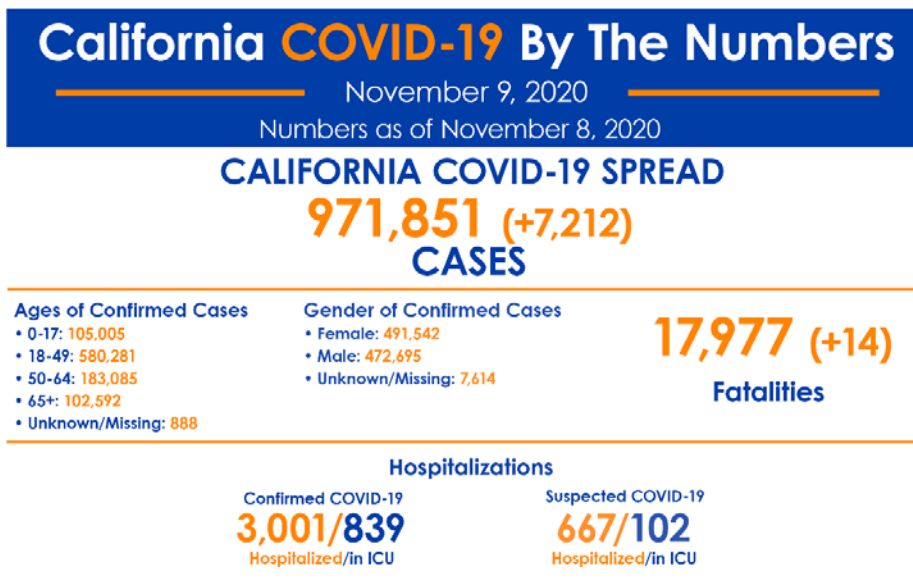
<https://covid19.ca.gov/data-and-tools/>



Office of Governor  
**GAVIN NEWSOM**

Press Releases, Executive Orders, Media Advisories, Proclamations, and “On the Record” Column

<https://www.gov.ca.gov/newsroom/>



Your actions save lives.

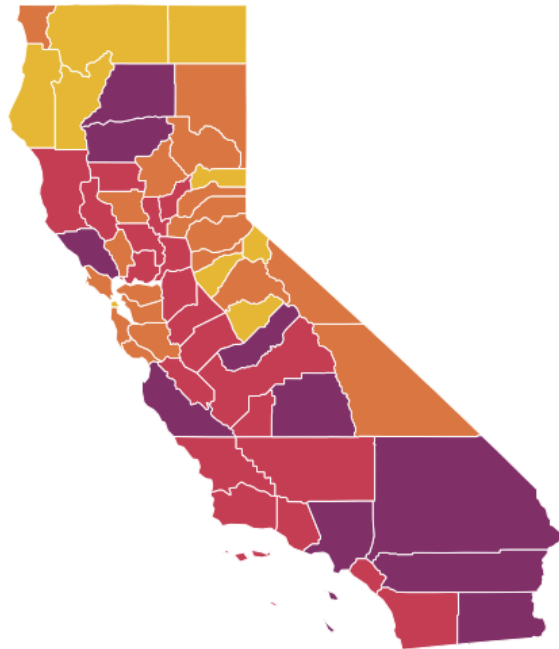
[covid19.ca.gov](https://covid19.ca.gov)





## Current tier assignments as of November 4, 2020

All data and tier assignments are updated weekly every Tuesday (due to Election Day, the Tuesday, November 3 update has been moved to Wednesday, November 4).



Statewide metrics  
7.7 New COVID-19 positive cases per day per 100K

3.3% Positivity rate

Find a county

Click on the map for updated metrics

- Widespread
- Substantial
- Moderate
- Minimal

	Higher Risk → Lower Risk of Community Disease Transmission			
	Widespread Tier 1	Substantial Tier 2	Moderate Tier 3	Minimal Tier 4
Measure*				
Adjusted Case Rate for Tier Assignment** (Rate per 100,000 excluding prison cases, 7 day average with 7 day lag)	>7	4-7	1-3.9	<1
Testing Positivity*** (Excluding prison cases, 7 day average with 7 day lag)	>8%	5-8%	2.4-9%	<2%

**State Officials Announce Latest COVID-19 Facts**

November 9, 2020 - The California Department of Public Health (CDPH) today announced the most recent statistics on COVID-19.

**State Officials Announce Latest COVID-19 Facts**

November 8, 2020 - The California Department of Public Health (CDPH) today announced the most recent statistics on COVID-19.

**State Officials Announce Latest COVID-19 Facts**

November 7, 2020 - The California Department of Public Health (CDPH) today announced the most recent statistics on COVID-19.

**State Officials Announce Latest COVID-19 Facts**

November 6, 2020 - The California Department of Public Health (CDPH) today announced the most recent statistics on COVID-19.

**State Officials Announce Latest COVID-19 Facts**

November 5, 2020 - The California Department of Public Health (CDPH) today announced the most recent statistics on COVID-19.

**Pilot Project Using Google and Apple Exposure Notification Technology Expands to Additional UC Campuses**

**November 5, 2020 - The California Department of Public Health (CDPH) and the California Department of Technology (CDT) today announced an expansion of their partnership with the University of California to test the Exposure Notification Express mobile technology recently released by Google and Apple.**



# Riverside County Data

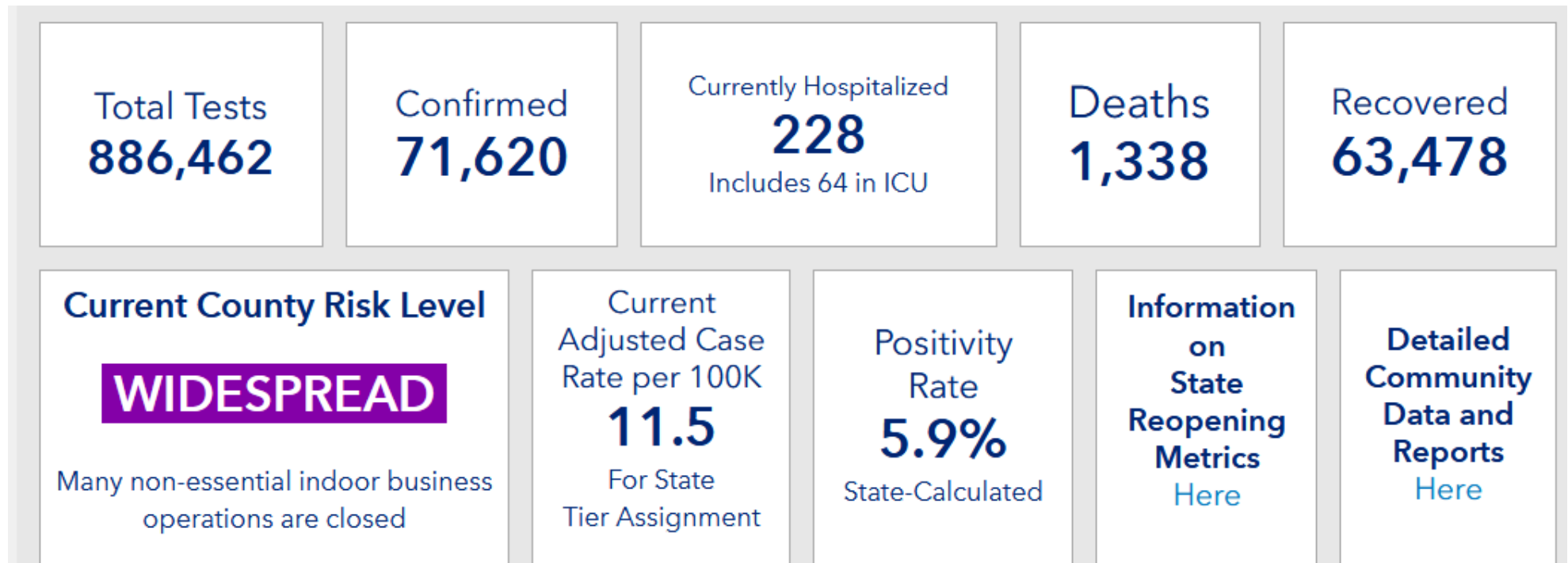
## RUHS Public Health News:

- [CNUSD TK-6 Waiver Approved by County & State](#) - November 3, 2020
- Riverside County health officials offer alternatives to traditional Halloween celebrations [English](#) / [Spanish](#) - October 29, 2020
- Riverside County officials: It's up to all of us to return to red. Get tested [English](#) / [Spanish](#) - October 23, 2020
- State announces Riverside County moved back to purple tier, businesses to adjust within 72 hours [English](#) / [Spanish](#) - October 20, 2020
- Three free flu-shot clinics planned throughout Riverside County starting Friday [English](#) / [Spanish](#) - October 15, 2020


Dashboard -Click [here](#) for more detailed city/community data and reports

## Daily Epidemiology Summary updated 11-09-2020

[https://www.rivcoph.org/Portals/0/Documents/CoronaVirus/November/Dashboard/2/Public%20Daily\\_COVID-19\\_Updates%2011.09.20.pdf?ver=2020-11-09-140852-340&timestamp=1604959747931](https://www.rivcoph.org/Portals/0/Documents/CoronaVirus/November/Dashboard/2/Public%20Daily_COVID-19_Updates%2011.09.20.pdf?ver=2020-11-09-140852-340&timestamp=1604959747931)



# Weather

 National Weather Service San Diego, California		Weather Threats Outlook 11 AM PST Tuesday, November 10, 2020						
County	Zone	Tue 11/10	Wed 11/11	Thu 11/12	Fri 11/13	Sat 11/14	Sun 11/15	Mon 11/16
San Diego	Beach/Marine	None	None	None	Light Showers	None	None	None
	Coast	None	None	None	Light Showers	None	None	None
	Valleys	None	None	None	Light Showers	None	None	None
	Mountains	Cold	None	None	Light Showers	None	None	None
	Deserts	None	None	None	None	None	None	None
Orange	Beach	None	None	None	Light Showers	None	None	None
	Coast	None	None	None	Light Showers	None	None	None
	Inland	None	None	None	Light Showers	None	None	None
	Mountains	Cold	None	None	Light Showers	None	None	None
Riverside	Inland Empire	None	None	None	None	None	None	None
	Mountains	Cold	None	None	Light Showers	None	None	None
	Desert	None	None	None	None	None	None	None
San Bernardino	Inland Empire	None	None	None	None	None	None	None
	Mountains	Cold	None	None	Light Showers	None	None	None
	Desert	None	None	None	None	None	None	None

Impact Threat Levels    None    Low    Medium    High    Extreme

Latest hazard threat table: <https://www.wrh.noaa.gov/sgx/event/dsstable.php>

<https://www.weather.gov/forecastpoints#>