



Daily Situation Summary

Thursday, November 5, 2020

As of 10:00 AM

COVID-19 by the Numbers

11/05/2020	Riverside	Imperial*	Kern	Los Angeles	Orange	San Bernardino	San Diego	San Luis Obispo	Santa Barbara	Ventura	California	United States	Global
Total Cases	69,300	13,044	33,957	308,812	60,283	65,320	57,722	4,371	10,008	14,816	940,010	9,357,245	47,930,397
New Cases	467	40	123	1,192	287	691	293	68	23	49	5,338	88,427	529,256
Total Cases Per Capita	2,908	7,238	3,845	3,058	1,905	3,059	1,748	1,553	2,255	1,747	2,401	2,831	623
New Cases Per Capita	19.59	22.20	13.93	11.80	9.07	32.36	8.87	24.16	5.18	5.78	13.64	26.75	6.88
Recovered	<u>62,009</u>	<u>12,517</u>	<u>17,508</u>	<u>Not Reported</u>	<u>54,170</u>	<u>62,773</u>	<u>52,359</u>	<u>4,159</u>	<u>9,804</u>	<u>14,734</u>	<u>488,182</u>	<u>6,294,630</u>	<u>34,846,415</u>
Total Deaths	1,324	338	425	7,097	1,484	1,079	901	33	129	167	17,752	231,988	1,221,781
New Deaths	2	0	1	21	1	0	10	0	0	0	66	1,095	9,430
Deaths Per Capita	55.55	187.55	48.13	70.28	46.90	50.53	27.28	11.72	29.07	19.69	45.34	70.18	15.88
Presumptive active cases	5,967	189	16,024		4,629	1,468	4,462	179	75	-85	434,076	2,830,627	11,862,201
% of State's Cases	7.37%	1.39%	3.61%	32.85%	6.41%	6.95%	6.14%	0.46%	1.06%	1.58%	10.05%	19.52%	
Currently in Hospitals	267	49	55	1,128	224	315	295	8	15	41	3,410		
Total Hospital Beds	3,405	259	1,340	20,014	5,881	3,952	6,978	460	688	1,238	68,298		
Currently in ICU	56	14	22	238	78	66	88	2	2	15	779		
ICU Beds Available	63	1	52	728	168	96	286	22	57	40	2,274		
Case Fatality Rate	1.911%	2.591%	1.252%	2.298%	2.462%	1.652%	1.561%	0.755%	1.289%	1.127%	1.888%	2.479%	2.549%
Population*	2,383,286	180,216	883,053	10,098,052	3,164,182	2,135,413	3,302,833	281,455	443,738	848,112	39,148,760	330,544,225	7,695,773,000
% of Population	6.09%	0.46%	2.26%	25.79%	8.08%	5.45%	8.44%	0.72%	1.13%	2.17%	0.28%	0.1216%	

Sources: CDPH, WHO, CDC

The date for which case statistics and hospital data were reported. Hospital COVID data are self-reported through a portal managed by the California Hospital Association and pulled at 2pm. COVID case statistics are reported by local health departments to CaIREDIE and are pulled at 2pm. Hospital data and case statistics are integrated by the California Department of Technology and made available through the Open Data Portal the following morning. CA Open Data Portal is at least 24 Hours behind although a backlog of new case reports at the State level has ostensibly been cleared, some County dashboards still contain notes that indicate data are missing. *California-Demographics.com made by Cubit - a demographic data provider & census.gov

Presumptive active cases - A calculation (Total Cases - Recovered - Dead) (LA County does not report recovery rates and *Imperial County case data reporting is delayed to the state data source)

News

More detail on page 2

US Data

More detail on page 3

State Data

More detail on page 10

Riverside County Data

More detail on page 15

Weather

More detail on page 16

News – The collection of news articles is related to COVID-19. The inclusion or order of articles is not intended to reflect their importance, nor is it intended to endorse the political viewpoints or affiliations included in news coverage.

Who Update

- In the past week, over 3.3 million new cases have been reported globally. As of 1 November, nearly 46 million cases and 1.2 million deaths have been reported globally. The further acceleration of the incidence of new cases was most notable in the European Region. A substantial rise in deaths in the region and globally was also documented. In this update, we additionally present a special focus, updating on trends in the age and gender distribution of COVID-19 cases and deaths.
<https://www.who.int/publications/m/item/weekly-epidemiological-update---3-november-2020>

UN to hold summit on COVID-19 in December

<https://apnews.com/article/pandemics-virus-outbreak-germany-europe-restaurants-3bc9724237d0ccf4a6620fd25ddccc57>

Swedish PM self-isolates as nation passes grim threshold

<https://apnews.com/article/virus-outbreak-stefan-lofven-denmark-sweden-europe-bd0a4d9da3340dda2c98b83c56402b47>

AstraZeneca to deliver vaccine trial data by year's end

<https://apnews.com/article/business-virus-outbreak-cancer-earnings-oxford-ae32380b13e0349af566f7a51afc5262>

Speeding COVID-19 Drug Discovery with Quantum Dots

<https://directorsblog.nih.gov/2020/11/05/speeding-covid-19-drug-discovery-with-quantum-dots/>

U.S. Sees Highest 1-Week Increase in Child Cases of Coronavirus

- “As of Oct. 29, more than 853,000 children have tested positive for COVID-19 since the onset of the pandemic, including nearly 200,000 new cases in children during the month of October,” the association said in a statement. “In the one-week period ending Oct. 29, there were 61,000 new cases in children, which is larger than any previous week in the pandemic.”
- Despite the significant spike, COVID-19 doesn’t cause severe illness in most children. However, the group said there needs to be more data collected on the long-term impacts the virus has on minors, including the impacts on their physical health, as well as the emotional and mental health toll the coronavirus is having on kids who aren’t infected.
- “I’m very concerned about the long-term harms that children may suffer, particularly Black and Hispanic children, who are suffering a higher number of infections,” said AAP President Sally Goza, MD, FAAP. “This includes not only children who test positive for the virus, but everyone in these communities who are suffering disproportionate emotional and mental health harms.”

https://www.campussafetymagazine.com/news/u-s-sees-highest-1-week-increase-in-child-cases-of-coronavirus/?utm_source=newsletter&utm_medium=email&utm_campaign=content

MIT Team's Cough Detector Identifies 97% of COVID-19 Cases Even in Asymptomatic People

<https://www.sciencealert.com/ai-cough-analysis-could-detect-covid-19-even-if-you-re-asymptomatic>



U.S. Data

https://covid.cdc.gov/covid-data-tracker/#cases_casesinlast7days

United States COVID-19 Cases and Deaths by State

Reported to the CDC since January 21, 2020

TOTAL CASES
9,357,245
+88,427 New Cases

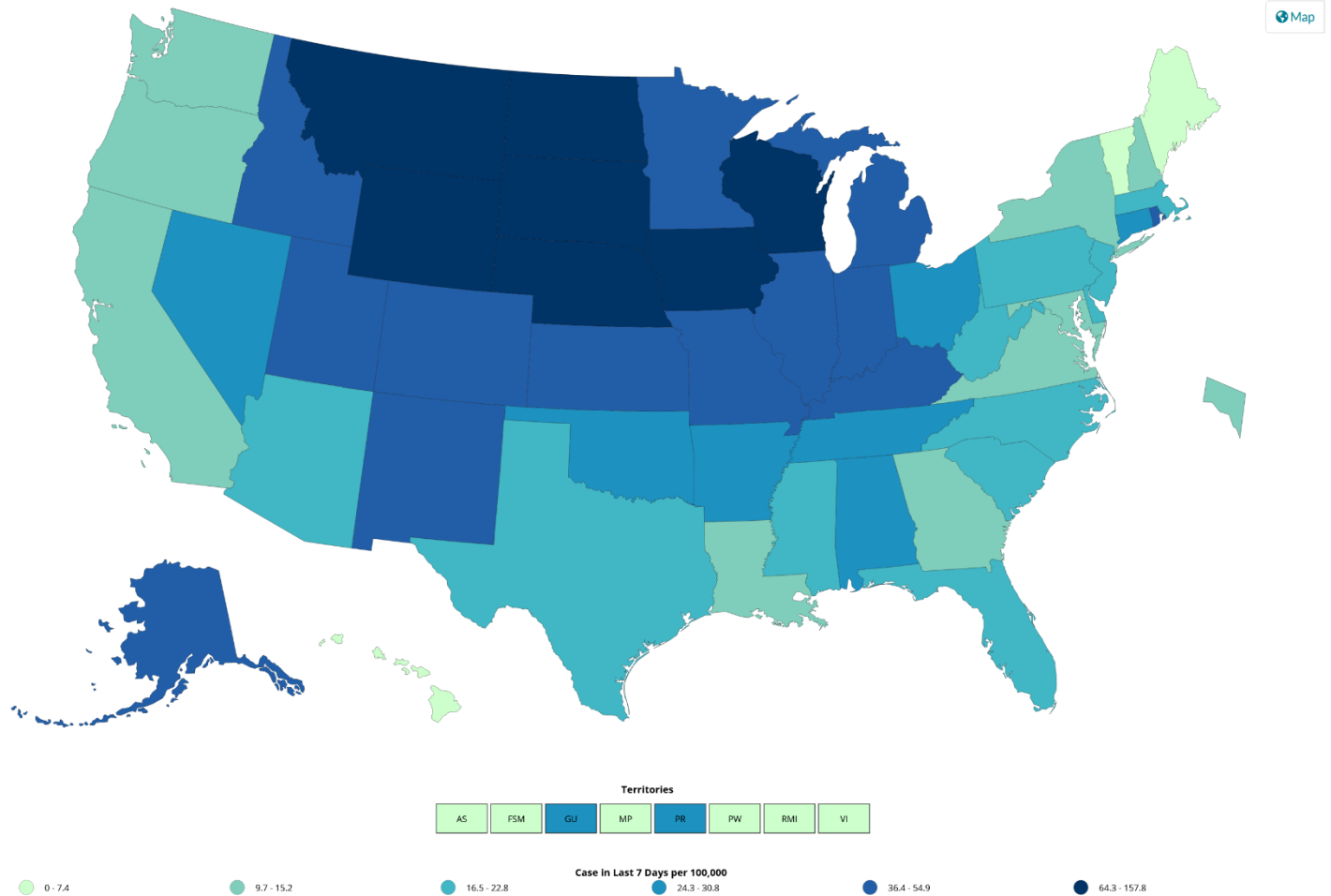
CASES IN LAST 7 DAYS PER 100K
26.1

TOTAL DEATHS
231,988
+1,095 New Deaths

CDC | Updated: Nov 4 2020 1:53PM

- View:**
 Cases
 Deaths
- Time period:**
 Last 7 Days
 Since Jan 21, 2020
- Metric:**
 Count
 Rate per 100,000

US COVID-19 Case Rate Reported to the CDC in the Last 7 Days, by State/Territory (cases per 100K)



United States COVID-19 Cases and Deaths by State

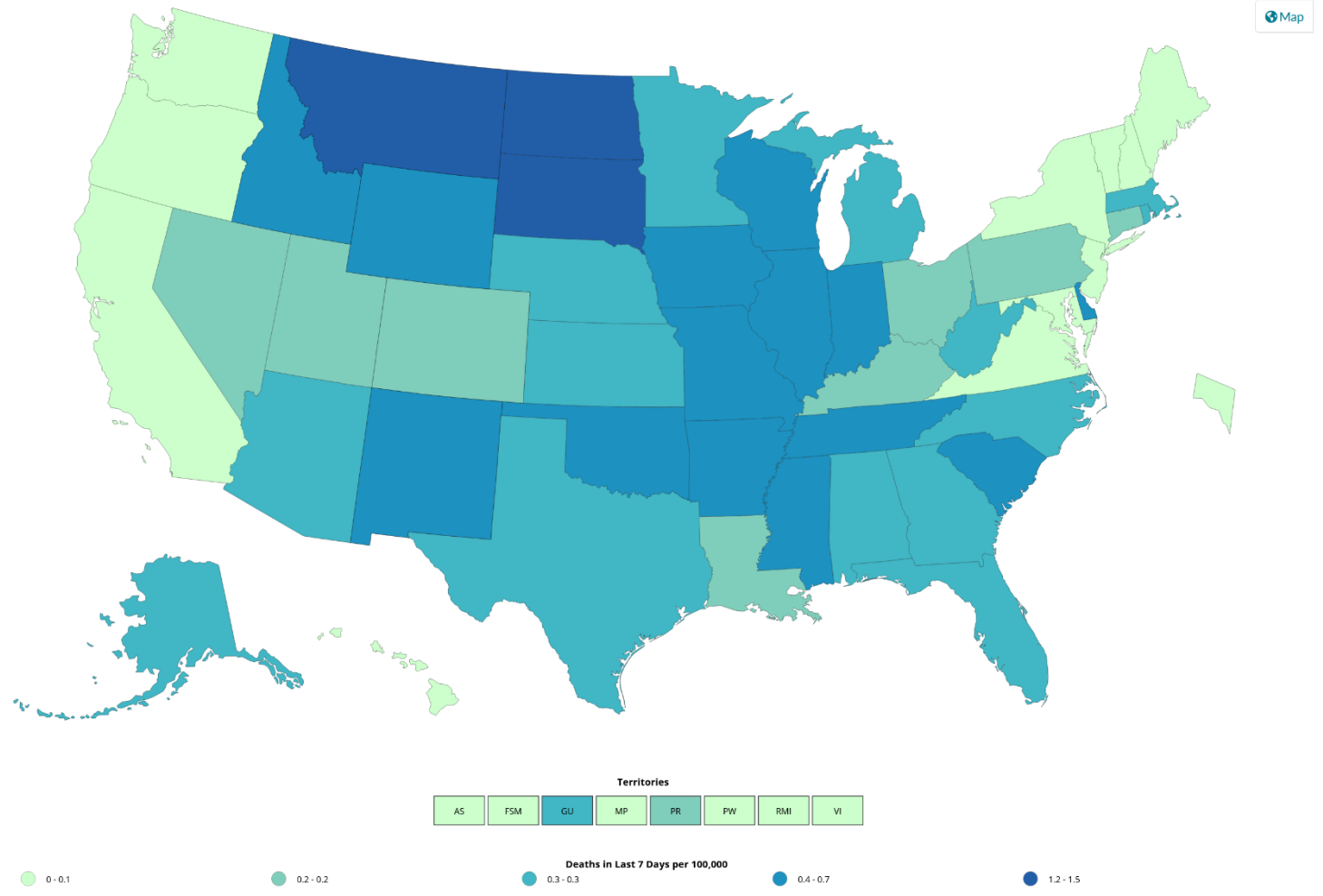
Reported to the CDC since January 21, 2020

TOTAL CASES 9,357,245 +88,427 New Cases	DEATHS IN LAST 7 DAYS PER 100K 0.3	TOTAL DEATHS 231,988 +1,095 New Deaths
---	---	--

CDC | Updated: Nov 4 2020 1:53PM

View: <input type="radio"/> Cases <input checked="" type="radio"/> Deaths	Time period: <input checked="" type="radio"/> Last 7 Days <input type="radio"/> Since Jan 21, 2020	Metric: <input type="radio"/> Count <input checked="" type="radio"/> Rate per 100,000
--	---	--

US COVID-19 Death Rate Reported to the CDC in the Last 7 Days, by State/Territory (deaths per 100K)



Confirmed COVID-19 Cases and Deaths in US Correctional and Detention Facilities By State

Overall Cases Deaths

1,316
Affected Facilities

204,363
Total Cases

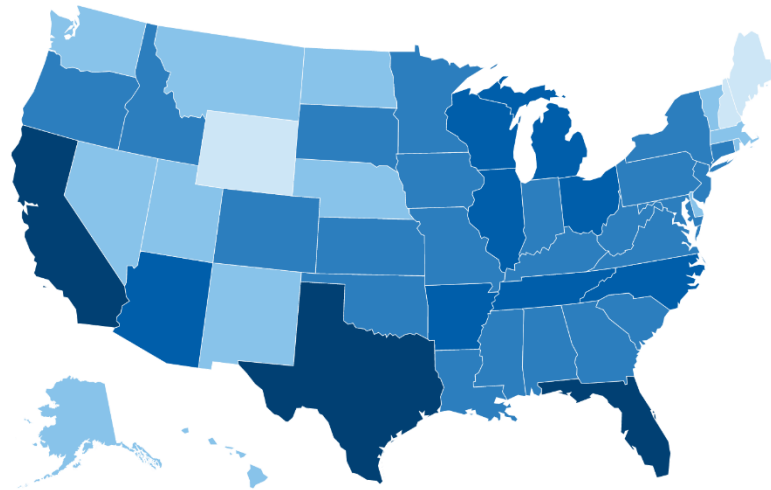
166,728
Total Resident Cases

37,635
Total Staff Cases

1,308
Total Deaths

1,252
Total Resident Deaths

56
Total Staff Deaths



Jurisdiction	Cases	Deaths	Facilities	Jurisdiction	Cases	Deaths	Facilities
Texas	30,097	210	167	Kentucky	1,956	24	22
California*	27,885	102	79	South Dakota	1,836	0	11
Florida	21,585	178	78	West Virginia	1,824	3	19
Michigan	8,307	82	41	Colorado	1,717	4	16
Ohio	8,275	121	30	Oregon	1,564	0	14
Arkansas	7,364	5	4	Iowa	1,514	4	10
Tennessee	6,970	27	20	Alabama	1,153	29	33
Wisconsin	5,916	0	38	Mississippi	1,063	7	24
Illinois	5,862	40	45	Montana	851	0	14
North Carolina	5,317	46	57	Washington	792	3	28
Arizona	5,315	29	23	New Mexico	760	4	11
Missouri	5,000	12	25	Delaware	751	11	1
New York*	4,963	36	43	Massachusetts	635	2	16
Oklahoma	4,904	23	32	Utah	490	0	7
Kansas	4,611	7	13	Hawaii	484	0	5
Virginia	4,491	34	38	Nebraska	356	4	10
New Jersey	4,434	52	29	North Dakota	286	0	10
Louisiana*	3,589	46	13	Vermont	264	0	6
Georgia	3,380	85	79	Rhode Island	234	0	3
South Carolina	3,175	3	28	Alaska	205	0	2
Minnesota	2,708	2	20	Nevada	198	0	13
Indiana	2,401	34	25	Puerto Rico	57	0	2
Idaho	2,282	2	18	Wyoming	29	0	3
Connecticut	2,202	8	16	New Hampshire	28	0	6
Pennsylvania	2,154	15	41	Maine	22	0	4
Maryland	2,090	14	23	DC	17	0	1

Total Staff Deaths

Last updated 05-Nov-20

Total Number of Cases ● A: 0-100 ● B: 101-1,000 ● C: 1,001-5,000 ● D: 5,001-9,999 ● E: 10,000+

31-Mar-20
Reported data from

30-Oct-20
Data Through

CDC Whats New

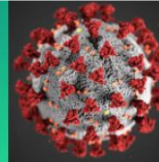
<https://www.cdc.gov/coronavirus/2019-ncov/whats-new-all.html>

- [Data on COVID-19 during Pregnancy](#) Thursday, November 05, 2020
- [Daily Activities and Going Out](#) Thursday, November 05, 2020
- [Frequently Asked Questions about COVID-19 Vaccination](#) Wednesday, November 04, 2020
- [Data on COVID-19 during Pregnancy](#) Wednesday, November 04, 2020
- [Coronavirus Disease 2019 \(COVID-19\)](#) Wednesday, November 04, 2020
- [Cases & Deaths by County](#) Tuesday, November 03, 2020
- [Cases in the U.S.](#) Tuesday, November 03, 2020
- [Text Illness Monitoring \(TIM\)](#) Tuesday, November 03, 2020
- [COVID-19 Science Update released: November 3, 2020](#) Tuesday, November 03, 2020
- [I wear a mask because...](#) Tuesday, November 03, 2020
- [Additional Tools and Resources](#) Tuesday, November 03, 2020
- [Screening K-12 Students for Symptoms of COVID-19: Limitations and Considerations](#) Tuesday, November 03, 2020
- [Isolate If You Are Sick](#) Tuesday, November 03, 2020
- [Your Health](#) Tuesday, November 03, 2020
- [Crew Disembarkations through Commercial Travel](#) Tuesday, November 03, 2020
- [Using Antibody Tests for COVID-19](#) Tuesday, November 03, 2020
- [Considerations for Optimizing the Supply of Powered Air-Purifying Respirators \(PAPRs\)](#) Tuesday, November 03, 2020

COVID-19 Science Update released: November 3, 2020

https://www.cdc.gov/library/covid19/110320_covidupdate.html

COVID-19 Science Update



From the Office of the Chief Medical Officer, CDC COVID-19 Response, and the CDC Library, Atlanta GA. Intended for use by public health professionals responding to the COVID-19 pandemic.

*** Available on-line at <http://www.cdc.gov/library/covid19> ***

[PDF version for this update](#) [PDF - 893 KB]

COVID-19 Science Updates

Here you can find all previous COVID-19 Science Updates.

In This Update

[Neuropilin-1](#)

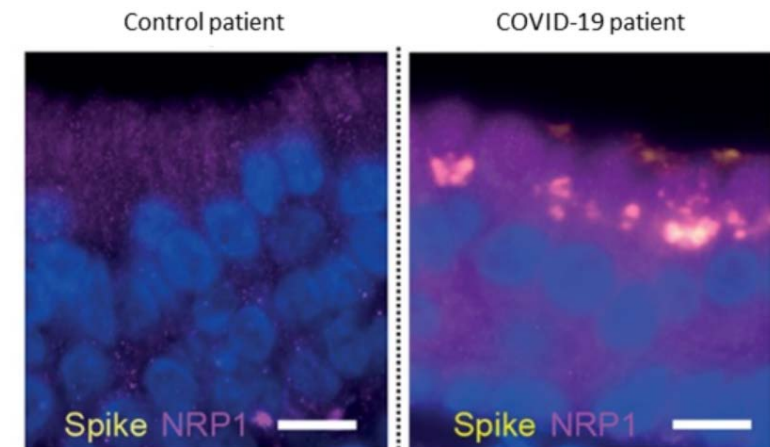
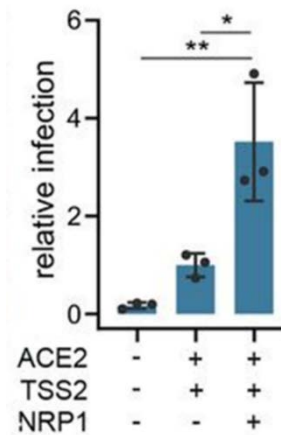
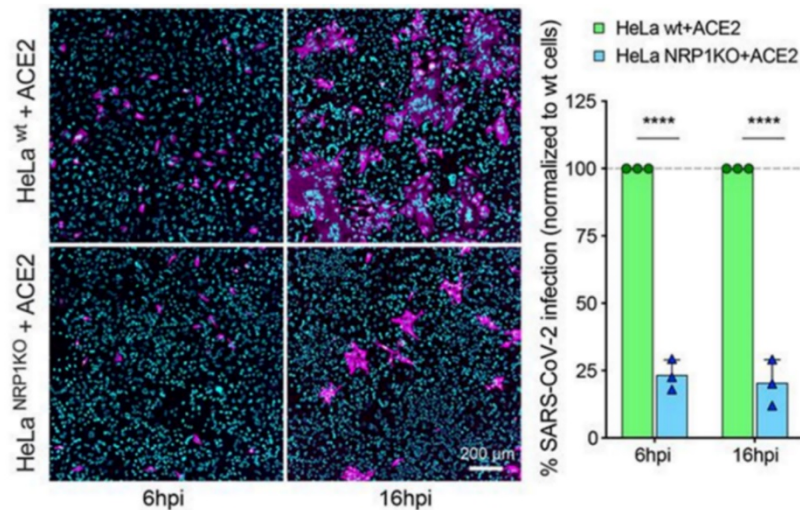
[Laboratory Science](#)

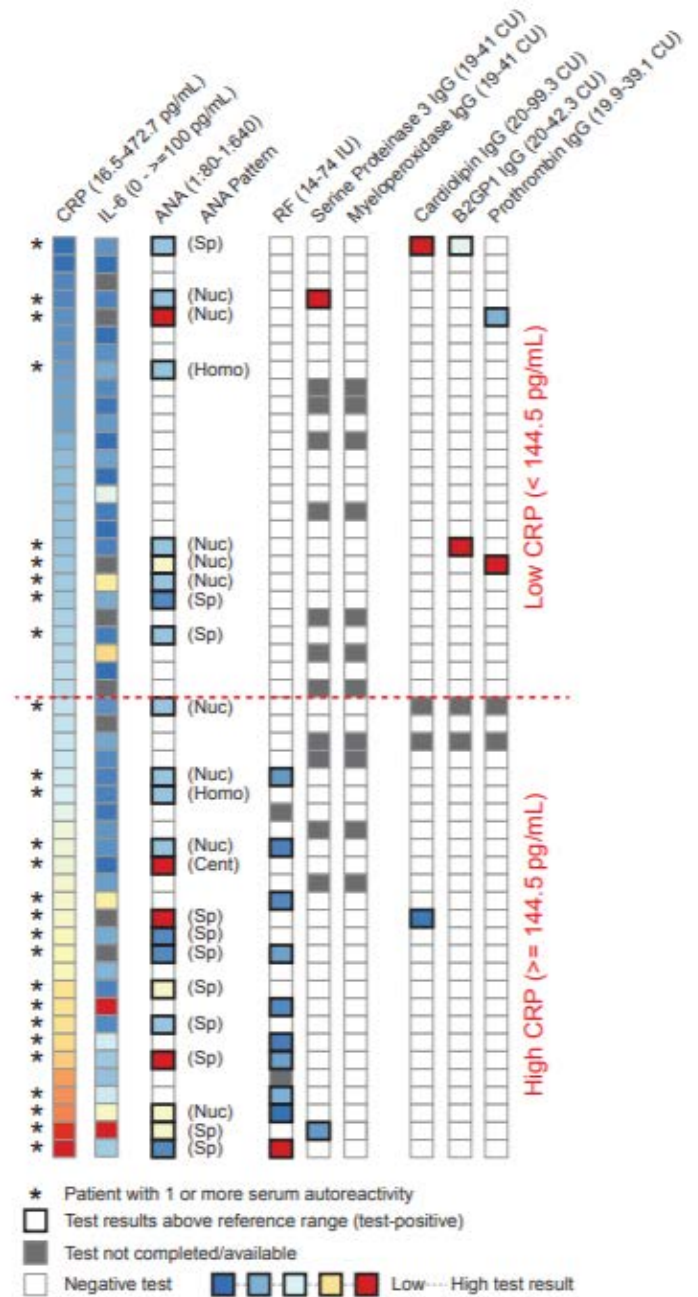
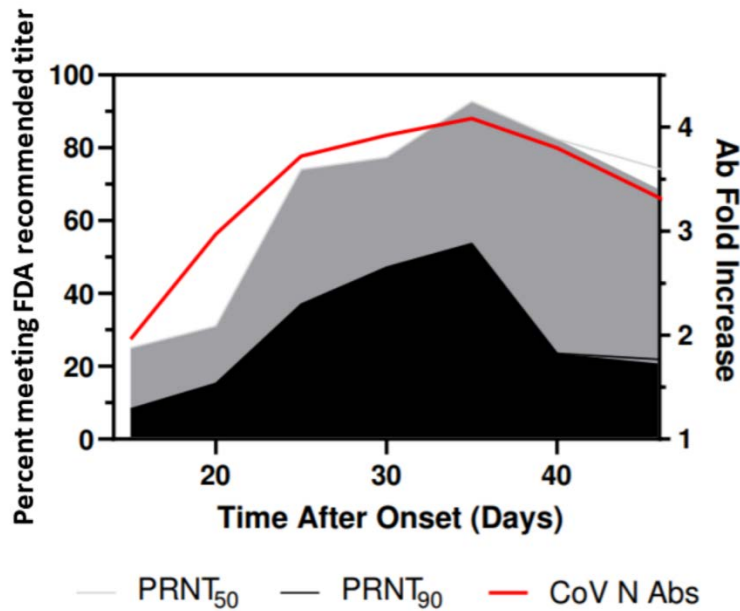
[Epidemiology](#)

[Clinical Treatment & Management](#)

[In Brief](#)

[Neuropilin-1](#)





Biweekly change in COVID-19 cases and deaths reported by countries and territories in the Region of the Americas

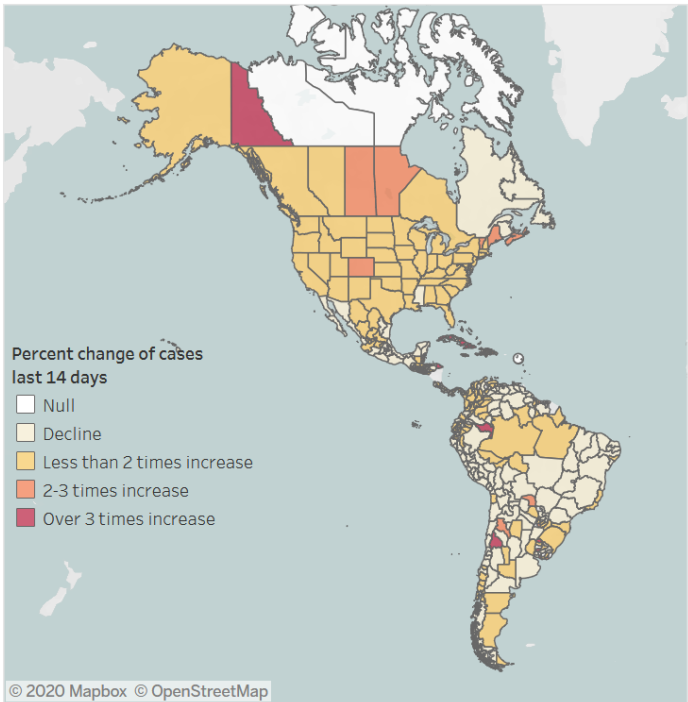
Data reported as of 5 November, 2020

Cases and Deaths Weekly Change

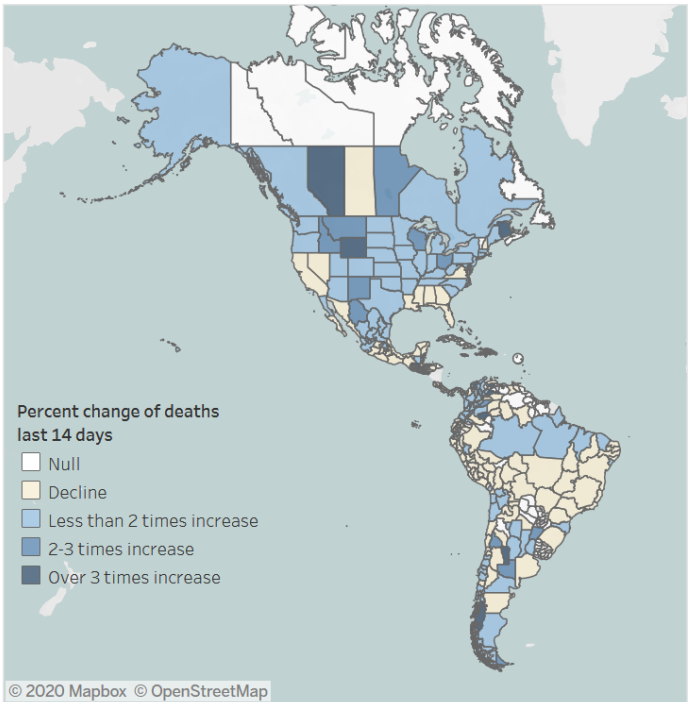
COVID-19 Cases by EW

Select subregion
(All)

Cases % change last 14 days



Deaths % change last 14 days



Reported SARS-CoV-2 cases and deaths - All subregion(s)

Who Subregion	Country Code	Cases reported last 14 days	Biweekly cases % change	Deaths reported last 14 days	Biweekly deaths % change
North America	CAN	41,247	27%	96	-45%
	MEX	77,691	-15%	8,378	-1%
	USA	1,097,140	43%	14,956	77%
	Total	1,216,078	37%	23,430	37%
Central America	BLZ	904	41%	0	
	CRI	14,198	-10%	103	255%
	GTM	6,732	0%	514	-9%
	HND	8,456	-12%	480	90%



California Takes Action to Combat COVID-19

<https://www.gov.ca.gov/california-takes-action-to-combat-covid-19/>

State Data

<https://covid19.ca.gov/>
<https://update.covid19.ca.gov/#top>
<https://www.cdph.ca.gov/Programs/CID/DCDC/Pages/Immunization/ncov2019.aspx#>

“Safer Economy Blueprint”

<https://covid19.ca.gov/safer-economy>

Blueprint for a Safer Economy – COVID-19 and Equity

<https://www.cdph.ca.gov/Programs/CID/DCDC/Pages/COVID-19/CaliforniaHealthEquityMetric.aspx>
<https://covid19.healthylivesindex.org/>
<https://map.healthylivesindex.org/>

Statewide industry guidance to reduce risk

<https://covid19.ca.gov/industry-guidance/#top>
<https://www.cdph.ca.gov/Programs/CID/DCDC/Pages/Guidance.aspx>

Data models

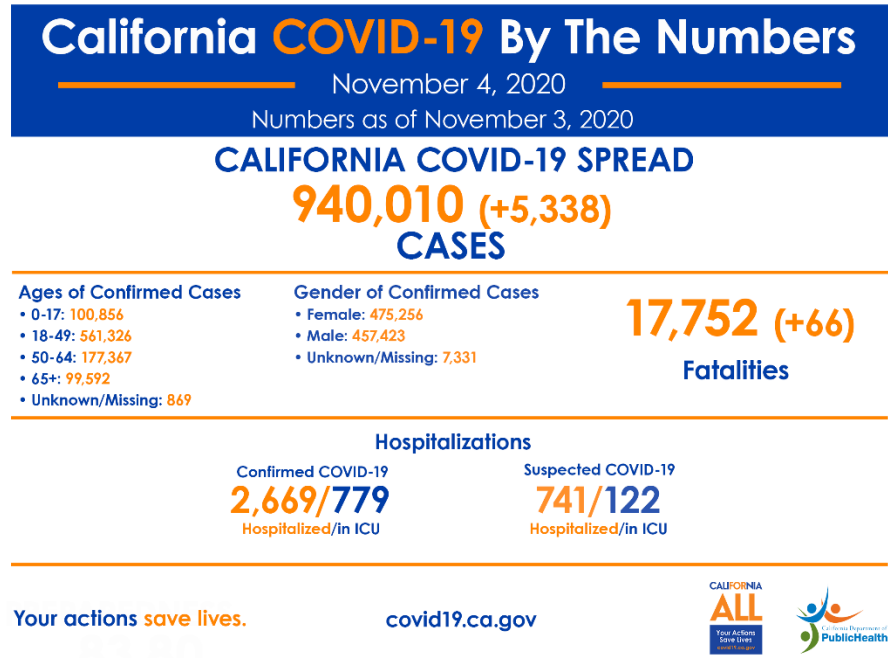
<https://covid19.ca.gov/data-and-tools/>



Office of Governor
GAVIN NEWSOM

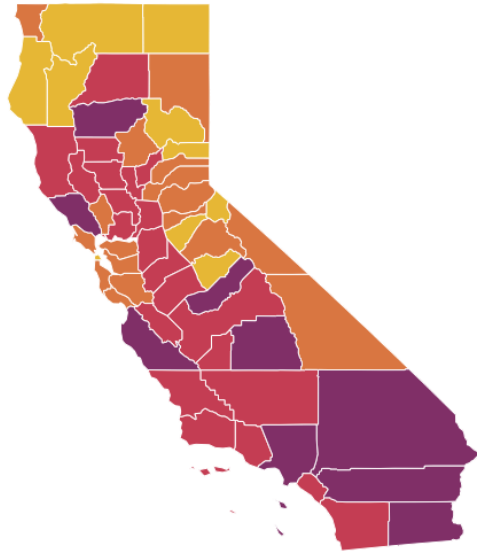
Press Releases, Executive Orders, Media Advisories,
Proclamations, and “On the Record” Column

<https://www.gov.ca.gov/newsroom/>



Current tier assignments as of October 27, 2020

All data and tier assignments are updated weekly every Tuesday (due to Election Day, the Tuesday, November 3 update has been moved to Wednesday, November 4).



Statewide metrics
 7.2 New COVID-19 positive cases per day per 100K
 3.2% Positivity rate

Find a county

Click on the map for updated metrics

- Widespread
- Substantial
- Moderate
- Minimal

	Higher Risk → Lower Risk of Community Disease Transmission			
	Widespread Tier 1	Substantial Tier 2	Moderate Tier 3	Minimal Tier 4
Measure*				
Adjusted Case Rate for Tier Assignment** (Rate per 100,000 excluding prison cases, 7 day average with 7 day lag)	>7	4-7	1-3.9	<1
Testing Positivity*** (Excluding prison cases, 7 day average with 7 day lag)	>8%	5-8%	2.4-9%	<2%

COVID-19 Race and Ethnicity Data

November 3, 2020

All Cases and Deaths associated with COVID-19 by Race and Ethnicity

Race/Ethnicity	No. Cases	Percent Cases	No. Deaths	Percent Deaths	Percent CA population
Latino	407,046	60.9	8,547	48.5	38.9
White	118,777	17.8	5,313	30.2	36.6
Asian	37,185	5.6	2,071	11.8	15.4
African American	28,099	4.2	1,316	7.5	6.0
Multi-Race	7,765	1.2	143	0.8	2.2
American Indian or Alaska Native	1,899	0.3	58	0.3	0.5
Native Hawaiian and other Pacific Islander	3,582	0.5	84	0.5	0.3
Other	64,357	9.6	77	0.4	0.0
Total with data	668,710	100.0	17,609	100.0	100.0

Cases: 940,010 total; 271,300 (29%) missing race/ethnicity

Deaths: 17,771 total; 162 (1%) missing race/ethnicity

*867 cases with missing age

**Census data does not include 'other race' category

Proportions of Cases and Deaths by Race and Ethnicity Among Ages 0-17

Race/Ethnicity	No. Cases	Percent Cases	No. Deaths	Percent Deaths	Percent CA Population
Latino	53,965	72.9	1	50.0	47.9
White	6,986	9.4	0	0.0	29.2
Asian	2,242	3.0	1	50.0	12.7
African American	2,008	2.7	0	0.0	5.4
Multi-Race	852	1.2	0	0.0	4.0
American Indian	206	0.3	0	0.0	0.4
Native Hawaiian and other Pacific Islander	241	0.3	0	0.0	0.3
Other	7,544	10.2	0	0.0	0.0
Total	74,044	100.0	2	100.0	100.0

Cases: 100,856 total; 26,812 (27%) unknown race/ethnicity

Deaths: 2 total; 0 (0%) unknown race/ethnicity

*Census data does not include 'other race' category

All Cases and Deaths by Race and Ethnicity Among Ages 18+

Race/Ethnicity	No. Cases	Percent Cases	No. Deaths	Percent Deaths	Percent CA population
Latino	352,773	59.4	8,546	48.5	36.3
White	111,711	18.8	5,312	30.2	38.8
Asian	34,932	5.9	2,070	11.8	16.2
African American	26,061	4.4	1,316	7.5	6.1
Multi-Race	6,912	1.2	143	0.8	1.7
American Indian or Alaska Native	1,691	0.3	58	0.3	0.5
Native Hawaiian and other Pacific Islander	3,340	0.6	84	0.5	0.3
Other	56,791	9.6	77	0.4	0.0
Total with data	594,211	100.0	17,606	100.0	100.0

Cases: 838,287 total; 244,076 (29%) missing race/ethnicity

Deaths: 17,768 total; 162 (1%) missing race/ethnicity

*Census data does not include 'other race' category

Cases and Deaths Associated with COVID-19

by Age Group in California

November 3, 2020

Age Group	No. Cases	Percent Cases	No. Deaths	Percent Deaths	Percent CA Population
<5	21,309	2.3	0	0.0	5.8
5-17	79,547	8.5	2	0.0	16.7
18-34	329,898	35.1	282	1.6	24.3
35-49	231,428	24.6	1,000	5.6	19.3
50-59	130,217	13.9	1,874	10.5	12.5
60-64	47,150	5.0	1,508	8.5	5.9
65-69	32,240	3.4	1,830	10.3	5.0
70-74	22,509	2.4	1,981	11.1	4.1
75-79	15,436	1.6	1,977	11.1	2.7
80+	29,407	3.1	7,316	41.2	3.9
missing	869	0.1	1	0.0	0.0
Total	940,010	100.0	17,771	100.0	100.0

State Officials Announce Latest COVID-19 Facts

November 4, 2020 - The California Department of Public Health (CDPH) today announced the most recent statistics on COVID-19.

State Officials Announce Latest COVID-19 Facts

November 3, 2020 - The California Department of Public Health (CDPH) today announced the most recent statistics on COVID-19.

State Officials Announce Latest COVID-19 Facts

November 2, 2020 - The California Department of Public Health (CDPH) today announced the most recent statistics on COVID-19.

State Officials Announce Latest COVID-19 Facts

November 1, 2020 - The California Department of Public Health (CDPH) today announced the most recent statistics on COVID-19.

State Officials Announce Latest COVID-19 Facts

October 31, 2020 - The California Department of Public Health (CDPH) today announced the most recent statistics on COVID-19.



Riverside County Data

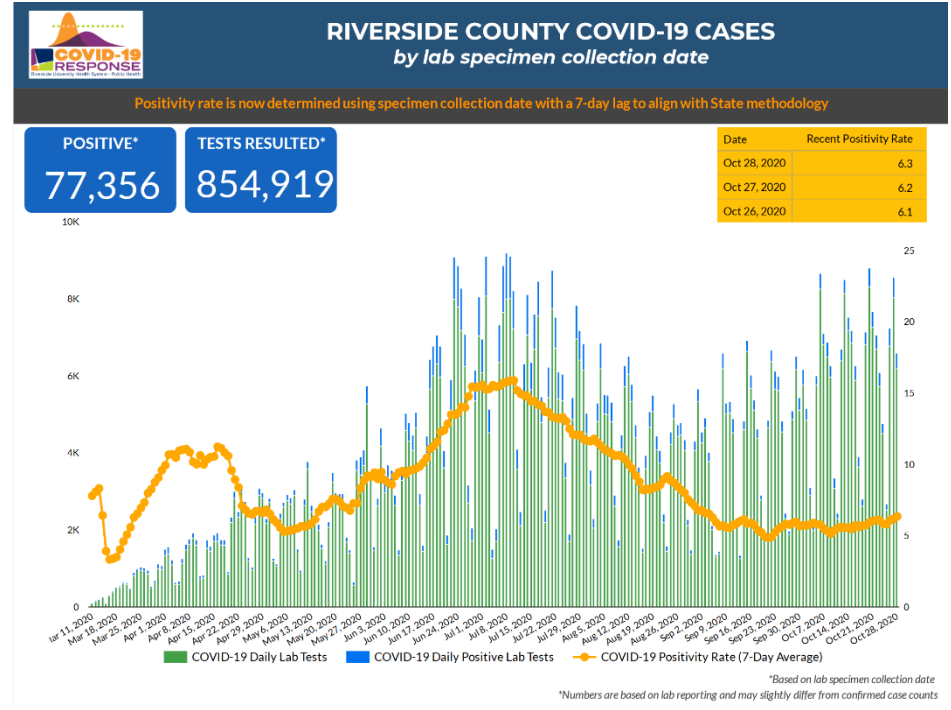
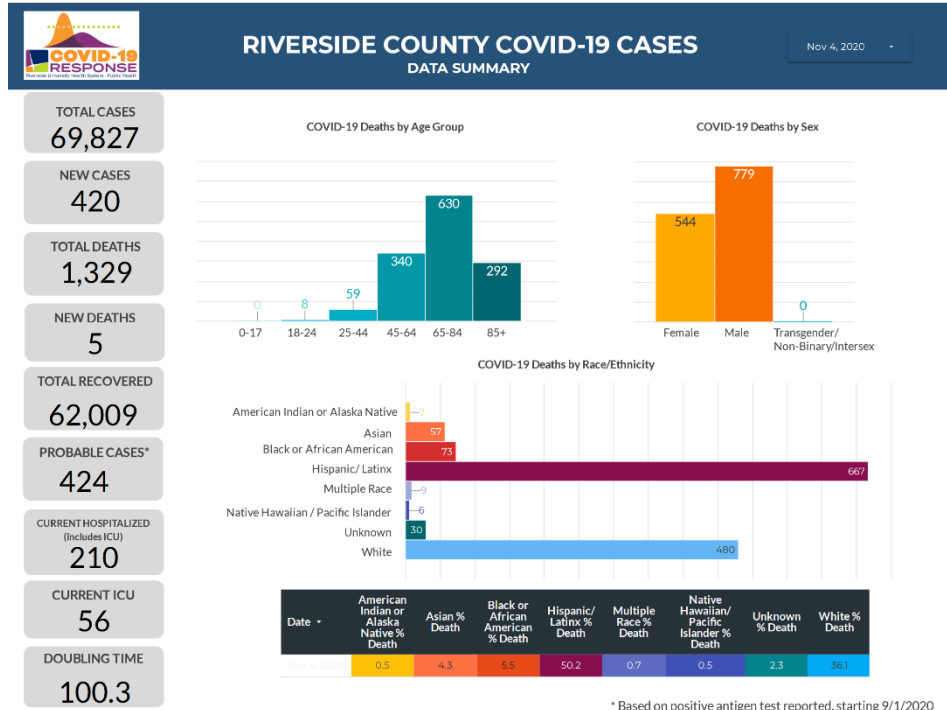
RUHS Public Health News:

- [CNUSD TK-6 Waiver Approved by County & State](#) - November 3, 2020
- Riverside County health officials offer alternatives to traditional Halloween celebrations [English](#) / [Spanish](#) - October 29, 2020
- Riverside County officials: It's up to all of us to return to red. Get tested [English](#) / [Spanish](#) - October 23, 2020
- State announces Riverside County moved back to purple tier, businesses to adjust within 72 hours [English](#) / [Spanish](#) - October 20, 2020
- Three free flu-shot clinics planned throughout Riverside County starting Friday [English](#) / [Spanish](#) - October 15, 2020


Dashboard -Click [here](#) for more detailed city/community data and reports

Daily Epidemiology Summary updated 11-04-2020

https://www.rivcoph.org/Portals/0/Documents/CoronaVirus/November/Dashboard/1/Public%20Daily_COVID-19_Updates%20-%202020-11-04.pdf?ver=2020-11-04-132851-250×tamp=1604525342858



Weather

 National Weather Service San Diego, California		<h2>Weather Threats Outlook</h2> 11 AM PST Thursday November 5, 2020						
County	Zone	Thu 11/5	Fri 11/6	Sat 11/7	Sun 11/8	Mon 11/9	Tue 11/10	Wed 11/11
San Diego	Beach/Marine	Warm	Increasing Wind & Surf	Windy/Showers High Surf	Windy/Showers High Surf	Cool Elevated Surf	Cool	Cool
	Coast	Warm	Cooler	Showers/Breezy	Showers/Breezy	Cool	Cool	Cool
	Valleys	Fire Weather Very Warm	Cooler	Showers Breezy	Showers Breezy	Cool	Cool	Cool
	Mountains	Fire Weather	Windy PM	Showers/Fog Windy	Showers/Fog Windy	Cold	Cold	Fire Weather
	Deserts	Very warm	Windy PM	Windy	Windy	Cool	Cool	Cool
Orange	Beach	Warm	Cooler	Showers/Breezy Elevated Surf	Showers/Breezy Elevated Surf	Cool	Cool	Cool
	Coast	Warm	Cooler	Showers Breezy	Showers Breezy	Cool	Cool	Cool
	Inland	Very Warm	Cooler	Showers Breezy	Showers Breezy	Cool	Cool	Cool
	Mountains	Fire Weather	Breezy	Showers/Fog Breezy	Showers/Fog Breezy	Cold	Cold	Cool
Riverside	Inland Empire	Fire Weather Very Warm	Cooler	Showers Breezy	Showers Breezy	Cool	Cool	Cool
	Mountains	Fire Weather	Windy PM	Snow/Rain/Fog Windy	Snow/Rain/Fog Windy	Cold	Cold	Fire Weather
	Desert	Very warm	Windy PM	Windy	Windy	Cool	Cool	Cool
San Bernardino	Inland Empire	Fire Weather Very warm	Cooler	Showers Breezy	Showers Breezy	Cool	Cool	Cool
	Mountains	Fire Weather	Windy PM	Snow/Rain/Fog Windy	Snow/Rain/Fog Windy	Cold	Cold	Fire Weather
	Desert	Very warm	Windy PM	Windy	Windy	Patchy Frost	Patchy Frost	Cool

Impact Threat Levels
None
Low
Medium
High
Extreme

Latest hazard threat table: <https://www.wrh.noaa.gov/sqx/event/dsstable.php>

<https://www.weather.gov/forecastpoints#>