



# Daily Situation Summary

## Tuesday, October 6, 2020

### As of 10:00 AM

#### COVID-19 by the Numbers

| 10/06/2020                      | Riverside              | Imperial*              | Kern                   | Los Angeles                  | Orange                 | San Bernardino        | San Diego              | San Luis Obispo       | Santa Barbara         | Ventura                | California              | United States             | Global                     |
|---------------------------------|------------------------|------------------------|------------------------|------------------------------|------------------------|-----------------------|------------------------|-----------------------|-----------------------|------------------------|-------------------------|---------------------------|----------------------------|
| Total Cases                     | 60,251                 | 11,127                 | 31,906                 | 272,822                      | 53,966                 | 55,100                | 48,438                 | 3,688                 | 9,276                 | 13,197                 | 826,784                 | 7,396,730                 | 35,347,404                 |
| New Cases                       | 260                    | 37                     | 42                     | 953                          | 393                    | 96                    | 236                    | 18                    | 20                    | 47                     | 3,055                   | 36,778                    | 235,860                    |
| Total Cases Per Capita          | 2,528                  | 6,174                  | 3,613                  | 2,702                        | 1,706                  | 2,580                 | 1,467                  | 1,310                 | 2,090                 | 1,556                  | 2,112                   | 2,239                     | 460                        |
| New Cases Per Capita            | 10.91                  | 20.53                  | 4.76                   | 9.44                         | 12.42                  | 4.50                  | 7.15                   | 6.40                  | 4.51                  | 5.54                   | 7.80                    | 11.13                     | 3.07                       |
| Recovered                       | <a href="#">55,212</a> | <a href="#">11,471</a> | <a href="#">16,404</a> | <a href="#">Not Reported</a> | <a href="#">48,923</a> | <a href="#">5,317</a> | <a href="#">44,122</a> | <a href="#">3,513</a> | <a href="#">9,082</a> | <a href="#">12,224</a> | <a href="#">430,038</a> | <a href="#">4,909,966</a> | <a href="#">26,981,848</a> |
| Total Deaths                    |                        | 326                    | 386                    | 6,647                        | 1,286                  | 962                   | 803                    | 31                    | 115                   | 153                    | 16,149                  | 209,199                   | 1,039,406                  |
| New Deaths                      | 0                      | 0                      | 0                      | 5                            | 0                      | 0                     | 5                      | 0                     | 0                     | 0                      | 29                      | 378                       | 4,051                      |
| Deaths Per Capita               | 0.00                   | 180.89                 | 43.71                  | 65.82                        | 40.64                  | 45.05                 | 24.31                  | 11.01                 | 25.92                 | 18.04                  | 41.25                   | 63.32                     | 13.52                      |
| <i>Presumptive active cases</i> | 5,039                  | -670                   | 15,116                 |                              | 3,757                  | 48,821                | 3,513                  | 144                   | 79                    | 820                    | 380,597                 | 2,277,565                 | 7,326,150                  |
| % of State's Cases              | 7.29%                  | 1.35%                  | 3.86%                  | 33.00%                       | 6.53%                  | 6.66%                 | 5.86%                  | 0.45%                 | 1.12%                 | 1.60%                  | <b>11.18%</b>           | <b>20.93%</b>             |                            |
| Currently in Hospitals          | 201                    | 24                     | 62                     | 1,058                        | 210                    | 234                   | 256                    | 4                     | 22                    | 42                     | 3,146                   |                           |                            |
| Total Hospital Beds             | 3,361                  | 259                    | 1,317                  | 19,854                       | 5,897                  | 3,825                 | 6,805                  | 451                   | 666                   | 1,247                  | 66,853                  |                           |                            |
| Currently in ICU                | 40                     | 10                     | 19                     | 201                          | 53                     | 49                    | 70                     | 0                     | 6                     | 14                     | 681                     |                           |                            |
| ICU Beds Available              | 112                    | 6                      | 70                     | 1,072                        | 234                    | 180                   | 307                    | 30                    | 56                    | 53                     | 2,992                   |                           |                            |
| Case Fatality Rate              | 0.000%                 | 2.930%                 | 1.210%                 | 2.436%                       | 2.383%                 | 1.746%                | 1.658%                 | 0.841%                | 1.240%                | 1.159%                 | 1.953%                  | 2.828%                    | 2.941%                     |
| Population*                     | 2,383,286              | 180,216                | 883,053                | 10,098,052                   | 3,164,182              | 2,135,413             | 3,302,833              | 281,455               | 443,738               | 848,112                | 39,148,760              | 330,368,050               | 7,685,133,000              |
| % of Population                 | 6.09%                  | 0.46%                  | 2.26%                  | 25.79%                       | 8.08%                  | 5.45%                 | 8.44%                  | 0.72%                 | 1.13%                 | 2.17%                  | <b>0.25%</b>            | <b>0.0962%</b>            |                            |

Sources: CDPH, WHO, CDC

The date for which case statistics and hospital data were reported. Hospital COVID data are self-reported through a portal managed by the California Hospital Association and pulled at 2pm. COVID case statistics are reported by local health departments to CalREDIE and are pulled at 2pm. Hospital data and case statistics are integrated by the California Department of Technology and made available through the Open Data Portal the following morning. CA Open Data Portal is at least 24 Hours behind although a backlog of new case reports at the State level has ostensibly been cleared, some County dashboards still contain notes that indicate data are missing. \*California-Demographics.com made by Cubit - a demographic data provider & census.gov

Presumptive active cases - A calculation (Total Cases - Recovered - Dead) (LA County does not report recovery rates and \*Imperial County case data reporting is delayed to the state data source)

#### News

More detail on page 2

#### US Data

More detail on page 3

#### State Data

More detail on page 8

#### Riverside County Data

More detail on page 11

#### Weather

More detail on page 12

#### Wildfire

More detail on page 13

**News** – The collection of news articles is related to COVID-19. The inclusion or order of articles is not intended to reflect their importance, nor is it intended to endorse the political viewpoints or affiliations included in news coverage.

### **CDC issues updated guidance [How COVID-19 Spreads](#)**

- The website, which includes information about the potential for airborne spread of the virus that causes COVID-19.
- CDC continues to believe, based on current science, that people are more likely to become infected the longer and closer they are to a person with COVID-19.
- Today's update acknowledges the existence of some published reports showing limited, uncommon circumstances where people with COVID-19 infected others who were more than 6 feet away or shortly after the COVID-19-positive person left an area. In these instances, transmission occurred in poorly ventilated and enclosed spaces that often involved activities that caused heavier breathing, like singing or exercise. Such environments and activities may contribute to the buildup of virus-carrying particles.
- CDC's recommendations remain the same based on existing science and after a thorough technical review of the guidance. People can protect themselves from the virus that causes COVID-19 by staying at least 6 feet away from others, wearing a mask that covers their nose and mouth, washing their hands frequently, cleaning touched surfaces often and staying home when sick.  
<https://www.cdc.gov/media/releases/2020/s1005-how-spread-covid.html>

### **Flurry of coronavirus reinfections leaves scientists puzzled**

- A 33-year-old man landed in Hong Kong after flying home from Spain. On arrival, he was screened for coronavirus. Despite feeling well he tested positive. It was the second time he had picked up Covid-19 in less than five months.
- The case immediately caught scientists' attention. The man was the first in the world to have a confirmed coronavirus reinfection and there were positives to take from the report. First and foremost, he was asymptomatic. Although reinfected with Sars-Cov-2, his immune system swung into action fast and contained the virus without him knowing.  
<https://www.theguardian.com/world/2020/oct/06/flurry-of-coronavirus-reinfections-leaves-scientists-puzzled>

### **She's 13, and the Source of a Family's Covid-19 Outbreak**

- Adolescents who contract Covid-19 usually do not get as sick as adults and often experience few if any symptoms, but they can spread the novel coronavirus that causes the disease to others.
- Scientists from the Centers for Disease Control and Prevention and the health departments of four states — Georgia, Illinois, Massachusetts and Rhode Island — described a 13-year-old girl who became infected with the coronavirus just before a three-week family gathering. Eleven other relatives, including her mother, her father, two brothers and two grandparents, also became infected.  
<https://www.nytimes.com/2020/10/06/health/covid-teenagers-infection.html>

CDC Document: [EARLY RELEASE: Adolescent with COVID-19 as the Source of an Outbreak at a 3-Week Family Gathering - Four States, June-July 2020](#) Monday, October 05, 2020

### **Coronavirus vaccine trial participants report exhaustion, fever and headaches and chills**

- High fever, body aches, bad headaches and exhaustion are just some of the symptoms five participants in two of the leading coronavirus vaccine trials say they felt after receiving the shots.
- The trials, which each have tens of thousands of participants, are double-blind, meaning half of them are receiving saline or another placebo and patients don't know what treatment they are receiving. The health care worker administering the vaccine is also in the dark.
- Interviews, with five participants — three in Moderna's study and two in Pfizer's late-stage trials — said they think the discomfort is worth it to protect themselves against the coronavirus. Four of them asked not to be identified, but CNBC reviewed documentation that verified their participation in the trials.

<https://www.cnbc.com/2020/10/01/coronavirus-vaccine-trial-participants-exhaustion-fever-headaches.html>

### **NIH: SARS-CoV-2 may use key carbohydrate to infect cells**

- SARS-CoV-2 attaches to cells using its spike protein. This protein binds to the ACE2 receptor, a molecule that sits on the surface of human cells. After binding to ACE2, the virus undergoes a structural change that allows it to fuse with the cell. Once inside, the virus is able to reproduce.
- To infect human cells, viruses must pass a dense layer of carbohydrates attached to the cell surface. This layer often includes the carbohydrate heparan sulfate. Several viruses, including herpes and other coronaviruses, are known to bind to heparan sulfate during infection. A team studying heparan sulfate, led by Drs. Thomas Clausen and Jeffrey Esko at UC San Diego, investigated whether the carbohydrate might also play a role in SARS-CoV-2 infection.

<https://www.nih.gov/news-events/nih-research-matters/sars-cov-2-may-use-key-carbohydrate-infect-cells>

### **NIH: Rogue Antibodies and Gene Mutations Explain Some Cases of Severe COVID-19**

<https://directorsblog.nih.gov/2020/10/06/rogue-antibodies-and-gene-mutations-explain-some-cases-of-severe-covid-19/>



# U.S. Data

[https://covid.cdc.gov/covid-data-tracker/#cases\\_casesinlast7days](https://covid.cdc.gov/covid-data-tracker/#cases_casesinlast7days)

**USA**  
**7,436,278**  
**TOTAL CASES**  
 +39,548 New Cases  
 CDC | Updated: Oct 6 2020 12:21PM

**USA**  
**209,560**  
**TOTAL DEATHS**  
 +361 New Deaths  
 CDC | Updated: Oct 6 2020 12:21PM

**USA**  
**306,970**  
**Cases in Last 7 Days**  
 CDC | Updated: Oct 6 2020 12:21PM

### Cases in Last 7 Days by State/Territory

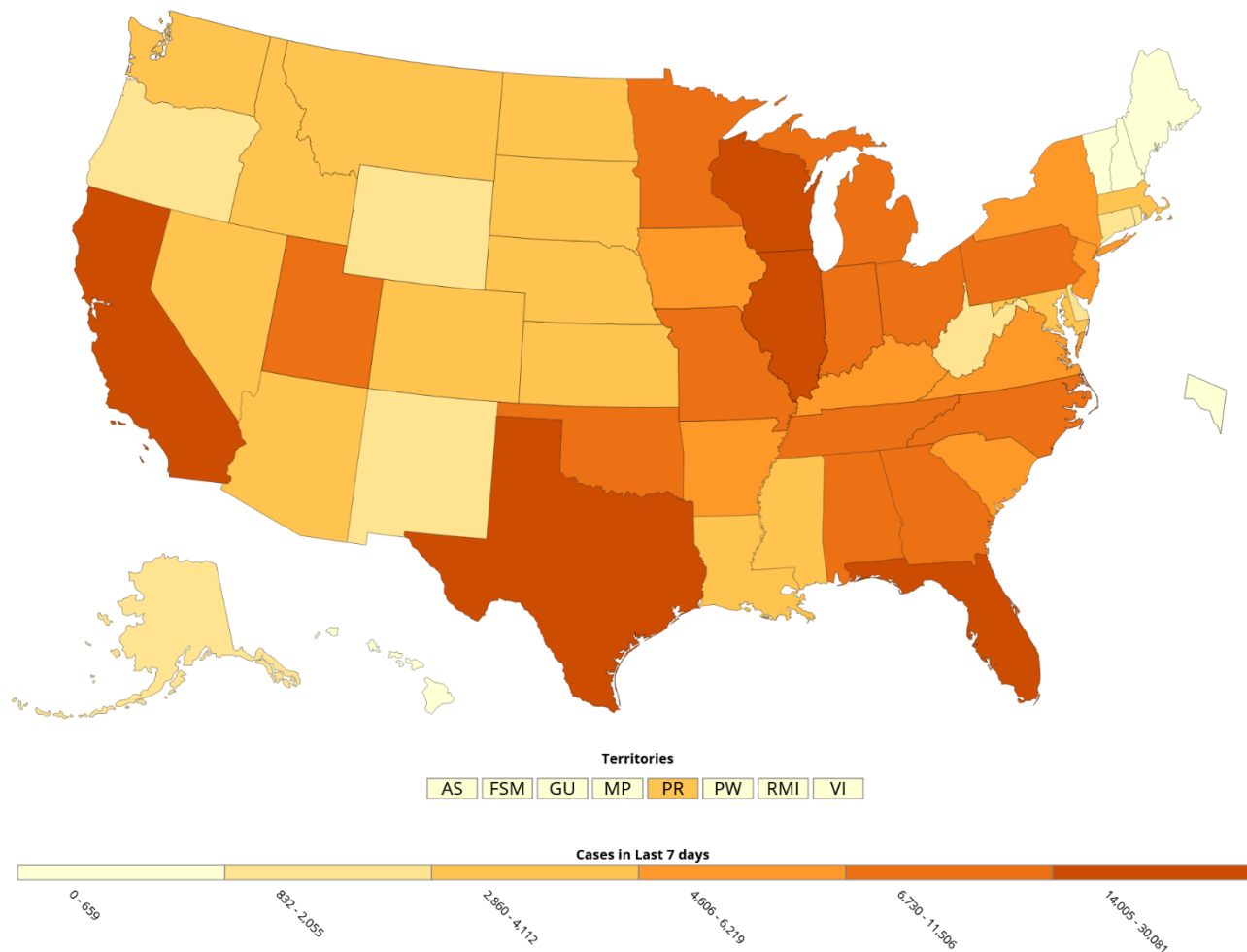
| State/Territory | Cases in Last 7 Days |
|-----------------|----------------------|
| Texas           | 30,081               |
| California      | 21,521               |
| Wisconsin       | 17,438               |
| Florida         | 16,194               |
| Illinois        | 14,005               |
| North Carolina  | 11,506               |
| Missouri        | 10,142               |
| Tennessee       | 9,967                |
| Georgia         | 8,433                |

CDC | Updated: Oct 6 2020 12:21PM

[View Historic Case and Death Data](#)

Cases in Last 7 Days   Total Cases   Cases per 100,000   Deaths in Last 7 Days   Total Deaths   Deaths per 100,000

US COVID-19 Cases Reported to the CDC in the Last 7 Days, by State/Territory



[Download Map](#)

# CDC COVID Data Tracker

Maps, charts, and data provided by the CDC

Case Trends ▾ | Laboratory ▾ | **Community Impact ▾** | Unique Populations ▾ | COVID-19 Home

Mobility | **Social Impact** | School Closures

## Social Impact COVID-19 Events in the United States

**6** EVENTS  
Past 48 hours

Map of news reports related to social impact events resulting from the COVID-19 outbreak in the United States, such as school closures, localized outbreaks, state of emergency declarations, etc.

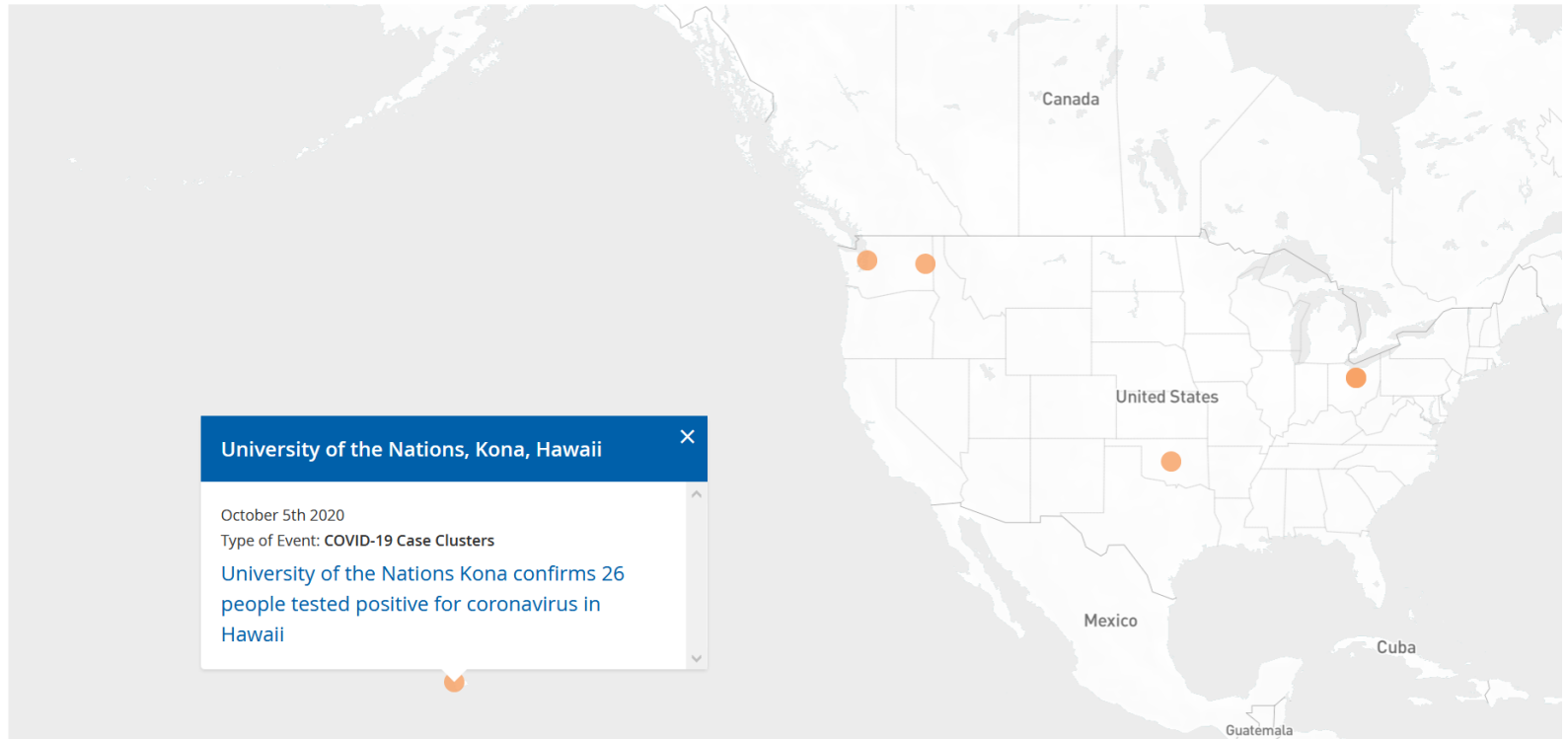
DATE RANGE

Past 48 hours ▾

TYPE OF EVENT ?

COVID-19 Case Clusters ▾

[About this Map](#) | Developed by HealthMap

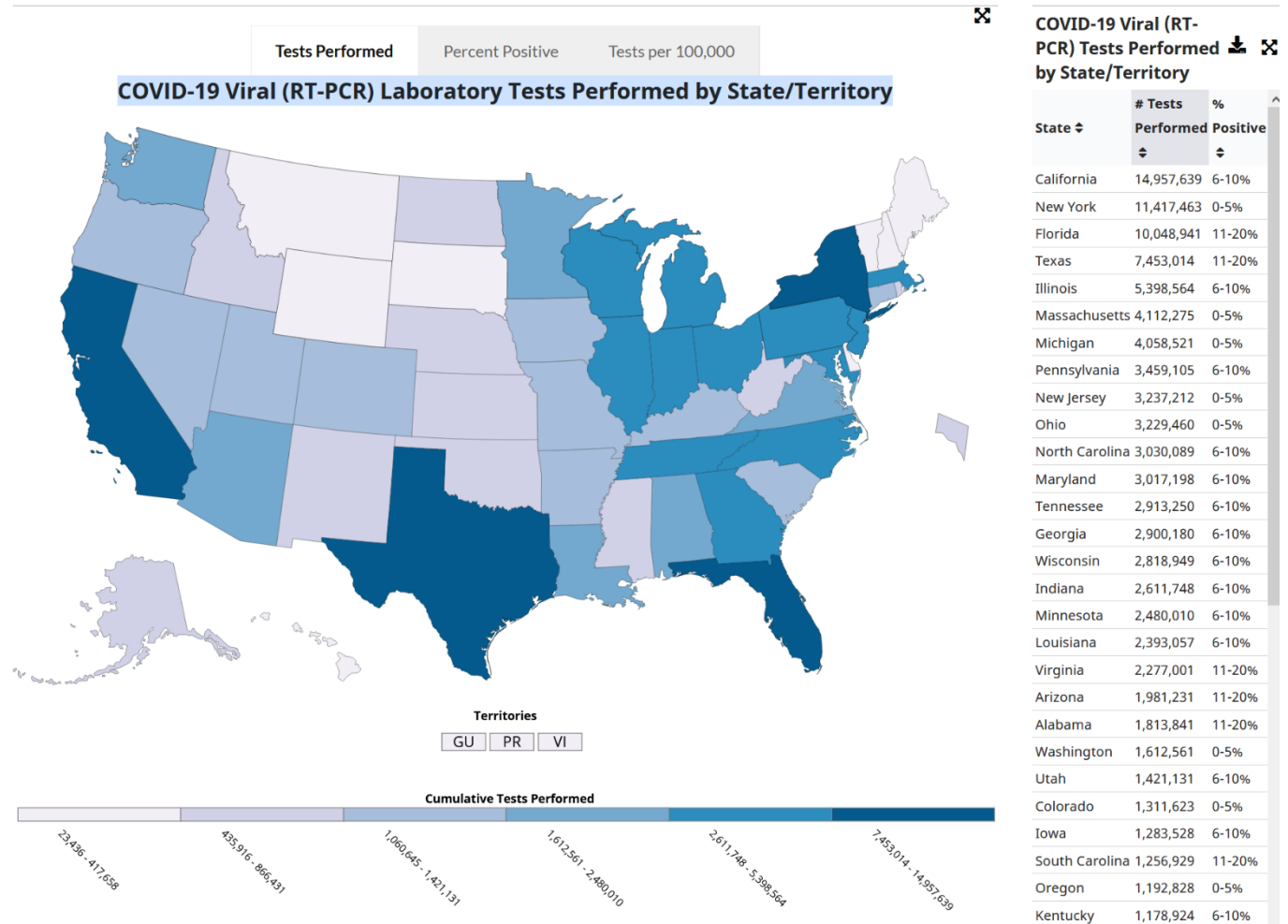


# United States Laboratory Testing

**USA**  
**119,383,314**  
**TESTS REPORTED**  
 CDC | Updated: Oct 6 2020 12:21PM

**USA**  
**9,120,679**  
**POSITIVE TESTS**  
 CDC | Updated: Oct 6 2020 12:21PM

**USA**  
**8%**  
**OVERALL % POSITIVE**  
 CDC | Updated: Oct 6 2020 12:21PM



## CDC Whats New

<https://www.cdc.gov/coronavirus/2019-ncov/whats-new-all.html>

- [Cases & Deaths by County](#) Monday, October 05, 2020
- [Cases in the U.S.](#) Monday, October 05, 2020
- [CDC Updates “How COVID is Spread” Webpage](#) Monday, October 05, 2020
- [EARLY RELEASE: Adolescent with COVID-19 as the Source of an Outbreak at a 3-Week Family Gathering - Four States, June-July 2020](#) Monday, October 05, 2020
- [Considerations for Institutes of Higher Education](#) Monday, October 05, 2020
- [Staffing Resources](#) Monday, October 05, 2020
- [COVID-19 Travel Recommendations by Country](#) Monday, October 05, 2020
- [How COVID-19 Spreads](#) Monday, October 05, 2020
- [Commercial Laboratory Seroprevalence Survey Data](#) Saturday, October 03, 2020
- [EARLY RELEASE: Case Series of Multisystem Inflammatory Syndrome in Adults Associated with SARS-CoV-2 Infection - United Kingdom and United States, March-August 2020](#) Friday, October 02, 2020
- [COVID-19 Science Update released: October 2, 2020](#) Friday, October 02, 2020
- [Large-scale Geographic Seroprevalence Surveys](#) Friday, October 02, 2020
- [COVIDView Weekly Summary](#) Friday, October 02, 2020
- [Recent Increase in COVID-19 Cases Reported Among Adults Aged 18-22 Years - United States, May 31-September 5, 2020](#) Thursday, October 01, 2020
- [Multiple COVID-19 Clusters on a University Campus - North Carolina, August 2020](#) Thursday, October 01, 2020
- [COVID-19 Trends Among School-Aged Children - United States, March 1-September 19, 2020](#) Thursday, October 01, 2020
- [Changing Age Distribution of the COVID-19 Pandemic - United States, May-August 2020](#) Thursday, October 01, 2020
- [Previous COVID-19 Forecasts: Cases](#) Thursday, October 01, 2020
- [COVID-19 Forecasts: Cases](#) Thursday, October 01, 2020
- [COVID-19 Electronic Laboratory Reporting Implementation by State](#) Thursday, October 01, 2020

## CDC Guidance Documents

<https://www.cdc.gov/coronavirus/2019-ncov/communication/guidance-list.html?Sort=Date%3A%3Adesc>

### [Guidance for Reopening Buildings After Prolonged Shutdown or Reduced Operation](#)

Ensure that your water system is safe to use after a prolonged shutdown to minimize the risk of Legionnaires' disease and other diseases associated with water.

Date: 9/21/20

Audience: [Community Settings](#), [Public Health Professionals](#)

### [Interim Laboratory Biosafety Guidelines for Handling and Processing Specimens Associated with Coronavirus Disease 2019 \(COVID-19\)](#)

General and specific biosafety guidelines for handling SARS-CoV-2 specimens.

Date: 9/18/20

Audience: [Laboratory](#)

### [Overview of Testing for SARS-CoV-2 \(COVID-19\)](#)

Summary of considerations and current CDC recommendations regarding SARS-CoV-2 testing.

Date: 9/17/20

Audience: [Health Departments](#), [Healthcare Professionals](#), [State and Local Government](#)

### [Guidance for Reopening Buildings After Prolonged Shutdown or Reduced Operation](#)

Ensure that your water system is safe to use after a prolonged shutdown to minimize the risk of Legionnaires' disease and other diseases associated with water.

Date: 9/17/20

Audience: [Community Settings](#), [Public Health Professionals](#)

### [COVID-19 Parental Resources Kit – Young Adulthood](#)

Young adults' social, emotional, or mental well-being may be impacted by the pandemic. Learn what you can do to help ensure their well-being.

Date: 9/16/20

Audience: [Colleges and Universities](#), [General Public](#)

### [COVID-19 Parental Resources Kit – Childhood](#)

Children's social, emotional, or mental well-being maybe impacted by the pandemic. Learn what you can do to help ensure their well-being.

Date: 9/15/20

Audience: [General Public](#)

### [Operational Considerations for Personal Protective Equipment in the Context of Global Supply Shortages for Coronavirus Disease 2019 \(COVID-19\) Pandemic: non-US Healthcare Settings](#)



# California Takes Action to Combat COVID-19

<https://www.gov.ca.gov/california-takes-action-to-combat-covid-19/>

## State Data

<https://covid19.ca.gov/>  
<https://update.covid19.ca.gov/#top>  
<https://www.cdph.ca.gov/Programs/CID/DCDC/Pages/Immunization/ncov2019.aspx#>

## New website and guidance “Safer Economy Blueprint”

<https://covid19.ca.gov/safer-economy>

## Statewide industry guidance to reduce risk

<https://covid19.ca.gov/industry-guidance/#top>  
<https://www.cdph.ca.gov/Programs/CID/DCDC/Pages/Guidance.aspx>

## Data models

<https://covid19.ca.gov/data-and-tools/>



Office of Governor  
**GAVIN NEWSOM**

Press Releases, Executive Orders, Media Advisories,  
Proclamations, and “On the Record” Column  
<https://www.gov.ca.gov/newsroom/>

## Update for October 5, 2020

As of October 5, California has 826,784 confirmed cases of COVID-19, resulting in 16,149 deaths. The number of COVID-related deaths increased by 0.2 percent from the previous day's total of 16,120.

Updated October 5, 2020, with data from October 4, 2020.

**Note:** Numbers do not represent true day-over-day change as these results include cases from prior to yesterday.





### California's county risk levels

|  |  |   |   |
|--|--|---|---|
| <b>WIDESPREAD</b>  | <b>SUBSTANTIAL</b>                                       | <b>MODERATE</b>   | <b>MINIMAL</b>  |
| Many non-essential indoor business operations are closed | Some non-essential indoor business operations are closed | Some indoor business operations are open with modifications | Most indoor business operations are open with modifications |

### Current tier assignments as of September 29, 2020

All data and tier assignments are updated weekly every Tuesday.

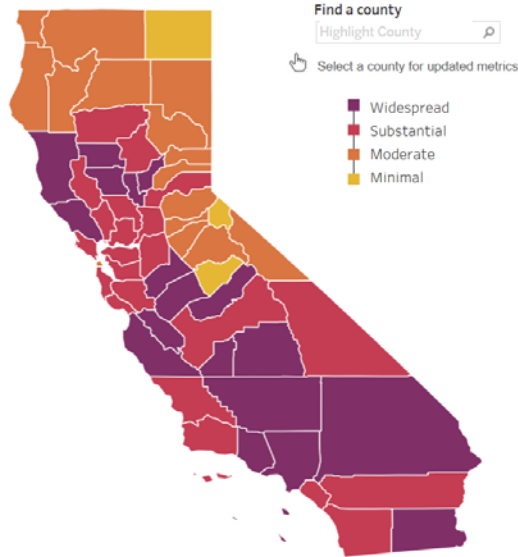
Statewide metrics

7.0

New COVID-19 positive cases per day per 100K

3.4%

Positivity rate



|  | Higher Risk <span style="font-size: 1.2em;">→</span> Lower Risk<br>of Community Disease Transmission |                       |                    |                   |
|--|--|-----------------------|--------------------|-------------------|
|  | Widespread<br>Tier 1   | Substantial<br>Tier 2 | Moderate<br>Tier 3 | Minimal<br>Tier 4 |
| <b>Measure*</b>  |  |                       |                    |                   |
| <b>Adjusted Case Rate for Tier Assignment**</b><br>(Rate per 100,000 excluding prison cases, 7 day average with 7 day lag) | >7   | 4-7                   | 1-3.9              | <1                |
| <b>Testing Positivity***</b><br>(Excluding prison cases, 7 day average with 7 day lag)                                     | >8%  | 5-8%                  | 2.4-9%             | <2%               |

**State Officials Announce Latest COVID-19 Facts**

October 5, 2020 - The California Department of Public Health (CDPH) today announced the most recent statistics on COVID-19.

**State Officials Announce Latest COVID-19 Facts**

October 4, 2020 - The California Department of Public Health (CDPH) today announced the most recent statistics on COVID-19.

**State Officials Announce Latest COVID-19 Facts**

October 3, 2020 - The California Department of Public Health (CDPH) today announced the most recent statistics on COVID-19.

**State Officials Announce Latest COVID-19 Facts**

October 2, 2020 - The California Department of Public Health (CDPH) today announced the most recent statistics on COVID-19.

**State Officials Announce Latest COVID-19 Facts**

October 1, 2020 - The California Department of Public Health (CDPH) today announced the most recent statistics on COVID-19.

**State Officials Announce Equity Metric to More Effectively Fight COVID-19**

*September 30, 2020 – The California Department of Public Health (CDPH) today released the details regarding a health equity metric to help guide counties in their continuing efforts to more effectively fight COVID-19.*

**State Officials Announce Latest COVID-19 Facts**

September 30, 2020 - The California Department of Public Health (CDPH) today announced the most recent statistics on COVID-19.

19.



# Riverside County Data

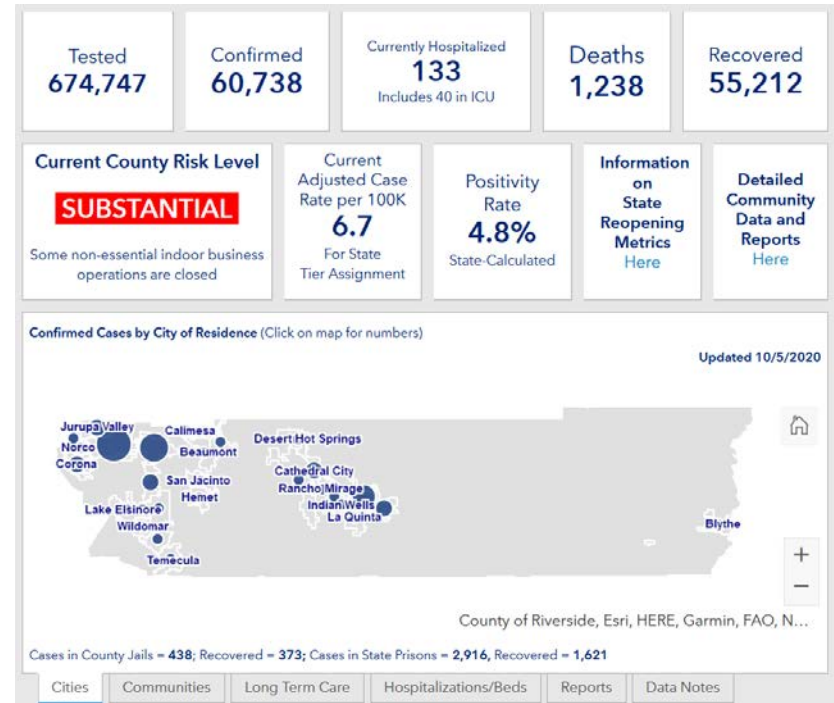
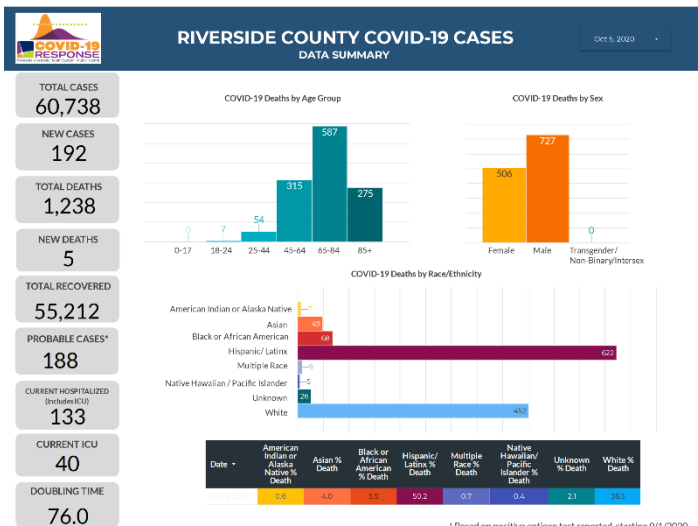
## RUHS Public Health News:

- [Rental Assistance Pop-Up Event in Hemet on Oct. 7](#) - October 5, 2020
- Riverside County enters state's red tier, more businesses resume indoor operations [English](#) / [Spanish](#) - September 23, 2020
- [Third round of business assistance grant applications to open Sept. 16 with expanded eligibility](#) - September 14, 2020
- More residents needed for COVID testing to slow the spread, move into red tier [English](#) / [Spanish](#) - September 10, 2020
- Riverside County health officials urge residents to take precautions because of smoke, ash from fires [English](#) / [Spanish](#) - September 8, 2020
- [Continue coronavirus safety measures during holiday weekend](#) - September 3, 2020


Dashboard -Click [here](#) for more detailed city/community data and reports

## Daily Epidemiology Summary updated 10-05-2020

[https://www.rivcoph.org/Portals/0/Documents/CoronaVirus/October/Dashboard/Public%20Daily\\_COVID-19\\_Updates%2010.05.20.pdf?ver=2020-10-05-151442-420&timestamp=1601936105261](https://www.rivcoph.org/Portals/0/Documents/CoronaVirus/October/Dashboard/Public%20Daily_COVID-19_Updates%2010.05.20.pdf?ver=2020-10-05-151442-420&timestamp=1601936105261)



# Weather



|  National Weather Service<br>San Diego, California |               | <b>Weather Threats Outlook</b><br>11 AM PDT Monday, October 5, 2020 |           |           |          |          |           |                    |
|---|---------------|---|-----------|-----------|----------|----------|-----------|--------------------|
| County  | Zone          | Mon 10/5  | Tue 10/6  | Wed 10/7  | Thu 10/8 | Fri 10/9 | Sat 10/10 | Sun 10/11          |
| San Diego   | Beach/Marine  | Dense Fog   | Dense Fog | None      | None     | None     | None      | None               |
|   | Coast         | Warm  | None      | None      | None     | None     | None      | None               |
|   | Valleys       | Very Warm   | Warm      | None      | None     | None     | None      | None               |
|   | Mountains     | Very Warm<br>Fire Weather   | Warm      | Warm      | Breezy   | Breezy   | Windy     | Breezy             |
|   | Deserts       | Very Warm   | Very Warm | Very Warm | Warm     | None     | Windy     | None               |
| Orange  | Beach         | Dense Fog   | Dense Fog | None      | None     | None     | None      | None               |
|   | Coast         | Warm  | None      | None      | None     | None     | None      | None               |
|   | Inland        | Warm  | Warm      | None      | None     | None     | None      | None               |
|   | Mountains     | Warm<br>Fire Weather  | None      | None      | None     | None     | None      | None               |
| Riverside   | Inland Empire | Very Warm   | Warm      | Warm      | None     | None     | None      | None               |
|   | Mountains     | Very Warm<br>Fire Weather   | Warm      | Warm      | Breezy   | Breezy   | Windy     | Breezy             |
|   | Desert        | Very Warm   | Very Warm | Very Warm | Warm     | None     | Windy     | None               |
| San Bernardino  | Inland Empire | Very Warm   | Warm      | Warm      | None     | None     | None      | None               |
|   | Mountains     | Warm<br>Fire Weather  | Warm      | Warm      | Breezy   | Breezy   | Windy     | Breezy<br>Offshore |
|   | Desert        | Very Warm   | Very Warm | Very Warm | Warm     | None     | Windy     | Breezy<br>Offshore |
|   |               | Impact Threat Levels  | None      | Low       | Medium   | High     | Extreme   |                    |

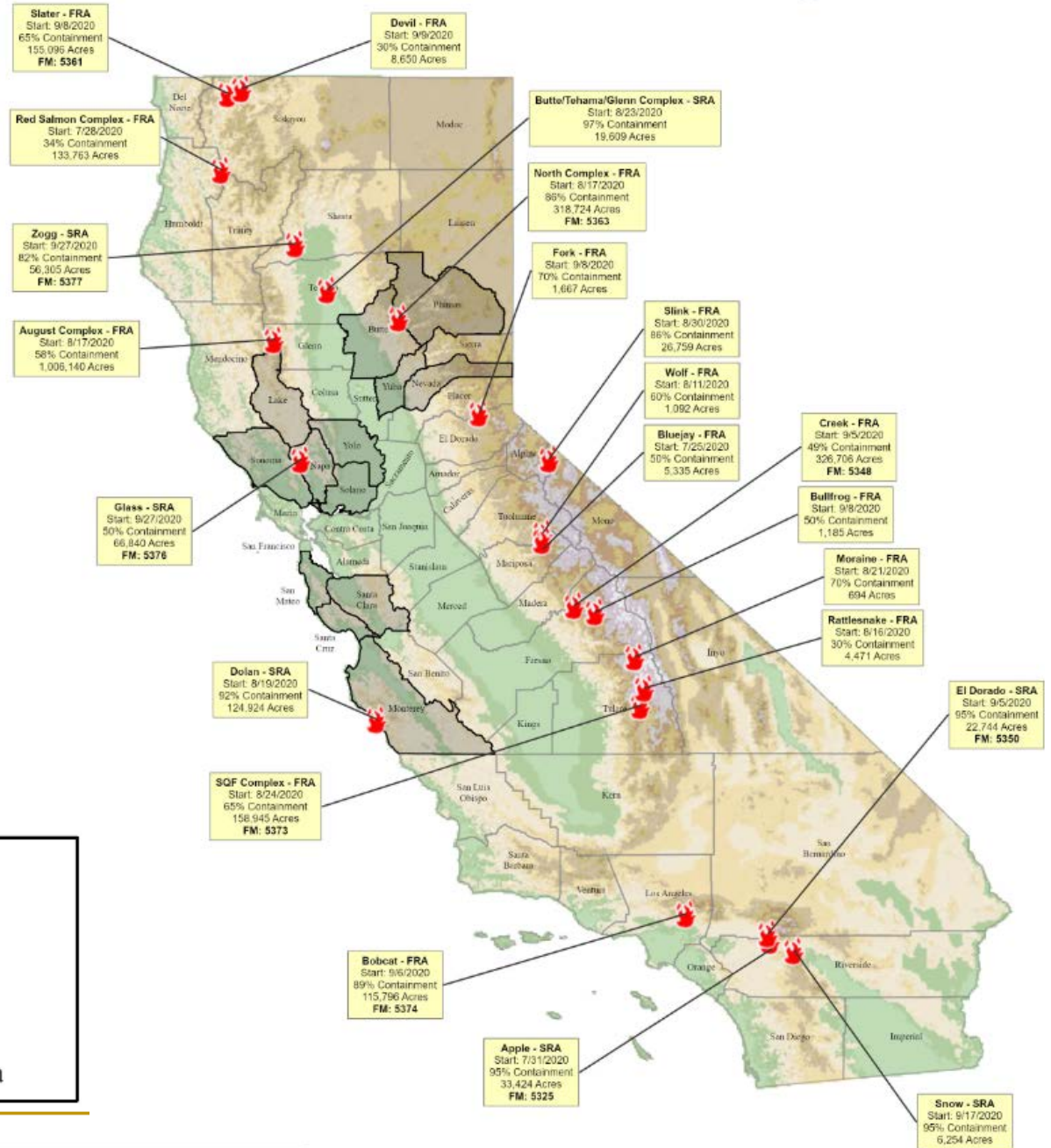
Latest hazard threat table: <https://www.wrh.noaa.gov/sqx/event/dsstable.php>

<https://www.weather.gov/forecastpoints#>

# Wildfire

<https://fam.nwcg.gov/fam-web/>

 **Active Fire (22)**  
 **DR-4558 Counties**  
**LRA - Local Responsibility Area**  
**SRA - State Responsibility Area**  
**FRA - Federal Responsibility Area**



<https://www.latimes.com/wildfires-map/>

# California wildfires map

The most recent fire is the **Candy** fire, which started on Sept. 29. It is 0% contained and has burned 227 acres so far.

The largest active fire is the **August Complex** fire, which has burned 938,044 acres so far. It started on Aug. 16 and is 43% contained.



About this map

## 34 California fires

**August Complex** CA  
 938,044 acres burned  
 Burning for 45 days  
 Includes 5 fires  
 43% contained

**Scu Lightning Complex** CA  
 396,624 acres burned  
 Burning for 43 days  
 Includes 3 fires  
 98%

**Lnu Lightning Complex** CA  
 363,220 acres burned  
 Burning for 44 days  
 98%

**North Complex** CA  
 314,043 acres burned  
 Burning for 43 days  
 Includes 23 fires  
 76%

**Claremont-bear** CA  
 314,042 acres burned  
 Burning for 44 days

