



Daily Situation Summary

Monday, October 5, 2020

As of 10:00 AM

COVID-19 by the Numbers

10/5/2020	Riverside	Imperial*	Kern	Los Angeles	Orange	San Bernardino	San Diego	San Luis Obispo	Santa Barbara	Ventura	California	United States	Global
Total Cases	59,991	11,090	31,864	271,869	53,573	55,004	48,202	3,670	9,256	13,150	823,729	7,359,952	35,109,317
New Cases	318	66	74	934	274	391	409	16	22	30	4,293	49,327	294,763
Total Cases Per Capita	2,517	6,154	3,608	2,692	1,693	2,576	1,459	1,304	2,086	1,551	2,104	2,228	457
New Cases Per Capita	13	37	8	9	9	18	12	6	5	4	11	15	4
Recovered	54,736	11,447	16,405	Not Reported	48,870	53,299	43,774	3,450	8,966	12,070	425,904	4,861,120	26,706,285
Total Deaths	1,231	326	386	6,642	1,286	962	798	31	115	153	16,120	208,821	1,035,341
New Deaths	0	3	5	16	5	0	4	0	0	0	46	703	4,526
Deaths Per Capita	51.65	180.89	43.71	65.78	40.64	45.05	24.16	11.01	25.92	18.04	41.18	63.21	13.47
Presumptive active cases	4,024	-683	15,073		3,417	743	3,630	189	175	927	381,705	2,290,011	7,367,691
% of State's Cases	7.28%	1.35%	3.87%	33.00%	6.50%	6.68%	5.85%	0.45%	1.12%	1.60%	11.19%	20.96%	
Currently in Hospitals	202	27	67	1,027	207	224	267	2	24	49	3,129		
Total Hospital Beds	3,320	259	1,316	19,912	5,860	3,808	6,770	451	666	1,253	66,920		
Currently in ICU	43	7	17	188	47	43	68	0	5	15	664		
ICU Beds Available	112	6	69	988	241	164	296	30	44	51	2,840		
Case Fatality Rate	2.1%	2.9%	1.2%	2.4%	2.4%	1.7%	1.7%	0.8%	1.2%	1.2%	2.0%	2.8%	2.9%
Population*	2,383,286	180,216	883,053	10,098,052	3,164,182	2,135,413	3,302,833	281,455	443,738	848,112	39,148,760	330,368,050	7,685,133,000
% of Population	6.09%	0.46%	2.26%	25.79%	8.08%	5.45%	8.44%	0.72%	1.13%	2.17%	0.25%	0.0958%	

Sources: CDPH, WHO, CDC

The date for which case statistics and hospital data were reported. Hospital COVID data are self-reported through a portal managed by the California Hospital Association and pulled at 2pm. COVID case statistics are reported by local health departments to CalREDIE and are pulled at 2pm. Hospital data and case statistics are integrated by the California Department of Technology and made available through the Open Data Portal the following morning. CA Open Data Portal is at least 24 Hours behind although a backlog of new case reports at the State level has ostensibly been cleared, some County dashboards still contain notes that indicate data are missing. *California-Demographics.com made by Cubit - a demographic data provider & census.gov

Presumptive active cases - A calculation (Total Cases - Recovered - Dead) (LA County does not report recovery rates and *Imperial County case data reporting is delayed to the state data source)

Information

More detail on page 2

News

More detail on page 3

US Data

More detail on page 4

State Data

More detail on page 8

Riverside County Data

More detail on page 11

Weather

More detail on page 12

Wildfire

More detail on page 13

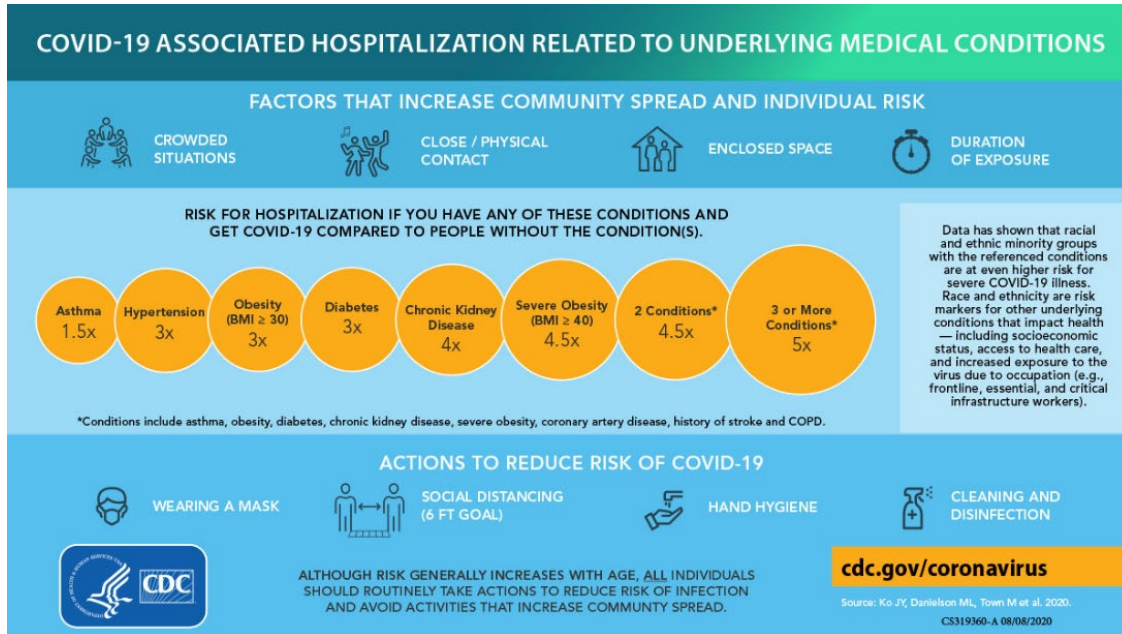
Information - What are your chances of catching the Coronavirus

People Who Need Extra Precautions

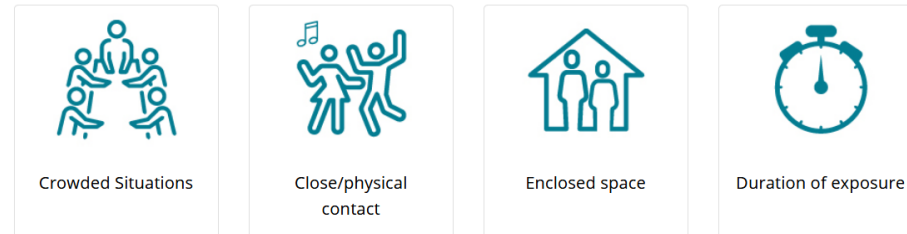
https://www.cdc.gov/coronavirus/2019-ncov/need-extra-precautions/index.html?CDC_AA_refVal=https%3A%2F%2Fwww.cdc.gov%2Fcoronavirus%2F2019-ncov%2Fneed-extra-precautions%2Fpeople-at-increased-risk.html

COVID-19 Associated Hospitalization Related to Underlying Medical Conditions

<https://www.cdc.gov/coronavirus/2019-ncov/covid-data/investigations-discovery/hospitalization-underlying-medical-conditions.html>



Factors that increase community spread and individual risk

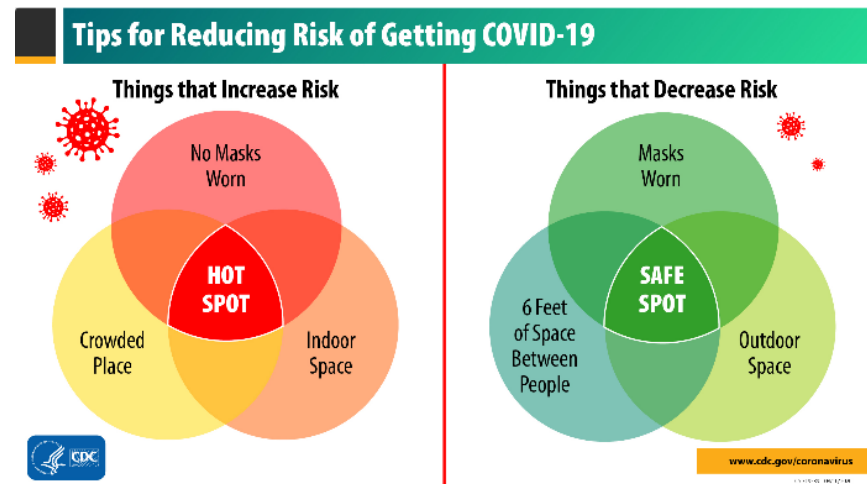


Actions to reduce risk of COVID-19



Deciding to Go Out

<https://www.cdc.gov/coronavirus/2019-ncov/daily-life-coping/deciding-to-go-out.html>



News – The collection of news articles is related to COVID-19. The inclusion or order of articles is not intended to reflect their importance, nor is it intended to endorse the political viewpoints or affiliations included in news coverage.

China's Sinovac expects interim final-stage trial data on coronavirus vaccine this year

<https://www.reuters.com/article/us-health-coronavirus-vaccine-sinovac/chinas-sinovac-expects-interim-final-stage-trial-data-on-coronavirus-vaccine-this-year-idUSKCN26F1LZ>

A blessing in disguise': COVID gives boost to Portugal's bicycle makers

<https://www.reuters.com/article/us-health-coronavirus-portugal-bicycles/a-blessing-in-disguise-covid-gives-boost-to-portugals-bicycle-makers-idUSKBN26Q1FI>

Violence mounts against Iraqi doctors as COVID cases spike

<https://www.reuters.com/article/us-health-coronavirus-iraq-healthcare/violence-mounts-against-iraqi-doctors-as-covid-cases-spike-idUSKCN26E1SR>

First fighting, then COVID-19 leave Colombian forest tribe homeless

<https://www.reuters.com/article/us-health-coronavirus-colombia-indigenou/first-fighting-then-covid-19-leave-colombian-forest-tribe-homeless-idUSKBN2681OK>

New Zealand "beat the virus again," PM Jacinda Ardern says

<https://www.axios.com/-9290fb75-dff5-43d2-8f9a-3203813e5a29.html>

With classroom time reduced, U.S. college students demand tuition cuts

<https://www.reuters.com/article/us-health-coronavirus-students-tuition/with-classroom-time-reduced-u-s-college-students-demand-tuition-cuts-idUSKBN2610FU>

COVID-19 Can Damage Hearts of Some College Athletes

<https://directorsblog.nih.gov/2020/10/01/covid-19-can-damage-hearts-of-some-college-athletes/>

Trump's use of Regeneron's experimental coronavirus treatment creates 'very tough situation,' CEO says

<https://www.cnbc.com/2020/10/05/trumps-use-of-regenerons-experimental-coronavirus-treatment-creates-very-tough-situation-ceo-says.html>

RELATED

White House press secretary Kayleigh McEnany tested positive for COVID-19

<https://thehill.com/homenews/administration/519632-mcenany-tests-positive-for-covid-19>

RELATED

Fauci breaks down Covid-19 timeline from exposure to symptoms

<https://www.cnn.com/videos/health/2020/10/05/fauci-intv-coronavirus-timeline-exposure-to-symptoms-trump-newday-vpx.cnn>

One Good Thing

- Stories about the kindness of strangers and individuals who sacrifice for others.
<https://apnews.com/OneGoodThing> & <https://www.goodnewsnetwork.org/>



U.S. Data Whole-of-America Response

Medical Supplies and Equipment

- As of Sept. 27, FEMA, HHS and the private sector coordinated delivery of or are currently shipping: 249 million N95 masks, 1.1 billion surgical and procedural masks, 46.7 million eye and face shields, 432 million gowns and coveralls and over 28.6 billion gloves.
- As of Aug. 7, FEMA delivered 30,458 medical supplies to nursing homes to 52 states and territories. One hundred percent of scheduled shipments have been made.
- [FEMA coordinated two shipments](#) totaling a 14-day supply of personal protective equipment to all 15,400 Medicaid and Medicare-certified nursing homes.
- Shipments are meant to supplement existing efforts to provide equipment to nursing homes.
- In support of the Department of Veterans Affairs, FEMA coordinated shipments of more than 8.1 million N95 respirator masks, 500,000 surgical masks, more than 3.3 million gloves, 595,360 face shields and 30,000 surgical gowns to facilities across the country.
- As of Oct. 1, the federal government has approximately [143,973](#) total ventilators available in the Strategic National Stockpile.
- To date, FEMA, HHS and the Department of Homeland Security (DHS) Cybersecurity Infrastructure and Security Agency (CISA), along with other federal agencies, processed and distributed nearly 350 million cloth face coverings.
- Nearly 150 million of those went to critical infrastructure workers, others went to State, Tribal, Territorial, Voluntary Organizations Active in Disasters (VOAD) partners/stakeholders and other government partners.

Testing

- As of Oct. 1, CDC, state, local public health labs and other laboratories have tested more than [114.4 million](#) samples.
- As of Oct. 1, the FDA issued 265 individual [emergency use authorizations](#) for test kit manufacturers and laboratories, including [51](#) antibody tests and 4 antigen tests.
- As of July 31, all 41 original Community-Based Testing Sites have transitioned to state management (29) or have closed (12) in consultation with the states.
- As of Aug. 4, 398,300 samples were collected at federally supported [Community-Based Testing Sites](#).
- HHS has established a public-private partnership with pharmacy and retail companies to accelerate testing.
- As of Sept. 29, under the CBTS public-private partnership, there are currently [1,268](#) live sites in 48 states and Washington, D.C., are conducting testing.
- Over [2.4 million](#) samples were processed at public-private partnership testing sites.

Federal Funding

- As of Oct. 1, all 50 states, five territories, the Seminole Tribe of Florida and Washington, D.C., were approved for major disaster declarations to assist with additional needs identified.

- As of Oct. 1, there are 89 tribes working directly with FEMA: 45 tribes that are direct recipients with emergency declarations and 44 tribes that are recipients under state declarations. One tribe, the Seminole Tribe of Florida (STOF) is, a direct recipient with a major disaster and an emergency declaration,
- A tribal government may choose to be a subrecipient under a state receiving FEMA assistance, or to choose to be a direct recipient of FEMA.
- As of Sept. 30, FEMA obligated over \$51.9 billion in support of COVID-19 efforts. This support includes:
 - Emergency Food and Shelter: \$200 million
 - Temporary Medical Facilities including medical personnel, mortuary and ambulance services: \$2 billion
 - PPE including medical supplies and pharmaceuticals: \$2.9 billion
 - National Guard: \$2.2 billion
 - Public Assistance Emergency Protective Measures (Non-PPE): \$1.9 billion
 - Commodities: \$38 million
 - Crisis Counseling: \$282 million
- On August 8, 2020, President Trump made available up to \$44 billion from FEMA's Disaster Relief Fund to provide financial assistance to Americans who have lost wages due to the COVID-19 pandemic. To learn more about FEMA's lost wages supplemental payment assistance, visit: <https://www.fema.gov/fact-sheet/fema-lost-wages-supplemental-payment-assistance>.
- Over \$42 billion made available to 49 states and two territories, and Washington, D.C. through the Lost Wages Assistance program (see attachment)

Additional Federal Support

- As of Oct. 2, FEMA has 1,279 employees supporting COVID-19 pandemic response out of a total 20,831 agency employees ready to respond to other emergencies should they occur.
- To date, the president has approved 49 National Guard requests for federal support for the use of National Guard personnel in a Title 32 duty status through Dec. 31.
 - As of Oct. 1, 16,178 National Guard troops have activated in T-32 duty status and 392 troops have activated in State Active Duty status to help with testing and other response efforts.
- As of Oct. 2, 7,190 CDC personnel are supporting the outbreak response.
- As of Oct. 1, HHS has 139 personnel supporting the outbreak response.
- As of Oct. 2, 116 agencies across 30 states, the District of Columbia, three tribes and one U.S. territory have used FEMA's Integrated Public Alert and Warning System (IPAWS) to send a total of 427 alerts containing information on COVID-19 to cell phones and other wireless devices via the Wireless Emergency Alert system, and 90 alerts to radios/televisions via Emergency Alert System.

CDC Guidance Documents

<https://www.cdc.gov/coronavirus/2019-ncov/communication/guidance-list.html?Sort=Date%3A%3Adesc>

[Guidance for Reopening Buildings After Prolonged Shutdown or Reduced Operation](#)

Ensure that your water system is safe to use after a prolonged shutdown to minimize the risk of Legionnaires' disease and other diseases associated with water.

Date: 9/21/20

Audience: [Community Settings](#), [Public Health Professionals](#)

[Interim Laboratory Biosafety Guidelines for Handling and Processing Specimens Associated with Coronavirus Disease 2019 \(COVID-19\)](#)

General and specific biosafety guidelines for handling SARS-CoV-2 specimens.

Date: 9/18/20

Audience: [Laboratory](#)

[Overview of Testing for SARS-CoV-2 \(COVID-19\)](#)

Summary of considerations and current CDC recommendations regarding SARS-CoV-2 testing.

Date: 9/17/20

Audience: [Health Departments](#), [Healthcare Professionals](#), [State and Local Government](#)

[Guidance for Reopening Buildings After Prolonged Shutdown or Reduced Operation](#)

Ensure that your water system is safe to use after a prolonged shutdown to minimize the risk of Legionnaires' disease and other diseases associated with water.

Date: 9/17/20

Audience: [Community Settings](#), [Public Health Professionals](#)

[COVID-19 Parental Resources Kit – Young Adulthood](#)

Young adults' social, emotional, or mental well-being may be impacted by the pandemic. Learn what you can do to help ensure their well-being.

Date: 9/16/20

Audience: [Colleges and Universities](#), [General Public](#)

[COVID-19 Parental Resources Kit – Childhood](#)

Children's social, emotional, or mental well-being maybe impacted by the pandemic. Learn what you can do to help ensure their well-being.

Date: 9/15/20

Audience: [General Public](#)

[Operational Considerations for Personal Protective Equipment in the Context of Global Supply Shortages for Coronavirus Disease 2019 \(COVID-19\) Pandemic: non-US Healthcare Settings](#)

Considerations for personal protective equipment (PPE) in the context of global supply shortages in non-US healthcare settings.

Date: 9/14/20

Audience: [Healthcare Facilities](#), [Healthcare Professionals](#)

[Guidance for General Population Disaster Shelters During a Pandemic](#)

Date: 9/14/20

Audience: [Colleges and Universities](#), [First Responders](#), [Healthcare Facilities](#), [Healthcare Professionals](#), [High-Risk Populations](#), [Public Health Professionals](#), [Schools](#), [State and Local Government](#)

[Interim Operational Considerations for Public Health Management of Healthcare Workers Exposed to or with Suspected or Confirmed COVID-19: non-U.S. Healthcare Settings](#)

These recommendations are intended to be used by healthcare facilities and public health authorities in non-US healthcare settings, particularly focusing on low- and middle-income countries, assisting with the management of HCWs exposed to a person with confirmed or suspected COVID-19.

Date: 9/11/20

Audience: [Healthcare Facilities](#), [Healthcare Professionals](#)

[Know When to Delay your Travel to Avoid Spreading COVID-19](#)

Advice on when and how long people should delay their domestic or international travel to avoid spreading COVID-19.

Date: 9/10/20

Audience: [Travel](#)

[Additional COVID-19 Guidance for Caregivers of People Living with Dementia in Community Settings](#)

People caring for loved ones with dementia can take steps to prevent illness and stay healthy during the COVID-19 pandemic.

Date: 9/10/20

Audience: [High-Risk Populations](#)

[Implementing Safety Practices for Critical Infrastructure Workers Who May Have Had Exposure to a Person with Suspected or Confirmed COVID-19](#)

Find CDC's guidance for critical workers on how to protect workers who may have been exposed to COVID-19.

Date: 9/10/20

Audience: [Businesses](#)



California Takes Action to Combat COVID-19

<https://www.gov.ca.gov/california-takes-action-to-combat-covid-19/>

State Data

<https://covid19.ca.gov/>
<https://update.covid19.ca.gov/#top>
<https://www.cdph.ca.gov/Programs/CID/DCDC/Pages/Immunization/ncov2019.aspx#>

New website and guidance “Safer Economy Blueprint”

<https://covid19.ca.gov/safer-economy>

Statewide industry guidance to reduce risk

<https://covid19.ca.gov/industry-guidance/#top>
<https://www.cdph.ca.gov/Programs/CID/DCDC/Pages/Guidance.aspx>

Data models

<https://covid19.ca.gov/data-and-tools/>



Office of Governor
GAVIN NEWSOM

Press Releases, Executive Orders, Media Advisories,
Proclamations, and “On the Record” Column

<https://www.gov.ca.gov/newsroom/>

Tracking COVID-19

In California, Updated October 4, 2020 at 11:00 AM with data
from October 3, 2020

Cases

823,729

+0.5%

Deaths

16,120

+ 0.3%

Tests

15,160,287

California's county risk levels

<p>WIDESPREAD</p> <p>Many non-essential indoor business operations are closed</p>	<p>SUBSTANTIAL</p> <p>Some non-essential indoor business operations are closed</p>	<p>MODERATE</p> <p>Some indoor business operations are open with modifications</p>	<p>MINIMAL</p> <p>Most indoor business operations are open with modifications</p>
--	---	---	--

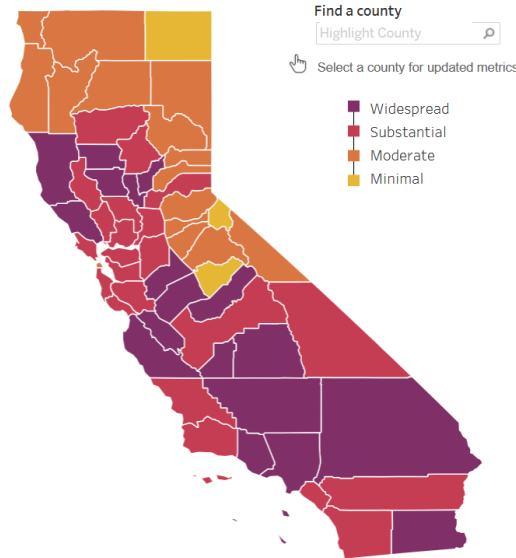
Current tier assignments as of September 29, 2020

All data and tier assignments are updated weekly every Tuesday.

Statewide metrics

7.0
New COVID-19 positive cases per day per 100K

3.4%
Positivity rate



Higher Risk → Lower Risk of Community Disease Transmission				
	Widespread Tier 1	Substantial Tier 2	Moderate Tier 3	Minimal Tier 4
Measure*				
Adjusted Case Rate for Tier Assignment** (Rate per 100,000 excluding prison cases, 7 day average with 7 day lag)	>7	4-7	1-3.9	<1
Testing Positivity*** (Excluding prison cases, 7 day average with 7 day lag)	>8%	5-8%	2.4-9%	<2%

State Officials Announce Latest COVID-19 Facts

October 4, 2020 - The California Department of Public Health (CDPH) today announced the most recent statistics on COVID-19.

State Officials Announce Latest COVID-19 Facts

October 3, 2020 - The California Department of Public Health (CDPH) today announced the most recent statistics on COVID-19.

State Officials Announce Latest COVID-19 Facts

October 2, 2020 - The California Department of Public Health (CDPH) today announced the most recent statistics on COVID-19.

State Officials Announce Latest COVID-19 Facts

October 1, 2020 - The California Department of Public Health (CDPH) today announced the most recent statistics on COVID-19.

State Officials Announce Equity Metric to More Effectively Fight COVID-19

September 30, 2020 – The California Department of Public Health (CDPH) today released the details regarding a health equity metric to help guide counties in their continuing efforts to more effectively fight COVID-19.

State Officials Announce Latest COVID-19 Facts

September 30, 2020 - The California Department of Public Health (CDPH) today announced the most recent statistics on COVID-19.

State Officials Announce Latest COVID-19 Facts

September 29, 2020 - The California Department of Public Health (CDPH) today announced the most recent statistics on COVID-19.



Riverside County Data

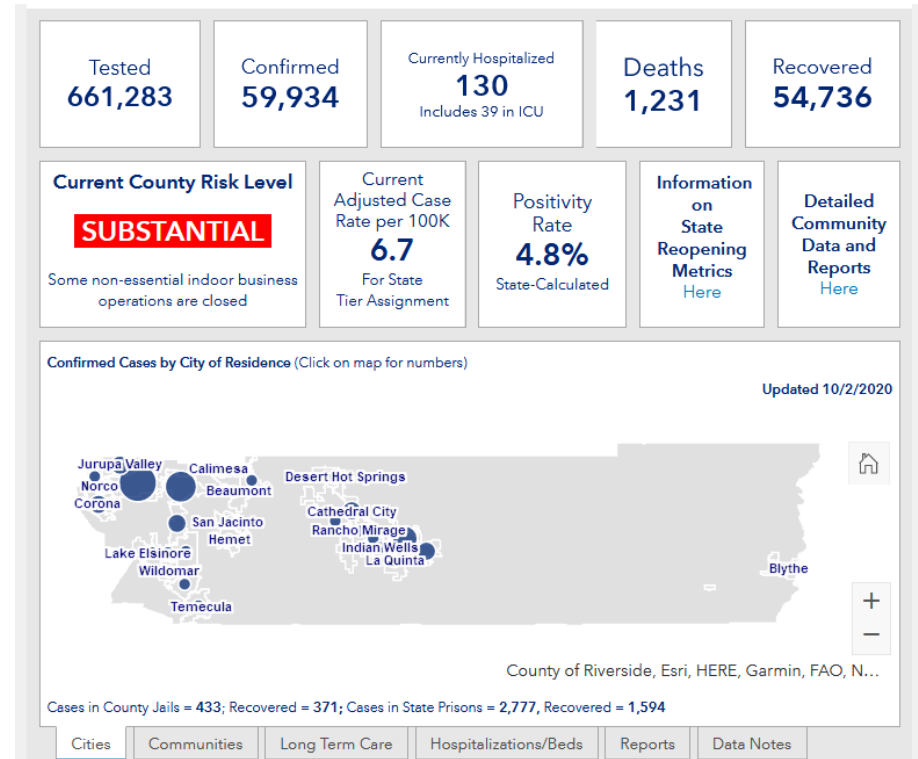
RUHS Public Health News:

- Riverside County enters state’s red tier, more businesses resume indoor operations [English](#) / [Spanish](#) - September 23, 2020
- [Third round of business assistance grant applications to open Sept. 16 with expanded eligibility](#) - September 14, 2020
- More residents needed for COVID testing to slow the spread, move into red tier [English](#) / [Spanish](#) - September 10, 2020
- Riverside County health officials urge residents to take precautions because of smoke, ash from fires [English](#) / [Spanish](#) - September 8, 2020
- [Continue coronavirus safety measures during holiday weekend](#) - September 3, 2020
- Cool centers open during heatwave, COVID testing sites to close for the weekend [English](#) / [Spanish](#) - September 3, 2020
- Riverside County reports first flu-related death of 2020-21 influenza season [English](#) / [Spanish](#) - September 2, 2020
- [Riverside County Takes Action to Address Suicide, Celebrate Recovery](#) - September 1, 2020
- Slow the spread through social media and creative arts challenges [English](#) / [Spanish](#) - September 1, 2020
- Health officials report first case of MIS-C in child from western Riverside County [English](#) / [Spanish](#) - September 1, 2020
- [Adjusting Permitted Sector Activities](#) - August 31, 2020


Dashboard -Click [here](#) for more detailed city/community data and reports

Daily Epidemiology Summary updated 10-02-2020

https://www.rivcoph.org/Portals/0/Documents/CoronaVirus/October/Dashboard/1/External_Daily_COVID-19_Updates.pdf?ver=2020-10-02-131225-760×tamp=1601669582432



Weather

 National Weather Service San Diego, California		Weather Threats Outlook 11 AM PDT Sunday, October 4, 2020						
County	Zone	Sun 10/4	Mon 10/5	Tue 10/6	Wed 10/7	Thu 10/8	Fri 10/9	Sat 10/10
San Diego	Beach/Marine	None	Dense Fog	None	None	None	None	None
	Coast	Warm	Warm	None	None	None	None	None
	Valleys	Very Warm	Very Warm	Warm	None	None	None	None
	Mountains	Very Warm Fire Weather	Very Warm Fire Weather	Warm	Warm	Breezy	Breezy	Breezy
	Deserts	Very Warm	Very Warm	Very Warm	Very Warm	Very Warm	Warm	Breezy
Orange	Beach	None	Dense Fog	None	None	None	None	None
	Coast	Warm	Warm	None	None	None	None	None
	Inland	Warm	Warm	Warm	None	None	None	None
	Mountains	Warm Fire Weather	Warm Fire Weather	None	None	None	None	None
Riverside	Inland Empire	Very Warm	Very Warm	Warm	Warm	None	None	None
	Mountains	Very Warm Fire Weather	Very Warm Fire Weather	Warm	Warm	Breezy	Breezy	Breezy
	Desert	Very Warm	Very Warm	Very Warm	Very Warm	Very Warm	Warm	Breezy
San Bernardino	Inland Empire	Very Warm	Very Warm	Warm	Warm	None	None	None
	Mountains	Warm Fire Weather	Warm Fire Weather	Warm	Warm	Breezy	Breezy	Breezy
	Desert	Very Warm	Very Warm	Very Warm	Very Warm	Warm	Warm	Breezy

Impact Threat Levels	None	Low	Medium	High	Extreme
----------------------	------	-----	--------	------	---------

Latest hazard threat table: <https://www.wrh.noaa.gov/sqx/event/dsstable.php>

<https://www.weather.gov/forecastpoints#>

Wildfire

California Statewide Fire Summary October 5, 2020 - More than 4 million acres have now burned

https://fire.ca.gov/daily-wildfire-report/?utm_source=CalMatters+Newsletters&utm_campaign=6dcd38d241-WHATMATTERS_NEWSLETTER&utm_medium=email&utm_term=0_faa7be558d-6dcd38d241-150648140&mc_cid=6dcd38d241&mc_eid=d92ddf8032

<https://www.latimes.com/wildfires-map/>

