



****Extraordinary Assumptions:** There are a lot of different data sources in this report not all of them match but aid to provide an overall picture of the current situation. **COVID-19 Data Source Comparison** - https://covid-19.splunkforgood.com/covid_19_datasource_comparison

Daily Situation Summary

Tuesday, September 29, 2020

As of 10:00 AM

COVID-19 by the Numbers

09/29/2020	Riverside	Imperial*	Kern	Los Angeles	Orange	San Bernardino	San Diego	San Luis Obispo	Santa Barbara	Ventura	California	United States	Global
Total Cases	58,509	10,743	31,462	267,754	52,458	53,127	46,612	3,562	9,090	12,775	805,263	7,129,313	33,249,563
New Cases	433	22	52	823	255	5	279	16	29	46	2,955	33,891	222,748
Total Cases Per Capita	2,455	5,961	3,563	2,652	1,658	2,488	1,411	1,266	2,049	1,506	2,057	2,158	433
New Cases Per Capita	18	12	6	8	8	0	8	6	7	5	8	10	3
Recovered	53,930	11,285	16,068	Not Reported	47,955	52,077	42,111	3,331	8,850	11,797	415,169	4,628,842	24,989,521
Total Deaths	1,189	317	369	6,514	1,216	925	776	29	113	150	15,608	204,598	1,000,040
New Deaths	0	0	0	10	2	0	1	0	0	0	21	270	3,694
Deaths Per Capita	49.89	175.90	41.79	64.51	38.43	43.32	23.49	10.30	25.47	17.69	39.87	61.93	13.01
Presumptive active cases	3,390	-859	15,025		3,287	125	3,725	202	127	828	374,486	2,295,873	7,260,002
% of State's Cases	7.27%	1.33%	3.91%	33.25%	6.51%	6.60%	5.79%	0.44%	1.13%	1.59%	11.30%	21.44%	
Currently in Hospitals	182	22	74	1,025	240	223	257	3	27	53	3,223		
Total Hospital Beds	3,322	259	1,304	19,925	5,626	3,831	6,770	451	666	1,244	66,972		
Currently in ICU	33	8	14	207	46	48	68	1	6	14	693		
ICU Beds Available	110	4	68	1,043	239	173	338	29	56	62	2,995		
Case Fatality Rate	2.0%	3.0%	1.2%	2.4%	2.3%	1.7%	1.7%	0.8%	1.2%	1.2%	1.9%	2.9%	3.0%
Population*	2,383,286	180,216	883,053	10,098,052	3,164,182	2,135,413	3,302,833	281,455	443,738	848,112	39,148,760	330,368,050	7,685,133,000
% of Population	6.09%	0.46%	2.26%	25.79%	8.08%	5.45%	8.44%	0.72%	1.13%	2.17%	0.24%	0.0928%	

Sources: CDPH, WHO, CDC

The date for which case statistics and hospital data were reported. Hospital COVID data are self-reported through a portal managed by the California Hospital Association and pulled at 2pm. COVID case statistics are reported by local health departments to CalREDIE and are pulled at 2pm. Hospital data and case statistics are integrated by the California Department of Technology and made available through the Open Data Portal the following morning. CA Open Data Portal is at least 24 Hours behind although a backlog of new case reports at the State level has ostensibly been cleared, some County dashboards still contain notes that indicate data are missing. *California-Demographics.com made by Cubit - a demographic data provider & census.gov

Presumptive active cases - A calculation (Total Cases - Recovered - Dead) (LA County does not report recovery rates and *Imperial County case data reporting is delayed to the state data source)

Information and News

More detail on page 2

US Data

More detail on page 3

State Data

More detail on page 6

Riverside County Data

More detail on page 9

Weather

More detail on page 10

Wildfire

More detail on page 11

Information

Medical historian compares the coronavirus to the 1918 flu pandemic: Both were highly political

<https://www.cnbc.com/2020/09/28/comparing-1918-flu-vs-coronavirus.html>



News – The collection of news articles is related to COVID-19. The inclusion or order of articles is not intended to reflect their importance, nor is it intended to endorse the political viewpoints or affiliations included in news coverage.

More than 1 million people have died worldwide from Covid-19, and the United States accounts for more than 20% of the death toll.

<https://www.cnn.com/2020/09/29/health/us-coronavirus-tuesday/index.html>

Study Finds People Have Short-Lived Immunity to Seasonal Coronaviruses

<https://directorsblog.nih.gov/2020/09/29/study-finds-people-have-short-lived-immunity-to-seasonal-coronaviruses/>

The coronavirus has killed this many health care workers, according to country's largest nurses union

<https://www.foxnews.com/health/coronavirus-killed-this-many-health-care-workers-nurses-union>

Tennessee Titans, Minnesota Vikings close facilities after Titans players test positive for the coronavirus

https://www.espn.com/nfl/story/_/id/30001007/tennessee-titans-close-facility-multiple-players-test-positive-covid-19

One Good Thing

- Stories about the kindness of strangers and individuals who sacrifice for others.
<https://apnews.com/OneGoodThing> & <https://www.goodnewsnetwork.org/>



U.S. Data

https://covid.cdc.gov/covid-data-tracker/#compare-trends_newcases

Compare Trends in COVID-19 Cases and Deaths in States in the US Reported to CDC

USA
7,129,313
TOTAL CASES
 +33,891 New Cases
 CDC | Updated: Sep 29 2020 12:16PM

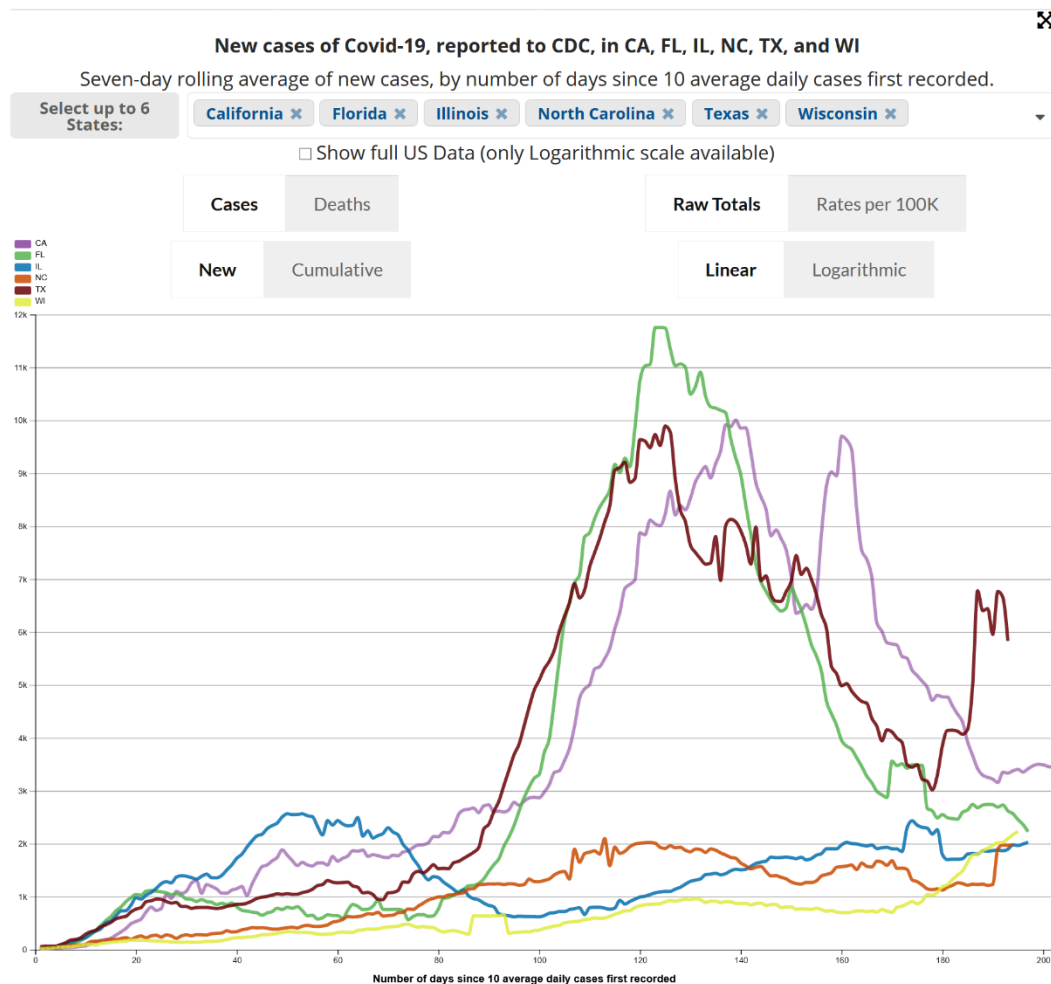
USA
204,598
TOTAL DEATHS
 +270 New Deaths
 CDC | Updated: Sep 29 2020 12:16PM

USA
2,154
Cases per 100,000
People
 CDC | Updated: Sep 29 2020 12:16PM

Seven-day rolling average of new cases

Day	CA	FL	IL	NC	TX	WI
1	16	17	13	17	52	14
2	17	25	20	21	66	21
3	19	39	37	30	65	28
4	25	51	55	31	64	37
5	29	68	79	51	93	50
6	36	93	103	63	127	51
7	37	114	136	77	179	52
8	44	142	168	89	190	68
9	63	168	196	85	220	78
10	68	223	225	101	292	90
11	108	279	302	150	338	101

CDC | Updated: Sep 29 2020 12:16PM



CDC Guidance Documents

<https://www.cdc.gov/coronavirus/2019-ncov/communication/guidance-list.html?Sort=Date%3A%3Adesc>

[Guidance for Reopening Buildings After Prolonged Shutdown or Reduced Operation](#)

Ensure that your water system is safe to use after a prolonged shutdown to minimize the risk of Legionnaires' disease and other diseases associated with water.

Date: 9/21/20

Audience: [Community Settings](#), [Public Health Professionals](#)

[Interim Laboratory Biosafety Guidelines for Handling and Processing Specimens Associated with Coronavirus Disease 2019 \(COVID-19\)](#)

General and specific biosafety guidelines for handling SARS-CoV-2 specimens.

Date: 9/18/20

Audience: [Laboratory](#)

[Overview of Testing for SARS-CoV-2 \(COVID-19\)](#)

Summary of considerations and current CDC recommendations regarding SARS-CoV-2 testing.

Date: 9/17/20

Audience: [Health Departments](#), [Healthcare Professionals](#), [State and Local Government](#)

[Guidance for Reopening Buildings After Prolonged Shutdown or Reduced Operation](#)

Ensure that your water system is safe to use after a prolonged shutdown to minimize the risk of Legionnaires' disease and other diseases associated with water.

Date: 9/17/20

Audience: [Community Settings](#), [Public Health Professionals](#)

[COVID-19 Parental Resources Kit – Young Adulthood](#)

Young adults' social, emotional, or mental well-being may be impacted by the pandemic. Learn what you can do to help ensure their well-being.

Date: 9/16/20

Audience: [Colleges and Universities](#), [General Public](#)

[COVID-19 Parental Resources Kit – Childhood](#)

Children's social, emotional, or mental well-being maybe impacted by the pandemic. Learn what you can do to help ensure their well-being.

Date: 9/15/20

Audience: [General Public](#)

[Operational Considerations for Personal Protective Equipment in the Context of Global Supply Shortages for Coronavirus Disease 2019 \(COVID-19\) Pandemic: non-US Healthcare Settings](#)

Considerations for personal protective equipment (PPE) in the context of global supply shortages in non-US healthcare settings.

Date: 9/14/20

Audience: [Healthcare Facilities](#), [Healthcare Professionals](#)

[Guidance for General Population Disaster Shelters During a Pandemic](#)

Date: 9/14/20

Audience: [Colleges and Universities](#), [First Responders](#), [Healthcare Facilities](#), [Healthcare Professionals](#), [High-Risk Populations](#), [Public Health Professionals](#), [Schools](#), [State and Local Government](#)

[Interim Operational Considerations for Public Health Management of Healthcare Workers Exposed to or with Suspected or Confirmed COVID-19: non-U.S. Healthcare Settings](#)

These recommendations are intended to be used by healthcare facilities and public health authorities in non-US healthcare settings, particularly focusing on low- and middle-income countries, assisting with the management of HCWs exposed to a person with confirmed or suspected COVID-19.

Date: 9/11/20

Audience: [Healthcare Facilities](#), [Healthcare Professionals](#)

[Know When to Delay your Travel to Avoid Spreading COVID-19](#)

Advice on when and how long people should delay their domestic or international travel to avoid spreading COVID-19.

Date: 9/10/20

Audience: [Travel](#)

[Additional COVID-19 Guidance for Caregivers of People Living with Dementia in Community Settings](#)

People caring for loved ones with dementia can take steps to prevent illness and stay healthy during the COVID-19 pandemic.

Date: 9/10/20

Audience: [High-Risk Populations](#)

[Implementing Safety Practices for Critical Infrastructure Workers Who May Have Had Exposure to a Person with Suspected or Confirmed COVID-19](#)

Find CDC's guidance for critical workers on how to protect workers who may have been exposed to COVID-19.

Date: 9/10/20

Audience: [Businesses](#)



California Takes Action to Combat COVID-19

<https://www.gov.ca.gov/california-takes-action-to-combat-covid-19/>

State Data

<https://covid19.ca.gov/>
<https://update.covid19.ca.gov/#top>
<https://www.cdph.ca.gov/Programs/CID/DCDC/Pages/Immunization/ncov2019.aspx#>

New website and guidance “Safer Economy Blueprint”

<https://covid19.ca.gov/safer-economy>

Statewide industry guidance to reduce risk

<https://covid19.ca.gov/industry-guidance/#top>
<https://www.cdph.ca.gov/Programs/CID/DCDC/Pages/Guidance.aspx>

Data models

<https://covid19.ca.gov/data-and-tools/>



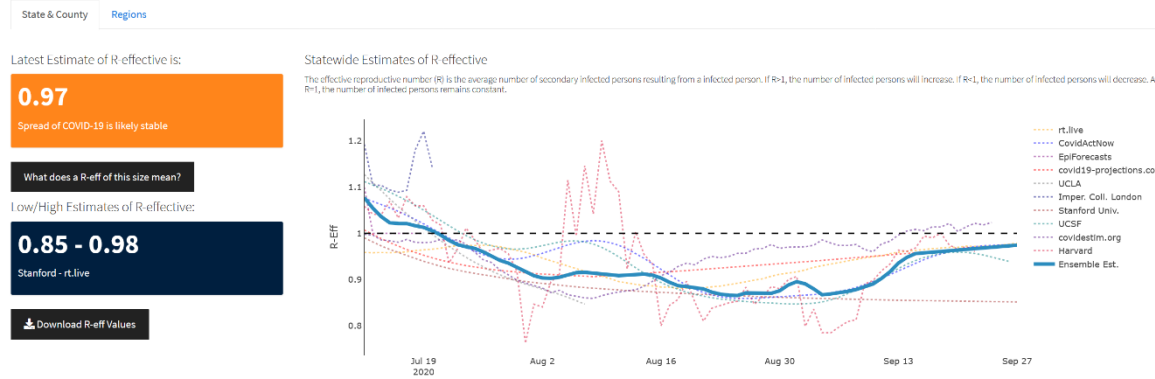
Office of Governor
GAVIN NEWSOM

Press Releases, Executive Orders, Media Advisories,
Proclamations, and “On the Record” Column

<https://www.gov.ca.gov/newsroom/>

Current R-effective in California

The effective reproduction number (R effective) is the average number of people each infected person will pass the virus onto and represents the rate at which COVID-19 is spreading.



Custom Regions

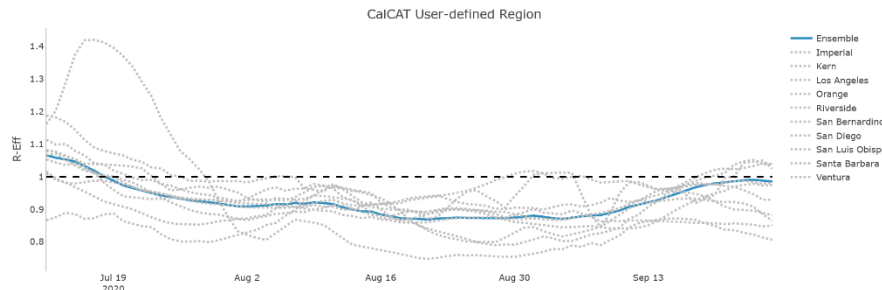
The custom regions panel allows users to customize regions by selecting multiple counties.
Note: Regional ensembles are population weighted means of the R effective for counties identified in the region.

Imperial, Kern, Los Angeles, Orange, Riv



Latest Estimate of R-effective is:

0.99
Spread of COVID-19 is likely stable



Tracking COVID-19

In California, Updated September 28, 2020 at 11:00 AM with data from September 27, 2020

Cases **805,263** +0.4%

Deaths **15,608** +0.1%

Tests **14,484,852**

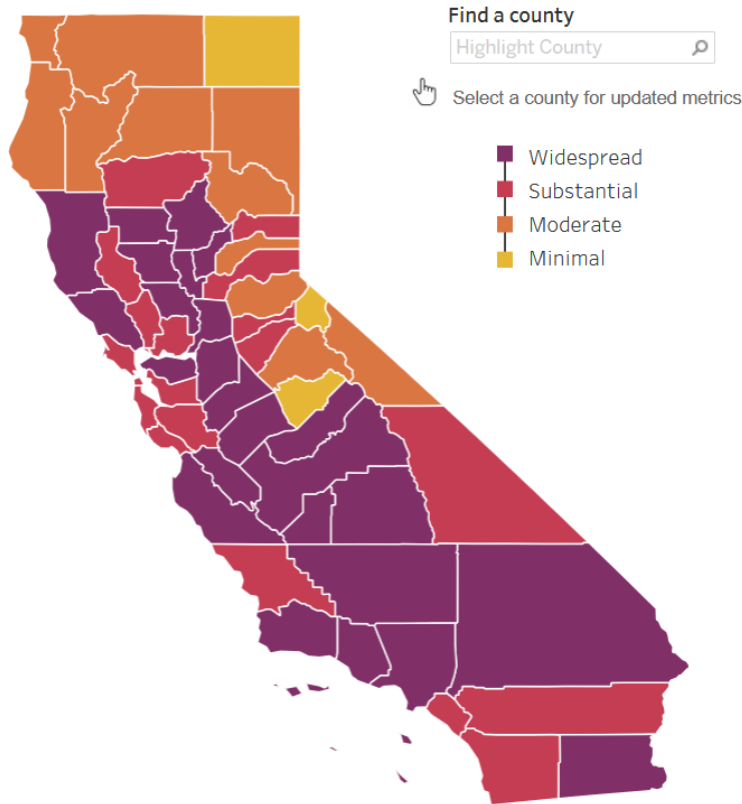
Statewide metrics

6.4

New COVID-19 positive cases per day per 100K

3.6%

Positivity rate



	Higher Risk → Lower Risk of Community Disease Transmission			
	Widespread Tier 1	Substantial Tier 2	Moderate Tier 3	Minimal Tier 4
Measure*				
Adjusted Case Rate for Tier Assignment** (Rate per 100,000 excluding prison cases, 7 day average with 7 day lag)	>7	4-7	1-3.9	<1
Testing Positivity*** (Excluding prison cases, 7 day average with 7 day lag)	>8%	5-8%	2.4-9%	<2%

[State Officials Announce Latest COVID-19 Facts](#)

September 28, 2020 - The California Department of Public Health (CDPH) today announced the most recent statistics on COVID-19.

[State Officials Announce Latest COVID-19 Facts](#)

September 27, 2020 - The California Department of Public Health (CDPH) today announced the most recent statistics on COVID-19.

[State Officials Announce Latest COVID-19 Facts](#)

September 26, 2020 - The California Department of Public Health (CDPH) today announced the most recent statistics on COVID-19.

[State Officials Announce Latest COVID-19 Facts](#)

September 25, 2020 - The California Department of Public Health (CDPH) today announced the most recent statistics on COVID-19.

[State Officials Announce Latest COVID-19 Facts](#)

September 24, 2020 - The California Department of Public Health (CDPH) today announced the most recent statistics on COVID-19.

[State Officials Announce Latest COVID-19 Facts](#)

September 23, 2020 - The California Department of Public Health (CDPH) today announced the most recent statistics on COVID-19.

[State Officials Announce Latest COVID-19 Facts](#)

September 22, 2020 - The California Department of Public Health (CDPH) today announced the most recent statistics on COVID-19.



Riverside County Data

<https://www.rivcoph.org/coronavirus>

RUHS Public Health News:

- Riverside County enters state's red tier, more businesses resume indoor operations [English](#) / [Spanish](#) - September 23, 2020
- [Third round of business assistance grant applications to open Sept. 16 with expanded eligibility](#) - September 14, 2020
- More residents needed for COVID testing to slow the spread, move into red tier [English](#) / [Spanish](#) - September 10, 2020
- Riverside County health officials urge residents to take precautions because of smoke, ash from fires [English](#) / [Spanish](#) - September 8, 2020
- [Continue coronavirus safety measures during holiday weekend](#) - September 3, 2020
- Cool centers open during heatwave, COVID testing sites to close for the weekend [English](#) / [Spanish](#) - September 3, 2020
- Riverside County reports first flu-related death of 2020-21 influenza season [English](#) / [Spanish](#) - September 2, 2020
- [Riverside County Takes Action to Address Suicide, Celebrate Recovery](#) - September 1, 2020
- Slow the spread through social media and creative arts challenges [English](#) / [Spanish](#) - September 1, 2020
- Health officials report first case of MIS-C in child from western Riverside County [English](#) / [Spanish](#) - September 1, 2020
- [Adjusting Permitted Sector Activities](#) - August 31, 2020

<https://covid19.ca.gov/safer-economy/>

New dashboard

Click [here](#) for more detailed city/community data and reports

Daily Epidemiology Summary updated 09-28-2020

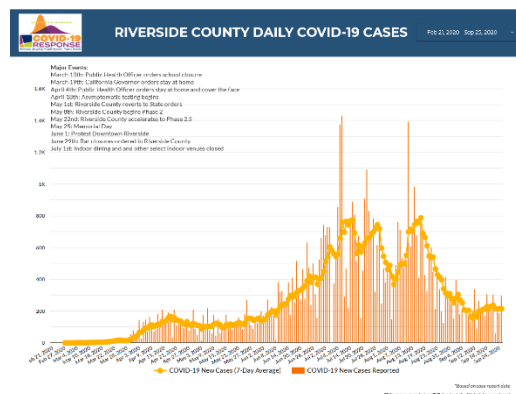
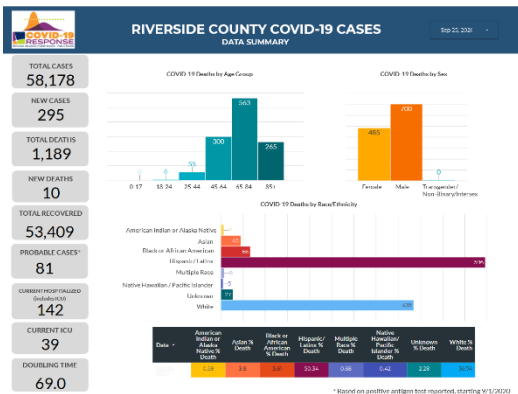
https://www.rivcoph.org/Portals/0/Documents/CoronaVirus/September/Dashboard/5/9.28.20%20Public%20Daily_COVID-19_Updates.pdf?ver=2020-09-28-150624-813×tamp=1601330800483

Tested 643,671	Confirmed 58,932	Currently Hospitalized 128 Includes 36 in ICU	Deaths 1,206	Recovered 53,930
Current County Risk Level SUBSTANTIAL Some non-essential indoor business operations are closed	Current Adjusted Case Rate per 100K 6.7 For State Tier Assignment	Positivity Rate 5.8% State-Calculated	Information on State Reopening Metrics Here	Detailed Community Data and Reports Here

Confirmed Cases by City of Residence (Click on map for numbers)

Cases in County Jails = 428; Recovered = 362; Cases in State Prisons = 2,644, Recovered = 1,574

County of Riverside, Esri, HERE, Garmin, FAO, N...



Weather



Heat Advisory in effect until 800 pm PDT Thu. 10/1/2020

Table updated: 218 am PDT Tue. 9/29/2020 (Last Update: 526 minutes ago)

[Click for Text Forecast](#)

[SGX Forecast Discussion](#)

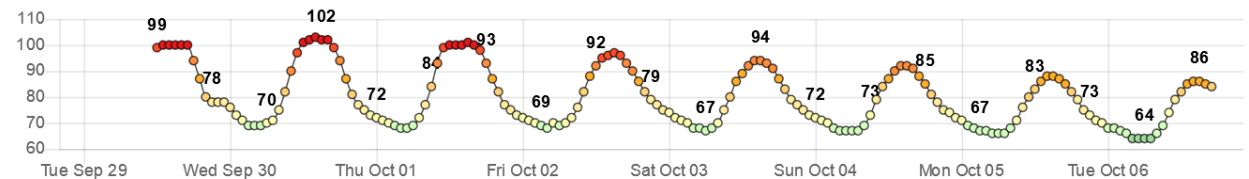
1 miles WSW of Norco, CA

Weekly Summary

	Tue Sep 29	Wed Sep 30	Thu Oct 1	Fri Oct 2	Sat Oct 3	Sun Oct 4	Mon Oct 5
Max Temp, °F	101	105	101	100	97	93	91
Max Heat Index, °F	97	97	96	93	91	89	86
Min Temp, °F	69	69	68	67	65	64	64
Max Wind, mph	10	8	14	13	13	13	12
Min Wind, mph	3	5	3	2	1	1	2
Max Wind Gust, mph	17	14	23	21	21	21	20
Max Cloud Cover, %	4	4	3	3	7	26	36
Min Cloud Cover, %	4	3	3	3	3	7	22
Max Prob. of Precip., %	0	0	0	0	0	0	0
Max RH, %	37	37	39	40	47	52	59
Min RH, %	11	10	12	17	21	23	28
Max Dew Point, °F	50	46	46	50	52	53	55
Min Dew Point, °F	36	35	39	42	46	48	51
Min Snow Level, x1000ft.	11.3	11.1	11	10.8	10.6	10.5	10.3

Hourly Graphs

Temperature, °F



Latest hazard threat table:

<https://www.wrh.noaa.gov/sgx/event/dsstable.php>

<https://www.weather.gov/forecastpoints#>

Wildfire

<https://www.latimes.com/wildfires-map/>

Los Angeles Times

✕ Active fire ○ Fire perimeter ● Hotspot 🔥 Number of hotspots 🌫️ Air pollution

Last updated 8 minutes

California wildfires map

The most recent fire is the **Glass** fire, which started on Sept. 27. It is 0% contained and has burned 11,000 acres so far.

The largest active fire is the **August Complex** fire, which has burned 878,470 acres so far. It started on Aug. 16 and is 45% contained.

f t

▶ About this map

35 California fires

August Complex	CA
878,470 acres burned	
Burning for 43 days	
▶ Includes 5 fires	
45% contained	

Scu Lightning Complex	CA
396,624 acres burned	
Burning for 41 days	
▶ Includes 3 fires	
98%	

Lnu Lightning Complex	CA
363,220 acres burned	
Burning for 42 days	
98%	

North Complex	CA
306,135 acres burned	
Burning for 41 days	
▶ Includes 23 fires	
78%	

Claremont-bear	CA
305,179 acres burned	
Burning for 42 days	

By continuing to use our site, you agree to our [Terms of Service](#) and [Privacy Policy](#). You can learn more about how we use cookies by reviewing our [Privacy Policy](#). Close

30mi

mapbox

© Mapbox © OpenStreetMap Improve th