



****Extraordinary Assumptions:** There are a lot of different data sources in this report not all of them match but aid to provide an overall picture of the current situation. **COVID-19 Data Source Comparison -** https://covid-19.splunkforgood.com/covid_19_datasource_comparison

Daily Situation Summary

Monday, September 21, 2020

As of 10:00 AM

COVID-19 by the Numbers

9/21/2020	Riverside	Imperial	Kern	Los Angeles	Orange	San Bernardino	San Diego	San Luis Obispo	Santa Barbara	Ventura	California	United States	Global
Total Cases	56,562	10,496	30,886	259,801	50,999	51,353	44,295	3,369	8,862	12,328	778,400	6,786,352	30,949,804
New Cases	314	36	144	1,313	266	247	286	41	38	92	4,265	37,417	272,585
Total Cases Per Capita	2,373	5,824	3,498	2,573	1,612	2,405	1,341	1,197	1,997	1,454	1,988	2,055	403
New Cases Per Capita	13	20	16	13	8	12	9	15	9	11	11	11	4
Recovered	51,988	10,916	15,338	Not Reported	46,720	50,228	39,890	3,129	8,485	10,986	396,301	4,269,757	22,931,980
Total Deaths	1,153	314	354	6,330	1,127	908	760	27	110	143	14,987	199,024	959,116
New Deaths	0	2	4	0	4	50	3	0	0	0	75	270	4,698
Deaths Per Capita	48.38	174.24	40.09	62.69	35.62	42.52	23.01	9.59	24.79	16.86	38.28	60.26	12.49
Presumptive active cases	3,421	-734	15,194		3,152	217	3,645	213	267	1,199	367,112	2,317,571	7,058,708
% of State's Cases	7.27%	1.35%	3.97%	33.38%	6.55%	6.60%	5.69%	0.43%	1.14%	1.58%	11.47%	21.93%	
Currently in Hospitals	192	18	76	1,077	246	221	253	12	26	59	3,441		
Total Hospital Beds	3,359	259	1,308	19,792	5,674	3,800	6,634	451	666	1,251	66,797		
Currently in ICU	47	8	21	207	65	45	72	4	4	18	807		
ICU Beds Available	105	7	69	967	246	169	314	19	64	54	2,830		
Case Fatality Rate	2.0%	3.0%	1.1%	2.4%	2.2%	1.8%	1.7%	0.8%	1.2%	1.2%	1.9%	2.9%	3.1%
Population*	2,383,286	180,216	883,053	10,098,052	3,164,182	2,135,413	3,302,833	281,455	443,738	848,112	39,148,760	330,249,194	7,679,405,000
% of Population	6.09%	0.46%	2.26%	25.79%	8.08%	5.45%	8.44%	0.72%	1.13%	2.17%	0.24%	0.0884%	

Sources: CDPH, WHO, CDC

The date for which case statistics and hospital data were reported. Hospital COVID data are self-reported through a portal managed by the California Hospital Association and pulled at 2pm. COVID case statistics are reported by local health departments to CaIREDIE and are pulled at 2pm. Hospital data and case statistics are integrated by the California Department of Technology and made available through the Open Data Portal the following morning. CA Open Data Portal is at least 24 Hours behind although a backlog of new case reports at the State level has ostensibly been cleared, some County dashboards still contain notes that indicate data are missing. *California-Demographics.com made by Cubit - a demographic data provider & census.gov

Presumptive active cases - A calculation (Total Cases - Recovered - Dead) (LA County does not report recovery rates and Imperial County case data reporting is delayed to the state data source)

Information

More detail on page 2

News

More detail on page 3

US Data

More detail on page 7

State Data

More detail on page 11

Riverside County Data

More detail on page 14

Weather

More detail on page 15

Wildfire /PSPS

More detail on page 16

Air Quality Index

More detail on page 17

Information

A history of herd immunity

- As many countries around the world recognised the magnitude of the COVID-19 pandemic in March, 2020, some seemed to put their faith in herd immunity. UK pandemic adviser Graham Medley, for example, said that “We are going to have to generate what we call herd immunity”, which would require “a nice big epidemic”. When the idea received furious criticism, British officials denied that herd immunity had ever been part of their plan. A run at herd immunity in Sweden prompted mathematician Marcus Carlsson to object: “we are being herded like a flock of sheep toward disaster”. In August, WHO's Michael Ryan warned journalists “we are nowhere close to the levels of immunity required to stop this disease transmitting. We need to focus on what we can actually do now to suppress transmission and not live in hope of herd immunity being our salvation.” That did not end the debate. In late August sources revealed that the White House might be pondering a policy of herd immunity. Officials issued a prompt denial. The appeal of herd immunity is easy to understand: if it is reached, an epidemic ends. But the illness and death such an approach would require have prompted a strong backlash. The language of herd immunity is part of the problem. A herd usually describes domesticated animals, especially livestock. Herd animals like cows, goats, or sheep are sacrificed for human consumption. Few humans want to be part of that kind of herd.
- How did herd immunity enter the language of public health? The phrase seems to have first appeared in the work of American livestock veterinarians concerned about “contagious abortion”—epidemics of spontaneous miscarriage—in cattle and sheep. By the 1910s, it had become the leading contagious threat to cattle in the USA. Farmers destroyed or sold affected cows. Kansas veterinarian George Potter realised that this was the wrong approach. Writing with Adolph Eichhorn in 1916 in the *Journal of the American Veterinary Medical Association*, he envisioned “herd immunity”. As he wrote in 1918, “Abortion disease may be likened to a fire, which, if new fuel is not constantly added, soon dies down. Herd immunity is developed, therefore, by retaining the immune cows, raising the calves, and avoiding the introduction of foreign cattle.”
<https://www.thelancet.com/journals/lancet/article/PIIS0140-67362031924-3/fulltext>



One Good Thing

- Stories about the kindness of strangers and individuals who sacrifice for others.

<https://apnews.com/OneGoodThing> & <https://www.goodnewsnetwork.org/>

News – The collection of news articles is related to COVID-19. The inclusion or order of articles is not intended to reflect their importance, nor is it intended to endorse the political viewpoints or affiliations included in news coverage.

Taj Mahal Reopens In India For 1st Time In 6 Months

- Visitors are capped at 5,000 a day. Everyone must wear a mask and have their temperature taken. Tickets are digital. Selfies are allowed, but no group photos. And no touching the gleaming white marble.
- Those are among the new coronavirus-era rules at India's Taj Mahal, which reopened to tourists at sunrise Monday for the first time in more than six months. The monument shut on March 17, just days before India imposed the world's biggest coronavirus lockdown, when infections were still low in the country.
- Since late May, India has been easing restrictions to try to revive its economy, which shrank by nearly 24% in the last quarter. Tourism and travel — which, according to the World Travel and Tourism Council, amounted to \$194.3 billion or 6.8% of India's economy in 2019 — have slumped. The Taj Mahal is India's most-visited tourist site.
- Fewer than 300 people reserved tickets for Monday's reopening. Before the pandemic, the Taj Mahal received up to 70,000 visitors a day. In recent years, authorities — concerned about damage to the monument — sought to limit the number of domestic visitors to 40,000 a day and restrict the duration of visits to under three hours.
<https://www.npr.org/sections/coronavirus-live-updates/2020/09/21/915228640/taj-mahal-reopens-in-india-for-1st-time-in-six-months>

The UK's doubling coronavirus cases mean Boris Johnson can't wake up from his Covid-19 nightmare

- The number of coronavirus cases in the UK is doubling roughly every seven days, according to the country's chief scientific advisor, Patrick Vallance. If that rate continues to grow unabated, "by mid-October you would end up with something like 50,000 per day," which "could lead to 200 deaths a day" by November, Vallance warned at a Monday press briefing.
- "If we don't act, the virus will take off," Vallance's colleague Chris Whitty, the UK's chief medical officer, told the same briefing in Downing Street. "That is the path we are on and if we do not change course, we will find ourselves in a difficult problem."
<https://www.cnn.com/2020/09/21/uk/uk-coronavirus-second-lockdown-boris-johnson-intl-gbr/index.html>

Tourists in Croatia Help Feed Covid-19 Surge Across Europe

- Croatia was a uncommon European nation to carry each day new Covid-19 instances to zero again in May. Now it has grow to be an instance of how summer time tourism triggered a second wave of infections sweeping much of the continent.
- The fall from poster boy to scorching spot got here after the federal government, motivated by financial considerations, determined to open the coastal nation's borders early this summer time and woo the overseas vacationers who've been a pillar of its financial system. After changing into contaminated, the vacationers returned house, taking the virus with them.
- Croatia has now grow to be a case examine in how worldwide
<https://worldauthenticnews.com/tourists-in-croatia-help-feed-covid-19-surge-across-europe/>

Israel Enforces New Covid-19 Lockdown Amid Rosh Hashana Celebrations

- Israel became the first developed country to impose a second nationwide lockdown amid rising numbers of Covid-19 cases. As businesses were forced to close ahead of major Jewish festivals, WSJ's Dov Lieber met with restaurant owners who worried they might never reopen

- Most Israelis stayed indoors to celebrate Rosh Hashana in small groups, rather than the usually large gatherings that mark the Jewish New Year holiday, as the police fined thousands of people for violating a second nationwide lockdown aimed at containing a fresh coronavirus outbreak

<https://www.wsj.com/articles/israel-enforces-new-covid-19-lockdown-amid-rosh-hashana-celebrations-11600620869>

CDC says it erroneously posted guidance that said coronavirus spreads through air and travels beyond 6 feet

- The Centers for Disease Control and Prevention said Monday that it erroneously posted guidance that said the coronavirus spreads through airborne particles that can remain suspended in the air and travel beyond six feet.
- The updated guidance, posted on the CDC's website on Friday, also recommended that people use air purifiers to reduce airborne germs indoors to prevent the disease from spreading, according to Reuters.
- "A draft version of proposed changes to these recommendations was posted in error to the agency's official website," the CDC said Monday. "CDC is currently updating its recommendations regarding airborne transmission of SARS-CoV-2 (the virus that causes COVID-19). Once this process has been completed, the update language will be posted."
- Earlier in the day, the World Health Organization said it contacted the CDC about the guidance change.
- The WHO had not seen any "new evidence" on airborne particles and was checking with the CDC to "better understand" the exact nature of the change, Dr. Mike Ryan, executive director of the WHO's health emergencies program, said during a news conference at the agency's Geneva headquarters.

<https://www.cnn.com/2020/09/21/cdc-says-it-erroneously-posted-guidance-that-said-coronavirus-spreads-through-air-and-travel-beyond-six-feet.html>

What Is the Risk of Catching the Coronavirus on a Plane?

- According to experts, the risk of catching the coronavirus on a plane is relatively low if the airline is following the procedures laid out by public health experts: enforcing mask compliance, spacing out available seats and screening for sick passengers.
- "If you look at the science across all diseases, you see few outbreaks" on planes, Allen said. "It's not the hotbed of infectivity that people think it is."
- Airlines frequently note that commercial planes are equipped with HEPA filters, the Centers for Disease Control-recommended air filters used in hospital isolation rooms. HEPA filters capture 99.97% of airborne particles and substantially reduce the risk of viral spread. In addition, the air in plane cabins is completely changed over 10 to 12 times per hour, raising the air quality above that of a normal building.
- Because of the high air exchange rate, it's unlikely you'll catch the coronavirus from someone several rows away. However, you could still catch the virus from someone close by.
- "The greatest risk in flight would be if you happen to draw the short straw and sit next to or in front, behind or across the aisle from an infector," said Richard Corsi, who studies indoor air pollution and is the dean of engineering at Portland State University.
- It's also important to note that airplanes' high-powered filtration systems aren't sufficient on their own to prevent outbreaks. If an airline isn't keeping middle seats open or vigilantly enforcing mask use, flying can actually be rather dangerous. Currently, the domestic airlines keeping middle seats open include Delta, Hawaiian, Southwest and JetBlue.

<https://khn.org/news/what-is-the-risk-of-getting-coronavirus-on-a-plane/>

A Drug Used to Treat Deadly Coronavirus Infections in Cats May Be an Effective Treatment Against COVID-19

- Researchers at the University of Alberta have shown that a drug used to treat deadly coronavirus infections in cats could potentially be an effective treatment against SARS-CoV-2, the virus behind the global coronavirus pandemic. The results were published in the journal Nature Communications.
- The study, which was aided by scientists at the U.S. Department of Energy's SLAC National Accelerator Laboratory, paves the way for human clinical trials, which should begin soon, said Joanne Lemieux, a professor of biochemistry at the University of Alberta and the study's senior author.
- Joanne Lemieux
- Joanne Lemieux and a team at the University of Alberta found that a drug used in cats may help treat SARS-CoV-2 infections. Credit: Image courtesy Joanne Lemieux
- "This drug is very likely to work in humans, so we're encouraged that it will be an effective treatment for COVID-19 patients," Lemieux said, although the clinical trials will need to run their course before anyone can be sure that the drug, a protease inhibitor called GC376, is both safe and effective for treating COVID-19 in humans.

<https://scitechdaily.com/a-drug-used-to-treat-deadly-coronavirus-infections-in-cats-may-be-an-effective-treatment-against-covid-19/>

Covering the race for a Covid vaccine: 'The speed of progress is astonishing'

- How fast is development of a Covid-19 vaccine moving and when will it be ready? Incredibly fast. Faster than any vaccine has ever been developed before, but we will have to wait a while longer yet.
- Everyone is aware of the urgency. No interview with a scientist trying to develop a Covid-19 vaccine passes without the urgent question: "When will it be ready?"
- But the answer is probably not this year. Next spring is far more likely. It is essential that any vaccine is very safe and at least moderately effective. To be sure of both those things, a lot of data from trials involving tens of thousands of volunteers needs to be collected and then assessed and verified by regulators. And the volunteers need to be in the middle of an outbreak, where people are at risk of infection. Sadly, it's only when unvaccinated people fall sick and vaccinated people do not that you know it works.

<https://www.theguardian.com/membership/2020/sep/21/covid-19-vaccine-race-develop>

RELATED

Russia Strikes Deals to Sell Its Coronavirus Vaccine Internationally

<https://www.wsj.com/articles/russia-strikes-deals-to-sell-its-coronavirus-vaccine-internationally-11600610554>

NIH Substance use disorders linked to COVID-19 susceptibility

- A National Institutes of Health-funded study found that people with substance use disorders (SUDs) are more susceptible to COVID-19 and its complications. The research, published today in Molecular Psychiatry, was co-authored by Nora D. Volkow, M.D., director of the National Institute on Drug Abuse (NIDA). The findings suggest that health care providers should closely monitor patients with SUDs and develop action plans to help shield them from infection and severe outcomes.
- By analyzing the non-identifiable electronic health records (EHR) of millions of patients in the United States, the team of investigators revealed that while individuals with an SUD constituted 10.3% of the total study population, they represented 15.6%

of the COVID-19 cases. The analysis revealed that those with a recent SUD diagnosis on record were more likely than those without to develop COVID-19, an effect that was strongest for opioid use disorder, followed by tobacco use disorder. Individuals with an SUD diagnosis were also more likely to experience worse COVID-19 outcomes (hospitalization, death), than people without an SUD.

- “The lungs and cardiovascular system are often compromised in people with SUD, which may partially explain their heightened susceptibility to COVID-19,” said Dr. Volkow. “Another contributing factor is the marginalization of people with addiction, which makes it harder for them to access health care services. It is incumbent upon clinicians to meet the unique challenges of caring for this vulnerable population, just as they would any other high-risk group.”

<https://www.nih.gov/news-events/news-releases/substance-use-disorders-linked-covid-19-susceptibility>

Dow tumbles 800 points as coronavirus fears mount

- A painful start to the week for the Dow and the broader market, stocks tumbled Monday as investors worry when Washington will agree another stimulus bill.
- Rising Covid-19 infections around the world as the colder seasons of the year are beginning are also weighing on the market. Investors are growing increasingly worried about renewed lockdowns in the winter while the economic recovery from the pandemic remains fragile.
- The Dow (INDU) was 800 points, or 2.9%, in the early afternoon. The broader S&P 500 (SPX) was down 2.2%. Both the Dow and the S&P are flirting with falling into correction territory, which is defined as a 10% drop from its peak.
- The Nasdaq Composite (COMP), the only index of the three that currently is in correction territory, was down 1.4%.

<https://www.cnn.com/2020/09/21/investing/dow-stock-market-today/index.html>

California pauses unemployment applications amid coronavirus pandemic

- Starting Sunday, the California Employment Development Department stopped taking new unemployment applications amid the coronavirus pandemic.
- The department said in a statement that it was “making improvements to UI Online and cannot accept new unemployment applications.” “These new changes will not cause payment delays and allows EDD to pay customers sooner by verifying identities in an easier, faster way. Once UI Online is available for new applications on October 5, 2020, claims will be backdated to cover this time period,” according to the department.
- According to the state the EDD has a backlog of almost 600,000 Californians who have applied for unemployment insurance.
- Existing claims will not be impacted, the agency said.

<https://www.10news.com/news/local-news/california-pauses-unemployment-applications-amid-coronavirus-pandemic>

Is Halloween still happening? Nearly 25% plan to trick or treat despite cities clamping down

- Americans are still hopeful about trick-or-treating this Halloween despite a number of cities clamping down on holiday festivities in the age of COVID-19.
- Nearly a quarter of Americans (23%) said they still planned to participate in trick-or-treating this year, compared to 29% last year, according to a survey from the National Retail Federation. That's despite a number of cities canceling festive activities like parades and street fairs amid the pandemic.

<https://www.foxnews.com/lifestyle/halloween-trick-or-treating-cities-nationwide-clamping-down>



U.S. Data

<https://covid.cdc.gov/covid-data-tracker/#social-impact>

Social Impact COVID-19 Events in the United States

2 EVENTS
Past 48 hours

Map of news reports related to social impact events resulting from the COVID-19 outbreak in the United States, such as school closures, localized outbreaks, state of emergency declarations, etc.

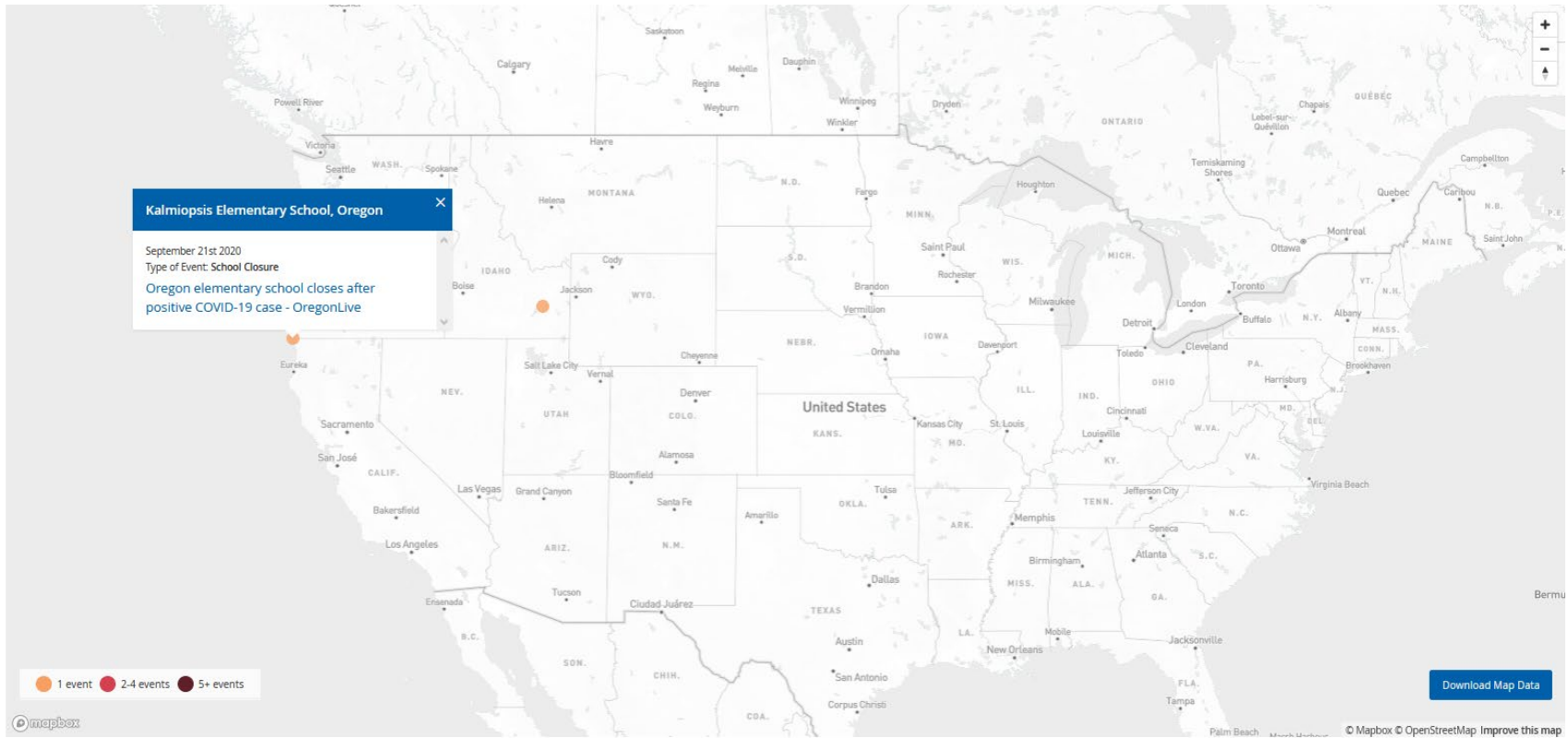
DATE RANGE

Past 48 hours

TYPE OF EVENT ?

School Closure

[About this Map](#) | Developed by [HealthMap](#)



United States COVID-19 Cases and Deaths by State

Reported to the CDC since January 21, 2020

USA
6,786,352
TOTAL CASES
 +37,417 New Cases
 CDC | Updated: Sep 21 2020 12:16PM

USA
199,024
TOTAL DEATHS
 +270 New Deaths
 CDC | Updated: Sep 21 2020 12:16PM

USA
283,358
Cases in Last 7 Days
 CDC | Updated: Sep 21 2020 12:16PM

Cases in Last 7 Days by State/Territory

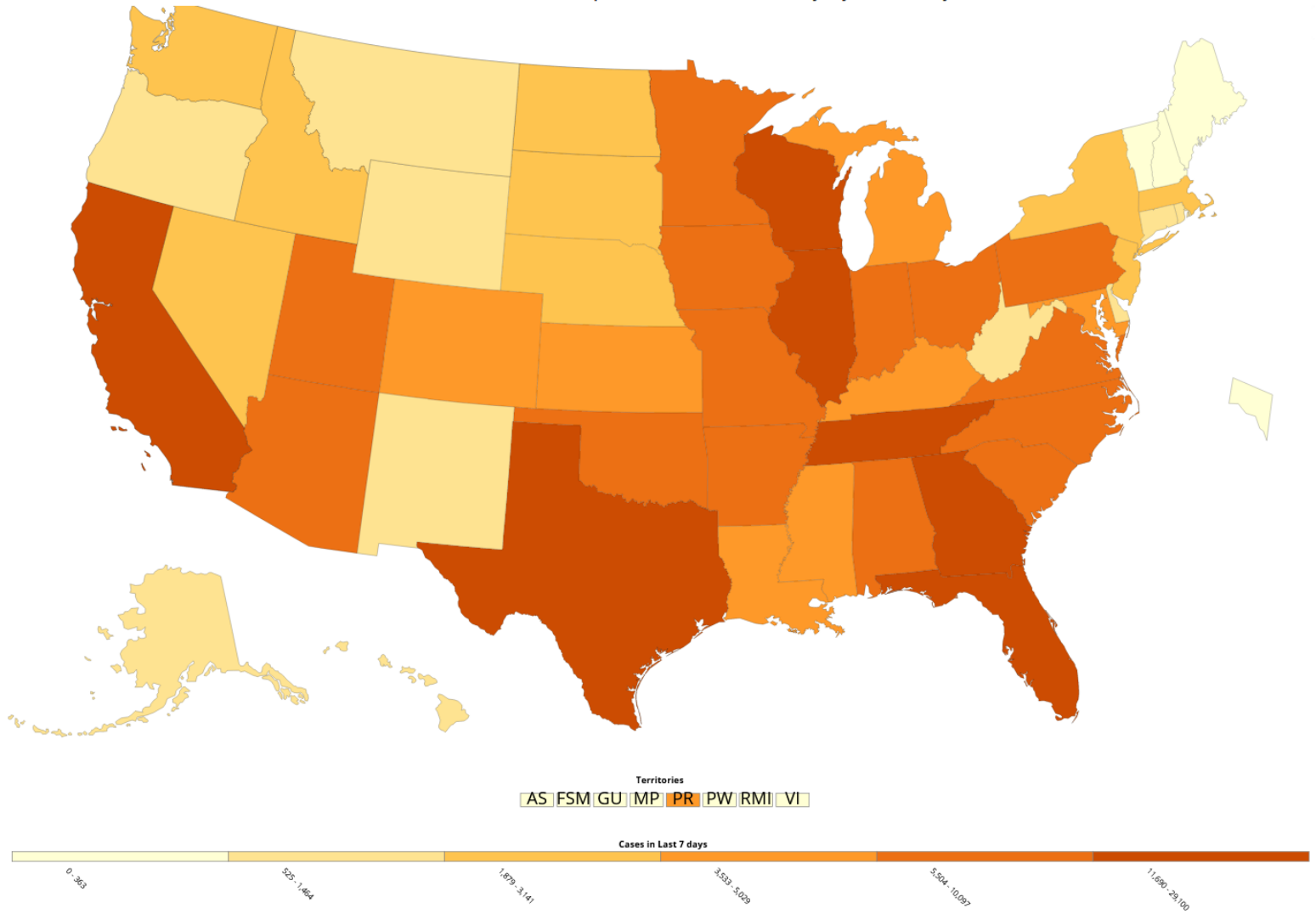
State/Territory	Cases in Last 7 Days
Texas	29,100
California	23,477
Florida	19,206
Illinois	12,990
Wisconsin	12,613
Georgia	11,761
Tennessee	11,690
Missouri	10,097
Oklahoma	8,702
North Carolina	8,645
Ohio	6,904
Virginia	6,567
...	...

CDC | Updated: Sep 21 2020 12:16PM

[View Historic Case and Death Data](#)

Cases in Last 7 Days | Total Cases | Cases per 100,000 | Deaths in Last 7 Days | Total Deaths | Deaths per 100,000

US COVID-19 Cases Reported to the CDC in the Last 7 Days, by State/Territory



CDC Guidance Documents

<https://www.cdc.gov/coronavirus/2019-ncov/communication/guidance-list.html?Sort=Date%3A%3Adesc>

[Interim Laboratory Biosafety Guidelines for Handling and Processing Specimens Associated with Coronavirus Disease 2019 \(COVID-19\)](#)

General and specific biosafety guidelines for handling SARS-CoV-2 specimens.

Date: 9/18/20

Audience: [Laboratory](#)

[Overview of Testing for SARS-CoV-2 \(COVID-19\)](#)

Summary of considerations and current CDC recommendations regarding SARS-CoV-2 testing.

Date: 9/17/20

Audience: [Health Departments](#), [Healthcare Professionals](#), [State and Local Government](#)

[Guidance for Reopening Buildings After Prolonged Shutdown or Reduced Operation](#)

Ensure that your water system is safe to use after a prolonged shutdown to minimize the risk of Legionnaires' disease and other diseases associated with water.

Date: 9/17/20

Audience: [Community Settings](#), [Public Health Professionals](#)

[COVID-19 Parental Resources Kit – Young Adulthood](#)

Young adults' social, emotional, or mental well-being may be impacted by the pandemic. Learn what you can do to help ensure their well-being.

Date: 9/16/20

Audience: [Colleges and Universities](#), [General Public](#)

[COVID-19 Parental Resources Kit – Childhood](#)

Children's social, emotional, or mental well-being maybe impacted by the pandemic. Learn what you can do to help ensure their well-being.

Date: 9/15/20

Audience: [General Public](#)

[Operational Considerations for Personal Protective Equipment in the Context of Global Supply Shortages for Coronavirus Disease 2019 \(COVID-19\) Pandemic: non-US Healthcare Settings](#)

Considerations for personal protective equipment (PPE) in the context of global supply shortages in non-US healthcare settings.

Date: 9/14/20

Audience: [Healthcare Facilities](#), [Healthcare Professionals](#)

[Guidance for General Population Disaster Shelters During a Pandemic](#)

Date: 9/14/20

Audience: [Colleges and Universities](#), [First Responders](#), [Healthcare Facilities](#), [Healthcare Professionals](#), [High-Risk Populations](#), [Public Health Professionals](#), [Schools](#), [State and Local Government](#)

[Interim Operational Considerations for Public Health Management of Healthcare Workers Exposed to or with Suspected or Confirmed COVID-19: non-U.S. Healthcare Settings](#)

These recommendations are intended to be used by healthcare facilities and public health authorities in non-US healthcare settings, particularly focusing on low- and middle-income countries, assisting with the management of HCWs exposed to a person with confirmed or suspected COVID-19.

Date: 9/11/20

Audience: [Healthcare Facilities](#), [Healthcare Professionals](#)

[Know When to Delay your Travel to Avoid Spreading COVID-19](#)

Advice on when and how long people should delay their domestic or international travel to avoid spreading COVID-19.

Date: 9/10/20

Audience: [Travel](#)

[Additional COVID-19 Guidance for Caregivers of People Living with Dementia in Community Settings](#)

People caring for loved ones with dementia can take steps to prevent illness and stay healthy during the COVID-19 pandemic.

Date: 9/10/20

Audience: [High-Risk Populations](#)

[Implementing Safety Practices for Critical Infrastructure Workers Who May Have Had Exposure to a Person with Suspected or Confirmed COVID-19](#)

Find CDC's guidance for critical workers on how to protect workers who may have been exposed to COVID-19.

Date: 9/10/20

Audience: [Businesses](#)

[Standard Operating Procedure \(SOP\) for Triage of Suspected COVID-19 Patients in non-US Healthcare Settings: Early Identification and Prevention of Transmission during Triage](#)

This document is provided by CDC and is intended for use in non-US healthcare settings. This document is intended for healthcare facilities that are receiving or are preparing to receive patients with suspected or confirmed coronavirus disease 2019 (COVID-19).

Date: 9/10/20

Audience: [Healthcare Professionals](#)

California Takes Action to Combat COVID-19

<https://www.gov.ca.gov/california-takes-action-to-combat-covid-19/>



State Data

<https://covid19.ca.gov/>
<https://update.covid19.ca.gov/#top>
<https://www.cdph.ca.gov/Programs/CID/DCDC/Pages/Immunization/ncov2019.aspx#>

New website and guidance “Safer Economy Blueprint”

<https://covid19.ca.gov/safer-economy>

Statewide industry guidance to reduce risk

<https://covid19.ca.gov/industry-guidance/#top>
<https://www.cdph.ca.gov/Programs/CID/DCDC/Pages/Guidance.aspx>

Data models

<https://covid19.ca.gov/data-and-tools/>



Office of Governor
GAVIN NEWSOM

Press Releases, Executive Orders, Media Advisories,
Proclamations, and “On the Record” Column

<https://www.gov.ca.gov/newsroom/>



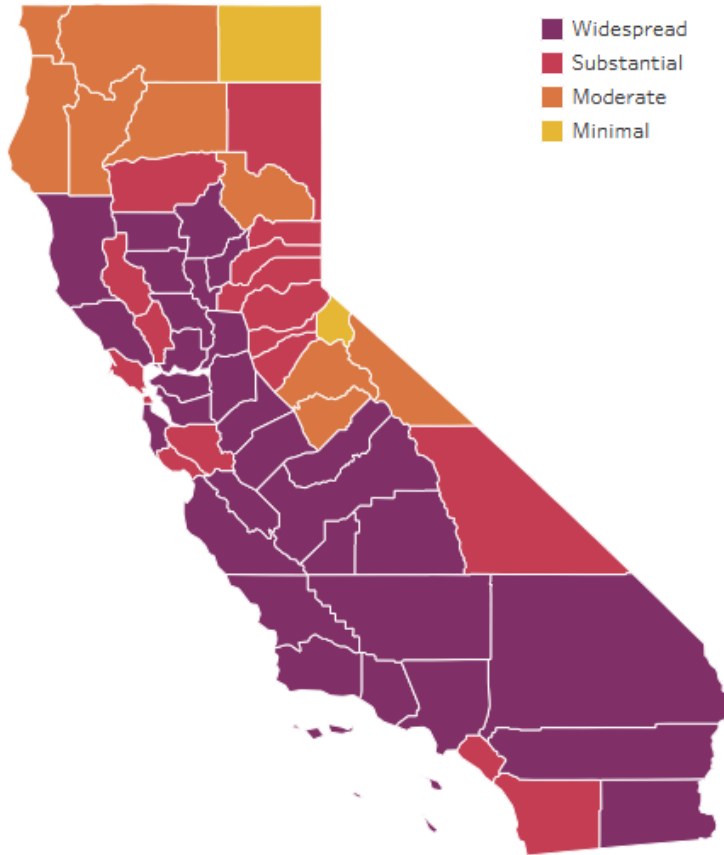
Statewide Metrics

7.7

New COVID-19 positive cases per day per 100K

4.2%

Positivity rate



Data shown is for 9/15 tier assignments

	Higher Risk → Lower Risk of Community Disease Transmission			
	Widespread Tier 1	Substantial Tier 2	Moderate Tier 3	Minimal Tier 4
Measure*				
Adjusted Case Rate for Tier Assignment** (Rate per 100,000 excluding prison cases, 7 day average with 7 day lag)	>7	4-7	1-3.9	<1
Testing Positivity*** (Excluding prison cases, 7 day average with 7 day lag)	>8%	5-8%	2.4-9%	<2%

State Officials Announce Latest COVID-19 Facts

September 20, 2020 - The California Department of Public Health (CDPH) today announced the most recent statistics on COVID-19.

State Officials Announce Latest COVID-19 Facts

September 19, 2020 - The California Department of Public Health (CDPH) today announced the most recent statistics on COVID-19.

State Officials Announce Latest COVID-19 Facts

September 18, 2020 - The California Department of Public Health (CDPH) today announced the most recent statistics on COVID-19.

CDPH and Rabbis from Three Jewish Denominations Share a Message of Health for the High Holy Days

September 17, 2020 – As the Jewish community prepares to observe the High Holy Days of Rosh Hashanah and Yom Kippur, the California Department of Public Health (CDPH) and Rabbis representing Reform, Conservative and Orthodox Judaism are reminding members of the faith to observe this important time of spiritual observance and community while still practicing social distancing.

State Officials Announce Latest COVID-19 Facts

September 17, 2020 - The California Department of Public Health (CDPH) today announced the most recent statistics on COVID-19.

Getting Vaccinated Against Flu More Important Than Ever

September 16, 2020 – In an effort to prevent a "twindemic" of COVID-19 and seasonal influenza, the California Department of Public Health (CDPH) is urging Californians to get vaccinated against the flu now to protect yourself and your loved ones.



Riverside County Data

<https://www.rivcoph.org/coronavirus>

RUHS Public Health News:

- [Third round of business assistance grant applications to open Sept. 16 with expanded eligibility](#) - September 14, 2020
- More residents needed for COVID testing to slow the spread, move into red tier [English](#) / [Spanish](#) - September 10, 2020
- Riverside County health officials urge residents to take precautions because of smoke, ash from fires [English](#) / [Spanish](#) - September 8, 2020
- [Continue coronavirus safety measures during holiday weekend](#) - September 3, 2020
- Cool centers open during heatwave, COVID testing sites to close for the weekend [English](#) / [Spanish](#) - September 3, 2020
- Riverside County reports first flu-related death of 2020-21 influenza season [English](#) / [Spanish](#) - September 2, 2020
- [Riverside County Takes Action to Address Suicide, Celebrate Recovery](#) - September 1, 2020
- Slow the spread through social media and creative arts challenges [English](#) / [Spanish](#) - September 1, 2020
- Health officials report first case of MIS-C in child from western Riverside County [English](#) / [Spanish](#) - September 1, 2020
- [Adjusting Permitted Sector Activities](#) - August 31, 2020

<https://covid19.ca.gov/safer-economy/>

Riverside

WIDESPREAD

Many non-essential indoor business operations are closed [Understand the data.](#)

Counties can restrict further. Check with your local health department to find out what restrictions apply.

New dashboard

Click [here](#) for more detailed city/community data and reports

Daily Epidemiology Summary updated 09-18-2020

[https://www.rivcoph.org/Portals/0/Documents/CoronaVirus/September/Dashboard/Public%20Daily COVID-19 Updates%20\(1\).pdf?ver=2020-09-18-123237-333×tamp=1600457611218](https://www.rivcoph.org/Portals/0/Documents/CoronaVirus/September/Dashboard/Public%20Daily%20COVID-19%20Updates%20(1).pdf?ver=2020-09-18-123237-333×tamp=1600457611218)

Riverside County Metrics

7.4

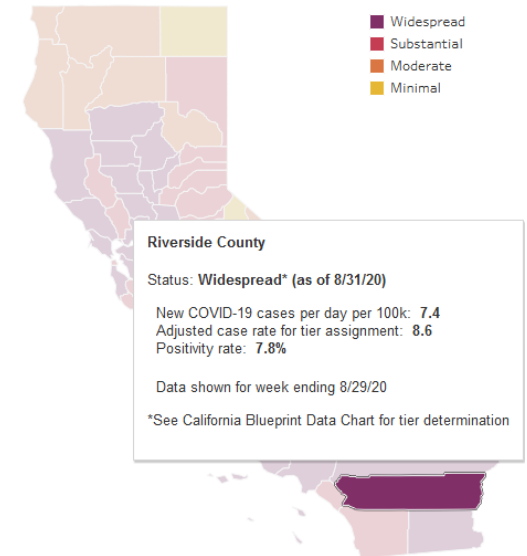
New COVID-19 Positive cases per day per 100K

8.6

Adjusted case rate for tier assignment


7.8%

Positivity Rate



Data shown for week ending 8/29/20

Weather

 National Weather Service San Diego, California		<h2>Weather Threats Outlook</h2> 11:00 AM PDT Sunday September 20, 2020						
County	Zone	Sun 9/20	Mon 9/21	Tue 9/22	Wed 9/23	Thu 9/24	Fri 9/25	Sat 9/26
San Diego	Beach/Marine	None	None	None	None	None	None	None
	Coast	None	None	None	None	Warm	None	None
	Valleys	None	None	None	None	Warm	None	None
	Mountains	Breezy	Breezy	Breezy	None	Warm	None	None
	Deserts	Warm Breezy	Breezy	Breezy	Warm	Warm	Warm	None
Orange	Beach	None	None	None	None	None	None	None
	Coast	None	None	None	None	Warm	None	None
	Inland	None	None	None	None	Warm	None	None
	Mountains	None	None	None	None	Warm	None	None
Riverside	Inland Empire	Warm	None	None	Warm	Warm	Warm	None
	Mountains	Breezy	Breezy	Breezy	None	Warm	None	None
	Desert	Warm Breezy	Breezy	Breezy	Warm	Warm	Warm	None
San Bernardino	Inland Empire	Warm	None	None	Warm	Warm	Warm	None
	Mountains	Breezy	Breezy	Breezy	None	Warm	None	None
	Desert	Breezy	Breezy	Breezy	None	Warm	Warm	None

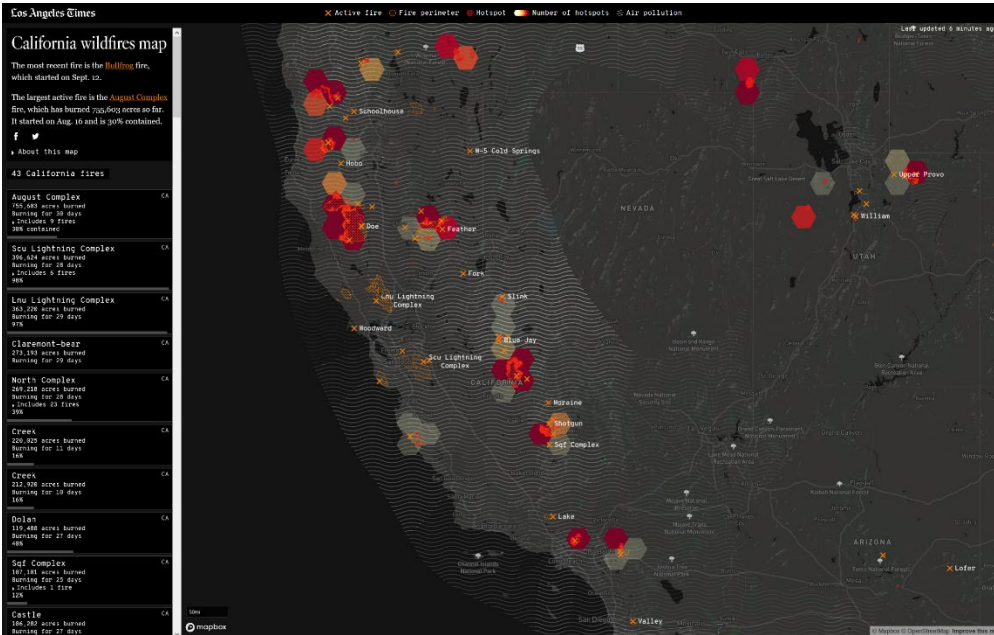
Impact Threat Levels
 None
 Low
 Medium
 High
 Extreme

Latest hazard threat table: <https://www.wrh.noaa.gov/sqx/event/dsstable.php>

<https://www.weather.gov/forecastpoints#>

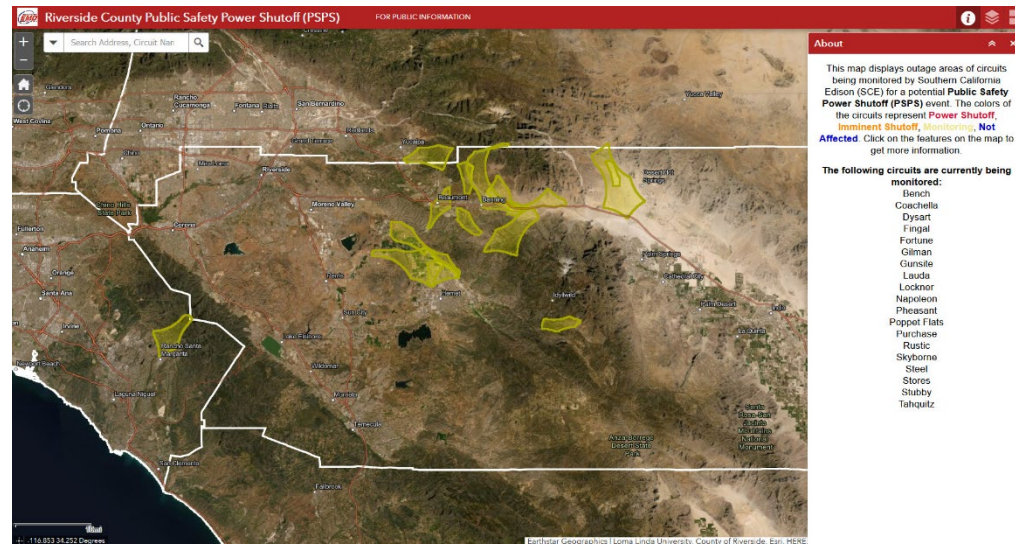
Wildfire / Public Safety Power Shutoff (PSPS)

<https://www.latimes.com/wildfires-map/>



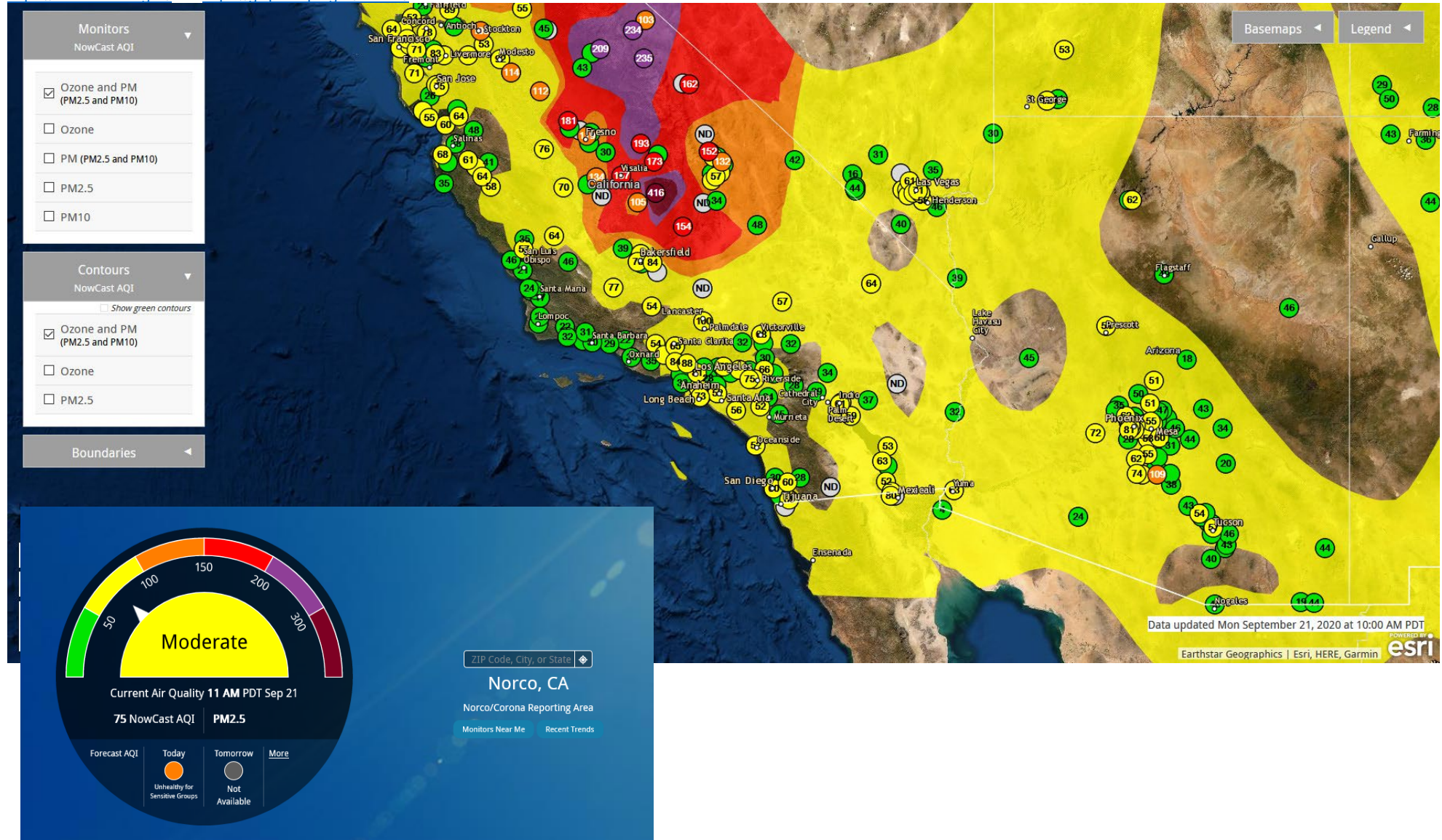
Public Safety Power Shutoff (PSPS)

<https://countyofriverside.maps.arcgis.com/apps/webappviewer/index.html?id=8ecb62c08d934645851d728e3e04e8bb>



Air quality Index

<https://www.airnow.gov/> or <https://gispub.epa.gov/airnow/>



<https://www.airnow.gov/?city=Norco&state=CA&country=USA>