



****Extraordinary Assumptions:** There are a lot of different data sources in this report not all of them match but aid to provide an overall picture of the current situation. COVID-19 Data Source Comparison - https://covid-19.splunkforgood.com/covid_19_datasource_comparison

Daily Situation Summary

Thursday, September 17, 2020

As of 10:00 AM

COVID-19 by the Numbers

09/17/2020	Riverside	Imperial	Kern	Los Angeles	Orange	San Bernardino	San Diego	San Luis Obispo	Santa Barbara	Ventura	California	United States	Global
Total Cases	55,569	10,376	30,429	255,048	50,294	50,333	43,183	3,262	8,724	11,932	762,963	6,571,867	29,737,453
New Cases	81	36	85	426	145	170	294	14	32	29	2,950	34,240	292,307
Total Cases Per Capita	2,332	5,758	3,446	2,526	1,589	2,357	1,307	1,159	1,966	1,407	1,949	1,990	387
New Cases Per Capita	3	20	10	4	5	8	9	5	7	3	8	10	4
Recovered	51,372	10,788	14,831	Not Reported	45,900	46,397	38,373	3,091	8,497	10,860	385,142	4,120,574	21,858,654
Total Deaths	1,125	309	333	6,273	1,105	835	742	26	107	138	14,615	195,053	937,391
New Deaths	7	1	1	42	12	3	8	0	1	3	164	961	6,057
Deaths Per Capita	47.20	171.46	37.71	62.12	34.92	39.10	22.47	9.24	24.11	16.27	37.33	59.05	12.20
Presumptive active cases	3,072	-721	15,265		3,289	3,101	4,068	145	120	934	363,206	2,256,240	6,941,408
% of State's Cases	7.28%	1.36%	3.99%	33.43%	6.59%	6.60%	5.66%	0.43%	1.14%	1.56%	11.61%	22.10%	
Currently in Hospitals	217	22	77	1,128	258	237	275	13	31	67	3,685		
Total Hospital Beds	3,402	259	1,330	20,011	5,636	3,845	6,621	451	666	1,225	67,066		
Currently in ICU	47	6	17	238	67	55	78	4	7	20	875		
ICU Beds Available	102	7	54	968	229	144	303	22	63	51	2,744		
Case Fatality Rate	2.0%	3.0%	1.1%	2.5%	2.2%	1.7%	1.7%	0.8%	1.2%	1.2%	1.9%	3.0%	3.2%
Population*	2,383,286	180,216	883,053	10,098,052	3,164,182	2,135,413	3,302,833	281,455	443,738	848,112	39,148,760	330,299,006	7,681,977,000
% of Population	6.09%	0.46%	2.26%	25.79%	8.08%	5.45%	8.44%	0.72%	1.13%	2.17%	0.23%	0.0855%	

Sources: CDPH, WHO, CDC

The date for which case statistics and hospital data were reported. Hospital COVID data are self-reported through a portal managed by the California Hospital Association and pulled at 2pm. COVID case statistics are reported by local health departments to CalREDIE and are pulled at 2pm. Hospital data and case statistics are integrated by the California Department of Technology and made available through the Open Data Portal the following morning. CA Open Data Portal is at least 24 Hours behind although a backlog of new case reports at the State level has ostensibly been cleared, some County dashboards still contain notes that indicate data are missing. *California-Demographics.com made by Cubit – a demographic data provider & census.gov

Presumptive active cases - A calculation (Total Cases - Recovered - Dead) (LA County does not report recovery rates and Imperial County case data reporting is delayed to the state data source)

Information & News

More detail on page 2

Global Data

More detail on page 6

US Data

More detail on page 8

State Data

More detail on page 15

Riverside County Data

More detail on page 18

Weather

More detail on page 19

Wildfire

More detail on page 24

Air Quality Index

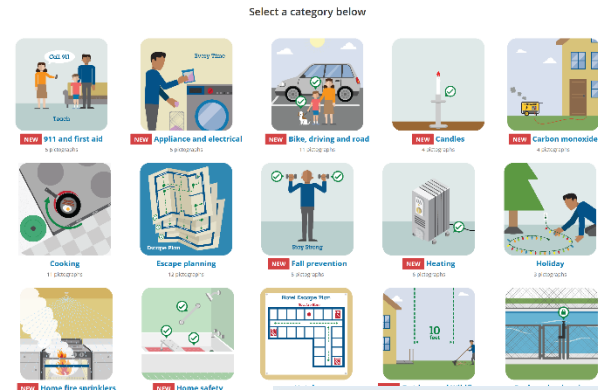
More detail on page 31

Information

A pictograph is worth a thousand words

https://www.usfa.fema.gov/current_events/090320.html

<https://www.usfa.fema.gov/prevention/outreach/media/pictographs/index.html>



New graphics highlight wildland firefighter safety messaging

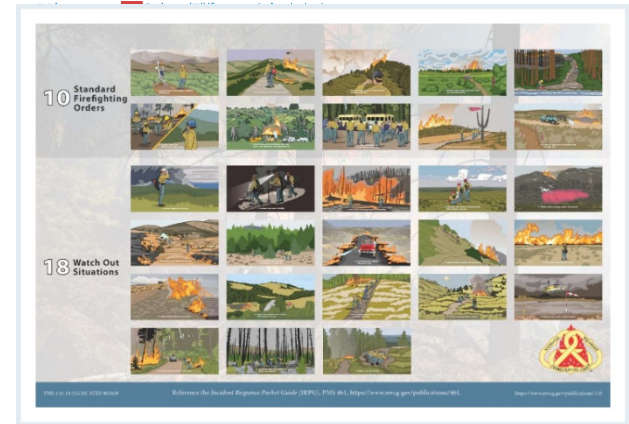
https://www.usfa.fema.gov/current_events/071720.html

<https://www.nwccg.gov/publications/pms110-18>

First case of African swine fever in wild boar in Germany

- The African swine fever (ASF) virus was detected in a wild boar found dead in Brandenburg close to the Polish border. The state laboratory Berlin-Brandenburg detected specific genome sequences of the ASF virus in samples that were taken on the site. The national reference laboratory for ASF at the Friedrich-Loeffler-Institut (FLI) on the island of Riems confirmed the case on 10 September 2020. This is the first case of ASF in Germany.
- While ASF is not of concern to human health, it is highly infectious and virulent in pigs and can significantly impact pork production. In 2019, 6.9 million pigs were culled as a precaution to prevent ASF spread. There is neither a vaccine nor cure for ASF so susceptible pig populations are typically destroyed to prevent further transmission. Nevertheless, vaccine research and development is actively underway. Wild boar populations infected with ASF or contaminated pork products may perpetuate the disease through winter months and potentially infect domestic pigs. Germany represents the largest pork producer in the European Union, valued at \$1.2 billion and representing 23% of the EU export market in 2019. The spread of ASF in Germany will have significant economic consequences for Germany and the European Union. To mitigate the adverse economic impacts, Germany is seeking ASF-regionalization agreements with trade partners outside the EU.

<https://www.fli.de/en/news/short-messages/short-message/first-case-of-african-swine-fever-in-wild-boar-in-germany/>



News – The collection of news articles is related to COVID-19. The inclusion or order of articles is not intended to reflect their importance, nor is it intended to endorse the political viewpoints or affiliations included in news coverage.

<https://hsin.dhs.gov/collab/ES/Daily%20Reports/DHS%20Morning%20Briefing%20-%20September%2015,%202020.pdf>

India On Track To Surpass U.S. As Country Worst Affected By COVID-19

- With nearly 98,000 new coronavirus cases confirmed Thursday, India again broke the record for the highest daily tally of infections for any country since the pandemic began. It is on track, within weeks, to become the worst-affected country in the world.
- On Wednesday, India's total caseload surpassed 5 million — a number only the United States had so far exceeded. The U.S. still has more cases overall, some 6.6 million. But India is where the virus is spreading fastest. The country confirmed 1 million new infections in the past 11 days alone.
- Cases had plateaued in Mumbai and New Delhi, India's two biggest cities, in recent weeks. But they are climbing again, and spreading fast as well in smaller towns and rural areas, where health care is already scant.

<https://www.npr.org/sections/coronavirus-live-updates/2020/09/17/913475045/india-is-on-track-to-surpass-u-s-as-the-country-worst-affected-by-covid-19>

WHO warns of 'very serious situation' in Europe, with 'alarming rates' of virus transmission

- The World Health Organization (WHO) has warned that coronavirus cases are surging alarmingly in Europe, as a "very serious situation" unfolds across the continent.
- As Covid-19 infections spike to record numbers, European governments are imposing strict local measures and weighing up further lockdowns in a bid to halt a second wave of the pandemic.
- But WHO regional director Hans Kluge said at a Thursday news conference that the increase in cases should serve as a warning of what is to come. "Weekly cases have now exceeded those reported when the pandemic first peaked in Europe in March," Kluge said. "Last week, the region's weekly tally exceeded 300,000 patients."
- More than half of European nations have reported an increase of more than 10% in new cases in the past two weeks, Kluge added. "Of those, seven countries have seen newly reported cases increase more than two-fold in the same period,"

<https://www.cnn.com/2020/09/17/europe/coronavirus-europe-who-second-wave-intl/index.html>

How 1 Maine Wedding Caused Hundreds Of Coronavirus Cases And 7 Deaths (Audio)

- The wedding reception took place last month in a rural part of Maine. It had a guest list of about 60 people. The number of coronavirus infections later traced to that wedding is nearly triple that number. It's also been linked to seven deaths. It's now clear that that wedding, held indoors in violation of state rules, was a so-called superspreader event. Dr. Nirav Shah is director of the Maine Center for Disease Control and Prevention. He laid out for us what contact tracers have learned.
- "There have now been approximately 177 total cases associated with that wedding. The bulk of those cases now have been among people who did not attend the August 7 wedding itself. Sadly, the seven individuals who have passed away with COVID-19 - none of those individuals themselves attended the wedding. This is really emblematic of how quietly, quickly and aggressively COVID-19 can spread even across disparate geographies across a state. Said Dr. Nirav Shah, director of the Maine Center for Disease Control and Prevention"

<https://www.npr.org/2020/09/16/913693778/how-1-maine-wedding-caused-hundreds-of-coronavirus-cases-and-7-deaths>

Moderna Shares the Blueprint for Its Coronavirus Vaccine Trial

- The biotech company Moderna released a 135-page document on Thursday that spells out the details of how it is conducting the late-stage trial of its coronavirus vaccine, and how safety and efficacy will be determined.
- The document suggests that the first analysis of the trial data may not be conducted until late December, and that there may not be enough information then to determine whether the vaccine works. Subsequent analyses, scheduled for March and May, are more likely to provide an answer.
- Scientists have been calling on vaccine makers to share their study plans, known as protocols, so that outside experts can evaluate them. Until now, none of the nine companies that are testing vaccines in late-stage clinical trials have done so.

<https://www.nytimes.com/2020/09/17/health/covid-moderna-vaccine.html>

<https://www.modernatx.com/sites/default/files/mRNA-1273-P301-Protocol.pdf>

Enough people have to take a Covid-19 vaccine for it to be efficient, Fauci says

- If too few Americans get a Covid-19 vaccine when it becomes available, it won't help reduce the spread of the deadly virus, the nation's top infectious disease official said.
- In an interview with The Wall Street Journal, Dr. Anthony Fauci addressed the risks of if not enough people take the vaccine.
- Even a third of Americans getting vaccinated against the coronavirus won't be enough, the director of the National Institute of Allergy and Infectious Diseases said.
- "It's a combination of how effective a vaccine is and how many people use it," Fauci said. "If you have a vaccine that is highly effective and not enough people get vaccinated, you're not going to realize the full, important effect of having a vaccine."

<https://www.cnn.com/2020/09/17/health/us-coronavirus-thursday/index.html>

Anaheim Officials Appeal To State For Theme Park Reopening Guidelines As OC Reports No New COVID-19 Deaths For Second Consecutive Day

- Officials in Orange County are calling on Sacramento for guidance on preparing to reopen Disneyland and other theme parks as the number of coronavirus hospitalizations and deaths continue to decline.
- Anaheim officials and the Sacramento-based California Attractions and Parks Association appealed publicly to the state for guidance on the reopening of Disneyland so they can better prepare. The state's March 14 shutdown order also affected the Anaheim Convention Center, the Honda Center and Angel Stadium.
- "What we need is guidance and an economic recovery roadmap so we know we won't go from coronavirus to a second Great Recession," city spokesman Mike Lyster said.

<https://losangeles.cbslocal.com/2020/09/15/anaheim-oc-theme-parks-reopen-coronavirus-shutdown/>

Riverside, San Luis Obispo Counties to Reopen More Businesses if COVID-19 Metrics Maintained| On 15 September, California health officials reported Riverside and San Luis Obispo counties are positioned to transition to the red tier if they maintained COVID-19 metrics for two weeks.

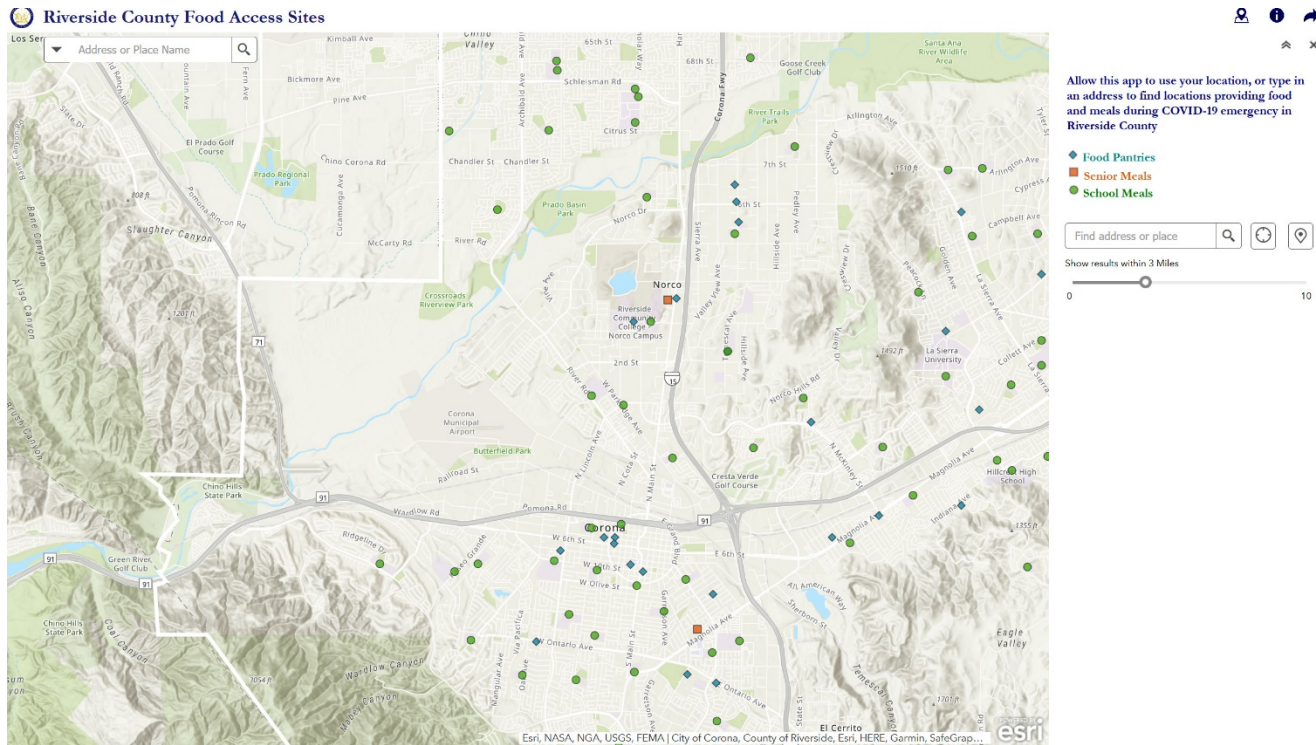
<https://www.desertsun.com/story/news/health/2020/09/15/riverside-county-can-reopen-if-covid-19-metrics-hold-two-weeks/5808156002/>

<https://www.sanluisobispo.com/news/coronavirus/article245750790.html>

Norco College Grab 'N Go Food Bags

- Every Friday during the Fall Term Students with a need can pick up food.
- Additional Food resources: Riverside County Food Access Sites

<https://countyofriverside.maps.arcgis.com/apps/webappviewer/index.html?id=52ca2b425fd14b2387f3676bf6db294e&extent=-13100249.8739%2C3944965.339%2C-12940037.8626%2C4040817.3725%2C102100>



The advertisement features a photograph of a young woman with long brown hair, smiling and holding a brown paper bag filled with food. The text "NORCO COLLEGE" is overlaid on the image. Below the photo, the text reads: "GRAB 'N GO FOOD BAGS", "September 11th", and "3-5pm". At the bottom, it states: "Food Services will be distributing food, while supplies last, on the lower level of the Center for Student Success, in front of the Corral." The entire advertisement is framed by a dark green border.

One Good Thing

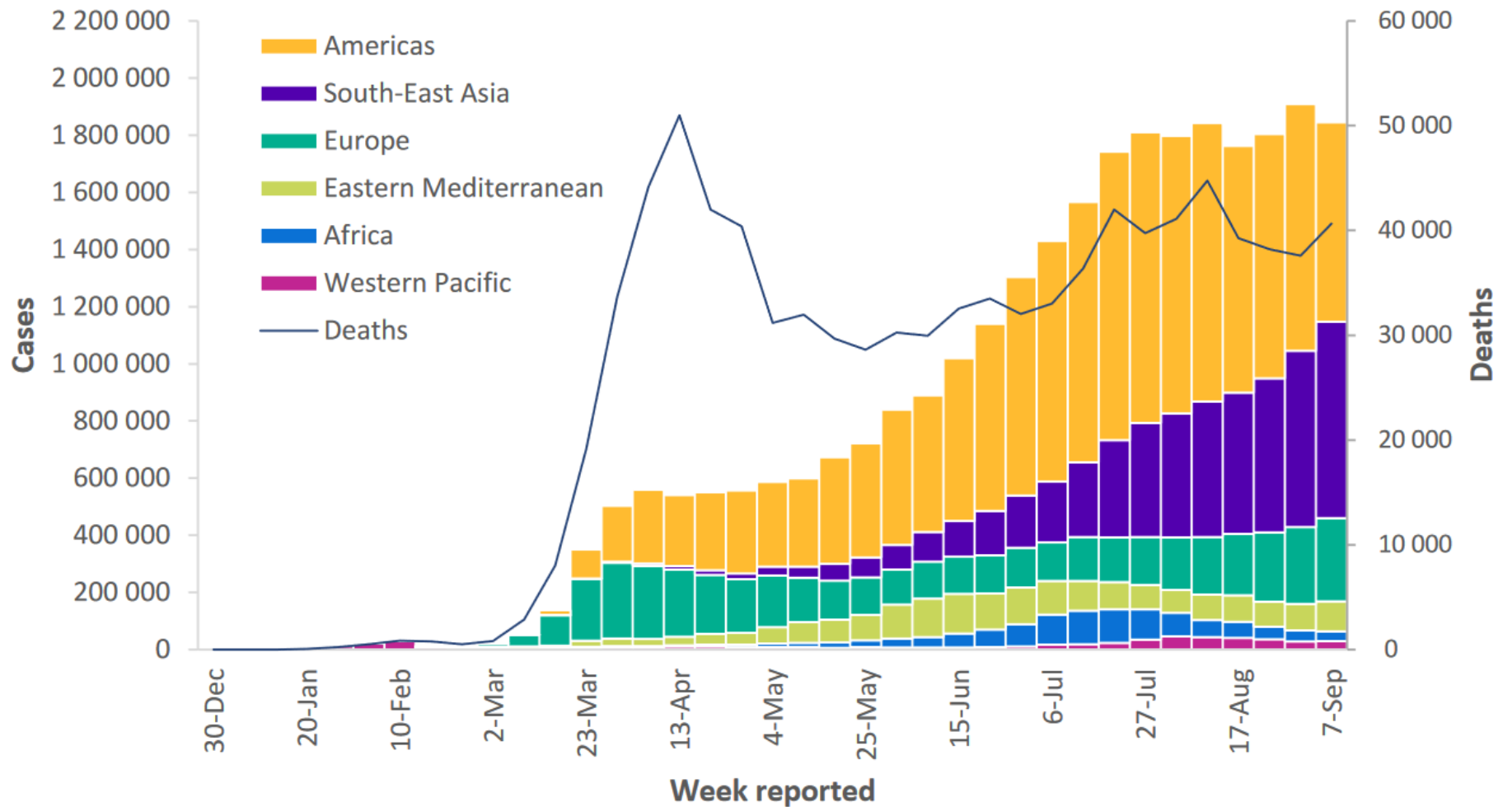
- Stories about the kindness of strangers and individuals who sacrifice for others.

<https://apnews.com/OneGoodThing> & <https://www.goodnewsnetwork.org/>

Global Data

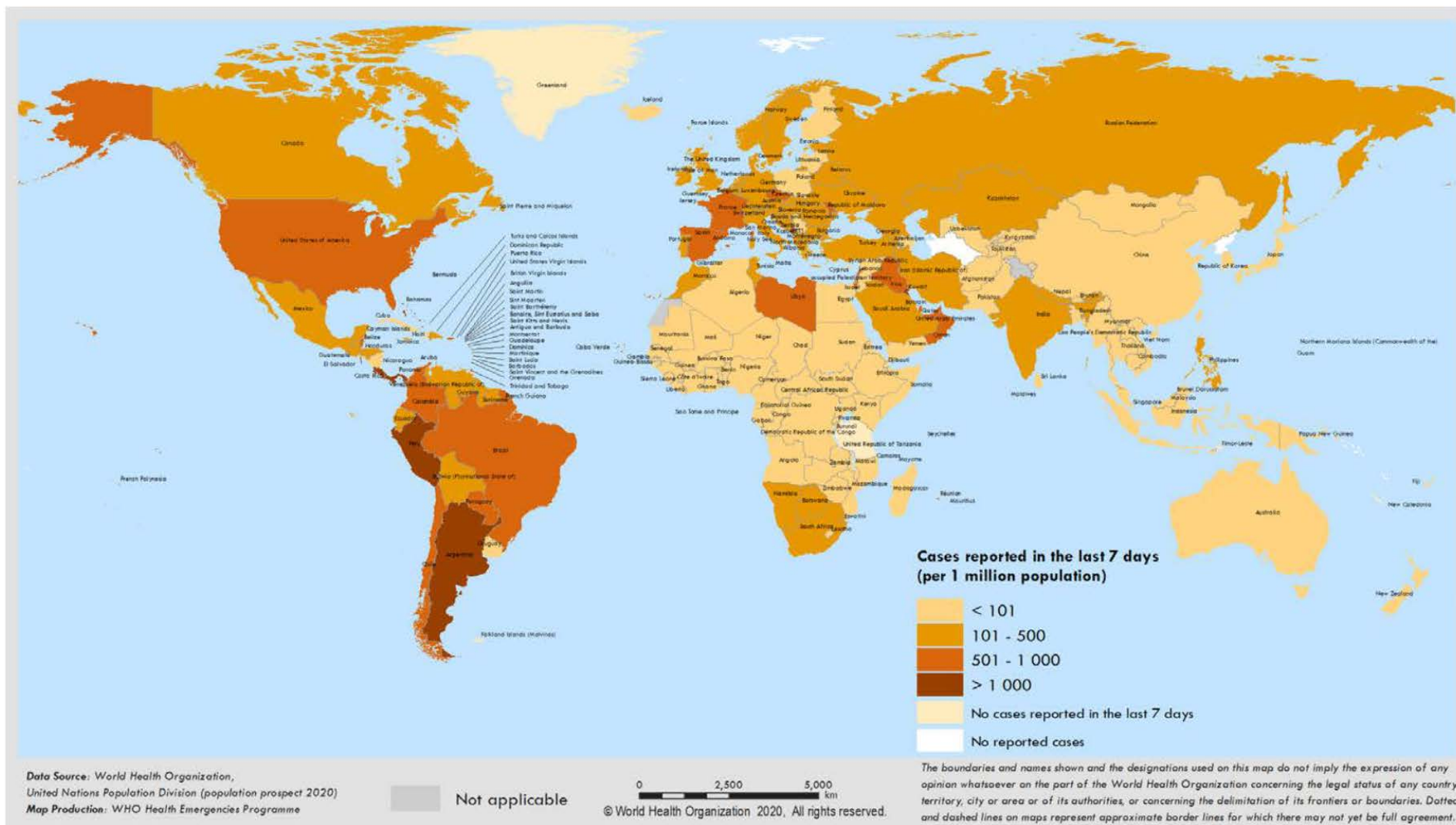
https://www.who.int/docs/default-source/coronaviruse/situation-reports/20200914-weekly-epi-update-5.pdf?sfvrsn=cf929d04_2

Figure 1: Number of COVID-19 cases reported weekly by WHO Region, and global deaths, 30 December 2019 through 13 September 2020**



**See data table and figure notes.

Figure 2. COVID-19 cases per million population reported in the last seven days by countries, territories and areas, 7 through 13 September 2020**



**See data, table and figure notes.



U.S. Data

<https://covid.cdc.gov/covid-data-tracker/#social-impact>

Social Impact COVID-19 Events in the United States

15 EVENTS
Past 48 hours

Map of news reports related to social impact events resulting from the COVID-19 outbreak in the United States, such as school closures, localized outbreaks, state of emergency declarations, etc.

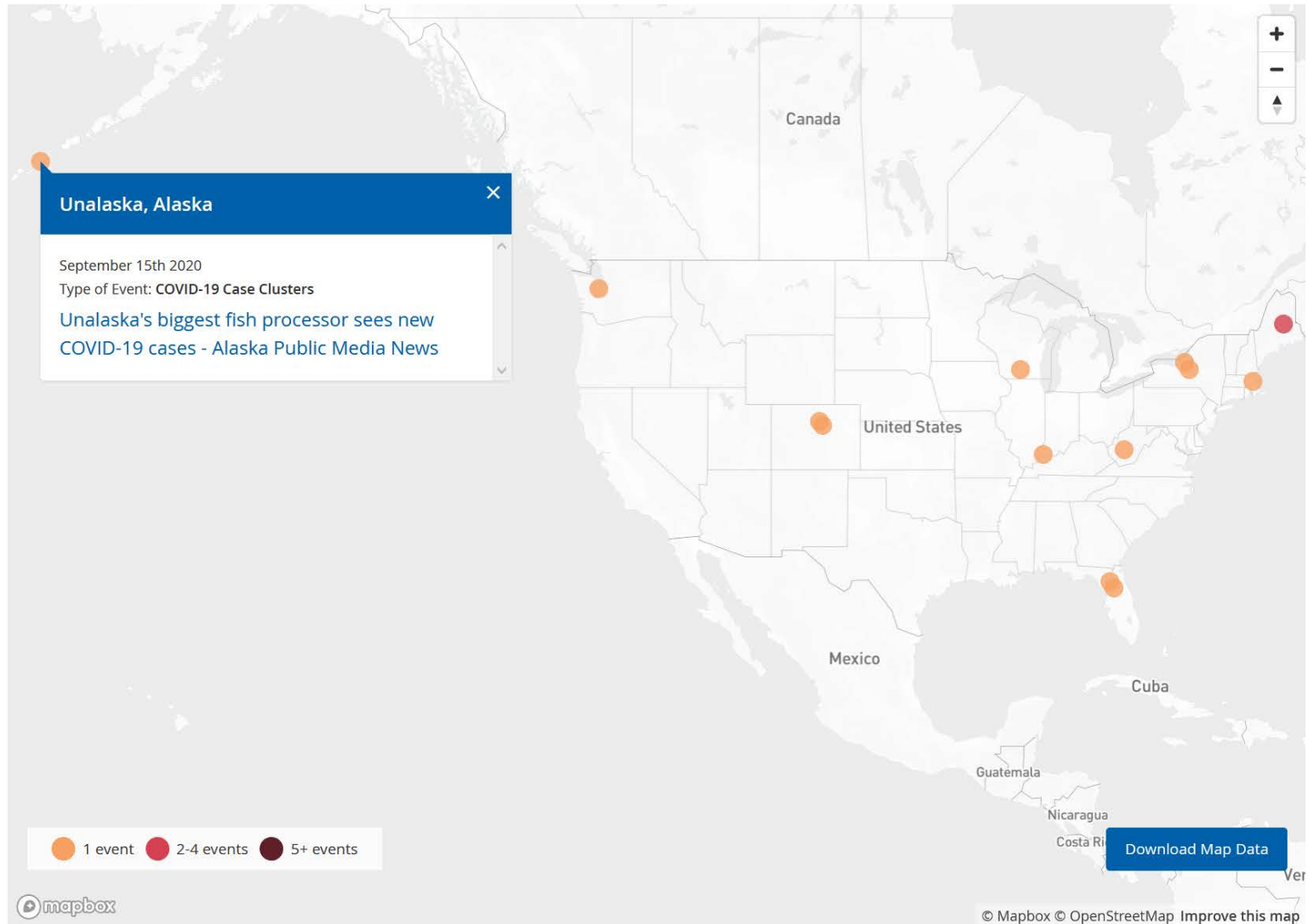
DATE RANGE

Past 48 hours

TYPE OF EVENT ?

COVID-19 Case Clusters

[About this Map](#) | Developed by [HealthMap](#)



US Coronavirus Cases and Deaths

Track COVID-19 data daily by state and county

Data Updated Sep 16, 2020

6,536,004
(+34,652 reported Sep 15)

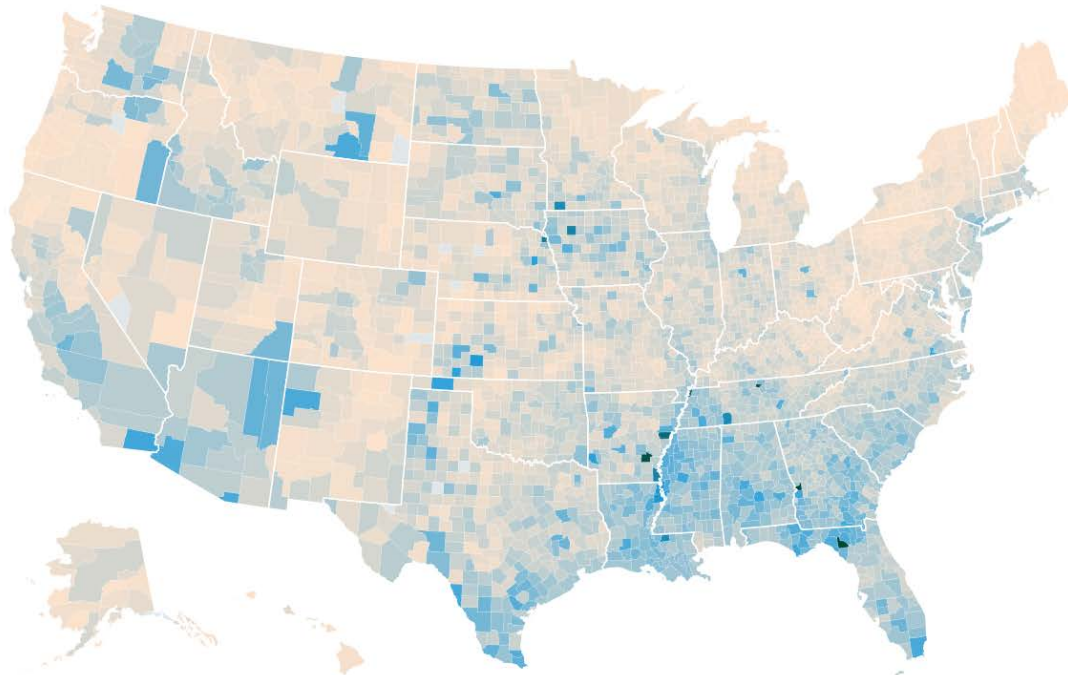
194,022
(+1,068 reported Sep 15)

COUNTY MAP

KNOWN CASES

KNOWN CASES (PER 100K)

DEATHS



<https://usafacts.org/visualizations/coronavirus-covid-19-spread-map/>

Personnel Deployed by State

State	Personnel (Approved - A / Deployed - D)												Total	
	CDC		CRAFT		DOD (Title-10)		NDMS		USPHS		VHA			National Guard Deployed under Title-32
	A	D	A	D	A	D	A	D	A	D				
AK		7							12				5	24
AL		1											27	28
AR													14	14
AZ									1				73	74
CA		8									1		175	184
CO		1											10	11
CT													35	35
DC		2											17	19
DE													16	16
FL											6		187	193
GA		31												31
GU						26			1				22	49
HI		1							21	19	19		79	139
IA													34	34
ID													1	1
IN		2											57	59
KS													42	42
LA													88	88
MA											1		214	215
ME													8	8
MI													61	61
MN		13											28	41
MO		3											118	121
MS											5		75	80
MT							9		5				2	16
Multiple									6					6
NC									1		2		10	13
ND		1											18	19
NE													7	7
NH													54	54
NM		1											43	44
NV													67	67
NY		2											36	38
OH													129	129
OK													16	16
PA													60	60
PR		8												8
RI													26	26
SC													75	75
SD													93	93
TN													80	80
Tribal		38												38
TX		1				93			4		1		180	279
UT		1											24	25
VA		11											2	13
VI		8												8
VT													14	14
WA		8									1		79	88
WI		1											80	81
WV		6											78	84
WY													8	8
Total		155		0		119		9	51		55		2,567	2,956

Total Critical Supplies Delivered by State																
Entity	Surgical Masks	Face Masks	KN-95 Masks	N-95 Masks	Face Shields	Gloves	Non-Surgical Gowns	Surgical Gowns	PAPR	Human Remains Pouches	Tyvek/ Coveralls	Boot covers	Goggles	Vents	Abbott ID Now Devices	Tests
AK	206,063	433,027	117,000	321,394	120,205	350,252	118,520	41,542			1,791			100	66	92,280
AL	442,582	3,263,828	2,187,000	2,261,701	123,154	757,656	601,188	59,700			6,185		316		42	38,400
AR	651,434	600,829	504,000	769,047	112,762	514,682		92,426			3,740				22	27,960
AS	40,922	21,860		65,279	18,386	77,070	17,340	7,258			6,443		1,050	10	2	
AZ	676,477	1,255,488	3,400	585,855	562,833	1,153,208	1,092,976	71,172	1,329		29,206		100,000	230	26	27,888
CA	3,944,929	5,473,616	852,200	3,094,840	577,062	2,036,212	59,111	416,017			58,072		188	1,270	65	96,000
CO	617,764	1,676,643	6,001,000	560,122	1,108,425	628,636	500,000	90,361			17,311		161,100	140	15	27,792
CT	965,824	3,119,170		251,186	200,469	3,437,068	16,600	102,497			162,324			350	15	12,072
DC	417,582	1,208,775		754,677	71,201	789,242	30,200	61,867			41,900			200	17	14,976
DE	244,665	574,966		77,434	72,343	691,008	6,480	32,078	191		13,142	900		50	15	23,568
FL	1,148,742	39,229,260		3,422,824	227,699	1,070,772		191,259			19,762			280	37	44,688
FM	4,704	18,419		1,974	896	2,600		730			4			30		
GA	768,836	12,953,536	39,400	1,740,690	411,275	2,489,064	1,353,958	222,723			178,610			150	21	38,880
GU	283,390	1,679,532	2,736,500	44,017	32,912	84,904	16,950	41,608	160		1,030		4,650	84	2	
HI	235,857	236,128	601,720	348,222	43,079	224,724		35,368			8,830			80	74	71,880
IA	451,235	1,552,297	504,000	148,368	125,697	345,442		47,364	1,450		12,904				20	36,984
ID	315,357	4,052,203	5,400,000	121,090	162,807	332,974	4,233,060	36,842			18,823		21,300		15	25,440
IL	1,585,858	7,936,401	4,712,380	6,710,984	545,230	7,169,656	1,988,120	223,230	90	4,700	149,044			1,070	30	46,896
IN	1,040,683	2,437,933	3,502,000	1,505,972	187,793	860,534		71,824	450	1,000	309,476	486		110	15	30,864
KS	1,021,434	579,447	3,720,500	1,071,376	313,402	2,920,682	222,700	92,426	550	3,000	314,282	640	119		25	32,400
KY	422,922	467,154	40,000	797,082	130,883	526,202	80,216	56,566			6,928				15	29,616
LA	574,800	3,365,795	512,000	3,135,143	424,527	2,010,474		231,790		4,895	82,894	50,000		390	245	158,376
MA	737,120	1,300,017		1,761,976	369,557	627,908	10,000	99,965	300	1,000	442,627			400	15	31,248
MD	705,438	6,710,224	3,680,880	5,871,074	328,789	600,181	159,780	87,610	3,336	20,000	54,810	2,400	1,096	490	26	28,080
ME	234,393	652,734		263,787	42,801	230,914	6,150	49,960			7,630				15	27,744
MH	2,434	16,773		1,022	464	1,346		378			2			10		
MI	837,518	3,892,094	2,448,000	11,089,240	318,671	801,930	1,502,176	121,703	260		25,570	50,000	150	1,200	15	33,240
MN	923,505	2,068,133	144,500	2,464,519	92,297	1,352,290	185,716	63,430		3,000	1,959				27	28,632
MO	518,001	2,780,502	3,000	2,179,169	194,399	855,996		70,284	80		23,291		149,500		19	33,672
MP	55,948	16,726		25,029	8,272	74,430		6,806	40		823			29	2	
MS	701,711	4,692,411	1,000	1,846,765	215,903	670,088		123,850	120		7,873				15	27,528
MT	218,859	2,323,544		1,149,886	40,611	224,326	939,998	33,448			1,801			4	15	31,200

Source: RSS Resource Aggregation, FEMA Data Analytics, ASPR Operational Data Analytics, September 15, 2020
Abbott ID Now Devices/Test Kits: Testing and Diagnostics Workgroup Update, September 15, 2020

Total Critical Supplies Delivered by State (Continued)

Entity	Surgical Masks	Face Masks	KN-95 Masks	N-95 Masks	Face Shields	Gloves	Non-Surgical Gowns	Surgical Gowns	PAPR	Human Remains Pouches	Tyvek/ Coveralls	Boot covers	Goggles	Vents	Abbott ID Now Devices	Tests	
NC	1,181,551	4,949,924	500,000	1,312,232	114,460	1,069,154	502,140	257,384			2,162	1,050	53			22	28,488
ND	954,337	234,379	2,000	481,190	37,077	629,300		30,474	1,575		25,806					15	24,768
NE	499,217	2,310,435	300,000	299,288	203,127	604,930	1,281,740	38,984	671		4,917		200,000			15	30,120
NH	253,849	358,223		263,442	42,697	217,612	6,646	35,056	50		7,313					15	29,160
NJ	2,027,120	2,766,970	2,452,760	3,702,523	2,437,569	13,413,070	2,986,680	157,935	400		1,163,797		177,000	2,005		15	29,880
NM	1,197,889	765,590	2,500	529,468	85,619	1,006,330		40,340			15,757	900		50		15	16,512
NV	297,285	865,293	636,100	641,707	54,775	290,680	64,640	44,904	3,445		1,863			270		15	29,880
NY	2,738,590	26,498,176	1,509,970	10,189,860	590,902	3,081,116	194,360	298,810		13,165	849,227		4,080	4,870		36	49,800
OH	672,263	5,801,839	9,000,000	2,821,922	182,291	6,614,552	1,734,880	107,778	4,000	1,888	5,685					15	32,016
OK	685,447	1,124,248		731,726	64,947	279,304	153,000	52,382		600	5,826					22	26,184
OR	416,601	2,051,794	6,632,000	1,383,820	245,051	616,724	1,578,340	138,898			3,630			150		21	28,368
PA	2,069,130	5,491,473	1,703,860	7,285,132	1,165,639	2,383,206	3,772,987	172,761		15,000	317,959		29,750			76	64,032
PR	344,775	2,147,500	262,000	516,434	250,928	980,908	494,496	52,200			43,284		48			20	27,840
PW	802	16,544		336	152	444		124			0			10			
RI	438,003	5,259,330		233,647	69,905	376,926		107,828		250	101,369			100		15	24,360
SC	465,505	1,479,157	60,500	394,762	73,975	301,448		58,600			1,933					15	28,872
SD	230,827	1,757,764	800,000	326,114	113,313	367,386	205,473	51,482		100	8,460		3,000			15	29,448
TN	677,882	951,048	451,080	1,357,608	119,006	722,302	436,220	96,531		1,000	9,681	250	1,207			15	38,592
TX	1,792,118	17,772,296	301,250	1,360,358	440,817	2,506,523	40,000	337,484		8,154	26,179	2,133	800,144	600		32	68,472
UT	270,189	1,314,288	200,000	829,614	87,329	254,284	1,165,880	45,354	80		2,365					15	24,528
VA	610,221	4,000,889	126,800	314,357	238,039	5,824,316	77,012	82,620			65,157					17	31,416
VI	99,054	79,212	55,600	84,521	8,730	109,060	85,220	59,020			820			30		21	720
VT	345,702	1,305,645	50,000	182,940	67,875	384,368	6,150	55,827		500	9,949					15	4,440
WA	856,348	8,028,975	9,382,751	1,781,660	147,201	1,137,890		450,606	80		11,022			580		15	28,248
WI	504,163	4,761,409	678,640	1,342,308	160,599	669,346	317,100	166,984		1,500	41,050					15	29,496
WV	1,050,539	1,610,195		457,888	234,359	253,206	155,000	45,574	200		131,510	900	12,146			15	30,288
WY	169,343	2,062,509	100,000	302,334	136,265	460,538	131,000	106,060	400		2,285		3,150			15	26,232
Tribal-All	135,050	6,093,600	159,770	277,010	72,664	1,204,300	117,927	71,906	1,825	315	16,459	13,300	114,100	267		501	1,176
Federal Agencies	503,652	39,088,873		7,260,236	596,055	3,311,019	1,402,570	30,567	3,258		8,303	3,750	53,800	23		170	42,048
Grand Total	42,484,439	267,537,043	73,078,061	101,106,181	15,226,170	82,982,713	30,050,700	6,078,555	24,340	80,067	4,892,855	126,709	1,837,947	15,632	2,126	1,943,688	

Source: RSS Resource Aggregation, FEMA Data Analytics, ASPR Operational Data Analytics, September 15, 2020
Abbott ID Now Devices/Test Kits: Testing and Diagnostics Workgroup Update, September 15, 2020

CDC Guidance Documents

<https://www.cdc.gov/coronavirus/2019-ncov/communication/guidance-list.html?Sort=Date%3A%3Adesc>

[COVID-19 Parental Resources Kit – Childhood](#)

Children’s social, emotional, or mental well-being maybe impacted by the pandemic. Learn what you can do to help ensure their well-being.

Date: 9/15/20

Audience: [General Public](#)

[Operational Considerations for Personal Protective Equipment in the Context of Global Supply Shortages for Coronavirus Disease 2019 \(COVID-19\) Pandemic: non-US Healthcare Settings](#)

Considerations for personal protective equipment (PPE) in the context of global supply shortages in non-US healthcare settings.

Date: 9/14/20

Audience: [Healthcare Facilities](#), [Healthcare Professionals](#)

[Guidance for General Population Disaster Shelters During a Pandemic](#)

Date: 9/14/20

Audience: [Colleges and Universities](#), [First Responders](#), [Healthcare Facilities](#), [Healthcare Professionals](#), [High-Risk Populations](#), [Public Health Professionals](#), [Schools](#), [State and Local Government](#)

[Interim Operational Considerations for Public Health Management of Healthcare Workers Exposed to or with Suspected or Confirmed COVID-19: non-U.S. Healthcare Settings](#)

These recommendations are intended to be used by healthcare facilities and public health authorities in non-US healthcare settings, particularly focusing on low- and middle-income countries, assisting with the management of HCWs exposed to a person with confirmed or suspected COVID-19.

Date: 9/11/20

Audience: [Healthcare Facilities](#), [Healthcare Professionals](#)

[Know When to Delay your Travel to Avoid Spreading COVID-19](#)

Advice on when and how long people should delay their domestic or international travel to avoid spreading COVID-19.

Date: 9/10/20

Audience: [Travel](#)

[Additional COVID-19 Guidance for Caregivers of People Living with Dementia in Community Settings](#)

People caring for loved ones with dementia can take steps to prevent illness and stay healthy during the COVID-19 pandemic.

Date: 9/10/20

Audience: [High-Risk Populations](#)

[Implementing Safety Practices for Critical Infrastructure Workers Who May Have Had Exposure to a Person with Suspected or Confirmed COVID-19](#)

Find CDC's guidance for critical workers on how to protect workers who may have been exposed to COVID-19.

Date: 9/10/20

Audience: [Businesses](#)

[Standard Operating Procedure \(SOP\) for Triage of Suspected COVID-19 Patients in non-US Healthcare Settings: Early Identification and Prevention of Transmission during Triage](#)

This document is provided by CDC and is intended for use in non-US healthcare settings. This document is intended for healthcare facilities that are receiving or are preparing to receive patients with suspected or confirmed coronavirus disease 2019 (COVID-19).

Date: 9/10/20

Audience: [Healthcare Professionals](#)

[Operational Considerations for Community Isolation Centers for COVID-19 in Low-Resource Settings](#)

This document describes how to set up a Community Isolation Center for COVID-19 patients who are not able to isolate at home, but may not be ill enough to be hospitalized. This document is to be used in global settings, not in the US.

Date: 9/9/20

Audience: [Community Settings](#)

[Contact Tracing for COVID-19](#)

This section provides steps and consideration that jurisdictions can use to develop a protocol for the tracing of close contacts.

Date: 9/9/20

Audience: [Public Health Professionals](#)

[Standard Operating Procedure \(SOP\) for Triage of Suspected COVID-19 Patients in non-US Healthcare Settings: Early Identification and Prevention of Transmission during Triage](#)

This document is provided by CDC and is intended for use in non-US healthcare settings. This document is intended for healthcare facilities that are receiving or are preparing to receive patients with suspected or confirmed coronavirus disease 2019 (COVID-19).

Date: 9/9/20

Audience: [Healthcare Professionals](#)

[Cleaning and Disinfection for Community Facilities](#)

Guidance on the cleaning and disinfection of rooms or areas of those with suspected or with confirmed

Date: 9/9/20

Audience: [Community Settings](#)

California Takes Action to Combat COVID-19

<https://www.gov.ca.gov/california-takes-action-to-combat-covid-19/>



State Data

<https://covid19.ca.gov/>
<https://update.covid19.ca.gov/#top>
<https://www.cdph.ca.gov/Programs/CID/DCDC/Pages/Immunization/ncov2019.aspx#>

New website and guidance “Safer Economy Blueprint”

<https://covid19.ca.gov/safer-economy>

Statewide industry guidance to reduce risk

<https://covid19.ca.gov/industry-guidance/#top>
<https://www.cdph.ca.gov/Programs/CID/DCDC/Pages/Guidance.aspx>

Data models

<https://covid19.ca.gov/data-and-tools/>

COVID-19 Hospitals

<https://public.tableau.com/views/COVID-19HospitalsDashboard/Hospitals?%3Aembed=y&%3AshowVizHome=no>

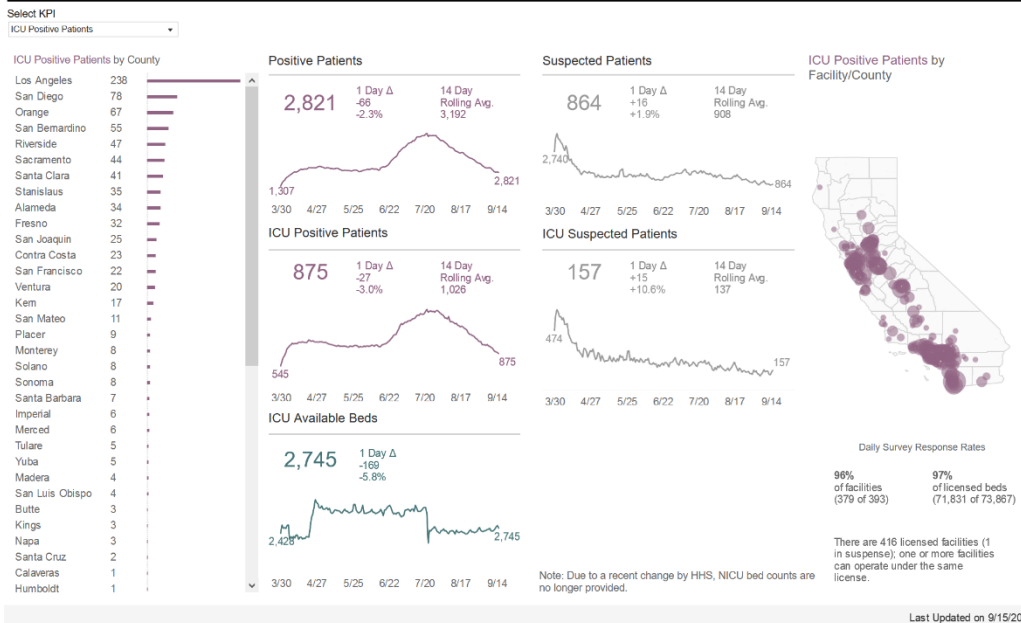


Office of Governor
GAVIN NEWSOM

Press Releases, Executive Orders, Media Advisories, Proclamations, and “On the Record” Column

<https://www.gov.ca.gov/newsroom/>

COVID-19: Hospitals



California COVID-19 By The Numbers

September 16, 2020
Numbers as of September 15, 2020

CALIFORNIA COVID-19 SPREAD

762,963 (+2,950)
CASES

Ages of Confirmed Cases

- 0-17: 78,192
- 18-49: 457,919
- 50-64: 144,116
- 65+: 81,822
- Unknown/Missing: 914

Gender of Confirmed Cases

- Female: 385,393
- Male: 371,046
- Unknown/Missing: 6,524

14,615 (+164)

Fatalities

Hospitalizations

Confirmed COVID-19
2,821/875
Hospitalized/in ICU

Suspected COVID-19
864/157
Hospitalized/in ICU

For county-level hospital data:
bit.ly/hospitalsca

Your actions save lives.

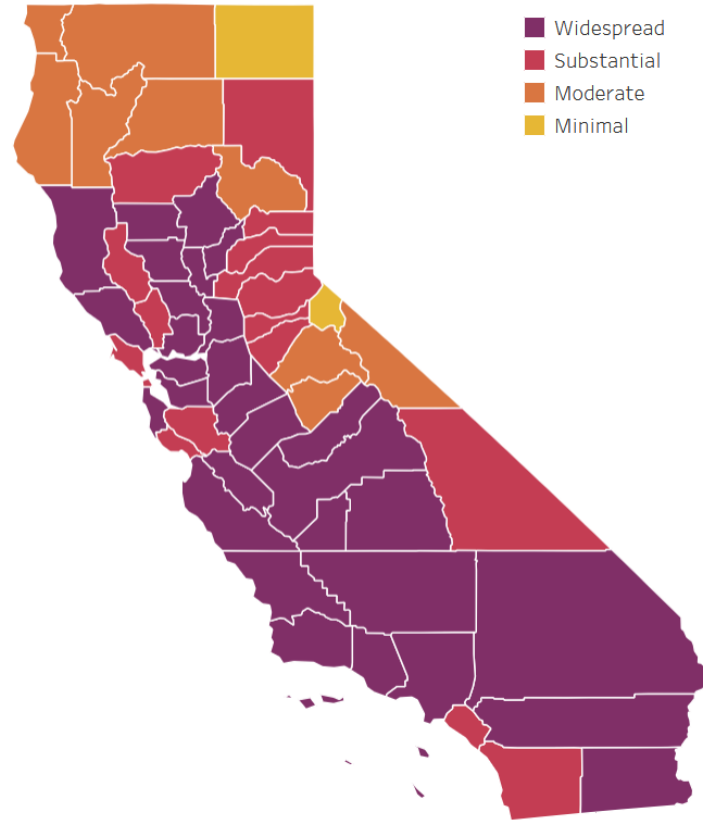
For county-level data:
data.chhs.ca.gov
covid19.ca.gov



Statewide Metrics

7.7
New COVID-19 positive cases per day per 100K

4.2%
Positivity rate



Data shown is for 9/15 tier assignments

🔍 + a b | e a u
🔗
📄
🖨️

	Higher Risk → Lower Risk of Community Disease Transmission			
	Widespread Tier 1	Substantial Tier 2	Moderate Tier 3	Minimal Tier 4
Measure*				
Adjusted Case Rate for Tier Assignment** (Rate per 100,000 excluding prison cases, 7 day average with 7 day lag)	>7	4-7	1-3.9	<1
Testing Positivity*** (Excluding prison cases, 7 day average with 7 day lag)	>8%	5-8%	2.4-9%	<2%

[Getting Vaccinated Against Flu More Important Than Ever](#)

September 16, 2020 – In an effort to prevent a "twindemic" of COVID-19 and seasonal influenza, the California Department of Public Health (CDPH) is urging Californians to get vaccinated against the flu now to protect yourself and your loved ones.

[State Officials Announce Latest COVID-19 Facts](#)

September 16, 2020 - The California Department of Public Health (CDPH) today announced the most recent statistics on COVID-19.

[State Officials Announce Latest COVID-19 Facts](#)

September 15, 2020 - The California Department of Public Health (CDPH) today announced the most recent statistics on COVID-19.

[California Releases Request for Innovative Ideas for COVID-19 Specimen Collection and Transport](#)

September 14, 2020 — Today the California Department of Public Health, along with the California Department of General Services and the California Department of Technology, announced the release of a competitive procurement to support the state's response to COVID-19.

[State Officials Announce Latest COVID-19 Facts](#)

September 14, 2020 - The California Department of Public Health (CDPH) today announced the most recent statistics on COVID-19.

[State Officials Announce Latest COVID-19 Facts](#)

September 13, 2020 - The California Department of Public Health (CDPH) today announced the most recent statistics on COVID-19.



Riverside County Data

<https://www.rivcoph.org/coronavirus>

RUHS Public Health News:

- [Third round of business assistance grant applications to open Sept. 16 with expanded eligibility](#) - September 14, 2020
- More residents needed for COVID testing to slow the spread, move into red tier [English](#) / [Spanish](#) - September 10, 2020
- Riverside County health officials urge residents to take precautions because of smoke, ash from fires [English](#) / [Spanish](#) - September 8, 2020
- [Continue coronavirus safety measures during holiday weekend](#) - September 3, 2020
- Cool centers open during heatwave, COVID testing sites to close for the weekend [English](#) / [Spanish](#) - September 3, 2020
- Riverside County reports first flu-related death of 2020-21 influenza season [English](#) / [Spanish](#) - September 2, 2020
- [Riverside County Takes Action to Address Suicide, Celebrate Recovery](#) - September 1, 2020
- Slow the spread through social media and creative arts challenges [English](#) / [Spanish](#) - September 1, 2020
- Health officials report first case of MIS-C in child from western Riverside County [English](#) / [Spanish](#) - September 1, 2020
- [Adjusting Permitted Sector Activities](#) - August 31, 2020

<https://covid19.ca.gov/safer-economy/>

Riverside

WIDESPREAD

Many non-essential indoor business operations are closed [Understand the data](#).

Counties can restrict further. Check with your local health department to find out what restrictions apply.

New dashboard

Click [here](#) for more detailed city/community data and reports

Daily Epidemiology Summary updated 09-16-2020

https://www.rivcoph.org/Portals/0/Documents/CoronaVirus/September/Dashboard/3/Public%20Daily_COVID-19_Updates%20-%202020-09-16.pdf?ver=2020-09-16-145117-403×tamp=1600293094186

Riverside County Metrics

5.8

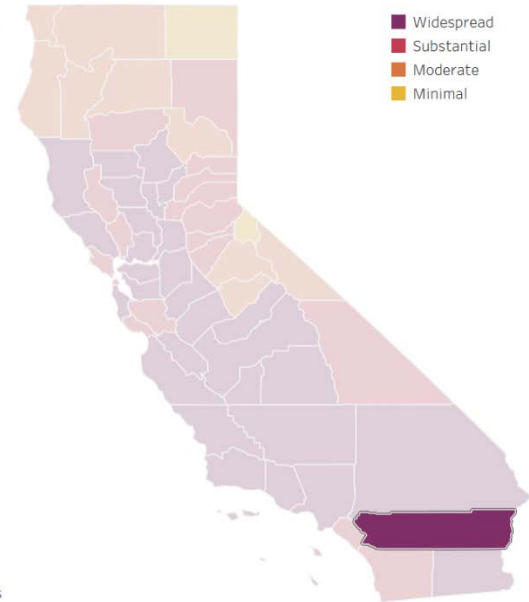
New COVID-19 positive cases per day per 100K

6.7

Adjusted case rate for tier assignment

6.4%


Positivity rate



Data shown is for 9/15 tier assignments

tableau

Weather

 National Weather Service San Diego, California		<h2>Weather Threats Outlook</h2> 11:00 AM PDT Wednesday September 16, 2020						
County	Zone	Wed 9/16	Thu 9/17	Fri 9/18	Sat 9/19	Sun 9/20	Mon 9/21	Tue 9/22
San Diego	Beach/Marine	Warm Smoke Aloft	Warm Smoke Aloft	Warm	None	None	None	None
	Coast	Warm Smoke Aloft	Warm Smoke Aloft	Warm	None	None	None	None
	Valleys	Very Warm Smoke Aloft	Very Warm Smoke Aloft	Very Warm	None	None	None	None
	Mountains	Very Warm Smoke Aloft	Very Warm Smoke Aloft	Warm	None	None	None	None
	Deserts	Very Warm Smoke Aloft	Very Warm Smoke Aloft	Very Warm	Warm	Warm	Warm	Warm
Orange	Beach	Warm Smoke Aloft	Warm Smoke Aloft	Warm	None	None	None	None
	Coast	Warm Smoke Aloft	Warm Smoke Aloft	Warm	None	None	None	None
	Inland	Very Warm Smoke Aloft	Very Warm Smoke Aloft	Warm	None	None	None	None
	Mountains	Very Warm Smoke Aloft	Very Warm Smoke Aloft	Warm	None	None	None	None
Riverside	Inland Empire	Very Warm Smoke Aloft	Very Warm Smoke Aloft	Very Warm	Warm	None	None	None
	Mountains	Warm Smoke Aloft	Warm Smoke Aloft	Warm	None	None	None	None
	Desert	Very Warm Smoke Aloft	Very Warm Smoke Aloft	Very Warm	Warm	Warm	Warm	Warm
San Bernardino	Inland Empire	Very Warm Smoke Aloft	Very Warm Smoke Aloft	Very Warm	Warm	None	None	None
	Mountains	Warm Smoke Aloft	Warm Smoke Aloft	Warm	None	None	None	None
	Desert	Very Warm Smoke Aloft	Very Warm Smoke Aloft	Warm	Warm	None	None	None

Impact Threat Levels
 None
 Low
 Medium
 High
 Extreme

Latest hazard threat table: <https://www.wrh.noaa.gov/sqx/event/dsstable.php>

<https://www.weather.gov/forecastpoints#>

Tropical Storm Sally



Tropical Depression Sally - FINAL (Advisory #25 as of 5:00 a.m. ET)

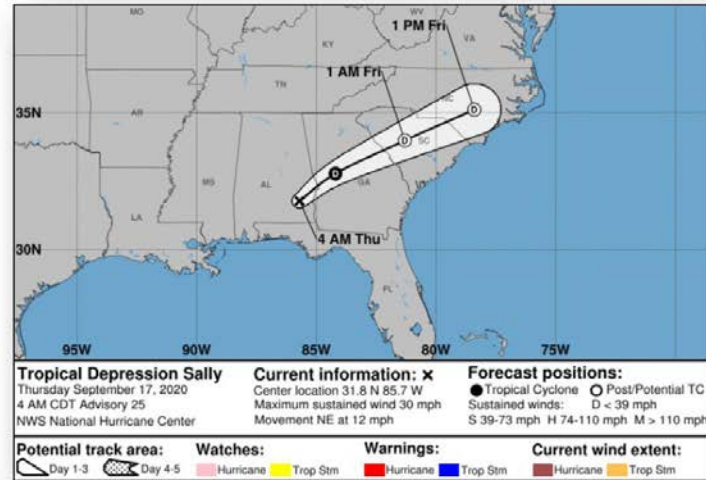
- 50 miles SE of Montgomery, AL
- Moving NE at 12 mph
- Maximum sustained winds 30 mph
- Continued weakening expected; expected to become a remnant low on tonight
- This is the last public advisory for Sally

Watches and Warnings

- There are no coastal watches or warnings in effect

Hazards Affecting Land

- **Rainfall:** Central GA 3-6 inches; Central to upstate SC 3-6 isolated amount of 10 inches; Western to central NC and southeast VA 4-6 isolated amount of 8 inches
- **Storm Surge:** Water levels will continue to recede today
- **Tornadoes:** Tornadoes may occur across southern GA and northern FL this morning and into eastern GA and the Carolinas this afternoon and evening

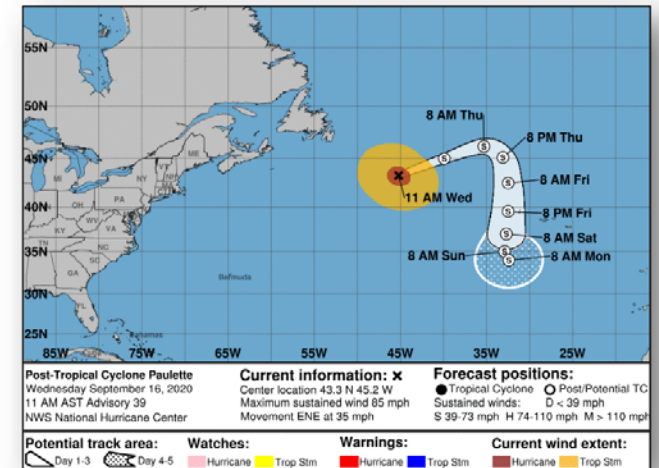


Tropical Cyclone Paulette



Post-Tropical Cyclone Paulette - FINAL (Advisory #39 as of 11:00 a.m. ET)

- 450 miles ESE of Cape Race, Newfoundland
- Moving ENE at 35 mph
- Maximum sustained winds 85 mph
- Becomes extratropical cyclone over North Atlantic
- Weakening is forecast during the next couple of days
- Last advisory on Post-Tropical Cyclone Paulette
- Hurricane force winds extend 80 miles
- Tropical storm force winds extend 255 miles



Tropical Outlook – Atlantic



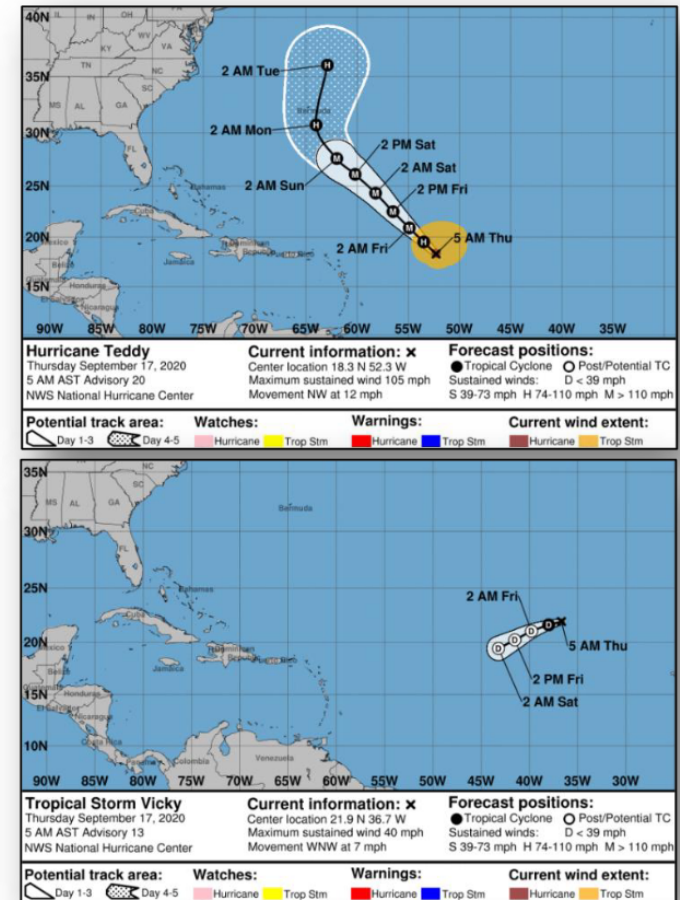
FEMA

Hurricane Teddy (CAT 2) (Advisory #20 as of 5:00 a.m. ET)

- 625 miles ENE of the Lesser Antilles
- Moving NW at 12 mph
- Maximum sustained winds 105 mph
- Expected to become a major hurricane over the next day or so
- Hurricane force winds extend outward up to 35 miles
- Tropical storm force winds extend 255 miles

Tropical Storm Vicky (Advisory #13 as of 5:00 a.m. ET)

- 925 miles WNW of the Cabo Verde Islands
- Moving WNW at 7 mph
- Maximum sustained winds 40 mph
- Expected to become tropical depression today and a remnant tonight
- Tropical storm force winds extend 35 miles



Tropical Outlook – Atlantic



Disturbance 1 (as of 8:00 a.m. ET)

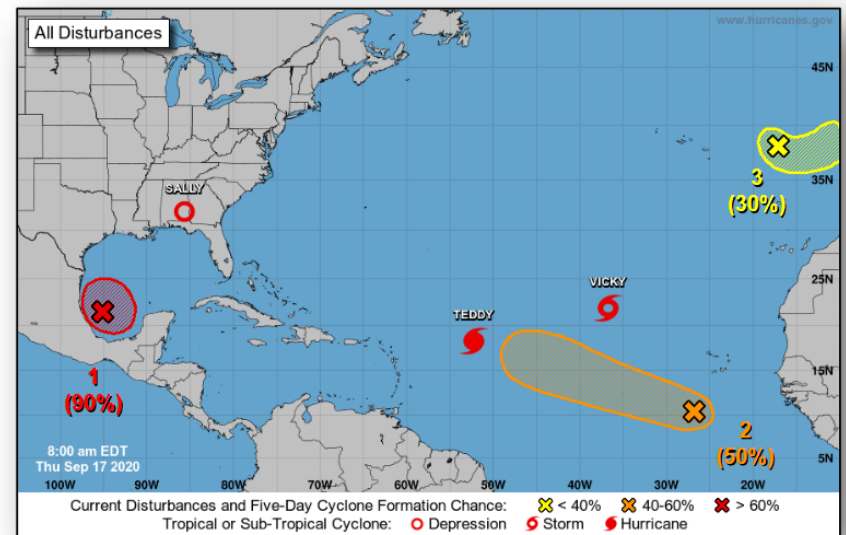
- Located over the SW Gulf of Mexico
- Gradually becoming more conducive for development; tropical depression or storm possible today
- Formation chance through 48 hours: High (90%)
- Formation chance through 5 days: High (90%)

Disturbance 2 (as of 8:00 a.m. ET)

- Few hundred miles SSW of the Cabo Verde Islands
- Environmental conditions expected to be conducive for development
- Formation chance through 48 hours: Medium (40%)
- Formation chance through 5 days: Medium (50%)

Disturbance 3 (as of 8:00 a.m. ET)

- Located several hundred miles E of the Azores
- Chances of acquiring some subtropical characteristics are decreasing
- Formation chance through 48 hours: Low (30%)
- Formation chance through 5 days: Low (30%)



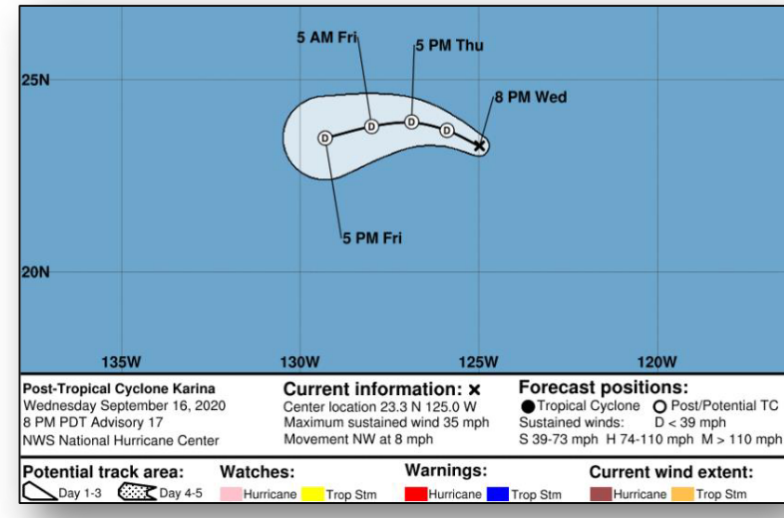
Tropical Outlook – Eastern Pacific



FEMA

Post-Tropical Cyclone Karina (Advisory #17 as of 11:00 p.m. ET)

- 960 miles W of the southern tip of Baja California, Mexico
- Maximum sustained winds 35 mph
- Moving NW at 8 mph
- Gradual weakening expected and will likely dissipate in a couple days



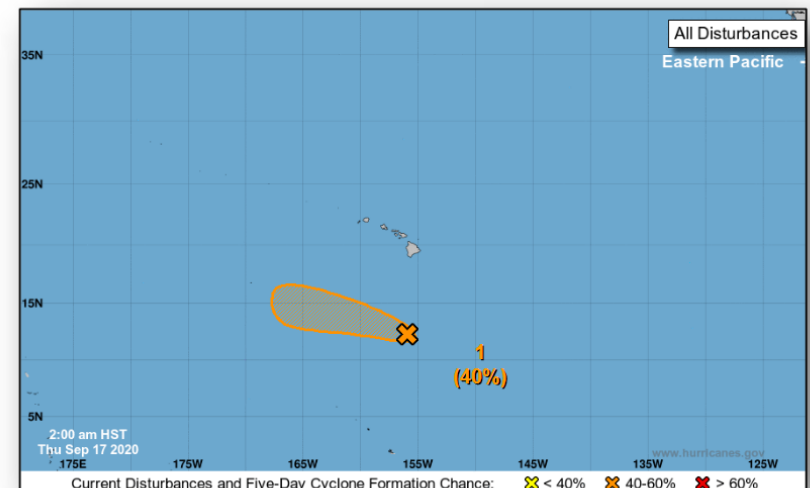
Tropical Outlook – Central Pacific



FEMA

Disturbance 1 (as of 8:00 a.m. ET)

- 500 miles S of Hilo, HI
- Conditions appear marginally conducive for development
- Formation chance through 48 hours: Medium (40%)
- Formation chance through 5 days: Medium (40%)



Wildfire

Wildfires – Western US



Situation: 94 large fires are currently burning uncontained from the West Coast across to the Rocky Mountains, covering a good portion of FEMA Regions 8, 9, and 10. 20 Fire Management Assistance Grants (FMAGs) have been approved. Mandatory evacuations remain in effect throughout the impacted areas due to fire danger and poor air quality. The U.S. Air Quality Index ranges from "Unhealthy to Hazardous" from Central California to northern Washington state. No unmet needs at this time.

FEMA Region VIII: 1 FMAG (CO)

- Acreage burned (FMAGs only): 102,596
- Homes / structures threatened: 3,581 / 4
- Homes / structures damaged: 0 (-2) / 0
- Homes / structures destroyed: 27 / 29
- Fatalities / Injuries: 0 / 10
- Evacuations: 1,100 (-21)

FEMA Region IX: 6 FMAGs (CA)

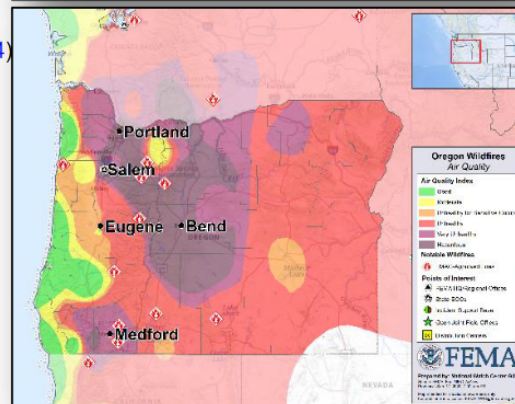
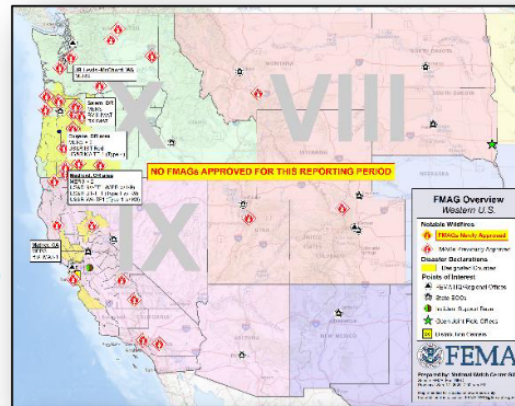
- Acreage burned (FMAGs only): 821,852 (+24,615)
- Homes / structures threatened: 51,856 (+2,657) / 1,321 (-144)
- Homes / structures damaged: 39 (+11) / 28 (+5)
- Homes / structures destroyed: 773 (+209) / 249 (+174)
- Fatalities / Injuries: 17 / 58 (+3)
- Evacuations: 36,707 (+6,387)

FEMA Region X: 12 FMAGs (OR-11; WA-1)

- Acreage burned (FMAGs only): 1,322,916 (+19,186)
- Homes / structures threatened: 97,126 (-22,400) / 1,743 (+914)
- Home / structures damaged: 135 (-2) / 155 (-2)
- Homes / structures destroyed: 1,489 (15) / 1,390 (+348)
- Fatalities / Injuries: 5 / 14 (+2)
- Evacuations: 174,123 (+428)

State Response

- CO EOC at Partial Activation (COVID-19)
- CA EOC at Full Activation (COVID-19 and Wildfires)
- OR & WA EOCs at Full Activation (COVID-19 & Wildfires)



Federal Response

- Declarations Approved – 3
 - Region VIII & Denver MOC monitoring
 - IMAT deployed to OR EOC
- Region IX RWC monitoring
 - IMAT deployed to CA EOC (Wildfires)
- Region X RRCC at Level II (Wildfires & COVID-19); Bothell MOC monitoring
 - IMAT deployed to OR EOC
 - ESF-13 activated; 1 IMT (Eugene) and 2 QRTs deployed to OR (Medford & Eugene) to support US&R teams
- Public Health Emergency declared in OR due to unhealthy/hazardous air quality (*HHS R10 SPOTREP as of 2:44 p.m. ET, Sep 16*)
- EPA conducting Rapid Needs Assessments for 2 counties in CA
- MERS: Salem, OR; Springfield, OR; Central Point, OR; Joint Base Lewis-McChord, WA; Mather, CA
- US&R:
 - Red IST & LNO deployed to OR EOC; IST Cache in Salem, OR
 - WA-TF1 deployed to Lane County, OR; UT-TF1 and NV-TF1 deployed to Talent, OR
 - MA-TF1 deploying to Eugene, OR

Current Large Incidents

September 17, 2020



- | | | | |
|----------------------------|-----------------------|--------------------------|-----------------------|
| 1 ECHO MTN. COMPLEX | 22 LIONSHEAD | 41 BOBCAT | 64 BEAR CREEK |
| 2 AUGUST COMPLEX WEST ZONE | 23 WHITE RIVER | 42 EL DORADO | 65 CINNABAR |
| 3 RED SALMON COMPLEX | 24 NORTH COMPLEX | 43 WOODHEAD | 66 DRUMMING |
| 4 SLATER | 25 CHIKAMIN | 44 VALLEY | 67 STATE CREEK |
| 5 ARCHIE CREEK | 26 NORTH BROWNSTOWN 2 | 45 BERNARD | 68 ETHER HOLLOW |
| 6 WOODWARD | 27 POWER LINE | 46 SUNNYSIDE COMPLEX | 69 GOSHEN |
| 7 AUGUST COMPLEX | 28 BRATTAIN | 47 NORTH CASCADE COMPLEX | 70 WILLIAM |
| 8 S. OBENCHAIN | 29 FORK | 48 CALLAHAN | 71 UPPER PROVO |
| 9 FOX | 30 BLUEJAY | 49 BUCK | 72 BRIDGER FOOTHILLS |
| 10 LNU LIGHTNING COMPLEX | 31 WOLF | 50 PORPHYRY | 73 LONE STAR |
| 11 BEACHIE CREEK | 32 SLINK | 51 GROUSE | 74 EAST FORK |
| 12 DEVIL | 33 COLD SPRINGS | 52 SHISSLER | 75 CENTER CREEK TRAIL |
| 13 CZU LIGHTNING | 34 MORAINÉ | 53 TRAP | 76 PINE GULCH |
| 14 THIELSEN | 35 PEARL HILL | 54 WARM SPRINGS | 77 GRIZZLY CREEK |
| 15 RIVERSIDE | 36 CREEK | 55 MARION | 78 MIDDLE FORK |
| 16 OR-WIF-200430 | 37 SQF COMPLEX | 56 LEGGIT | 79 WILLIAMS FORK |
| 17 BIG HOLLOW | 38 CUSTOMS ROAD | 57 LION CREEK | 80 WILTSE |
| 18 TWO FOUR TWO | 39 BULLFROG | 58 DOUBLE | 81 CAMERON PEAK |
| 19 DOLAN | 40 RATTLESNAKE | 59 BADGER | 82 SINGING HORSE 2 |
| 20 COLD CREEK | 41 WHITNEY | 60 BEAVER | |
| 21 DOWNEY CREEK | 42 INCHELIUM COMPLEX | 61 GARNET | |

Wildfire Summary – CA



FEMA

Fire Name (County, ST)	FMAG #	Acres Burned	Percent Contained	Evacuations	Structures (Homes / Other)			Fatalities / Injuries
					Threatened	Damaged	Destroyed	
California (6)								
Creek (Fresno and Madera, CA)	5348-FM-CA	228,025 (+8,000)	18%	M: 11,207 (-663) V: 0	H: 9,438 (-1,568) O: 50 (-200)	H: 37 (+11) O: 24 (+5)	H: 469 (+164) O: 243 (+75)	0 / 21
El Dorado (San Bernardino, CA)	5348-FM-CA	18,506 (+614)	63% (+2)	M: 3,467 V: 0	H: 26,031 O: 1,106 (+50)	H: 2 O: 4	H: 4 O: 6	0 / 12 (+1)
Slater (Siskiyou, CA)	5361-FM-CA	141,403 (+4,292)	10%	M: 1,000 V: 0	H: 5,120 (+4,220) O: 0	H: 0 O: 0	H: 150 O: 0	2 / 0
North Complex (Includes Bear Fire) (Butte, Plumas, and Yuba, CA)	5363-FM-CA (Bear Fire)	273,335	36% (+2)	M: 13,550 (+7,050) V: 0	H: 3 O: 6	H: 0 O: 0	H: 0 O: 0	15 / 9 (+1)
SQF Complex (Tulare, CA)	5373-FM-CA	114,320 (+7,219)	12%	M: 3,483 V: 0	H: 3,188 (+5) O: 0	H: 0 O: 0	H: 150 (+45) O: 0	0 / 14
Bobcat (Los Angeles, CA)	5374-FM-CA	46,263 (+4,490)	3%	M: 4,000 V: 0	H: 8,076 O: 159	H: 0 O: 0	H: 0 O: 0	0 / 2 (+1)

(Evacuations: M = Mandatory / V = Voluntary; Structures: H = Homes and Mixed Commercial/Residential / O = Non-residential Commercial/Other Minor Structures)

Wildfire Summary – OR



FEMA

Fire Name (County, ST)	FMAG #	Acres Burned	Percent Contained	Evacuations	Structures (Homes / Other)			Fatalities / Injuries
					Threatened	Damaged	Destroyed	
Oregon (11)								
Two Four Two (Klamath, OR)	5354-FM-OR	14,473 (-63)	29% (+8)	M: 966	H: 0	H: 18 (-3)	H: 8	0 / 0
				V: 0	O: 0	O: 15 (-36)	O: 40 (+12)	
*Beachie Creek/Lionshead Complex (Marion, Clackamas, Linn, and Jefferson, OR)	5356-FM-OR	380,554 (+5,899)	20% / 10%	M: 14,760	H: 10,507 (-3,466)	H: 106	H: 734	4 / 8 (+1)
				V: 0	O: 109	O: 98	O: 834 (+2)	
Holiday Farm (Lane, OR)	5357-FM-OR	170,637 (+4,064)	10% (+4)	M: 0	H: 8,224 (-15,232)	H: 11 (+1)	H: 372 (+11)	1 / 2 (+1)
				V: 0	O: 914 (+914)	O: 34 (+34)	O: 329 (+329)	
Echo Mountain and Kimberling Road Complex (Lincoln, OR)	5362-FM-OR	2,552	45% (+5)	M: 2,629 (-209)	H: 1,400 (-2,694)	H: 0	H: 100	0 / 1
				V: 0	O: 0	O: 0	O: 0	

* All numbers combined for this complex fire except for the containment percentage

(Evacuations: M = Mandatory / V = Voluntary; Structures: H = Homes and Mixed Commercial/Residential / O = Non-residential Commercial/Other Minor Structures)

Wildfire Summary – OR



FEMA

Fire Name (County, ST)	FMAG #	Acres Burned	Percent Contained	Evacuations	Structures (Homes / Other)			Fatalities / Injuries
					Threatened	Damaged	Destroyed	
Oregon (11) - Continuation								
Archie Creek (Douglas, OR)	5365-FM-OR	128,020 (+2,522)	20%	M: 1,728 (-267)	H: 687 (-858)	H: 0	H: 111 (+1)	0 / 0
				V: 0	O: 0	O: 7	O: 2	
South Obenchain (Jackson, OR)	5367-FM-OR	32,814 (+784)	25% (+5)	M: 673 (-52)	H: 5,237 (+25)	H: 0	H: 32 (+3)	0 / 2
				V: 0	O: 650	O: 0	O: 56 (+5)	
Riverside (Clackamas, OR)	5366-FM-OR	135,524	3%	M: 70,962	H: 69,296	H: 0	H: 33	0 / 1
				V: 0	O: 0	O: 0	O: 20	
Pike Road (Tillamook, OR)	5368-FM-OR	220	0%	M: 399	H: 1,355	H: 0	H: 2	0 / 0
				V: 956	O: 0	O: 0	O: 2	
Clackamas County Complex (Clackamas, OR)	5370-FM-OR	Unknown	0%	M: 80,000	H: Unknown	H: Unknown	H: Unknown	0 / 0
				V: 0	O: Unknown	O: Unknown	O: 10	
Brattain (Lake, OR)	5372-FM-OR	44,800 (+5,300)	20% (+3)	M: 600	H: 300	H: 0	H: 1	0 / 0
				V: 0	O: 5	O: 0	O: 0	
*Slater (Josephine, OR)	5369-FM-OR	Unknown	0%	*Note: Burning along the border of OR & CA – See under CA for fire details				

(Evacuations: M = Mandatory / V = Voluntary; Structures: H = Homes and Mixed Commercial/Residential / O = Non-residential Commercial/Other Minor Structures)

Wildfire Summary – WA



Fire Name (County, ST)	FMAG #	Acres Burned	Percent Contained	Evacuations	Structures (Homes / Other)			Fatalities / Injuries
					Threatened	Damaged	Destroyed	
Washington (1)								
*Cold Springs/Pearl Hill (Douglas and Okanogan, WA)	5351-FM-WA	413,322 (+740)	70% / 94% (+10)	M: 450	H: 120	H: 0	H: 96	0 / 0
				V: 0	O: 65	O: 1	O: 97	

* All numbers combined for this complex fire except for the containment percentage

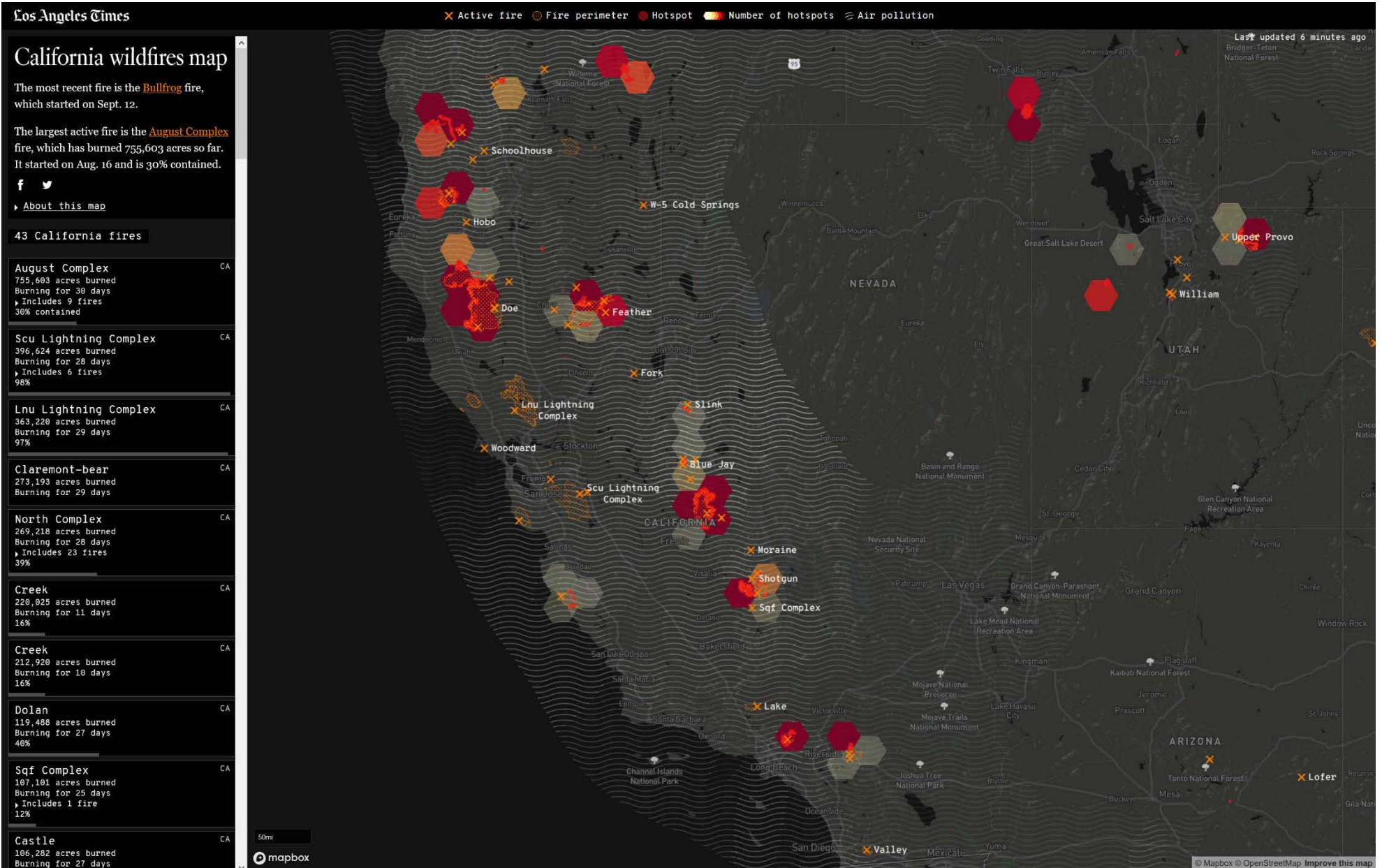
(Evacuations: M = Mandatory / V = Voluntary; Structures: H = Homes and Mixed Commercial/Residential / O = Non-residential Commercial/Other Minor Structures)

Wildfire Summary – Region VIII



Fire Name (County, ST)	FMAG #	Acres Burned	Percent Contained	Evacuations	Structures (Homes / Other)			Fatalities / Injuries
					Threatened	Damaged	Destroyed	
Colorado (1)								
Cameron Peak (Larimer, CO)	5349-FM-CO	102,596	8%	M: 1,100 (-21)	H: 3,581	H: 0 (-2)	H: 27	0 / 10
				V: 0	O: 4	O: 0	O: 29	

(Evacuations: M = Mandatory / V = Voluntary; Structures: H = Homes and Mixed Commercial/Residential / O = Non-residential Commercial/Other Minor Structures)



Air quality Index

<https://www.airnow.gov/> or <https://gispub.epa.gov/airnow/> or <https://www.epa.gov/smoke-ready-toolbox-wildfires>

Minimizing the effects of wildfire smoke during COVID-19

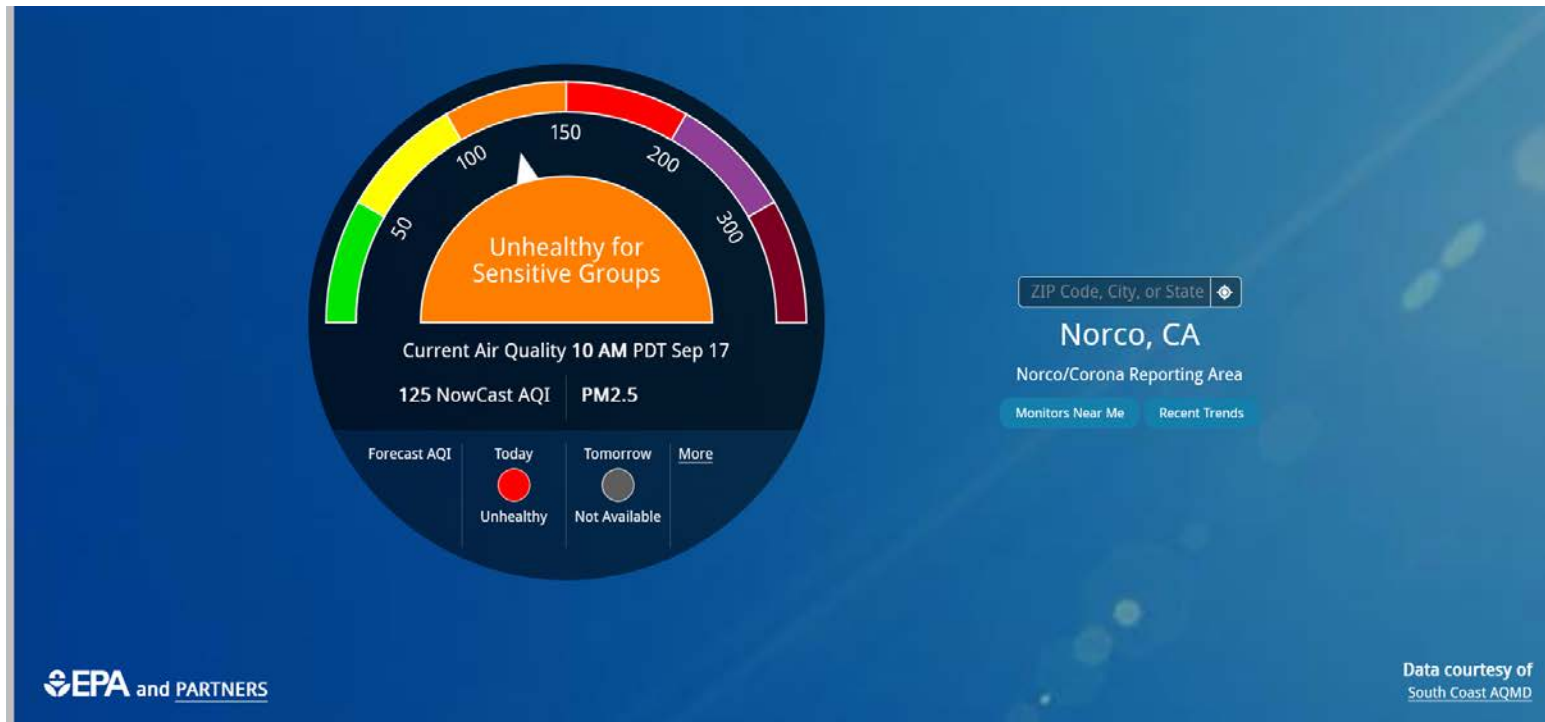
https://www.usfa.fema.gov/current_events/062920.html

[Populations vulnerable to smoke](#), including those with compromised immune systems, children under 18, pregnant women, adults 65 and over, and outdoor workers need to be [aware of this risk](#).

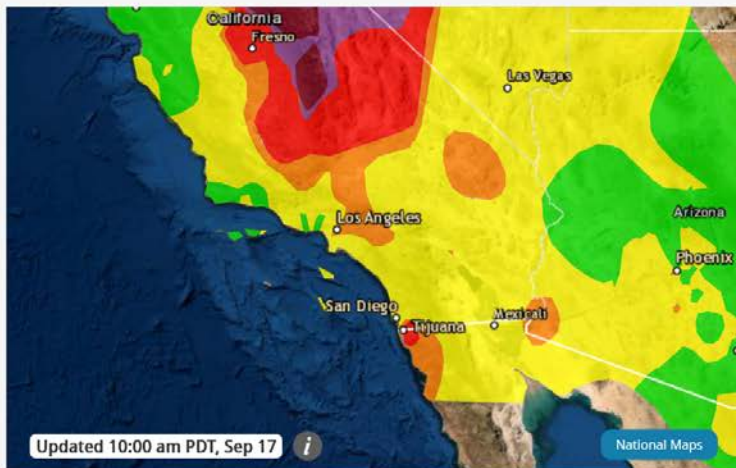
How to reduce risk from wildfire smoke

Inform your community about these actionable [steps that they can take to minimize the respiratory effects](#) of wildfire smoke.

- Check the [Air Quality index](#) or [Air Now](#) to make informed decisions about daily activities.
- If air quality is compromised outside, [seek cleaner air spaces](#) inside.
- Use air conditioners, heat pumps, fans and window shades to keep air space comfortably cool on hot days. Try not to use equipment that circulates in air from the outside.
- Limit outdoor exercise when it is smoky outside or choose lower-intensity activities to reduce smoke exposure.
- Use an N95 respirator for protection from wildfire smoke. (These respirators might be in short supply as front-line healthcare workers need them during the pandemic.)
- Ask healthcare providers to recommend protections against wildfire smoke. Stock up now on medicine and essential supplies to minimize outdoor shopping trips. Use home delivery if possible.
- In the event of an evacuation, follow the Centers for Disease Control and Prevention's recommendations for staying safe and healthy in a [public disaster shelter](#) during the COVID-19 pandemic.



Current Air Quality



Primary Pollutant
This pollutant currently has the highest AQI in the area.

▼ PM2.5 **125** Unhealthy for Sensitive Groups

People with heart or lung disease, older adults, children and teens – take any of these steps to reduce your exposure:

- Choose less strenuous activities (like walking instead of running) so you don't breathe as hard.
- Shorten the amount of time you are active outdoors.
- Be active outdoors when air quality is better.

Everyone else: Enjoy your outdoor activities.

► PM10 **96** Moderate

