



****Extraordinary Assumptions:** There are a lot of different data sources in this report not all of them match but aid to provide an overall picture of the current situation. COVID-19 Data Source Comparison - https://covid-19.splunkforgood.com/covid_19_datasource_comparison

Daily Situation Summary

Thursday, August 20, 2020

As of 10:00 AM

COVID-19 by the Numbers

08/20/2020	Riverside	Imperial	Kern	Los Angeles	Orange	San Bernardino	San Diego	San Luis Obispo	Santa Barbra	Ventura	California	United States	Global
Total Cases	48,741	9,041	27,142	226,006	43,938	43,224	35,378	2,553	7,499	9,587	644,751	5,506,929	22,256,220
New Cases	294	73	164	1,788	279	397	214	18	27	51	5,920	46,500	263,601
Total Cases Per Capita	2,045	5,017	3,074	2,238	1,389	2,024	1,071	907	1,690	1,130	1,647	1,668	290
New Cases Per Capita	12	41	19	18	9	19	6	6	6	6	15	14	3
Recovered	25,992	9,153	9,007	Not Reported	35,860	34,550	30,226	2,131	7,196	7,383	267,521	3,063,412	15,397,100
Total Deaths	917	265	228	5,392	833	621	638	20	82	98	11,686	172,416	782,456
New Deaths	4	0	12	57	18	5	5	1	1	1	163	1,404	6,554
Deaths Per Capita	38.48	147.05	25.82	53.40	26.33	29.08	19.32	7.11	18.48	11.56	29.85	52.23	10.20
Presumptive active cases	21,832	-377	17,907		7,245	8,053	4,514	402	221	2,106	365,544	2,271,101	6,076,664
% of State's Cases	7.56%	1.40%	4.21%	35.05%	6.81%	6.70%	5.49%	0.40%	1.16%	1.49%	11.71%	24.74%	
Currently in Hospitals	388	28	179	1,898	459	500	280	19	61	125	6,212		
Total Hospital Beds	6,028	259	1,319	19,790	5,788	3,862	6,742	451	666	1,317	70,020		
Currently in ICU	90	11	66	428	118	123	91	5	20	31	1,557		
ICU Beds Available	89	11	39	852	223	146	283	19	51	49	2,464		
Case Fatality Rate	1.9%	2.9%	0.8%	2.4%	1.9%	1.4%	1.8%	0.8%	1.1%	1.0%	1.8%	3.1%	3.5%
Population*	2,383,286	180,216	883,053	10,098,052	3,164,182	2,135,413	3,302,833	281,455	443,738	848,112	39,148,760	330,129,039	7,673,076,000
% of Population	6.09%	0.46%	2.26%	25.79%	8.08%	5.45%	8.44%	0.72%	1.13%	2.17%	0.20%	0.0718%	

Sources: CDPH, WHO, CDC

The date for which case statistics and hospital data were reported. Hospital COVID data are self-reported through a portal managed by the California Hospital Association and pulled at 2pm. COVID case statistics are reported by local health departments to CalREDIE and are pulled at 2pm. Hospital data and case statistics are integrated by the California Department of Technology and made available through the Open Data Portal the following morning. CA Open Data Portal is at least 24 Hours behind although a backlog of new case reports at the State level has ostensibly been cleared, some County dashboards still contain notes that indicate data are missing. *California-Demographics.com made by Cubit - a demographic data provider & census.gov

Presumptive active cases - A calculation (Total Cases - Recovered - Dead) (LA County does not report recovery rates and Imperial County case data reporting is delayed to the state data source)

News

More detail on page 3

US Data

More detail on page 5

State Data

More detail on page 8

Riverside County Data

More detail on page 19

Weather

More detail on page 10

Wildfire

More detail on page 19

News

COVID-19 is 3rd leading cause of death for Black Americans, report says

- A new report through the Brookings Institute found that COVID-19 is the third leading cause of death for Black Americans.
- The Brookings report looks deeper at disparities. It says the mortality rate for Black Americans is more than twice that for Asian or white Americans.
- Coronavirus is topped by only heart disease and cancer.
- According to the Wall Street Journal, Hispanics in their mid-40s and mid-70s make up 25% of those killed by the virus.
<https://www.kjrh.com/news/national/coronavirus/covid-19-is-3rd-leading-cause-of-death-for-black-americans-report-says>
REPORT - <https://www.brookings.edu/research/racial-economic-inequality-amid-the-covid-19-crisis/>

New guidance: Teachers could stay in classroom if exposed to COVID-19

- New guidance from President's administration that declares teachers to be "critical infrastructure workers" could give the green light to exempting teachers from quarantine requirements after being exposed to COVID-19 and instead send them back into the classroom.
- Keeping teachers without symptoms in the classroom, as a handful of school districts in Tennessee and Georgia have already said they may do, raises the risk that they will spread the respiratory illness to students and fellow employees. Multiple teachers can be required by public health agencies to quarantine for 14 days during an outbreak, which can stretch a district's ability to keep providing in-person instruction.
- South Carolina health officials also describe teachers as critical infrastructure workers, although it's unclear if any district there is asking teachers to return before 14 days.
- Among the first districts to name teachers as critical infrastructure workers was eastern Tennessee's Greene County, where the school board gave the designation to teachers July 13.
- "It essentially means if we are exposed and we know we might potentially be positive, we still have to come to school and we might at that point be carriers and spreaders," said Hillary Buckner, who teaches Spanish at Chuckey-Doak High School in Afton.
- At least five other school districts in Tennessee have given the designation to their teachers, seeking to exempt them from quarantine orders. Gov. Bill Lee on Tuesday blessed the move, with his administration saying it would accept the designation, citing the Department of Homeland Security's Cybersecurity & Infrastructure Security Agency.
- That agency on Tuesday issued its fourth version of who counts as a critical infrastructure worker, for the first time saying teachers should be on the list alongside nurses, police officers and meat packers. Such workers can be permitted to keep working following COVID-19 exposure "provided they remain asymptomatic and additional precautions are implemented to protect them and the community," the Centers for Disease Control and Prevention states.
- A spokesperson for Georgia Gov. Brian Kemp said his administration is evaluating whether it wants to incorporate the federal guidance into Georgia's legal framework, which could spur more districts to act.
- "We have had some superintendents reach out to ask where the administration is on this topic," said Candice Broce, a spokesperson for the Republican Kemp. "We're in the soliciting-input mode."

- A lawyer for Kemp wrote an email Wednesday telling Georgia's Floyd County district that teachers remain subject to quarantine orders until Kemp or health officials decide whether to incorporate the federal guidance. Floyd County said Thursday it would reverse its designation of teachers as critical infrastructure workers.

<https://www.live5news.com/2020/08/20/new-guidance-teachers-could-stay-classroom-if-exposed-covid/>

CDC - https://www.cdc.gov/coronavirus/2019-ncov/community/critical-workers/implementing-safety-practices.html?utm_source=newsletter&utm_medium=email&utm_campaign=newsletter_axiosam&stream=top

Identifying Critical Infrastructure During COVID-19 <https://www.cisa.gov/identifying-critical-infrastructure-during-covid-19>

Advisory Memorandum: https://www.cisa.gov/sites/default/files/publications/Version_4.0_CISA_Guidance_on_Essential_Critical_Infrastructure_Workers_FINAL%20AUG%2018v2_0.pdf

NYC teachers union threatens strike without universal testing for kids, teachers before school reopening

- Mayor de Blasio and the city's powerful teacher union are squaring up — a fight card that could determine when and how public schools reopen.
- The United Federation of Teachers upped the reopening ante on Wednesday, threatening to strike if city officials don't tick off a list of safety checks that includes testing every teacher and student before schools open.
- "This city went through hell and back, and we are not going to hell again because of short-sighted political agendas," said UFT President Michael Mulgrew, who was joined by doctors and elected officials at a news conference.
- The union is also demanding verification that every school has adequate ventilation and personal protective equipment.
- Mulgrew said if any of the conditions aren't met at a school, it shouldn't open Sept. 10 — the likely start date for in-person classes — and conceded it'd likely delay reopening until late September or October, an idea the city principals union [floated](#) last week.
- City officials have promised that at reopening, every school will have adequate protective gear and be stocked for at least 30 days, and that rooms or buildings without effective ventilation won't be used.
- The city plan also recommends coronavirus testing for every teacher before school starts, but doesn't require it — and doesn't lay out any testing guidelines for students
- Union officials now counter that kids and staff shouldn't get through the front door without proof they're virus-free.
- Mulgrew suggested each student and staffer first get a COVID-19 antibody test, which, if positive, would serve as permission to attend in-person school for two months. If it's negative, each adult and child should get a COVID-19 virus test within 10 days of the start of school, union officials say.
- Even after an initial round of testing, union officials say a random sampling of staff and students from each school should be tested monthly to stay ahead of COVID-19 clusters.
- It would be a massive undertaking to test more than one million public school students and more than 100,000 Education Department staffers; New York City tests an approximate average of 21,000 people a day.

<https://www.nydailynews.com/new-york/education/ny-uft-nyc-school-reopening-plan-20200819-kyvexzckb25gnlm4y5pbs5qcgcy-story.html>

Chicago Teachers Threatened a Strike. Hours Later, Chicago Schools Went Remote.

- The Chicago Teachers Union threatened a strike in response to Mayor Lori Lightfoot's refusal to move city schools to remote learning for the fall. Hours later, the mayor caved. Strikes work — and during a pandemic, they can save lives.
- On Tuesday afternoon, the Chicago Sun-Times reported that the Chicago Teachers Union (CTU) planned to call a strike authorization vote to keep students from returning to schools in the middle of the COVID-19 pandemic. A few hours later, the city

government canceled a plan to bring students back to schools two days a week and announced that fall classes would instead be held entirely remotely.

- Mayor Lori Lightfoot, claiming the decision was about science rather than teachers threatening militant workplace action. But she previously supported a plan that claimed it was safe to bring students back to school buildings two days a week.
- Demands for remote learning have grown more intense over the summer, as teachers say that school districts are woefully unprepared to prevent the rapid spread of COVID-19 to students and school staff.
- The stakes couldn't be higher. New York City has been an epicenter of COVID-19, and the student population is immense. There are roughly 1.1 million New York City public school students, one in every three hundred people in the United States

<https://www.jacobinmag.com/2020/08/chicago-teachers-strike-covid-19>

Notre Dame cancels classes for 2 weeks after COVID-19 spike

- Notre Dame University on Tuesday canceled in-person undergraduate classes for two weeks after a spike of [coronavirus](#) cases that occurred since the semester began Aug. 10.
- University president the Rev. John Jenkins said there have been 147 confirmed cases of coronavirus on campus since the start of classes for the university's approximately 12,000 students.

<https://abcnews.go.com/Health/wireStory/notre-dame-cancels-classes-weeks-covid-19-spike-72451121>

MSJC semester begins online for more than 15,600 student

- Mt. San Jacinto College began its Fall 2020 semester on Monday, with thousands of students enrolled in online classes amid the ongoing COVID-19 pandemic.
- About 98 percent of MSJC's courses are online this fall to help further reduce the spread of COVID-19. Hands-on courses – Career Education classes in automotive, nursing and diagnostic medical sonography (DMS), for example – will be held on MSJC campuses when necessary.
- “We wish we could welcome all of our students back to our campuses right now,” said Dr. Roger Schultz, MSJC Superintendent/President. “We ordered our campuses closed on March 13 because of COVID-19, and for the health and safety of our students, faculty and staff, we'll remain mostly closed for the foreseeable future. Hopefully, we can welcome back our students in person soon.”
- Among the new offerings to students this fall is the MSJC Apprenticeship program, which is focusing on automotive this semester.
- Companies with auto maintenance and repair facilities are helping students who are looking for a career while wishing to learn necessary skills through a combination of structured on-the-job training and related classroom instruction at MSJC.

<http://www.menifee247.com/2020/08/msjc-semester-begins-online-for-more-than-15600-students.html>

One Good Thing

- Stories about the kindness of strangers and individuals who sacrifice for others.

<https://apnews.com/OneGoodThing> & <https://www.goodnewsnetwork.org/>

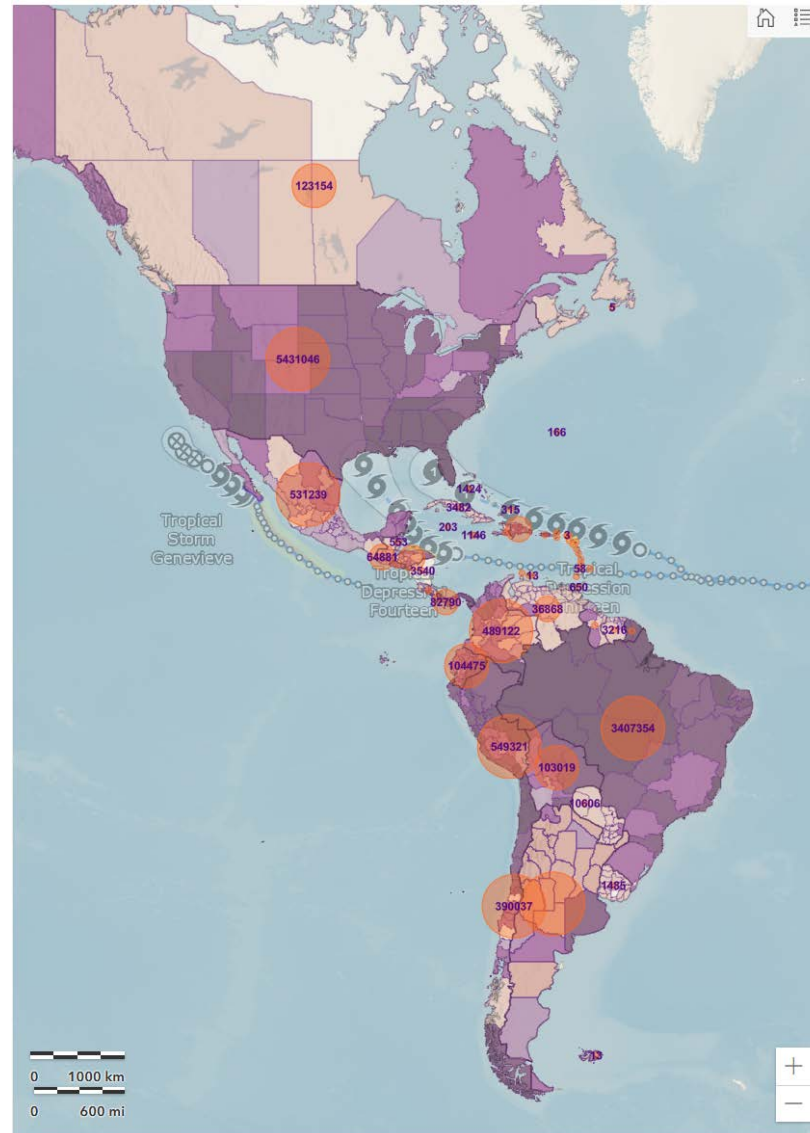
U.S. Data



COVID-19 Americas' Regional Dashboard. Geographic Distribution of Cases and Deaths

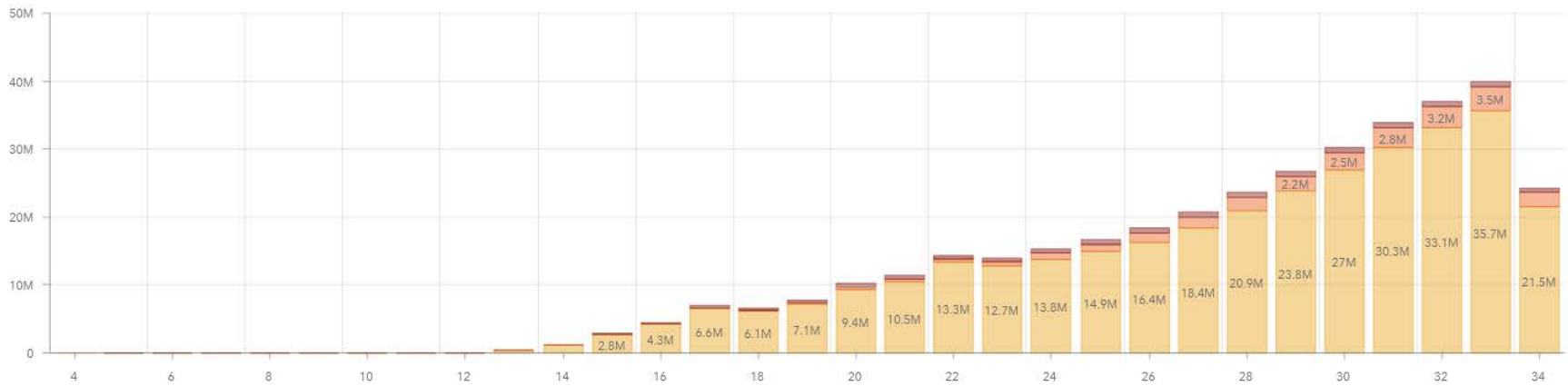
<https://paho-covid19-response-who.hub.arcgis.com/>

Cumulative cases		Cumulative deaths	
11,888,404		426,503	
Select countries or territories			
UNITED STATES OF AMERICA	Cumulative cases: 5,431,046	Cumulative deaths: 170,640	
BRAZIL	Cumulative cases: 3,407,354	Cumulative deaths: 109,888	
PERU	Cumulative cases: 549,321	Cumulative deaths: 26,658	
MEXICO	Cumulative cases: 531,239	Cumulative deaths: 57,774	
COLOMBIA	Cumulative cases: 489,122	Cumulative deaths: 15,619	
CHILE	Cumulative cases: 390,037	Cumulative deaths: 10,578	
ARGENTINA	Cumulative cases: 305,975	Cumulative deaths: 6,114	
CANADA	Cumulative cases: 123,154	Cumulative deaths: 9,045	
ECUADOR	Cumulative cases: 104,475	Cumulative deaths: 6,146	
BOLIVIA (PLURINATIONAL STATE OF)	Cumulative cases: 103,019	Cumulative deaths: 4,172	
DOMINICAN REPUBLIC	Cumulative cases: 88,127	Cumulative deaths: 1,501	
PANAMA	Cumulative cases: 82,790	Cumulative deaths: 1,809	
GUATEMALA	Cumulative cases: 64,881	Cumulative deaths: 2,467	



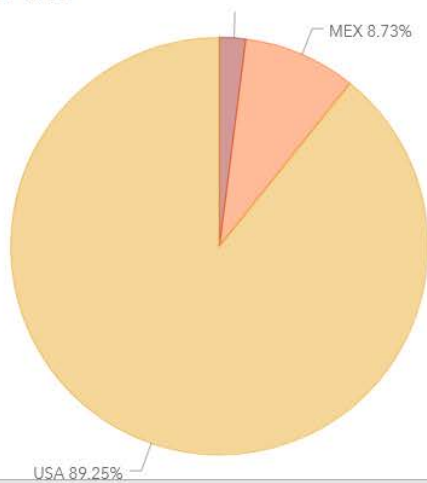
Countries 3	Cumulative cases 6.1M	Cumulative deaths 237.5k	Cumulative recovered 2.4M
-----------------------	---------------------------------	------------------------------------	-------------------------------------

Cumulative Cases by EW

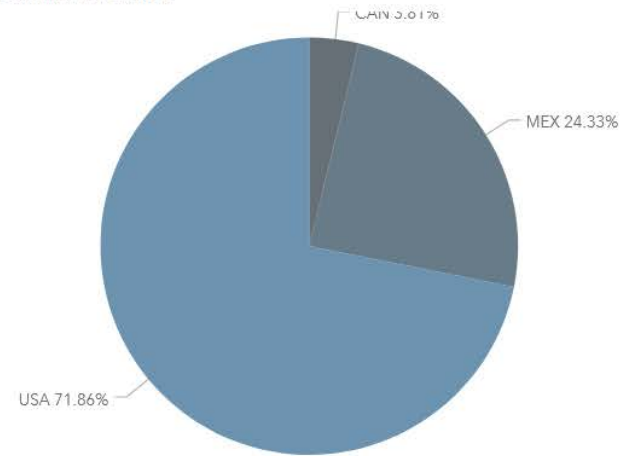


Cumulative Incidence Rate | Cumulative cases by EW

Percentual distribution of cases



Percentual distribution of deaths



Covid-19 Case Cluster (past 48 hours)

<https://www.cdc.gov/covid-data-tracker/index.html#social-impact>

Social Impact COVID-19 Events in the United States

11 EVENTS
Past 48 hours

Map of news reports related to social impact events resulting from the COVID-19 outbreak in the United States, such as school closures, localized outbreaks, state of emergency declarations, etc.

DATE RANGE

Past 48 hours

TYPE OF EVENT ?

COVID-19 Case Clusters

About this Map | Developed by HealthMap



Articles:

[Florida State and coronavirus: 42 students, 5 employees tested positive this month](#)

[University suspends football practice due to cluster of COVID-19 cases](#)

[COVID-19 cases reported in Millard, Gretna, Ralston school districts](#)

[Confirmed COVID-19 cases reported at USP Thomson](#)

[More than 2 dozen COVID-19 cases traced to Millinocket wedding reception](#)

[University of Tennessee says it tracked COVID-19 cluster to student party](#)

[Confirmed COVID-19 cluster tied to App State football team, practice suspended](#)

[University of North Carolina has four Covid-19 clusters less than a week after starting classes](#)

State Data

<https://covid19.ca.gov/>
<https://update.covid19.ca.gov/#top>
<https://www.cdph.ca.gov/Programs/CID/DCDC/Pages/Immunization/ncov2019.aspx#>

Statewide industry guidance to reduce risk

<https://covid19.ca.gov/industry-guidance/#top>
<https://www.cdph.ca.gov/Programs/CID/DCDC/Pages/Guidance.aspx>

Open sectors in counties with variance

<https://covid19.ca.gov/roadmap-counties/#track-data>
<https://covid19.ca.gov/roadmap-counties/>

Data models

<https://covid19.ca.gov/data-and-tools/>

CDPH News Releases 2020

<https://www.cdph.ca.gov/Programs/OPA/Pages/New-Release-2020.aspx>

California COVID-19 By The Numbers

August 19, 2020
Numbers as of August 18, 2020

CALIFORNIA COVID-19 SPREAD

638,831 (+6,164) CASES

Ages of Confirmed Cases

- 0-17: 63,118
- 18-49: 384,524
- 50-64: 121,521
- 65+: 68,806
- Unknown/Missing: 862

Gender of Confirmed Cases

- Female: 321,189
- Male: 310,752
- Unknown/Missing: 6,890

11,523 (+181) Fatalities

Hospitalizations

Confirmed COVID-19
5,058/1,590
Hospitalized/in ICU

Suspected COVID-19

1,421/171
Hospitalized/in ICU

For county-level hospital data:

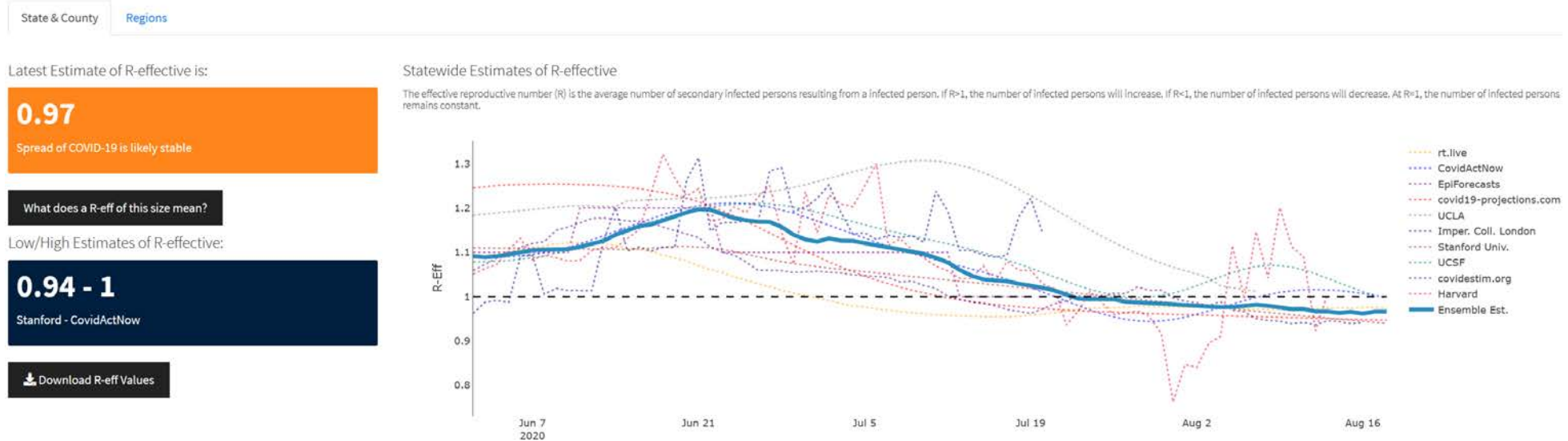
bit.ly/hospitalsca

Your actions **save lives.**

For county-level data:
data.chhs.ca.gov
covid19.ca.gov

Current R-effective in California

The effective reproduction number (R-effective) is the average number of people each infected person will pass the virus onto and represents the rate at which COVID-19 is spreading.



Riverside County Data

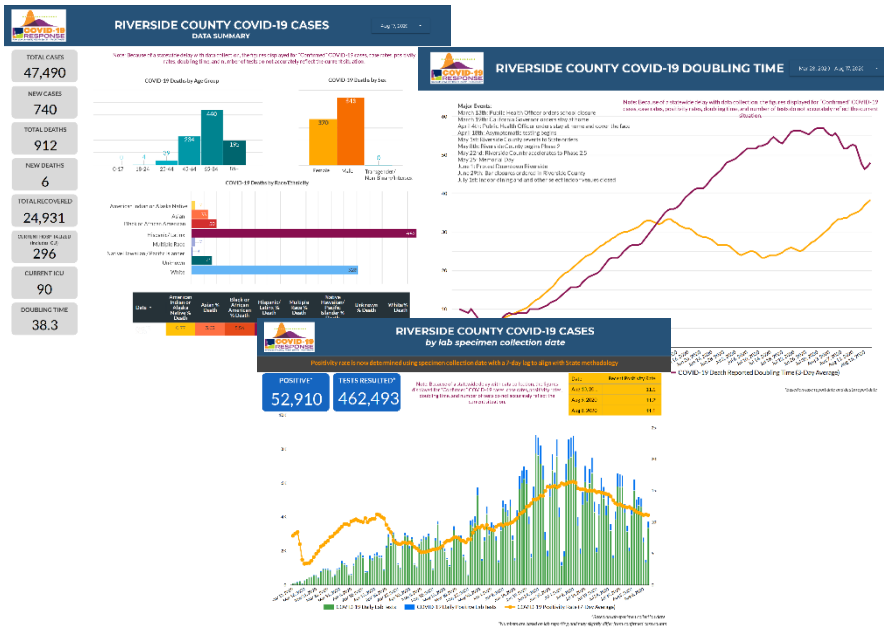
<https://www.rivcoph.org/coronavirus>

RUHS Public Health News:

- [Riverside County recognizes 30-year anniversary Ryan White funding for HIV/AIDS program](#) - August 18, 2020
- [ADVISORY FOR THE OPERATION OF SCHOOLS](#) - August 14, 2020
- Public health officer issues statement on school waiver process [English](#) / [Spanish](#) / [School Waivers Info](#) - August 5, 2020
- Youth sports may resume with social distancing [English](#) / [Spanish](#) - August 5, 2020
- State Governor Orders - [Guidance for the use of Face Coverings](#) - August 05, 2020
- [Updated Advisory for the Operation of Youth Sports](#) - August 5, 2020
- Board of Supervisors vote 5-0 to declare racism as a public health crisis [English](#) / [Spanish](#) - Aug 4, 2020
- [\\$2 Million Approved to Launch Youth Community Corps](#) - August 4, 2020

Daily Epidemiology Summary updated 8-19-2020

https://rivcoph.org/Portals/0/Documents/CoronaVirus/August/Dashboard/3/Public%20Daily_COVID-19_Updates%20-%202020-08-19.pdf?ver=2020-08-19-150405-320×tamp=1597874703018



Riverside County To Target Mosquitoes In 173-Acre Spraying Area

- Due to recent positive West Nile virus mosquito test sample results and a high mosquito population, the Riverside County Vector Control Program has scheduled an ultra-low volume ground application using truck-mounted sprayers to reduce the number of adult mosquitoes.
- The application of EPA approved mosquito control product Zenivex (EPA Reg No 2724-807) is scheduled for Thursday, Aug. 20 from 5 a.m. until 7 a.m.



https://patch.com/california/lakeelsinore-wildomar/riverside-county-target-mosquitoes-173-acre-spraying-area?utm_term=article-slot-1&utm_source=newsletter-daily&utm_medium=email&utm_campaign=newslett


Weather

COVID-19 Weather Support

Issued:

1100 AM August 20, 2020

NATIONAL WEATHER SERVICE
SAN DIEGO, CA



IMPACT SCALE

●
None

●
Minor

●
Moderate

●
High

●
Extreme

Resources

- <https://www.weather.gov/spot/>
- <https://inws.ncep.noaa.gov>
- <https://www.wrh.noaa.gov/sgx/event/dsstable.php>

(858) 675 - 8705
(24/7, Restricted)

Weather.gov/SanDiego

7-day Forecast for Counties in far Southwest CA

Period Aug 20 - Aug 27 (24-hr)	Orange	SW San Bernardino	All Deserts	Western Riverside	San Diego
Today	Hot Inland	Very Hot	Very Hot	Very Hot	Hot Inland
Friday	Very Warm Inland	Hot	Hot	Hot	Very Warm Inland
Saturday	Warm Inland	Very Warm	Hot	Very Warm	Warm Inland
Sunday	Warm Inland	Warm	Very Warm	Warm	Warm Inland
Monday	Warm Inland	Warm	Very Warm	Warm	Warm Inland
Tuesday	Warm Inland	Very Warm	Hot	Very Warm	Warm Inland
Wednesday	Very Warm Inland	Very Warm	Hot	Very Warm	Very Warm Inland
Thursday	Very Warm Inland	Hot	Hot	Hot	Very Warm Inland

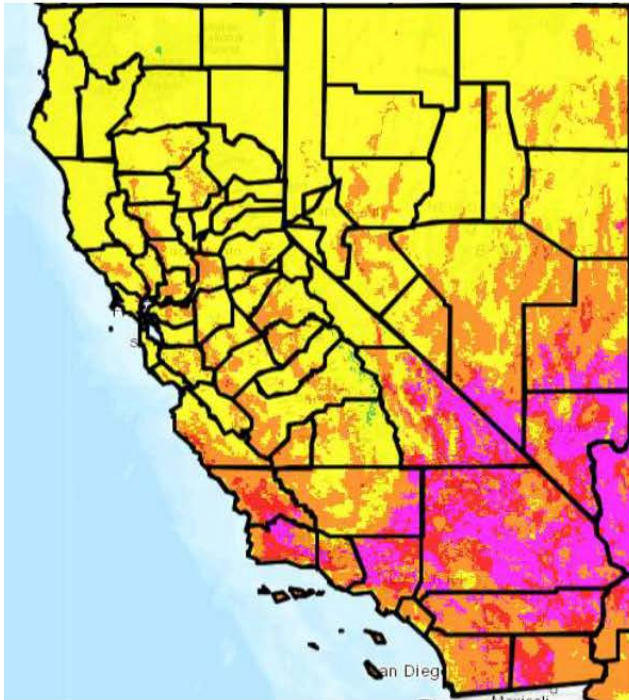
Forecast Discussion

Extreme heat will persist through Friday throughout the region. Slight cooling will occur over the weekend and extend through Monday, but temperatures will remain largely above average. Early next week temperatures will start to rise back up. Thunderstorms are possible over the mountains each afternoon and have the potential to drift into the High Desert today. Hazards from thunderstorms include lightning, small hail, and strong erratic winds. Stronger storms may induce localized flash flooding.

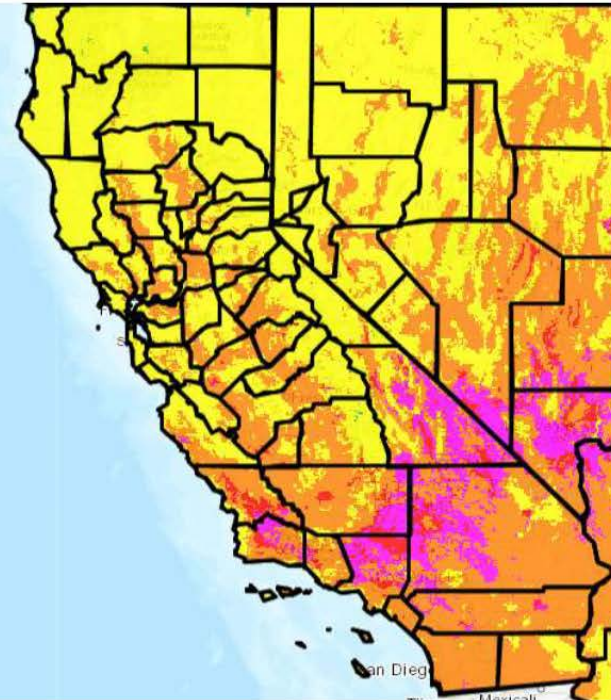
Latest hazard threat table: <https://www.wrh.noaa.gov/sgx/event/dsstable.php>

<https://www.weather.gov/forecastpoints#>

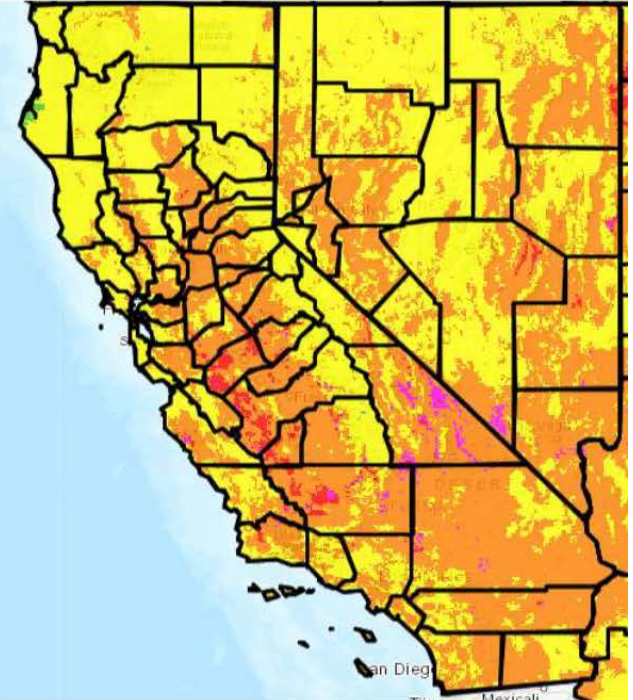
HEAT RISK FORECAST 08/20/20 - 08/22/20



Thursday



Friday



Saturday

Category	Level	Meaning
Green	0	No Elevated Risk
Yellow	1	Low Risk for those extremely sensitive to heat, especially those without effective cooling and/or adequate hydration
Orange	2	Moderate Risk for those who are sensitive to heat, especially those without effective cooling and/or adequate hydration
Red	3	High Risk for much of the population, especially those who are heat sensitive and those without effective cooling and/or adequate hydration
Magenta	4	Very High Risk for entire population due to long duration heat, with little to no relief overnight



PRECIPITATION FORECAST 08/20/20 - 08/22/20



Thursday

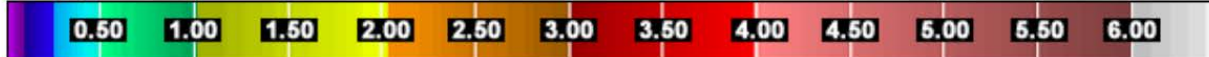


Friday



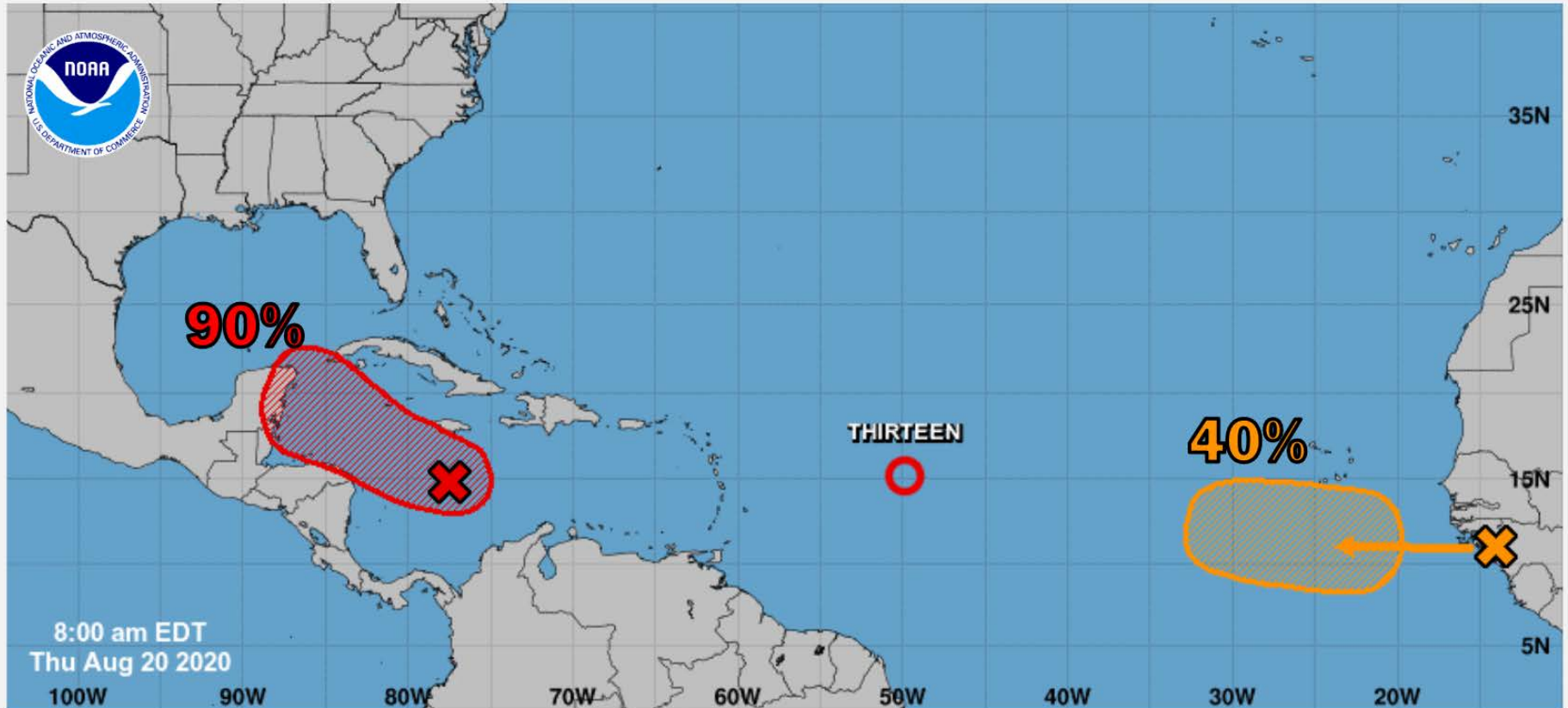
Saturday

Precipitation (inches)



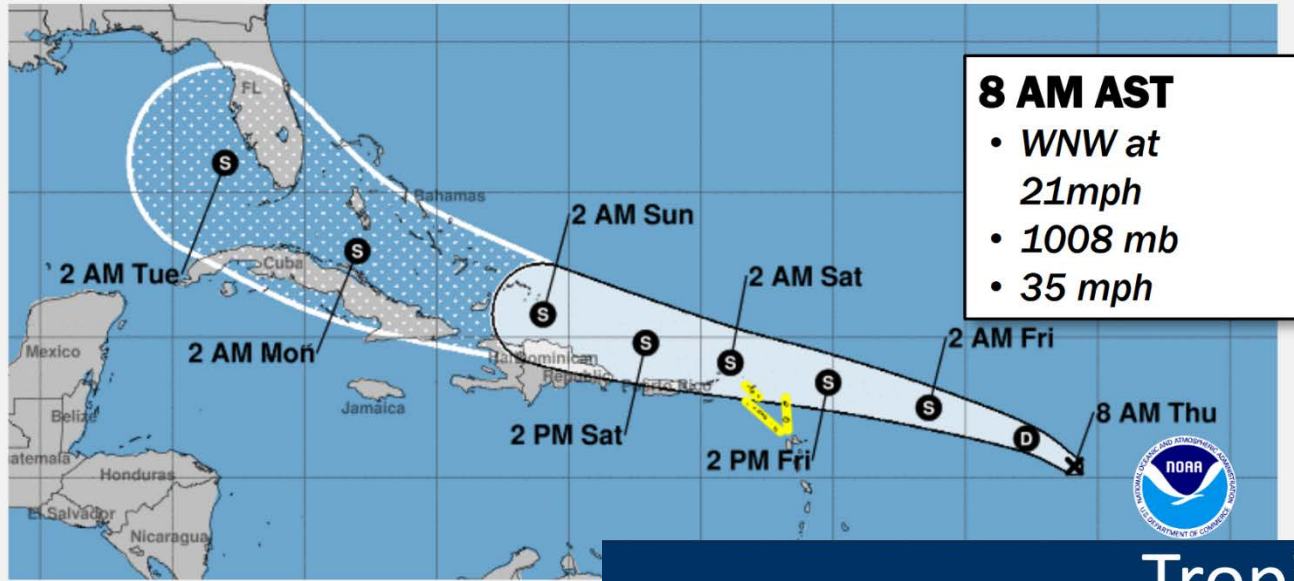
Atlantic Overview

TROPICAL OUTLOOK



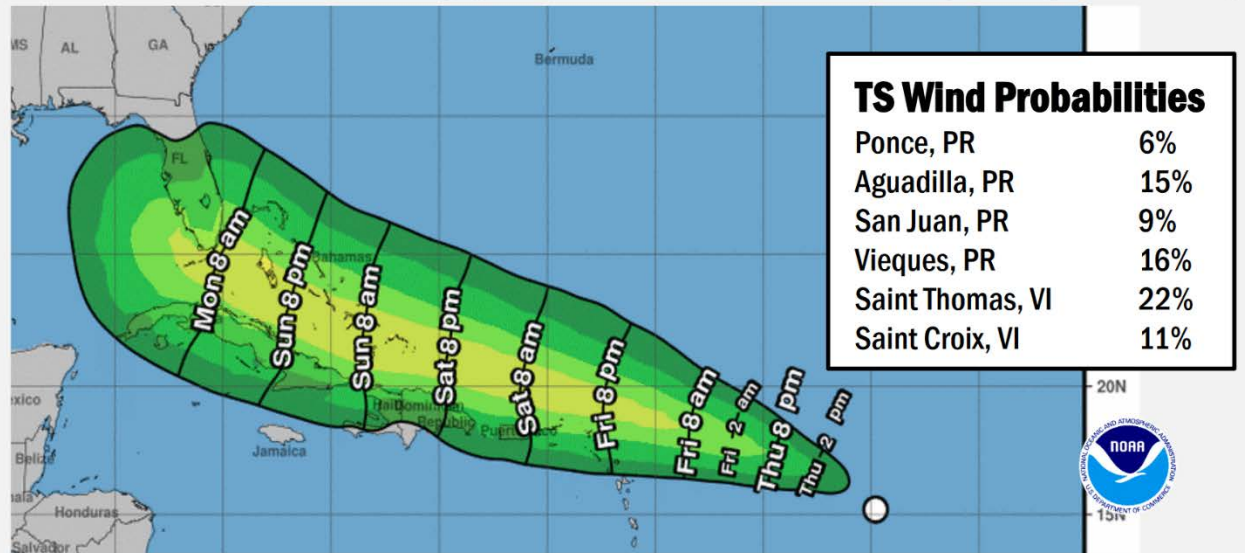
Tropical Depression 13

FORECAST TRACK



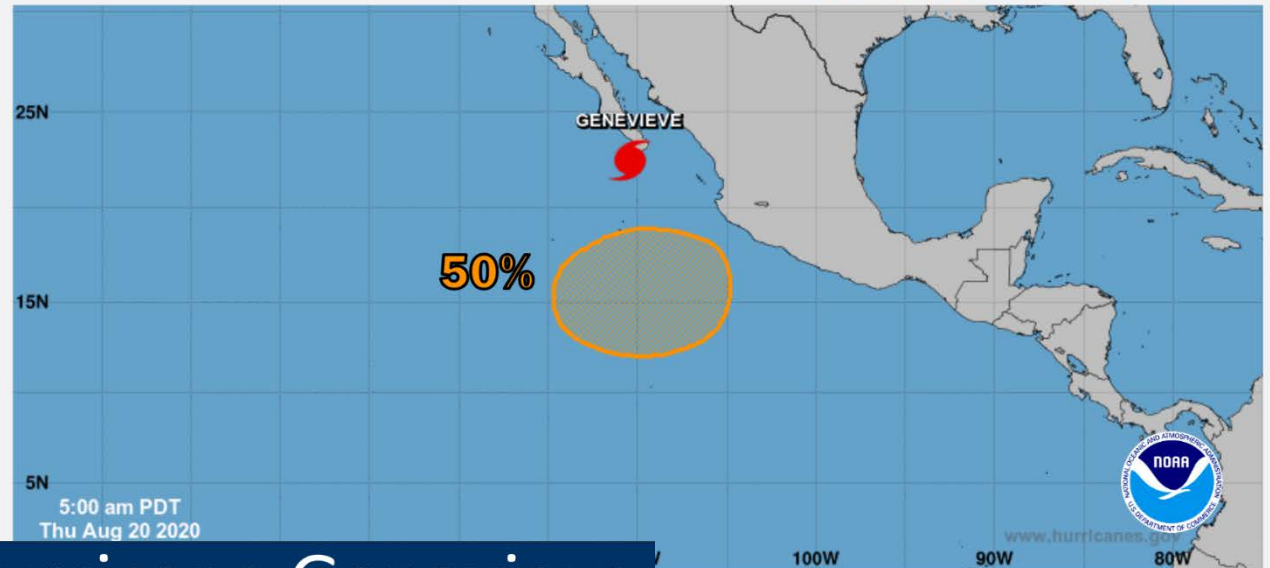
Tropical Depression 13

MOST LIKELY ARRIVAL OF TS WINDS



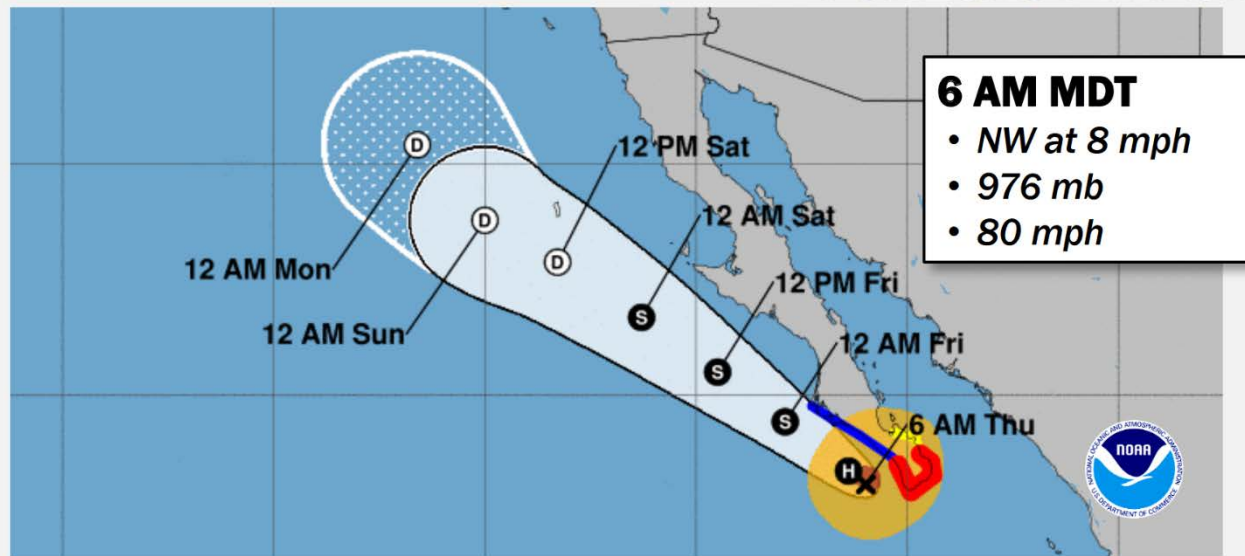
East Pacific Overview

TROPICAL OUTLOOK



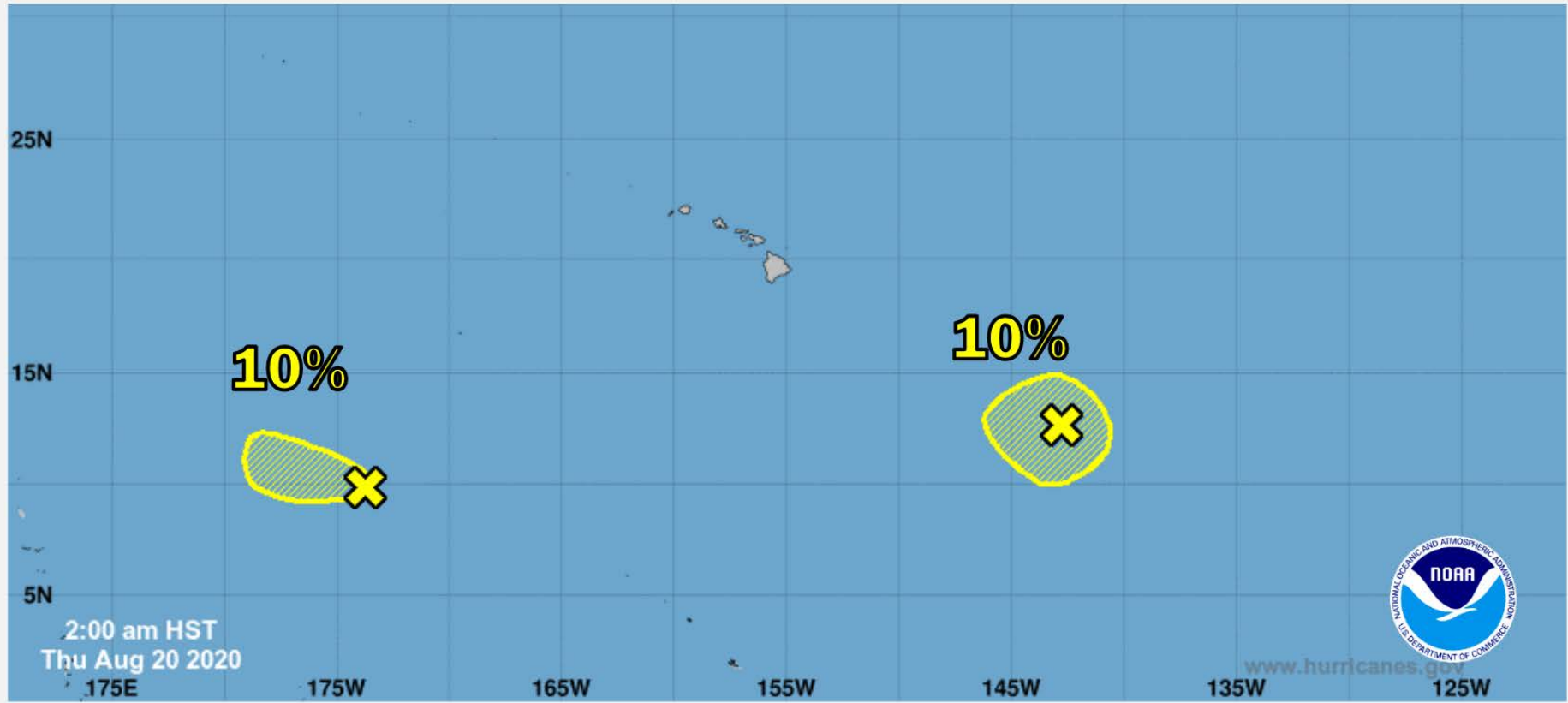
Hurricane Genevieve

FORECAST TRACK



Central Pacific Overview

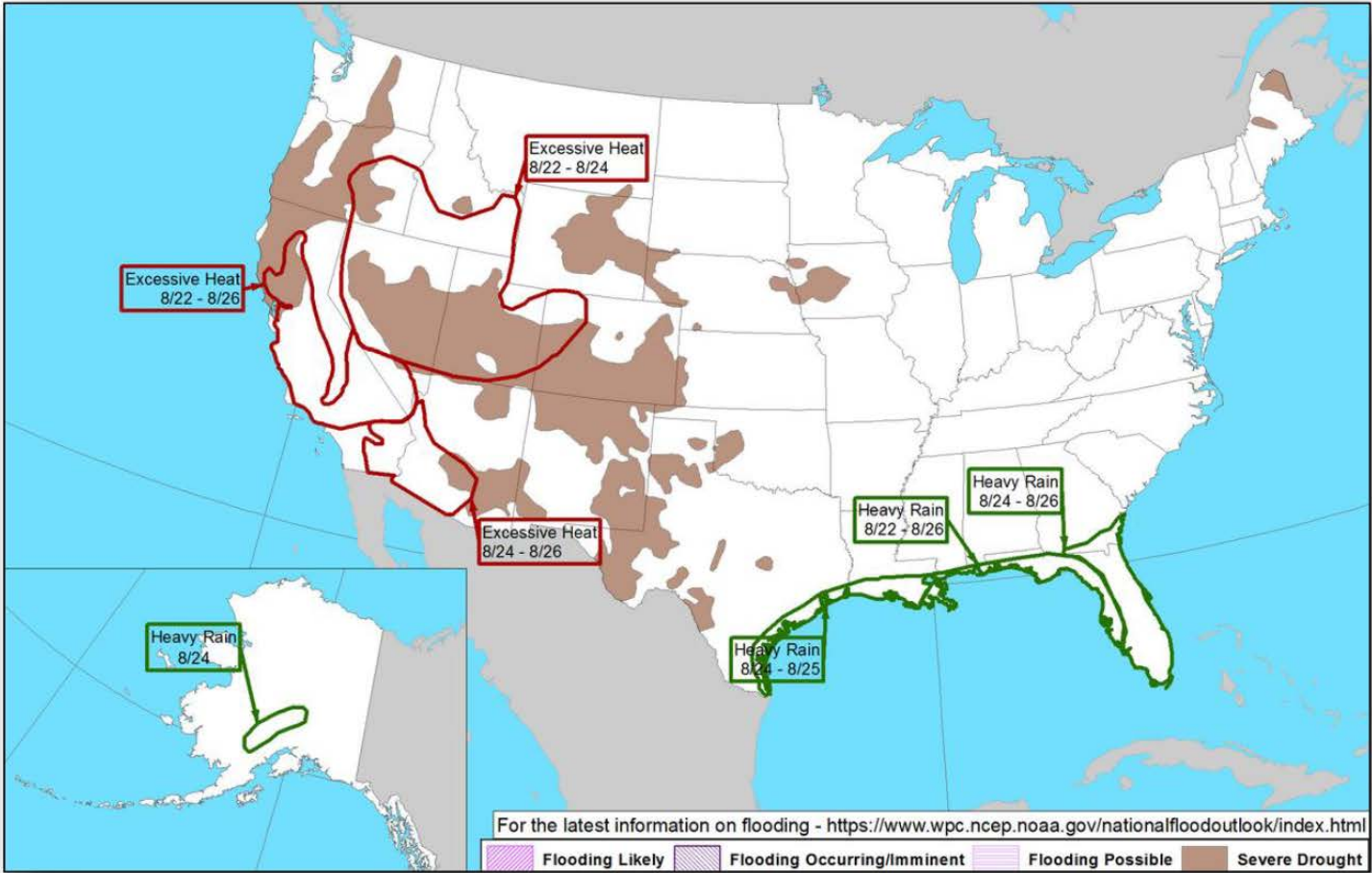
TROPICAL OUTLOOK



Hazards Outlook – Aug 22-26



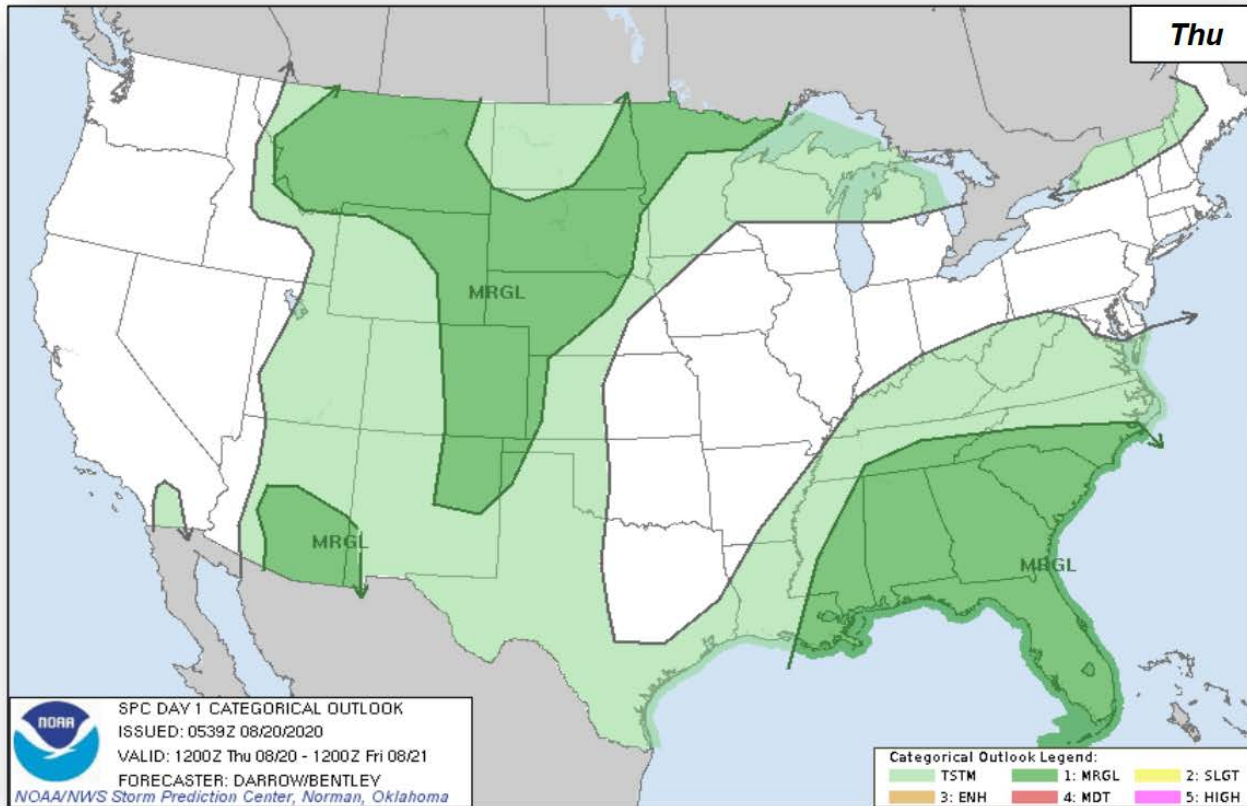
FEMA



Severe Weather Outlook



FEMA



Wildfire

National Fire Activity



National Preparedness Level: 5 (+1)

Initial Attack Activity:	Heavy (332 new fires)
New large fires:	34
Large fires contained:	9
Uncontained large fires:	75
NIMOs committed:	1
Type 1 IMTs committed:	10
Type 2 IMTs committed:	8

Preparedness Level 5: When several geographic areas are experiencing major incidents that have the potential to exhaust all agency fire resources.



<https://fsapps.nwcg.gov/>

Wildfire Summary



FEMA

Fire Name (County, ST)	FMAG #	Acres Burned	Percent Contained	Evacuations	Structures (Homes / Other)			Fatalities / Injuries
					Threatened	Damaged	Destroyed	
North Brownstone Fire (Yakima County, WA) FINAL	5330-FM-WA	5,981	90% (+50)	M: 0	H: 0	H: 0	H: 0	0 / 0
				V: 0	O: 0	O: 0	O: 0	
Loyalton Fire (Washoe County, NV; Sierra, Plumas & Lassen counties, CA)	5328-FM-NV	46,386 (+2,239)	35% (+5%)	M: 50 (-200)	H: 200	H: 0	H: 5	0 / 2
				V: 0	O: 0	O: 0	O: 6	
River Fire (Monterey County, CA)	5329-FM-CA	15,050 (+10,541)	7% (-3)	M: 9,075 (+4,036)	H: 2,750 (+1,223)	H: 2	H: 5	0 / 0
				V: 0	O: 0	O: 0	O: 1	
LNU Lightning Complex (Napa County, CA)	5331-FM-CA	124,100 (+120,789)	0%	M: 66,600 (+61,300)	H: 25,000 (+24,800)	H: 50 (+50)	H: 100 (+100)	0 / 0
				V: 0	O: 10	O: 20 (+20)	O: 5 (+5)	
Jones Fire (Nevada County, CA)	5332-FM-CA	705 (+30)	5%	M: 4,100 (+209)	H: 0	H: 0	H: 5	0 / 0
				V: 0	O: 0	O: 1	O: 0	
Carmel Fire (Monterey County, CA)	XXXX-FM-CA	2,150 (+950)	0%	M: 1,026	H: 311 (+131)	H: 0	H: 3	0 / 0
				V: 680	O: 0	O: 0	O: 0	
Grizzly Creek Fire (Garfield & Eagle County, CO)	5334-FM-CO	28,030	4%	M: 231	H: 4,258	H: 0	H: 0	0 / 2
				V: 0	O: 1,053	O: 0	O: 3	
Pine Gulch Fire (Garfield & Mesa County, CO)	5335-FM-CO	125,252	14%	M: 37	H: 50	H: 0	H: 0	0 / 0
				V: 0	O: 5	O: 0	O: 1	

Pine Gulch Fire – CO



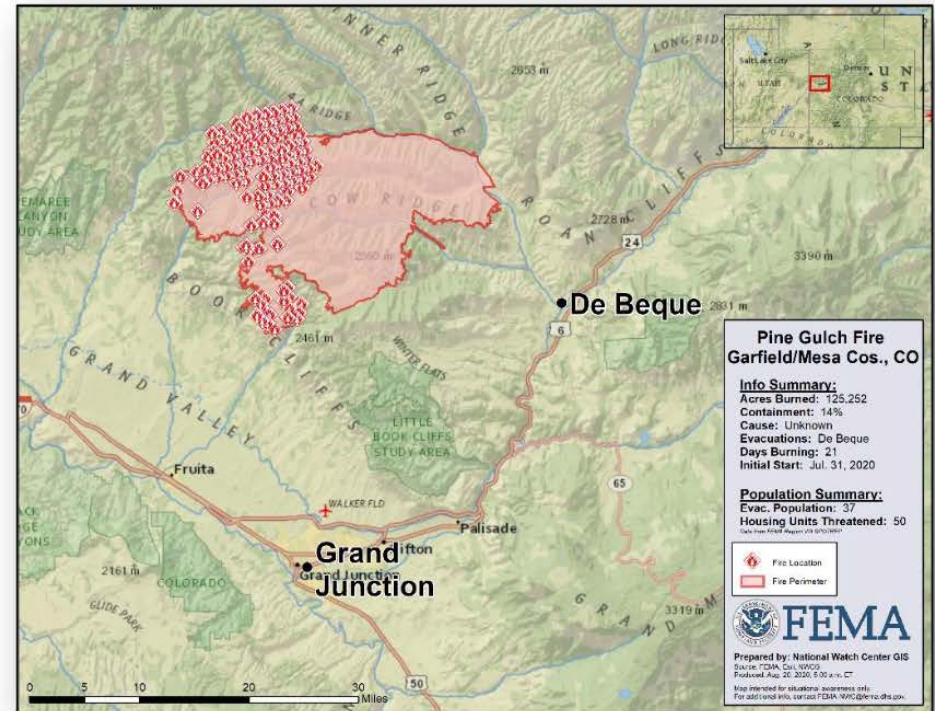
Fire Name (County, ST)	FMAG #	Acres Burned	Percent Contained	Evacuations	Structures (Homes / Other)			Fatalities / Injuries
					Threatened	Damaged	Destroyed	
Pine Gulch Fire (Garfield & Mesa County, CO)	5335-FM-CO	125,252	14%	M: 37 V: 0	H: 50 O: 5	H: 0 O: 0	H: 0 O: 1	0 / 0

Current Situation:

- The fire began on Jul 31 and has burned in excess of 125,100 acres in Garfield and Mesa counties, CO; currently 14% contained
- Threatening 50 homes in and around De Beque, CO (population 504) as well as infrastructure, utilities, and equipment in the area
- Mandatory evacuations are taking place for 37 people

Response:

- CO EOC at Partial Activation (COVID-19)
- FEMA Region VIII RWC continues to monitor
- FEMA NWC continues to monitor
- FMAG was approved on Aug 19



Grizzly Creek Fire— CO



FEMA

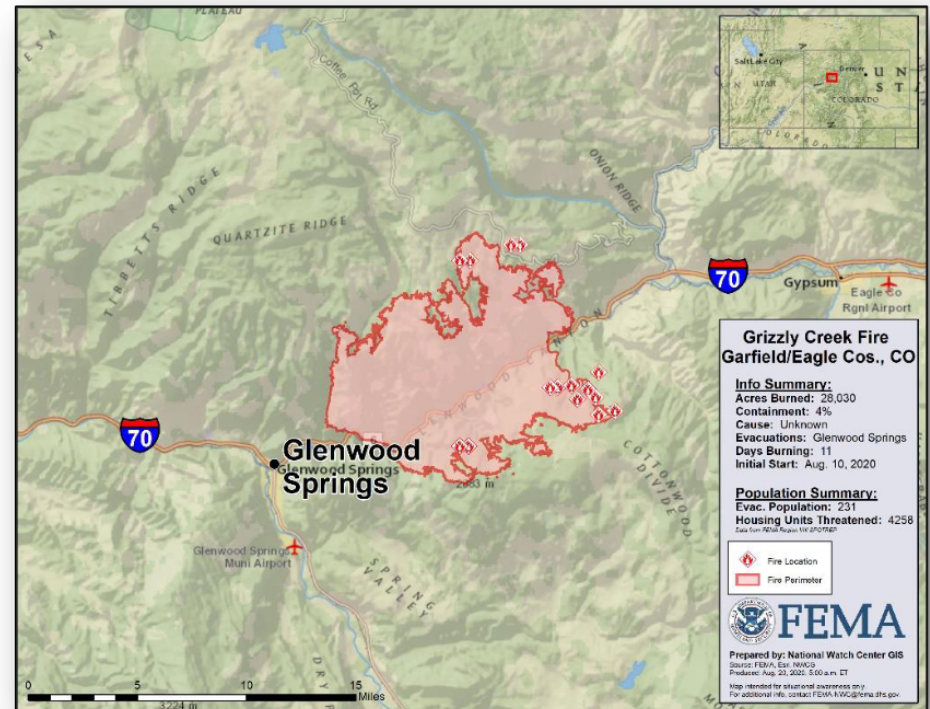
Fire Name (County, ST)	FMAG #	Acres Burned	Percent Contained	Evacuations	Structures (Homes / Other)			Fatalities / Injuries
					Threatened	Damaged	Destroyed	
Grizzly Creek Fire (Garfield & Eagle County, CO)	5334-FM-CO	28,030	4%	M: 231 V: 0	H: 4,258 O: 1,053	H: 0 O: 0	H: 0 O: 3	0 / 2

Current Situation:

- The fire began on Aug 10 and is burning on Federal and State land in Garfield and Eagle County, CO (population 18,197)
- 28,030 acres burned; 4% contained
- Threatening 4,258 homes; 1,053 buildings, infrastructure, Glenwood watershed, and utilities in the area
- Mandatory evacuations are in effect for 231 homes
- I-70, a major thoroughfare through the Colorado Rockies and four other secondary routes are closed

Response:

- CO EOC at Partial Activation (COVID-19)
- FEMA Region VIII RWC continues to monitor
- FEMA NWC continues to monitor
- FMAG was approved on Aug 19



LNU Lightning Complex Fire– CA (Update)



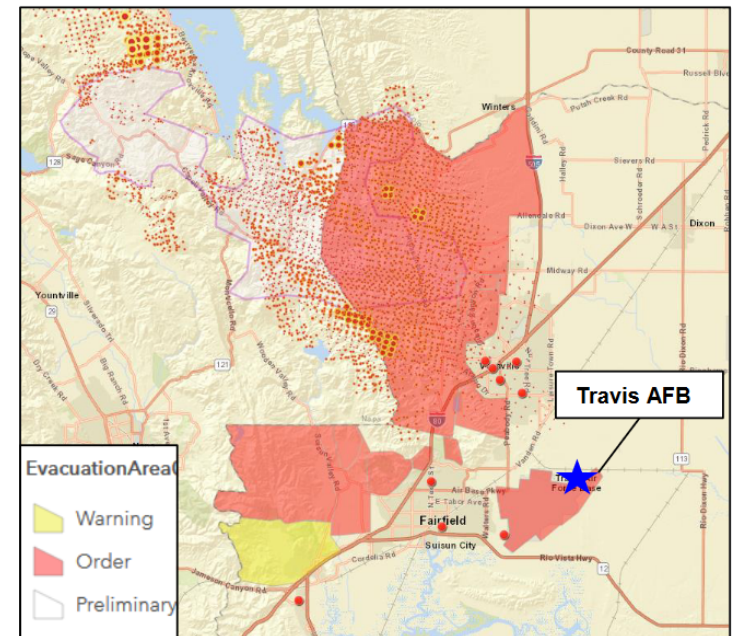
Fire Name (County, ST)	FMAG #	Acres Burned	Percent Contained	Evacuations	Structures (Homes / Other)			Fatalities / Injuries
					Threatened	Damaged	Destroyed	
LNU Lightning Complex (Napa County, CA)	5331-FM-CA	124,100 (+120,789)	0%	M: 66,600 (+61,300) V: 0	H: 25,000 (+24,800) O: 10	H: 50 (+50) O: 20 (+20)	H: 100 (+100) O: 5 (+5)	0 / 0

Current Situation:

- Fires began August 17 and is burning on state and private land
- Fire is threatening homes in the Napa, Lake, Solano, Sonoma, and Yolo counties, CA
- Estimated 500,000 people are threatened by this event
- 32 other large fires are burning uncontrolled within the State
- Travis Air Force Base installation commander has issued a mandatory evacuation
- C-17's from Travis are expected to evacuate to Joint Base Lewis-McChord
- Interstate 80 was previously closed but has since reopened
- No critical infrastructure has been impacted

Response:

- FMAG approved August 18
- CA EOC at Full Activation (Civil Unrest and COVID-19)
- Region IX RWC and NWC continue to monitor



FIRE ACTIVITY

Cal OES INLAND REGION

Loyalton, Vegetation Fire, Lassen, Sierra & Plumas Counties

Location: Mount Ina Coolbrith, 5 miles E of Loyalton

Jurisdiction: Federal DPA, FRA/SRA, Tahoe N.F.

Per Cal OES Duty Officers and ICS-209 as of 08/20/20 at 0839 hours:

- 46,386 acres grass and brush, 38% contained
- No IR Flight
- Continued structure threat
- Threat to Hwy 395 and Hwy 70
- Threat to Critical Sage Grouse habitat and Goshawk Activity Center
- Threat to grazing allotments, wildlife habitat, and Babbitt Peak Research Area
- California Type 2, Team 10 in command

Deployments

- 1 Cal OES Fire and Rescue Branch Assistant Chief

Proclamations

- Sierra County submitted a Proclamation of a Local Emergency.

Jones, Vegetation Fire, Nevada County

Location: Jones Bar Rd, Yuba River Drainage, 5 miles northwest of Nevada City

Jurisdiction: State DPA, SRA, Nevada-Yuba-Placer Unit

Per Cal OES Duty Officers and ICS-209 as of 08/20/20 at 0839 hours:

- 705 acres bush and timber, 10% contained
- Fire is burning in steep terrain with difficult access
- Continued threat to structures
- Damage inspection is ongoing
- Threat to communities of Nevada City and Grass Valley
- Unified Command CAL FIRE and Nevada County Consolidated Fire Protection District

Activations

- Nevada County EOC is activated at Level 1 (highest)

Deployments

- 1 Cal OES Fire and Rescue Assistant Chief
- 1 Cal OES Inland Region Senior Emergency Services Coordinator (SESC)
- 1 Cal OES Inland Region Emergency Services Coordinator (ESC)
- 1 Cal OES Public Safety Communications Technicians



FIRE ACTIVITY

Cal OES INLAND REGION (Continued)

Jones, Vegetation Fire, Nevada County (Continued)

FMAG

- On 08/17/20 at 2339 hours an FMAG request has been received. Approved by FEMA , 08/18/20 at 0139 hours : FEMA-5332-FM-CA

Proclamations

- Nevada County submitted a Proclamation of a Local Emergency.

Mandatory Evacuations: 6,600 People

- Please see the attached [LEB 0700 Hrs Fire Status Report](#) for additional information.

Road Closures

- Please see the attached [LEB 0700 Hrs Fire Status Report](#) for additional information.

Evacuation Center

- Temporary Evacuation Point
 - Ready Springs School, 10862 Spenceville Rd., Penn Valley
 - Cottage Hill Elementary School, 22600 Kingston Lane, Grass Valley
 - Alder Creek Middle School, 10931 Alder Dr., Truckee

Shelters

- Red Cross is using hotel vouchers to assist evacuees for the Jones Fire, Nevada County.
 - Overnight Count: [82](#) individuals occupying [42](#) hotel rooms across [6](#) hotels.

Missions

- **2020-LAW-37699:** MIGU-4, 1 Cache APX, COMC Howell & CRU Andreozzi deploy to Nevada City SO on LEO Evacuation Mission.
UPDATE, 08/19/20, 1058 hours: [Demobed and back in quarters.](#) **MISSION CLOSED**

Hills, Vegetation Fire, Fresno County

Location: Hwy. 33 x Sutter Ave., 9 miles south of Coalinga

Jurisdiction: State DPA, SRA, Fresno Kings Unit

Per Cal OES Duty Officers and ICS-209 as of [08/20/20](#) at [0839](#) hours:

- 1,500 acres, grass and brush, 35% contained
- [Moderate uphill runs and wind driven runs](#)
- Threat to range lands
- Containment efforts are being hampered due to extreme temperatures



FIRE ACTIVITY

Cal OES INLAND REGION (Continued)

August Complex, Vegetation Fire, Tehama

Location: Grindstone Canyon, Elk Creek

Jurisdiction: Federal DPA, FRA, Mendocino N.F.

Per Cal OES Duty Officers and ICS-209 as of 08/19/20 at 1847 hours:

- 65,030 acres grass, brush and timber, 0% contained
 - The Rockwell, Pine Kop, Doe and Bowman Fires have either merged or are in the immediate area and total 30,000 acres, 0% contained
 - Box: 25 acres, 0% contained
- Fire burned rapidly overnight to the east
- Threat to the community of Elk Creek
- Evacuation Orders in place
- Threats to Campgrounds and old FS Station
- Threat to powerlines
- California Type 2, Team 15 assigned to August Complex, in brief today

Deployments

- 3 Cal OES Public Safety Communications Technicians

BTU/TGU Lightning Complex, Vegetation Fire

Location: Butte, Tehama, Glenn County

Per Cal OES Duty Officers and ICS-209 as of 08/20/20 at 0839 hours:

- 21,042 acres grass, brush and timber, 0% contained
 - Elkhorn 15,250 acres, 0% contained
 - Ivory, 4,000 acres, 0% contained
 - Potters (5-4), 1,012 acres, 50% contained
 - 2-24, 330 acres, 50% contained
 - 5-5, 200 acres, 0% contained
 - 1-8, 150 acres, 0% contained
 - 1-7, 100 acres, 5% contained
- Fires are in remote locations with difficult access
- Continued structure threat
- Threat to communities of Stirling City, Feather Falls and Forest Ranch
- Threat to high value timberland
- CAL FIRE IMT – 4 is in command



FIRE ACTIVITY

Cal OES INLAND REGION (Continued)

BTU/TGU Lightning Complex, Vegetation Fire (Continued)

Mandatory Evacuations

- Butte County
- Lassen County: 200 People
- Plumas County: 100 People
- Please see the attached LEB 0700 Hrs Fire Status Report for additional information.

Road Closures

- Please see the attached LEB 0700 Hrs Fire Status Report for additional information.

North Complex, Vegetation Fire, Plumas County

Location: Flemmings Sheep Camp, Plumas N.F.

Jurisdiction: Federal DPA, FRA/SRA, Plumas N.F.

Per Cal OES Duty Officers and ICS-209 as of 08/20/20 at 0839 hours:

- 8,441 acres grass, brush and timber 5% contained
- Active fires over 5 acres in the North Complex:
 - Bear Fire: 41 acres, 0% contained
 - Claremont Fire: 3,000 acres, 0% contained
 - Copper Fire: 50 acres, 95% contained
 - Sheep Fire: 5,300 acres, 0% contained
 - 17 other fires currently less than 5 acres or fully contained
- Clairmount fire made a run towards the town of Quincy and La Porte Rd. area
- Sheep fires continues to burn towards Gold Run and Susanville
- Threat to structures
- Threat to private and Federal timberlands
- Threat to historical and cultural sites
- Threat to Upper Feather River Watershed
- Some fires are burning in Steep rugged terrain
- Red Flag Warning in effect for gusty winds and low RH
- California Type 1, Team 1 is in command



FIRE ACTIVITY

Cal OES COASTAL REGION

River, Vegetation Fire, Monterey County

Location: Pine Canyon x River Rd, 5 miles east of Salinas

State DPA, SRA, San Benito-Monterey Unit

Per Cal OES Duty Officers and ICS-209 as of 08/20/20 at 0839 hours:

- 33,653 acres, grass, brush, and oak woodland, 7% contained
- Active fire behavior with wind driven runs, running and single tree torching
- Structures remain threatened in the area of Las Palmas#1, Las Palmas#2, Sierra Village and San Benancio
- Threat to critical communications infrastructure on Mount Toro and Palo Escrito Peak
- Political major economic impact to the community for damage to agriculture
- Steep and rugged terrain making access difficult
- Unified Command CAL FIRE and Monterey County Regional Fire
- CAL FIRE IMT 1 Team 1 in command

Activations

- Monterey County EOC is activated at Level 1 (highest)

Deployments

- 1 Cal OES Fire and Rescue Branch Assistant Chief
- 1 Cal OES Coastal Region ESC
- 5 Cal OES Public Safety Communications Technicians

FMAG

- On 08/16/20 at 2020 hours, an FMAG request was received. Approved by FEMA, 08/16/20 at 2234 hours: FEMA-5329-FM-CA

Proclamations

- Monterey County submitted a Proclamation of a Local Emergency.

Mandatory Evacuations: 735 People / 223 Homes

- Please see the attached LEB 0700 Hrs Fire Status Report for additional information.

Evacuation Warnings: 5,465 People / 1,353 Homes

- Please see the attached LEB 0700 Hrs Fire Status Report for additional information.

Road Closures

- Please see the attached LEB 0700 Hrs Fire Status Report for additional information.



FIRE ACTIVITY

Cal OES COASTAL REGION (Continued)

River, Vegetation Fire, Monterey County (Continued)

Evacuation Centers

- Buena Vista Middle School, 18250 Tara Dr., Salinas

Shelters

- The American Red Cross (ARC) is providing hotel vouchers to assist evacuees:
 - Overnight Count: 1 individuals occupying 1 hotel rooms across 1 hotel
- Carmel Middle School, 4380 Carmel Valley Rd,
- Carmel-By-The-Sea, CA 93923
- Buena Vista Middle School, 18250 Tara Dr., Salinas
- Carmel Valley Library, 65 W. Carvel Valley Rd. Carmel Valley

Red Salmon Complex, Vegetation Fire, Humboldt County

Location: Trinity Alps Wilderness, 14 miles NE of Willow Creek

Jurisdiction: Federal DPA, FRA, Six Rivers N.F and Shasta Trinity N.F.

Per Cal OES Duty Officers and ICS-209 as of 08/20/20 at 0839 hours:

- 16,255 acres, brush and timber, 38% contained
 - Red Fire: 15,448 acres, 19% contained
 - Salmon Fire: 807 acres, 79% contained
- No IR Flight
- Threat to structures in the Red Cap drainage
- Threat remains to cultural and historic sites of the [Karuk, Hoopa, and Yurok Tribes](#)
- [Threat to Spotted Owl Habitat](#)
- Threat to trail systems in the Trinity-Alps Wilderness
- Threat to high value timber
- Road, trail and area closures in effect
- California Type 1, Team 4 in command



FIRE ACTIVITY

Cal OES COASTAL REGION (Continued)

LNU Lightning Complex, Vegetation Fire, Napa, Sonoma & Solano County

Location: Hennessey Ridge Rd x Chiles Pope Valley Rd, 8 miles east of St Helena

Jurisdiction: State DPA, SRA, Sonoma Lake Napa Unit

Per Cal OES Duty Officers and ICS-209 as of 08/20/20 at 0839 hours:

- 131,000 acres, 0% contained
 - Hennessy 105,000 acres, 0% contained
 - Spanish Valley, 4,100 acres, 0% contained
 - Wallbridge 14,500 acres, 0% contained
 - Meyers 3,000 acres, 0% contained
 - Round 4,000 acres, 0% contained
 - Aetna 4,500 acres, 0% contained
- Extreme fire behavior along with long range spotting, continues to challenge suppression efforts
- Continues threat to structures
- Damage inspection is ongoing
- Threats to numerous communities
- Fire has crossed and is impacting Interstate 80
- Major power transmission lines threatened
- Threats to multiple sites of critical infrastructure including CAL FIRE repeater sites
- Threat to private timberland, watershed areas, and several recreational areas
- CAL FIRE IMT-2 in command

Activations

- Napa County EOC is activated at Level 1 (highest)
- Solano County EOS is activated at Level 1 (highest)
- Sonoma County EOC is activated at Level 2
- Lake County EOC is activated at Level 2

Deployments

- 1 Cal OES Law Enforcement Branch Assistant Chief
- 1 Cal OES Fire and Rescue Branch Assistant Chief
- 1 Cal OES Coastal Region Senior ESC
- 8 Cal OES Public Safety Communications Technicians

FMAG

- On 08/17/20 at 1833 hours an FMAG request has been received. Approved by FEMA, 08/17/20 at 2221 hours: FEMA-5331-FM-CA
- On 08/19/20 at 1313 hours, an FMAG request has been received for Napa, Solano, Yolo, Sonoma, and Lake Counties.



Cal OES
GOVERNOR'S OFFICE
OF EMERGENCY SERVICES

13

FIRE ACTIVITY

Cal OES COASTAL REGION (Continued)

LNU Lightning Complex, Vegetation Fire, Napa, Sonoma, & Solano County (Continued)

Proclamations

- Marin County submitted a Proclamation of a Local Emergency.
- Sonoma County submitted a Proclamation of a Local Emergency.
- Solano County submitted a Revised Proclamation of a Local Emergency.
- Solano County submitted a Proclamation of a Local Emergency.

Mandatory Evacuations:

- Napa County: 5,700 People / 1,900 Homes
- Sonoma County: 11,290 People / 5,498 Homes
- Solano County: 10,000+ People
- Lake County: 7,000+ People
- Please see the attached LEB 0700 Hrs Fire Status Report for additional information.

Evacuation Warnings: 35,000 People

- Napa County
- Sonoma County
- Solano County
- Please see the attached LEB 0700 Hrs Fire Status Report for additional information.

Shelter

- The American Red Cross (ARC) is providing hotel vouchers to assist evacuees:
 - Overnight Count: 94 individuals occupying 48 hotel rooms across 2 hotels
- Napa County
 - Crosswalk Community Church, 2590 First St., Napa CA 94558
- Solano County
 - McBride Senior Center, 91 Town Square Pl., Vacaville
 - Ulatis Community Center, 1000 Ulatis Dr., Vacaville
 - Padan School, 200 Padan School Rd., Vacaville
 - Fairmont School, 1355 Marshall Rd., Vacaville
 - Sierra Vista School, 301 Bel Air Dr., Vacaville
 - Vacaville Ice Rink, 551 Davis St., Vacaville
 - Rodriguez High School, 5000 Red Top Rd., Fairfield
 - Joseph Nelson Community Center, 611 Village Center Dr., Suisun City
 - Lambrecht Sports Complex, Lambrech Dr., Suisun City
 - Old Walmart Parking Lot, 300 Chadbourne Rd., Fairfield.



FIRE ACTIVITY

Cal OES COASTAL REGION (Continued)

LNU Lightning Complex, Vegetation Fire, Napa, Sonoma, & Solano County (Continued)

Proclamations

- Marin County submitted a Proclamation of a Local Emergency.
- Sonoma County submitted a Proclamation of a Local Emergency.
- Solano County submitted a Revised Proclamation of a Local Emergency.
- Solano County submitted a Proclamation of a Local Emergency.

Mandatory Evacuations:

- Napa County: 5,700 People / 1,900 Homes
- Sonoma County: 11,290 People / 5,498 Homes
- Solano County: 10,000+ People
- Lake County: 7,000+ People
- Please see the attached LEB 0700 Hrs Fire Status Report for additional information.

Evacuation Warnings: 35,000 People

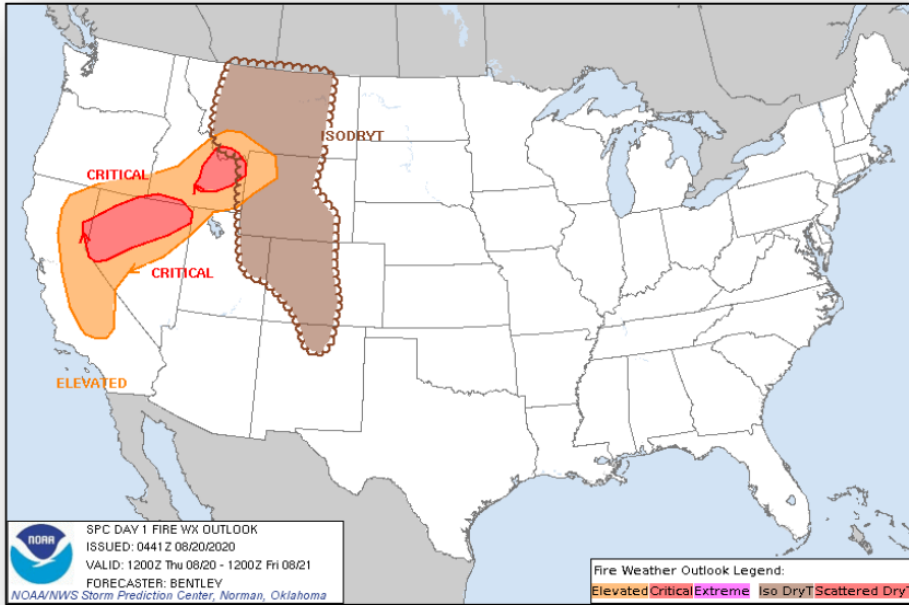
- Napa County
- Sonoma County
- Solano County
- Please see the attached LEB 0700 Hrs Fire Status Report for additional information.

Shelter

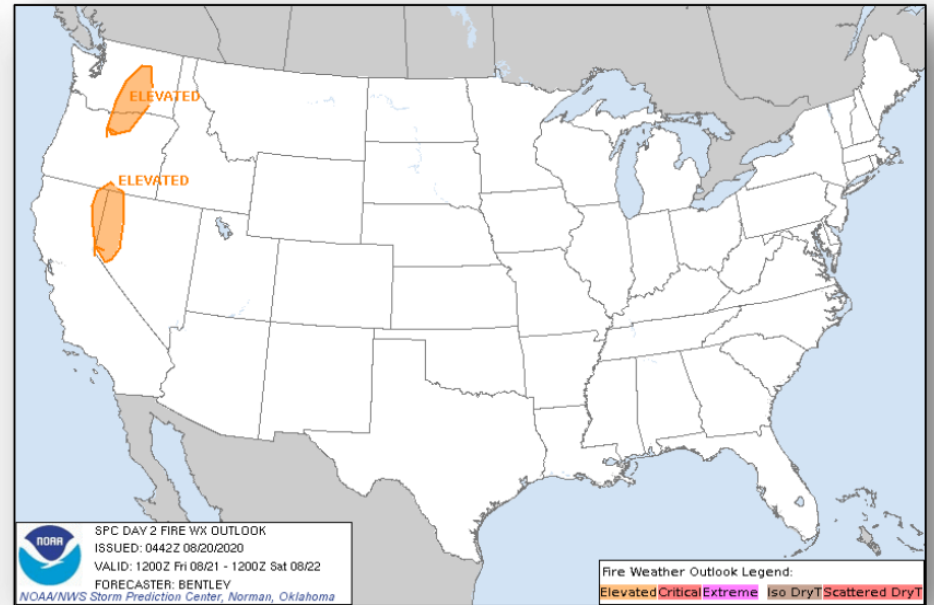
- The American Red Cross (ARC) is providing hotel vouchers to assist evacuees:
 - Overnight Count: 94 individuals occupying 48 hotel rooms across 2 hotels
- Napa County
 - Crosswalk Community Church, 2590 First St., Napa CA 94558
- Solano County
 - McBride Senior Center, 91 Town Square Pl., Vacaville
 - Ulatis Community Center, 1000 Ulatis Dr., Vacaville
 - Padan School, 200 Padan School Rd., Vacaville
 - Fairmont School, 1355 Marshall Rd., Vacaville
 - Sierra Vista School, 301 Bel Air Dr., Vacaville
 - Vacaville Ice Rink, 551 Davis St., Vacaville
 - Rodriguez High School, 5000 Red Top Rd., Fairfield
 - Joseph Nelson Community Center, 611 Village Center Dr., Suisun City
 - Lambrecht Sports Complex, Lambrech Dr., Suisun City
 - Old Walmart Parking Lot, 300 Chadbourne Rd., Fairfield.



Fire Weather Outlook



Today



Tomorrow