



****Extraordinary Assumptions:** There are a lot of different data sources in this report not all of them match but aid to provide an overall picture of the current situation. COVID-19 Data Source Comparison - https://covid-19.splunkforgood.com/covid_19_datasource_comparison

Daily Situation Summary

Tuesday, August 18, 2020

As of 10:00 AM

COVID-19 by the Numbers

08/18/2020	Riverside	Imperial	Kern	Los Angeles	Orange	San Bernardino	San Diego	San Luis Obispo	Santa Barbra	Ventura	California	United States	Global
Total Cases	47,669	8,883	26,520	222,236	43,303	41,724	34,680	2,494	7,368	9,408	628,031	5,382,125	21,756,357
New Cases	949	89	182	1,193	492	493	334	33	30	29	6,469	41,893	206,440
Total Cases Per Capita	2,000	4,929	3,003	2,201	1,369	1,954	1,050	886	1,660	1,109	1,604	1,630	284
New Cases Per Capita	40	49	21	12	16	23	10	12	7	3	17	13	3
Recovered	24,931	9,031	8,432	Not Reported	34,909	32,871	29,600	2,079	7,096	6,780	257,281	2,922,936	14,848,583
Total Deaths	881	257	204	5,254	810	568	626	19	77	95	11,242	169,350	771,635
New Deaths	0	0	0	9	1	0	0	0	0	0	18	654	4,473
Deaths Per Capita	36.97	142.61	23.10	52.03	25.60	26.60	18.95	6.75	17.35	11.20	28.72	51.30	10.06
Presumptive active cases	21,857	-405	17,884		7,584	8,285	4,454	396	195	2,533	359,508	2,289,839	6,136,139
% of State's Cases	7.59%	1.41%	4.22%	35.39%	6.90%	6.64%	5.52%	0.40%	1.17%	1.50%	11.67%	24.74%	
Currently in Hospitals	393	36	181	1,907	478	527	290	25	60	99	6,332		
Total Hospital Beds	3,340	259	1,289	19,678	5,716	3,764	6,615	451	666	1,306	66,617		
Currently in ICU	90	14	70	436	132	130	93	7	22	23	1,589		
ICU Beds Available	92	8	25	881	209	149	324	21	52	51	2,507		
Case Fatality Rate	1.8%	2.9%	0.8%	2.4%	1.9%	1.4%	1.8%	0.8%	1.0%	1.0%	1.8%	3.1%	3.5%
Population*	2,383,286	180,216	883,053	10,098,052	3,164,182	2,135,413	3,302,833	281,455	443,738	848,112	39,148,760	330,129,039	7,673,076,000
% of Population	6.09%	0.46%	2.26%	25.79%	8.08%	5.45%	8.44%	0.72%	1.13%	2.17%	0.19%	0.0701%	

Sources: CDPH, WHO, CDC

The date for which case statistics and hospital data were reported. Hospital COVID data are self-reported through a portal managed by the California Hospital Association and pulled at 2pm. COVID case statistics are reported by local health departments to CalREDIE and are pulled at 2pm. Hospital data and case statistics are integrated by the California Department of Technology and made available through the Open Data Portal the following morning. CA Open Data Portal is at least 24 Hours behind

*California-Demographics.com made by Cubit - a demographic data provider & census.gov

Presumptive active cases - A calculation (Total Cases - Recovered - Dead) (LA County does not report recovery rates and Imperial County case data reporting is delayed to the state data source)

News

More detail on page 3

US Data

More detail on page 7

Riverside County Data

More detail on page 13

Global Data

More detail on page 6

State Data

More detail on page 11

Weather

More detail on page 14

News

New Zealand Postpones Elections As It Scrambles To Contain New Coronavirus Outbreak

- Prime Minister Jacinda Ardern announced Monday she is delaying New Zealand's general elections by about a month as the nation moves to contain a new cluster of COVID-19 cases in its most populous city, Auckland.
- Ardern, who has the sole authority to set elections for the country, said she consulted the heads of the major political parties before setting the new date.
- Voting was originally scheduled for Sept. 19 but will now take place Oct. 17.
- The outbreak of new coronavirus cases prompted the government to implement safety measures late last week, with Auckland operating at an Alert Level 3, while the rest of the country is operating at the lower Alert Level 2.
- Both alerts are set to expire just before midnight on Aug. 26 and fall short of the top tier Level 4 emergency alert, which is lockdown.
<https://www.npr.org/sections/coronavirus-live-updates/2020/08/17/903198608/new-zealand-postpones-elections-as-it-scrambles-to-contain-new-outbreak>

RELATED

New Zealand Investigates A Mystery: Where Did Its New Cases Come From?

<https://www.npr.org/sections/coronavirus-live-updates/2020/08/14/902675290/new-zealand-investigates-a-mystery-where-did-its-new-cases-come-from>

South Korea Faces New Spike In COVID-19 After Months Of Low Infection Rates

- After keeping the coronavirus under control for roughly five months, South Korea finds itself on the verge of another major outbreak as COVID-19 cases jump to their highest level since March and the capital region retightens social distancing guidelines.
- As of Monday, the country has seen four straight days of new cases in the triple digits, for a four-day total of 745 cases. That compares with a peak of about 900 cases per day in late February, after which South Korea managed to keep new daily cases to double digits. As of Monday, South Korea reports a cumulative total of 15,515 cases with 305 deaths.
- Over the weekend, the capital region raised its alert to Level 2 in a three-tier system. For the next two weeks, sports will revert to spectator less games; indoor gatherings of 50 people or more, or outdoor ones of 100 or more will be advised to cancel or postpone.
- Authorities fear that the virus has been spreading undetected for some time and is only surfacing now. KCDC chief Jeong warned Monday that without swift government intervention, South Korea "may face a health system collapse."
<https://www.npr.org/sections/coronavirus-live-updates/2020/08/17/903157458/south-korea-faces-new-spike-in-covid-19-after-months-of-low-infection-rates>

DOLE orders all workers to wear face shields (Philippines)

- Wearing of face shields on top of face masks will be mandatory in workplaces starting on Saturday to prevent the spread of COVID-19, the Department of Labor and Employment (DOLE) said yesterday.
- Labor Secretary Silvestre Bello III issued the announcement on the sidelines of a government event in Antipolo, Rizal, where he revealed the new guideline agreed upon by the Inter-Agency Task Force (IATF) for the Management of Emerging Infectious Diseases.
- "Based on a resolution of the IATF, not only would workers be required to use face masks, but also face shields. That's the new protocol," Employees who have no face shields would be denied entry.
- The IATF also approved a new workplace policy, mandating that only one person at a time would be allowed in smoking lounges.

- The Department of Transportation recently required passengers in public vehicles to wear face shields on top of face masks starting Aug. 15.
- Many local government units (LGUs) nationwide have passed ordinances requiring the use of face masks when going outside.
- President Duterte said defying the rule is tantamount to committing serious crime and merits arrest.
- Several LGUs implemented “no face shields, no face masks, no entry” policy in public and private spaces such as mass transport, business establishments, isolation facilities, hospitals, workplaces and markets.
- The virus can enter the body through the nose, mouth and even the eyes, prompting health authorities to advise frequent handwashing, wearing of face masks in public and physical distancing.
- Vendors in Manila are warned against overpricing face shields, city bureau of permits chief Levi Facundo said.
<https://www.philstar.com/headlines/2020/08/13/2034928/dole-orders-all-workers-wear-face-shields>

How Should I Cover My Face? A Deeper Look Into Neck Gaiters And Face Shields

- Between face shields, neck gaiters and goggles, the options for protection are getting more complex. What face covering setup offers the best safeguard from the virus?
- There's been a lot of face covering news this week. A study from Duke University looked at the effectiveness of a variety of coverings and resulted in headlines such as this from *The Washington Post*: "[Wearing a neck gaiter may be worse than no mask at all, researchers find.](#)"
- Dr. Michael Edmond, infectious disease specialist at the University of Iowa, has a few points to make about the study.
- "One thing to realize is that they [tested only] one gaiter, made of neck fleece — which is a very thin fleece," Edmond says. That's a synthetic material. He says: "I'd be interested to know if the gaiter tested was made of a different fabric with multiple layers if it'd be more protective."
- In other words, he'd like to see more data before knowing whether to discount *all* gaiters.
- One thing is clear from the research: Wearing a face covering can save lives
<https://www.npr.org/sections/goatsandsoda/2020/08/14/902244060/how-should-i-cover-my-face-a-deeper-look-into-neck-gaiters-and-face-shields>

Spain Cracks Down On Outdoor Drinking, Smoking In Renewed Push Against COVID-19

- Spanish authorities — facing a new wave of COVID-19 after tamping down the disease months ago — have ordered the closing of nightclubs, banned the consumption of alcohol and even prohibited smoking outdoors in cases where social distancing cannot be guaranteed.
<https://www.npr.org/sections/coronavirus-live-updates/2020/08/14/902526343/spain-cracks-down-on-outdoor-drinking-smoking-in-renewed-push-against-covid-19>

New Saliva-Based COVID-19 Test Could Detect Virus Within Hours

- A new test for COVID-19 that promises to deliver results within three hours has been granted emergency approval by the Food and Drug Administration.
- The good news? The method, called SalivaDirect, costs only \$10, making it far cheaper than previous COVID-19 tests that often run as much as \$150. The great news? You don't have to use a nasal swab. Instead, a person's saliva is collected and is broken down with an enzyme and applied heat. The test can even be used for asymptomatic carriers.
- "I think it will take weeks, if not longer, for this test to become more widely available," Dr. William Schaffner with Vanderbilt University said. "But as it comes online, I think people will like it much better than the more intrusive nasal swab test."

- The researchers say they are not looking to commercialize the test, but rather want their simplified method of testing for COVID-19 to get out to as many diagnostic laboratories as possible to help those most in need. Laboratory delays and shortages of tests have been a major stumbling block for health officials in the fight against the pandemic.

<https://kfiam640.iheart.com/content/2020-08-17-new-cheap-saliva-based-covid-19-test-could-detect-virus-within-hours/>

Half Of Cherokee High Schools Closed From Coronavirus Outbreaks (Canton, GA)

- Half of Cherokee County's high schools are now closed through the end of the month, with students transitioning to digital learning after multiple students and staff tested positive for the coronavirus.
- On Sunday, the district said that effective immediately, it is temporarily closing in-person learning at Creekview High School. Reopening is tentatively scheduled for Aug. 31. This decision was made with the support of school board members and in consideration with the Department of Public Health, the district said.
- Over the weekend, the number of positive virus cases at Creekview High School increased to a total of 25, with 500 of its 1,800 in-person students now under precautionary quarantine, Cherokee Schools said Sunday in a [news release](#). Additional tests pending that would significantly increase the quarantine total, the district said.

<https://patch.com/georgia/canton-ga/half-cherokee-high-schools-closed-coronavirus-outbreaks>

Teachers Call In Sick Due to COVID-19 Safety Concerns

- Phoenix, Arizona— The J.O. Combs Unified School District has delayed reopening after nearly half of its teachers called in sick out of concern for their health due to the COVID-19 pandemic
- The district had voted to reopen August 17 despite teachers participating in “motor marches” in July to protest reopening, reports Newsweek. Administrators, however, did an about face on Friday due to an overwhelming number of teacher and staff no-shows. Of the approximately 250 teachers in the district, 109 had put in for absences on the first day of school. Additionally, since July 1, 23 employees have resigned from the district.

https://www.campusafety.com/news/teachers-call-in-sick-due-to-covid-19-safety-concerns/?utm_source=newsletter&utm_medium=email&utm_campaign=content&eid=429065932&bid=2668328

LA Meets Five Of State's Six Coronavirus Benchmarks For Reopening

- Efforts to slow the spread of the coronavirus have helped Los Angeles reach five of the six benchmarks necessary for the city to lift pandemic restrictions. That final benchmark — the rate of new infections — remains far off goal.
- Los Angeles has been here before. Having successfully slowed the outbreak in the spring, the city rapidly reopened businesses and lifted restrictions in May and June only to see a rapid surge in new cases, hospitalizations and deaths. The lesson, say health officials, is not to get complacent. Gatherings remain one of the biggest threats to the city's recovery, according to the Los Angeles County's public health director.
- "We know that a person can be positive for COVID-19 and able to transmit the virus to others without ever, ever having any symptoms, or even being aware that they are infected," Barbara Ferrer said. "If this person attends a gathering, especially indoors, where they're socializing, eating, drinking, potentially not wearing a face covering or distancing, they can easily infect many other people who are at the gathering doing the same.
- Los Angeles County won't get off the state's monitoring list until it can cut the rate of new case from the current 14-day average of 295 new cases per 100,000 residents to 100 new cases or less. The state's monitoring list prevents reopening of schools and many

businesses. As of Monday morning, 42 of the 58 counties in the state were on the list, although San Diego County is expected to be removed by Tuesday, according to Gov. Gavin Newsom.

<https://patch.com/california/los-angeles/la-meets-five-states-six-coronavirus-benchmarks-reopening>

One Good Thing

- Stories about the kindness of strangers and individuals who sacrifice for others.
<https://apnews.com/OneGoodThing> & <https://www.goodnewsnetwork.org/>

Some Good News: An 'Elephant Baby Boom' In One Kenyan National Park

- Amboseli National Park in Kenya is experiencing something of an elephant baby boom.
- The park, which sits at the foot of Mt. Kilimanjaro, has reported the birth of more than 170 calves this year and counting. What's more, two sets of twins were born this year, a rare occurrence according to Amboseli Trust For Elephants, a nonprofit conservation group in Kenya.
- By contrast, the Trust reported 113 new calves born in 2018. (2019 is not a good year for comparison because the gestation period for elephant pregnancies is up to two years.)

<https://www.npr.org/2020/08/14/902177466/some-good-news-an-elephant-baby-boom-in-one-kenyan-national-park>



National Zoo Panda Mei Xiang Pregnant, Birth Could Come In Days

- Zookeepers at Smithsonian's National Zoo are on baby alert after concluding that giant panda matriarch Mei Xiang is pregnant and could give birth this week. It's a welcome bit of good news amid a pandemic that kept the zoo shuttered for months.
- "We need this! We totally need this joy," zoo spokeswoman Pamela Baker-Masson said. "We are all in desperate need of these feel-goods." Although so-called "phantom pregnancies" are common with pandas and other large bears, Baker-Masson said an ultrasound scan revealed a "really strong-looking, fantastic fetus" that could be delivered this week.
- Veterinarians detected tissue consistent with fetal development during giant panda Mei Xiang's ultrasound on Aug. 14. It is too early to determine if the tissue is a completely viable developing fetus, as there is the potential that the fetus could be resorbed, experts posted on the [National Zoo website](https://www.nationalzoo.org/).

<https://patch.com/district-columbia/washingtondc/national-zoo-panda-mei-xiang-pregnant-birth-could-come-days>

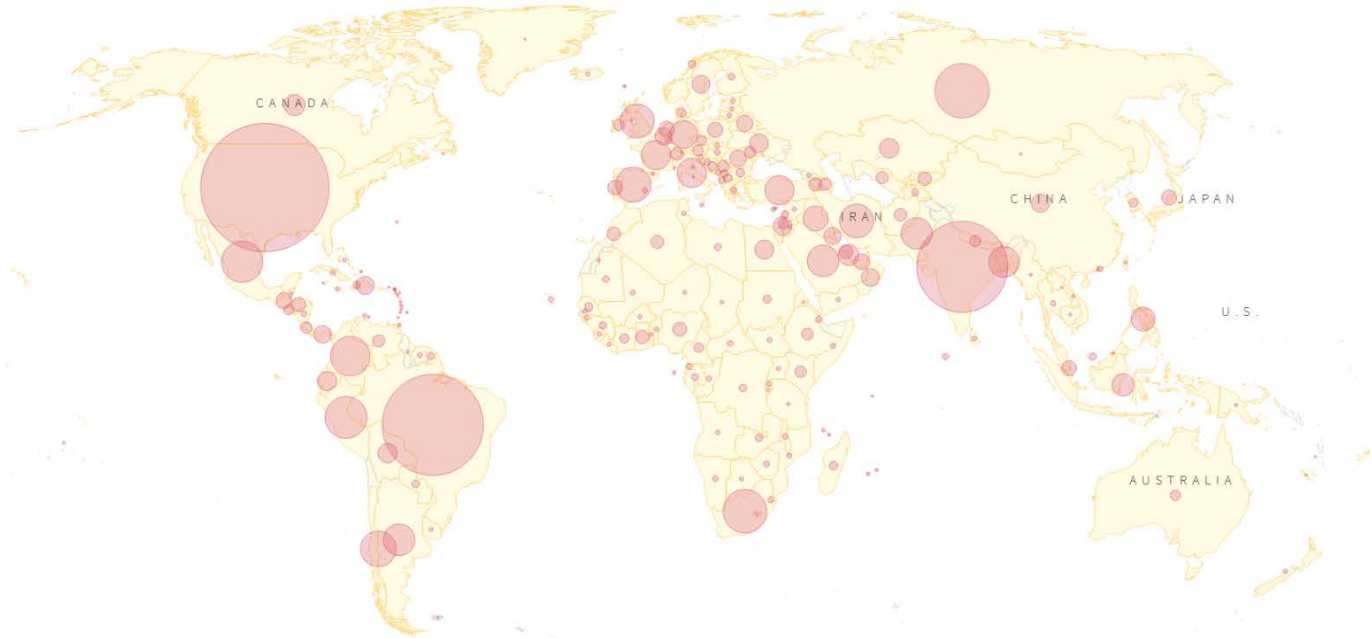


Global Data

Time-lapse <https://graphics.reuters.com/CHINA-HEALTH-MAP/0100B59S39E/index.html>

Tracking the spread of the novel coronavirus

LAST UPDATED: AUGUST 18, 2020 06:16 AM



August 17, 2020

21,983,350 cases

Replay

At least **774,329 people** globally have died from COVID-19 and **21,983,350 have been infected** by the novel coronavirus that causes it, following an outbreak that started in Wuhan, China, in early December. The World Health Organization referred to it as a pandemic on March 11, 2020.

Active cases: **7,367,252 (33.50%)**

Deaths: **774,329 (3.50%)**

People recovered: **13,841,769 (63.00%)**

Though the outbreak started in China, it has now reached 220 countries and territories. 196 of those have reported fatalities.

REPORTED STATISTICS GLOBALLY

Cumulative Daily

Deaths Other confirmed cases Recovered

<https://graphics.reuters.com/CHINA-HEALTH-MAP/0100B59S39E/index.html>

Totals

Rates

Location	Status of cases	▼ Cases	Deaths	Recoveries (where reported)
Total		21,983,350	774,329	13,841,769
Latin America		6,212,519	243,118	4,439,774
North America		5,583,976	179,616	2,207,114
Asia		4,072,911	81,525	3,026,490
Europe		3,280,322	203,595	1,852,885
Middle East		1,675,231	40,101	1,448,734
Africa		1,132,678	25,927	850,492
Oceania		25,713	447	16,280
United States		5,460,923	170,575	2,097,890
Brazil		3,359,570	108,536	2,478,494
India		2,702,743	51,797	1,977,779
Russia		932,493	15,872	742,628
South Africa		589,886	11,982	477,671
Peru		541,493	26,481	370,717
Mexico		525,733	57,003	355,101
Colombia		479,892	15,372	301,525
Chile		387,501	10,513	360,385
Spain		376,936	28,646	150,376
United Kingdom		349,769	41,369	344
Iran		347,835	19,972	300,881
Saudi Arabia		299,914	3,436	268,385
Argentina		299,126	5,709	217,850
Pakistan		289,215	6,175	269,087
Bangladesh		279,144	3,694	160,591
Italy		254,235	35,400	203,968
France		253,687	30,429	84,065
Turkey		250,542	5,996	231,971

Location	Status of cases	▼ Cases	Recovery Rate	Fatality Rate
Total		21,983,350	62.96%	3.52%
Latin America		6,212,519	71.46%	3.91%
North America		5,583,976	39.53%	3.22%
Asia		4,072,911	74.31%	2.00%
Europe		3,280,322	56.48%	6.21%
Middle East		1,675,231	86.48%	2.39%
Africa		1,132,678	75.09%	2.29%
Oceania		25,713	63.31%	1.74%
United States		5,460,923	38.42%	3.12%
Brazil		3,359,570	73.77%	3.23%
India		2,702,743	73.18%	1.92%
Russia		932,493	79.64%	1.70%
South Africa		589,886	80.98%	2.03%
Peru		541,493	68.46%	4.89%
Mexico		525,733	67.54%	10.84%
Colombia		479,892	62.83%	3.20%
Chile		387,501	93.00%	2.71%
Spain		376,936	39.89%	7.60%
United Kingdom		349,769	0.10%	11.83%
Iran		347,835	86.50%	5.74%
Saudi Arabia		299,914	89.49%	1.15%
Argentina		299,126	72.83%	1.91%
Pakistan		289,215	93.04%	2.14%
Bangladesh		279,144	57.53%	1.32%
Italy		254,235	80.23%	13.92%
France		253,687	33.14%	11.99%
Turkey		250,542	92.59%	2.39%

U.S. Data

Covid-19 Case Cluster (past 48 hours)

<https://www.cdc.gov/covid-data-tracker/index.html#social-impact>

Social Impact COVID-19 Events in the United States

16 EVENTS
Past 48 hours

Map of news reports related to social impact events resulting from the COVID-19 outbreak in the United States, such as school closures, localized outbreaks, state of emergency declarations, etc.

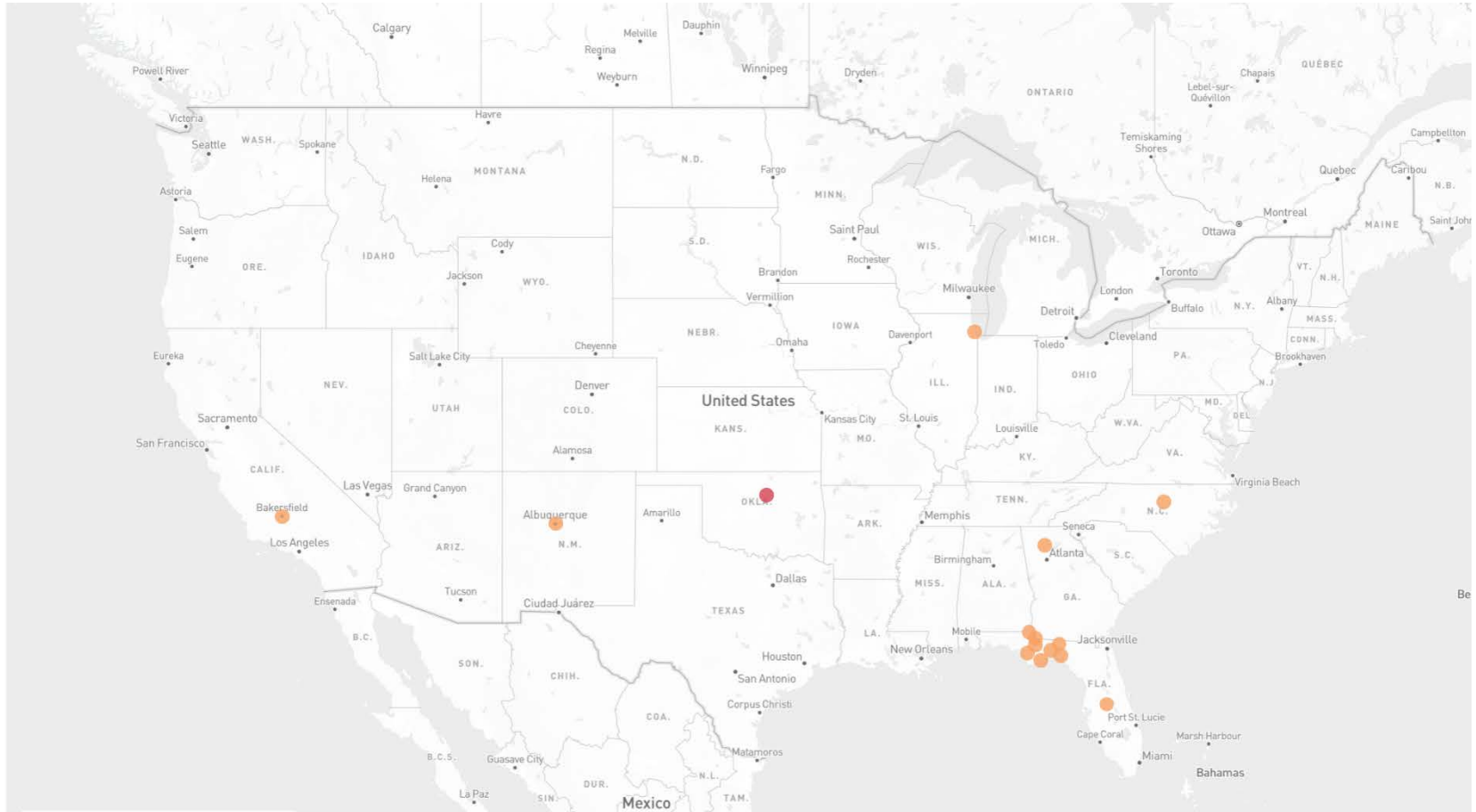
DATE RANGE

Past 48 hours

TYPE OF EVENT ?

COVID-19 Case Clusters

[About this Map](#) | Developed by HealthMap



Articles:

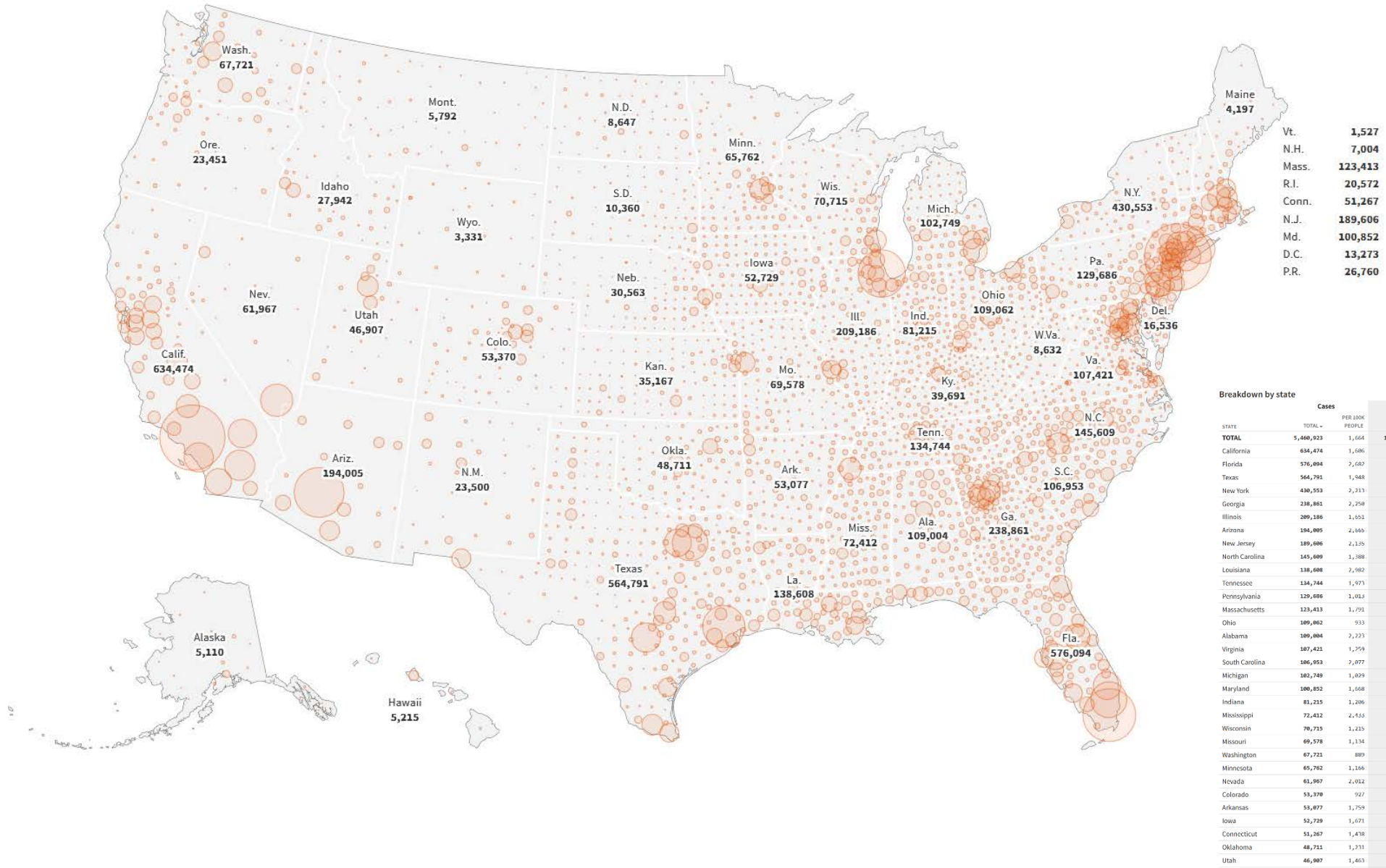
- [CFD's Quinn Fire Academy Shut Down After COVID-19 Outbreak Among Students, Instructors](#)
- [University of New Mexico 35 people test positive for COVID-19 as fall term commences](#)
- [Federal judge orders COVID-19 testing at Bakersfield immigration detention facility](#)
- [University of North Carolina has four Covid-19 clusters less than a week after starting classes](#)
- [Oklahoma State sorority house reports 23 coronavirus cases](#)
- [Georgia's Cherokee County closes third high school for COVID-19 concerns](#)

Tracking the novel coronavirus in the U.S.



<https://graphics.reuters.com/HEALTH-CORONAVIRUS-USA/0100B5K8423/index.html>

Select a state for detail



Vt.	1,527
N.H.	7,004
Mass.	123,413
R.I.	20,572
Conn.	51,267
N.J.	189,606
Md.	100,852
D.C.	13,273
P.R.	26,760

Breakdown by state

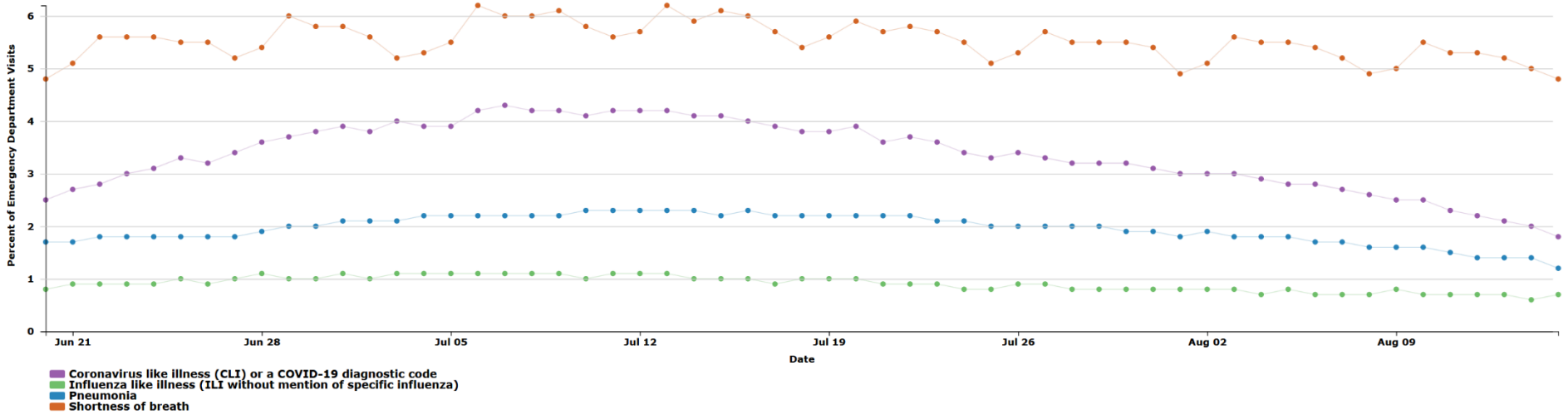
STATE	Cases		Deaths	
	TOTAL	PER 100K PEOPLE	TOTAL	PER 100K PEOPLE
TOTAL	5,460,923	1,664	170,575	52
California	634,474	1,606	11,342	29
Florida	576,094	2,682	9,674	45
Texas	564,791	1,948	10,553	36
New York	430,553	2,213	32,540	167
Georgia	238,861	2,250	4,727	45
Illinois	209,186	1,651	7,967	63
Arizona	194,005	2,665	4,506	62
New Jersey	189,606	2,135	15,916	179
North Carolina	145,609	1,388	2,355	22
Louisiana	138,608	2,982	4,526	97
Tennessee	134,744	1,973	1,387	20
Pennsylvania	129,686	1,011	7,515	59
Massachusetts	123,413	1,791	8,842	128
Ohio	109,062	933	3,832	33
Alabama	109,004	2,223	1,925	39
Virginia	107,421	1,759	2,385	28
South Carolina	106,953	2,077	2,288	44
Michigan	102,749	1,029	6,592	66
Maryland	100,852	1,668	3,641	60
Indiana	81,215	1,206	3,135	47
Mississippi	72,412	2,452	2,095	70
Wisconsin	70,715	1,215	1,046	18
Missouri	69,578	1,134	1,441	23
Washington	67,721	889	1,785	23
Minnesota	65,762	1,166	1,758	31
Nevada	61,967	2,012	1,077	25
Colorado	53,370	927	1,096	33
Arkansas	53,077	1,759	683	20
Iowa	52,729	1,671	981	31
Connecticut	51,267	1,418	4,456	125
Oklahoma	48,711	1,731	665	17
Utah	46,907	1,463	365	11

United States Trends in Emergency Department Visits

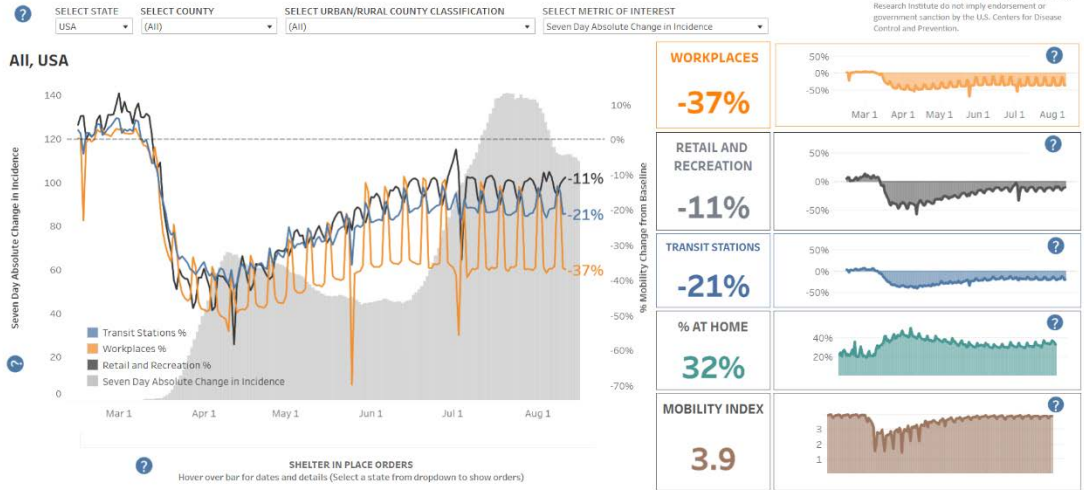
United States



Percentage of ED visits by syndrome in United States: COVID-19-Like Illness, Shortness of Breath, Pneumonia, and Influenza-Like Illness



EXPLORE HUMAN MOBILITY AND COVID-19 TRANSMISSION IN YOUR LOCAL AREA



Data Sources: Case data are courtesy of USAFacts.org. Refer to USAFacts for methods of data collection and processing. Officially verified U.S. case data are available on CDC's U.S. Cases page. The mobility metrics are generated utilizing Google Mobility Reports (<https://www.google.com/covid19/mobility/>), Self-reporth Social Distancing Metrics (<https://www.self-reporth.com/covid19/social-distancing/>), and Google Mobility Insights (<https://www.google.com/covid19/mobility/>). The shelter in place orders are collected and compiled by CDC's COVID-19 response.

Limitations: The Google Mobility Reports data are not updated as frequently as other sources and often has a lag between updates. The Self-reporth Social Distancing Metrics may undercount the number of at-home devices due to the fact that GPS does not register as often for people who are stationary. Also, GPS does not consistently update throughout the day, therefore someone may have taken a short trip (or not taken the device) and returned home before a sample was taken. In this case they would be counted as at-home. The shelter in place order data does not contain other types of government orders.

COVID-19 Update



Situation: Upward trajectory in COVID-19 case count continues across 7 (+4) states, with 4 (-2) states in a plateau status, and 45 (-2) states on a downward trajectory. 23,799 (-328) Federal employees deployed / activated; 1,986 (-41) FEMA employees deployed.

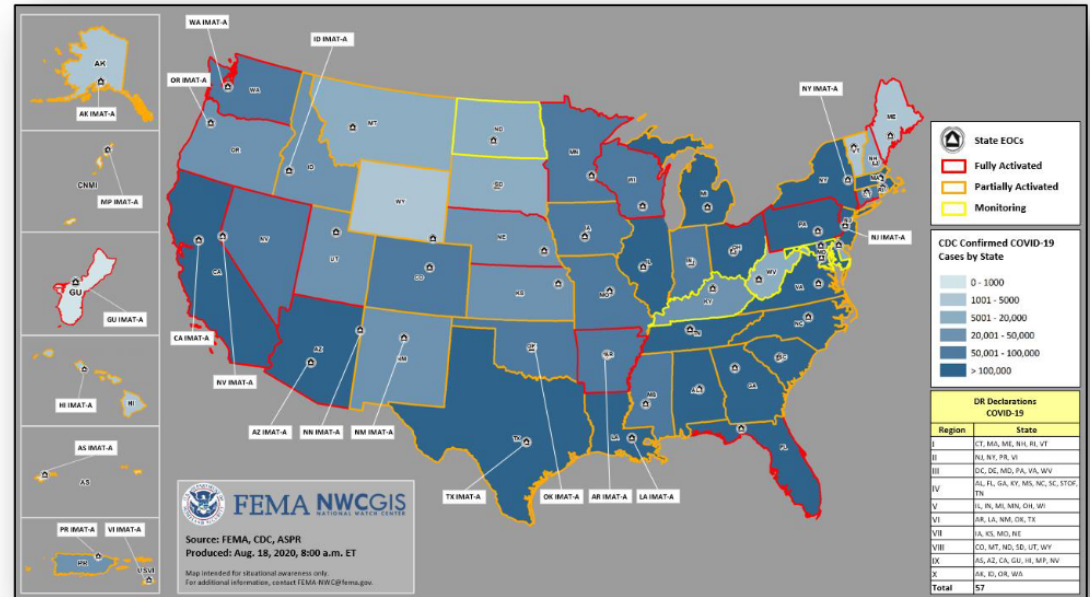
Nationwide Testing: 72,810,378 cumulative as of Aug 17

COVID-19 positive cases continue to increase globally (CDC COVID-19 update as of Aug 17)

- Confirmed Cases of COVID-19
 - United States: 5,382,125 (+41,893)
 - Worldwide: 21,549,706 (+250,285)
- Deaths caused by COVID-19
 - United States: 169,350 (+654)
 - Worldwide: 767,158 (+5,345)

Response:

- NRCC at Level I
- Regions I, II, III, V, VI, VII, & X RRCCs at Level III
- Regions IV, VIII, & IX RRCCs are rostered
- Regions VII, VIII & IX COVID-19 response being worked from the Virtual JFO
- NWC, all RWCs, and MOCs are monitoring



(COVID-19 SLB, as of Aug 17)

State Data

<https://covid19.ca.gov/>
<https://update.covid19.ca.gov/#top>
<https://www.cdph.ca.gov/Programs/CID/DCDC/Pages/Immunization/ncov2019.aspx#>

Statewide industry guidance to reduce risk

<https://covid19.ca.gov/industry-guidance/#top>
<https://www.cdph.ca.gov/Programs/CID/DCDC/Pages/Guidance.aspx>

Open sectors in counties with variance

<https://covid19.ca.gov/roadmap-counties/#track-data>
<https://covid19.ca.gov/roadmap-counties/>

Data models

<https://covid19.ca.gov/data-and-tools/>

CDPH News Releases 2020

<https://www.cdph.ca.gov/Programs/OPA/Pages/New-Release-2020.aspx>

State Officials Announce Latest COVID-19 Facts

August 14, 2020 - The California Department of Public Health today announced the most recent statistics on COVID-19.

State Officials Announce Latest COVID-19 Facts

August 13, 2020 - In the past few days, working in partnership with the California Department of Technology (CDT), the California Department of Public Health (CDPH) cleared the data backlog reported last week and has continued processing new case records.

State Officials Announce Latest COVID-19 Facts

August 12, 2020 - In the past few days, working in partnership with the California Department of Technology (CDT), the California Department of Public Health (CDPH) cleared the data backlog reported last week and has continued processing new case records.

State Officials Announce Latest COVID-19 Facts

August 11, 2020 - The California Department of Public Health today announced the most recent statistics on COVID-19.

State Officials Announce Latest COVID-19 Facts

August 10, 2020 - The California Department of Public Health today announced the most recent statistics on COVID-19.



California COVID-19 By The Numbers

August 17, 2020

Numbers as of August 16, 2020

CALIFORNIA COVID-19 SPREAD

628,031 (+6,469)
CASES

Ages of Confirmed Cases

- 0-17: 61,538
- 18-49: 378,186
- 50-64: 119,629
- 65+: 67,816
- Unknown/Missing: 862

Gender of Confirmed Cases

- Female: 315,642
- Male: 305,562
- Unknown/Missing: 6,827

11,242 (+18)

Fatalities

Hospitalizations

Confirmed COVID-19
4,975/1,589
Hospitalized/in ICU

Suspected COVID-19
1,357/222
Hospitalized/in ICU

For county-level
hospital data:
bit.ly/hospitalsca

Your actions **save lives.**

For county-level data:
data.chhs.ca.gov
covid19.ca.gov



County Data Monitoring

<https://www.cdph.ca.gov/Programs/CID/DCDC/Pages/COVID-19/COVID19CountyDataTable.aspx>

Chart last updated on August 14, 2020

		Elevated Disease Transmission		Increasing Hospitalization**	Limited Hospital Capacity**	
Threshold	<150	Case Rate >100 OR Case Rate >25 AND Positivity >8%		>10% Increase	<20% ICU Beds Available OR <25% Ventilators Available	
County	Avg # tests per day (per 100,000 population) (7)	Case rate per 100,000	Testing positivity (%) (7 day)	% Change in 3-day avg COVID+ hospitalized	% ICU beds currently	% Ventilators currently
Alameda*	---	---	---	✓	✓	✓
Alpine	---	---	---	---	---	---
Amador	---	---	---	✓	✓	✓
Butte*	---	---	---	✓	5.3	✓
Calaveras	---	---	---	✓	✓	✓
Colusa*	---	---	---	✓	---	✓
Contra Costa*	---	---	---	✓	✓	✓
Del Norte	---	---	---	✓	✓	✓
El Dorado	---	---	---	✓	✓	✓
Fresno*	---	---	---	✓	5.8	✓
Glenn*	---	---	---	---	---	✓
Humboldt	---	---	---	✓	✓	✓
Imperial*	---	---	---	✓	✓	✓
Inyo	---	---	---	✓	✓	✓
Kern*	---	---	---	✓	✓	✓
Kings*	---	---	---	✓	✓	✓
Lake	---	---	---	✓	✓	✓
Lassen	---	---	---	---	---	✓
Los Angeles*	---	---	---	✓	✓	✓
Madera*	---	---	---	✓	✓	✓
Marin*	---	---	---	✓	✓	✓
Mariposa	---	---	---	---	---	✓
Mendocino	---	---	---	✓	✓	✓
Merced*	---	---	---	✓	✓	✓

California Statistics

Total Population: 40,129,160

Note: There were 7,873 newly recorded confirmed cases Saturday. Numbers do not represent true day-over-day change as these results include cases from prior to yesterday.

112,400

New Cases (Last 14 Days)

280.1 Per 100K

621,562 Total Cases

1,868

New Deaths (Last 14 Days)

4.7 Per 100K

11,224 Total Deaths

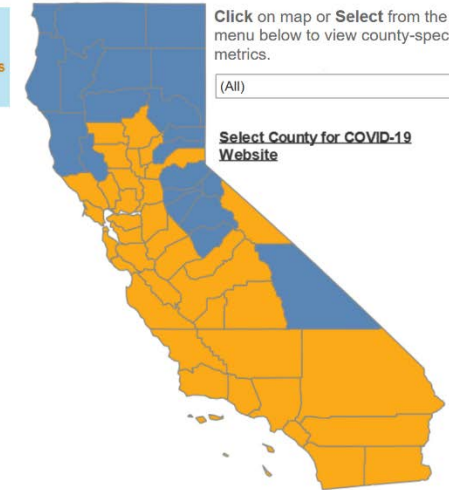
1,762,159

Tests Reported (Last 14 Days)

6.4% Test Positivity

3.1 Daily per 1,000 Residents

9,798,135 Total Tests Reported



■ Not on Monitoring List
■ On Monitoring List for 3+ days, new restrictions in place

Riverside County Data

<https://www.rivcoph.org/coronavirus>

RUHS Public Health News:

- [ADVISORY FOR THE OPERATION OF SCHOOLS](#) - August 14, 2020
- Public health officer issues statement on school waiver process [English](#) / [Spanish](#) / [School Waivers Info](#) - August 5, 2020
- Youth sports may resume with social distancing [English](#) / [Spanish](#) - August 5, 2020
- State Governor Orders - [Guidance for the use of Face Coverings](#) - August 05, 2020
- [Updated Advisory for the Operation of Youth Sports](#) - August 5, 2020
- Board of Supervisors vote 5-0 to declare racism as a public health crisis [English](#) / [Spanish](#) - Aug 4, 2020
- [\\$2 Million Approved to Launch Youth Community Corps](#) - August 4, 2020

Daily Epidemiology Summary updated 8-17-2020

https://rivcoph.org/Portals/0/Documents/CoronaVirus/August/Dashboard/Public%20Daily_COVID-19_Updates%208.17.20.pdf?ver=2020-08-17-162940-630×tamp=1597708903784

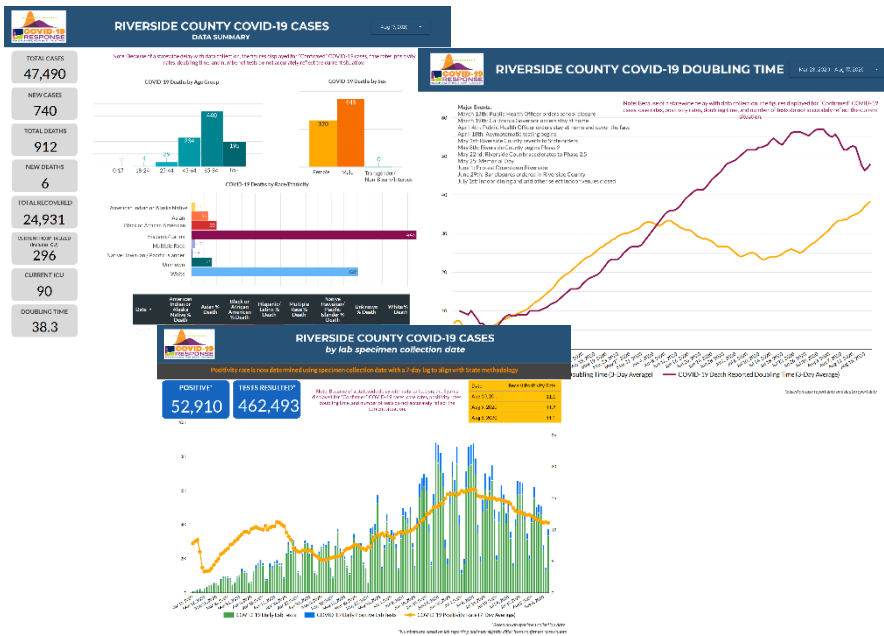


Chart last updated on August 14, 2020

		Elevated Disease Transmission	Increasing Hospitalization**	Limited Hospital Capacity**		
Threshold	<150	Case Rate >100 OR Case Rate >25 AND Positivity >8%	>10% Increase	<20% ICU Beds Available OR <25% Ventilators Available		
County	Avg # tests per day (per 100,000 population) (7 day average with a 7 day lag)	Case rate per 100,000 (14 days)	Testing positivity (%) (7 day average with a 7 day lag)	% Change in 3-day avg COVID+ hospitalized patients	% ICU beds currently available	% Ventilators currently available
Riverside*	165.5	196.2	11.1	✓	✓	✓

Weather

COVID-19 Weather Support

Issued:

1100 AM August 17, 2020

NATIONAL WEATHER SERVICE
SAN DIEGO, CA

IMPACT SCALE

None Minor Moderate High Extreme

Resources

- <https://www.weather.gov/spot/>
- <https://inws.ncep.noaa.gov>
- <https://www.wrh.noaa.gov/sgx/event/dsstable.php>

(858) 675 - 8705
(24/7, Restricted)

Weather.gov/SanDiego

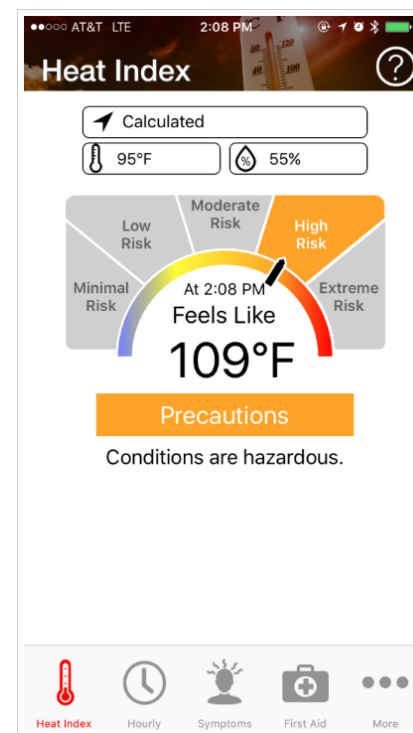
7-day Forecast for Counties in far Southwest CA

Period Aug 17 - Aug 24 (24-hr)	Orange	SW San Bernardino	All Deserts	Western Riverside	San Diego
Today	Very Warm Inland	Very Hot	Very Hot	Very Hot	Very Warm Inland
Tuesday	Very Hot Inland	Very Hot	Very Hot	Very Hot	Very Hot Inland
Wednesday	Hot Inland	Very Hot	Very Hot	Very Hot	Hot Inland
Thursday	Hot Inland	Very Hot	Very Hot	Very Hot	Hot Inland
Friday	Very Warm Inland	Very Warm	Hot	Very Warm	Very Warm Inland
Saturday	Warm Inland	Very Warm	Hot	Very Warm	Warm Inland
Sunday	Warm Inland	Very Warm	Hot	Very Warm	Warm Inland
Monday	Warm Inland	Very Warm	Hot	Very Warm	Warm Inland

Forecast Discussion

Excessive heat will persist across all inland areas through much of this week, particularly across the deserts and Inland Empire. High temps will diminish several degrees late week, but temps look to remain above average through early next week. Isolated thunderstorms may develop across the mountains and move into the high deserts this afternoon; dry lightning and erratic winds will be the main hazards. A higher chance for scattered storms will develop region-wide on Tuesday, with the impacts most likely across the mountains and Inland Empire.

Make sure you get the OSHA Heat Safety Tool



The App allows workers and supervisors to calculate the **heat index** for their worksite, and, based on the heat index, displays a **risk level** to outdoor workers. Then, with a simple "click," you can get reminders about the **protective measures** that should be taken at that risk level to protect workers from heat-related illness—reminders about drinking enough fluids, scheduling rest breaks, planning for and knowing what to do in an emergency, adjusting work operations, gradually building up the workload for new workers, training on heat illness signs and symptoms, and monitoring each other for signs and symptoms of heat-related illness.

https://www.osha.gov/SLTC/heatillness/heat_index/heat_app.html

Tropical Outlook – Atlantic

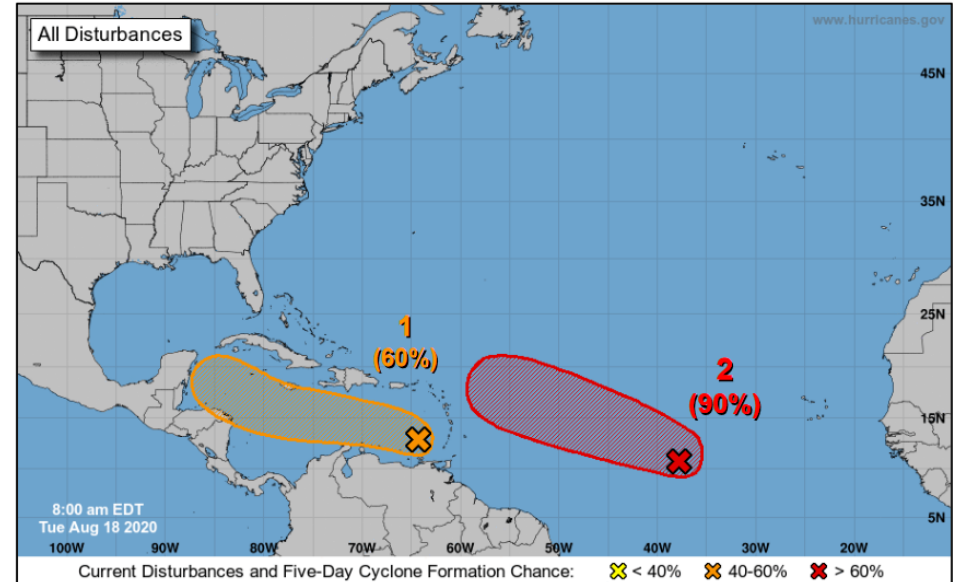


Disturbance 1 (as of 8:00 a.m. ET)

- Located over the eastern Caribbean Sea
- Moving W at 20 mph
- Conditions could become more conducive for the development of a tropical depression later this week
- Formation chance through 48 hours: Low (20%)
- Formation chance through 5 days: Medium (60%)

Disturbance 2 (as of 8:00 a.m. ET)

- 700 miles WSW of the Cabo Verde Islands
- Moving W to WNW at 15-20 mph
- A tropical depression is likely to form within the next day or two
- Formation chance through 48 hours: High (70%)
- Formation chance through 5 days: High (90%)



Current Disturbances & 5 Day Cyclone Formation: < 40% 40-60% > 60%	Potential track area: Day 1-3 Day 4-5	Watches: Hurricane Trop Stm	Warnings: Hurricane Trop Stm	Current wind extent: Hurricane Trop Stm
Tropical / Sub-Tropical Cyclone: Depression Storm Hurricane Post-Tropical Cyclone / Remnants				

Tropical Outlook – Eastern Pacific



Tropical Cyclone Genevieve (CAT 3) (Advisory #8 as of 5:00 a.m. ET)

- 215 miles WSW of Manzanillo, Mexico
- Moving NW at 17 mph
- Maximum sustained winds 115 mph
- Additional rapid strengthening is forecast during the next 12 to 24 hours
- Hurricane force winds extend 30 miles
- Tropical-storm-force winds extend outward up to 150 miles



Current Disturbances & 5 Day Cyclone Formation: < 40% 40-60% > 60%	Potential track area: Day 1-3 Day 4-5	Watches: Hurricane Trop Stm	Warnings: Hurricane Trop Stm	Current wind extent: Hurricane Trop Stm
Tropical / Sub-Tropical Cyclone: Depression Storm Hurricane Post-Tropical Cyclone / Remnants				

Tropical Outlook – Eastern Pacific



Tropical Cyclone Genevieve (CAT 3) (Advisory #8 as of 5:00 a.m. ET)

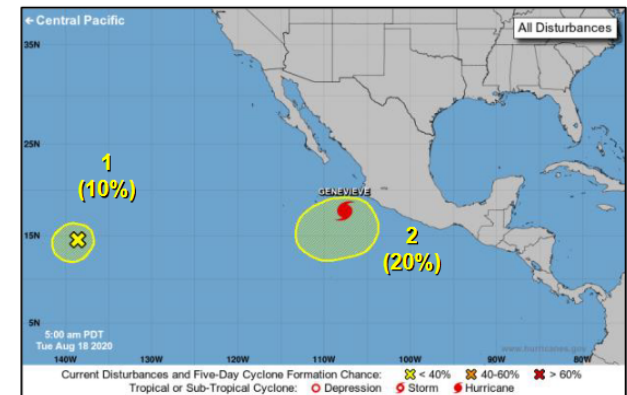
- 215 miles WSW of Manzanillo, Mexico
- Moving NW at 17 mph
- Maximum sustained winds 115 mph
- Additional rapid strengthening is forecast during the next 12 to 24 hours
- Hurricane force winds extend 30 miles
- Tropical-storm-force winds extend outward up to 150 miles

Disturbance 1 (as of 8:00 a.m. ET)

- Located over the far southwestern portion of the basin and associated with the remnant low of Tropical Depression Ten-E
- Moving slowly W
- Conditions do not appear conducive for significant development and regeneration of this system is not anticipated
- Formation chance through 48 hours: Low (10%)
- Formation chance through 5 days: Low (10%)

Disturbance 2 (as of 8:00 a.m. ET)

- Expected to form later this week several hundred miles W of the southwestern coast of Mexico
- Conditions appear favorable for some development over the weekend
- Formation chance through 48 hours: Low (near 0%)
- Formation chance through 5 days: Low (20%)



Current Disturbances & 5 Day Cyclone Formation: ✕ < 40% | ✕ 40-60% | ✕ > 60%
 Tropical / Sub-Tropical Cyclone: ○ Depression | ● Storm | ● Hurricane | ○ Post-Tropical Cyclone / Remnants

Potential track area:
 Day 1-3 Day 4-5

Watches:
 Hurricane Trop Stm

Warnings:
 Hurricane Trop Stm

Current wind extent:
 Hurricane Trop Stm

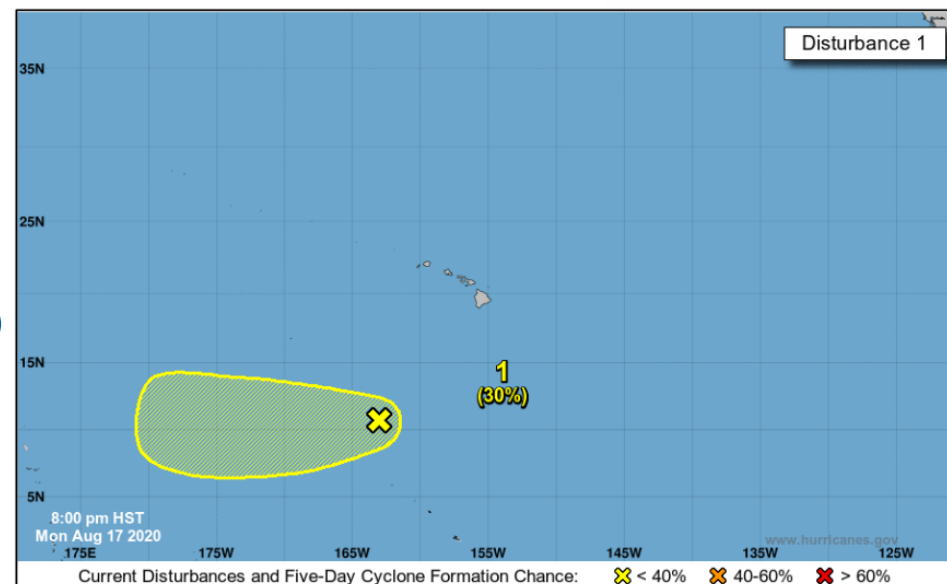
Tropical Outlook – Central Pacific



FEMA

Disturbance 1 (as of 2:00 a.m. ET)

- 800 miles SSW of Honolulu, HI
- Conditions are not expected to be conducive for development over the next few days but may improve as the system continues westward and nears the Date Line later in the week
- Formation chance through 48 hours: Low (near 0%)
- Formation chance through 5 days: Low (30%)



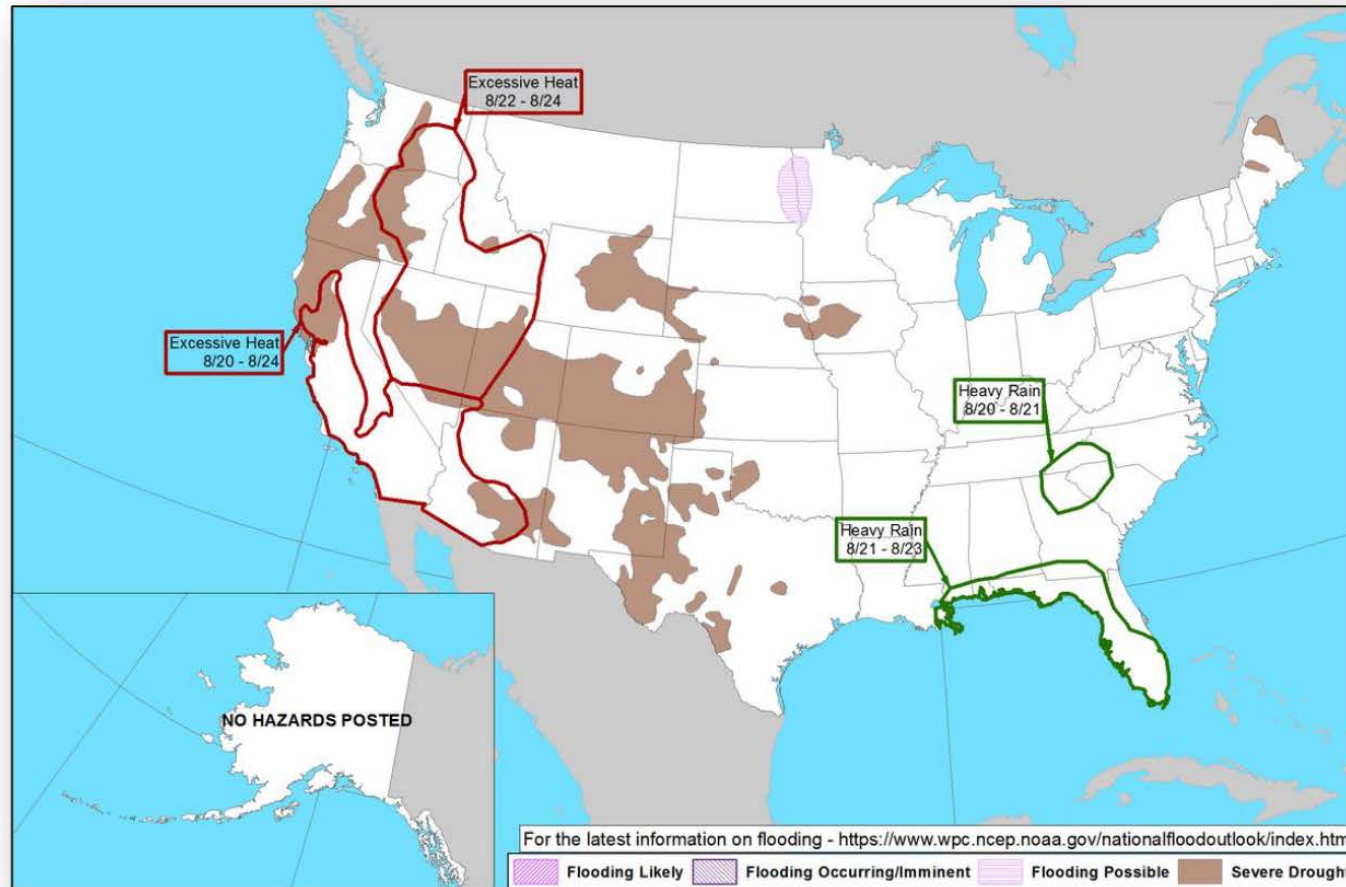
Current Disturbances & 5 Day Cyclone Formation: < 40% | 40-60% | > 60%
 Tropical / Sub-Tropical Cyclone: Depression | Storm | Hurricane | Post-Tropical Cyclone / Remnants

Potential track area: Day 1-3 | Day 4-5
 Watches: Hurricane | Trop Stm
 Warnings: Hurricane | Trop Stm
 Current wind extent: Hurricane | Trop Stm

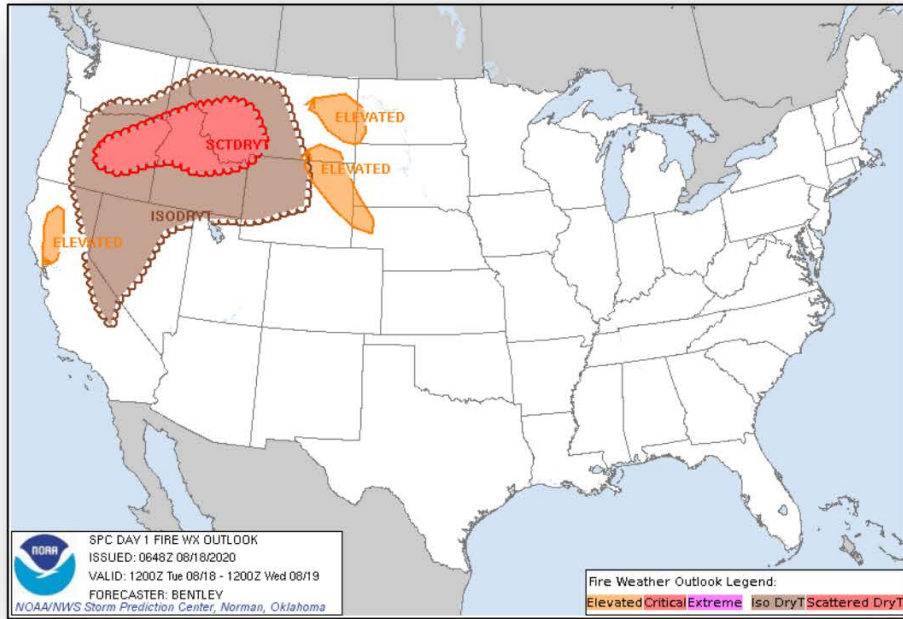
Hazards Outlook – Aug 20-24



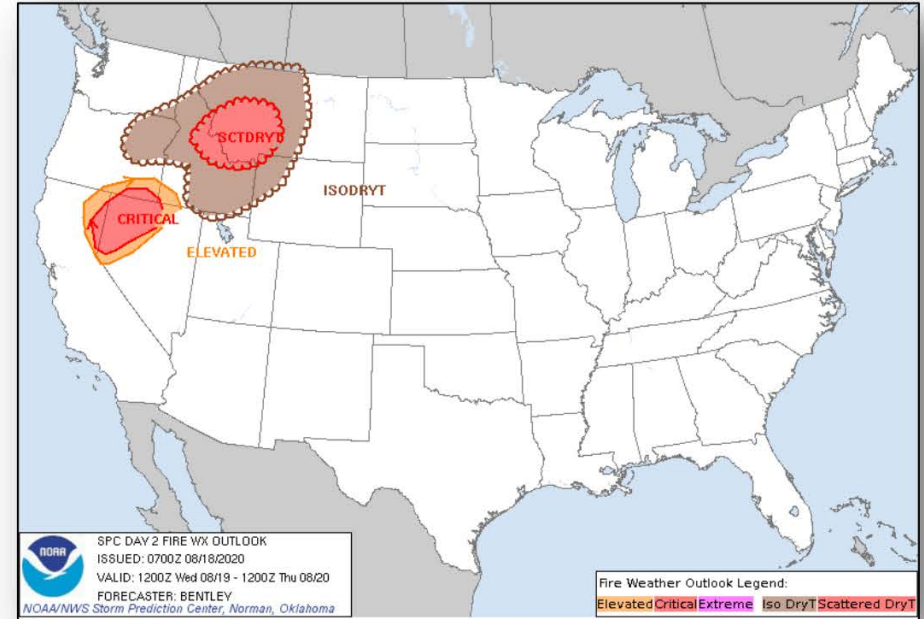
FEMA



Fire Weather Outlook



Today



Tomorrow

Severe Weather Outlook



FEMA

