



****Extraordinary Assumptions:** There are a lot of different data sources in this report not all of them match but aid to provide an overall picture of the current situation. COVID-19 Data Source Comparison - https://covid-19.splunkforgood.com/covid_19_datasource_comparison

Daily Situation Summary

Tuesday, August 11, 2020

As of 10:00 AM

COVID-19 by the Numbers

08/11/2020	Riverside	Imperial	Kern	Los Angeles	Orange	San Bernardino	San Diego	San Luis Obispo	Santa Barbra	Ventura	California	United States	Global
Total Cases	41,894	8,310	23,680	208,810	39,244	36,092	32,749	2,124	6,669	8,633	561,911	5,023,649	19,718,030
New Cases	482	97	877	1,839	556	401	417	43	71	171	7,751	48,690	253,409
Total Cases Per Capita	1,758	4,611	2,682	2,068	1,240	1,690	992	755	1,503	1,018	1,435	1,522	257
New Cases Per Capita	20	54	99	18	18	19	13	15	16	20	20	15	3
Recovered	21,989	8,682	7,202	Not Reported	30,657	28,642	26,913	1,839	6,618	5,178	223,334	2,719,380	13,276,744
Total Deaths	799	244	171	4,977	726	546	594	17	69	89	10,359	161,842	728,013
New Deaths	0	0	0	10	6	44	1	0	0	0	66	558	5,719
Deaths Per Capita	33.53	135.39	19.36	49.29	22.94	25.57	17.98	6.04	15.55	10.49	26.46	49.03	9.49
Presumptive active cases	19,106	-616	16,307		7,861	6,904	5,242	268	-18	3,366	328,218	2,142,427	5,713,273
% of State's Cases	7.46%	1.48%	4.21%	37.16%	6.98%	6.42%	5.83%	0.38%	1.19%	1.54%	11.19%	25.48%	
Currently in Hospitals	454	48	229	1,992	521	553	324	21	82	102	6,770		
Total Hospital Beds	3,300	261	1,282	19,199	5,631	3,742	6,135	451	666	1,318	65,027		
Currently in ICU	112	14	72	490	152	152	92	6	31	21	1,727		
ICU Beds Available	123	7	37	819	255	155	346	20	41	47	2,574		
Case Fatality Rate	1.9%	2.9%	0.7%	2.4%	1.8%	1.5%	1.8%	0.8%	1.0%	1.0%	1.8%	3.2%	3.7%
Population*	2,383,286	180,216	883,053	10,098,052	3,164,182	2,135,413	3,302,833	281,455	443,738	848,112	39,148,760	330,058,400	7,669,357,000
% of Population	6.09%	0.46%	2.26%	25.79%	8.08%	5.45%	8.44%	0.72%	1.13%	2.17%	0.17%	0.0655%	

Sources: CDPH, WHO, CDC

The date for which case statistics and hospital data were reported. Hospital COVID data are self-reported through a portal managed by the California Hospital Association and pulled at 2pm. COVID case statistics are reported by local health departments to CalREDIE and are pulled at 2pm. Hospital data and case statistics are integrated by the California Department of Technology and made available through the Open Data Portal the following morning. CA Open Data Portal is at least 24 Hours behind

*California-Demographics.com made by Cubit - a demographic data provider & census.gov

Presumptive active cases - A calculation (Total Cases - Recovered - Dead) (LA County does not report recovery rates and Imperial County case data reporting is delayed to the state data source)

News

More detail on page 3

State Data

More detail on page 8

Weather

More detail on page 10

US Data

More detail on page 4

Riverside County Data

More detail on page 9

Earthquake Forecast

More detail on page 17

News

Uganda's prisoner population surges, raising fears of COVID-19 outbreak

- Uganda has recorded a 10% increase in the number of people in jail since March, a prison official told Reuters on Friday, with thousands jailed for alleged violations of coronavirus lockdown rules.
- By imposing one of Africa's strictest lockdowns, the country of 42 million has registered just 1,213 COVID-19 cases and five deaths from the disease, despite crumbling public hospitals, doctors' strikes and corruption scandals.
- But there have been at least three cases of the novel coronavirus in jails, fuelling concerns it could spread among prisoners. About 30 inmates who feared infection have escaped since the pandemic hit Uganda, though some have since been recaptured.
<https://www.reuters.com/article/us-health-coronavirus-uganda-prisons/ugandas-prisoner-population-surges-raising-fears-of-covid-19-outbreak-idUSKCN2531KA>

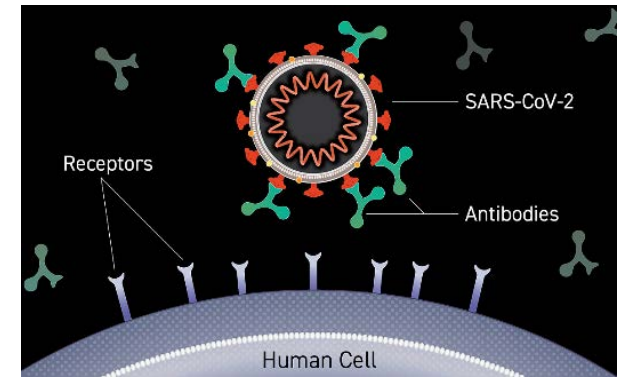
CDC info on Wildfire Smoke and COVID-19

- Wildfire smoke can irritate your lungs, cause inflammation, affect your immune system, and make you more prone to lung infections, including SARS-CoV-2, the virus that cause COVID-19. Because of the COVID-19 pandemic, preparing for wildfires might be a little different this year. Know how wildfire smoke can affect you and your loved ones during the COVID-19 pandemic and what you can do to protect yourselves.
- Take actions to protect yourself from wildfire smoke during the COVID-19 pandemic.
 - The best way to protect against the potentially harmful effects of wildfire smoke is to reduce your exposure to wildfire smoke, for example, by seeking cleaner air shelters and cleaner air spaces.
 - Limit your outdoor exercise when it is smoky outside or choose lower-intensity activities to reduce your smoke exposure.
- Keep in mind that while social distancing guidelines are in place, finding cleaner air might be harder if public facilities such as libraries, community centers, and shopping malls are closed or have limited their capacity.
- Create a cleaner air space at home to protect yourself from wildfire smoke during the COVID-19 pandemic.
 - Use a portable air cleaner in one or more rooms. Portable air cleaners work best when run continuously with doors and windows closed.
 - If you use a do-it-yourself box fan filtration unit, never leave it unattended.
 - During periods of extreme heat, pay attention to temperature forecasts external and know how to stay safe in the heat.
 - Whenever you can, use air conditioners, heat pumps, fans, and window shades to keep your cleaner air space comfortably cool on hot days.
 - If you have a forced air system in your home, you may need to speak with a qualified heating, ventilation, and air conditioning (HVAC) professional about different filters (HEPA or MERV-13 or higher) and settings ("Recirculate" and "On" rather than "Auto") you can use to reduce indoor smoke.
 - Avoid activities that create more indoor and outdoor air pollution, such as frying foods, sweeping, vacuuming, and using gas-powered appliances.

https://www.cdc.gov/disasters/covid-19/wildfire_smoke_covid-19.html?deliveryName=USCDC_2067-DM35083

Clinical trials of monoclonal antibodies to prevent COVID-19 now enrolling

- Two Phase 3, randomized, placebo-controlled, double-blind clinical trials testing whether experimental monoclonal antibodies (mAbs) can prevent infection by SARS-CoV-2 coronavirus are now enrolling healthy adults at clinical trial sites in the United States. Many of the trial sites and study investigators are part of the COVID-19 Prevention Network(link is external) (CoVPN), recently established by the National Institute of Allergy and Infectious Diseases (NIAID), one of the National Institutes of Health. SARS-CoV-2 is the virus that causes coronavirus disease 2019 (COVID-19). The trials are enrolling adults who are at risk of infection due to close contact at work or home to persons with SARS-CoV-2 infection.
- “The COVID-19 Prevention Network is designed to conduct large-scale trials rapidly and efficiently,” said NIAID Director Anthony S. Fauci, M.D. “This network will allow us to test the safety and efficacy of monoclonal antibodies and other preventive measures to help identify how best to reduce the level of SARS-CoV-2 infection and ultimately end the COVID-19 pandemic.”
- Monoclonal antibodies(link is external) are laboratory-made versions of proteins naturally produced by the immune system in response to invading viruses or other pathogens. Neutralizing antibodies, whether natural or monoclonal, can bind directly to portions of viruses that they use to attach to and enter cells, preventing them from initiating the infection cycle. Monoclonal antibodies may provide short-term protection from SARS-CoV-2 and could serve as important components of the COVID-19 pandemic response until vaccines become available.
- One trial is being conducted jointly by NIAID and trial sponsor Regeneron Pharmaceuticals of Tarrytown, New York. It will evaluate Regeneron’s investigational double mAb combination, REGN-COV-2, which is designed to bind to two points on the SARS-CoV-2 spike protein and prevent it from entering healthy cells. The trial will enroll approximately 2,000 asymptomatic adults who are household contacts of persons with SARS-CoV-2 infection. Participants must have been in close contact (typically due to residing at the same address) with the infected person in a 96-hour window preceding administration of either REGN-CoV-2 or placebo. In addition to assessing safety, the trial will seek to define whether REGN-COV-2 can prevent infection or disease symptoms in those already infected. The efficacy assessment will be a one-month period following administration of REGN-COV-2 or placebo. All trial participants will be followed for safety for seven months after efficacy assessment period ends.
<https://www.nih.gov/news-events/news-releases/clinical-trials-monoclonal-antibodies-prevent-covid-19-now-enrolling>



Addressing the Twin Challenges of Substance Use Disorders and COVID-19

<https://directorsblog.nih.gov/2020/08/11/addressing-the-twin-challenges-of-substance-use-disorders-and-covid-19/>

One Good Thing

- Stories about the kindness of strangers and individuals who sacrifice for others.
<https://apnews.com/OneGoodThing> & <https://www.goodnewsnetwork.org/>

U.S. Data

Covid-19 Case Cluster (past 48 hours)

<https://www.cdc.gov/covid-data-tracker/index.html#social-impact>

Social Impact COVID-19 Events in the United States

13 EVENTS
Past 48 hours

Map of news reports related to social impact events resulting from the COVID-19 outbreak in the United States, such as school closures, localized outbreaks, state of emergency declarations, etc.

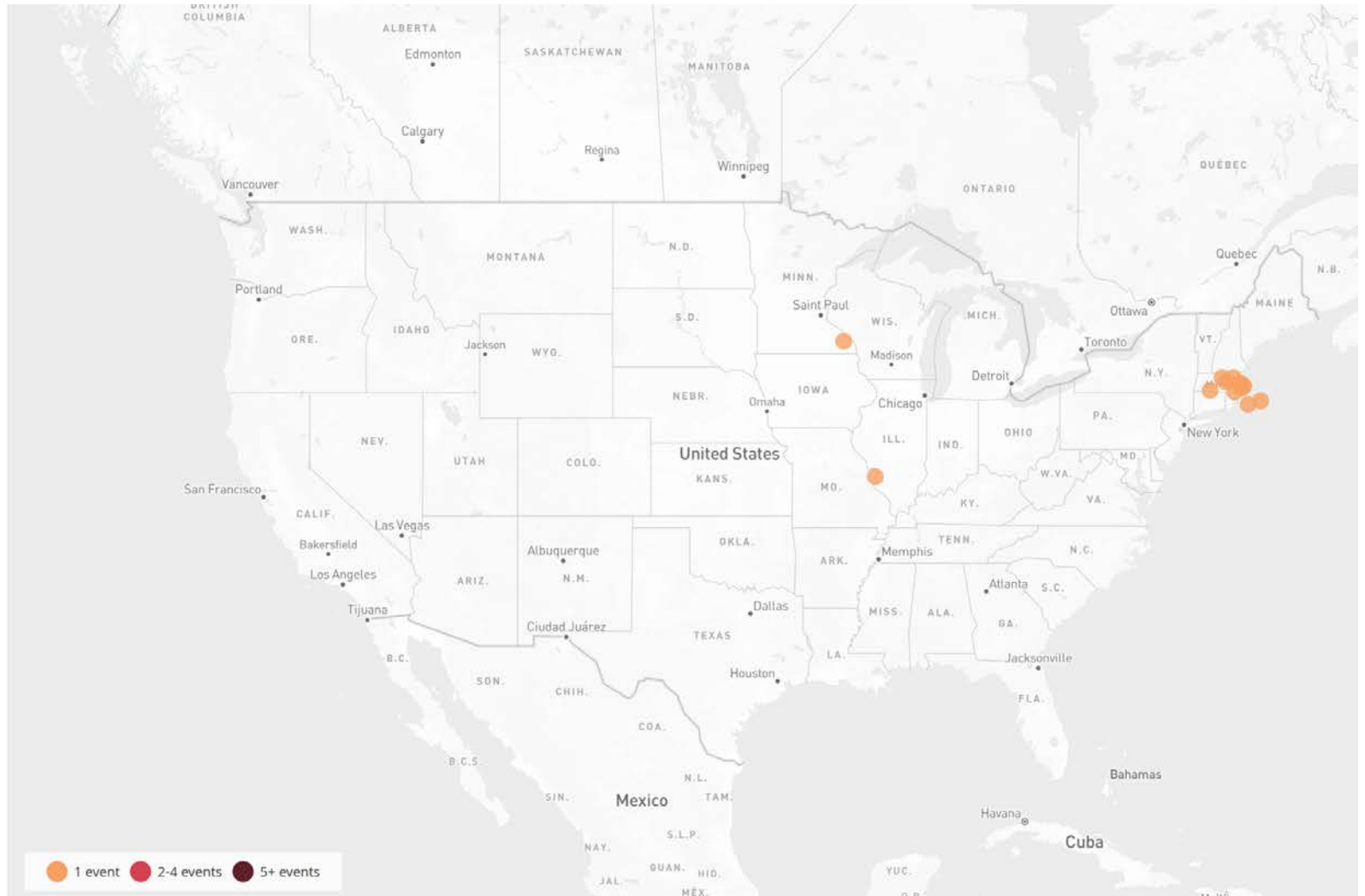
DATE RANGE

Past 48 hours

TYPE OF EVENT ?

COVID-19 Case Clusters

About this Map | Developed by HealthMap

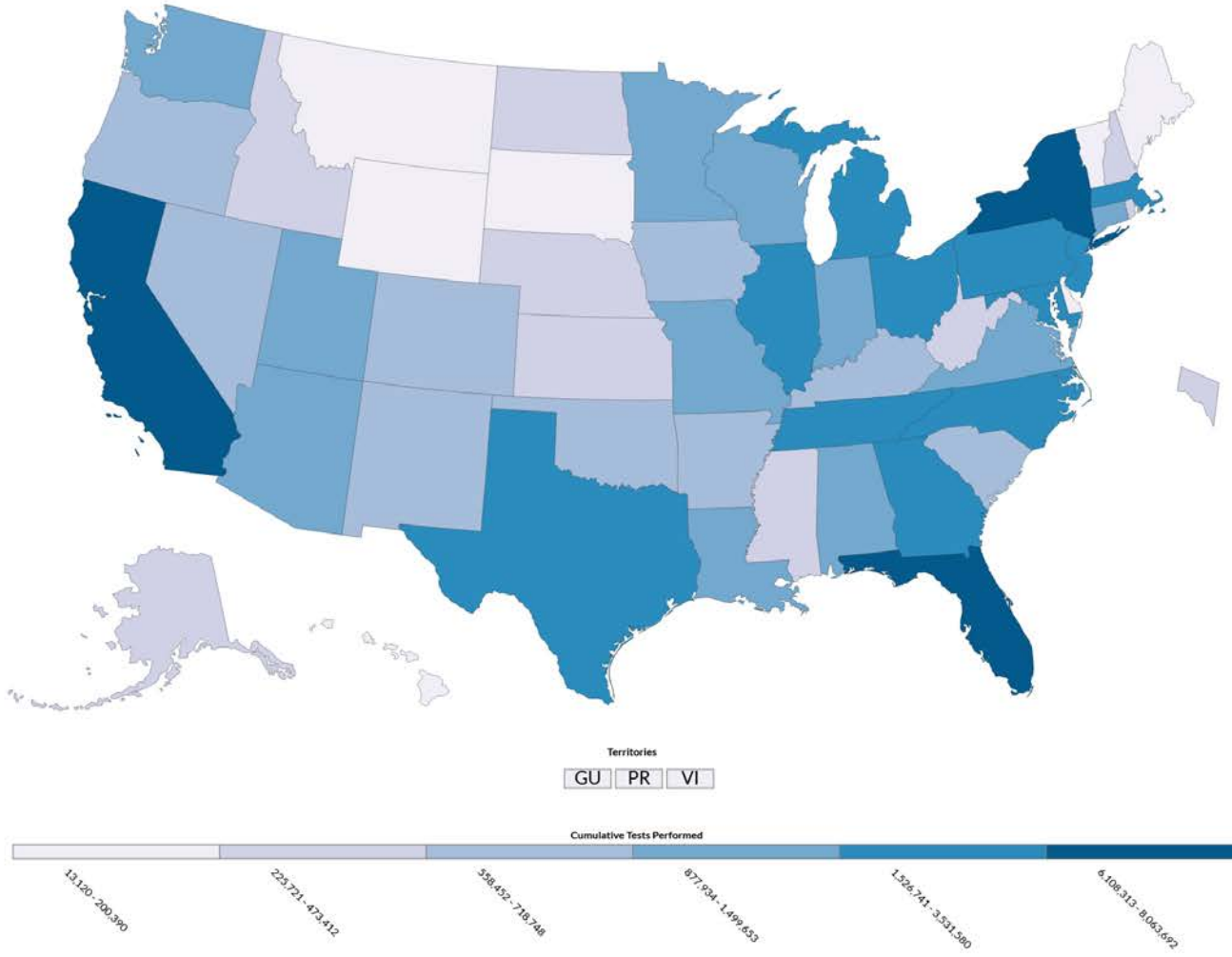


United States Laboratory Testing

Commercial and Reference, Public Health, and Hospital Laboratories

COVID-19 Laboratory Tests Performed by State/Territory

Preliminary data: Reported by U.S. Laboratories including Commercial and Reference, Public Health, and Hospital
Totals may include antibody data from some states



COVID-19 Tests Performed by State (Commercial and Reference, Public Health, and Hospital)

State	# Tests Performed	% Positive
California	8,063,692	6-10%
New York	6,488,097	6-10%
Florida	6,108,313	11-20%
Illinois	3,531,580	6-10%
Texas	3,270,130	11-20%
Michigan	2,233,341	6-10%
Tennessee	2,139,806	6-10%
Pennsylvania	1,884,177	6-10%
Georgia	1,692,568	11-20%
New Jersey	1,678,236	0-5%
Massachusetts	1,667,893	6-10%
Ohio	1,638,731	6-10%
North Carolina	1,619,558	6-10%
Maryland	1,526,741	6-10%
Louisiana	1,499,653	11-20%
Wisconsin	1,437,579	0-5%
Indiana	1,341,209	6-10%
Arizona	1,271,510	11-20%
Virginia	1,264,508	11-20%
Minnesota	1,173,260	6-10%
Washington	1,064,911	6-10%
Missouri	1,052,180	6-10%
Alabama	1,047,302	11-20%
Utah	886,398	6-10%
Connecticut	877,934	6-10%
Oregon	718,748	0-5%
Iowa	703,824	6-10%
South Carolina	702,100	11-20%
Colorado	690,105	6-10%
Nevada	660,829	6-10%
Kentucky	641,957	6-10%
New Mexico	575,118	0-5%
Arkansas	568,445	6-10%
Oklahoma	558,452	6-10%
Kansas	473,412	6-10%
Nebraska	451,238	11-20%
Rhode Island	394,905	6-10%
North Dakota	362,106	0-5%
West Virginia	338,383	0-5%
Mississippi	309,498	6-10%
Idaho	284,228	11-20%

CDC | Updated: Aug 10 2020 12:15PM

USA
66,824,014
TESTS REPORTED
CDC | Updated: Aug 10 2020 12:15PM

USA
5,990,322
POSITIVE TESTS
CDC | Updated: Aug 10 2020 12:15PM

USA
9%
OVERALL % POSITIVE
CDC | Updated: Aug 10 2020 12:15PM

Coronavirus Pandemic Whole-of-America Response

Medical Supplies and Equipment

- As of Aug. 7, FEMA, HHS, and the private sector coordinated delivery of or are currently shipping: **208.8** million N95 respirators, **889.5** million surgical masks, **38.1** million face shields, **374.8** million surgical gowns/coveralls and over **22.5** billion gloves.
- As of Aug. 7, FEMA delivered **30,458** medical supplies to nursing homes to 52 states and territories. One hundred percent of scheduled shipments have been made.
 - **FEMA coordinated two shipments** totaling a 14-day supply of personal protective equipment to all 15,400 Medicaid and Medicare-certified nursing homes.
 - Shipments are meant to supplement existing efforts to provide equipment to nursing homes.
- In support of the U.S. Department of Veterans Affairs, FEMA coordinated shipments of more than 8.1 million N95 respirator masks, 500,000 surgical masks, more than 3.3 million gloves, 595,360 face shields and 30,000 surgical gowns to facilities across the country.
- As of Aug. 9, the federal government has approximately **90,457** total ventilators available in the Strategic National Stockpile.
- To date, FEMA, HHS, and the Department of Homeland Security (DHS) Cybersecurity Infrastructure and Security Agency (CISA), along with other federal agencies, processed and distributed nearly 350 million cloth face coverings.
 - Nearly 150 million of those went to critical infrastructure workers, others went to State, Tribal, Territorial, Voluntary Organizations Active in Disasters (VOAD) partners/stakeholders and other government partners.

Testing

- As of Aug. 9, CDC, state, local public health labs and other laboratories have tested more than **65.7** million samples.
- As of Aug. 7, the FDA issued 207 individual **emergency use authorizations** for test kit manufacturers and laboratories, including **37** antibody tests and two antigen tests.
- As of July 31, all 41 original Community-Based Testing Sites have transitioned to state management (29) or have closed (12) in consultation with the states.
- As of Aug. 4, 398,300 samples were collected at federally supported **Community-Based Testing Sites**.
- HHS has established a public-private partnership with pharmacy and retail companies to accelerate testing.
 - As of Aug. 9, under the CBTS public-private partnership, there are currently **761** live sites in 48 states and Washington, D.C. conducting testing.
 - **1.4** million samples were processed at public-private partnership testing sites.

Federal Funding

- As of Aug. 7, FEMA and HHS (combined) obligated **\$153.5** billion in support of COVID-19 efforts.
- As of Aug. 3, all 50 states, five territories, the Seminole Tribe of Florida and Washington, D.C. were approved for major disaster declarations to assist with additional needs identified.
 - As of Aug. 3, there are 88 tribes working directly with FEMA. One tribe, the Seminole Tribe of Florida (STOF) is, a direct recipient with a major disaster and an emergency declaration, 44 tribes that are direct recipients with emergency declarations and 44 tribes that are recipients under state declarations.
 - A tribal government may choose to be a subrecipient under a state that has chosen to be a recipient of FEMA assistance, or choose to be a direct recipient of FEMA.

- As of Aug. 7, FEMA obligated **\$8.9** billion in support of COVID-19 efforts. This support includes:
 - Emergency Food and Shelter: \$200 million
 - Temporary Medical Facilities including medical personnel, mortuary and ambulance services: \$2.3 billion
 - PPE including medical supplies and pharmaceuticals: \$2.8 billion
 - National Guard: \$1.7 billion
 - Public Assistance Emergency Protective Measures (Non-PPE): **\$1.6** billion
 - Commodities: \$27.3 million
 - Crisis Counseling: **\$59.7** million

Additional Federal Support

- As of Aug. 10, FEMA has **2,084** employees supporting COVID-19 pandemic response out of a total 20,831 agency employees ready to respond to other emergencies should they occur.
- To date, the President has approved 49 National Guard personnel in a Title 32 duty status through Dec. 31.
- As of Aug. 10, **21,026** National Guard troops have activated in T-32 duty status and **324** troops have activated in State Active Duty status to help with testing and other response efforts.
- As of Aug. 6, 6,395 CDC personnel supporting the outbreak response.
- As of Aug. 7, HHS has **482** personnel supporting the outbreak response.
- As of Aug. 10, **99** agencies across **30** states, the District of Columbia, three tribes and one U.S. territory have used FEMA's Integrated Public Alert and Warning System (IPAWS) to send a total of **384** alerts containing information on COVID-19 to cell phones and other wireless devices via the Wireless Emergency Alert system, and 84 alerts to radios/televisions via Emergency Alert System.

COVID-19 Update

Situation: Upward trajectory in COVID-19 case count continues across 6 (+3) states, with 1 (-3) states in a plateau status, and 49 states on a downward trajectory. **25,931** (-142) Federal employees deployed / activated; **2,084** (-7) FEMA employees deployed.

Nationwide Testing: **65,756,307** (+835,387) cumulative as of **Aug 10**

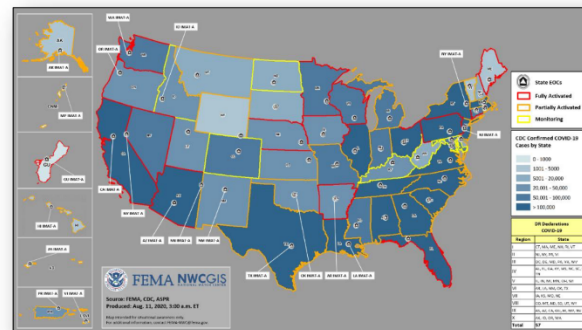
COVID-19 positive cases continue to increase globally (CDC COVID-19 update as of Aug 9)

Confirmed Cases of COVID-19

- United States: **5,023,649** (+165,053)
- Worldwide: **19,462,112** (+273,552)
- Deaths caused by COVID-19
 - United States: **161,842** (+2,653)
 - Worldwide: **722,285** (+6,207)

Response:

- NRCC at Level I
- Regions I, II, III, V, VI, & X RRCCs at Level III
- Regions IV, VII, VIII, & IX RRCCs are rostered
- Regions VII, VIII & IX COVID-19 response being worked from the Virtual JFO
- NWC, all RWCs, and MOCs are monitoring



(COVID-19 SLB, Aug 10)

State Data

<https://covid19.ca.gov/>
<https://update.covid19.ca.gov/#top>
<https://www.cdph.ca.gov/Programs/CID/DCDC/Pages/Immunization/ncov2019.aspx#>

Statewide industry guidance to reduce risk

<https://covid19.ca.gov/industry-guidance/#top>
<https://www.cdph.ca.gov/Programs/CID/DCDC/Pages/Guidance.aspx>

Open sectors in counties with variance

<https://covid19.ca.gov/roadmap-counties/#track-data>
<https://covid19.ca.gov/roadmap-counties/>

Data models

<https://covid19.ca.gov/data-and-tools/>

CDPH News Releases 2020

<https://www.cdph.ca.gov/Programs/OPA/Pages/New-Release-2020.aspx>

[State Officials Announce Latest COVID-19 Facts](#)

August 10, 2020 - The California Department of Public Health today announced the most recent statistics on COVID-19.

[State Officials Announce Latest COVID-19 Facts](#)

August 9, 2020 - The California Department of Public Health today announced the most recent statistics on COVID-19.

[State Officials Announce Latest COVID-19 Facts](#)

August 8, 2020 - The California Department of Public Health today announced the most recent statistics on COVID-19.

[State Officials Announce Latest COVID-19 Facts](#)

August 7, 2020 - The California Department of Public Health today announced the most recent statistics on COVID-19.

[California Public Health Officials Release Guidance on Higher Education](#)

August 7, 2020 - The California Department of Public Health today released statewide interim guidance for institutions of higher education (IHE).

[State Officials Announce Latest COVID-19 Facts](#)

August 6, 2020 - The California Department of Public Health today announced the most recent statistics on COVID-19.

[State Officials Announce Latest COVID-19 Facts](#)

August 5, 2020 - The California Department of Public Health today announced the most recent statistics on COVID-19.

California COVID-19 By The Numbers

August 10, 2020

Numbers as of August 9, 2020

CALIFORNIA COVID-19 SPREAD

561,911 (+7,751)

TOTAL CASES

Ages of Confirmed Cases

- 0-17: 53,136
- 18-49: 339,235
- 50-64: 107,300
- 65+: 61,464
- Unknown/Missing: 776

Gender of Confirmed Cases

- Female: 281,543
- Male: 274,192
- Unknown/Missing: 6,176

10,359 (+66)

Fatalities

Hospitalizations

Confirmed COVID-19
5,596/1,727
Hospitalized/in ICU

Suspected COVID-19
1,174/152
Hospitalized/in ICU

For county-level
hospital data:
bit.ly/hospitalsca

Your actions save lives.

For county-level data:
data.chhs.ca.gov
covid19.ca.gov



Riverside County Data

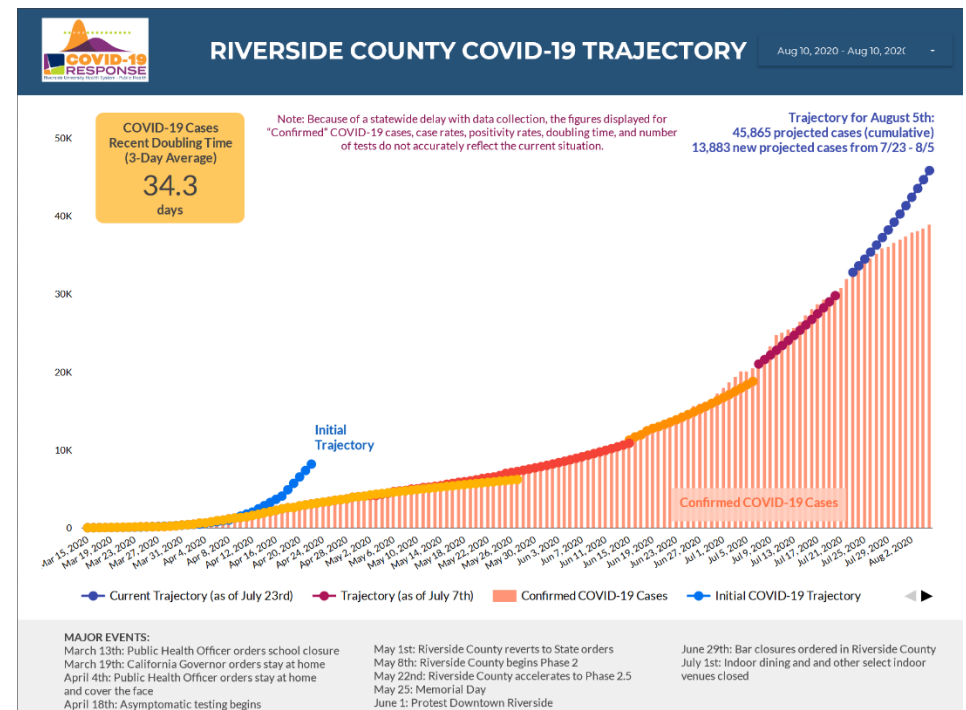
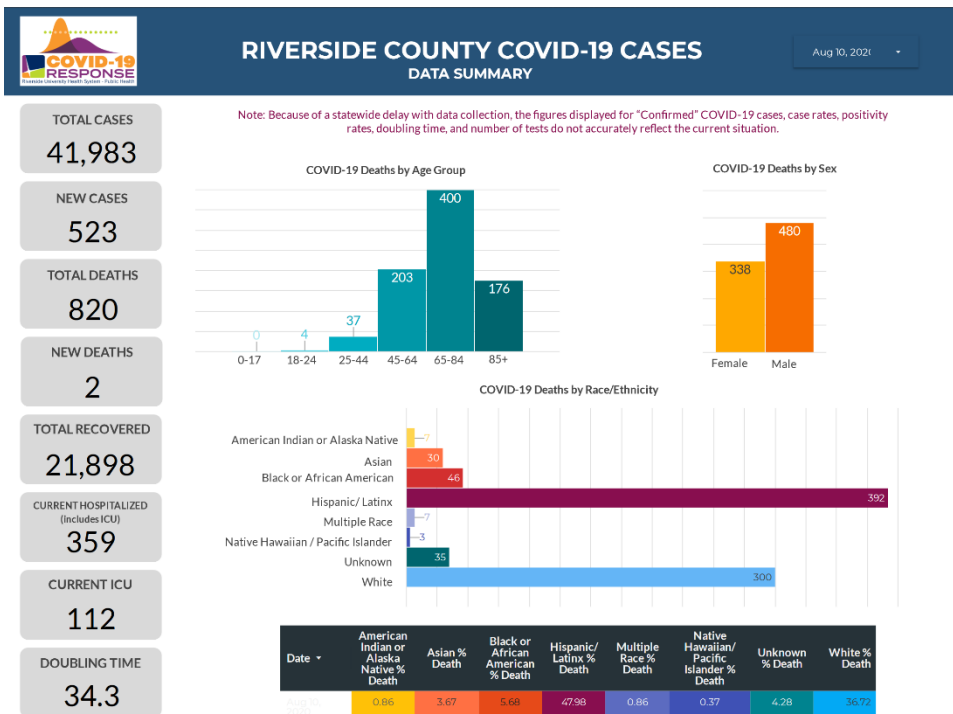
<https://www.rivcoph.org/coronavirus>

RUHS Public Health News:

- Public health officer issues statement on school waiver process [English](#) / [Spanish](#) / [School Waivers Info](#) - August 5, 2020
- **RUHS Public Health:** Youth sports may resume with social distancing [English](#) / [Spanish](#) - August 5, 2020
- **RUHS Public Health:** [Updated Advisory for the Operation of Youth Sports](#) - August 5, 2020
- Board of Supervisors vote 5-0 to declare racism as a public health crisis [English](#) / [Spanish](#) - Aug 4, 2020
- **RUHS Public Health:** [\\$2 Million Approved to Launch Youth Community Corps](#) - August 4, 2020
- **RUHS Public Health:** [State fixing technical issue causing lag in case reporting](#) - August 3, 2020
- **RUHS Public Health:** [Health officials warn about impact of smoke from Apple Fire](#) - August 3, 2020

Daily Epidemiology Summary updated 8-10-2020

https://rivcoph.org/Portals/0/Documents/CoronaVirus/August/Dashboard/Public%20Daily_COVID-19_Updates%2008.10.20.pdf?ver=2020-08-10-155018-937×tamp=1597099914818



Weather

The forecast remains on track for a big warm up by the end of this week with temperatures near ten degrees above average for most areas. In the meantime, we will have quiet weather for the next couple of days with temperatures near average.

COVID-19 Weather Support

Issued:

1100 AM August 11 2020

**NATIONAL WEATHER SERVICE
SAN DIEGO, CA**

IMPACT SCALE

None Minor Moderate High Extreme

Resources

- <https://www.weather.gov/spot/>
- <https://inws.ncep.noaa.gov>
- <https://www.wrh.noaa.gov/sqx/event/dsstable.php>

(858) 675 - 8705
(24/7, Restricted)

Weather.gov/SanDiego

7-day Forecast for Counties in far Southwest CA

Period Aug 11 - Aug 18 (24-hr)	Orange	SW San Bernardino	All Deserts	Western Riverside	San Diego
Today	None	None	Warm	None	None
Wednesday	None	None	Warm	None	None
Thursday	None	Warm	Warm	Warm	None
Friday	Hot Inland	Very Hot	Hot	Very Hot	Hot Inland
Saturday	Hot Inland	Very Hot	Very Hot	Very Hot	Hot Inland
Sunday	Hot Inland	Very Hot	Very Hot	Very Hot	Hot Inland
Monday	Warm Inland	Very Hot	Very Hot	Very Hot	Warm Inland
Tuesday	Warm	Very Warm	Hot	Very Warm	Warm

Forecast Discussion

A warming trend will continue today, with each day getting warmer through the weekend. Temperatures are expected to be around 15 degrees above average Saturday and Sunday, with the hottest locations in the Inland Empire and deserts. An Excessive Heat Watch will be in effect from Friday through Monday for all locations below 5000 ft except the coast.

Latest hazard threat table: <https://www.wrh.noaa.gov/sqx/event/dsstable.php>

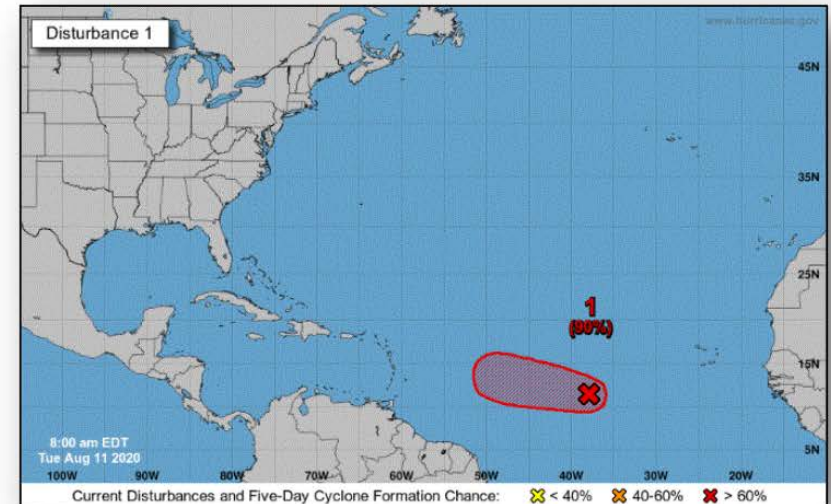
<https://www.weather.gov/forecastpoints#>

Tropical Outlook – Atlantic



Disturbance 1 *(as of 8:00 a.m. ET)*

- 800 miles WSW of the Cabo Verde Islands
- Moving W to WNW at 15 mph
- Tropical depression is likely to form during the next day or so
- Conditions are forecast to become less conducive for development by the end of the week
- Formation chance through 48 hours: **High (90%)**
- Formation chance through 5 days: **High (90%)**

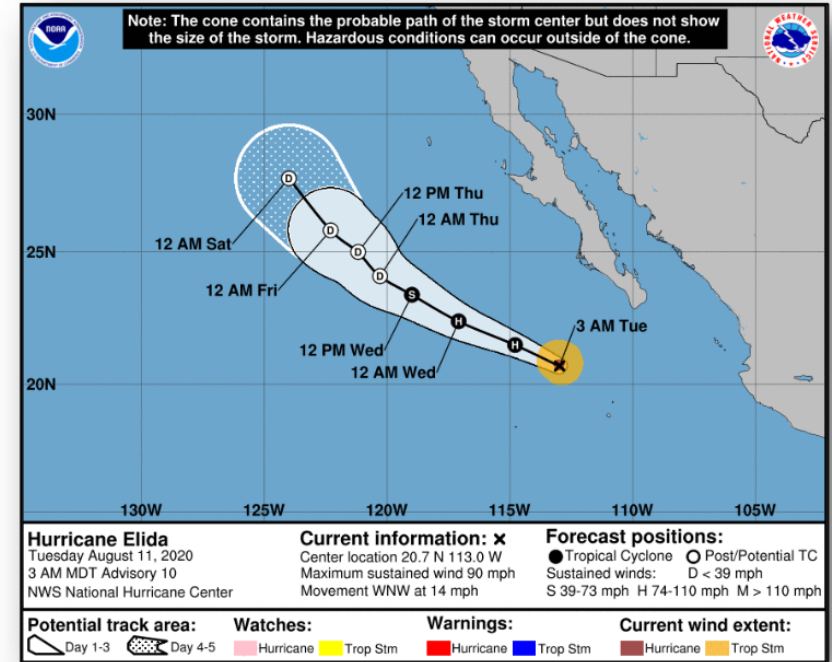


Tropical Outlook – Eastern Pacific



Tropical Cyclone Elida (CAT 1) (Advisory #10 as of 5:00 a.m. ET)

- 250 miles SW of the southern tip of Baja California, Mexico
- Moving WNW at 14 mph
- Maximum sustained winds 90 mph
- Weakening is likely to begin by late afternoon and continue into Thursday
- Hurricane force winds extend 15 miles; tropical storm force winds extend 70 miles



Tropical Outlook – Eastern Pacific



Disturbance 1 (as of 8:00 a.m. ET)

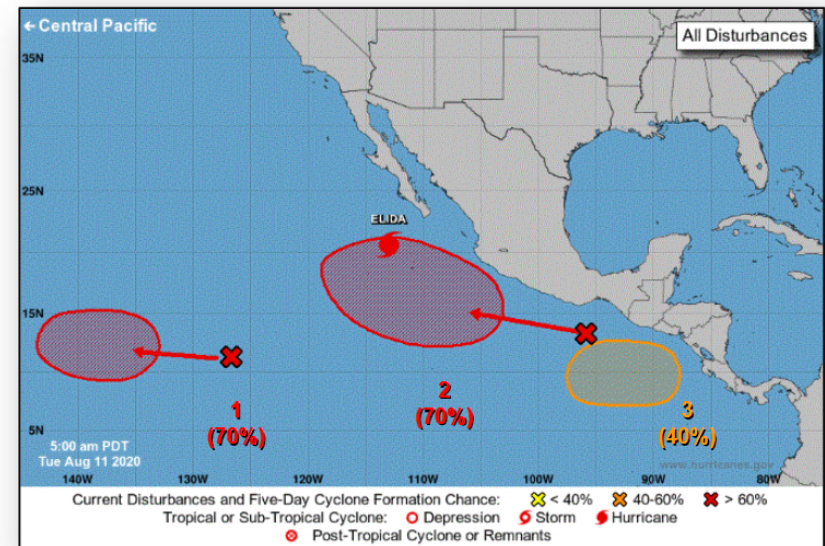
- 1,500 miles SW of the southern tip of the Baja California peninsula, Mexico
- Expected to move slowly west
- Tropical depression is likely to form late this week
- Formation chance through 48 hours: Low (30%)
- Formation chance through 5 days: High (70%)

Disturbance 12 (as of 8:00 a.m. ET)

- Forecast to develop well south or southwest of the southwestern coast of Mexico in a couple of days
- Moving WNW
- Likely to become a tropical depression by late this week or over the weekend
- Formation chance through 48 hours: Low (10%)
- Formation chance through 5 days: High (70%)

Disturbance 3 (as of 8:00 a.m. ET)

- Expected to form in a few days over the far eastern portion of the basin to the south of the coast of Central America
- Moving WNW
- Tropical depression could form this weekend
- Formation chance through 48 hours: Low (near 0%)
- Formation chance through 5 days: Medium (40%)



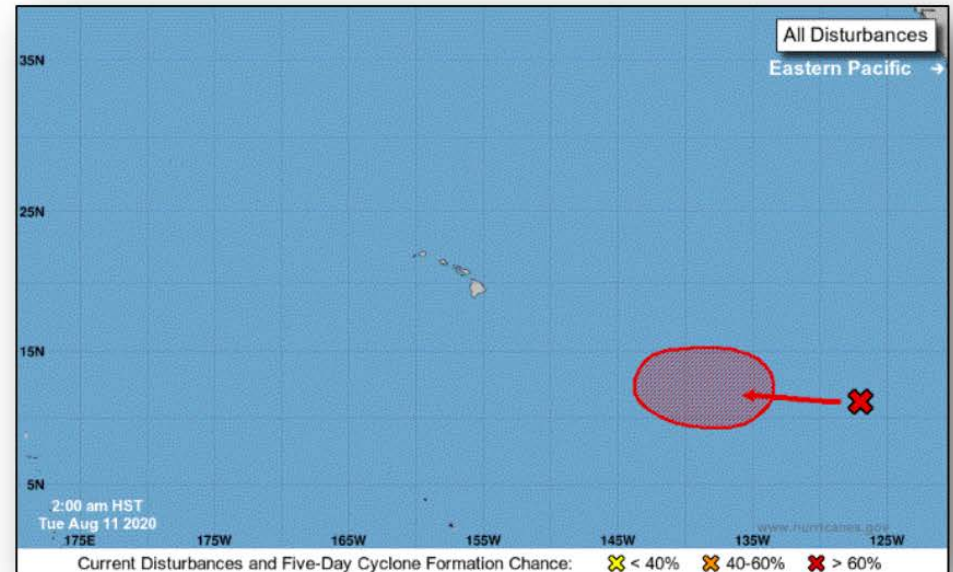
Tropical Outlook – Central Pacific



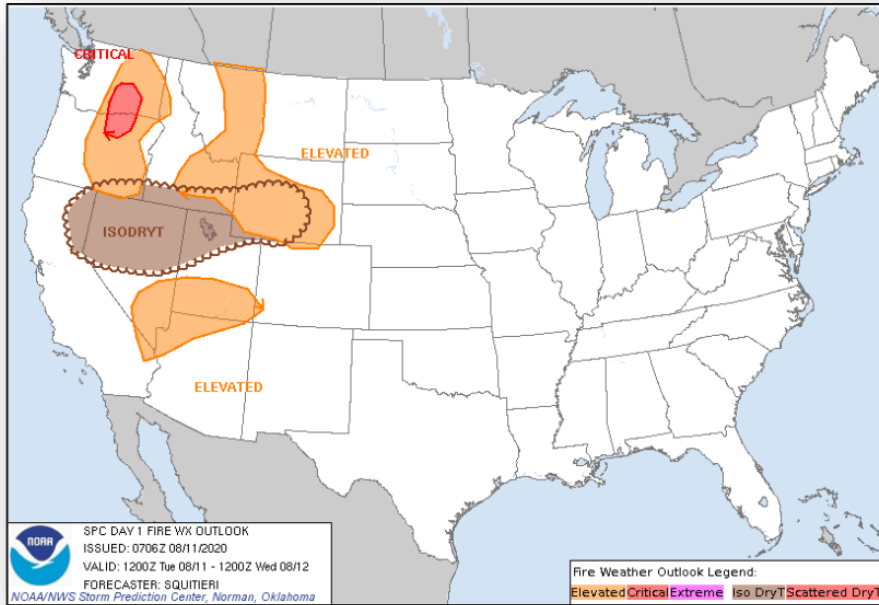
FEMA

Disturbance 1 (as of 8:00 a.m. ET)

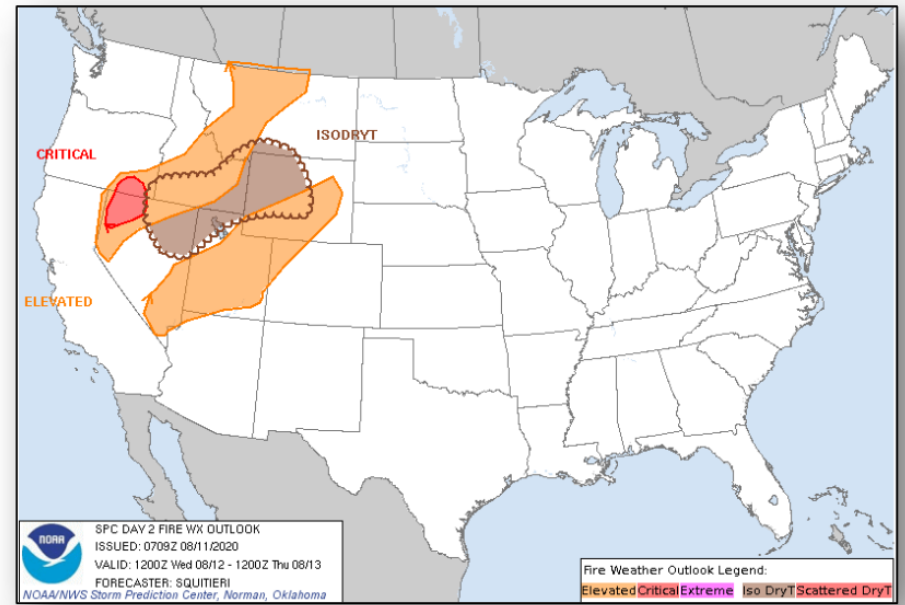
- See Disturbance 1 in the Eastern Pacific Basin



Fire Weather Outlook



Today

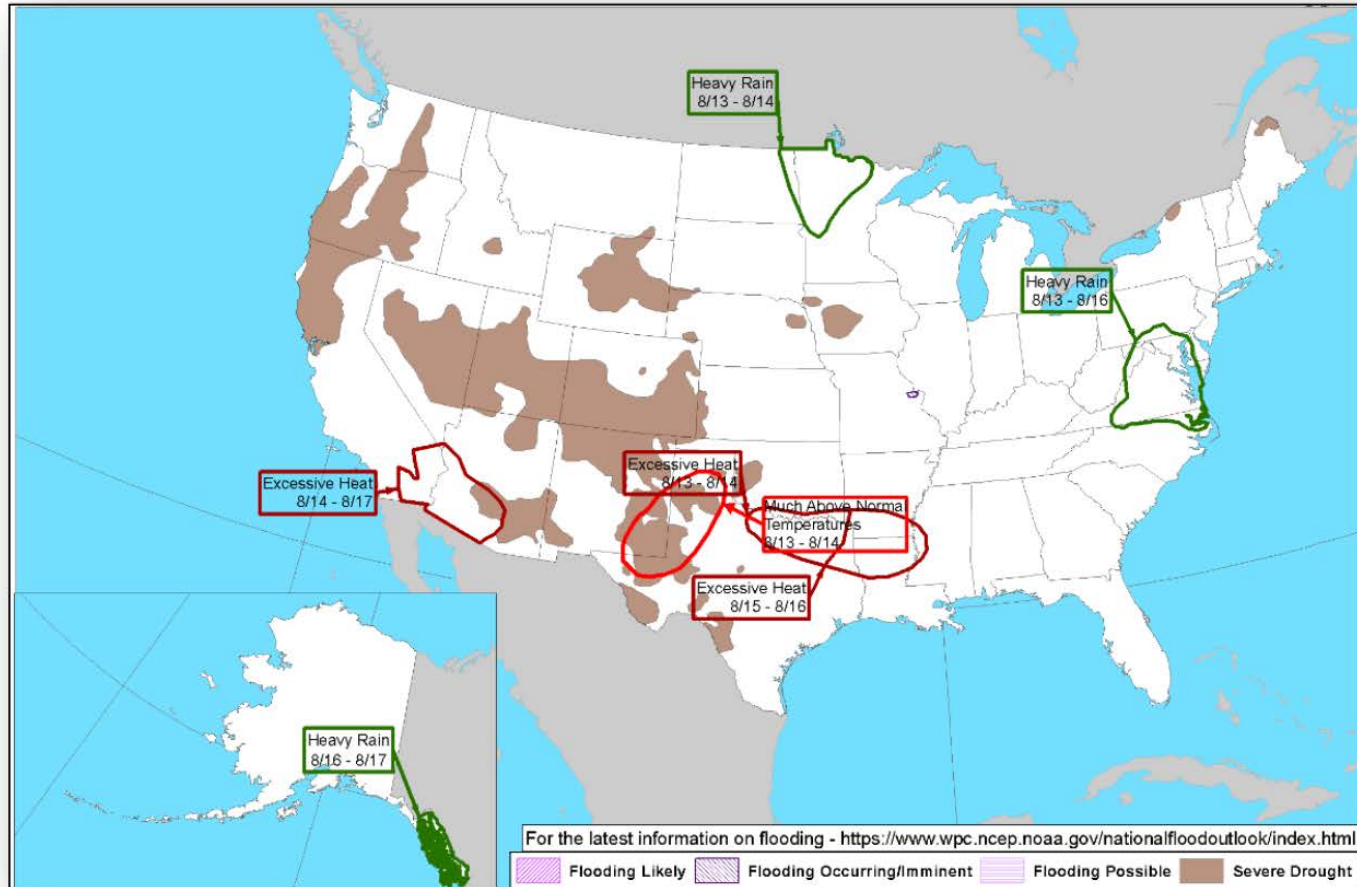


Tomorrow

Hazards Outlook – Aug 13-17



FEMA



Earthquake Forecast

Earthquake Forecast for the Salton Sea Swarm of August 2020

- A swarm of earthquakes beneath the Salton Sea began on August 10, 2020.
- The largest earthquake that has occurred, as of this release, is a magnitude 4.6 at 8:56 AM PDT on August 10. This earthquake and the associated swarm are located approximately 8 miles from the southern end of the San Andreas Fault. This area has also seen swarms in the past – most recently, in 2001, 2009, and 2016. Past swarms have remained active for 1 to 20 days, with an average duration of about a week.
- During this earthquake swarm, the probability of larger earthquakes in this region is significantly greater than usual. The southernmost section of the San Andreas Fault is capable of rupturing in large magnitude earthquakes (magnitude 7+), but the last earthquake that strong was more than 300 years ago. In a typical week, there is approximately a 1 in 10,000 chance of a magnitude 7+ earthquake on the southernmost San Andreas Fault. That probability is significantly elevated while swarm activity remains high.
- The following three scenarios describe possibilities of what could happen from 10 August to 18 August.

Only one of these scenarios will occur within the next week. These scenarios include the possibility of earthquakes on and off the San Andreas Fault.

1. **Scenario One (Most likely, about 80% chance):** Earthquakes continue but none will be larger than magnitude 5.4 within the next 7 days.

The most likely scenario is that the rate of earthquakes in the swarm will decrease over the next 7 days. Some moderately sized earthquakes may occur (magnitude in the range M4.5-M5.4), which could cause localized damage, particularly in weak structures. Smaller magnitude earthquakes (M3.0+) may be felt by people close to the epicenters.

2. **Scenario Two (Less likely, about 19% chance):** A larger earthquake (magnitude 5.5 to 6.9) could occur within the next 7 days. A less likely scenario is a somewhat larger earthquake (up to a M6.9). Earthquakes of this size could cause damage around the Salton Sea area and would be followed by aftershocks that would increase the number of smaller earthquakes per day.

3. **Scenario Three (Least Likely, approximately 1% chance):** A much larger earthquake (magnitude 7 or higher) could occur within the next 7 days.

A much less likely scenario, compared with the previous two scenarios, is that the ongoing swarm could trigger an earthquake significantly larger than the M4.6 that occurred on the 10 August (i.e., M7.0 and above). While this is a very small probability, if such an earthquake were to occur, it would have serious impacts on communities nearby and would be followed by aftershocks that would increase the number of smaller earthquakes per day.

https://www.usgs.gov/center-news/earthquake-forecast-salton-sea-swarm-august-2020?fbclid=IwAR0bh3XS4W14ckDzrl6kSy9kbcUNWxRUTGpy_yPRdkrOKaE2WJoZi5Jrqqo

Map showing the Bombay Beach swarm of August 2020 (as of August 10, 2020). (Public domain.)

