



**\*\*Extraordinary Assumptions:** There are a lot of different data sources in this report not all of them match but aid to provide an overall picture of the current situation. COVID-19 Data Source Comparison - [https://covid-19.splunkforgood.com/covid\\_19\\_datasource\\_comparison](https://covid-19.splunkforgood.com/covid_19_datasource_comparison)

# Daily Situation Summary

## Friday, July 24, 2020

### As of 10:00 AM

#### COVID-19 by the Numbers

07/24/2020	Riverside	Imperial	Kern	Los Angeles	Orange	San Bernardino	San Diego	San Luis Obispo	Sana Barbra	Ventura	California	United States	Global
Total Cases	33,093	7,533	13,513	165,242	32,047	26,820	25,109	1,373	5,508	6,223	425,616	3,952,273	15,257,287
New Cases	862	75	1,515	3,037	691	1,497	587	35	86	92	12,040	70,106	244,556
Cases Per Capita	1,389	4,180	1,530	1,636	1,013	1,256	760	488	1,241	734	1,087	1,198	199
Recovered	<a href="#">11,514</a>	<a href="#">7,758</a>	<a href="#">5,084</a>	<a href="#">Not Reported</a>	<a href="#">17,091</a>	<a href="#">16,981</a>	<a href="#">17,890</a>	<a href="#">978</a>	<a href="#">5,051</a>	<a href="#">3,360</a>	<a href="#">131,176</a>	<a href="#">1,980,432</a>	<a href="#">9,585,715</a>
Total Deaths	617	165	115	4,213	521	337	505	7	32	63	8,027	142,755	628,240
New Deaths	28	2	10	59	8	4	18	0	0	1	157	1,078	9,090
Deaths Per Capita	25.89	91.56	13.02	41.72	16.47	15.78	15.29	2.49	7.21	7.43	20.50	43.26	8.20
Presumptive active cases	20,962	-390	8,314		14,435	9,502	6,714	388	425	2,800	286,413	1,829,086	5,043,332
% of State's Cases	7.78%	1.77%	3.17%	38.82%	7.53%	6.30%	5.90%	0.32%	1.29%	1.46%	<b>10.77%</b>	<b>25.90%</b>	
Currently in Hospitals	673	78	273	2,470	751	688	433	17	92	78	8,337		
Total Hospital Beds	4,061	261	1,251	16,107	4,940	3,268	4,897	458	333	261	56,140		
Currently in ICU	155	21	57	556	233	197	128	4	26	155	1,978		
ICU Beds Available	66	3	17	827	465	185	222	21	9	66	1,943		
Case Fatality Rate	1.9%	2.2%	0.9%	2.5%	1.6%	1.3%	2.0%	0.5%	0.6%	1.0%	1.9%	3.6%	4.1%
Population*	2,383,286	180,216	883,053	10,098,052	3,164,182	2,135,413	3,302,833	281,455	443,738	848,112	39,148,760	<b>329,981,711</b>	<b>7,665,345,000</b>
% of Population	6.09%	0.46%	2.26%	25.79%	8.08%	5.45%	8.44%	0.72%	1.13%	2.17%	<b>0.13%</b>	<b>0.0516%</b>	

Sources: CDPH, WHO, CDC

The date for which case statistics and hospital data were reported. Hospital COVID data are self-reported through a portal managed by the California Hospital Association and pulled at 2pm. COVID case statistics are reported by local health departments to CalREDIE and are pulled at 2pm. Hospital data and case statistics are integrated by the California Department of Technology and made available through the Open Data Portal the following morning. CA Open Data Portal is at least 24 Hours behind

\*California-Demographics.com is made by Cubit - a demographic data provider & census.gov

Presumptive active cases - A calculation of total casses - Recovered - Dead

#### Global Data

More detail on page 2

#### Information

More detail on page 10

#### State Data

More detail on page 15

#### Weather

More detail on page 23

#### News

More detail on page 5

#### US Data

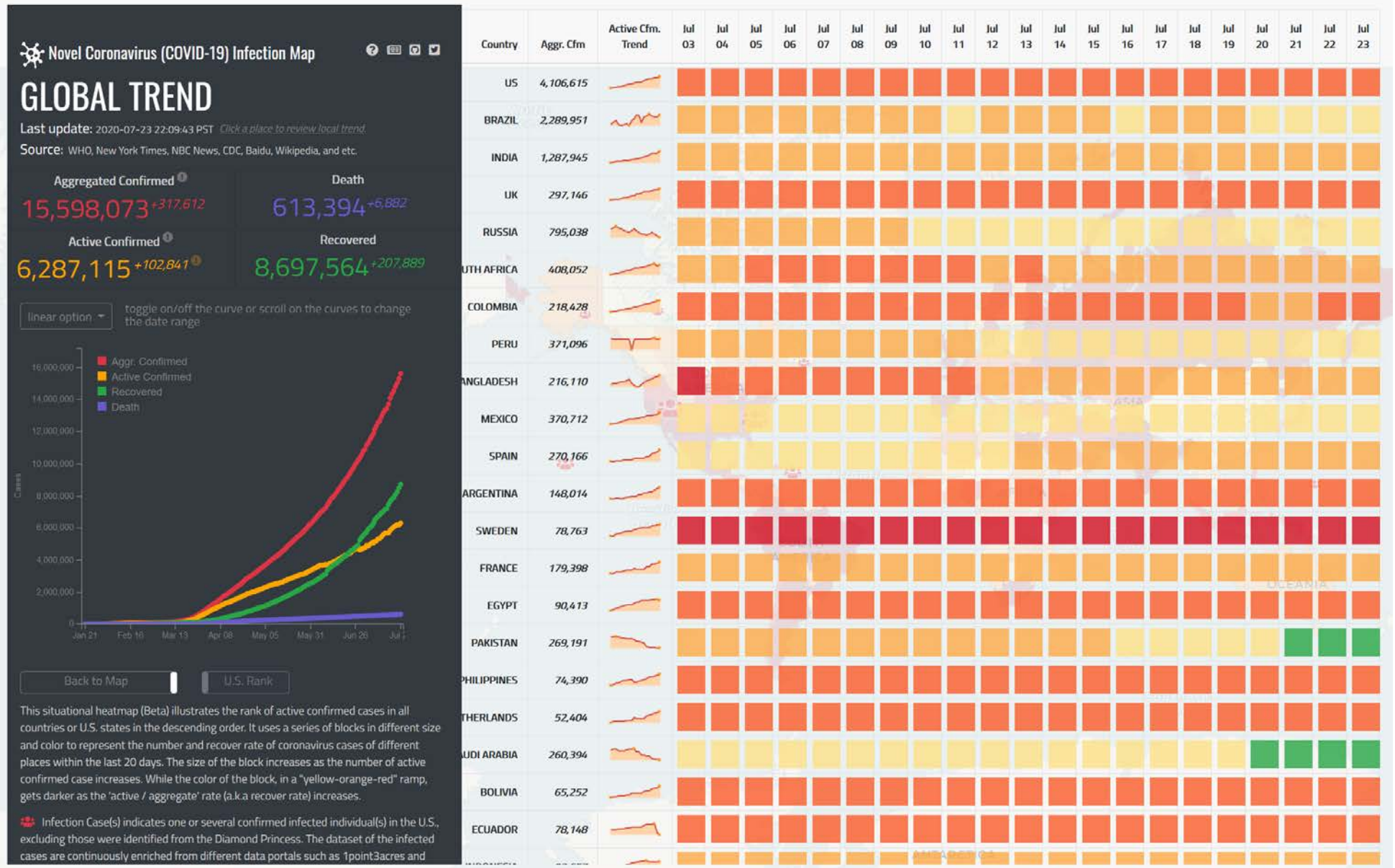
More detail on page 11

#### Riverside County Data

More detail on page 16

# Global Data

<https://hgis.uw.edu/virus/>



# Government COVID-19 Policy Actions Table

as of 23 July, 2020



- Overview
- Analyze Trends
- View Data Table
- Government Actions**

- Select View:
- Timeline
  - Table**

Country	Closure of Businesses and ..	Curfews	Internal travel restrictions	International travel restrictio..	Limit public gatherings	Lockdown	Schools closure	State of emergency decl..
Afghanistan			■	■	■	■	■	■
Albania	■	■	■	■	■	■	■	■
Algeria	■	■	■	■	■	■	■	■
Angola	■	■	■	■	■	■	■	■
Antigua and Barbuda	■	■		■	■	■	■	■
Argentina	■		■	■	■	■	■	■
Armenia	■		■	■	■	■	■	■
Australia	■		■	■	■	■	■	■
Austria	■	■	■	■	■	■	■	■
Azerbaijan	■		■	■	■	■	■	■
Bahamas	■			■	■	■	■	■
Bahrain	■	■		■			■	■
Bangladesh	■	■	■	■	■	■	■	■
Barbados	■	■	■	■	■	■	■	■
Belarus			■	■	■		■	■
Belgium	■		■	■	■	■	■	■
Belize	■	■	■	■	■	■	■	■
Benin	■		■	■	■		■	■
Bhutan		■	■	■	■	■	■	■
Bolivia	■	■	■	■	■	■	■	■
Bosnia and Herzegovina	■	■	■	■	■		■	■
Botswana	■	■	■	■	■	■	■	■

Select Country

Select Action Category

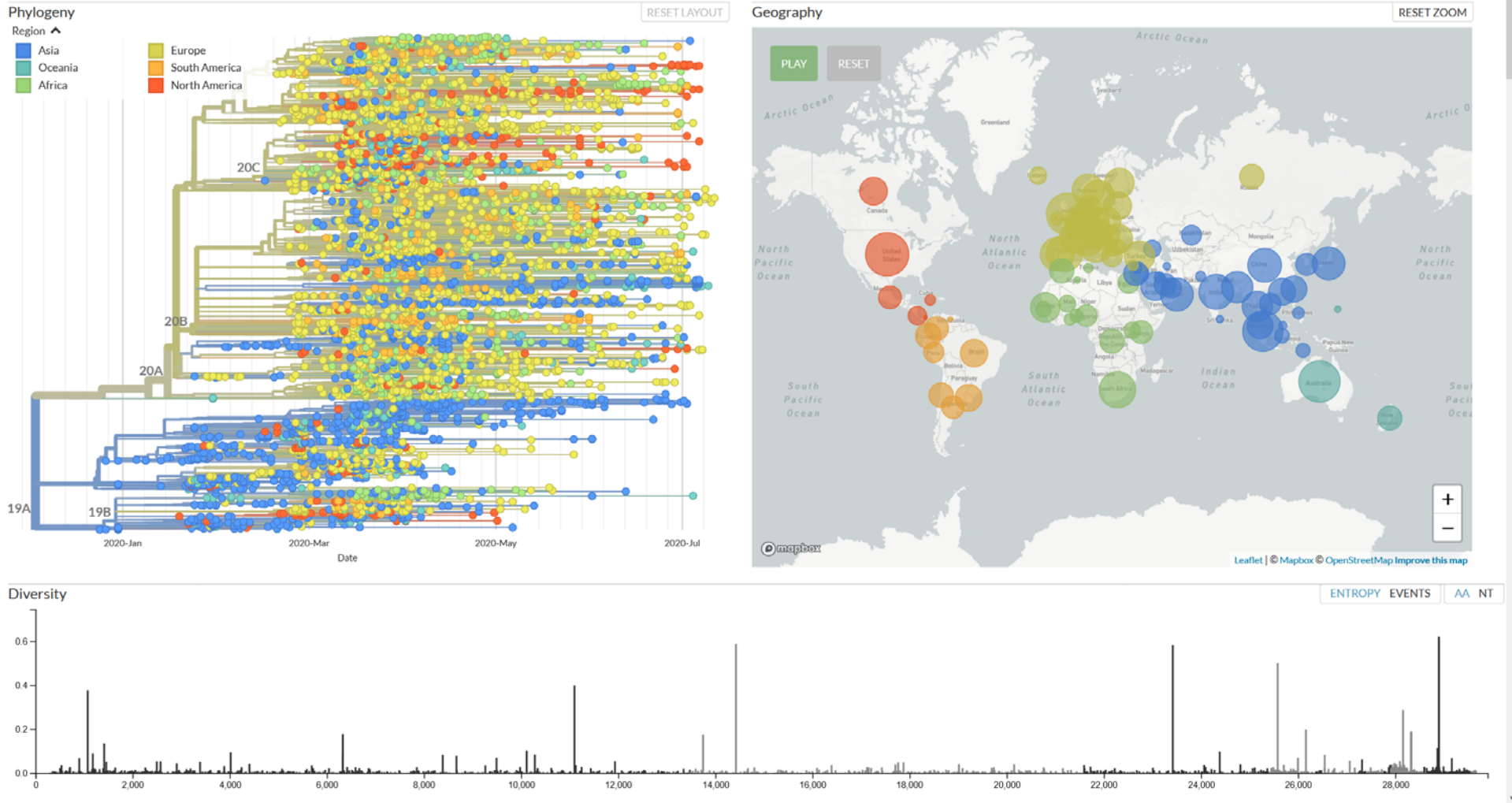
Sources: Confirmed cases and deaths data are from the Johns Hopkins (JHU) Coronavirus Resource Center (last updated with data from 7/23/2020). Government action data are from ACAPS, COVID-19 Government Measures Dataset, 2020 (last updated with data from 7/9/20).

Notes: Government actions as reported by ACAPS have been adjusted as follows: Internal Travel Restrictions includes "Checkpoints within the country" and "Domestic travel restrictions"; International Travel Restrictions includes "Border checks," "Border closure," "Complete border closure," "Health screenings in airports and border crossings," "International flights suspension," and "Visa restrictions"; and Lockdowns includes "Partial lockdown" and "Full lockdown". Government actions by the United States are based on federal actions and do not include actions taken by individual states; for more information on state actions, see [here](#).

# Genomic epidemiology of novel coronavirus - Global subsampling

Maintained by the [Nextstrain team](#). Enabled by data from [GISAID](#)

Showing 3877 of 3877 genomes sampled between Dec 2019 and Jul 2020.



<https://www.cnn.com/world/live-news/coronavirus-pandemic-07-23-20-intl/index.html>

## News

### China orders closure of US consulate in Chengdu

- China has ordered the United States to close its consulate in the southwestern city of Chengdu, retaliating against Washington's move earlier this week to shut down the Chinese consulate in the city of Houston.
- The Chinese foreign ministry said on Friday the Chengdu mission's closure was a "legitimate and necessary response to the unreasonable measures by the United States".
- "The current situation in China-US relations is not what China desires to see," it said in a statement, adding that "the US is responsible for all this".
- "We once again urge the United States to immediately retract its wrong decision and create necessary conditions for bringing the bilateral relationship back on track."
- The tit-for-tat moves come amid a dramatic escalation in tensions between the world's two biggest economies. On Tuesday, Washington gave Beijing 72 hours to close its mission in Houston, Texas, alleging the theft of intellectual property and espionage - a claim the Chinese side called "malicious slander".

<https://www.aljazeera.com/news/2020/07/china-orders-closure-consulate-chengdu-200724041725897.html>

RELATED

### US accuses Chinese hackers in targeting of COVID-19 research

<https://apnews.com/7aa7a893d0dc15da21a5920ab7d9f221>

### US orders China to close its consulate in Houston

<https://apnews.com/ffc84d09363ba0a1a0e6db3c05bb8322>

### Mexico reports at least 8,400 new coronavirus cases in 24 hours, the highest number yet

- Mexico has one of the world's highest coronavirus death tolls. Is the country's unorthodox strategy to blame?
- It has 10 percent of the world's population, but in recent weeks has accounted for nearly half the global daily death toll. And Mexico is one of its worst-hit countries, with a death toll that has now surpassed Italy and Spain.
- About one in five of its inhabitants live in the capital, Mexico City - a beehive perfect for any virus looking to spread. Despite that, many question whether its rise here was so inevitable, or if the region's second-most populous country simply got it wrong.
- From the start, there have been questions: Why did Mexico test at one of the lowest rates in the world? Why was the quarantine so softly policed? And why did the country's president flout his own government's physical distancing guidelines?
- Al Jazeera heads to the front lines with paramedics and medical staff at a public hospital's intensive care unit, and with stallholders in a mega-market that has become a COVID focal point. We also visit the food banks, where the country's poorest come for help as they try to deal with the economic fallout of the pandemic.

<https://www.aljazeera.com/programmes/specialseries/2020/07/frontline-mexico-fight-covid-19-200723100729057.html>

## **Red Cross warns coronavirus crisis could prompt "massive" new migration**

- The head of the Red Cross has warned in an interview with the AFP news agency that the economic damage caused by the coronavirus pandemic could lead to huge new waves of migration.
- Jagan Chapagain, head of the International Federation of Red Cross and Red Crescent Societies (IFRC), said many people in poverty faced the desperate choice of risking exposure to the virus or going hungry.
- "Increasingly we are seeing in many countries the impacts on the livelihoods and the food situation," he said in Geneva late Wednesday.
- "What we hear is that many people who are losing livelihoods, once the borders start opening, will feel compelled to move," he said. "We should not be surprised if there is a massive impact on migration in the coming months and years."

[https://www.cnn.com/world/live-news/coronavirus-pandemic-07-24-20-intl/h\\_79896c8cddb5b021fb222953305645a1](https://www.cnn.com/world/live-news/coronavirus-pandemic-07-24-20-intl/h_79896c8cddb5b021fb222953305645a1)

## **More than 300,000 Americans could die if Covid-19 trajectory doesn't change, former FDA head says**

- Former US Food and Drug Administrator Dr. Scott Gottlieb said the US could see upwards of 300,000 deaths from Covid-19 if the country doesn't change its trajectory.
- "In the United States, probably, you know, by the end of the year, we could have upwards of 300,000 if we continue on the current trajectory. Right now, we have close to a thousand casualties a day, so if we don't change that trajectory, you could do the math and see where we are at towards the end of the year," Gottlieb said Wednesday during an interview on CNBC's Squawk Box.
- Gottlieb explained that while in-hospital mortality from the virus has declined, "the problem is we're hospitalizing a lot of patients."

[https://www.cnn.com/world/live-news/coronavirus-pandemic-07-24-20-intl/h\\_168b0c6beadba6122a635165eb70a272](https://www.cnn.com/world/live-news/coronavirus-pandemic-07-24-20-intl/h_168b0c6beadba6122a635165eb70a272)

### RELATED

## **Dr. Birx says this Covid-19 metric "is a real indicator that something is happening"**

- Officials better understand now that test positivity "is a real indicator that something is happening" even before there is a significant surge in Covid-19 cases, Dr. Deborah Birx, the White House coronavirus task force coordinator, said Friday.
- The positivity rate is the percentage of people who test positive for the virus of those overall who have been tested.
- "I think what's really important is to understand when you first see that increase in test positivity ... And I think we have a lot more knowledge now that when it just ticks up a little, even before you see a significant increase in cases, that that is a real indicator that something is happening," she said on the "Today" Show this morning.
- As an example, Birx mentioned the surge in cases observed after Memorial Day weekend, and thanked younger people for getting tested even if they had no symptoms.
- "So much of that early spread in 20- to 30-year-olds is asymptomatic. They would never appear at an emergency room or a testing site. They would have no reason to do it ... We asked them after Memorial Day when we could see Americans on the move, that if they were in large gatherings, no matter if it was in the street or in a bar or in a private home, to go and get tested. And I think it's because of their responsibility, we [were] able to see that original tick up," Birx explained.
- "Until you can see that explosion, it's hard for people to understand how deeply you have to clamp down. And that's why we called out the next set of cities where we see early warning signs. Because if you make changes now, you won't become a Phoenix," she added.

[https://www.cnn.com/world/live-news/coronavirus-pandemic-07-24-20-intl/h\\_914246449aa738bd415317625373e23e](https://www.cnn.com/world/live-news/coronavirus-pandemic-07-24-20-intl/h_914246449aa738bd415317625373e23e)

## **Trump Cancels GOP Convention In Florida, Citing Virus Concerns**

- President Donald Trump on Thursday said he has instructed his staff to cancel all components of the Republican National Convention scheduled next month in Jacksonville, Florida.
- Trump cited concerns about the recent "flare-up" in coronavirus cases as he made the announcement during his Thursday briefing from the White House.
- "It's a different world, and it will be for a little while," Trump said, explaining his decision. "To have a big convention is not the right time."
- Despite the virus, the president had previously pushed ahead with the convention despite warnings from public health officials. The bulk of the event was moved from North Carolina to Florida after Trump insisted he wanted a full convention with 19,000 attendees and no social distancing or face covering requirements.
- The Jacksonville events were scheduled to take place at the end of August.

<https://patch.com/us/white-house/livestream-president-trump-holds-thursday-coronavirus-briefing>

## **'It's Like Groundhog Day': Coronavirus Testing Labs Again Lack Key Supplies**

- Just weeks after resolving shortages in swabs, researchers are struggling to find the chemicals and plastic pieces they need to carry out coronavirus tests in the lab — leading to long waiting times.
- Labs across the country are facing backlogs in coronavirus testing thanks in part to a shortage of tiny pieces of tapered plastic.
- Researchers need these little disposables, called pipette tips, to quickly and precisely move liquid between vials as they process the tests.
- "That's the crazy part," said Dr. Alexander McAdam, director of the infectious diseases diagnostic laboratory at Boston Children's Hospital, one of many institutions seeking the prized pipette tips. "Whenever there's a shortage, it's lab versus lab, city versus city, state versus state, competing for supplies."
- "It's like Groundhog Day," said Scott Shone, director of the North Carolina State Laboratory of Public Health. "I feel like I lived this day four or five months ago."

<https://www.nytimes.com/2020/07/23/health/coronavirus-testing-supply-shortage.html?action=click&module=Top%20Stories&pgtype=Homepage>

## **This Texas county is under a stay-at-home order with curfew for 2 weeks**

- Starr County, Texas, has issued a shelter-at-home order for residents of the county, effective until 11:59 p.m. local time on August 10.
- The order went into effect this morning. It states that all residents must shelter at home, including those who live in hotels, motels and shared rentals.
- Residents are only allowed to leave their homes and travel for essential reasons.
- The order also highly encourages businesses that are not essential to stop all activities that may not be provided by curbside, drive-through or take-out services.
- The order, signed by County Judge Eloy Vera, also includes a mandatory curfew from 11:00 p.m. to 5:00 a.m. local time for anyone over the age of 18. There's a curfew from 10:00 p.m. to 6:00 a.m. local time for anyone 17 years old and under, unless accompanied by a parent or guardian.
- Starr County, along the US-Mexico border, includes Rio Grande City.

[https://www.cnn.com/world/live-news/coronavirus-pandemic-07-24-20-intl/h\\_6d657d6ba6a0ffa0f1edcfd628b1fcb5](https://www.cnn.com/world/live-news/coronavirus-pandemic-07-24-20-intl/h_6d657d6ba6a0ffa0f1edcfd628b1fcb5)

## **At least 55 Florida ICUs are out of beds**

- In Florida, at least 55 hospitals have reached ICU capacity and show zero ICU beds available, according to data released by the Agency for Health Care Administration (AHCA) early this morning.
- Ten of the hospitals at capacity are in Miami-Dade County, the epicenter of the pandemic in Florida, and six of them are in neighboring Broward County, AHCA data shows.
- Additionally, another 40 hospitals have 10% or less ICU capacity available, according to AHCA.
- AHCA reports about 16% ICU beds are available across the State of Florida.

[https://www.cnn.com/world/live-news/coronavirus-pandemic-07-24-20-intl/h\\_20a3d86df30bd0acd62d2acea6a9ab9b](https://www.cnn.com/world/live-news/coronavirus-pandemic-07-24-20-intl/h_20a3d86df30bd0acd62d2acea6a9ab9b)

Link to the data:

[https://bi.ahca.myflorida.com/t/ABICC/views/Public/ICUBedsHospital?%3AshowAppBanner=false&%3Adisplay\\_count=n&%3AshowVizHome=n&%3Aorigin=viz\\_share\\_link&%3AisGuestRedirectFromVizportal=y&%3Aembed=y%20%20%20%20%20%20###](https://bi.ahca.myflorida.com/t/ABICC/views/Public/ICUBedsHospital?%3AshowAppBanner=false&%3Adisplay_count=n&%3AshowVizHome=n&%3Aorigin=viz_share_link&%3AisGuestRedirectFromVizportal=y&%3Aembed=y%20%20%20%20%20%20###)

## **Atlanta Mayor, GA Governor, Ordered Into Mediation Over Masks**

- A Fulton County judge has ordered Gov. Brian Kemp and Atlanta Mayor Keisha Lance Bottoms into mediation before a hearing next week over a lawsuit by the governor.
- Kemp's office sued Lance Bottoms and Atlanta's city council last week over Atlanta's mandate to wear a mask , declaring it "void and unenforceable." Kemp and Bottoms had been prepared to meet in court Tuesday until two judges recused themselves from the proceedings.
- The order by Fulton County Superior Court Senior Judge Cynthia D. Wright ordered the parties to negotiate an agreement in good faith prior to a court hearing scheduled for July 28.
- Lance Bottoms said Wednesday night that she and Gov. Brian Kemp may yet "agree to disagree" and avoid a court fight over the city's mask mandate.

<https://patch.com/georgia/eastcobb/ga-governor-atlanta-mayor-may-dodge-court-fight-over-masks>

## **Who still needs the office? U.S. companies start cutting space**

- With the onset of the coronavirus epidemic, the company allows a large number of even the entire company to start working from home. Many American companies are reducing their real estate "footprint": reducing offices. And this is also one of the major methods that major companies are currently seeking to reduce costs. According to Reuters' analysis of quarterly earnings over the past week: More than 25 major companies plan to reduce the area of their offices in the next year, The related expenses of major companies in setting up offices are also the second largest expenses after salary expenses.
- Considering that even after the emergence of the coronavirus vaccine, a considerable portion of its employees will continue to work from home, financial services company State Street Corp said that it will double the number of employees assigned to the same office to reduce the use of more offices. Energy company Halliburton Co also stated that it intends to close more than 100 workplaces. Morgan Stanley also predicted in June that the policy of working from home will increase the vacancy rate of office buildings. In the next two to five years, the vacancy rate of New York office buildings will reach 10%-12% from the current 8.7%, while San Francisco will increase 5.8% to 7-9%.

<https://www.reuters.com/article/us-usa-results-realestate/who-still-needs-the-office-u-s-companies-start-cutting-space-idUSKCN24N2NL>



## **The coronavirus threatens auto industry recovery as cases rise and more employees miss work**

- Because of the high absenteeism rate in the automobile manufacturing industry, many companies are struggling to keep their factories running. Ford and Fiat Chrysler are hiring temporary workers, and General Motors is adjusting shifts at an assembly plant in Missouri. The high rate of employee absenteeism has also caused a series of problems in the production lines of automobile manufacturing plants in Michigan, Missouri, and Kentucky. These states are also experiencing a surge in new crown cases. Not only are employees diagnosed, many employees who cannot come to the factory to continue working, although they are in good health, but also need to self-isolate for 14 days due to contact with the confirmed persons, and cannot go to work at the factory. At present, American automakers, including Tesla, are trying to make factories work as normal as possible and address workers' concerns about the spread of the virus in factories and surrounding areas.

<https://www.cnn.com/2020/07/23/coronavirus-threatens-auto-industry-recovery-as-cases-rise-and-more-employees-miss-work.html>

## **Disney delays blockbuster films due to COVID-19 pandemic**

- US entertainment giant Walt Disney has postponed the release of major blockbuster films, citing the closure of theatres and production delays because of the coronavirus pandemic.
- The company on Thursday said the debut of its movie Mulan, scheduled on August 21 in the United States, was pushed back indefinitely. Disney also delayed the next film instalments from two of its biggest franchises, Avatar and Star Wars, by one year as the rapidly-spreading virus has disrupted production.
- The Avatar sequel is now set to debut in theatres in December 2022, and the 10th episode of Star Wars in December 2023.
- "It's become clear that nothing can be set in stone when it comes to how we release films during this global health crisis," a Disney representative said in a statement.
- "Today that means pausing our release plans for 'Mulan' as we assess how we can most effectively bring this film to audiences around the world."

<https://www.aljazeera.com/news/2020/07/disney-delays-blockbuster-films-due-covid-19-pandemic-200724054854476.html>

RELATED

## **AMC, Cineworld further delay reopening of U.S. movie theaters**

- The nation's largest film chain AMC Entertainment Holdings (AMC.N) said on Thursday that it has postponed its theater reopening in the U.S. to mid-to-late August to match Disney's "Mulan" and Christopher Nolan's thriller "The new release date of "Tenet". But earlier this week, Warner Bros. "Tenet", which was scheduled to be released on August 12, will be postponed indefinitely. The British Cineworld Group PLC (CINE.L) also postponed the reopening of its American theaters to mid-August, but the company is still expected to welcome British moviegoers by the end of this month. AMC also stated that about one-third of AMC theaters in Europe and the Middle East have opened and are operating normally.

<https://www.reuters.com/article/us-amc-ent-holdg-reopening/amc-cineworld-further-delay-reopening-of-u-s-movie-theaters-idUSKCN24O1V8>

## **One Good Thing**

- Stories about the kindness of strangers and individuals who sacrifice for others.

<https://apnews.com/OneGoodThing> & <https://www.goodnewsnetwork.org/>

# Americans are Leaving Home More Often Now Than in April, though Coronavirus Fears Remain

The poll also finds most people who put off care due to coronavirus expect to get it within the next three months.

## Compared to April, Public Reports Leaving Home More Frequently to Shop, Visit, and Work

Percent who have left their home at least once in the last week to...

### ...shop for food, medicine, or essential household items:



### ...visit close friends or family:



### ...go to work:



<https://www.kff.org/coronavirus-covid-19/>

<https://www.kff.org/report-section/kff-health-tracking-poll-june-2020-social-distancing-delayed-health-care-and-a-look-ahead-to-the-2020-election/>

# U.S. Data

## Covid-19 Case Cluster (past 48 hours)

<https://www.cdc.gov/covid-data-tracker/index.html>

### Social Impact COVID-19 Events in the United States

**18** EVENTS  
Past 48 hours

Map of news reports related to social impact events resulting from the COVID-19 outbreak in the United States, such as school closures, localized outbreaks, state of emergency declarations, etc.

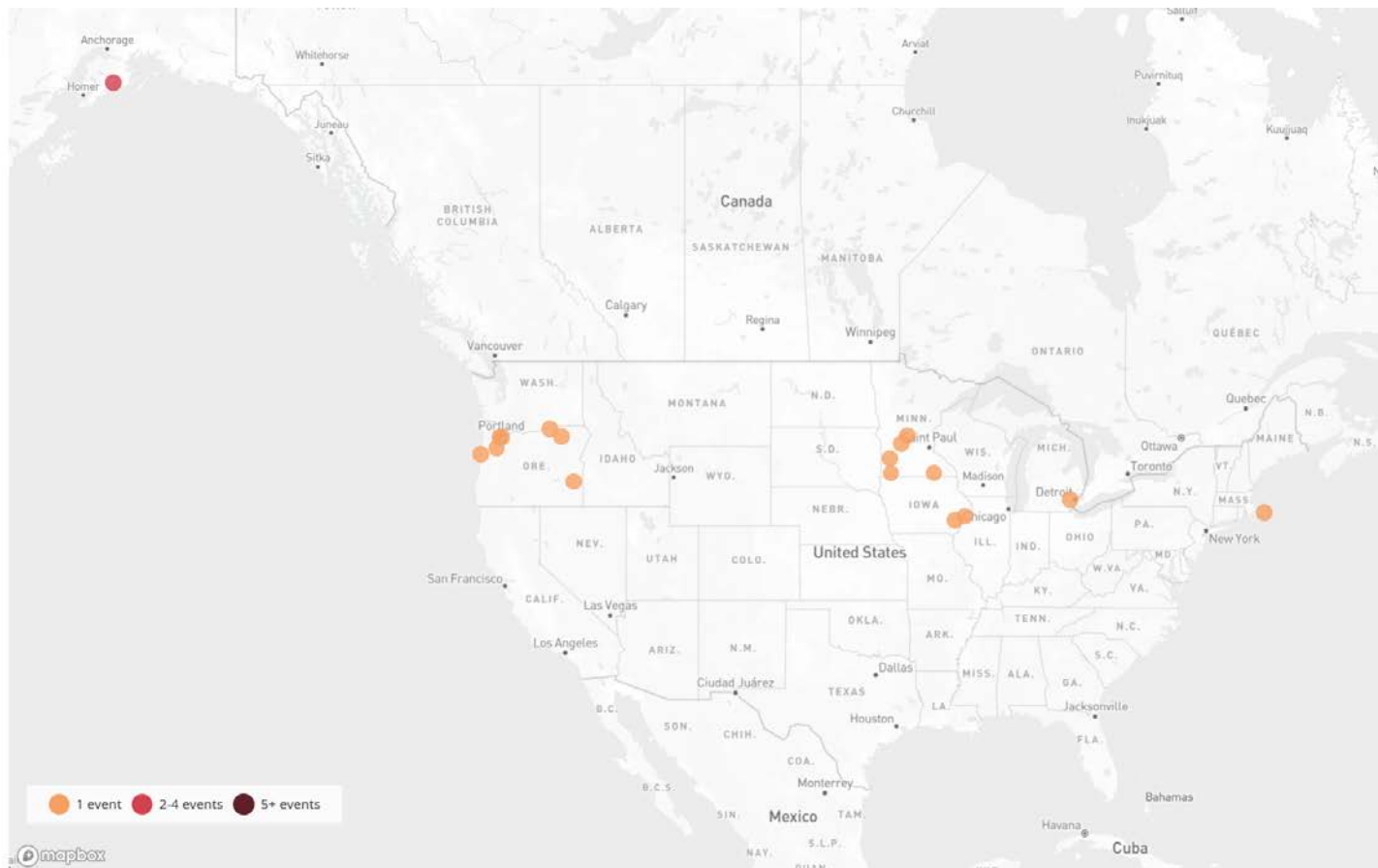
DATE RANGE

Past 48 hours

TYPE OF EVENT ?

COVID-19 Case Clusters

[About this Map](#) | Developed by [HealthMap](#)



## ARTICLES:

[Chatham house party draws COVID-19 'cluster notification' as at least 10 test positive](#)

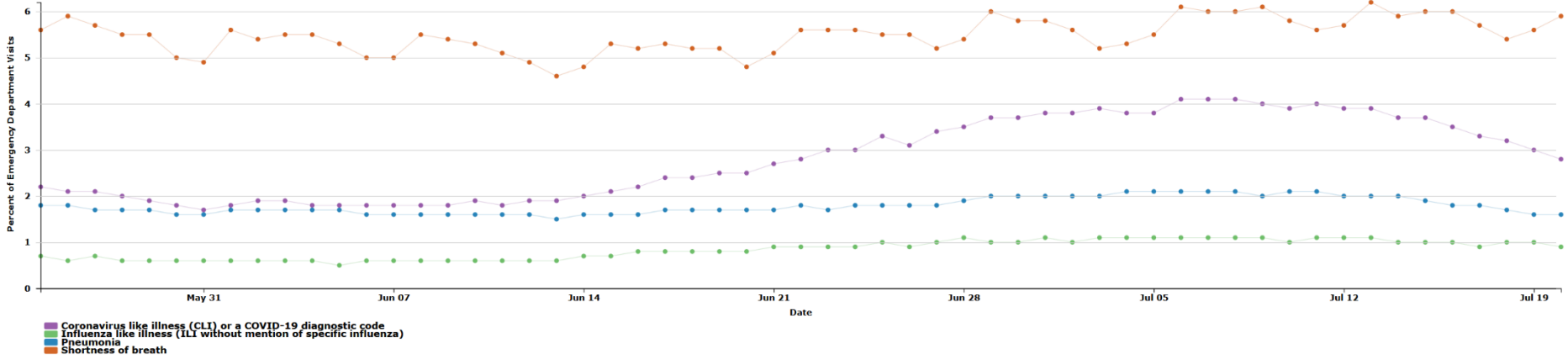
[Convent outside Detroit lost 13 nuns to Covid-19 with 12 dying in one month](#)

## United States Trends in Emergency Department Visits

United States



Percentage of ED visits by syndrome in United States: COVID-19-Like Illness, Shortness of Breath, Pneumonia, and Influenza-Like Illness



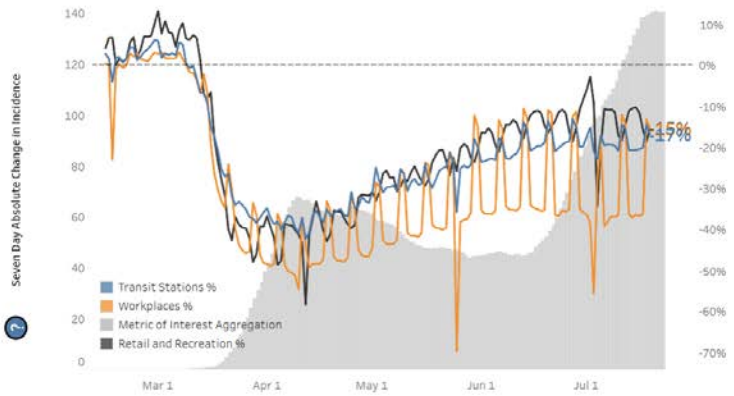
### EXPLORE HUMAN MOBILITY AND COVID-19 TRANSMISSION IN YOUR LOCAL AREA

SELECT STATE | 
  SELECT COUNTY | 
  SELECT URBAN/RURAL COUNTY CLASSIFICATION | 
  SELECT METRIC OF INTEREST



The Human Mobility and COVID-19 Transmission Dashboard was created in partnership with the Georgia Tech Research Institute. References to the Georgia Tech Research Institute do not imply endorsement or government sanction by the U.S. Centers for Disease Control and Prevention.

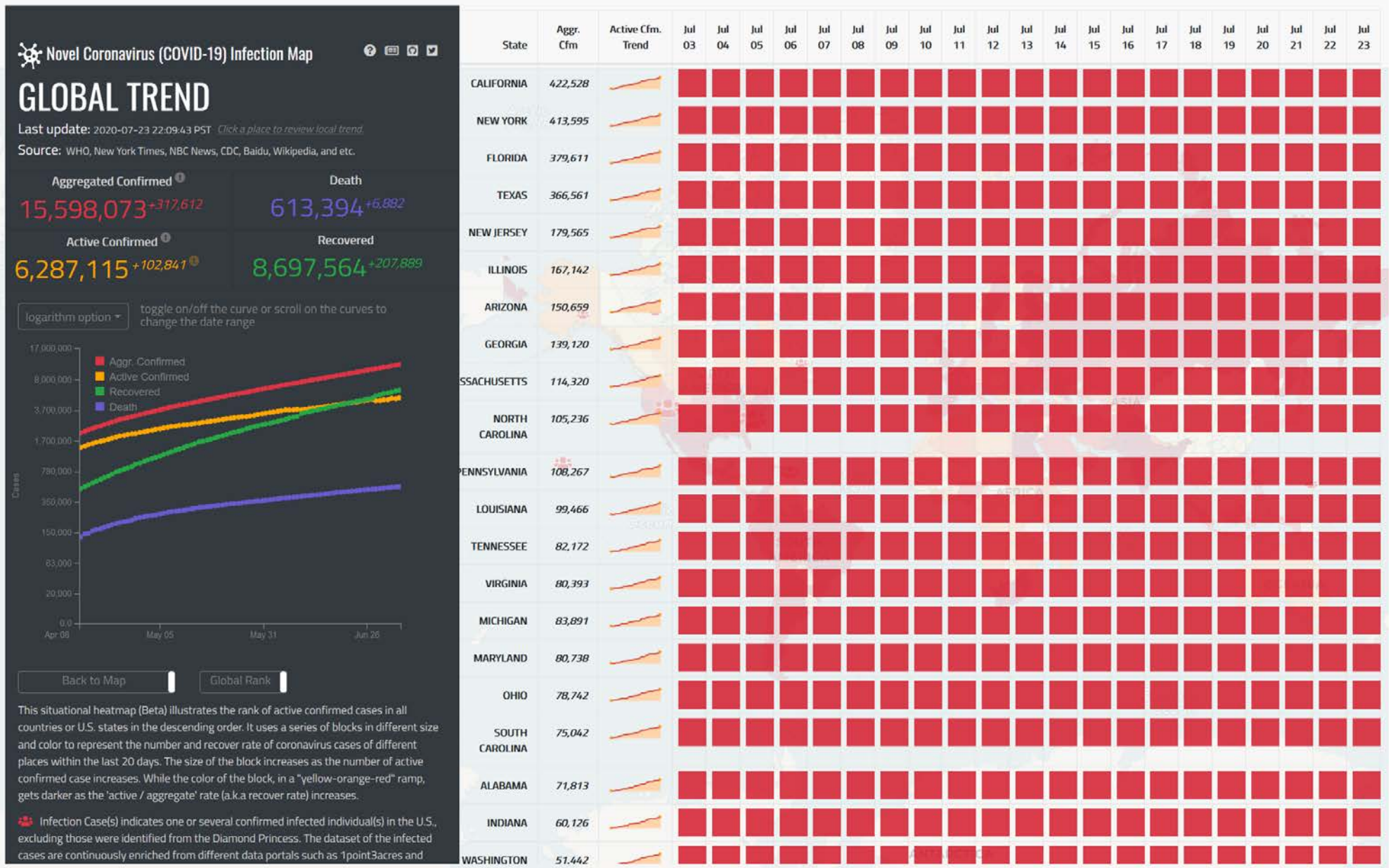
All, USA



<b>WORKPLACES</b> -15%	50% 0% -50% Mar 1 Apr 1 May 1 Jun 1 Jul 1
<b>RETAIL AND RECREATION</b> -15%	50% 0% -50%
<b>TRANSIT STATIONS</b> -17%	50% 0% -50%
<b>% AT HOME</b> 34%	40% 20%
<b>MOBILITY INDEX</b> 3.8	3 2 1

Hover over bar for dates and details (Select a state from dropdown to show orders)

Data Sources: Case data are courtesy of USAFacts.org. Refer to USAFacts for methods of data collection and processing. Officially verified U.S. case data are available on CDC's U.S. Cases page. The mobility metrics are generated utilizing Google Mobility Reports (https://www.google.com/covid19/mobility/), Sefigraph Social Distancing Metric: (https://data.sefigraph.com/), and Cuebio Mobility Insights (https://www.cuebio.com/us/infocenter/covid19/). The shelter in place orders are collected and compiled by CDC's COVID-19 response. Limitations: The Google Mobility Reports data are not updated as frequently as other sources and often has a lag between updates. The Sefigraph Social Distancing Metrics may undercount the number of at-home devices due to the fact that GPS does not register as often for people who are stationary. Also, GPS does not consistently update throughout the day, therefore someone may have taken a short trip (or not taken the device) and returned home before a sample was taken. In this case they would be counted as at-home. The shelter in place order data do not contain other types of government orders.



# COVID-19 Update



**Situation:** Upward trajectory in COVID-19 case count continues across 11 (-10) states, with 26 (+5) states in a plateau status. 29,835 (-408) Federal employees deployed / activated; 2,239 (-9) FEMA employees deployed.

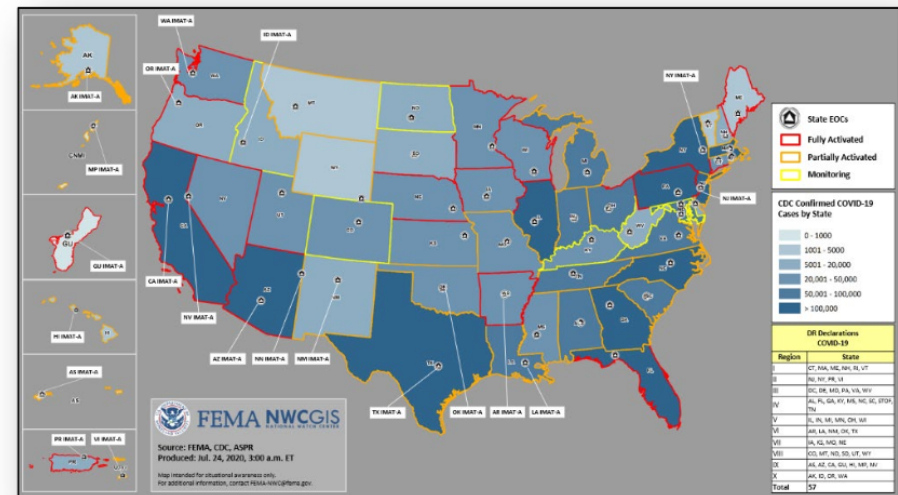
Nationwide Testing: 51,680,022 (+1,336,756) cumulative (as of July 23)

COVID-19 positive cases continue to increase globally (CDC COVID-19 Response Update as of July 23)

- Confirmed Cases of COVID-19
  - United States: 3,952,273 (+70,106)
  - Worldwide: 15,012,731 (+247,475)
- Deaths caused by COVID-19
  - United States: 142,755 (+1,078)
  - Worldwide: 619,150 (+7,096)

## Response:

- NRCC at Level I
- Regions I, II, III, V, VI, & X RRCCs at Level III
- Regions IV, VII, VIII, & IX RRCCs are rostered
- Regions VII & IX COVID-19 response being worked from the Virtual JFO
- NWC, all RWCs, and MOCs are monitoring



(COVID-19 SLB, July 23)

# State Data

<https://covid19.ca.gov/>  
<https://update.covid19.ca.gov/#top>  
<https://www.cdph.ca.gov/Programs/CID/DCDC/Pages/Immunization/ncov2019.aspx#>

## Statewide industry guidance to reduce risk

<https://covid19.ca.gov/industry-guidance/#top>  
<https://www.cdph.ca.gov/Programs/CID/DCDC/Pages/Guidance.aspx>

## Open sectors in counties with variance

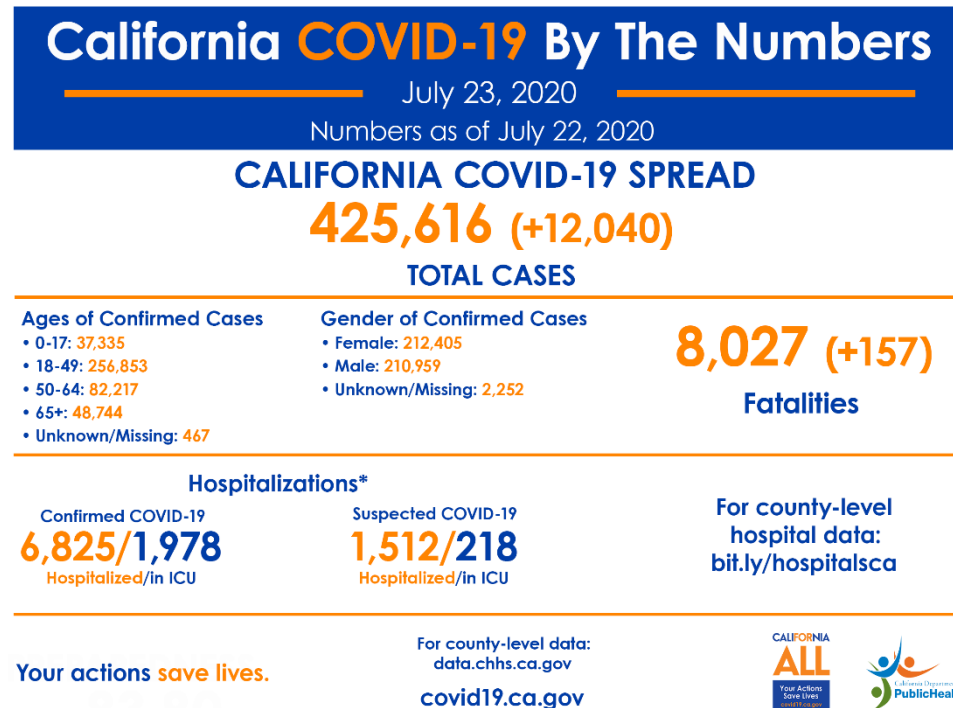
<https://covid19.ca.gov/roadmap-counties/#track-data>  
<https://covid19.ca.gov/roadmap-counties/>

## Data models

<https://covid19.ca.gov/data-and-tools/>

## Take the State survey

<https://www.surveymonkey.com/r/W56KTRS?source=covid>



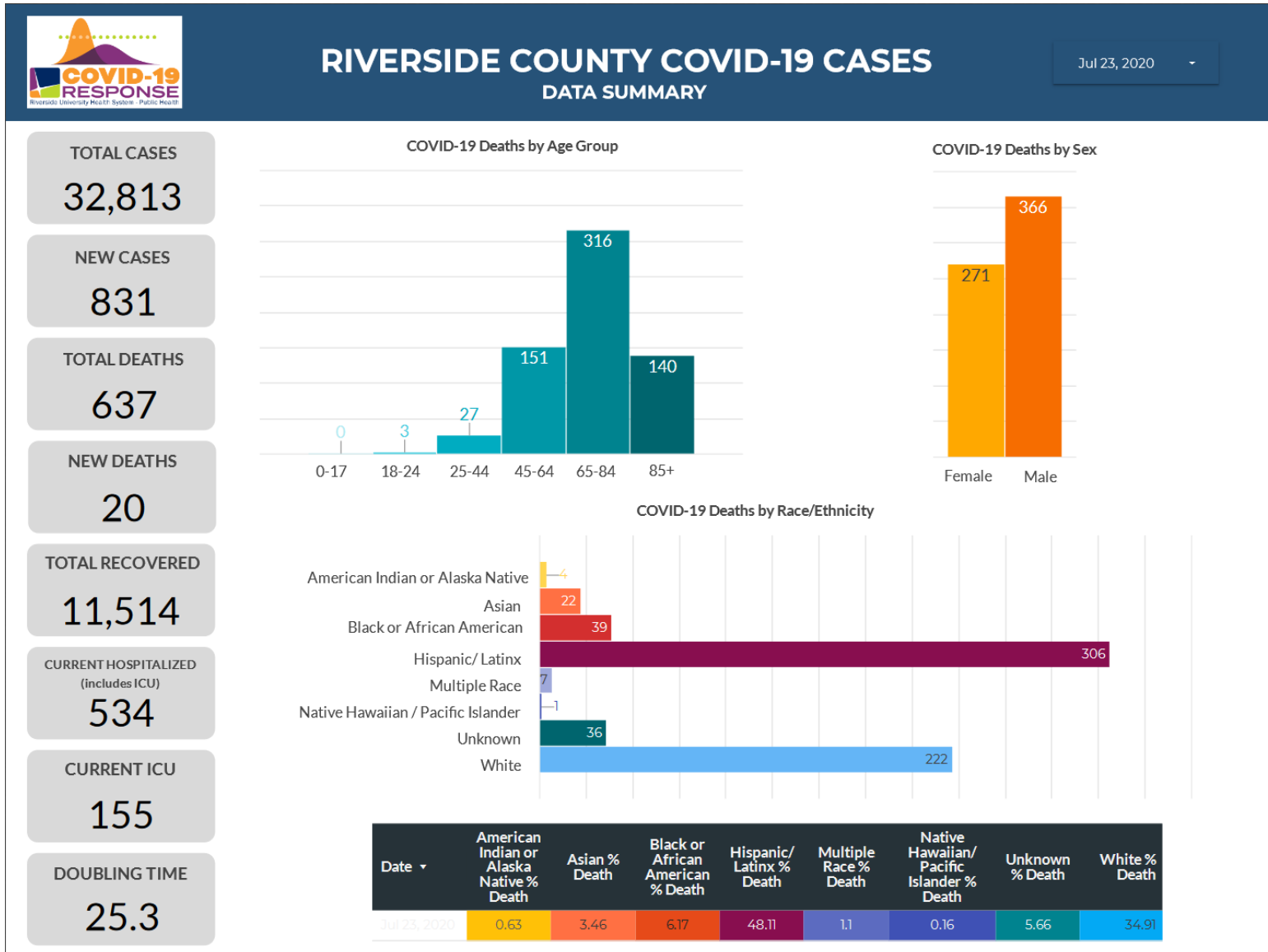
# Riverside County Data

<https://www.rivcoph.org/coronavirus>

## RUHS Public Health:

[Advisory Concerning Live Music Events](#) - July 22, 2020

[Advisory for The Operation of Youth Team Sports](#) - July 22, 2020





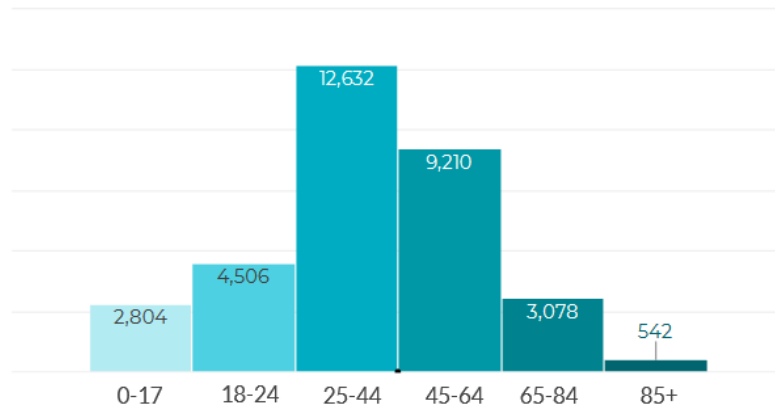


# RIVERSIDE COUNTY COVID-19 CASES

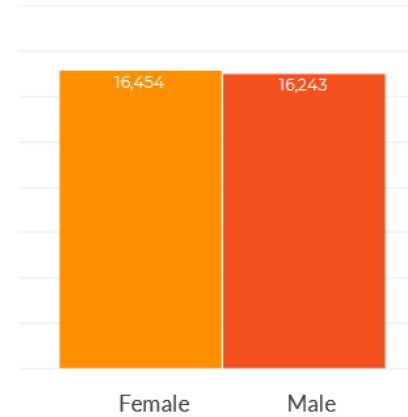
## DATA SUMMARY

Jul 23, 2020 - ▾

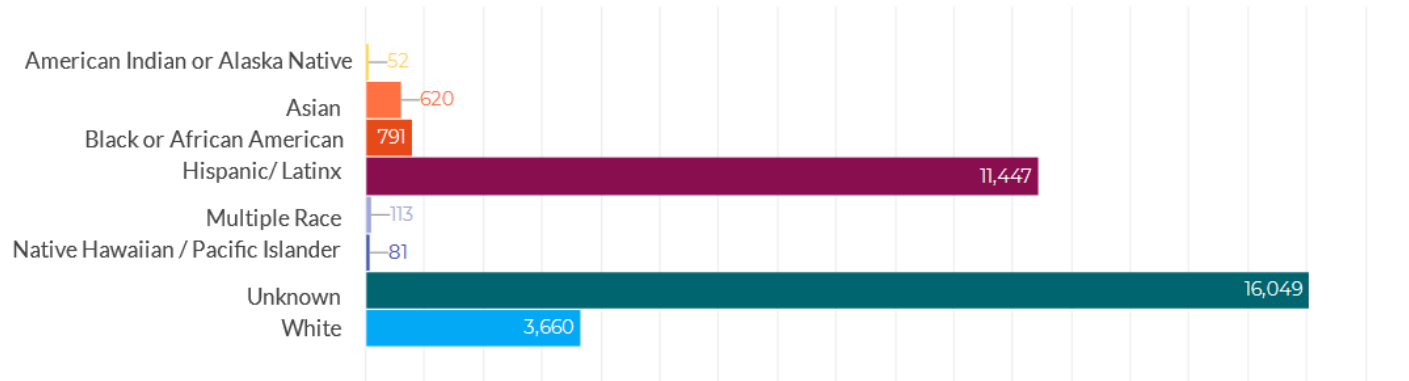
COVID-19 Cases by Age Group



COVID-19 Cases by Sex



COVID-19 Cases by Race/Ethnicity

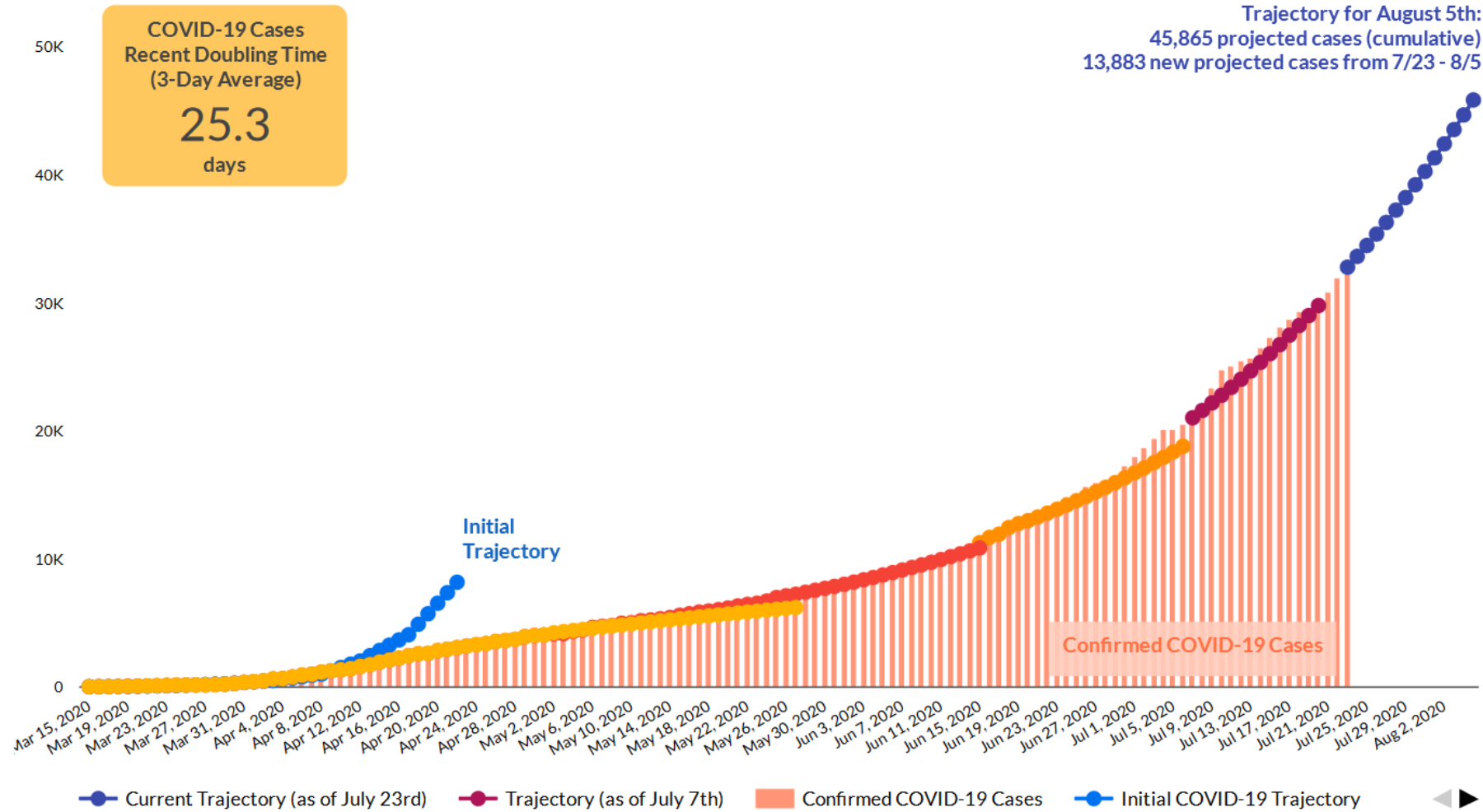


Date	American Indian or Alaska Native % Cases	Asian % Cases	Black or African American % Cases	Latinx % Cases	Multiple Race % Cases	Native Hawaiian / Pacific Islander % Cases	Unknown % Cases	White % Cases
Jul 23, 2020	0.2	1.9	2.4	34.9	0.3	0.2	48.9	11.2



# RIVERSIDE COUNTY COVID-19 TRAJECTORY

Jul 23, 2020 - Jul 23, 2020



**MAJOR EVENTS:**

March 13th: Public Health Officer orders school closure  
 March 19th: California Governor orders stay at home  
 April 4th: Public Health Officer orders stay at home and cover the face  
 April 18th: Asymptomatic testing begins

May 1st: Riverside County reverts to State orders  
 May 8th: Riverside County begins Phase 2  
 May 22nd: Riverside County accelerates to Phase 2.5  
 May 25: Memorial Day  
 June 1: Protest Downtown Riverside

June 29th: Bar closures ordered in Riverside County  
 July 1st: Indoor dining and other select indoor venues closed

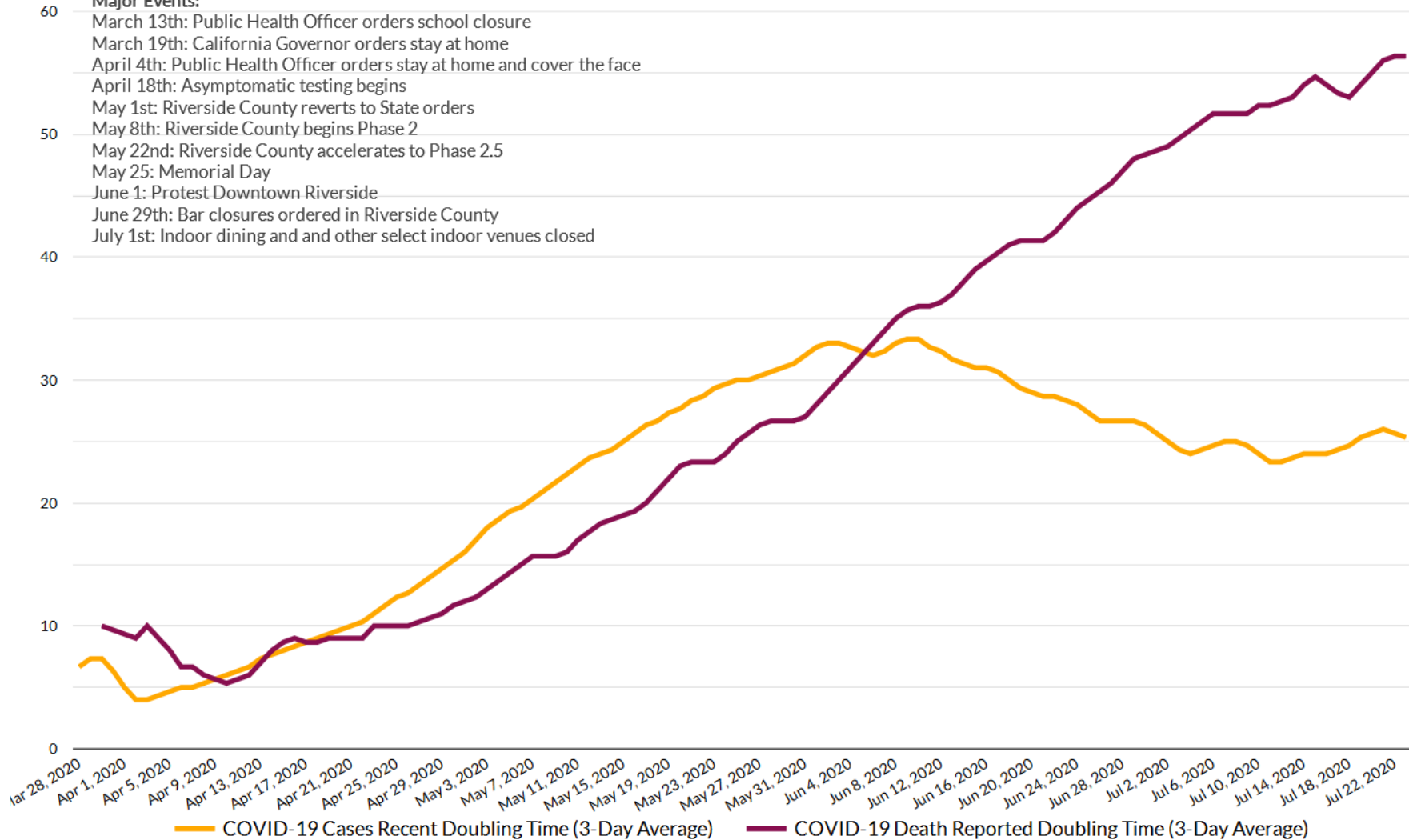


# RIVERSIDE COUNTY COVID-19 DOUBLING TIME

Mar 28, 2020 - Jul 23, 2020

**Major Events:**

- March 13th: Public Health Officer orders school closure
- March 19th: California Governor orders stay at home
- April 4th: Public Health Officer orders stay at home and cover the face
- April 18th: Asymptomatic testing begins
- May 1st: Riverside County reverts to State orders
- May 8th: Riverside County begins Phase 2
- May 22nd: Riverside County accelerates to Phase 2.5
- May 25: Memorial Day
- June 1: Protest Downtown Riverside
- June 29th: Bar closures ordered in Riverside County
- July 1st: Indoor dining and other select indoor venues closed



\*Based on case report date and death report date

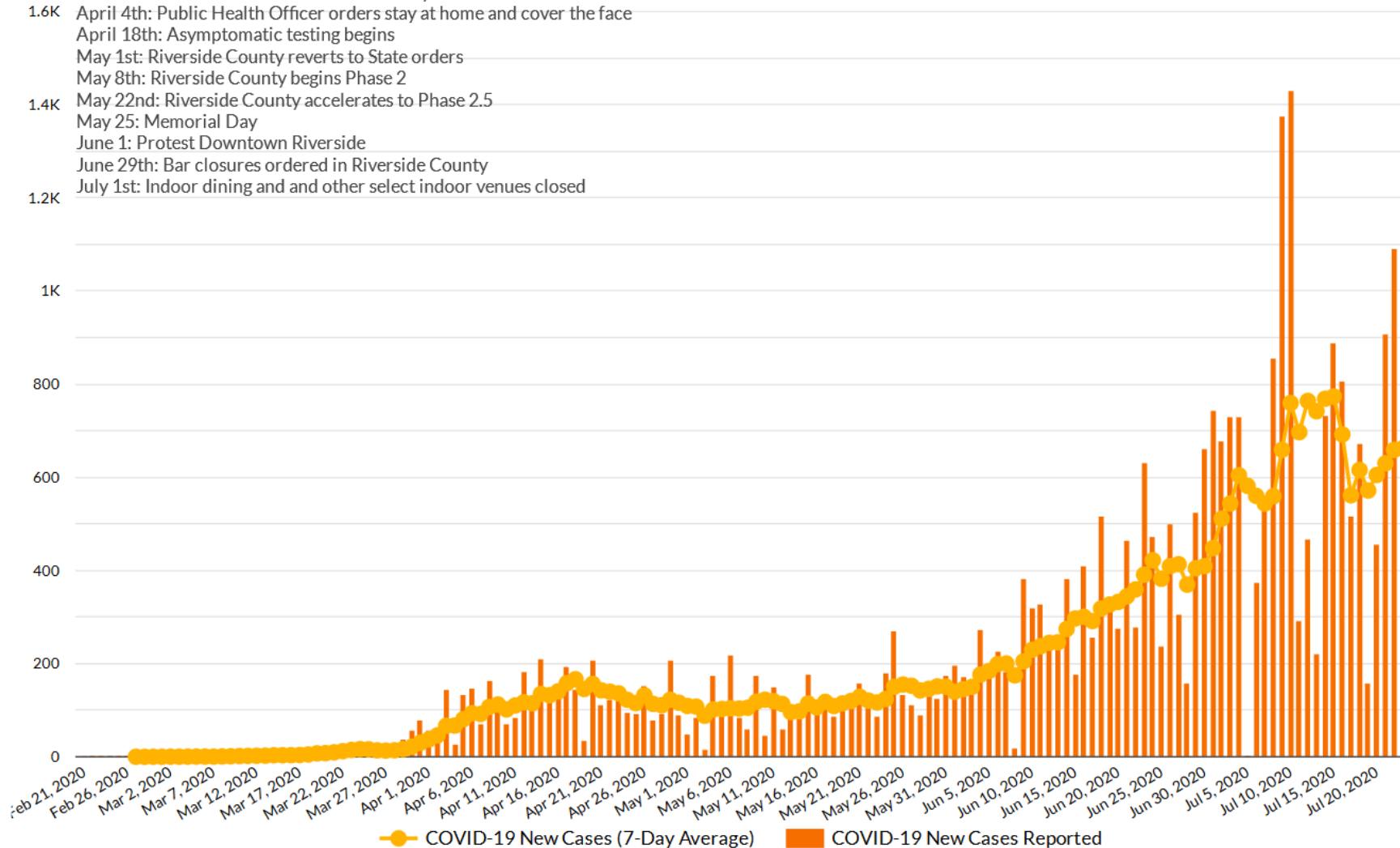


# RIVERSIDE COUNTY DAILY COVID-19 CASES

Feb 21, 2020 - Jul 23, 2020

**Major Events:**

- March 13th: Public Health Officer orders school closure
- March 19th: California Governor orders stay at home
- 1.6K April 4th: Public Health Officer orders stay at home and cover the face
- April 18th: Asymptomatic testing begins
- May 1st: Riverside County reverts to State orders
- May 8th: Riverside County begins Phase 2
- 1.4K May 22nd: Riverside County accelerates to Phase 2.5
- May 25: Memorial Day
- June 1: Protest Downtown Riverside
- June 29th: Bar closures ordered in Riverside County
- 1.2K July 1st: Indoor dining and and other select indoor venues closed



\*Based on case report date

\*\*No cases reported on 7/5 due to July 4th holiday weekend

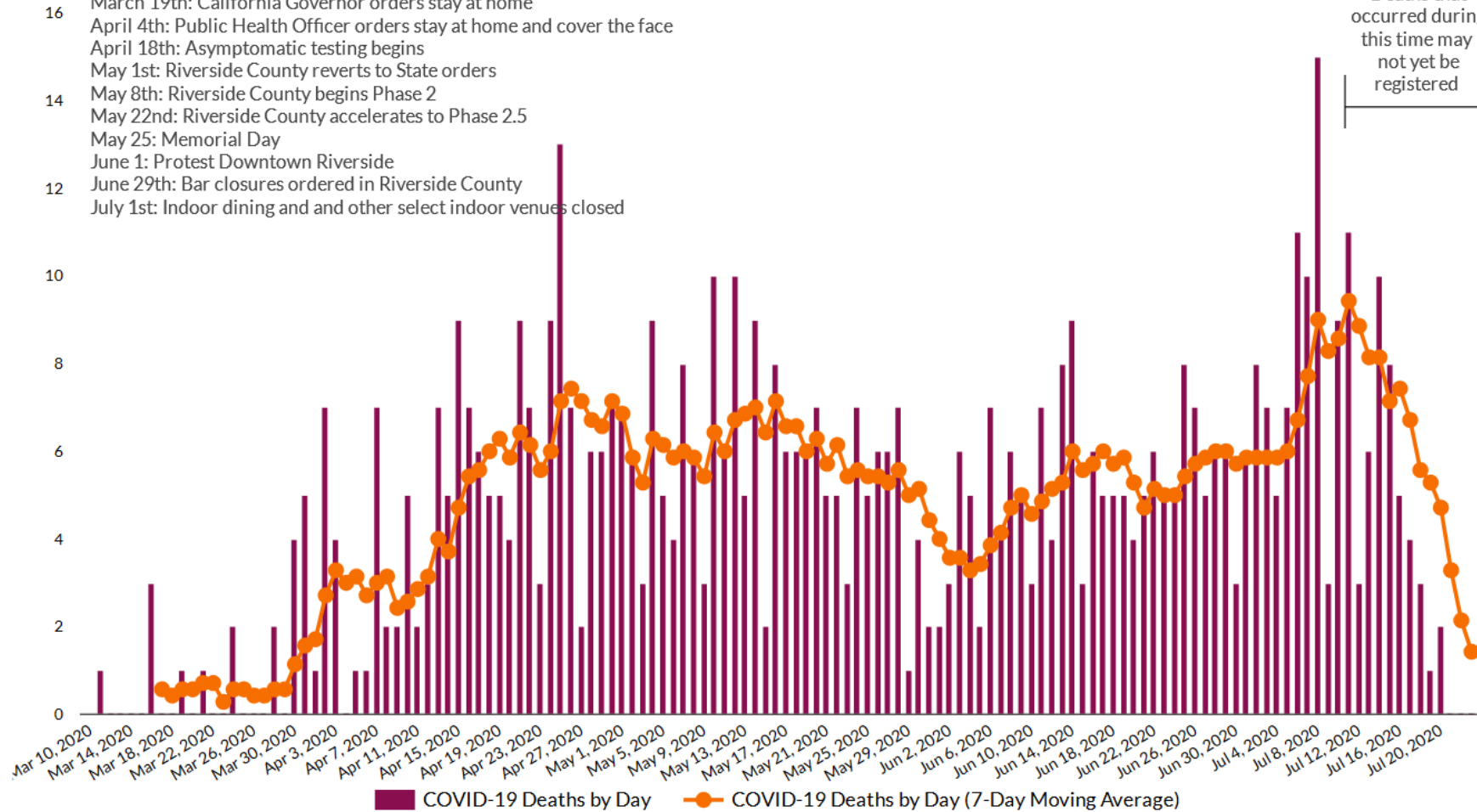


# RIVERSIDE COUNTY COVID-19 DEATHS

**Major Events:**

- March 13th: Public Health Officer orders school closure
- March 19th: California Governor orders stay at home
- April 4th: Public Health Officer orders stay at home and cover the face
- April 18th: Asymptomatic testing begins
- May 1st: Riverside County reverts to State orders
- May 8th: Riverside County begins Phase 2
- May 22nd: Riverside County accelerates to Phase 2.5
- May 25: Memorial Day
- June 1: Protest Downtown Riverside
- June 29th: Bar closures ordered in Riverside County
- July 1st: Indoor dining and and other select indoor venues closed

Deaths that occurred during this time may not yet be registered



■ COVID-19 Deaths by Day    ● COVID-19 Deaths by Day (7-Day Moving Average)

*\*Based on date of death*



# RIVERSIDE COUNTY COVID-19 CASES

## by lab specimen collection date

Positivity rate is now determined using specimen collection date with a 7-day lag to align with State methodology

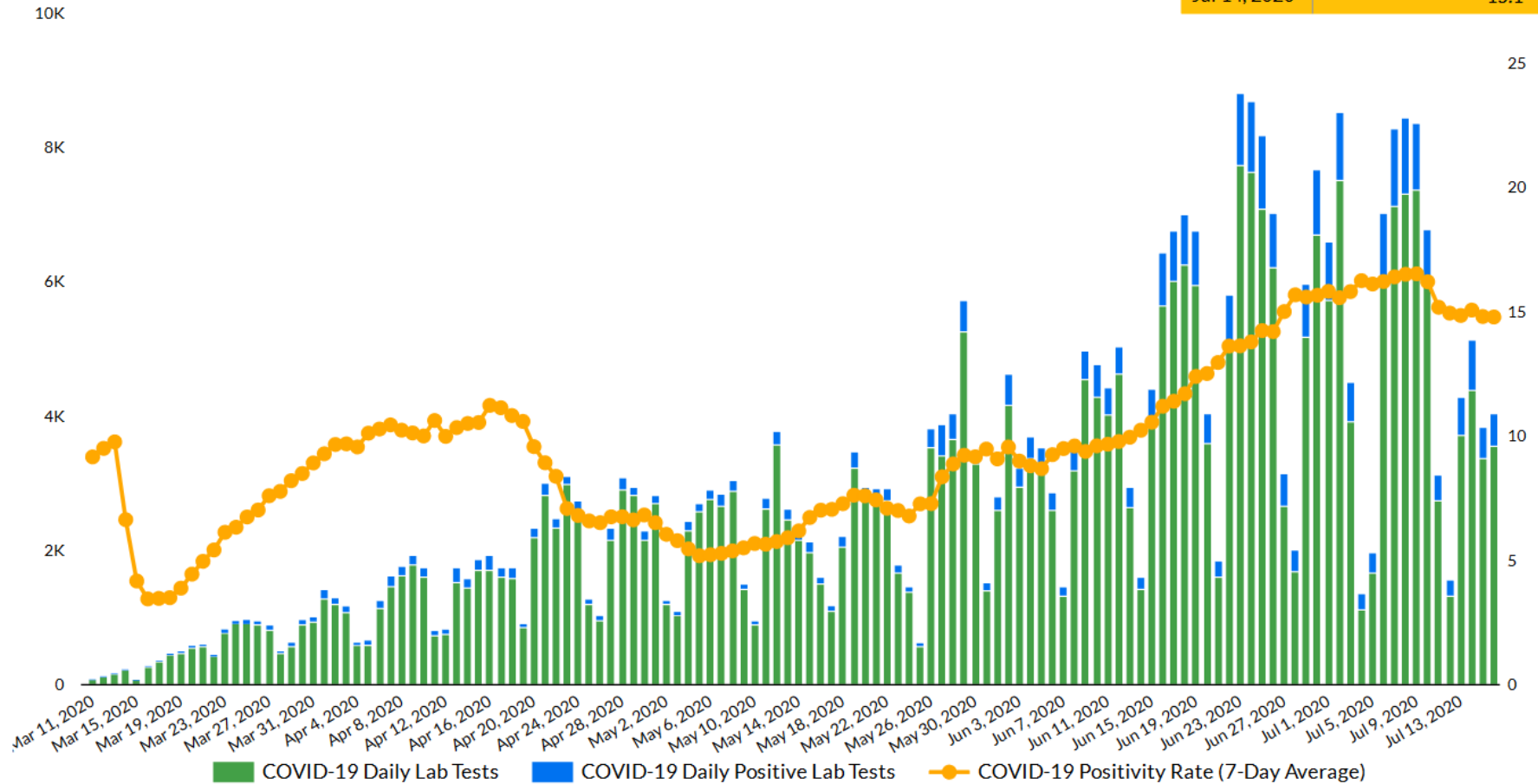
POSITIVE\*

**37,888**

TESTS RESULTED\*

**341,567**

Date	Recent Positivity Rate
Jul 16, 2020	14.8
Jul 15, 2020	14.8
Jul 14, 2020	15.1





\*Based on lab specimen collection date  
 \*Numbers are based on lab reporting and may slightly differ from confirmed case counts

# Weather

## COVID-19 Weather Support

**Issued:**

1100 AM July 23 2020

IMPACT SCALE

●  
None

●  
Minor

●  
Moderate

●  
High

●  
Extreme

### Resources

- <https://www.weather.gov/spot/>
- <https://inws.ncep.noaa.gov>
- <https://www.wrh.noaa.gov/sgx/event/dsstable.php>

(858) 675 - 8705  
(24/7, Restricted)

Weather.gov/SanDiego

## 7-day Forecast for Counties in far Southwest CA

Period July 23 - July 30 (24-hr)	Orange	SW San Bernardino	All Deserts	Western Riverside	San Diego
Today	None	None	Breezy	None	None
Friday	None	None	None	None	None
Saturday	None	None	None	None	None
Sunday	None	None	Warmer	None	None
Monday	None	None	Warm	None	None
Tuesday	None	None	Warm	None	None
Wednesday	None	Isolated mtn t-storms	Warm	Isolated mtn t-storms	Isolated mtn t-storms
Thursday	None	Isolated mtn t-storms	Warm	Isolated mtn t-storms	Isolated mtn t-storms

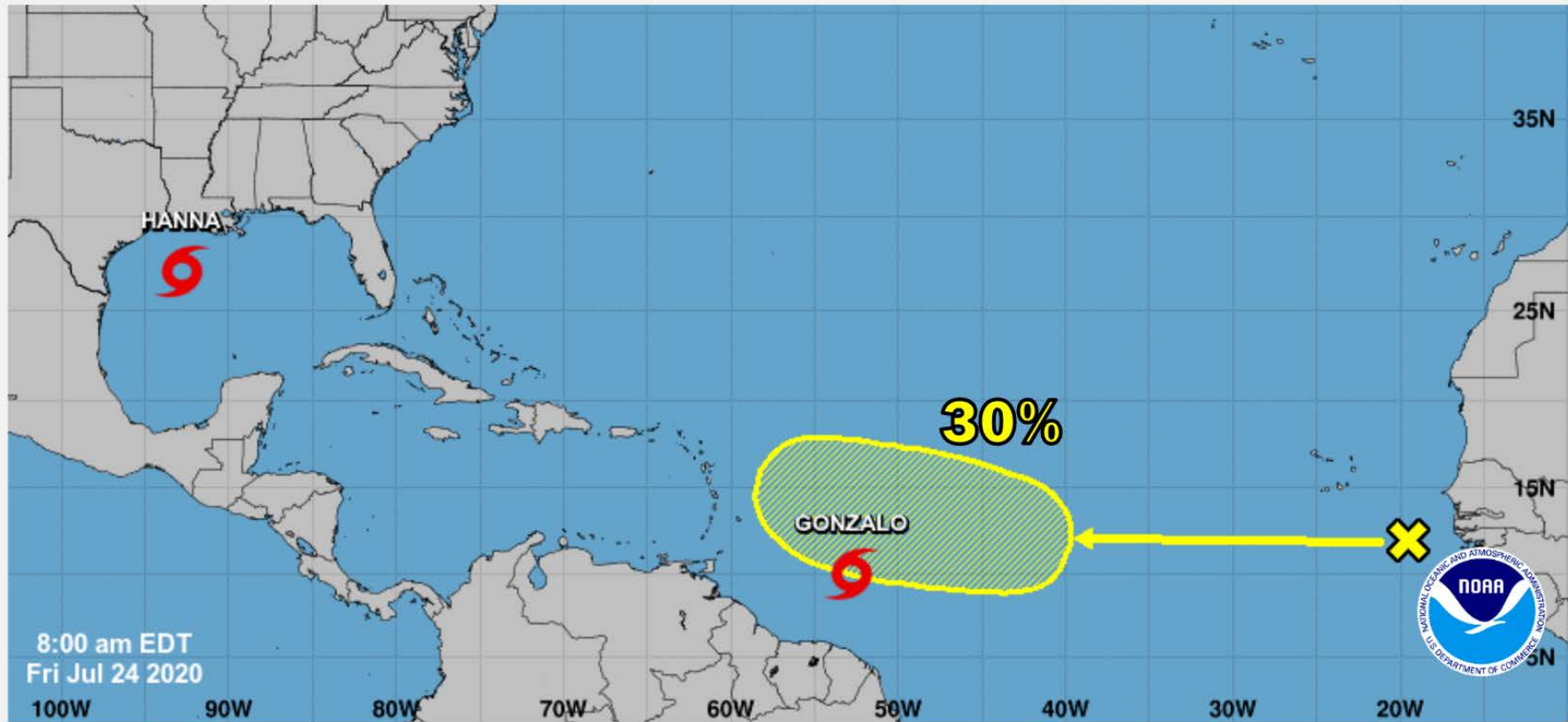
Forecast Discussion

Widespread cooler temperatures are expected on through Saturday,, with high temperatures looking to range 5-10 degrees below average as a weak upper-level system impacts the California coast. A gradual warm up will occur through the second half of the weekend through mid next week,, with temperatures returning to near seasonal normals. Monsoon moisture could enter SoCal during the middle part of next week, which may result in some isolated showers and thunderstorms in the mountains and on the desert mountain slopes.

Latest hazard threat table: <https://www.wrh.noaa.gov/sgx/event/dsstable.php>  
<https://www.weather.gov/forecastpoints#>

# Atlantic Overview

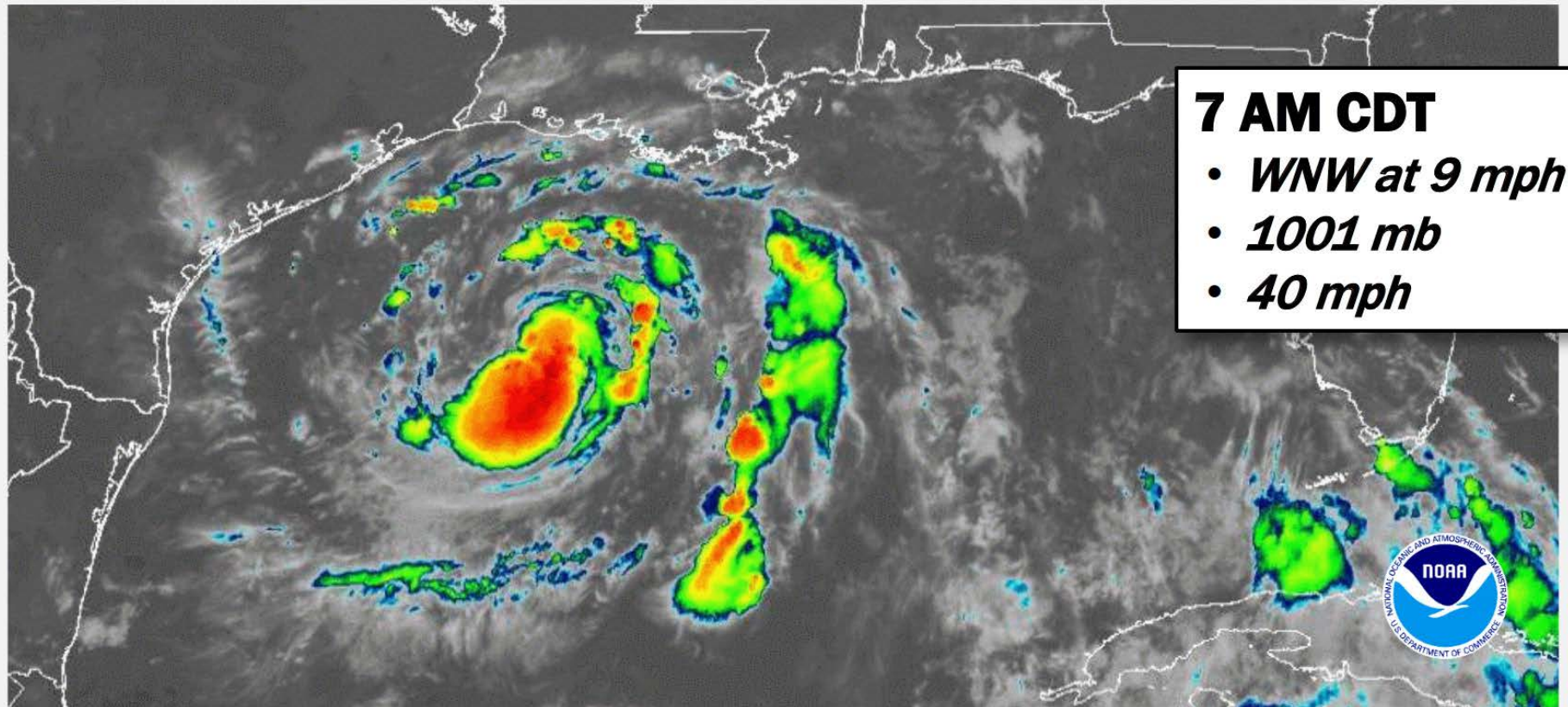
## TROPICAL OUTLOOK





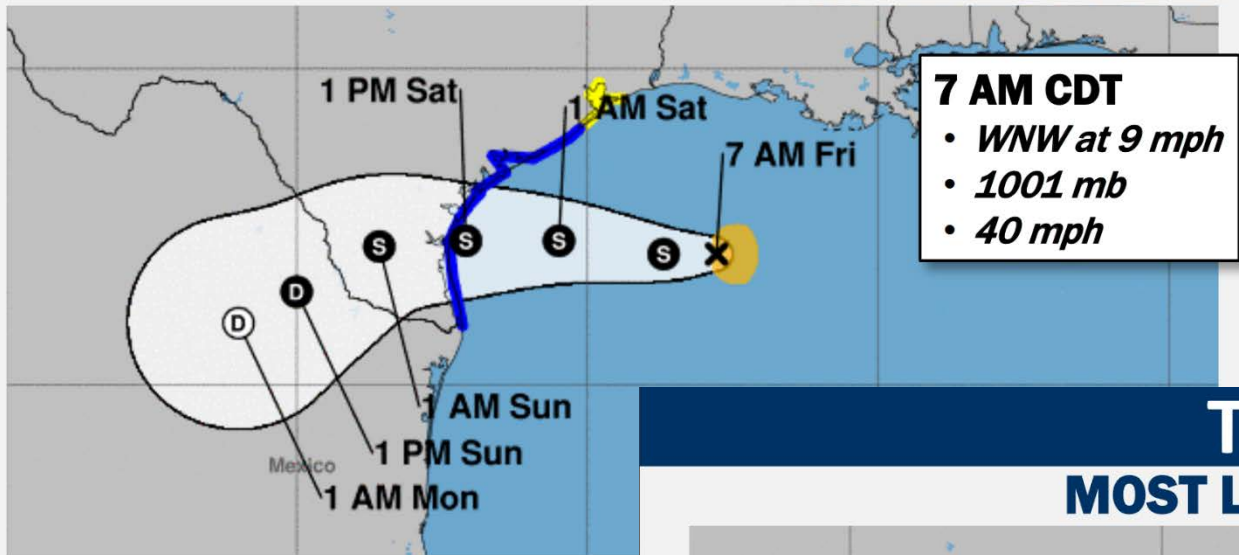
# Tropical Storm Hanna

## SATELLITE LOOP



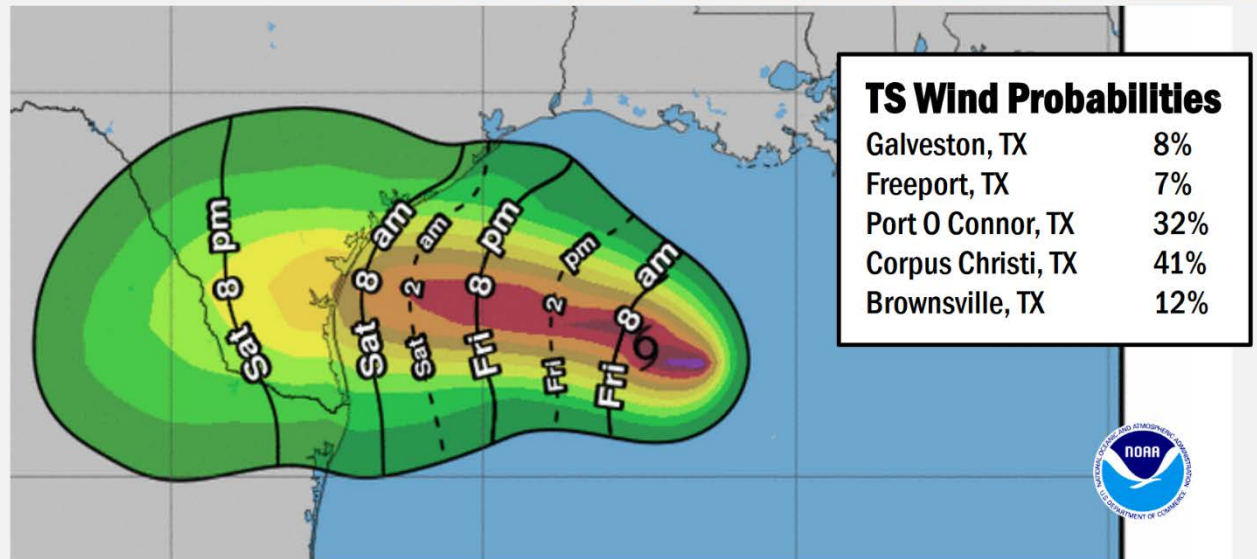
# Tropical Storm Hanna

## FORECAST TRACK



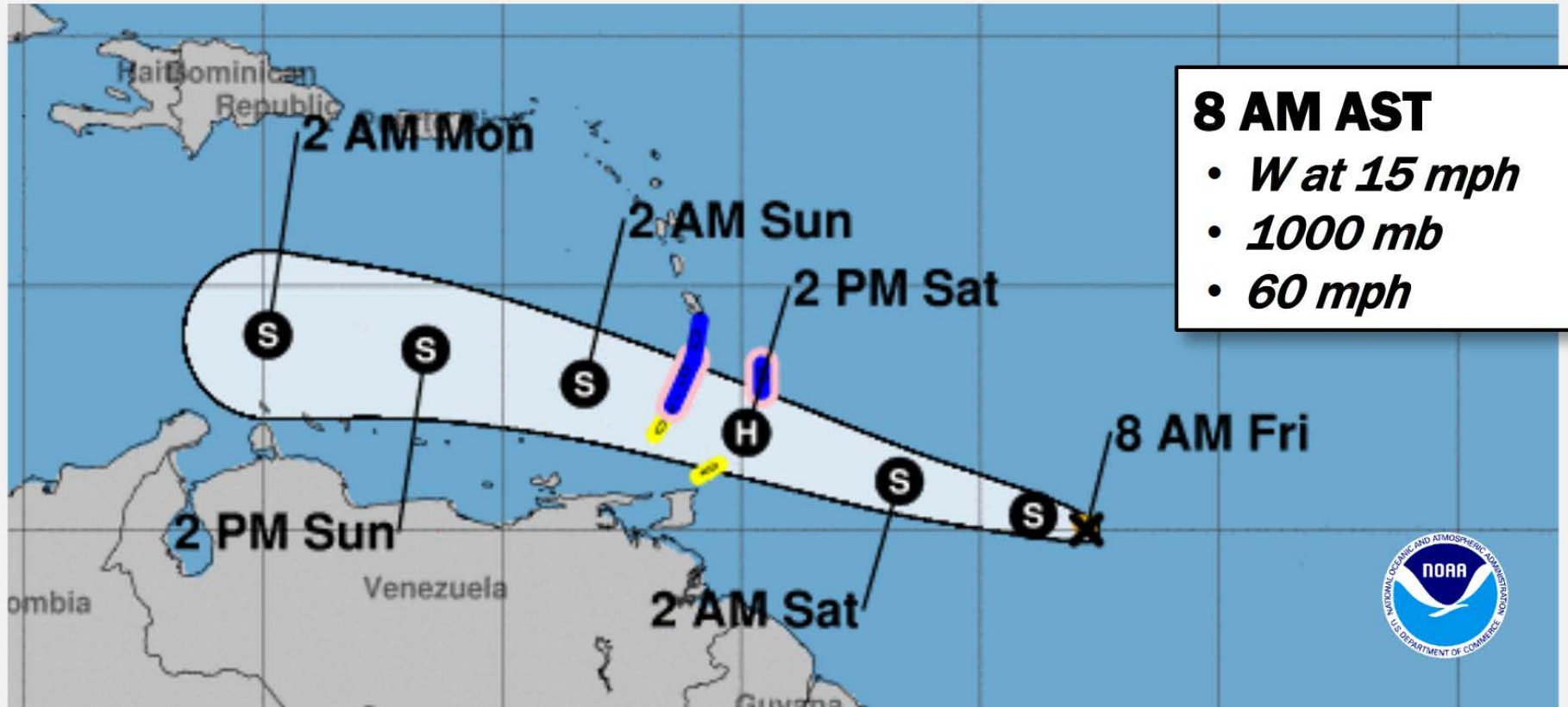
# Tropical Storm Hanna

## MOST LIKELY ARRIVAL OF TS WINDS



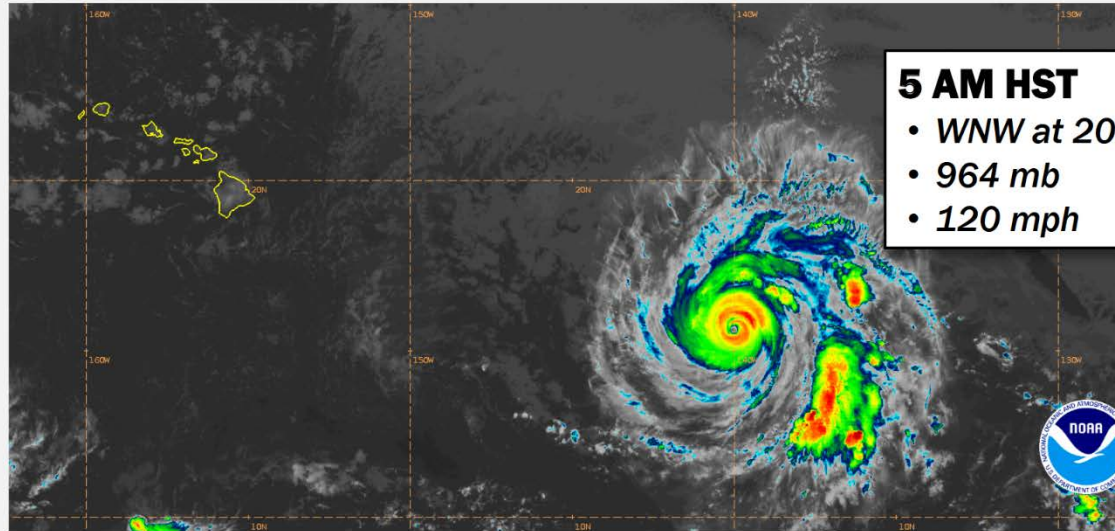
# Tropical Storm Gonzalo

## FORECAST TRACK



# Hurricane Douglas

## SATELLITE LOOP

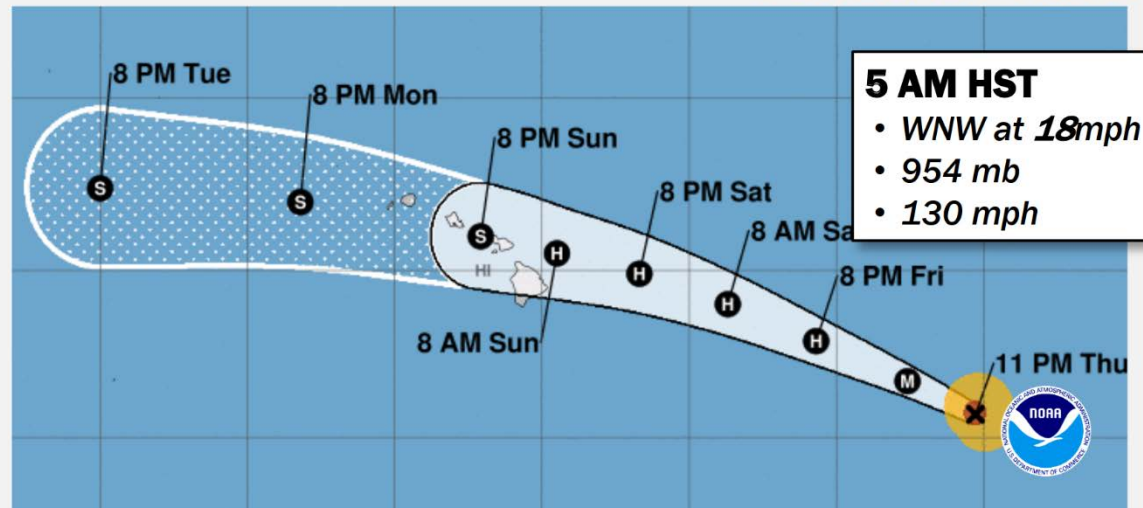


**5 AM HST**

- WNW at 20mph
- 964 mb
- 120 mph

# Hurricane Douglas

## FORECAST TRACK



**5 AM HST**

- WNW at 18mph
- 954 mb
- 130 mph