



**\*\*Extraordinary Assumptions: There are a lot of different data sources in this report not all of them match but aid to provide an overall picture of the current situation. COVID-19 Data Source Comparison - [https://covid-19.splunkforgood.com/covid\\_19\\_datasource\\_comparison](https://covid-19.splunkforgood.com/covid_19_datasource_comparison)**

# Daily Situation Summary

## Monday, July 20, 2020

### As of 10:00 AM

## COVID-19 by the Numbers

07/20/2020	Riverside	Imperial	Kern	Los Angeles	Orange	San Bernardino	San Diego	San Luis Obispo	Sana Barbra	Ventura	California	United States	Global
Total Cases	30,245	8,531	9,250	153,265	29,603	23,680	23,116	1,234	5,110	5,630	384,692	3,698,161	14,263,202
New Cases	606	75	959	2,784	641	623	625	44	109	179	9,329	67,574	220,026
Cases Per Capita	1,269	4,734	1,048	1,518	936	1,109	700	438	1,152	664	983	1,121	186
Recovered	<a href="#">10,416</a>	<a href="#">7,310</a>	<a href="#">4,736</a>	<a href="#">Not Reported</a>	<a href="#">13,581</a>	<a href="#">13,923</a>	<a href="#">16,248</a>	<a href="#">737</a>	<a href="#">4,326</a>	<a href="#">2,667</a>	<a href="#">104,740</a>	<a href="#">1,802,552</a>	<a href="#">8,775,137</a>
Total Deaths	587	161	105	4,084	494	328	478	6	32	56	7,685	139,659	602,244
New Deaths	0	5	0	37	25	13	6	0	0	0	90	877	4,661
Deaths Per Capita	24.63	89.34	11.89	40.44	15.61	15.36	14.47	2.13	7.21	6.60	19.63	42.33	7.86
Presumptive active cases	19,242	1,060	4,409		15,528	9,429	6,390	491	752	2,907	272,267	1,755,950	4,885,821
% of State's Cases	7.86%	2.22%	2.40%	39.84%	7.70%	6.16%	6.01%	0.32%	1.33%	1.46%	<b>10.40%</b>	<b>25.93%</b>	
Currently in Hospitals	677	93	277	2,840	729	699	487	14	91	93	8,398		
Total Hospital Beds	4,108	298	1,822	23,972	7,428	4,766	6,446	467	763	298	80,599		
Currently in ICU	131	24	66	585	214	183	144	5	25	131	1,921		
ICU Beds Available	166	6	67	1,398	400	156	376	41	63	166	3,983		
Case Fatality Rate	1.9%	1.9%	1.1%	2.7%	1.7%	1.4%	2.1%	0.5%	0.6%	1.0%	2.0%	3.8%	4.2%
Population*	2,383,286	180,216	883,053	10,098,052	3,164,182	2,135,413	3,302,833	281,455	443,738	848,112	39,148,760	329,954,289	7,663,885,000
% of Population	6.09%	0.46%	2.26%	25.79%	8.08%	5.45%	8.44%	0.72%	1.13%	2.17%	<b>0.12%</b>	<b>0.0483%</b>	

Sources: CDPH, WHO, CDC

The date for which case statistics and hospital data were reported. Hospital COVID data are self-reported through a portal managed by the California Hospital Association and pulled at 2pm. COVID case statistics are reported by local health departments to CalREDIE and are pulled at 2pm. Hospital data and case statistics are integrated by the California Department of Technology and made available through the Open Data Portal the following morning.

\*California-Demographics.com is made by Cubit – a demographic data provider & census.gov

Presumptive active cases - A calculation of total casses - Recovered - Dead

### Global Data

More detail on page 2

### Information

More detail on page 5

### State Data

More detail on page 12

### Weather

More detail on page 20

### News

More detail on page 4

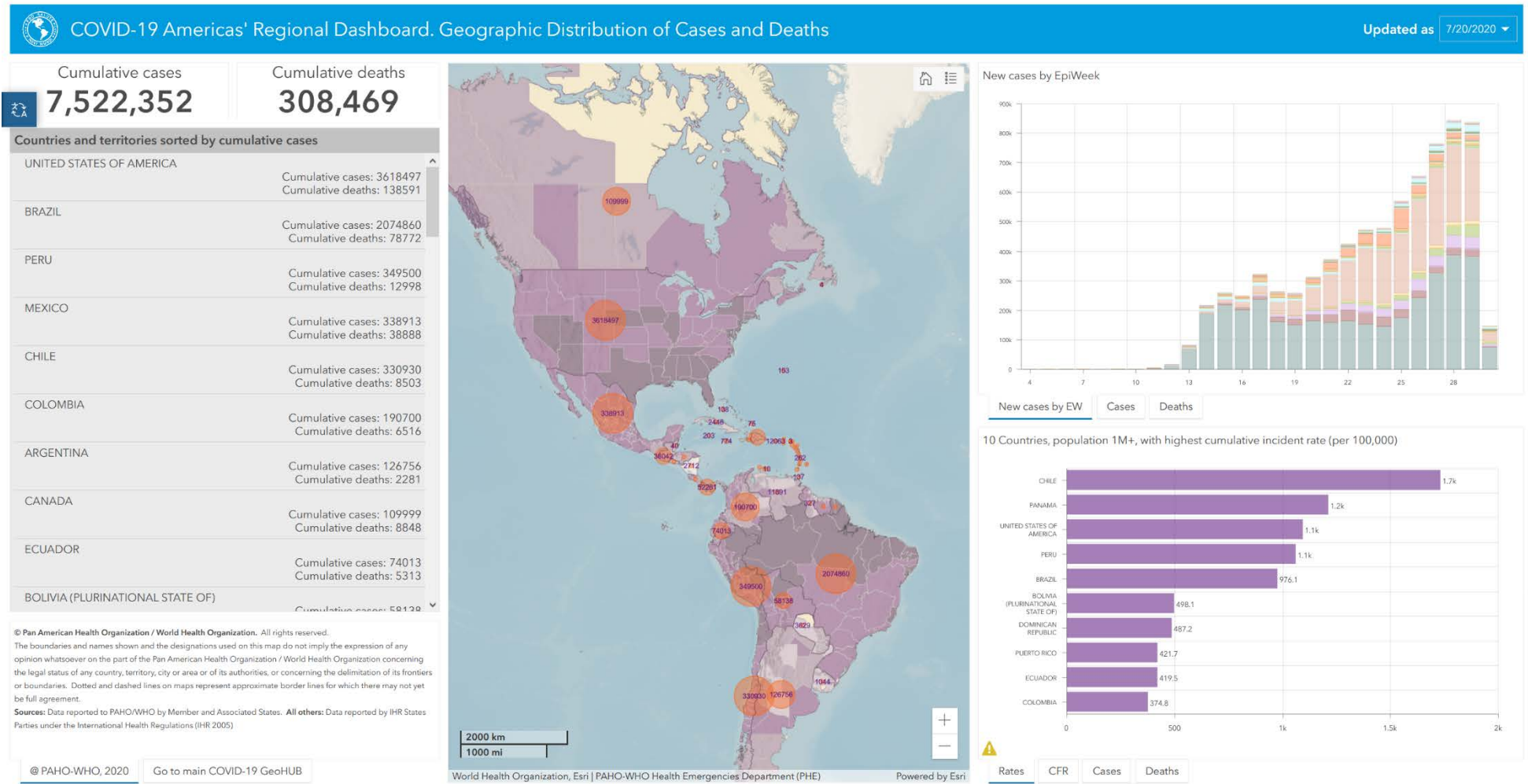
### US Data

More detail on page 6

### Riverside County Data

More detail on page 14





**PAHO Daily reported COVID-19 data**  
<https://ais.paho.org/phis/viz/COVID19Table.asp>

## News

### **Hong Kong tightens COVID-19 lockdown**

<https://www.aljazeera.com/news/2020/07/hong-kong-tightens-covid-19-lockdown-200720140717233.html>

### **First human trial of Oxford coronavirus vaccine shows promise**

<https://www.aljazeera.com/news/2020/07/human-trial-oxford-coronavirus-vaccine-shows-promise-200720140307414.html>

### **New Stimulus Talks Begin; Trump Aims To Cut Funds For Testing**

<https://patch.com/us/across-america/new-stimulus-talks-begin-trump-aims-cut-funds-testing>

### **Older Children Spread the Coronavirus Just as Much as Adults, Large Study Finds**

[https://www.nytimes.com/2020/07/18/health/coronavirus-children-schools.html?campaign\\_id=9&emc=edit\\_nn\\_20200719&instance\\_id=20443&nl=the-morning&regi\\_id=76804946&segment\\_id=33788&te=1&user\\_id=91f533accc3a77be937699f2e3c20fcf](https://www.nytimes.com/2020/07/18/health/coronavirus-children-schools.html?campaign_id=9&emc=edit_nn_20200719&instance_id=20443&nl=the-morning&regi_id=76804946&segment_id=33788&te=1&user_id=91f533accc3a77be937699f2e3c20fcf)

### **85 crew members aboard factory trawler in Unalaska test positive for COVID-19**

<https://www.adn.com/alaska-news/2020/07/19/85-crewmembers-aboard-seafood-ship-in-unalaska-test-positive-for-covid-19/>

### **Latest on COVID-19 in MN: Major spike in cases over weekend**

<https://www.mprnews.org/story/2020/07/20/latest-on-covid19-in-mn>

### **85 Infants Test Positive For Coronavirus In One Texas County**

<https://patch.com/texas/across-tx/85-infants-test-positive-coronavirus-texas-county>

### **LA 'On The Brink' Of New Shutdown Orders As Coronavirus Surges**

<https://patch.com/california/hollywood/la-brink-new-shutdown-orders-covid-19-surges>

### **AUSD to Open in Distance Learning in August**

[https://www.alameda.k12.ca.us/pf4/cms2/news\\_themed\\_display?id=1594980156563](https://www.alameda.k12.ca.us/pf4/cms2/news_themed_display?id=1594980156563)

### **Parasitic Worms In Humans Can Escape Detection: UC Riverside**

<https://patch.com/california/lakeelsinore-wildomar/s/h6m73/parasitic-worms-can-escape-detection-humans-uc-riverside>

### **One Good Thing**

- Stories about the kindness of strangers and individuals who sacrifice for others.  
<https://apnews.com/OneGoodThing> or <https://www.goodnewsnetwork.org/>

[13 Good News Stories: Piano Man Plays; The Great Kangaroo Chase](#)

[87 Sea Turtle Hatchlings Rescued from Storm Drain](#)

## Information

### WEBINAR: Surveillance for SARS-CoV-2 Using Wastewater A Leading-Edge Indicator

ORAU and The MITRE Corporation will host a webinar on the Surveillance for SARS-CoV-2 Using Wastewater on **July 21, 2020, 1:00 - 2:00 p.m. ET** Monitoring of wastewater for infectious pathogens is an established environmental surveillance technique being used successfully by the World Health Organization (WHO) to help eradicate polio. Early research indicates that SARS-CoV-2, the virus responsible for causing COVID-19, can be detected in the feces of infected individuals (including asymptomatic individuals).

This type of surveillance is particularly valuable in settings where groups of people are housed in congregate settings such as university campus dormitories, where recurrent universal diagnostic testing is cost-prohibitive, and where there is a need to protect vulnerable populations.

The presence of SARS-CoV-2 within the wastewater offers an opportunity to:

- Detect trends in disease burden within a population prior to changes in cases and deaths
- Identify the presence of the virus in an otherwise uninfected population
- Monitor the genetic evolution of the virus
- Estimate the prevalence of disease within a population at a given point in time

Register to attend the webinar at <https://www.orau.org/impact/webinar.html>.

### On Wednesday, July 22nd from 2:00 to 3:00 p.m. (ET), I will be presenting the special REMI webinar, "Re-opening Schools & Universities: Examining the Economic Effects using IQ+™,"

evaluates the effects of decreased economic activity resulting from school closures and state shutdowns continuing into the fall semester.

This webinar will also serve as the official launch of our new REMI IQ+ model that we designed to forecast the future of a region through quarterly economic projections and scenario analyses.

With IQ+, users can assess the employment and tax revenue impacts associated with re-opening various educational institutions, as well as identify potential policy interventions to implement in order to mitigate the losses related to schools remaining closed in September.

Register <https://register.gotowebinar.com/register/2918529779199087119>

## COVID-19 Maps & Visuals

- [Coronavirus COVID-19 global cases](#) (Johns Hopkins)
- [US spread of COVID-19 maps and analytics](#) (SharedGe0)
- [Novel coronavirus \(COVID-19\) outbreak timeline map](#) (HealthMap)
- [Novel coronavirus infection map](#) (University of Washington)
- [COVID-19 surveillance dashboard](#) (University of Virginia)
- [Novel coronavirus \(COVID-19\) situation dashboard](#) (WHO)
- [Coronavirus disease 2019 \(COVID-19\) in the US](#) (CDC)
- [Geographical distribution of COVID-19 cases worldwide](#) (ECDC)
- [COVID-19 coronavirus tracker](#) (Kaiser Family Foundation)
- [COVID-19 coronavirus outbreak](#) (Worldometer)
- [The COVID tracking project](#) (COVID Tracking)
- [Data visualization](#) (CDC)
- [Coronavirus: the disease Covid-19 explained](#) (*South China Morning Post*)
- [Mapping the novel coronavirus pandemic](#) (Esri StoryMaps)



# U.S. Data

## Covid-19 Case Cluster (past 48 hours)

<https://www.cdc.gov/covid-data-tracker/index.html>

### Social Impact COVID-19 Events in the United States

9 EVENTS  
Past 48 hours

Map of news reports related to social impact events resulting from the COVID-19 outbreak in the United States, such as school closures, localized outbreaks, state of emergency declarations, etc.

DATE RANGE

Past 48 hours

TYPE OF EVENT ?

COVID-19 Case Clusters

About this Map | Developed by HealthMap



# Trends in Number of COVID-19 Cases in the US Reported to CDC, by State/Territory

**USA**  
**3,698,161**  
**TOTAL CASES**  
CDC | Updated: Jul 19 2020 5:45PM

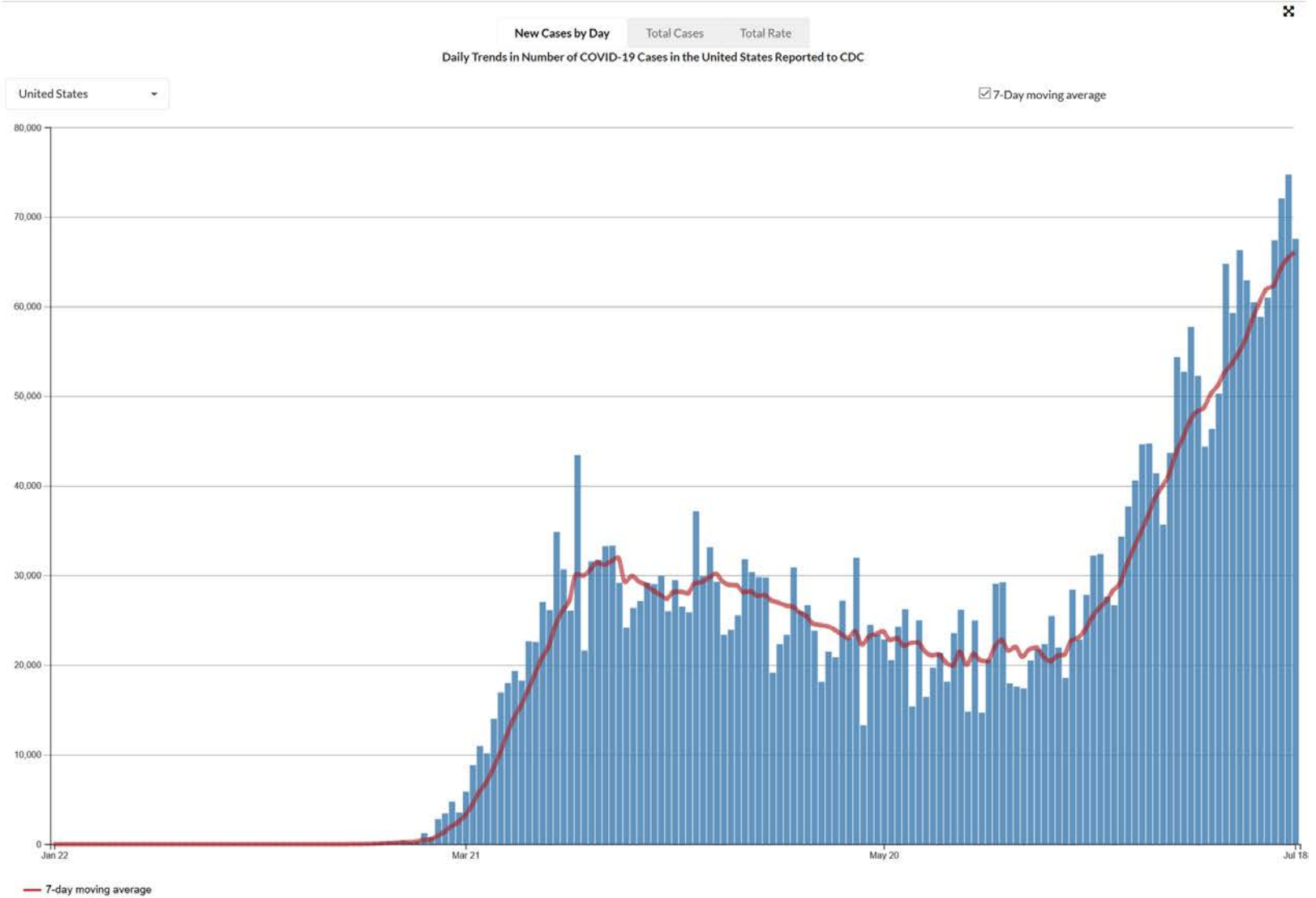
**USA**  
**139,659**  
**TOTAL DEATHS**  
CDC | Updated: Jul 19 2020 5:45PM

**USA**  
**1,128.3**  
**Cases per 100,000**  
**People**  
CDC | Updated: Jul 19 2020 5:45PM

**New Case Trends - United States**

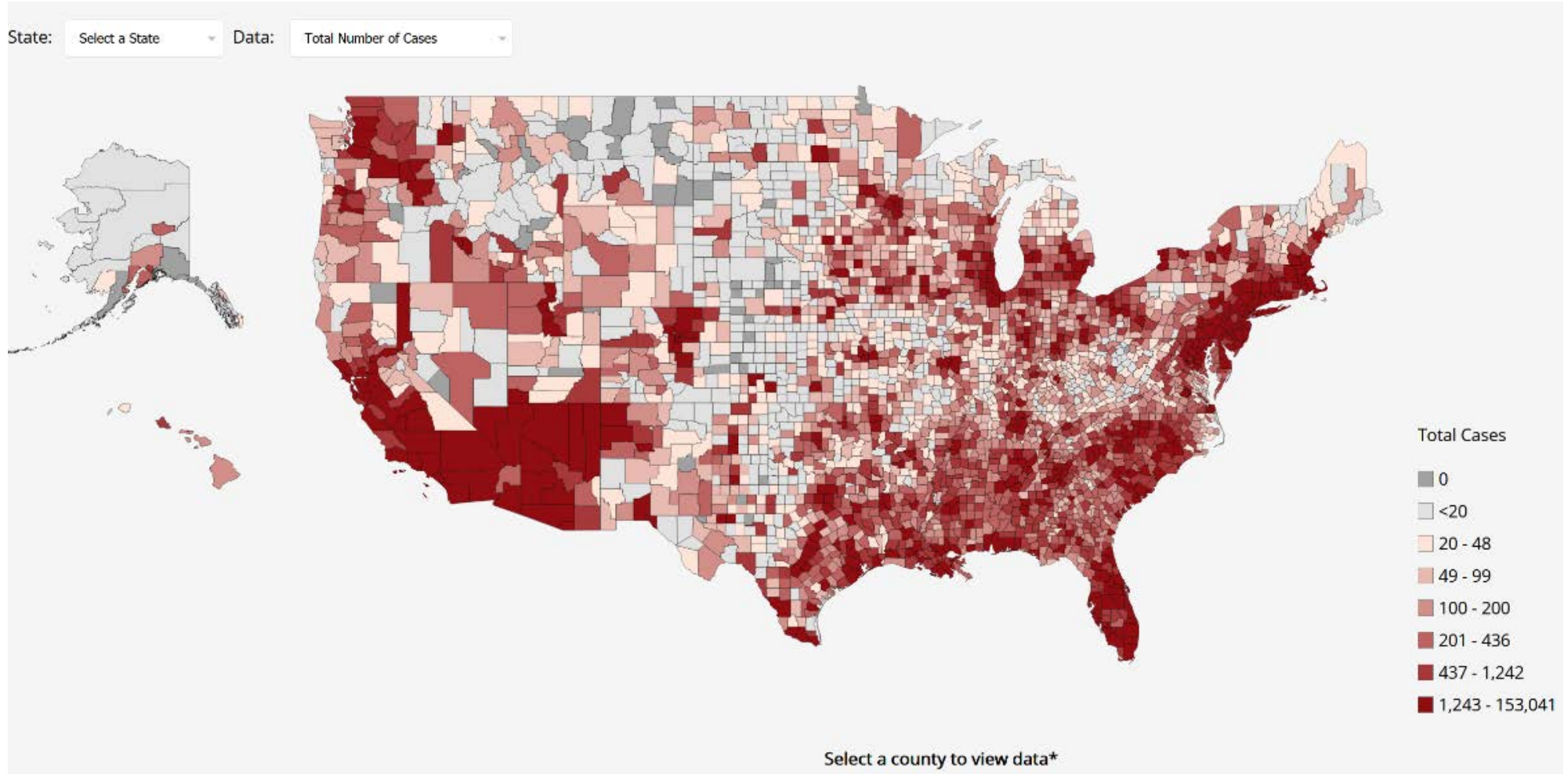
Date	New Cases	7-Day Moving Avg
Jul 18 2020	67574	66004
Jul 17 2020	74710	65339
Jul 16 2020	72045	64135
Jul 15 2020	67404	62308
Jul 14 2020	60971	61932
Jul 13 2020	58858	60408
Jul 12 2020	60469	58618
Jul 11 2020	62918	56317
Jul 10 2020	66281	54790
Jul 9 2020	59260	53567
Jul 8 2020	64771	52634
Jul 7 2020	50304	51146
Jul 6 2020	46329	50195
Jul 5 2020	44361	48671
Jul 4 2020	52228	48247

CDC | Updated: Jul 19 2020 5:45PM



# Cases By County (Total Cases)

<https://www.cdc.gov/covid-data-tracker/index.html#county-map>





## Cases By County (Total Cases)

County	Total Cases	Percent of State's Cases	Cases per 100,000	Total Deaths
■ Los Angeles, CA	153,041	40.1%	1,524	4,084
■ Cook, IL	98,292	61.2%	1,908	4,774
■ Maricopa, AZ	93,870	66.4%	2,093	1,444
■ Miami-Dade, FL	81,026	24%	2,982	1,274
■ Queens, NY	66,921	16.5%	2,969	7,128
■ Kings, NY	61,351	15.1%	2,397	7,199
■ Harris, TX	53,555	16.5%	1,136	526
■ Bronx, NY	48,715	12%	3,435	4,816
■ Nassau, NY	42,594	10.5%	3,139	2,192
■ Suffolk, NY	42,440	10.4%	2,874	1,993
■ Dallas, TX	39,191	12%	1,487	514
■ Broward, FL	38,131	11.3%	1,953	488
■ Westchester, NY	35,503	8.7%	3,670	1,437
■ New York, NY	29,675	7.3%	1,822	3,137
■ Riverside, CA	29,639	7.8%	1,200	587
■ Clark, NV	29,304	85%	1,293	527
■ Orange, CA	29,011	7.6%	914	494
■ Bexar, TX	28,633	8.8%	1,429	240
■ Wayne, MI	25,051	30.8%	1,432	2,780
■ Palm Beach, FL	25,045	7.4%	1,673	666
■ Middlesex, MA	24,809	21.9%	1,539	1,944

## Cases By County (Per Capita)

Cases By County				
County	Total Cases	Percent of State's Cases	Cases per 100,000	Total Deaths
■ Trousdale, TN	1,543	2.1%	13,674	<20
■ Lake, TN	699	0.9%	9,963	0
■ Lee, AR	859	2.6%	9,699	<20
■ Dakota, NE	1,869	8.4%	9,333	37
■ Buena Vista, IA	1,750	4.6%	8,919	<20
■ Lincoln, AR	1,118	3.4%	8,584	<20
■ Nobles, MN	1,704	3.7%	7,878	<20
■ East Carroll, LA	482	0.5%	7,025	<20
■ Colfax, NE	682	3%	6,368	<20
■ Ford, KS	2,053	9.3%	6,107	<20
■ Lowndes, AL	517	0.8%	5,316	25
■ McKinley, NM	3,743	22.4%	5,245	198
■ Seward, KS	1,105	5%	5,157	<20
■ Echols, GA	206	0.1%	5,142	0
■ Buffalo, SD	99	1.3%	5,046	<20
■ Texas, OK	1,007	4%	5,039	<20
■ Sevier, AR	846	2.6%	4,974	<20
■ Santa Cruz, AZ	2,305	1.6%	4,957	37
■ Galax, VA	300	0.4%	4,727	<20
■ Imperial, CA	8,531	2.2%	4,708	161
■ Chattahoochee, GA	494	0.4%	4,529	<20



# State Data

<https://covid19.ca.gov/>  
<https://update.covid19.ca.gov/#top>  
<https://www.cdph.ca.gov/Programs/CID/DCDC/Pages/Immunization/ncov2019.aspx#>

## Statewide industry guidance to reduce risk

<https://covid19.ca.gov/industry-guidance/#top>  
<https://www.cdph.ca.gov/Programs/CID/DCDC/Pages/Guidance.aspx>

## Open sectors in counties with variance

<https://covid19.ca.gov/roadmap-counties/#track-data>  
<https://covid19.ca.gov/roadmap-counties/>

## Data models

<https://covid19.ca.gov/data-and-tools/>

## Take the State survey

<https://www.surveymonkey.com/r/W56KTRS?source=covid>

# California COVID-19 By The Numbers

July 19, 2020

Numbers as of July 18, 2020

## CALIFORNIA COVID-19 SPREAD

**384,692 (+9,329)**

TOTAL CASES

### Ages of Confirmed Cases

- 0-17: 32,913
- 18-49: 231,171
- 50-64: 74,999
- 65+: 45,166
- Unknown/Missing: 443

### Gender of Confirmed Cases

- Female: 191,173
- Male: 191,472
- Unknown/Missing: 2,047

**7,685 (+90)**

Fatalities

### Hospitalizations

Confirmed COVID-19  
**6,899/1,921**  
 Hospitalized/in ICU

Suspected COVID-19  
**1,499/186**  
 Hospitalized/in ICU

For county-level  
 hospital data:  
[bit.ly/hospitalsca](http://bit.ly/hospitalsca)

Your actions **save lives.**

For county-level data:  
[data.chhs.ca.gov](http://data.chhs.ca.gov)  
[covid19.ca.gov](https://covid19.ca.gov)



## Cases and Deaths Associated with COVID-19

### by Age Group in California

July 18, 2020

Age Group	No. Cases	Percent Cases	No. Deaths	Percent Deaths	Percent CA Population
<5	7,184	1.9	0	0.0	5.8
5-17	25,729	6.7	0	0.0	16.7
18-34	134,490	35.0	94	1.2	24.3
35-49	96,681	25.1	411	5.4	19.3
50-59	54,891	14.3	736	9.7	12.5
60-64	20,108	5.2	570	7.5	5.9
65-69	13,987	3.6	721	9.5	5.0
70-74	9,942	2.6	828	10.9	4.1
75-79	6,972	1.8	903	11.9	2.7
80+	14,265	3.7	3,357	44.1	3.9
missing	443	0.1	0	0.0	0.0
Total	384,692	100.0	7,620	100.0	100.0



# California Statistics

Total Population: 40,129,160

**118,707**

New Cases (Last 14 Days)

295.8 Per 100K

384,692 Total Cases

**1,354**

New Deaths (Last 14 Days)

3.4 Per 100K

7,685 Total Deaths

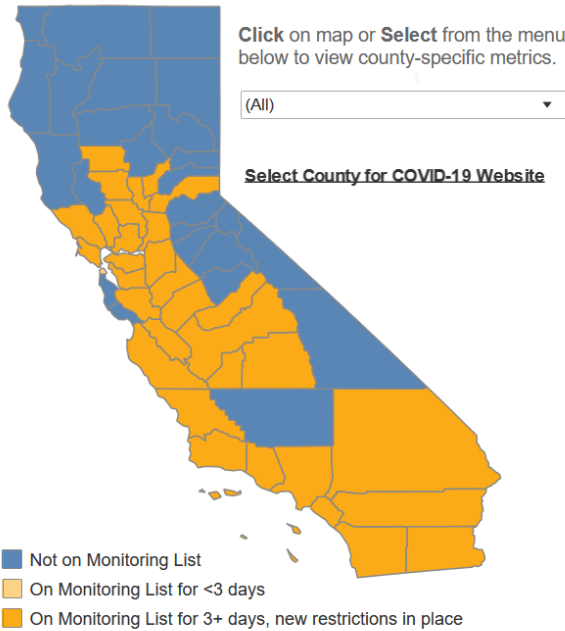
**1,606,714**

Tests Reported (Last 14 Days)

7.4% Test Positivity

2.9 Daily per 1,000 Residents

6,286,852 Total Tests Reported



## Cases by County

County	Total Cases	Percent of State's Cases	Cases per 100,000	Total Deaths
Los Angeles	153,041	40.1%	1,524	4,084
Riverside	29,639	7.8%	1,200	587
Orange	29,011	7.6%	914	494
San Bernardino	23,566	6.2%	1,081	328
San Diego	23,114	6.1%	692	478
Fresno	9,954	2.6%	996	100
Alameda	9,110	2.4%	545	162
Imperial	8,531	2.2%	4,708	161
San Joaquin	7,925	2.1%	1,040	83
Kern	7,728	2%	858	105
Santa Clara	7,300	1.9%	379	177
Sacramento	6,693	1.8%	431	96
Tulare	6,683	1.8%	1,434	165
Stanislaus	6,220	1.6%	1,130	63
Contra Costa	5,538	1.5%	480	98
Ventura	5,451	1.4%	644	56
San Francisco	5,116	1.3%	580	52
Santa Barbara	5,001	1.3%	1,120	32
San Mateo	4,465	1.2%	582	114
Marin	3,839	1%	1,483	42
Monterey	3,228	0.8%	744	<20
Kings	3,209	0.8%	2,098	41
Solano	2,554	0.7%	571	31
Merced	2,403	0.6%	865	<20
Sonoma	2,068	0.5%	418	<20
Placer	1,280	0.3%	321	<20
Madera	1,214	0.3%	772	<20
San Luis Obispo	1,213	0.3%	428	<20
Yolo	1,123	0.3%	509	31
Santa Cruz	772	0.2%	283	<20
Napa	598	0.2%	434	<20
Butte	522	0.1%	238	<20
Sutter	502	0.1%	518	<20
San Benito	437	0.1%	696	<20
El Dorado	394	0.1%	204	0
Yuba	257	0.1%	327	<20
Shasta	235	0.1%	130	<20
Glenn	214	0.1%	754	<20
Nevada	204	0.1%	205	<20
Mendocino	194	0.1%	224	<20
Humboldt	181	0.0%	134	<20
Colusa	173	0.0%	803	0
Lake	140	0.0%	217	<20
Tehama	134	0.0%	206	<20
Calaveras	87	0.0%	190	0
Tuolumne	85	0.0%	156	<20
Mono	76	0.0%	526	<20
Del Norte	66	0.0%	237	0
Amador	51	0.0%	128	0
Siskiyou	44	0.0%	101	0
Inyo	37	0.0%	205	<20
Lassen	36	0.0%	118	0
Mariposa	36	0.0%	209	<20
Plumas	23	0.0%	122	0
Alpine	<20	Not Calculated	Not Calculated	0
Sierra	<20	Not Calculated	Not Calculated	0
Trinity	<20	Not Calculated	Not Calculated	0
Modoc	0	Not Calculated	Not Calculated	0





# RIVERSIDE COUNTY COVID-19 CASES

## DATA SUMMARY

Jul 17, 2020

TOTAL CASES

28,695

NEW CASES

518

TOTAL DEATHS

587

NEW DEATHS

2

TOTAL RECOVERED

10,416

CURRENT HOSPITALIZED  
(includes ICU)

535

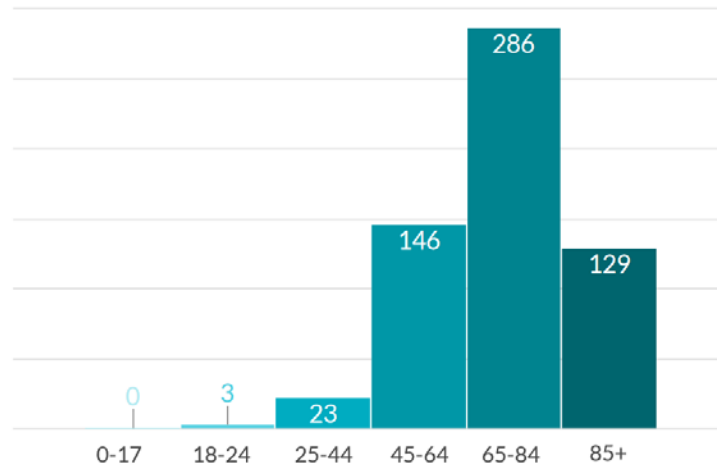
CURRENT ICU

130

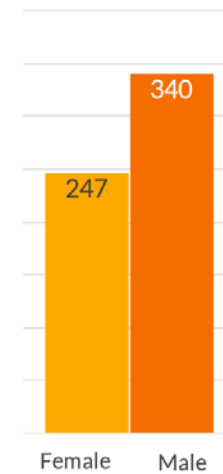
DOUBLING TIME

24.3

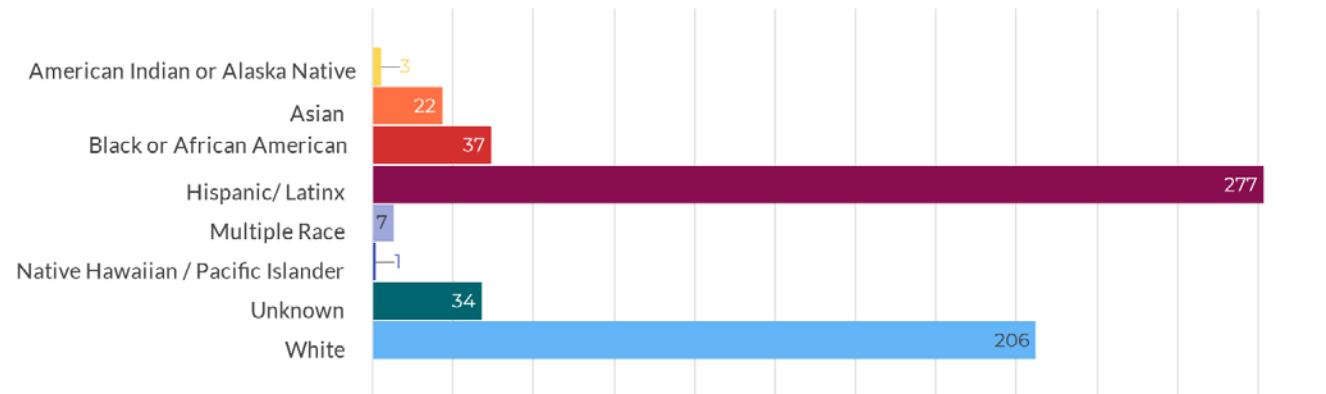
COVID-19 Deaths by Age Group



COVID-19 Deaths by Sex



COVID-19 Deaths by Race/Ethnicity



Date	American Indian or Alaska Native % Death	Asian % Death	Black or African American % Death	Hispanic/Latinx % Death	Multiple Race % Death	Native Hawaiian/Pacific Islander % Death	Unknown % Death	White % Death
Jul 17, 2020	0.51	3.75	6.35	47.27	1.19	0.17	5.8	35.15

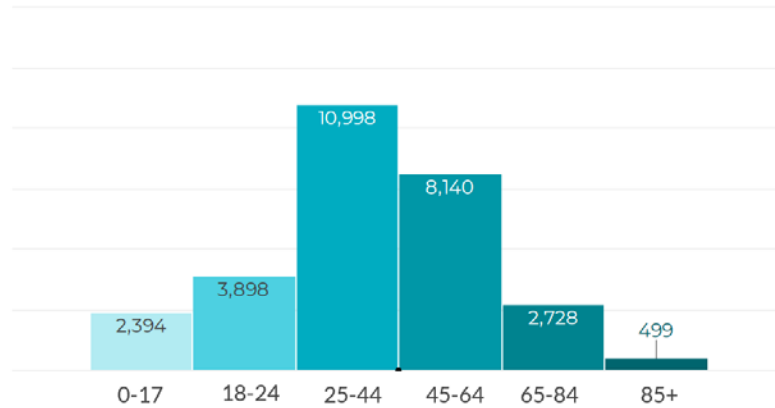


# RIVERSIDE COUNTY COVID-19 CASES

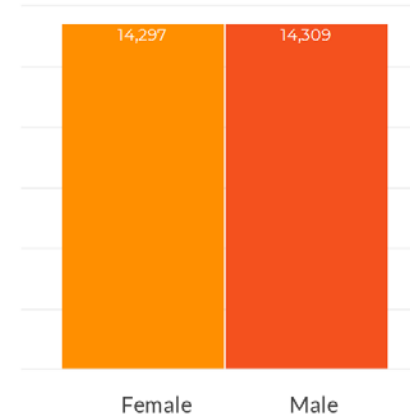
## DATA SUMMARY

Jul 17, 2020 - : ▾

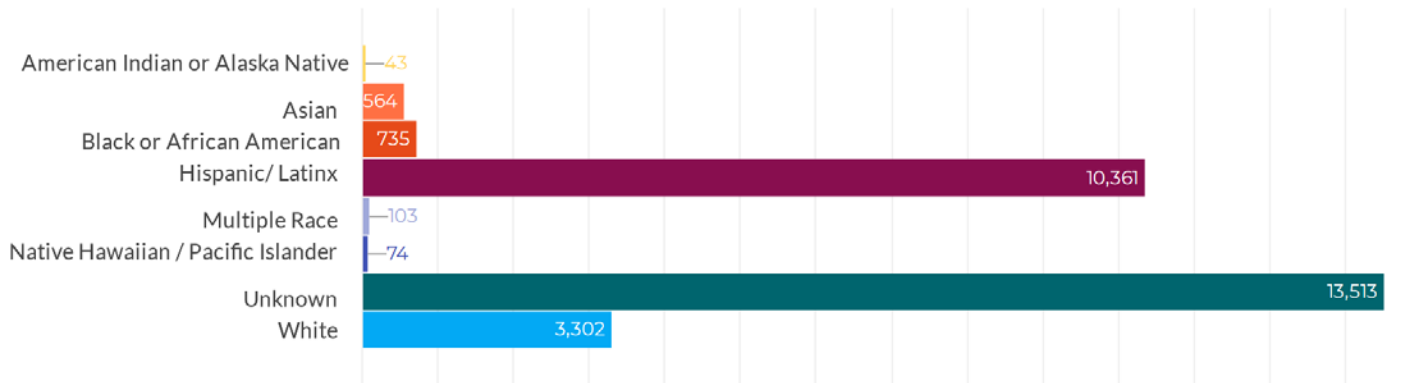
COVID-19 Cases by Age Group



COVID-19 Cases by Sex



COVID-19 Cases by Race/Ethnicity



Date	American Indian or Alaska Native % Cases	Asian % Cases	Black or African American % Cases	Latinx % Cases	Multiple Race % Cases	Native Hawaiian/ Pacific Islander % Cases	Unknown % Cases	White % Cases
Jul 17, 2020	0.1	2	2.6	36.1	0.4	0.3	47.1	11.5



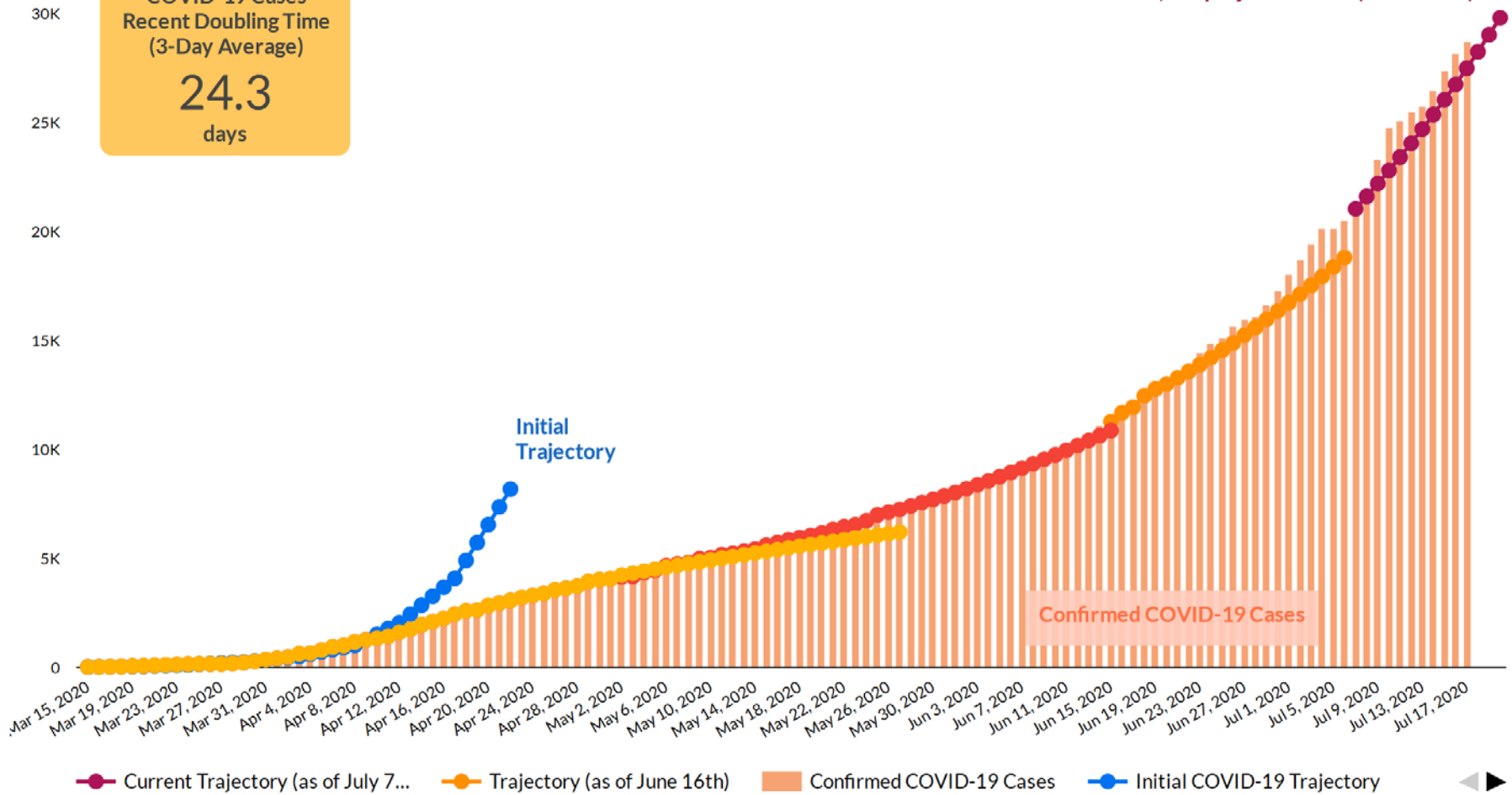


# RIVERSIDE COUNTY COVID-19 TRAJECTORY

Jul 17, 2020 - Jul 17, 2020

**COVID-19 Cases**  
Recent Doubling Time  
(3-Day Average)  
**24.3**  
days

**Trajectory for July 20th:**  
29,809 projected cases (cumulative)



**MAJOR EVENTS:**

March 13th: Public Health Officer orders school closure  
 March 19th: California Governor orders stay at home  
 April 4th: Public Health Officer orders stay at home and cover the face  
 April 18th: Asymptomatic testing begins

May 1st: Riverside County reverts to State orders  
 May 8th: Riverside County begins Phase 2  
 May 22nd: Riverside County accelerates to Phase 2.5  
 May 25: Memorial Day  
 June 1: Protest Downtown Riverside

June 29th: Bar closures ordered in Riverside County  
 July 1st: Indoor dining and other select indoor venues closed

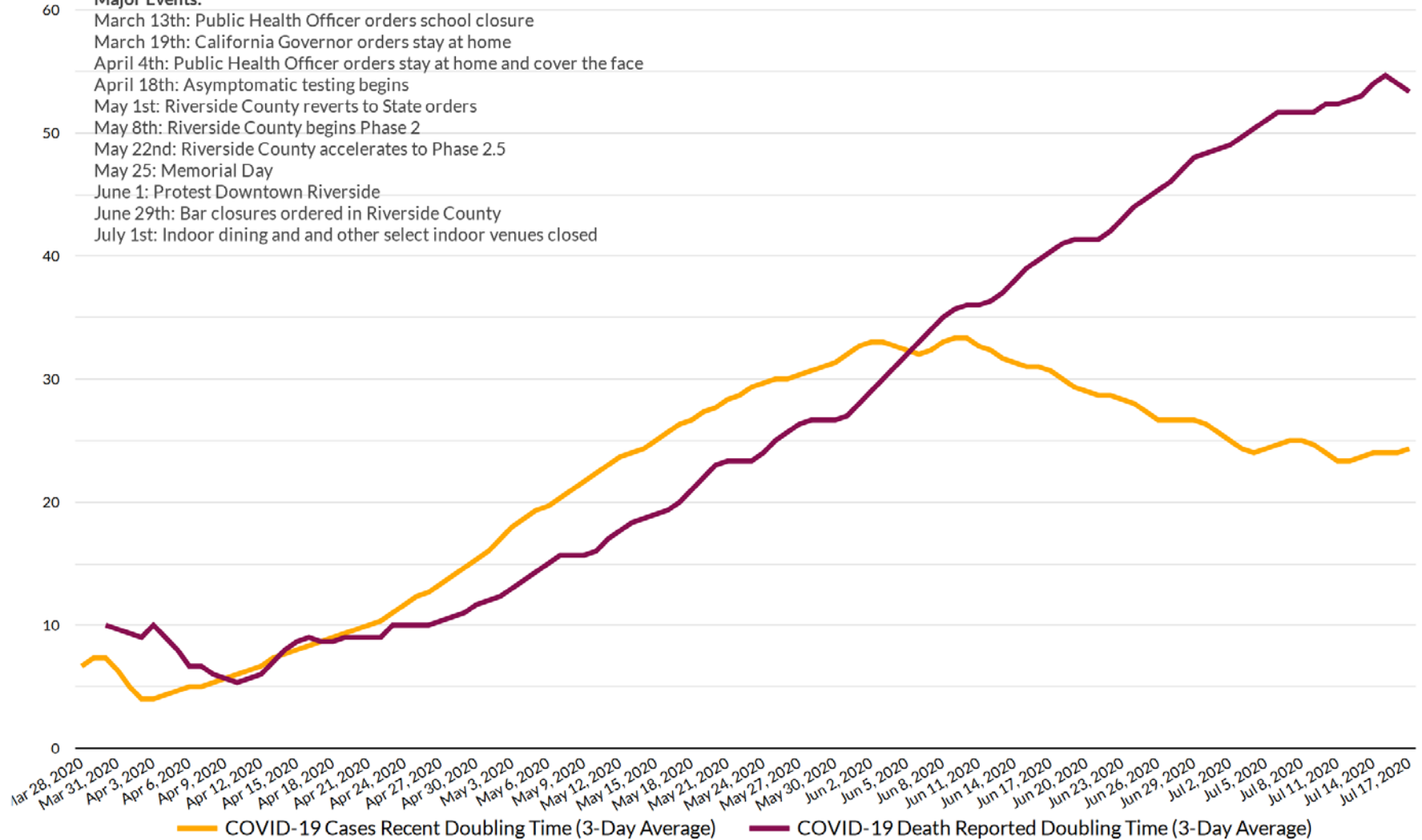


# RIVERSIDE COUNTY COVID-19 DOUBLING TIME

Mar 28, 2020 - Jul 17, 2020

## Major Events:

- March 13th: Public Health Officer orders school closure
- March 19th: California Governor orders stay at home
- April 4th: Public Health Officer orders stay at home and cover the face
- April 18th: Asymptomatic testing begins
- May 1st: Riverside County reverts to State orders
- May 8th: Riverside County begins Phase 2
- May 22nd: Riverside County accelerates to Phase 2.5
- May 25: Memorial Day
- June 1: Protest Downtown Riverside
- June 29th: Bar closures ordered in Riverside County
- July 1st: Indoor dining and other select indoor venues closed



\*Based on case report date and death report date



# RIVERSIDE COUNTY COVID-19 CASES

by lab specimen collection date

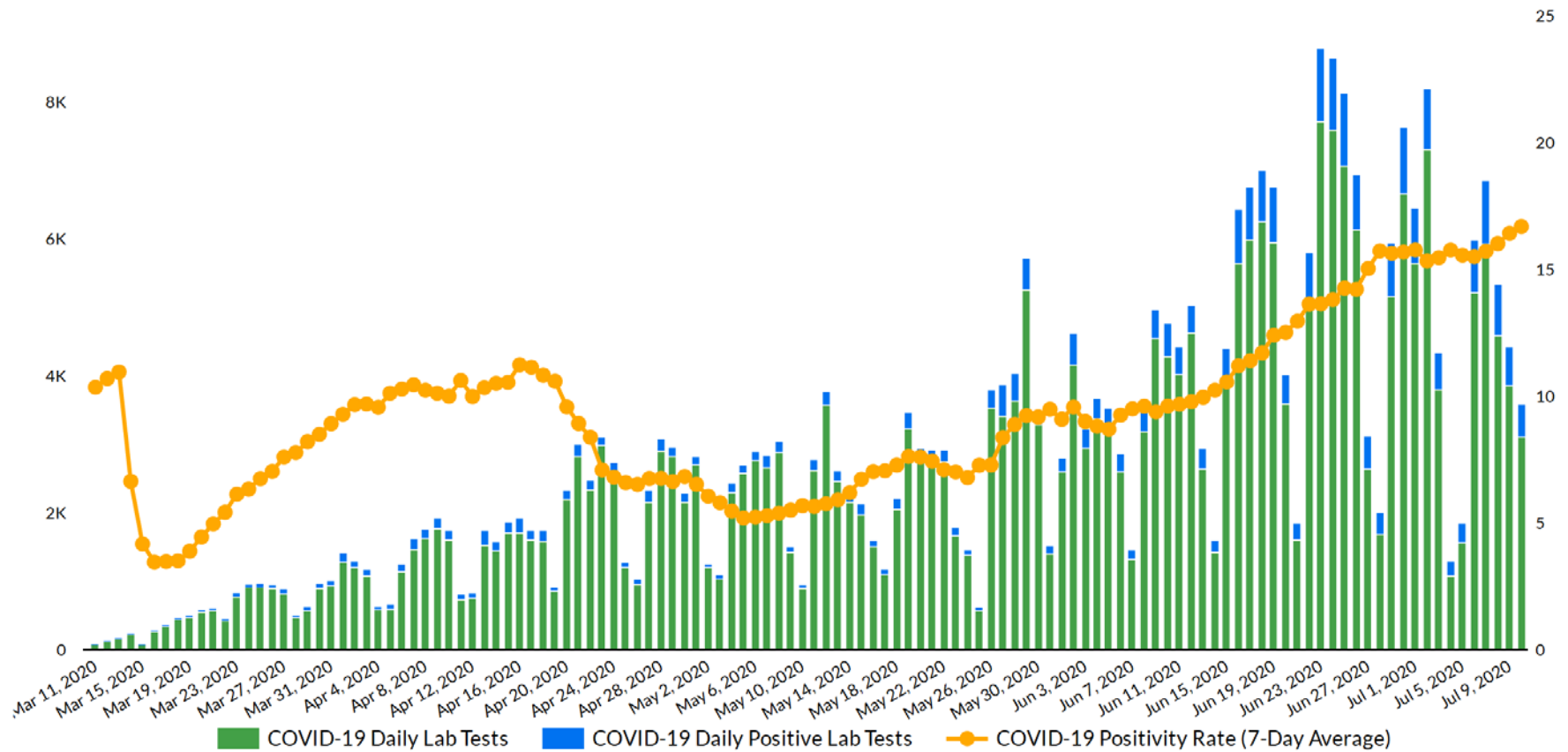
Positivity rate is now determined using specimen collection date with a 7-day lag to align with State methodology

**POSITIVE\***  
**33,130**

**TESTS RESULTED\***  
**307,617**

10K

Date	Recent Positivity Rate
Jul 10, 2020	16.7
Jul 9, 2020	16.4
Jul 8, 2020	16.0



\*Based on lab specimen collection date


\*Numbers are based on lab reporting and may slightly differ from confirmed case counts

# Weather

**COVID-19  
Weather  
Support**

**Issued:**  
**1100 AM July 19 2020**

NATIONAL WEATHER SERVICE  
SAN DIEGO, CA



**IMPACT SCALE**

None Minor Moderate High Extreme

**Resources**

- <https://www.weather.gov/spot/>
- <https://inws.ncep.noaa.gov>
- <https://www.wrh.noaa.gov/sgx/event/dsstable.php>

**(858) 675 - 8705**  
**(24/7, Restricted)**

**Weather.gov/SanDiego**

7-day Forecast for Counties in far Southwest CA					
Period July 19 - July 26 (24-hr)	Orange	SW San Bernardino	All Deserts	Western Riverside	San Diego
Today	None	Warm Breezy	Very Warm Windy	Warm	None
Monday	None	Warm	Very Warm	Warm	None
Tuesday	None	Warm	Warm Breezy	Warm	None
Wednesday	None	None	Warm Windy	None	None
Thursday	None	None	Warm Breezy	None	None
Friday	None	None	Warm Breezy	None	None
Saturday	None	None	Warm	None	None
Sunday	None	None	Warm	None	None

**Forecast Discussion**

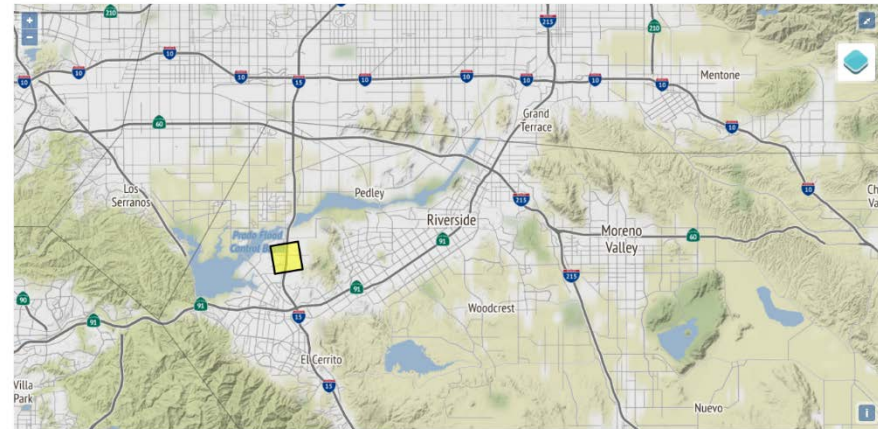
Warm temperatures continue into Tuesday with high temperatures ranging 2-6 degrees above normal for all deserts and inland areas. Moderate wind will occur in the passes and deserts through early Monday. A change in the weather pattern will develop during the middle of the week with a weak upper-level trough moving across the West Coast. This will bring windy conditions to the deserts during Tuesday night and Wednesday. Starting Wednesday, high temperatures will return to slightly below averages for inland areas and near normal for the coast. This will also keep breezy conditions in the mountain passes and deserts each day.

Latest hazard threat table: <https://www.wrh.noaa.gov/sgx/event/dsstable.php>



**IDSS Point Forecasts**

Search Map...



**Table updated: 247 am PDT Mon. 7/20/2020**

[Click for Text Forecast](#)

[SGX Forecast Discussion](#)

1 miles WSW of Norco, CA

**Weekly Summary**

	<b>Mon Jul 20</b>	<b>Tue Jul 21</b>	<b>Wed Jul 22</b>	<b>Thu Jul 23</b>	<b>Fri Jul 24</b>	<b>Sat Jul 25</b>	<b>Sun Jul 26</b>	<b>Mon Jul 27</b>
<b>Max Temp, °F</b>	88	90	86	85	87	90	92	92
<b>Max Heat Index, °F</b>	87	90	86	84	86	89	90	80
<b>Min Temp, °F</b>	63	63	63	61	60	62	63	64
<b>Max Wind, mph</b>	14	16	15	14	14	14	14	5
<b>Min Wind, mph</b>	3	1	1	2	1	1	1	1
<b>Max Wind Gust, mph</b>	22	25	24	22	23	22	22	9
<b>Max Cloud Cover, %</b>	5	72	72	43	21	4	4	4
<b>Min Cloud Cover, %</b>	4	5	5	4	3	3	3	4
<b>Max Prob. of Precip., %</b>	0	0	0	0	0	0	0	0
<b>Max RH, %</b>	71	93	92	90	94	89	84	78
<b>Min RH, %</b>	38	38	42	40	38	35	31	46
<b>Max Dew Point, °F</b>	60	62	62	59	59	59	58	58
<b>Min Dew Point, °F</b>	59	60	59	58	57	57	56	57
<b>Min Snow Level, x1000ft.</b>	11.1	10.9	10.5	10.5	10.4	10.9	11.4	11.8

## Hourly Table

Day of week:	Monday 7/20													Tuesday		
Time:	10AM	11AM	12PM	1PM	2PM	3PM	4PM	5PM	6PM	7PM	8PM	9PM	10PM	11PM	12AM	1AM
Weather:	☀	☀	☀	☀	☀	☀	☀	☀	☀	☁	☁	☁	☁	☁	☁	☁
Temperature (°F):	75	80	84	86	87	87	88	86	84	80	77	74	72	70	68	67
Heat Index, °F:	75	81	83	85	87	86	87	86	84	81	77	74	72	70	68	67
Wind Speed (mph):	3	7	8	9	13	13	13	14	14	13	9	8	7	5	3	2
Wind Gust (mph):	8	13	15	16	21	22	22	22	22	21	16	15	13	9	8	7
Wind Direction (°):	280	270	270	270	270	270	270	270	270	270	280	290	290	300	290	300
Wind Direction:	➔	➔	➔	➔	➔	➔	➔	➔	➔	➔	➔	➔	➔	➔	➔	➔
Prob. of Precip. (%):	0	0	0	0	0	0	0	0	0	0	0	0	0	0	0	0
Prob. of Thunder (%):	-	-	-	-	-	-	-	-	-	-	-	-	-	-	-	-
Precip. Amount (in.):																
Snow (in.):																
Ice (in.):	-	-	-	-	-	-	-	-	-	-	-	-	-	-	-	-
Dew Point (°F):	60	59	59	59	59	59	59	59	59	59	59	60	60	60	60	60
RH (%):	59	50	44	40	38	38	38	40	43	48	54	60	66	71	76	80
Sky Cover (%):	4	4	4	4	4	4	4	4	4	4	4	4	4	5	5	5
Snow Level (x1000 ft.):	11.1	11.1	11.1	11.1	11.1	11.1	11.1	11.6	11.6	11.6	11.6	11.6	11.6	12.2	12.2	12.2

# Tropical Outlook – Atlantic



## **Disturbance 1** (as of 8:00 a.m. ET)

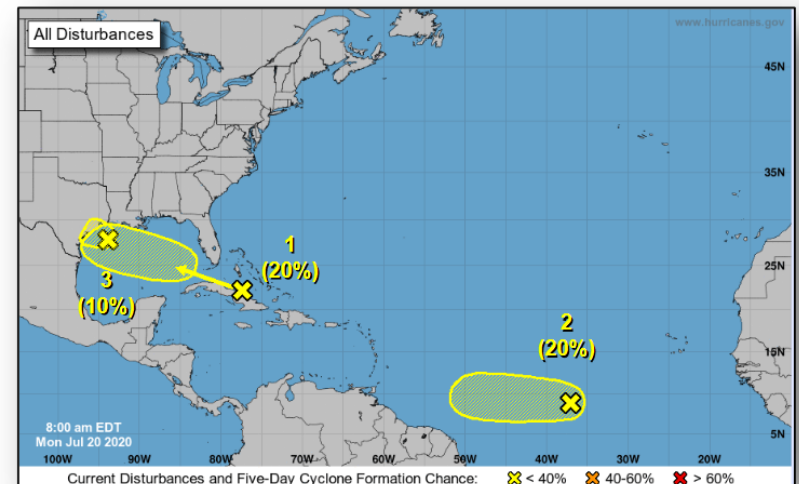
- Located over the Bahamas, central and eastern Cuba, and adjacent Atlantic waters
- Expected to move WNW through the Straits of Florida today, over the southeastern Gulf of Mexico by Tuesday, across the central Gulf on Wednesday, and reach the northwestern Gulf on Thursday
- Could become a little more conducive for development once it reaches the Gulf of Mexico
- Formation chance through 48 hours: Low (10%)
- Formation chance through 5 days: Low (20%)

## **Disturbance 2** (as of 8:00 a.m. ET)

- 1,000 miles WSW of Cabo Verde Islands
- Moving W at 10-15 mph
- Expected to be marginally conducive for development during the next few days
- Formation chance through 48 hours: Low (20%)
- Formation chance through 5 days: Low (20%)

## **Disturbance 3** (as of 8:00 a.m. ET)

- Located over northwestern Gulf of Mexico
- Little additional development is expected before it moves inland over Texas tonight or Tuesday
- Formation chance through 48 hours: Low (10%)
- Formation chance through 5 days: Low (10%)



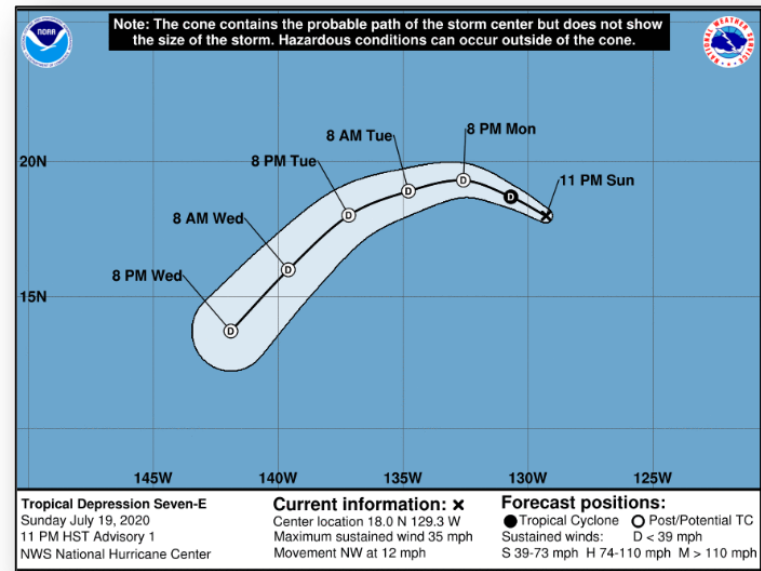
# Tropical Outlook – Eastern Pacific



FEMA

## **Tropical Depression Seven-E** (Advisory #1 as of 5:00 a.m. ET)

- 1,300 miles WSW of the southern tip of the Baja California peninsula
- Moving NW at 12 mph
- Maximum sustained winds 35 mph
- Little change in strength is forecast during the next 48 hours
- Expected to be a short-lived tropical cyclone that will degenerate into a remnant low by Tuesday morning

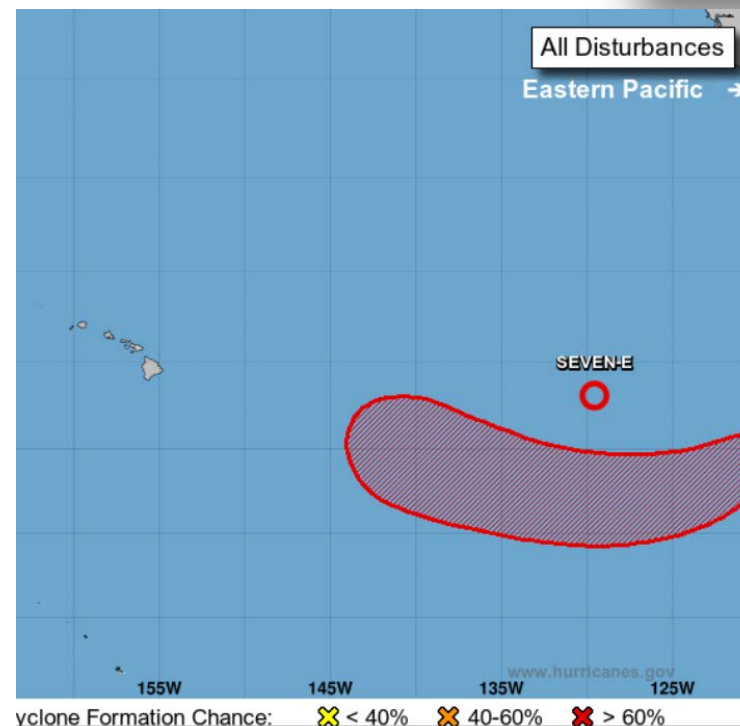
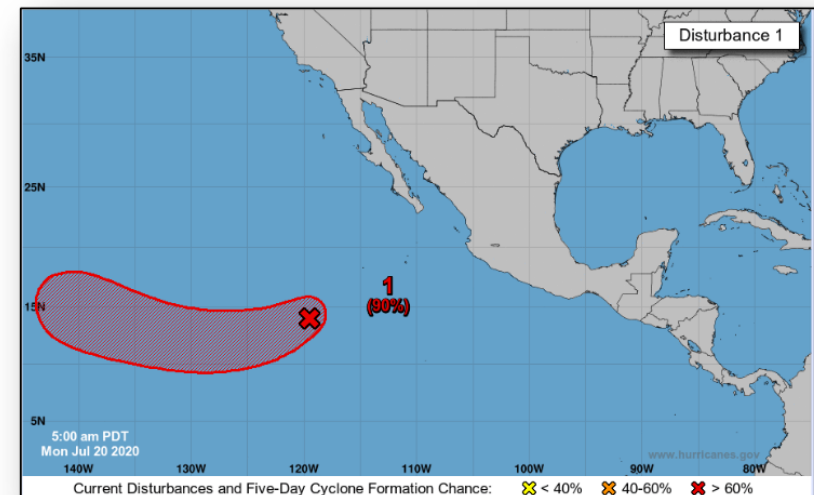


# Tropical Outlook – Eastern Pacific



## **Disturbance 1** (as of 8:00 a.m. ET)

- 850 miles SW of the southern tip of the Baja California peninsula
- Moving WSW and then W at 10-15 mph
- Conditions are conducive for additional development
- Tropical depression or tropical storm is likely to form during the next day or two
- Formation chance through 48 hours: High (70%)
- Formation chance through 5 days: High (90%)





# Severe Weather Outlook

