



****Extraordinary Assumptions:** There are a lot of different data sources in this report not all of them match but aid to provide an overall picture of the current situation. COVID-19 Data Source Comparison - https://covid-19.splunkforgood.com/covid_19_datasource_comparison

Daily Situation Summary

Tuesday, July 14, 2020

As of 10:00 AM

COVID-19 by the Numbers

07/14/2020

	Riverside	Imperial	Kern	Los Angeles	Orange	San Bernardino	San Diego	San Luis Obispo	Sana Barbra	Ventura	California	United States	Global
Total Cases	26,404	6,999	6,662	133,830	25,399	19,042	19,929	972	4,353	4,724	329,162	3,296,599	12,929,306
New Cases	410	115	153	3,351	969	135	558	42	70	179	8,358	60,469	160,999
Cases Per Capita	1,108	3,884	754	1,325	803	892	603	345	981	557	841	999	169
Recovered	<u>9,711</u>	<u>6,882</u>	<u>4,229</u>	<u>Not Reported</u>	<u>10,554</u>	<u>10,836</u>	<u>Not Reported</u>	<u>Not Reported</u>	<u>3,780</u>	<u>2,298</u>	<u>89,112</u>	<u>1,550,471</u>	<u>7,767,694</u>
Total Deaths	537	135	97	3,809	423	306	422	4	31	53	7,040	134,884	569,738
New Deaths	0	0	0	16	2	2	0	0	0	0	23	312	3,084
Deaths Per Capita	22.53	74.91	10.98	37.72	13.37	14.33	12.78	1.42	6.99	6.25	17.98	40.88	7.43
% of State's Cases	8.02%	2.13%	2.02%	40.66%	7.72%	5.78%	6.05%	0.30%	1.32%	1.44%	9.98%	25.50%	
Currently in Hospitals	635	73	255	2,773	758	669	467	13	84	73	7,895		
Total Hospital Beds	4,062	298	1,822	23,868	7,401	4,838	6,398	459	763	298	80,753		
Currently in ICU	139	17	57	565	235	166	148	4	22	139	1,833		
ICU Beds Available	186	9	86	1,502	443	177	370	42	57	186	4,160		
Case Fatality Rate	2.0%	1.9%	1.5%	2.8%	1.7%	1.6%	2.1%	0.4%	0.7%	1.1%	2.1%	4.1%	4.4%
Population*	2,383,286	180,216	883,053	10,098,052	3,164,182	2,135,413	3,302,833	281,455	443,738	848,112	39,148,760	329,937,835	7,663,041,000
% of Population	6.09%	0.46%	2.26%	25.79%	8.08%	5.45%	8.44%	0.72%	1.13%	2.17%	0.10%	0.0430%	

Sources: CDPH, WHO, CDC

The date for which case statistics and hospital data were reported. Hospital COVID data are self-reported through a portal managed by the California Hospital Association and pulled at 2pm. COVID case statistics are reported by local health departments to CaREDIE and are pulled at 2pm. Hospital data and case statistics are integrated by the California Department of Technology and made available through the Open Data Portal the following morning.

*California-Demographics.com is made by Cubit – a demographic data provider & census.gov

News

More detail on page 2

US Data

More detail on page 7

Riverside County Data

More detail on page 10

Information

More detail on page 6

State Data

More detail on page 9

Weather

More detail on page 18

News

Canada-US border expected to remain closed until at least mid-August

- The US-Canada border is expected to remain closed until at least Aug. 21
- There will be stepped-up enforcement and surveillance at most Canadian land borders in the coming weeks.
- By mutual agreement, the US-Canada border has been closed to all non-essential traffic since March.
- The sources spoke on the condition of anonymity, as they are not authorized to speak publicly on the matter. Canadian Prime Minister Justin Trudeau is expected to formally announce the decision later this week.
- President Trump and Prime Minister Justin Trudeau discussed the matter briefly during a phone call Monday morning, according to Trudeau's office.
- Also on Monday, Trudeau said Canada recognizes that the US coronavirus pandemic is a "complex" situation.
- "Every month we have been able to extend the border closures to all but essential goods and services and those discussions are ongoing with the United States right now as we are a week from the next deadline for closures. We're going to continue to work hard to keep Canadians safe and to keep our economies flowing and we will have more to say later this week I'm sure," Trudeau said during a press conference Monday.
- About the current closure: Truck drivers, healthcare workers, flight crews and others including most recently sports professionals, are currently exempt from Canada's mandatory 14-day quarantine.

https://www.cnn.com/world/live-news/coronavirus-pandemic-07-14-20-intl/h_3966be89cb400df1a8b75e26d8f2d4bd

Hong Kong Disneyland shutting down again this week

- Hong Kong Disneyland theme park will close down again because of the coronavirus pandemic, the company announced Monday.
- "As required by the government and health authorities in line with prevention efforts taking place across Hong Kong, Hong Kong Disneyland will temporarily be closed from July 15," a Walt Disney Co. spokesperson said. The resort's hotels will remain open at "adjusted levels of service," the spokesperson said.
- Hong Kong Disneyland's second shutdown comes amid Walt Disney World's phased reopening of its theme parks. Magic Kingdom and Disney's Animal Kingdom parks reopened to the public amid new restrictions and attendance capacity on Saturday; Epcot and Disney's Hollywood Studios are scheduled to reopen Wednesday.
- Disney's theme parks in Shanghai and Japan are open, but its parks in California remain shuttered. The Downtown Disney District, a shopping and entertainment complex adjacent to the California attractions, started reopening last week.

<https://www.orlandosentinel.com/travel/attractions/the-daily-disney/os-et-hong-kong-disneyland-closing-again-20200713-wxgdu2lzzjgxxhzusgmu245ty4-story.html>

NIH Study: Placenta lacks major molecules used by SARS-CoV-2 virus to cause infection

- NIH study may help explain why the virus has rarely been found in fetuses or newborns of women with COVID-19.
- The placental membranes that contain the fetus and amniotic fluid lack the messenger RNA (mRNA) molecule required to manufacture the ACE2 receptor, the main cell surface receptor used by the SARS-CoV-2 virus to cause infection, according to a study by researchers at the National Institutes of Health. Their findings appear in the journal eLife.

- These placental tissues also lack mRNA needed to make an enzyme, called TMPRSS2, that SARS-CoV-2 uses to enter a cell. Both the receptor and enzyme are present in only miniscule amounts in the placenta, suggesting a possible explanation for why SARS-CoV-2 has only rarely been found in fetuses or newborns of women infected with the virus, according to the study authors.
- the placenta contains molecules that previous studies have suggested as potential routes for SARS-CoV-2 infection, including the CD147 receptor and the enzymes cathepsin L and Furin. They also detected in placental and membrane tissue a type of macrophage (immune cell) that has the ACE2 receptor. However, they noted that there is little evidence showing that infected macrophages could spread the SARS-CoV-2 virus to the placenta, membranes and fetus in normal pregnancy.
- Finally, the researchers found that the placenta contains large amounts of receptors used for infection by Zika virus and cytomegalovirus, which are both known to carry serious health risks when passed from a woman to her fetus during pregnancy.
<https://www.nih.gov/news-events/news-releases/placenta-lacks-major-molecules-used-sars-cov-2-virus-cause-infection>

Study in Primates Finds Acquired Immunity Prevents COVID-19 Reinfections

- There have been rare reports of people recovering from infection with SARS-CoV-2, the novel coronavirus that causes COVID-19, only to test positive a second time. Such results might be explained by reports that the virus can linger in our systems. Yet some important questions remain: Is it possible that people could beat this virus only to get reinfected a short time later? How long does immunity last after infection? And what can we expect about the duration of protection from a vaccine?
- A recent study of rhesus macaques, which are among our close primate relatives, offers relevant insights into the first question. In a paper published in the journal Science, researchers found that after macaques recover from mild SARS-CoV-2 infection, they are protected from reinfection—at least for a while.
- In work conducted in the lab of Chuan Qin, Peking Union Medical College, Beijing, China, six macaques were exposed to SARS-CoV-2. Following infection, the animals developed mild-to-moderate illness, including pneumonia and evidence of active infection in their respiratory and gastrointestinal tracts. Twenty-eight days later, when the macaques had cleared the infection and started recovering, four animals were re-exposed to the same strain of SARS-CoV-2. The other two served as controls, with researchers monitoring their continued recovery.
- Qin's team noted that after the second SARS-CoV-2 exposure, the four macaques developed a transient fever that had not been seen after their first infection. No other signs of reinfection were observed or detected in chest X-rays, and the animals tested negative for active virus over a two-week period.
- While more study is needed to understand details of the immune responses, researchers did detect a reassuring appearance of antibodies specific to the SARS-CoV-2 spike protein in the macaques over the course of the first infection. The spike protein is what the virus uses to attach to macaque and human cells before infecting them
<https://directorsblog.nih.gov/2020/07/14/study-in-primates-finds-acquired-immunity-prevents-covid-19-reinfections/>

American company expects to start large US Covid-19 vaccine trial on July 27

- Moderna, an American biotech company, expects to start their largest study yet of its Covid-19 vaccine candidate on July 27, according to details released Tuesday on a government database that tracks clinical trials conducted around the world.
- Here is how the vaccine trial will work:
 - For the phase three study, researchers plan to enroll 30,000 adult participants, including people whose locations or circumstances put them at high-risk of infection.

- One group will be injected with 100 micrograms of the vaccine on day one and again on day 29. A second group will be injected with two doses of a placebo for comparison.
- Fourteen days after the participants get their second dose, the researchers will be looking at whether they develop Covid-19.
- The participants will be followed for two years after receiving their second dose.
- The study will be conducted at 87 locations across the United States.
https://www.cnn.com/world/live-news/coronavirus-pandemic-07-14-20-intl/h_94396b24a786a93119f4441c50bc8c5f

Most US counties "are in a position to reopen their schools," CDC head says

- Dr. Robert Redfield, director of the US Centers for Disease Control and Prevention, said "a majority of counties in this country" are in a place where they can reopen their schools.
- "I think there's actually a majority of counties in this country that are in a position to reopen their schools based on the data we have now, case counts, the percent positive, the availability of testing and the resilience of the health system they have," Redfield said today at a webinar with the Buck Institute for Research on Aging.
- He added that he thinks a majority of counties would meet the criteria to reopen, as long as teachers, administrators and parents had the confidence to do so.
- "It has to be done safely. It has to be done with the confidences of the teachers. It has to be done with the confidence of the parents," Redfield said.
- One of the things the CDC has tried to do, he said, is "allow people how to understand how to do their own risk assessment" – something that is very important as local school districts are going to have to make their own decisions.
- While Redfield said he didn't want people to overestimate the risk of serious illness for children, he did point out there needs to be ample considerations to vulnerable individuals – for example, teachers or students who have existing co-morbidities.
https://www.cnn.com/world/live-news/coronavirus-pandemic-07-14-20-intl/h_1a5f462f3a1d51b0b88cb32c88d386e4

Newsom orders statewide reclosure of indoor dining, limits on church services, salons

- California is largely closing again amid a spike in COVID-19 cases across the state, as Gov. Gavin Newsom announced statewide restrictions Monday to again halt all indoor dining and close bars, zoos and museums.
- At the same time, most counties, including Los Angeles, San Bernardino, Orange and Riverside, will be forced to shutter gyms, houses of worship, hair salons, malls and other businesses under the new order, which is effective immediately and remains in effect indefinitely. In addition, offices with nonessential workers in those counties must close.
- The move further pushes Californians back into their homes during a time when they are typically enjoying summer vacations. The stricter measures to close gyms, churches and other services affect 29 counties that are among the most populous in the state, where 80% of California residents live.
https://www.latimes.com/california/story/2020-07-13/newsom-california-county-rollback-reopening-coronavirus?utm_source=sfmc_100035609&utm_medium=email&utm_campaign=27633+Essential+California+07%2f14%2f20&utm_term=https%3a%2f%2fwww.latimes.com%2fcalifornia%2fstory%2f2020-07-13%2fnewsom-california-county-rollback-reopening-coronavirus&utm_id=9978&sfmc_id=3160688

Related

CA Closes Most Indoor Activities Statewide As Coronavirus Surges

https://patch.com/california/lakeelsinore-wildomar/s/h6d6p/ca-closes-most-indoor-activities-statewide-as-coronavirus-surges?utm_term=article-slot-3&utm_source=newsletter-daily&utm_medium=email&utm_campaign=newsletter

Gov. Newsom orders major reopening rollback in attempt to control rampant COVID-19 spread

https://abc7.com/health/watch-today-gov-newsom-gives-covid-19-update/6315327/?fbclid=IwAR2KqTFgkCdy6lCgaujdfn50hEuMJDwdRIKdFdtglwu26xW_HoHmT4_fhzk

L.A. Unified will not reopen campuses for start of school year amid coronavirus spike

- Los Angeles campuses will not reopen for classes on Aug. 18, and the nation's second-largest school system will continue with online learning until further notice, because of the worsening coronavirus surge, Supt. Austin Beutner announced Monday.
- The difficult decision became unavoidable in recent weeks, Beutner said, as coronavirus cases have skyrocketed in Los Angeles County, and the district cannot come close to protecting the health and safety of some half a million K-12 students and about 75,000 employees.
- "Let me be crystal clear," Beutner said. "We all know the best place for students to learn is in a school setting." But, he said, "We're going in the wrong direction. And as much as we want to be back at schools and have students back at schools — can't do it until it's safe and appropriate."

https://www.latimes.com/california/story/2020-07-13/l-a-unified-will-not-reopen-campuses-start-of-school-year?utm_source=sfmc_100035609&utm_medium=email&utm_campaign=27633+Essential+California+07%2f14%2f20&utm_term=https%3a%2f%2fwww.latimes.com%2fcalifornia%2fstory%2f2020-07-13%2f-l-a-unified-will-not-reopen-campuses-start-of-school-year&utm_id=9978&sfmc_id=3160688

Youth Team Sports: Practice, Drills Condemned In Riverside County

- Youth team sports are not allowed to resume in California amid coronavirus concerns, and the same goes for any team conditioning, practice or drills, according to Riverside County's legal team.
- Despite the ability of coaches/instructors to modify outdoor training that allows for physical distancing and zero contact, Riverside County is discouraging any practices based on interpretation of state guidance.
- "The California Department of Public Health (CDPH) has specifically confirmed that no team sports, conditioning or drills are permitted under any of the current guidance," a July 9 letter from Riverside County Counsel Gregory P. Priamos reads. "The Day Camp Guidance published by CDPH may not be used as a means to facilitate team conditioning, practicing, or training for any organized or recreational team sports, including school, club, and travel teams."
- Professional sports in California, however, are allowed to resume training and competition — without live audiences — as long as the county public health officer approves based on scientific data regarding COVID-19 cases and positivity rates, according to the CDPH.
- None of Riverside County's pro/minor league sports teams are currently competing, but it's not clear how many are practicing in a modified safety setting with the help of coaches and trainers.
- Yet the state doesn't allow any modifications for recreational team sports. "Recreational team sports are not permitted and will be subject to separate guidance," which has yet to be issued, according to the CDPH's "Industry Guidance" online portal.

https://patch.com/california/lakeelsinore-wildomar/s/h6d50/youth-team-sports-practice-drills-condemned-in-riverside-county?utm_term=article-slot-2&utm_source=newsletter-daily&utm_medium=email&utm_campaign=newsletter

One Good Thing

- Stories about the kindness of strangers and individuals who sacrifice for others during the coronavirus outbreak.

<https://apnews.com/OneGoodThing>

Information

PAHO Webinar: CO-EXISTING with COVID-19: An Epidemiological Perspective

15 Jul 2020 - 15 Jul 2020

<https://www.paho.org/en/events/co-existing-covid-19-epidemiological-perspective>

Campus Security & Life Safety Virtual Summit

- Join campus security experts on July 15, 2020 for three live presentations, all from the convenience of your computer!
 - Session 1: Keynote: Campus Law Enforcement Highlight Proven Security Practices
12:00pm ET / 11:00am CT / 9:00am PT
 - Session 2: Parent/Student Reunification
2:00pm ET / 1:00pm CT / 11:00am PT
 - Session 3: Preparing for an Active Shooter
4:00pm ET / 3:00pm CT / 1:00pm PT

https://campuslifesecurity.com/pages/virtual-summit.aspx?pc=B&oly_enc_id=3893H0473678F9H

Join us for a Georgetown University Center for Security and Emerging Technology (CSET) webinar panel "AI Speeding Up Disinformation."

- Information Warfare: A U.S. Army Mad Scientist Series of Virtual Events
- Join us for a webinar panel, "AI Speeding Up Disinformation" as part of our ongoing series on "Weaponized Information," moderated by Lt. Gen. (ret.) John D. Bansemer and featuring panelists, Dr. Margarita Konaev, Katerina Sedova, and Tim Hwang. This panel features experts on artificial intelligence, information warfare, and international security in both the European and Pacific theaters. Discussion will encompass how emerging technologies will accelerate disinformation and what impact it could have on the operational environment and the implications from deep fakes, advanced troll armies, mass-produced fake personas, and other aspects of an advanced information environment.

https://www.eventbrite.com/e/information-warfare-a-us-army-mad-scientist-series-of-virtual-events-registration-111670637884?aff=eemailordconf&utm_campaign=order_confirm&utm_medium=email&ref=eemailordconf&utm_source=eventbrite&utm_term=viewevent

U.S. Data

Covid-19 Case Cluster (past 48 hours)

<https://www.cdc.gov/covid-data-tracker/index.html>

Social Impact COVID-19 Events in the United States

9 EVENTS
Past 48 hours

Map of news reports related to social impact events resulting from the COVID-19 outbreak in the United States, such as school closures, localized outbreaks, state of emergency declarations, etc.

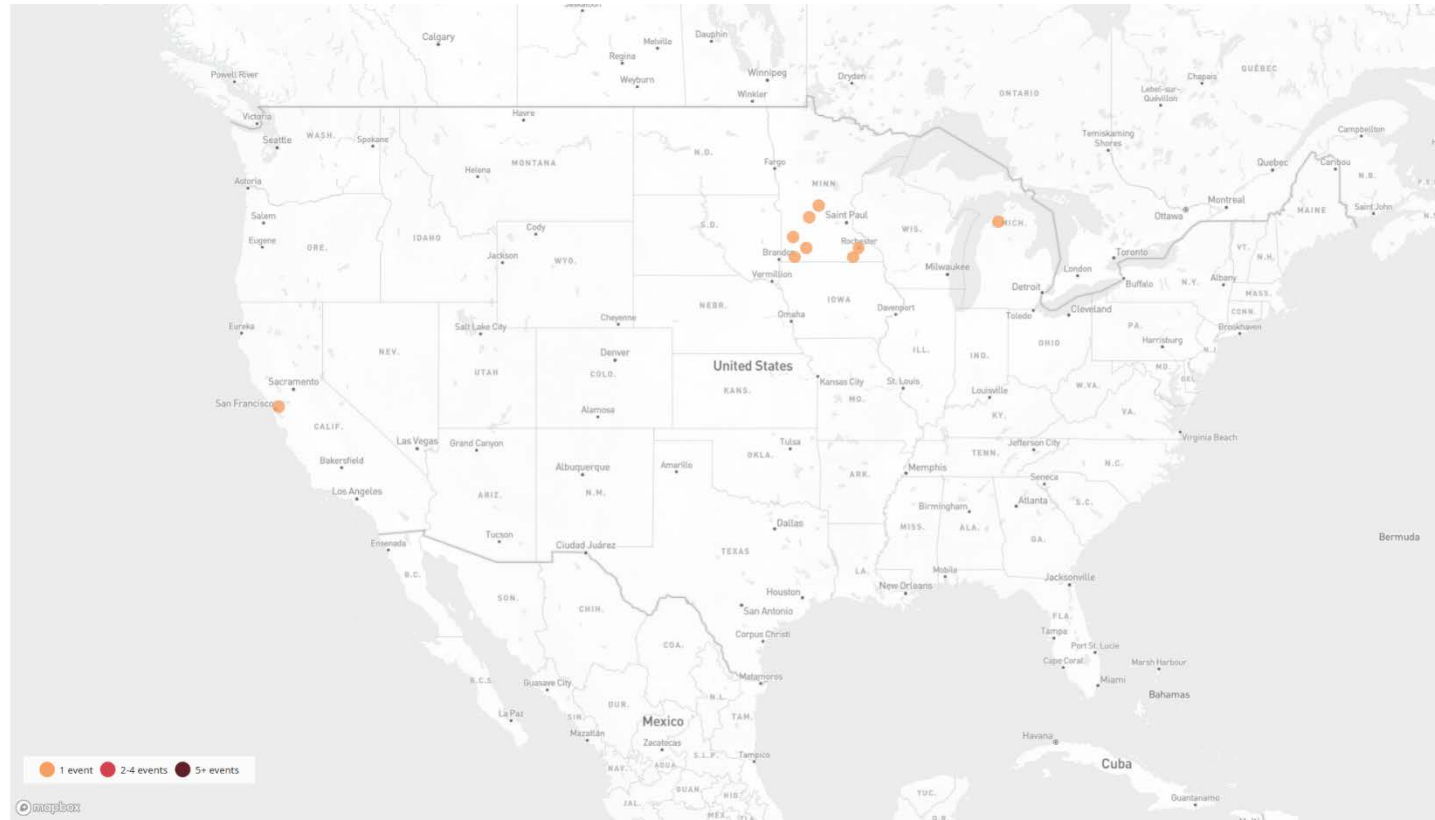
DATE RANGE

Past 48 hours

TYPE OF EVENT

COVID-19 Case Clusters

[About this Map](#) | Developed by HealthMap

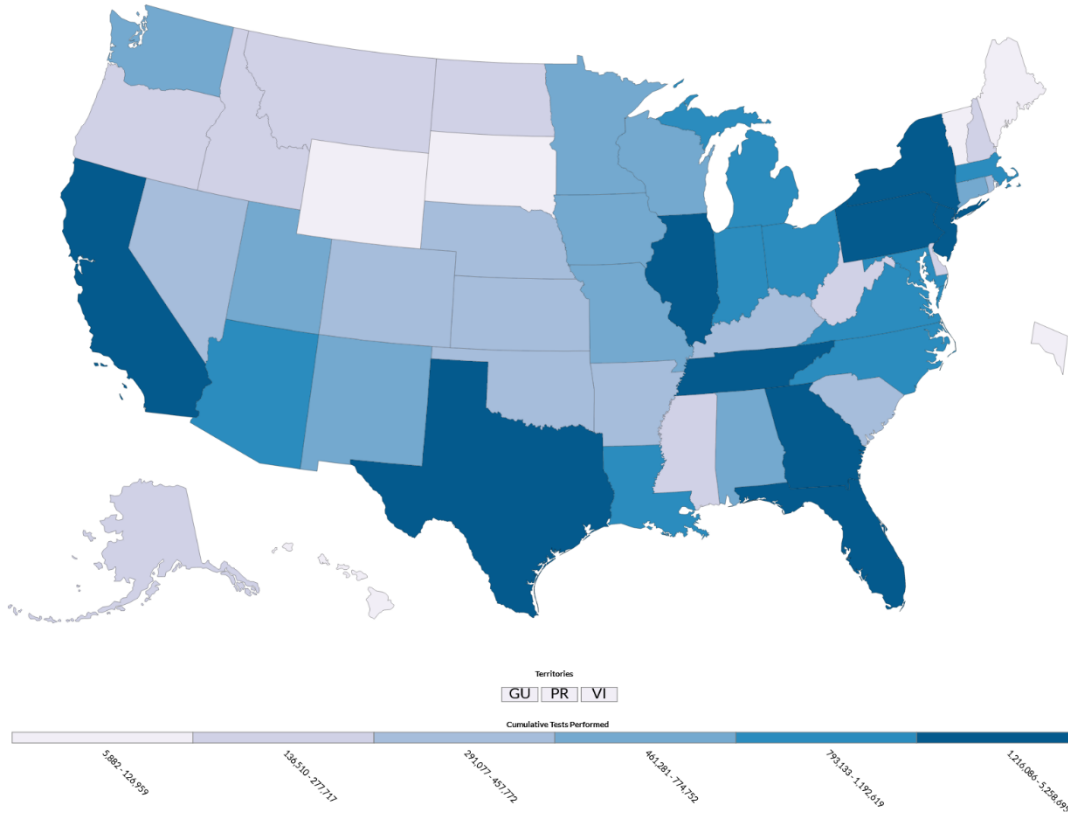


United States Laboratory Testing

Commercial and Reference, Public Health, and Hospital Laboratories

Note: The testing data will not update on Tuesday, July 14th, due to planned system downtime. The testing data will update again by 6:30pm on Wednesday, July 15th

Preliminary data: Reported by U.S. Laboratories including Commercial and Reference, Public Health, and Hospital
Totals may include antibody data from some states



COVID-19 Tests Performed by State (Commercial and Reference, Public Health, and Hospital)

State	# Tests Performed	% Positive
California	5,258,695	6-10%
New York	4,601,508	11-20%
Florida	3,295,882	11-20%
Texas	2,077,551	6-10%
Illinois	1,757,630	6-10%
Tennessee	1,340,378	6-10%
New Jersey	1,238,773	6-10%
Pennsylvania	1,237,230	6-10%
Georgia	1,216,086	6-10%
Michigan	1,192,619	6-10%
Massachusetts	1,182,938	11-20%
Ohio	979,149	6-10%
North Carolina	945,161	11-20%
Indiana	897,610	6-10%
Louisiana	861,878	11-20%
Maryland	834,209	11-20%
Arizona	812,508	11-20%
Virginia	793,133	11-20%
Wisconsin	774,752	0-5%
Washington	746,919	6-10%
Minnesota	684,349	6-10%
Alabama	625,156	11-20%
Utah	623,308	6-10%
Missouri	618,436	0-5%
Connecticut	551,927	6-10%
New Mexico	483,311	0-5%
Iowa	461,281	6-10%
South Carolina	457,772	11-20%
Nevada	411,696	6-10%
Colorado	386,775	6-10%
Kentucky	374,706	6-10%
Arkansas	369,811	6-10%
Oklahoma	344,952	0-5%
Nebraska	335,994	11-20%
Kansas	317,764	6-10%
Rhode Island	291,077	6-10%
Oregon	277,717	0-5%
Mississippi	247,494	0-5%
North Dakota	230,661	0-5%
West Virginia	196,850	0-5%
New Hampshire	181,865	6-10%
Idaho	161,753	6-10%
Alaska	152,780	0-5%
Delaware	140,123	6-10%
Montana	136,510	0-5%
Maine	126,959	0-5%
District of Columbia	121,852	11-20%

USA
41,761,392
TESTS REPORTED

CDC | Updated: Jul 14 2020 12:15PM

USA
3,754,729
POSITIVE TESTS

CDC | Updated: Jul 14 2020 12:15PM

USA
9%
OVERALL % POSITIVE

CDC | Updated: Jul 14 2020 12:15PM

State Data

<https://covid19.ca.gov/>
<https://update.covid19.ca.gov/#top>
<https://www.cdph.ca.gov/Programs/CID/DCDC/Pages/Immunization/ncov2019.aspx#>

Statewide industry guidance to reduce risk

<https://covid19.ca.gov/industry-guidance/#top>
<https://www.cdph.ca.gov/Programs/CID/DCDC/Pages/Guidance.aspx>

Open sectors in counties with variance

<https://covid19.ca.gov/roadmap-counties/#track-data>
<https://covid19.ca.gov/roadmap-counties/>

Data models

<https://covid19.ca.gov/data-and-tools/>

New Statewide & County Closures

- Effective immediately, California closes some indoor business operations statewide and additional indoor operations in counties on Monitoring List for 3 consecutive days.
- Statewide indoor closures include restaurants, bars and breweries, wineries & tasting rooms, movie theaters, family entertainment centers, zoos and museums, and cardrooms. County indoor closures include fitness centers, places of worship, indoor protests, offices for non-critical infrastructure sectors, personal care services, hair salons and barbershops, and malls. County closures apply to counties that have been on the County Monitoring List for 3 consecutive days.

Hospitals

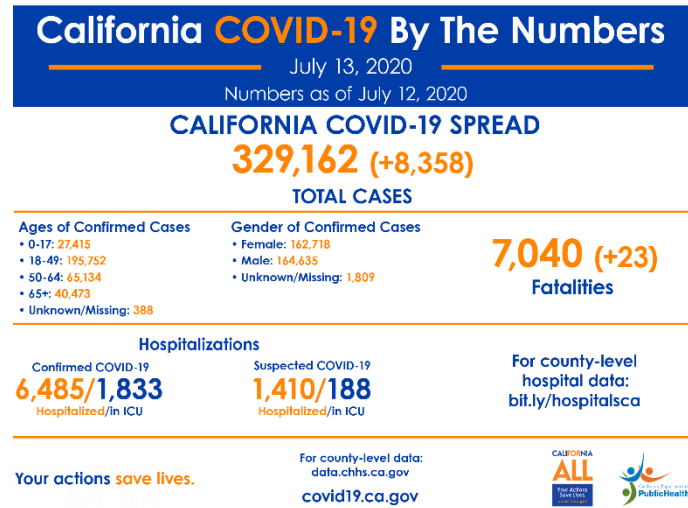
Total vs Last 14 day change
 372 Hospitals Reporting (70,486 Hospital Beds)

7,895
 Hospitalized COVID-19 Patients
 (Suspected + Positive)
 1,716 Patients
 27.8% Increase

36%
 ICU Beds Available

2,021
 ICU Hospitalized COVID-19 Patients
 (Suspected + Positive)
 335 Patients
 19.9% Increase

72%
 Ventilators Available



Track county data and monitoring status

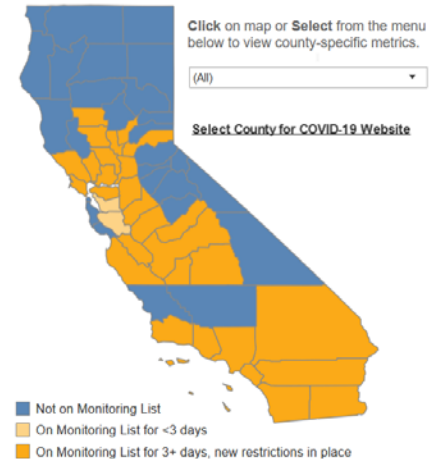
California Statistics

Total Population: 40,129,160

109,910
 New Cases (Last 14 Days)
 273.9 Per 100K
 329,162 Total Cases

1,104
 New Deaths (Last 14 Days)
 2.8 Per 100K
 7,040 Total Deaths

1,482,673
 Tests Reported (Last 14 Days)
 7.4% Test Positivity
 2.6 Daily per 1,000 Residents
 5,544,365 Total Tests Reported



Riverside County Data

<https://www.rivcoph.org/coronavirus>

RUHS Public Health:

[Statewide Public Health Officer Order](#) - July 13, 2020

More businesses required to move activities outdoors or close [English](#) / [Spanish](#)- July 13, 2020

OPEN

Retail
Manufacturers
Logistics
Childcare for those outside of the essential workforce
Office-based businesses
Car washes, pet grooming, and landscape gardening
Short-term vacation rentals
Hotels, motels, inns (for tourism and travel)
Campgrounds & outdoor recreation
Schools, day camps and daycares
Libraries

Outdoor operations for restaurants including bars; wineries & tasting rooms; movie theaters; museums and galleries; zoos; family entertainment centers and cardrooms (Eff. July 1, 2020)
Outdoor operations for personal care services including nail salons; facial and esthetician services; shaving; waxing and threading; massage therapy; body art, tattoo and piercing (Eff. July 13, 2020)
Outdoor operations for shopping malls; including swap meets; fitness centers; worship services; weddings and cultural ceremonies; hair salons and barbershops (Eff. July 13, 2020)
Pro-sporting events (no live audiences)
Filming for TV and Music

! CLOSED !

Bars that don't serve meals (Eff. June 30, 2020)
Youth and team sports
Concert venues
Sports event with live audiences
Indoor operations for personal care services including nail salons; facial and esthetician services; shaving; waxing and threading; massage therapy; body art, tattoo and piercing (Eff. July 13, 2020)

Indoor operations for restaurants; wineries & tasting rooms; movie theaters; museums and galleries; zoos; family entertainment centers and cardrooms (Eff. July 1, 2020)
Indoor operations for shopping malls; including swap meets; fitness centers; worship services; weddings and cultural ceremonies; offices for non-critical sectors; hair salons and barbershops (Eff. July 13, 2020)
Wedding & cultural ceremony receptions

RIVERSIDE COUNTY COVID-19 RECOVERY



RIVERSIDE COUNTY COVID-19 CASES

DATA SUMMARY

Jul 13, 2020

TOTAL CASES
25,748

NEW CASES
222

TOTAL DEATHS
550

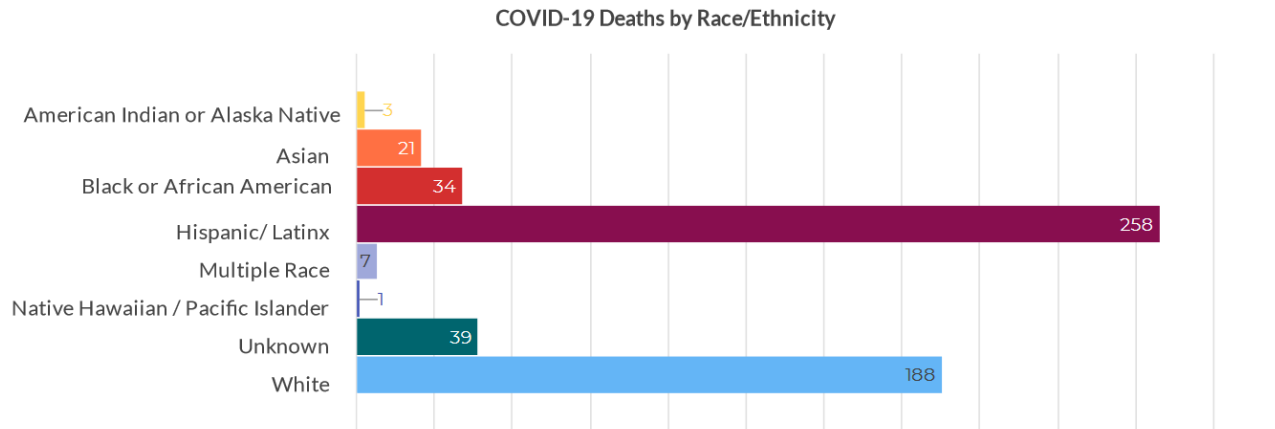
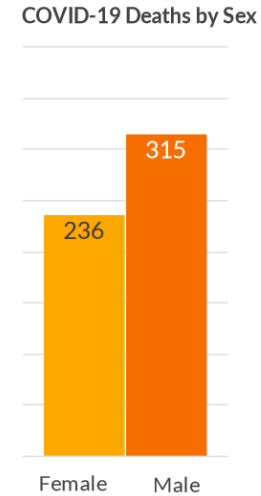
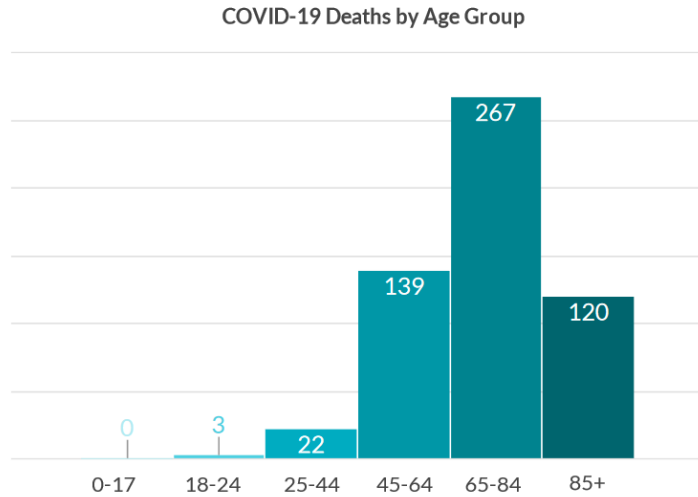
NEW DEATHS
4

TOTAL RECOVERED
9,711

CURRENT HOSPITALIZED
(includes ICU)
511

CURRENT ICU
139

DOUBLING TIME
23.7



Date	American Indian or Alaska Native % Death	Asian % Death	Black or African American % Death	Hispanic/Latinx % Death	Multiple Race % Death	Native Hawaiian/Pacific Islander % Death	Unknown % Death	White % Death
Jul 13, 2020	0.55	3.82	6.22	46.91	1.27	0.18	7.09	34.18

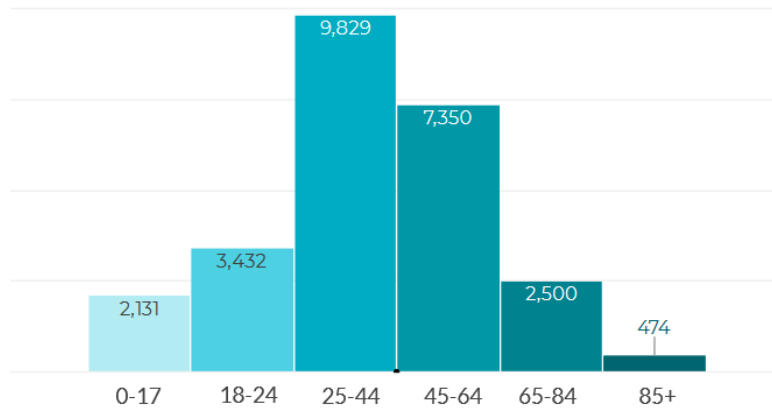


RIVERSIDE COUNTY COVID-19 CASES

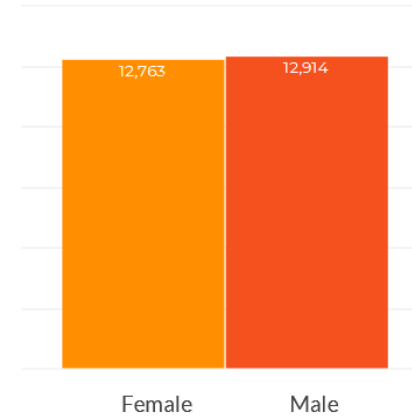
DATA SUMMARY

Jul 13, 2020 -

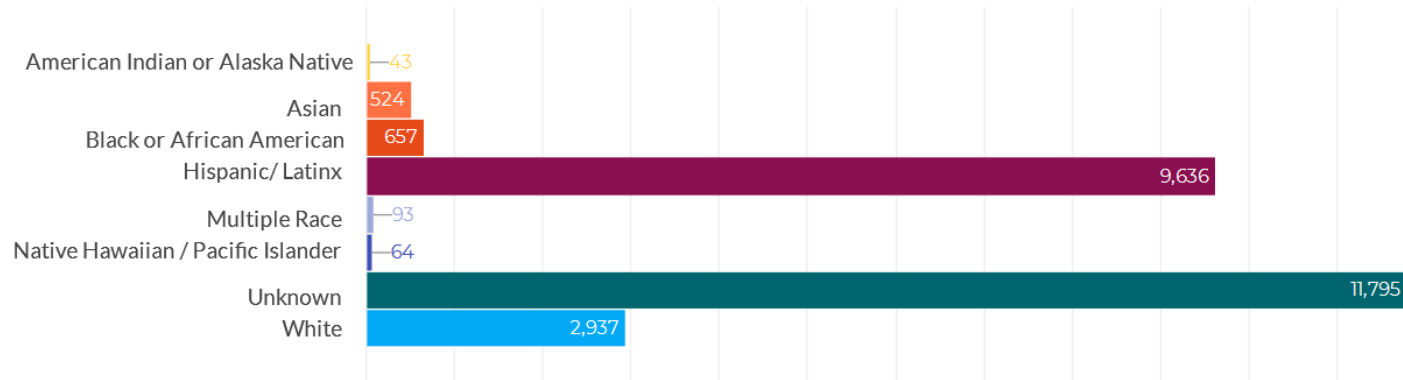
COVID-19 Cases by Age Group



COVID-19 Cases by Sex



COVID-19 Cases by Race/Ethnicity

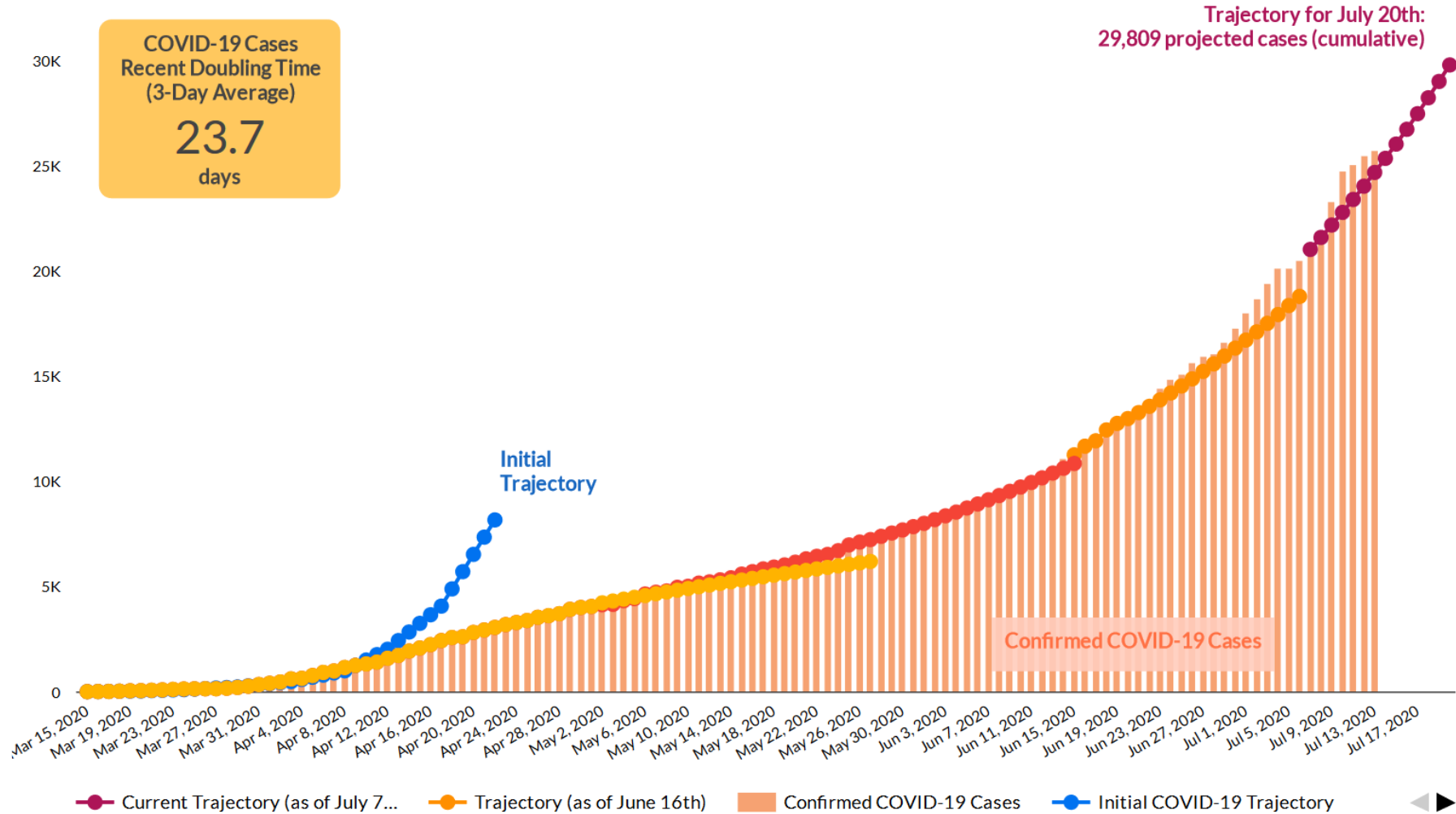


Date	American Indian or Alaska Native % Cases	Asian % Cases	Black or African American % Cases	Latinx % Cases	Multiple Race % Cases	Native Hawaiian/ Pacific Islander % Cases	Unknown % Cases	White % Cases
Jul 13, 2020	0.2	2	2.6	37.4	0.4	0.2	45.8	11.4



RIVERSIDE COUNTY COVID-19 TRAJECTORY

Jul 13, 2020 - Jul 13, 2020



MAJOR EVENTS:

March 13th: Public Health Officer orders school closure
 March 19th: California Governor orders stay at home
 April 4th: Public Health Officer orders stay at home and cover the face
 April 18th: Asymptomatic testing begins

May 1st: Riverside County reverts to State orders
 May 8th: Riverside County begins Phase 2
 May 22nd: Riverside County accelerates to Phase 2.5
 May 25: Memorial Day
 June 1: Protest Downtown Riverside

June 29th: Bar closures ordered in Riverside County
 July 1st: Indoor dining and other select indoor venues closed

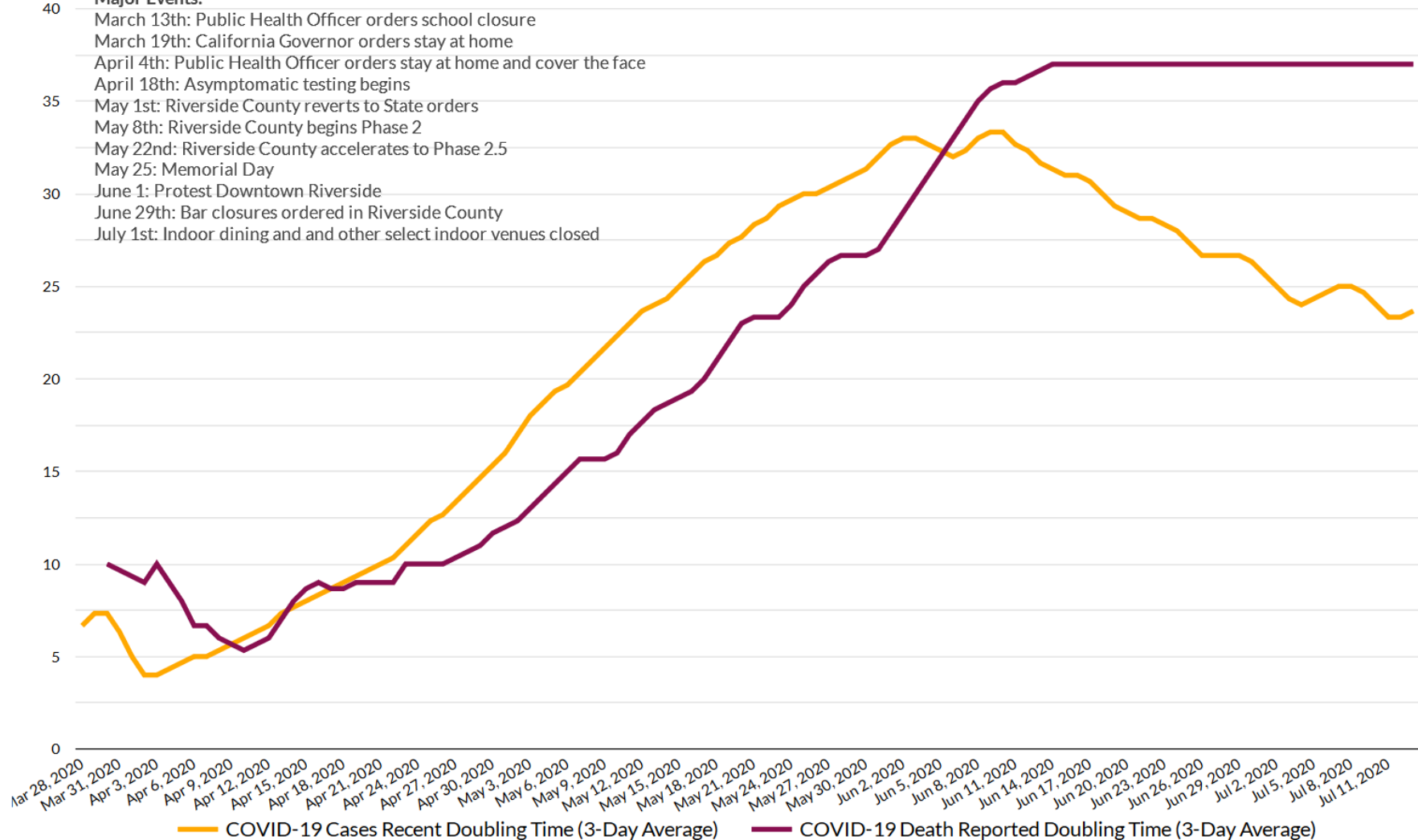


RIVERSIDE COUNTY COVID-19 DOUBLING TIME

Mar 28, 2020 - Jul 13, 2020

Major Events:

- March 13th: Public Health Officer orders school closure
- March 19th: California Governor orders stay at home
- April 4th: Public Health Officer orders stay at home and cover the face
- April 18th: Asymptomatic testing begins
- May 1st: Riverside County reverts to State orders
- May 8th: Riverside County begins Phase 2
- May 22nd: Riverside County accelerates to Phase 2.5
- May 25: Memorial Day
- June 1: Protest Downtown Riverside
- June 29th: Bar closures ordered in Riverside County
- July 1st: Indoor dining and other select indoor venues closed



*Based on case report date and death report date



RIVERSIDE COUNTY COVID-19 CASES

by lab specimen collection date

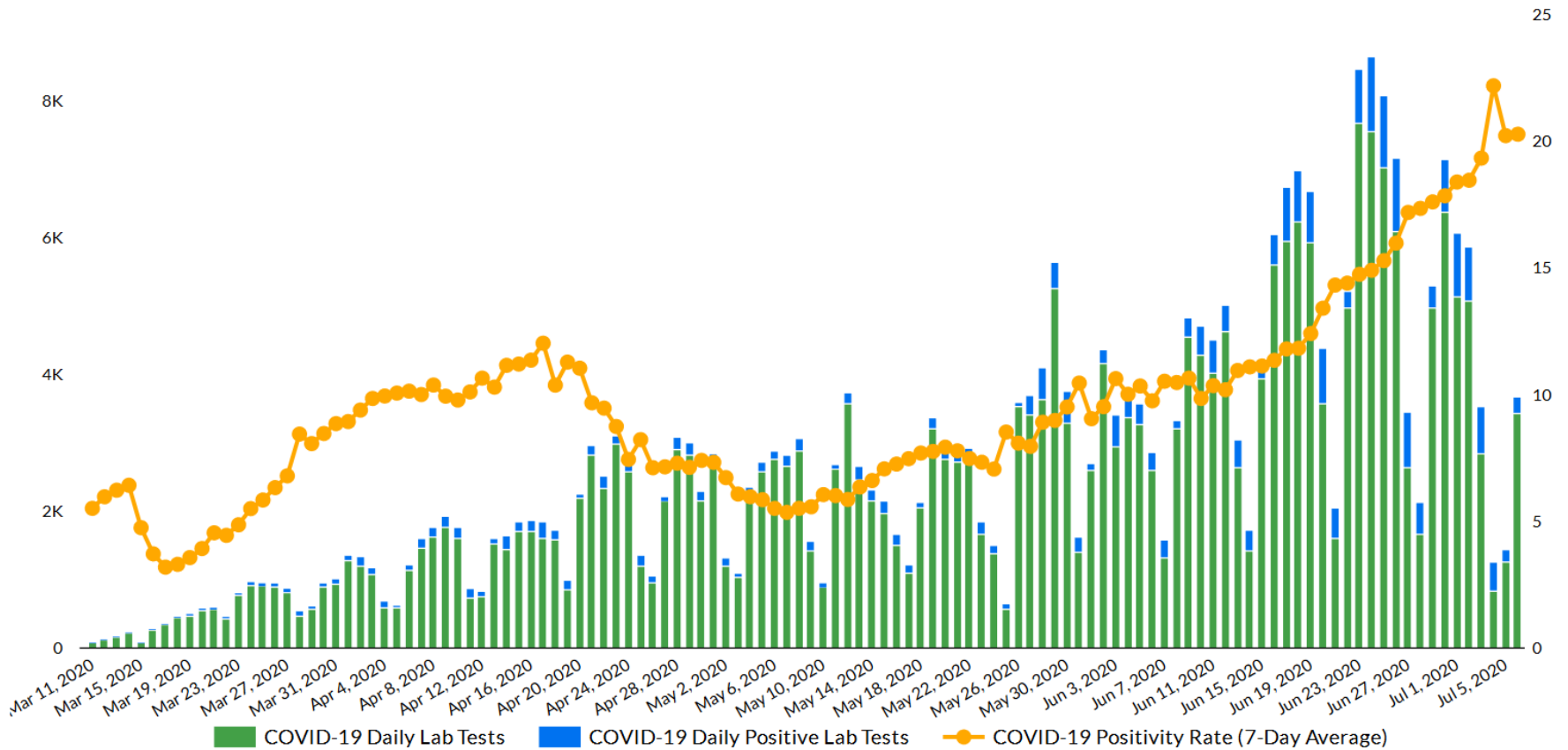
Positivity rate is now determined using specimen collection date with a 7-day lag to align with State methodology

POSITIVE*
30,302

TESTS RESULTED*
289,362

10K

Date	Recent Positivity Rate
Jul 6, 2020	20.3
Jul 5, 2020	20.2
Jul 4, 2020	22.2



*Based on lab specimen collection date

*Numbers are based on lab reporting and may slightly differ from confirmed case counts



Emergency Management Department - COVID-19 Metrics

Last Updated:

2020-07-13 14:20:00



PREPARE



RESPOND



RECOVER

This collection of metrics is intended to help illustrate the impact of COVID-19 on the hospitals in Riverside County. The Emergency Management Department (EMD), in partnership with the Public Health Department, collects and tracks multiple metrics to assist in the County's response to COVID-19.

For the most up-to-date Riverside County Coronavirus information, please visit the Riverside County Public Health Department's website: <https://www.rivcoph.org/coronavirus>

Reporting of data runs 24 hours behind for State datasets, therefore the metrics below will normally be current with yesterday's data.

Hospitalized COVID-Confirmed Patients

511

↑ 0.4% from previous day

Riverside Co. Hospitals' Patient Census

2,446

↓ -2.8% from previous day

Ventilators In Use

198

↑ 0.5% from previous day

Available Ventilators at Hospitals

490

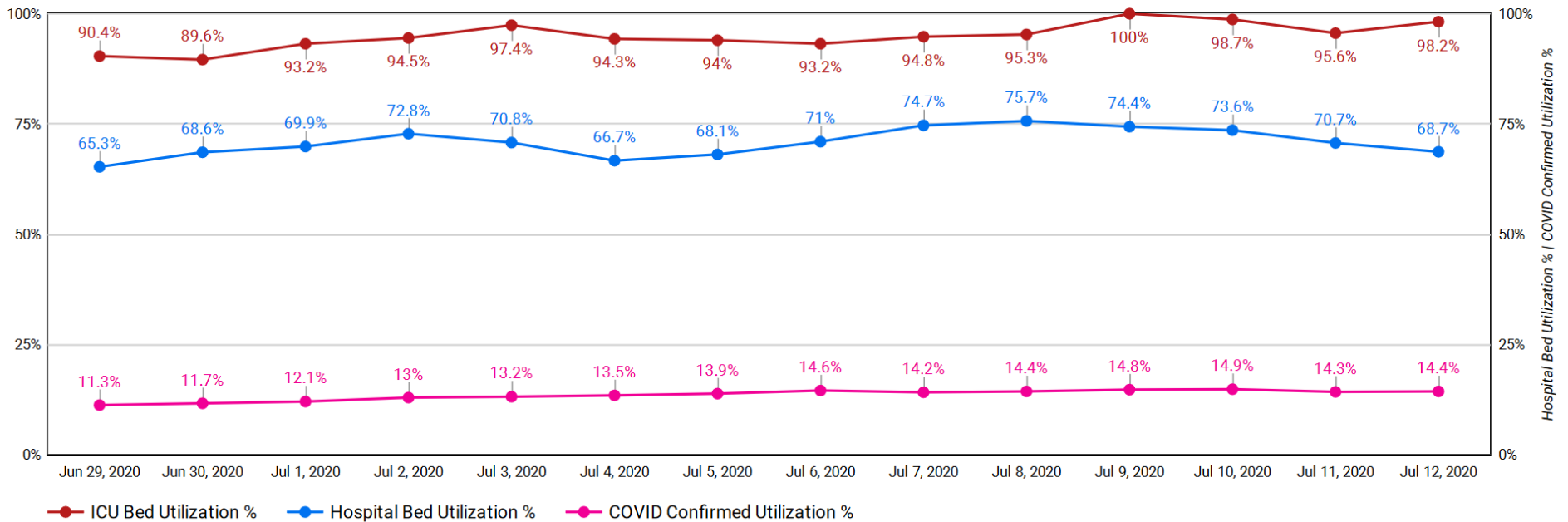
↓ -0.2% from previous day

ICU Beds In Use

378

↑ 2.7% from previous day

Licensed Hospital Bed/ICU Bed Utilization Trends



This page was created by the Riverside County Emergency Operations Center (EOC) to visualize hospital bed utilization rates compared with ICU bed utilization for the past two weeks. Hospitalized COVID-Confirmed Patient volume is received with a day's lag time.



COVID-19 Hospitalized Patients - Rolling Metrics

Last Updated:

2020-07-13 14:20:00



PREPARE



RESPOND



RECOVER

This page displays COVID-Confirmed hospitalized patient trends in Riverside County hospitals, with a focus on changes in 3-day and 7-day moving averages as outlined by the State of California's re-opening criteria for counties.

Currently Hospitalized COVID-Confirmed Patients in Riverside County
511

Currently Hospitalized Patients from Correctional Facilities
6

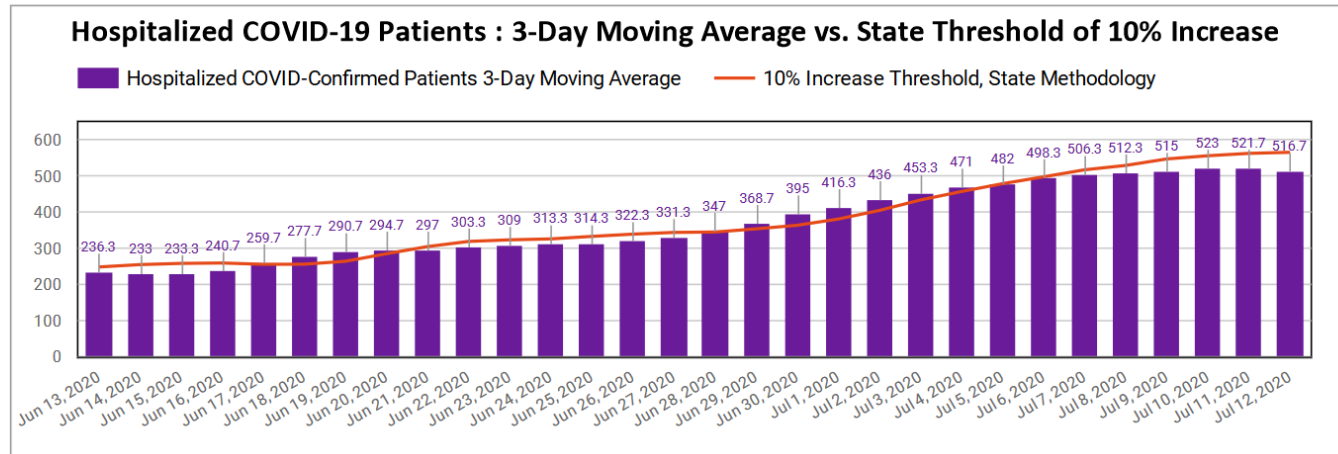
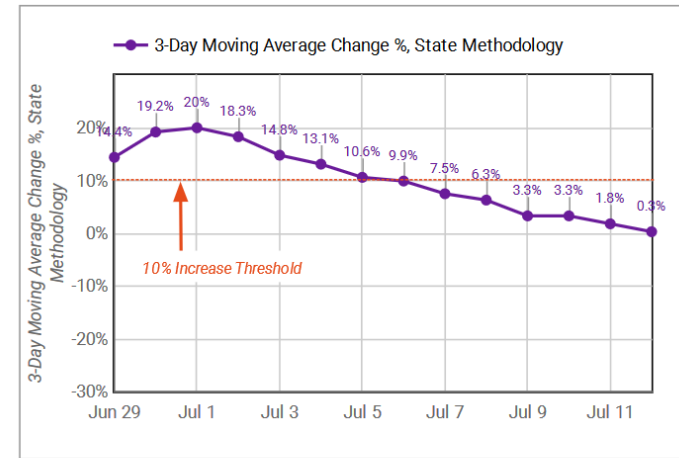
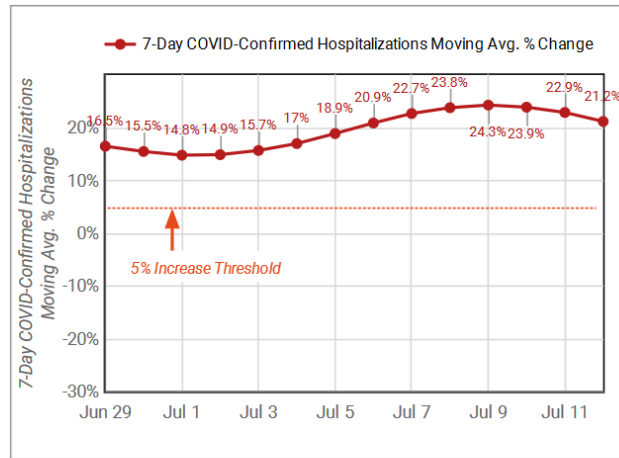
Currently Hospitalized Patients from Imperial County
6

Hospitalized COVID-Confirmed Patients, 3-Day Avg.
516.7

3-Day Mov. Avg. Change, State Methodology
0.3%

Daily Change in 3-Day Moving Average
-1.0%

3-Day Moving Average State Methodology: Last 3 days' average compared to the prior 3 days' average, compared against new 3-Day average. The change, measured in percent, represents the difference in the current 3-day moving average vs. the prior 3-day moving average.





This page was created by the Emergency Operations Center (EOC) - EMS Team, to visualize COVID-19 trends in Riverside County. Please visit the Department of Public Health's Coronavirus page for updated local information on the Coronavirus response in Riverside County: <https://www.rivcoph.org/coronavirus>

Weather

COVID-19 Weather Support

Issued:

1030 AM July 14, 2020

IMPACT SCALE

●
None

●
Minor

●
Moderate

●
High

●
Extreme

Resources

- <https://www.weather.gov/spot/>
- <https://inws.ncep.noaa.gov>
- <https://www.wrh.noaa.gov/sgx/event/dsstable.php>

(858) 675 - 8705
(24/7, Restricted)

Weather.gov/SanDiego

7-day Forecast for Counties in far Southwest CA

Period July 14 - July 21 (24-hr)	Orange	SW San Bernardino	All Deserts	Western Riverside	San Diego
Today	None	None	Warm Breezy	None	None
Wednesday	None	None	Warm Breezy	None	None
Thursday	None	None	Warm	None	None
Friday	None	None	Warm	None	None
Saturday	None	None	Warm	None	None
Sunday	None	Warm	Warm	Warm	None
Monday	None	None	Warm	None	None
Tuesday	None	None	Warm	None	None

Forecast Discussion

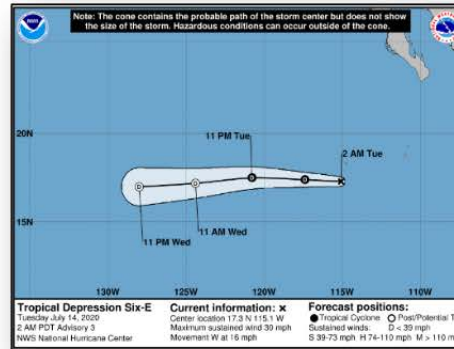
Seasonal temperatures can be expected through Thursday. Breezy conditions are expected late today and again late Wednesday for portions of the mountains and deserts. Friday through the weekend, temperatures will increase to a few degrees above normal in the inland valleys and the deserts.

Latest hazard threat table: <https://www.wrh.noaa.gov/sgx/event/dsstable.php>

Tropical Outlook



Central Pacific



Eastern Pacific



Atlantic

Tropical Depression Six-E (Advisory #3 as of 5:00 a.m. ET)

- 515 miles SW of the southern tip of Baja California
- Moving W at 16 mph
- Maximum sustained winds 30 mph
- Forecast to decay into a post-tropical cyclone on Wednesday

Hazards Outlook – Jul 16-20



FEMA

