



****Extraordinary Assumptions:** There are a lot of different data sources in this report not all of them match but aid to provide an overall picture of the current situation. COVID-19 Data Source Comparison - https://covid-19.splunkforgood.com/covid_19_datasource_comparison

Daily Situation Summary

Monday, July 13, 2020

As of 10:00 AM

COVID-19 by the Numbers

07/13/2020

	Riverside	Imperial	Kern	Los Angeles	Orange	San Bernardino	San Diego	San Luis Obispo	Santa Barbara	Ventura	California	United States	Global
Total Cases	25,994	6,884	6,509	130,479	24,430	18,907	19,371	930	4,283	4,545	320,804	3,236,130	12,750,275
New Cases	513	6	165	2,976	738	665	509	39	106	129	8,460	62,918	197,510
Cases Per Capita	1,091	3,820	737	1,292	772	885	586	330	965	536	819	981	166
Recovered	9,367	6,655	4,190	Not Reported	10,197	10,422	Not Reported	Not Reported	3,555	2,298	86,287	1,518,234	7,625,393
Total Deaths	537	135	97	3,793	421	304	422	4	31	53	7,017	134,572	566,355
New Deaths	0	3	0	55	9	0	2	0	0	0	72	906	4,738
Deaths Per Capita	22.53	74.91	10.98	37.56	13.31	14.24	12.78	1.42	6.99	6.25	17.92	40.79	7.39
% of State's Cases	8.10%	2.15%	2.03%	40.67%	7.62%	5.89%	6.04%	0.29%	1.34%	1.42%	9.91%	25.38%	
Currently in Hospitals	647	76	273	2,769	786	652	466	11	81	76	7,854		
Total Hospital Beds	4,068	298	1,822	23,980	7,401	4,838	6,441	463	763	298	80,944		
Currently in ICU	123	17	59	566	233	165	141	4	25	123	1,806		
ICU Beds Available	148	10	82	1,352	378	145	300	40	56	148	3,788		
Case Fatality Rate	2.1%	2.0%	1.5%	2.9%	1.7%	1.6%	2.2%	0.4%	0.7%	1.2%	2.2%	4.2%	4.4%
Population*	2,383,286	180,216	883,053	10,098,052	3,164,182	2,135,413	3,302,833	281,455	443,738	848,112	39,148,760	329,937,835	7,663,041,000
% of Population	6.09%	0.46%	2.26%	25.79%	8.08%	5.45%	8.44%	0.72%	1.13%	2.17%	0.10%	0.0422%	

Sources: CDPH, WHO, CDC

The date for which case statistics and hospital data were reported. Hospital COVID data are self-reported through a portal managed by the California Hospital Association and pulled at 2pm. COVID case statistics are reported by local health departments to CaIREDIE and are pulled at 2pm. Hospital data and case statistics are integrated by the California Department of Technology and made available through the Open Data Portal the following morning.

*California-Demographics.com is made by Cubit – a demographic data provider & census.gov

News

More detail on page 2

US Data

More detail on page 7

Riverside County Data

More detail on page 10

Information

More detail on page 6

State Data

More detail on page 9

Weather

More detail on page 12

News

Two countries accounted for 50% of new cases worldwide yesterday, WHO says

- On Sunday, two countries accounted for half of all new cases added worldwide, World Health Director Director-General Tedros Adhanom Ghebreyesus said during a media briefing in Geneva on Monday.
- "“Yesterday, 230,000 cases of Covid-19 were reported to WHO. Almost 80% of those cases were reported from just 10 countries, and 50% come from just two countries,” he said."
- Tedros did not name the countries, but according to a Johns Hopkins university tally of cases, the United States, India and Brazil accounted for more than 112,000 cases on Sunday.
- “Let me be blunt: Too many countries are headed in the wrong direction,” Tedros said.
- “The virus remains public enemy number one,” Tedros said. “But the actions of many governments and people do not reflect of this.”
- “If governments do not clearly communicate with their citizens and roll out a comprehensive strategy focused on suppressing transmission and saving lives. If populations do not follow the basic principles of physical distancing, hand washing, wearing masks,” Tedros warned, “there is only one way this is going to go. It's going to get worse and worse and worse.”
- “But, it does not have to be this way,” he said.
- “It's never too late to bring the virus under control, even if there has been explosive transmission,” Tedros said. “WHO is committed to working with all countries.”

https://www.cnn.com/world/live-news/coronavirus-pandemic-07-13-20-intl/h_59ec592fbd6e7caca496a218f0d93274



"There will be no return to the old normal for the foreseeable future," WHO director-general says

- Tedros Adhanom Ghebreyesus, director-general of the World Health Organization, said Monday “There will be no return to the old normal for the foreseeable future.”
- Speaking at a media briefing in Geneva, he added, “But there is a roadmap to a situation where we can control the disease and get on with our lives.”
- “We need to reach a sustainable situation where we do have adequate control of this virus without shutting down our lives entirely or lurching from lockdown to lockdown,” he said.
-

- In order to get to this place, Tedros said that three things would be required. These are a focus on reducing mortality and suppressing transmission; an “empowered, engaged community” that takes individual measures to protect the whole community; and strong government leadership and communication.
- ““It can be done. It must be done,” Tedros said.”
- Tedros said that there are no shortcuts out of this pandemic, and that while we hope for an effective vaccine, there must be a focus on using the tools that are available now to suppress transmission and save lives.
https://www.cnn.com/world/live-news/coronavirus-pandemic-07-13-20-intl/h_bd77f11095a3930c53817f06c86592d3

WHO has published an Emergency Global Supply Chain System (COVID-19) catalogue

- The following catalogue lists all medical devices, including personal protective equipment, medical equipment, medical consumables, single use devices, laboratory and test-related devices that may be requested through the COVID-19 Supply Portal.
- The catalogue items represents an initial prioritized selection of items and are subject to constant review. Nothing in this catalogue should be construed as offer or guarantee for allocation of supplies. Item costs are estimates only.
[https://www.who.int/publications/m/item/emergency-global-supply-chain-system-\(covid-19\)-catalogue](https://www.who.int/publications/m/item/emergency-global-supply-chain-system-(covid-19)-catalogue)
https://www.who.int/docs/default-source/coronaviruse/20200701-catalogue-v06.pdf?sfvrsn=4f3dc59b_2&download=true

Understanding of Covid-19 transmission in children still limited, WHO says

- World Health Organization officials warned global leaders Monday against turning the decision to reopen schools “into yet another political football in this game.”
- “My fear in this is that we create these political footballs that get kicked around the place,” Dr. Mike Ryan, executive director of the WHO’s health emergencies program, said at a news conference at the organization’s Geneva headquarters. “If we suppress the virus in our society, in our communities, then our schools can open safely.”
- Maria van Kerkhove, the World Health Organization’s technical lead for coronavirus response, emphasized during a briefing Monday that the understanding of coronavirus transmission in children is still limited.
- “Children do seem to be less affected, but they can be infected. And that is important,” said van Kerkhove. “Our understanding of transmission in children is still limited.”
- The virus is less prevalent among young children, van Kerkhove said, while children about 10 and older appear to have about the same prevalence as young adults.
- However, she pointed out that children can have severe disease, and children have died from Covid-19.
- “They can be infected, which we’ve said from the beginning, but they do tend to have more mild disease,” she said. “In terms of transmission, there’s quite a lot that we still need to understand about transmission in children.”
- In relation to schools reopening, van Kerkhove said that WHO has issued guidance on the safe running of schools and also on considerations of when schools should reopen and that there are a number of considerations that need to take place.
- These include transmission in the local area and the ability of the school structure to be able to implement measures like social distancing and hand washing.
- Van Kerkhove said they have heard of some outbreaks in schools, mainly among older children.
<https://www.cnbc.com/2020/07/13/who-warns-against-using-school-reopenings-as-political-football-in-coronavirus-debate.html>
https://www.cnn.com/world/live-news/coronavirus-pandemic-07-13-20-intl/h_5b3250e206c56612da460ff22e53cbbf

UN says more than 130 million people worldwide may go hungry in 2020 due to Covid-19

- A UN report released Monday predicts the Covid-19 pandemic could send more than 130 million people around the world into chronic hunger by the end to 2020.
- The UN's Food and Agriculture Organization (FAO) published its latest edition of the State of Food Security and Nutrition in the World, which says the pandemic is "intensifying the vulnerabilities and inadequacies of global food systems."
- The report estimates "at a minimum, another 83 million people, and possibly as many as 132 million, may go hungry in 2020 as a result of the economic recession triggered by COVID-19."
- The report also estimates around 690 million people went hungry in 2019 – up by 10 million from the previous year.
- Africa is the hardest hit region in terms of percentages, with 19.1% of its people undernourished, according to the report, followed by Asia at 8.3%, and Latin America and the Caribbean at 7.4%.
- With the toll the pandemic is taking on food security, the report says achieving the Sustainable Development Goal of Zero Hunger by 2030 is in question.

https://www.cnn.com/world/live-news/coronavirus-pandemic-07-13-20-intl/h_00167f40c6d6ec3e636885c4f6fc9866

<http://www.fao.org/publications/sofi/2020/en/> - FAO Web Page for the report and information

<http://www.fao.org/3/ca9692en/CA9692EN.pdf> - Report

New York City reports no coronavirus deaths in 24-hour period for the first time, mayor says

- "Twenty four hours where no one dies, let's have many more days like that," the mayor added.
- Despite this good news, de Blasio also said there is a rising infection rates among people in their 20s, a trend he calls, "worrisome."
- What the city is doing now: The mayor said the city will be "doubling down" on young adults by offering more mobile testing vans, outreach programs and mask giveaways.
- The city, according to the mayor is issuing new guidance on face coverings, saying New Yorkers should wear a face covering as much as possible when around other people in an indoor setting that is not their home.

https://www.cnn.com/world/live-news/coronavirus-pandemic-07-13-20-intl/h_12b57a5907f0b30e5e476d8fd2711c3a

UPDATE

10 people died from coronavirus yesterday in New York, governor says

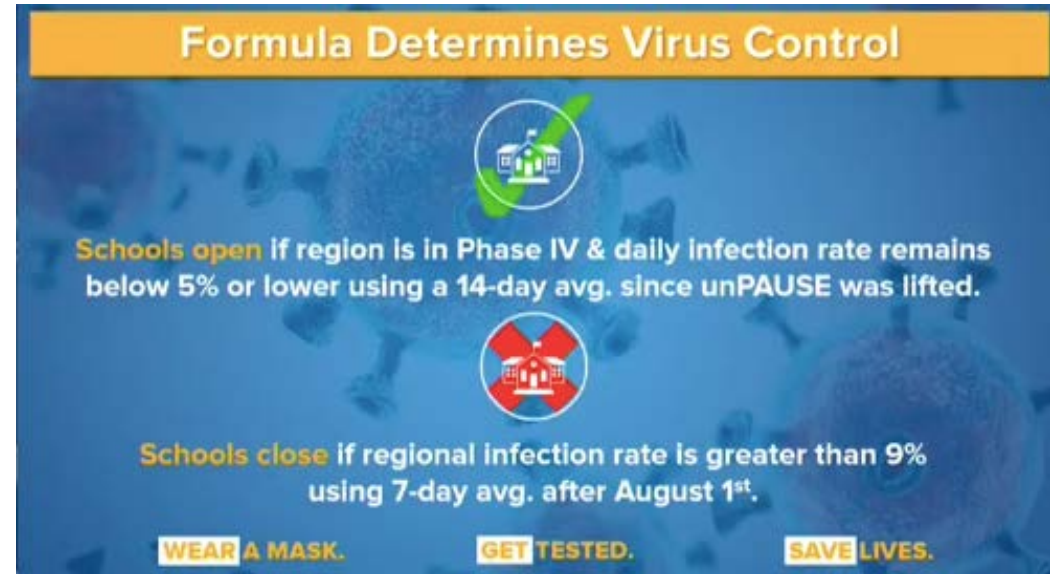
- New York Gov. Andrew Cuomo said that 10 more people have died from coronavirus in the state. He said, "we'd love to see that number at zero" but acknowledged it is a "very good place to be" compared to the daily death toll during the height of the pandemic.
- Earlier today, New York City Mayor Bill de Blasio announced that there had been no deaths in the city in a 24-hour period.
- "Twenty four hours where no one dies, let's have many more days like that," de Blasio said, calling the news "so striking and so moving."

https://www.cnn.com/world/live-news/coronavirus-pandemic-07-13-20-intl/h_4a13621685b7b3066e928523556a8ad4

New York will use this formula to decide whether to open the state's schools this fall

- New York Gov. Andrew Cuomo laid out the state's criteria for schools to reopen in the fall across the state.
- He said that for a region to reopen it must be in phase 4 of reopening and the daily infection rate must be below 5%, which means that "the virus is under control" and it is "safe to reopen," the governor said.
- Cuomo said that "if the infection rate goes over 9%...that means the virus is moving rapidly" and if that happens schools will be closed.
- "That's the green light and that's the red light," Cuomo said about the formula the state is going to use.
- The governor reiterated that the 700 school districts across the state are required to present their plan for reopening by the end of July.
- Cuomo said, "we'll make the first decision" on who can reopen and how during the week of Aug 1-7. "The day the school opens, we continue to monitor," he said.

https://www.cnn.com/world/live-news/coronavirus-pandemic-07-13-20-intl/h_68a75b89935100fabe961c24859bf3a1



ICUs are full at this Florida hospital. Here's how the staff is coping with surging hospitalizations.

- As coronavirus cases continue to soar in Florida, Memorial Hospital West in Pembroke Pines, Florida, is past its ICU capacity, and the team is now "creating space at every inch of the building," CEO Leah Carpenter says.
- "“We're at an ICU capacity of 103% and then if you just carve out the Covid ICU, it's at 180%. That's a 26% increase from last Monday,” Carpenter tells CNN."
- In an effort to manage the surge, the hospital has canceled all elective surgeries so it can redeploy staff in high priority areas, she added.
- "“We've set up tents outside of our emergency rooms to help with the capacity in the emergency room. We've converted many non-traditional areas in the building to patient care areas. For example, auditoriums, conference rooms, classrooms.”"
- Carpenter says the team has the resources it needs right now but "if the surge continues, I have significant concerns about whether or not we'll have what we need."
- She noted there are concerns about the availability ventilators, oxygen supply, dialysis equipment and personal protective equipment.

https://www.cnn.com/world/live-news/coronavirus-pandemic-07-13-20-intl/h_0e84dae7e8a24680430bd80828dc735c

One Good Thing

- Stories about the kindness of strangers and individuals who sacrifice for others during the coronavirus outbreak.

<https://apnews.com/OneGoodThing>

Information

PAHO Webinar: CO-EXISTING with COVID-19: An Epidemiological Perspective 15 Jul 2020 - 15 Jul 2020

<https://www.paho.org/en/events/co-existing-covid-19-epidemiological-perspective>

Mental Health and COVID-19 - Some good resources including a children's book

<https://www.paho.org/en/mental-health-and-covid-19>



LSU NCBRT Preparedness Podcast

<https://anchor.fm/lsu-ncbrt/episodes/13---Pandemic-Response-Food-Supply-Chain-eq37ur>

LSU NCBRT Preparedness Podcast: Food Safety Series

Episodes 11-13 of the podcast feature conversations about safety, supply and demand, and the future of the food industry after COVID-19. Guests include Steve Mandernach of the Association of Food and Drug Officials and Jerry Wotjala of the International Food Protection Training Institute.

Listen and subscribe to the LSU NCBRT Preparedness Podcast on Apple Podcasts, Spotify, or wherever you find podcasts.



U.S. Data

Covid-19 Case Cluster (past 48 hours)

<https://www.cdc.gov/covid-data-tracker/index.html>

Social Impact COVID-19 Events in the United States

1 EVENTS
Past 48 hours

Map of news reports related to social impact events resulting from the COVID-19 outbreak in the United States, such as school closures, localized outbreaks, state of emergency declarations, etc.

DATE RANGE

Past 48 hours

TYPE OF EVENT

COVID-19 Case Clusters

[About this Map](#) | Developed by [HealthMap](#)



Read about the Case Clusters:
[COVID-19 outbreak tied to a June golf tournament in Meridian](#)

COVID-19 Update



Situation: Upward trajectory in COVID-19 case count continues across 14 states, 21 states in a plateau status. 31,403 Federal employees deployed / activated; 2,292 FEMA employees deployed.

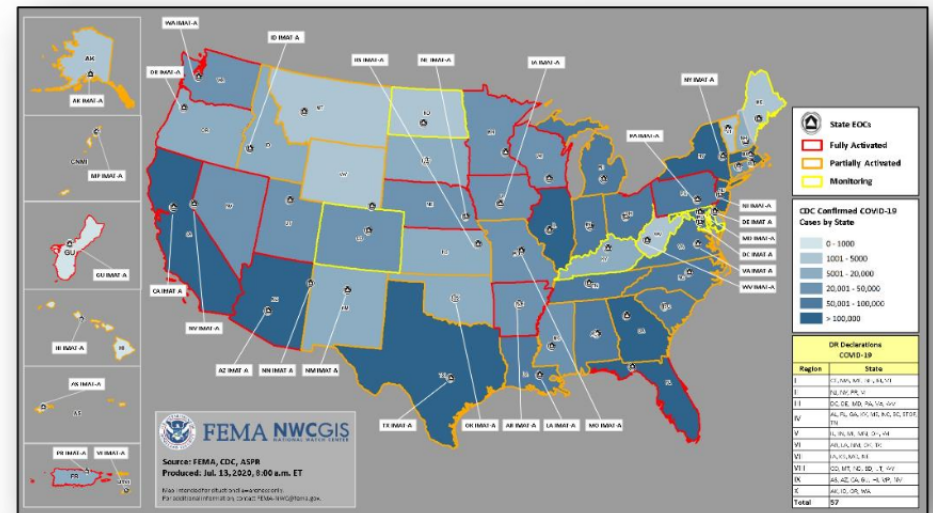
Nationwide Testing: 40,045,940 cumulative as of July 10.

COVID-19 positive cases continue to increase globally
([CDC COVID-19 Response Update as of July 12](#))

- Confirmed Cases of COVID-19
 - United States: **3,236,130 (+62,918)**
 - Worldwide: **12,322,395 (+219,983)**
- Deaths caused by COVID-19
 - United States: **134,572 (+906)**
 - Worldwide: **556,335 (+5,286)**

Response:

- NRCC at Level I
- Regions I, II, III, VI, & X RRCCs at Level III
- Regions VII, VIII, & IX RRCCs are rostered
- Regions IV, VII, VIII, & IX COVID-19 response being worked from the Virtual JFO
- NWC, all RWCs, and MOCs are monitoring



(COVID-19 SLB, July 10)

State Data

<https://covid19.ca.gov/>
<https://update.covid19.ca.gov/#top>
<https://www.cdph.ca.gov/Programs/CID/DCDC/Pages/Immunization/ncov2019.aspx#>

Statewide industry guidance to reduce risk

<https://covid19.ca.gov/industry-guidance/#top>
<https://www.cdph.ca.gov/Programs/CID/DCDC/Pages/Guidance.aspx>

Open sectors in counties with variance

<https://covid19.ca.gov/roadmap-counties/#track-data>

Data models

<https://covid19.ca.gov/data-and-tools/>



**SUPPORT FOOD BANKS
COVID-19**

Find a food bank near you:
www.CAFoodBanks.org

Volunteer at a food bank
Some food banks have lost upwards of 50% of volunteers and are in great need of volunteers to help pack and sort food. They are taking precautions to ensure volunteer safety.

Donate food and money
During this time organizations are running low on food items, help them stay well stocked by donating food and money

Be Safe
Most importantly, remember to follow the California Department of Public Health's guidelines. Visit covid19.ca.gov for more information.

CALIFORNIA NEEDS YOU

Visit californiansforall.ca.gov #CANeedsYou



<https://www.californiavolunteers.ca.gov/get-involved/covid-19/>

California Statistics

Total Population: 40,129,160

108,635

New Cases (Last 14 Days)

270.7 Per 100K

320,804 Total Cases

1,112

New Deaths (Last 14 Days)

2.8 Per 100K

7,017 Total Deaths

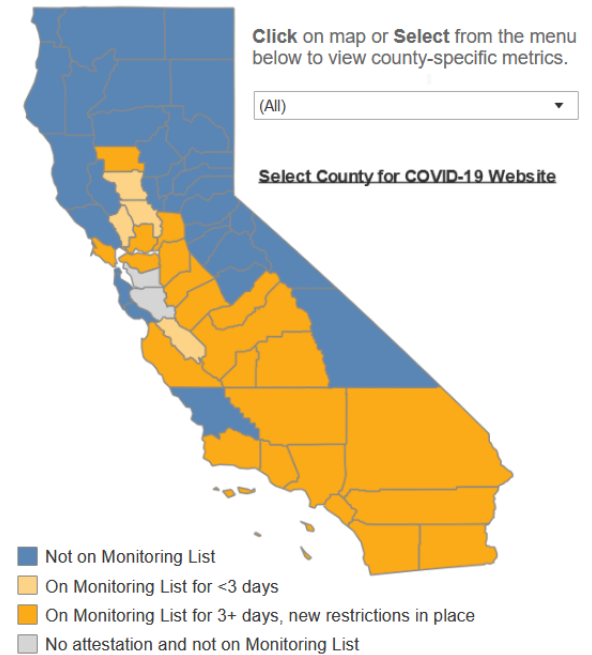
1,450,647

Tests Reported (Last 14 Days)

7.5% Test Positivity

2.6 Daily per 1,000 Residents

5,406,599 Total Tests Reported



Hospitals

Total vs Last 14 day change

374 Hospitals Reporting (71,675 Hospital Beds)

7,854

Hospitalized COVID-19 Patients
(Suspected + Positive)

1,898 Patients

31.9% Increase

2,020

ICU Hospitalized COVID-19 Patients
(Suspected + Positive)

418 Patients

26.1% Increase

33%

ICU Beds Available

71%

Ventilators Available

RUHS Public Health:



Emergency Management Department - COVID-19 Metrics

Last Updated:
 2020-07-11 13:30:00



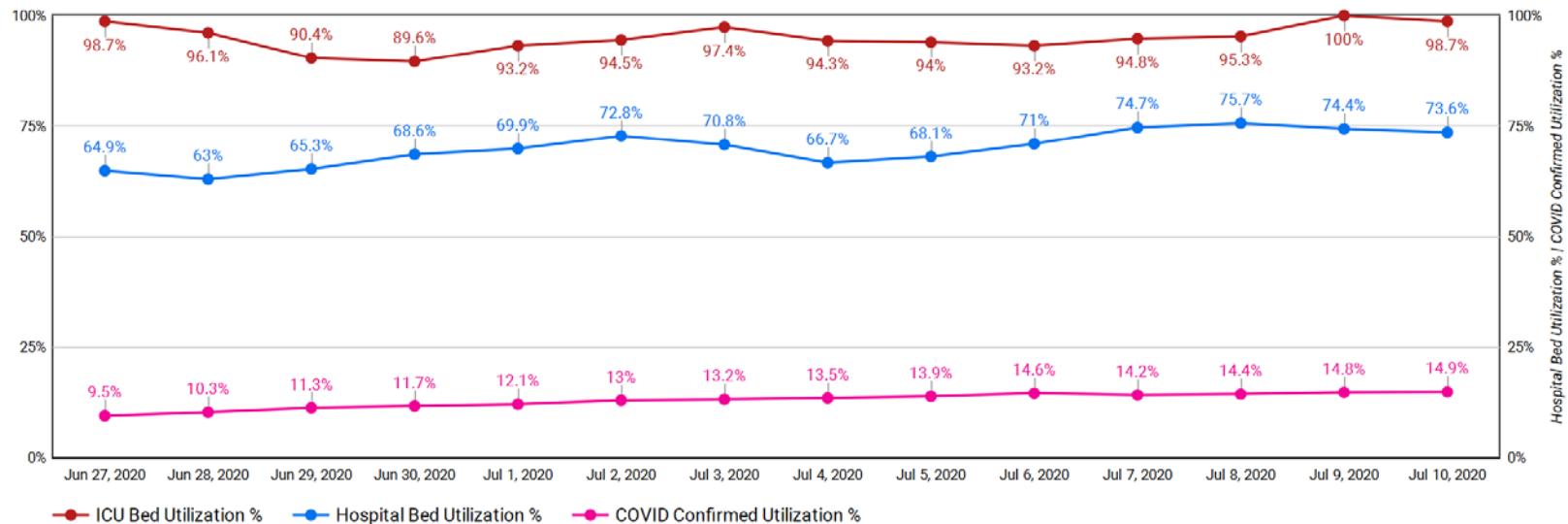
This collection of metrics is intended to help illustrate the impact of COVID-19 on the hospitals in Riverside County. The Emergency Management Department (EMD), in partnership with the Public Health Department, collects and tracks multiple metrics to assist in the County's response to COVID-19.

For the most up-to-date Riverside County Coronavirus information, please visit the Riverside County Public Health Department's website: <https://www.rivcoph.org/coronavirus>

Reporting of data runs 24 hours behind for State datasets, therefore the metrics below will normally be current with yesterday's data.

Hospitalized COVID-Confirmed Patients 530 † 0.8% from previous day	Riverside Co. Hospitals' Patient Census 2,621 † -1.1% from previous day	Ventilators In Use 208 † -2.3% from previous day	Available Ventilators at Hospitals 480 † 1.1% from previous day	ICU Beds In Use 380 † -1.3% from previous day
---	--	---	--	--

Licensed Hospital Bed/ICU Bed Utilization Trends



This page was created by the Riverside County Emergency Operations Center (EOC) to visualize hospital bed utilization rates compared with ICU bed utilization for the past two weeks. Hospitalized COVID-Confirmed Patient volume is received with a day's lag time.



COVID-19 Hospitalized Patients - Rolling Metrics

Last Updated:

2020-07-11 13:30:00



PREPARE



RESPOND



RECOVER

This page displays COVID-Confirmed hospitalized patient trends in Riverside County hospitals, with a focus on changes in 3-day and 7-day moving averages as outlined by the State of California's re-opening criteria for counties.

Currently Hospitalized COVID-Confirmed Patients in Riverside County
530

Currently Hospitalized Patients from Correctional Facilities
8

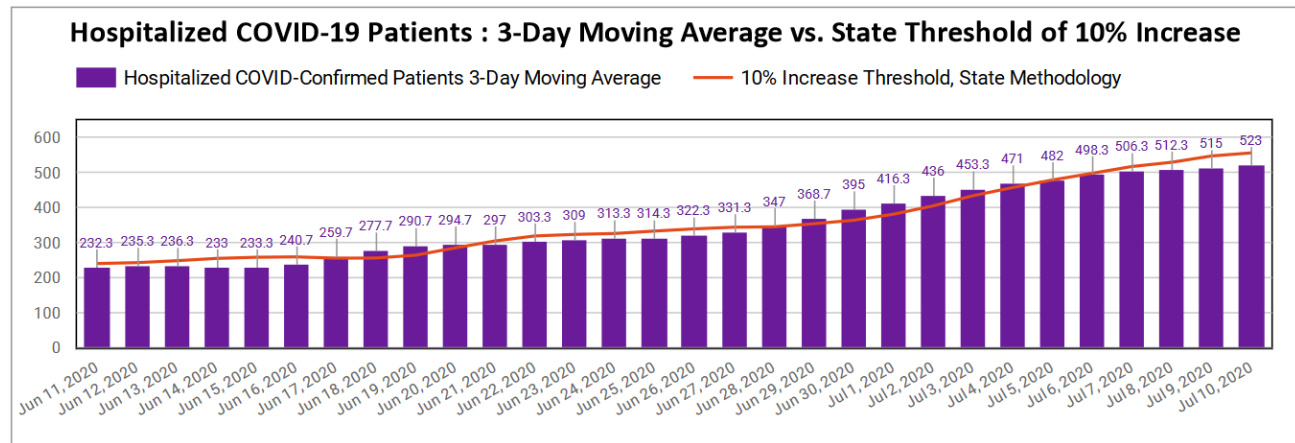
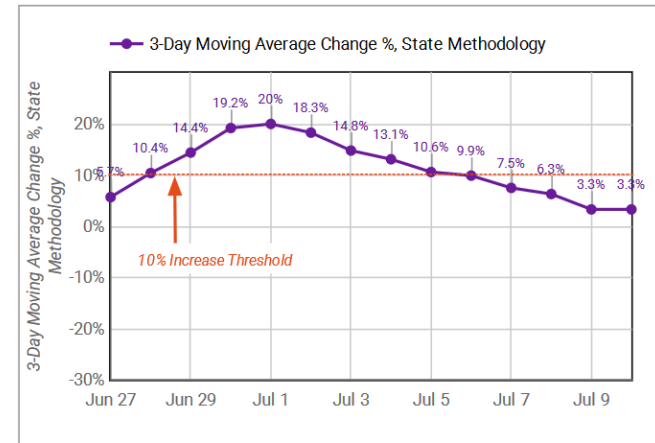
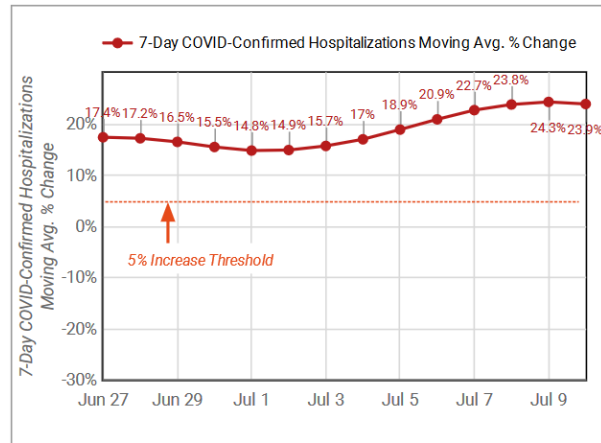
Currently Hospitalized Patients from Imperial County
4

Hospitalized COVID-Confirmed Patients, 3-Day Avg.
523

3-Day Mov. Avg. Change, State Methodology
3.3%

Daily Change in 3-Day Moving Average
1.6%

3-Day Moving Average State Methodology: Last 3 days' average compared to the prior 3 days' average, compared against new 3-Day average. The change, measured in percent, represents the difference in the current 3-day moving average vs. the prior 3-day moving average.





This page was created by the Emergency Operations Center (EOC) - EMS Team, to visualize COVID-19 trends in Riverside County. Please visit the Department of Public Health's Coronavirus page for updated local information on the Coronavirus response in Riverside County: <https://www.rivcoph.org/coronavirus>

Weather

COVID-19 Weather Support

Issued:

1000 AM July 12, 2020

IMPACT SCALE

●
None

●
Minor


●
Moderate

●
High

●
Extreme

Resources

- <https://www.weather.gov/spot/>
- <https://inws.ncep.noaa.gov>
- <https://www.wrh.noaa.gov/sgx/event/dsstable.php>

(858) 675 - 8705
(24/7, Restricted) 

Weather.gov/SanDiego

7-day Forecast for Counties in far Southwest CA

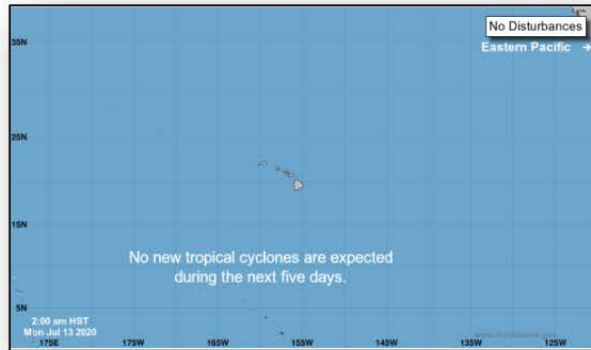
Period July 12 - July 19 (24-hr)	Orange	SW San Bernardino	All Deserts	Western Riverside	San Diego
Today	Hot Inland	Hot	Very Hot	Hot	Hot inland
Monday	None	Warm	Very Hot	Warm	None
Tuesday	None	None	Warm	None	None
Wednesday	None	None	Warm	None	None
Thursday	None	None	Warm	None	None
Friday	None	None	Warm	None	None
Saturday	None	None	Warm	None	None
Sunday	None	Warm	Warm	Warm	None

Forecast Discussion

The deserts will continue to see scorching heat through Monday with temperatures topping out near 115-120 degrees in the lower deserts and 100-107 in the High Desert. Hot conditions will continue today for inland locations with highs of 97-104 degrees expected. By tomorrow, cooler conditions will spread inland bringing temperatures west of the mountains closer to seasonal normals. In the deserts, seasonal temperatures are expected to return by Tuesday. Patchy dense fog is possible over the coastal zones the next few mornings. Temperatures are expected to begin to rise again next weekend.

Latest hazard threat table: <https://www.wrh.noaa.gov/sgx/event/dsstable.php>

Tropical Outlook – Five Day



Central Pacific



Eastern Pacific



Atlantic

Post-Tropical Cyclone Cristina (Advisory #26 as of 11:00 p.m. ET)

FINAL

- 1,075 miles W of the southern tip of Baja California, Mexico
- Moving W at 19 mph
- Maximum sustained winds 35 mph
- Expected to dissipate in a few days
- This is the last public advisory issued by the NHC

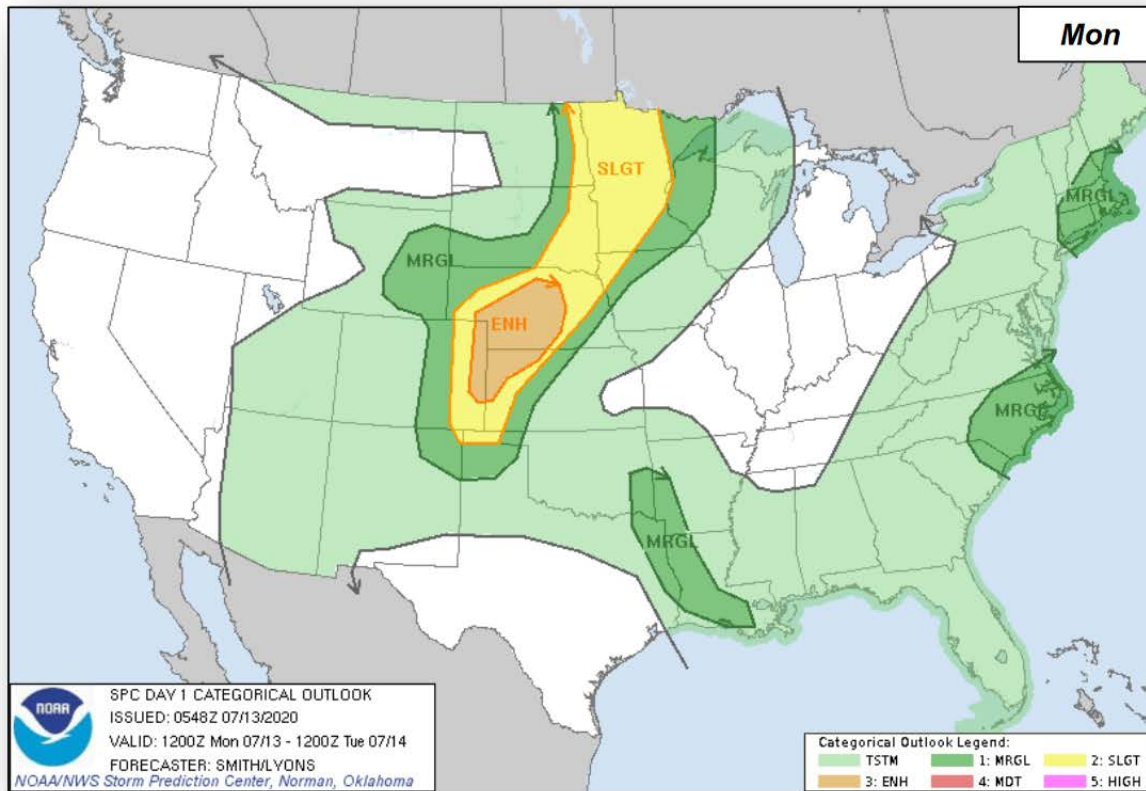
Disturbance 1 (as of 8:00 a.m. ET)

- Located less than 200 miles SSE of Socorro Island, Mexico
- Moving W at 20 mph
- Still has the potential to become a tropical depression in the next day or so
- Formation chance through 48 hrs.: Medium (60%)
- Formation chance through 5 days: Medium (60%)

Severe Weather Outlook



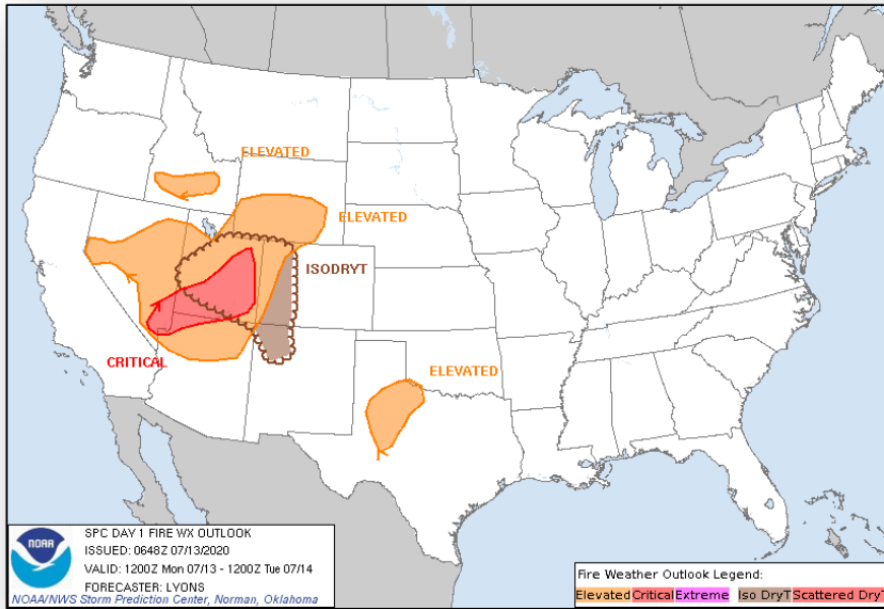
FEMA



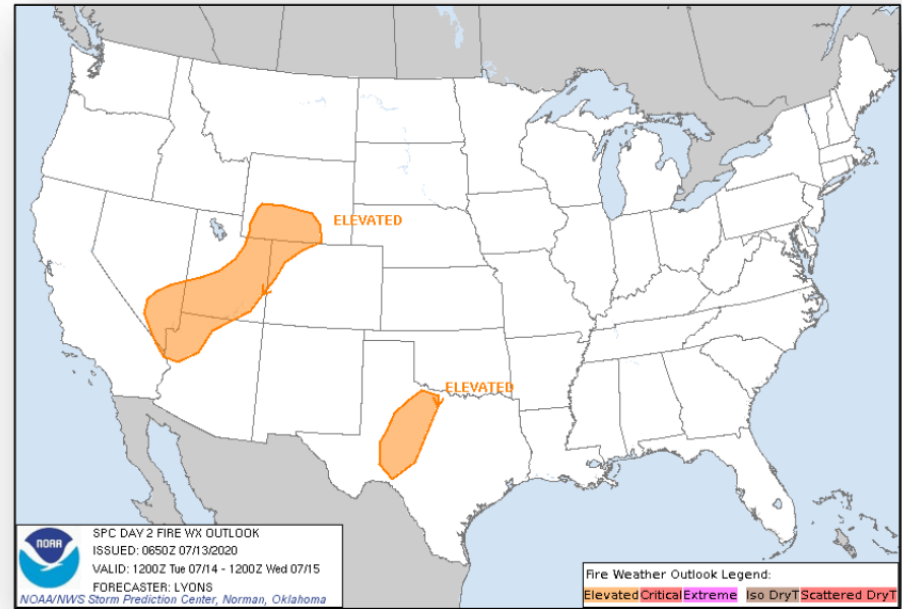
Fire Weather Outlook



FEMA



Today



Tomorrow