



**\*\*Extraordinary Assumptions:** There are a lot of different data sources in this report not all of them match but aid to provide an overall picture of the current situation. **COVID-19 Data Source Comparison** - [https://covid-19.splunkforgood.com/covid\\_19\\_datasource\\_comparison](https://covid-19.splunkforgood.com/covid_19_datasource_comparison)

# Daily Situation Summary

## Wednesday, July 1, 2020

### As of 10:00 AM

## COVID-19 by the Numbers

07/01/2020

	Riverside	Imperial	Kern	Los Angeles	Orange	San Bernardino	San Diego	San Luis Obispo	Sana Barbra	Ventura	California	United States	Global
Total Cases	17,683	5,512	4,613	100,846	13,682	11,643	13,834	544	2,933	2,794	222,917	2,581,229	10,321,689
New Cases	835	-1	72	2,843	469	299	501	13	61	144	6,367	35,664	136,315
Cases Per Capita	742	3,059	522	999	432	545	419	193	661	329	569	783	135
Total Deaths	440	81	70	3,326	330	249	361	1	29	45	5,980	126,739	507,435
New Deaths	2	0	0	21	4	0	0	0	1	1	44	370	3,573
Deaths Per Capita	18.46	44.95	7.93	32.94	10.43	11.66	10.93	0.36	6.54	5.31	15.28	38.42	6.63
% of State's Cases	7.93%	2.47%	2.07%	45.24%	6.14%	5.22%	6.21%	0.24%	1.32%	1.25%	8.64%	25.01%	
Currently in Hospitals	531	72	175	2,538	662	491	453	662	170	119	6612		
Total Hospital Beds	4,001	237	1,742	23,639	6,976	4,821	6,164	6,976	1,363	1,346	78,203		
Currently in ICU	117	16	60	526	192	142	158	192	35	22	1,617		
ICU Beds Available	105	5	69	1,170	386	120	335	386	78	43	3,564		
Case Fatality Rate	2.5%	1.5%	1.5%	3.3%	2.4%	2.1%	2.6%	0.2%	1.0%	1.6%	2.7%	4.9%	4.9%
Population*	2,383,286	180,216	883,053	10,098,052	3,164,182	2,135,413	3,302,833	281,455	443,738	848,112	39,148,760	329,867,424	7,659,348,000
% of Population	6.09%	0.46%	2.26%	25.79%	8.08%	5.45%	8.44%	0.72%	1.13%	2.17%	0.07%	0.0337%	

Sources: CDPH, WHO, CDC

The date for which case statistics and hospital data were reported. Hospital COVID data are self-reported through a portal managed by the California Hospital Association and pulled at 2pm. COVID case statistics are reported by local health departments to CalREDIE and are pulled at 2pm. Hospital data and case statistics are integrated by the California Department of Technology and made available through the Open Data Portal the following morning.

\*California-Demographics.com is made by Cubit – a demographic data provider & census.gov

### News

More detail on page 2

### US Data

More detail on page 7

### Riverside County

More detail on page 12

### Information

More detail on page 6

### State Data

More detail on page 11

### Weather

More detail on page 16

# News

## Inside China's COVID Cold War with the West

- Western allies have condemned China for using the smokescreen of the COVID-19 pandemic to impose a new security law in Hong Kong which violates its international commitments and threatens the "bastion of freedom".
- The dire warnings came from the United Kingdom, the United States, Australia and Canada as tensions between the embattled Chinese Communist Party and the west reached rock bottom.
- China's Foreign Minister Wang Yi says American politicians are taking China-US relations "hostage" and "pushing our two countries to the brink of a new Cold War" – and placing world stability "in jeopardy".
- "It's time for the US to give up this wishful thinking of changing China or stopping 1.4 billion people's historic march toward modernization," Mr Wang warned.
- As US Secretary of State Mike Pompeo put it – "the Chinese Communist Party chose to threaten Australia with economic retribution for the simple act of asking for an independent inquiry into the origins of the virus".
- China initially perceived the inquiry Australia pushed, which passed the World Health Assembly unanimously, as a witch-hunt created by Washington but eventually bowed to international pressure provided its World Health Organization "puppet" leads the review.

<https://www.skynews.com.au/details/ 6160192965001>

## UK resumes trials on hydroxychloroquine

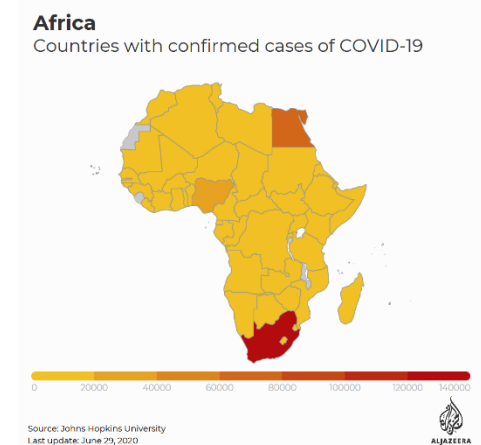
- The United Kingdom has resumed trials on a controversial drug used to treat coronavirus.
- Global trials of hydroxychloroquine were halted by the World Health Organization in early June and by UK and US regulators after testing indicated unpromising results.
- The anti-malaria drug caused concern within the medical community that it could potentially lead to a higher death rate as well as other side effects. Mango farmers in Pakistan have been hit hard by the coronavirus pandemic and locust attacks.

<https://www.skynews.com.au/details/ 6168368760001>

## Tracking Africa's coronavirus cases

- The outbreak of the new coronavirus has reached every nation in Africa, a continent of 1.2 billion people.
- As of July 1, the confirmed coronavirus death toll on the continent stood at 9,691, with fatalities including the former President of the Republic of the Congo Jacques Joachim Yhombi-Opango and Somalia's former Prime Minister Nur Hassan Hussein.
- Experts warn fragile healthcare systems in many African countries could be overwhelmed in the face of a severe outbreak of COVID-19, the highly infectious respiratory disease caused by the coronavirus.

<https://www.aljazeera.com/news/2020/04/tracking-africa-coronavirus-cases-200401081427251.html>



## **Coronavirus: Immunity levels 'higher than antibody tests suggest', according to Swedish study**

- In May, US regulators allowed the emergency use of the experimental drug that appears to help some patients recover faster.
- More people have got immunity to coronavirus than antibody tests suggest, according to new research from Sweden.
- Scientists found that those with mild COVID-19 or who didn't show symptoms still seem to have so-called "T-cells", although were keen to stress that their results had not yet undergone peer review.
- T-cells are a type of white blood cell specialized in recognizing viruses and are an essential part of the immune system, said Marcus Buggert, an assistant professor at the Center for Infectious Medicine.
- Around 30% of blood donors in May had those types of immunity cells - "a figure that's much higher than previous antibody tests have shown"

<https://news.sky.com/story/coronavirus-immunity-levels-higher-than-antibody-tests-suggest-according-to-swedish-study-12018799>

## **US buys nearly all stocks of coronavirus drug remdesivir**

- The United States has bought nearly all the available global supplies for the next three months of anti-viral drug remdesivir, one of two drugs that have proven to be effective against COVID-19.
- The US Department of Health Services (HHS) announced on Monday it had secured more than 500,000 treatment courses of remdesivir from drugmaker Gilead Sciences for US hospitals until September.
- The stocks make up 100 percent of Gilead's projected production for July and 90 percent each for August and September.
- "To the extent possible, we want to ensure that any American patient who needs remdesivir can get it."
- On Monday, Gilead said it would price remdesivir at \$2,340 per patient in the US and other wealthier nations. In 127 poor or middle-income countries, Gilead is allowing generic makers to supply the drug.

<https://www.aljazeera.com/news/2020/07/buys-stocks-coronavirus-drug-remdesivir-200701064641383.html>

## **Airlines defend moves to full-capacity flights**

- The airline industry defended American Airlines on Tuesday for its new policy to fill planes to capacity following criticism from Centers for Disease Control and Prevention (CDC) Director Robert Redfield over concerns about spreading the coronavirus.
- Redfield said there was "substantial disappointment with American Airlines" about the move in a Senate hearing on Tuesday following a question from Sen. Bernie Sanders (I-Vt.) on the policy.
- Airlines for America (A4A), which represents and advocates for major U.S. airlines, defended the decision to fill planes on the basis that maintaining social distancing isn't possible on planes anyway. American Airlines is a member of A4A.
- "You can't social distance on an airplane. We believe there are safety measures in place on a multilevel basis that makes flying safe, in fact safer than many other activities," A4A CEO Nicholas E. Calio told reporters on a press call following Redfield's statement.

<https://thehill.com/news-by-subject/transportation-infrastructure/505222-airlines-defend-move-to-full-capacity-flights>

## **Microsoft to help 25 million people worldwide acquire new digital skills needed for the COVID-19 economy**

- Microsoft Corp. on Tuesday announced a new global skills initiative aimed at bringing more digital skills to 25 million people worldwide by the end of the year.

- The announcement comes in response to the global economic crisis caused by the COVID-19 pandemic. Expanded access to digital skills is an important step in accelerating economic recovery, especially for the people hardest hit by job losses.
- This initiative, detailed on the Official Microsoft Blog, includes immediate steps to help those looking to reskill and pursue an in-demand job and brings together every part of the company, combining existing and new resources from LinkedIn, GitHub and Microsoft. This includes:
  - The use of data to identify in-demand jobs and the skills needed to fill them.
  - Free access to learning paths and content to help people develop the skills these positions require.
  - Low-cost certifications and free job-seeking tools to help people who develop these skills pursue new jobs.

<https://news.microsoft.com/2020/06/30/microsoft-to-help-25-million-people-worldwide-acquire-new-digital-skills-needed-for-the-covid-19-economy/>

## Future of Sports: Socially-Distanced Spectators, College Cash Crunch

- Sports are making a comeback as the coronavirus pandemic forces professional leagues and college divisions to adapt to new safety measures -- including playing without fans in the seats. Cheddar's Brad Smith does a deep dive into what the future of sports will look like.

<https://cheddar.com/media/the-future-of-sports-amid-the-coronavirus-pandemic>



## Newsom Orders Bars Closed in LA County, Recommends Three Other SoCal Counties to Close Nightlife

- Gov. Gavin Newsom ordered all bars and nightlife to close in seven counties, including Los Angeles County, and recommended that eight other counties close their nightlife as well on Sunday due to the rising spread of coronavirus.
- The eight other counties included Ventura, Riverside and San Bernardino counties. Newsom tweeted the message Sunday afternoon.
- "Californians must remain vigilant against this virus," he added in a statement issued later. "COVID-19 is still circulating in California, and in some parts of the state, growing stronger. That's why it is critical we take this step to limit the spread of the virus in the counties that are seeing the biggest increases. Each of us has the power to limit the spread of this virus. Wear a face covering and keep physically distant outside the home. Don't gather in groups, and if you are older or have a condition that puts you at higher risk of COVID-19, protect yourself by staying home."

<https://www.nbclosangeles.com/news/coronavirus/newsom-orders-bars-closed-in-la-county-recommends-three-other-socal-counties-to-close-nightlife/2387539/>

## Newsom says 3,500 more inmates may be released to slow spread of coronavirus in California prisons

- Gov. Gavin Newsom on Monday announced the state may release more inmates to mitigate coronavirus outbreaks in prisons.
- The state previously released 3,500 people who were within 150 days of release, and Newsom said officials have identified 3,500 more who could be released under the same criteria.

- More than 1,000 of the nearly 2,600 California prisoners who have tested positive for the coronavirus are in San Quentin State Prison in the San Francisco Bay Area. Forty percent of the prisoners there are considered “medically vulnerable,” and 110 of them may be eligible for the earlier release, Newsom said.

<https://ktla.com/news/california/newsom-says-3500-more-inmates-may-be-released-to-slow-spread-of-coronavirus-in-california-prisons/>

## State puts Orange County on coronavirus watch list

- Coronavirus is spreading quickly enough locally that on Monday state health officials put Orange County on a watch list of counties in danger of facing new lockdown orders.
- In its assessment, California’s Dept. of Public Health cited outbreaks at assisted living facilities, memory care facilities and other communal homes in Orange County as key drivers behind the boost in positive tests for coronavirus and an upturn in hospitalizations.
- The state health department also formed an action plan that Orange County leaders can use to slow the disease and avoid renewed lockdown orders.
- Orange County is one of 19 California counties to be put on the state’s monitoring list, which closely tracks metrics such as rates of new cases per 100,000 residents, averages of positive tests and new hospitalizations. Others include Los Angeles, Riverside and San Bernardino counties

<https://www.ocregister.com/2020/06/29/state-puts-orange-county-on-coronavirus-watch-list/>

## LA and Ventura County Beaches Closed for Fourth of July Weekend

- **LA County**
  - All LA County beaches, piers, access points and bike paths were to close for the Fourth of July weekend, county officials announced Monday.
  - Though the LA County Public Health Department did not announce the sweeping step in an early afternoon news conference, despite being asked. The Los Angeles County Sheriff’s Department Lost Hills Station made the announcement via Twitter later Monday afternoon.
- **Ventura County**
  - Ventura County will close local beaches over July Fourth weekend as coronavirus infections continue to rise locally and statewide.
  - The Ventura countywide beach closure will run from 5 a.m. Friday through 5 a.m. Monday and includes parking lots and restrooms, public health officials said late Tuesday. Fireworks displays also have been canceled throughout the county.

<https://www.vcstar.com/story/news/special-reports/outdoors/2020/06/30/coronavirus-ventura-county-beaches-closed-4th-of-july-weekend-expected/3285346001/>

<https://www.nbctv.com/news/local/la-county-beaches-closed-for-fourth-of-july-weekend/2388065/>

<https://abc7.com/orange-county-beaches-july-4th-2020-of-laguna-beach/6287251/>

## One Good Thing

- Stories about the kindness of strangers and individuals who sacrifice for others during the coronavirus outbreak.

<https://apnews.com/OneGoodThing>



# Information



## Clear communication promotes confidence during a pandemic.

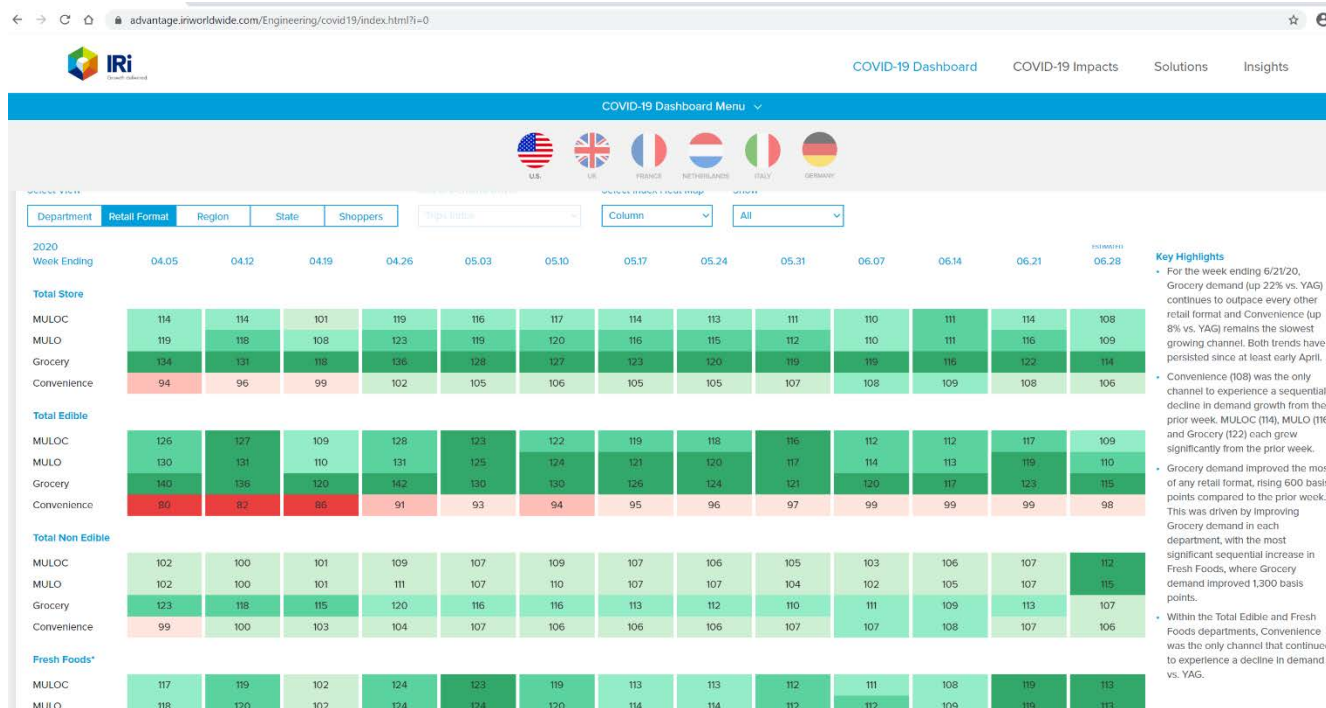
<https://www.osha.gov/Publications/OSHAHS-3747.pdf>

## A lot of good flyers and infographics

<https://www.rivcoph.org/Public-Health-Toolkits-Archive#schools>

## CPG and Retail Insights to Manage the Impact of COVID-19

<https://advantage.iriworldwide.com/Engineering/covid19/?i=0>



# U.S. Data

## Covid-19 Case Cluster (past 48 hours)

<https://www.cdc.gov/covid-data-tracker/index.html>

### Social Impact COVID-19 Events in the United States

**9** EVENTS  
Past 48 hours

Map of news reports related to social impact events resulting from the COVID-19 outbreak in the United States, such as school closures, localized outbreaks, state of emergency declarations, etc.

DATE RANGE

Past 48 hours

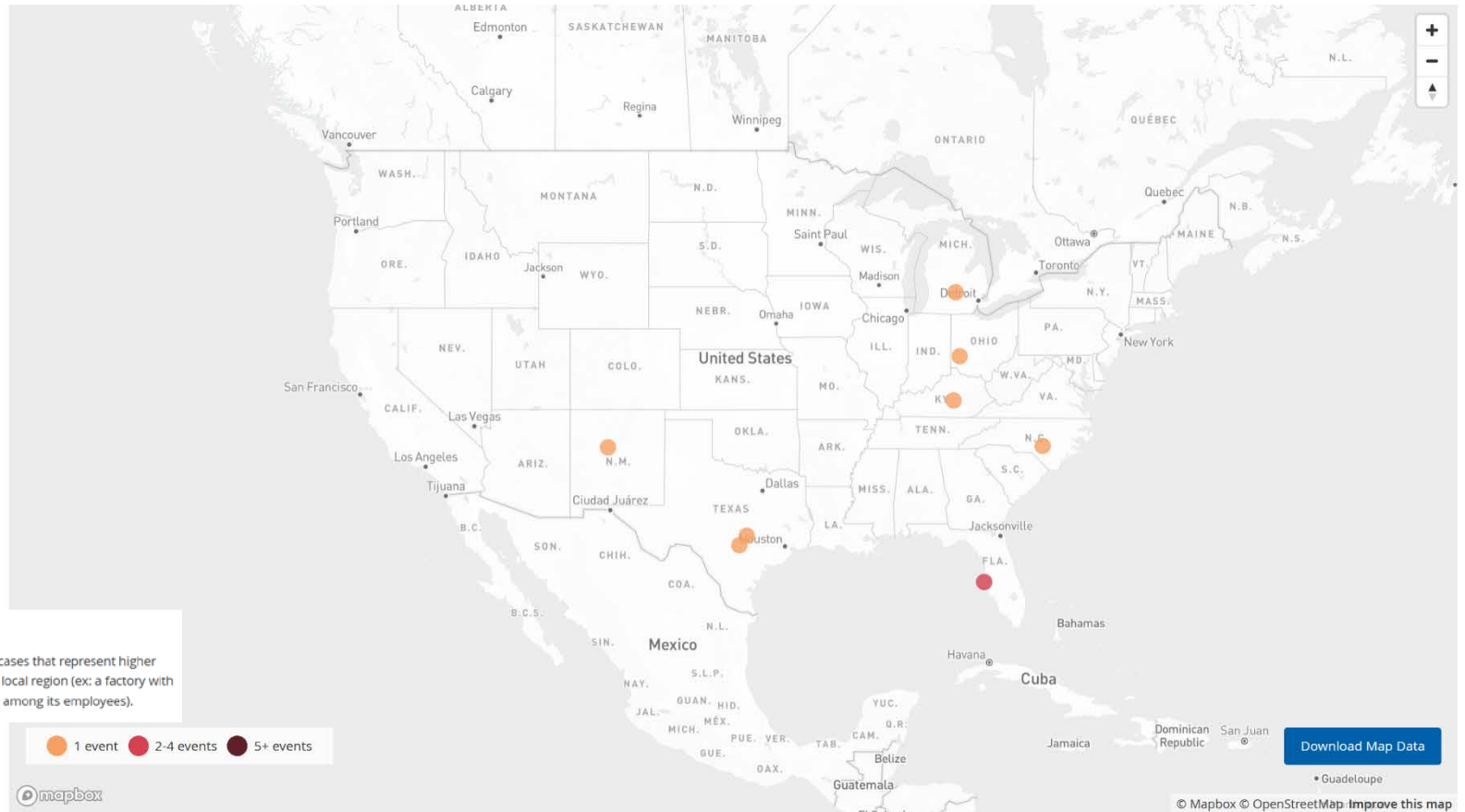
TYPE OF EVENT ?

COVID-19 Case Clusters

[About this Map](#) | Developed by HealthMap

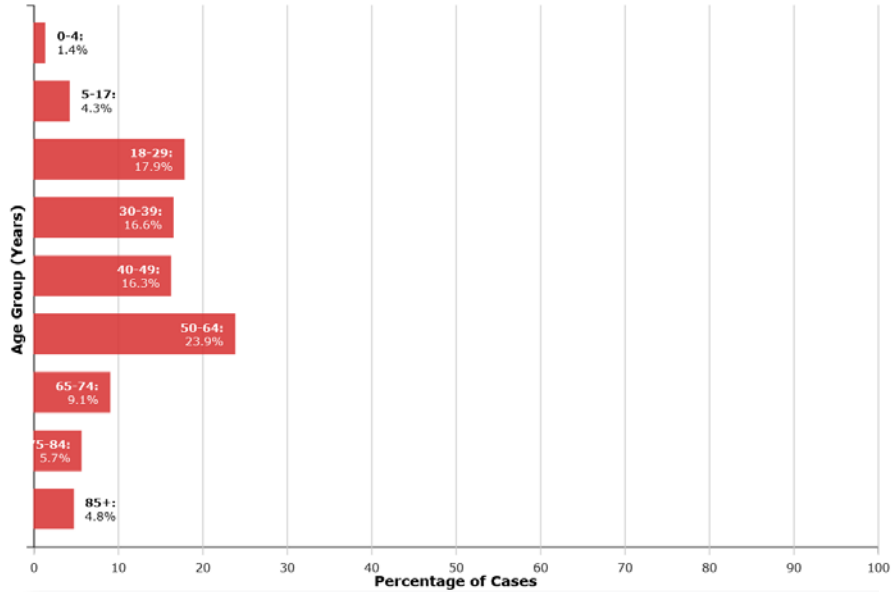
#### COVID-19 Case Clusters

The article describes a cluster of COVID-19 cases that represent higher than expected COVID-19 incidence within a local region (ex: a factory with a higher than expected COVID-19 incidence among its employees).



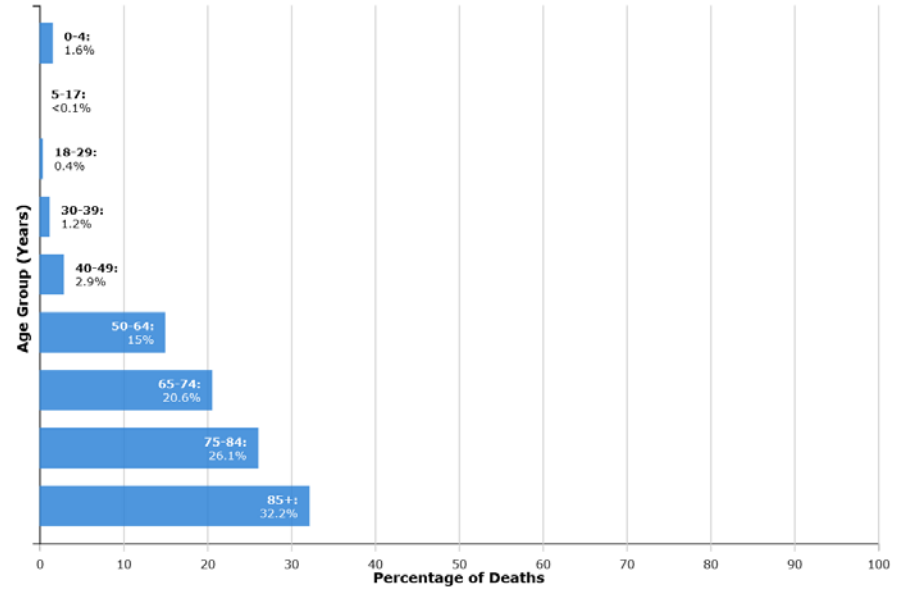
**Cases by Age Group:**

Data from 2,254,931 cases. Age group was available for 2,190,207 (97%) cases.



**Deaths by Age Group:**

Data from 101,318 deaths. Age group was available for 100,922 (99%) deaths.

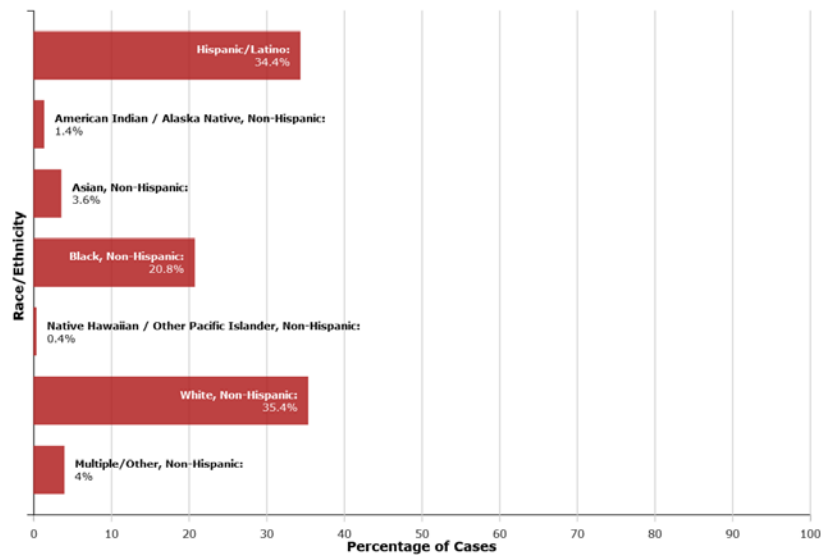


**Cases by Race/Ethnicity:**

Data from 2,121,440 cases. Race/Ethnicity was available for 1,047,459 (49%) cases.



All Age Groups

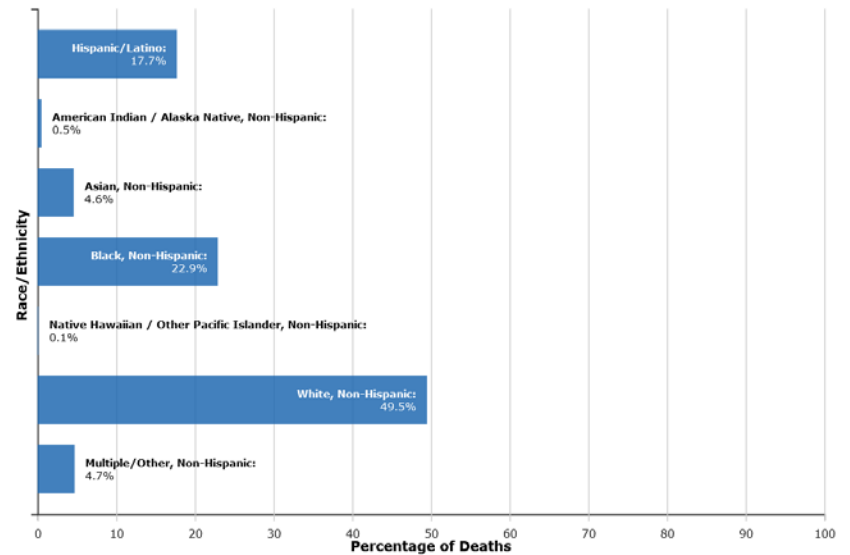


**Deaths by Race/Ethnicity:**

Data from 100,971 deaths. Race/Ethnicity was available for 81,999 (81%) deaths.



All Age Groups





# COVID-19 Update



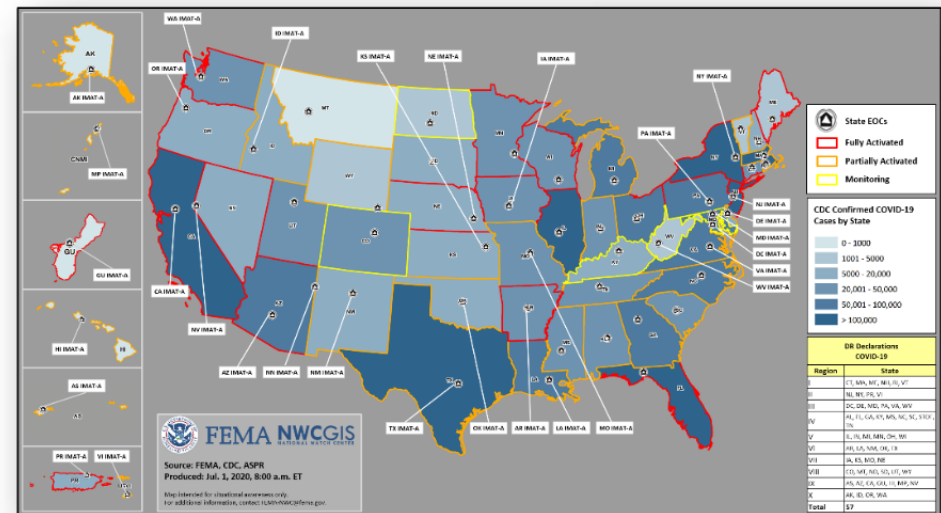
**Situation:** FEMA and HHS continue to lead the COVID-19 Response / Recovery efforts. 32,362 (+4,080) Federal employees deployed / activated; 2,430 (-57) FEMA employees deployed. Nationwide Testing: 33,601,847 (+1,304,159) cumulative (as of June 30).

Cases of COVID-19 continue to increase throughout the world

- Confirmed Cases of COVID-19
  - United States: 2,581,229 (+35,664)
  - Worldwide: 10,021,401 (+178,328)
- Deaths caused by COVID-19
  - United States: 126,739 (+370)
  - Worldwide: 499,913 (+4,153)

## Response:

- NRCC at Level I
- Regions I and II RRCCs at Level II
- Regions III, VI, & X RRCCs at Level III
- Regions VII, VIII, & IX RRCCs are rostered
- Regions IV, VII, VIII, & IX COVID-19 response being worked from the Virtual JFO
- NWC, all RWCs, and MOCs at Steady State; monitoring



(FEMA COVID-19 SLB, June 30)

# FEMA Common Operating Picture



FEMA

<b>FEMA HQ</b>		<b>NWC</b>		<b>NRCC</b>	
Monitoring		Monitoring		Level I	
<b>FEMA REGIONS</b>					
<b>WATCH</b>		<b>RRCC</b>			
Monitoring	I	Level II			
Monitoring	II	Level II			
Monitoring	III	Level III			
Monitoring	IV	Rostered			
Monitoring	V	Level III			
Monitoring	VI	Level III			
Alt Location	VII	Rostered			
Monitoring	VIII	Rostered			
Alt Location	IX	Rostered			
Monitoring	X	Level III			
<b>Notes:</b>					
NRCC and RRCCs activated for COVID-19		GA: Flooding MS: Flooding PR : Earthquake TN: Tornadoes			
RIX RWC: At Alt. Location until 9:00 a.m. ET today		All EOCs activated for COVID-19			

<b>Major Disasters (DR): 104</b>	<b>Emergency Disasters (EM): 98</b>	<b>JFOs: 9 / VJFOs: 17</b>	<b>Staging Area</b>	<b>Distribution Center (DC)</b>	<b>Declared County (non-COVID-19 Declarations)</b>
<b>Fully Activated</b>	<b>Partially Activated</b>	<b>Monitoring</b>			

**Region X COVID DRs**

4481-DR-WA  
4499-DR-OR  
4533-DR-AK  
4534-DR-ID  
4534-DR-ID  
FCO: Michael F. O'Hare  
VFO: Bothell, WA  
RX IMAT

4538-DR-WA  
FCO: Timothy B. Manner  
VFO: Camp Murray, WA

4519-DR-OR  
FCO: Dolph A. Uiemont  
VFO: Salem, OR

**Region VIII COVID DRs**

4498-DR-CO  
4508-DR-MT  
4509-DR-MD  
4525-DR-UT  
4527-DR-SD  
4535-DR-WY  
FCO: Lee K. dePalo  
VFO: Denver, CO

**Region IX COVID DRs**

4482-DR-CA  
4495-DR-GU  
4510-DR-HI  
4511-DR-CNMI  
4523-DR-NV  
4524-DR-AZ  
4537-DR-AS  
FCO: Robert J. Fenton  
VFO: Oakland, CA

4420-DR-NE  
FCO: Thomas J. Dargan  
VFO: Lincoln, NE

4435/4451-DR-MO  
FCO: John Brogan  
VFO: Kansas City, MO

**Region VI COVID DRs**

4484-DR-LA  
4485-DR-TX  
4518-DR-AR  
4529-DR-NM  
4530-DR-OK  
FCO: George A. Robinson  
VFO: Denton, TX

4440/4463/4467/  
4469-DR-SD  
FCO: Jon K. Huss  
VFO: Sioux Falls, SD

4414/4442-DR-MN  
4459/4477-DR-WI  
FCO: John F. Boyle  
4424/4447-DR-OH  
4461-DR-IL  
FCO: Steven W. Johnson  
VFO: Springfield, IL

**Region VII COVID DRs**

4483-DR-IA  
4490-DR-MO  
4504-DR-KS  
4521-DR-NE  
FCO: Paul Taylor  
VFO: Kansas City, MO

RVII IMAT

**Region V COVID DRs**

4489-DR-IL  
4494-DR-MI  
4507-DR-OH  
4515-DR-IN  
4520-DR-WI  
4531-DR-MN  
FCO: James K. Joseph  
VFO: Chicago, IL

3525-EM-MI  
FCO: Kevin M. Sligh  
VFO: TBD

4372/4379-DR-MA  
4410-DR-CT  
4445/4474-DR-VT  
4457-DR-NH  
FCO: James McPherson  
VFO: Dover, NH

**Region I COVID DRs**

4496-DR-MA  
4500-DR-CT  
4505-DR-NI  
4516-DR-NH  
4522-DR-ME  
4532-DR-VT  
FCO: W. Russell Webster  
VFO: Maynard, MA  
RI IMAT (Boston, MA)

4472-DR-NY  
FCO: Seamus K. Leary  
VFO: Albany, NY

**Region II COVID DRs**

4480-DR-NY  
FCO: Thomas Von Essen  
VFO: Albany, NY

4488-DR-NJ  
FCO: Thomas Von Essen  
VFO: West Trenton, NJ

4540-DR-KY  
FCO: Kevin A. Wallace  
VFO: Frankfort, KY

4393/4412/4465/  
4543-DR-NC  
FCO: Elizabeth Turner  
VFO: Raleigh, NC

4427/4471/4476/  
4541-DR-TN  
FCO: Myra M. Shird  
VFO: Nashville, TN

**Region III COVID DRs**

4491-DR-MD  
4502-DR-DC  
4506-DR-PA  
4512-DR-VA  
4517-DR-WV  
4526-DR-DE  
FCO: MaryAnn Tierney  
VFO: Philadelphia, PA

4473-DR-PR  
FCO: Alex Amparo  
VFO: Ponce, PR

4400-DR-GA  
FCO: Terry L. Quarles  
4428-DR-KY  
FCO: Kevin A. Wallace  
4464/4479/4542-DR-SC  
FCO: Allan Jarvis  
4478/4536-DR-MS  
FCO: Jose M. Giroit  
4546-DR-AL  
FCO: Terry L. Quarles  
VFO: Atlanta, GA

4399-DR-FL  
FCO: Brett Howard  
VFO: Panama City, FL

**N-IMATs**  
3 Teams

Red	
Blue	
Gold	

**R-IMATs**  
≥ 7 Teams

I	RRCC
II	
III	
IV-1	
IV-2	Virtual SC
V	
VI-1	
VI-2	
VII	VJFO-COVID
VIII	
IX-1	
IX-2	
X	RRCC
FMC	PMC
NMC	Deployed

<b>Team:</b>	<b>US&amp;R</b>	<b>MERS</b>	<b>FCOs</b>	<b>FDRCs</b>	<b>IM WORKFORCE</b>	<b>IM CADRE AVAILABILITY SUMMARY</b>				
<i>Status</i>	>65%	>66%	= 2 Type I	= 2		<i>Cadres with 25% or Less Availability</i>				
Assigned:	28	36	47	11	13,684 ▼					
Unavailable:	2 (-1)	0	1	0	2,877 ▼	EHP 24% (160/654); ER 23% (18/77); FL 18% (29/162); FM 25% (65/259); OPS 25% (76/306); PA 21% (657/3,110); PLAN 23% (98/422); SAF 16% (9/56)				
Deployed:	0	0	38	9	5,673 ▼					
Available:	26 (+1)	36	8	2	5,134 / 38% ▲					

# State Data

<https://covid19.ca.gov/>  
<https://update.covid19.ca.gov/#top>  
<https://www.cdph.ca.gov/Programs/CID/DCDC/Pages/Immunization/ncov2019.aspx#>

## Statewide industry guidance to reduce risk

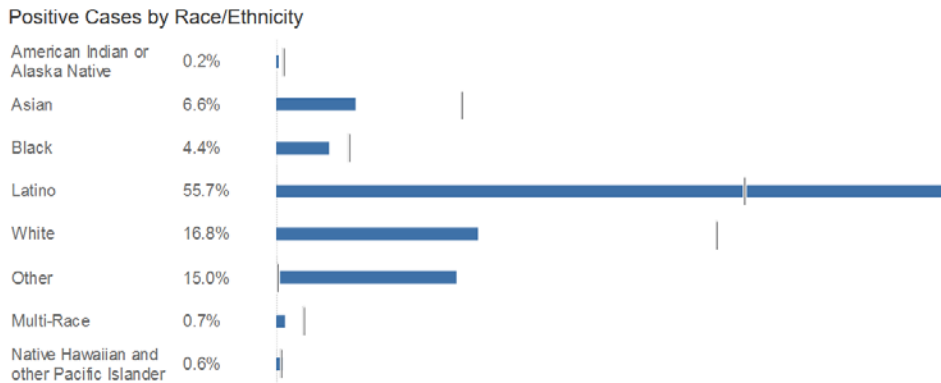
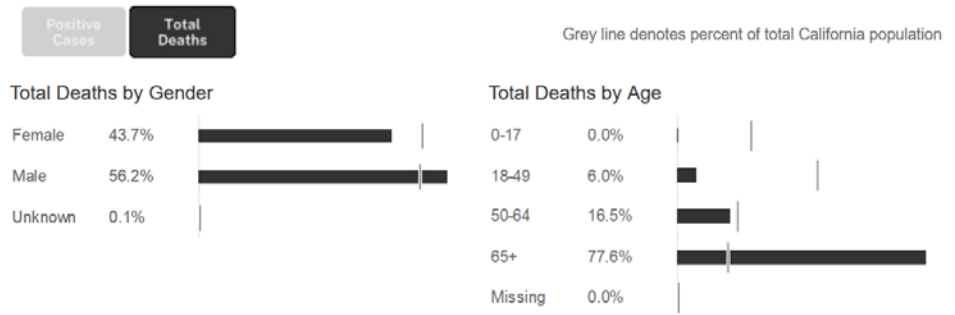
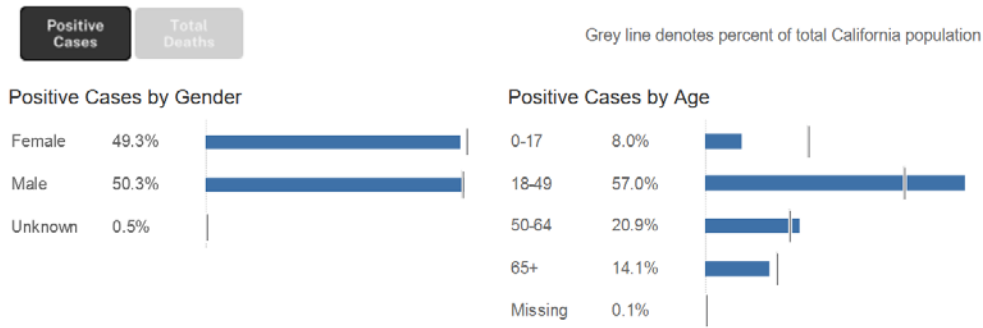
<https://covid19.ca.gov/industry-guidance/#top>  
<https://www.cdph.ca.gov/Programs/CID/DCDC/Pages/Guidance.aspx>

## Open sectors in counties with variance

<https://covid19.ca.gov/roadmap-counties/#track-data>

## Data models

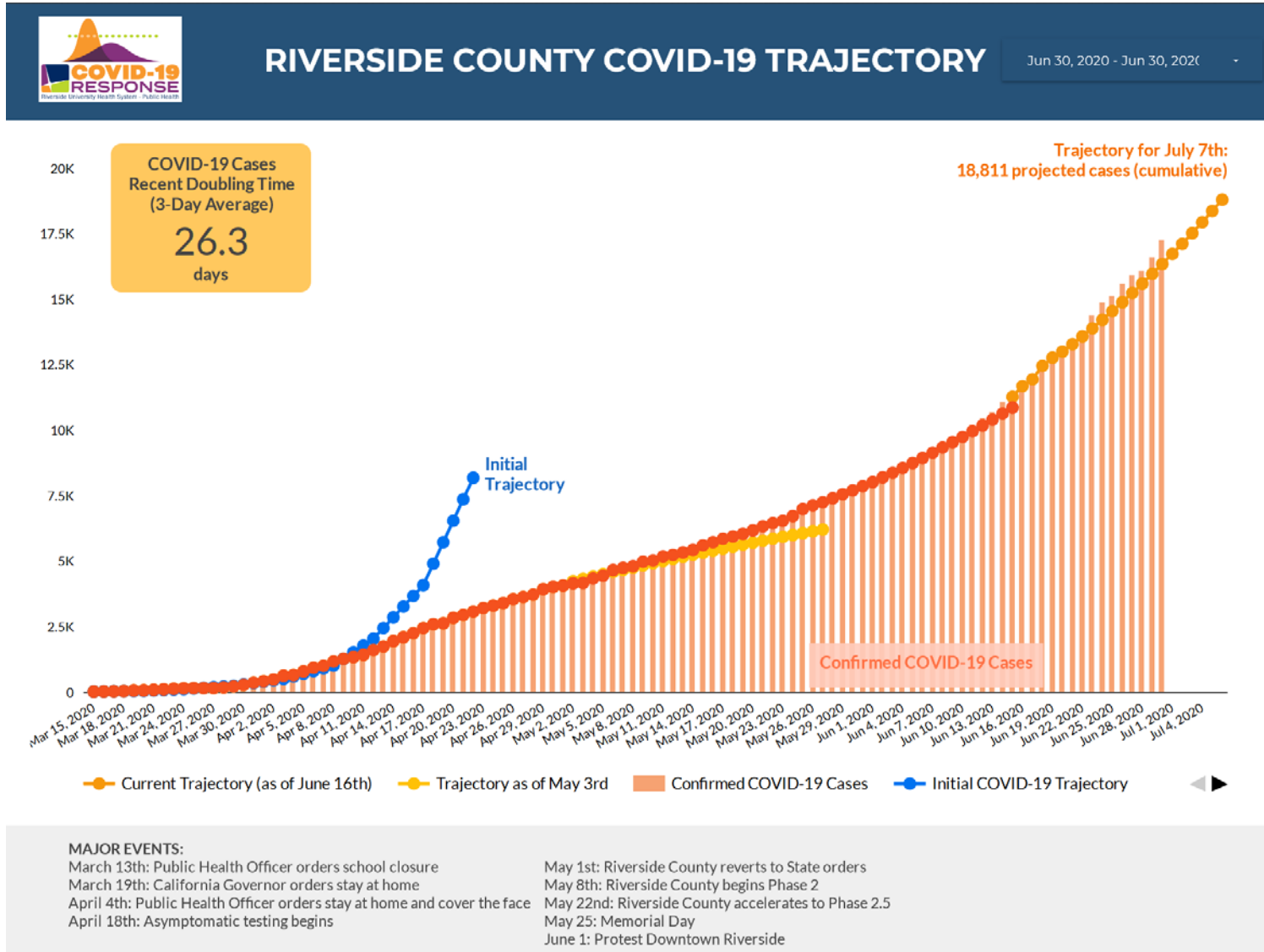
<https://covid19.ca.gov/data-and-tools/>



# Riverside County

<https://www.rivcoph.org/coronavirus>

**RUHS Public Health:** [Bars ordered closed in Riverside County in response to upswing in coronavirus cases](#)  
Celebrate at home this Fourth of July – without visitors [English](#) / [Spanish](#)



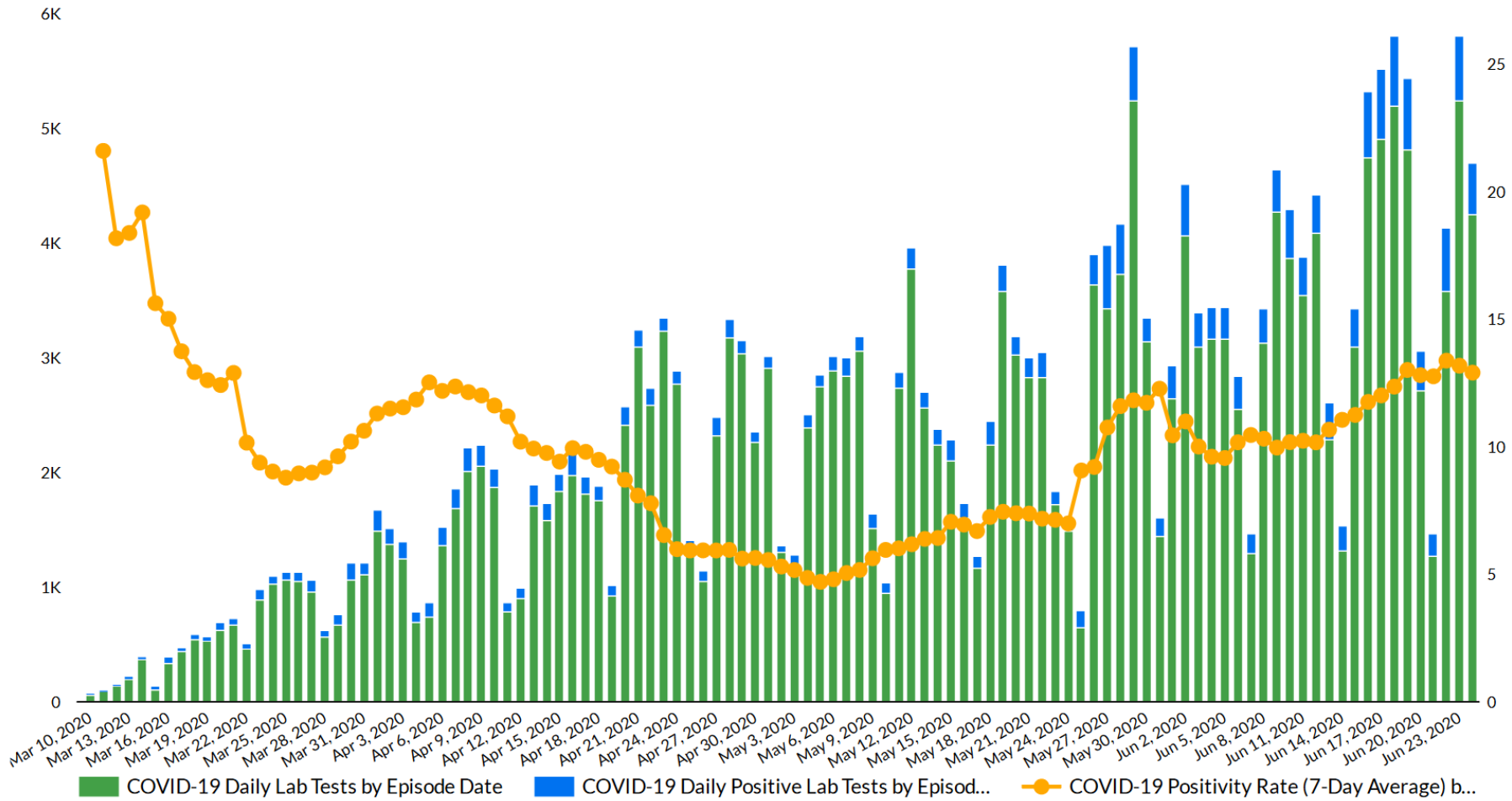


# RIVERSIDE COUNTY COVID-19 CASES

**POSITIVE\***  
**20,828**

**TESTS RESULTED\***  
**230,892**

Date	Recent Positivity Rate
Jun 24, 2020	12.9
Jun 23, 2020	13.2
Jun 22, 2020	13.4



\*Based on case report date (Episode Date)

\*Numbers are based on case report date (Episode Date) and may slightly differ from confirmed case counts





# Emergency Management Department - COVID-19 Metrics

Last Updated:

2020-06-30 15:50:00



PREPARE



RESPOND



RECOVER

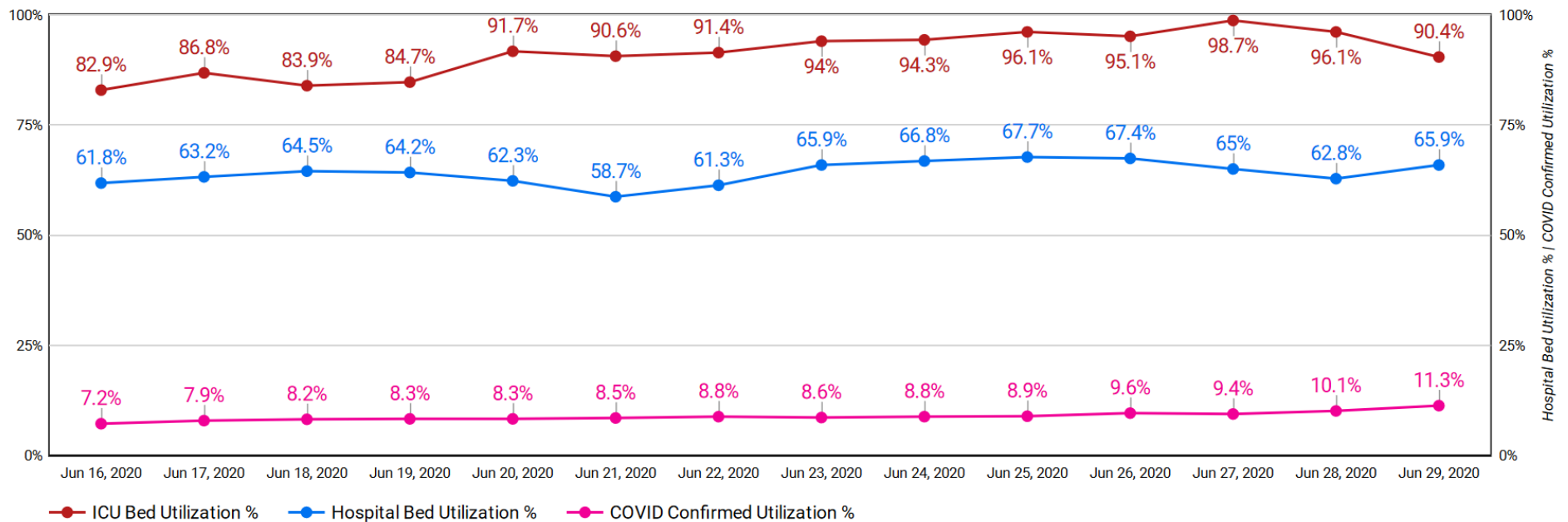
This collection of metrics is intended to help illustrate the impact of COVID-19 on the hospitals in Riverside County. The Emergency Management Department (EMD), in partnership with the Public Health Department, collects and tracks multiple metrics to assist in the County's response to COVID-19.

For the most up-to-date Riverside County Coronavirus information, please visit the Riverside County Public Health Department's website: <https://www.rivcoph.org/coronavirus>

Reporting of data runs 24 hours behind for many facilities, therefore the metrics below will normally be current with yesterday's data.

Hospitalized COVID-Confirmed Patients <b>403</b> ↑ 10.4% from previous day	Riverside Co. Hospitals' Patient Census <b>2,345</b> ↑ 4.5% from previous day	Ventilators In Use <b>162</b> ↓ -5.8% from previous day	Available Ventilators at Hospitals <b>515</b> ↑ 1.8% from previous day	ICU Beds In Use <b>348</b> ↓ -5.9% from previous day
--	---	---	--	--

## Licensed Hospital Bed/ICU Bed Utilization Trends



This page was created by the Riverside County Emergency Operations Center (EOC) to visualize hospital bed utilization rates compared with ICU bed utilization for the past two weeks. Hospitalized COVID-Confirmed Patient volume is received with a day's lag time.



# COVID-19 Hospitalized Patients - Rolling Metrics

Last Updated:  
2020-06-30 15:50:00



**PREPARE**



**RESPOND**



**RECOVER**

This page displays COVID-Confirmed hospitalized patient trends in Riverside County hospitals, with a focus on changes in 3-day and 7-day moving averages as outlined by the State of California's re-opening criteria for counties.

**Currently Hospitalized COVID-Confirmed Patients in Riverside County**  
**403**

Currently Hospitalized Patients from Correctional Facilities  
**14**

Currently Hospitalized Patients from Imperial County  
**7**

---

Hospitalized COVID-Confirmed Patients, 3-Day Avg.  
**368.7**

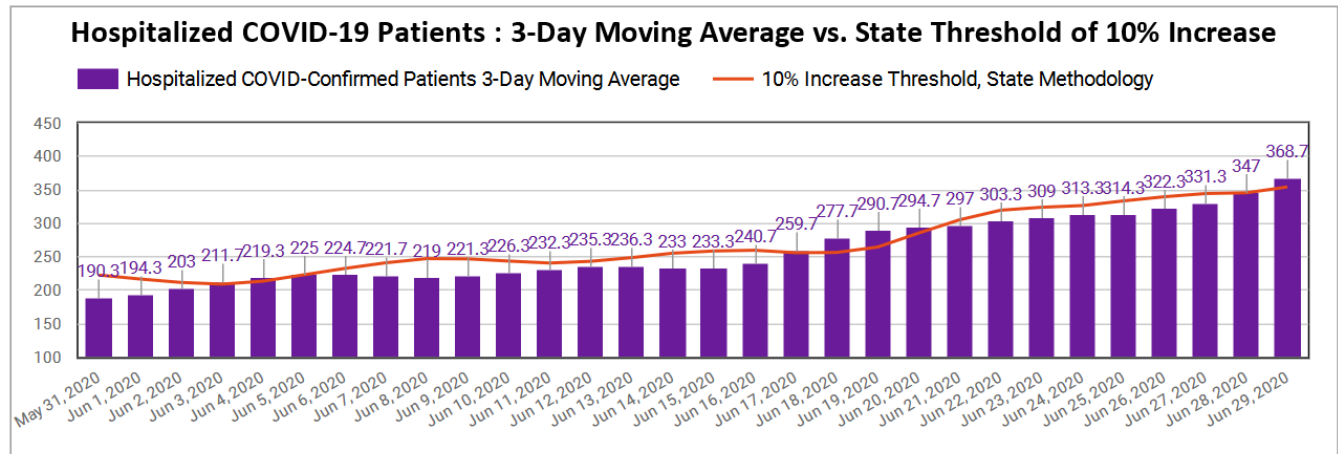
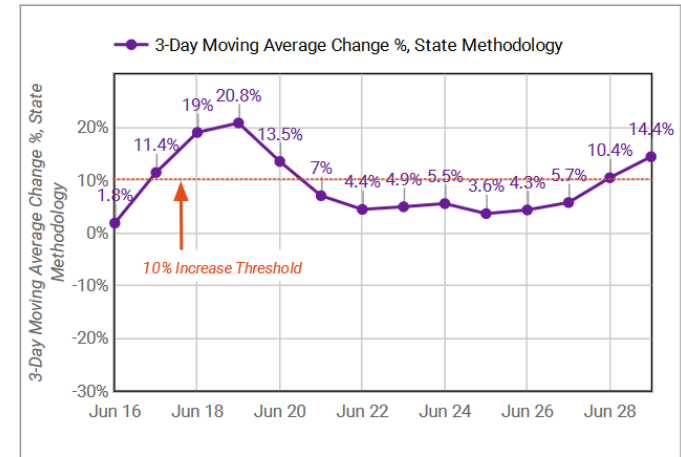
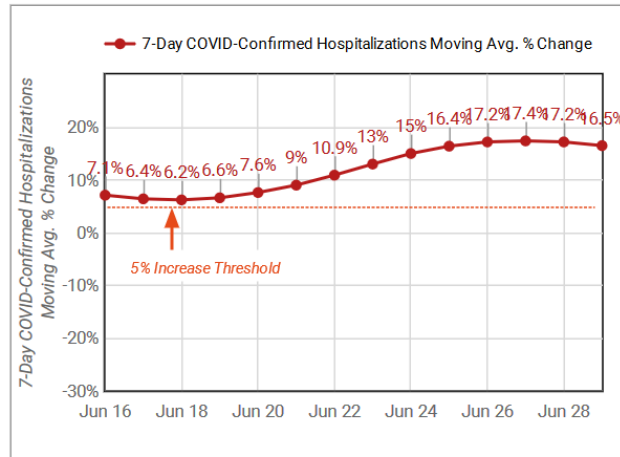
---

3-Day Mov. Avg. Change, State Methodology  
**14.4%**

---

Daily Change in 3-Day Moving Average  
**6.3%**

3-Day Moving Average State Methodology: Last 3 days' average compared to the prior 3 days' average, compared against new 3-Day average. The change, measured in percent, represents the difference in the current 3-day moving average vs. the prior 3-day moving average.





This page was created by the Emergency Operations Center (EOC) - EMS Team, to visualize COVID-19 trends in Riverside County. Please visit the Department of Public Health's Coronavirus page for updated local information on the Coronavirus response in Riverside County: <https://www.rivcoph.org/coronavirus>

# Weather

## COVID-19 Weather Support

**Issued:**

**1100 AM July 01, 2020**


### IMPACT SCALE

None   Minor   Moderate   High   Extreme

### Resources

- <https://www.weather.gov/spot/>
- <https://inws.ncep.noaa.gov>
- <https://www.wrh.noaa.gov/sgx/event/dsstable.php>

(858) 675 - 8705  
(24/7, Restricted)



Weather.gov/SanDiego

## 7-day Forecast for Counties in far Southwest CA

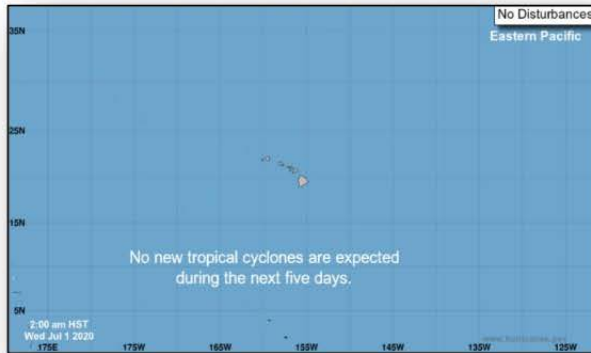
Period July 1- July 8 (24-hr)	Orange	SW San Bernardino	All Deserts	Western Riverside	San Diego
Today	None	None	None	None	None
Thursday	None	None	None	None	None
Friday	None	None	None	None	None
Saturday (4th of July)	None	None	None	None	None
Sunday	None	Warm	Hot	Warm	None
Monday	None	Warm	Hot	Warm	None
Tuesday	None	None	Warm	None	None
Wednesday	None	None	None	None	None

### Forecast Discussion

Night and morning low clouds west of the mountains expected into this weekend. Seasonal temperatures are on tap for today with gradual warming Thursday through early next week. Sunday is expected to be the warmest day of the week, where the lower deserts will see high temperatures at or slightly above 110 and highs close to 100 for the Inland Empire and Mojave Desert. Minor cooling will occur Monday through Wednesday.

Latest hazard threat table: <https://www.wrh.noaa.gov/sgx/event/dsstable.php>

# Tropical Outlook – Five Day



**Central Pacific**



**Eastern Pacific**



**Atlantic**

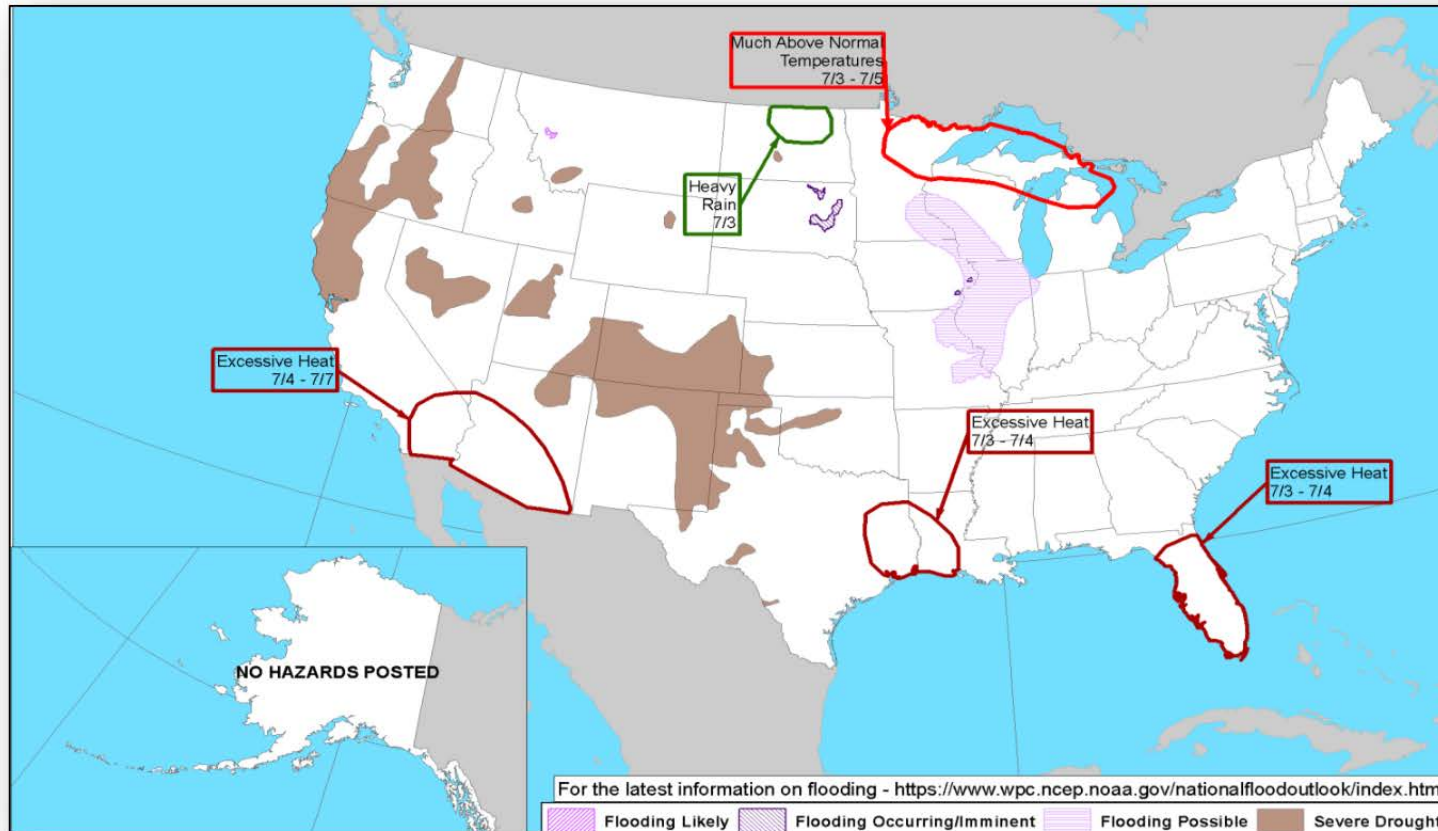
## Disturbance 1 (as of 2:00 a.m. ET)

- A few hundred miles S of the southern coast of Mexico
- Gradual development possible over the weekend as it moves WNW at 10 mph
- Formation chance through 48 hours: Low (near 0%)
- Formation chance through 5 days: Low (20%)

# Hazards Outlook – Jul 3-7



FEMA





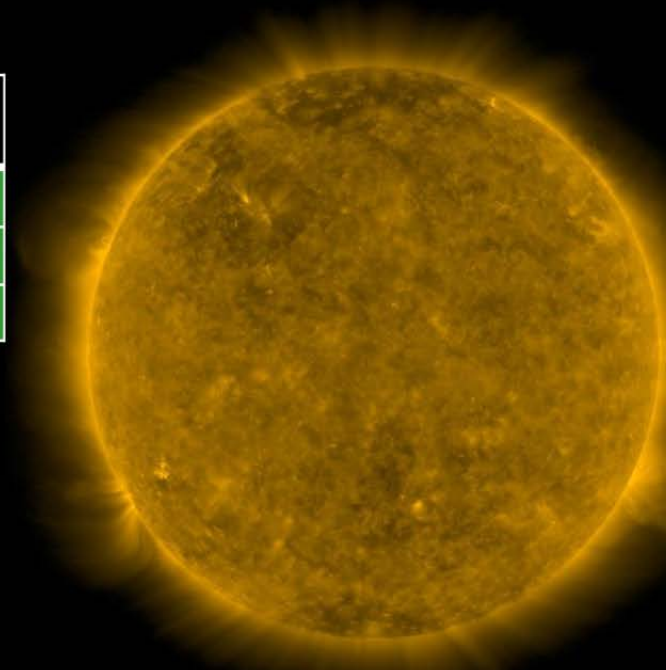


# Space Weather Summary/Outlook



FEMA

Space Weather Type	Past 48 Hours	Forecast: Jul 1	Forecast: Jul 2
Solar Flare (Radio Blackout)   <b>R Scale</b>	None	1%	1%
Solar Radiation Storms   <b>S Scale</b>	None	1%	1%
Geomagnetic Storms   <b>G Scale</b>	None	None	None



SDO/AIA 171 2020-06-30 20:16:58 UT

- Quiet across the R, S, and G scales
- No significant features observed or predicted on the Sun
- Severe or extreme activity very unlikely at this time