



**\*\*Extraordinary Assumptions:** There are a lot of different data sources in this report not all of them match but aid to provide an overall picture of the current situation. **COVID-19 Data Source Comparison** - [https://covid-19.splunkforgood.com/covid\\_19\\_datasource\\_comparison](https://covid-19.splunkforgood.com/covid_19_datasource_comparison)

# Daily Situation Summary

## Monday, June 29, 2020

### As of 10:00 AM

## COVID-19 by the Numbers

06/29/2020

	Riverside	Imperial	Kern	Los Angeles	Orange	San Bernardino	San Diego	San Luis Obispo	Sana Barbra	Ventura	California	United States	Global
Total Cases	16,209	5,513	4,455	95,341	12,951	11,491	12,836	505	2,831	2,527	211,243	2,504,175	10,021,401
New Cases	351	113	89	2,013	292	380	434	7	47	83	4,810		
Cases Per Capita	680	3,059	504	944	409	538	389	179	638	298	540	759	131
Total Deaths	438	81	70	3,285	323	249	360	1	28	44	5,905	125,484	499,913
New Deaths	0	8	0	18	0	0	2	0	0	0	33		
Deaths Per Capita	18.38	44.95	7.93	32.53	10.21	11.66	10.90	0.36	6.31	5.19	15.08	38.04	6.53
% of State's Cases	7.67%	2.61%	2.11%	45.13%	6.13%	5.44%	6.08%	0.24%	1.34%	1.20%	8.44%	24.99%	
Currently in Hospitals	11	3	65	432	0	2,259	595	61	427	79	5,868		
Total Hospital Beds	470	110	717	4,821	45	22,994	6,928	835	5,855	237	77,799		
Currently in ICU	2	0	21	130	0	439	170	10	151	17	1,380		
ICU Beds Available	38	0	70	124	0	1,211	401	13	319	8	3,597		
Case Fatality Rate	2.7%	1.5%	1.6%	3.4%	2.5%	2.2%	2.8%	0.2%	1.0%	1.7%	2.8%	5.0%	5.0%
Population*	2,383,286	180,216	883,053	10,098,052	3,164,182	2,135,413	3,302,833	281,455	443,738	848,112	39,148,760	329,842,223	7,658,295,400
% of Population	6.09%	0.46%	2.26%	25.79%	8.08%	5.45%	8.44%	0.72%	1.13%	2.17%	0.06%	0.0327%	

Sources: CDPH, WHO, CDC

The date for which case statistics and hospital data were reported. Hospital COVID data are self-reported through a portal managed by the California Hospital Association and pulled at 2pm. COVID case statistics are reported by local health departments to CalREDIE and are pulled at 2pm. Hospital data and case statistics are integrated by the California Department of Technology and made available through the Open Data Portal the following morning.

\*California-Demographics.com is made by Cubit – a demographic data provider & census.gov

### News

More detail on page 2

### US Data

More detail on page 6

### Riverside County

More detail on page 11

### Information

More detail on page 5

### State Data

More detail on page 10

### Weather

More detail on page 16

# News

## Mourning in the time of COVID-19

- Adrian Brown has been covering the COVID-19 pandemic in Hong Kong since it started. But the story really hit home when his father died in the United Kingdom and Adrian was faced with the question: What does it mean to grieve for someone during a pandemic?
- In the latest episode of Between Us, Adrian Brown shares his experience mourning his father's loss from a distance - a reality that so many others have faced in the time of this pandemic.

<https://www.aljazeera.com/news/2020/06/500000-dead-coronavirus-live-updates-20062823313992.html>

## US travelers likely to be left off list of nations allowed to enter EU, diplomats say

- European Union member states had been given till lunchtime tomorrow to sign off on a list of 15 non-EU states that would be allowed to travel into the bloc, two EU diplomats, who were not permitted to speak on the record about EU policy that is not yet formally agreed, have told CNN.
- The first phase was only expected to include countries whose current coronavirus data shows they are handling the pandemic at least as well as the EU. The US does not currently meet this criteria, and it's unclear when it might be considered for inclusion on any EU safe travel list.
- The EU is also working on guidelines for how member states would lift travel restrictions, as border control is not handled at an EU level.

[https://www.cnn.com/world/live-news/coronavirus-pandemic-06-29-20-intl/h\\_38d43468aa8b2925c615eb6d6623d082](https://www.cnn.com/world/live-news/coronavirus-pandemic-06-29-20-intl/h_38d43468aa8b2925c615eb6d6623d082)

## As expected, the US was not included in the list of nations allowed.

### CDC estimates 10 times as many U.S. coronavirus cases than have been reported

- U.S. officials estimate that 20 million Americans have been infected with the coronavirus since it first arrived in the United States, meaning that the vast majority of the population remains susceptible.
- Thursday's estimate is roughly 10 times as many infections as the 2.3 million cases that have been confirmed. Officials have long known that millions of people were infected without knowing it and that many cases are being missed because of gaps in testing.
- Twenty million infections means that about 6% of the nation's 331 million people have been infected.

<https://www.marketwatch.com/story/cdc-estimates-10-times-as-many-us-coronavirus-cases-than-have-been-reported-2020-06-25>

## Tracking coronavirus cases proves difficult amid new surge

- Health departments around the U.S. that are using contact tracers to contain coronavirus outbreaks are scrambling to bolster their ranks amid a surge of cases and resistance to cooperation from those infected or exposed.
- With too few trained contact tracers to handle soaring caseloads, one hard-hit Arizona county is relying on National Guard members to pitch in. In Louisiana, people who have tested positive typically wait more than two days to respond to health officials — giving the disease crucial time to spread. Many tracers are finding it hard to break through suspicion and apathy to convince people that compliance is crucial.

- “People are probably letting their guard down a little ... they think there is no longer a threat,” said Grand Traverse County, Michigan, Health Officer Wendy Hirschenberger, who was alerted by health officials in another part of the state that infected tourists had visited vineyards and bars in her area.
- Another new challenge: More young people are getting infected, and they’re less likely to feel sick or believe that they’re a danger to others.  
<https://apnews.com/fe2fd477ac117c7d81d458ac2bf08cbc>

### **House's remote voting into August due to coronavirus**

- The House of Representatives passed a rules change back in May to allow lawmakers to vote remotely. The change allowed the chamber to operate remotely for the first time in its more than 200-year history.  
[https://www.cnn.com/world/live-news/coronavirus-pandemic-06-29-20-intl/h\\_fff4ca8e4cc03ab3b0e4b51b12bab1cc](https://www.cnn.com/world/live-news/coronavirus-pandemic-06-29-20-intl/h_fff4ca8e4cc03ab3b0e4b51b12bab1cc)

### **Classroom contact could lead to transmission of Covid-19, CDC research suggests**

- Classroom interaction between a teacher and students could lead to Covid-19 transmission, according to a small study by US Centers for Disease Control and Prevention researchers published Monday in Emerging Infectious Diseases.
- The report details a case where a teacher infected with Covid-19 may have infected students after returning to the classroom while still experiencing symptoms. The teacher first had symptoms, including a headache, sore throat and fatigue, while traveling in Europe in late February. The teacher returned to school while still experiencing symptoms and taught 16 classes of 30 or less students. After the teacher’s Covid-19 test came back positive on March 1, all students were told to quarantine at home. Once the quarantine was over, 21 students from the teacher’s classes took part in the research. The students had a median age of 17.  
[https://www.cnn.com/world/live-news/coronavirus-pandemic-06-29-20-intl/h\\_026f08f848db61313514db8827f515be](https://www.cnn.com/world/live-news/coronavirus-pandemic-06-29-20-intl/h_026f08f848db61313514db8827f515be)

### **Florida Keys to close beaches for holiday weekend**

- The Florida Keys, will be closing beaches beginning at 5 p.m. on July 2, through the morning of Tuesday, July 7, according to Monroe County Public Information Officer Kristen Livengood.
- The city of Key West said in a statement that its beach closure is being done “to avoid large crowds gathering during this Covid-19 pandemic. The closure dovetails with that of Monroe County’s beaches to help send a clear message of safety.”
- In that statement, Key West city officials added that “masks are required inside establishments, though they can be removed – once you’re seated – to eat in a complying restaurant.
- Masks are also required outdoors when you are unable to remain six feet from others, such as walking down a crowded sidewalk. In addition, you are required to carry a mask when you leave your house, in case you find yourself in a situation in which social distancing is impossible  
[https://www.cnn.com/world/live-news/coronavirus-pandemic-06-29-20-intl/h\\_a36f7b41161a3ec75bdfbac370ebcd50](https://www.cnn.com/world/live-news/coronavirus-pandemic-06-29-20-intl/h_a36f7b41161a3ec75bdfbac370ebcd50)

### **"We did open too quickly," California county public health official says**

- The surge in Covid-19 cases in California continues and as state officials take measures to slow the spread of the virus, Ventura County’s public health officer Dr. Robert Levin said the state reopened too quickly.

- “I think we did open too quickly in terms of this being purely a virus question. Part of what drove us to open at all and at the rate we did was concerns about getting our economy moving. And of course, one can easily make an argument that having a robust economy is a public health issue as well.”
- The US is also witnessing more younger people contracting coronavirus during this surge in cases, and Levin stressed the importance of this information.
- “I don't think it's the openings themselves that are so damaging, except that they leave young people and people of other ages with the impression that it's okay. We can be free now. This thing is over,” he said, adding that perhaps the younger demographic more than others is ignoring the continued need for social distancing and quarantine.
- “It's important to continue to stay home and to not go out for frivolous reasons.”  
[https://www.cnn.com/world/live-news/coronavirus-pandemic-06-29-20-intl/h\\_35904163cd6cc741994148ba4380d9a5](https://www.cnn.com/world/live-news/coronavirus-pandemic-06-29-20-intl/h_35904163cd6cc741994148ba4380d9a5)

### **The CA Governor has recommended that bars close in Riverside County**

- We are working closely with the state to determine next steps regarding bars, including any potential impacts to restaurants that also have bars.
- Riverside County continues to see increased cases of coronavirus, and these cases have resulted in increased hospitalizations. All community members are urged to wear a face covering, keep six feet of distance from others and wash their hands frequently as these steps are known to slow and prevent the spread of the disease. All businesses that have reopened in Riverside County should follow the state and local reopening guidance  
<https://www.facebook.com/1564669787134049/posts/2629599793974371/?d=n>

### **One Good Thing**

- Stories about the kindness of strangers and individuals who sacrifice for others during the coronavirus outbreak.  
<https://apnews.com/OneGoodThing>

### **Fireworks In Lake Elsinore July 4th 2020 & Other Events Nearby**

- The city did not cancel its Fourth of July event as many towns did.
- Plus there are other fireworks shows and ways to celebrate in the region  
[https://patch.com/california/lakeelsinore-wildomar/fireworks-lake-elsinore-july-4th-2020-other-events-nearby?utm\\_term=article-slot-2&utm\\_source=newsletter-daily&utm\\_medium=email&utm\\_campaign=newsletter](https://patch.com/california/lakeelsinore-wildomar/fireworks-lake-elsinore-july-4th-2020-other-events-nearby?utm_term=article-slot-2&utm_source=newsletter-daily&utm_medium=email&utm_campaign=newsletter)

## Information

### TIP # 82

- Cloth face coverings are not a substitute for social distancing measures.  
<https://www.osha.gov/SLTC/covid-19/covid-19-faq.html#collapse9>



<https://www.fda.gov/food/food-safety-during-emergencies/use-respirators-facemasks-and-cloth-face-coverings-food-and-agriculture-sector-during-coronavirus>

### Deciding to Go Out

- What you need to know
  - In general, the more closely you interact with others and the longer that interaction, the higher the risk of COVID-19 spread.
  - If you decide to engage in public activities, continue to protect yourself by practicing everyday preventive actions.
  - Keep these items on hand when venturing out: a cloth face covering, tissues, and a hand sanitizer with at least 60% alcohol, if possible.

<https://www.cdc.gov/coronavirus/2019-ncov/daily-life-coping/deciding-to-go-out.html>

### Timeline of WHO's response to COVID-19

<https://www.who.int/news-room/detail/29-06-2020-covidtimeline>

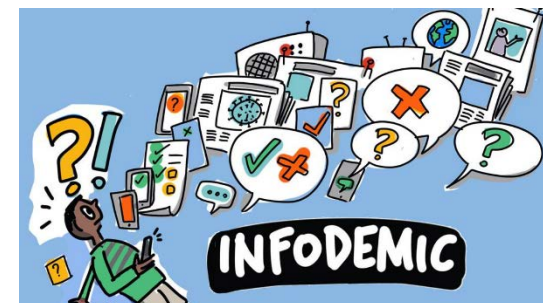
### How to protect yourself in the infodemic?

<https://www.who.int/news-room/events/detail/2020/06/30/default-calendar/1st-who-infodemiology-conference>  
<https://youtu.be/E5Egi0nuDEs>

 **U.S. FDA** @US\_FDA · 3h  
Wearing facemasks and cloth face coverings in public can help slow the spread of COVID-19. Looking for information on the proper use of these? Check out this infographic: [go.usa.gov/xwsuk](https://go.usa.gov/xwsuk)

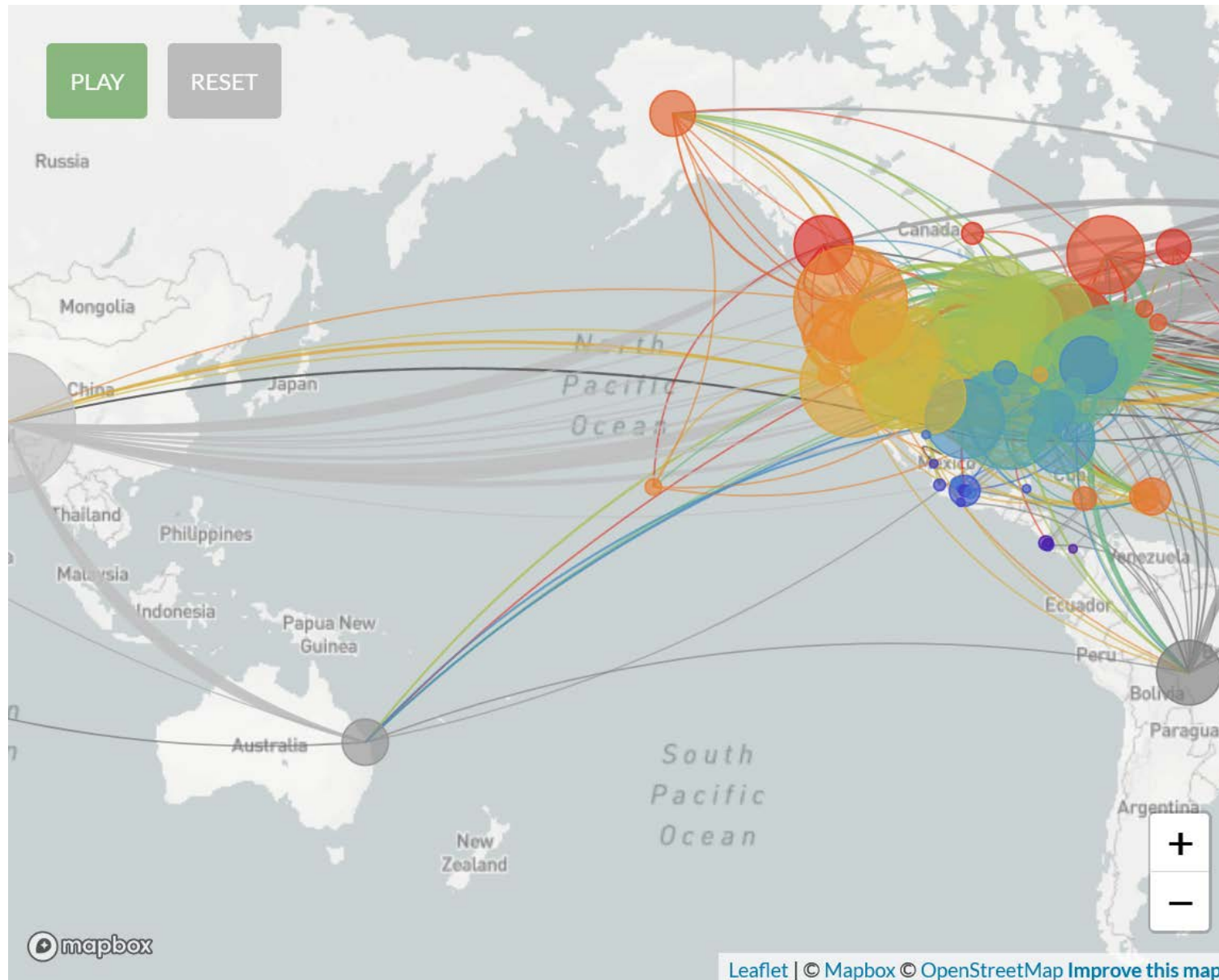


4 57 76



# U.S. Data

## Genomic epidemiology of novel coronavirus - North America-focused subsampling



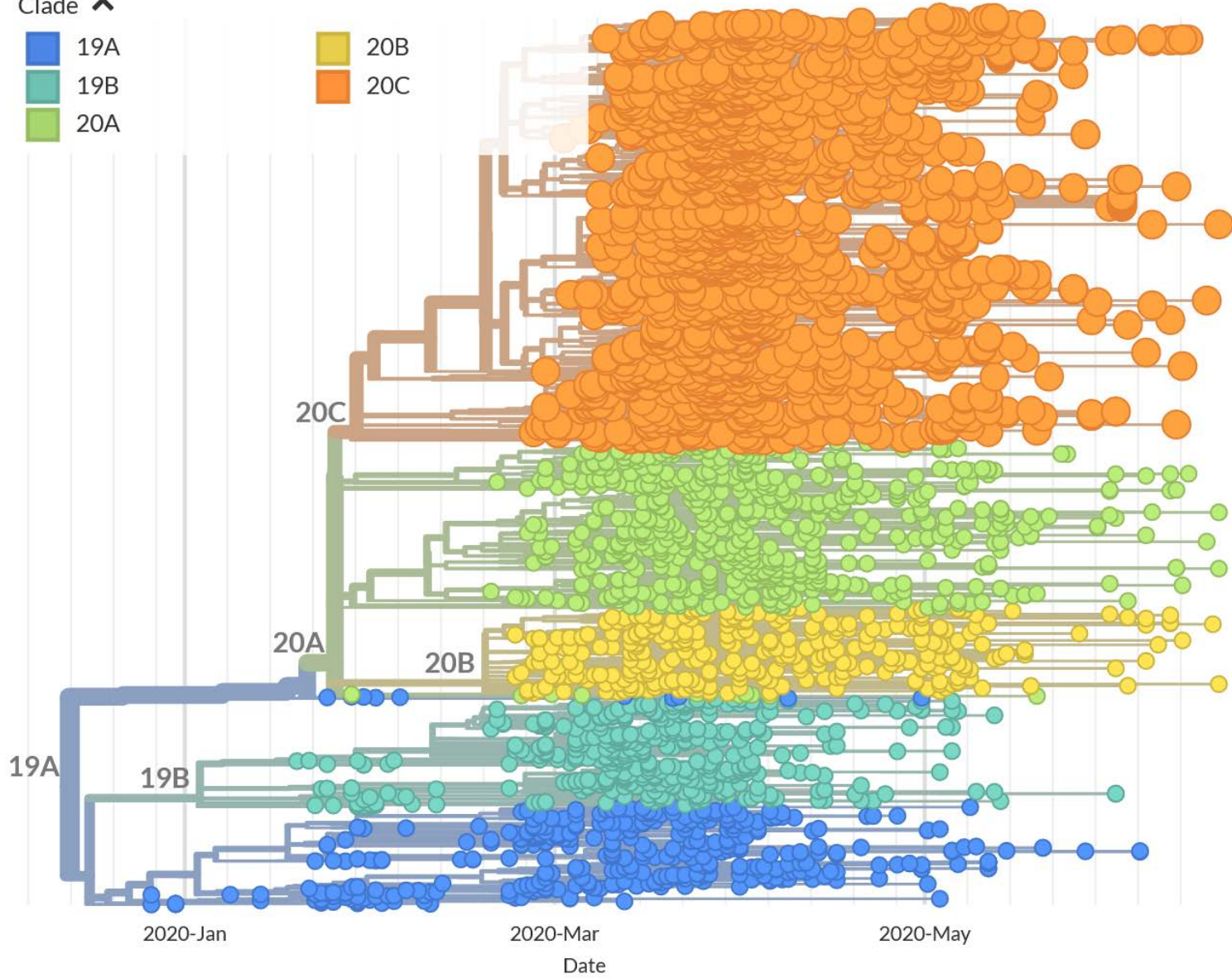
# Phylogeny

RESET LAYOUT

Clade ^

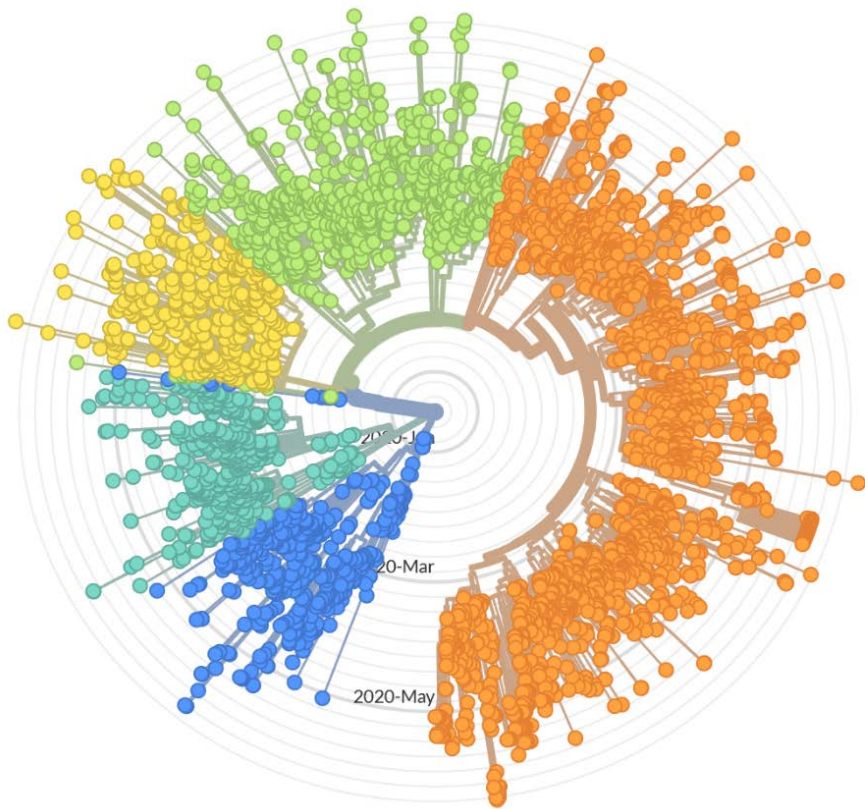
- 19A
- 19B
- 20A

- 20B
- 20C

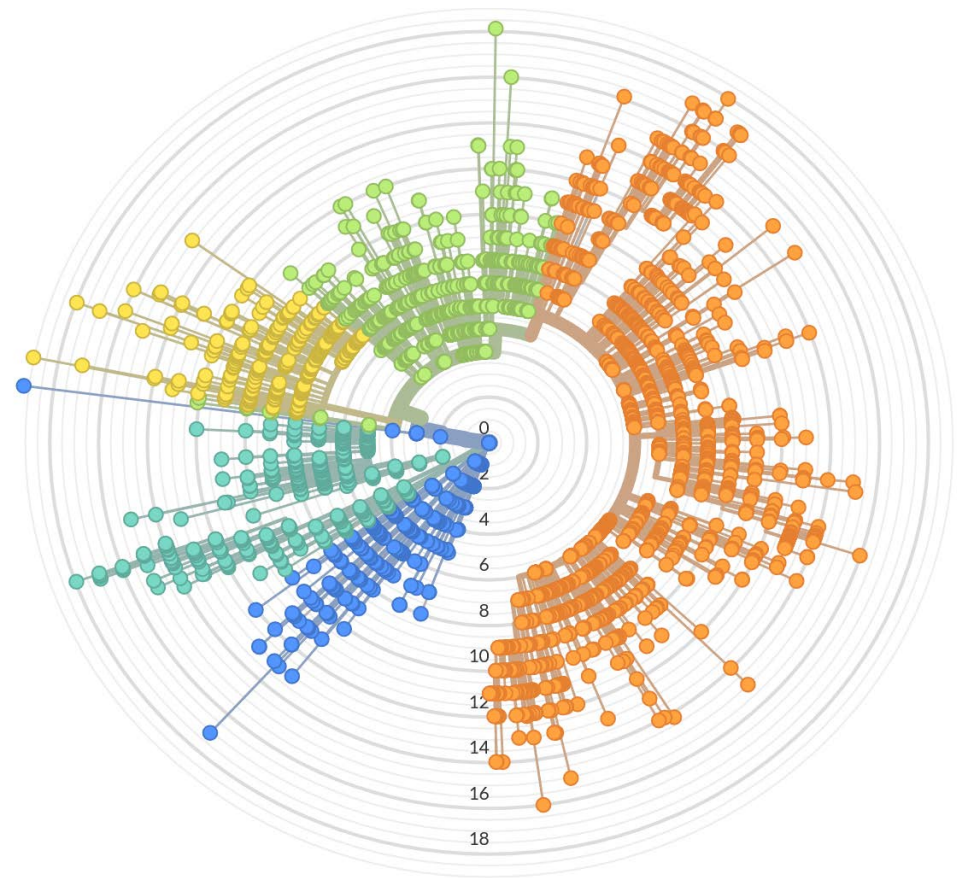


<https://nextstrain.org/ncov/global>  
<https://nextstrain.org/ncov/north-america>

**Radial Graph by time**



**Radial Graph by divergence**





# COVID-19 Update



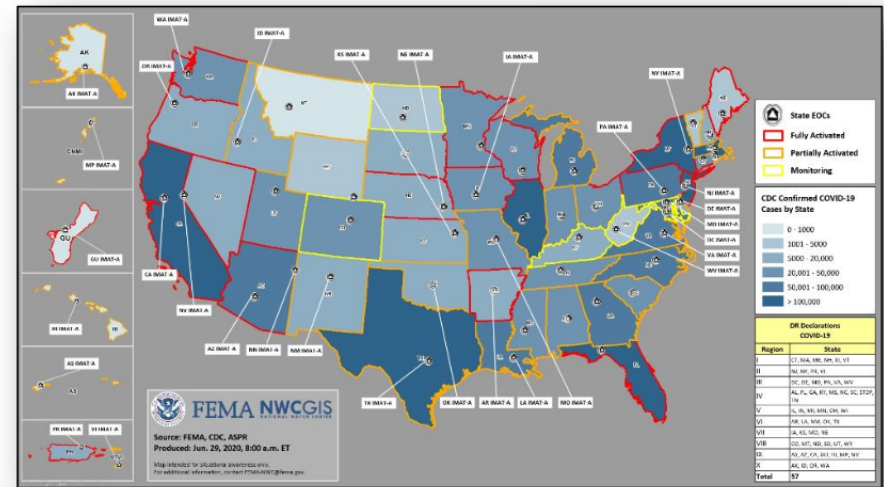
**Situation:** FEMA and HHS continue to lead the COVID-19 Response / Recovery efforts. 36,442 Federal employees deployed / activated; 2,518 FEMA employees deployed. Nationwide Testing: 30,110,061 cumulative (as of June 25).

Cases of COVID-19 continue to increase throughout the world

- Confirmed Cases of COVID-19
  - United States: 2,504,175 (+44,703)
  - Worldwide: 9,653,048 (+179,316)
- Deaths caused by COVID-19
  - United States: 125,484 (+508)
  - Worldwide: 491,128 (+6,866)

## Response:

- NRCC at Level I; Region I and II RRCCs at Level II; Region III, IV, V, VI and X RRCCs at Level III; Region VII, VIII and IX RRCCs are rostered; Regions VII, VIII, & IX COVID-19 response being worked from the Virtual JFO
- NWC, all RWCs, and MOCs at Steady State; monitoring



(FEMA SLB COVID-19, June 26)

# State Data

<https://covid19.ca.gov/>  
<https://update.covid19.ca.gov/#top>  
<https://www.cdph.ca.gov/Programs/CID/DCDC/Pages/Immunization/ncov2019.aspx#>

## Statewide industry guidance to reduce risk

<https://covid19.ca.gov/industry-guidance/#top>  
<https://www.cdph.ca.gov/Programs/CID/DCDC/Pages/Guidance.aspx>

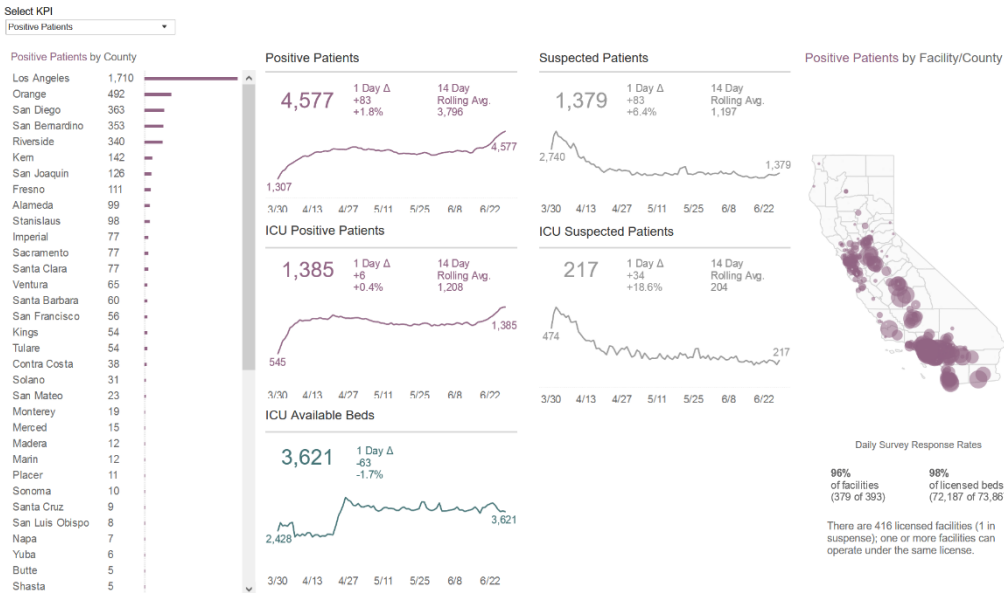
## Open sectors in counties with variance

<https://covid19.ca.gov/roadmap-counties/#track-data>

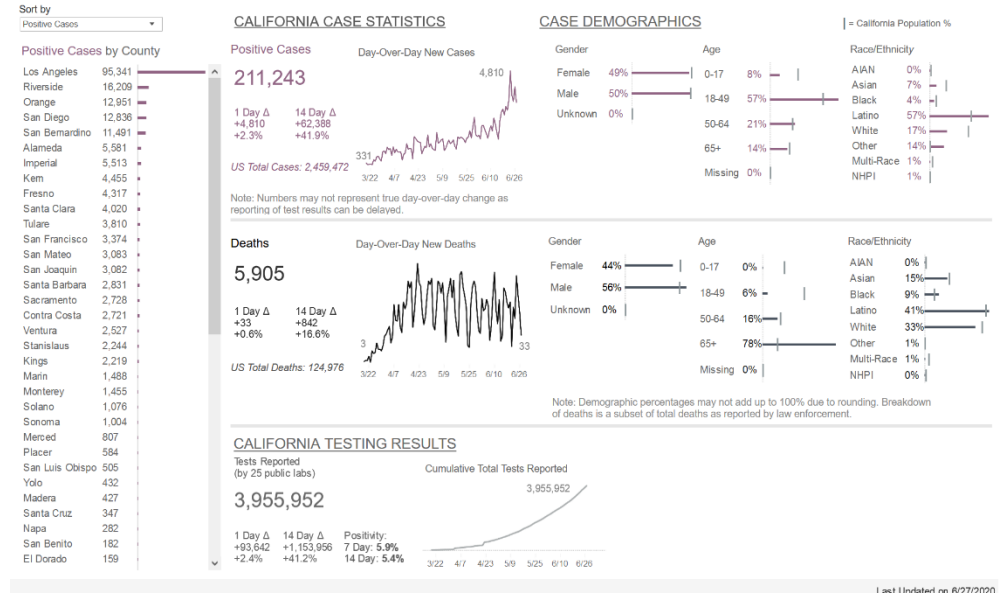
## Data models

<https://covid19.ca.gov/data-and-tools/>

### COVID-19: Hospitals



### COVID-19: Cases



The California COVID-19 Assessment Tool (CalCat) is a model to inform state and local response. You can find nowcasts, forecasts, and scenarios.

See the curve: <https://calcat.covid19.ca.gov>

## Current R-effective in California

The effective reproduction number (R-effective) is the average number of people each infected person will pass the virus onto and represents the rate at which COVID-19 is spreading.

Latest Estimate of R-effective is:

**1.05**

Spread of COVID-19 is likely stable

What does a R-eff of this size mean?

Low/High Estimates of R-effective:

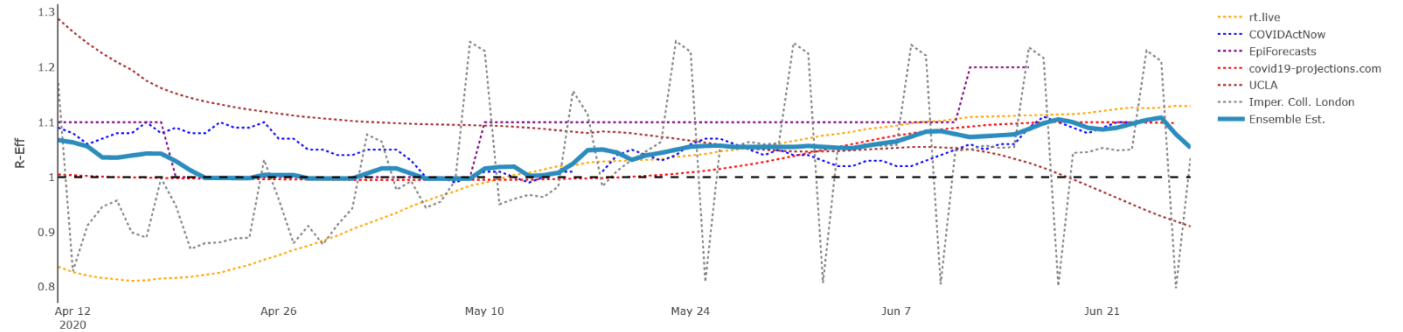
**0.91 - 1.13**

UCLA - rt.live

Download R-eff Values

## Statewide Estimates of R-effective

The effective reproductive number (R) is the average number of secondary infected persons resulting from a infected person. If  $R > 1$ , the number of infected persons will increase. If  $R < 1$ , the number of infected persons will decrease. At  $R = 1$ , the number of infected persons remains constant.



Alameda

Latest Estimate of R-effective is:

**1.02**

Spread of COVID-19 is likely stable

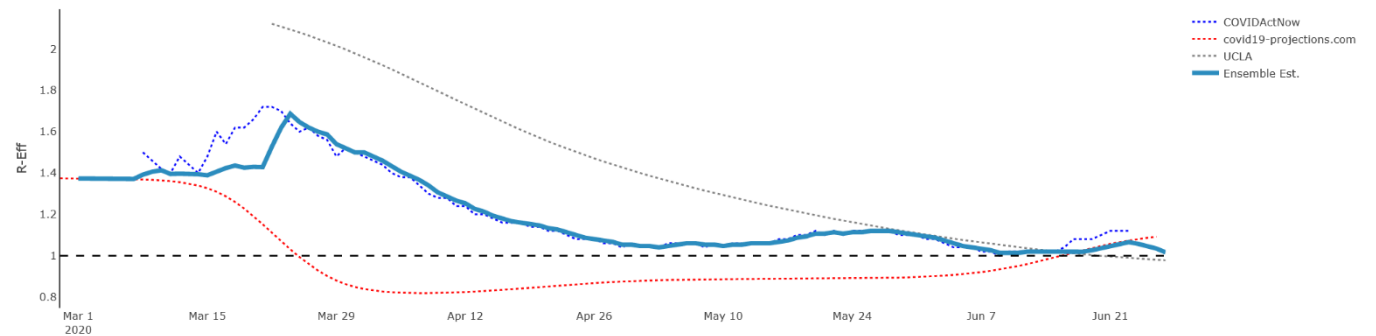
Download County R-eff Trend

NOTE: Some counties do not have sufficient case numbers in order for modelers to estimate R-effective.

## R-effective Trends by County

Select a county to see how R-effective has changed over time

Alameda



Sort by

Rooms Secured

Rooms Secured

Los Angeles	4320
San Francisco	2412
San Diego	1606
Santa Clara	674
Orange	666
Alameda	652
Contra Costa	566
Sacramento	525
Ventura	388
Riverside	369
Fresno	305
Solano	209
Yolo	207
Marin	200
Mendocino	167
Sonoma	167
San Mateo	163
San Luis Obispo	155
Santa Cruz	149
Stanislaus	134
Santa Barbara	128
Butte	127
Imperial	126
Tulare	113
Merced	112
Monterey	112
San Benito	97
San Joaquin	76
Napa	75
Humboldt	74
Placer	73
Nevada	70
San Bernardino	50

ROOM ACQUISITION

Rooms Secured

15,684 <sup>-35</sup>  
<sub>-0.2%</sub>

Percent of Goal

105%



ROOM OCCUPANCY

Rooms Occupied

10,946 <sup>+174</sup>  
<sub>+1.6%</sub>

Percent Occupied

70%



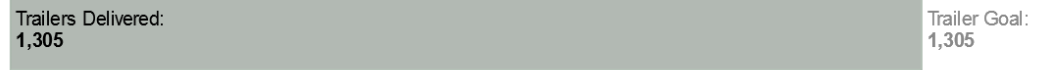
TRAILER DISTRIBUTION

Trailers Delivered

1,305 <sup>+0</sup>  
<sub>+0.0%</sub>

Percent of Goal

100%



Last Updated on 6/26/2020

**RUHS Public Health:**

[Board Offices and Executive Office temporarily close, next Board meeting will be virtual - June 26, 2020](#)

[Recreational team sports, including youth sports, still not permitted in Riverside County - June 26, 2020](#)

[More businesses eligible for small business grants - June 25, 2020](#)

**EMD** Emergency Management Department - COVID-19 Metrics Last Updated: 2020-06-28 13:30:00



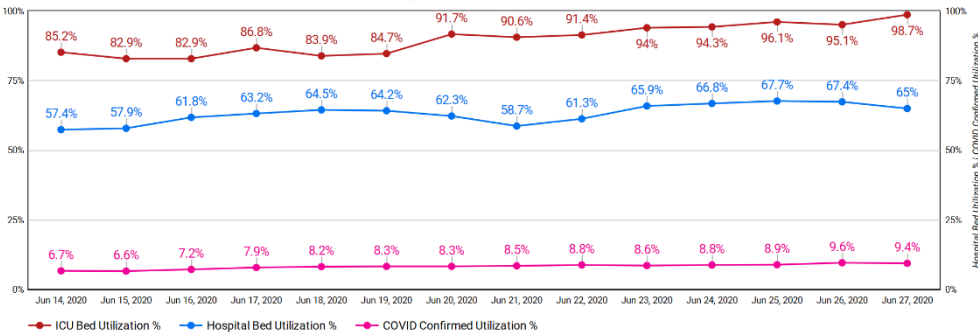
This collection of metrics is intended to help illustrate the impact of COVID-19 on the hospitals in Riverside County. The Emergency Management Department (EMD), in partnership with the Public Health Department, collects and tracks multiple metrics to assist in the County's response to COVID-19.

For the most up-to-date Riverside County Coronavirus information, please visit the Riverside County Public Health Department's website: <https://www.rivcoph.org/coronavirus>

Reporting of data runs 24 hours behind for many facilities, therefore the metrics below will normally be current with yesterday's data.



**Licensed Hospital Bed/ICU Bed Utilization Trends**

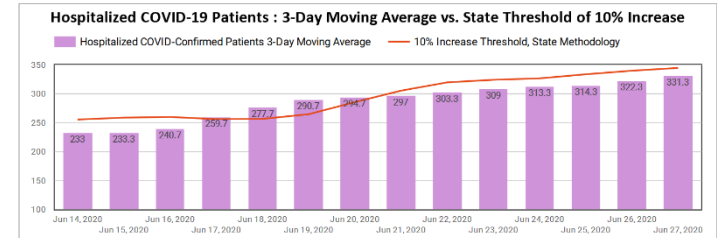
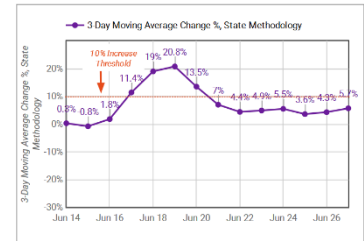
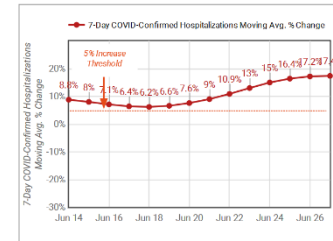
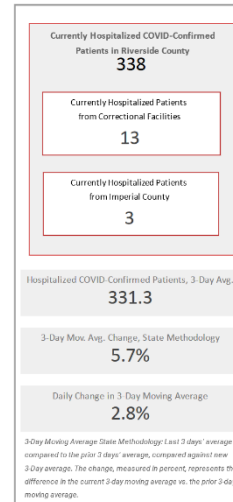


This page was created by the Riverside County Emergency Operations Center (EOC) EMS Team, to visualize hospital bed utilization rates compared with ICU bed utilization for the past two weeks. Hospitalized COVID-Confirmed Patient volume is received with a day's lag time.

**EMD** COVID-19 Hospitalized Patients - Rolling Metrics Last Updated: 2020-06-28 13:30:00



This page displays COVID-Confirmed hospitalized patient trends in Riverside County hospitals, with a focus on changes in 3-day and 7-day moving averages as outlined by the State of California's re-opening criteria for counties.



This page was created by the Emergency Operations Center (EOC) EMS Team, to visualize COVID-19 trends in Riverside County. Please visit the Department of Public Health's Coronavirus page for updated local information on the Coronavirus response in Riverside County: <https://www.rivcoph.org/coronavirus>

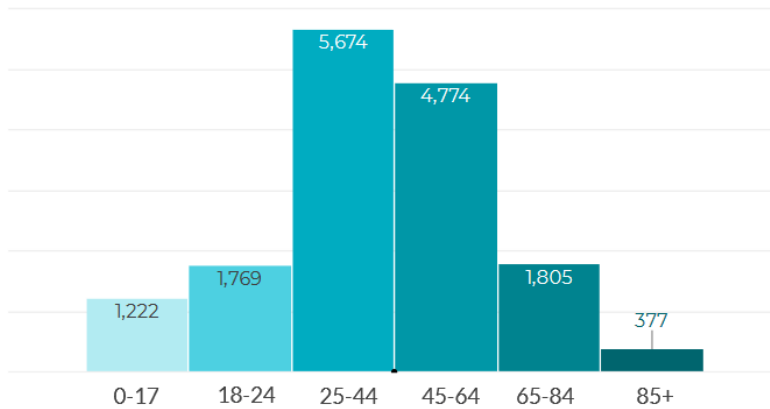


# RIVERSIDE COUNTY COVID-19 CASES

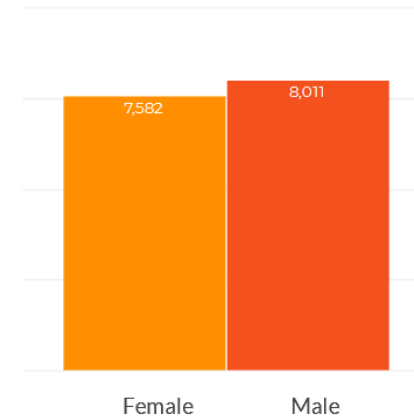
## DATA SUMMARY

Jun 26, 2020

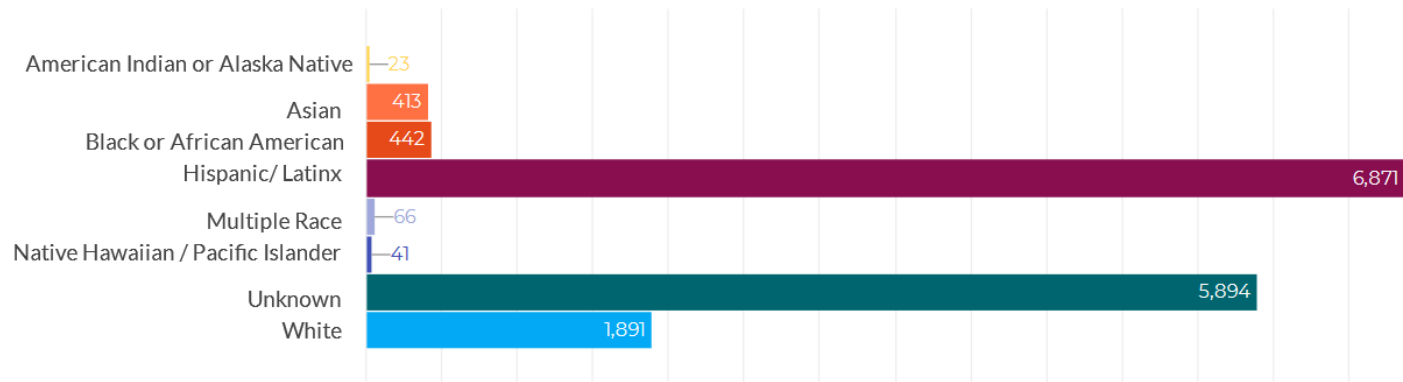
COVID-19 Cases by Age Group



COVID-19 Cases by Sex



COVID-19 Cases by Race/Ethnicity

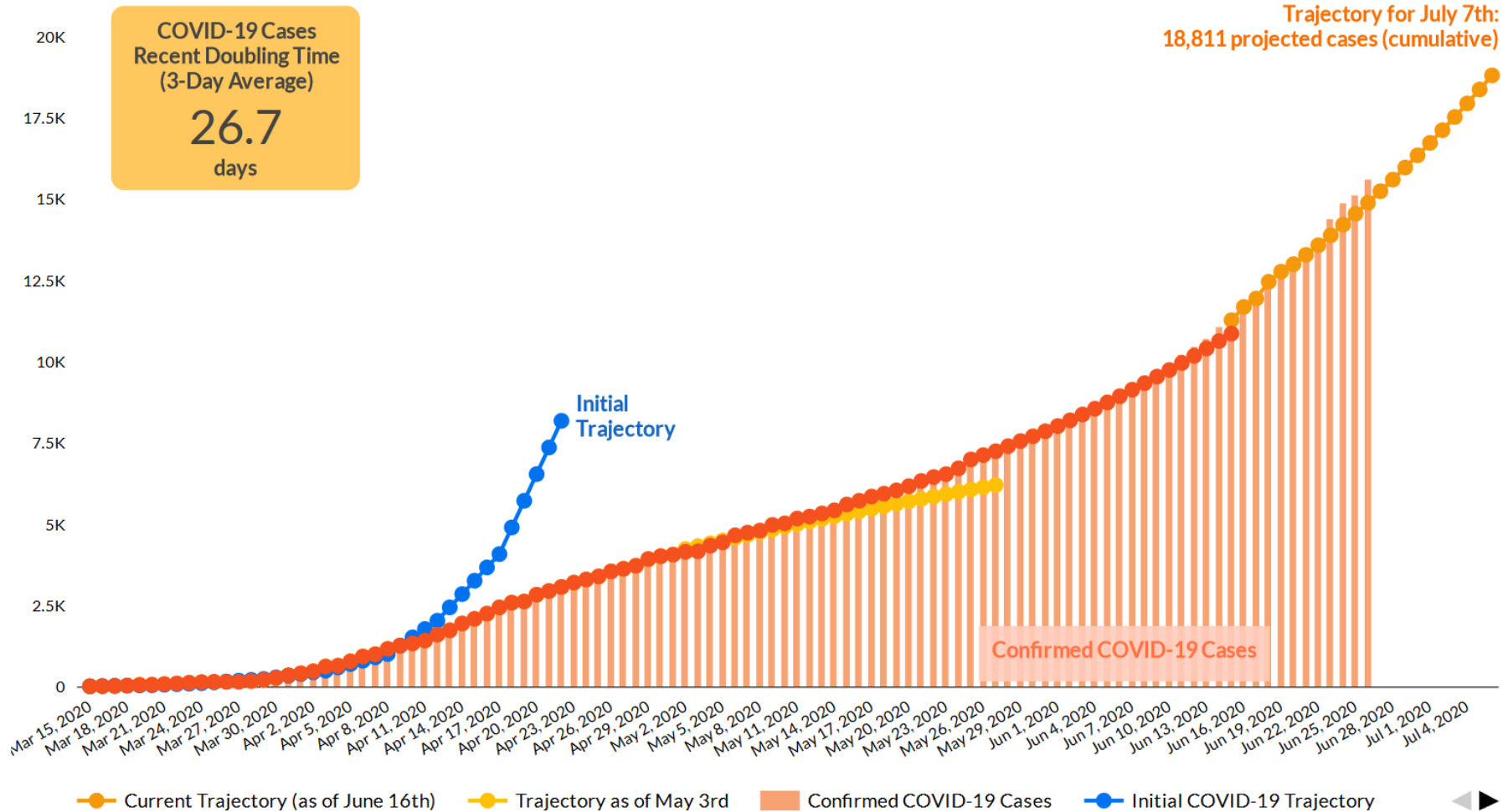


Date	American Indian or Alaska Native % Cases	Asian % Cases	Black or African American % Cases	Latinx % Cases	Multiple Race % Cases	Native Hawaiian/ Pacific Islander % Cases	Unknown % Cases	White % Cases
Jun 26, 2020	0.1	2.6	2.8	43.9	0.4	0.3	37.7	12.1



# RIVERSIDE COUNTY COVID-19 TRAJECTORY

Jun 26, 2020 - Jun 26, 2020



**MAJOR EVENTS:**

- March 13th: Public Health Officer orders school closure
- March 19th: California Governor orders stay at home
- April 4th: Public Health Officer orders stay at home and cover the face
- April 18th: Asymptomatic testing begins
- May 1st: Riverside County reverts to State orders
- May 8th: Riverside County begins Phase 2
- May 22nd: Riverside County accelerates to Phase 2.5
- May 25: Memorial Day
- June 1: Protest Downtown Riverside

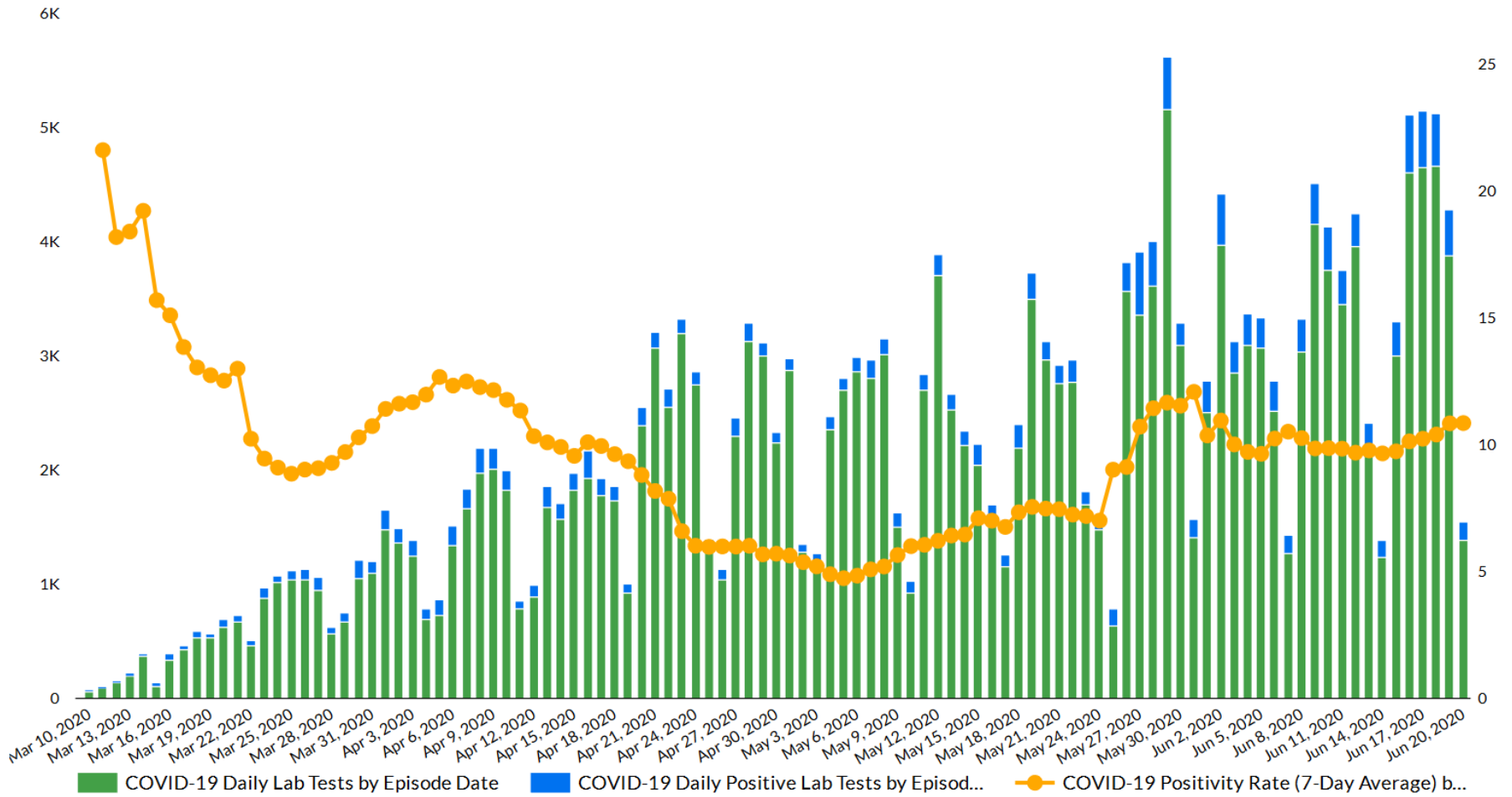


# RIVERSIDE COUNTY COVID-19 CASES

**POSITIVE\***  
**17,610**

**TESTS RESULTED\***  
**209,556**

Date	Recent Positivity Rate
Jun 20, 2020	10.9
Jun 19, 2020	10.8
Jun 18, 2020	10.4



\*Based on case report date (Episode Date)

\*Numbers are based on case report date (Episode Date) and may slightly differ from confirmed case counts




# Weather


## COVID-19 Weather Support

**Issued:**

**1030 AM June 28, 2020**



**NATIONAL WEATHER  
SERVICE  
SAN DIEGO, CA**



**IMPACT SCALE**

●  
None

●  
Minor

●  
Moderate


●  
High

●  
Extreme

**Resources**

- <https://www.weather.gov/spot/>
- <https://inws.ncep.noaa.gov>
- <https://www.wrh.noaa.gov/sqx/event/dsstable.php>

(858) 675 - 8705  
(24/7, Restricted)



**Weather.gov/SanDiego**

## 7-day Forecast for Counties in far Southwest CA

Period June 28 - July 5 (24-hr)	Orange	SW San Bernardino	All Deserts	Western Riverside	San Diego
Today	None	Mtn Wind	Windy	Mtn Wind	Mtn Wind
Monday	AM Shower	AM Shower	Breezy	AM Shower Mtn Wind	AM Shower Mtn Wind
Tuesday	None	None	None	None	None
Wednesday	None	None	None	None	None
Thursday	None	None	None	None	None
Friday	None	None	None	None	None
Saturday	None	None	None	None	None
Sunday	None	None	Warm	None	None

**Forecast Discussion**

Cool conditions across all areas and gusty west to southwest winds in the mountains and deserts will prevail through Monday. Windiest period will be this evening/tonight. Sustained winds of 20-35 mph with gusts of 40-50 MPH (isolated 60 MPH) possible. Tonight into Monday morning, there is a chance of light rain on the coastal mountain slopes and west of the mountains. Cool weather will continue through Thursday, with temperatures warming to slightly above average by Sunday.

Latest hazard threat table: <https://www.wrh.noaa.gov/sqx/event/dsstable.php>

# Tropical Outlook – Atlantic

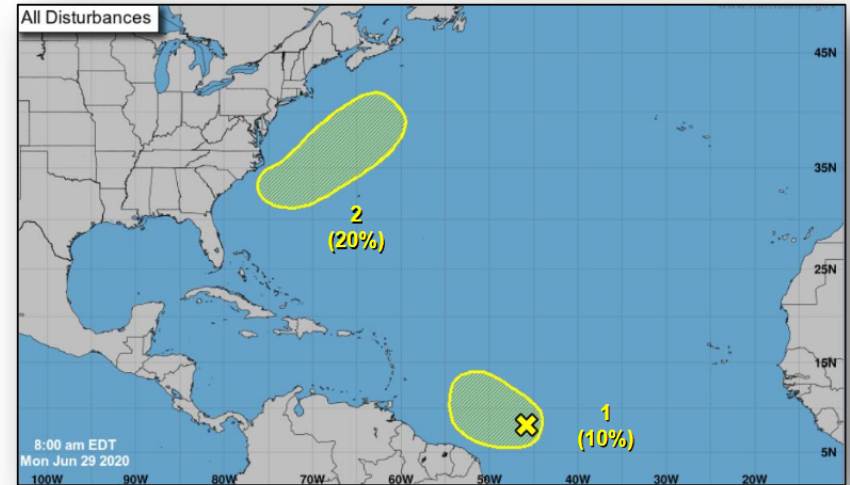


## **Disturbance 1** (as of 8:00 a.m. ET)

- Several hundred miles east of the southern Winward Islands
- Moving WNW at 20 mph
- Some slight development possible during the next day or so while it moves W to WNW at 20 mph
- Strong upper level winds forecast to inhibit further development by mid-week
- Formation chance through 48 hours: Low (10%)
- Formation chance through 5 days: Low (10%)

## **Disturbance 2** (as of 8:00 a.m. ET)

- Forecast to form off the southeastern coast of the U.S. on Tuesday
- Some development could occur later this week as it moves NE well offshore of the east coast of the U.S.
- Forecast to reach cooler waters Wednesday night or Thursday and development after that time is not expected
- Formation chance through 48 hours: Low (near 0%)
- Formation chance through 5 days: Low (20%)



# Tropical Outlook – Eastern Pacific

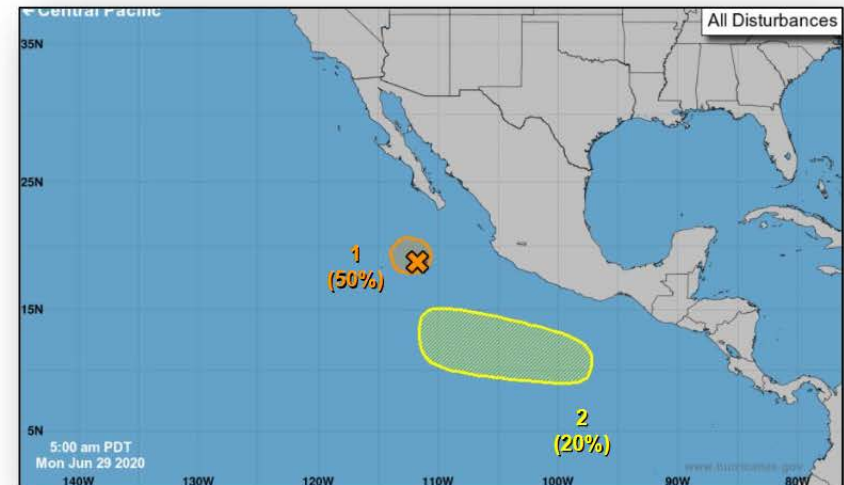


## **Disturbance 1** (as of 8:00 a.m. ET)

- A few hundred miles SSW of the southern tip of the Baja California peninsula
- Moving NW toward colder waters, but it could still briefly become a tropical depression today or tonight
- Formation chance through 48 hours: Medium (50%)
- Formation chance through 5 days: Medium (50%)

## **Disturbance 2** (as of 8:00 a.m. ET)

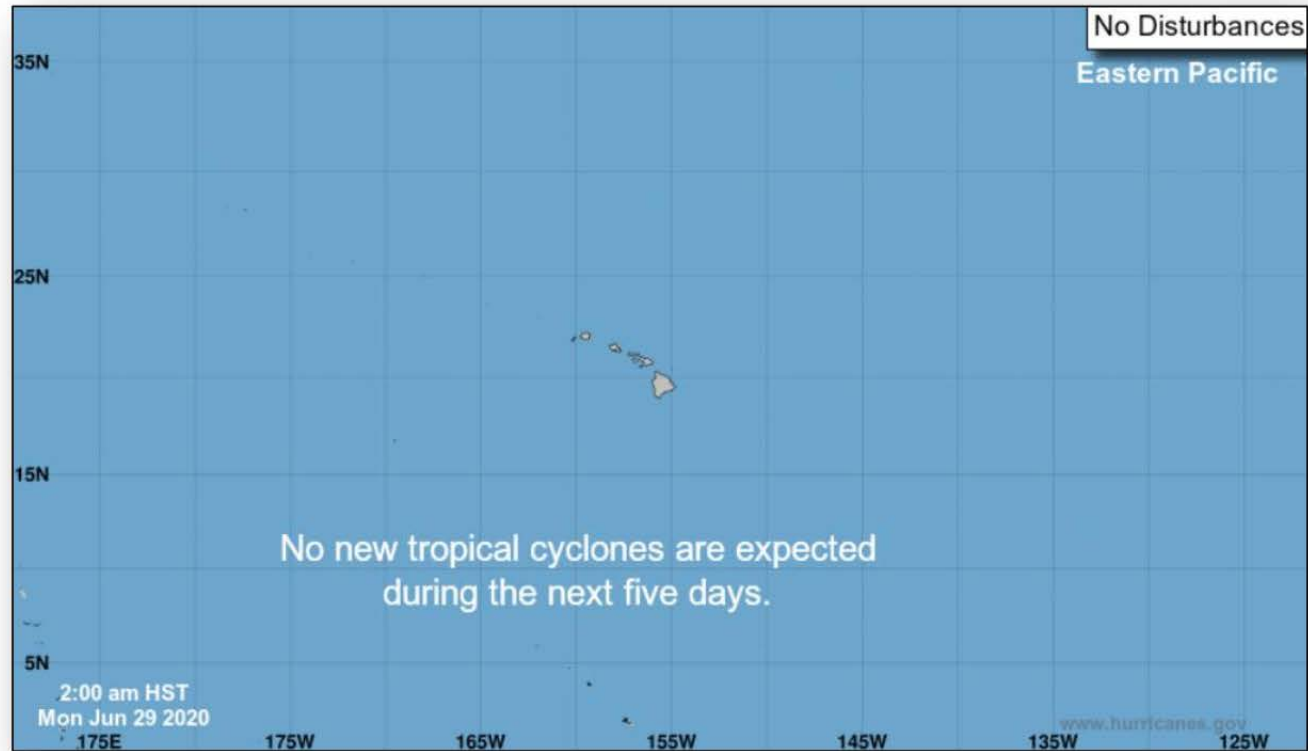
- A few hundred miles SW of the Gulf of Tehuantepec later this week
- Gradual development possible by the weekend while it moves WNW at 10-15 mph well south of Mexico
- Formation chance through 48 hours: Low (near 0%)
- Formation chance through 5 days: Low (20%)



# Tropical Outlook – Central Pacific



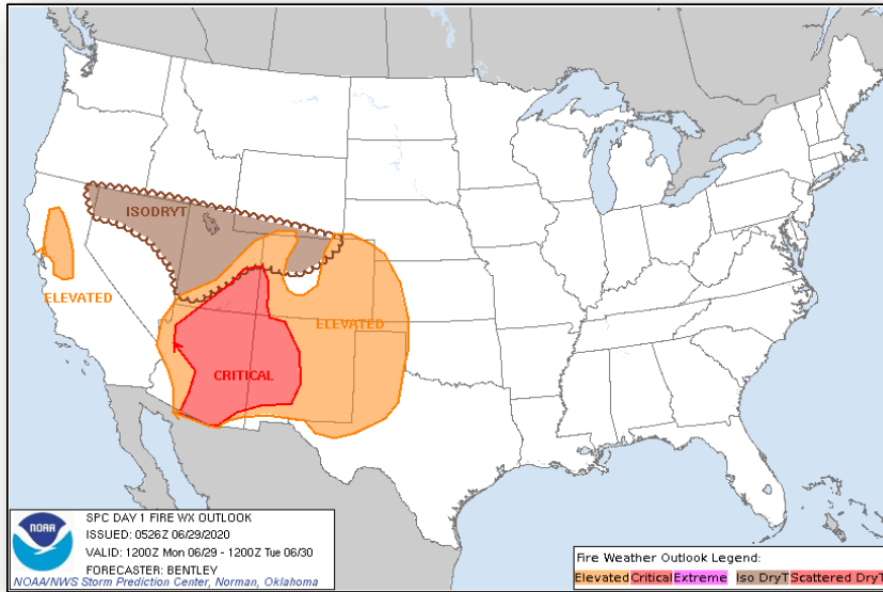
FEMA



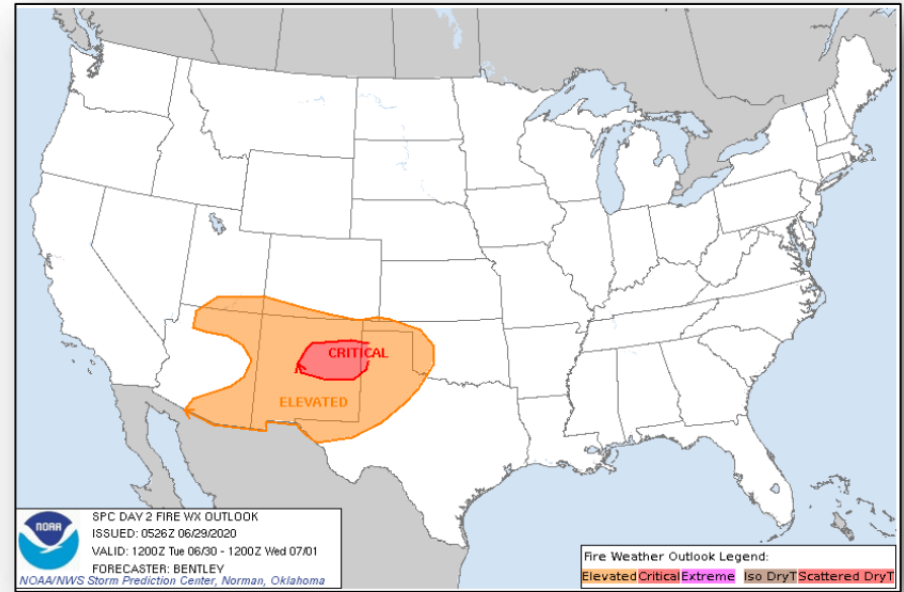
# Fire Weather Outlook



FEMA



**Today**



**Tomorrow**