



Daily Situation Summary

Monday, June 8, 2020

As of 10:00 AM

COVID-19 by the Numbers

6/8/2020

	Riverside	Imperial	Kern	Los Angeles	Orange	San Bernardino	San Diego	San Luis Obispo	Sana Barbra	Ventura	California	United States	Global
Total Cases	8,473	2,631	2,530	59,596	7,192	5,726	7,942	288	1,750	1,236	122,901	1,920,904	6,912,751
Cases Per Capita	356	1,460	287	590	227	268	240	102	394	146	314	583	90
Total Deaths	345	30	45	2,531	165	210	312	1	14	35	4,485	109,901	400,469
Deaths Per Capita	14.48	16.65	5.10	25.06	5.21	9.83	9.45	0.36	3.16	4.13	11.46	33.33	5.23
% of State's Cases	6.89%	2.14%	2.06%	48.49%	5.85%	4.66%	6.46%	0.23%	1.42%	1.01%	6.40%	27.79%	
Currently in Hospitals	226	74	62	1,462	300	168	297	2	28	27	3,142		
Currently in ICU	73	18	34	453	123	66	135	2	9	7	1,083		
Case Fatality Rate	4.1%	1.1%	1.8%	4.2%	2.3%	3.7%	3.9%	0.3%	0.8%	2.8%	3.6%	5.7%	5.8%
Population*	2,383,286	180,216	883,053	10,098,052	3,164,182	2,135,413	3,302,833	281,455	443,738	848,112	39,148,760	329,756,537	7,654,686,300
% of Population	6.09%	0.46%	2.26%	25.79%	8.08%	5.45%	8.44%	0.72%	1.13%	2.17%	0.04%	0.0251%	

Sources: CDPH, WHO, CDC

The date for which case statistics and hospital data were reported. Hospital COVID data are self-reported through a portal managed by the California Hospital Association and pulled at 2pm. COVID case statistics are reported by local health departments to CalREDIE and are pulled at 2pm. Hospital data and case statistics are integrated by the California Department of Technology and made available through the Open Data Portal the following morning.

*California-Demographics.com is made by Cubit – a demographic data provider & census.gov

News

More detail on page 2

US Data

More detail on page 2

State Data

More detail on page 5

Riverside County Data

More detail on page 6

Weather

More detail on page 7

****Extraordinary Assumptions: There are a lot of different data sources in this report not all of them match but aid to provide an overall picture of the current situation. COVID-19 Data Source Comparison - https://covid-19.splunkforgood.com/covid_19_datasource_comparison**

News

News Update later today

One Good Thing

- Stories about the kindness of strangers and individuals who sacrifice for others during the coronavirus outbreak.
<https://apnews.com/OneGoodThing>

U.S. Data

Covid-19 Case Cluster (past 48 hours)

<https://www.cdc.gov/covid-data-tracker/index.html>

Social Impact COVID-19 Events

2 EVENTS
Past 48 hours

Map of news reports related to social impact events resulting from the COVID-19 outbreak in the United States, such as school closures, localized outbreaks, state of emergency declarations, etc.

DATE RANGE

Past 48 hours

TYPE OF EVENT ?

COVID-19 Case Clusters



COVID-19 Case Clusters

The article describes a cluster of COVID-19 cases that represent higher than expected COVID-19 incidence within a local region (ex: a factory with a higher than expected COVID-19 incidence among its employees).

US Test Data

<https://www.cdc.gov/covid-data-tracker/index.html>

United States Laboratory Testing

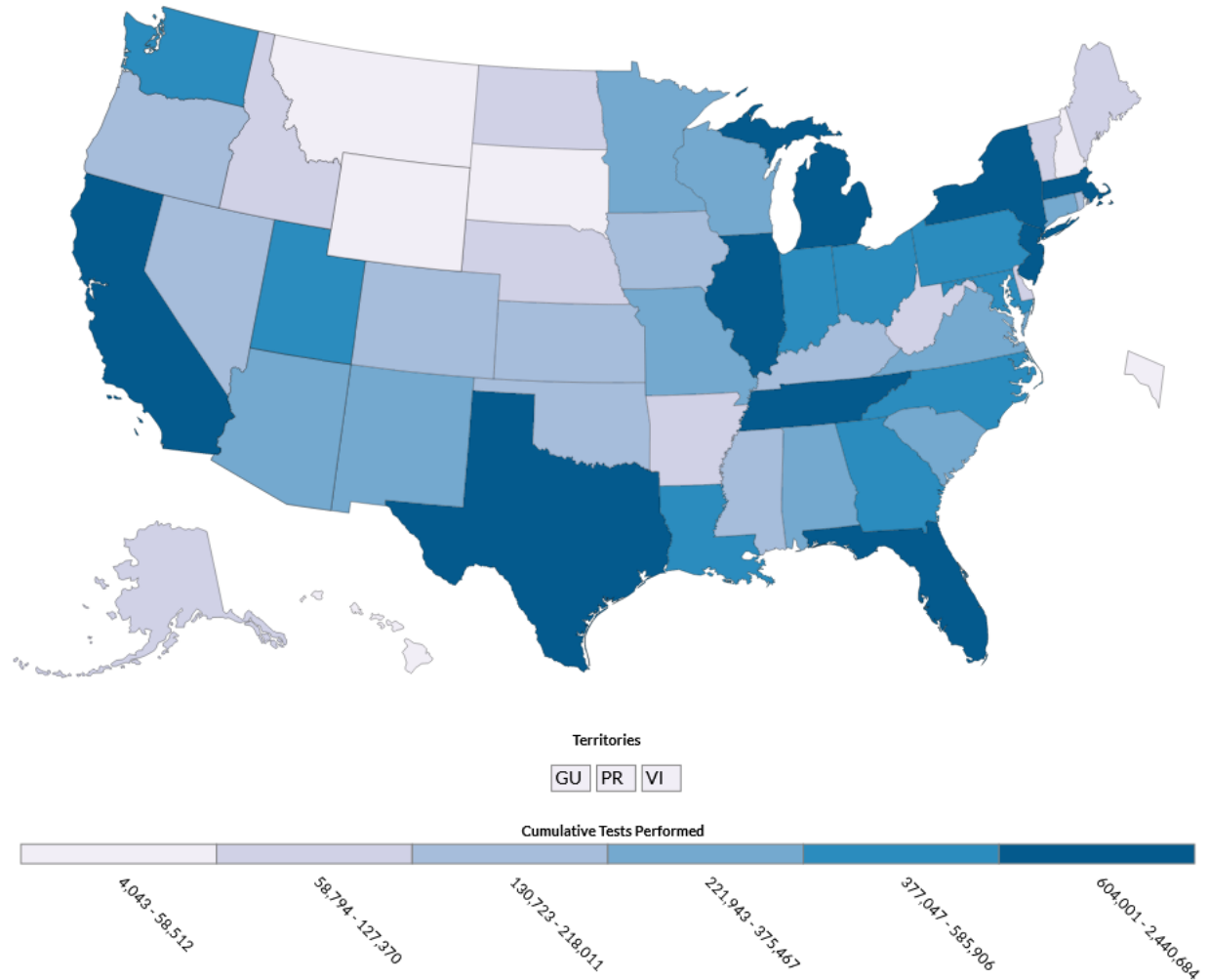
Commercial and Reference, Public Health, and Hospital Laboratories

USA
20,384,850
TESTS REPORTED
CDC | Updated: Jun 7 2020 5:45PM

USA
2,296,561
POSITIVE TESTS
CDC | Updated: Jun 7 2020 5:45PM

USA
11%
OVERALL %
POSITIVE
CDC | Updated: Jun 7 2020 5:45PM

Preliminary data: Reported by U.S. Laboratories including Commercial and Reference, Public Health, and Hospital
Totals may include antibody data from some states



COVID-19 Update



Situation: FEMA and HHS continue leading the multiagency COVID-19 Response / Recovery efforts. 39,668 FEMA, DoD, HHS, VA, and CDC personnel deployed / activated; 2,729 FEMA employees deployed. Nationwide testing: 20,384,850 cumulative as of June 6.

Lifelines Impacts:

Health and Medical – Public Health

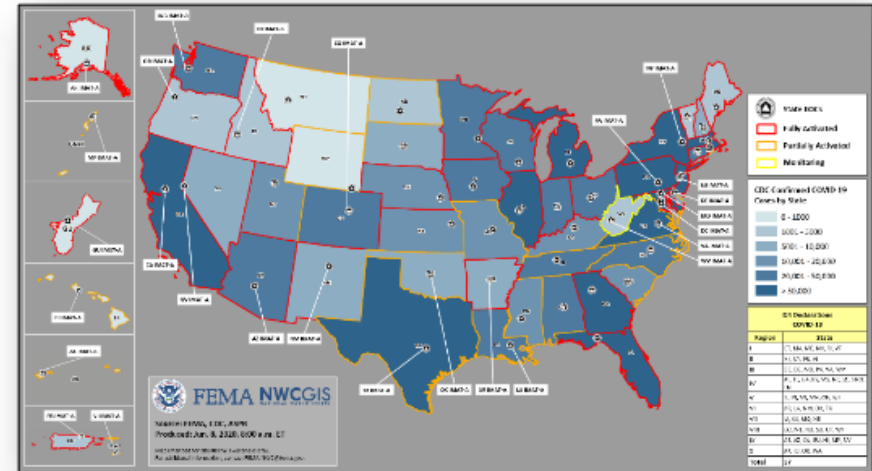
- To date, FEMA has shipped over 17.9 million swabs and 12.9 (+0.7) million media across all states territories, and other federal partners
- RI: Dept. of Health has partnered with the CDC to conduct serology testing for first responders and medical professions with the intention of starting within the next two weeks (FEMA Region I Updated, June 5, 5:24 p.m. ET)

Food, Water and Shelter

- Mashpee Wampanoag Tribe is operating three (3) non-congregate shelters; currently housing 34 homeless tribal members (29 adults and 5 minors)

Response:

- NRCC at Level I; Region IX RRCC at Level I; Region I, II, IV, VI (for TS Cristobal), and X RRCCs at Level II; Region III, V, and VIII RRCCs at Level III; Region VII RRCC is rostered but the Region continues to support COVID-19 response from the JFO in Kansas City, MO
- NWC and all RWCs and MOCs at Steady State, continue to monitor



COVID-19	Confirmed	Deaths
United States	1,920,904 (+29,214)	109,901 (+709)
Worldwide	6,663,304 (+127,950)	392,802 (+5,647)

(FEMA SLB COVID-19, June 7)

State Data

<https://update.covid19.ca.gov/#top>
<https://covid19.ca.gov/>

by Age Group in California

June 6, 2020

Age Group	No. Cases	Percent Cases	No. Deaths	Percent Deaths	Percent CA population
<5	1,765	1.4	0	0	5.8
5-17	6,182	4.8	0	0	16.7
18-34	36,051	28	49	1.1	24.3
35-49	32,361	25.1	220	4.9	19.3
50-59	21,049	16.3	400	8.9	12.5
60-64	8,507	6.6	309	6.9	5.9
65-69	6,187	4.8	419	9.3	5
70-74	4,637	3.6	471	10.5	4.1
75-79	3,593	2.8	550	12.2	2.7
80+	8,287	6.4	2,083	46.3	3.9
Missing	193	0.1	0	0	0
Total	128,812	100	4,501	100	100

California COVID-19 By The Numbers

June 7 2020

Numbers as of June 6, 2020



For county-level data:
data.chhs.ca.gov

CALIFORNIA COVID-19 SPREAD

128,812

Total Cases

Ages of Confirmed Cases

- 0-17: 7,947
- 18-49: 68,412
- 50-64: 29,556
- 65+: 22,704
- Unknown/Missing: 193

Gender of Confirmed Cases

- Female: 63,173
- Male: 65,024
- Unknown/Missing: 615

Hospitalizations

Confirmed COVID-19
3,138/1,068
 Hospitalized/in ICU

Suspected COVID-19
1,387/220
 Hospitalized/in ICU

4,626

 Fatalities

California Statistics

Total Population: 40,129,160

36,102

New Cases (Last 14 Days)

90.0 Per 100K
 128,812 Total Cases

852

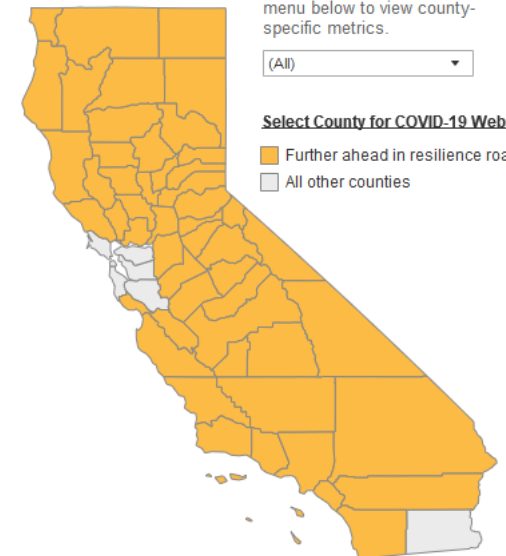
New Deaths (Last 14 Days)

2.1 Per 100K
 4,626 Total Deaths

779,473

Tests Reported (Last 14 Days)

4.6% Test Positivity
 1.4 Daily per 1,000 Residents
 2,362,218 Total Tests Reported



Click on map or Select from the menu below to view county-specific metrics.

(All)

Select County for COVID-19 Website

- Further ahead in resilience roadmap
- All other counties

Riverside County

<https://www.rivcoph.org/coronavirus>

Riverside County COVID-19 Cases (Updated Daily Mon-Fri)

Tested
131,138

Confirmed
8,777

Currently Hospitalized
221
Includes 71 in ICU

Deaths
355

Recovered
5,161

Confirmed Cases by City of Residence (Click on map for numbers)

Updated 6/5/2020



County of Riverside, Esri, HERE, Garmin, FAO, N...

Confirmed Cases in County Jails = 241; Recovered = 207; Confirmed Cases in State Prisons = 209.

Cities

Communities

Long Term Care

Reports


Data Notes

Weather


COVID-19 Weather Support

Issued:

1100 AM June 07, 2020



NATIONAL WEATHER SERVICE
SAN DIEGO, CA



IMPACT SCALE

●
None

●
Minor


●
Moderate

●
High

●
Extreme

Resources

- <https://www.weather.gov/spot/>
- <https://inws.ncep.noaa.gov>
- <https://www.wrh.noaa.gov/sqx/event/dsstable.php>

(858) 675 - 8705
(24/7, Restricted) 

Weather.gov/SanDiego

7-day Forecast for Counties in far Southwest CA

Period June 7 - June 14 (24-hr)	Orange	SW San Bernardino	All Deserts	Western Riverside	San Diego
Sunday	Mild, late Wind	Mild, late Wind	Mild and Windy	Mild, late Wind	Mild
Monday	Windy, Warming	Windy, Warming	Warming, Breezy	Windy, Warming	Warming, Breezy
Tuesday	Very Warm	Warm	Warming	Warm	Very Warm
Wednesday	Warm	Warm	Warm	Warm	Warm
Thursday	Warm	Warm	Very Warm	Warm	Warm
Friday	Cooler	Cooler	Breezy, Cooler	Cooler	Cooler
Saturday	Cooler	Cooler	Breezy, Cooler	Cooler	Cooler
Sunday	Cool	Cool	Breezy and Cool	Cool	Cool

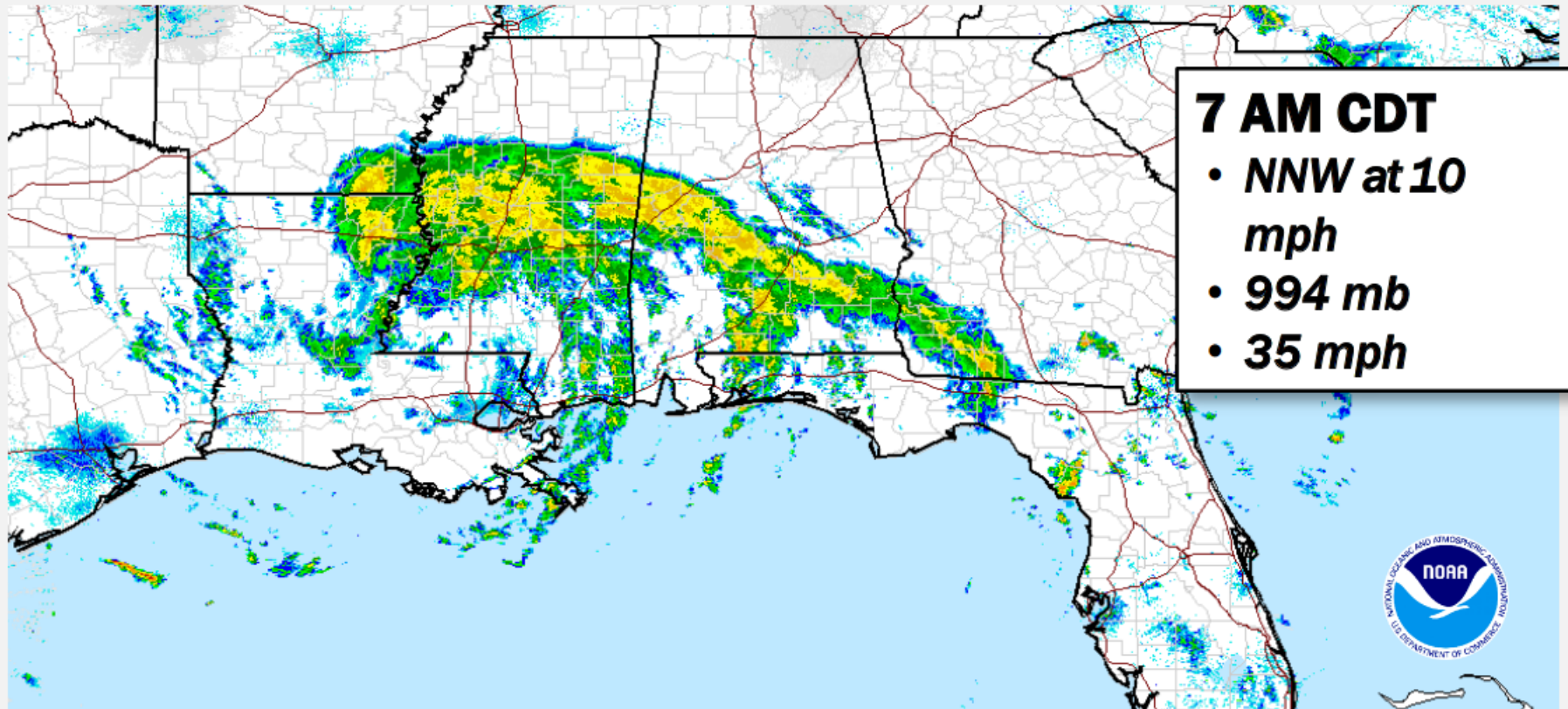
Forecast Discussion

A warmer period begins today. A Wind Advisory remains in effect for the High Desert through this evening. Strong offshore winds will develop tonight, continuing Monday, for most areas west of the mountains, except in San Diego County where the winds won't be as strong. Offshore winds will be lighter but still breezy Tuesday, with the warmest conditions at the coast (Heat Advisory likely to be issued for Tuesday). Continued warm weather through midweek, with the warmest day for the deserts on Thursday. Cooler conditions will return late in the week, as onshore flow rebuilds and marine layer clouds become more prominent as we head into the weekend.

Latest hazard threat table: <https://www.wrh.noaa.gov/sqx/event/dsstable.php>

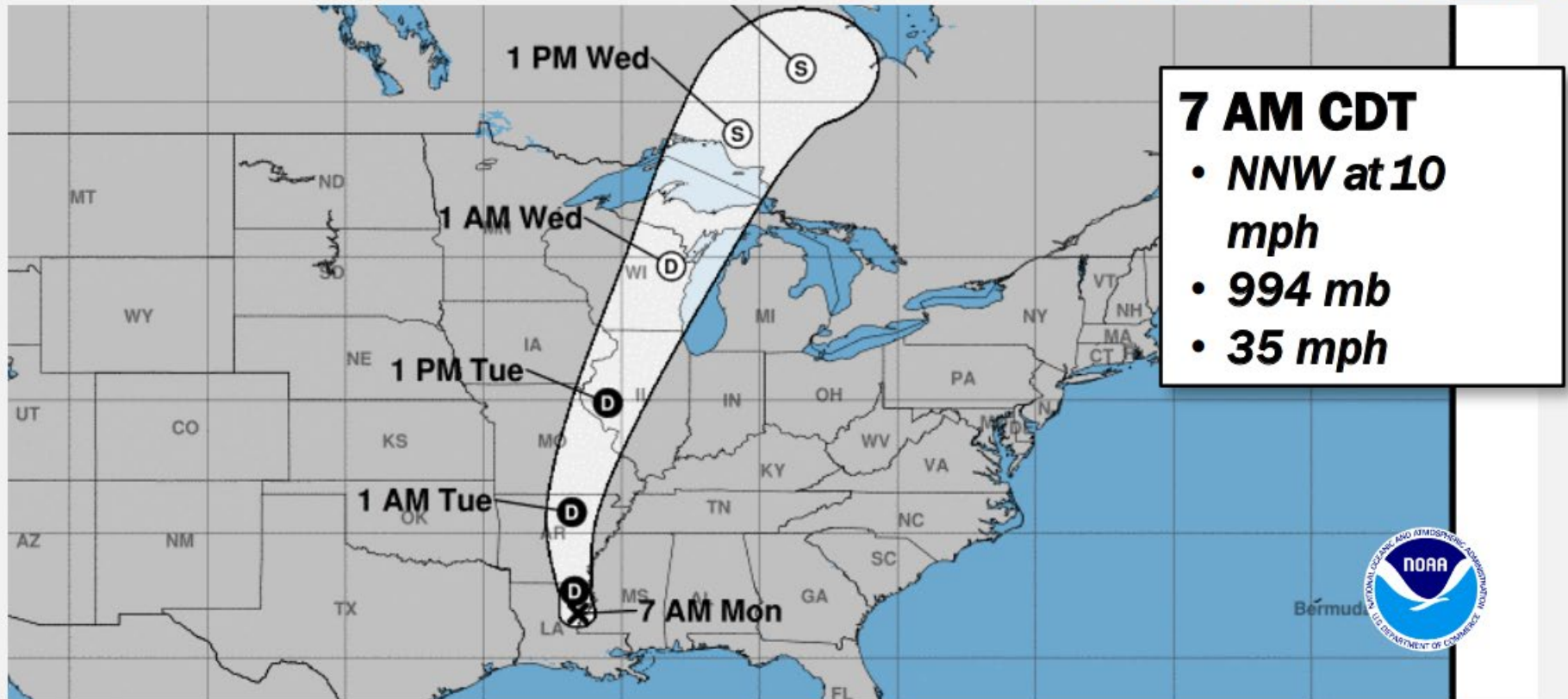
Tropical Depression Cristobal

RADAR LOOP



Tropical Depression Cristobal

FORECAST TRACK



East Pacific Overview

TROPICAL OUTLOOK



Central Pacific Overview

TROPICAL OUTLOOK



Tropical Depression Cristobal



Situation:

TD Cristobal made landfall at 6:00 p.m. ET along the coast of southeast LA; currently located 40 miles N of Baton Rouge, LA. The storm is moving NNW at 10 mph; max sustained winds 35 mph.. Gradual weakening will continue through Tuesday, however some strengthening is expected Tuesday night and Wednesday.

Lifeline Impacts:

Safety and Security

- LA: Mandatory evacuations for Jefferson, Terrebonne, and Lafourche parishes

Food, Water, and Shelter

- LA: 2 shelters open with 0 occupant; MS: 3 shelters with 0 occupants (*ARC midnight shelter count*)

Transportation

- Numerous Ports in LA are closed

State/Local Preparations:

- TX EOC at Partial Activation (COVID-19)
- LA EOC at Partial Activation (Cristobal and COVID-19); Governor declared SOE

FEMA/Federal Preparations:

- NRCC at Level I (COVID-19)
- Region IV: RRCC at Level II (COVID-19)
 - IMAT-1 deployed to MS EOC
- Region VI: RRCC at Level II (Cristobal and COVID-19)
 - IMAT-1 deployed to TX EOC; IMAT-2 deployed to LA EOC
 - Two LNOs deployed to New Orleans
 - LA: Emergency Declaration approved on June 7
 - MERS assets deployed to LA EOC and Shreveport, LA
- ISB established in Roseland, LA; SMT deployed
- IOF established at LA GOHSEP
- USACE managing Mississippi river flow

