



Daily Situation Summary

Friday, June 5, 2020

As of 10:00 AM

COVID-19 by the Numbers

06/05/2020

	Riverside	Imperial	Kern	Los Angeles	Orange	San Bernardino	San Diego	San Luis Obispo	Santa Barbara	Ventura	California	United States	Global
Total Cases	8,473	2,631	2,530	59,596	7,192	5,726	7,942	288	1,750	1,236	122,901	1,842,101	6,515,796
Cases Per Capita	356	1,460	287	590	227	268	240	102	394	146	314	559	85
Total Deaths	345	30	45	2,531	165	210	312	1	14	35	4,485	107,029	387,298
Deaths Per Capita	14.48	16.65	5.10	25.06	5.21	9.83	9.45	0.36	3.16	4.13	11.46	32.46	5.06
% of State's Cases	6.89%	2.14%	2.06%	48.49%	5.85%	4.66%	6.46%	0.23%	1.42%	1.01%	6.67%	28.27%	
Currently in Hospitals	226	74	62	1,462	300	168	297	2	28	27	3,142		
Currently in ICU	73	18	34	453	123	66	135	2	9	7	1,083		
Case Fatality Rate	4.1%	1.1%	1.8%	4.2%	2.3%	3.7%	3.9%	0.3%	0.8%	2.8%	3.6%	5.8%	5.9%
Population*	2,383,286	180,216	883,053	10,098,052	3,164,182	2,135,413	3,302,833	281,455	443,738	848,112	39,148,760	329,741,416	7,654,060,600
% of Population	6.09%	0.46%	2.26%	25.79%	8.08%	5.45%	8.44%	0.72%	1.13%	2.17%	0.04%	0.0241%	

Sources: CDPH, WHO, CDC

The date for which case statistics and hospital data were reported. Hospital COVID data are self-reported through a portal managed by the California Hospital Association and pulled at 2pm. COVID case statistics are reported by local health departments to CalREDIE and are pulled at 2pm. Hospital data and case statistics are integrated by the California Department of Technology and made available through the Open Data Portal the following morning.

*California-Demographics.com is made by Cubit – a demographic data provider & census.gov

News

More detail on page 3

State Data

More detail on page 6

US Data

More detail on page 4

Weather

More detail on page 7

****Extraordinary Assumptions: There are a lot of different data sources in this report not all of them match but aid to provide an overall picture of the current situation. COVID-19 Data Source Comparison - https://covid-19.splunkforgood.com/covid_19_datasource_comparison**

News

Fitbit's ventilator gets emergency FDA approval

- Wearable company Fitbit has officially unveiled the Fitbit Flow, a new ventilator with FDA approval for use during the COVID-19 pandemic. The ventilator has been granted emergency use authorization by the FDA, meaning it can only be used to treat people during the current health crisis. Fitbit tells The Verge that it hopes to sell the Flow for around \$5,000, significantly less than traditional ventilators that can cost up to \$50,000, production is scheduled to begin this month.
- Fitbit doesn't see the Flow as a like-for-like replacement for traditional ventilators. The Flow is designed around resuscitator bags used by paramedics, but features additional sensors and alarms to help monitor patients. The wearable company consulted with medical staff and practitioners while developing the ventilator, which it hopes will be easier to use than traditional ventilators.

<https://www.theverge.com/2020/6/4/21280132/fitbit-flow-ventilator-coronavirus-shortage-fda-emergency-use-authorization-hospitals>

How Drone Delivery Company Manna Transitioned From Food to Medical Supplies

- Bobby Healy, CEO of Manna, joins Cheddar Innovates to discuss how his company is using drones to help the most vulnerable populations during the pandemic.
- Each Drone can do about 100 deliveries per day
- Max weight is about 5-6 Lbs. But it more a volume issue.
- <http://www.manna.com/>

<https://cheddar.com/media/how-drone-delivery-company-manna-transitioned-from-food-to-medical-supplies>

Amazon warehouse workers sue over risk of COVID-19 infection

- A group of three Amazon warehouse employees who work out of the company's New York fulfillment centers have filed a lawsuit alleging the company put them and their families at risk of COVID-19 infection, according to a report from Bloomberg.
- The complaint accuses Amazon of fostering a work environment in which employees "were explicitly or implicitly encouraged to continue attending work and prevented from adequately washing their hands or sanitizing their workstations." It also claims the company, through quotas and disciplinary action, led workers to avoid social distancing and other safety measures to continue hitting metrics and to keep up with surging demand.
- Despite pledging to spend \$4 billion to deal with the effects of COVID-19, Amazon has come under fire for not doing enough to protect its workers and for cracking down on protests against the lack of health and safety measures at its warehouses. In late April, the company ended its indefinite unpaid leave policy and began requesting workers show up for shifts unless they specifically say COVID-19 poses a risk to them or their family members.
- Workers have been voicing criticism of Amazon for months now, claiming the company has failed to tell employees when coworkers have been infected and doesn't adequately clean facilities after reported infections to avoid any disruption in operations. At least eight Amazon workers have died from COVID-19 so far, although the company won't give out concrete numbers and has yet to disclose how many have become sick.

<https://www.theverge.com/2020/6/3/21279740/amazon-sued-nyc-warehouse-workers-covid-19-coronavirus-safety-measures>

Cleared for takeoff: Global airlines plan to add more flights

- Airlines from the United States to Australia are ramping up flights in June and July, boosting hopes for a pickup in tourist traffic even as bigger-spending business and global travel remain sluggish during the ongoing coronavirus pandemic.
- American Airlines said it plans to increase flights by 74 percent in July compared to this month.
- The busiest days next month will have about 4,000 flights, up from 2,300 in June, said Vasu Raja, American's senior vice president of network strategy. The July figure is equivalent to 40 percent of capacity a year earlier, compared with 30 percent in June, the airline said on Thursday. Capacity was even less in May, after a devastating collapse in flying spurred by the coronavirus pandemic.
- "Leisure travel has been the most missed activity during lockdown across age and income demographics, even more so than things like restaurants," Jason Guggenheim of Boston Consulting Group, which has surveyed consumers in the US and Europe, told the Reuters news agency.

<https://www.aljazeera.com/ajimpact/cleared-takeoff-global-airlines-plan-add-flights-200605012550397.html>

Related

Why the coronavirus is going to make flying even more stressful

- Physical distancing remains the best defense against the coronavirus, but it may not allow airlines to make a profit.
- The hodgepodge of measures airlines and airports have put in place to prevent passengers and crew from spreading the virus has made the experience of flying more stressful than it was before the pandemic.
- For instance, in Thailand, travelers are subjected to temperature checks before they can enter airports.
- In many United States departure terminals, chairs are blocked to enforce physical distancing and signs on the floor tell passengers to stand six feet apart. Announcements over the public address system remind travelers to keep masks on and frequently sanitize their hands.
- On Qatar's flag carrier, Qatar Airways, cabin crew are dressed in full protective gear, including goggles, masks and hazmat suits.
- The industry finds itself in a quandary, however. Physical distancing remains the best defence against the deadly new virus, but such measures may not make flying feasible or profitable for airlines.
- The International Air Transport Association (IATA) estimates such measures mean airlines would only be able to fill planes up to 62 percent of their capacity. But for a flight to make money, aircraft need it to be at least 77 percent full, IATA reckons.
- "It is not feasible for anyone to go somewhere and be subject to 14 days of quarantine,"

<https://www.aljazeera.com/ajimpact/coronavirus-flying-stressful-200531231143335.html>

One Good Thing

- Stories about the kindness of strangers and individuals who sacrifice for others during the coronavirus outbreak.

<https://apnews.com/OneGoodThing>

U.S. Data

Covid-19 Case Cluster (past 48 hours)

Social Impact COVID-19 Events

7 EVENTS
Past 48 hours

Map of news reports related to social impact events resulting from the COVID-19 outbreak in the United States, such as school closures, localized outbreaks, state of emergency declarations, etc.

DATE RANGE

Past 48 hours

TYPE OF EVENT ?

COVID-19 Case Clusters

About this Map | Developed by HealthMap



COVID-19 Case Clusters

The article describes a cluster of COVID-19 cases that represent higher than expected COVID-19 incidence within a local region (ex: a factory with a higher than expected COVID-19 incidence among its employees).

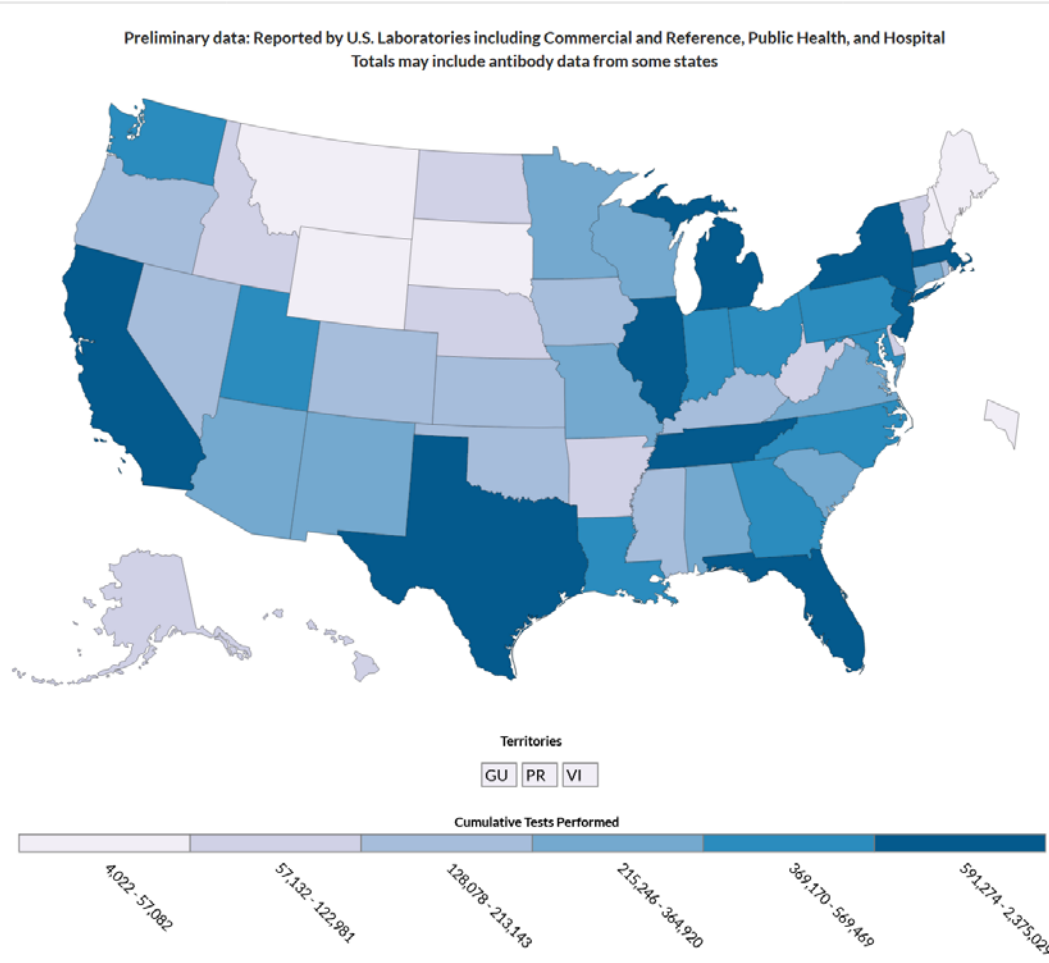
<https://www.cdc.gov/covid-data-tracker/index.html>

US Test Data

USA
19,811,243
TESTS REPORTED
CDC | Updated: Jun 4 2020 5:45PM

USA
2,265,135
POSITIVE TESTS
CDC | Updated: Jun 4 2020 5:45PM

USA
11%
OVERALL % POSITIVE
CDC | Updated: Jun 4 2020 5:45PM



COVID-19 Tests Performed by State (Commercial and Reference, Public Health, and Hospital)

State	# Tests Performed	% Positive
New York	2,375,029	11-20%
California	1,890,370	6-10%
Florida	1,662,587	6-10%
Massachusetts	1,050,787	11-20%
New Jersey	981,980	11-20%
Texas	881,980	6-10%
Illinois	728,351	11-20%
Tennessee	675,213	6-10%
Michigan	591,274	11-20%
Georgia	569,469	6-10%
Pennsylvania	454,661	11-20%
Louisiana	454,168	11-20%
Indiana	448,755	11-20%
Ohio	433,337	6-10%
Maryland	425,295	11-20%
Washington	396,331	6-10%
Utah	370,591	0-5%
North Carolina	369,170	11-20%
Virginia	364,920	11-20%
Alabama	315,045	11-20%
Arizona	299,057	6-10%
Wisconsin	283,117	6-10%
Missouri	276,406	6-10%
Connecticut	270,092	11-20%
New Mexico	253,454	0-5%
Minnesota	241,967	11-20%
South Carolina	215,246	6-10%
Oklahoma	213,143	0-5%

CDC | Updated: Jun 4 2020 5:45PM

<https://www.cdc.gov/covid-data-tracker/index.html>

State Data

<https://update.covid19.ca.gov/#top>
<https://covid19.ca.gov/>

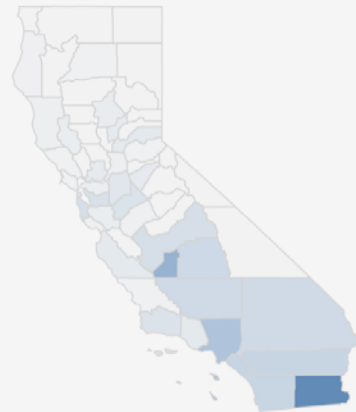
Where are COVID-19 hospitalized patients located in California?

The majority of hospitalized patients – 1,488 – are in Los Angeles County, followed by 296 in Orange County and 295 in San Diego County.

Number of positive COVID-19 hospital patients

- Positive Patients**
- Positive ICU Patients
- Suspected Patients
- Suspected ICU Patients

Positive Hospital Patients per 100K Population



Positive Hospital Patients by County

County	Number of Patients
Los Angeles	1,488
Orange	296
San Diego	295
Riverside	221
San Bernardino	157
Alameda	89
Imperial	69

+ Show All

+ a b | e a u





Weather

COVID-19 Weather Support

Issued:

1100 AM June 04, 2020

IMPACT SCALE

●
None

●
Minor


●
Moderate

●
High

●
Extreme

Resources

- <https://www.weather.gov/spot/>
- <https://inws.ncep.noaa.gov>
- <https://www.wrh.noaa.gov/sgx/event/dsstable.php>

(858) 675 - 8705
(24/7, Restricted) 

Weather.gov/SanDiego

7-day Forecast for Counties in far Southwest CA

Period June 4 - June 11 (24-hr)	Orange	SW San Bernardino	All Deserts	Western Riverside	San Diego
Thursday	Mild	Cooler	Continued Hot	Cooler	Mild
Friday	Mild/ Shower Late	Cooler/ Shower Late	Cooler Windy	Cooler/ Shower Late	Mild/ Shower Late
Saturday	Mild	NONE	Cooler Windy	NONE	Mild
Sunday	Mild	NONE	NONE	NONE	Mild
Monday	Warming	Warming	NONE	Warming	Warming
Tuesday	Warming	Warming	Warming	Warming	Warming
Wednesday	Warmer	Warmer	Warmer	Warmer	Warmer
Thursday	Warmer	Warmer	Warmer	Warmer	Warmer

Forecast Discussion

High pressure will remain in place today, bringing another day of near 110 degree heat across the Lower Deserts with slight cooling west of the mountains. More cooling in all areas through the weekend with windy conditions for the desert slopes into the deserts Friday and Saturday. There will also be a small chance for showers along and west of the mountains Friday night into early Saturday morning. Thunderstorms not expected, but we cannot completely rule out a chance of thunderstorms Friday afternoon in the mountains and High Desert. High pressure will bring warmer weather starting Monday, with the heating peaking toward the middle to end of next week.

Latest hazard threat table: <https://www.wrh.noaa.gov/sgx/event/dsstable.php>