



Daily Situation Summary

Monday, June 1, 2020

As of 10:00 AM

COVID-19 by the Numbers

06/01/2020

	Riverside	Imperial	Kern	Los Angeles	Orange	San Bernardino	San Diego	San Luis Obispo	Santa Barbara	Ventura	California	United States	Global
Total Cases	7,704	2,197	2,300	54,925	6,532	5,185	7,483	271	1,662	1,151	113,006	1,761,503	6,057,853
Cases Per Capita	323	1,219	260	544	206	243	227	96	375	136	289	534	79
Total Deaths	344	27	38	2,362	147	204	312	1	12	33	4,251	103,700	371,166
Deaths Per Capita	14.43	14.98	4.30	23.39	4.65	9.55	9.45	0.36	2.70	3.89	10.86	31.45	4.85
% of State's Cases	6.82%	1.94%	2.04%	48.60%	5.78%	4.59%	6.62%	0.24%	1.47%	1.02%	6.42%	29.08%	
Currently in Hospitals	195	73	59	1,389	283	136	306	3	22	25	2,973		
Currently in ICU	62	22	30	416	120	53	145	3	7	11	1,053		
Case Fatality Rate	4.5%	1.2%	1.7%	4.3%	2.3%	3.9%	4.2%	0.4%	0.7%	2.9%	3.8%	5.9%	6.1%
Population*	2,383,286	180,216	883,053	10,098,052	3,164,182	2,135,413	3,302,833	281,455	443,738	848,112	39,148,760	329,721,848	7,653,216,600
% of Population	6.09%	0.46%	2.26%	25.79%	8.08%	5.45%	8.44%	0.72%	1.13%	2.17%	0.03%	0.0230%	

Sources: CDPH, WHO, CDC

The date for which case statistics and hospital data were reported. Hospital COVID data are self-reported through a portal managed by the California Hospital Association and pulled at 2pm. COVID case statistics are reported by local health departments to CalREDIE and are pulled at 2pm. Hospital data and case statistics are integrated by the California Department of Technology and made available through the Open Data Portal the following morning.

*California-Demographics.com is made by Cubit – a demographic data provider & census.gov

News

More detail on page 2

US Data

More detail on page 4

State Data

More detail on page 6

Riverside County

More detail on page 8

Riverside County Food Resources

More detail on page 13

Weather

More detail on page 13

****Extraordinary Assumptions: There are a lot of different data sources in this report not all of them match but aid to provide an overall picture of the current situation. COVID-19 Data Source Comparison - https://covid-19.splunkforgood.com/covid_19_datasource_comparison**

News

India confirms more than 8,000 new Covid-19 cases

- Indian health authorities say 8,392 new coronavirus patients were registered in the past 24 hours -- the highest number of cases identified in a single day since the pandemic began.
- The previous high, 8,380 cases, was recorded yesterday.
- The country has now confirmed at least 190,535 cases of Covid-19, killing at least 5,394 people.
- Maharashtra, which is home to the cities of Mumbai, Pune and Nagpur, has recorded 67,655 confirmed cases -- more than any other state in India.

https://www.cnn.com/world/live-news/coronavirus-pandemic-06-01-20-intl/h_6f0992d976ec83aafd84bf3943b5f304

More than 500,000 coronavirus cases reported in Brazil

- Brazil has reported 16,409 cases of novel coronavirus over the past 24 hours, bringing the nationwide total to 514,849.
- Brazil is second only to the United States in its number of coronavirus cases.
- Dr. Carissa Etienne, the director of the Pan American Health Organization, said earlier this week that the Americas have "become the epicenter of the Covid pandemic."
- Brazil also recorded 480 new coronavirus-related fatalities over the past 24 hours, according to its health ministry, raising the overall death toll to 29,314.
- Brazil has the fourth-highest number of coronavirus deaths globally, according to Johns Hopkins University.

https://www.cnn.com/world/live-news/coronavirus-pandemic-06-01-20-intl/h_716423997f54c4c7e547143e7b056d4b

Pharmaceutical company starts first human trial of coronavirus antibody therapy

- The first patients to receive the therapy are in hospitals at Cedars-Sinai in Los Angeles, New York University's Grossman School of Medicine and Emory University in Atlanta, the company told CNN, and results are expected to be available by the end of June.
- "We've already started the manufacturing process to really scale this up without even knowing yet if it works for patients, because if it does work, we don't want to waste a single day, we want to have as much medicine as possible available to help as many people quickly," Dr. Dan Skovronsky, Eli Lilly's senior vice president and chief scientific officer, told CNN.

https://www.cnn.com/world/live-news/coronavirus-pandemic-06-01-20-intl/h_fc432a42c931b6bb546a70404c1c5d7e

Leaders concerned coronavirus could spread during protests

- New York Governor Andrew Cuomo said that while people have the right to protest, even during a pandemic, they also have a duty to protect the health of themselves and others.
- "I am extremely concerned when we're seeing mass gatherings. We know what's happening in our community with this virus," the mayor explained. Said Atlanta Mayor Keisha Lance Bottoms

<https://www.cnn.com/2020/06/01/health/protests-coronavirus-spread-concerns/index.html>

Health officials issue warning over relaxing lockdown too soon

- Health officials across the world have issued warnings that some countries could be relaxing their coronavirus lockdowns too early, raising the chances of new waves of infection.

https://www.cnn.com/world/live-news/coronavirus-pandemic-06-01-20-intl/h_75e8046a027d277f86f83a235fe74d08

Hurricane season in the US starts today, and it's going to be very different this year

- How cities along the US coast are preparing for a hurricane season like no other
- "The biggest challenge that we're facing is that when the evacuation order comes, that the people won't leave," said Frank Rollason, director of Emergency Management at Miami-Dade County. "That they'll think they're better off taking their chances at home than they are in groups of people who may be Covid positive. If they are ordered to evacuate they are safer in an evacuation center than in their home in an evacuation zone."
- "I need people to have the confidence that in the event they live in an evacuation zone and they're under mandatory evacuation. And there's a threat of a hurricane ... they have the confidence to leave and get out of harm's way. We can mitigate the effects of Covid-19. We cannot mitigate the effects of a hurricane," he said.
<https://www.cnn.com/2020/05/31/weather/hurricane-season-june-1/index.html>

One Good Thing

- Stories about the kindness of strangers and individuals who sacrifice for others during the coronavirus outbreak.
<https://apnews.com/OneGoodThing>

A group of fishermen caught 220 pounds of tuna and donated it to health care workers

- When five Hawaii fisherman took to sea, they had one goal in mind: feeding their local health care workers.
- One of the fishermen was Kyle Nakamoto, the executive producer of the diving show Hawaii Skin Diver TV, who told CNN the lucky group caught two yellowfin tuna totaling 220 pounds.
- The massive tuna was sent to a seafood distributor who cleaned, cooked, and prepared the tuna into more than 300 poke bowls, which were then delivered to Honolulu's Straub Medical Center and The Queen's Medical Center.

<https://www.cnn.com/2020/05/31/us/hawaii-fishermen-donate-220-pound-tuna-healthcare-workers-trnd/index.html>



103-year-old woman celebrates beating Covid-19 with a cold beer

- A 103-year-old Massachusetts woman who recovered from Covid-19 celebrated with a favorite drink -- a cold beer, her family told CNN.
- When Jennie Stejna tested positive for coronavirus in late April, her family began preparing for the worst, granddaughter Shelley Gunn said.
- At one point, her family was told that Stejna had stopped eating and drinking and might not make it through the night. They called her for one last goodbye, Gunn said.
- When Gunn's husband, a US Navy retiree, asked Stejna if she was ready to pass away, she responded "Hell yeah," according to the family.
- But instead of a grim phone call from Stejna's nursing home, on May 8 they received the news that she had tested negative, and was symptom-free, the family said.

https://www.cnn.com/world/live-news/coronavirus-pandemic-06-01-20-intl/h_1e2e49d8feefc4bfe6978f085dc76e43



U.S. Data

Covid-19 Case Cluster (past 48 hours)

Social Impact COVID-19 Events

4 EVENTS
Past 48 hours

Map of news reports related to social impact events resulting from the COVID-19 outbreak in the United States, such as school closures, localized outbreaks, state of emergency declarations, etc.

DATE RANGE

Past 48 hours

TYPE OF EVENT ?

COVID-19 Case Clusters

About this Map | Developed by iHealthMap

COVID-19 Case Clusters

The article describes a cluster of COVID-19 cases that represent higher than expected COVID-19 incidence within a local region (ex: a factory with a higher than expected COVID-19 incidence among its employees).

1 event 2-4 events 5+ events



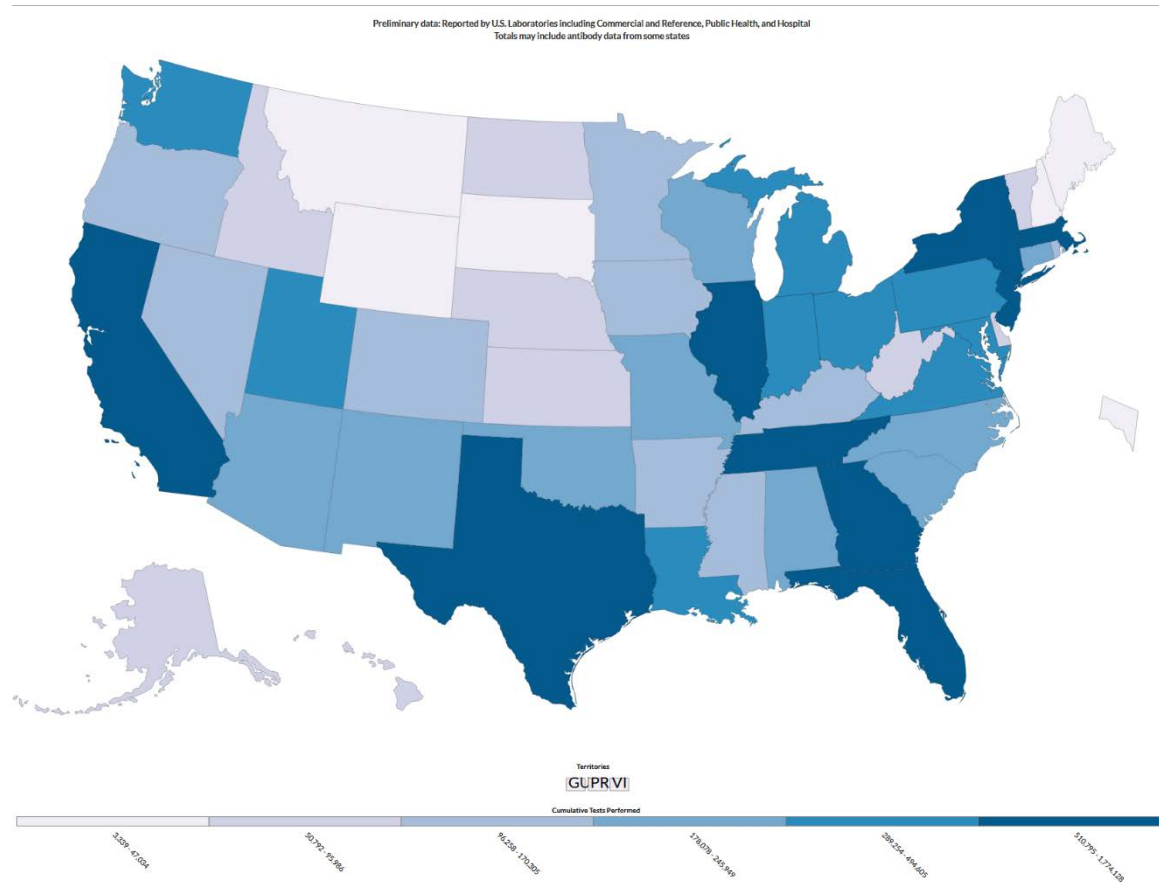
<https://www.cdc.gov/covid-data-tracker/index.html>

US Test Data

USA
16,794,182
TESTS REPORTED
CDC | Updated: May 31 2020 5:45PM

USA
2,012,929
POSITIVE TESTS
CDC | Updated: May 31 2020 5:45PM

USA
12%
**OVERALL %
POSITIVE**
CDC | Updated: May 31 2020 5:45PM



<https://www.cdc.gov/covid-data-tracker/index.html>

State Data

<https://update.covid19.ca.gov/#top>

<https://covid19.ca.gov/>

Resilience Roadmap

<https://covid19.ca.gov/roadmap/>

- The state is currently in Stage 2



Stage 2: Lower-risk workplaces

Gradually opening some lower risk workplaces with adaptations at a pace designed to protect public health and safety, starting with:

- Retail
- Manufacturing
- Offices (when telework not possible)
- Outdoor Museums
- Limited Personal Services

Limit time outside the home and travel only for permissible activities, such as healthcare, food, outdoor exercise and recreation (individuals and households only). Stage 1 and 2 work, and local shopping or other activities related to open sectors.

Some counties may move more quickly through stage 2, following guidelines laid out on the [county variance page](#).

Other counties may maintain more restrictive public health measures.

Monitor critical indicators and alter scope of reopening if necessary to protect public health and safety.

County variance

- Stage 2 expansion will be phased in gradually. Some communities may move through Stage 2 faster if they are able to show greater progress. Counties that have met the readiness criteria and worked with the California Department of Public Health can open more workplaces as outlined on the County Variance page.

County variance info

County criteria to move further ahead in the resilience roadmap:

County case metrics

Stable or down trending hospitalizations

- Stable hospitalizations of COVID individuals on a 7-day average of daily percent change of less than 5% **OR** no more than 20 COVID hospitalizations on any single day in the past 14 days

Cases per population count and test positivity rate

- Less than 25 new cases per 100,000 residents in the past 14 days **OR** less than 8% testing positive in the past 7 days

Track your county data

California Statistics

Total Population: 40,129,160

31,744

New Cases (Last 14 Days)

79.1 Per 100K

110,583 Total Cases

952

New Deaths (Last 14 Days)

2.4 Per 100K

4,213 Total Deaths

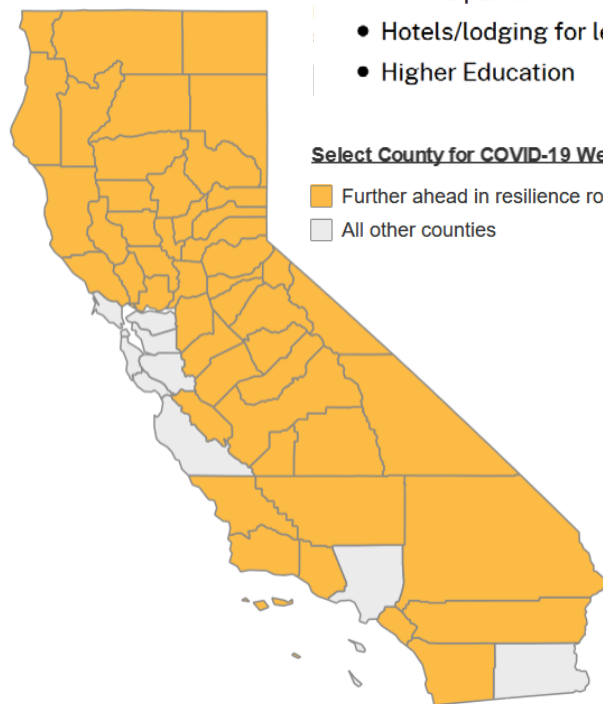
709,605

Tests Reported (Last 14 Days)

4.5% Test Positivity

1.3 Daily per 1,000 Residents

1,944,848 Total Tests Reported



Select County for COVID-19 Website

- Further ahead in resilience roadmap
- All other counties

The following are not open

The following sectors, businesses, establishments, or activities are **not permitted** to operate in the State of California at this time:

- Personal services such as nail salons, tattoo parlors, gyms and fitness studios
- Indoor museums, kids museums, gallery spaces, zoos and libraries
- Community centers, including public pools, playgrounds, and picnic areas
- Entertainment venues, such as movie theaters, gaming, gambling, arcade venues, pro sports,
- Hospitality services, such as bars, wineries, tasting rooms and lounges
- Nightclubs
- Concert venues
- Live audience sports
- Festivals
- Theme parks
- Hotels/lodging for leisure and tourism – non-essential travel
- Higher Education

Hospitals

Total vs Last 14 day change
367 Hospitals Reporting (71,384 Hospital Beds)

4,331

Hospitalized COVID-19 Patients (Suspected + Positive)

40 Patients

0.9% Decrease

1,324

ICU Hospitalized COVID-19 Patients (Suspected + Positive)

31 Patients

2.4% Decrease

36%

ICU Beds Available

76%

Ventilators Available

Equipment Distributed

46,117,846

N-95 Respirators

90,544,982

Procedure Masks

2,235,913

Gowns

6,045,284

Face Shields

25,533,763

Gloves

Updated May 31, 2020 at 11:00 am.



RIVERSIDE COUNTY COVID-19 CASES DATA SUMMARY

May 29, 2020

TOTAL CASES

7,486

NEW CASES

145

TOTAL DEATHS

323

NEW DEATHS

10

TOTAL RECOVERED

4,563

CURRENT HOSPITALIZED
(includes ICU)

202

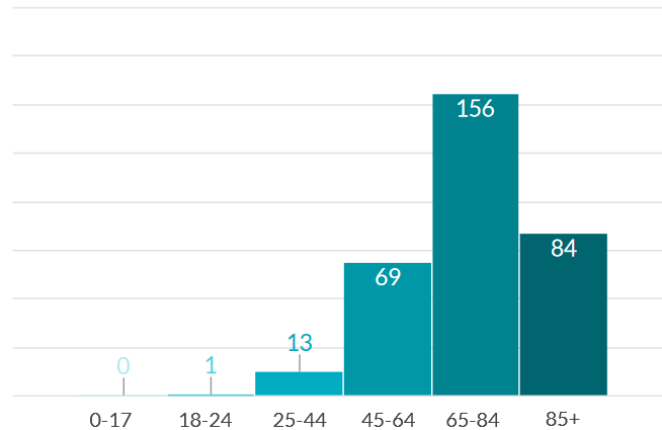
CURRENT ICU

62

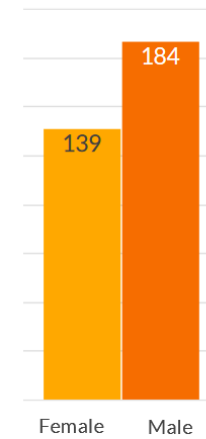
DOUBLING TIME

31.0

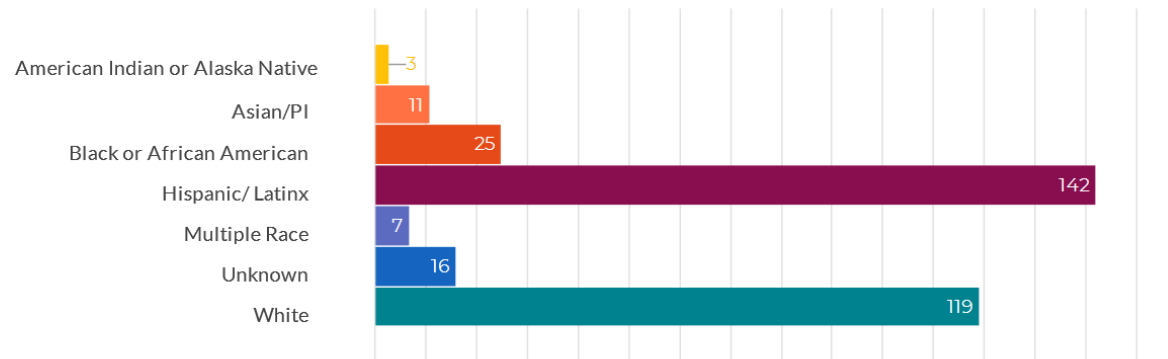
COVID-19 Deaths by Age Group



COVID-19 Deaths by Sex



COVID-19 Deaths by Race/Ethnicity

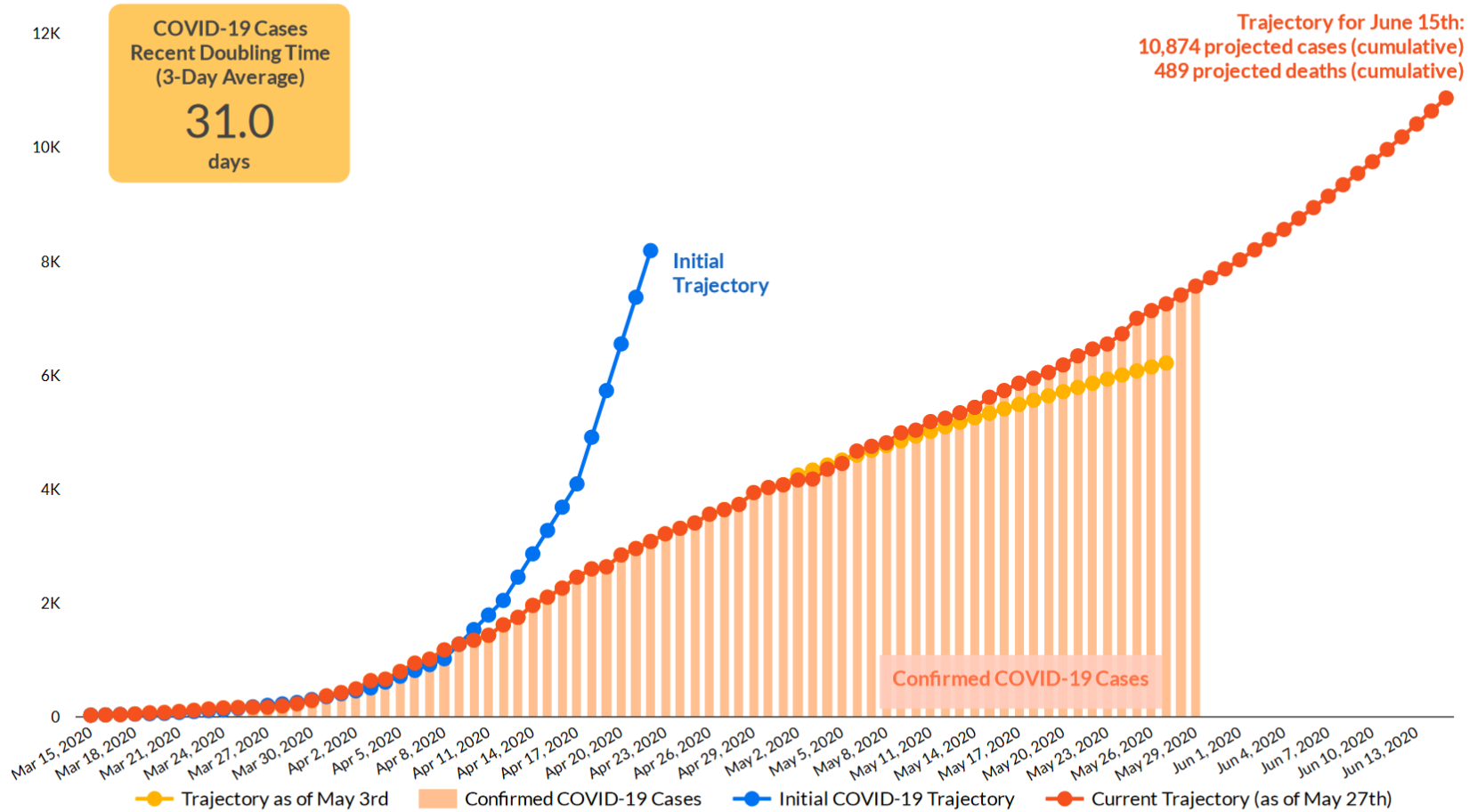


American Indian or Alaska Native % Death	Asian/PI % Death	Black or African American % Death	Hispanic/Latinx % Death	Multiple Race % Death	Unknown % Death	White % Death
0.9	3.4	7.7	44	2.2	5	36.8



RIVERSIDE COUNTY COVID-19 TRAJECTORY

Feb 21, 2020 - May 29, 2020



MAJOR EVENTS:

- March 13th: Public Health Officer orders school closure
- March 19th: California Governor orders stay at home
- April 4th: Public Health Officer orders stay at home and cover the face
- April 18th: Asymptomatic testing begins
- May 1st: Riverside County reverts to State orders
- May 8th: Riverside County begins Phase 2
- May 22nd: Riverside County accelerates to Phase 2.5



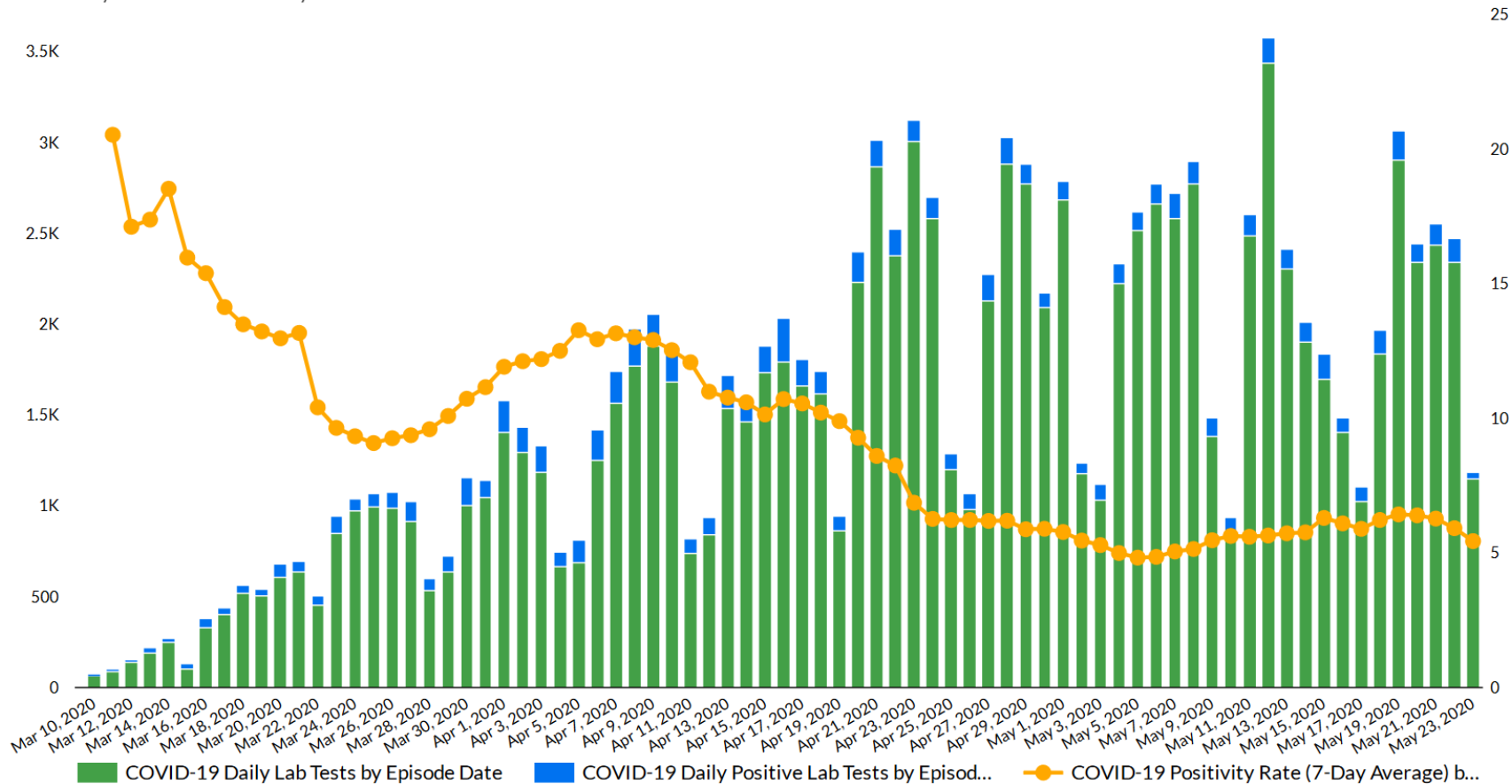
RIVERSIDE COUNTY COVID-19 CASES POSITIVITY RATE - By Report Date

Major Events:

- March 13th: Public Health Officer orders school closure
- March 19th: California Governor orders stay at home
- April 4th: Public Health Officer orders stay at home and cover the face
- April 18th: Asymptomatic testing begins
- May 1st: Riverside County reverts to State orders
- May 8th: Riverside County begins Phase 2
- May 22nd: Riverside County accelerates to Phase 2.5

POSITIVE*
8,052

TESTS RESULTED*
112,402



*Based on case report date (Episode Date)

*Numbers are based on case report date (Episode Date) and may slightly differ from confirmed case counts.

Explanations on activities from the state

Please note, these are responses from the state and pertain to the state's orders

Are CRV redemptions centers included in the permitted recycling operation under the State Order?

Local CRV redemption centers are included in permitted recycling operations.

The list of Essential Workforce and any updates made to it can be found here:

<https://covid19.ca.gov/img/EssentialCriticalInfrastructureWorkers.pdf> and all available information as to the stages can be found: <https://covid19.ca.gov/roadmap/#guidance>.

Are skydiving businesses permitted to operate in the current stage of reopening?

Skydiving businesses are not currently permitted to operate.

Please continue to follow the Governor's orders and updates here <https://covid19.ca.gov/stay-home-except-for-essential-needs/#top>

Can two seat boats can be rented to two people from the same household under the State Order?

Two seat boats may be rented to people from the same household.

The list of Essential Workforce and any updates made to it can be found here:

<https://covid19.ca.gov/img/EssentialCriticalInfrastructureWorkers.pdf> and all available information as to the stages can be found: <https://covid19.ca.gov/roadmap/#guidance>.

Is the proposal from the city of Norco, about interactive water features at city parks such as a splash pad, permitted under the State Order?

As to the interactive water features, parks may be closed to prevent the spread of the virus, please check with the local officials as to whether a park in question is closed. If the park is open, then the interactive water feature may be permitted with proper social distancing.

As to the two proposals pertaining to picnics, picnics are currently only permitted with stay at home household members only.

As to the drive through mobile graduation, drive in or drive through options are permissible as long as social distancing is in place and only members of the same households are in the same car.

The list of Essential Workforce and any updates made to it can be found here:

<https://covid19.ca.gov/img/EssentialCriticalInfrastructureWorkers.pdf> and all available information as to the stages can be found: <https://covid19.ca.gov/roadmap/#guidance>.

Are florists an essential business under the Stay-at-Home order?

Florists are permitted in Stage 2 under curbside retail starting with curbside pickup and delivery only until further notice.

Please find any updates or changes to the list of essential workforce here <https://covid19.ca.gov/essential-workforce/> and updates or changes to the stages here <https://covid19.ca.gov/roadmap>

Are summer camps under the Stay-at-Home order?

Summer camps for children, with or without restriction are not permitted.

Please find any updates or changes to the stages here <https://covid19.ca.gov/roadmap>.

Is hosting an outdoor church service based on the [proposal from the City of Norco](#) permitted under the Stay-at-Home order?

Mass gatherings are not permitted under the Stay-at-Home order.

Please find any updates or changes to the stages here <https://covid19.ca.gov/roadmap>.

Proposal from the City of Norco

https://www.rivcoph.org/Portals/0/Documents/CoronaVirus/May/FAQs/Proposal_to_Host_Outdoor_Church_Service_at_Silverlakes_Park.pdf?ver=2020-05-15-115446-157×tamp=1589568915032

Are drive in gatherings permitted under the state order?

Drive in and drive through gatherings are permissible as long as all public health precautions and social distancing is maintained and only member of the same household are in the same car.

You can find more information and updates to the list and FAQ here <https://covid19.ca.gov/stay-home-except-for-essential-needs/#top>.

Are garage/yard/sidewalk sales permitted under the state order?

These are permitted in Stage 2, regardless of whether a county has a variance and are considered curbside retail.

Is outdoor dining permitted in counties without a variance?

Outdoor dining is not permitted in counties without a variance.

You can follow the latest information about what is only open in variance counties here <https://covid19.ca.gov/roadmap-counties/>.

Riverside County Food Resources

Find locations providing food and meals during COVID-19 emergency in Riverside County

<https://countyofriverside.maps.arcgis.com/apps/webappviewer/index.html?id=52ca2b425fd14b2387f3676bf6db294e&extent=-13100249.8739%2C3944965.339%2C-12940037.8626%2C4040817.3725%2C102100>

Weather

Tropical Outlook – Five Day



Central Pacific



Eastern Pacific



Atlantic

Disturbance 1 (as of 8:00 a.m. ET)

- Eastern Pacific Tropical Storm Amanda is located over the Yucatan peninsula of Mexico
- Forecast to move NW over the SE portion of the Bay of Campeche
- Environmental conditions are expected to be conducive to support development
- Formation chance through 48 hours: High (80%)
- Formation chance through 5 days: High (80%)

Current Disturbances & 5 Day Cyclone Formation: < 40% | 40-60% | > 60%
Tropical / Sub-Tropical Cyclone: Depression | Storm | Hurricane | Post-Tropical Cyclone / Remnants

Potential track area: Day 1-3 | Day 4-5

Watches: Hurricane | Trop Stm

Warnings: Hurricane | Trop Stm | Hurricane | Trop Stm

Current wind extent: Hurricane | Trop Stm | Hurricane | Trop Stm

COVID-19 Weather Support

Issued:

1100 AM May 31, 2020



IMPACT SCALE



Resources

- <https://www.weather.gov/spot/>
- <https://inws.ncep.noaa.gov>
- <https://www.wrh.noaa.gov/sgx/event/dstable.php>

(858) 675 - 8705
(24/7, Restricted)



Weather.gov/SanDiego

7-day Forecast for Counties in far Southwest CA

Period May 31 - June 7 (24-hr)	Orange	SW San Bernardino	All Deserts	Western Riverside	San Diego
Sunday	Mild	Warm	Warm Breezy	Warm	Mild
Monday	Mild	Warm	Warm	Warm	Mild
Tuesday	Warm Inland	Warm	Warm	Warm	Warm Inland
Wednesday	Warm Inland	Peak of Warmth	Peak of Warmth	Peak of Warmth	Warm Inland
Thursday	Mild	Cooler	Still Very Warm	Cooler	Mild
Friday	Mild	NONE	Cooler Breezy	NONE	Mild
Saturday	Mild	NONE	Cooler	NONE	Mild
Sunday	Mild	Warmer	Warmer	Warmer	Mild

Forecast Discussion

A storm system will develop and remain offshore of Southern California early to mid-week. High pressure building over the 4-corners area will bring warm/hot weather to the inland valleys and the deserts Tuesday through Thursday. The hottest day will likely be Wednesday, but the heat will linger in the deserts through Thursday. Temperatures will be around 5 to 10 degrees above average. Friday and Saturday will be cooler in all areas. There will also be a small chance for showers Friday.

Latest hazard threat table: <https://www.wrh.noaa.gov/sgx/event/dstable.php>