



## Daily Situation Summary Tuesday, April 28, 2020 As of 10:00 AM

**Always check with trusted sources for the latest accurate information about novel coronavirus.**

- **World Health Organization**  
<https://www.who.int/>
- **Centers for Disease Control and Prevention**  
<https://www.cdc.gov/>
- **Food and Drug Administration**  
<https://www.fda.gov/emergency-preparedness-and-response/counterterrorism-and-emerging-threats/coronavirus-disease-2019-covid-19>
- **California Department of Public Health**  
<https://www.cdph.ca.gov/>
- **County Department/Public Health**  
<https://www.rivcoph.org/>
- **Residents in most counties can call 2-1-1**

### **This can't be real? Fact-checking resources.**

- Boom - <https://www.boomlive.in/>
- Snopes - <https://www.snopes.com/>
- FEMA - <https://www.fema.gov/coronavirus-rumor-control>
- WHO - <https://www.who.int/about/communications/cyber-security>

### **Need PPE?** - I have not vetted these sources

- 1Point3Acres - <https://coronavirus.1point3acres.com/ppe>
- Biotechnology Innovation Organization (BIO).  
The BIO Coronavirus Hub – [https://hub.bio.org/landing-page/community-home?mkt\\_tok=eyJpIjoiWW1FeFpqYzJPRFJrWWpKaSIsInQiOiJaS1ZpSWE2czZpdFwvUETkbcSxUFZDK29MdzA2K3FMNTEyRDlocjJyMDJDN2FoRzR3RHYxU1o3QTY2QWczdmdvbGlpcCRHZzUTI EQ3ZUWklyZXFPmzdxQ0NFWU5EeFFjU0ZqWXBwT1wvQlZZVnk5IVTZPMldcL3NlBTJRXC96M042YWtOclAifQ%3D%3D](https://hub.bio.org/landing-page/community-home?mkt_tok=eyJpIjoiWW1FeFpqYzJPRFJrWWpKaSIsInQiOiJaS1ZpSWE2czZpdFwvUETkbcSxUFZDK29MdzA2K3FMNTEyRDlocjJyMDJDN2FoRzR3RHYxU1o3QTY2QWczdmdvbGlpcCRHZzUTI EQ3ZUWklyZXFPmzdxQ0NFWU5EeFFjU0ZqWXBwT1wvQlZZVnk5IVTZPMldcL3NlBTJRXC96M042YWtOclAifQ%3D%3D)
- FEMA PPE exchange- Operates like any other Adobe connect page  
No log-in required-- <https://fema.connectsolutions.com/ppeexchange>

# Quick Reference Sheet

## Global Update:

**Total cases:** 2,883,603 (85,517 new)  
**Total deaths:** 198,842 ( 5,955 new)  
More detail on page 3

## National Update:

**Total cases:** 957,875  
**Total deaths:** 53,922  
More detail on page 3

## News

More detail on page 4

## State California Update:

**Total cases:** 43,464  
**Total deaths:** 1,755  
More detail on page 6

## Riverside County:

**Total cases:** 3,646  
**Total deaths:** 141  
More detail on page 8

## Education

More detail on page 10

## Weather

More detail on page 10

**\*\*Extraordinary Assumptions: There are a lot of different data sources in this report not all of them match but aid to provide an overall picture of the current situation**  
**COVID-19 Data Source Comparison - [https://covid-19.splunkforgood.com/covid\\_19\\_datasource\\_comparison](https://covid-19.splunkforgood.com/covid_19_datasource_comparison)**

## Global Update:

**Total cases: 2,883,603 (85,517 new)**  
**Total deaths: 198,842 ( 5,955 new)**

[https://www.who.int/redirect-pages/page/novel-coronavirus-\(covid-19\)-situation-dashboard](https://www.who.int/redirect-pages/page/novel-coronavirus-(covid-19)-situation-dashboard)

## National Update:

### Cases of COVID-19 Reported in the US, by Source of Exposure

**Total cases: 957,875**  
**Total deaths: 53,922**

Numbers close out at 4 p.m. the day before reporting

<https://www.cdc.gov/coronavirus/2019-ncov/cases-updates/cases-in-us.html>

## COVID-19 Situation in the Region of the Americas as of 27 April 2020 (14:00 EST)

- An additional 39,084 cases and 1,716 deaths were reported in the past 24 hours, bringing the regional total close to 1.2 million cases including 66,608 deaths , a 3% relative increase in both total cases and deaths compared to the previous day.

<https://www.paho.org/en/topics/coronavirus-infections/coronavirus-disease-covid-19>

Cumulative confirmed and probable COVID-19 cases reported by countries and territories in the Americas, as of 27 April 2020 Updated as of 2PM									
Subregion	Country/Territory	Transmission Type	Cases (Confirmed)	Probable Cases	Deaths (Confirmed)	Probable Deaths	Recovered	Population (in 1,000s)	
North America	Canada	Community transmission	47,316	11	2,617		16,916	37,742	
	Mexico	Community transmission	14,677		1,351		1,439	128,933	
	United States of America (the)	Community transmission	960,916		49,170	5,228	91,036	331,003	
	<b>Total</b>		<b>1,022,909</b>	<b>11</b>	<b>53,138</b>	<b>5,228</b>	<b>109,391</b>	<b>497,678</b>	
Central America	Belize	Sporadic cases	18		2		5	398	
	Costa Rica	Clusters of cases	695		6		264	5,094	
	El Salvador	Clusters of cases	323		8		89	6,486	
	Guatemala	Clusters of cases	500		15		49	17,916	
	Honduras	Clusters of cases	661		61		69	9,905	
	Nicaragua	Undetermined	13		3		7	6,625	
	Panama	Community transmission	5,779		165		369	4,315	
	<b>Total</b>		<b>7,989</b>		<b>260</b>		<b>852</b>	<b>50,737</b>	
	South America	Argentina	Community transmission	3,892		192		1,140	45,196
		Bolivia	Clusters of cases	950		50		80	11,673
Brazil		Community transmission	61,888		4,205		30,152	212,559	
Chile		Community transmission	13,813		198		7,327	19,116	
Colombia		Community transmission	5,379		244		1,133	50,883	
Ecuador		Community transmission	23,240		663	1,138	2,660	17,643	
Paraguay		Community transmission	228		9		93	7,133	
Peru		Community transmission	27,517		728		7,422	32,972	
Uruguay		Clusters of cases	606		15		375	3,474	
Venezuela (Bolivarian Republic of)		Clusters of cases	325		10		137	28,436	
<b>Total</b>			<b>137,838</b>		<b>6,314</b>	<b>1,138</b>	<b>50,519</b>	<b>429,084</b>	
Caribbean and Atlantic Ocean Islands	Anguilla	Sporadic cases	3				1	15	
	Antigua and Barbuda	Clusters of cases	24		3		10	98	
	Aruba	Clusters of cases	100		2		73	107	
	Bahamas (the)	Clusters of cases	80		11		22	393	
	Barbados	Clusters of cases	79		6		39	287	
	Bermuda	Clusters of cases	109		6		39	62	
	Cayman Islands	Clusters of cases	70		1		8	66	
	Cuba	Clusters of cases	1,389		56		525	11,327	
	Curacao	Sporadic cases	16	0	1		12	164	
	Dominica	Clusters of cases	16				13	72	
	Dominican Republic (the)	Community transmission	6,293		282		993	10,848	
	French Guiana	Clusters of cases	111		1		88	299	
	Grenada	Clusters of cases	18				7	113	
	Guadeloupe	Clusters of cases	149		10		95	400	
	Guyana	Clusters of cases	74	1	8		12	787	
	Haiti	Clusters of cases	74		6		7	11,403	
	Jamaica	Clusters of cases	305		7		28	2,961	
	Martinique	Clusters of cases	175		14		77	375	
	Montserrat	Sporadic cases	11		1		2	5	
Puerto Rico	Clusters of cases	1,389		53	31		2,861		
Saint Barthelemy	Sporadic cases	6				6	10		
Saint Kitts and Nevis	Sporadic cases	15				4	53		
Saint Lucia	Sporadic cases	15				15	184		
Saint Martin	Sporadic cases	38		3		24	39		

<https://ais.paho.org/phi/viz/COVID19Table.asp>

## News

### **Buy a mask or food?': South Asia's poor face stark choice**

- Wearing a mask in public is now compulsory in most places in India, Pakistan and Sri Lanka and advised by Afghanistan and Bangladesh, resulting in soaring demand and prices.
- With a basic disposable mask now costing up to \$7 in some places, that has created a new form of inequality in cities where hundreds of millions live in cramped, unhygienic conditions.
- "I have earned less than 100 afghani (\$1.32) today. What am I going to do?" Khan told the Reuters news agency in the Afghan capital Kabul. "Should I buy a mask or food for my family?"

<https://www.aljazeera.com/news/2020/04/mask-food-south-asia-poor-face-stark-choice-200428104653625.html>

### **UK children dying of new disease 'possibly linked to coronavirus'**

- Some children in the United Kingdom with no underlying health conditions have died from a rare inflammatory syndrome which researchers believe to be linked to COVID-19, Health Secretary Matt Hancock said on Tuesday.
- Doctors in northern Italy, one of the world's hardest-hit areas during the pandemic, have reported extraordinarily large numbers of children under the age of nine with severe cases of what appears to be Kawasaki disease, more common in parts of Asia.
- Kawasaki disease has no known cause and is associated with fever, skin rashes, swelling of glands, and in severe cases, inflammation of the arteries of the heart.
- Britain's National Health Service says the syndrome only affects about eight in every 100,000 children every year, most of them under the age of five.

<https://www.aljazeera.com/news/2020/04/uk-children-dying-disease-possibly-linked-coronavirus-200428100151216.html>

### **Georgians Turn to Public Health Data for Answers but Only Get More Confused**

- The Department of Public Health's published data on coronavirus cases, hospitalizations and deaths to draw their own conclusions on if it's safe to return to barber shops and restaurants.
- Wednesday's DPH count shows that new confirmed cases of the novel coronavirus jumped by more than 900 in a single day. Another count it released at the same time used a different method and showed they only rose by 31.

[https://www.governing.com/now/Georgians-Turn-to-Public-Health-Data-for-Answers-but-Only-Get-More-Confused.html?utm\\_term=READ%20MORE&utm\\_campaign=How%20Governors%2C%20Not%20Congress%2C%20Emerged%20as%20Trump%5Cu2019s%20Opposition&utm\\_content=email&utm\\_source=Act-On+Software&utm\\_medium=email](https://www.governing.com/now/Georgians-Turn-to-Public-Health-Data-for-Answers-but-Only-Get-More-Confused.html?utm_term=READ%20MORE&utm_campaign=How%20Governors%2C%20Not%20Congress%2C%20Emerged%20as%20Trump%5Cu2019s%20Opposition&utm_content=email&utm_source=Act-On+Software&utm_medium=email)

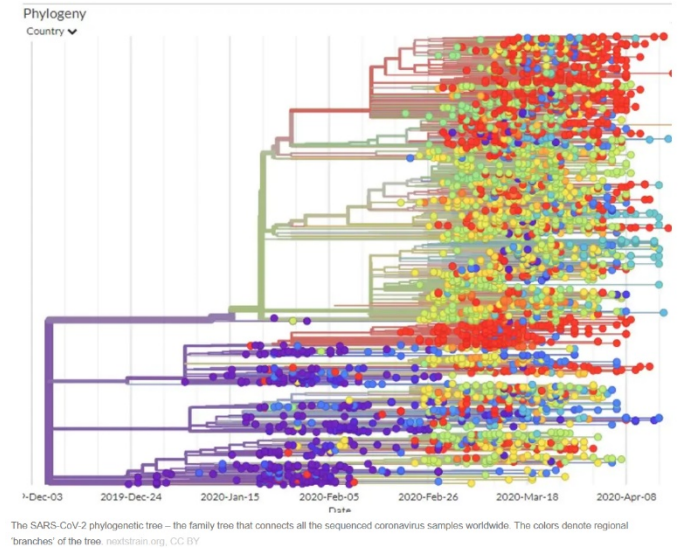
### **Businesses See Benefits in Employees Working from Home**

- Businesses of all sizes say they've seen benefits to having employees working from home instead of a traditional office setting. Employees have enjoyed the conveniences of home offices, and those with young children have more flexible schedules. Companies, meanwhile, say they've noticed employees have been more productive amid the pandemic, free from workplace distractions like unnecessary meetings
- There are significant opportunities for companies to save money if their employees work from home, though. Reducing rent costs by having smaller offices could be especially appealing to companies that are struggling due to the coronavirus

[https://www.governing.com/work/Businesses-See-Benefits-in-Employees-Working-from-Home.html?utm\\_term=Businesses%20See%20Benefits%20in%20Employees%20Working%20from%20Home&utm\\_campaign=How%20to%20Sharpen%20Our%20Fiscal%20Tools%20to%20Fund%20Infrastructure&utm\\_content=email&utm\\_source=Act-On+Software&utm\\_medium=email](https://www.governing.com/work/Businesses-See-Benefits-in-Employees-Working-from-Home.html?utm_term=Businesses%20See%20Benefits%20in%20Employees%20Working%20from%20Home&utm_campaign=How%20to%20Sharpen%20Our%20Fiscal%20Tools%20to%20Fund%20Infrastructure&utm_content=email&utm_source=Act-On+Software&utm_medium=email)

## The coronavirus genome is like a shipping label that lets epidemiologists track where it's been

- Just looking at an infected person doesn't tell you where their version of the coronavirus came from, and SARS-CoV-2 doesn't have a bar code you can scan to allow you to track its travel history. However, its genetic sequence is almost as good for providing some insight into where the virus has been.
- Mutations can occur every time the virus replicates its genome, so that over time mutations accumulate in the viral genome. For example, in place of the "word" CAT, the new virus has GAT. The virus carries these minor modifications as it moves from one person to the next host. These mutations behave like a passport stamp. No matter where you go next, previous stamps in your passport still show where you've been.



[https://theconversation.com/the-coronavirus-genome-is-like-a-shipping-label-that-lets-epidemiologists-track-where-its-been-136826?utm\\_medium=email&utm\\_campaign=Latest+from+The+Conversation+for+April+27+2020+-+1605215385&utm\\_content=Latest+from+The+Conversation+for+April+27+2020+-+1605215385+Version+A+CID\\_d128ca6aa9833dc2c365925bf7b94582&utm\\_source=campaign\\_monitor\\_us&utm\\_term=The+coronavirus+genome+is+like+a+shipping+label+that+lets+epidemiologists+track+where+its+been&fbclid=IwAR0XxfZPb2dODH-6OL8\\_45I1pjZ0cABncPvWmQpwimFG6n1Ht6fFLRhRAWU](https://theconversation.com/the-coronavirus-genome-is-like-a-shipping-label-that-lets-epidemiologists-track-where-its-been-136826?utm_medium=email&utm_campaign=Latest+from+The+Conversation+for+April+27+2020+-+1605215385&utm_content=Latest+from+The+Conversation+for+April+27+2020+-+1605215385+Version+A+CID_d128ca6aa9833dc2c365925bf7b94582&utm_source=campaign_monitor_us&utm_term=The+coronavirus+genome+is+like+a+shipping+label+that+lets+epidemiologists+track+where+its+been&fbclid=IwAR0XxfZPb2dODH-6OL8_45I1pjZ0cABncPvWmQpwimFG6n1Ht6fFLRhRAWU)

## The computer algorithm that was among the first to detect the coronavirus outbreak

- On New Year's Eve, a small company in Canada was among the first to raise the alarm about an infectious disease outbreak. Its computer algorithm calculated where the virus might spread next. The technology could change the way we fight another contagion.

[https://www.cbsnews.com/news/coronavirus-outbreak-computer-algorithm-artificial-intelligence/?fbclid=IwAR02L49YeNHs\\_URsrlXtKDFbSdvWu2Kac87CpDlJM3VC289jecCsR1\\_LQw](https://www.cbsnews.com/news/coronavirus-outbreak-computer-algorithm-artificial-intelligence/?fbclid=IwAR02L49YeNHs_URsrlXtKDFbSdvWu2Kac87CpDlJM3VC289jecCsR1_LQw)

## World leaders except U.S. and China commit to collaborate on defeating COVID-19

- Leaders of national governments, international organizations, philanthropies and biopharmaceutical trade associations Friday pledged their support and commitment to the Access to COVID-19 Tools (ACT) Accelerator.
- The U.S. and China are among the few countries that have not backed the initiative, which hopes to raise €7.5 billion (\$8.2 billion) via a May 4 pledging conference.

[https://www.biocentury.com/article/305002?fbclid=IwAR1Dj6cyyLdVeA3B6ca4Wiei\\_jpA53OCChZQWCaz26E4OoWO5\\_wj6SYuUvQ](https://www.biocentury.com/article/305002?fbclid=IwAR1Dj6cyyLdVeA3B6ca4Wiei_jpA53OCChZQWCaz26E4OoWO5_wj6SYuUvQ)

## Riverside County coronavirus deaths jump by 23, setting daily record

- Monday, April 27, set a new single-day record for deaths from the novel coronavirus, adding 23 to the death toll from Sunday and bringing the total to 141.

<https://www.pe.com/2020/04/27/riverside-county-coronavirus-deaths-jump-by-23-setting-daily-record/>

## Riverside County lists nursing homes with large COVID-19 outbreaks after more than 650 infected at long-term care facilities

- With more than 650 people infected with the coronavirus at local long-term care facilities, Riverside County on Monday released a list of assisted-living homes with large COVID-19 clusters.

<https://www.newsbreak.com/news/0OtSmJuJ/riverside-county-lists-nursing-homes-with-large-covid-19-outbreaks-after-more-than-650-infected-at-long-term-care-facilities>

## Coronavirus Face Mask Scam: 2 Inland Empire Men Charged By Feds

- A Riverside man and his business partner are accused of attempting to sell hundreds of thousands of face masks they either didn't own or didn't have as part of a scheme to exploit distributors in need of essentials amid the coronavirus emergency, federal prosecutors said Monday.
- "The defendants also falsely claimed that ICIG had contracts and agreements in place to resell millions of masks and attempted to pressure a potential purchaser to wire more than \$4 million to secure those masks," according to a U.S. Attorney's Office statement.

<https://patch.com/california/lakeelsinore-wildomar/s/h3hg7/coronavirus-face-mask-scam-2-inland-empire-men-charged-feds>

## State California Update:

### COVID-19 in California by the Numbers

**Total cases:** 43,464

**Total deaths:** 1,755

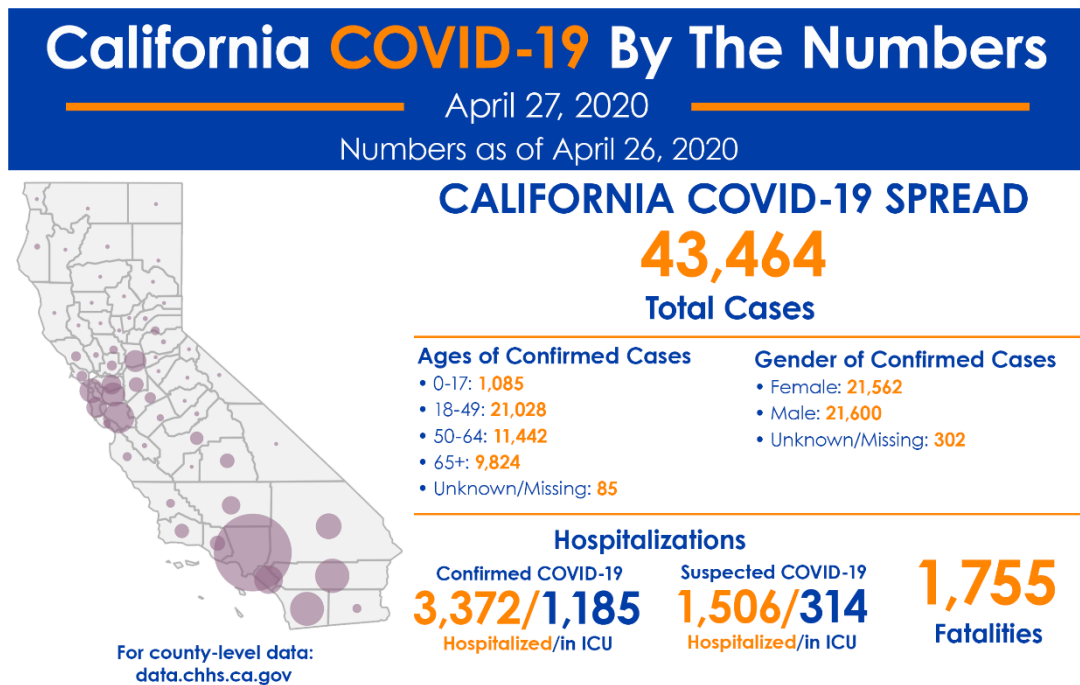
Estimated Population 39,148,760

Note: The following numbers reflect information received from local health jurisdictions as of 2 p.m. PDT.

More current numbers may be available from local health jurisdictions.

<https://www.cdph.ca.gov/Programs/CID/DCDC/Pages/Immunization/nCoV2019.aspx>

<https://covid19.ca.gov/>



Stay Home. Save Lives.

[covid19.ca.gov](http://covid19.ca.gov)



# How are COVID-19 cases progressing?

Data as of April 27, 2020 at 11:00 am.

There were 1,300 new confirmed cases Sunday. The total number of deaths is 1,755, an increase of 45 from Saturday.



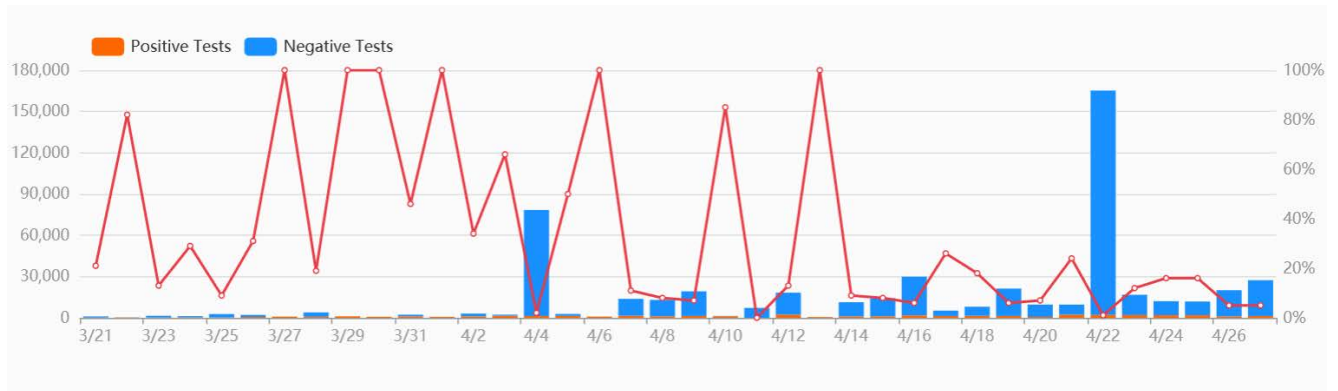
<https://update.covid19.ca.gov/#top>

## Testing Data

State	Positive	Negative	Pending	Total Tests (Population)
CA <span>i</span>	43,464 7.9%	509,945	0	553,409 (39,512,223)

Test Locations:

- San Francisco
- Palo Alto
- Hayward
- San Jose
- San Mateo
- Lake Elsinore
- Sacramento
- Martinez
- San Fernando Valley
- L.A. city
- L.A. city
- L.A. city
- L.A. city
- L.A. city
- Los Angeles
- Los Angeles
- Los Angeles
- L.A. city
- L.A. city
- L.A. city
- Fremont
- El Centro
- Calexico
- San Joaquin



<https://coronavirus.1point3acres.com/en/test>

# Local SOCAL County Updates:

## Riverside County:

### COVID-19 by the Numbers

Total cases: 3,646

Total deaths: 141

Estimated Population: 2,424,790

<https://www.rivcoph.org/>

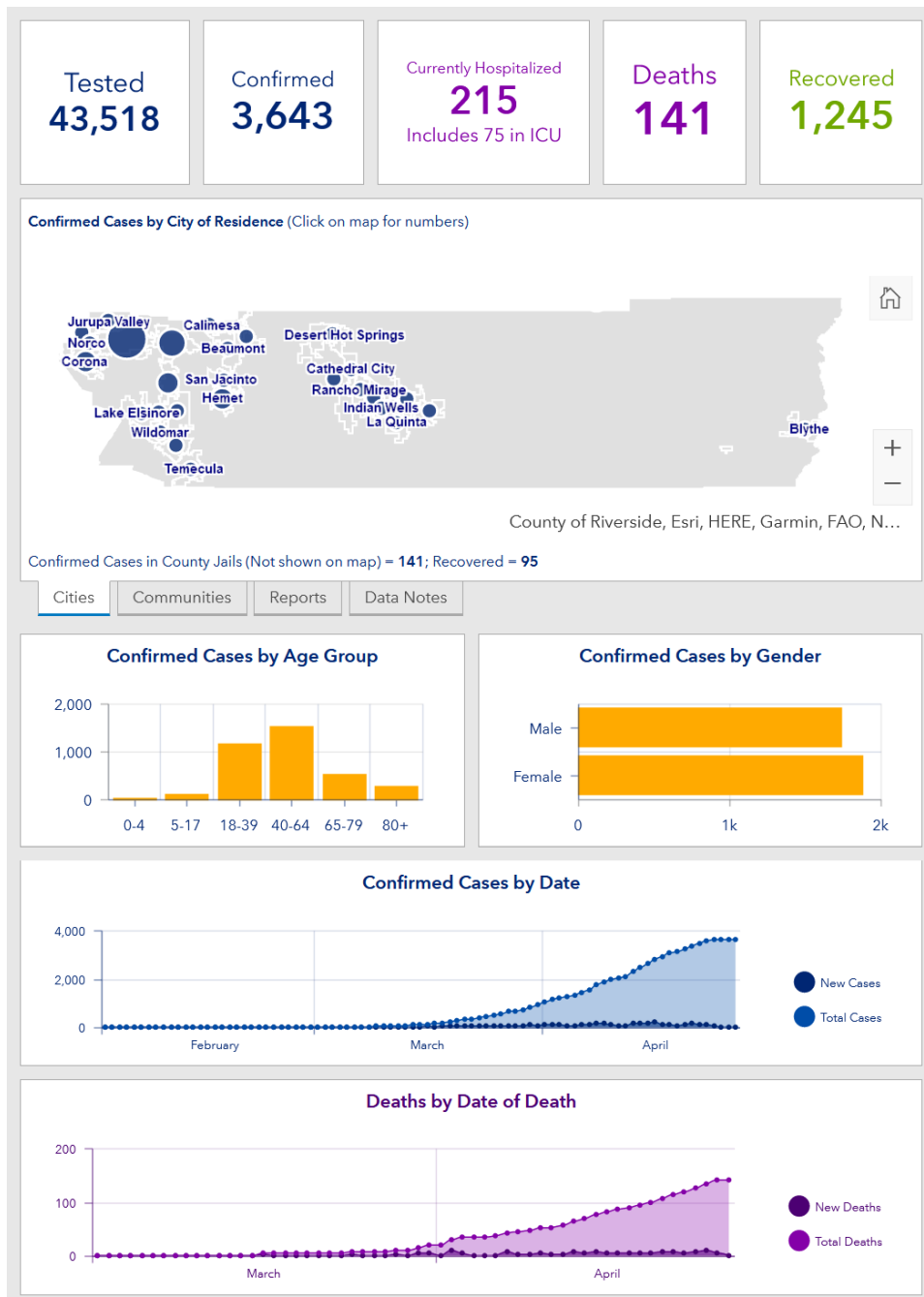
<https://www.rivcoph.org/coronavirus>

## RUHS Public Health:

Confirmed cases of coronavirus increases in skilled nursing facilities [English](#) | [Spanish](#)

- Watch the Daily Updates

<https://vimeo.com/showcase/7000995>





## Other Local County Links

### Imperial County:

Estimated Population 180,216

<http://www.icphd.org/health-information-and-resources/healthy-facts/covid-19>

<https://www.arcgis.com/apps/opsdashboard/index.html#/684c52c01a0c4dbda380d7b905ef0b46>

### Kern County:

Estimated Population 883,053

<https://kernpublichealth.com/2019-novel-coronavirus/>

[https://kernpublichealth.com/covid-19\\_dashboard/](https://kernpublichealth.com/covid-19_dashboard/)

### Los Angeles County:

Estimated Population 10,098,052

<http://publichealth.lacounty.gov/media/Coronavirus/>

### Orange County:

Estimated Population 3,164,182

[https://www.ochealthinfo.com/phs/about/epidasmt/epi/dip/prevention/novel\\_coronavirus](https://www.ochealthinfo.com/phs/about/epidasmt/epi/dip/prevention/novel_coronavirus)

### San Bernardino County:

Estimated Population 2,135,413

<http://wp.sbcounty.gov/dph/coronavirus/>

<https://sbcph.maps.arcgis.com/apps/opsdashboard/index.html#/44bb35c804c44c8281da6d82ee602dff>

Community Drive-Through Testing Events

<http://sbcovid19.com/community-drive-through-events/>

### San Diego County:

Estimated Population 3,302,833

[https://www.sandiegocounty.gov/content/sdc/hhsa/programs/phs/community\\_epidemiology/dc/2019-nCoV/status.html](https://www.sandiegocounty.gov/content/sdc/hhsa/programs/phs/community_epidemiology/dc/2019-nCoV/status.html)

### San Luis Obispo County:

Estimated Population 281,455

<https://www.emergencyslo.org/en/covid19.aspx>

<https://www.emergencyslo.org/en/positive-case-details.aspx>

### Santa Barbara County:

Estimated Population 443,738

<https://publichealthsb.org/>

<https://publichealthsb.org/dashboard/>

### Ventura County

Estimated Population 848,112

<https://www.vcemergency.com/>

# Education

## Riverside Community College District

- Coronavirus Aid, Relief, and Economic Security (CARES) Act
- Student applications for COVID-19 CARES funds for RCCD students are available at [https://www.rccd.edu/covid\\_funding\\_resources/Pages/index.aspx](https://www.rccd.edu/covid_funding_resources/Pages/index.aspx)
- Apply ASAP, funds are limited!
- CARES PPT - [https://www.rccd.edu/covid\\_funding\\_resources/Documents/CARES\\_ACT.pdf](https://www.rccd.edu/covid_funding_resources/Documents/CARES_ACT.pdf)

# Weather

**Excessive Heat Warning**, in effect 10 AM Tuesday through 9 PM Thursday.

- Temperatures will climb again Tuesday and Wednesday, with Wednesday expected to be the hottest day of the week for most locations
- Dangerous heat will affect our deserts, and heat risk may be heightened for inland valleys west of the mountains as well, particularly in the Inland Empire on Wednesday.
- Lower Deserts will likely see lingering dangerous heat through Thursday, before temperatures cool and bring an end to the prolonged, early-season heat wave.

**COVID-19 Weather Support**

**Issued:**

**1100 am April 27, 2020**

NATIONAL WEATHER SERVICE  
SAN DIEGO, CA

**IMPACT SCALE**

None Minor Moderate High Extreme

**Resources**

<https://www.weather.gov/spot/>  
<https://inws.ncep.noaa.gov>  
<https://www.wrh.noaa.gov/sgx/event/dss/table.php>

**(858) 675 - 8705**  
(24/7, Restricted)

**Weather.gov/SanDiego**

7-day forecast for Counties in far southwest CA						
Period April 27 - May 4 (24-hr)	Orange	SW San Bernardino	All Deserts	Western Riverside	San Diego	
Monday	Mild	Warm	Very Warm	Warm	Cooler	
Tuesday	Warm inland	Very Warm	Hot	Very Warm	Warm inland	
Wednesday	Warm inland	Very Warm	Hot	Very Warm	Warm inland	
Thursday	Cooler	Warm	Hot Breezy	Warm	Cooler	
Friday	Cooler	Cooler Windy passes	Warm Windy	Cooler Windy passes	Cooler	
Saturday	NONE	Windy passes	Windy Cooler	Windy passes	NONE	
Sunday	NONE	Breezy passes	Breezy	Breezy passes	NONE	
Monday	NONE	NONE	Warm	NONE	NONE	

**Forecast Discussion**

A weak disturbance expected today has deepened the marine layer and cooled the air mass so some cooling for all areas. Expect warming again inland for Tuesday and Wednesday as upper level ridge builds back directly over southern California for hot temperatures in the desert and warmer inland areas. **Tuesday and Wednesday hottest days.** The highest temperatures will reach **10 degrees above average for valleys and 10 to 16 for the deserts** (near record levels). Inland areas with lower to mid 90s for the Inland Empire and the High Desert and 101-107 in lower deserts. Cooling late next week returns temperatures to around average and windy passes and deserts on Friday and Saturday. A warming trend starts back up on Monday.