



Daily Situation Summary Monday, April 27, 2020 As of 10:00 AM

Always check with trusted sources for the latest accurate information about novel coronavirus.

- **World Health Organization**
<https://www.who.int/>
- **Centers for Disease Control and Prevention**
<https://www.cdc.gov/>
- **Food and Drug Administration**
<https://www.fda.gov/emergency-preparedness-and-response/counterterrorism-and-emerging-threats/coronavirus-disease-2019-covid-19>
- **California Department of Public Health**
<https://www.cdph.ca.gov/>
- **County Department/Public Health**
<https://www.rivcoph.org/>
- **Residents in most counties can call 2-1-1**

This can't be real? Fact-checking resources.

- Boom - <https://www.boomlive.in/>
- Snopes - <https://www.snopes.com/>
- FEMA - <https://www.fema.gov/coronavirus-rumor-control>
- WHO - <https://www.who.int/about/communications/cyber-security>

Need PPE? - I have not vetted these sources

- 1Point3Acres - <https://coronavirus.1point3acres.com/ppe>
- Biotechnology Innovation Organization (BIO).
The BIO Coronavirus Hub – https://hub.bio.org/landing-page/community-home?mkt_tok=eyJpIjoiWW1FeFpqYzJPRFJrWWpKaSIsInQiOiJaS1ZpSWE2czZpdFwvUETkbcSxUFZDK29MdzA2K3FMNTEyRDlocjJyMDJDN2FoRzR3RHYxU1o3QTY2QWczdmdvbGlpcCRHZzUTI EQ3ZUWklyZXFPmzdxQ0NFWU5EeFFjU0ZqWXBwT1wvQlZZVnk5IVTZPMldcL3NlbTJRXC96M042YWtOclAifQ%3D%3D
- FEMA PPE exchange- Operates like any other Adobe connect page
No log-in required-- <https://fema.connectsolutions.com/ppeexchange>

Quick Reference Sheet

Global Update:

Total cases: 2,858,635 (85,517 new)

Total deaths: 196,295 (5,955 new)

More detail on page 3

National Update:

Total cases: 928,619

Total deaths: 52,495

More detail on page 3

COVID-19 Whole-of-America Response

More detail on page 5

See Which States Are Reopening and Which Are Still Shut Down & When States should Relax Social Distancing and When

More detail on page 6

State California Update:

Total cases: 42,164

Total deaths: 1,710

More detail on page 9

Riverside County:

Total cases: 3,563

Total deaths: 118

More detail on page 10

Riverside County Food Assistance Map

locations providing food and meals during COVID-19 emergency in Riverside County

More detail on page 11

Education Updates

More detail on page 17

Weather

More detail on page 18

Updated link

Test dashboard, please provide any feedback

<https://bit.ly/2x53BY8>

****Extraordinary Assumptions: There are a lot of different data sources in this report not all of them match but aid to provide an overall picture of the current situation**

COVID-19 Data Source Comparison - https://covid-19.splunkforgood.com/covid_19_datasource_comparison

Global Update:

Total cases: 2,858,635 (85,517 new)
Total deaths: 196,295 (5,955 new)

[https://www.who.int/redirect-pages/page/novel-coronavirus-\(covid-19\)-situation-dashboard](https://www.who.int/redirect-pages/page/novel-coronavirus-(covid-19)-situation-dashboard)

National Update:

Cases of COVID-19 Reported in the US, by Source of Exposure

Total cases: 928,619
Total deaths: 52,495

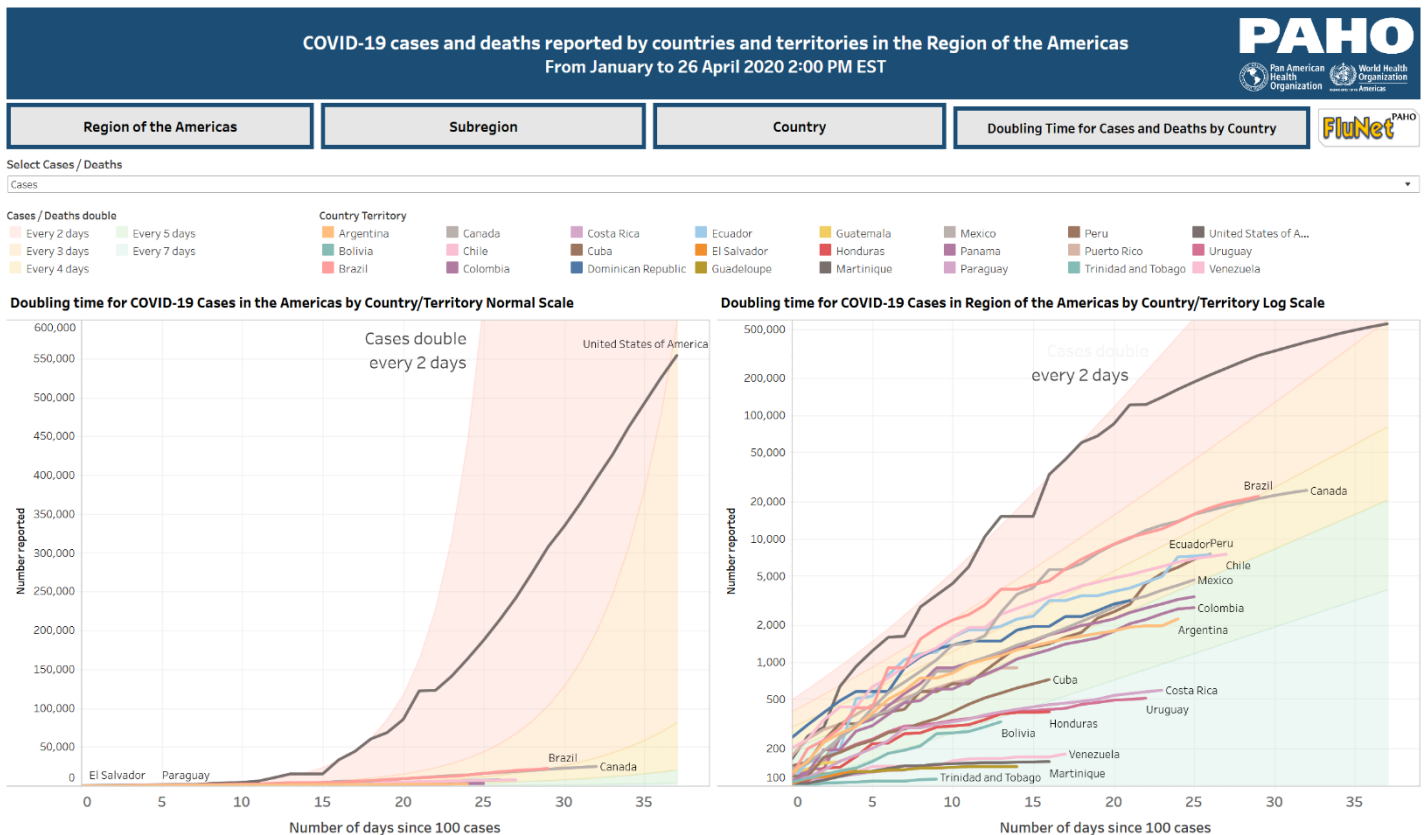
Numbers close out at 4 p.m. the day before reporting

<https://www.cdc.gov/coronavirus/2019-ncov/cases-updates/cases-in-us.html>

COVID-19 Situation in the Region of the Americas as of 26 April 2020 (14:00 EST)

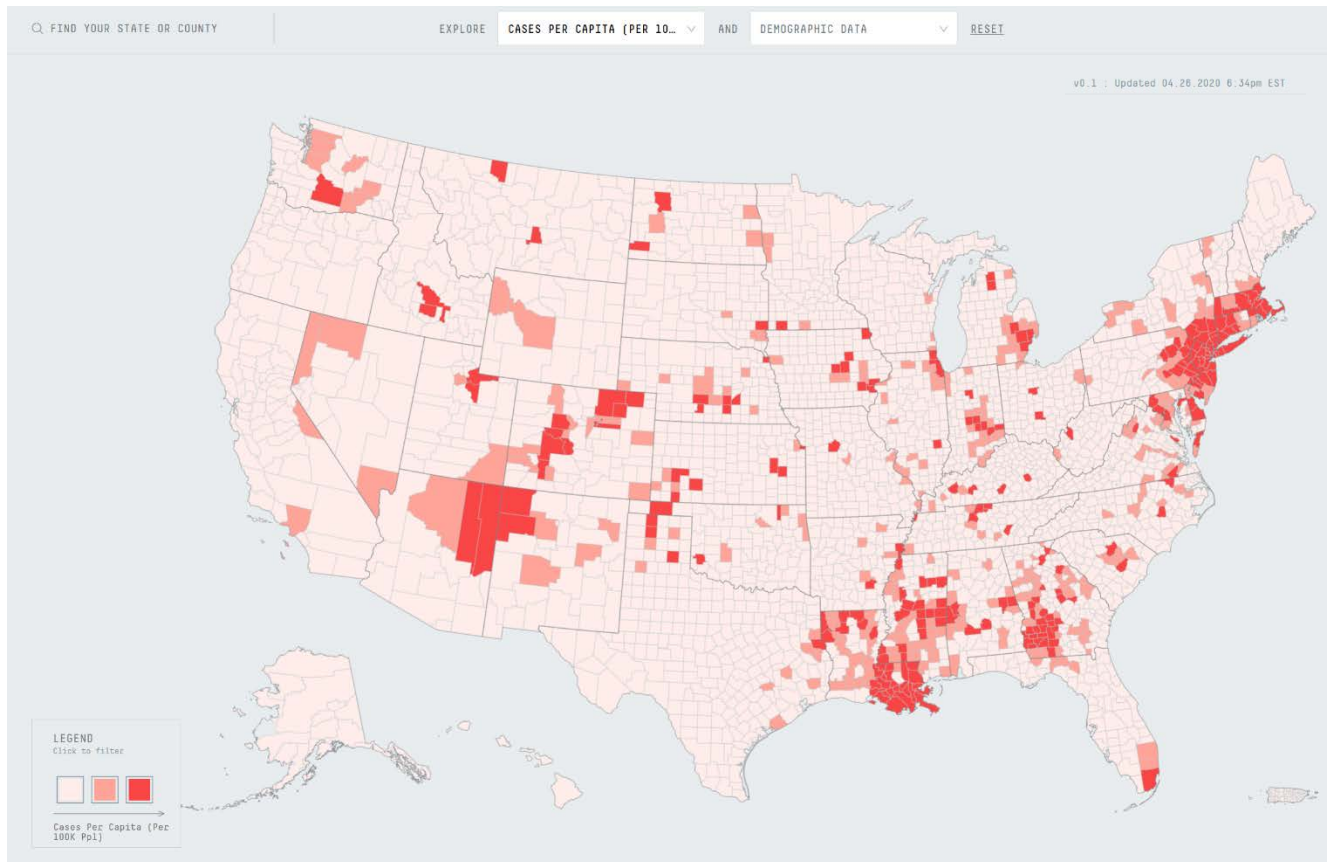
- An additional 45,676 cases and 2,648 deaths were reported in the past 24 hours, bringing the regional total to 1,140,536 cases including 64,892 deaths, a 4% relative increase in both total cases and deaths compared to the previous day. Decreases in case count and death toll during the weekends should be interpreted with caution due to reporting delays or no new reports being published by some countries/territories in the region.
- COVID-19 days in the Americas since the first confirmed case. Beginning 21 Jan 2020 it has been 97 Days.

<https://www.paho.org/en/topics/coronavirus-infections/coronavirus-disease-covid-19>



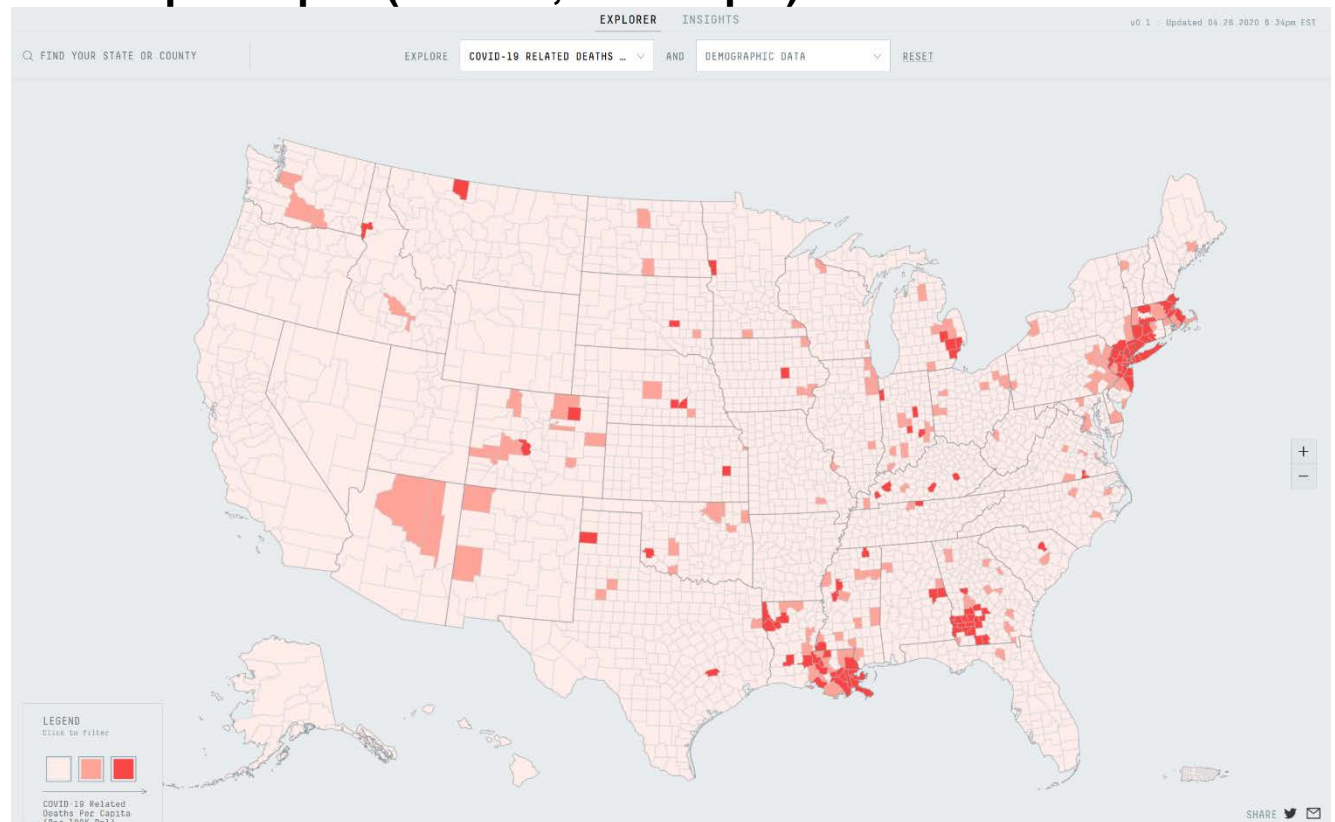
<https://ais.paho.org/phis/viz/COVID-19EpiDashboard.asp>

Cases per Capita (Per 100,000 People)



<https://covid19.topos.com/>

Deaths per Capita (Per 100,000 People)



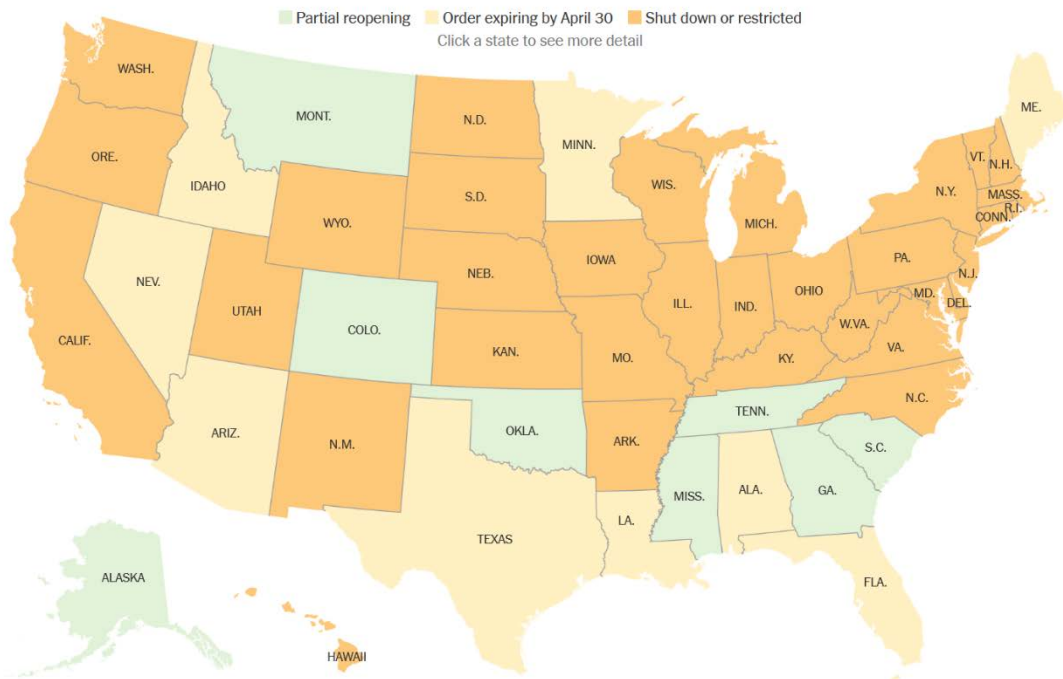
COVID-19 WHOLE-OF-AMERICA RESPONSE

FEMA, HHS, and our federal partners work with state, local, tribal and territorial governments to execute a whole-of-America response to COVID-19 pandemic and protect the health and safety of the American people. Even as FEMA is focused on responding to COVID-19, we are also preparing and maintaining readiness for other disasters to include spring flooding, severe weather and the upcoming hurricane season.

- Forty-two states, four territories and more than 37 tribes have issued stay-at-home orders.
- All 50 states, five territories, and Washington, D.C. have been approved for major disaster declarations to assist with additional needs identified.
- As of April 25, FEMA and HHS have provided or are currently shipping 10,603 ventilators from the Strategic National Stockpile and the Defense Department to states, tribes and territories.
- The federal government has approximately 10,920 total ventilators available: 9,838 in the Strategic National Stockpile; 1,082 from the Department of Defense.
- As of April 24, FEMA has obligated \$6.1 billion in support of COVID-19 efforts.
- FEMA currently has 3,127 employees supporting COVID-19 pandemic response out of a total 20,605 agency employees ready to respond to other emergencies should they occur.
- As of April 25, 81 agencies across 28 states, the District of Columbia, one tribe and one U.S. territory have sent 204 alerts with information on COVID-19 via the Wireless Emergency Alert system; 51 alerts to broadcast stations via the Emergency Alert System.
- To date, the President has approved 47 National Guard requests for federal support for the use of National Guard personnel in a Title 32 duty status.
 - Pursuant to this approval, the federal government will fund 100 percent of the cost share for T-32 National Guard orders through May 31.
 - More than 36,000 National Guard troops have activated in T-32 duty status and 1,984 troops have activated in State Active Duty status to help with testing and other response efforts.
- To date, CDC, state, and local public health labs and other laboratories have tested more than 5.1 million samples.
 - As of April 24, the federal Community Based Testing Sites have screened more than 125,859 individuals.
- The U.S. Public Health Service deployed more than 1,500 officers in support of nation-wide efforts to mitigate the virus' potential spread.
- The U.S. Army Corps of Engineers has awarded 32 contracts for the design and build of alternate care facilities in Alaska, Arizona, California, Colorado, District of Columbia, Florida, Illinois, Maryland, Michigan, Missouri, New Jersey, New Mexico, New York, Oregon, Tennessee, U.S. Virgin Islands, and Wisconsin.
 - As of April 25, 1,573 USACE personnel are activated to support the COVID-19 mission, with more than 15,000 personnel engaged in additional response efforts.
- FEMA continues to expedite movement of commercially pre-sourced and commercially procured critical supplies from the global market to medical distributors in various locations across the U.S. through Project Airbridge.

Which States Are Reopening and Which Are Still Shut Down

By Sarah Mervosh and Jasmine C. Lee Updated April 27, 2020

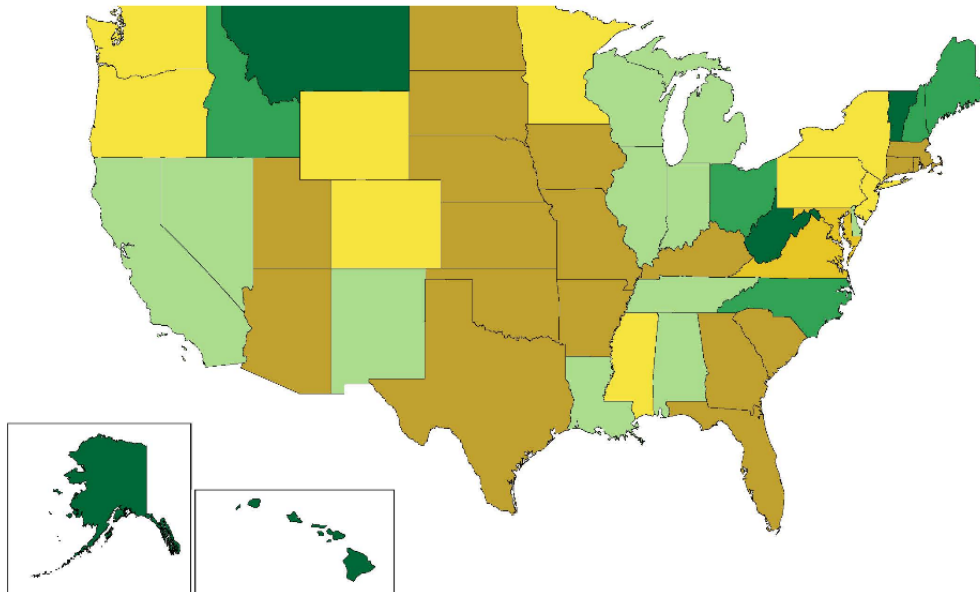


<https://www.nytimes.com/interactive/2020/us/states-reopen-map-coronavirus.html>

When States should Relax Social Distancing and When

Earliest date after which relaxing social distancing may be possible with containment strategies that include testing, contact tracing, isolation, and limiting gathering size

Threshold date: ■ May 04 to May 10 ■ May 11 to May 17 ■ May 18 to May 24 ■ May 25 to May 31 ■ June 01 to June 07 ■ June 08 or later



<http://www.healthdata.org/covid/updates>

News

CDC Adds 6 Symptoms To Its COVID-19 List

- The Centers for Disease Control and Prevention has added several new symptoms to its existing list of symptoms for COVID-19.
- Existing:
 - Fever
 - Cough
 - Shortness of breath or difficulty breathing
- New
 - Chills,
 - Repeated shaking with chills
 - Muscle pain,
 - Headache,
 - Sore throat
 - New loss of taste or smell.

<https://www.npr.org/sections/coronavirus-live-updates/2020/04/27/845321155/cdc-adds-6-symptoms-to-its-covid-19-list>

<https://www.cdc.gov/coronavirus/2019-ncov/symptoms-testing/symptoms.html>

Disney's theme parks are unlikely to open their gates again until 2021,

- Disney's largest and best-known parks may have to wait for coronavirus vaccine
- Social distancing, travel restrictions and recession make parks 'less profitable'
- Disney announced April it ceased paying 100,000 staff to save \$500m a month
- To make guests feel safer, Disney is considering the use of temperature checks

https://www.dailymail.co.uk/news/article-8248743/Disneys-theme-parks-unlikely-open-gates-2021-according-analysts.html?ito=facebook_share_fbiamiddle&fbclid=IwAR1aH69g34KCP1SDuSXM0xAFgODvvgPncHxO8Yu5ZzwcOboffbvhGfnlWKw

The Challenge of Tracking COVID-19's Stealthy Spread

- Several new studies indicate that containing coronavirus that causes COVID-19—will involve many complex challenges, not the least of which is figuring out ways to use testing technologies to our best advantage in the battle against this stealthy foe.

<https://directorsblog.nih.gov/2020/04/23/the-challenge-of-tracking-covid-19s-stealthy-spread/>

NIAID strategic plan details COVID-19 research priorities

- Scientific research to improve our understanding of the virus and how it causes disease, and to develop strategies to mitigate illness and death, is of paramount importance.
- A new strategic plan from the National Institute of Allergy and Infectious Diseases (NIAID), part of the National Institutes of Health, details the institute's plan for accelerating research to diagnose, prevent and treat COVID-19.

<https://www.nih.gov/news-events/news-releases/niaid-strategic-plan-details-covid-19-research-priorities>

Police Are Using Drones for Coronavirus Management

- Drones have arrived as a tool for local police departments looking to help control further outbreak of COVID-19 cases.
- According to multiple sources within the Elizabeth Police Department in New Jersey, officers see public crowds on a daily basis, whether on street corners, in play areas or in public streets.
- “The practical reasoning is that a drone can cover more ground and have a greater vantage point over officers on the ground,” according to an emailed statement from the department. “It also facilitates in assisting patrol in getting to hard to reach areas.

Officers can patrol remote areas without leaving their vehicle area. PSAs can be delivered in public places without the danger of officer contact.”

https://www.governing.com/now/Police-Are-Using-Drones-for-Coronavirus-Management.html?utm_term=READ%20MORE&utm_campaign=Absent%20Fed%20Help%2C%20State%20Budgets%20Will%20Be%20the%20Worst%20in%20Decades&utm_content=email&utm_source=Act-On+Software&utm_medium=email

Gov. Newsom Announces Plan for Restaurants to Deliver 3 Meals Daily to Seniors at No Charge

- The program that will pay local restaurants to deliver three nutritious meals every day of the week to at-risk seniors during the coronavirus epidemic.
- When announcing the program on Friday, Newsom said that 1.7 million of California's 5.7 million seniors live alone. He hopes the program will help ensure that high-risk seniors and other adults stay at home to avoid potentially contracting the virus.
- Additionally, Newsom intends for the program to help "provide essential economic stimulus to local businesses and workers struggling to stay afloat during the Covid-19 crisis." Restaurants can receive up to \$16 for breakfasts, \$17 for lunch and \$28 for dinners.
- The program will be financed through a combination of state funds, funds provided through the Federal Emergency Management Agency (FEMA) and funds from local governments to help repay restaurants for their meals.

https://www.newsweek.com/gov-newsom-announces-plan-restaurants-deliver-3-meals-daily-seniors-no-charge-1500174?fbclid=IwAR1m7hgzTgcyHOAECK55i5Q3Y3PTUTJIBe960_mlfXS6ymEA4oyOy4-pFs

<https://www.gov.ca.gov/2020/04/24/governor-newsom-announces-initiatives-to-support-older-californians-during-covid-19-pandemic/>

Governor Newsom Signs Executive Order on Actions in Response to COVID-19

- Addressed in the executive order include granting a 60-day extension for customers with Department of Motor Vehicles deadlines, including for recently expired drivers' licenses and identification cards, to reflect public compliance with the COVID-19 stay at home order. It also suspends late fees from being applied to expired vehicle registrations.
- Additionally, the order will allow certain posting, filing and notice requirements under the California Environmental Quality Act (CEQA) to be satisfied through electronic means to allow public access and involvement consistent with COVID-19 public health concerns.
- Finally, the executive order will temporarily allow retailers, particularly grocery stores, to provide bags to consumers without charge, and to pause redemption of beverage containers in-store to mitigate the spread of COVID-19. The executive order also temporarily suspends the requirement for recycling centers to hold a minimum number of hours of operation and directs the Department of Resources Recycling and Recovery (CalRecycle) to develop and issue operating guidelines.

<https://www.gov.ca.gov/2020/04/23/governor-newsom-signs-executive-order-on-actions-in-response-to-covid-19-2/>

Will students show up for college in fall 2020? Community colleges offer a hint. It isn't pretty.

<https://www.usatoday.com/story/news/education/2020/04/27/coronavirus-community-college-fall-2020-semester-online-reopen/3005585001/>

Low-Income Students Top Presidents' COVID-19 Worry List

- In mid-April, Inside Higher Ed served 187 two- and four-year college presidents published today

<https://www.insidehighered.com/news/survey/presidents-biggest-covid-19-worries-low-income-students-and-colleges-financial-strain>

State California Update:

COVID-19 in California by the Numbers

Total cases: 42,164

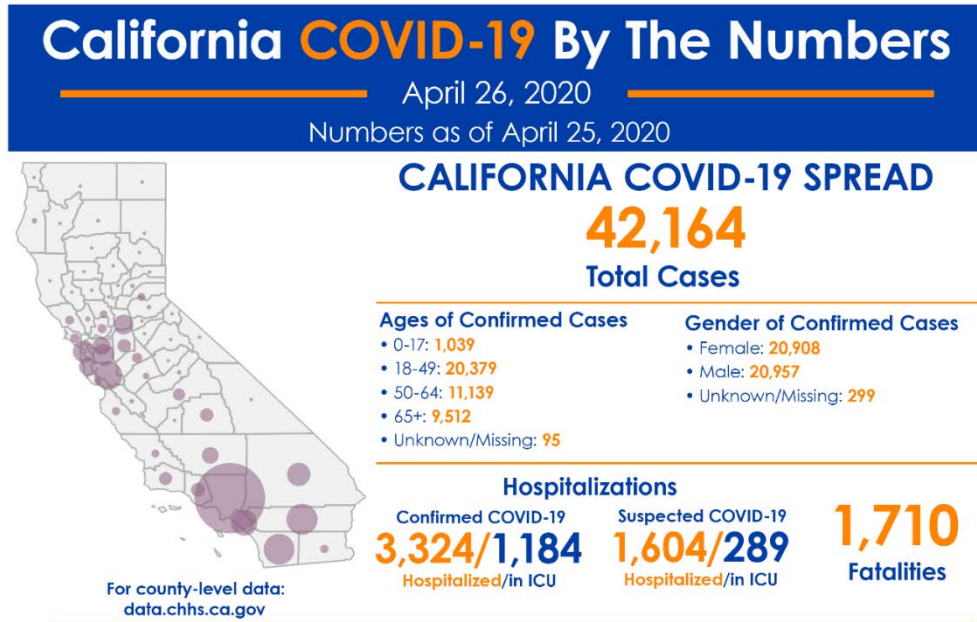
Total deaths: 1,710

Estimated Population 39,148,760

Note: The following numbers reflect information received from local health jurisdictions as of 2 p.m. PDT. More current numbers may be available from local health jurisdictions.

<https://www.cdph.ca.gov/Programs/CID/DCDC/Pages/Immunization/nCoV2019.aspx>

<https://covid19.ca.gov/>



Stay Home. Save Lives.

covid19.ca.gov



Testing Data

State	Positive	Negative	Pending	Total Tests (Population)
CA i	42,164 8%	483,920	0	526,084 (39,512,223)

Test Locations:

San Francisco Palo Alto Hayward San Jose San Mateo Lake Elsinore Sacramento Martinez

San Fernando Valley L.A. city L.A. city L.A. city L.A. city L.A. city Los Angeles Los Angeles Los Angeles L.A. city

L.A. city L.A. city L.A. city Fremont El Centro Calexico San Joaquin

<https://coronavirus.1point3acres.com/en/test>

Local SOCAL County Updates:

Riverside County:

COVID-19 by the Numbers

Total cases: **3,563**

Total deaths: **118**

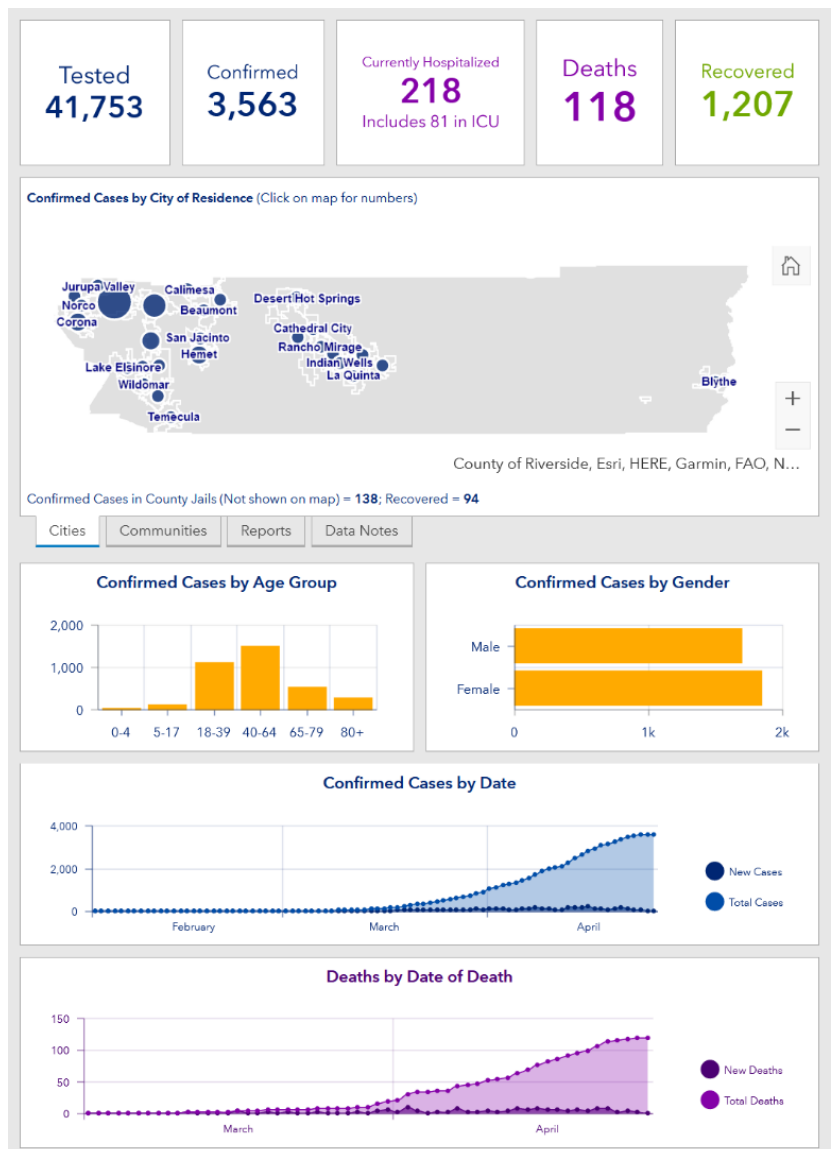
Estimated Population: 2,424,790

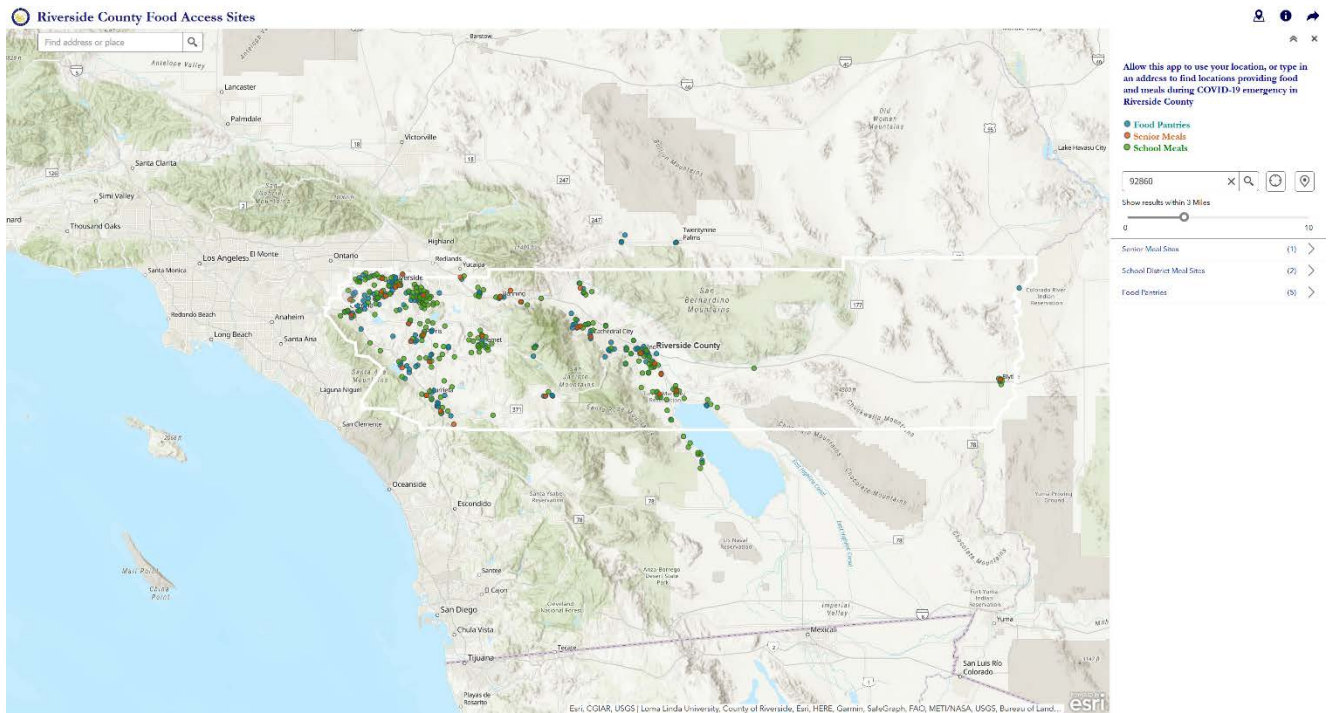
<https://www.rivcoph.org/>

<https://www.rivcoph.org/coronavirus>

RUHS Public Health:

- Coachella Valley seniors encouraged to run air conditioning during heat wave [English](#) / [Spanish](#) - April 24, 2020
- County receives CARES funding to support coronavirus response [English](#) / [Spanish](#) - April 24, 2020
- [Updated Essential Services FAQs](#) — April 24, 2020
- Watch the Daily Updates <https://vimeo.com/showcase/7000995>





Riverside County Food Assistance Map - locations providing food and meals during COVID-19 emergency in Riverside County

<https://countyofriverside.maps.arcgis.com/apps/webappviewer/index.html?id=52ca2b425fd14b2387f3676bf6db294e&extent=-13100249.8739%2C3944965.339%2C-12940037.8626%2C4040817.3725%2C102100>

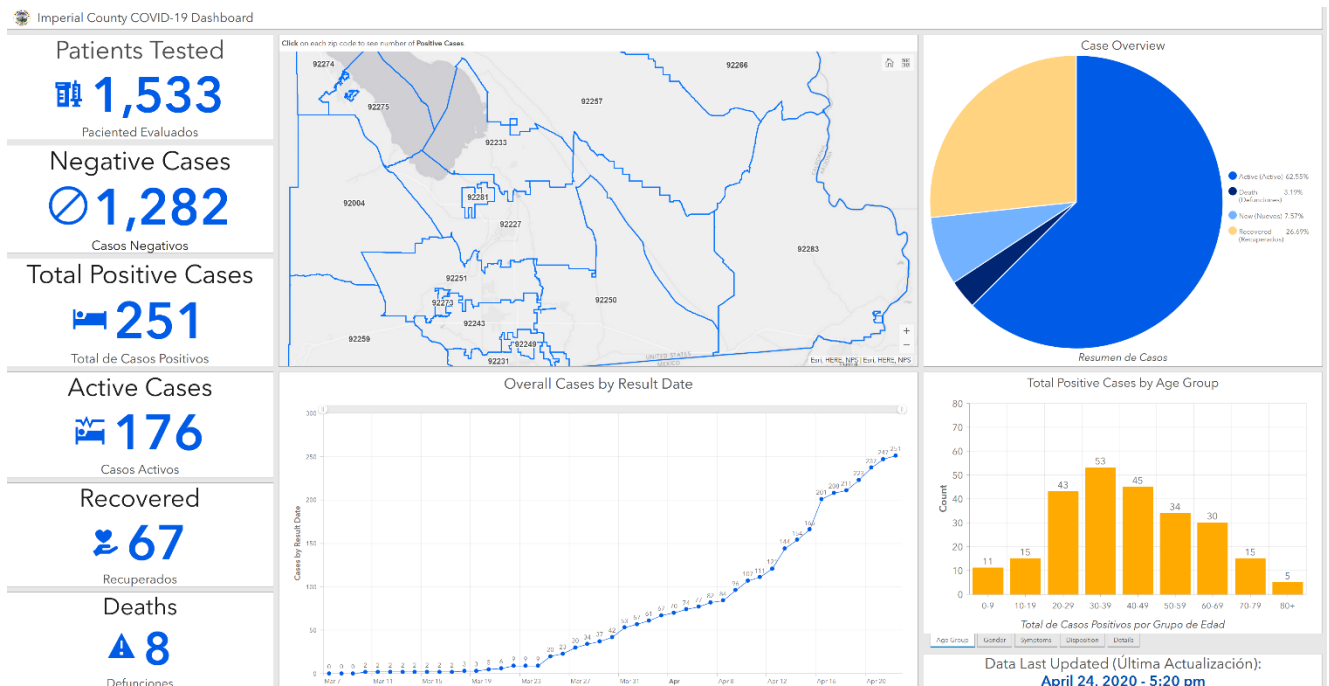
Other Local County Links

Imperial County:

Estimated Population 180,216

<http://www.icphd.org/health-information-and-resources/healthy-facts/covid-19>

<https://www.arcgis.com/apps/opstdashboard/index.html#/684c52c01a0c4dbda380d7b905ef0b46>

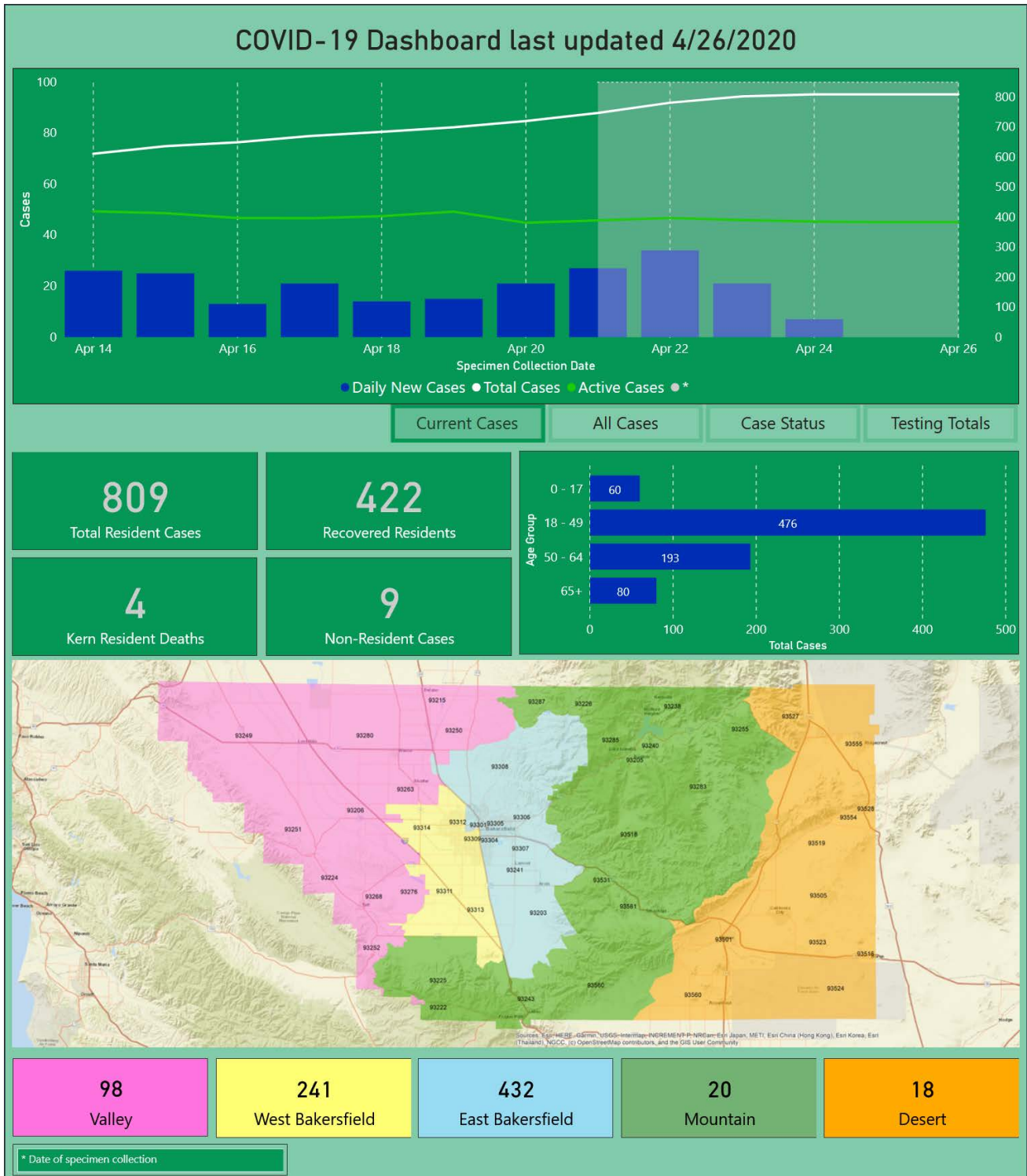


Kern County:

Estimated Population **883,053**

<https://kernpublichealth.com/2019-novel-coronavirus/>

https://kernpublichealth.com/covid-19_dashboard/



Los Angeles County:

Estimated Population 10,098,052

<http://publichealth.lacounty.gov/media/Coronavirus/>

COVID-19 in Los Angeles County*



As of 8pm 4/25

*including cases reported by Long Beach and Pasadena Health Departments

** includes deaths

Locations	Total Cases
Laboratory Confirmed Cases (LCC)	19528
- Los Angeles County (excl. LB and Pas)	18666
- Long Beach	563
- Pasadena	299
Deaths	913
- Los Angeles County (excl. LB and Pas)	855
- Long Beach	29
- Pasadena	29

Orange County:

Estimated Population 3,164,182

https://www.ochealthinfo.com/phs/about/epidasmt/epi/dip/prevention/novel_coronavirus

County of Orange, CA COVID-19 Case Count

Posted Date: 4/26/2020



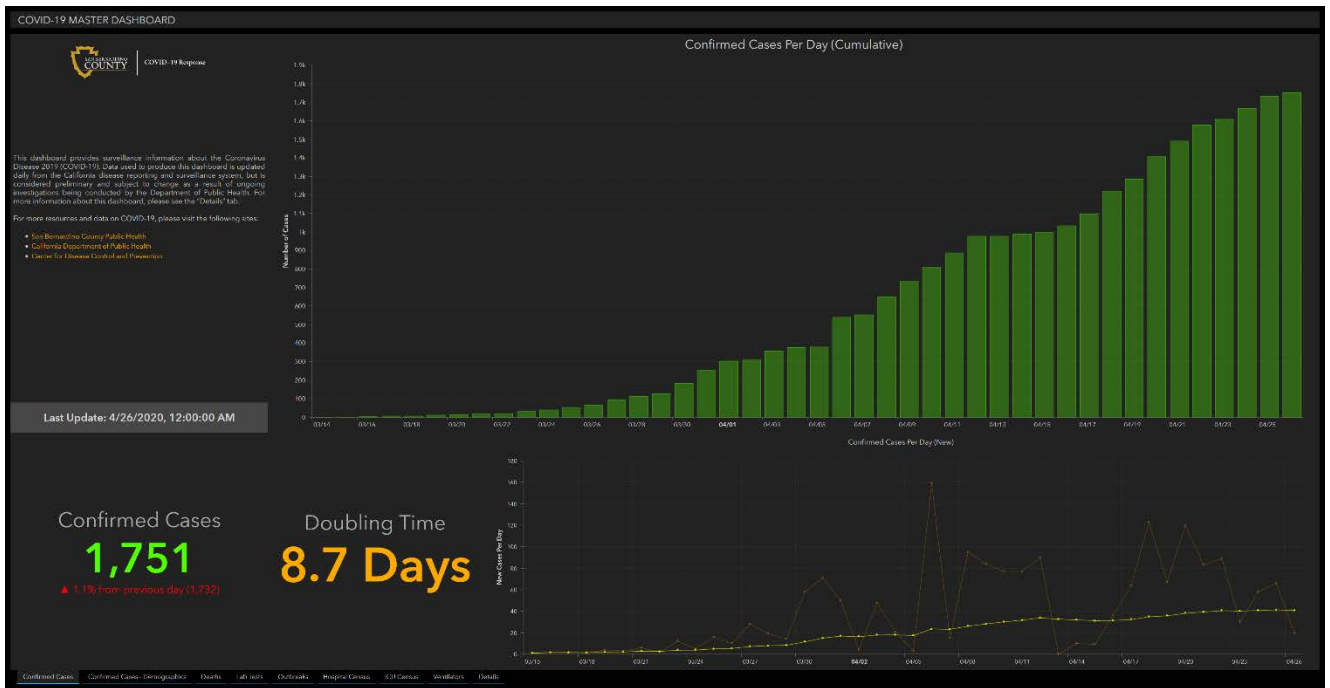
Numbers fluctuate day-by-day due to changes in patient condition(s). Data are gathered daily at one point in time.

San Bernardino County:

Estimated Population 2,135,413

<http://wp.sbcounty.gov/dph/coronavirus/>

<https://sbcph.maps.arcgis.com/apps/opsdashboard/index.html#/44bb35c804c44c8281da6d82ee602dff>



Community Drive-Through Testing Events

<http://sbcovid19.com/community-drive-through-events/>

Colton – Arrowhead Regional Medical Center (ARMC)

400 N. Pepper Ave., Colton

Monday through Friday, 8 a.m. to 4 p.m.

Appointment only. To make an appointment, please call the ARMC Referral Center at 1-855-422-8029.

Rancho Cucamonga – Rancho Cucamonga Quakes Stadium (LoanMart Field)

8408 Rochester Ave., Rancho Cucamonga (Directions/Direcciones)

Monday, April 27 - 10 a.m. to 2 p.m. Appointment only. Appointments are no longer available.

San Bernardino – Arroyo Valley High School

1881 W. Base Line St., San Bernardino (entrance is on University Parkway off Baseline Street)

Tuesday, April 28 - 10 a.m. to 2 p.m. Appointment only.

Redlands – Citrus Valley High School

800 W. Pioneer Ave., Redlands

Wednesday, April 29 - 10 a.m. to 2 p.m. Appointment only.

Apple Valley – Civic Center Park

14999 Dale Evans, Pkwy., Apple Valley

Thursday, April 30 - 10 a.m. to 2 p.m.

Appointment only. Appointment registration will open Monday, April 27 at 10 a.m.

Hesperia – Hesperia Civic Plaza Park

15833 Smoke Tree St., Hesperia

Friday, May 1 - 10 a.m. to 2 p.m. Appointment only. Details will be announced.

Ontario – Toyota Arena
4000 Ontario Center, Ontario

Monday, May 4 - 10 a.m. to 2 p.m. Appointment only. Details will be announced.

Barstow – Barstow Sports Park
2800 Mayor Katy Pkwy., Barstow

Wednesday, May 6 - 10 a.m. to 2 p.m. Appointment only. Details will be announced.

San Bernardino – SAC Health System
IEHP Members Only

250 S. G St., San Bernardino

Monday through Friday - 9 a.m. to 4 p.m.

Appointment only. IEHP members can call (909) 771-2911 to speak to a provider to determine testing needs.

San Diego County:

Estimated Population 3,302,833

https://www.sandiegocounty.gov/content/sdc/hhsa/programs/phs/community_epidemiology/dc/2019-nCoV/status.html

****This table format was revised Sunday, March 15, 2020 to provide additional data about local cases. ****

It will be updated daily around 4:00 p.m.

Positive Cases in San Diego County Since February 14, 2020	
Coronavirus Disease 2019 (COVID-19)	
<i>Table updated April 26, 2020, with data through April 25, 2020.</i>	
COVID-19 Case Summary	San Diego County Residents
Total Positives	3,043
Age Groups	
0-9 years	23
10-19 years	57
20-29 years	449
30-39 years	566
40-49 years	528
50-59 years	598
60-69 years	393
70-79 years	231
80+ years	195
Age Unknown	3
Gender	
Female	1,489
Male	1,551
Unknown	3
Hospitalizations	696
Intensive Care	227
Deaths	111

San Luis Obispo County:


Estimated Population **281,455**

<https://www.emergencyslo.org/en/covid19.aspx>

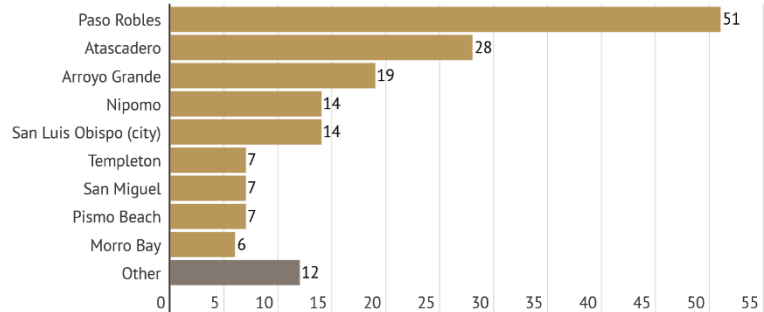
<https://www.emergencyslo.org/en/positive-case-details.aspx>

Current Situation

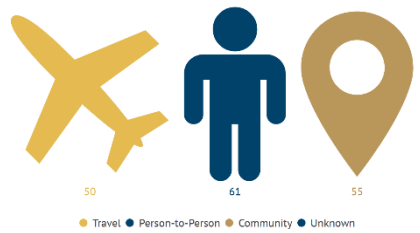
As of 4/26/20 at 12:30 pm

-  **166**
Confirmed cases
-  **36**
Home
-  **126**
Recovered
-  **3**
Hospitalized (1 in ICU)
-  **1**
Death

Cases by City or Town



Mode of Transmission



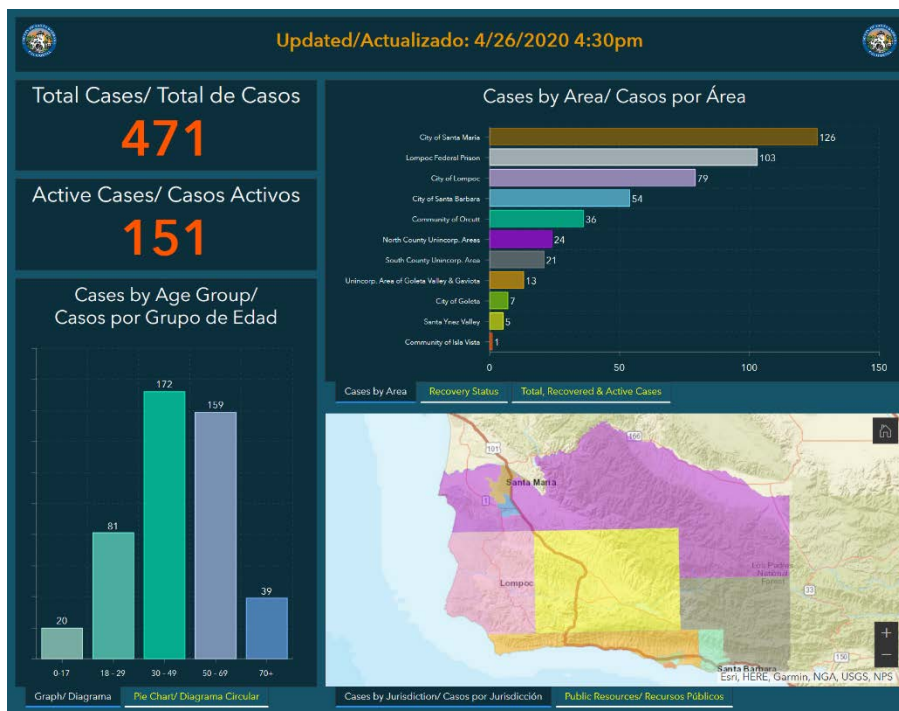
Definitions:
 Travel = Recent travel outside the county
 Person-to-Person Spread = Contact to a known case
 Community Acquired = Not travel related or contact to a known case
 Unknown = Investigation still underway

Santa Barbara County:

Estimated Population **443,738**

<https://publichealthsb.org/>

<https://publichealthsb.org/dashboard/>



Ventura County

Estimated Population

848,112

<https://www.vcemergency.com/>

Ventura County Coronavirus Information Updated April 24, 2020 at 5:47 P.M.						
Summary Data	#	Confirmed Cases	#	City/Unincorporated Areas	#	
New Cases	1	Travel Related	19	Camarillo	44	
TOTAL CASES	497	Person-to-person acquired	144	Fillmore	11	
Recovered Cases	271	Community acquired	255	Moorpark	27	
Current hospitalizations	29	Under investigation	79	Ojai	5	
Current ICU	7	Total	497	Oxnard	114	
Active Cases Under Quarantine	209			Port Hueneme	11	
DEATHS	17			Santa Paula	12	
People Tested	9,161	Ages & Sex of Confirmed Cases			Simi Valley	130
		Ages	Female	Male	Thousand Oaks	89
		Age 0-17	7	5	Ventura	35
		Age 18-24	28	13	Oak Park	12
		Age 25-44	76	58	Somis	2
		Age 45-64	93	104	Piru	3
		Age 65+	51	62	Oak View	2
		Unknown	0	0		
		Total	255	242	Total	497

For more detailed information click here to view the Ventura County Office of Emergency Services COVID-19 Dashboard

Education Updates

Mendocino College Career Education Programs provide Adventist Health with 3D printed face shields and PPE masks

- On Wednesday, Mendocino College Career Education instructors provided Adventist Health with 250 3D printed face shields to use during the COVID-19 pandemic.
- In March, the college also delivered 240 N95 masks, and another 5,000 – including ear loop surgical, face shield, and N95 – were given directly from the Mendocino College Nursing Department.


https://www.lakeconews.com/index.php/news/65193-mendocino-college-career-education-programs-provide-adventist-health-with-3d-printed-face-shields-and-ppe-masks?_cf_chl_jschl_tk__=e8028b47469ae284c7237b2b12661c4a9bf04a1d-1588002574-0-ATH3wuYrZ-tiAZml2nxlpS5rsmZmTT2aOoh32pAZyOc8PClx3j42g1enannr9XKJfQxw42NvHkLbGhCIUz7cQJIK6hDZSdAhFbRTbbwQef8ZFrJT5srNe5X4uN9cVGKtL65x-dtcpWkqxZpgGTL86OMbF43wwW_bv8kBYUpPleqqgT9VxpP63pW7Wc5bSVZtrhpTWcrEK9ex8Z1MkjPOFcR00ttKYDeyZbx9FpAuo1C1Oloo_VzBMSd2N29Uq4F3_UUnc8Oq5LytiWpNb5o36tIALU7bjTLHYnPuZrFfD7TTWgQ-LwloRKkuSz5a9pqwlGP1zpAKuyT9AOElpw8T8SBB29H8V4gyGfkNU67Hxm5l8eRI0e2k2HoFrYQiQeGSQnTusbxwYnzdUntbwH4nL8AYEeVu2n4rn_nwpODOnVm430h2dWhhOWuXIA3jYqFig

Weather


COVID-19 Weather Support

Issued:

1100 am April 26, 2020



NATIONAL
WEATHER SERVICE
SAN DIEGO, CA




IMPACT SCALE

None Minor Moderate High Extreme

Resources

<https://www.weather.gov/spot/>
<https://inws.ncep.noaa.gov>
<https://www.wrh.noaa.gov/sgx/event/dss/table.php>

(858) 675 - 8705
(24/7, Restricted) 

Weather.gov/SanDiego

7-day forecast for Counties in far southwest CA

Period April 26 - May 3 (24-hr)	Orange	SW San Bernardino	All Deserts	Western Riverside	San Diego
Sunday	Cooler	Warm	Hot	Warm	Warm inland
Monday	Mild	Warm	Very Warm	Warm	Cooler
Tuesday	Warm inland	Very Warm	Hot	Very Warm	Warm inland
Wednesday	Warm inland	Very Warm	Hot	Very Warm	Warm inland
Thursday	Cooler	Warm	Hot Breezy	Warm	Cooler
Friday	Cooler	Cooler Windy passes	Warm Windy	Cooler Windy passes	Cooler
Saturday	NONE	Windy passes	Windy Cooler	Windy passes	NONE
Sunday	NONE	NONE	Breezy	NONE	NONE

Forecast Discussion

Slight cooling yesterday from marine fog but little change today for coast and valleys, and then slight cooling for deserts on Monday. Expect warming again inland for Tuesday and Wednesday as upper level ridge builds back over southern California for hot temperatures in the desert. A steady hot period for deserts with hottest days on Sunday, and again Tuesday and Wednesday as a very warm air mass builds back over Southern California. The highest temperatures will reach 10 degrees above average for valleys and 10 to 16 for the deserts (near record levels). Inland areas with lower to mid 90s for the Inland Empire and the High Desert and 101-107 in lower deserts. Cooling late next week returns temperatures to average and windy passes and deserts.