



Daily Situation Summary Friday, April 24, 2020 As of 10:00 AM

Always check with trusted sources for the latest accurate information about novel coronavirus.

- **World Health Organization**
<https://www.who.int/>
- **Centers for Disease Control and Prevention**
<https://www.cdc.gov/>
- **Food and Drug Administration**
<https://www.fda.gov/emergency-preparedness-and-response/counterterrorism-and-emerging-threats/coronavirus-disease-2019-covid-19>
- **California Department of Public Health**
<https://www.cdph.ca.gov/>
- **County Department/Public Health**
<https://www.rivcoph.org/>
- **Residents in most counties can call 2-1-1**

This can't be real? Fact-checking resources.

- Boom - <https://www.boomlive.in/>
- Snopes - <https://www.snopes.com/>
- FEMA - <https://www.fema.gov/coronavirus-rumor-control>
- WHO - <https://www.who.int/about/communications/cyber-security>

Need PPE? - I have not vetted these sources

- 1Point3Acres - <https://coronavirus.1point3acres.com/ppe>
- Biotechnology Innovation Organization (BIO).
The BIO Coronavirus Hub – https://hub.bio.org/landing-page/community-home?mkt_tok=eyJpIjoiWW1FeFpqYzJPRFJrWWpKaSIsInQiOiJaS1ZpSWE2czZpdFwvUETkbcSxUFZDK29MdzA2K3FMNTEyRDlocjJyMDJDN2FoRzR3RHYxU1o3QTY2QWczdmdvbGlpcCRHZzUTI EQ3ZUWklyZXFPmzdxQ0NFWU5EeFFjU0ZqWXBwT1wvQlZZVnk5IVTZPMldcL3NlBTJRXC96M042YWtOclAifQ%3D%3D
- FEMA PPE exchange- Operates like any other Adobe connect page
No log-in required-- <https://fema.connectsolutions.com/ppeexchange>

Quick Reference Sheet

Global Update:

Total cases: 2,626,321 (73,911 new)

Total deaths: 181,938 (6,675 new)

More detail on page 3

National Update:

Total cases: 828,441

Total deaths: 46,379

More detail on page 3

State California Update:

Total cases: 37,369

Total deaths: 1,469

More detail on page 5

Riverside County:

Total cases: 3,218

Total deaths: 100

More detail on page 6

Riverside County Food Assistance Map - locations providing food and meals during COVID-19 emergency in Riverside County

More detail on page 6 & 7

****Extraordinary Assumptions: There are a lot of different data sources in this report not all of them match but aid to provide an overall picture of the current situation**
COVID-19 Data Source Comparison - https://covid-19.splunkforgood.com/covid_19_datasource_comparison

Global Update:

Total cases: 2,626,321 (73,911 new)

Total deaths: 181,938 (6,675 new)

[https://www.who.int/redirect-pages/page/novel-coronavirus-\(covid-19\)-situation-dashboard](https://www.who.int/redirect-pages/page/novel-coronavirus-(covid-19)-situation-dashboard)

National Update:

Cases of COVID-19 Reported in the US, by Source of Exposure

Total cases: 828,441

Total deaths: 46,379

Numbers close out at 4 p.m. the day before reporting

<https://www.cdc.gov/coronavirus/2019-ncov/cases-updates/cases-in-us.html>

COVID-19 Situation in the Region of the Americas as of 23 April 2020 (14:00 EST)

- In the Region of the Americas, an additional 38,110 cases and 3,020 deaths were reported in the past 24 hours – representing a 4% (cases) and 6% (deaths) relative increase compared to the previous day. Majority of the new cases (29,127) deaths (2,390) continue to be reported from the United States of America, representing 83% of all new cases and 84% of all new deaths in the region.

<https://www.paho.org/en/topics/coronavirus-infections/coronavirus-disease-covid-19>

News

Born Into A Pandemic: Virus Complicates Births For Moms And Babies

- Can babies be infected if the mother is infected at birth? The answer is yes, not commonly, but yes,” said Dr. Karen Puopolo, an associate professor of pediatrics at the University of Pennsylvania School of Medicine and co-author of the American Academy of Pediatrics guidelines on COVID-19 and newborns.
- It’s not clear how many pregnant women have been infected with COVID-19 across the U.S. They accounted for just 2% of cases tallied in one early report. With more than 830,000 confirmed infections in the U.S. as of Wednesday afternoon, that’s still many thousands of expectant women potentially affected by the deadly respiratory virus.

<https://khn.org/news/born-into-a-pandemic-virus-complicates-births-for-moms-and-babies/>

Seniors With COVID-19 Show Unusual Symptoms, Doctors Say

- COVID-19 is typically signaled by three symptoms: a fever, an insistent cough and shortness of breath. But older adults — the age group most at risk of severe complications or death from this condition — may have none of these characteristics.
- Instead, seniors may seem “off” — not acting like themselves — early on after being infected by the coronavirus. They may sleep more than usual or stop eating. They may seem unusually apathetic or confused, losing orientation to their surroundings. They may become dizzy and fall. Sometimes, seniors stop speaking or simply collapse.

<https://khn.org/news/seniors-with-covid-19-show-unusual-symptoms-doctors-say/>

Anti-Vaccine Activists Latch Onto Coronavirus To Bolster Their Movement

- While most of the world hungers for a vaccine to put an end to the death and economic destruction wrought by COVID-19, some anti-vaccine groups are joining with anti-lockdown protesters to challenge restrictions aimed at protecting public health.
- A group calling itself the Freedom Angels, whose members last year stood on chairs and chanted at public hearings on the California vaccine bill, say governors are abusing their power by shutting down gun shops and other businesses.
<https://khn.org/news/anti-vaccine-activists-latch-onto-coronavirus-to-bolster-their-movement/>
<https://www.sacbee.com/news/politics-government/capitol-alert/article234564137.html>

OSHA Probing Health Worker Deaths But Urges Inspectors To Spare The Penalties

- The Occupational Safety and Health Administration has in recent weeks launched investigations into deaths of workers at 34 health care employers across the U.S., federal records show, but former agency officials warn that the agency has already signaled it will only cite and fine the most flagrant violators.
- “It’s a worker safety crisis of monstrous proportions and OSHA is nowhere to be found,” said David Michaels, an epidemiologist and George Washington University professor who was assistant secretary of Labor and ran OSHA from 2009 to 2017.
- Last week, the Centers for Disease Control and Prevention reported that more than 9,200 health workers had been infected with the coronavirus, a number the agency concedes is a vast undercount. The estimate was based on a set of lab-generated reports in which only 16% included the patient’s profession. The agency said the true number is probably closer to 11% of all known cases.
<https://khn.org/news/osha-probing-health-worker-deaths-but-urges-inspectors-to-spare-the-penalties/>

House passes COVID-19 relief package to replenish PPP loan funding

- The bill lingered in the Senate for two weeks of debates, with Republicans seeking to pass a less comprehensive version of the legislation and Democrats working to weave other funding into the package. In the end, the interim legislation will allocate \$310 billion to replenish the SBA’s Paycheck Protection Program (PPP), \$75 billion for hospitals and \$25 billion for COVID-19 testing. The bill also includes additional funds for the Economic Injury Disaster Loan (EIDL) program.
<https://techcrunch.com/2020/04/23/ppp-house-interim-bill-covid-relief/>

Facebook pulls ‘pseudoscience’ from its list of targeted ad categories

- Using Ad Manager, advertisers were able to serve ads to some 78 million people “who have expressed an interest in pseudoscience.” Following an investigation by The Markup that found the site buying ads to target that category, Facebook says it’s done with the pseudoscience tag.
- In a statement to TechCrunch, the company reconfirmed the move. “This interest category of advertising should have been removed in a previous review and we’ve removed it,” Director of Product Management Rob Leathern said. There was never a great time to run junk science ads, of course, but the issue has come to a head in recent weeks and months, as COVID-19 has become a massive hotbed for conspiracy and dangerous cures.
<https://techcrunch.com/2020/04/23/facebook-pulls-pseudoscience-from-its-list-of-targeted-ad-categories/>

State California Update:

COVID-19 in California by the Numbers

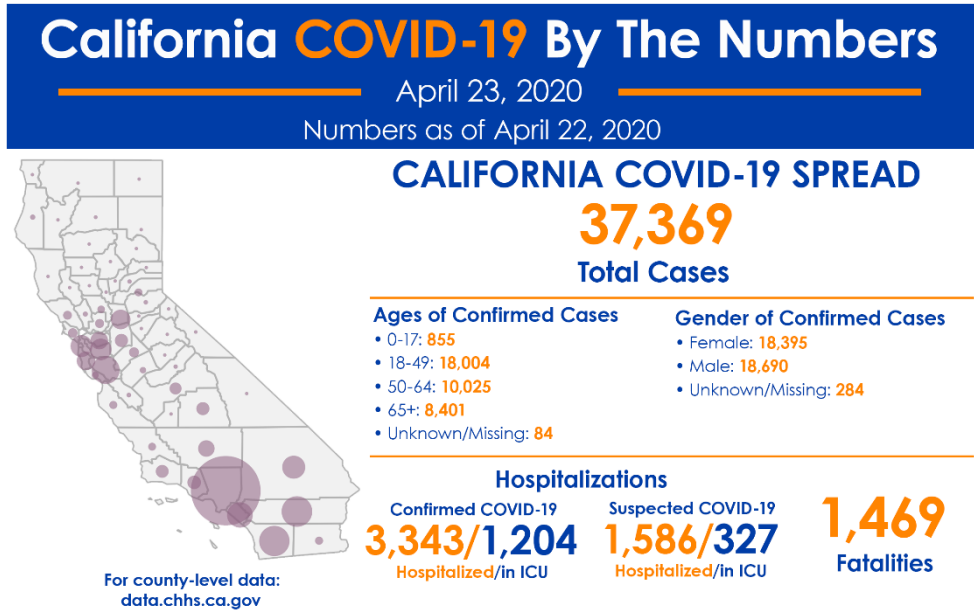
Total cases: 37,369

Total deaths: 1,469

Estimated Population 39,148,760

Note: The following numbers reflect information received from local health jurisdictions as of 2 p.m. PDT. More current numbers may be available from local health jurisdictions.

<https://www.cdph.ca.gov/Programs/CID/DCDC/Pages/Immunization/nCoV2019.aspx>



Stay Home. Save Lives.

covid19.ca.gov



Testing Data

State	Positive	Negative	Pending	Total Tests (Population)
CA	37,369 7.8%	444,728	0	482,097 (39,512,223)

Test Locations:

[San Francisco](#)
[Palo Alto](#)
[Hayward](#)
[San Jose](#)
[San Mateo](#)
[Lake Elsinore](#)
[Sacramento](#)
[Martinez](#)

[San Fernando Valley](#)
[L.A. city](#)
[L.A. city](#)
[L.A. city](#)
[L.A. city](#)
[L.A. city](#)
[L.A. city](#)
[Los Angeles](#)
[Los Angeles](#)
[Los Angeles](#)
[L.A. city](#)

[L.A. city](#)
[L.A. city](#)
[L.A. city](#)
[Fremont](#)
[El Centro](#)
[Calexico](#)
[San Joaquin](#)

<https://coronavirus.1point3acres.com/en/test>

Local SOCAL County Updates:

Riverside County:

COVID-19 by the Numbers

Total cases: **3,218**

Total deaths: **100**

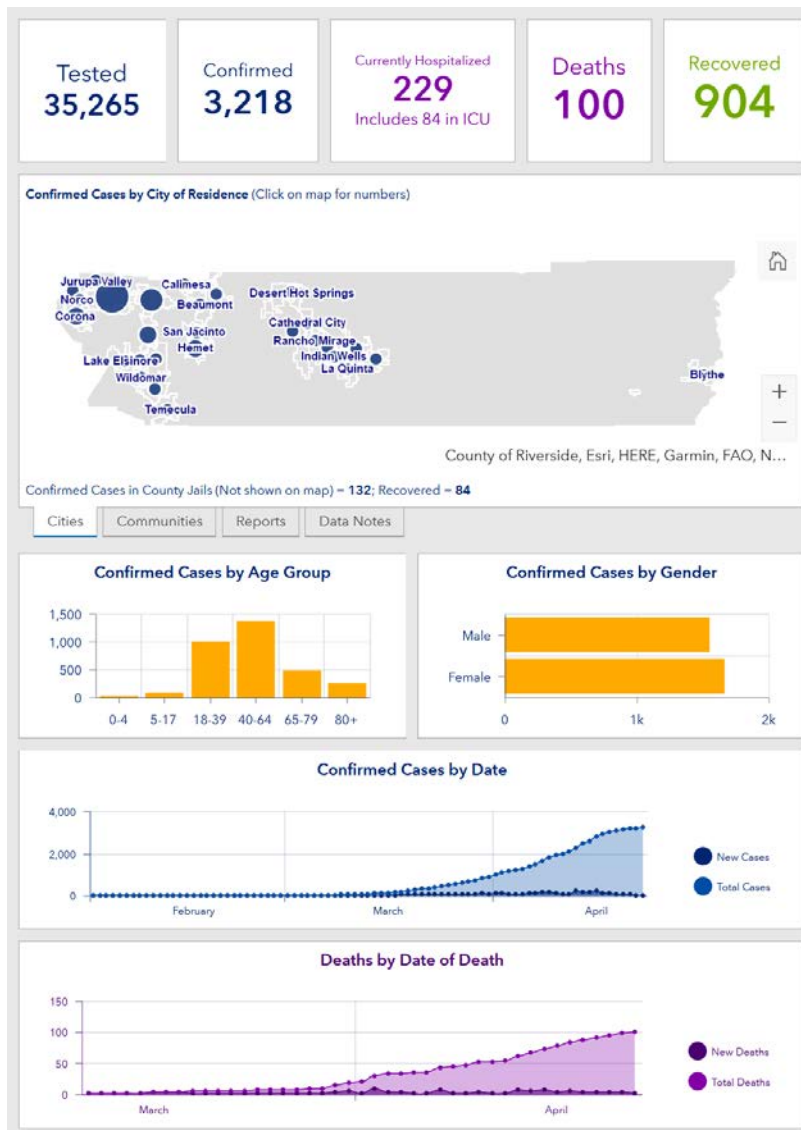
Estimated Population 2,424,790

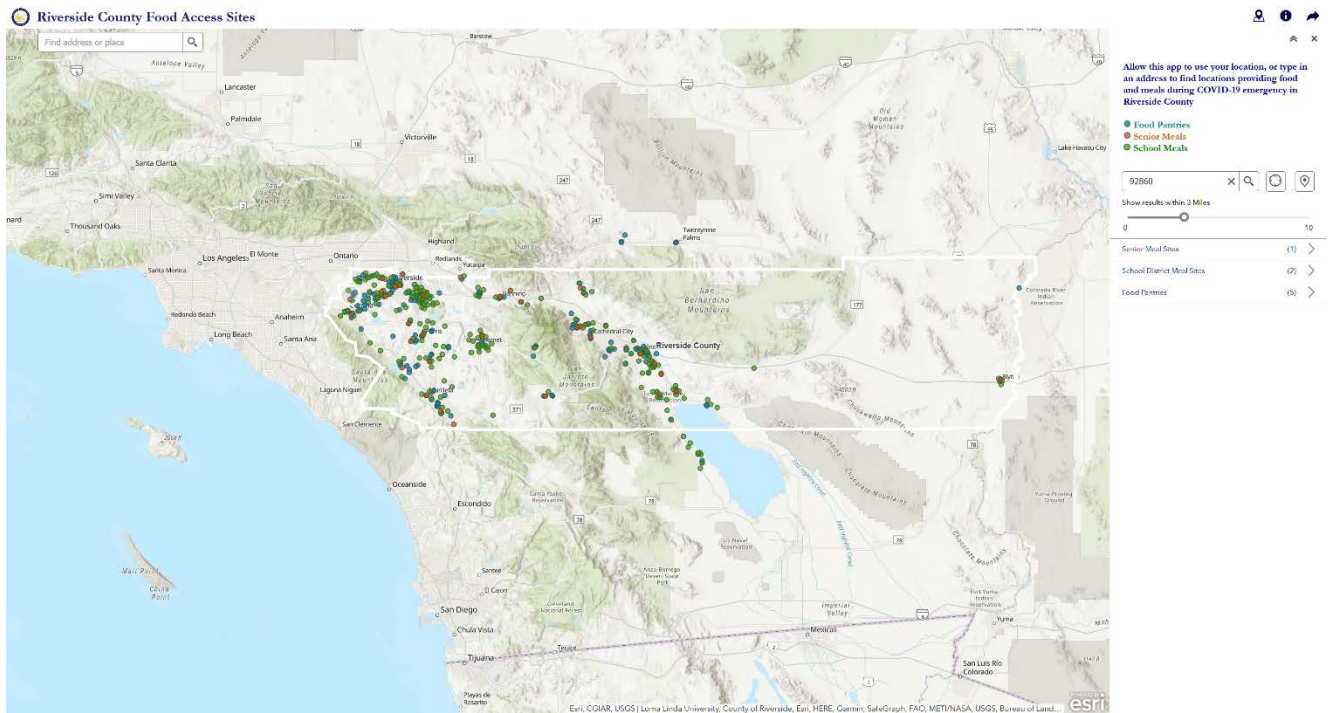
<https://www.rivcoph.org/>

<https://www.rivcoph.org/coronavirus>

RUHS Public Health:

- Riverside County launches map of local food resources [English](#) / [Spanish](#) - April 23, 2020
- [Behavioral health support available to public to assist with coping and anxiety](#) - April 23, 2020





Riverside County Food Assistance Map - locations providing food and meals during COVID-19 emergency in Riverside County

<https://countyofriverside.maps.arcgis.com/apps/webappviewer/index.html?id=52ca2b425fd14b2387f3676bf6db294e&extent=-13100249.8739%2C3944965.339%2C-12940037.8626%2C4040817.3725%2C102100>

Other Local County Links

Imperial County:

Estimated Population 180,216

<http://www.icphd.org/health-information-and-resources/healthy-facts/covid-19>

<https://www.arcgis.com/apps/opsdashboard/index.html#/684c52c01a0c4dbda380d7b905ef0b46>

Kern County:

Estimated Population 883,053

<https://kernpublichealth.com/2019-novel-coronavirus/>

Los Angeles County:

Estimated Population 10,098,052

<http://publichealth.lacounty.gov/media/Coronavirus/>

Orange County:

Estimated Population 3,164,182

https://www.ochealthinfo.com/phs/about/epidasmt/epi/dip/prevention/novel_coronavirus

San Bernardino County:

Estimated Population 2,135,413

<http://wp.sbcounty.gov/dph/coronavirus/>

San Diego County:

Estimated Population 3,302,833

https://www.sandiegocounty.gov/content/sdc/hhsa/programs/phs/community_epidemiology/dc/2019-nCoV/status.html

San Luis Obispo County:

Estimated Population 281,455
<https://www.emergencyslo.org/en/covid19.aspx>

Santa Barbara County:

Estimated Population 443,738
<https://publichealthsb.org/>
<https://publichealthsb.org/dashboard/>

Ventura County

Estimated Population 848,112
<https://www.vcemergency.com/>