



Daily Situation Summary Wednesday, April 22, 2020 As of 10:00 AM

Always check with trusted sources for the latest accurate information about novel coronavirus.

- **World Health Organization**
<https://www.who.int/>
- **Centers for Disease Control and Prevention**
<https://www.cdc.gov/>
- **Food and Drug Administration**
<https://www.fda.gov/emergency-preparedness-and-response/counterterrorism-and-emerging-threats/coronavirus-disease-2019-covid-19>
- **California Department of Public Health**
<https://www.cdph.ca.gov/>
- **County Department/Public Health**
<https://www.rivcoph.org/>
- **Residents in most counties can call 2-1-1**

This can't be real? Fact-checking resources.

- Boom - <https://www.boomlive.in/>
- Snopes - <https://www.snopes.com/>
- FEMA - <https://www.fema.gov/coronavirus-rumor-control>
- WHO - <https://www.who.int/about/communications/cyber-security>

Need PPE? - I have not vetted these sources

- 1Point3Acres - <https://coronavirus.1point3acres.com/ppe>
- Biotechnology Innovation Organization (BIO).
The BIO Coronavirus Hub – https://hub.bio.org/landing-page/community-home?mkt_tok=eyJpIjoiWW1FeFpqYzJPRFJrWWpKaSIsInQiOiJaS1ZpSWE2czZpdFwvUEtKbCsxUFZDK29MdzA2K3FMNTEyRDlocjJyMDJDN2FoRzR3RHYxU1o3QTY2QWczdmdvbWpCRHZzUTI EQ3ZUWklyZXFPmzdxQ0NFWU5EeFFjU0ZqWXBwT1wvQlZZVnk5IVTZPMldcL3NlbTJRXC96M042YWtOclAifQ%3D%3D
- FEMA PPE exchange- Operates like any other Adobe connect page
No log-in required-- <https://fema.connectsolutions.com/ppeexchange>

Quick Reference Sheet

Global Update:

Total cases: 2,471,136 (83,596 new)

Total deaths: 169,006 (5,119 new)

More detail on page 3

National Update:

Total cases: 776,093

Total deaths: 41,758

More detail on page 4

State California Update:

Total cases: 33,261

Total deaths: 1,268

More detail on page 9

Riverside County:

Total cases: 2,960

Total deaths: 93

More detail on page 11

Health and Support

More detail on page 22

Weather

More detail on page 23

Working on web dashboard options. More to come...

Test site only for ideas – requires Flash player, the full site reloads every 30 minutes, some content updates more often.

- Built for screen size 2560X1440 it will scale but it may not work as expected
- Please provide any feedback on the layout and what your needs may be

<http://neptune.signage.me/WebService/SignagePlayerApp.html?eri=f7bee07a7e79c8f1d7951b4d24de4713c22f16&playerParams=157d9d758e0f050f9ab8a92fe9c8076689>

****Extraordinary Assumptions: There are a lot of different data sources in this report not all of them match but aid to provide an overall picture of the current situation**

COVID-19 Data Source Comparison - https://covid-19.splunkforgood.com/covid_19_datasource_comparison

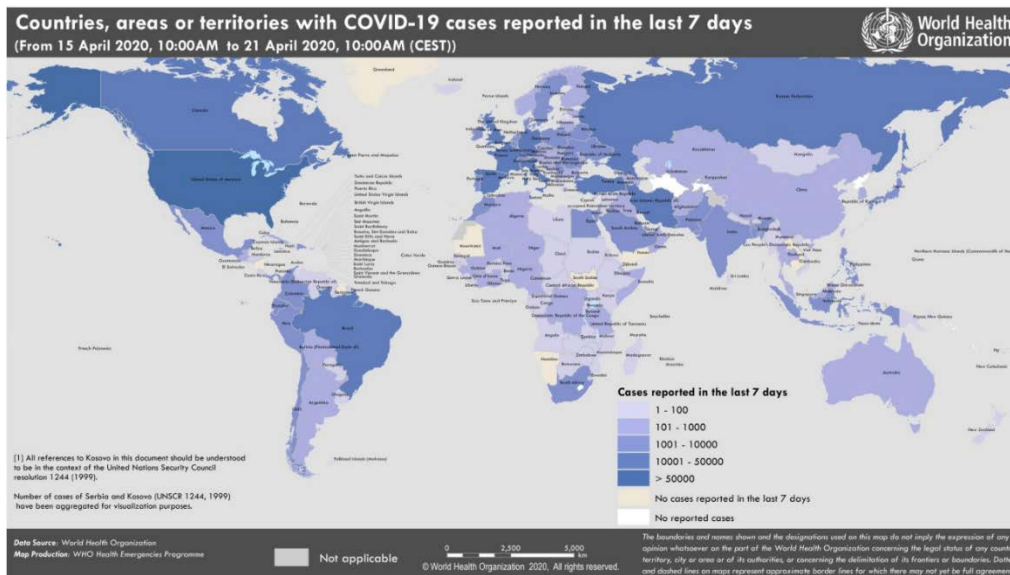
Global Update:

Total cases: 2,471,136 (83,596 new)

Total deaths: 169,006 (5,119 new)

[https://www.who.int/redirect-pages/page/novel-coronavirus-\(covid-19\)-situation-dashboard](https://www.who.int/redirect-pages/page/novel-coronavirus-(covid-19)-situation-dashboard)

Globally, as of **2:00am CEST, 22 April 2020**, there have been **2,471,136 confirmed cases** of COVID-19, including **169,006 deaths**, reported to WHO.



SITUATION IN NUMBERS

total (new cases in last 24 hours)

Globally

2 397 217 confirmed (83 007)
162 956 deaths (5109)

European Region

1 187 184 confirmed (38 143)
106 342 deaths (2756)

Region of the Americas

893 119 confirmed (34 869)
42 686 deaths (2071)

Western Pacific Region

134 507 confirmed (2069)
5685 deaths (37)

Eastern Mediterranean Region

134 470 confirmed (5037)
6185 deaths (137)

South-East Asia Region

31 670 confirmed (2094)
1341 deaths (66)

African Region

15 555 confirmed (795)
704 deaths (42)

WHO RISK ASSESSMENT

Global Level Very High

Global News Reports:

WHO and GlobalCitizen's "One World, Together at Home" concert in collaboration with Lady Gaga has been a great success

- The show of global friendship and solidarity has also raised US\$55 million for WHO's Solidarity Response Fund, which will be used to support countries to prevent, detect, and respond to the pandemic

<https://www.who.int/emergencies/diseases/novel-coronavirus-2019/donate>

WHO has published "International Guidelines for Certification and Classification (Coding) of COVID-19 as Cause of Death"

<https://www.who.int/classifications/icd/covid19/en/>

Trump immigration ban to last 60 days, targeting those seeking permanent residency

- The order will only apply to individuals seeking permanent residency. "In other words, those receiving green cards," Trump said. It will not apply to those entering the U.S. on a temporary basis.
- After the 60-day period, the administration will reevaluate whether to extend or modify the order.
- Trump did not provide any further details on whether there would be other exemptions and noted that the order was still being written.

<https://www.japantimes.co.jp/news/2020/04/22/world/us-donald-trump-immigration-ban-60-days-permanent-residency/#.XqBoB5I7kUE>

Crude Oil Prices Lowest In U.S. History

- U.S. Crude oil prices are the lowest in history, dropping the price at the gas pump.
<http://www.wbiw.com/2020/04/22/crude-oil-prices-lowest-in-u-s-history/>

“Solidarity” clinical trial for COVID-19 treatments

- "Solidarity" is an international clinical trial to help find an effective treatment for COVID-19, launched by the World Health Organization and partners.
- The Solidarity Trial will compare four treatment options against standard of care, to assess their relative effectiveness against COVID-19. By enrolling patients in multiple countries, the Solidarity Trial aims to rapidly discover whether any of the drugs slow disease progression or improve survival. Other drugs can be added based on emerging evidence.

<https://www.who.int/emergencies/diseases/novel-coronavirus-2019/global-research-on-novel-coronavirus-2019-ncov/solidarity-clinical-trial-for-covid-19-treatments>

U.S.-Canadian border closure extended another 30 days to nonessential travel

National Update:

Cases of COVID-19 Reported in the US, by Source of Exposure

Total cases: 776,093

Total deaths: 41,758

Numbers close out at 4 p.m. the day before reporting

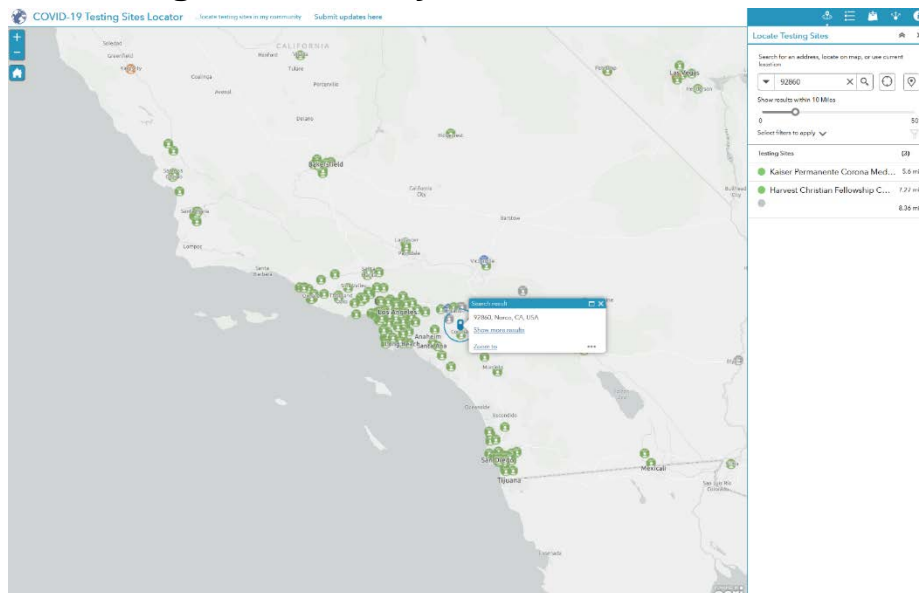
<https://www.cdc.gov/coronavirus/2019-ncov/cases-updates/cases-in-us.html>

COVID-19 Situation in the Region of the Americas as of 21 April 2020 (14:00 EST)

- An additional 31,345 cases and 2,601 deaths were reported in the past 24 hours, representing a 4% (cases) and 5% (deaths) relative increase compared to the previous day. Majority of the new cases (25,634 cases, 82%) and deaths (2,154 deaths, 83%) continue to be reported from the United States of America.

<https://www.paho.org/en/topics/coronavirus-infections/coronavirus-disease-covid-19>

Find a testing center near you



<https://gis Corps.maps.arcgis.com/apps/webappviewer/index.html?id=2ec47819f57c40598a4eaf45bf9e0d16>

National, State, and Local News

Governor Gavin Newsom Launches #CaliforniansForAll Service Initiative

- PDF Attached in Email

San Diego Comic-Con 2020 officially off due to coronavirus

- San Diego Comic-Con, the gigantic four-day pop culture convention scheduled for July 23-26, has been canceled due to the coronavirus crisis. It's the first-ever cancellation in the event's 50-year history.

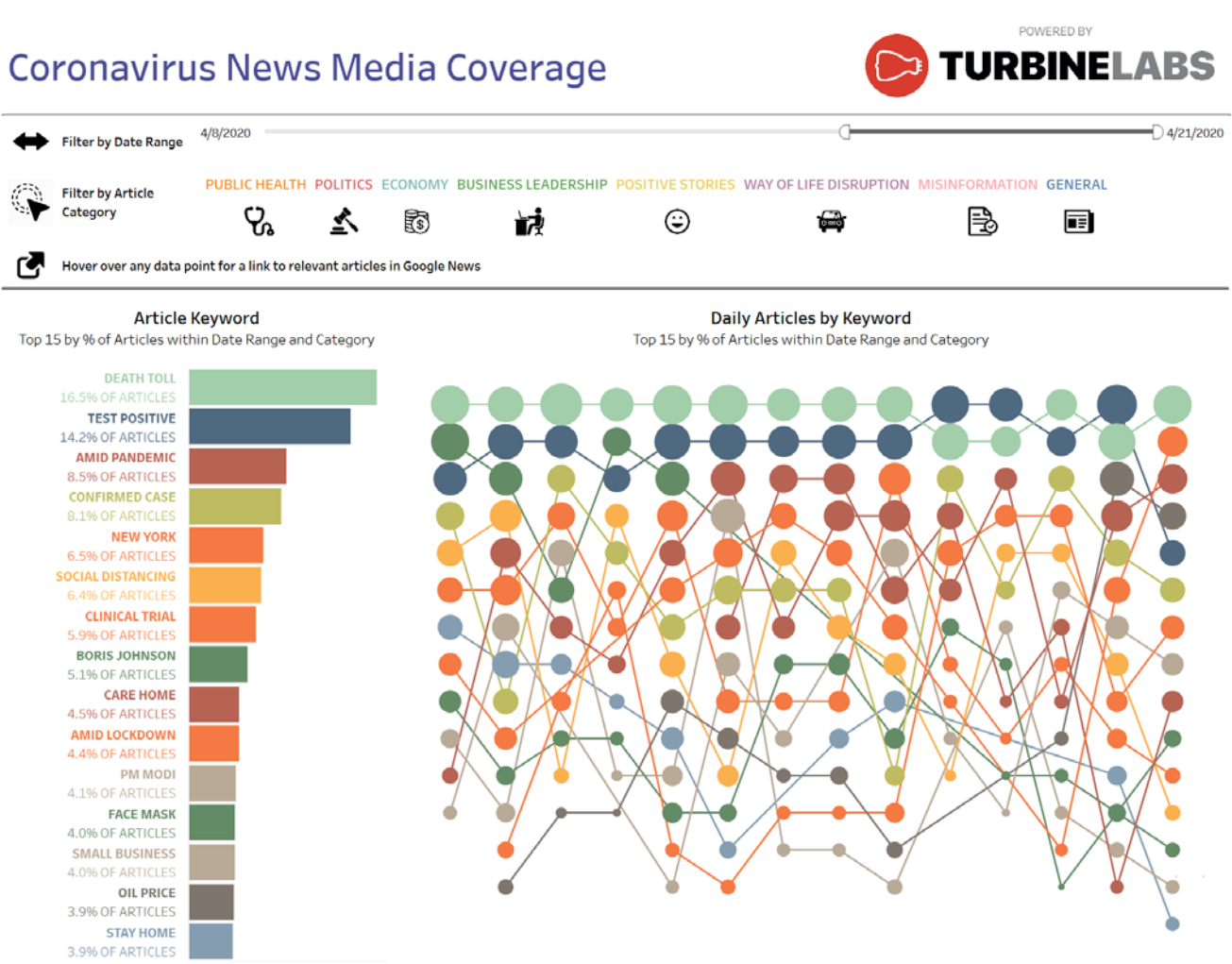
<https://www.cnet.com/news/san-diego-comic-con-2020-officially-canceled-due-to-coronavirus/>

The 2020 Elections: Is America Ready to Vote by Mail?

https://www.governing.com/next/The-2020-Elections-Is-America-Ready-to-Vote-by-Mail.html?utm_term=The%202020%20Elections%3A%20Is%20America%20Ready%20to%20Vote%20by%20Mail&utm_campaign=The%202020%20Elections%3A%20Is%20America%20Ready%20to%20Vote%20by%20Mail&utm_content=email&utm_source=Act-On+Software&utm_medium=email

Lockdowns help seismologists improve earthquake measurements

<https://www.youtube.com/watch?v=iY8O960GEQo&feature=share&fbclid=IwAR0EjhEuDqKVBo81AqRcHeIRUAESdMkwwnDKvbU5b73M-CwBwgzJ4rydb6A>



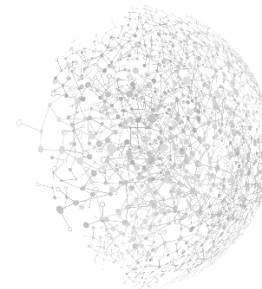
Turbine Labs in collaboration with Tableau is proud to present an easily digestible interactive visualization that provides the ability to see the Covid-19 outbreak as a visual data story in order to make more informed decisions. Turbine Lab's custom visualization serves as a resource to view the volume of daily Covid-19 articles by keyword with the option to drill down to specific article categories that are of interest or importance. This approach effectively cuts through the intensified "noise" of the media to better identify stories that are trending and topical.

https://public.tableau.com/profile/turbine.lab.analysts#!/vizhome/TurbineLabs-CovidReportingDashboardbyKeyword_15862011017140/v1-CoronavirusNewsMediaCoverage

COVID-19: Economic recovery dashboard

Introduction

The COVID-19 pandemic is a global crisis without modern parallel. The lack of precedent for a black swan event so broad in its impact across geographic, demographic, and economic sectors explains why many public and private sector organizations were already becoming strained even before the World Health Organization officially declared a pandemic on March 11, 2020. The actions companies take during the recovery period can set the foundation for them to achieve sustained growth and performance after the pandemic is over.



This is a monitor of health, community/social activity, financial and economic indicators that will signal when the rebound stage has arrived.

Powered by **Tableau Public**.

Last published: 22-Apr-20

<https://public.tableau.com/profile/deloitte.visual.analytics#!/vizhome/DeloitteCOVID-19EconomicRecoveryDashboard/DeloitteCOVID-19Analysis>

FEMA - COVID-19 WHOLE-OF-AMERICA RESPONSE

- FEMA, HHS, and our federal partners work with state, local, tribal and territorial governments to execute a whole-of-America response to COVID-19 pandemic and protect the health and safety of the American people. Even as FEMA is focused on responding to COVID-19, we are also preparing and maintaining readiness for other disasters to include spring flooding, severe weather and the upcoming hurricane season.

FEMA reports approximately 2,160,207 (+85,678) cases and 146,088 (+6,710) deaths worldwide. In the US there are approximately 720,609 (+28,622) cases and 37,202 (+2,066) deaths.

4,179,934 (+148,006) COVID19 tests have been administered nationwide

- **Healthcare and Public Health**
 - FEMA continues to expedite movement of commercially pre-sourced and commercially procured critical supplies from the global market to medical distributors in various locations across the U.S. through Project Airbridge.
 - As of April 20, FEMA, HHS, and the private sector combined have coordinated the delivery of or are currently shipping: 57.4 million N95 respirators, 85.3million surgical masks, 6.4 million face shields, 12.3 million surgical gowns, 638 million gloves, 10,998 ventilators and 8,450 federal medical station beds.
 - On April 20, the Substance Abuse and Mental Health Services Administration under U.S. Department of Health and Human Services began releasing \$110 million in emergency grant funding to strengthen access to treatments for substance use disorders and serious mental illnesses during the COVID-19 pandemic.
 - The U.S. Army Corps of Engineers has awarded contracts for the design and build of 32 alternate care facilities in Alaska, Arizona, California, Colorado, District of Columbia, Florida, Illinois, Maryland, Michigan, Missouri, New Jersey,

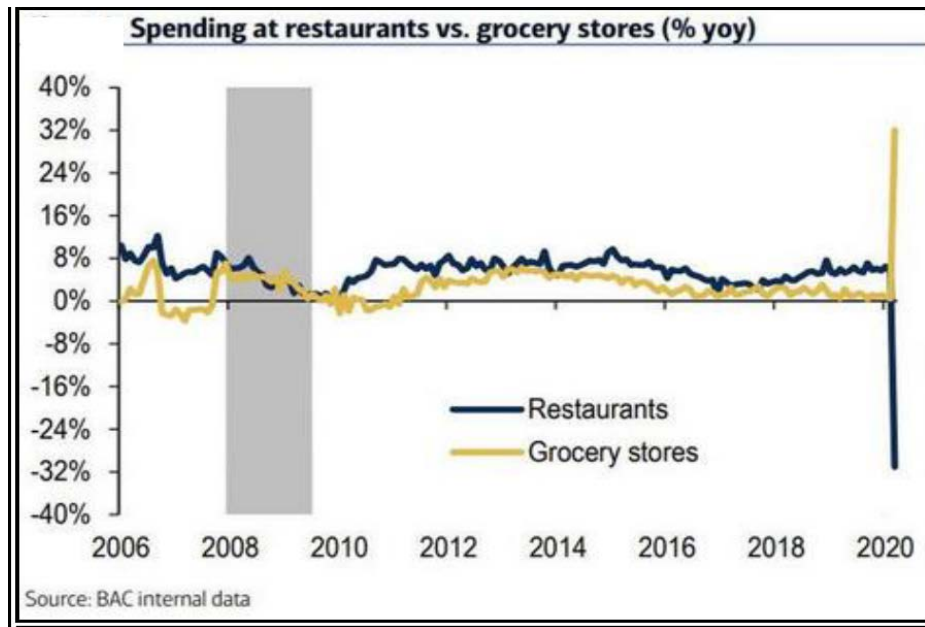
New Mexico, New York, Oregon, Tennessee, U.S. Virgin Islands, and Wisconsin.

- As of April 21, 1,779 USACE personnel are activated to support the COVID-19 mission, with more than 15,000 personnel engaged in additional response efforts.

- WA State received 875,500 cloth face masks. 430,000 will go directly to counties and tribes.
- FDA implemented temporary policy allowing facilities to compound drugs that are identical or near identical to FDA approved products for mitigating regional shortages
- Experimental COVID-19 vaccine transitioning from National Institute of Allergy and Infectious Diseases (NIAID) to Biomedical Advanced Research and Development Authority (BARDA) for further clinical trials and large-scale manufacturing
- Approximately 14K New York residents will be randomly chosen for antibody testing to see if they had COVID-19 but were asymptomatic. Antibody testing is regarded as one of the key tools necessary to understand the scale of the outbreak and potential for reopening the economy.

- **Economics**

94% Americans are still under shelter-in-place orders and consumers are not spending money. Retail sales data from the U.S. Department of Commerce came in down 8.7% for March — the largest one-month drop in history. This number under-represents the actual decline in consumer spending due to its lagging nature.



- **Food & Agriculture**

- ESF-6 is coordinating with FEMA Region I on Connecticut feeding resource request form (RRF) for 100,000 meals. The region anticipates more RRFs are possible.
- A main meat processing facility in Salem, OH will re-open starting with first shift on 20 April, with a concentrated number of team members.

- A processing plant in Worthington, MN shut down indefinitely. The facility had the first reporting of positive COVID-19 workers late last week and by Sunday, 19 April, the number had reached 60
- **Food, Water, & Shelter**
 - Employee absenteeism at critical supply chain nodes and customer facing retail locations particularly among the grocery-related workforce is growing. Measures taken by the grocery industry to mitigate virus transmission within the supply chain are contributing to reduced demand velocity and some transportation delays.
 - The Oklahoma governor announced some restaurants and businesses previously deemed non-essential could start opening as soon as early May.
 - In Massachusetts, nearly five times as many people are applying for government assistance to buy food during the pandemic.
 - Mississippi is experiencing a 50% increase in food bank demands due to a 4,600% increase in unemployment.
- **Transportation**
 - (Rail)
 - Effective April 19th, the Regional Transportation District (RTD) implemented their Limited Service Plan effectively limiting or cancelling service to a variety of bus and rail routes throughout the 8 county service area. This follows the suspension of fare collection and capacity limitations of 15 passengers per bus and 30 riders per rail car.

COVID-19 Update



Situation: FEMA, HHS, and federal partners are working with state, local, tribe, and territorial governments to execute a whole-of-America response to the COVID-19 pandemic. The federal government is coordinating the deployment of PPE and ventilators from multiple sources including SNS, donations, and vendor procurements. The President released Guidelines for Opening American Up Again and the Federal Government is continuing to work with governors across the country to ensure they have the equipment, supplies, and testing resources they need to reopen safely and responsibly.

- FEMA NRCC remains at Level I in unified effort with HHS SOC; all FEMA RRCCs activated
- FEMA IMAT-A teams deployed to 27 states/territories; LNOs deployed to 37 states/territories
- 56 major disaster declarations approved; All State / Territory EOCs activated
- 33,357 FEMA, DOD, HHS, and CDC personnel deployed/activated in support of COVID-19 response
- Testing: 4,302,022 cumulative as of April 20

Community Based Testing Sites

- 116,234 (+10,422) individuals tested at CBTS locations since Apr 20

Supply Chain Stabilization

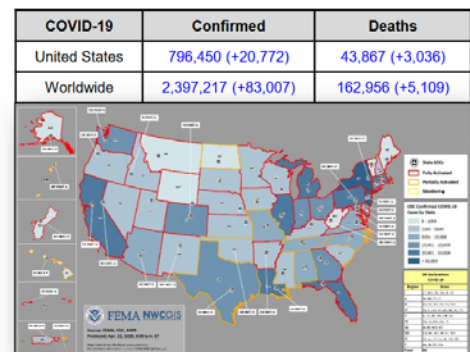
- Project Airbridge activity: 69 flights complete; 45 flights scheduled; 114 total. Flight #68 landed in Los Angeles, CA; cargo is being assessed. Flight #69 landed in Chicago, IL; cargo is being assessed. Flight #70 scheduled to arrive in Chicago; cargo will be assessed upon arrival.

Community Mitigation Measures

- At Risk Individuals Report published by the CDC
- New Liaison Officers to states and locals; in support of plan for reopening

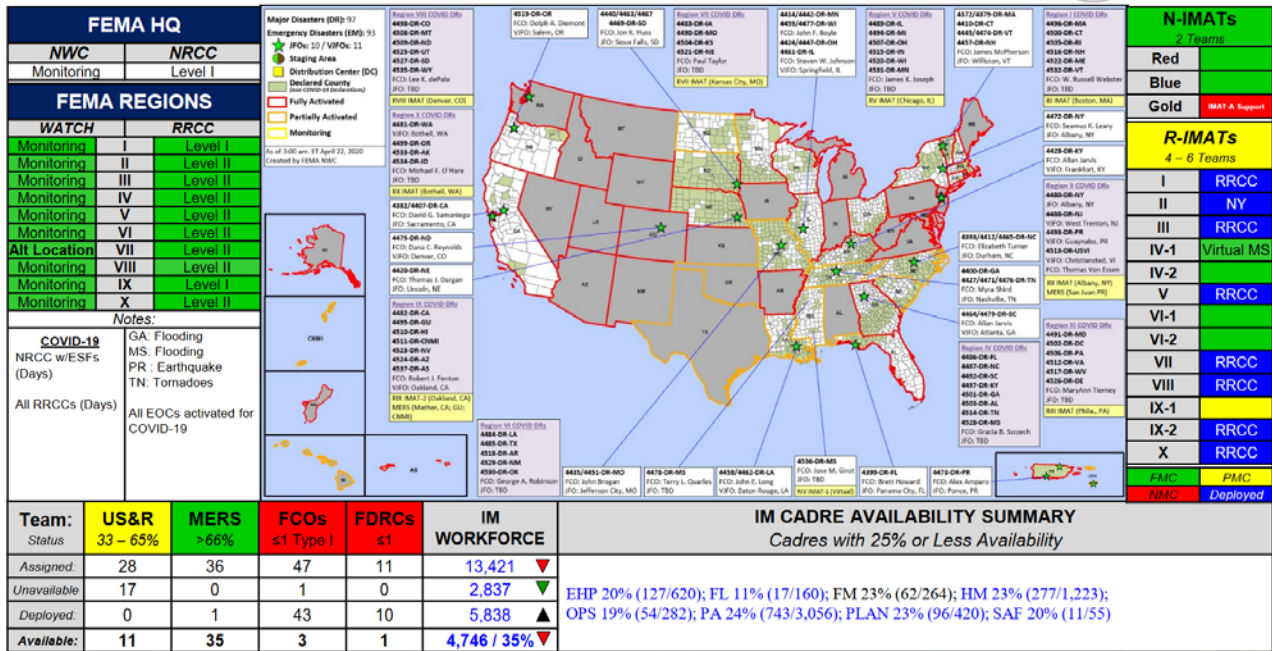
Public Health

- Substance Abuse and Mental Health Services Administration will begin releasing \$110 million in emergency funding for substance abuse treatment and mental health services



(FEMA SLB COVID-19 dated 5:00 pm Apr 21)

FEMA Common Operating Picture



State California Update:

COVID-19 in California by the Numbers

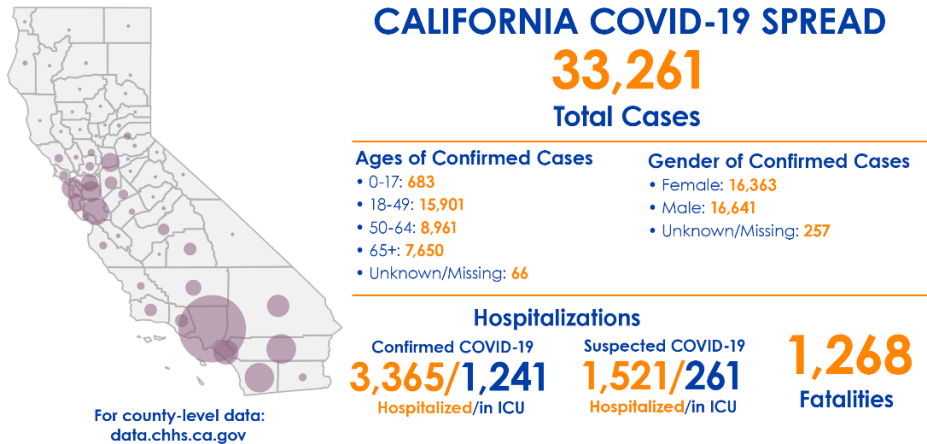
Total cases: **33,261**
 Total deaths: **1,268**
 Estimated Population: **39,148,760**

Note: The following numbers reflect information received from local health jurisdictions as of 2 p.m. PDT. More current numbers may be available from local health jurisdictions.

<https://www.cdph.ca.gov/Programs/CID/DCDC/Pages/Immunization/nCoV2019.aspx>

California COVID-19 By The Numbers

April 21, 2020
 Numbers as of April 20, 2020



Testing Data

State	Positive	Negative	Pending	Total Tests (Population)
CA	33,261 11.4%	259,645	7,200	300,106 (39,512,223)

Test Locations:

- San Francisco
- Palo Alto
- Hayward
- San Jose
- San Mateo
- Lake Elsinore
- Sacramento
- Martinez
- San Fernando Valley
- L.A. city
- L.A. city
- L.A. city
- L.A. city
- L.A. city
- Los Angeles
- Los Angeles
- Los Angeles
- L.A. city
- L.A. city
- L.A. city
- Fremont
- El Centro
- Calexico
- San Joaquin

<https://coronavirus.1point3acres.com/en/test>

What is closed or restricted?

Gov. Newsom has ordered all Californians to stay at home, placing mandatory restrictions on the lives of all 40 million residents.

<p>Statewide</p> <p>Face coverings Recommended wearing face coverings in public places</p> <p>Grocery & essential retail Open</p> <p>Government Open only for essential functions</p> <p>Parks Parking lots, state park campgrounds and indoor facilities closed</p> <p>Restaurants & bars Bars closed, delivery/takeout only</p> <p>Recreation Gyms, movie theaters, etc. closed</p> <p>Gatherings All large gatherings banned</p>	<p>Riverside County » Following state order</p> <p>Face coverings Residents ordered to wear facemasks in public</p> <p>Grocery & essential retail Open</p> <p>Government Open only for essential functions</p> <p>Restaurants & bars Bars closed, delivery/take out only</p> <p>Parks Closed</p> <p>Schools Most K-12 schools are distance learning. Colleges online only</p> <p>Recreation Gyms, movie theaters, etc. closed</p> <p>Gatherings Except in individual households</p>	<p>Imperial County » Following state order</p> <p>Face coverings Residents ordered to wear facemasks in public</p> <p>Grocery & essential retail Open</p> <p>Government Open only for essential functions</p> <p>Restaurants & bars Bars closed, delivery/take out only</p> <p>Parks Parking lots, state park campgrounds and indoor facilities closed</p> <p>Schools Most K-12 schools are distance learning. Colleges online only</p> <p>Recreation Gyms, movie theaters, etc. closed</p> <p>Gatherings All non-essential public gatherings are prohibited</p>	
<p>Kern County » Following state order</p> <p>Face coverings Recommended wearing face coverings in public places</p> <p>Grocery & essential retail Open</p> <p>Government Open only for essential functions</p> <p>Restaurants & bars Bars closed, delivery/take out only</p> <p>Parks Closed Easter and Passover weekend</p> <p>Schools Most K-12 schools are distance learning. Colleges online only</p> <p>Recreation Gyms, movie theaters, etc. closed</p> <p>Gatherings All non-essential public gatherings are prohibited</p>	<p>Los Angeles County » Safer at home</p> <p>Face coverings Recommended wearing face coverings in public places</p> <p>Grocery & essential retail Open</p> <p>Government Open only for essential functions</p> <p>Restaurants & bars Bars closed, delivery/take out only</p> <p>Parks Closed (includes piers, beaches and public trails)</p> <p>Schools Most K-12 schools are distance learning. Colleges online only</p> <p>Recreation Gyms, movie theaters, etc. closed</p> <p>Gatherings Except in individual households</p>	<p>Orange County » Following state order</p> <p>Face coverings Recommended wearing face coverings in public places</p> <p>Grocery & essential retail Open</p> <p>Government Open only for essential functions</p> <p>Restaurants & bars Bars closed, delivery/take out only</p> <p>Parks Parking lots, state park campgrounds, indoor facilities and playgrounds closed</p> <p>Schools Most K-12 schools are distance learning. Colleges online only</p> <p>Recreation Gyms, movie theaters, etc. closed</p> <p>Gatherings Except in individual households</p>	<p>San Bernardino County » Following state order</p> <p>Face coverings Residents ordered to wear facemasks in public</p> <p>Grocery & essential retail Open</p> <p>Government Open only for essential functions</p> <p>Restaurants & bars Bars closed, delivery/take out only</p> <p>Parks Closed</p> <p>Schools Most K-12 schools are distance learning. Colleges online only</p> <p>Recreation Gyms, movie theaters, etc. closed</p> <p>Gatherings Except in individual households</p>

<p>San Diego County » Stay at home</p> <p>Face coverings Recommended wearing face coverings in public places</p> <p>Grocery & essential retail Open</p> <p>Government Open only for essential functions</p> <p>Restaurants & bars Bars closed, delivery/take out only</p> <p>Parks Parking lots, state park campgrounds and indoor facilities closed</p> <p>Schools Most K-12 schools are distance learning. Colleges online only</p> <p>Recreation Gyms, movie theaters, etc. closed</p> <p>Gatherings Except in individual households</p>	<p>San Luis Obispo County » Shelter in place</p> <p>Face coverings Recommended wearing face coverings in public places</p> <p>Grocery & essential retail Open</p> <p>Government Open only for essential functions</p> <p>Restaurants & bars Bars closed, delivery/take out only</p> <p>Parks Parking lots, state park campgrounds and indoor facilities closed</p> <p>Schools Most K-12 schools are distance learning. Colleges online only</p> <p>Recreation Gyms, movie theaters, etc. closed</p> <p>Gatherings Except in individual households</p>	<p>Santa Barbara County » Following state order</p> <p>Face coverings Recommended wearing face coverings in public places</p> <p>Grocery & essential retail Open</p> <p>Government Open only for essential functions</p> <p>Restaurants & bars Bars closed, delivery/take out only</p> <p>Parks Parking lots, state park campgrounds, playgrounds and indoor facilities closed</p> <p>Schools Most K-12 schools are distance learning. Colleges online only</p> <p>Recreation Gyms, movie theaters, etc. closed</p> <p>Gatherings All non-essential public gatherings are prohibited</p>	<p>Ventura County » Modified stay at home order</p> <p>Face coverings Recommended wearing face coverings in public places</p> <p>Grocery & essential retail Open</p> <p>Government Open only for essential functions</p> <p>Restaurants & bars Bars closed, delivery/take out only</p> <p>Parks County parks and beaches reopened</p> <p>Schools Most K-12 schools are distance learning. Colleges online only</p> <p>Recreation Gyms, movie theaters, etc. closed, but some businesses allowed to reopen with fewer than 10 people working at a time.</p> <p>Gatherings Gatherings of more than five people prohibited; gathering in vehicles allowed.</p>
---	---	--	---

<https://www.latimes.com/projects/california-coronavirus-cases-tracking-outbreak/>

Local SOCAL County Updates: Riverside County:

COVID-19 by the Numbers

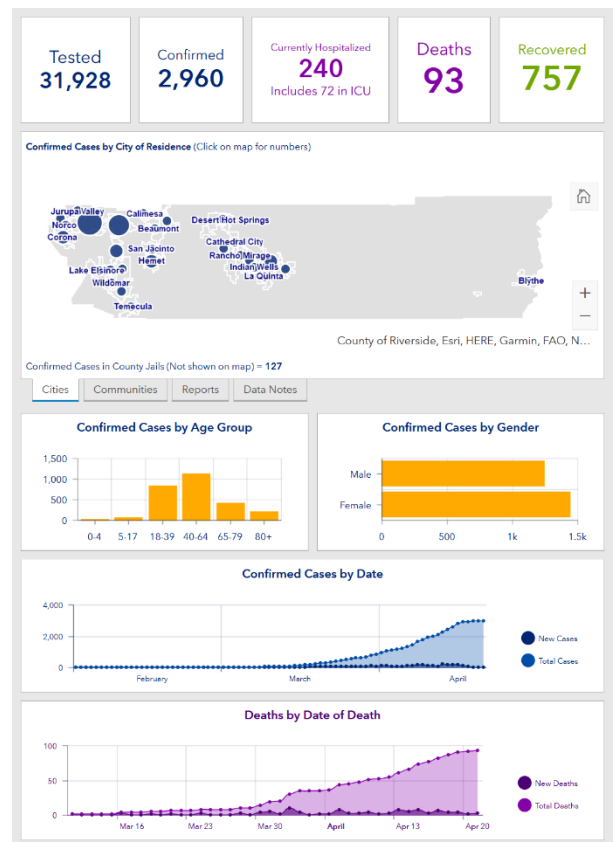
Total cases: **2,960**

Total deaths: **93**

Estimated Population **2,424,790**

<https://www.rivcoph.org/>

<https://www.rivcoph.org/coronavirus>



RUHS Public Health:

Golf courses and some outdoor activities may reopen with restrictions

https://www.rivcoph.org/Portals/0/Documents/CoronaVirus/April/News/4.20.20_golf_reopened_with_restrictions.pdf?ver=2020-04-20-165910-117×tamp=1587427206024

The Dairy Council of California has released a list of free school meal sites during COVID-19 closures. To view the list, see:

<https://www.healthyeating.org/Portals/0/Documents/Schools/School%20Feeding%20Sites/Riverside%20County%20School%20Meal%20Sites.pdf?ver=2020-03-19-113907-430>



COUNTY COVID-19 CASES & PLANNING REPORT

Riverside County, CA (06065)

This infographic dynamically displays COVID-19 cases for each county. Additional resources can be found on Esri's [GIS Resource Hub](#).

2,447,782 Population 3.18 Avg Size Household 759,043 Households 34.8 Median Age 91% Internet at Home COVID-19 Cases Updated: 04/22/2020 2,960 Confirmed Cases 93 Deaths

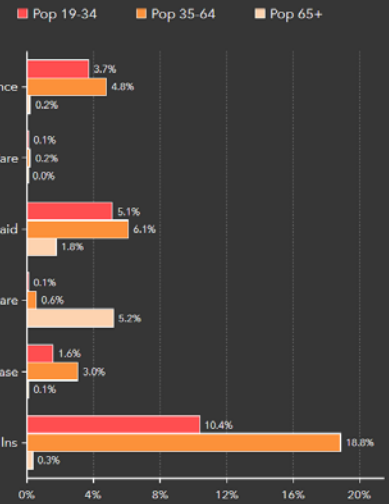
TYPICAL HOSPITAL BED COUNTS

3,537 Licensed Beds
 385 ICU Beds
 3,434 Staffed Beds

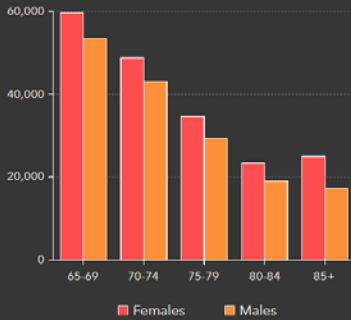
POPULATION AND BUSINESSES

2,235,177 Daytime Population
 67,683 Total Businesses
 659,644 Total Employees

HEALTH INSURANCE COVERAGE (ACS)



SENIOR POPULATION



POVERTY

99,112 Households Below the Poverty Level
 69,908 Households Receiving Food Stamps/SNAP

AT RISK POPULATION

191,919 Households With Disability
 353,649 Population 65+
 30,713 Households Without Vehicle



Source: Esri forecasts for 2019, 2014-2018 American Community Survey (ACS) Data, Businesses counts from [Infoquest](#), Number of Hospital Beds from [Definitive Healthcare](#), COVID-19 cases by [Johns Hopkins CSSE](#)

Note: Medicaid values for population 65+ is defined as Medicaid plus Medicare. For other age groups it is Medicaid only. Source: 2014-2018 American Community Survey (ACS) Data.

<https://www.arcgis.com/apps/opsdashboard/index.html#/dc74772707d94db9a7d24d30ffdcf36c>

LANGUAGE (ACS)

Language (ACS)	Age 5-17	18-64	Age 65+	Total
English Only	277,050	865,701	238,730	1,321,481
Spanish	161,677	528,737	59,390	749,804
Spanish & English Well	155,191	404,605	31,957	591,753
Spanish & English Not Well	5,394	76,865	12,164	94,423
Speak Spanish & No English	1,092	47,267	15,269	63,628
Indo-European	4,768	30,183	11,606	46,065
Indo-European & English Well	4,120	27,905	9,602	41,627
Indo-European & English Not Well	109	1,651	1,453	3,213
Indo-European & No English	39	627	549	1,215
Asian-Pacific Island	10,221	65,094	16,406	92,521
Asian-Pacific Isl & English Well	9,466	54,905	11,335	75,706
Asian-Pacific Isl & English Not Well	742	8,898	3,645	13,285
Asian-Pacific Isl & No English	13	2,091	1,426	3,530
Other Languages	2,504	10,354	2,479	15,417
Other Language & English Well	2,428	9,345	1,864	13,637
Other Lang. & English Not Well	154	659	343	1,156
Other Language & No English	2	350	272	624



COVID-19 IMPACT PLANNING REPORT

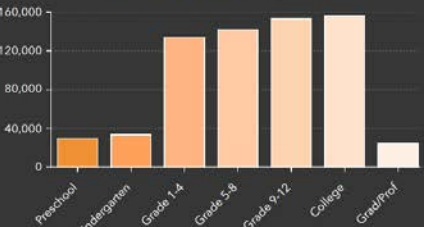
Riverside County, CA (06065)

2,447,782 Population 3.18 Avg Size Household 759,043 Households 34.8 Median Age \$65,079 Median Household Income \$373,313 Median Home Value 83 Housing Affordability 91% Internet at Home

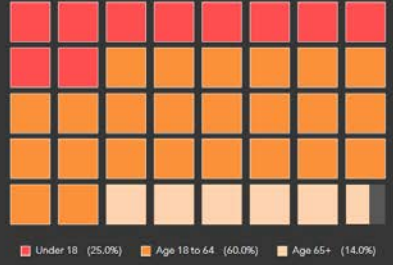
POPULATION AND POVERTY STATUS (ACS)

Category	Total
Population for whom Poverty Status is Determined	2,347,408
Income to Poverty Ratio <0.50	146,635
Income to Poverty Ratio 0.50-0.99	199,089
Income to Poverty Ratio 1.00-1.24	115,684
Income to Poverty Ratio 1.25-1.49	116,683
Income to Poverty Ratio 1.50-1.84	170,672
Income to Poverty Ratio 1.85-1.99	71,431
Income to Poverty Ratio 2.00+	1,527,214

SCHOOL ENROLLMENT (ACS)



POPULATION BY AGE



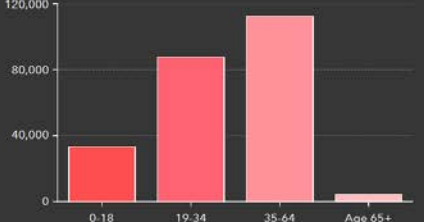
POVERTY LEVELS (ACS)

Category	Below	Above	Total
Total	99,112	619,237	718,349
Married Couple Families	28,361	359,766	388,127
Other Families w/Male Householder	6,476	36,420	42,896
Other Families w/Female Householder	24,315	69,219	93,534
Nonfamilies w/Male Householder	16,476	75,579	92,055
Nonfamilies w/Female Householder	23,484	78,253	101,737

NO HEALTH INSURANCE COVERAGE (ACS)

Category	(ACS) %	Total
Population <19	1.4%	32,976
Population Age 19-34	3.7%	87,588
Population Age 35-64	4.8%	112,387
Population Age 65+	0.2%	4,354

POPULATION NO HEALTH INSURANCE (ACS)



Source: Esri forecasts for 2019, 2014-2018 American Community Survey (ACS) Data, Businesses counts from [Infoquest](#), Number of Hospital Beds from [Definitive Healthcare](#), COVID-19 cases by [Johns Hopkins CSSE](#)

Version 3.0
April 7, 2020

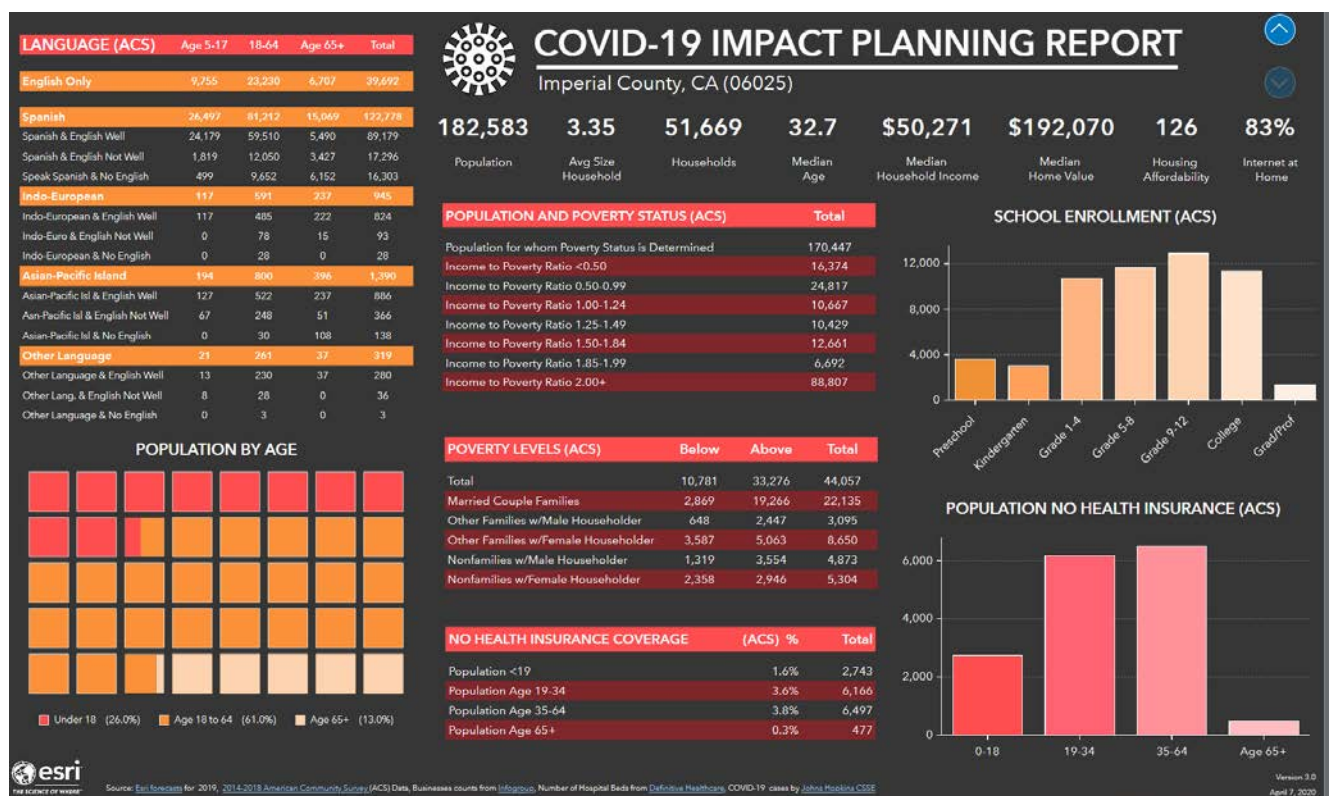
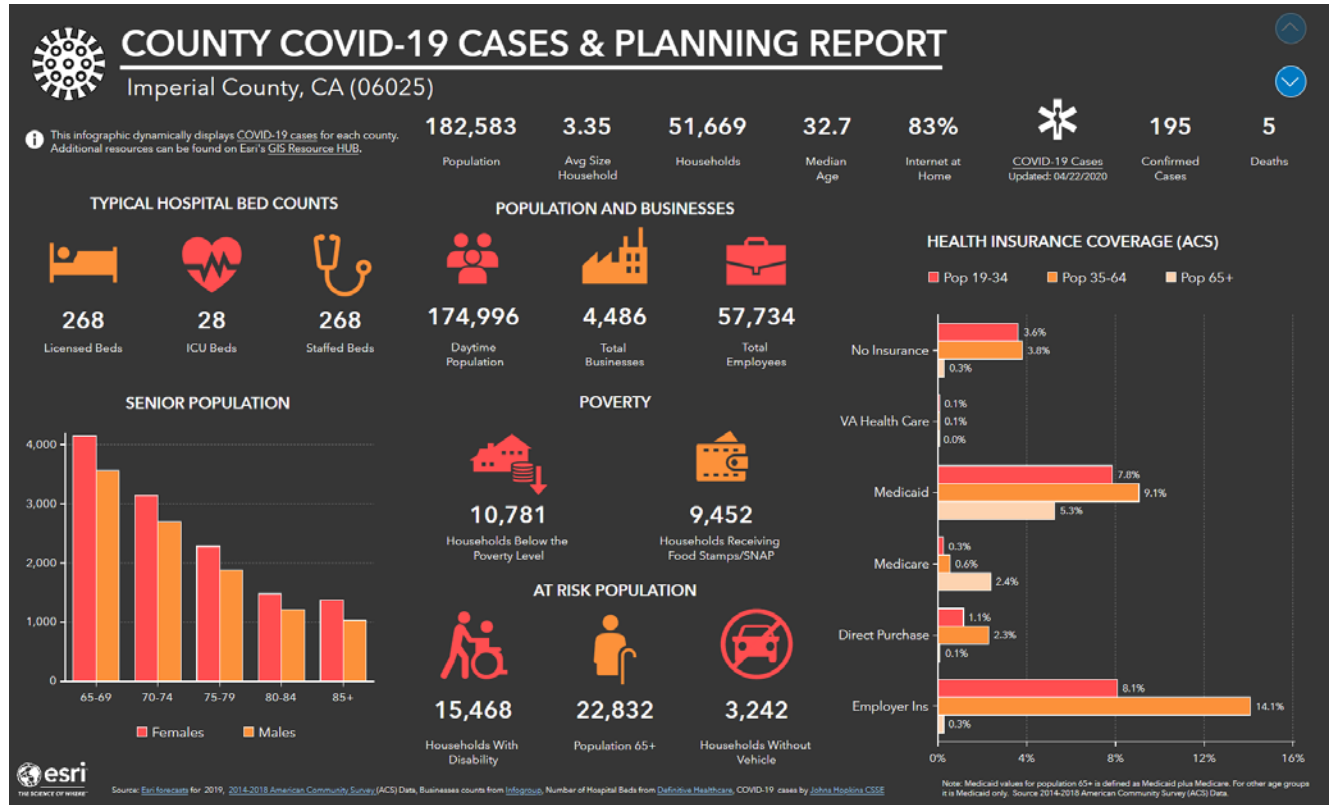
Other Local County Links

Imperial County:

Estimated Population 180,216

<http://www.icphd.org/health-information-and-resources/healthy-facts/covid-19>

<https://www.arcgis.com/apps/opdashboard/index.html#/684c52c01a0c4dbda380d7b905ef0b46>

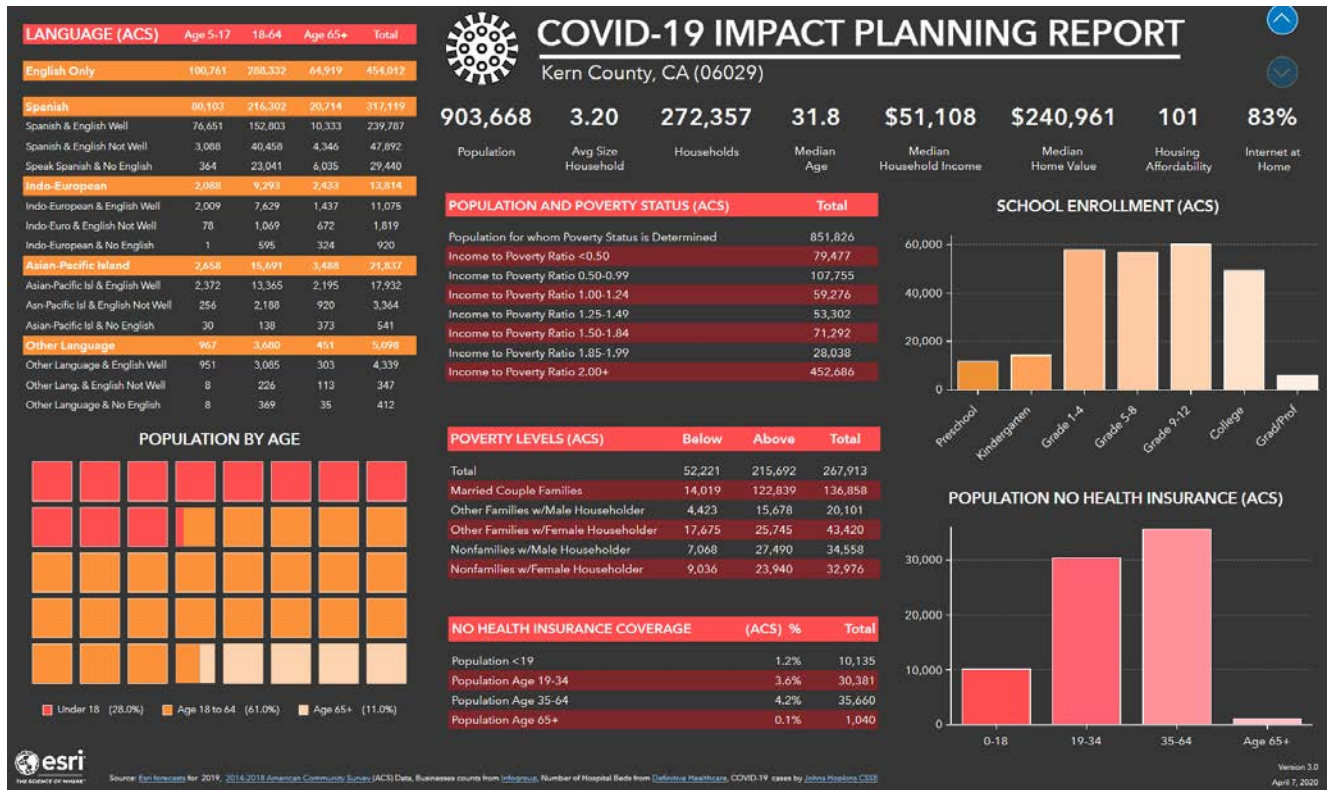
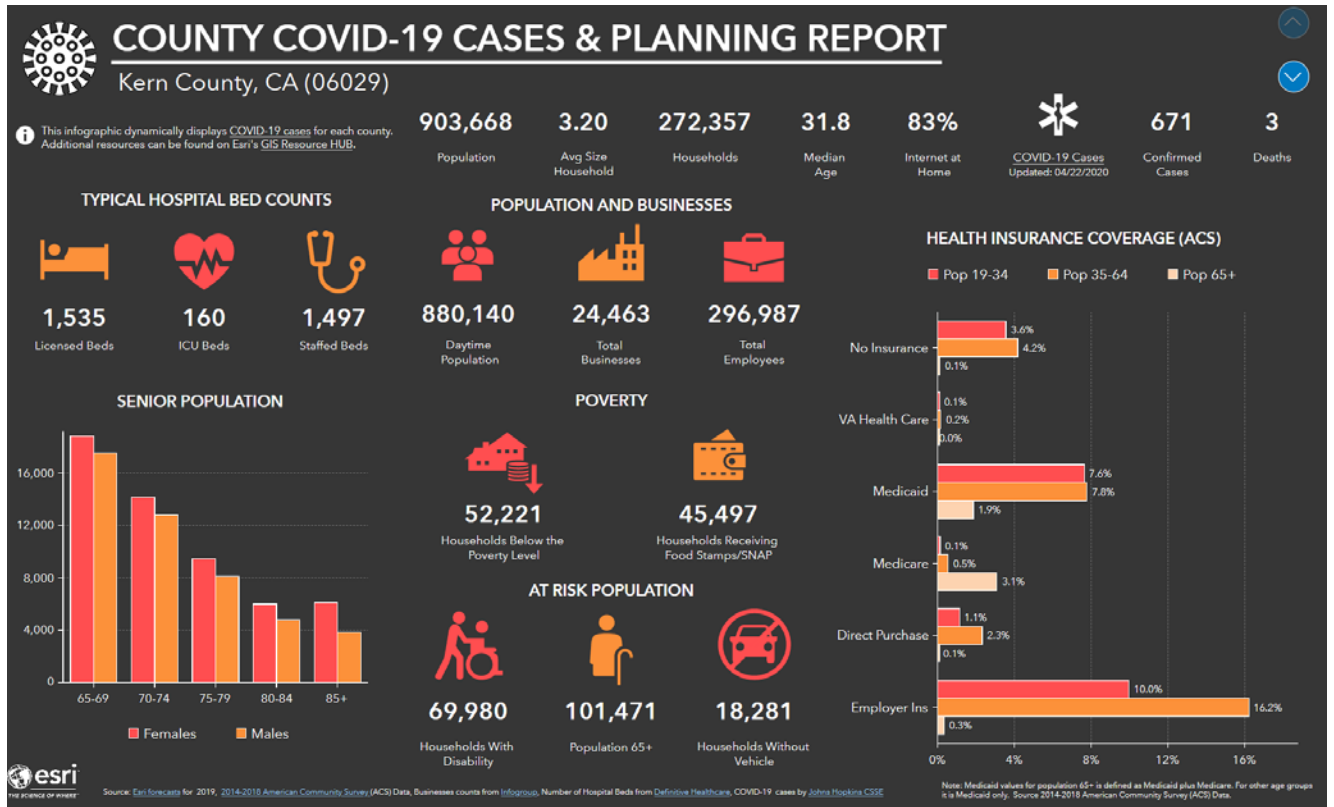


Kern County:

Estimated Population

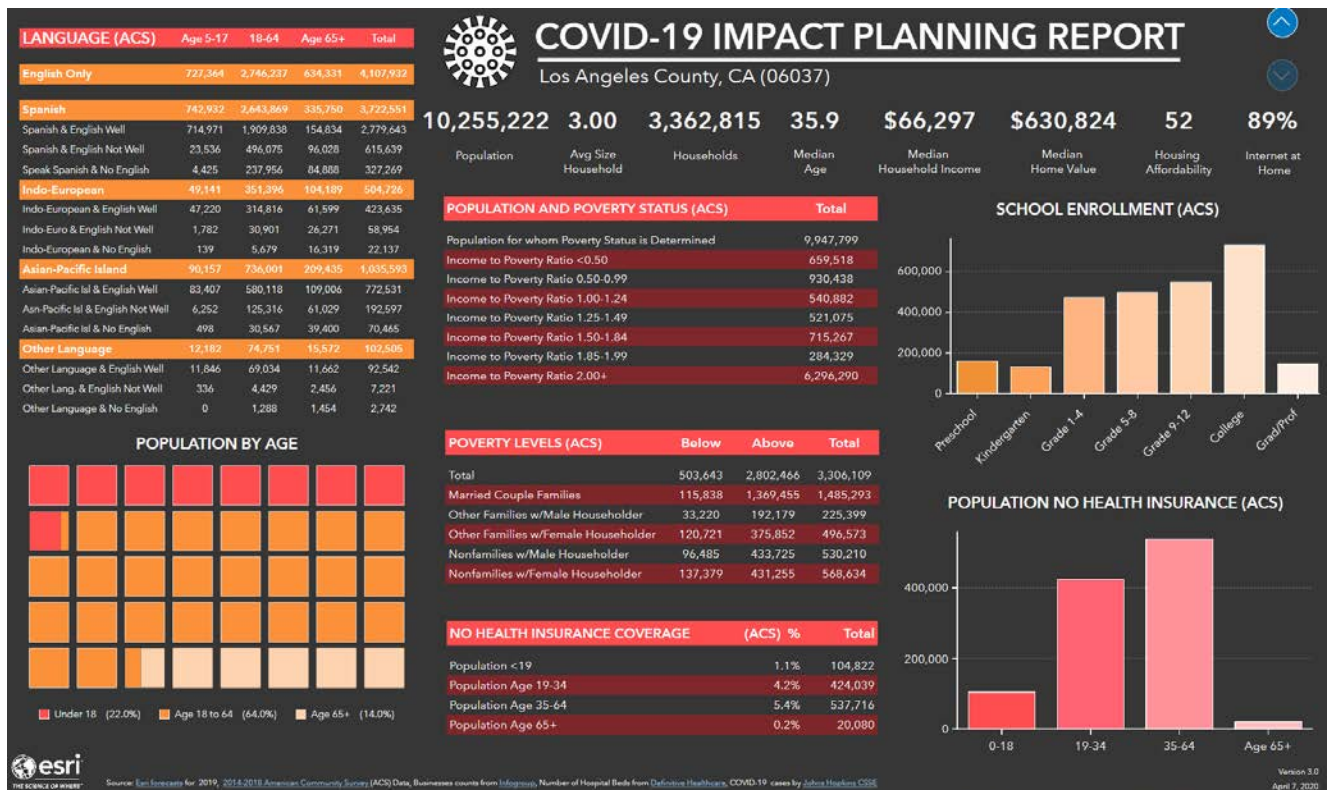
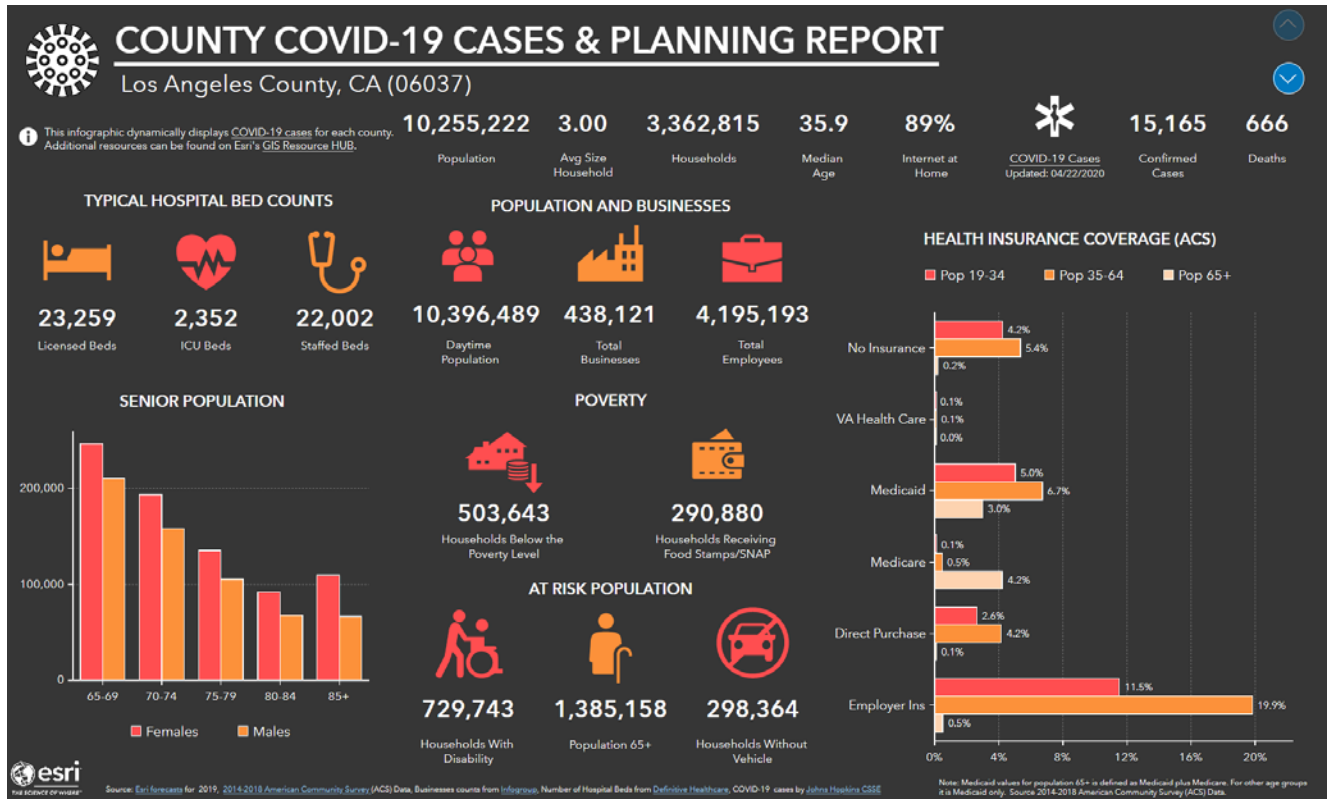
883,053

<https://kernpublichealth.com/2019-novel-coronavirus/>



Los Angeles County:

Estimated Population 10,098,052
<http://publichealth.lacounty.gov/media/Coronavirus/>

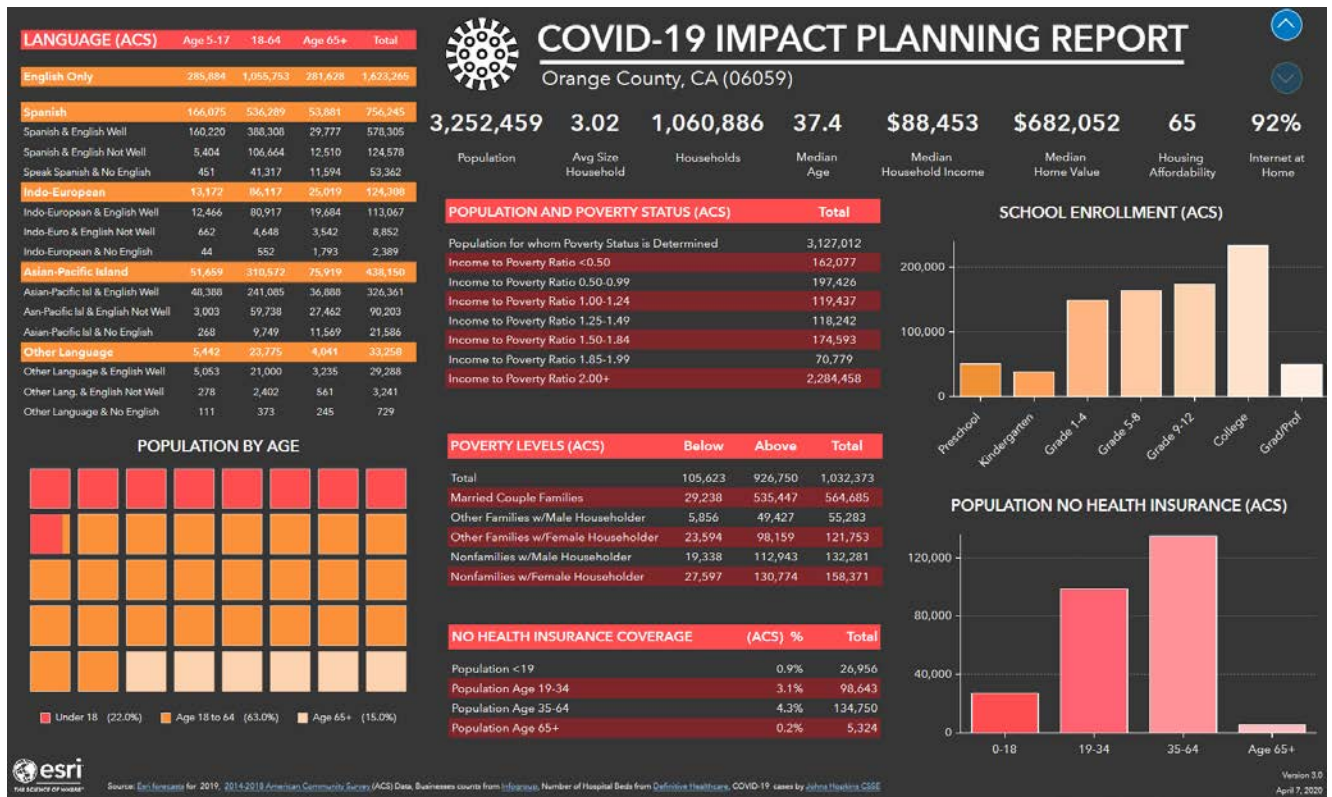
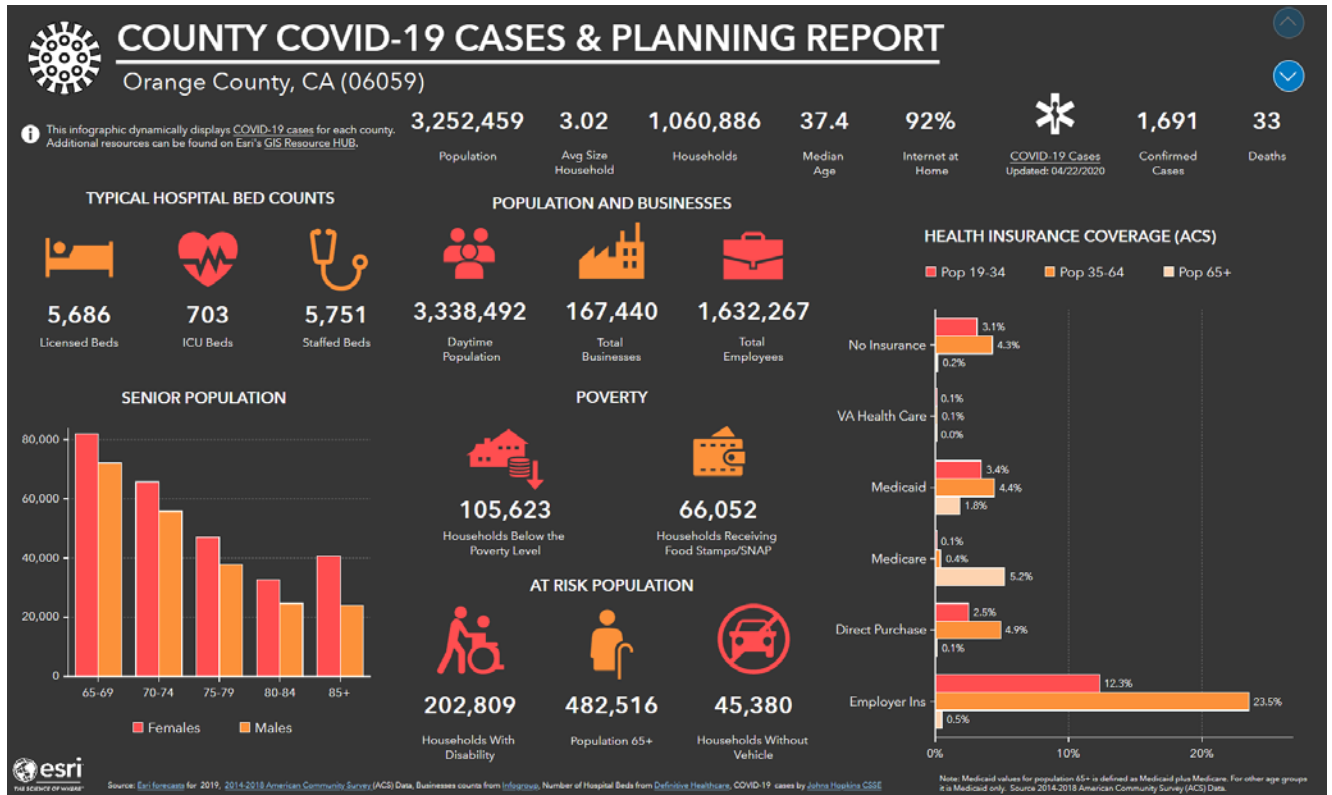


Orange County:

Estimated Population

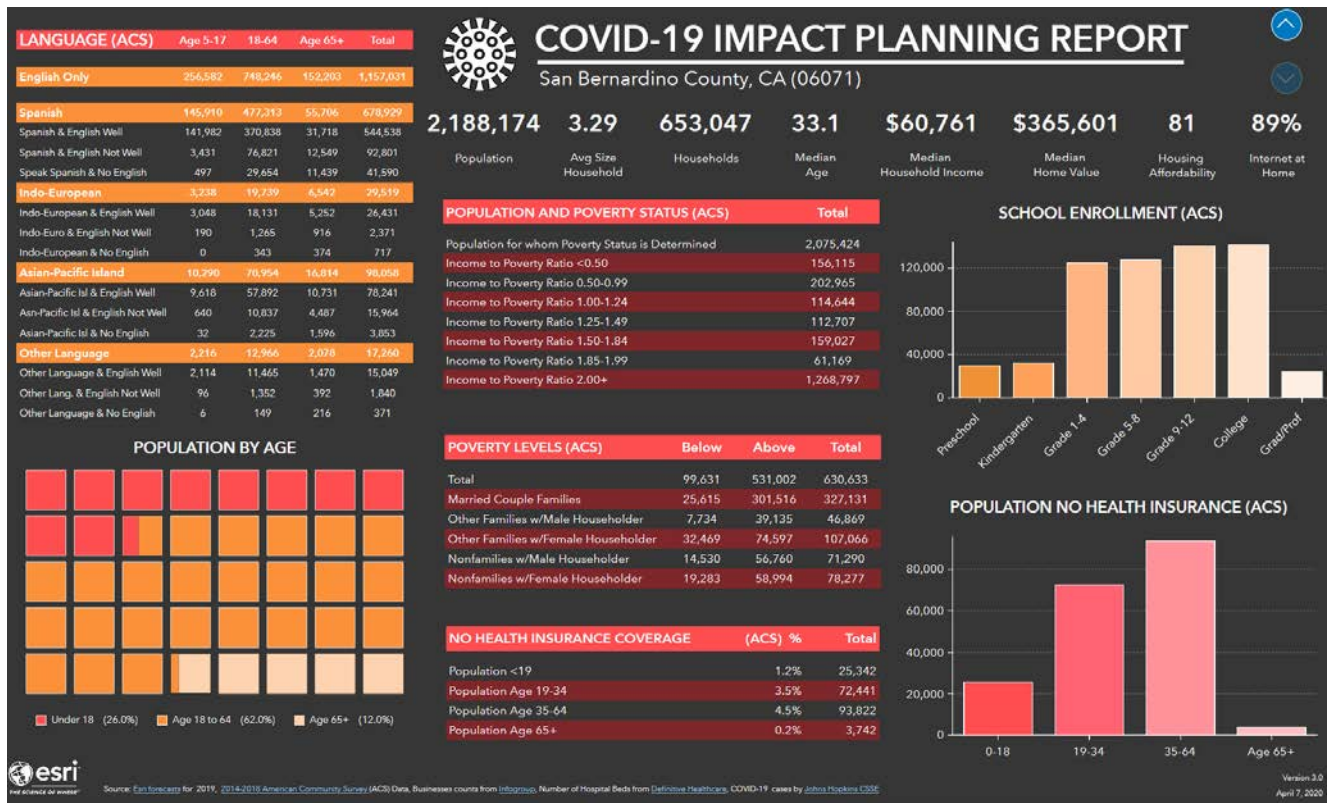
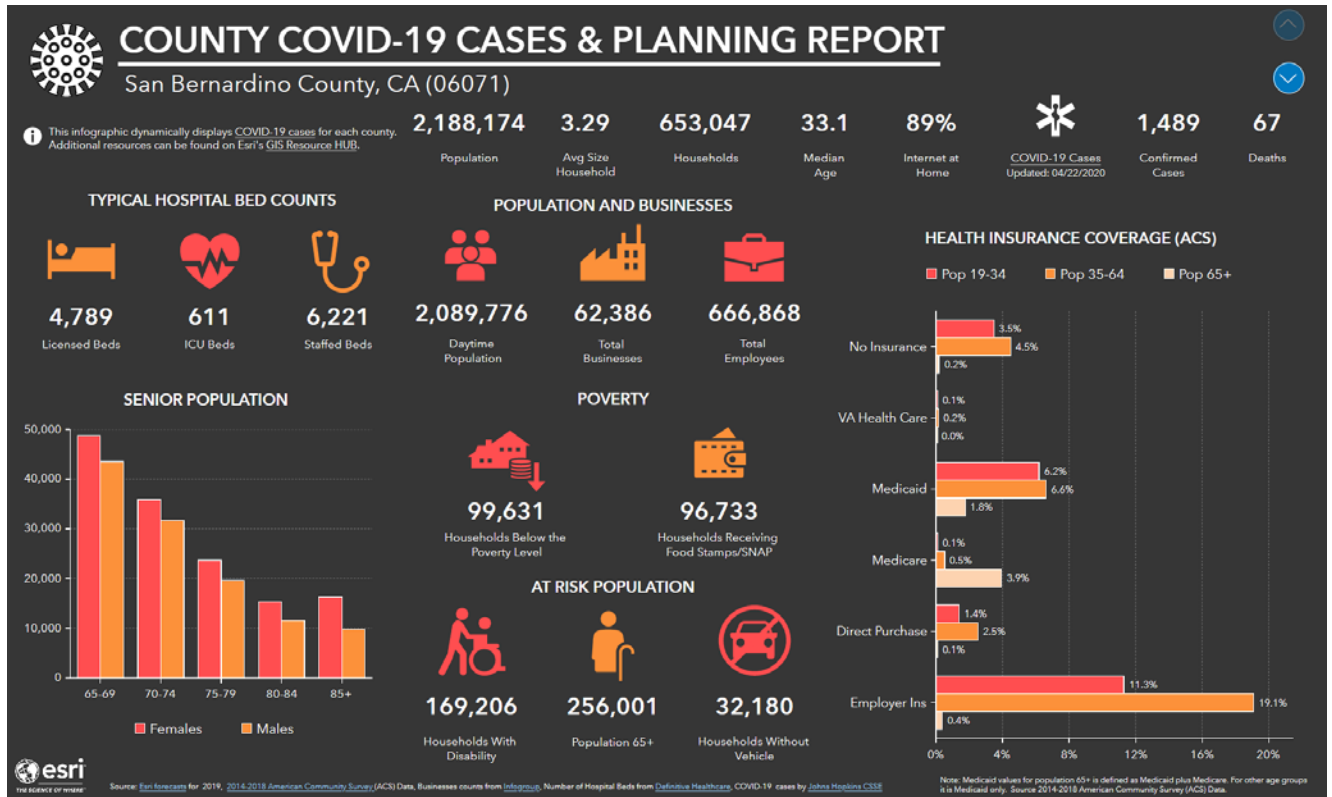
3,164,182

https://www.ochealthinfo.com/phs/about/epidasmt/epi/dip/prevention/novel_coronavirus



San Bernardino County:

Estimated Population 2,135,413
<http://wp.sbcounty.gov/dph/coronavirus/>

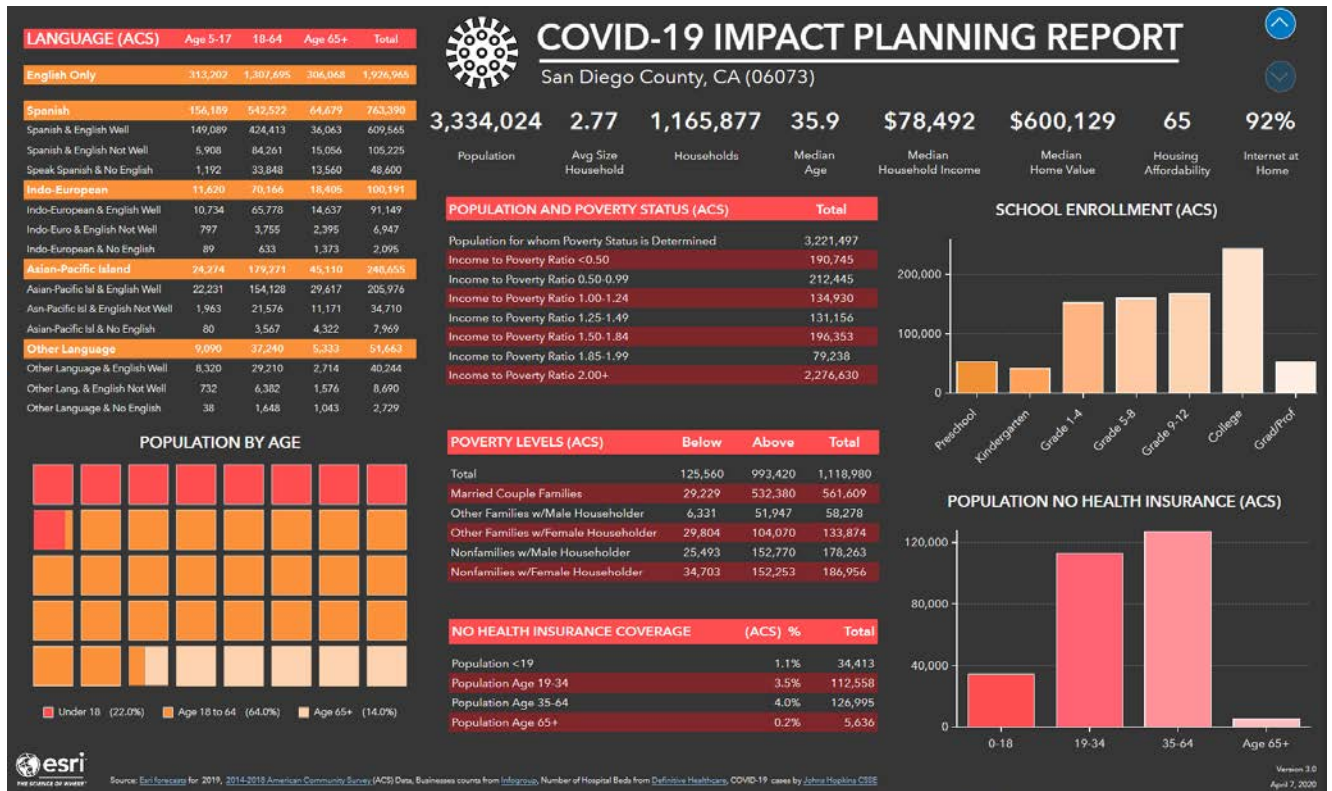
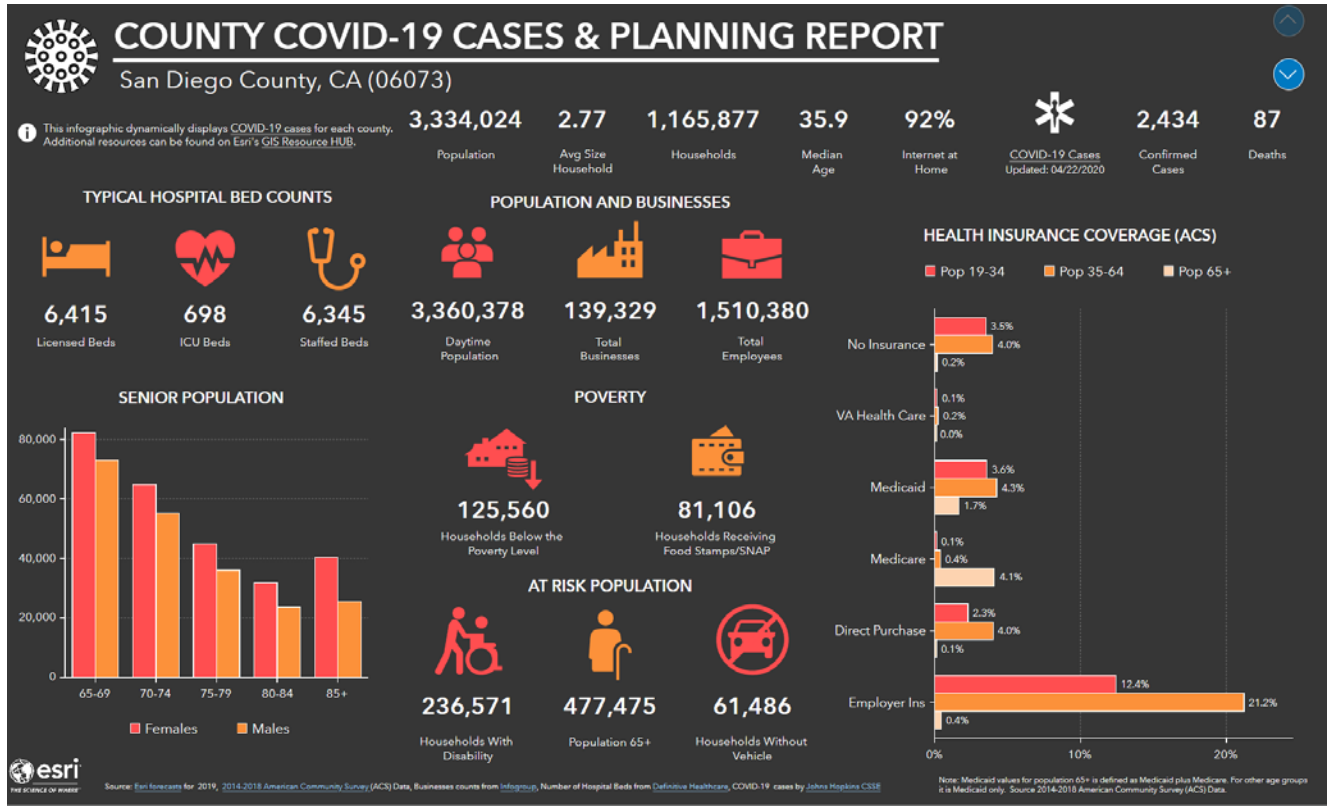


San Diego County:

Estimated Population

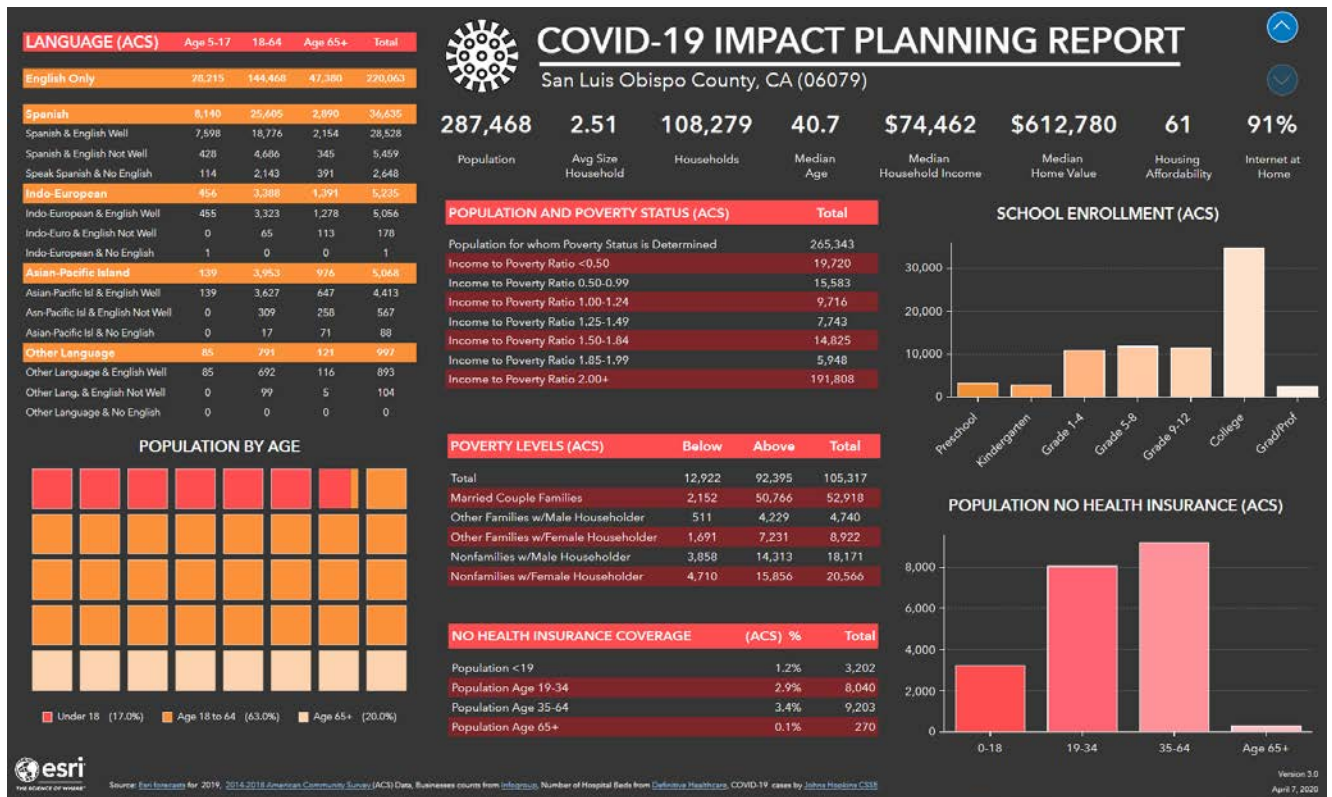
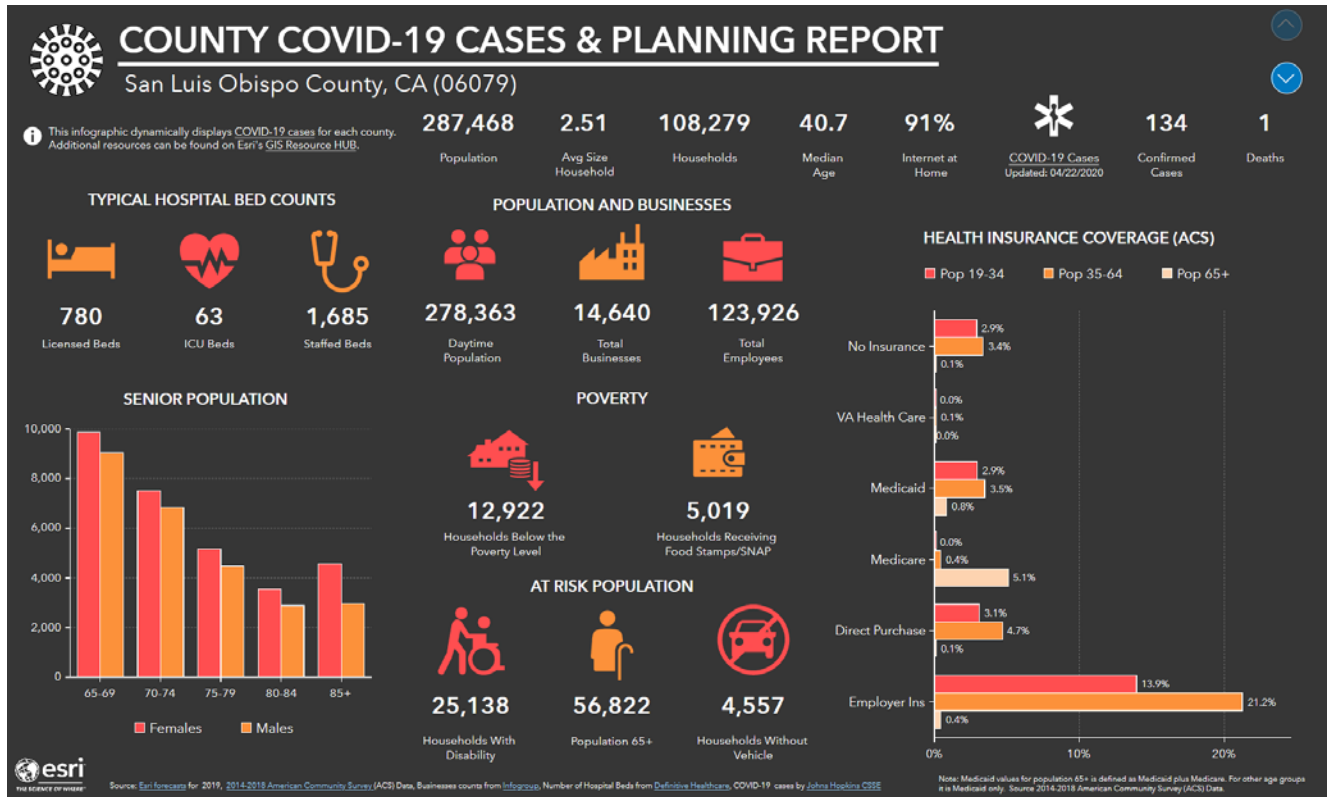
3,302,833

https://www.sandiegocounty.gov/content/sdc/hhsa/programs/phs/community_epidemiology/dc/2019-nCoV/status.html



San Luis Obispo County:

Estimated Population 281,455
<https://www.emergencyslo.org/en/covid19.aspx>



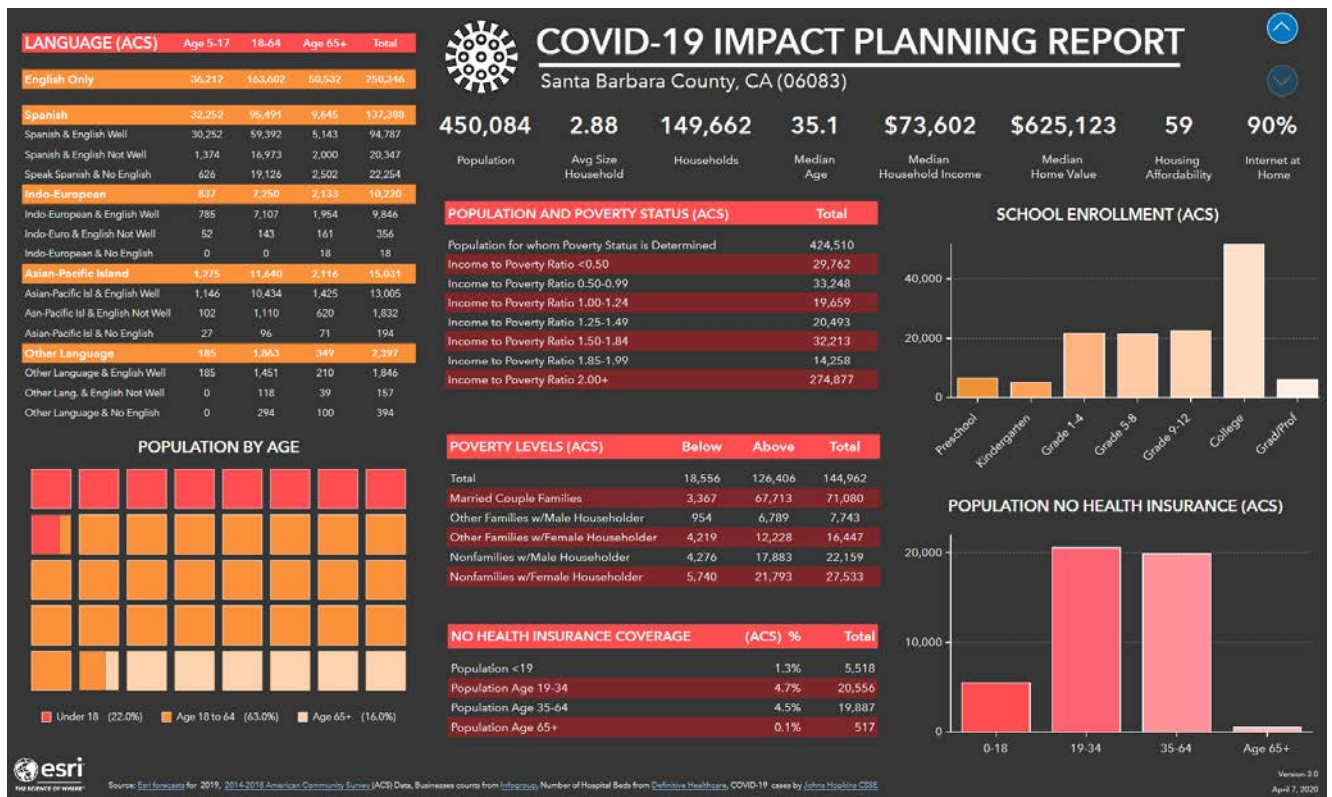
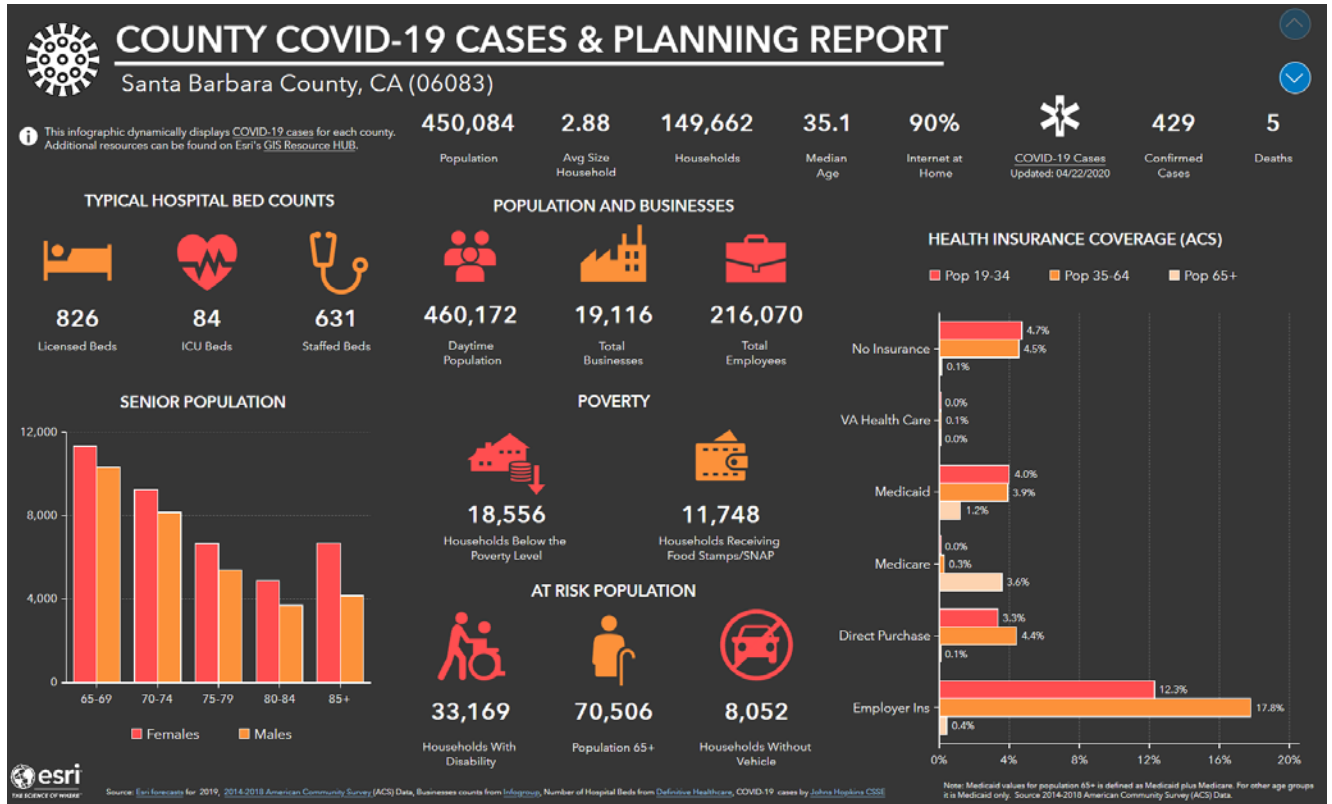
Santa Barbara County:

Estimated Population

443,738

<https://publichealthsbcc.org/>

<https://publichealthsbcc.org/dashboard/>

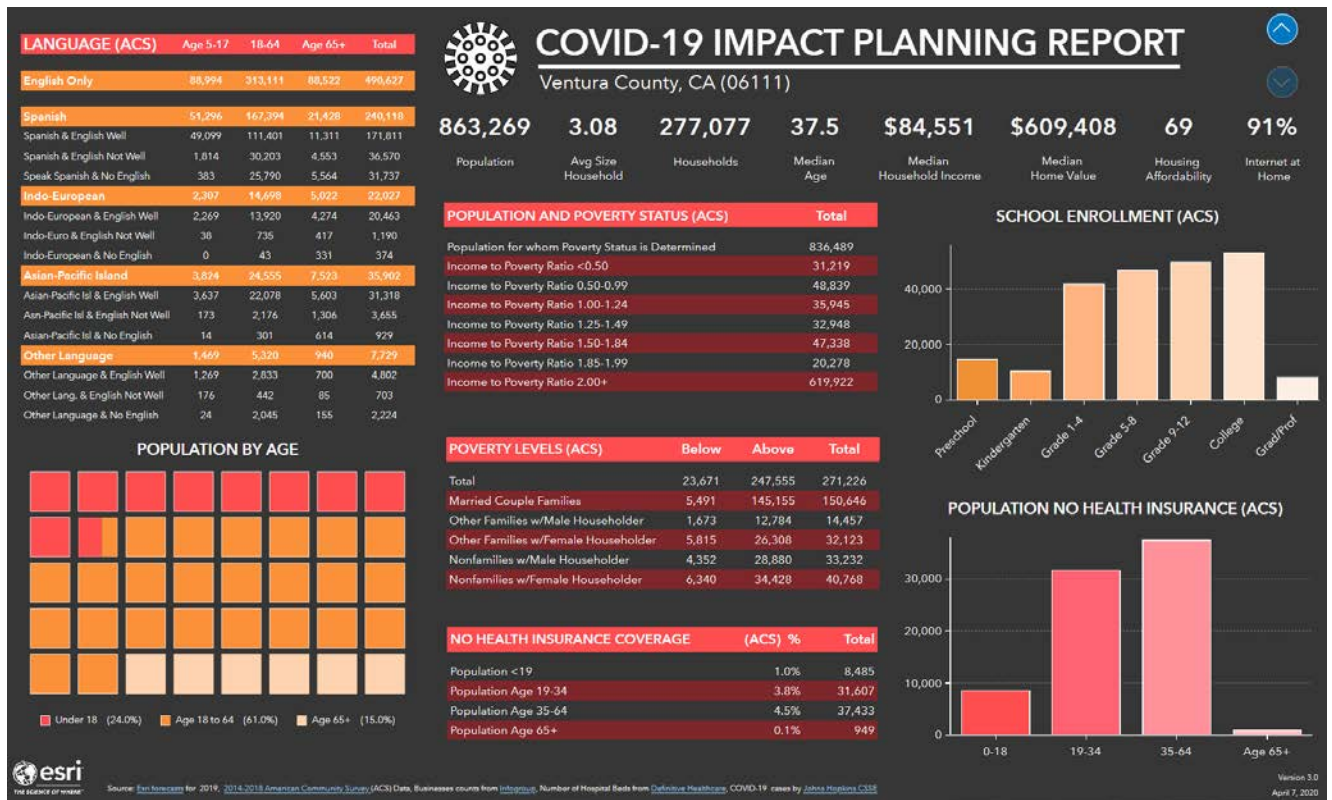
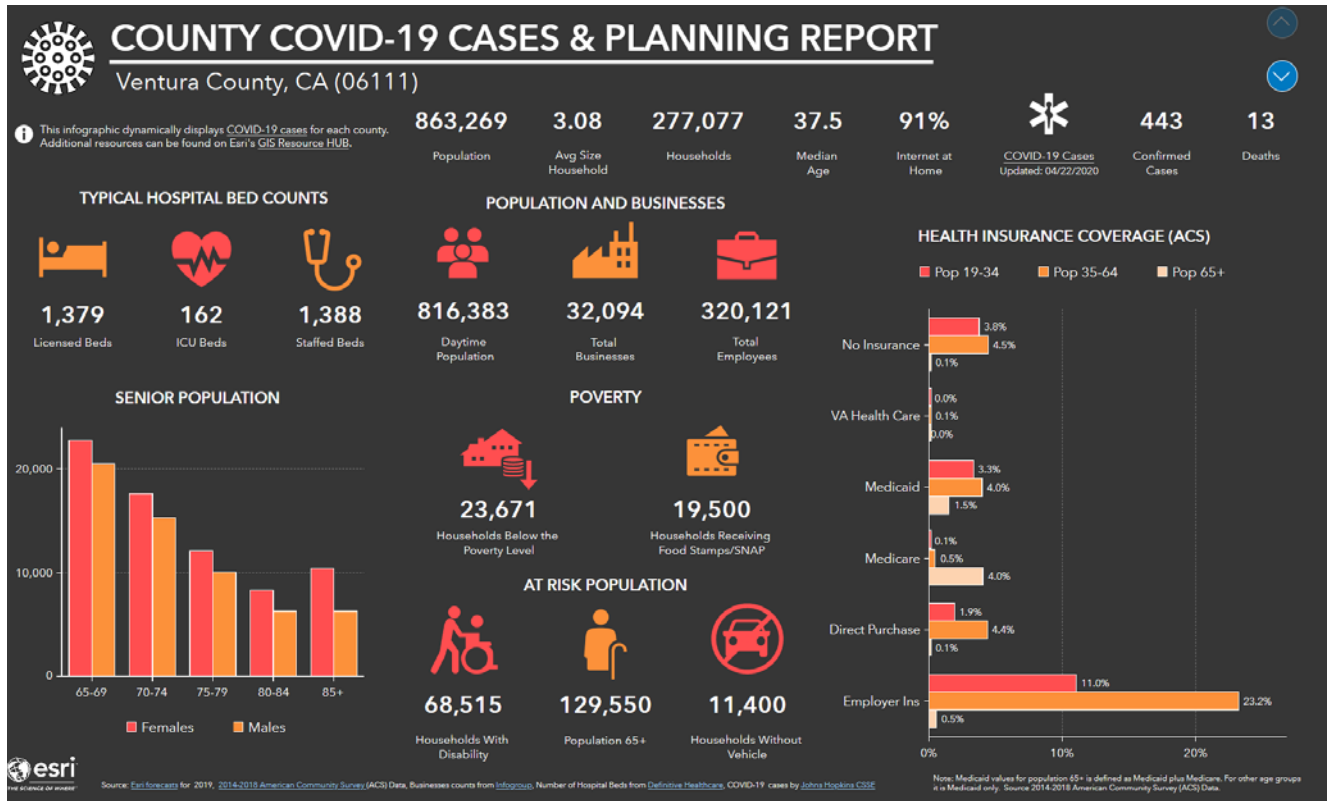


Ventura County

Estimated Population

848,112

<https://www.vcemergency.com/>



Health and Support

Coping with the Collision of Public Health Crises: COVID-19 and Substance Use Disorders

<https://directorsblog.nih.gov/2020/04/21/coping-with-the-collision-of-public-health-crises-covid-19-and-substance-use-disorders/>

Posttraumatic stress disorder (PTSD) Coach

the PTSD Coach app to help manage or reduce your PTSD symptoms, you also have access to a library of resources for any questions you may have. If you want to learn more about how PTSD develops, how common it is, and understanding treatment options, the PTSD Coach app is your on-the-go resource to answer it all.

<https://www.mobile.va.gov/app/ptsd-coach>

How Context, History Can Teach Leadership During Pandemic

https://www.governing.com/podcast/arena/How-Context-History-Can-Teach-Leadership-During-Pandemic.html?utm_term=LISTEN%20TO%20EPISODE&utm_campaign=Who%5Cu2019s%20in%20Charge%20Coronavirus%20and%20the%20Tenth%20Amendment&utm_content=email&utm_source=Act-On+Software&utm_medium=email

COVID-19 and Your Employees: Impacts on Leave and Benefits – presented by American Fidelity

Thursday, April 23, 2:00pm - 3:30pm

This virtual workshop will provide information on FFCRA paid time off and family medical leave as well as plan design considerations, HIPAA concerns, and retirement information. [REGISTER HERE](#) for this important webinar.

Self-Care Mini Series: Managing Time and Setting Boundaries

Tuesday April 28 at 2:00pm

This mental health webinar will give you tangible tips to help you manage your time and alleviate the stress that many have felt since the COVID-19 pandemic began.

[REGISTER HERE](#)

Bus Driver Safety and Wellness - presented by AJ Gallagher

Tuesday May 5 at 8am

[REGISTER HERE](#)

CSEBA Compliance Series: HIPAA 101

Thursday May 7 from 10:00am - 11:30am

This will be the first of the CSEBA Compliance Series discussing the critical importance for employees administering employer-sponsored health insurance to understand the core concepts and requirements of HIPAA. [REGISTER HERE](#)

EPIC Webinar - Psychological First Aid: Addressing Mental Health Distress During Disasters

Get the slides here or attached in Email

https://emergency.cdc.gov/epic/learn/2020/webinar_20200422.asp

Target Audience

- Public health professionals
- Administrators
- Emergency responders
- Program managers
- Certified health educators

<https://www.samhsa.gov/dtac>

or

<https://store.samhsa.gov>



Visit bit.ly/disasterapp to learn more.

SAMHSA

Weather

COVID-19 Weather Support

Issued:

1100 am April 20, 2020

NATIONAL WEATHER SERVICE
SAN DIEGO, CA

IMPACT SCALE

None Minor Moderate High Extreme

Resources

<https://www.weather.gov/spot/>
<https://inws.ncep.noaa.gov>
<https://www.wrh.noaa.gov/spx/event/dss-table.php>

(858) 675 - 8705
(24/7, Restricted)

Weather.gov/SanDiego

7-day forecast for Counties in far southwest CA

Period April 20 - April 27 (24-hr)	Orange	SW San Bernardino	All Deserts	Western Riverside	San Diego
Monday	Shower late	Scattered showers by evening	Windy	Few Showers evening	Scattered showers evening
Tuesday	NONE	Showers morning High mtn snow	Windy	Shower morning	Scattered showers morning
Wednesday	Warmer	Warmer	Warmer	Warmer	Warmer
Thursday	Warm	Warm	Warm	Warm	Warm
Friday	Warmer	Warmer	Very Warm	Warmer	Warmer
Saturday	Warm	Very warm	Very Warm	Very warm	Warm
Sunday	Warm	Warm	Very Warm	Warm	Warm
Monday	Warm	Warm	Very Warm	Warm	Warm

Forecast Discussion

Another smaller storm is expected to move through Monday night and Tuesday morning and bring scattered light showers and windy conditions for deserts. The coldest part of the storm will pass through Tuesday morning with a snow level near 7500 feet. A warming trend starts Wednesday. Temperatures should rise to above average through the week. Weak offshore flow for late this week and upper level high pressure will allow for additional warming to much above average levels. High temperatures will reach near record levels for inland areas with mid 90s for the Inland Empire and around 100 for the lower deserts.