



## Daily Situation Summary Wednesday, April 15, 2020 As of 10:00 AM

**Always check with trusted sources for the latest accurate information about novel coronavirus.**

- **World Health Organization**  
<https://www.who.int/>
- **Centers for Disease Control and Prevention**  
<https://www.cdc.gov/>
- **Food and Drug Administration**  
<https://www.fda.gov/emergency-preparedness-and-response/counterterrorism-and-emerging-threats/coronavirus-disease-2019-covid-19>
- **California Department of Public Health**  
<https://www.cdph.ca.gov/>
- **County Department/Public Health**  
<https://www.rivcoph.org/>
- **Residents in most counties can call 2-1-1**

### **This can't be real? Fact-checking resources.**

- Boom - <https://www.boomlive.in/>
- Snopes - <https://www.snopes.com/>
- FEMA - <https://www.fema.gov/coronavirus-rumor-control>
- WHO - <https://www.who.int/about/communications/cyber-security>

### **Need PPE?** - I have not vetted these sources

- 1Point3Acres - <https://coronavirus.1point3acres.com/ppe>
- Biotechnology Innovation Organization (BIO).  
The BIO Coronavirus Hub – [https://hub.bio.org/landing-page/community-home?mkt\\_tok=eyJpIjoiWW1FeFpqYzJPRFJrWWpKaSIsInQiOiJaS1ZpSWE2czZpdFwvUEtKbCsxUFZDK29MdzA2K3FMNTEyRDlocjJyMDJDN2FoRzR3RHxU1o3QTY2QWczdmdvbGlpcCRHZzUTI/EQ3ZUWklyZXFPmzdxQ0NFWU5EeFFjU0ZqWXBwT1wvQlZZVnk5IVTZPMldcL3NlbTJRXC96M042YWtOclAifQ%3D%3D](https://hub.bio.org/landing-page/community-home?mkt_tok=eyJpIjoiWW1FeFpqYzJPRFJrWWpKaSIsInQiOiJaS1ZpSWE2czZpdFwvUEtKbCsxUFZDK29MdzA2K3FMNTEyRDlocjJyMDJDN2FoRzR3RHxU1o3QTY2QWczdmdvbGlpcCRHZzUTI/EQ3ZUWklyZXFPmzdxQ0NFWU5EeFFjU0ZqWXBwT1wvQlZZVnk5IVTZPMldcL3NlbTJRXC96M042YWtOclAifQ%3D%3D)

# Quick Reference Sheet

## Global Update:

**Total cases:** 1,914,916 (71,572 new)

**Total deaths:** 123,010 ( 5,389 new)

More detail on page 3

## National Update:

**Total cases:** 554,849 (29,145 new)

**Total deaths:** 21,942 ( 1,456 new)

More detail on page 4

## State California Update:

**Total cases:** 22,348 ( 554 new)

**Total deaths:** 687 ( 36 new)

More detail on page 8

## Riverside County:

**Total cases:** 1,961

**Total deaths:** 50

More detail on page 11

## California Community Colleges Chancellor's Office (CCCCO)

More detail on page 13

## Resources & Training Opportunities

More detail on page 21

## Other Items of Note:

### Working on web dashboard options. More to come...

Test site only for ideas – requires Flash player, the full site reloads every 30 minutes, some content updates more often.

– Built for screen size 2560X1440 it will scale but it may not work as expected

<http://neptune.signage.me/WebService/SignagePlayerApp.html?eri=f7bee07a7e79c8f1d7951b4d24de4713c22f16&playerParams=157d9d758e0f050f9ab8a92fe9c8076689>

**Personal update I will be on vacation Thursday 4-16 or Friday 4-17 so there will not be a report on those days.**

**\*\*Extraordinary Assumptions: There are a lot of different data sources in this report not all of them match but aid to provide an overall picture of the current situation**

**COVID-19 Data Source Comparison - [https://covid-19.splunkforgood.com/covid\\_19\\_datasource\\_comparison](https://covid-19.splunkforgood.com/covid_19_datasource_comparison)**

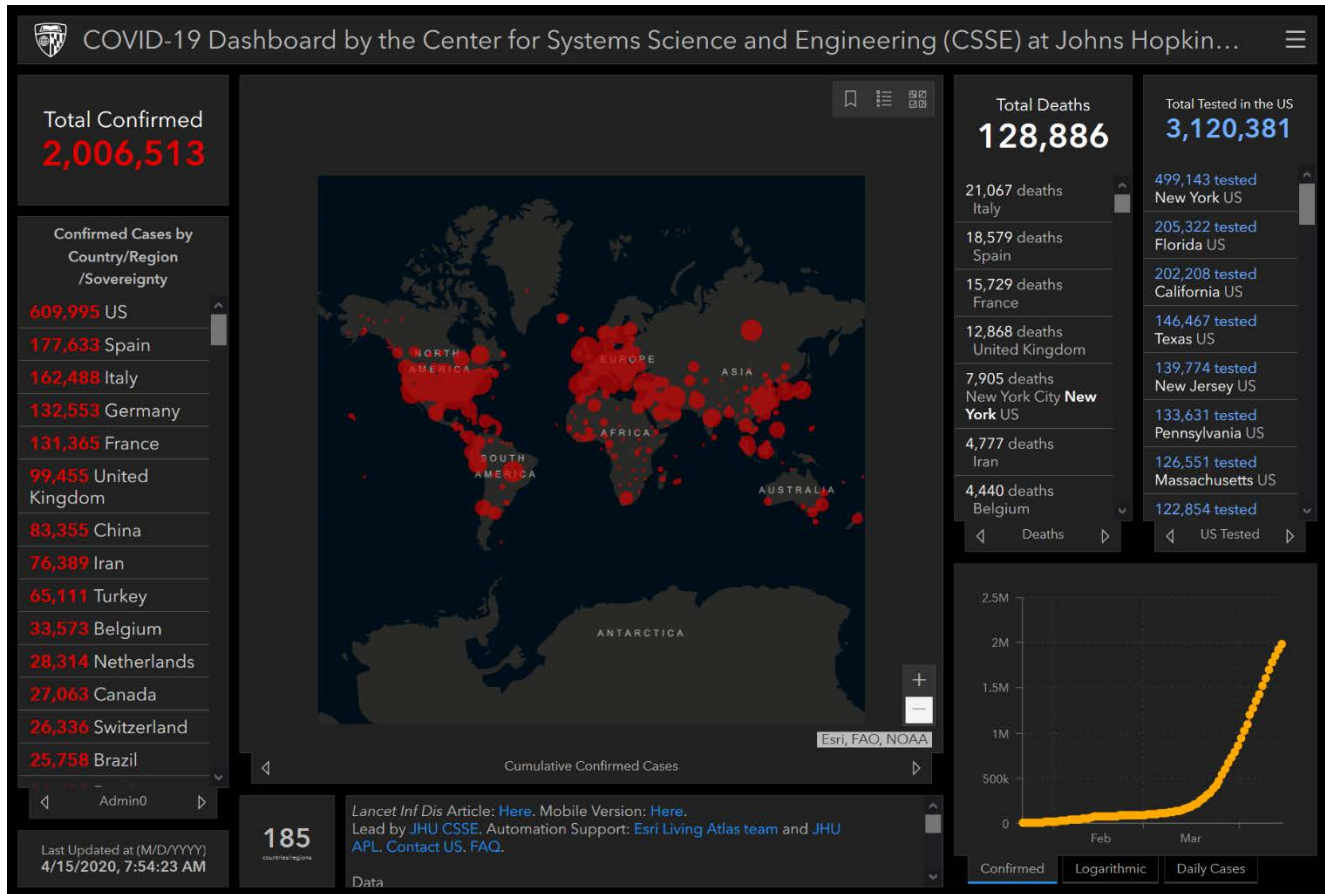
## Global Update:

Total cases: 1,914,916 (71,572 new)

Total deaths: 123,010 ( 5,389 new)

[https://www.who.int/redirect-pages/page/novel-coronavirus-\(covid-19\)-situation-dashboard](https://www.who.int/redirect-pages/page/novel-coronavirus-(covid-19)-situation-dashboard)

Globally, as of 2:00am CEST, 15 April 2020, there have been 1,914,916 confirmed cases of COVID-19, including 123,010 deaths, reported to WHO.



<https://coronavirus.jhu.edu/us-map>

## Global News Reports:

### Trump halts US funding to World Health Organization

[https://www.cnn.com/asia/live-news/coronavirus-pandemic-intl-04-15-20/h\\_502bfbdda88725980ffd25726f2986e5](https://www.cnn.com/asia/live-news/coronavirus-pandemic-intl-04-15-20/h_502bfbdda88725980ffd25726f2986e5)

### New Zealand's prime minister is taking a 20% pay cut for six months

- "Today, I can confirm that myself and government ministers and public service chief executives will take a 20% pay cut for the next 6 months, as we acknowledge New Zealanders who are reliant on wage subsidies, taking pay cuts, and losing their jobs as a result of the Covid-19 global pandemic," Ardern said at a news conference today. "While it in itself will not shift the government's fiscal position, it is about leadership and I acknowledge my colleagues both in the executive and also the colleagues we work with in the public service for the decision that was taken today."

[https://www.cnn.com/asia/live-news/coronavirus-pandemic-intl-04-15-20/h\\_9b6e90dcafb73cb266657637978f208e](https://www.cnn.com/asia/live-news/coronavirus-pandemic-intl-04-15-20/h_9b6e90dcafb73cb266657637978f208e)

## US Forces Japan declares public emergency for all of the country due to coronavirus

- The commander of the US Forces Japan (USFJ) has declared a public health emergency for all forces in the country amid the novel coronavirus outbreak, the USFJ said in a statement Wednesday

[https://www.cnn.com/asia/live-news/coronavirus-pandemic-intl-04-15-20/h\\_f73694aec5d20dae3837a65dca410980](https://www.cnn.com/asia/live-news/coronavirus-pandemic-intl-04-15-20/h_f73694aec5d20dae3837a65dca410980)

## China's wet markets are not what most people think they are

- Wet markets, as opposed to dry markets, which sell non-perishable goods such as grain or household products, are simply places that offer a wide range of fresh produce. Some, but not all, also sell live animals. They are referred to as "wet" owing to the fact that floors are often hosed down after vendors wash vegetables or clean fish.

<https://www.cnn.com/2020/04/14/asia/china-wet-market-coronavirus-intl-hnk/index.html>

[https://www.cnn.com/asia/live-news/coronavirus-pandemic-intl-04-15-20/h\\_17c009ff53f5db0b93720f40bb0d2801](https://www.cnn.com/asia/live-news/coronavirus-pandemic-intl-04-15-20/h_17c009ff53f5db0b93720f40bb0d2801)

## First person to be jailed in Australia for breaking coronavirus quarantine rules

- A 35-year-old Australian man has become the first person to be jailed in the country for breaching self-quarantine requirements after he was caught on several occasions, according to a statement by the Magistrates Court of Western Australia.
- Jonathan David was handed six-month and 14-day prison terms Wednesday on two counts of "failed to comply with a direction," and was ordered to serve one month of the sentences, while the rest would be suspended for one year.

[https://www.cnn.com/asia/live-news/coronavirus-pandemic-intl-04-15-20/h\\_1918c5686fae6de5f5a215340c0d3914](https://www.cnn.com/asia/live-news/coronavirus-pandemic-intl-04-15-20/h_1918c5686fae6de5f5a215340c0d3914)

## New Ebola case confirmed in the Democratic Republic of the Congo

- A new case of Ebola virus disease was confirmed today in the city of Beni in the Democratic Republic of the Congo (DRC).
- "While not welcome news, this is an event we anticipated. We kept response teams in Beni and other high risk areas for precisely this reason," said Dr Tedros Adhanom Ghebreyesus, WHO Director-General

<https://www.who.int/news-room/detail/10-04-2020-new-ebola-case-confirmed-in-the-democratic-republic-of-the-congo>

## National Update:

### Cases of COVID-19 Reported in the US, by Source of Exposure

**Total cases: 579,005 (24,156 new)**

**Total deaths: 22,252 ( 310 new)**

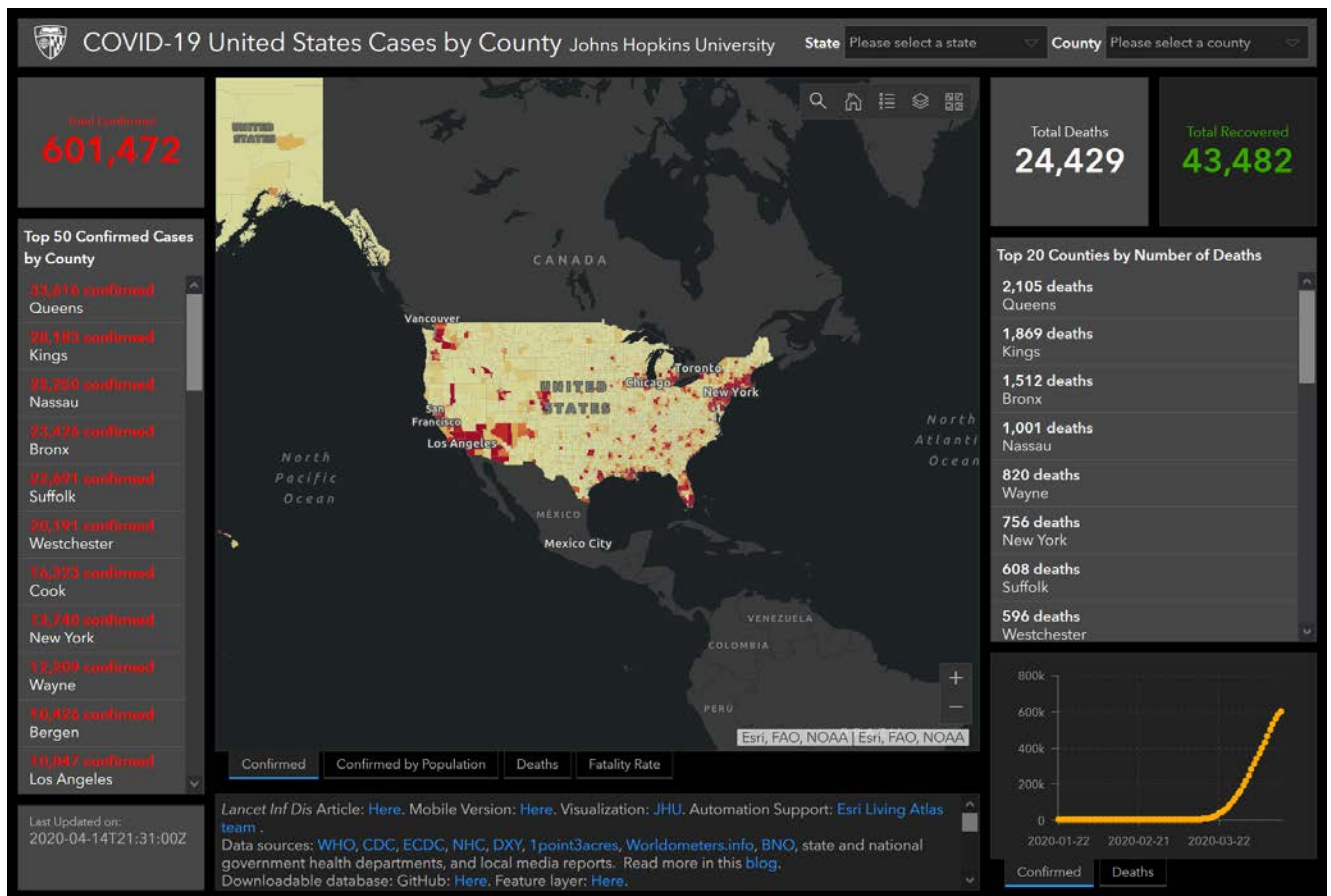
Numbers close out at 4 p.m. the day before reporting

<https://www.cdc.gov/coronavirus/2019-ncov/cases-updates/cases-in-us.html>

## COVID-19 Situation in the Region of the Americas as of 14 April 2020 (14:00 EST)

- In the Region of the Americas, an additional 30,734 cases and 1,866 deaths were reported in the past 24 hours – representing an 5% (cases) and 7% (deaths) relative increase compared to the previous day. Majority of the new cases (24,446 cases) and deaths (1,504) continue to be from the United States of America.

<https://www.paho.org/en/topics/coronavirus-infections/coronavirus-disease-covid-19>



<https://coronavirus.jhu.edu/us-map>

## FEMA - COVID-19 WHOLE-OF-AMERICA RESPONSE

FEMA, HHS, and our federal partners work with state, local, tribal and territorial governments to execute a whole-of-America response to COVID-19 pandemic and protect the health and safety of the American people. Even as FEMA is focused on responding to COVID-19, we are also preparing and maintaining readiness for other disasters to include spring flooding, severe weather and the upcoming hurricane season.

- FEMA continues to expedite movement of commercially pre-sourced and commercially procured critical supplies from the global market to medical distributors in various locations across the U.S. through Project Airbridge.
- **Food & Agriculture**
  - Emergent issues related to Mid-Atlantic Grocery Demand and Supply Networks Impacted by the COVID-19 Pandemic – PDF attached in Email
  - The fresh produce industry is struggling from food service and commercial market closures. These outlets account for approximately 40% of all produce consumed in the U.S. resulting in losses estimated at \$500+ million/week.



- o Meat plant closures or slow-downs will have significant regional and national implications for the meat supply. Livestock farmers are already reporting a backlog of animals unable to be slaughtered. Feed providers report increased demand for animal feed. Consumer demand has surged across all animal proteins and meat sales are 41% higher the week of April 5th this year than last. If there are prolonged plant closures, consumers may see higher prices and short term stockouts of certain proteins.
  - Georgia: There are reports of COVID-19 outbreaks at GA poultry plants. CDC field teams are working closely with these companies to prevent the closure of meat processing companies.
  - Closure of meat processing plant in South Dakota impacted hog growers in Minnesota. The state is currently working with processors to find solutions for hogs ready to go to market

- **Transportation**  
(Ground)

- o A sharp and sustained drop in trucking volume as a result of declining demand could have significant effects on the industry as in certain markets there are more drivers available than freight to haul. As drivers exit the market due to lack of work, when demand returns, the driver pool will be smaller which could lead to longer lead times, less freight volume, and prolonged stockouts.

(Mass Transit and Passenger Rail)

- o Massachusetts: Amtrak Downeaster suspended service thru 30 APR 20. The Massachusetts Bay Transportation Authority (MBTA) system is currently carrying 8.5 percent of its typical ridership and the peak commuting times have shifted to align with shift changes at health care facilities. MBTA is expecting the coronavirus pandemic to account for a \$231M deficit in its revenue forecast.

(Maritime Transportation)

- o Washington State ferries continue to see a decline in ridership (75 percent reduction), these lines will continue operations under their winter schedule until June.

## COVID-19 Update



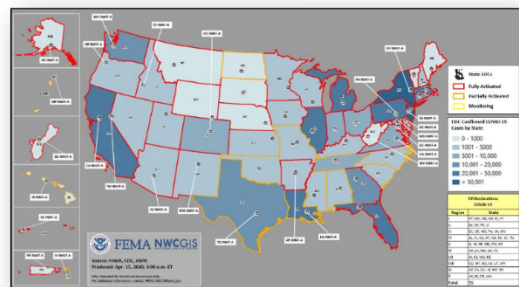
**Situation:** FEMA, HHS, and federal partners are working with state, local, tribe, and territorial governments to execute a whole-of-America response to the COVID-19 pandemic. The federal government is coordinating the deployment of PPE and ventilators from multiple sources including SNS, donations, and vendor procurements. These shipments are being sent nationwide with prioritization given to areas in greatest need.

**State / Local Response:**

- All State / Territory EOCs activated
- 42 states, D.C., 4 territories and 37 tribes issued shelter-in-place orders

**FEMA / Federal Response:** (COVID-19 SLB, Apr 14)

- NRCC: Level I in unified effort with HHS SOC; all RRCCs activated
- IMAT-A teams deployed to 26 states; LNOs deployed to 37 states, territories, and tribes
- 55 Major Disaster Declarations approved
- 2,950 (-2) FEMA employees deployed to support COVID-19 Response
- Project airbridge flight #38 landed in Los Angeles; cargo: 698,590 gowns; flight #39 landed in Chicago; cargo: 16,230,000 gloves; flight #40 landed in Chicago; cargo: 10K gowns; flight #41 landed in NYC; cargo: 4,080,000 gloves; flight #42 landed in Los Angeles; cargo: 49,140 gowns on April 13
- 4.8M of the 10M DoD supplied N95 masks have been delivered to interim distribution centers
- 89,187 (+2,085) (19% positive, 79% negative, 0.7% indeterminate) cumulative tested since March 23 at CBTS locations
- 92,707 tests processed since March 23 with 18,020 positive, 709 indeterminate, 73,977 negative
- USNS Comfort to receive Expeditionary Medical Force-1 augmentation
- USNS Mercy to provide medical personnel support for 100 beds in a local facility (COVID+ treatment) and provide 250 beds (non-COVID) afloat



COVID-19 Cases	Confirmed	Deaths
United States	602,510 (+25,520)	24,462 (+1,089)
Worldwide	1,844,863 (+71,799)	117,021 (+5,369)

(COVID-19 Response update, as of Apr 14)

## National, State & Local News Reports:

### **American Medical Association calls Trump's move to put a hold on WHO funding "dangerous"**

- The largest professional association of physicians in the US, the American Medical Association, labeled President Donald Trump's announcement that he will put a hold on funding for the World Health Organization as "dangerous."

[https://www.cnn.com/asia/live-news/coronavirus-pandemic-intl-04-15-20/h\\_b7aa23f680d2c5edbd49d495105bf545](https://www.cnn.com/asia/live-news/coronavirus-pandemic-intl-04-15-20/h_b7aa23f680d2c5edbd49d495105bf545)

### **More people are leaving New York hospitals than arriving, doctor says**

- Dr. Craig Smith of the New York-Presbyterian/Columbia University Irving Medical Center also said the number of patients in the Intensive Care Unit and on ventilators appears to be leveling off at two hospitals that are bearing the brunt of those cases.

[https://www.cnn.com/asia/live-news/coronavirus-pandemic-intl-04-15-20/h\\_f8f7c52caedf0508db1e794ca7fb8fa6](https://www.cnn.com/asia/live-news/coronavirus-pandemic-intl-04-15-20/h_f8f7c52caedf0508db1e794ca7fb8fa6)

### **Los Angeles files 10 prosecutions of businesses not complying with health order**

- The Los Angeles Police Department has reported 79 businesses for violating the order to the city attorney for criminal prosecution since the order was put in place, according to the mayor's office.

[https://www.cnn.com/asia/live-news/coronavirus-pandemic-intl-04-15-20/h\\_1c931b2c9b45b2a254f877280db2c436](https://www.cnn.com/asia/live-news/coronavirus-pandemic-intl-04-15-20/h_1c931b2c9b45b2a254f877280db2c436)

<https://www.latimes.com/california/story/2020-04-14/10-more-businesses-face-charges-for-violating-garcettis-coronavirus-order-to-close>

### **Utah governor says he will decide when to reopen, not the federal government**

- Utah's Republican Gov. Gary Herbert said policies to reopen states will be put in place mainly by the states and governors, and not the federal government, at a news conference Tuesday.
- "I'm a 10th amendment guy and power is not given to the federal government under our constitution; it remains with the states and the people," he said.

[https://www.cnn.com/asia/live-news/coronavirus-pandemic-intl-04-15-20/h\\_ef8d250fc66a85caa3457735932e4155](https://www.cnn.com/asia/live-news/coronavirus-pandemic-intl-04-15-20/h_ef8d250fc66a85caa3457735932e4155)

### **FBI warns companies of employees faking coronavirus test results**

- As US companies struggle to remain in operation amid the coronavirus pandemic, the FBI is warning that American businesses now have something else to worry about: fraud by employees seeking to take advantage of the pandemic.
- An alleged scam cost a company \$175,000: The FBI report described an incident in March where an employee working for an unidentified "critical manufacturing company" told their bosses they had tested positive for Covid-19 and submitted what appeared to be documentation from a medical facility.
- "In response, the company shut down the affected manufacturing facility to disinfect the location, ceasing production and halting delivery of necessary materials to the plant," the FBI report stated. "The company notified all

employees at the facility, including four workers who had close contact with the reportedly infected employee and were required to self-quarantine.”

[https://www.cnn.com/asia/live-news/coronavirus-pandemic-intl-04-15-20/h\\_652da4f8146ba9cc01a241771ac9c6b9](https://www.cnn.com/asia/live-news/coronavirus-pandemic-intl-04-15-20/h_652da4f8146ba9cc01a241771ac9c6b9)

<https://www.cnn.com/2020/04/14/politics/fbi-warning-fake-coronavirus-test-results/index.html>

## **New research makes the case for coronavirus testing of all admitted pregnant patients**

- Two hospitals tested all pregnant patients for coronavirus. Here's what they found.. most of the pregnant women in New York who tested positive for the novel coronavirus were asymptomatic when they delivered, according to a letter published in the New England Journal of Medicine.

[https://www.cnn.com/asia/live-news/coronavirus-pandemic-intl-04-15-20/h\\_68df05d2db97640d0a6a5180526b2d5b](https://www.cnn.com/asia/live-news/coronavirus-pandemic-intl-04-15-20/h_68df05d2db97640d0a6a5180526b2d5b)

<https://www.cnn.com/2020/04/15/health/pregnant-patients-asymptomatic-coronavirus-testing/index.html>

## **FEMA announces funding notice for Emergency Management Performance Grant Supplemental Allocation**

- The Department of Homeland Security and FEMA are announcing the funding notice for an additional \$100 million in supplemental Emergency Management Performance Grant Program funds.
- The money is available to all 50 states, five territories and the District of Columbia as part of the Coronavirus Aid, Relief, and Economic Security (CARES) Act. All applications must be submitted by April 28. Through EMPG, states and territories can make subawards to their local and tribal governments. The funds are used to assist these governments in their public health and emergency management activities supporting prevention of and response to the ongoing COVID-19 pandemic.

<https://www.fema.gov/news-release/2020/04/14/fema-announces-funding-notice-emergency-management-performance-grant>

- Proposed Mitigation Grant Program Policy for Public Comment – PDF attached in Email

## **CA – DMV Extends All Expiring Driver Licenses**

PDF attached in Email

## **Governor Newsom Outlines Six Critical Indicators the State will Consider Before Modifying the Stay-at-Home Order and Other COVID-19 Interventions**

<https://www.gov.ca.gov/2020/04/14/governor-newsom-outlines-six-critical-indicators-the-state-will-consider-before-modifying-the-stay-at-home-order-and-other-covid-19-interventions/>

Presentation PDF in Email



# State California Update:

## COVID-19 in California by the Numbers

**Total cases: 2,338**  
**Total deaths: 758**

Note: The following numbers reflect information received from local health jurisdictions as of 2 p.m. PDT. More current numbers may be available from local health jurisdictions.

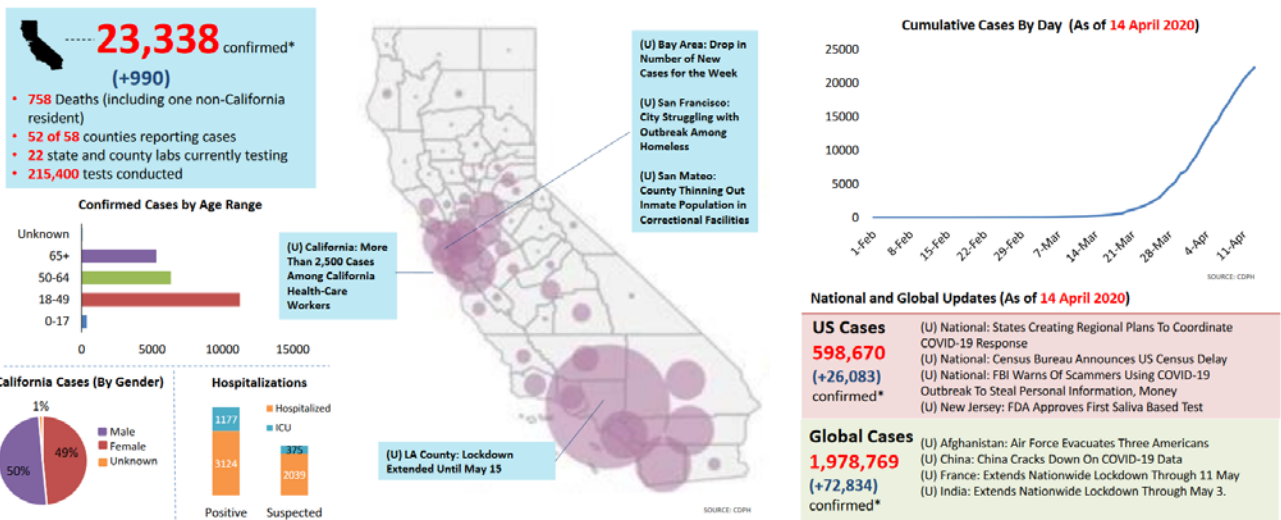
<https://www.cdph.ca.gov/Programs/CID/DCDC/Pages/Immunization/nCoV2019.aspx>



### (U) CALIFORNIA IMPACTS: CORONAVIRUS DISEASE 2019 (COVID-19)

(U//FOUO) As of 14 April, cases of COVID-19 continue to increase, totaling more than 23,000 cases and 758 deaths in California. A large homeless shelter in San Francisco is experiencing an outbreak with approximately 70 individuals testing positive. Nationally, confirmed COVID-19 cases increased to more than 598,000, with more than 25,000 deaths. Several states on the East and West coasts are creating regional plans to safely reopen their economies when conditions permit. Globally, the number of confirmed cases approaches 2 million, with more than 125,000 deaths. The Chinese government is reportedly beginning to crack down on internal reporting, including medical studies and other research, as the government begins to reopen regions most impacted by COVID-19.

### California Updates (As of 14 April 2020)



## Testing Data

State	Positive	Negative	Pending	Total Tests (Population)
-------	----------	----------	---------	--------------------------

CA ⓘ	23,338 10.8%	192,062	13,200	228,600 (39,512,223)
------	-----------------	---------	--------	-------------------------

Test Locations:

- San Francisco
- Palo Alto
- Hayward
- San Jose
- San Mateo
- Lake Elsinore
- Sacramento
- Martinez
- San Fernando Valley
- L.A. city
- L.A. city
- L.A. city
- L.A. city
- L.A. city
- Los Angeles
- Los Angeles
- Los Angeles
- L.A. city
- L.A. city
- L.A. city
- Fremont
- El Centro
- Calexico
- San Joaquin

<https://coronavirus.1point3acres.com/en/test?state=CA>

# Local SOCAL County Updates:

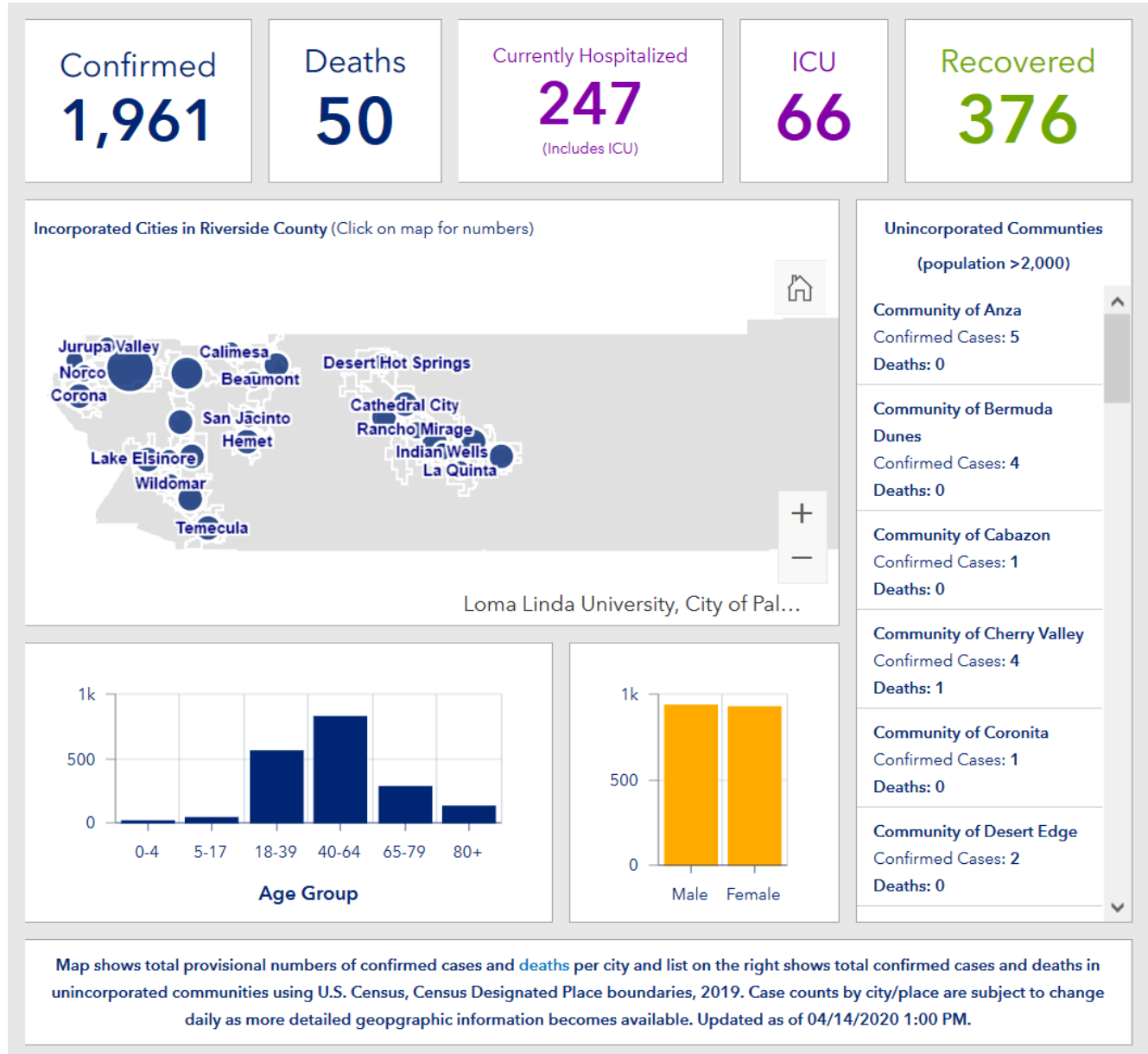
## Riverside County:

### COVID-19 by the Numbers

Total cases: 1,961  
 Total deaths: 50  
 Estimated Population: 2,424,790

<https://www.rivcoph.org/>

<https://www.rivcoph.org/coronavirus>



## Other Local County Links

### San Luis Obispo County:

<https://www.emergencyslo.org/en/covid19.aspx>

### Kern County:

<https://kernpublichealth.com/2019-novel-coronavirus/>

### Santa Barbara County:

<https://publichealthsb.org/>

<https://publichealthsb.org/dashboard/>

### Ventura County

<https://www.vcemergency.com/>

### Los Angeles County:

<http://publichealth.lacounty.gov/media/Coronavirus/>

### Orange County:

[https://www.ochealthinfo.com/phs/about/epidasmt/epi/dip/prevention/novel\\_coronavirus](https://www.ochealthinfo.com/phs/about/epidasmt/epi/dip/prevention/novel_coronavirus)

### San Bernardino County:

<http://wp.sbcounty.gov/dph/coronavirus/>

### Imperial County:

<http://www.icphd.org/health-information-and-resources/healthy-facts/covid-19>

<https://www.arcgis.com/apps/opsdashboard/index.html#/684c52c01a0c4dbda380d7b905ef0b46>

### San Diego County:

[https://www.sandiegocounty.gov/content/sdc/hhsa/programs/phs/community\\_epidemiology/dc/2019-nCoV/status.html](https://www.sandiegocounty.gov/content/sdc/hhsa/programs/phs/community_epidemiology/dc/2019-nCoV/status.html)

## Education Updates:

### California Department of Education (CDE)

<https://www.cde.ca.gov/ls/he/hn/coronavirus.asp>

### Riverside County Office of Education (RCOE)

<https://www.rcoe.us/>

Established a website at: <https://www.rcoe.us/coronavirus/>

Educational Resources for Remote Learning:

<https://www.rcoe.us/educational-services/educational-resources-remote-learning/>

Accessing Head Start and Early Head Start Services and Resources During Center and Office Closures

<https://www.rcoe.us/early-learning-services/head-start-early-head-start-programs/accessing-services-resources/>

## California Community Colleges Chancellor's Office (CCCCO)

- Established a website for COVID-19:  
<https://www.cccco.edu/About-Us/Chancellors-Office/Divisions/Communications-and-Marketing/Novel-Coronavirus>
- Wednesday, April 22  
Please join our Virtual Town Hall  
9:00 – 10:30 AM  
Register to view at:  
[https://cccconfer.zoom.us/webinar/register/WN\\_QGajoM6pSSOVf6QNWTvKug](https://cccconfer.zoom.us/webinar/register/WN_QGajoM6pSSOVf6QNWTvKug)

California Community Colleges Chancellor's Office webinar transcript attached in email.

## Webinar Agenda

1. **System Updates** by Chancellor Eloy Ortiz-Oakley
2. **CDPH and Communications Updates** by Paul Feist, Vice Chancellor of Communications
3. **BRN Amended Guidance Memo** by Sheneui Weber, Vice Chancellor of Workforce and Economic Development
4. **CalWORKs and Correspondence Education Guidance Memos** by Marty Alvarado, Executive Vice Chancellor of Educational Services and Support
5. **CVC-OEI Resources** by Marty Alvarado, Executive Vice Chancellor of Educational Services and Support and Jory Hadsell, Executive Director, CVC-OEI
6. **Cares Act and Advocacy Day** by Lizette Navarette, Vice Chancellor of College Finance & Facilities Planning
7. **Chancellor's Office Updates and Work in Progress** by Daisy Gonzales, Deputy Chancellor
8. **Q&A Session**



2

[https://uscrossier.zoom.us/webinar/register/WN\\_yaPlo-6gRbOJBDQqPYIXmg](https://uscrossier.zoom.us/webinar/register/WN_yaPlo-6gRbOJBDQqPYIXmg)



PRESENTED BY THE CALIFORNIA COMMUNITY COLLEGES CHANCELLOR'S OFFICE AND THE CENTER FOR URBAN EDUCATION.

California Community Colleges

USC Rossier  
Center for Urban Education

# RACIAL EQUITY IN ONLINE ENVIRONMENTS

THIS SIX-PART WEBINAR SERIES WILL PROVIDE STRATEGIES FOR FACULTY AND ADMINISTRATORS TO EXERCISE AGENCY ON BEHALF OF THE MOST VULNERABLE STUDENTS

WEBINAR I 4.23.20	THE IMPORTANCE OF EQUITY-MINDED VIRTUAL PRACTICES DURING COVID19: A CONVERSATION WITH STUDENTS Registration Link: <a href="https://bit.ly/cuewebinar1">bit.ly/cuewebinar1</a>
WEBINAR II 4.30.20	EQUITY-MINDED ONLINE TEACHING: USING CANVAS AS A MODEL Registration Link: <a href="https://bit.ly/cuewebinar2">bit.ly/cuewebinar2</a>
WEBINAR III 5.7.20	BEING AWARE OF LEARNING CONSTRAINTS POSED BY ONLINE TEACHING AND MOVING TOWARDS ANTI-RACIST PRACTICES Registration Link: <a href="https://bit.ly/cuewebinar3">bit.ly/cuewebinar3</a>
WEBINAR IV 5.14.20	ONLINE SUPPORT AS AN ANTI-RACIST PRACTICE Registration Link: <a href="https://bit.ly/cuewebinar4">bit.ly/cuewebinar4</a>
WEBINAR V 5.21.20	EQUITY-MINDED MATHEMATICS INSTRUCTION Registration Link: <a href="https://bit.ly/cuewebinar5">bit.ly/cuewebinar5</a>
WEBINAR VI 5.21.20	HOW TO EXPRESS CARE WITH A FOCUS ON RACIAL EQUITY Registration Link: <a href="https://bit.ly/cuewebinar6">bit.ly/cuewebinar6</a>

\*ALL WEBINARS  
12:00 – 1:30PM

[RSOECUE@USC.EDU](mailto:RSOECUE@USC.EDU) [CUE.USC.EDU](http://CUE.USC.EDU)

## Communications Update

- Over 90 participants in student media news conference Wednesday with Chancellor Oakley and EVC Marty Alvarado.
- SDUT Op-ed “Don’t let California’s community college system be devastated by the coronavirus recession.”
- 4 million digital impressions last for Census 2020 community college campaign, with 86,326 click throughs.
- 3 million digital impressions last week for Stay Enrolled; Succeed Online last week with 45,711 click throughs.



7

## Update on BRN Clinical Hours

- 1) **BRN Waivers on 75 Percent Nursing clinical hours in direct patient care**
  - New Clinical setting must be approved by a Nurse Education Consultant (NEC)
  - Written agreements for clinical sites no longer required
  - **Mental health/psychiatric nursing, obstetrics, and pediatrics** 75% direct patient care clinical hours reduced to 50%
  - **Geriatrics and medical-surgical** 75% of clinical hours in direct patient care subject to the following conditions



## Update on BRN Clinical Hours

- 2) **Alternative Options for 75 Percent Clinical Hours in Direct Patient Care** – telehealth, work with elders in community, volunteering through Healthcare Corps.
- 3) **NCLEX Testing** – <https://home.pearsonvue.com/nclex/essential-services> for updated information
- 4) **Essential Personnel Guidance** - includes workers/instructors supporting academies, training facilities and courses for the purpose of graduating students and cadets that comprise all identified critical infrastructure sectors





## CalWORKs Program: Clock Suspension

- Governor's Executive Order N-29-20
  - suspends all state law requiring re-determination of benefits for CalWORKs recipients for 90 days
  - Suspends any month or partial month from counting against the 48-month time limit
- Federal time limits remain in effect and may impact student eligibility



11

## CalWORKs Program: Child Care Funding

- Senate Bill 117 ensures the continuity of payments for state-subsidized child care programs during the COVID-19 emergency
- Child Development Centers may claim CalWORKs child care reimbursements for up to 30 days
- Providers serving families utilizing CalWORKs stage One, Two, or Three must be reimbursed using the most recent monthly invoice or attendance record or total certified authorizations both part-time & full-time



12

## CalWORKs Program: Work Study

- CalWORKs work study is approved to continue through June 30, regardless of whether students are unable to work due to COVID-19
- Colleges should ensure that lost wages prior to this guidance is paid to student whose work study was impacted by COVID-19
- Colleges may only pay students the 75% share of work study wages and should encourage employers to continue to pay their agreed upon portion of wages
- Colleges should ensure that all work study payments will continue to be paid directly to students and should transition to paying students directly if an employer is unable to issue payment



13

# Correspondence Education: Policy Background

- Correspondence education is an alternative delivery method that is recognized by the U.S Department of Education as different than distance education
- Correspondence education was recently removed from the distance education regulations to align with the federal definition
- Correspondence education regulations are currently in development in partnership with the statewide curriculum committee, 5C



14

## Correspondence Education: Federal Definition

Correspondence education means education provided through one or more courses by an institution under which the institution provides instructional materials, by mail or electronic transmission, including examinations on the materials, to students who are separated from the instructor. Interaction between the instructor and student is limited, is not regular and substantive, and is primarily initiated by the student. Correspondence courses are typically self-paced. Correspondence education is not distance education.



15

## Correspondence Education: Defining Characteristics

### Correspondence Education

- Delivered asynchronously
- Will not include peer-to-peer interactions
- Primarily student-paced
- Limited student and instructor interactions

### Distance Education

- Delivered either asynchronously or synchronously
- Require peer-to-peer interactions
- Primarily instructor-paced
- Required to maintain substantive student and instructor interactions



16

## Correspondence Education: College Obligations

- Colleges should ensure effective asynchronous instructor/student contact that supports a progression of learning
- Students in a correspondence education course should have access to student supports including counseling, library services, research assistance, and tutoring support
- Colleges should ensure adequate supports for students with disabilities enrolled in correspondence education



17

## Correspondence Education: Transitioning to Correspondence Education

- Colleges should clarify which courses, if any, will transition to a correspondence education delivery method
- Colleges should ensure a locally approved course addendum is completed for any course transitioning to correspondence education
- Colleges should track programs that may convert to more than 50% correspondence education and submit a substantive change approval from ACCJC



18

## College Resources

- Redesigned resources website; information organized by user
- Tier 1, 24/7 phone Canvas support for all colleges
- *Getting Started in Canvas* faculty resources
- Online student services tools matrix
- Weekly faculty drop-in hours with instructional designers
- Free webinars and online training opportunities at [cvc.edu/events](http://cvc.edu/events)



19



## Student Resources

- Online readiness videos
- Canvas tutorials
- Low-cost Internet options
- Coming soon:
  - Health and wellness resources
  - Student-to-Student tips
  - URL [cvc.edu/keeplearning](http://cvc.edu/keeplearning)

### Preparing for Online Learning

Online courses allow you to learn whenever, wherever, and however works best for you, making it easier to earn your degree or certificate while balancing work and family commitments. And without having to attend classes in person, online learning lets you access programs and courses that might have otherwise been inaccessible or highly inconvenient.

Online classes can present unique challenges, however, if you're not prepared. But if you develop skills for effective online learning, you'll find the courses can be an excellent alternative to a traditional classroom setting.

### Online Readiness Videos

This may be your first time taking an online course. The California Community Colleges have developed a series of videos that address the real challenges experienced by online students, new and experienced, while pursuing success in online classes.



### Getting Started with Canvas

The California Community Colleges (CCC) have adopted Canvas as the system's Common Course Management System (CCMS). This means that even if you take a class at more than one CCC, you will use the same platform.



20

## DSPS Resources

- Per Title Five, content must be accessible.
- CVC-OEI Course Design Rubric has accessibility requirements embedded in all sections.
  - FREE *Designing for Accessibility* self-paced course.
  - Course Design Resources focused specifically on accessibility.
- Students may need to be re-assessed for services
  - DSPS departments can utilize Cranium Café for online appointments and scheduling.
- Ally by Blackboard integration with Canvas for accessibility support and content remediation; includes alternate media formats.



21

## Centrally-Funded Services

Make sure your college takes advantage of centrally-funded services:

- Ally (Blackboard), *online accessibility support*
- Cranium Café (ConexEd), *online student services platform*
- Labster, *virtual science lab platform*
- NetTutor (Link Systems International), *online tutoring*
- Proctorio, *online proctoring platform*

Contact [support@cvc.edu](mailto:support@cvc.edu) to install.



22

# Regular Effective Contact & Interaction

- Title Five § 55204. Instructor Contact applies to all courses taught online.
- The CVC-OEI Course Design Section B focused on instructor contact and student-to-student contact.
- Also available in the *Faculty: Keep Learning* tab:
  - Facilitated online courses
  - Pocket PD Guides
  - Articles, webinar archives and video tutorials

## Section B: Interaction - Instructor Contact

Incomplete	Aligned	Additional Exemplary Elements
<b>B1: Pre-Course Contact</b>		
<input type="checkbox"/> Instructor does not initiate contact prior to or at the beginning of the course.	<input type="checkbox"/> Instructor initiates contact prior to or at the beginning of course.	<input type="checkbox"/> Instructor provides multiple resources to help students successfully start the course.
<b>B2: Regular Effective Contact</b>		
<input type="checkbox"/> The course design appears to be lacking opportunities for regular effective student contact initiated by the instructor.	<input type="checkbox"/> The course design includes regular instructor-initiated contact with students using CMS communication tools.	<input type="checkbox"/> The course design includes ample opportunities for regular effective contact using a wide variety of communication tools.
<b>B3: Student-Initiated Contact</b>		
<input type="checkbox"/> Instructor contact information, including expected response times, is missing or not easy to find.	<input type="checkbox"/> Students are encouraged to initiate contact with the instructor through easily accessed contact information that includes expected response times.	<input type="checkbox"/> Students are provided with multiple means of contacting the instructor and are encouraged to do so throughout the course.



## CARES Act – Federal Stimulus

### Higher Education Emergency Relief Fund

- Institutional awards are calculated using **75%** of full-time enrollment of Pell recipients at an institution, and
- **25%** of the institutional award is calculated using full-time enrollment of non-Pell recipients. (Students who were exclusively online prior to the pandemic are not included in this calculation.)
- Broad flexibility will be provided for the use of these funds, but colleges will be required to use not less than 50% of funds for emergency grants to students.



## CARES Act – Distribution of 1<sup>st</sup> Half

### Higher Education Emergency Relief Fund

- On April 9, the U.S. Secretary of Education announced half of Higher Education Emergency Relief Fund would be distributed immediately to colleges to provide direct emergency assistance to students.
- The first allocation of CARES Act dollars (\$6 billion) is designated for emergency assistance to students.
- Funds will go directly to institutions through the Title IV distribution system.
- **The CARES Act provides institutions with significant discretion on how to award this emergency assistance to students.**





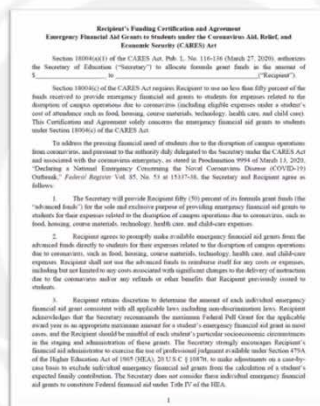
# Funds for California Community Colleges

	Funds for Emergency Assistance to Students	Funds for Direct Assistance to Colleges	TOTAL
California Community Colleges Total	\$289,839,564	\$289,839,514	\$579,679,078
All funds are one-time only.			



## CARES Act – Certificate of Agreement

- Colleges must complete a Certificate of Agreement and submit it to USDE
- Each institution may develop its own system and process for determining how to allocate these funds.
- Recipient shall report to the Secretary thirty (30) days from the date of this Certification and Agreement and every forty-five (45) days thereafter in accordance with 2 CFR 200.333 through 2 CFR 200.337:
  - how grants were distributed to students,
  - the amount of each grant awarded to each student,
  - how the amount of each grant was calculated, and
  - any instructions or directions given to students about the grants
- Document that Recipient has continued to pay all of its employees during the period of any disruptions or closures to the greatest extent practicable



## CARES Act – Forthcoming Guidance

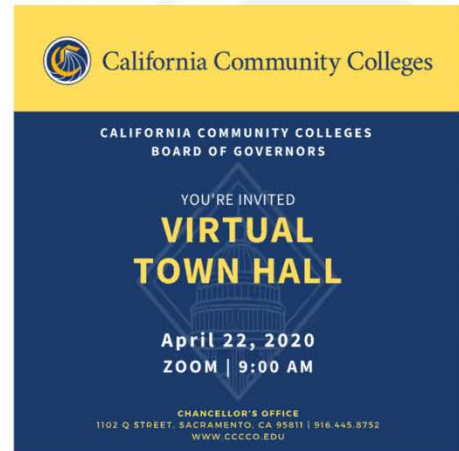
### Questions we are still analyzing

- Are there prohibitions on which students receive emergency direct assistance?
- Should reporting be completed by college or by district?
- When will the 50% institutional assistance dollars be released?
- Are there any additional prohibitions on the 50% institutional dollars beyond pre-enrolment recruitment, endowments, athletics?



# Next Week: Virtual Advocacy Town Hall

- Wednesday, April 22: **Virtual Advocacy Day**
- Please join our Virtual Town Hall
  - **9:00 – 10:30 AM**
  - Register to view at:  
[https://cccconfer.zoom.us/webinar/register/WN\\_QGajoM6pSSOVf6QNWTvKug](https://cccconfer.zoom.us/webinar/register/WN_QGajoM6pSSOVf6QNWTvKug)
- Takes the place of regularly scheduled scheduled COVID-19 Weekly Webinar



29

## Chat Box Q & A

California Community Colleges faculty, staff, and administrators will find resources and information within the Vision Resource Center and the recording of this webinar. Visit [visionresourcecenter.cccco.edu](http://visionresourcecenter.cccco.edu) for additional responses to webinar questions.

After logging in, under the “Connect” menu, visit “All Communities” and look for the “CCC | COVID-19 Resources, Tools, and Discussion.” Select the community and then click “Join Community” to access the content.



34

## Resources & Training Opportunities

### Welcome to OpenWHO OpenWho.gov – Training

- OpenWHO is WHO's new interactive, web-based, knowledge-transfer platform offering online courses to improve the response to health emergencies. OpenWHO enables the Organization and its key partners to transfer life-saving knowledge to large numbers of frontline responders.

<https://openwho.org/>

## CDC

### COVID-19 ASL Videos

<https://www.youtube.com/playlist?list=PLvvp9iOILTQatwnqm61jqFrSfUB4RKh6J>

### CDC COVID-19 Videos

<https://www.youtube.com/playlist?list=PLvvp9iOILTQaJa78zFQ0QgyShQ2HEwHxP>

### CDC Communication Resources

<https://www.cdc.gov/coronavirus/2019-ncov/communication/index.html>

### CDC Press Materials

<https://www.cdc.gov/media/pressmaterials.html>

## California Community Colleges

### California Virtual Campus

<https://cvc.edu/about-the-oei/resources/>

<https://cvc.edu/events/>

<https://cvc.edu/keeplearning/>

### CCC Accessibility Center

<https://cccaccessibility.org/>

### Please join our Virtual Town Hall

Wednesday, April 22, 9:00 – 10:30 AM

Register to view at:

[https://cccconfer.zoom.us/webinar/register/WN\\_QGajoM6pSSOVf6QNWTvKug](https://cccconfer.zoom.us/webinar/register/WN_QGajoM6pSSOVf6QNWTvKug)

# Regional Weather

## COVID-19 Weather Support

**Issued:**

**1100 am April 14, 2020**



NATIONAL  
WEATHER SERVICE  
SAN DIEGO, CA



### IMPACT SCALE



### Resources

<https://www.weather.gov/spot/>  
<https://inws.ncep.noaa.gov>  
<https://www.wrh.noaa.gov/sgx/event/dss/table.php>

**(858) 675 - 8705**  
**(24/7, Restricted)**



**Weather.gov/SanDiego**

## 7-day forecast for Counties in far southwest CA

Period April 14 - April 21 (24-hr)	Orange	SW San Bernardino	All Deserts	Western Riverside	San Diego
Tuesday	Breezy Mtn Warmer	Windy in and near passes Warmer	Warmer	Breezy Warmer	Warmer Breezy in mountains
Wednesday	Warmer	Warmer	Warm	Warmer	Warmer
Thursday	Cooler	Cooler	Warm	Cooler	Cooler
Friday	Showers	Cooler Showers	Cooler Windy	Cooler Showers	Showers
Saturday	Shower	Showers morning	Shower Breezy	Showers morning	Showers morning
Sunday	NONE	NONE	NONE	NONE	NONE
Monday	Shower	Showers	NONE	Showers	Shower
Tuesday	NONE	NONE	NONE	NONE	NONE

### Forecast Discussion

Generally a dry weather pattern will take over with warming into Wednesday. A weak to moderate Santa Ana wind will occur in mountain passes into Tuesday evening. A slow moving Pacific weather system is expected to approach on Thursday bringing cooler weather and it will move through southern California on Friday, April 17, The strength of storm appears to be weak therefore precipitation could be light except for isolated heavier showers.. Another smaller storm is possible for Monday April 20.