

Daily Situation Summary

Friday, April 10, 2020

As of 10:00 PM



Always check with trusted sources for the latest accurate information about novel coronavirus.

- **World Health Organization**
<https://www.who.int/>
- **Centers for Disease Control and Prevention**
<https://www.cdc.gov/>
- **Food and Drug Administration**
<https://www.fda.gov/emergency-preparedness-and-response/counterterrorism-and-emerging-threats/coronavirus-disease-2019-covid-19>
- **California Department of Public Health**
<https://www.cdph.ca.gov/>
- **County Department/Public Health**
<https://www.rivcoph.org/>
- **Residents in most counties can call 2-1-1**

This can't be real? Fact-checking resources.

- Boom - <https://www.boomlive.in/>
- Snopes - <https://www.snopes.com/>
- FEMA - <https://www.fema.gov/coronavirus-rumor-control>
- WHO - <https://www.who.int/about/communications/cyber-security>

Need PPE? - <https://coronavirus.1point3acres.com/ppe> I have not vetted this source.

Quick Reference Sheet

Global Update:

Total cases: 1,521,252 (41,775 new)

Total deaths: 92,798 (2,344 new)

More detail on page 3

National Update:

Total cases: 427,460 (32,449 new)

Total deaths: 14,696 (1,942 new)

More detail on page 5

State California Update:

Total cases: 18,309 (1,352 new)

Total deaths: 492 (50 new)

More detail on page 11

Riverside County:

Total cases: 1,280 (101 new)

Total deaths: 33 (1 new)

More detail on page 13

Prediction modeling sites.

- Using CHME modeling data - <https://penn-chime.phl.io/>
- Using IHME modeling data - <https://covid19.healthdata.org/projections>

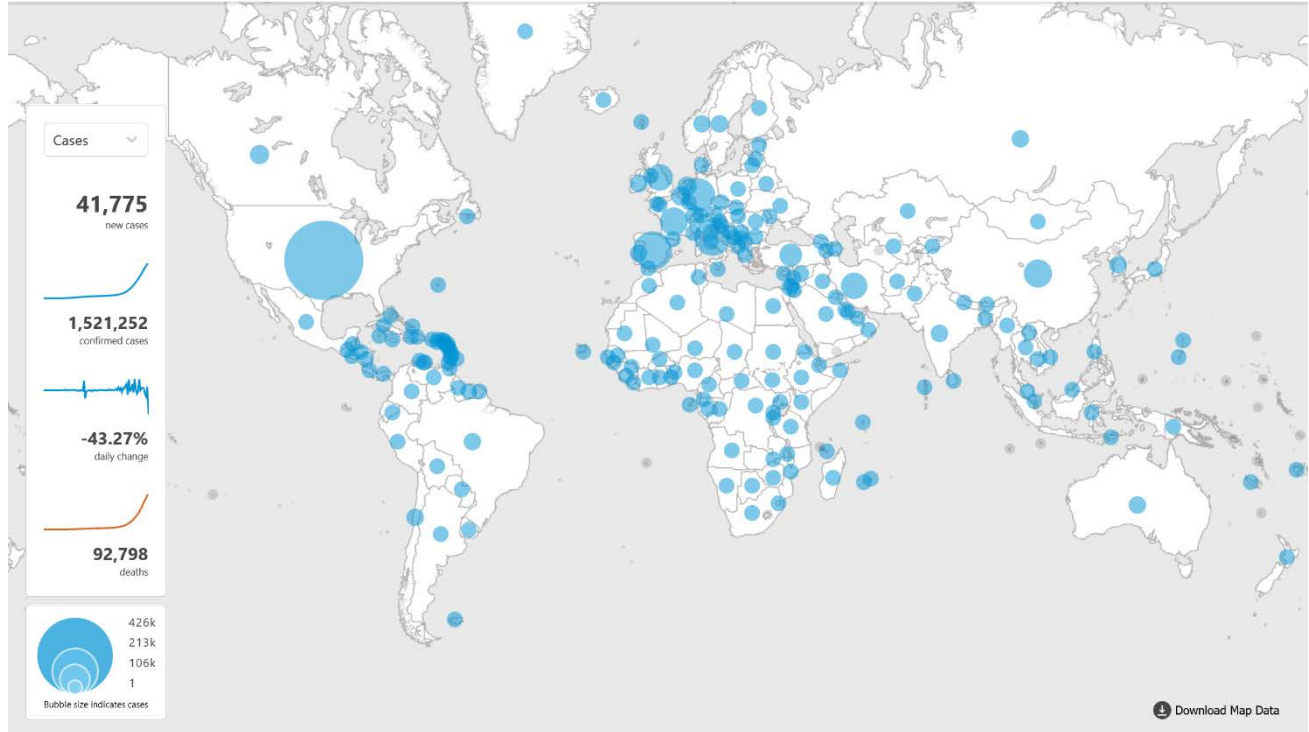
****Extraordinary Assumptions:** There are a lot of different data sources in this report not all of them match but aid to provide an overall picture of the current situation
COVID-19 Data Source Comparison - https://covid-19.splunkforgood.com/covid_19_datasource_comparison

Global Update:

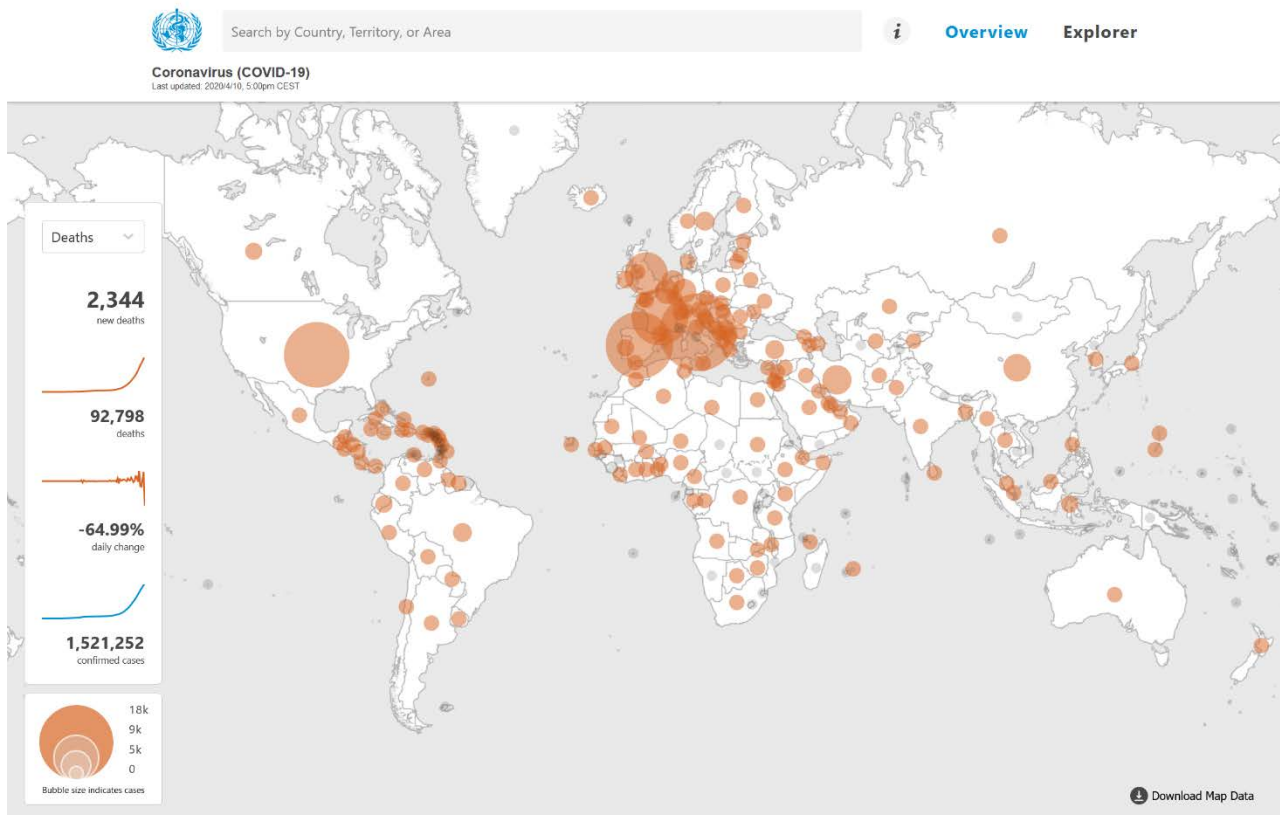
Total cases: 1,521,252 (41,775 new)
Total deaths: 92,798 (2,344 new)

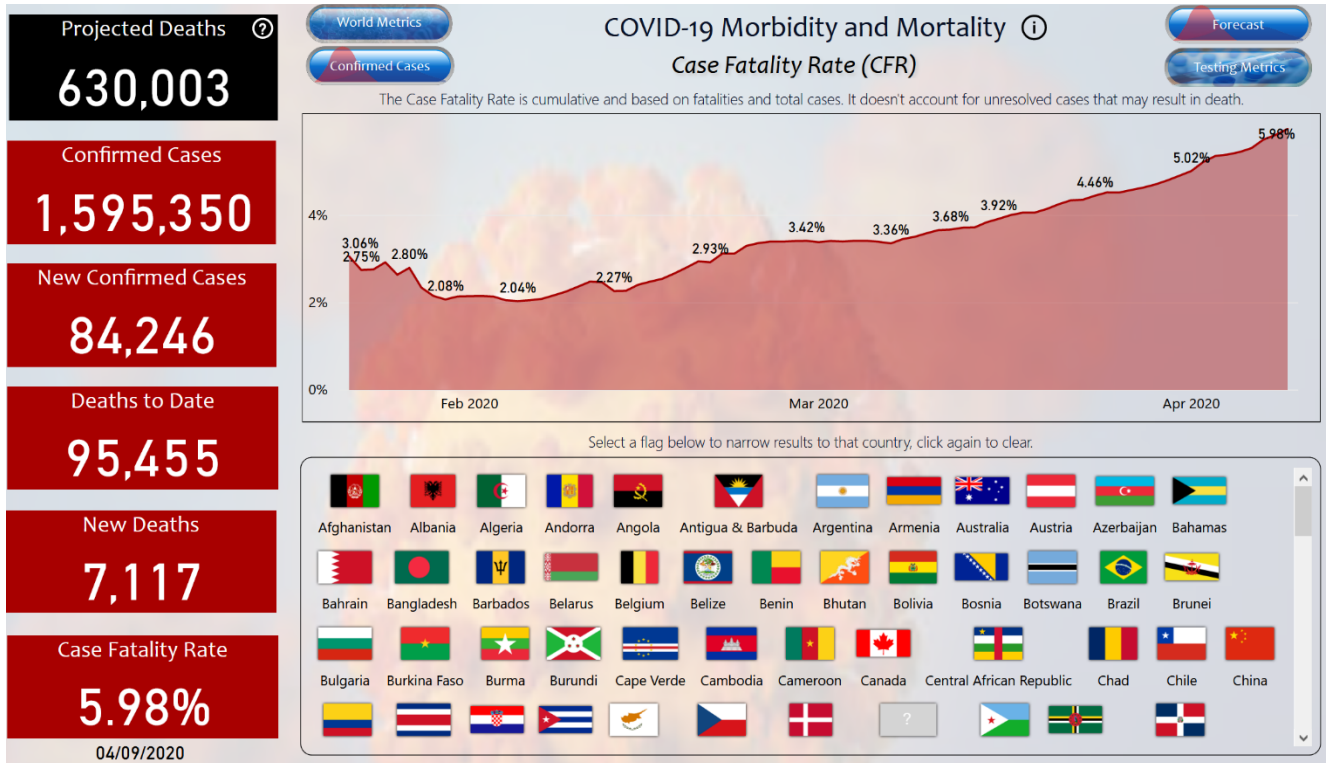
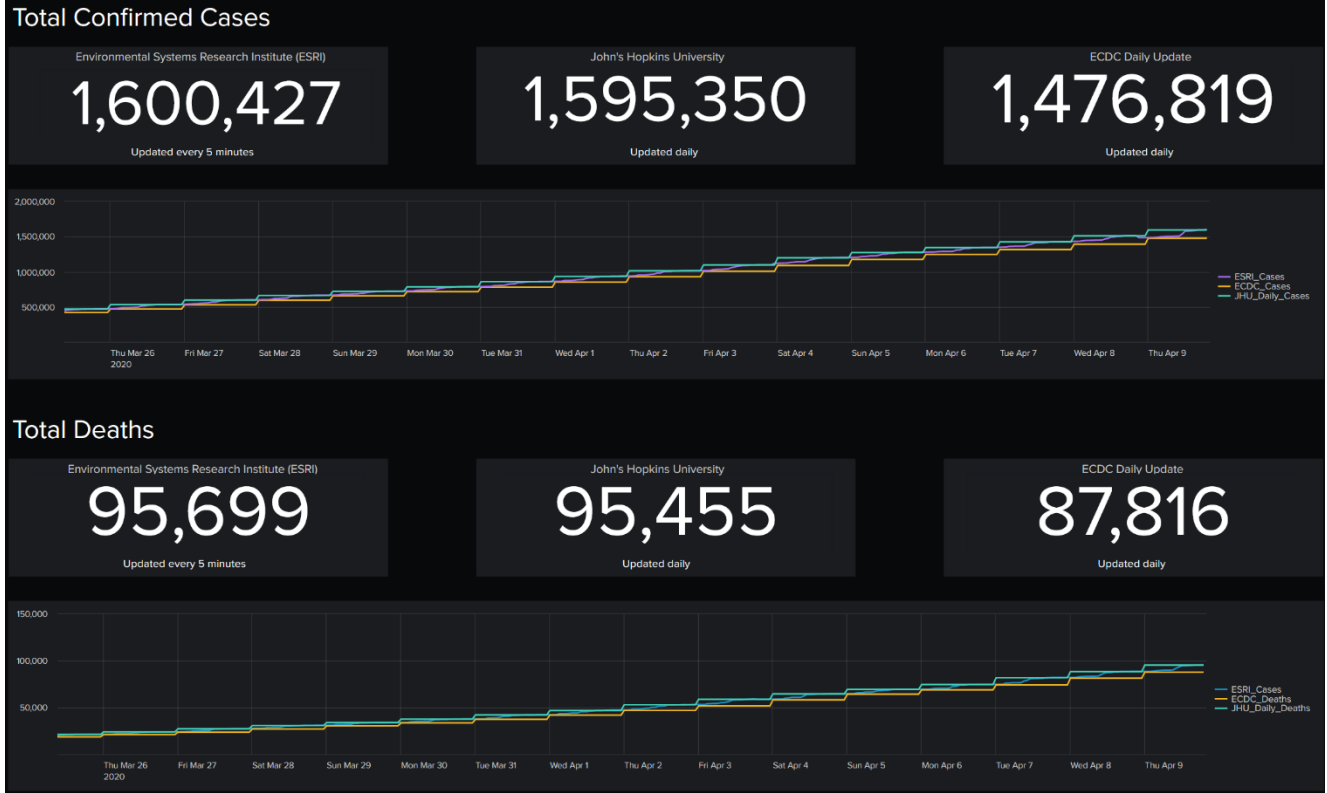
[https://www.who.int/redirect-pages/page/novel-coronavirus-\(covid-19\)-situation-dashboard](https://www.who.int/redirect-pages/page/novel-coronavirus-(covid-19)-situation-dashboard)

Globally, as of **2:00am CEST, 10 April 2020**, there have been **1,521,252 confirmed cases** of COVID-19, including **92,798 deaths**, reported to WHO.



https://covid-19.splunkforgood.com/covid_19_datasource_comparison





Global News Reports:

WHO Director-General's opening remarks at the media briefing on COVID-19 - 8 April 2020

- 100 days since WHO was notified of the first cases of “pneumonia with unknown cause” in China. It’s incredible to reflect on how dramatically the world has changed, in such a short period of time.
- An overview of what WHO has done in the past 100 days, and what we will be doing in the near future to alleviate suffering and save lives.

<https://www.who.int/dg/speeches/detail/who-director-general-s-opening-remarks-at-the-media-briefing-on-covid-19--8-april-2020>

Clothing makers in Asia give stark coronavirus warning

- Brands have profited for many years from producing in low wage countries without social security systems and have in many cases built up huge empires through this business model," said Dominique Muller of Labour Behind the Label. "Decades of exploitation must now be paid back to care for their workers."
- Factory owner Amit Mahtaney agrees. "Retailers have to help out. Richer governments' bailouts of the industry are also critical," he said. Without it, he claims, the industry could be wiped out completely.
- "If our workers don't die from coronavirus, they'd die of starvation."

<https://www.bbc.com/news/business-52146507>

Flour mills working 'round the clock' to meet demand

- Grocery sales of flour were up 92% in the four weeks to 22 March compared to the same period last year, according to consumer analysts Kantar.
- The National Association of British and Irish Millers (Nabim) says the industry is "working round the clock", milling flour 24 hours a day, seven days a week to double production - but is still struggling to meet demand.

<https://www.bbc.com/news/uk-52212760>

Balconies that Inspire us

- Balconies have always been designed to captivate and inspire the masses. But amid the coronavirus pandemic, they've taken on a newfound importance.

<http://www.bbc.com/travel/story/20200409-the-history-of-balconies>

National Update:

Cases of COVID-19 Reported in the US, by Source of Exposure

Total cases: 427,460 (32,449 new)

Total deaths: 14,696 (1,942 new)

Reporting cases: 55 (50 states, DC, Puerto Rico, Guam, Marianas & Virgin Islands)

Numbers close out at 4 p.m. the day before reporting

<https://www.cdc.gov/coronavirus/2019-ncov/cases-updates/cases-in-us.html>

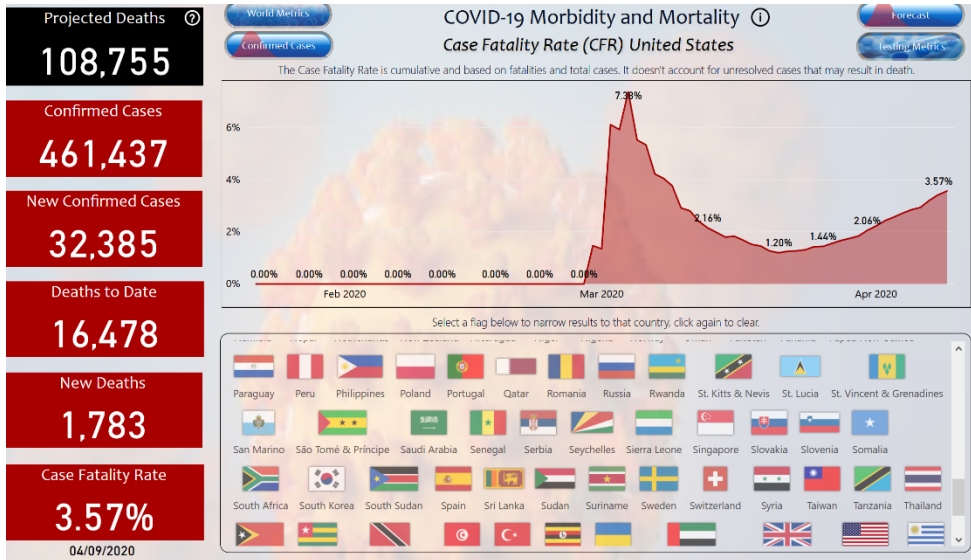
COVID-19 Situation in the Region of the Americas as of 9 April 2020 (14:00 EST)

- In the Region of the Americas, an additional 38,464 cases and 2,307 deaths were reported in the past 24 hours – representing an 8 % (cases) and 15% (deaths) relative increase compared to the previous day. Majority of the new cases (30,859) and deaths (1,383) were reported from the United States of America.

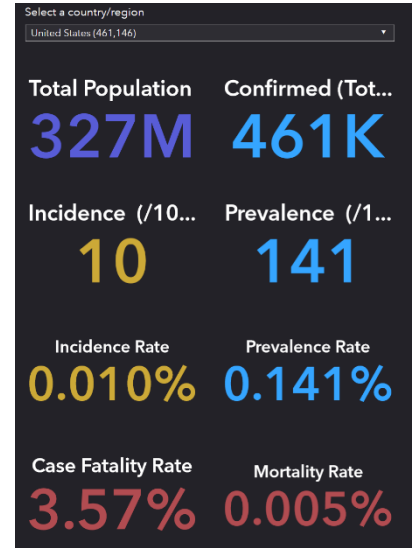
- **PAHO Response Strategy and Donor Appeal**

- PAHO has launched an Appeal to donors & partners to scale-up the capacity of the countries of the Americas to respond to COVID-19. The response strategy outlined in this Appeal has two main objectives: slow down the transmission of the virus and mitigate the health impact of COVID-19 in the Region.
- An initial US\$94.8 million are needed to support critical response efforts in countries most in need of help until September 2020. As this outbreak evolves, needs are likely to increase and the estimated financial requirements will be adjusted accordingly.

<https://www.paho.org/en/topics/coronavirus-infections/coronavirus-disease-covid-19>



<https://app.powerbi.com/view?r=eyJrIjoiazDI5MWYxZTctNjQ1Mi00ZjM4LWE0NmQtNGE2NzI3Y2EwYjklIiwidCI6ImYwNjdhMGY4LWlyNzQtNGE5Ni1hMTcwLTJlYjY2JhNmIxYm1YSiIsImMiOiZ9>



<https://tbus.sas.com/COVID19/>

Supply Chain, Transportation, and Critical Infrastructure

Experts Stress Partnerships as COVID-19 Disrupts Supply Chain

<https://www.ttnews.com/articles/experts-stress-partnerships-covid-19-disrupts-supply-chain>

SoftBank-Backed Nuro Gets OK for Driverless Delivery Tests in California

<https://www.ttnews.com/articles/softbank-backed-nuro-gets-ok-driverless-delivery-tests-california>

The Food Industry Association

<https://www.fmi.org/food-safety/coronavirus>

Guidance for the Food Industry: Coronavirus Outbreak

https://www.fmi.org/docs/default-source/coronavirus/food-industry-best-practices---short-term1279f0073cb6492d87b8799f97ca9ccc.pdf?sfvrsn=bdebd4d7_2

Safety and Security

- Unemployment claims reached 16.8 million in the last 3 weeks. Analysts suggest that unemployment could exceed 32.1% in the second quarter with Gross Domestic Product expected to drop by 30-50%

- In the month of March, the top 5 job loss sectors were leisure and hospitality (-459K), education and health care (-76K), business service (-52K), manufacturing (-49.5K), and retail trade (-46.2K).
- Economists suggest we are now at the leading edge of a recession and the jobless rate could top 10% in April.

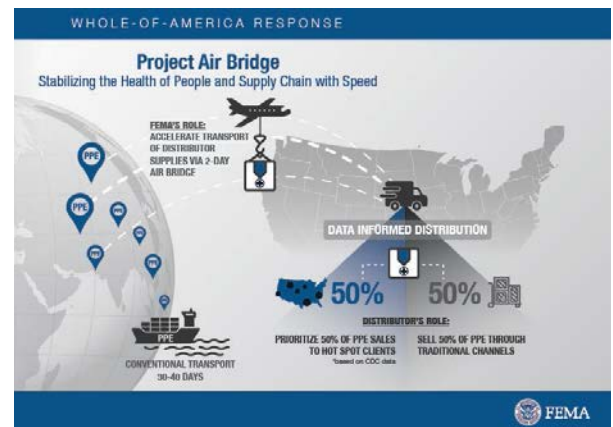
Food Water Shelter

- Meat processors have reported a growing number of coronavirus cases among their employees. While there has been no evidence that food or food packaging is a likely route of transmission, regional and national processors are temporarily closing or shifting operations to sanitize facilities. If enough plants were to close, it may slow food production and create livestock backups in the supply chain. Irregular food demand as a result of the pandemic will make it difficult for farmers to forecast future market conditions influencing how much they'll be able to sell and to whom.
- Food bank networks continue to express concern for falling donations, procurement of food in a competitive market, shortages of PPE and volunteers and difficulties delivering food to vulnerable populations. Higher unemployment will likely result in even more demand put upon food banks.
- Major food and beverage manufacturers as well as other industry are seeking additional CO2 in anticipation of possible shortages. Production of CO2 has decreased by 20% and is expected to be reduced to 50% by mid-April. If shortages of CO2 worsen, multiple supply chains may become disrupted.

FEMA - COVID-19 WHOLE-OF-AMERICA RESPONSE

Even as FEMA is focused on responding to COVID-19, we are also preparing and maintaining readiness for other disasters to include spring flooding, severe weather and the upcoming hurricane season.

- FEMA, HHS, and our federal partners work with state, local, tribal and territorial governments to execute a whole-of-America response to COVID-19 pandemic and protect the health and safety of the American people.
- FEMA Project Air Bridge expedites movement of critical supplies, in varying quantities, from the global market to medical distributors in various locations across the U.S.
 - The air bridge was created to reduce the time it takes for U.S. medical supply distributors to receive personal protective equipment and other critical supplies into the country for their respective customers.
 - FEMA covers the cost to fly supplies into the U.S. from overseas factories, reducing shipment time from weeks to days.



- FEMA does not have detailed visibility on PPE amounts until the cargo is loaded.
 - As of April 8th, 21 flights have landed, containing critical personal protective equipment (PPE): gloves, gowns, goggles, and masks.
 - Per agreements with distributors, 50 percent of supplies on each plane are for customers within the hotspot areas with most critical needs. The remaining 50 percent is fed into distributors' normal supply chain to their customers in other areas nationwide.
 - HHS and FEMA determine hotspot areas based on CDC data.
- On April 8, CDC issued additional guidance to help ensure critical infrastructure workers can perform their jobs safely after potential exposure to the virus.
 - The guidance covers essential health care workers who've been exposed to the coronavirus.
 - Essential workers can, under certain circumstances, go back to work, if they're asymptomatic and take the recommended actions of taking their temperature before they go to work, wearing a face mask at all times, and practicing social distancing when they're at work.
 - To date, CDC, state, and local public health labs and other laboratories have tested more than 1.95 million samples
 - The Department of Homeland Security has extended the REAL ID enforcement deadline to Oct.1, 2021.
 - American Red Cross is continuing to seek blood and convalescent plasma donations
 - People who have fully recovered from COVID-19 have antibodies in their plasma that can attack the virus.
 - The Red Cross has been asked by the U.S. Food and Drug Administration (FDA) to help identify prospective donors and manage the distribution of these products to hospitals treating patients in need. More information at RedCross.org.

COVID-19 Update



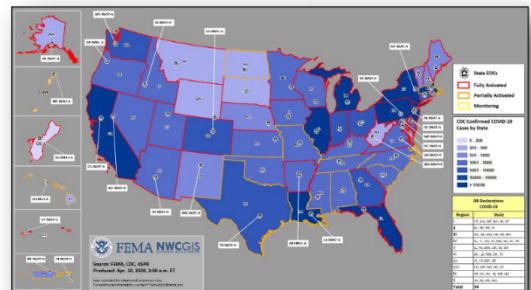
Situation: FEMA, HHS, and federal partners are working with state, local, tribe, and territorial governments to execute a whole-of-America response to the COVID-19 pandemic. The federal government is coordinating the deployment of PPE and ventilators from multiple sources including SNS, donations, and vendor procurements. These shipments are being sent nationwide with prioritization given to areas in greatest need.

State / Local Response: (COVID-19 SLB, 5:00 p.m. ET Apr 9)

- All State / Territory EOCs activated
- 42 states, D.C., 4 territories and 31 (+7) tribes issued shelter-in-place orders
- National Guard Bureau
 - Title 32 Status approved: 38
 - Title 32 Status requested: 11

FEMA / Federal Response: (COVID-19 SLB, 5:00 p.m. ET Apr 9)

- NRCC: Level I in unified effort with HHS SOC; all RRCCs activated
- IMAT-A teams deployed to 26 states; 37 LNOs deployed: states, territories, and tribes
- NYC: Javits Center currently with 155 (+54)/1,000 beds filled; 0 (-1)/84 beds with ventilators filled; 7 (+2)/48 ICU beds filled; 207 (+70) patients seen
- USNS Comfort 60 (+10)/500 beds filled; 16 (-11)/80 ICU beds filled; 76 (+12) patients seen
- USNS Mercy 13 (+1)/1000 beds filled; 6 (-1)/80 ICU beds filled; 32 (+2) patients
- LA: Ernest N. Morial Convention Center in New Orleans; 3 (+1)/204 beds filled; 3 (+1) patients seen
- 54 (+2) Major Disaster Declarations approved and 1 (-2) Disaster Declarations in process
- Eight task forces, jointly led by HHS and FEMA, continue work on assigned focus areas



COVID-19 Cases	Confirmed	Deaths
United States	464,079 (+33,988)	17,390 (+2,596)
Worldwide	1,436,198 (+82,837)	84,420 (+6,287)

(COVID-19 Response update, as of 6:46 a.m. ET, Apr 10)

National State & Local News Reports:

New York ramps up mass burials amid outbreak

- New York officials say that Hart Island, which for decades has been used as the final resting place for those who died unclaimed, will now also be used for unclaimed coronavirus victims.

<https://www.bbc.com/news/world-us-canada-52241221>

https://www.cnn.com/world/live-news/coronavirus-pandemic-04-10-20/h_c8813bed5b417d9a2a4ee3b46110adc1



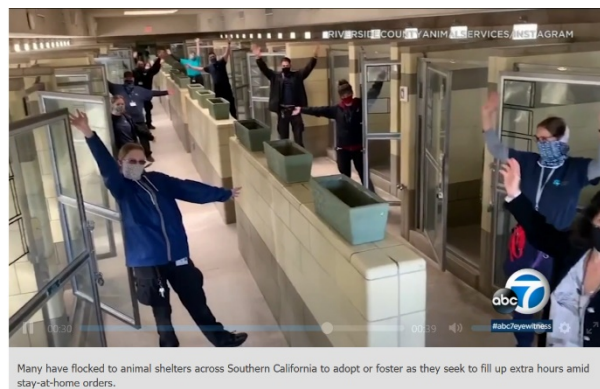
Kaiser temporarily closes dozens of medical offices across Southern California in effort to limit COVID-19 exposure

- In an effort to limit additional exposure to COVID-19 throughout the community, we have decided to temporarily close or limit services," the hospital company said in a statement Wednesday. "By doing this, we are able to coordinate care and combine much-needed medical equipment and staff while still providing high-quality care to our members."

<https://abc7.com/health/covid-19-kaiser-temporarily-closes-some-socal-medical-offices/6089722/>

Riverside County shelter runs out of adoptable pets amid COVID-19

<https://abc7.com/pets-animals/riverside-county-shelter-runs-out-of-adoptable-pets-amid-covid-19/6089550/>



COVID-19 antibody testing begins in Los Angeles County at multiple undisclosed locations

- Pre-selected participants, who were selected based on a random sample, will be checked for immunity against the virus.
- The county announced Thursday the pilot test program will involve 1,000 adults who will be tested every two weeks to track the virus. For those not selected to take part, official caution paying a private lab to conduct the test.

Newport Beach cryotherapy manufacturer switches gears to produce oxygen hoses for ventilators

- We use liquid nitrogen for the cryo chambers, and so when he came in he said look, this is something we can adapt to really quickly and easily, and all it would take is pretty much labor to put it together and I said, let's make it happen," Scheinberg said.
- They were able to manufacture and ship the first batch of hoses in less than 24 hours.
<https://abc7.com/health/newport-beach-cryotherapy-manufacturer-shifts-to-making-ventilator-oxygen-hoses/6088004/>

Newbury Park church faces backlash for defying physical distancing orders amid outbreak

- Despite orders restricting gatherings and non-essential businesses, a church in the Thousand Oaks area held an in-person Palm communion on Sunday.
- Godspcak Calvary Chapel in Newbury Park streamed its service online but opened its sanctuary doors afterward for communion. Hundreds of parishioners, some who are not part of the usual congregation, observed social distancing rules as they waited in line to enter and receive the sacramental bread and wine.
- Pastor Rob McCoy defended the move, saying it's a matter of religious freedom for the church to practicing their faith.
<https://abc7.com/health/ventura-county-church-faces-backlash-for-defying-physical-distancing-orders/6081097/>

Thousand Oaks health care workers give free meals to front line grocery workers

- Critical care workers at Los Robles Regional Medical Center in Thousand Oaks also took a moment from their exhausting day treating COVID-19 and other sick patients to thank another group working on the front lines - grocery workers.
- "I went into the grocery store the other day and I kind of felt bad. I felt that these people were doing the same thing we're doing," said Wendy Casson, nurse for Los Robles Hospital. "I'm doing the medical side of it. But they're providing for me, for our families, our community. They're still there every day. As hard as it is, as short as they are, not one complaint."
<https://abc7.com/society/thousand-oaks-health-care-workers-give-free-meals-to-grocery-workers/6075103/>

Food, bag shortages complicate schools' student meals mission during coronavirus crisis

- In addition to educating students through distance learning, public school districts are feeding them grab-and-go meals.
- Statewide, 60.1% of California public school students (3.7 million children) qualified for federal free and discounted meal plans, according to the California Department of Education. In Riverside County, 65.3% of students qualify, or 280,021 students. In San Bernardino County, it's 71.7% or 288,979 students.
<https://www.pe.com/2020/04/10/food-bag-shortages-complicate-schools-student-meals-mission-during-coronavirus-crisis/>

Reusable bag policy changing at San Diego stores due to coronavirus

- Some grocery stores have banned customers from bringing their own bags, but are still charging them to use theirs.
<https://www.cbs8.com/article/news/health/coronavirus/covid-coronavirus-reusable-bag-policy-san-diego-grocery-stores/509-2694433d-b16a-41c7-afae-f4543f098a52>

Kern County receives trailers to house homeless COVID-19 patients

- The state sent 15 camping trailers to Kern County, equipped with a queen size bed, a shower, and bathroom. The trailers are expected to be up and running Friday April 10.
<https://bakersfieldnow.com/news/local/kern-county-receives-trailers-to-house-homeless-covid-19-patients>

State California Update:

COVID-19 in California by the Numbers

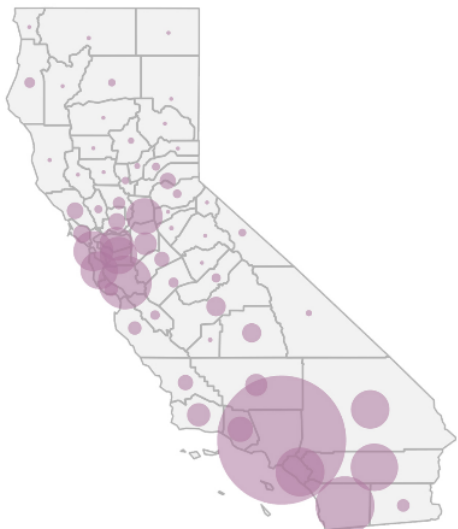
Total cases: 18,309 (1,352 new)
Total deaths: 492 (50 new)

Note: The following numbers reflect information received from local health jurisdictions as of 2 p.m. PDT. More current numbers may be available from local health jurisdictions.

<https://www.cdph.ca.gov/Programs/CID/DCDC/Pages/Immunization/nCoV2019.aspx>

California COVID-19 By The Numbers

April 9, 2020
 Numbers as of April 8, 2020



For county-level data:
data.chhs.ca.gov

CALIFORNIA COVID-19 SPREAD

18,309

Total Cases

Ages of Confirmed Cases

- 0-17: 252
- 18-49: 8,939
- 50-64: 5,003
- 65+: 4,056
- Unknown/Missing: 59

Gender of Confirmed Cases

- Female: 8,776
- Male: 9,130
- Unknown/Missing: 403

Hospitalizations

Confirmed COVID-19
2,825/1,132
 Hospitalized/in ICU

Suspected COVID-19
2,803/530
 Hospitalized/in ICU

492

Fatalities

Stay Home. Save Lives.

covid19.ca.gov



Testing Data

CA ⓘ	18,309 11.2%	145,191	14,100	177,600 (39,512,223)
------	-----------------	---------	--------	-------------------------

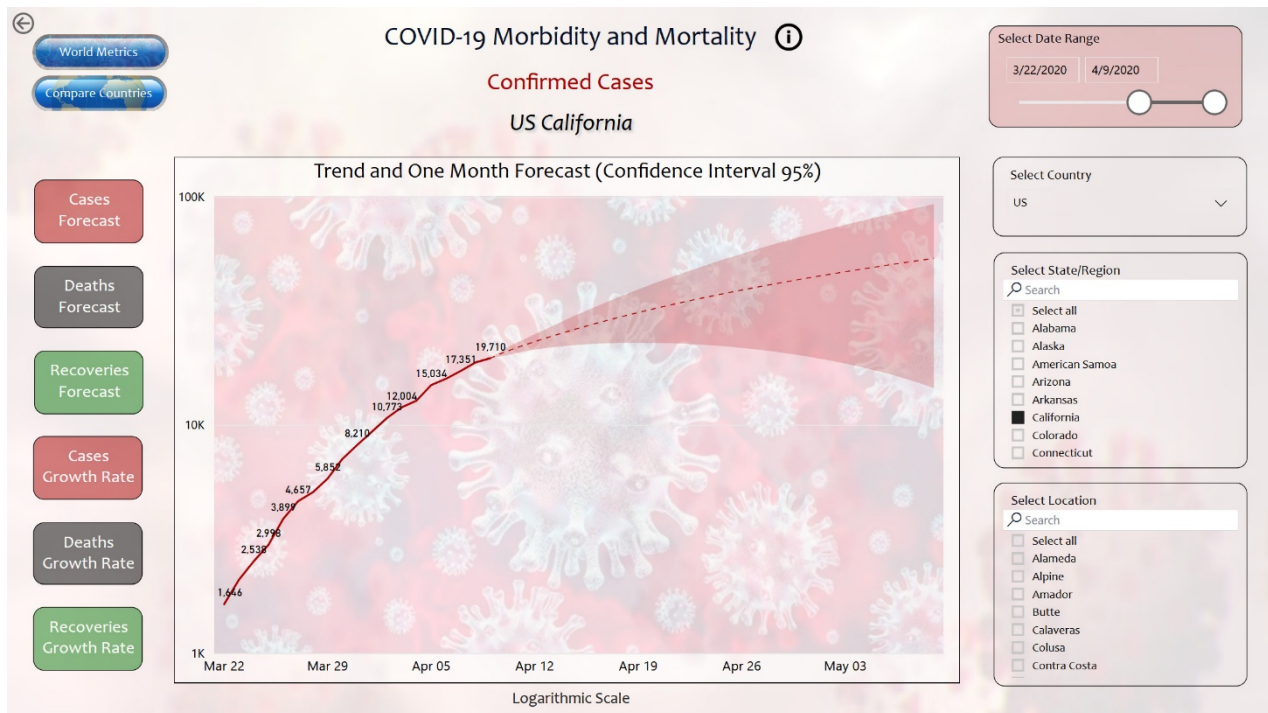
Test Locations:

- San Francisco
- Palo Alto
- Hayward
- San Jose
- San Mateo
- Lake Elsinore
- Sacramento
- Martinez
- San Fernando Valley
- L.A. city
- L.A. city
- L.A. city
- L.A. city
- L.A. city
- L.A. city
- Los Angeles
- Los Angeles
- Los Angeles
- L.A. city
- L.A. city
- L.A. city
- Fremont
- El Centro
- Calexico
- San Joaquin

<https://coronavirus.1point3acres.com/en/test?state=CA>

Location	Cases	Deaths	Fatality	Recovered
▼ California 🏠 📄 ⓘ 🔄	+54 20,223	547	2.7%	705
Los Angeles	+29 7,984	223	2.8%	0
San Diego	1,628	40	2.5%	0
Santa Clara	1,442	47	3.3%	1
Riverside	1,280	33	2.6%	125
Orange	1,079	17	1.6%	0
San Bernardino	729	24	3.3%	0
San Francisco	724	10	1.4%	0
Alameda	+2 715	17	2.4%	0
San Mateo	633	21	3.3%	0
Sacramento	613	22	3.6%	0
Contra Costa	484	8	1.7%	0
Kern	337	3	0.9%	0
Ventura	274	7	2.6%	108
San Joaquin	245	14	5.7%	0
Santa Barbara	243	2	0.8%	79
Tulare	187	10	5.3%	11
Fresno	173	3	1.7%	10
Marin	154	10	6.5%	0
Sonoma	+6 142	1	0.7%	43
Placer	120	4	3.3%	0
Solano	115	2	1.7%	74
San Luis Obispo	+2 104	1	1%	65

<https://coronavirus.1point3acres.com/en>



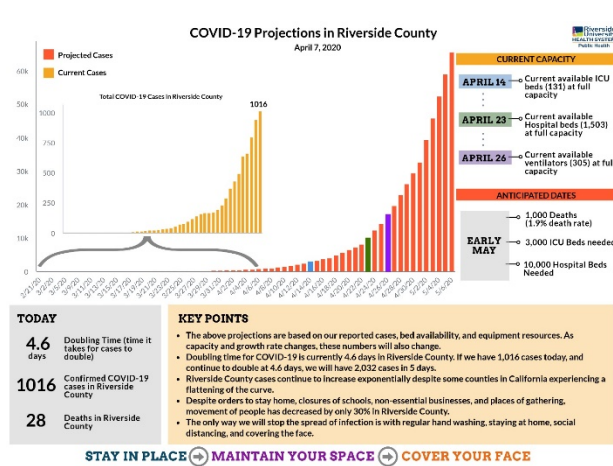
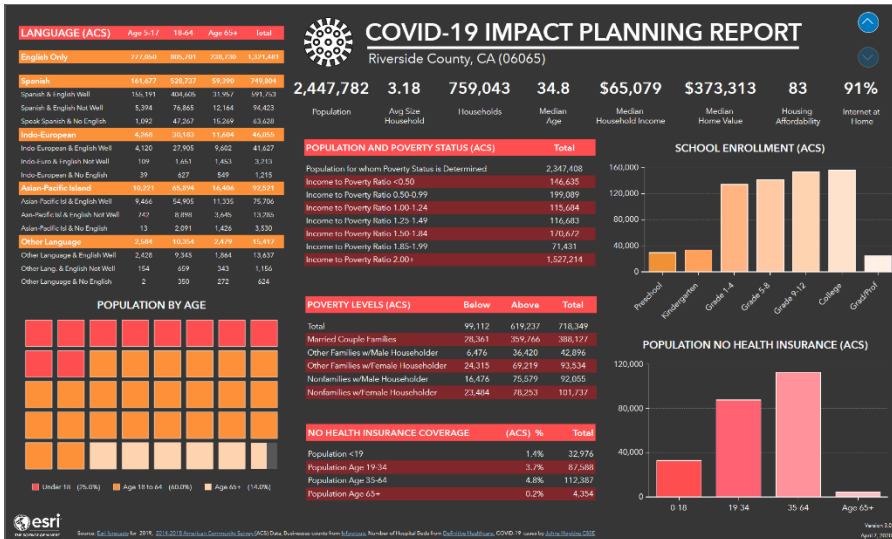
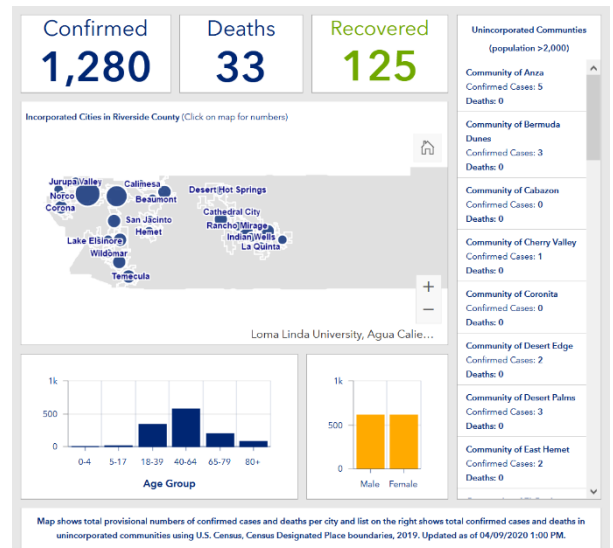
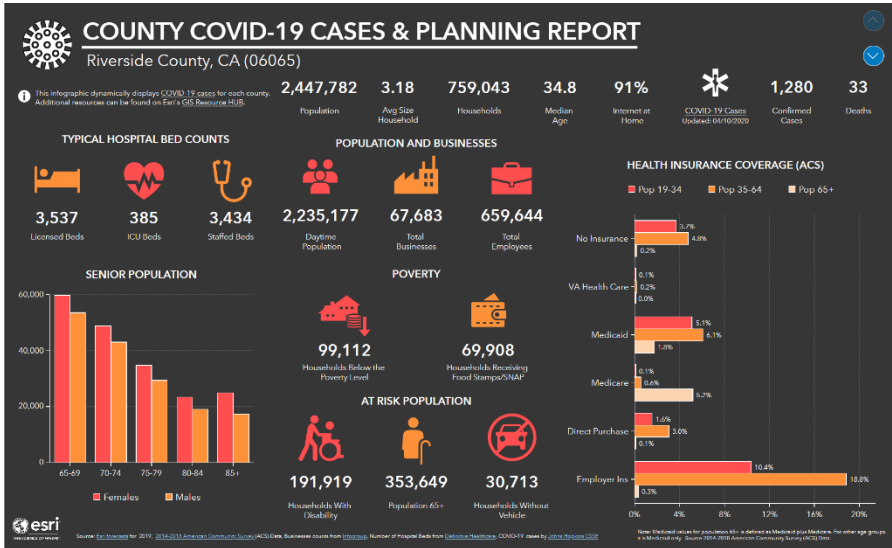
<https://app.powerbi.com/view?r=eyJrIjojZDI5MWYxZTctNjQ1Mi00ZjM4LWE0NmQtNGE2NzI3Y2EwYjkiwiwidCI6ImYwNjdhMGY4LWlyNzQtNGE5Ni1hMTcwLTJiY2JhNmliYml1YSIsImMiOiZ9>

Local SOCAL County Updates: Riverside County:

COVID-19 by the Numbers

Total cases: 1,280 (101 new)
Total deaths: 33 (1 new)
Estimated Population: 2,424,790

<https://www.rivcoph.org/>
<https://www.rivcoph.org/coronavirus>



<https://www.arcgis.com/apps/opsdashboard/index.html#/dc74772707d94db9a7d24d30ffdcf36c>

RUHS Public Health- April 9, 2020:

- Riverside County launches mobile app to report nonessential businesses
<https://www.rivcoph.org/Portals/0/Documents/CoronaVirus/April/News/4920launchofapp.pdf?ver=2020-04-10-090016-707×tamp=1586535076352>
- A closed department store building in Riverside has been selected as the second Riverside County site for a federal medical station (FMS). The 90,000-square-foot building that housed the Sears department on Arlington Avenue will be used for a 125-bed hospital using materials from the U.S. Department of Health and Human Services.

- The California National Guard this week will be at the Magnolia Avenue site to set up a portion of the FMS. The California National Guard will not perform any law enforcement activities. The station will provide an additional 125 beds to the county's overall hospital system, which will ease the burden from an expected surge in COVID-19 cases

English - https://www.rivcoph.org/Portals/0/Documents/CoronaVirus/April/News/4.9.20_second_fms_3.pdf?ver=2020-04-09-145254-543×tamp=1586469194225

Spanish - https://www.rivcoph.org/Portals/0/Documents/CoronaVirus/April/News/9_de_abril_de_2020.pdf?ver=2020-04-09-170900-240×tamp=1586477417680

Other Local County Links

San Luis Obispo County:

<https://www.emergencyslo.org/en/covid19.aspx>

Kern County:

<https://kernpublichealth.com/2019-novel-coronavirus/>

Santa Barbara County:

<https://publichealthsbc.org/>

<https://publichealthsbc.org/dashboard/>

Ventura County

<https://www.vcemergency.com/>

Los Angeles County:

<http://publichealth.lacounty.gov/media/Coronavirus/>

Orange County:

https://www.ochealthinfo.com/phs/about/epidasmt/epi/dip/prevention/novel_coronavirus

San Bernardino County:

<http://wp.sbcounty.gov/dph/coronavirus/>

Imperial County:

<http://www.icphd.org/health-information-and-resources/healthy-facts/covid-19>

<https://www.arcgis.com/apps/opsdashboard/index.html#/684c52c01a0c4dbda380d7b905ef0b46>

San Diego County:

https://www.sandiegocounty.gov/content/sdc/hhsa/programs/phs/community_epidemiology/dc/2019-nCoV/status.html

Education Updates:

California Community Colleges Chancellor's Office (CCCCO)

- Established a website for COVID-19:

<https://www.cccco.edu/About-Us/Chancellors-Office/Divisions/Communications-and-Marketing/Novel-Coronavirus>

Expect limited face to face instruction for Summer and social distancing and the like to extend into Fall and Spring

California Department of Education (CDE)

<https://www.cde.ca.gov/ls/he/hn/coronavirus.asp>

Riverside County Office of Education (RCOE)

<https://www.rcoe.us/>

Established a website at: <https://www.rcoe.us/coronavirus/>

Educational Resources for Remote Learning:

<https://www.rcoe.us/educational-services/educational-resources-remote-learning/>


Regional Weather

COVID-19
Weather
Support

Issued:

900 am April 10, 2020

NATIONAL
WEATHER SERVICE
SAN DIEGO, CA



IMPACT SCALE

None

Minor

Moderate

High

Extreme

Resources

<https://www.weather.gov/spot/>
<https://inws.ncep.noaa.gov>
<https://www.wrh.noaa.gov/sgx/event/dss/table.php>

(858) 675 - 8705
(24/7, Restricted)

Weather.gov/SanDiego

7-day forecast for Counties in far southwest CA

Period April 10 - April 17 (24-hr)	Orange	SW San Bernardino	All Deserts	Western Riverside	San Diego
Friday	Showers Heavy at times morning	Rain mtn snow Tapering off Late afternoon	Showers Heaviest lower desert	Showers mtn snow Tapering off Late afternoon	Rain Heavy at times Into afternoon
Saturday	Warmer	Warmer	Warmer	Warmer	Showers end early
Sunday	Warmer	Few showers	Warm	Few showers	Light shower Warmer
Monday	NONE	NONE	Warm	NONE	NONE
Tuesday	Warmer	Warmer	Warm	Warmer	Warmer
Wednesday	NONE	NONE	Warm	NONE	NONE
Thursday	NONE	NONE	NONE	NONE	NONE

Forecast Discussion

An unseasonably strong storm is slowly moving through San Diego County. Rain, heavy at times in San Diego County into the afternoon and tapering off. The last of the rain in San Diego County this evening. Snow level 5500 feet rising to 6000 feet. **Additional totals of 0.25 to 0.50 inches most areas except 1 to 2 inches in San Diego County. Significant urban and rural flooding and flooding on San Diego and Santa Margarita rivers. Rain rates 0.25 to 0.5 per hour at times today. New snowfall of 4 to 8 inches above 6500 feet, 1 to 4 inches above 6000 feet. Dry warming trend starts except a weak weather system on Sunday. Dry and warmer next week.**