

**Daily Situation Summary  
Wednesday, April 1, 2020  
As of 12:00 PM**

**Coronavirus Disease 2019 (COVID-19)**



**Always check with trusted sources for the latest accurate information about novel coronavirus.**

- **World Health Organization**
- **Centers for Disease Control and Prevention**
- **California Department of Public Health**
- **County Department/Public Health**
- **Residents in most counties can call 2-1-1**

**This can't be real? Fact-checking resources.**

- <https://www.boomlive.in/>
- <https://www.snopes.com/>

**FEMA has created a rumor control link for COVID-19.**

- <https://www.fema.gov/coronavirus-rumor-control>

# Daily Situation Summary

## Wednesday, April 1, 2020

### As of 12:00 PM

#### FBI Warns of Ongoing Zoom-Bombing Attacks on Video Meetings

- The US Federal Bureau of Investigation (FBI) warned today of hijackers who join Zoom video conferences used for online lessons and business meetings with the end goal of disrupting them or for pulling pranks that could be later shared on social media platforms.
- "The FBI has received multiple reports of conferences being disrupted by pornographic and/or hate images and threatening language," the warning published by FBI's Boston Division says.

<https://www.bleepingcomputer.com/news/security/fbi-warns-of-ongoing-zoom-bombing-attacks-on-video-meetings/>



**1 STAY IN PLACE**



**2 MAINTAIN YOUR SPACE**



**3 COVER YOUR FACE**

BANDANA      NECK GAITER      HOMEMADE

**X**      N95 MASK      **DO NOT PURCHASE**      SURGICAL MASK

MEDICAL MASKS SUCH AS SURGICAL AND N95 MASKS ARE IN SHORT SUPPLY AND NEEDED BY HEALTH CARE PROFESSIONALS.

TO PREVENT SHORTAGES, THE PUBLIC SHOULD AVOID PURCHASING THESE MASKS.

# Daily Situation Summary

## Wednesday, April 1, 2020

### As of 10:00 AM

## Quick Reference Sheet

### Global Update:

<b>Total cases:</b>	<b>823,626</b>	<b>(57,700 new)</b>
<b>Total deaths:</b>	<b>30,039</b>	<b>(6,704 new)</b>
<b>Mortality rate:</b>	<b>4.88%</b>	<b>up 0.18%</b>

- More detail on page 3

### National Update:

<b>Total cases:</b>	<b>186,101</b>	<b>(45,197 new)</b>
<b>Total deaths:</b>	<b>3,603</b>	<b>(1,198 new)</b>
<b>Mortality rate:</b>	<b>2.4%</b>	<b>up 0.6%</b>

- More detail on page 5

### State California Update:

<b>Total cases:</b>	<b>6932</b>	<b>(4,397 new)</b>
<b>Total deaths:</b>	<b>150</b>	<b>(97 new)</b>
<b>Mortality rate:</b>	<b>2.11%</b>	<b>up 0.01%</b>

- More detail on page 8

### Riverside County:

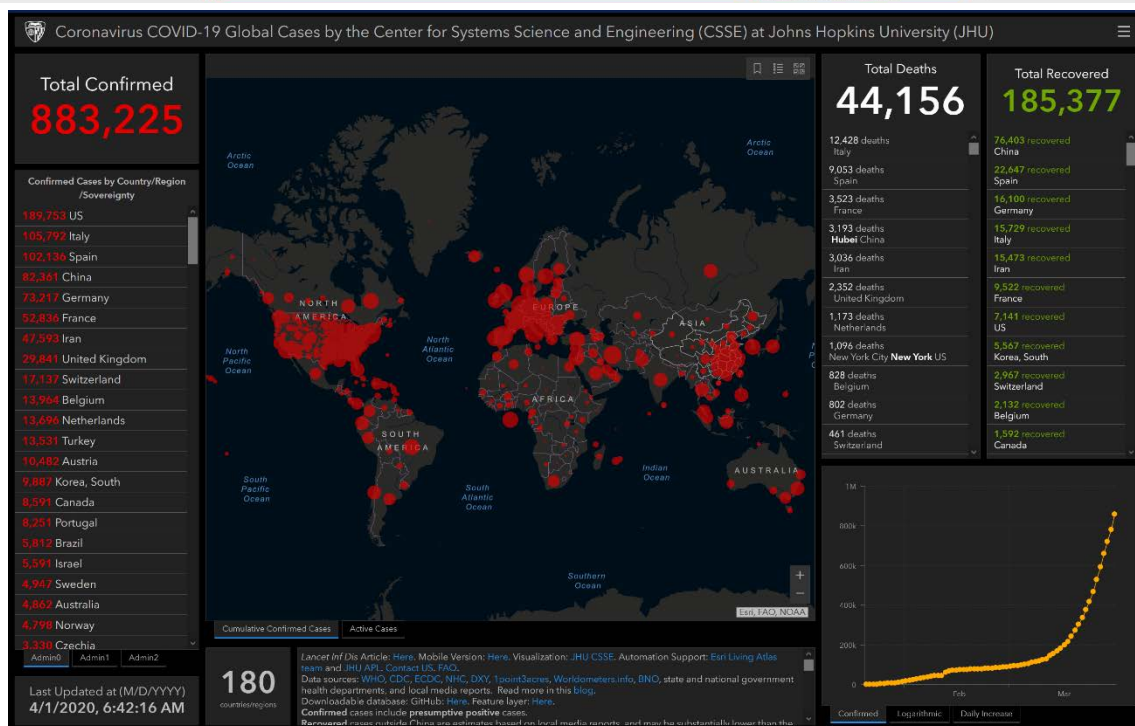
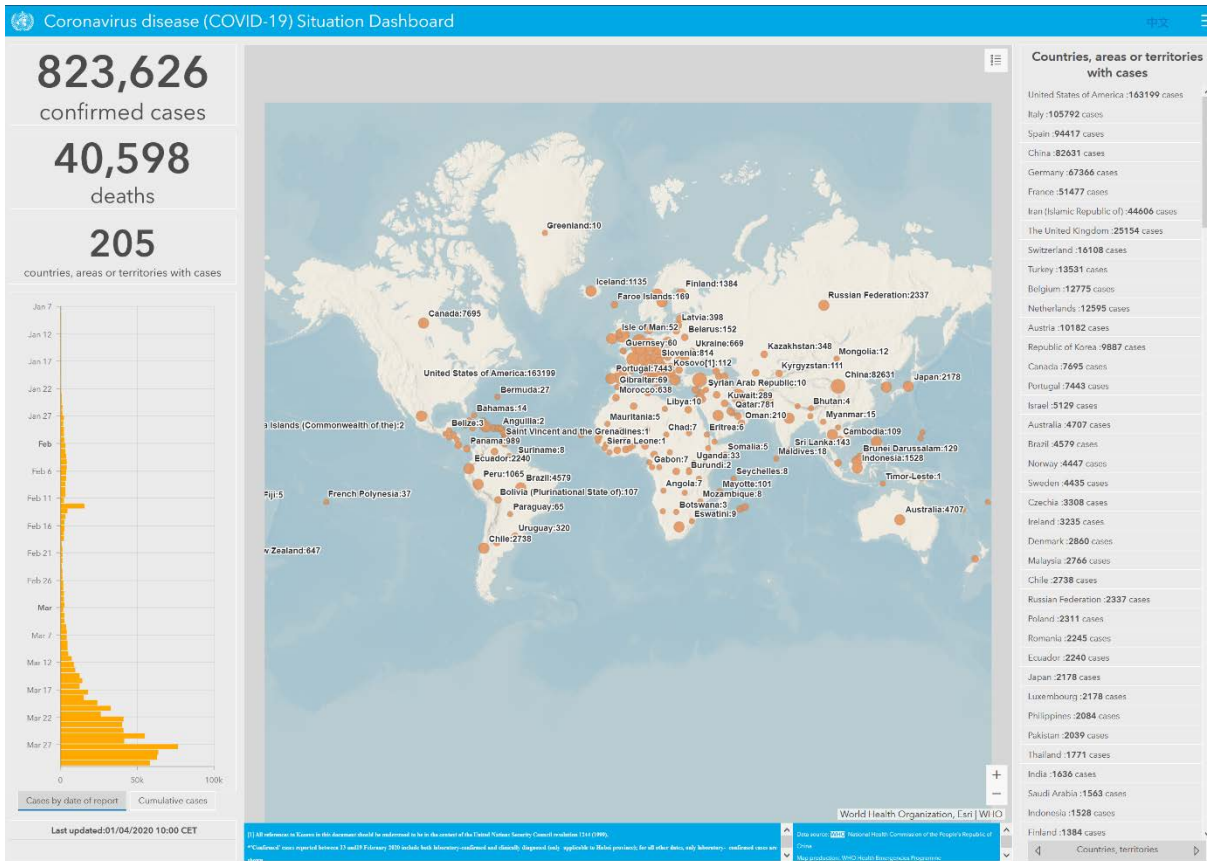
<b>Total cases:</b>	<b>371</b>	<b>(220 new)</b>
<b>Total deaths:</b>	<b>13</b>	<b>(8 new)</b>
<b>Mortality rate:</b>		

- More detail on page 10

# Global Update:

Total cases: **823,626** (57,700 new)  
 Total deaths: **40,598**  
 Data Source – WHO -

[https://www.who.int/redirect-pages/page/novel-coronavirus-\(covid-19\)-situation-dashboard](https://www.who.int/redirect-pages/page/novel-coronavirus-(covid-19)-situation-dashboard)

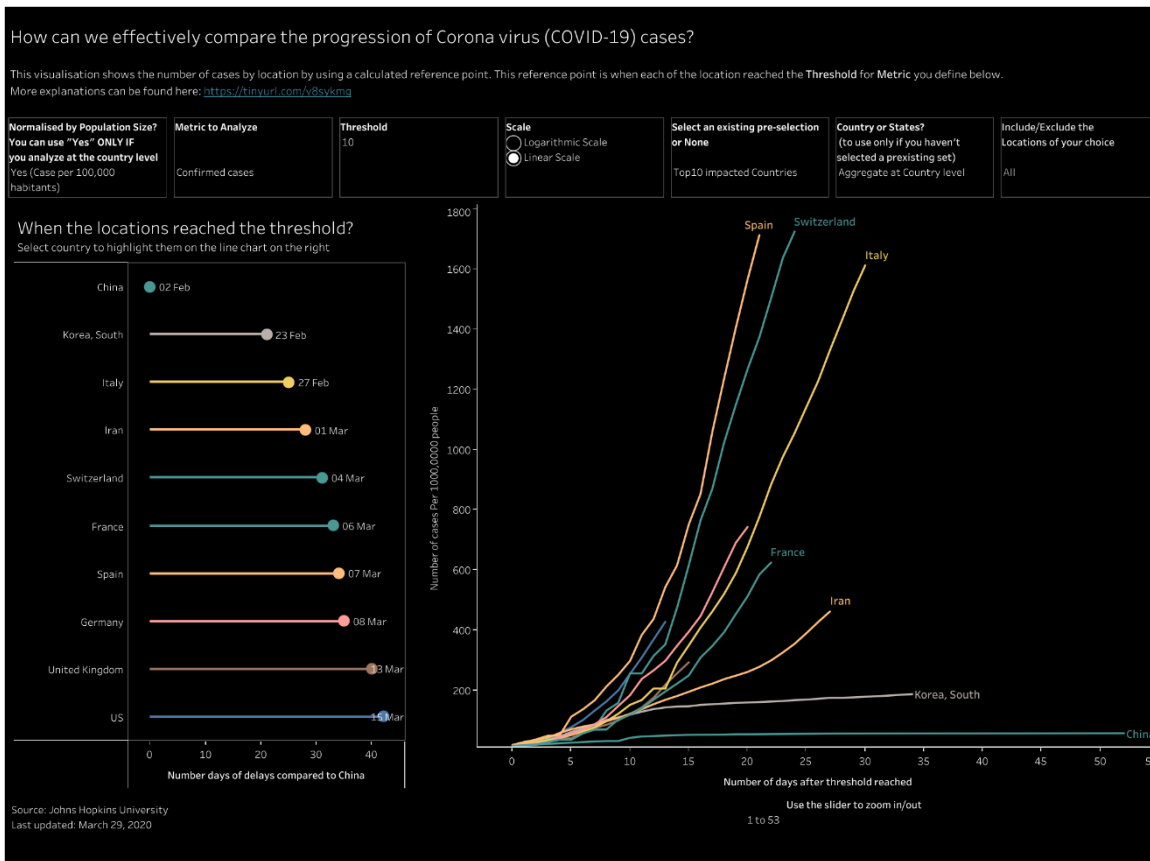


<https://coronavirus.jhu.edu/map.html>

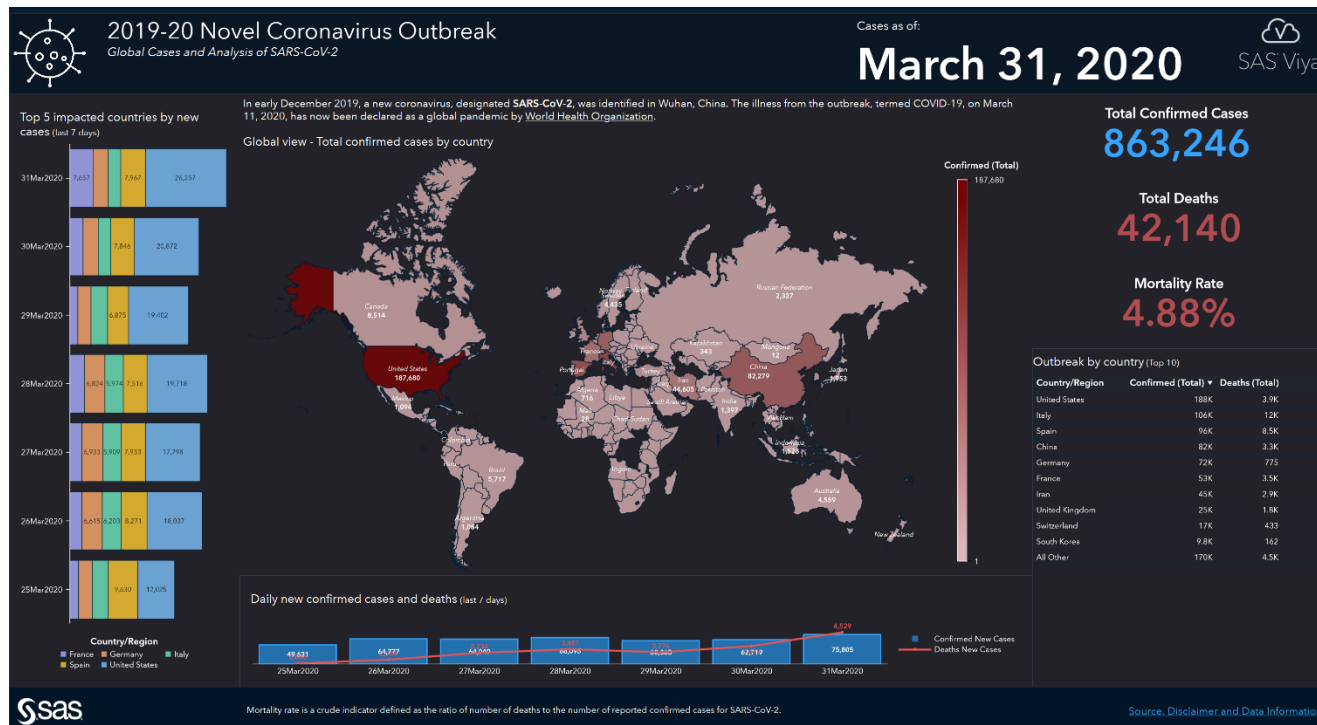
# Some other Analytical tools

## Potential impact of COVID-19 in human mortality

[https://public.tableau.com/views/COVID-19mortalitycalculator/COVID-19mortalitycalc?:display\\_count=y&showVizHome=no](https://public.tableau.com/views/COVID-19mortalitycalculator/COVID-19mortalitycalc?:display_count=y&showVizHome=no)



<https://public.tableau.com/profile/marc.psaila#!/vizhome/Coronavirusfortableaupublic/Coronaviruscasesbycountry>



<https://tub.sas.com/COVID19/>



## A Supply Chain Inter-Agency Coordination Cell (SCICC) has been established

- Provide an overview of supply chain requirements and ensure that COVID-19 needs are prioritized within the wider humanitarian response. The SCICC has established a Supply and Market Working Group to streamline procurement of critical supplies and equipment to address global shortages.

## National Update:

### Cases of COVID-19 Reported in the US, by Source of Exposure

Total and new cases in last 24 hours

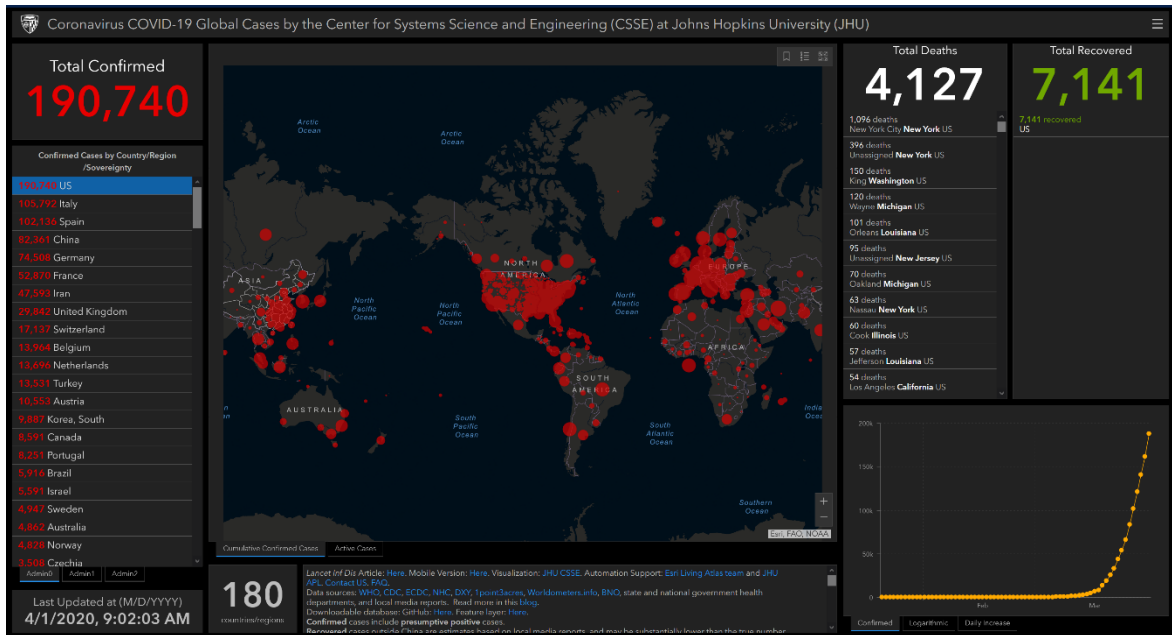
Travel-related	1042	(330 new)
Close contact	2,919	(1,593 new)
<b>Total cases:</b>	<b>186,101</b>	<b>(45,197 new)</b>
<b>Total deaths:</b>	<b>3,603</b>	<b>(1,198 new)</b>

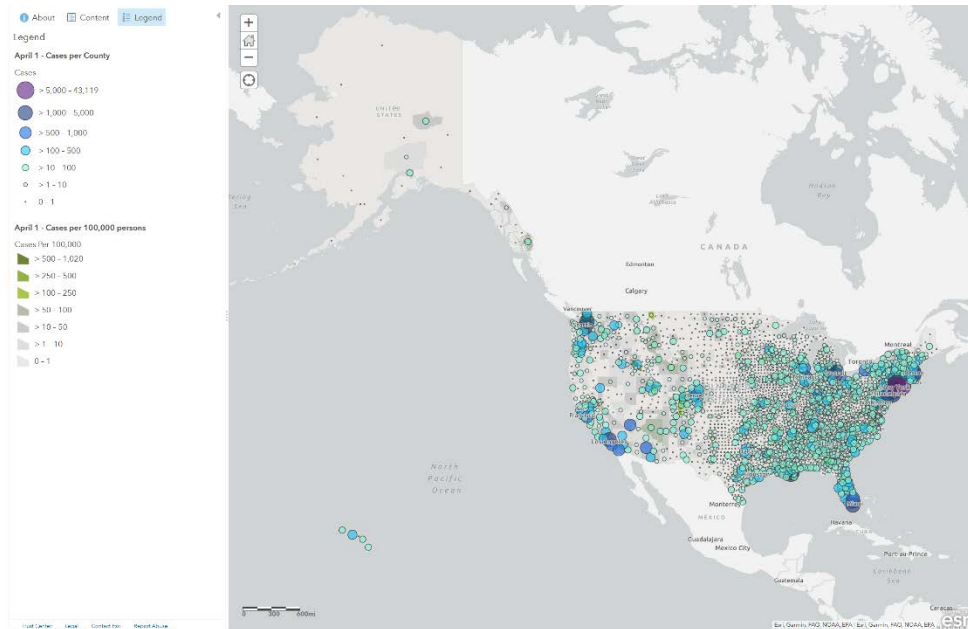
Reporting cases: 55 (50 states, DC, Puerto Rico, Guam, Marianas & Virgin Islands)  
Numbers close out at 4 p.m. the day before reporting

<https://www.cdc.gov/coronavirus/2019-ncov/cases-updates/cases-in-us.html>

### Johns Hopkins mapping 2019-nCoV tool

<https://coronavirus.jhu.edu/map.html>





Coronavirus Cases by County (CSUN Geography)

<https://www.arcgis.com/home/webmap/viewer.html?webmap=f27b99c817a24605a2ad9700f83c8dcf&extent=-126.1507,22.0244,-67.22,51.3168>

## Pence says coronavirus task force will make recommendation on wearing masks "at the appropriate time"

- Vice President Mike Pence said that the US Centers for Disease Control and Prevention is looking at the the issue of masks "as a protective measure" for all Americans "right now."
- CDC is looking to change facemask procedure

## US Surgeon General says "aggressive mitigation" helped Washington and California "flatten their curve"

- US Surgeon General Dr. Jerome Adams said on the "Today" show on Wednesday. "The good news is that states like Washington, like California, countries like Italy, when they leaned into aggressive mitigation, they're being able to flatten their curve and we know that if you do this that it usually takes about three to four weeks from the time you start to lean into it before you level it off," Adams told NBC's Savannah Guthrie. Washington and California were home to some of the earliest Covid-19 cases in the United States.
- Yet each state has its own curve and "the governors get to make the decisions, but we're going to give them the best possible guidance we can and that's to stay at home and social distance," Adams said.
- "Everyone is on a different place on their curve. Some places aren't going to hit their peak until after 30 days and they're going to need to continue social distancing. Other places that leaned in early may be able to relax some of their recommendations earlier."

## Distilleries Making Hand Sanitizer to Fight COVID-19

<https://www.distilledspirits.org/distillers-responding-to-covid-19/distilleries-making-hand-sanitizer/>

## **K12 School Status Updates**

- Closed Districts 16,140
- Closed Schools 119,577

<https://www.arcgis.com/apps/opsdashboard/index.html#/5df0fa8209d543adb9a3ce3cdc7d49aa>

## **At least 80% of Americans are under stay-at-home orders**

- More than 262 million Americans are currently under stay-at-home orders -- over 80% of the US population -- according to a CNN count.
- This count includes state, city and county orders. The numbers were tallied using US census data.

Among the most heavily impacted states are:

- California: 39.5 million people
- New York: 19.4 million people
- Illinois: 12.6 million people
- Ohio: 11.6 million people
- North Carolina: 10.4 million people

## **FDA authorizes two-minute antibody testing kit to detect coronavirus**

- The Food and Drug Administration issued an emergency approval [Tuesday](#) for a serological testing kit produced by Bodysphere Inc. that can detect a positive or negative result for COVID-19 in two minutes.

[https://www.axios.com/fda-coronavirus-two-minute-testing-kit-bodysphere-a665429d-488d-4edf-bd36-9180e2a06e4c.html?utm\\_source=facebook&utm\\_medium=social&utm\\_campaign=organic&utm\\_content=1100](https://www.axios.com/fda-coronavirus-two-minute-testing-kit-bodysphere-a665429d-488d-4edf-bd36-9180e2a06e4c.html?utm_source=facebook&utm_medium=social&utm_campaign=organic&utm_content=1100)

## **MIT Chemists Have Developed a Peptide That Could Block COVID-19**

- MIT chemists are testing a protein fragment that may inhibit coronaviruses' ability to enter human lung cells.
- The research described in this article has been published on a preprint server but has not yet been peer-reviewed by scientific or medical experts.
- In hopes of developing a possible treatment for COVID-19, a team of MIT chemists has designed a drug candidate that they believe may block coronaviruses' ability to enter human cells. The potential drug is a short protein fragment, or peptide, that mimics a protein found on the surface of human cells.

<https://scitechdaily.com/mit-chemists-have-developed-a-peptide-that-could-block-covid-19/>



# State California Update:

## COVID-19 in California by the Numbers

**Total cases:** 6932 (4,397 new)

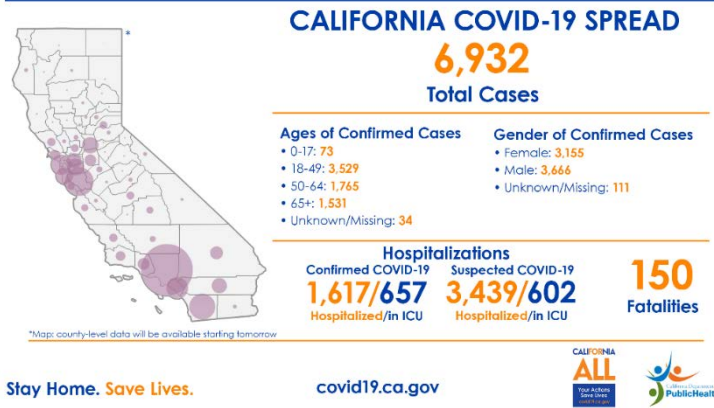
**Total deaths:** 150 (97 new)

Note: The following numbers reflect information received from local health jurisdictions as of 2 p.m. PDT. More current numbers may be available from local health jurisdictions.

<https://www.cdph.ca.gov/Programs/CID/DCDC/Pages/Immunization/nCoV2019.aspx>

## California COVID-19 By The Numbers

March 31, 2020  
Numbers as of March 30, 2020



## COVID-19 by the Numbers

As of March 30, 2020, there are a total of 6,932 positive cases and 150 deaths in California.

### Ages of all confirmed positive cases:

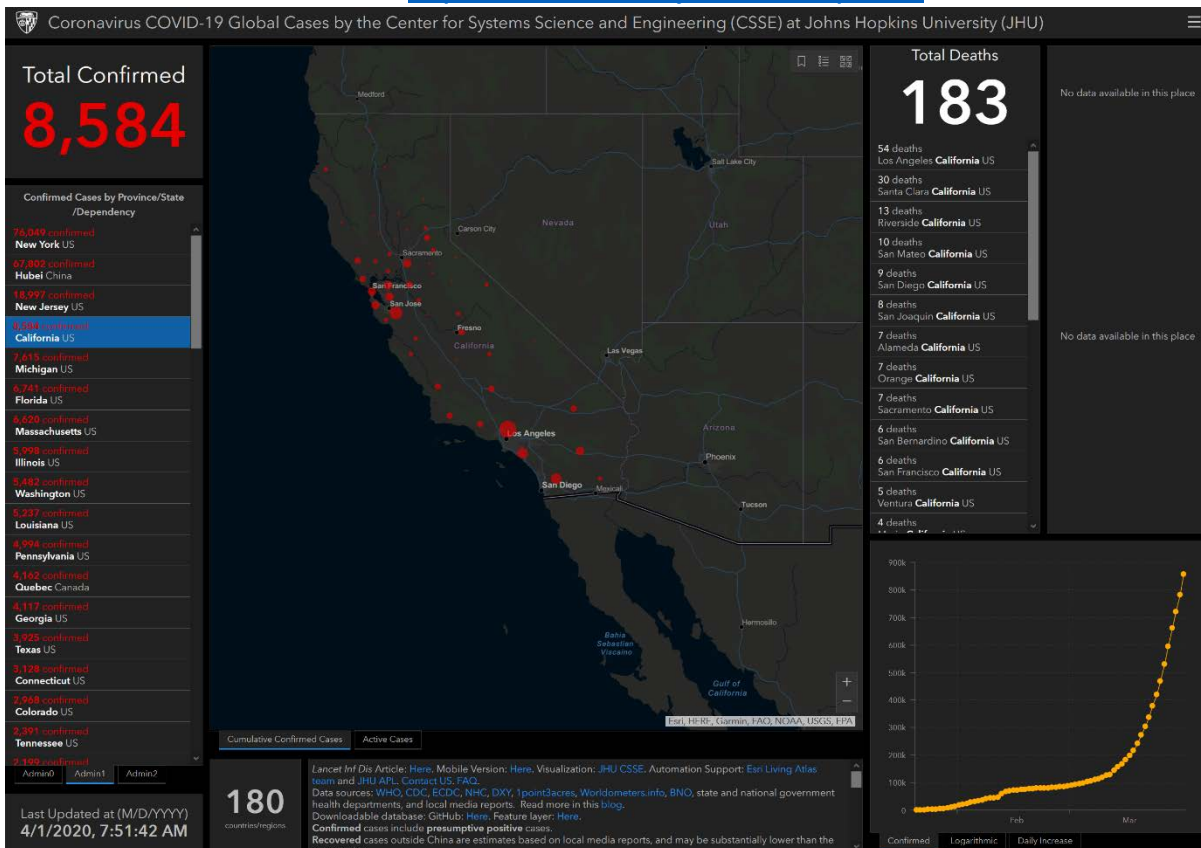
- Age 0-17: 73 cases
- Age 18-49: 3,529 cases
- Age 50-64: 1,765 cases
- Age 65 and older: 1,531 cases
- Unknown/Missing: 34 cases

### Gender of all confirmed positive cases:

- Female: 3,155 cases
- Male: 3,666 cases
- Unknown: 111 cases

## Johns Hopkins mapping 2019-nCoV tool

<https://coronavirus.jhu.edu/map.html>



State	Positive	Negative	Pending	Total Tests (Population)
CA	8,520 28.1%	21,772	57,400	87,692 (39,512,223)



## Testing Data

CA ⓘ

Credits to CovidTracking and DriveThruLocation project

Test Locations: [San Francisco](#) [Palo Alto](#) [Hayward](#) [San Jose](#) [San Mateo](#) [Lake Elsinore](#) [Sacramento](#) [Martinez](#) [San Fernando Valley](#) [L.A. city](#) [L.A. city](#) [L.A. city](#) [L.A. city](#)

<https://coronavirus.1point3acres.com/en/test?state=CA>

2020-23c149c6

UNCLASSIFIED//FOR OFFICIAL USE ONLY

**HOMELAND SECURITY DIVISION UPDATE**

31 MARCH 2020 | 1500 PDT

**(U) CALIFORNIA IMPACTS: CORONAVIRUS DISEASE 2019 (COVID-19)**

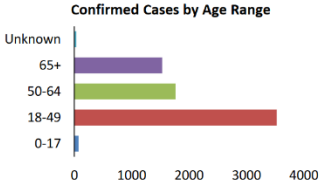
*(U) As of 31 March, 150 deaths have been confirmed in California as a result of COVID-19 infections, as reported by the CDPH. Nationally, there are at least 184,183 cases of novel coronavirus in the US, and at least 3,440 deaths. New anti-malarial drugs and mask cleaning methods were approved in order to combat COVID-19 in the US. The FBI warns of new video teleconference hacks as businesses and schools increasingly turn to online solutions for meetings. Globally, the number of deaths has reached at least 41,261, while cases have increased to 850,583. China has announced they will begin reporting the number of asymptomatic cases after receiving critique that the country was underreporting, while new reports indicate that China has shifted to use "Russian-Style" disinformation tactics amid the COVID-19 outbreak.*

**California Updates (As of 31 March 2020)**

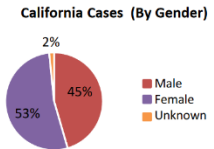
**6,932** confirmed\*  
**(+1,169)**

- 150 deaths (including one non-California resident)
- 49 of 58 counties affected
- 22 state and county labs currently testing

**Confirmed Cases by Age Range**

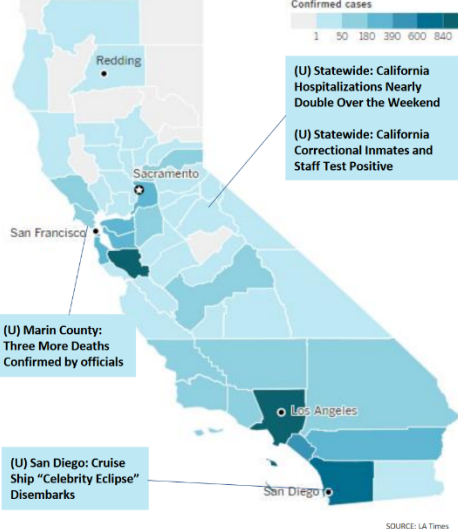


**California Cases (By Gender)**

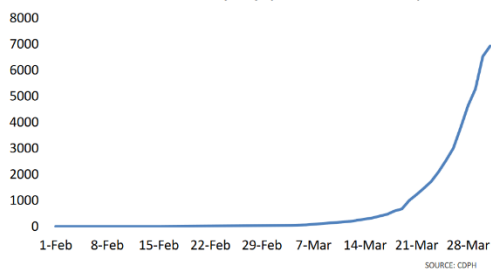


**Confirmed cases**

1 50 180 390 600 840



**Cumulative Cases By Day (As of 31 March 2020)**



SOURCE: CDPH

**National and Global Updates (As of 31 March 2020)**

**US Cases**  
**184,183**  
**(+24,163)**  
confirmed\*

(U) White House Announces One Million Tested, New Mask Disinfection Method  
(U) New COVID-19 Cases in New York appear to be Slowing  
(U) FBI Issues Warning Following Several Reports of Video-Teleconference Hacks  
(U) DHS Moved National Operations Center after Positive Test  
(U) FDA Authorizes Emergency Use of Anti-Malarial Drug

**Global Cases**  
**850,583**  
**(+73,297)**  
confirmed\*

(U) China to Begin Reporting Number of Asymptomatic Cases  
(U) China Shifts to Use "Russian Style" Disinformation Tactics  
(U) Spain Sees Record Increase in COVID-19 Cases  
(U) Mexico Declares "Health Emergency," Suspends Activities  
(U) UK Could Remain Under Emergency Measures for Six Months

\*Data Sources: Johns Hopkins University (JHU), California Department of Public Health (CDPH), Center for Disease Control and Prevention (CDC), World Health Organization (WHO)

STAC 20200326

**WARNING:** This document is the exclusive property of the California State Threat Assessment Center (STAC) and is UNCLASSIFIED//FOR OFFICIAL USE ONLY (U//FOUO). It contains information that may be exempt from public release under the California Public Records Act (Govt. Code Sec. 6250, et seq.). It is to be controlled, stored, handled, transmitted, distributed and disposed of in accordance with STAC policy relating to U//FOUO information and is not to be released to the public, the media, or other personnel who do not have a valid need to know without prior approval of an authorized STAC official.

UNCLASSIFIED//FOR OFFICIAL USE ONLY

Form # e291-459a-a7b2-dc290e734f51

# Governor Newsom Launches Campaign to Protect Health and Well-Being of Older Californians During COVID-19 Pandemic

## Doctors in California are "cautiously hopeful" that shelter at home measures could be working

- Two weeks after San Francisco issued the country's first shelter in place order for residents to prevent spread of the novel coronavirus, hospital emergency rooms throughout the region appear to be seeing the early effects.
- "The surge we have been anticipating has not yet come," Dr. Jahan Fahimi, an emergency physician and medical director at the University of California, San Francisco, told CNN. "We're all kind of together holding our breaths."

## First coronavirus cases reported in Los Angeles homeless population

- Two people experiencing homelessness in Los Angeles are infected with coronavirus – the first known cases among the homeless population in the county, according to Public Health Director Barbara Ferrer.
- Nearly 60,000 people were counted as homeless in Los Angeles County in 2019 — a 12% increase over the previous year.
- Additionally, a person who works in an L.A. County homeless shelter has also contracted the virus.

## Local SOCAL County Updates:

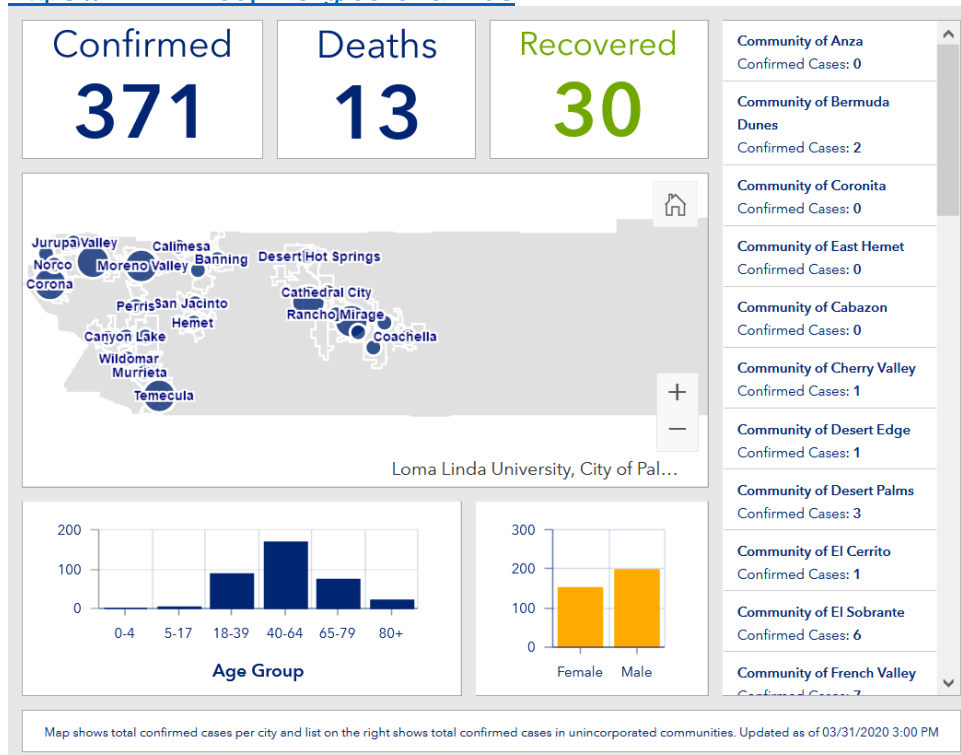
### Riverside County:

#### COVID-19 by the Numbers

Total cases: **371 (220 new)**  
 Total deaths: **13 (8 new)**  
 Estimated Population: 2,424,790

<https://www.rivcoph.org/>

<https://www.rivcoph.org/coronavirus>



## Third drive-up COVID-19 testing site opens in Riverside

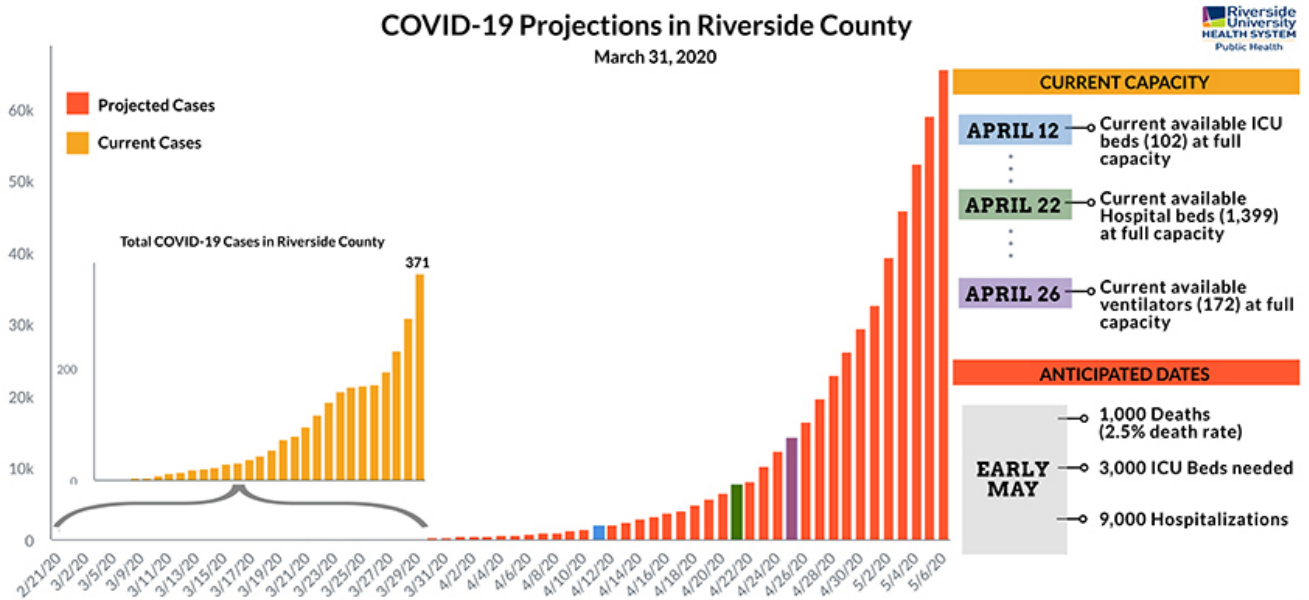
- A third Riverside County community testing site has been established at Harvest Christian Fellowship church in Riverside for residents who want to be tested for coronavirus (COVID-19).
- The Arlington Avenue site will open Wednesday (April 1), but those who want to be tested can call 800-945-6171 for an appointment. Those who want to get tested must have symptoms and have an appointment before showing up at the church parking lot. Drive-ups without appointments cannot be accommodated.

<https://www.rivcoph.org/Portals/0/Documents/CoronaVirus/3.30.20%20Harvest%20drive%20up%20testing%20location.pdf?ver=2020-03-30-154804-780&timestamp=1585608490897>

## Medical donations and medical volunteers needed to prepare for COVID-19 surge

- Riverside County is seeking urgent medical supply donations and medical volunteers to continue its fight during the COVID-19 pandemic.
- “The incoming surge is not fake nor a hoax. It is real and we have to be as prepared as possible,” said Riverside County Board Chair and Fourth District Supervisor V. Manuel Perez. “The need for medical volunteers and medical donations is critical at this point. I have heard from many hospitals and they are all concerned about resources and staffing. Your donations and volunteerism will be greatly appreciated”

[https://www.rivcoph.org/Portals/0/Documents/CoronaVirus/Donations\\_press\\_release.pdf?ver=2020-03-30-164223-993&timestamp=1585611995840](https://www.rivcoph.org/Portals/0/Documents/CoronaVirus/Donations_press_release.pdf?ver=2020-03-30-164223-993&timestamp=1585611995840)



### TODAY

**4.7**  
days

Doubling Time (time it takes for cases to double)

**371**

confirmed COVID-19 cases in Riverside County

**13**

deaths in Riverside County

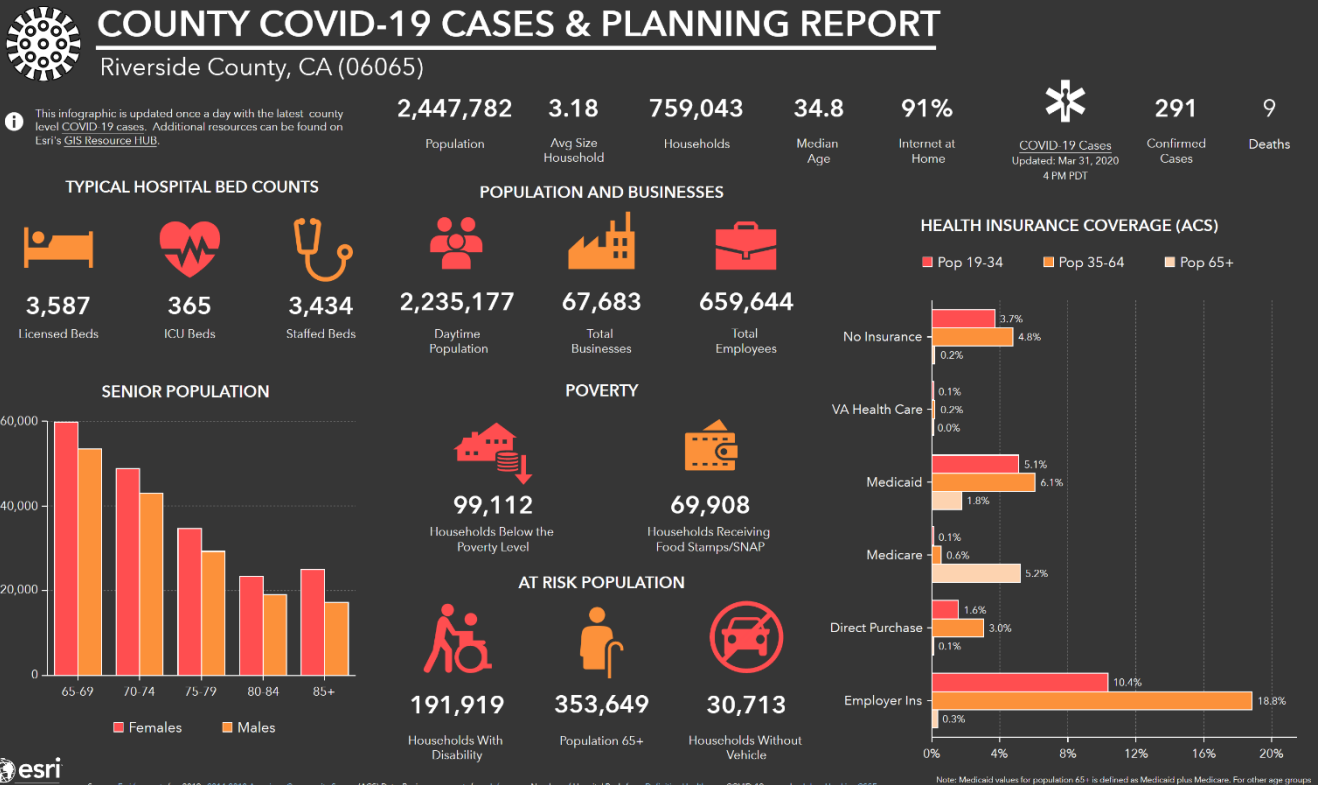
### KEY POINTS

- The above projections are based on our reported cases to date and will change over time.
- Average doubling time for COVID-19 in Riverside County is 4.7 days. This means that if we have 371 cases today, we project we will have about 742 cases in 5 days.
- Predictive modeling helps us better prepare for staffing, equipment and space in anticipation of a likely surge in COVID-19 cases.
- May projections are based on an assumption that doubling time remains the same.
- Preventive measures, such as regular hand washing, staying at home, social distancing, and covering the face can all help to "flatten the curve" by increasing the doubling time.

**STAY IN PLACE** → **MAINTAIN YOUR SPACE** → **COVER YOUR FACE**

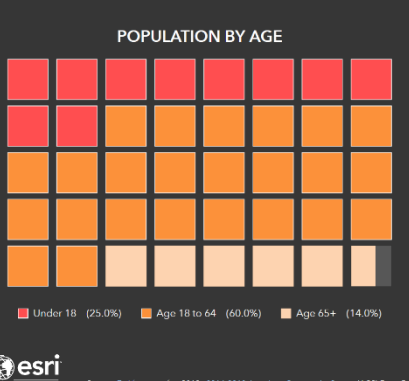
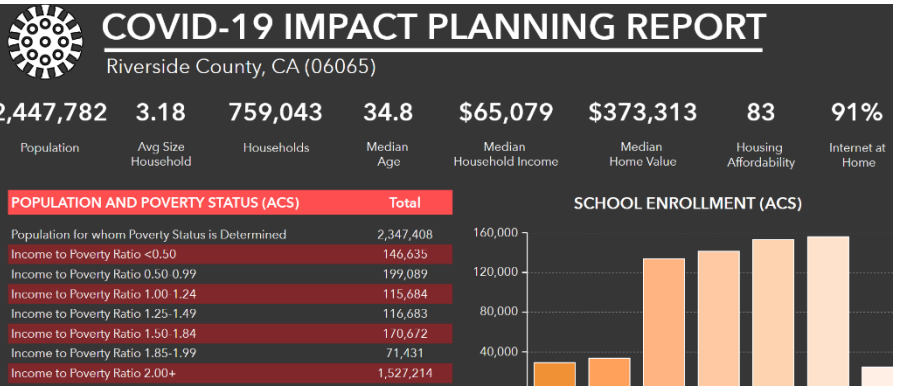
[https://www.rivcoph.org/Portals/0/Images/coronavirus/COVID-19\\_Modeling\\_Infographic\\_large.jpg](https://www.rivcoph.org/Portals/0/Images/coronavirus/COVID-19_Modeling_Infographic_large.jpg)





### LANGUAGE (ACS)

	Age 5-17	18-64	Age 65+	Total
<b>English Only</b>	277,050	805,701	238,730	1,321,481
<b>Spanish</b>	161,677	528,737	59,390	749,804
Spanish & English Well	155,191	404,605	31,957	591,753
Spanish & English Not Well	5,394	76,865	12,164	94,423
<b>Indo-European</b>	4,268	30,183	11,604	46,055
Indo-European & English Well	4,120	27,905	9,602	41,627
Indo-Euro & English Not Well	109	1,651	1,453	3,213
<b>Asian-Pacific Island</b>	10,221	65,894	16,406	92,521
Asian-Pacific Isl & English Well	9,466	54,905	11,335	75,706
Asen-Pacific Isl & English Not Well	742	8,998	3,645	13,285
<b>Other Language</b>	2,584	10,354	2,479	15,417
Other Language & English Well	2,428	9,345	1,864	13,637
Other Lang. & English Not Well	154	659	343	1,156



### POVERTY LEVELS (ACS)

	Below	Above	Total
Total	99,112	619,237	718,349
Married Couple Families	28,361	359,766	388,127
Other Families w/Male Householder	6,476	36,420	42,896
Other Families w/Female Householder	24,315	69,219	93,534
Nonfamilies w/Male Householder	16,476	75,579	92,055
Nonfamilies w/Female Householder	23,484	78,253	101,737

### NO HEALTH INSURANCE COVERAGE (ACS) %

Population	%	Total
Population <19	1.4%	32,976
Population Age 19-34	3.7%	87,588
Population Age 35-64	4.8%	112,387
Population Age 65+	0.2%	4,354





**Riverside County!  
Need (Non-Medical) Help during the COVID-19 Crisis?  
Call Now for Help! 24/7!**

<b>Riverside County Coronavirus Info Line</b>	<b>call 211</b>
<b>Riverside County Crisis and Suicide Helpline</b>	<b>951-686-HELP 951-686-4357</b>
<b>Riverside Area Rape Crisis Center Hotline</b>	<b>951-686-7273</b>
<b>Child help Child Abuse Hotline</b>	<b>1-800-4ACHILD 1-800-422-4453</b>
<b>National Suicide Prevention Lifeline</b>	<b>1-800-273-TALK 1-800-273-8255</b>
<b>National Domestic Violence Hotline</b>	<b>1-800-799-SAFE 1-800-799-7233</b>
<b>Trevor Line for LGBTQIA+ youth</b>	<b>1-866-488-7386</b>
<b>Crisis Text Line</b>	<b>Text Horne to 74174</b>
<b>Senior Citizen Crisis &amp; Talk Line</b>	<b>800-971-0016</b>
<b>CONTACT (Loneliness) Helpline</b>	<b>800-932-4616</b>

# San Luis Obispo County:

## COVID-19 by the Numbers

**Total cases** **80** (9 new)

**Total deaths**

<https://www.emergencyslo.org/en/covid19.aspx>


### Current Situation

As of 3/31/20 at 12:00 pm

 **80**  
Confirmed cases

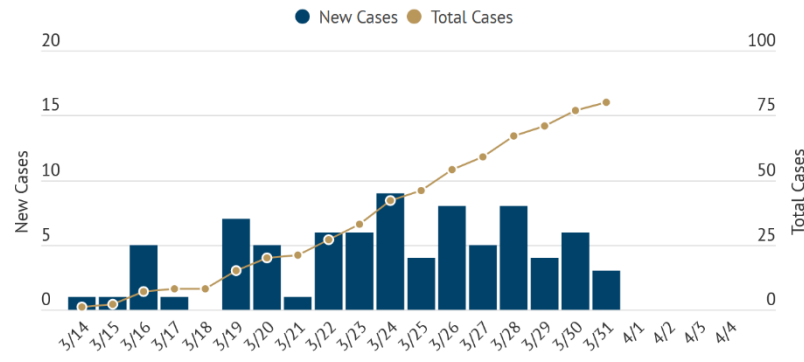
 **40**  
Home


 **30**  
Recovered

 **10**  
Hospitalized (2 in ICU)

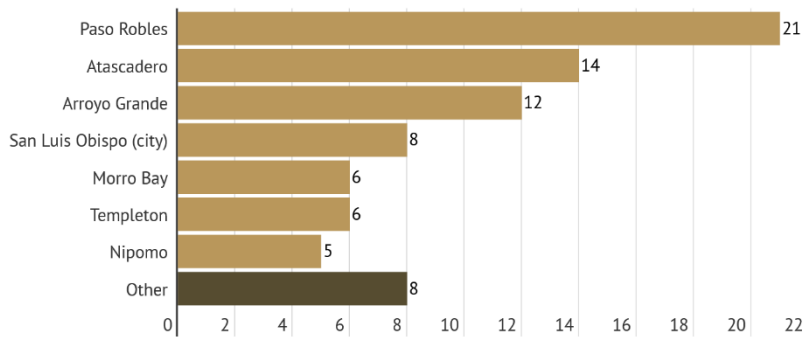
 **0**  
Deaths

New vs. Total Confirmed Cases



 Download data

Cases by City or Town



# Kern County:

**Total cases** **107** (57 new)

**Total deaths** **1** (1 new)

<https://kernpublichealth.com/2019-novel-coronavirus/>

Updated twice Daily by 10:00 AM and 4:00 PM and once daily and weekends by 10:00 AM

Positives Detected Among Kern Residents	Positives Detected Among Non-Residents	Deaths Among Kern Residents	Number of Negative Tests	Number of Pending Tests*	Number of Total Tests*
<b>107</b>	<b>3</b>	<b>1</b>	<b>1881</b>	<b>1254</b>	<b>3245</b>

Updated on 4/1/2020 9:30:00 AM

Updated twice daily on weekdays by 10:00 AM and 4:00 PM and once daily on weekends by 10:00 AM

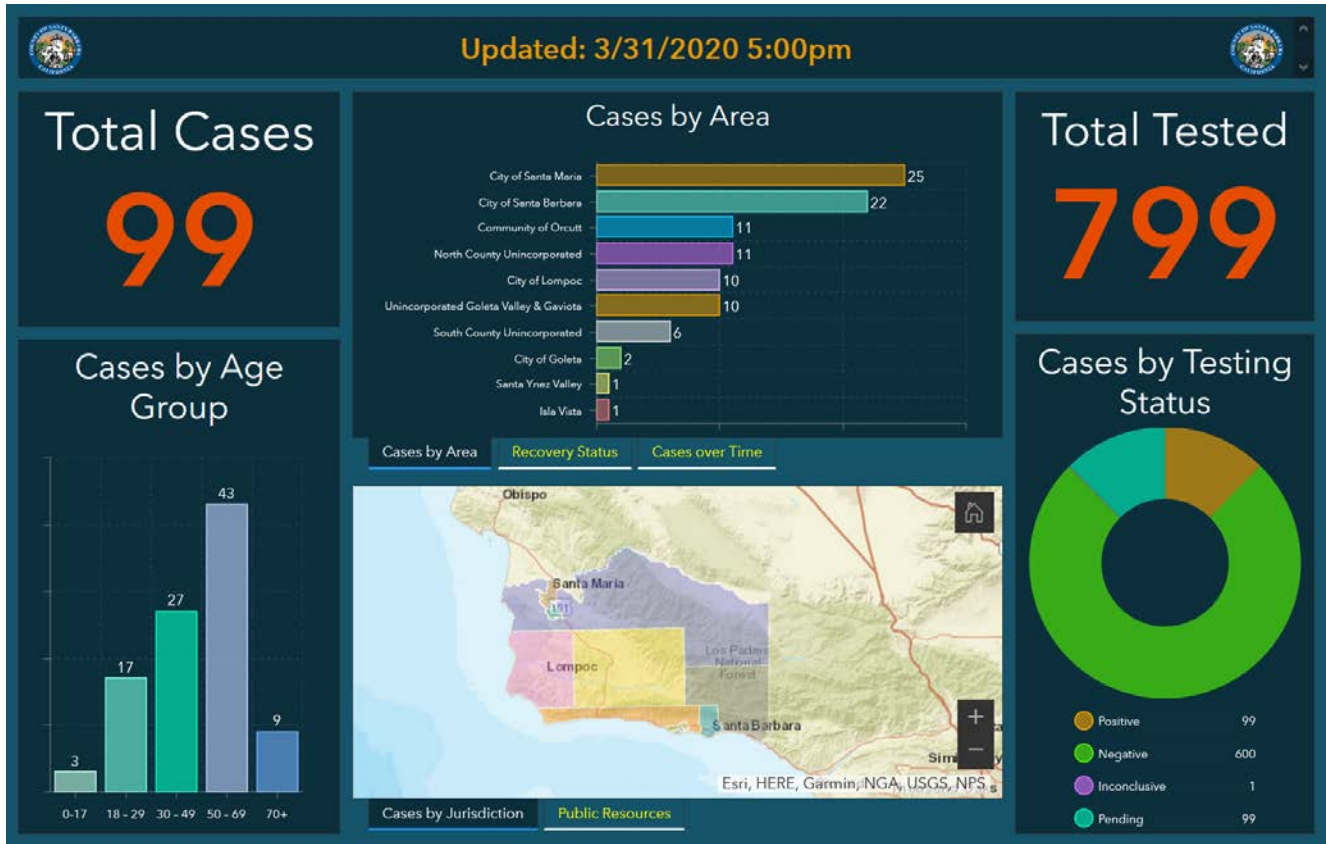
\* As reported by community healthcare providers. This is preliminary data and is subject to change.

# Santa Barbara County:

Total cases **99** (31 new)

Total deaths

<https://publichealthsb.org/>

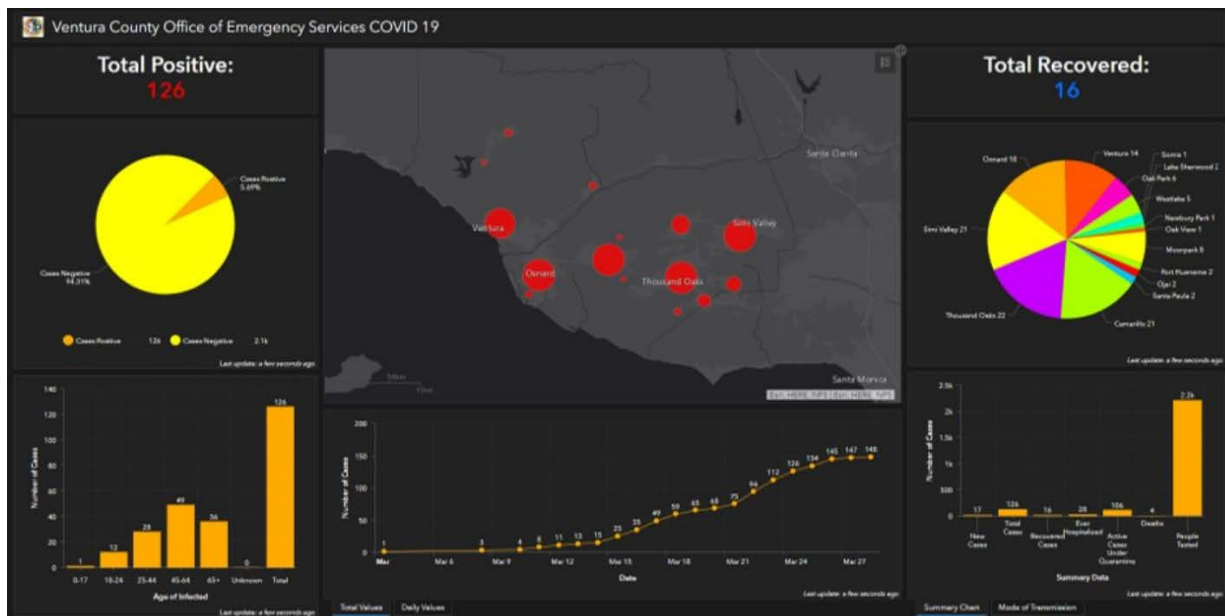


# Ventura County

Total cases **149** (60 new)

Total deaths **5** (1 new)

<https://www.vcemergency.com/>



**Current Status of 2019 Novel Coronavirus (COVID-19) in Ventura County**  
(Updated Tuesday, March 31, 2020 5:05 p.m.)

Summary Data	#	Confirmed Cases	#	City	#	City/Unincorporated Area	#
New Cases	23	Travel Related	8	Camarillo	24	Camarillo	24
<b>TOTAL CASES</b>	<b>149</b>	Person-to-person acquired	31	Moorpark	10	Lake Sherwood	2
Recovered Cases	27	Community acquired	33	Ojai	2	Moorpark	10
Ever Hospitalized	30	Under investigation	77	Oxnard	23	Newbury Park	3
Active Cases Under Quarantine	117	<b>Total</b>	<b>149</b>	Port Hueneme	2	Oak Park	6
<b>DEATHS</b>	<b>5</b>			Santa Paula	2	Oak View	1
People Tested	2,987			Simi Valley	24	Ojai	2
		<b>Cases by Age</b>	<b>#</b>	Thousand Oaks	33	Oxnard	23
		Age 0-17	1	Ventura	15	Piru	1
		Age 18-24	15	Unincorporated Area – West	2	Port Hueneme	2
		Age 25-44	35	Unincorporated Area – East	12	Santa Paula	2
		Age 45-64	57	<b>Total</b>	<b>149</b>	Simi Valley	24
		Age 65+	41			Somis	1
		Unknown	0			Thousand Oaks	33
		<b>Total</b>	<b>149</b>			Ventura	15
						<b>Total</b>	<b>149</b>

**Los Angeles County:**

**Total cases**                      **3011 (1795 new)**

**Total deaths**                      **54 (33 new)**

<http://publichealth.lacounty.gov/media/Coronavirus/>

As of 12pm 03/22 including cases reported by Long Beach and Pasadena Health Departments

**Novel Coronavirus in Los Angeles County\***

**3011**  
Cases\*\*

**54**  
Deaths

As of 12pm 3/31

\*including cases reported by Long Beach and Pasadena Health Departments

\*\* includes deaths

Locations	Cases
<b>Laboratory Confirmed Cases (LCC)</b>	3011
- Los Angeles County (excl. LB and Pas)	2871*
- Long Beach	115
- Pasadena	25

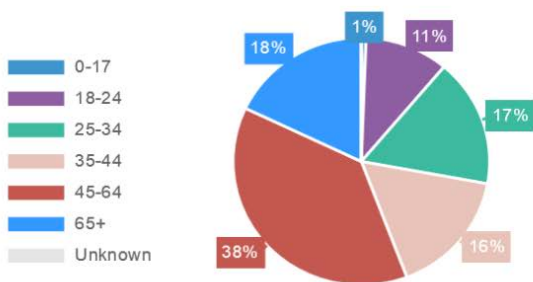
# Orange County:

**Total cases** 502 (42 new)  
**Total deaths** 7 (3 new)

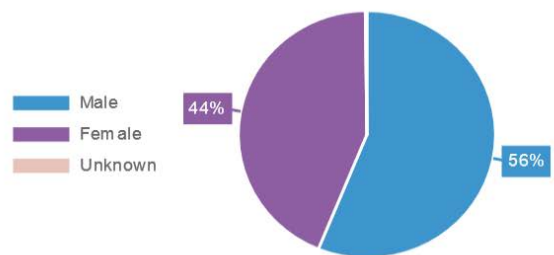
[https://www.ochealthinfo.com/phs/about/epidasmt/epi/dip/prevention/novel\\_coronavirus](https://www.ochealthinfo.com/phs/about/epidasmt/epi/dip/prevention/novel_coronavirus)



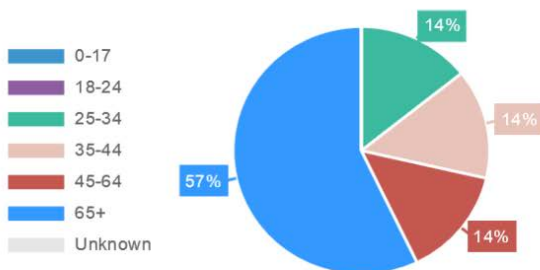
Cumulative COVID-19 Cases by Age



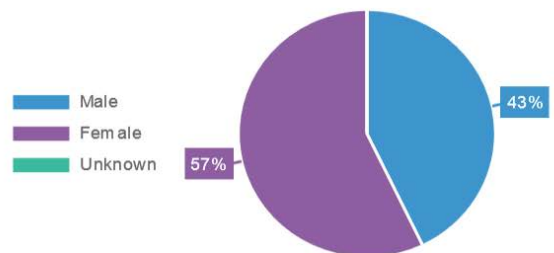
Cumulative COVID-19 Cases by Sex



Cumulative COVID-19 Deaths by Age



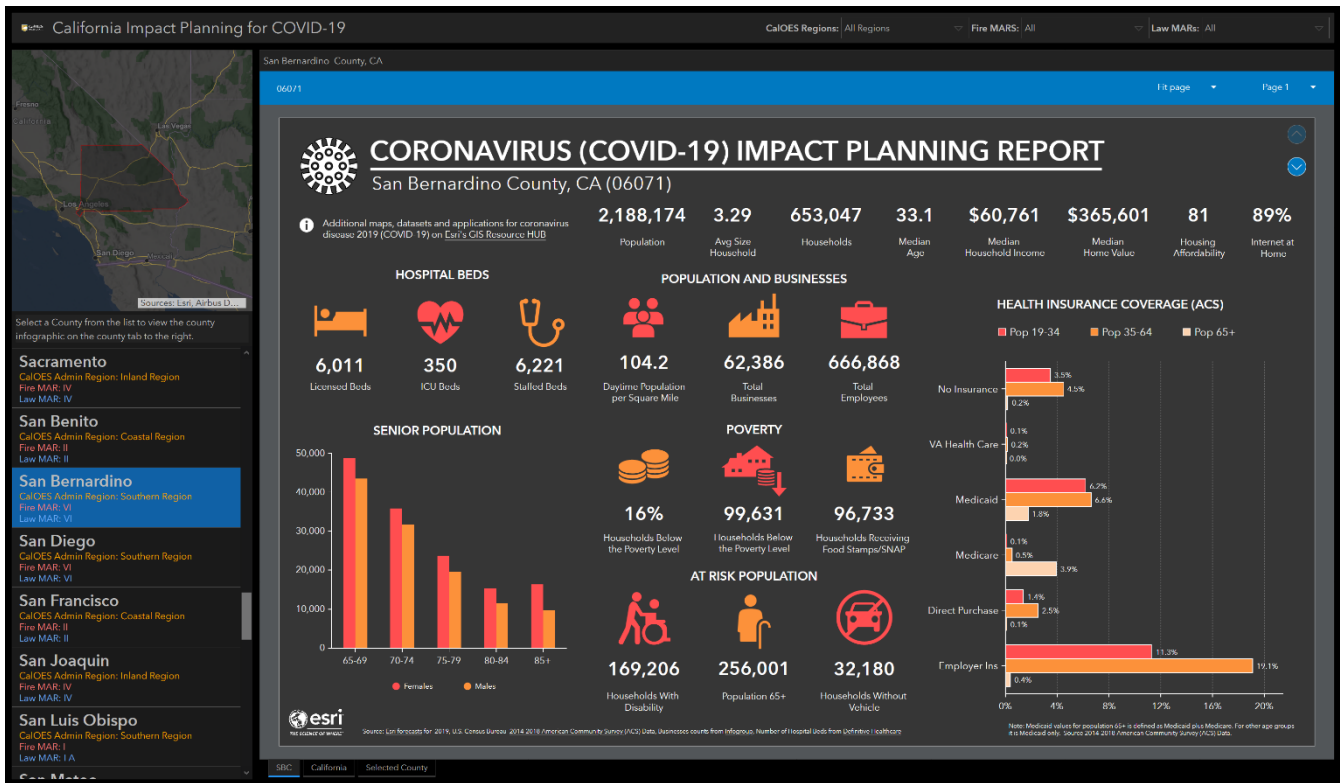
Cumulative COVID-19 Deaths by Sex



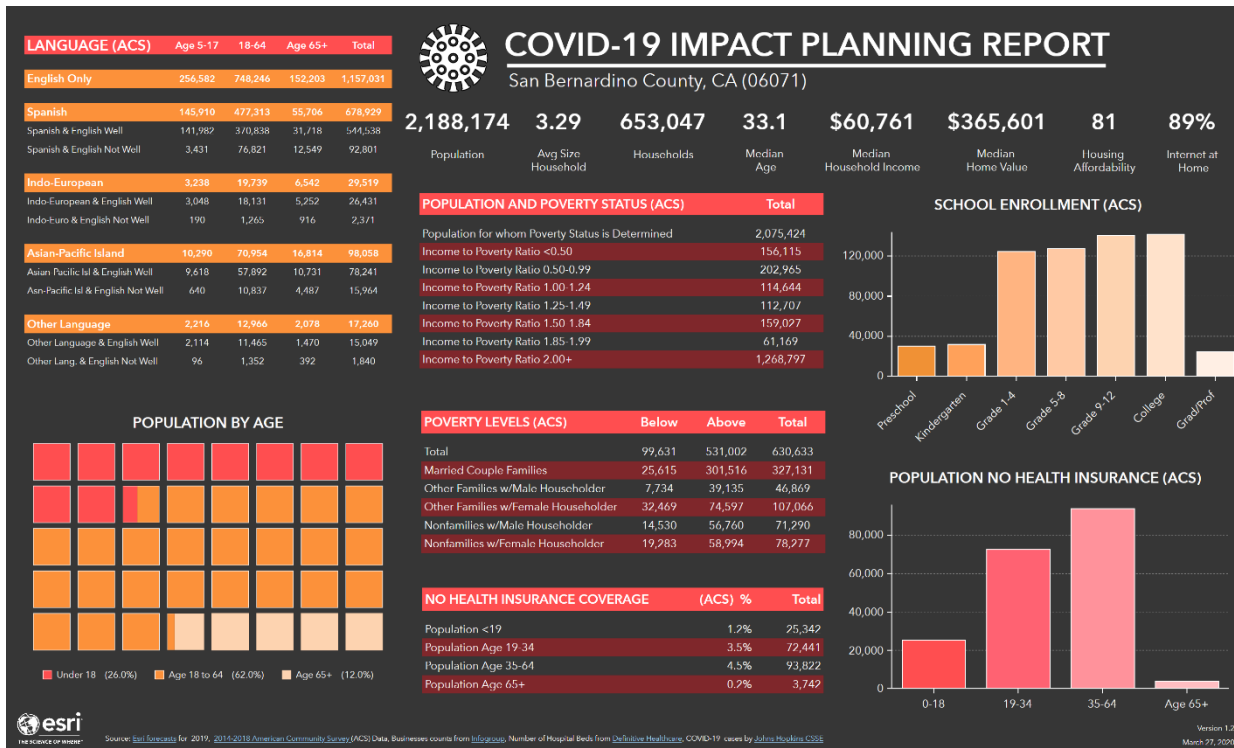


# San Bernardino County:

**Total cases 183 (127 new)**  
**Total deaths 6 (3 new)**  
<http://wp.sbcounty.gov/dph/coronavirus/>



<https://sbcp.maps.arcgis.com/apps/opstdashboard/index.html#/44bb35c804c44c8281da6d82ee602dff>



<https://bao.arcgis.com/covid-19/us/county/06071.html>

## Imperial County:

**Total cases**      **38**    **(13 new)**

**Total deaths**

<http://www.icphd.org/health-information-and-resources/healthy-facts/covid-19>

Persons Under Investigation (PUIs) in Imperial County Coronavirus Disease 2019 (COVID-19) Updated March 31, 2020   5:31PM	
Positive (Confirmed Cases) <i>Positivos (Casos confirmados)</i>	38*
Pending Results <i>Resultados pendientes</i>	14 <sup>∞</sup>
Negative <i>Negativos</i>	177*
<b>Total Tested</b>	<b>229</b>

## San Diego County:

**Total cases**      **734**    **(215 new)**

**Total deaths**      **9**    **(2 new)**

Data is updated daily around 4:00 p.m.

<https://www.sandiegocounty.gov/hhsa/programs/phs/>

[https://www.sandiegocounty.gov/content/sdc/hhsa/programs/phs/community\\_epidemiology/dc/2019-nCoV/status.html](https://www.sandiegocounty.gov/content/sdc/hhsa/programs/phs/community_epidemiology/dc/2019-nCoV/status.html)

Positive Cases in San Diego County Since February 14, 2020 Coronavirus Disease 2019 (COVID-19) <i>Table updated March 31, 2020, with data through March 30, 2020.</i>	
COVID-19 Case Summary	San Diego County Residents
<b>Total Positives</b>	<b>734</b>
<b>Age Groups</b>	
0-9 years	5
10-19 years	7
20-29 years	144
30-39 years	174
40-49 years	130
50-59 years	116
60-69 years	74
70-79 years	49
80+ years	34
Age Unknown	1
<b>Gender</b>	
Female	317
Male	414
Unknown	3
Hospitalizations	136
Intensive Care	56
Deaths	9

## Education Updates:

### California Community Colleges Chancellor's Office (CCCCO)

- Established a website for COVID-19:  
<https://www.cccco.edu/About-Us/Chancellors-Office/Divisions/Communications-and-Marketing/Novel-Coronavirus>

Items from the California Community Colleges Chancellor's Office webinar.

## Statewide Technology Resources



- HP Chromebook - \$154.99 Email: [David.muszel@staples.com](mailto:David.muszel@staples.com) or PH: 916-215-3334
- Cranium Café - Online face-to-face meetings - email [mike@connexed.com](mailto:mike@connexed.com)
- Linksystems (NetTutor) - Online tutoring - email [cmyers@link-systems.com](mailto:cmyers@link-systems.com)
- Proctorio - automated proctorless software - email [josh@proctorio.com](mailto:josh@proctorio.com) for more information.
- GrackleDocs - create accessible content - email [gbarker@grackledocs.com](mailto:gbarker@grackledocs.com)
- Pronto (by Hitlabs) - student communication platform/tool - email [porter@pronto.io](mailto:porter@pronto.io)
- Adobe Enterprise (for Colleges) - virtual platform - email [syork@cland.com](mailto:syork@cland.com)



## Statewide Technology Resources – cont.

- Microsoft Enterprise (for Colleges) - enterprise license - email ([syork@cland.com](mailto:syork@cland.com)).
- CA Connects Mobile Hotspots - mobile hotspot) - email [bchaponot@foundationccc.org](mailto:bchaponot@foundationccc.org)
- Adobe for Students - \$39.99 for 6 months access - email [bchaponot@foundationccc.org](mailto:bchaponot@foundationccc.org)
- Regroup - Mass communication system - email [abravo@regroup.com](mailto:abravo@regroup.com) for more information.
- CC Group - Virtual sign language interpreting services - email [connie@yourccgroup.com](mailto:connie@yourccgroup.com)
- Xfinity Wi-Fi Public Hotspots - Available public hotspots - visit <https://wifi.xfinity.com/>
- T-Mobile Wi-Fi Hotspots - free HotSpot with monthly plan of \$29.75/month - email [Darrin.Meintser@T-Mobile.com](mailto:Darrin.Meintser@T-Mobile.com)



## Chancellor's Office Work in Progress

- Temporary Distance Education Blanket Addendum\*
- Implementation of BRN flexibility\*
- Reporting Deadlines and Extensions on grants and programs\*
- Flexibility for categorical program requirements\*
- Dual Enrollment/Middle College
- Work Study for credit students\*
- Grades relevant to financial aid\*
- Attendance Accounting\*
- Impact of FON penalties on districts
- PT faculty 67% rule



## Chat Box Q & A

California Community Colleges faculty, staff, and administrators will find resources and information within the Vision Resource Center and the recording of this webinar. Visit [visionresourcecenter.cccco.edu](https://visionresourcecenter.cccco.edu) for additional responses to webinar questions.

After logging in, under the “Connect” menu, visit “All Communities” and look for the “CCC | COVID-19 Resources, Tools, and Discussion.” Select the community and then click “Join Community” to access the content.





- Labster's virtual labs are ready to go and we're on boarding via a URL
- About superintendent public announcement that the K-12 system will in effect be closed to the month of June. What does that mean to us?
  - A: It means we need to reflect on what is happening across the state and think about this crisis as extending significantly into the future and given the K-12 system will be effectively closed for the rest of the term. We should ensure that we are making sure that appearances in our colleges have flexibility to continue to support their kids who are not going to be in school.
- **We will likely be at a stay-at-home order into the month of June and we need to anticipate that.**
- It is incumbent upon us to think of everything that is happening and everything are used to doing and think of how we're going to make it accessible to our communities and our students.
- Commencement's. We need to seriously think about how we're going to handle commitments because it is very unlikely with their commencement is in May or June that you will be able to have a traditional commencement.
  - You should be planning now. What that means to your college in your community and how you want to handle that because it will not be in the traditional sense.

### **Allan Hancock College**

- Established a website at <https://www.hancockcollege.edu/covid/>

### **Cerro Coso Community College**

(Cerro Coso College)

- Established a website at <https://www.cerrocoso.edu/campus-safety/coronavirus-covid-19-updates>

### **Cerritos Community College District**

(Cerritos College)

- Established a website at <https://www.cerritos.edu/shs/covid-19.htm>

### **Chaffey College Community College District**

(Chaffey College)

- Established a website at <https://www.chaffey.edu/coronavirus/index.shtml>

### **Citrus College Community College District**

(Citrus College)

- Established a website at <https://www.citruscollege.edu/covid19/Pages/default.aspx>



## **Coast Community College District**

(Coastline College, Golden West College, Orange Coast College)

- Established a website at <https://www.cccd.edu/aboutus/novelcoronavirus/Pages/default.aspx>

## **Compton Community College District**

(Compton College)

- Established a website at <http://www.compton.edu//adminandoperations/campuspolice/covid-19.aspx>

## **El Camino Community College District**

(El Camino College)

- Established a website at <http://www.elcamino.edu/notices/coronavirus/>

## **Glendale Community College District**

(Glendale Community College)

- Established a website at <https://www.glendale.edu/students/student-services/health-center/what-you-need-to-know>

## **Los Angeles Community College District**

(Los Angeles City College, Los Angeles Southwest College, East Los Angeles College, Los Angeles Trade-Tech College, Los Angeles Harbor College, Los Angeles Valley College, Los Angeles Mission College, West Los Angeles College, Los Angeles Pierce College)

- Established a website at <http://www.laccd.edu/About/News/Pages/Coronavirus.aspx>

## **Kern Community College District**

(Bakersfield College)

- Established a website at <https://www.bakersfieldcollege.edu/covid19>

## **Long Beach Community College District**

(Long Beach City College)

- Established a website at <https://www.lbcc.edu/coronavirus>

## **MiraCosta College District**

(MiraCosta College)

- Established a website at <http://www.miracosta.edu/officeofthepresident/pio/press.aspx?id=2958>

## **Mt. San Antonio College**

(Mt. San Antonio College)

- Established a website at [https://www.mtsac.edu/newsroom/news/posts/coronavirus\\_update.html](https://www.mtsac.edu/newsroom/news/posts/coronavirus_update.html)

## **Mt. San Jacinto Community College District**

(Mt. San Jacinto Community College)

- Established a website at <https://www.msac.edu/coronavirus/>

## **North Orange County Community College District**

(Cypress College, Fullerton College, North Orange Continuing Education)

- Established a website at <https://coronavirus.fullcoll.edu/>

## **Pasadena Area Community College District**

(Pasadena City College)

- <https://pasadena.edu/about/president/coronavirus-updates/index.php>

## **Rancho Santiago Community College District**

(Santa Ana College, Santiago Canyon College)

- Established a website at <https://www.rscdd.edu/Coronavirus/Pages/default.aspx>

## **Rio Hondo Community College District**

(Rio Hondo College)

Established a website at <https://www.riohondo.edu/student-health-services/coronavirus/>

## **Riverside Community College District**

(Norco College, Riverside City College, Moreno Valley College)

- Established a website at [https://www.rccd.edu/admin/bfs/risk/Pages/covid\\_19.aspx](https://www.rccd.edu/admin/bfs/risk/Pages/covid_19.aspx)

## **San Bernardino Community College District**

(Crafton Hills College, San Bernardino Valley College)

- Established a website at [http://www.sbccd.org/Human\\_Resources-Jobs/employee-labor-relations/safetyrisk/Coronavirus\\_Updates](http://www.sbccd.org/Human_Resources-Jobs/employee-labor-relations/safetyrisk/Coronavirus_Updates)

## **San Luis Obispo County Community College District**

(Cuesta College)

- Established a website at <https://www.cuesta.edu/covid-19.html>

## **Santa Barbara City College**

- Established a website at <http://www.sbccc.edu/newsandevents/covid-19/>

## **Santa Monica College**

- Established a website <http://www.smc.edu/NewsRoom/coronavirus/Pages/default.aspx>

## **South Orange County Community College District**

(Irvine Valley College, Saddleback College)

- Established a website at [https://www.socccd.edu/about/about\\_covid-19.html](https://www.socccd.edu/about/about_covid-19.html)

## **Victor Community College District**

(Victor Valley College)

- Established a website at <http://vvcforme.com/pubinfomktg/2020/03/09/victor-valley-college-coronavirus-covid-19-information/>

## **West Kern Community College District**

(Taft College) - <http://www.taftcollege.edu/>

## **University of California System (UC)**

- UC has established a website that compiles public info at: <https://ucnet.universityofcalifornia.edu/news/2020/01/ucs-response-to-coronavirus.html>

### **UC Irvine**

- Established a website at <https://uci.edu/coronavirus/>

### **UC Los Angeles**

- Established a website at <https://newsroom.ucla.edu/stories/coronavirus-information-for-the-ucla-campus-community>

### **UC Riverside:**

- Established a website at <https://ehs.ucr.edu/coronavirus>

### **UC San Diego**

- Established a website at <https://coronavirus.ucsd.edu/>

### **UC Santa Barbara**

- Established a website at <https://ucsb.edu/COVID-19-information>

## **State University System (CSU)**

- Established a website at <https://www2.calstate.edu/coronavirus>

### **CS Fullerton**

- Established a website at <http://coronavirus.fullerton.edu/>

## **Riverside County Office of Education (RCOE)**

- RCOE is offering meal service to students at six locations throughout the County of Riverside. Food service will be from 8:30 am to 11:30 am starting March 17. The locations below will provide two breakfast meals and two lunch meals per student so that one trip will last two days.
  - Riverside: Arlington Regional Learning Center, 6511 Arlington Ave. Riverside 92503
  - Hemet and San Jacinto: Betty Gibbel Regional Learning Center 1251 Eagle Dr., San Jacinto 92583
  - Southern Riverside County: David Long Regional Learning Center 41350 Guava St., Murrieta, 92562
  - Indio and Coachella Valley: Don Kenny Regional Learning Center 47336 Oasis St., Indio, 92562
  - Perris and Moreno Valley: Val Verde Regional Learning Center 3010 Webster Ave., Perris, 92571
  - Palm Springs: Palm Springs Community School 1800 Vista Chino, Palm Springs, 92262.Meals will be distributed at the front of the school in a to-go style.

**CBU:**

- Established a website at [https://calbaptist.edu/news/cbu\\_update\\_coronavirus\\_1](https://calbaptist.edu/news/cbu_update_coronavirus_1).

**La Sierra University:**

- Established a website at <https://lasierra.edu/response-to-covid-19/>.

**University of La Verne:**


- Established a website at <https://laverne.edu/health/coronavirus/>.

**Regional Weather**

**COVID-19  
Weather  
Support**

**Issued:**  
**1100 am March 31, 2020**

NATIONAL  
WEATHER SERVICE  
SAN DIEGO, CA



**IMPACT SCALE**

●  
None

●  
Minor

●  
Moderate

●  
High

●  
Extreme

**Resources**

<https://www.weather.gov/spot/>  
<https://inws.ncep.noaa.gov>  
<https://www.wrh.noaa.gov/spx/event/dsstable.php>

**(858) 675 - 8705**  
*(24/7, Restricted)*

**Weather.gov/SanDiego**

**7-day forecast for Counties in far southwest CA**

Period March 31 - April 7 (24-hr)	Orange	SW San Bernardino	All Deserts	Western Riverside	San Diego
Today	NONE	NONE	Warm	NONE	NONE
Wednesday	NONE	Wind - Mtn	Wind Warm	Wind -Mtn	Wind -Mtn
Thursday	NONE	NONE	NONE	NONE	NONE
Friday	NONE	NONE	NONE	NONE	NONE
Saturday	NONE	NONE	NONE	NONE	NONE
Sunday	Showers at night	Showers at night	Showers at night	Showers at night	Showers at night
Monday	Showers Wind	Showers Wind	Showers Wind	Showers Wind	Showers Wind
Tuesday	Showers Wind	Showers Wind	Showers Wind	Showers Wind	Showers Wind

**Forecast Discussion**

Dry and warmer conditions will prevail this week. Temperatures will peak today through Wednesday, then slowly cool. Gusty west winds will impact the mountains and deserts (especially the Mojave) with gusts of 25-35 mph Wednesday afternoon/evening. Some light showers, gusty west winds, and colder temps arrive during the early part of next week.