

**Daily Situation Summary
March 25 2020 @ 10:00**

Coronavirus Disease 2019 (COVID-19)



Always check with trusted sources for the latest accurate information about novel coronavirus.

- **World Health Organization**
- **Centers for Disease Control and Prevention**
- **California Department of Public Health**
- **County Department/Public Health**
- **Residents in most counties can call 2-1-1**

This can't be real? Fact-checking resources.

- <https://www.boomlive.in/>
- <https://www.snopes.com/>

Global Update:

Total and new cases as of date on the graphic below

Total cases: 375,498 (40,517 new)
Total deaths: 16,362 (1,710 new)

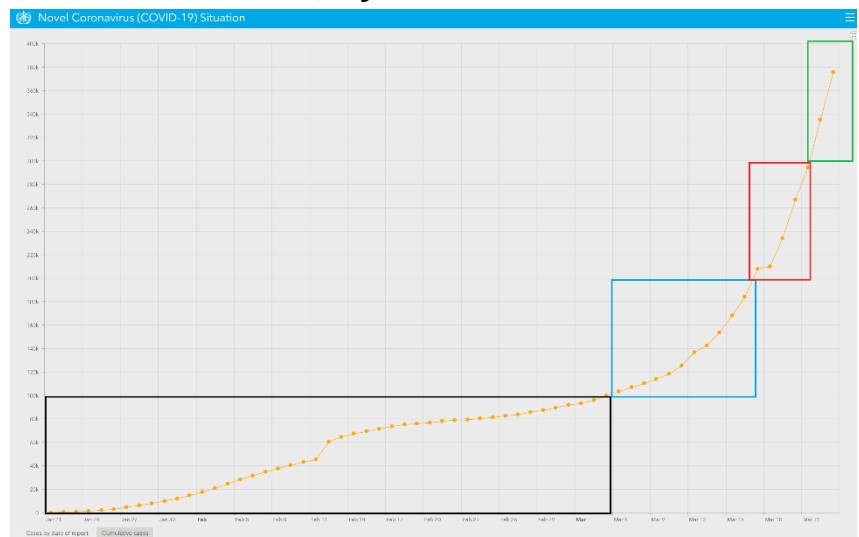


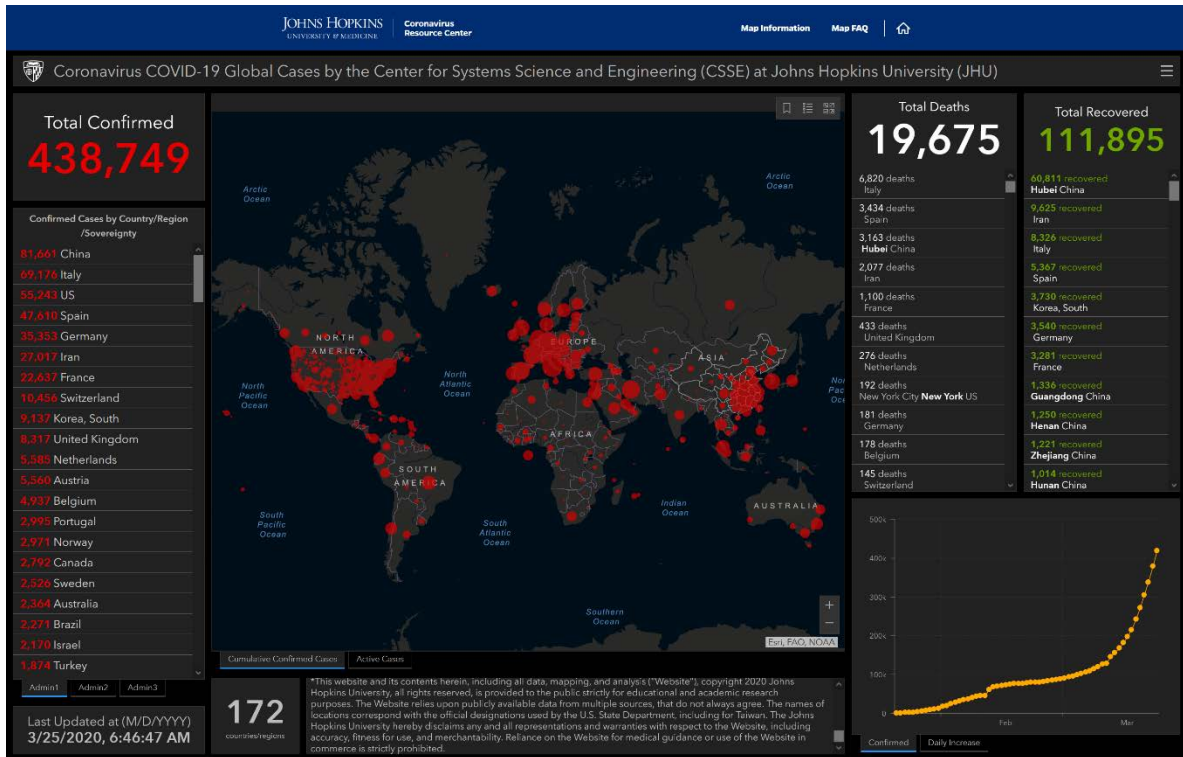
Data Source - WHO

[https://www.who.int/redirect-pages/page/novel-coronavirus-\(covid-19\)-situation-dashboard](https://www.who.int/redirect-pages/page/novel-coronavirus-(covid-19)-situation-dashboard)

Estimated epidemic curve cases of COVID-19, by date.

- First 100,000 cases (December 30, 2019 to March 6, 2020) 3 Months
- Second 100,000 cases (March 6, 2020 to March 17, 2020) 11 Days
- Third 100,000 cases (March 17, 2020 to March 21, 2020) 4 Days
- *Fourth 100,000 cases (March 21, 2020 to March 24, 2020) 3 Days Expected based on data trending





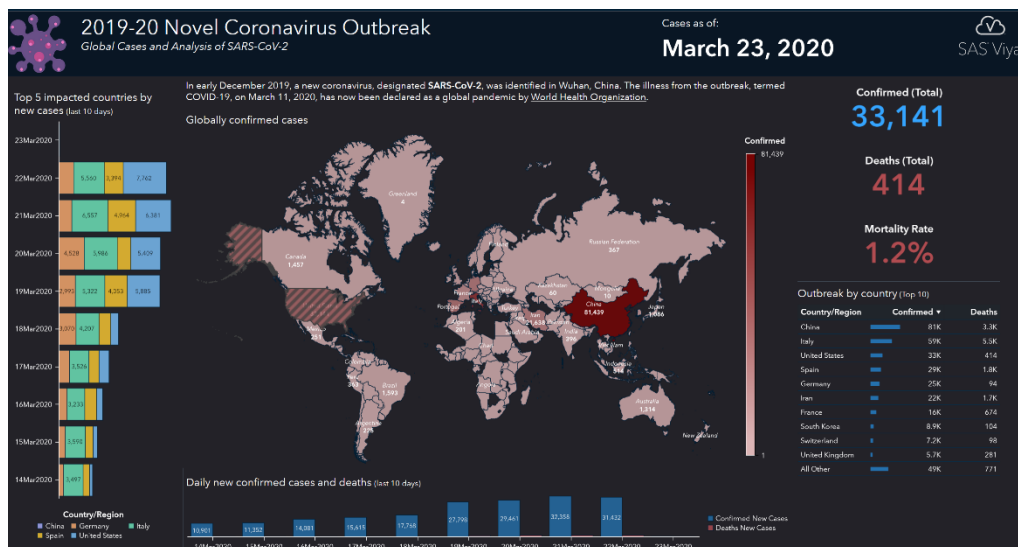
Data source Johns Hopkins.

Johns Hopkins data sources: [WHO](#), [CDC](#), [ECDC](#), [NHC](#), [DXY](#), [1point3acres](#), [Worldometers.info](#), [BNO](#), state and national government health departments, and local media reports. Read more in this [blog](#).

Confirmed cases include **presumptive positive** cases.

Recovered cases outside China are estimates based on local media reports, and may be substantially lower than the true number.

Active cases = total confirmed - total recovered - total deaths.



<https://tbus.sas.com/COVID19/>

National Update:

Cases of COVID-19 Reported in the US, by Source of Exposure

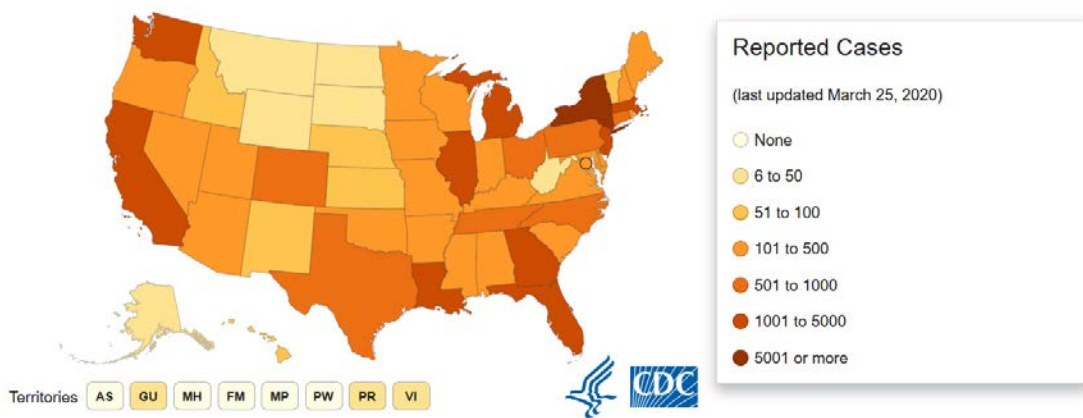
Total and new cases in last 24 hours

Travel-related	449	(112 new)
Close contact	539	(218 new)
Under investigation	32,416	(17,855 new)
Total cases	33,404	(18,185 new)
Total deaths:	400	(199 new)

Reporting cases: 54 (50 states, DC, Puerto Rico, Guam, & Virgin Islands)

Numbers close out at 4 p.m. the day before reporting

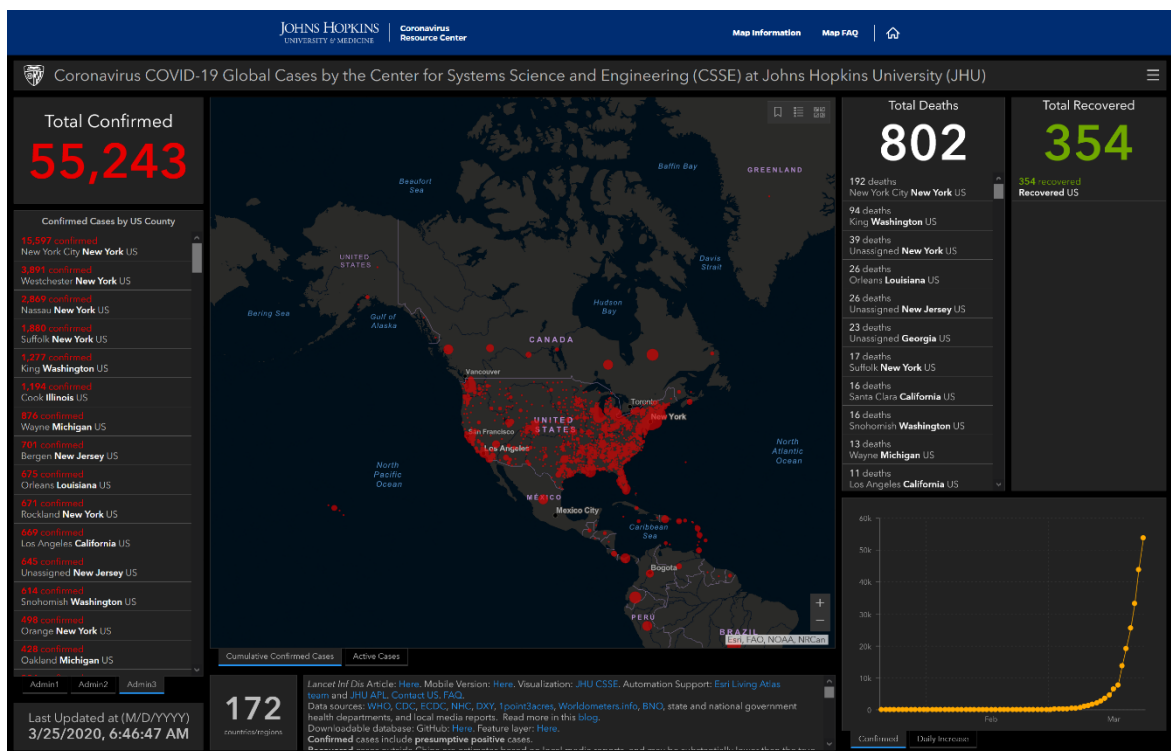
<https://www.cdc.gov/coronavirus/2019-ncov/cases-updates/cases-in-us.html>



<https://www.cdc.gov/coronavirus/2019-nCoV/index.html>

Johns Hopkins mapping 2019-nCoV tool

<https://coronavirus.jhu.edu/map.htm>



FEMA Declaration Requests in Process

State / Tribe / Territory – Incident Description	Type	IA	PA	HM	Requested
IA – COVID-19 Pandemic – APPROVED (Mar 23)	DR		X		Mar 19
NC – COVID-19 Pandemic	DR	X	X	X	Mar 22
FL – COVID-19 Pandemic	DR	X	X	X	Mar 22
TX – COVID-19 Pandemic	DR	X	X		Mar 23
NJ – COVID-19 Pandemic	DR	X	X	X	Mar 23
LA – COVID-19 Pandemic – APPROVED (Mar 24)	DR	X	X		Mar 23
MO – COVID-19 Pandemic	DR	X	X	X	Mar 23
MD – COVID-19 Pandemic	DR	X	X	X	Mar 24
CNMI – COVID-19 Pandemic	DR	X	X	X	Mar 23
SC – COVID-19 Pandemic	DR	X	X	X	Mar 24

US sees deadliest day with 160 deaths

- United States and 704 people have died, according to CNN Health’s tally of US cases that are detected and tested in the US through public health systems.
- There have already been 163 deaths reported today, according to a tally by CNN, making this the deadliest day in the US since the coronavirus pandemic began.

More than half of New Orleans' emergency medical workers are under quarantine, mayor says

- More half of New Orleans' medical emergency services personnel is under quarantine due to the coronavirus pandemic, the city’s mayor told CNN’s Erin Burnett on Tuesday.
- With New Orleans hospitalizations expected to exceed their capacity in 11 days, according to the Louisiana Gov. John Bell Edwards,

State California Update:

COVID-19 in California by the Numbers

Total and new cases as of 03-23-2020

Travel-related & Person to person 1571

- This includes 31 health care workers

Community transmission 531 (57 new)

Under investigation 950 (172 new)

Total cases 2,102 (369 new)

Total deaths: 40 (16 new)

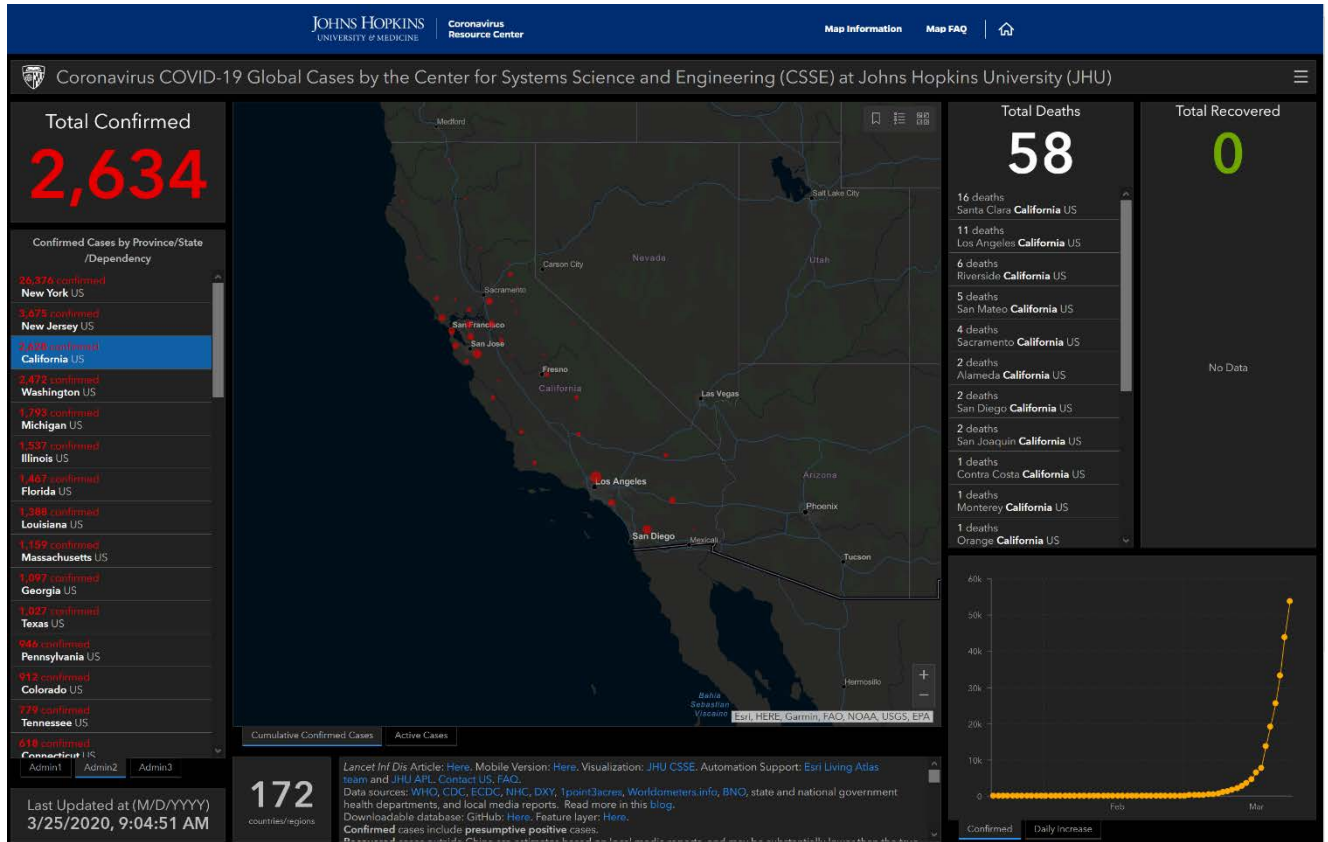
Note: The following numbers reflect information received from local health jurisdictions as of 2 p.m. PDT.

More current numbers may be available from local health jurisdictions.

<https://www.cdph.ca.gov/Programs/CID/DCDC/Pages/Immunization/nCoV2019.aspx>

Johns Hopkins mapping 2019-nCoV tool

<https://coronavirus.jhu.edu/map.htm>



Two infants in San Diego test positive for coronavirus

- Two infants in San Diego have tested positive for coronavirus, Public Health Officer Dr. Wilma Wooten announced at a news conference Tuesday. This is the first time San Diego County has reported cases of infants less than one year of age, Wooten confirmed.

Confirmed California COVID-19 Cases by Source per MHCC report on March 24, 2020

Number of Cases	Source
110 (+18)	Travel Related
35 (+4)	Person to Person Spread (healthcare worker)
197 (+45)	Person to Person Spread (other close contact)
707 (+176)	Community Acquired
1,426 (+332)	Under Investigation
36 (+5)	Grand Princess (second voyage)
2,511 (+580)	Total
24	Repatriation
2,535 (+580)	Total (CA + Repatriation)

Fatalities in California (Reported by Cal OES Law Enforcement Operations Center)

Fatalities	County
3 (+2)	Alameda
1	Contra Costa
2	Los Angeles
1	Placer
6 (+1)	Riverside
5	Sacramento
2	San Benito
2	San Joaquin
1	San Mateo
13	Santa Clara
1	Sonoma
1	Yolo
38 (+3)	Total

Homeless Impact: Housing Units by County (as of March 24, 2020)

County	Hotel Rooms Secured	Trailers Secured	Total Units
Alameda	393	0	393
Los Angeles	686 (-140)	115	801 (-140)
Orange	200	0	200
Sacramento	200	63	263
San Diego	1,699	0	1,699
San Francisco	300 (+251)	0	300 (+251)
San Mateo	25 (+25)	0	25 (+25)
Santa Clara	50	105	155
Inyo	5 (+5)	0	5 (+5)
Mariposa	44	0	44
Mono	48 (+48)	0	48 (+18)
Nevada	27	0	27
Riverside	340	0	340
Yuba	3	0	3
Total	4,015 (+184)	283	4,303 (+189)

Homeless Coordinating & Financing Council (HCFC)

- HCFC is working to meet requirements for providing Homeless Housing Assistance & Prevention (HHAP) award letters to applicants. Applicants are Continuums of Care, County, and City employees and impacts of COVID-19 are causing difficulties in communications. HSFC is also anticipating delays in the ability to release funding.

California Community Colleges Chancellor's Office (CCCCO)

- Established a website for COVID-19:
<https://www.cccco.edu/About-Us/Chancellors-Office/Divisions/Communications-and-Marketing/Novel-Coronavirus>

Meeting today at 9:00 am did not complete before the report was complete

Message from Chancellor Oakley



University of California System (UC)

- UC has established a website that compiles public info at:
<https://ucnet.universityofcalifornia.edu/news/2020/01/ucs-response-to-coronavirus.html>

State University System (CSU)

- Established a website at <https://www2.calstate.edu/coronavirus>

Local SOCAL County Updates:

Riverside County:

COVID-19 by the Numbers

Total and new cases as of 03-24-2020

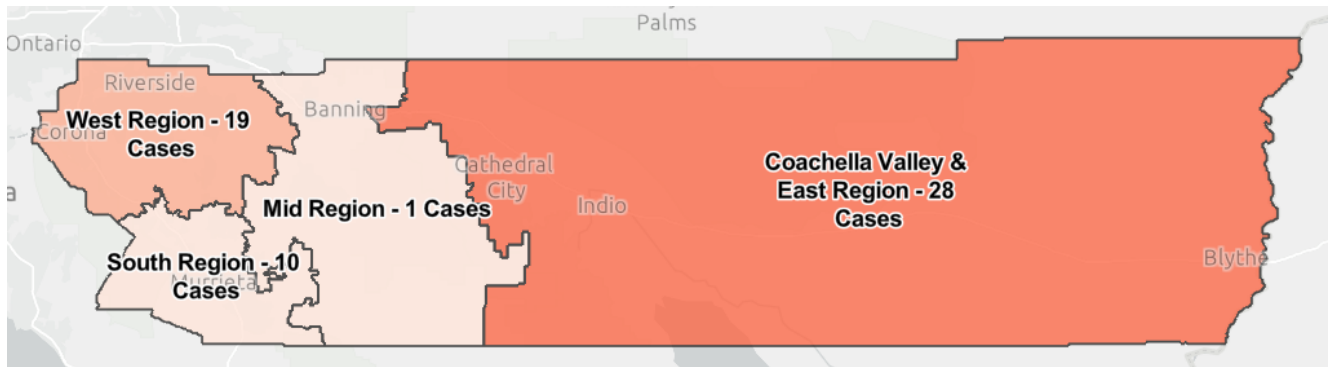
Travel-related	4	(0 new)
Locally Acquired	24	(0 new)
Under investigation	31	(11 new)
Total cases	59	(12 new)
Total deaths:	6	(0 new)

There is a total of **59** confirmed cases (including the 1 Diamond Princess cruise case).

<https://www.rivcoph.org/>

Click on region on the map to get specific numbers. Last updated on 03/22/20 3:40 PM

<https://arcg.is/0P5iXy>



San Luis Obispo County:

COVID-19 by the Numbers

Total and new cases as of 03-24-2020

Total cases	42	(9 new)
Total deaths		

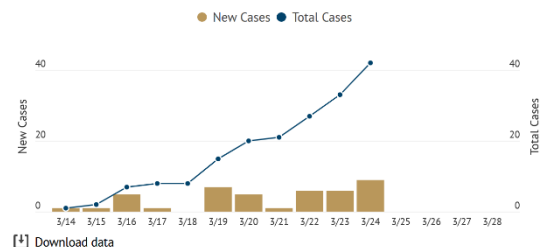
<https://www.emergencyslo.org/en/covid19>

Current Situation

As of 3/24/20 at 1:00 pm

- 42**
Confirmed cases
 - 34**
Home
 - 6**
Recovered
 - 1**
Hospitalized
 - 1**
ICU
 - 0**
Deaths
- [Download data](#)

New vs. Total Confirmed Cases



[Download data](#)

Kern County:

Total and new cases as of 03-24-2020 @ 09:00

Total cases **15** **(2 new)**

Total deaths

<https://kernpublichealth.com/2019-novel-coronavirus/>

Updated twice Daily by 10:00 AM and 4:00 PM and once daily and weekends by 10:00 AM

Positives Detected Among Kern Residents	Positives Detected Among Non-Residents	Number of Negative Tests	Number of Pending Tests*	Number of Total Tests*	Return Travelers Undergoing Monitoring
15	1	221	341	578	4

Updated on 3/25/2020 9:00:00 AM

Updated twice daily on weekdays by 10:00 AM and 4:00 PM and once daily on weekends by 10:00 AM

* As reported by community healthcare providers. This is preliminary data and is subject to change.

Santa Barbara County:

Total and new cases as of 03-24-2020

Total cases **24** **(6 new)**

Total deaths

<https://publichealthsb.org/>

This information is updated once daily on or after 4:30 PM PDT. Numbers for Santa Barbara County reflect the data currently available. This number reflects the tests reported to the Public Health Department not necessarily all testing happening countywide.

493	229	239	1
NUMBER OF TESTS **	NEGATIVE RESULTS **	PENDING RESULTS **	INCONCLUSIVE **

Ventura County

Total and new as of March 24, 2020

Total cases **39** **(4 new)**

Total deaths **1** **(0 new)**

<https://www.vcemergency.com/>

Cases by City

City/Unincorporated Area	#
Camarillo	5
Moorpark	3
Oak Park	1
Ojai	2
Oxnard	4
Santa Paula	2
Simi Valley	11
Somis	1
Thousand Oaks	5
Ventura	4
Westlake Village	1
Total	39

Los Angeles County:

Total and new as of March 24, 2020 12:00 pm

Total cases **662** **(126 new)**

Total deaths **11** **(4 new)**

<http://publichealth.lacounty.gov/media/Coronavirus/>

As of 12pm 03/22 including cases reported by Long Beach and Pasadena Health Departments

Locations	Total Cases
Laboratory Confirmed Cases (LCC)	662
- Los Angeles County (excl. LB and Pas)	635***
- Long Beach	21
- Pasadena	6
Hospitalization and Death	
Hospitalized (Ever)	119
Deaths	11

Orange County:

Total and new cases 03-24-2020

Total cases **152** **(27 new)**

Total deaths **1** **(1 new)**

https://www.ochealthinfo.com/phs/about/epidasmt/epi/dip/prevention/novel_coronavirus

Orange County, CA COVID-19 Case Counts (as of 03/24/2020)								
	Total Cases	Gender		Age Group (years)				
		Male	Female	<18	18 - 49	50 - 64	≥ 65	Unknown
Cases	152	89	63	1	87	41	23	0
Total Deaths	1	1	0	0	0	0	1	0
Travel Related	53	29	24	0	32	14	7	0
Person to Person Spread*	16	11	5	0	11	4	1	0
Community Acquired**	45	27	18	1	20	14	10	0
Under Investigation	39	23	16	0	24	9	6	0

*Contact to a known case. | **Not travel related or contact to known case.

Note: Case counts are updated daily.

San Bernardino County:

Total cases **38** **(21 new)**

Total deaths **1** **(1 new)**

<http://wp.sbcounty.gov/dph/coronavirus/>

San Diego County:

Total and new cases 03-24-2020

Total cases 242 (24 new)

Total deaths 2 (1 new)

Data is updated daily around 4:00 p.m.

<https://www.sandiegocounty.gov/hhsa/programs/phs/>

https://www.sandiegocounty.gov/content/sdc/hhsa/programs/phs/community_epidemiology/dc/2019-nCoV/status.html

Positive Cases in San Diego County Since February 14, 2020			
Coronavirus Disease 2019 (COVID-19)			
Updated March 24, 2020			
COVID-19 Case Summary	San Diego County Residents	Non-San Diego County Residents	Total
Total Positives	226	16	242
Hospitalizations	44	1	45
Intensive Care	20	1	21
Deaths	2	0	2

Imperial County:

Total and new cases 03-24-2020

Total cases 9 (3 new)

Total deaths

<http://www.icphd.org/health-information-and-resources/healthy-facts/covid-19/>

Patients Under Investigation (PUIs) in Imperial County	
Coronavirus Disease 2019 (COVID-19)	
Updated March 24, 2020 6:23PM	
Positive (Confirmed Cases) <i>Positivos (Casos confirmados)</i>	9
Pending Results <i>Resultados pendientes</i>	30 [∞]
Negative <i>Negativos</i>	56*
Total	95

Education Updates:

RCCD:

- With a few exceptions, classes will transition to an online format on Monday, March 23
- Established a website at https://www.rccd.edu/admin/bfs/risk/Pages/covid_19.aspx
- Virtual EOC in Management Watch effective 2-24-2020 with Policy Group in daily meetings since 3-13-2020. – No cases within RCCD

Riverside County Office of Education (RCOE)

- RCOE is offering meal service to students at six locations throughout the County of Riverside. Food service will be from 8:30 am to 11:30 am starting March 17. The locations below will provide two breakfast meals and two lunch meals per student so that one trip will last two days.
 - Riverside: Arlington Regional Learning Center, 6511 Arlington Ave. Riverside 92503
 - Hemet and San Jacinto: Betty Gibbel Regional Learning Center 1251 Eagle Dr., San Jacinto 92583
 - Southern Riverside County: David Long Regional Learning Center 41350 Guava St., Murrieta, 92562
 - Indio and Coachella Valley: Don Kenny Regional Learning Center 47336 Oasis St., Indio, 92562
 - Perris and Moreno Valley: Val Verde Regional Learning Center 3010 Webster Ave., Perris, 92571

- Palm Springs: Palm Springs Community School 1800 Vista Chino, Palm Springs, 92262.
Meals will be distributed at the front of the school in a to-go style.

UCR:

- Established a website at <https://ehs.ucr.edu/coronavirus>

MSJC:

- Established a website at <https://www.msjc.edu/coronavirus/>

CBU:

- Established a website at https://calbaptist.edu/news/cbu_update_coronavirus_1

La Sierra University:

- Established a website at <https://lasierra.edu/response-to-covid-19/>

University of La Verne:

- Established a website at <https://laverne.edu/health/coronavirus/>