

**Daily Situation Summary
March 24 2020 @ 10:00**

Coronavirus Disease 2019 (COVID-19)



Always check with trusted sources for the latest accurate information about novel coronavirus.

- **World Health Organization**
- **Centers for Disease Control and Prevention**
- **California Department of Public Health**
- **County Department/Public Health**
- **Residents in most counties can call 2-1-1**

This can't be real? Fact-checking resources.

- <https://www.boomlive.in/>
- <https://www.snopes.com/>

Fell sick?

Coronaviruses can cause mild to moderate symptoms like the common cold. Complications and outcomes of COVID-19 are still being investigated.

Symptoms of COVID-19 may include:

- Runny nose
- Headache
- Cough
- Sore throat
- Fever
- General feeling of being unwell

Stay Home if You're Sick

Please do NOT contact the Public Health Department directly to request testing.

If you have symptoms other than fever, cough and shortness of breath, County Public Health recommends staying home until you are well.

- Wash your hands frequently for at least 20 seconds
- Clean & Disinfect Frequently
- If you develop a fever while home, stay home until 24 hours after the fever resolves without fever-reducing medicines - Tylenol, Advil or cold medicine that contains these products.

If you have to go out

- Wear a mask if available
- Cover your nose and mouth when coughing or sneezing
- Avoid touching eyes, nose or mouth with unwashed hands
- Wash your hands frequently for at least 20 seconds
- Clean & Disinfect Frequently
- Social Distancing – 3 to 6 feet

Do I have COVID-19 What are the symptoms?

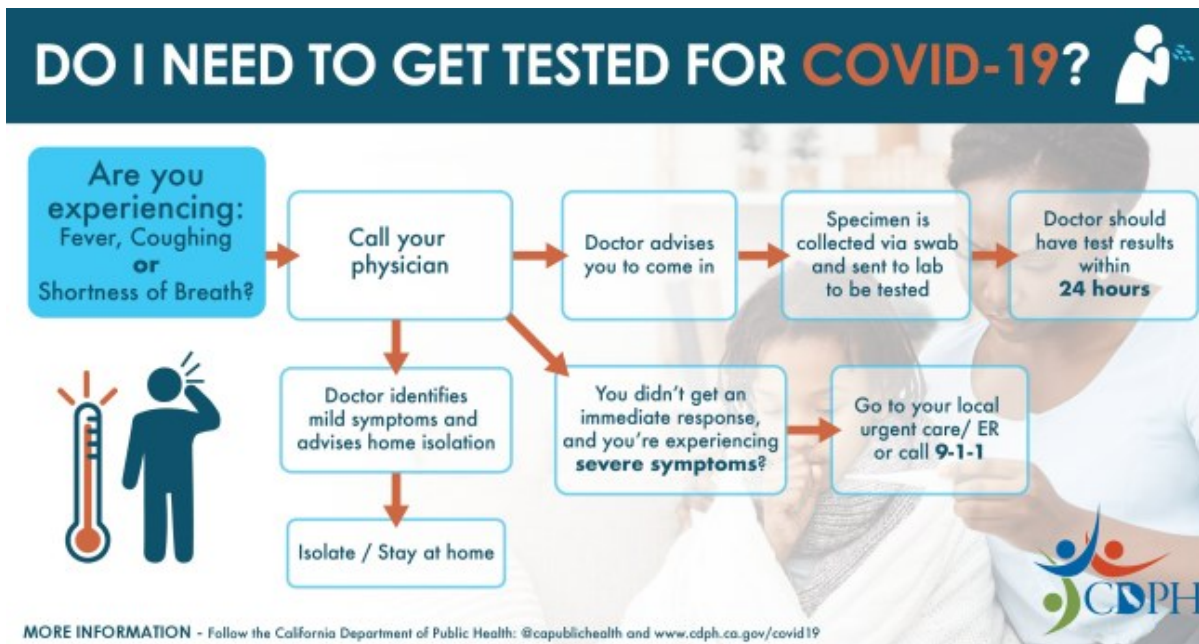
If you have shortness of breath or a fever or cough, or if you had recent contact with someone who had shortness of breath or a fever or cough. Contact a medical professional who will determine if you need to be tested. If you need to seek medical care, please call ahead before you go in.



Who Do I Call?

Please do NOT contact the Public Health Department directly to request testing

- Health-related questions, contact your healthcare provider
- For general questions about COVID-19, information about social/community services, residents in most counties can call 2-1-1
- Call 9-1-1 ONLY if you have a medical emergency.



Below are the links to your County Health Department

- Kern County Public Health Department: <https://kernpublichealth.com/>
- Los Angeles County: <http://publichealth.lacounty.gov/index.htm>
- Orange County: <https://www.ochealthinfo.com/phs>
- Riverside County: <https://www.rivcoph.org/>
- San Bernardino County Department of Public Health: <http://wp.sbcounty.gov/dph/>
- San Diego County: <https://www.sandiegocounty.gov/content/sdc/hhsa.html>
- San Luis Obispo County Public Health: <https://www.slocounty.ca.gov/Departments/Health-Agency/Public-Health.aspx>
- Santa Barbara County: <https://www.countyofsb.org/phd/>
- Ventura County: <http://www.vchca.org/agency-divisions/public-health>

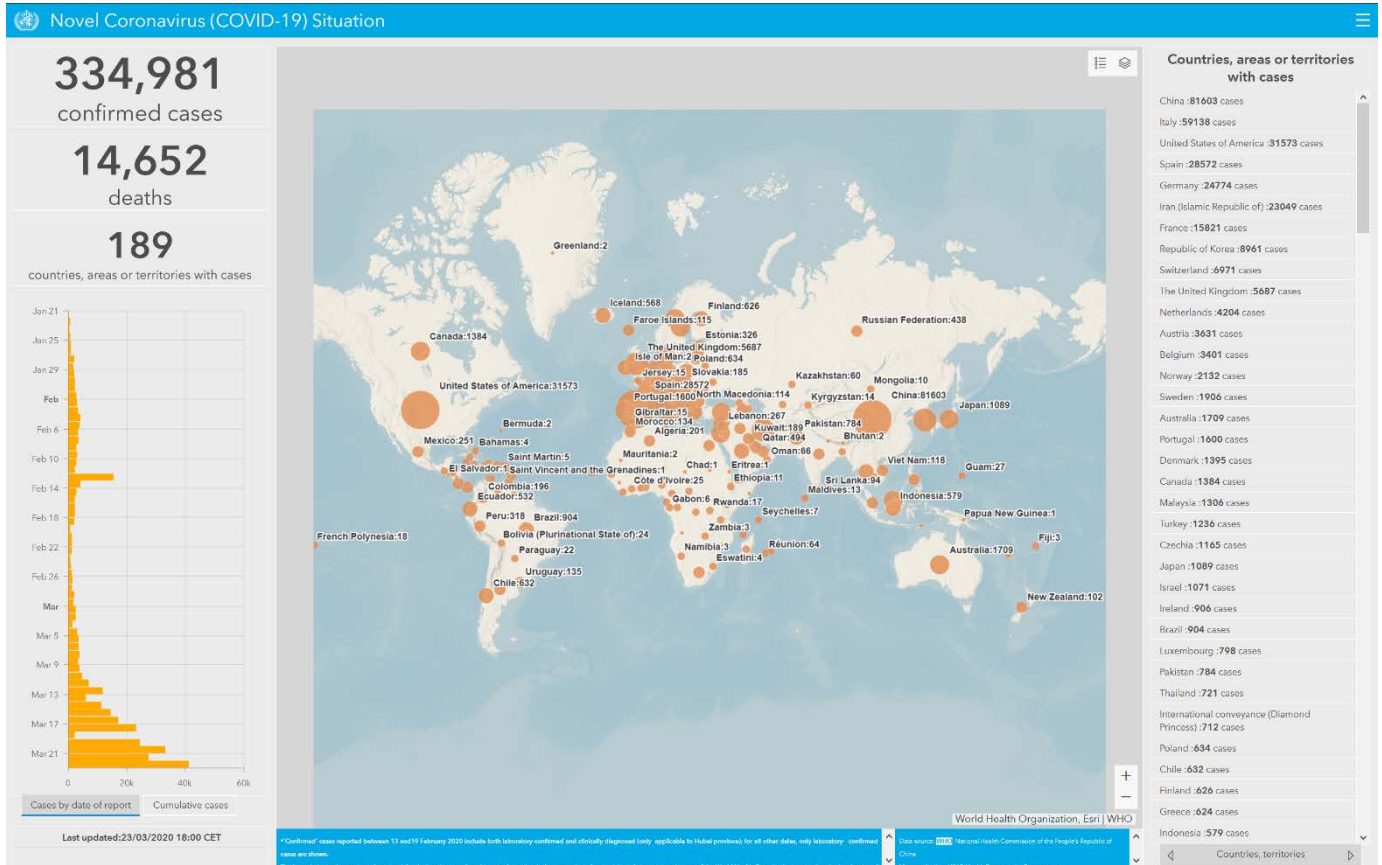
Global Update:

Total and new cases in the last 24 hours

Total cases **334,981** (40,871 new)

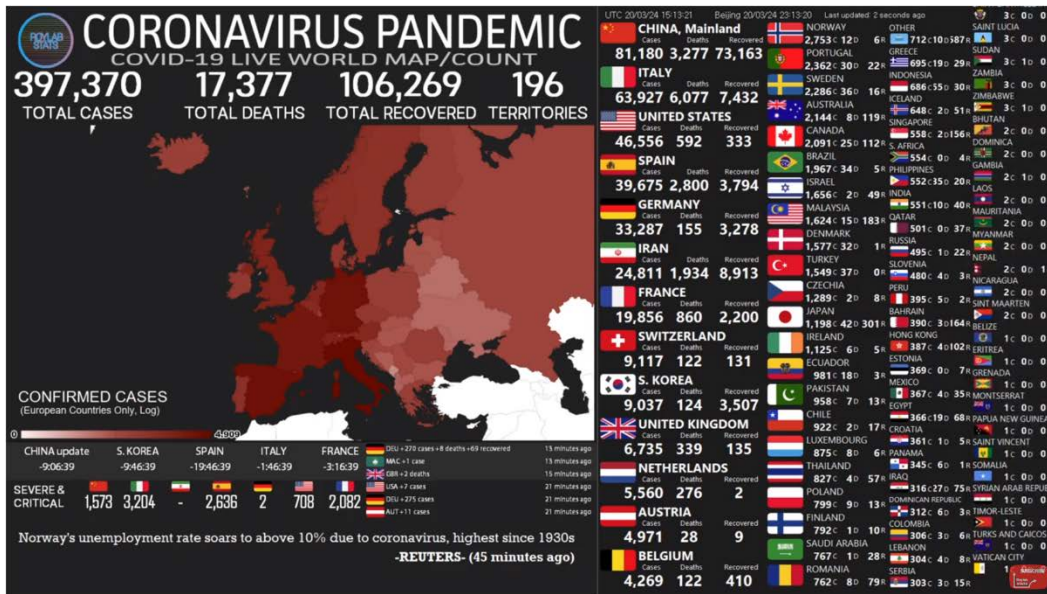
Total deaths: **14,652** (1,708 new)

[https://www.who.int/redirect-pages/page/novel-coronavirus-\(covid-19\)-situation-dashboard](https://www.who.int/redirect-pages/page/novel-coronavirus-(covid-19)-situation-dashboard)

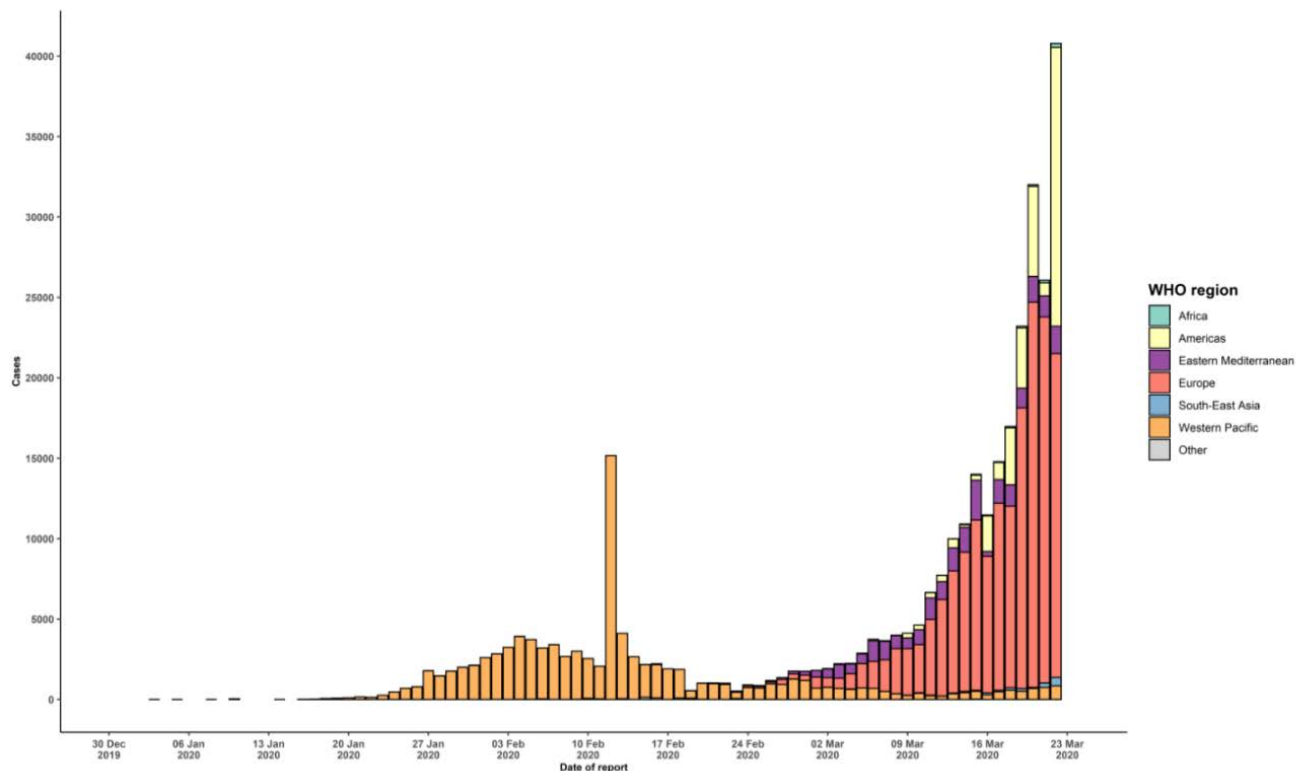


<https://www.youtube.com/watch?v=qgylp3Td1Bw&feature=youtu.be>

[LIVE] Coronavirus Pandemic: Real Time Counter, World Map, News

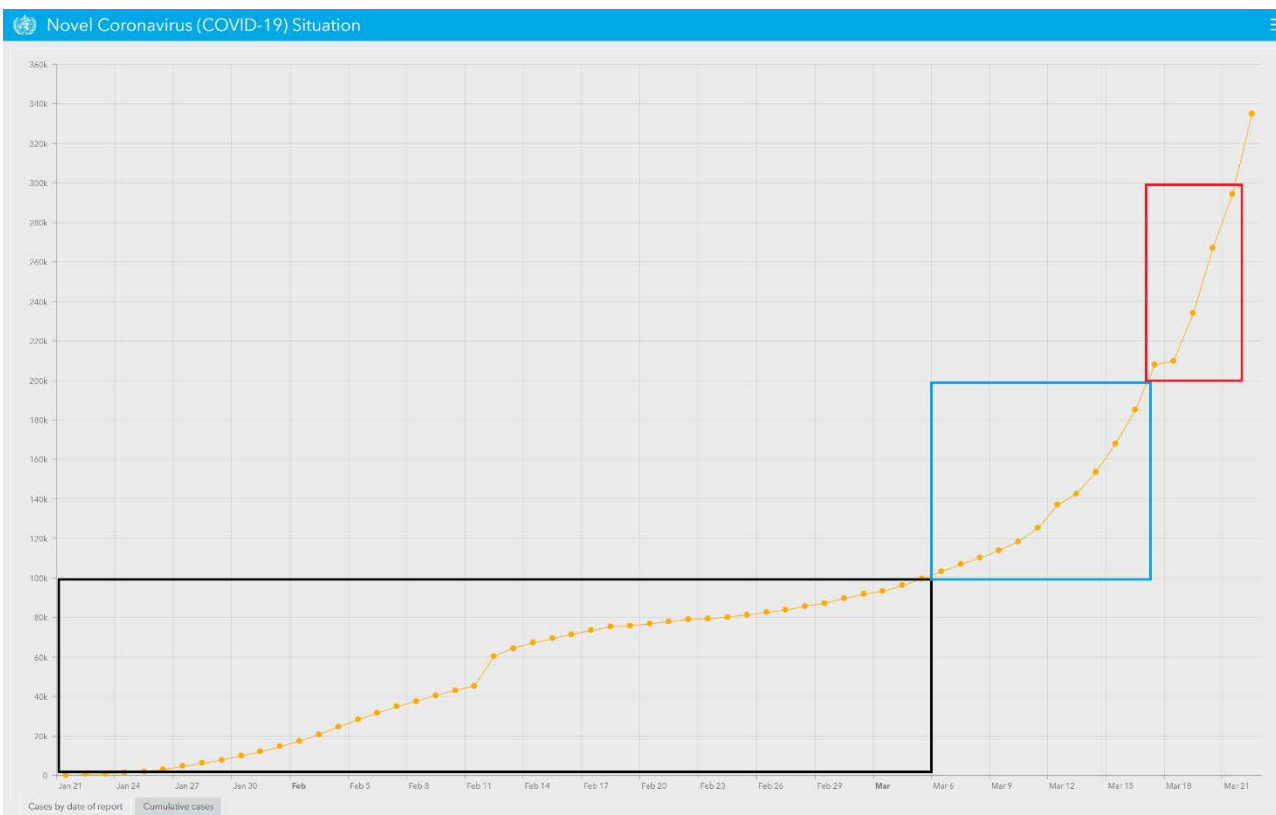


Epidemic curve of confirmed COVID-19, by date of report and WHO region through 23 March 2020



Estimated epidemic curve cases of COVID-19, by date.

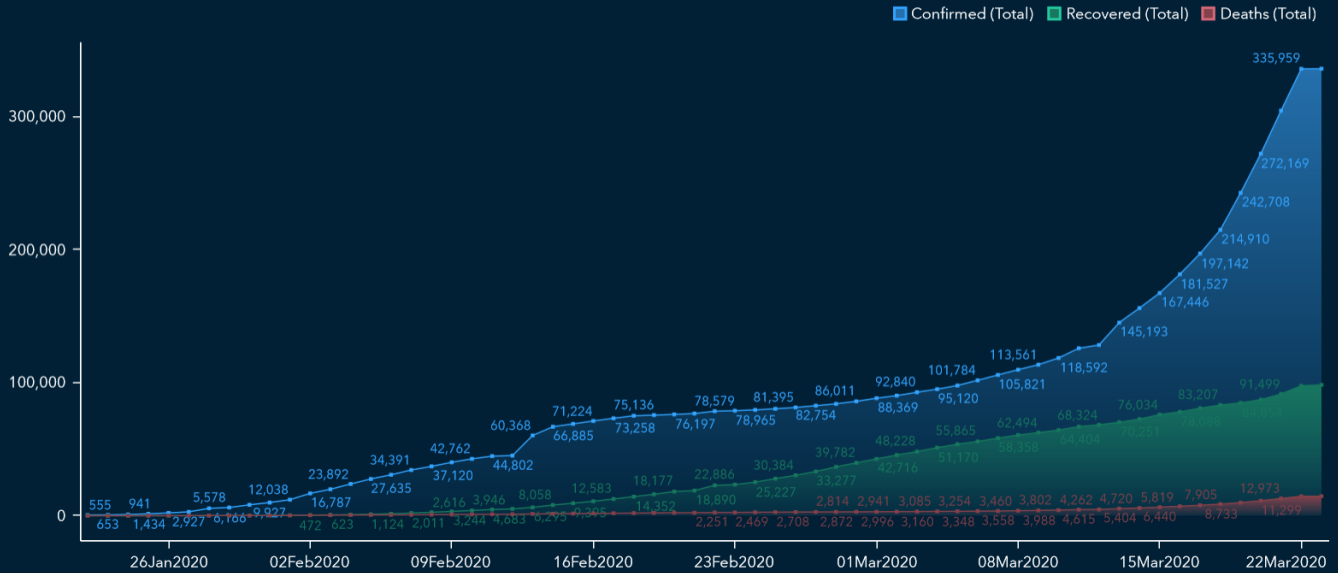
- First 100,000 cases (December 30, 2019 to March 6, 2020) 3 Months
- Second 100,000 cases (March 6, 2020 to March 17, 2020) 11 Days
- Third 100,000 cases (March 17, 2020 to March 21, 2020) 4 Days



Case Status Over Time

The number of confirmed cases (blue), the number of patients who have recovered (green), and the number of associated deaths shown over time (red) are below.

Cases over reporting period



2019-20 Novel Coronavirus Outbreak

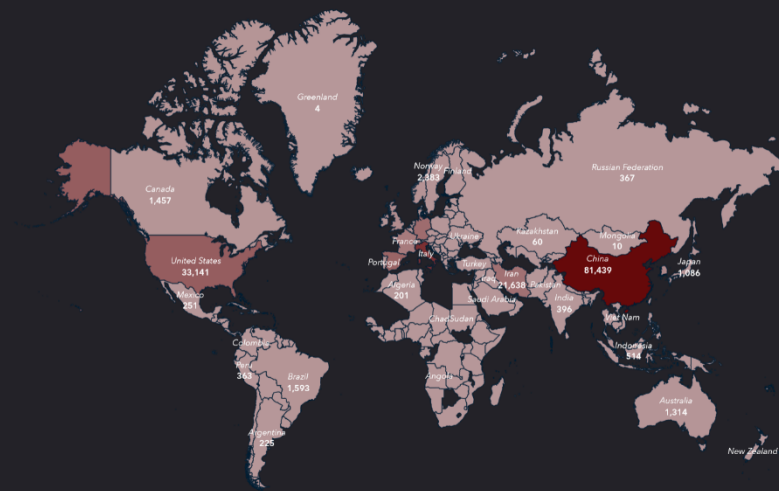
Global Cases and Analysis of SARS-CoV-2

Cases as of: **March 23, 2020**



In early December 2019, a new coronavirus, designated SARS-CoV-2, was identified in Wuhan, China. The illness from the outbreak, termed COVID-19, on March 11, 2020, has now been declared as a global pandemic by World Health Organization.

Globally confirmed cases

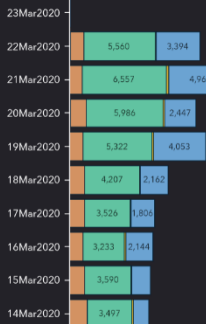


Confirmed (Total)
336,035

Recovered (Total)
98,334

Deaths (Total)
14,645

Top 5 impacted countries by new cases (last 10 days)



Outbreak by country (Top 10)

Country/Region	Confirmed	Recover...	Deaths
China	81K	73K	3.3K
Italy	59K	7K	5.5K
United States	33K	17K	414
Spain	29K	2.6K	1.8K
Germany	25K	266	94
Iran	22K	7.9K	1.7K
France	16K	2.2K	674
South Korea	8.9K	2.9K	104
Switzerland	7.2K	131	98
United Kingdom	5.7K	67	281
All Other	49K	2.2K	771

Mortality Rate
4.4%

Recovery Rate
29.3%

New confirmed and recovered daily cases (last 10 days)



1 in 4 people across the world are under coronavirus restrictions

- About two billion people worldwide are affected by a partial or total lockdown, curfew or some restrictions on their movement due to the coronavirus pandemic, CNN calculates. That represents just over a quarter of the world's population.

The 2020 Paralympics will also be postponed

- International Paralympic Committee President Andrew Parsons is backing the decision to postpone the Tokyo 2020 Games until 2021, saying it was “the only logical option.”
- After weeks of speculation and mounting criticism at the delay in announcing a postponement, International Olympic Committee President Thomas Bach and Japan's Prime Minister Shinzo Abe agreed earlier today that the event would be rescheduled for “no later than summer 2021.”

Brits who ignore government lockdown instructions will be fined \$35 on the spot

- Brits who fail to follow the government's instructions to stay at home face an on-the-spot fine of 30 pounds — or about \$35. UK Prime Minister Boris Johnson's spokesperson announced the measures this afternoon and indicated that the fines could be subject to increase.

National Update:

Cases of COVID-19 Reported in the US, by Source of Exposure

Total and new cases in last 24 hours

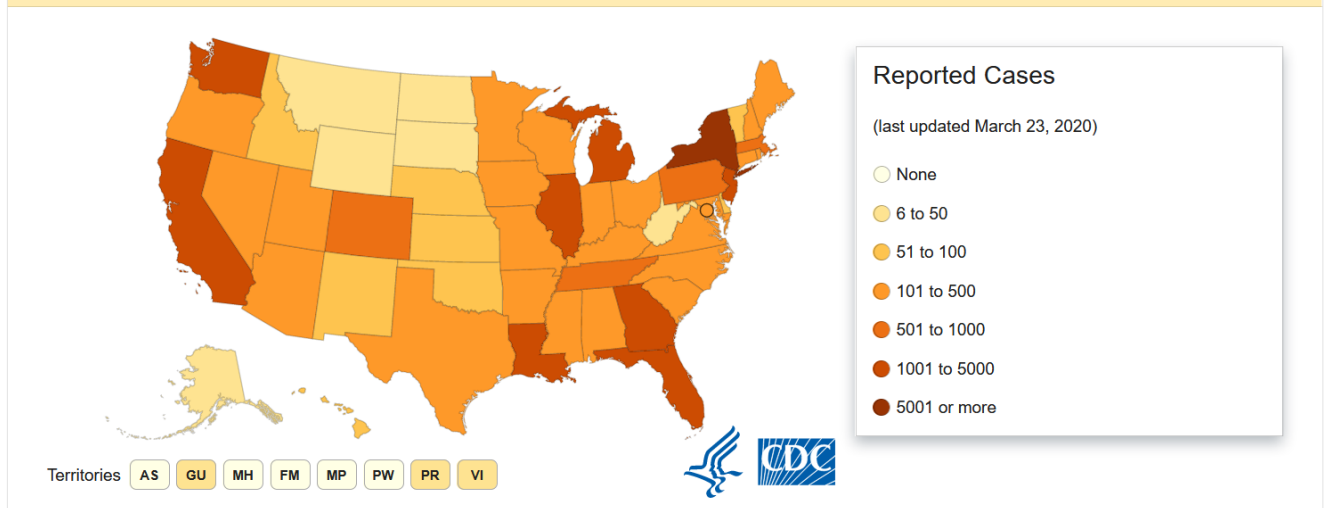
Travel-related	449	(112 new)
Close contact	539	(218 new)
Under investigation	32,416	(17,855 new)
Total cases	33,404	(18,185 new)
Total deaths:	400	(199 new)

Reporting cases: 54 (50 states, DC, Puerto Rico, Guam, & Virgin Islands)

Numbers close out at 4 p.m. the day before reporting

<https://www.cdc.gov/coronavirus/2019-ncov/cases-updates/cases-in-us.html>

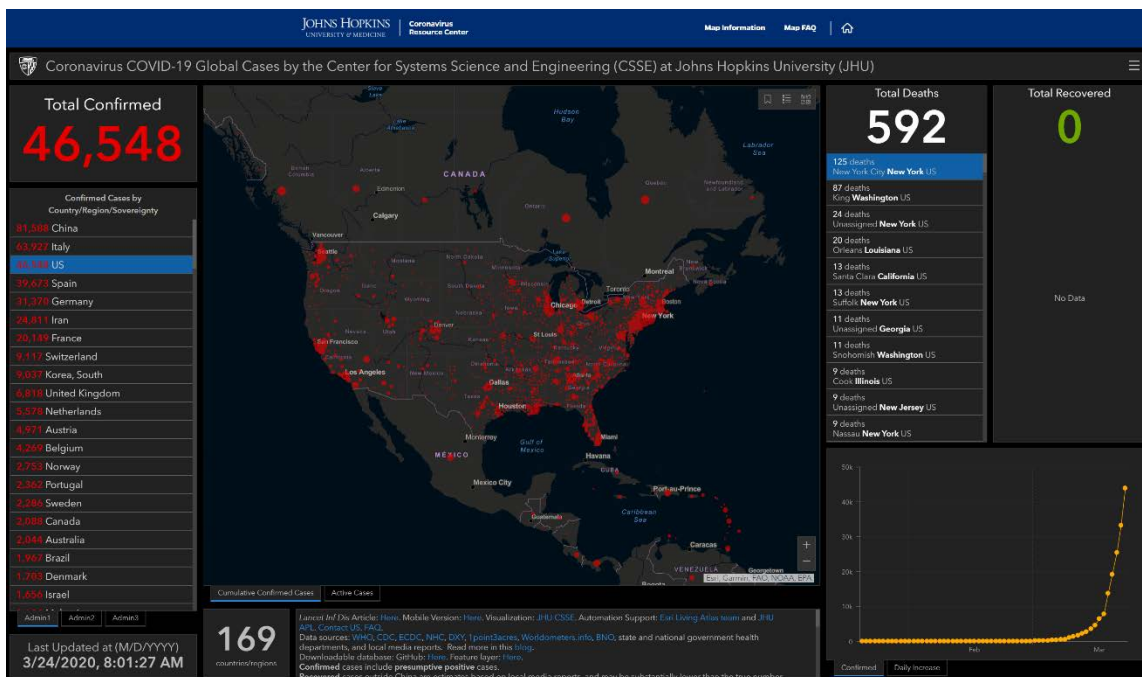
States Reporting Cases of COVID-19 to CDC*



<https://www.cdc.gov/coronavirus/2019-nCoV/index.html>

Johns Hopkins mapping 2019-nCoV tool

<https://coronavirus.jhu.edu/map.htm>



New York governor says the peak of pandemic is 14 to 21 days away

- New York Gov. Andrew Cuomo said the apex of the coronavirus will be "higher" and "sooner" than experts anticipated — and it could be two or three weeks away.
- "We haven't flattened the curve," he said at a news conference. "The apex is higher than we thought and the apex is sooner than we thought. That is a bad combination of facts." New York revised its estimated needs to 140,000 hospital beds and 40,000 ICU beds. Currently, the state has 53,000 hospital beds, he said.

State California Update:

COVID-19 in California by the Numbers

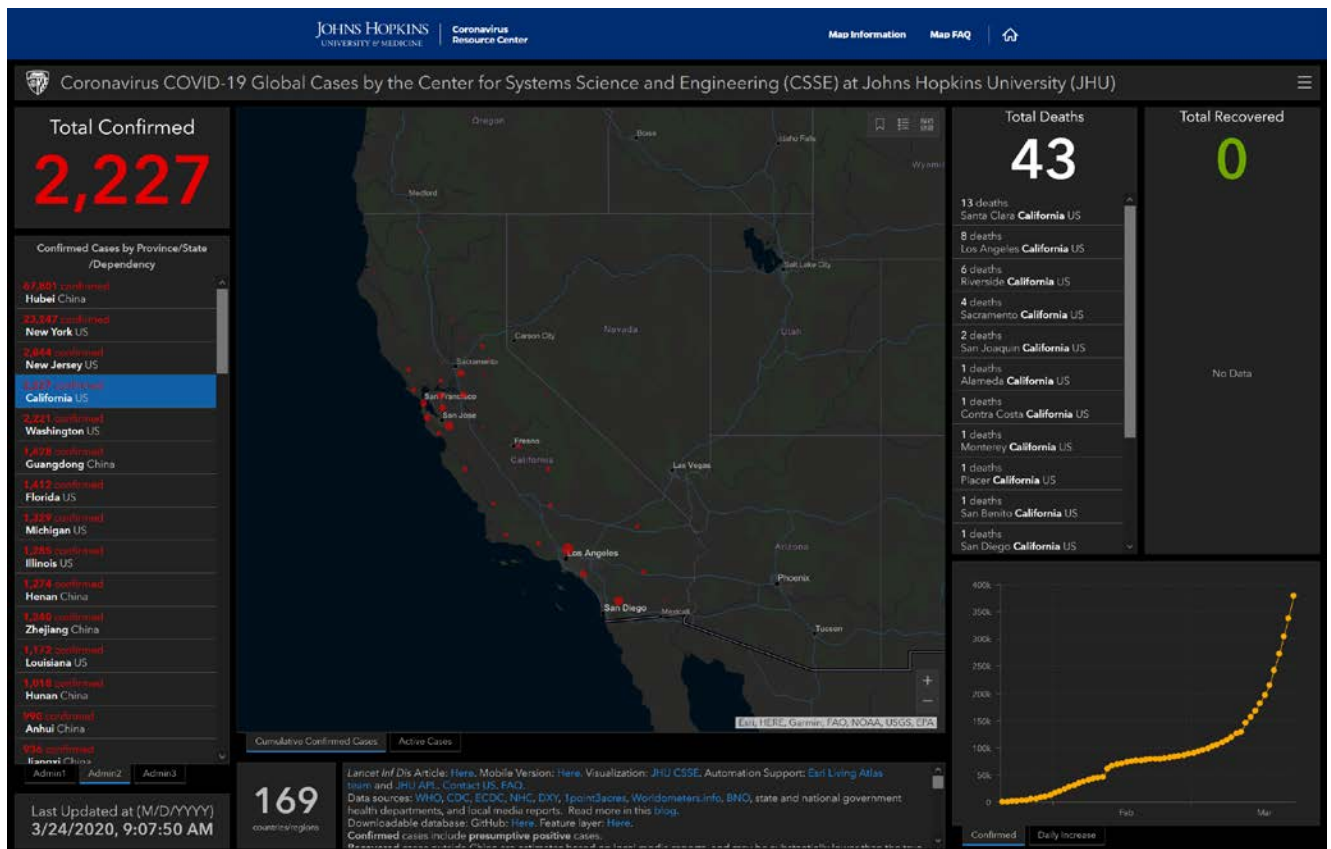
Total and new cases as of 03-22-2020

Travel-related	120	(7 new)
Person to person	165	(20 new)
Community transmission	474	(66 new)
Under investigation	950	(172 new)
Total cases	1,733	(265 new)
Total deaths:	27	(0 new)

Note: The following numbers reflect information received from local health jurisdictions as of 2 p.m. PDT. More current numbers may be available from local health jurisdictions.

<https://www.cdph.ca.gov/Programs/CID/DCDC/Pages/Immunization/nCoV2019.aspx>





California Community Colleges Chancellor's Office (CCCCO)

- Established a website for COVID-19: <https://www.cccco.edu/About-Us/Chancellors-Office/Divisions/Communications-and-Marketing/Novel-Coronavirus>

University of California System (UC)

- UC has established a website that compiles public info at: <https://ucnet.universityofcalifornia.edu/news/2020/01/ucs-response-to-coronavirus.html>

State University System (CSU)

- Established a website at <https://www2.calstate.edu/coronavirus>

Local SOCAL County Updates:

Riverside County:

COVID-19 by the Numbers

Total and new cases as of 03-22-2020

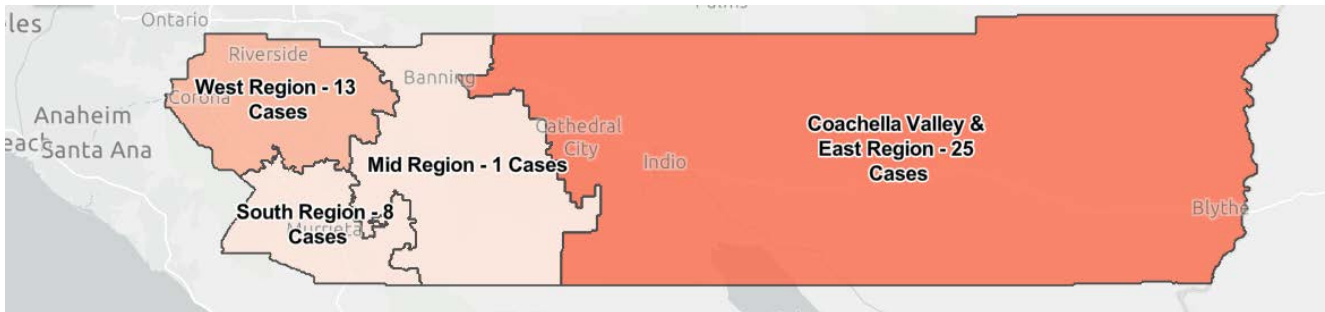
Travel-related	4	(0 new)
Locally Acquired	24	(0 new)
Under investigation	20	(3 new)
Total cases	48	(3 new)
Total deaths:	6	(0 new)

There is a total of **45** confirmed cases (including the 1 Diamond Princess cruise case).

<https://www.rivcoph.org/>

Click on region on the map to get specific numbers. Last updated on 03/22/20 3:40 PM

<https://arcg.is/0P5iXy>



San Luis Obispo County:

COVID-19 by the Numbers

Total and new cases as of 03-23-2020 @ 13:00

Travel-related	19	(2 new)
Person to Person	6	(1 new)
Community Acquired	3	(1 new)
Unknown	5	(2 new)
Total cases	33	(6 new)
Total deaths		

<https://www.emergencyslo.org/en/covid19>

Kern County:

Total and new cases as of 03-24-2020 @ 09:00

Total cases **13** **(2 new)**

Total deaths

<https://kernpublichealth.com/2019-novel-coronavirus/>

Updated twice Daily by 10:00 AM and 4:00 PM and once daily and weekends by 10:00 AM

Santa Barbara County:

Total and new cases as of 03-23-2020

Pending Results	245
Inconclusive	1
Total cases	18

Total deaths

<https://publichealthsb.org/>

This information is updated once daily on or after 4:30 PM PDT. Numbers for Santa Barbara County reflect the data currently available. This number reflects the tests reported to the Public Health Department not necessarily all testing happening countywide.

Ventura County

Total and new as of March 23, 2020 4:25 pm

Total cases	35	(5 new)
Total deaths	1	(0 new)

<https://www.vcemergency.com/>

Los Angeles County:

Total and new as of March 23, 2020 12:00 pm

Total cases	536	(127 new)
Total deaths	7	(2 new)

<http://publichealth.lacounty.gov/media/Coronavirus/>

As of 12pm 03/22 including cases reported by Long Beach and Pasadena Health Departments

Orange County:

Total and new cases 03-22-2020

Travel-related	43	(3 new)
Person to Person	11	(2 new)
Community Acquired	38	(3 new)
Under investigation	33	(22 new)
Total cases	125	(30 new)
Total deaths	0	(0 new)

https://www.ochealthinfo.com/phs/about/epidasmt/epi/dip/prevention/novel_coronavirus

San Bernardino County:

Total cases 17

Total deaths

<http://wp.sbcounty.gov/dph/coronavirus/>

San Diego County:

Total and new cases 03-23-2020

County Residents	213	(35 new)
Non-County Residents	17	(1 new)
Total cases	230	(25 new)
Total deaths	1	(1 new)

Data is updated daily around 4:00 p.m.

<https://www.sandiegocounty.gov/hhsa/programs/phs/>

https://www.sandiegocounty.gov/content/sdc/hhsa/programs/phs/community_epidemiology/dc/2019-nCoV/status.html

Imperial County:

Total and new cases 03-21-2020 @ 8:41 AM

Pending Results 30 (19 new)

Total cases 6

Total deaths

<http://www.icphd.org/health-information-and-resources/healthy-facts/covid-19/>

Education Updates:

RCCD:

- With a few exceptions, classes will transition to an online format on Monday, March 23
- Established a website at https://www.rccd.edu/admin/bfs/risk/Pages/covid_19.aspx
- Virtual EOC in Management Watch effective 2-24-2020 with Policy Group in daily meetings since 3-13-2020. – No cases within RCCD

Riverside County Office of Education (RCOE)

- RCOE is offering meal service to students at six locations throughout the County of Riverside. Food service will be from 8:30 am to 11:30 am starting March 17. The locations below will provide two breakfast meals and two lunch meals per student so that one trip will last two days.
 - Riverside: Arlington Regional Learning Center, 6511 Arlington Ave. Riverside 92503
 - Hemet and San Jacinto: Betty Gibbel Regional Learning Center 1251 Eagle Dr., San Jacinto 92583
 - Southern Riverside County: David Long Regional Learning Center 41350 Guava St., Murrieta, 92562
 - Indio and Coachella Valley: Don Kenny Regional Learning Center 47336 Oasis St., Indio, 92562
 - Perris and Moreno Valley: Val Verde Regional Learning Center 3010 Webster Ave., Perris, 92571
 - Palm Springs: Palm Springs Community School 1800 Vista Chino, Palm Springs, 92262.Meals will be distributed at the front of the school in a to-go style.

UCR:

- Established a website at <https://ehs.ucr.edu/coronavirus>

MSJC:

- Established a website at <https://www.msjc.edu/coronavirus/>

CBU:

- Established a website at https://calbaptist.edu/news/cbu_update_coronavirus_1

La Sierra University:

- Established a website at <https://lasierra.edu/response-to-covid-19/>

University of La Verne:

- Established a website at <https://laverne.edu/health/coronavirus/>