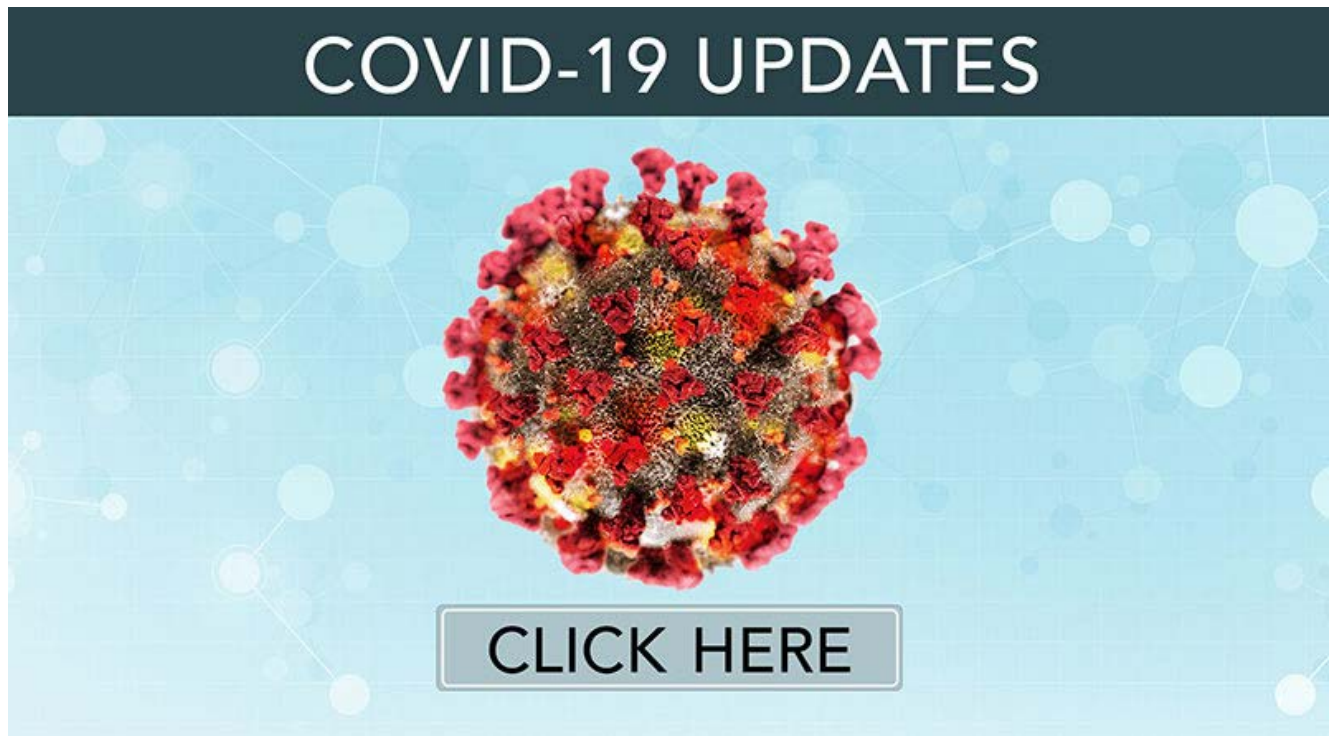


**Daily Situation Summary
March 20 2020 @ 09:00**

Coronavirus Disease 2019 (COVID-19)

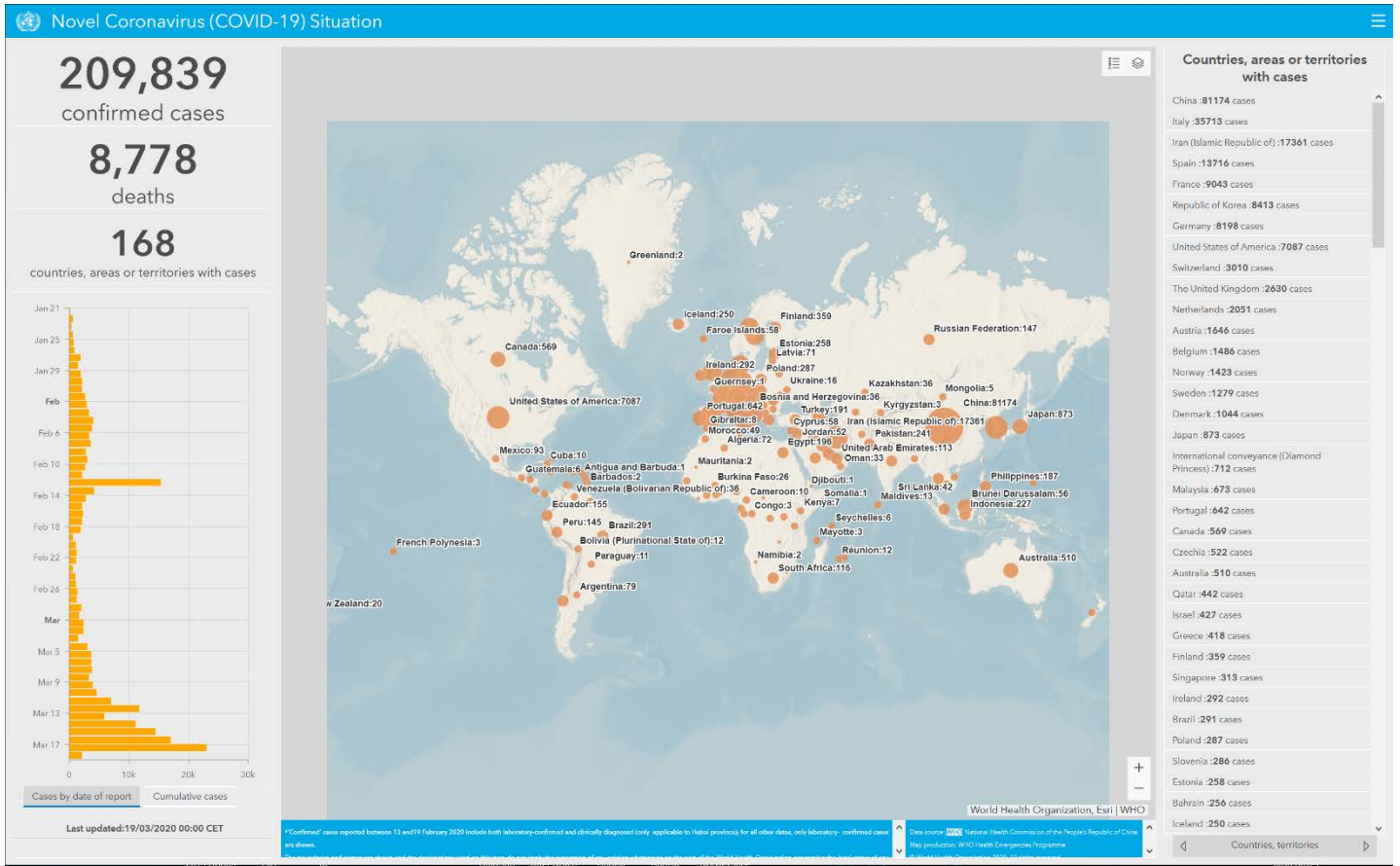


<https://www.rccd.edu/admin/bfs/risk/Pages/safety.aspx>

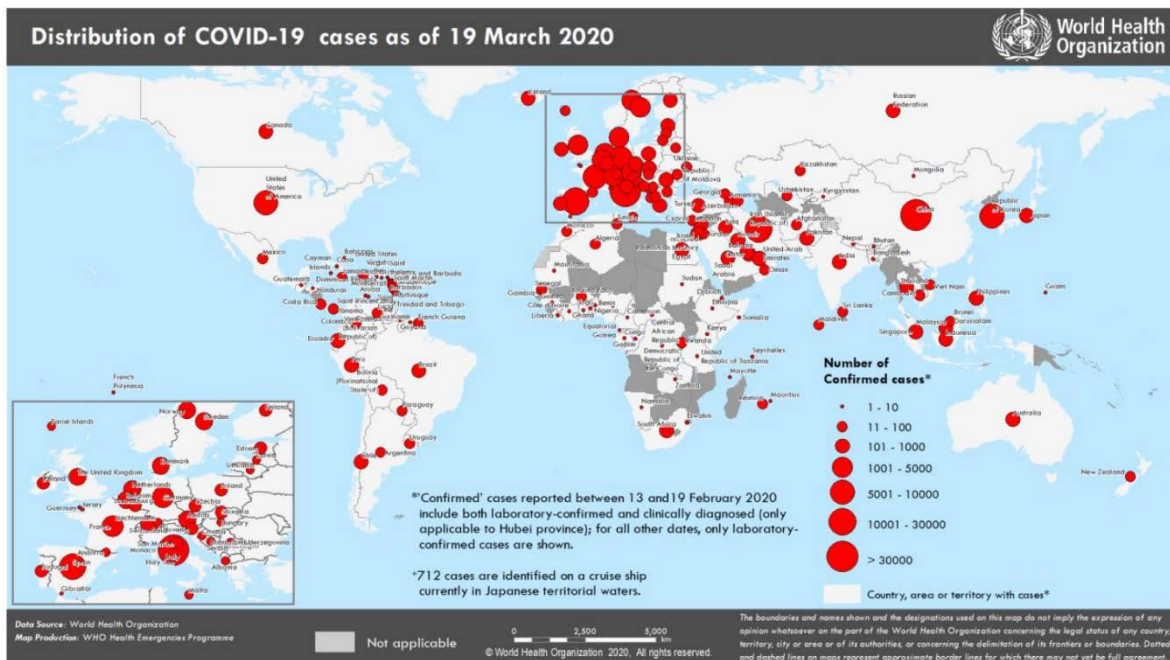
Global Update:

Total and new cases in last 24 hours
 209,839 confirmed (1,979 new)
 8,778 deaths (121 new)

[https://www.who.int/redirect-pages/page/novel-coronavirus-\(covid-19\)-situation-dashboard](https://www.who.int/redirect-pages/page/novel-coronavirus-(covid-19)-situation-dashboard)



Countries, territories, or areas with reported confirmed cases of COVID-19, 19 March 2020



Countries, territories, or areas with reported laboratory-confirmed COVID-19 cases and deaths. Data as of 19 March 2020

Reporting Country/ Territory/Area [†]	Total confirmed [‡] cases	Total confirmed new cases ¹	Total deaths	Total new deaths ¹	Transmission classification [§]	Days since last reported case
Western Pacific Region						
China	81174	58	3242	11	Local transmission	0
Republic of Korea	8413	93	84	3	Local transmission	0
Japan	873	44	29	1	Local transmission	0
Malaysia	673	120	2	2	Local transmission	0
Australia	510	96	6	1	Local transmission	0
Singapore	313	47	0	0	Local transmission	0
Philippines	187	0	14	2	Local transmission	1
Viet Nam	66	5	0	0	Local transmission	0
Brunei Darussalam	56	2	0	0	Local transmission	0
Cambodia	35	11	0	0	Local transmission	0
New Zealand	20	9	0	0	Local transmission	0
Mongolia	5	1	0	0	Imported cases only	0
Territories**						
Guam	5	2	0	0	Local transmission	0
French Polynesia	3	0	0	0	Imported cases only	3
European Region						
Italy	35713	4207	2978	473	Local transmission	0
Spain	13716	2538	598	107	Local transmission	0
France	9043	0	244	0	Local transmission	1
Germany	8198	1042	13	0	Local transmission	0
Switzerland	3010	353	21	2	Local transmission	0
The United Kingdom	2630	672	103	0	Local transmission	0
Netherlands	2051	0	58	0	Local transmission	1
Austria	1646	314	4	1	Local transmission	0
Belgium	1486	0	14	0	Local transmission	1
Norway	1423	115	3	0	Local transmission	0
Sweden	1279	112	3	0	Local transmission	0
Denmark	1044	67	4	0	Local transmission	0
Portugal	642	194	2	1	Local transmission	0
Czechia	522	30	0	0	Local transmission	0
Israel	427	0	0	0	Local transmission	2
Greece	418	0	5	0	Local transmission	1
Finland	359	40	0	0	Local transmission	0
Ireland	292	0	2	0	Local transmission	1
Poland	287	0	5	0	Local transmission	1
Slovenia	286	0	1	0	Local transmission	1
Estonia	258	33	0	0	Local transmission	0
Iceland	250	25	0	0	Local transmission	0
Romania	246	62	0	0	Local transmission	0
Luxembourg	210	63	2	1	Local transmission	0
Turkey	191	51	2	1	Local transmission	0
Russian Federation	147	54	0	0	Imported cases only	0
San Marino	109	5	14	3	Local transmission	0
Slovakia	105	8	0	0	Local transmission	0
Serbia††	96	11	0	0	Local transmission	0
Bulgaria	92	11	2	0	Local transmission	0

Reporting Country/ Territory/Area [†]	Total confirmed ‡ cases	Total confirmed new cases ¹	Total deaths	Total new deaths ¹	Transmission classification [§]	Days since last reported case
Armenia	84	32	0	0	Local transmission	0
Croatia	81	16	0	0	Local transmission	0
Latvia	71	11	0	0	Imported cases only	0
Albania	59	2	2	1	Local transmission	0
Cyprus	58	25	0	0	Local transmission	0
Hungary	58	8	1	0	Local transmission	0
Malta	48	10	0	0	Imported cases only	0
Belarus	46	10	0	0	Local transmission	0
Georgia	38	4	0	0	Imported cases only	0
Bosnia and Herzegovina	36	7	0	0	Local transmission	0
Kazakhstan	36	3	0	0	Imported cases only	0
North Macedonia	36	5	0	0	Local transmission	0
Republic of Moldova	36	0	0	0	Local transmission	1
Azerbaijan	34	13	1	1	Imported cases only	0
Lithuania	26	1	0	0	Imported cases only	0
Liechtenstein	25	18	0	0	Imported cases only	0
Ukraine	16	7	2	0	Local transmission	0
Uzbekistan	16	0	0	0	Imported cases only	1
Monaco	9	0	0	0	Under investigation	2
Kyrgyzstan	3	3	0	0	Under investigation	0
Montenegro	2	0	0	0	Imported cases only	1
Holy See	1	0	0	0	Under investigation	12
Territories**						
Faroe Islands	58	11	0	0	Imported cases only	0
Andorra	39	23	0	0	Imported cases only	0
Gibraltar	8	5	0	0	Under investigation	0
Jersey	5	0	0	0	Imported cases only	1
Greenland	2	0	0	0	Under investigation	1
Guernsey	1	0	0	0	Imported cases only	9
South-East Asia Region						
Indonesia	227	55	19	14	Local transmission	0
Thailand	212	35	1	0	Local transmission	0
India	151	14	3	0	Local transmission	0
Sri Lanka	42	13	0	0	Local transmission	0
Maldives	13	0	0	0	Local transmission	3
Bangladesh	10	2	0	0	Local transmission	0
Bhutan	1	0	0	0	Imported cases only	12
Nepal	1	0	0	0	Imported cases only	55
Eastern Mediterranean Region						
Iran (Islamic Republic of)	17361	1192	1135	147	Local transmission	0
Qatar	442	0	0	0	Local transmission	1
Bahrain	256	5	1	0	Local transmission	0
Pakistan	241	54	0	0	Imported cases only	0
Saudi Arabia	238	67	0	0	Local transmission	0
Egypt	196	30	6	2	Local transmission	0
Iraq	164	0	12	0	Local transmission	1
Kuwait	142	12	0	0	Local transmission	0
Lebanon	133	13	4	1	Local transmission	0
United Arab Emirates	113	15	0	0	Local transmission	0
Jordan	52	13	0	0	Imported cases only	0
Morocco	49	11	2	0	Local transmission	0
Oman	33	9	0	0	Imported cases only	0

Reporting Country/ Territory/Area [†]	Total confirmed ‡ cases	Total confirmed new cases ¹	Total deaths	Total new deaths ¹	Transmission classification [§]	Days since last reported case
Tunisia	29	5	0	0	Local transmission	0
Afghanistan	22	0	0	0	Imported cases only	1
Djibouti	1	1	0	0	Under investigation	0
Somalia	1	0	0	0	Imported cases only	2
Sudan	1	0	1	0	Imported cases only	4
Territories**						
occupied Palestinian territory	44	3	0	0	Local transmission	0
Region of the Americas						
United States of America	7087	3551	100	42	Local transmission	0
Canada	569	145	8	7	Local transmission	0
Brazil	291	57	1	1	Local transmission	0
Chile	238	82	0	0	Local transmission	0
Ecuador	155	97	2	0	Local transmission	0
Peru	145	59	0	0	Local transmission	0
Colombia	93	48	0	0	Local transmission	0
Mexico	93	11	0	0	Imported cases only	0
Panama	86	17	1	0	Local transmission	0
Argentina	79	14	2	0	Local transmission	0
Costa Rica	50	9	0	0	Local transmission	0
Venezuela (Bolivarian Republic of)	36	3	0	0	Imported cases only	0
Uruguay	29	23	0	0	Imported cases only	0
Dominican Republic	21	0	1	0	Local transmission	1
Jamaica	13	1	0	0	Local transmission	0
Bolivia (Plurinational State of)	12	1	0	0	Imported cases only	0
Paraguay	11	2	0	0	Local transmission	0
Cuba	10	5	1	0	Local transmission	0
Honduras	9	1	0	0	Imported cases only	0
Trinidad and Tobago	7	2	0	0	Imported cases only	0
Guatemala	6	0	1	0	Imported cases only	1
Guyana	4	1	1	0	Local transmission	0
Bahamas	3	2	0	0	Local transmission	0
Barbados	2	2	0	0	Imported cases only	0
Saint Lucia	2	0	0	0	Imported cases only	3
Antigua and Barbuda	1	0	0	0	Imported cases only	5
Montserrat	1	1	0	0	Imported cases only	0
Saint Vincent and the Grenadines	1	0	0	0	Imported cases only	5
Suriname	1	0	0	0	Imported cases only	3
Territories**						
Guadeloupe	33	15	0	0	Imported cases only	0
Martinique	23	7	0	0	Imported cases only	0
French Guiana	11	4	0	0	Imported cases only	0
Puerto Rico	5	2	0	0	Imported cases only	0
Aruba	4	2	0	0	Imported cases only	0
Saint Martin	4	2	0	0	Under investigation	0
Curaçao	3	0	0	0	Imported cases only	1
Saint Barthélemy	3	0	0	0	Under investigation	3
United States Virgin Islands	2	0	0	0	Imported cases only	1
Cayman Islands	1	0	1	0	Imported cases only	5

Reporting Country/ Territory/Area [†]	Total confirmed ‡ cases	Total confirmed new cases ¹	Total deaths	Total new deaths ¹	Transmission classification [§]	Days since last reported case
African Region						
South Africa	116	54	0	0	Local transmission	0
Algeria	72	12	6	2	Local transmission	0
Senegal	36	9	0	0	Local transmission	0
Burkina Faso	26	6	1	1	Imported cases only	0
Rwanda	11	4	0	0	Local transmission	0
Cameroon	10	5	0	0	Local transmission	0
Cote d'Ivoire	9	3	0	0	Imported cases only	0
Ghana	9	1	0	0	Imported cases only	0
Nigeria	8	6	0	0	Imported cases only	0
Democratic Republic of the Congo	7	4	0	0	Local transmission	0
Kenya	7	4	0	0	Local transmission	0
Ethiopia	6	1	0	0	Imported cases only	0
Seychelles	6	2	0	0	Imported cases only	0
Congo	3	2	0	0	Imported cases only	0
Equatorial Guinea	3	2	0	0	Imported cases only	0
Gabon	3	2	0	0	Imported cases only	0
Mauritius	3	3	0	0	Under investigation	0
United Republic of Tanzania	3	2	0	0	Imported cases only	0
Liberia	2	1	0	0	Local transmission	0
Mauritania	2	1	0	0	Imported cases only	0
Namibia	2	0	0	0	Imported cases only	4
Zambia	2	2	0	0	Imported cases only	0
Benin	1	0	0	0	Imported cases only	1
Central African Republic	1	0	0	0	Imported cases only	4
Eswatini	1	0	0	0	Imported cases only	4
Gambia	1	1	0	0	Imported cases only	0
Guinea	1	0	0	0	Imported cases only	4
Togo	1	0	0	0	Imported cases only	11
Territories**						
Réunion	12	3	0	0	Imported cases only	0
Mayotte	3	2	0	0	Imported cases only	0
Subtotal for all regions	209127	16556	8771	828		
International conveyance (Diamond Princess)	712	0	7	0	Local transmission	3
Grand total	209839	16556	8778	828		

[†]The designations employed and the presentation of the material in this publication do not imply the expression of any opinion whatsoever on the part of WHO concerning the legal status of any country, territory, city or area or of its authorities, or concerning the delimitation of its frontiers or boundaries. Dotted and dashed lines on maps represent approximate border lines for which there may not yet be full agreement.

[‡]Case classifications are based on WHO case definitions for COVID-19.

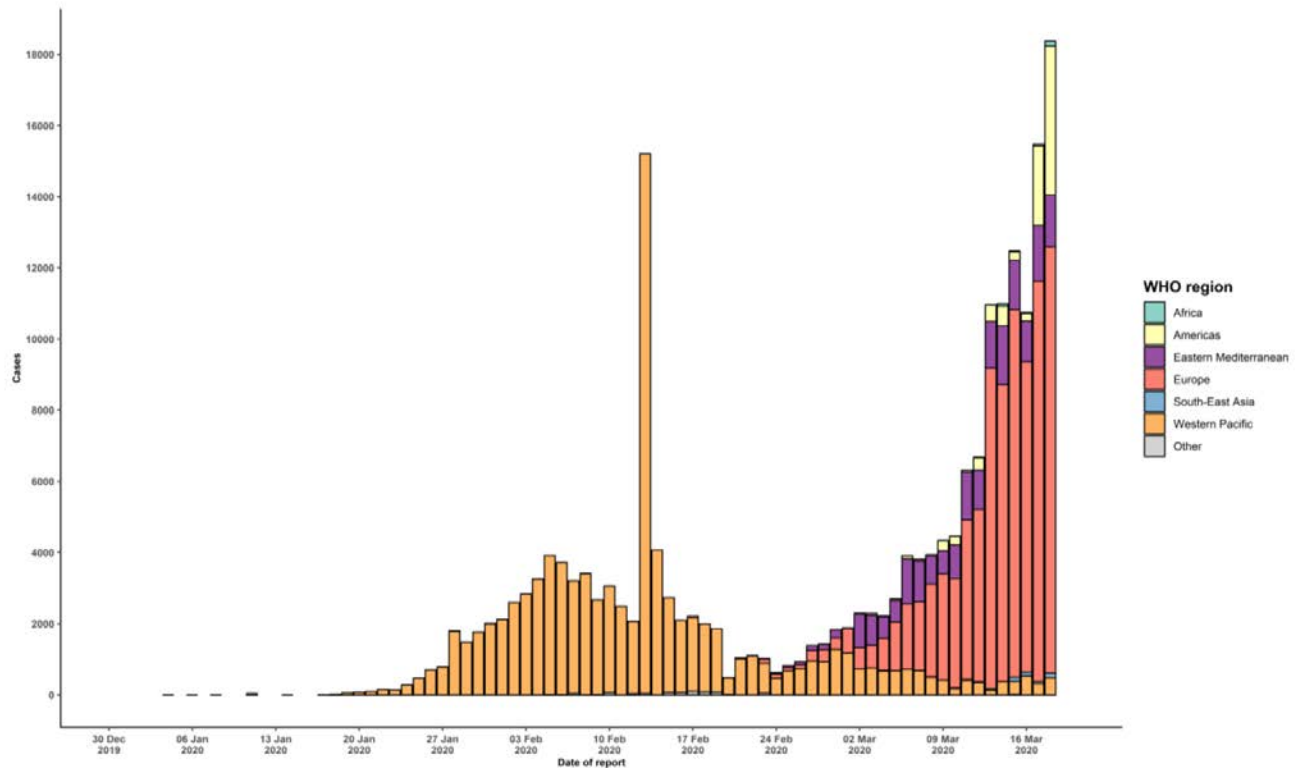
[§]Transmission classification is based on WHO analysis of available official data and may be subject to reclassification as additional data become available. Countries/territories/areas experiencing multiple types of transmission are classified in the highest category for which there is evidence; they may be removed from a given category if interruption of transmission can be demonstrated. It should be noted that even within categories, different countries/territories/areas may have differing degrees of transmission as indicated by the differing numbers of cases and other factors. Not all locations within a given country/territory/area are equally affected.

Terms:

- Community transmission is evidenced by the inability to relate confirmed cases through chains of transmission for a large number of cases, or by increasing positive tests through sentinel samples (routine systematic testing of respiratory samples from established laboratories).
- Local transmission indicates locations where the source of infection is within the reporting location.
- Imported cases only indicates locations where all cases have been acquired outside the location of reporting.
- Under investigation indicates locations where type of transmission has not been determined for any cases.
- Interrupted transmission indicates locations where interruption of transmission has been demonstrated (details to be determined)

New countries/territories/areas are shown in red.

Epidemic curve of confirmed COVID-19, by date of report and WHO region through 19 March 2020



The International Olympic Committee said it is "fully committed" to holding the Games

- The Olympic flame torch arrived in Japan on Friday, marking the beginning of official Olympic celebrations.
- Japanese Olympic Committee (JOC) board member called for the Tokyo Olympics to be postponed because athletes are unable to prepare adequately as a result of the ongoing coronavirus pandemic. The next few weeks could prove decisive in whether it will go ahead this summer.

Johns Hopkins University

- Tracking cases reported by the World Health Organization and additional sources, puts the total number of cases worldwide at more than 243,000 with at least 9,800 deaths. <https://www.hopkinsmedicine.org/coronavirus>

Italy death toll

- The total number of fatalities reported in the country at the new epicenter of the outbreak has now surpassed China's death toll. The number of deaths in Italy reached 3,405 on Thursday -- 157 more than China's toll, which stands at 3,248.

China no new domestic cases

- Mainland China recorded 39 new cases of coronavirus -- all imported from overseas -- on Thursday. It's the second consecutive day of no new domestically transmitted infections. It's also the second day in a row of no new confirmed cases in Hubei province -- ground zero for the pandemic.

Schools to forgo Standardized testing

IRS is moving tax day from April 15th to July 15th

National Update:

Cases of COVID-19 Reported in the US, by Source of Exposure

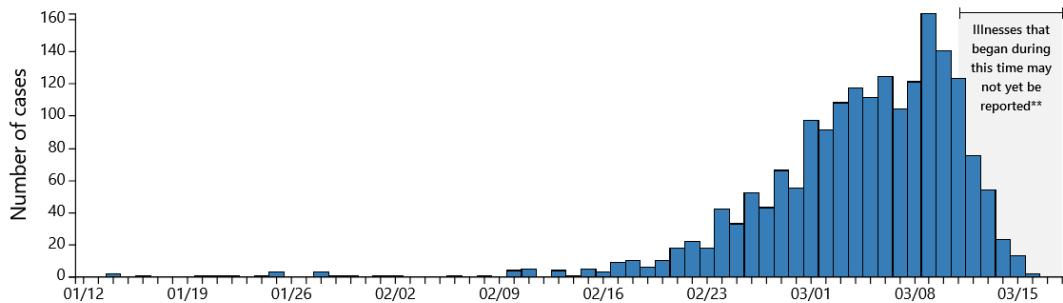
Travel-related	290 (21 new)
Close contact	310 (34 new)
Under investigation	9,842 6,493 (3,349 new)
Total cases	10,442 (3,3404 new)

Total deaths: 150 (53 new)

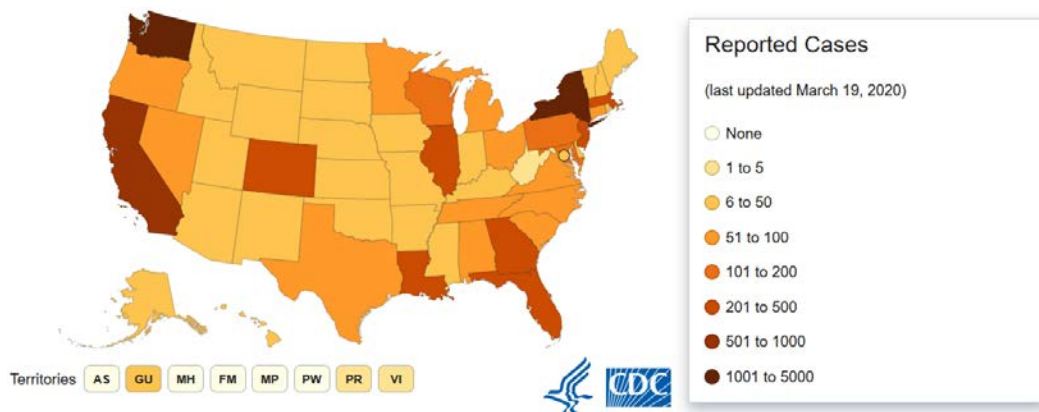
Reporting cases: 54 (50 states, DC, Puerto Rico, Guam, & Virgin Islands)

Numbers close out at 4 p.m. the day before reporting

COVID-19 cases in the United States by date of illness onset, January 12, 2020, to March 18, 2020, at 4pm ET (n=1,891)**



<https://www.cdc.gov/coronavirus/2019-nCoV/index.html>



States			
Jurisdiction	Range	Cases Reported	Community Transmission
Alabama	51 to 100	51	Undetermined
Alaska	6 to 50	6	Undetermined
American Samoa	None	None	N/A
Arizona	6 to 50	27	Undetermined
Arkansas	6 to 50	37	Yes, defined area(s)
California	501 to 1000	652	Yes (defined area or wides...
Colorado	201 to 500	216	Yes, defined area(s)
Connecticut	51 to 100	96	Undetermined
Delaware	6 to 50	26	Undetermined
Washington D.C.	6 to 50	39	Undetermined
Florida	201 to 500	299	Undetermined
Georgia	201 to 500	262	Yes, widespread
Guam	6 to 50	8	Undetermined
Hawaii	6 to 50	10	Undetermined
Idaho	6 to 50	10	Undetermined
Illinois	201 to 500	288	Yes, defined area(s)
Indiana	6 to 50	39	Undetermined
Iowa	6 to 50	38	Yes, widespread
Kansas	6 to 50	21	Undetermined
Kentucky	6 to 50	35	Undetermined
Louisiana	201 to 500	261	Yes, defined area(s)
Maine	6 to 50	44	Yes, defined area(s)
Marshall Islands	None	None	N/A
Maryland	101 to 200	107	Yes, widespread
Massachusetts	201 to 500	256	Yes, widespread
Michigan	51 to 100	80	Yes (defined area or wides...
Micronesia	None	None	N/A
Minnesota	51 to 100	89	Yes, defined area(s)
Mississippi	6 to 50	50	Yes, defined area(s)
Missouri	6 to 50	24	Undetermined
Montana	6 to 50	12	Undetermined
Nebraska	6 to 50	27	Yes, defined area(s)

Jurisdiction	Range	Cases Reported	Community Transmission
● Nevada	51 to 100	63	Yes, defined area(s)
● New Hampshire	6 to 50	39	Yes, defined area(s)
● New Jersey	201 to 500	427	Yes, defined area(s)
● New Mexico	6 to 50	28	Undetermined
● New York	1001 to 5000	4597	Yes (defined area or widespre...
● North Carolina	51 to 100	97	Undetermined
● North Dakota	6 to 50	7	Undetermined
● Northern Marianas	None	None	N/A
● Ohio	51 to 100	88	Undetermined
● Oklahoma	6 to 50	31	Undetermined
● Oregon	51 to 100	75	Yes, defined area(s)
● Palau	None	None	N/A
● Pennsylvania	101 to 200	133	Undetermined
● Puerto Rico	1 to 5	1 to 5	Undetermined
● Rhode Island	6 to 50	33	Undetermined
● South Carolina	51 to 100	60	Yes, defined area(s)
● South Dakota	6 to 50	11	Undetermined
● Tennessee	51 to 100	98	Yes, defined area(s)
● Texas	51 to 100	83	Undetermined
● Utah	6 to 50	40	Undetermined
● Vermont	6 to 50	12	Undetermined
● Virgin Islands	1 to 5	1 to 5	Undetermined
● Virginia	51 to 100	94	Yes, defined area(s)
● Washington	1001 to 5000	1187	Yes (defined area or widespre...
● West Virginia	1 to 5	1 to 5	Undetermined
● Wisconsin	101 to 200	106	Undetermined
● Wyoming	6 to 50	16	Yes, defined area(s)

EPA list of Disinfectants for Use Against SARS-CoV-2

- <https://www.epa.gov/pesticide-registration/list-n-disinfectants-use-against-sars-cov-2>

Nearly 1 in 5 Americans must now sequester

- New York Gov. Andrew Cuomo just announced that 100% of non-essential workers must stay home.
- This comes only a day after California's governor took similar measure, locking down the entire state of nearly 40 million.
- These two states taking these measure means that one in five Americans now must sequester themselves due to the outbreak.

CDC to exercise order 42 to secure borders at midnight on Friday.

- The CDC Director to take measures to prevent the introduction, transmission, and spread of communicable diseases into the United States from foreign countries.
- The United States and Canada jointly agreed to restrict non-essential traffic across our borders, it goes into effect at midnight and excluding crossing the border unless for work or other essential reasons.
- The United States and Mexico have agreed to restrict non-essential travels across our shared border.
- The CDC is recommending all travelers to return to the US or be prepared to stay where they are. With the Global Level 4 Health Advisory – Do Not Travel
<https://travel.state.gov/content/travel/en/traveladvisories/ea/travel-advisory-alert-global-level-4-health-advisory-issue.html>

Trump says antimalarial will soon be available to treat coronavirus

- A drug currently used as an antimalarial — hydroxychloroquine — would be made available almost immediately to treat coronavirus. The food and Drug Administration Commissioner Dr. Stephen Hahn was optimistic today when discussing the progress made in finding a way to eliminate the coronavirus.

US State Department issued travel advisory

- The US State Department has issued a worldwide Level 4: Do Not Travel Advisory due the coronavirus pandemic.

Pentagon prepares to deploy two active duty Army mobile hospital units

- Two active duty Army mobile hospital units have received "prepare to deploy" orders, according to Army Chief of Staff General James McConville.
- The units would be sent to areas still-to-be determined where additional medical beds are needed to treat non-infectious patients, so civilian hospitals can focus on those with coronavirus.

Trump is temporarily waiving all interest on federal student loans

- President Trump said at press conference on 03-20-2020 that the federal government has "temporarily waived all interest on federally held student loans" for 60 days due to the coronavirus outbreak.

Navy hospital ships to support coronavirus response

- USNS Comfort (T-AH-20) according to the U.S. Department of Defense (DOD), the ship is currently in Norfolk, Virginia, for maintenance. The Comfort will take three weeks to deploy and is expected to go to New York
<https://www.silive.com/coronavirus/2020/03/usns-comfort-under-maintenance-will-take-three-weeks-to-deploy.html>
- USNS Mercy (T-AH-19) currently in San Diego was a hub of activity Thursday, as it took on a crew of civilian mariners and supplies ahead of deploying to assist. Expected to sail to Seattle. The governors of California and Washington have both requested President Donald Trump to send the hospital ship to their respective states.
<https://news.usni.org/2020/03/19/navy-hospital-ship-mercy-bound-for-seattle-as-part-of-pentagon-response-to-coronavirus>

CEO of Kraft Heinz is addressing price gouging

- Miguel Patricio, CEO of Kraft Heinz, "We are finding solutions to increase productivity so we can keep or avoid the shelves being empty. I'll give you an example. We stopped producing some of the SKUs to concentrate on products that have high rotation so we can increase the productivity of our plants to do that. Of course we communicate daily with our customers and grocery companies,"
- **What other companies are doing to address this:** Amazon has removed more than 530,000 listings from its marketplace and suspended 2,500 US sellers for coronavirus-related price gouging,

State California Update:

Governor Newsom signs Executive Order N-33-20

- California's governor has ordered all 40 million residents to stay home. That's a big deal
<https://www.cisa.gov/government-facilities-sector>
- **When does the order go into place?** The order will go into effect today and will remain in place until further notice.
- **What's closed?** Dine-in restaurants, bars, nightclubs and gyms will be shuttered. Public events are also banned
- **What will still be open?** Gas stations, pharmacies, banks, food stores, and laundromats will still be open. Essential state and local government functions will also remain open, including law enforcement and offices that provide government programs and services.

Californians ordered to stay home: Around 40 million residents have been told to stay home to prevent the spread of the virus -- the first statewide order in the US. California is the most populous US state and is the country's largest state economy.

EXECUTIVE DEPARTMENT
STATE OF CALIFORNIA

EXECUTIVE ORDER N-33-20

WHEREAS on March 4, 2020, I proclaimed a State of Emergency to exist in California as a result of the threat of COVID-19; and

WHEREAS in a short period of time, COVID-19 has rapidly spread throughout California, necessitating updated and more stringent guidance from federal, state, and local public health officials; and

WHEREAS for the preservation of public health and safety throughout the entire State of California, I find it necessary for all Californians to heed the State public health directives from the Department of Public Health.

NOW, THEREFORE, I, GAVIN NEWSOM, Governor of the State of California, in accordance with the authority vested in me by the State Constitution and statutes of the State of California, and in particular, Government Code sections 8567, 8627, and 8665 do hereby issue the following Order to become effective immediately:

IT IS HEREBY ORDERED THAT:

- 1) To preserve the public health and safety, and to ensure the healthcare delivery system is capable of serving all, and prioritizing those at the highest risk and vulnerability, all residents are directed to immediately heed the current State public health directives, which I ordered the Department of Public Health to develop for the current statewide status of COVID-19. Those directives are consistent with the March 19, 2020, Memorandum on Identification of Essential Critical Infrastructure Workers During COVID-19 Response, found at: <https://covid19.ca.gov/>. Those directives follow:

ORDER OF THE STATE PUBLIC HEALTH OFFICER
March 19, 2020

To protect public health, I as State Public Health Officer and Director of the California Department of Public Health order all individuals living in the State of California to stay home or at their place of residence except as needed to maintain continuity of operations of the federal critical infrastructure sectors, as outlined at <https://www.cisa.gov/critical-infrastructure-sectors>. In addition, and in consultation with the Director of the Governor's Office of Emergency Services, I may designate additional sectors as critical in order to protect the health and well-being of all Californians.

Pursuant to the authority under the Health and Safety Code 120125, 120140, 131080, 120130(c), 120135, 120145, 120175 and 120150, this order is to go into effect immediately and shall stay in effect until further notice.

The federal government has identified 16 critical infrastructure sectors whose assets, systems, and networks, whether physical or virtual, are considered so vital to the United States that their incapacitation or

destruction would have a debilitating effect on security, economic security, public health or safety, or any combination thereof. I order that Californians working in these 16 critical infrastructure sectors may continue their work because of the importance of these sectors to Californians' health and well-being.

This Order is being issued to protect the public health of Californians. The California Department of Public Health looks to establish consistency across the state in order to ensure that we mitigate the impact of COVID-19. Our goal is simple, we want to bend the curve, and disrupt the spread of the virus.

The supply chain must continue, and Californians must have access to such necessities as food, prescriptions, and health care. When people need to leave their homes or places of residence, whether to obtain or perform the functions above, or to otherwise facilitate authorized necessary activities, they should at all times practice social distancing.

- 2) The healthcare delivery system shall prioritize services to serving those who are the sickest and shall prioritize resources, including personal protective equipment, for the providers providing direct care to them.
- 3) The Office of Emergency Services is directed to take necessary steps to ensure compliance with this Order.
- 4) This Order shall be enforceable pursuant to California law, including, but not limited to, Government Code section 8665.

IT IS FURTHER ORDERED that as soon as hereafter possible, this Order be filed in the Office of the Secretary of State and that widespread publicity and notice be given of this Order.

This Order is not intended to, and does not, create any rights or benefits, substantive or procedural, enforceable at law or in equity, against the State of California, its agencies, departments, entities, officers, employees, or any other person.

IN WITNESS WHEREOF I have hereunto set my hand and caused the Great Seal of the State of California to be affixed this 19th day of March 2020.



GAVIN NEWSOM
Governor of California

ATTEST:

ALEX PADILLA
Secretary of State



Governor Newsom Takes Emergency Actions & Authorizes \$150 Million in Funding to Protect Homeless Californians from COVID-19

- Procuring 1,309 travel trailers from FEMA and private vendors to provide quarantine capacity
- Contact hotels and negotiate leases. The state has identified over 950 hotels across 53 counties that are potentially eligible for participation in the state's leasing program.

CAL OSHA Update

- Employer and worker guidance <https://www.labor.ca.gov/coronavirus2019/>
- Benefit Summary <https://www.labor.ca.gov/coronavirus2019/#chart>
- They are updating the third portion of their page daily from the California Department of Public Health. It is a direct link to their website <https://www.cdph.ca.gov/Programs/CID/DCDC/Pages/Immunization/ncov2019.aspx>

Nearly 1 in 4 Californians are under "shelter-in-place" orders

- Napa, Yolo, and San Luis Obispo counties, and the city of Fresno are the latest areas to issue "shelter-in-place" orders, joining ten other Northern California counties.

California Department of Public Health (CDPH)

- The Medical and Health Coordination Center (MHCC) has received approximately 3,250(+460) inquiries from local health jurisdictions and healthcare facilities.
- Return Traveler Monitoring: As of March 17, 2020, CDPH has received notifications on 11,943 returning travelers to California on or after February 3, 2020 from at least 49 Local Health Departments (LHDs) with 375 unassigned

California School District Closures

County Name	Status of Schools 3/19/20	# of Students Impacted
Alameda	Closed	227,509
Alpine	Closed	79
Butte	Closed	31,854
Calaveras	Closed	5,333
Colusa	Closed	4,678
Contra Costa	Closed	177,883
Del Norte	Closed	4,261
El Dorado	Closed	28,152
Fresno	Closed	206,338 (+32,055)
Glenn	Closed	5,642 (+254)
Humboldt	Closed	18,143
Imperial	Closed	37,677
Kern	Closed	192,126
Kings	Closed	29,569
Lake	Closed	9,641
Lassen	Closed	3,860 (+3,860)
Los Angeles	Closed	1,455,537
Madera	Closed	31,929
Marin	Closed	33,430
Mariposa	Closed	1,881
Mendocino	Closed	13,129
Merced	Closed	59,065 (+59,065)
Modoc	Closed	1,393
Mono	Closed	1,910
Monterey	Closed	77,714
Napa	Closed	20,214
Nevada	Closed	11,296
Orange	Closed	477,938
Placer	Closed	74,712
Plumas	Closed	2,205
Riverside	Closed	427,744
Sacramento	Closed	246,349
San Benito	Closed	11,368
San Bernardino	Closed	405,861
San Diego	Closed	506,112
San Francisco	Closed	61,151
San Joaquin	Closed	151,000
San Luis Obispo	Closed	34,442
San Mateo	Closed	94,222
Santa Barbara	Closed	69,346

County Name	Status of Schools 3/19/20	# of Students Impacted
Santa Clara	Closed	267,107
Santa Cruz	Closed	40,179
Shasta	Closed	26,930 (+281)
Sierra	Closed	407
Solano	Closed	62,993
Sonoma	Closed	69,445
Stanislaus	Closed	110,366 (+110,366)
Sutter	Closed	24,794
Tehama	Closed	10,907
Tuolumne	Closed	6,095
Ventura	Closed	135,711
Yolo	Closed	30,045
Yuba	Closed	14,749
Inyo	*Partial	4,357 (+1,850)
Trinity	*Partial	1,441 (+7)
Siskiyou	*Partial	4,686
Tulare	*Partial	95,862 (+589)
Amador	Open	-
Statewide Total		6,158,767 (+208,327)

*Partial indicates only some schools are closed.

Schools Status	Closed	Partial	Open
Total Counties	53(+6)	4(-3)	1 (-2)

* Partial indicates only some schools are closed.

California Community Colleges Chancellor's Office (CCCCO)

- Established a website for COVID-19:
<https://www.cccco.edu/About-Us/Chancellors-Office/Divisions/Communications-and-Marketing/Novel-Coronavirus>

University of California System (UC)

- UC has established a website that compiles public info at:
<https://ucnet.universityofcalifornia.edu/news/2020/01/ucs-response-to-coronavirus.html>

State University System (CSU)

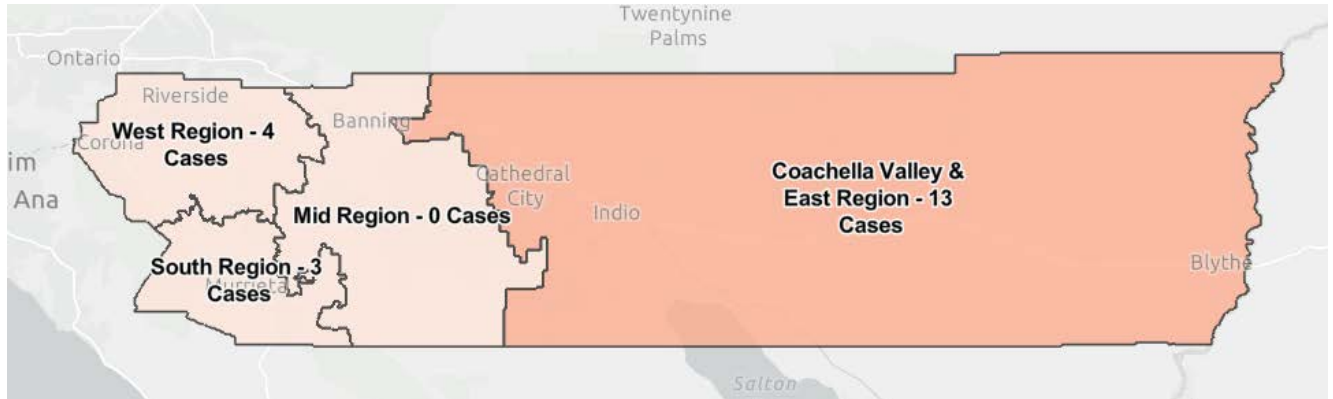
- Established a website at <https://www2.calstate.edu/coronavirus/Campus>

Local County/City Updates:

Riverside County:

Confirmed cases: 22
Travel Associated: 4
Locally Acquired: 18
Deaths: 3

(Updated 3-19-20; 3:00 PM)



- Extension of the Riverside County order to close all schools and institutes from April 3, to April 30th (additional 4 weeks). Affecting 427,744 Students.
- Riverside County health officer orders to cancel gatherings of 10 or more people effective 3-16-2020

RCCD:

- With a few exceptions, classes will transition to an online format on Monday, March 23
- Established a website at https://www.rccd.edu/admin/bfs/risk/Pages/covid_19.aspx
- Virtual EOC in Management Watch effective 2-24-2020 with Policy Group in daily meetings since 3-13-2020. – No cases within RCCD

Our community partner Mark Annas has personally requested assistance from RCCD and other regional partners.

- The list of the requested items that have been requested by the city are as follows:
 - N95 masks
 - Nitrile Gloves
 - Medical Gowns
 - Safety Glasses
 - Sanitary Wipes
 - Hand Sanitizer
 - Chemical Cleaners

- If we have extra items that we can spare since as we are closing down to a skeleton crew. We may look at a donation for the Region; this would be reimbursed (terms to be negotiated) please contact Justin Czerniak if we can donate.

Riverside County Office of Education (RCOE)

- RCOE is offering meal service to students at six locations throughout the County of Riverside. Food service will be from 8:30 am to 11:30 am starting March 17. The locations below will provide two breakfast meals and two lunch meals per student so that one trip will last two days.
 - Riverside: Arlington Regional Learning Center, 6511 Arlington Ave. Riverside 92503
 - Hemet and San Jacinto: Betty Gibbel Regional Learning Center 1251 Eagle Dr., San Jacinto 92583
 - Southern Riverside County: David Long Regional Learning Center 41350 Guava St., Murrieta, 92562
 - Indio and Coachella Valley: Don Kenny Regional Learning Center 47336 Oasis St., Indio, 92562
 - Perris and Moreno Valley: Val Verde Regional Learning Center 3010 Webster Ave., Perris, 92571
 - Palm Springs: Palm Springs Community School 1800 Vista Chino, Palm Springs, 92262.
 Meals will be distributed at the front of the school in a to-go style.

Los Angeles County:

Confirmed cases: 231

Deaths: 2

As of 12pm 03/19 including cases reported by Long Beach and Pasadena Health Departments

Orange County:

2020 Orange County Coronavirus Case Counts							
(as of 03/19/2020)							
	Total Cases	Gender		Age Group (years)			
		Male	Female	<18	18 - 49	50 - 64	≥ 65
Cases	53	33	20	0	26	17	10
Total Deaths	0	0	0	0	0	0	0
Travel Related	25	14	11	0	11	10	4
Person to Person Spread*	7	6	1	0	6	1	0
Community Acquired**	19	12	7	0	8	6	5
Under Investigation	2	1	1	0	1	0	1

*Contact to a known case. | **Not travel related or contact to known case.

Note: Case counts are updated daily.

San Bernardino County:

Confirmed cases: 5

UCR:

- Established a website at <https://ehs.ucr.edu/coronavirus>

MSJC:

- Established a website at <https://www.msjc.edu/coronavirus/>

CBU:

- Established a website at https://calbaptist.edu/news/cbu_update_coronavirus_1

La Sierra University:

- Established a website at <https://lasierra.edu/response-to-covid-19/>

University of La Verne:

- Established a website at <https://laverne.edu/health/coronavirus/>

City of Norco:

- Declares Local Emergency and Announces Temporary Modifications to City Operations. For more information, contact the City of Norco at (951) 270-5623 or info@ci.norco.ca.us