

## Norco College Art Gallery *Fall 2020 Artists Conversation Series*



**Cathy Allen**  
**Oct 13**



**Bradford Salamon**  
**Oct 27**



**Sergio Teran**  
**Nov 10**



**Trang T. Lê**  
**Nov 17**



**Glynnis Reed**  
**Dec 1**

Artist Conversations are Tuesdays, 1:00 p.m. - 2:00 p.m. via CCC ConferZoom. Contact [quinton.bemiller@norccollege.edu](mailto:quinton.bemiller@norccollege.edu) for link and password.

Cathy Allen [www.cathyallenartworks.com](http://www.cathyallenartworks.com)



Cathy Allen's professional art practice has continued over three decades, and the artworks created include traditional and nontraditional processes and media for methods of expression. Though primarily a mixed-media assemblage sculptor, site-specific installations, public art, altered books, experimental sound and performance art have also been produced. The major inspiration for her creative process and the resulting works is the spacious and dramatic environment of the Mojave Desert where Ms. Allen resides. Her artworks have been displayed at various places in the Southern California region, including venues within the cities of Los Angeles, Palm Springs, and San Bernardino, and in the village of Joshua Tree. Her artworks are

owned by art collectors regionally and internationally.

"The spacious and dramatic environment of the Mojave Desert inspire the work both formally and thematically. The assemblages often refer to human physicality, either by giving reference to figurative format or by resembling architectural structures that suggest physical interaction from the viewer. The varied mediums are typically selected because of their history as functional items utilized by humans, and most are cast-off materials scavenged from the desert and appropriated. The elements of decay, rust, and organic weathering are celebrated and act as visual metaphors for the fragility and transience of human life."

Ms. Allen has an MFA degree from The Claremont Graduate University (93) and a BFA degree from Otis/Parsons Art Institute (91). As an academic instructor for twenty-five years, she has taught a variety of studio art and art history courses. Ms. Allen is currently a tenured professor at Copper Mountain College in Joshua Tree, CA.

Bradford J. Salamon [www.bradfordjsalamon.com](http://www.bradfordjsalamon.com)



After being the official artist for the Grammy Awards in the 1990s, Salamon began painting more personal work of his family, friends and fellow artists. Portraiture has remained a significant interest throughout his career. His subjects currently vary widely from narrative scene paintings to allegorical compositions, everyday objects to his *Mélange* series depicting neighborhoods in the Los Angeles area using strong color in multiple perspectives. His most recent works are large portraits of artists using drafting pencils on multiple sheets of vellum paper. Salamon has produced dozens of short films, creates figurative sculptures in various mediums and is also a museum curator and

punk rock musician. Salamon has exhibited widely for 30 years. He has had 5 solo museum shows, over 30 solo gallery shows and is in over a dozen permanent museum collections.

Sergio Teran <https://sergio-teran-7kjf.squarespace.com> [www.instagram.com/sergioteranarts/](http://www.instagram.com/sergioteranarts/)



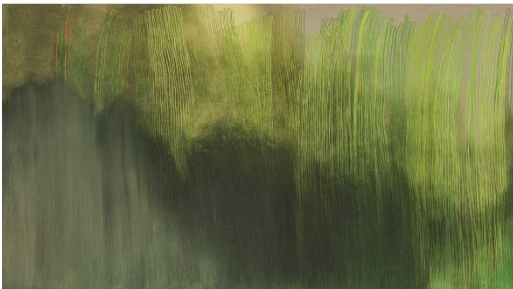
Sergio Teran (b.1974, Los Angeles) graduated with a BFA from Art Center College of Design and an MA in Studio Art from New York University. He lives and works in Los Angeles where is also an Associate Professor of Art at Cerritos College.

Sergio Teran's studio process filters divergent memories, real and imagined places and current events with cultural symbologies from everyday life and reassembles them into richly painted narrative tableaux. For the past 20 years, his paintings have investigated the particularities of a specific cultural identity, originating from intensely personal reflections that are elaborated through a struggle with process and material to elevate representations

of a Mexican American experience.

Sergio's work has been exhibited at the Los Angeles County Museum of Art, The Southwest Museum of Art, and the Vincent Price Museum, who holds a piece in their permanent collection. Angels Gate Cultural Center, Avenue 50 Studio, and Nielsen Gallery (Boston), The University of Connecticut, and Taste like Chicken Art Space, in Brooklyn, NY. His work has been featured on KCET ArtBound (2017), The Los Angeles Times (2017), Joaquin Magazine (2016), and The Culture Trip (2015).

Trang T. Lê [www.trangle.com](http://www.trangle.com)



Trang T. Lê is a contemporary visual artist based in Los Angeles. Born in Nha Trang, South Vietnam, Lê escaped Communist rule with her family to resettle in San Francisco in 1982. As a survivor of war, Lê's paintings reflect not violence but peace and tranquility—the natural yearning to heal the human heart burdened by a tumultuous past.

Lê's genres include abstract paintings to mixed media installations to address socio-political and personal issues. Lê uses nature and her surroundings to find inspiration to heal and these personal contemplations are reflected in her work. Lê navigates her inner, personal space translating into a sense of connection and balance, turmoil and grace, intuition and calculation, in a range of painterly forms.

Lê's paintings shift from broad and gestural, to ones that are built upon tight, meticulous mark-making.

Trang T. Lê earned a Master of Fine Arts at Claremont Graduate University. Lê exhibits her work throughout the United States and abroad. She has held solo and group exhibitions since 2002 in prominent venues such as Vincent Price Art Museum, Riverside Art Museum, Ruth Bachofner Gallery in Santa Monica, Art Space Vincennes, The Artist's House in Tel Aviv, Metahouse – German Cultural Center in Cambodia, Long Beach Museum of Art, Los Angeles Municipal Art Gallery, Huntington Beach Art Center, Sweeney Art Gallery, Division 9 Art Gallery, etc.



I have been working as a professional visual artist and art educator for well over a decade. Born in Los Angeles, I currently live and work in Southern New Jersey. My work has moved from a search into the urban landscape to natural environments that become settings for figurative compositions and lyrical portraits. I compose narratives of love and loss, fulfillment and emptiness, and shadow and light through the mediums of photography, digital collage, drawing, and painting.

I have exhibited my work extensively at the local, national, and international levels. A solo exhibition of my photography and collages was featured at the Kunstraum Arcade Gallery in Moedling, Austria. My work has been on view at the DePaul University Museum in “Double Exposure: African Americans Before and Behind the Camera,” which traveled across the United States. The galleries and museums that have shown my work include the African American Museum of Philadelphia; the Museum of the African Diaspora, San Francisco, CA; Craft and Folk Art Museum, Los Angeles, CA; Main Line Art Center, Haverford, PA; Armory Center for the Arts, Pasadena, CA; the University of Detroit Mercy, Detroit, MI; the Noyes Museum of Art, Oceanville, NJ; Allens Lane Art Center, Philadelphia, PA; Richard Stockton University Art Gallery, Pomona, NJ; Noyes Arts Garage, Atlantic City, NJ; Ocean City Arts Center, Ocean City, NJ; Asian Arts Initiative, Philadelphia, PA; and the Laguna Art Museum, Laguna Beach, CA. I am a recipient of the “Visions From the New California” award and was awarded artist residencies with AIR Krems in Krems, Austria and Djerassi Resident Artists Program in Woodside, California. I hold a MFA in Studio Art from the University of California, Irvine.