

2023-2024

Degrees and Certificates Awarded

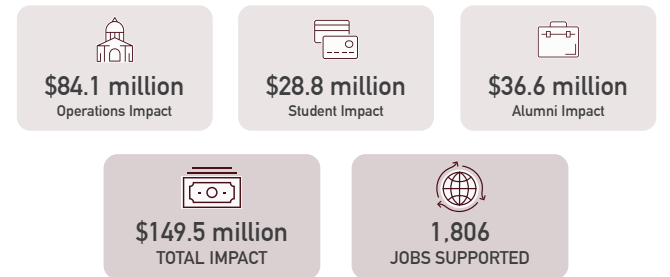
	2019 - 2020	2020 - 2021	2021 - 2022	2022 - 2023	2023 - 2024
ADT	507	615	604	522	513
AA/AS	1,263	1,485	1,542	1,412	1,242
Certificates*	534	403	482	408	380
Total:	2,304	2,503	2,628	2,342	2,135

*Includes Local and State Chancellor's Office approved certificate awards

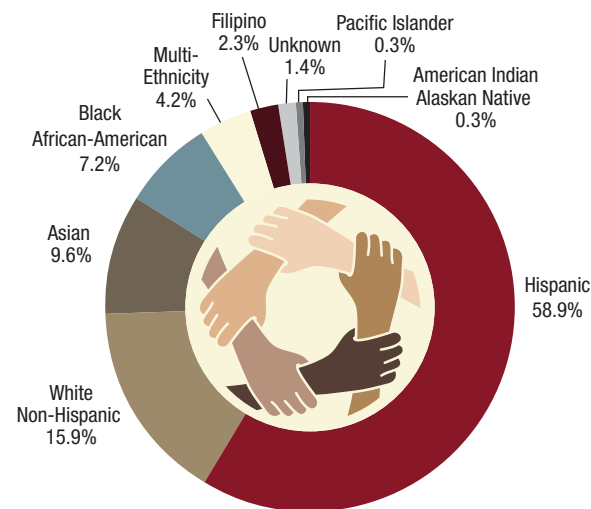
Academic and Certificate Programs

Associate Degree Programs	Associate Degrees for Transfer	Certificate Programs*
52	25	41

College Economic Impact 2019-2020

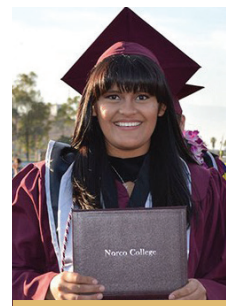


Ethnicity



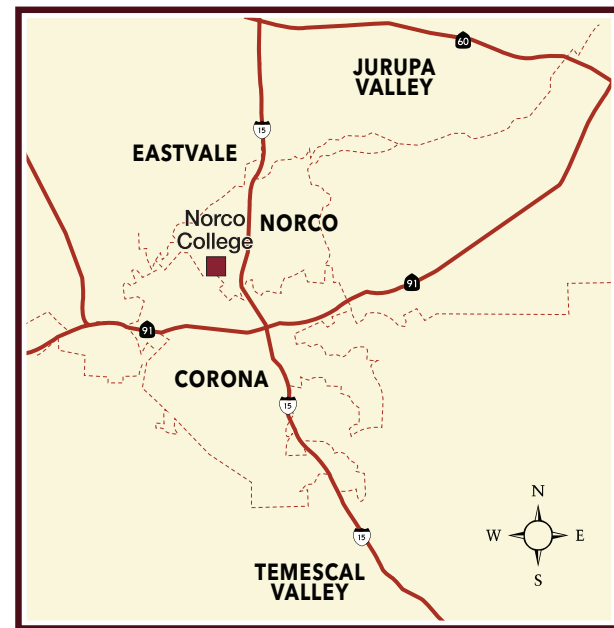
"I came to Norco College blindly. It was close to my house, and it was my only option. But I loved it. The mentorship and the level of discipline and study skills I gained at Norco College have been invaluable."

— Klutvert Tabot
Mustang Alum



"I chose Norco College because of its reputation for nurturing student success. As an undocumented student, there were times when I questioned my path, unsure if my status would limit my opportunities. However, thanks to the guidance I received many doors opened for me."

— Brenda Lopez Reyna
Mustang Alum



NORCO COLLEGE | 2001 Third Street
Norco, CA 92860
www.norcocollege.edu



Norco College is part of the 41st Congressional District, the 31st and 32nd Senate District, and the 63rd Assembly Districts.

Norco College is one of three colleges in the Riverside Community College District. Originally established as a campus in 1991, Norco College became the 112th California Community College in January 2010.

The Riverside Community College District does not discriminate on the basis of race, color, national origin, sex, disability, or age in its programs and activities. The following person has been designated to handle inquiries regarding the non-discrimination policies or practices: District Compliance Officer, 3801 Market Street, Riverside, CA 92501, (951) 222-8039.

NORCO COLLEGE

At-A-Glance
2025

**Today's Students
Tomorrow's Leaders**

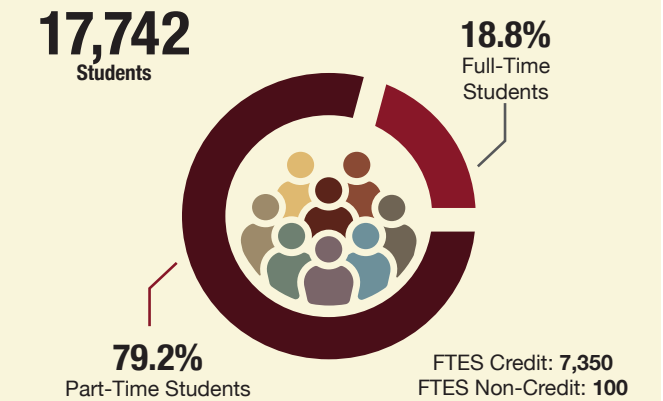


At-A-Glance

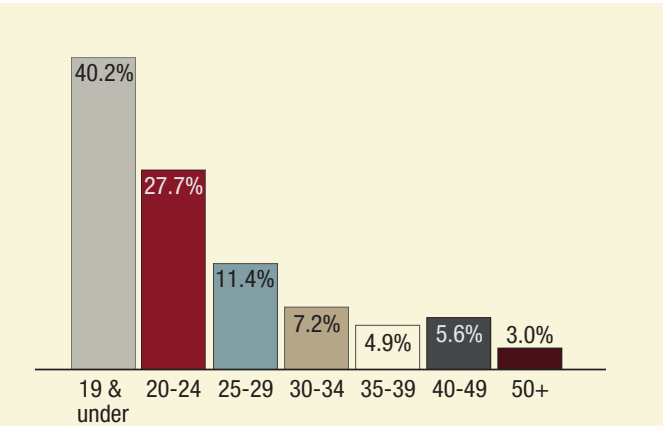
2025

DEMOGRAPHICS

Enrollment



Age



Gender

